



## Analysis and design of channel interleavers for terrestrial broadcast

Ronald Garzon Bohorquez, Charbel Abdel Nour, Catherine Douillard

### ► To cite this version:

Ronald Garzon Bohorquez, Charbel Abdel Nour, Catherine Douillard. Analysis and design of channel interleavers for terrestrial broadcast. M3 Open Event : projet ANR Mobile MultiMedia, May 2013, Issy Le Moulineaux, France. 2013. <hal-01170386>

**HAL Id: hal-01170386**

**<https://hal.archives-ouvertes.fr/hal-01170386>**

Submitted on 12 Aug 2015

**HAL** is a multi-disciplinary open access archive for the deposit and dissemination of scientific research documents, whether they are published or not. The documents may come from teaching and research institutions in France or abroad, or from public or private research centers.

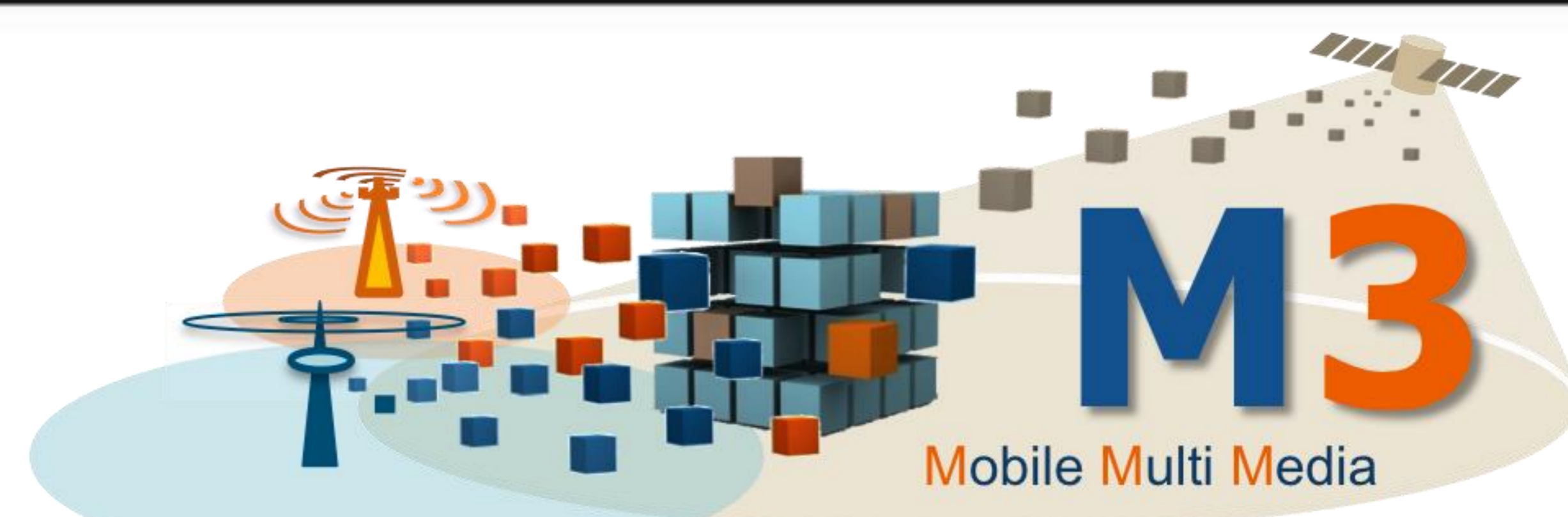
L'archive ouverte pluridisciplinaire **HAL**, est destinée au dépôt et à la diffusion de documents scientifiques de niveau recherche, publiés ou non, émanant des établissements d'enseignement et de recherche français ou étrangers, des laboratoires publics ou privés.

## Contacts:

ronald.garzonbohorquez@telecom-bretagne.eu

charbel.abdelnour@telecom-bretagne.eu

catherine.douillard@telecom-bretagne.eu



# Analysis and Design of Channel Interleavers for Terrestrial Broadcast

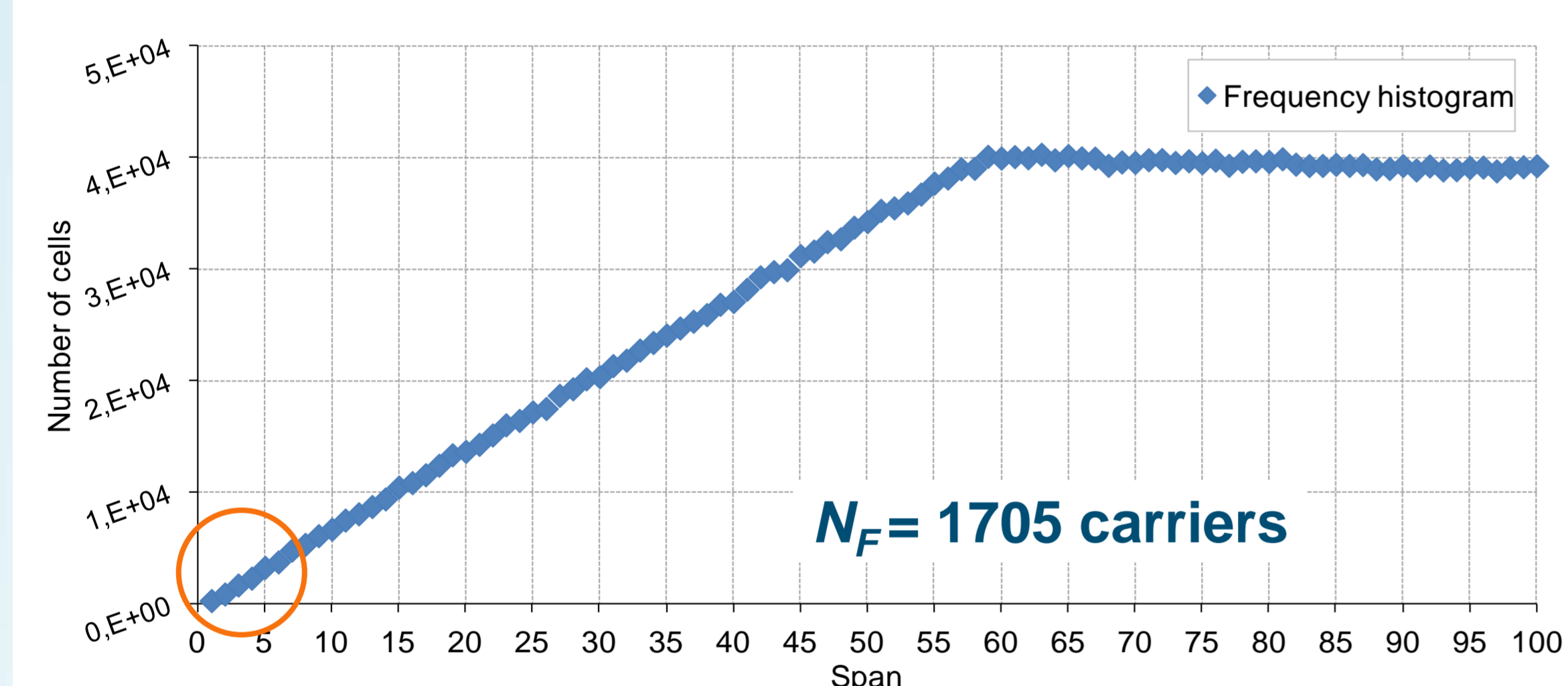
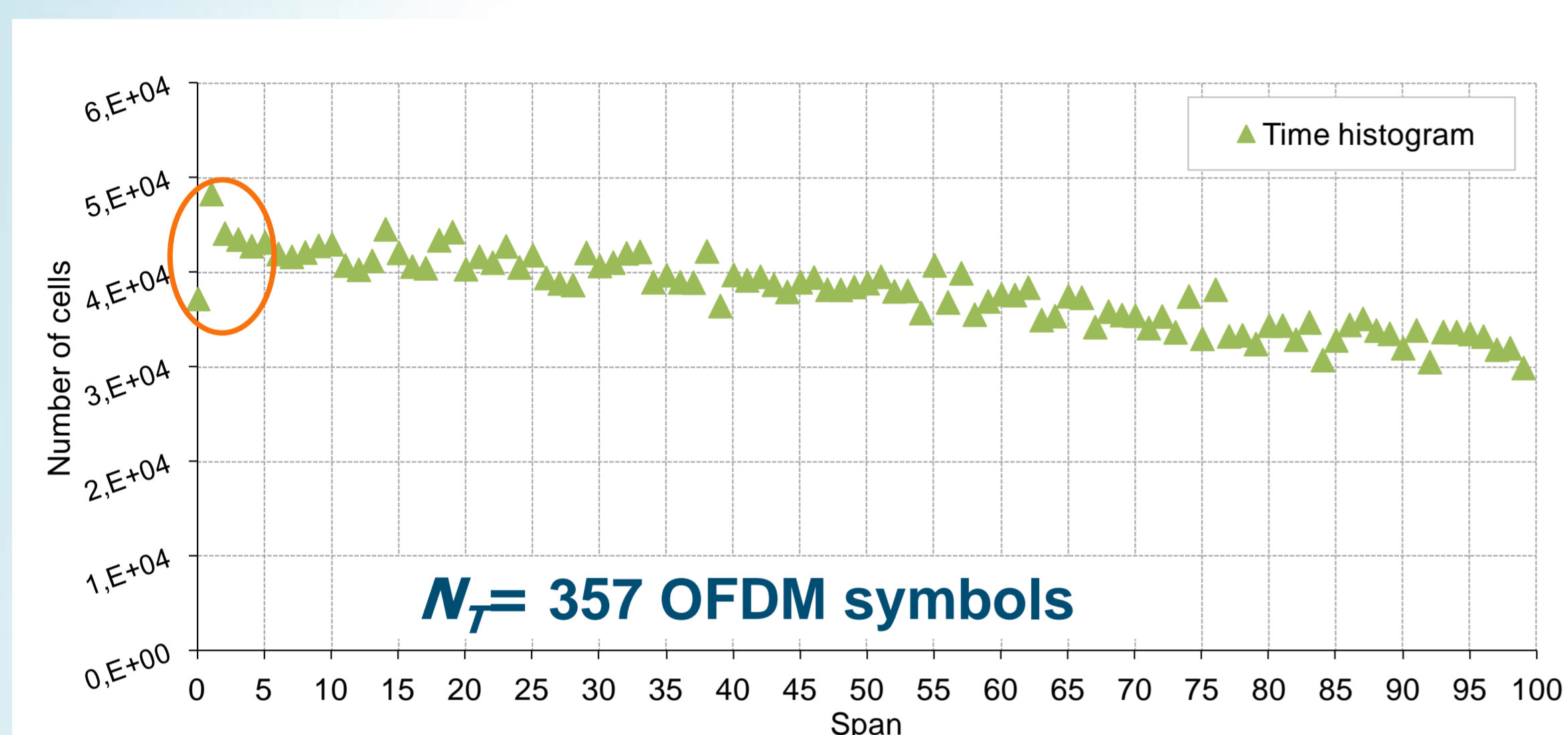
## Motivations

- In terrestrial broadcast standards such as DVB-T2, channel interleaving is achieved through stacking several specific interleavers => no global optimization is performed, bad interactions between the different interleavers sometimes occur
- Aim:** propose design criteria for channel interleavers based on span properties in the time and frequency domains and on the distribution of mutual information (MI)

## Span properties

- Frequency span:**  $S_f(i) = \min_j (|f_i - f_j| + |f_{\Pi(i)} - f_{\Pi(j)}|)$
- Time span:**  $S_t(i) = \min_j (|t_i - t_j| + |t_{\Pi(i)} - t_{\Pi(j)}|)$
- Design criterion:** maximize time and frequency spans

## Analysis of DVB-T2 interleaver



CI: Cell Interleaver TI: Time Interleaver, FI: frequency Interleaver

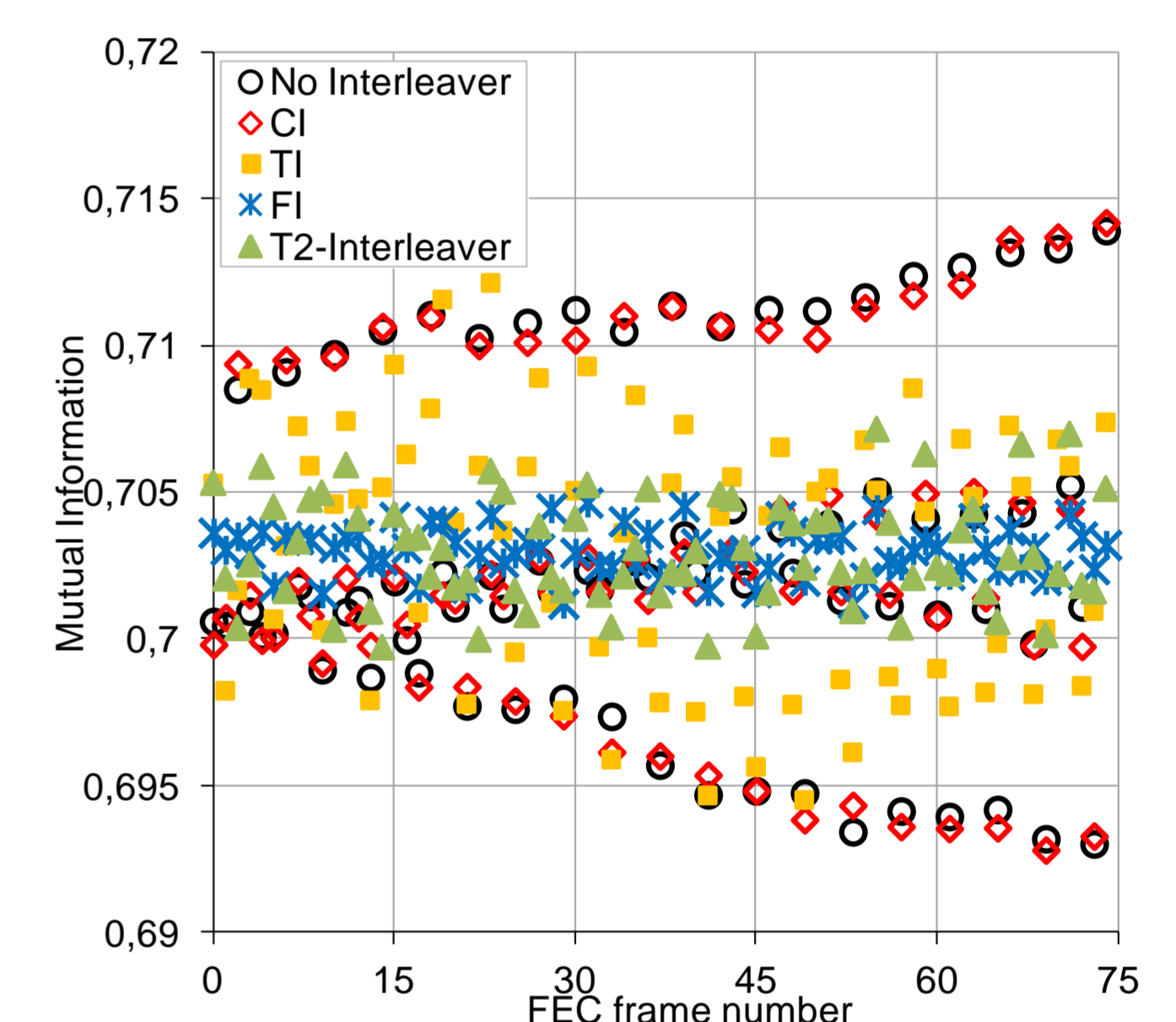
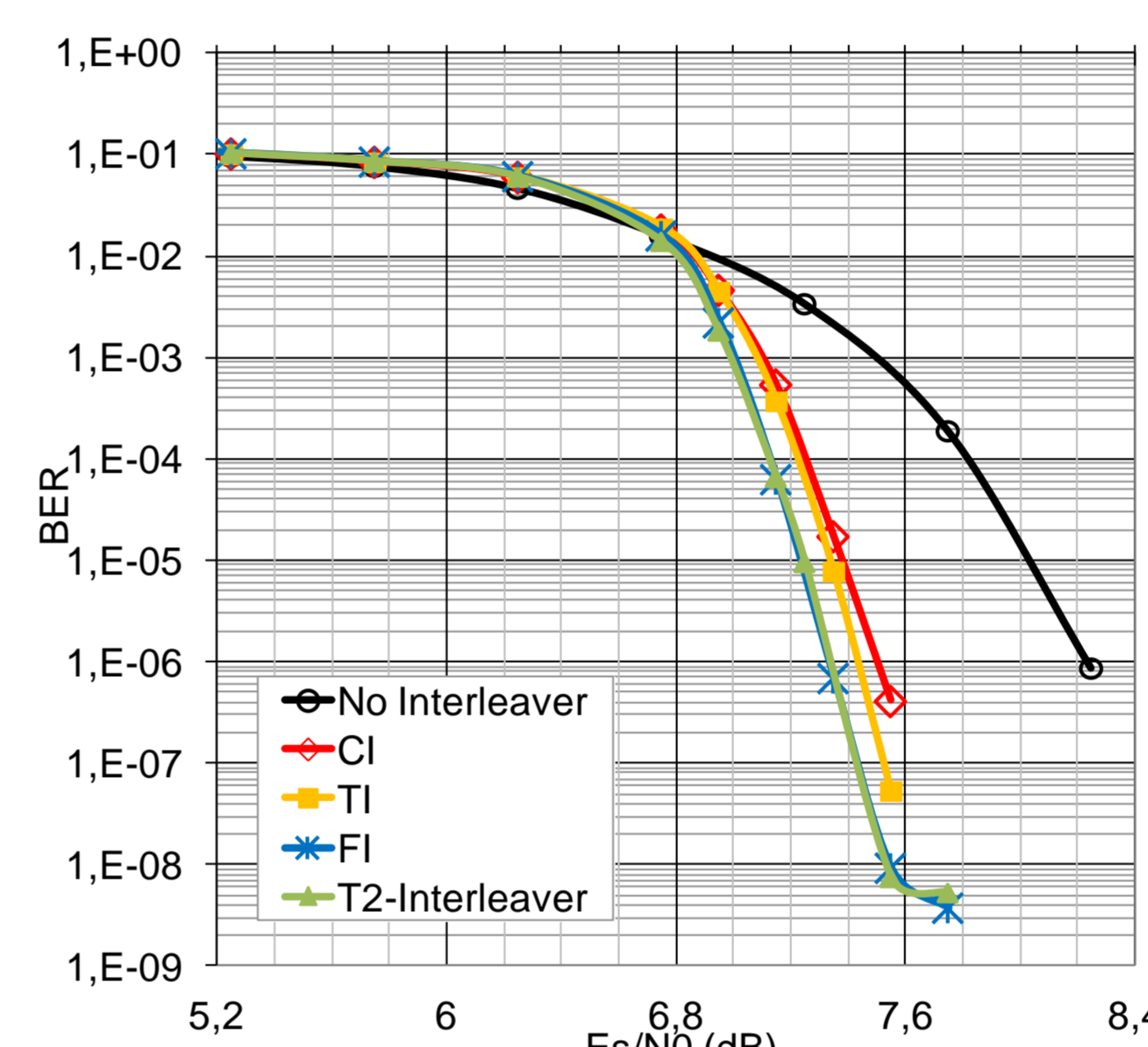
## Mutual information distribution

- Average mutual information (MI) per FEC block**

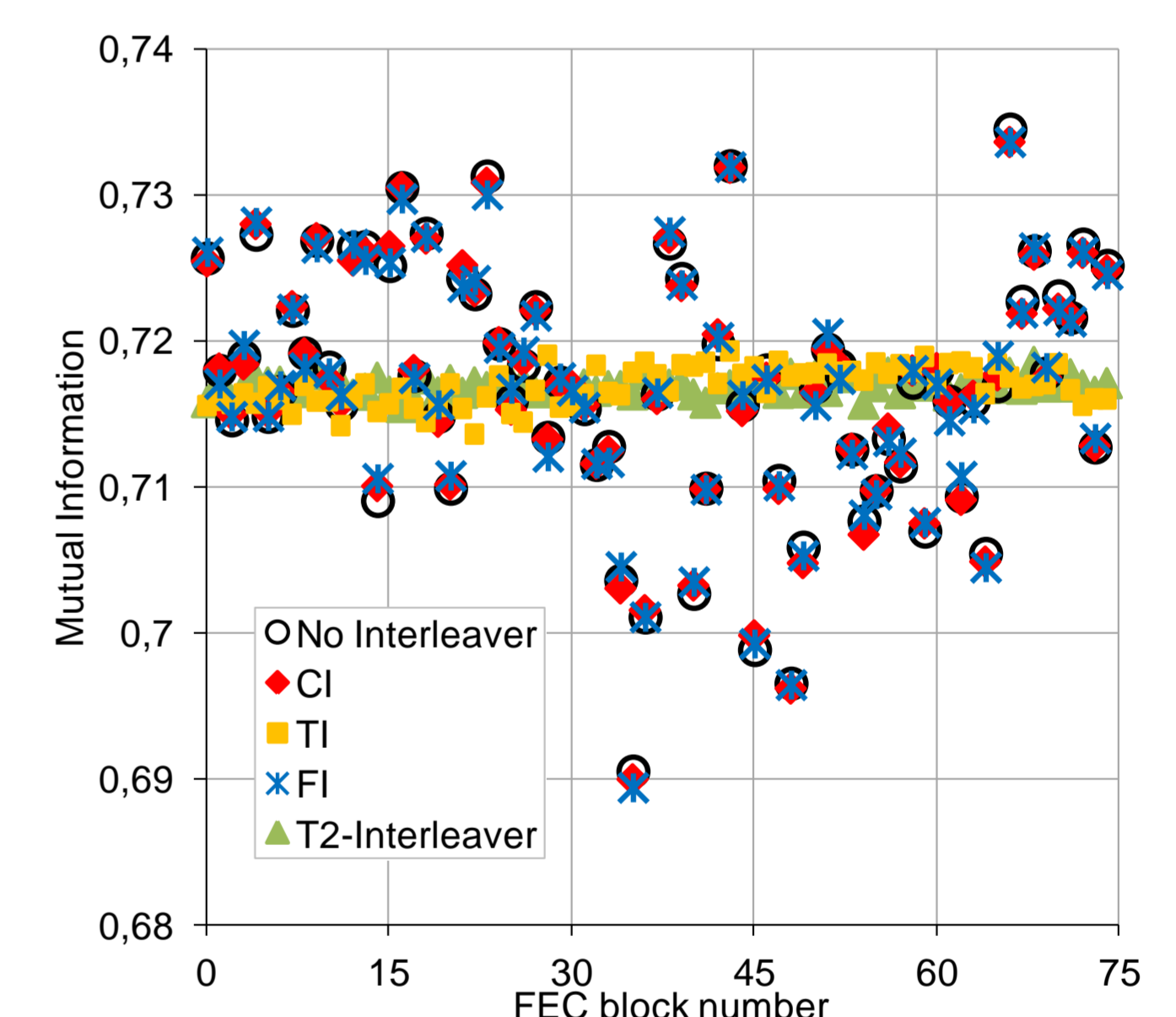
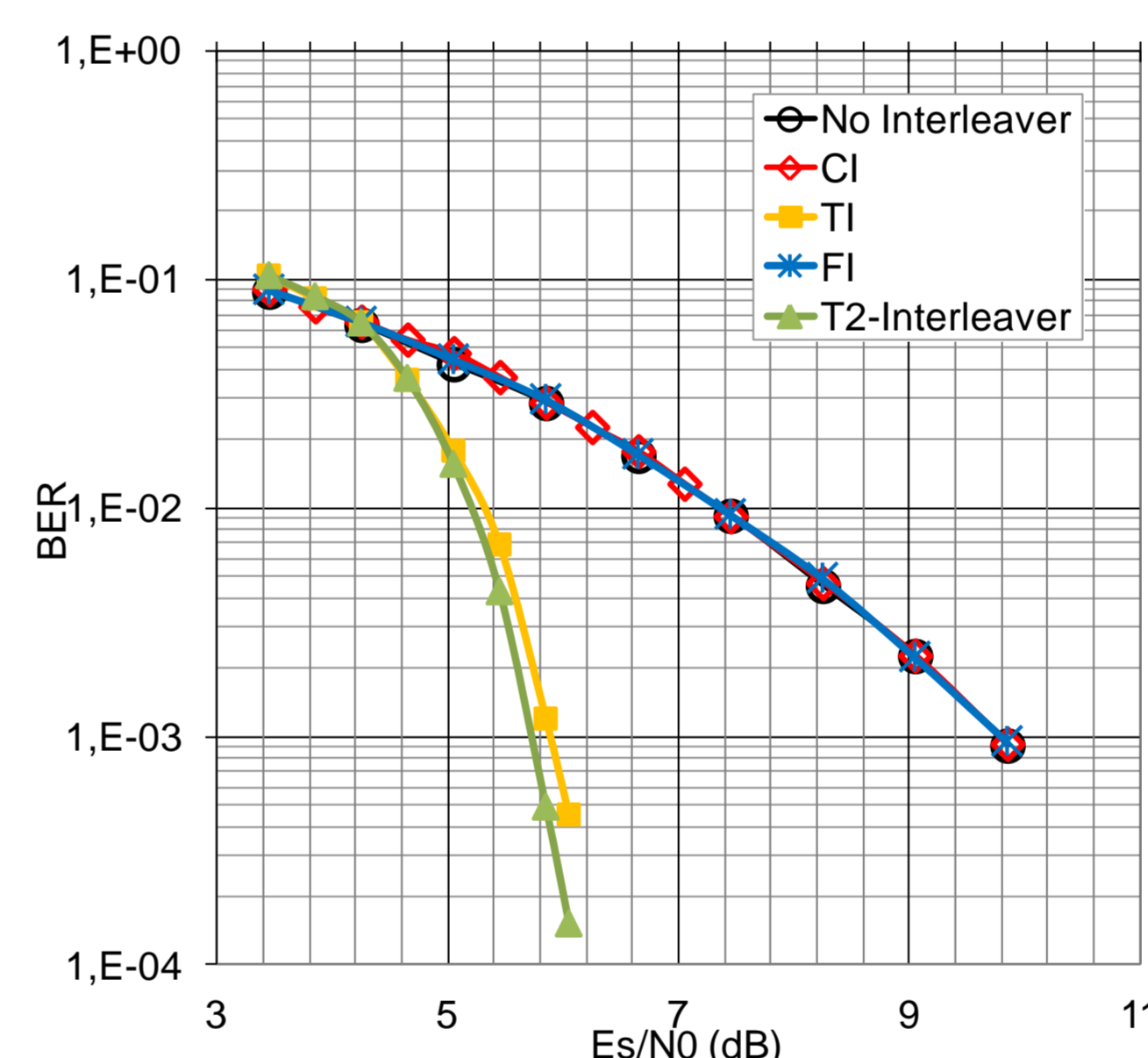
$$AMI_j = \log 2 - \sum_{i=1}^N [\max^*(0, z_i (-1)^{b_i})] / N$$

- Design criterion:** minimize the variance of MI distribution over FEC blocks in the OFDM frame => uniform distribution of the MI

P1 channel



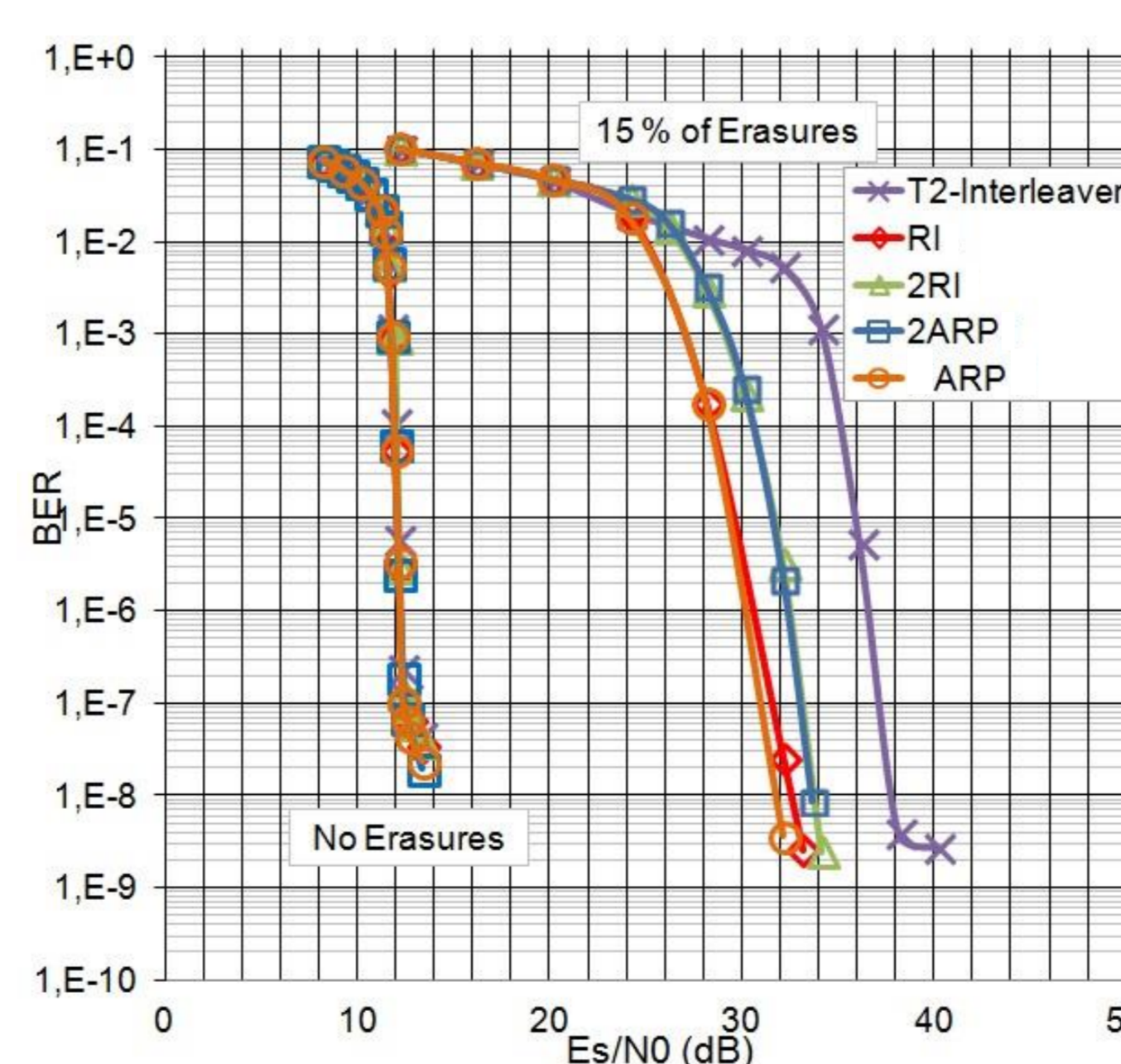
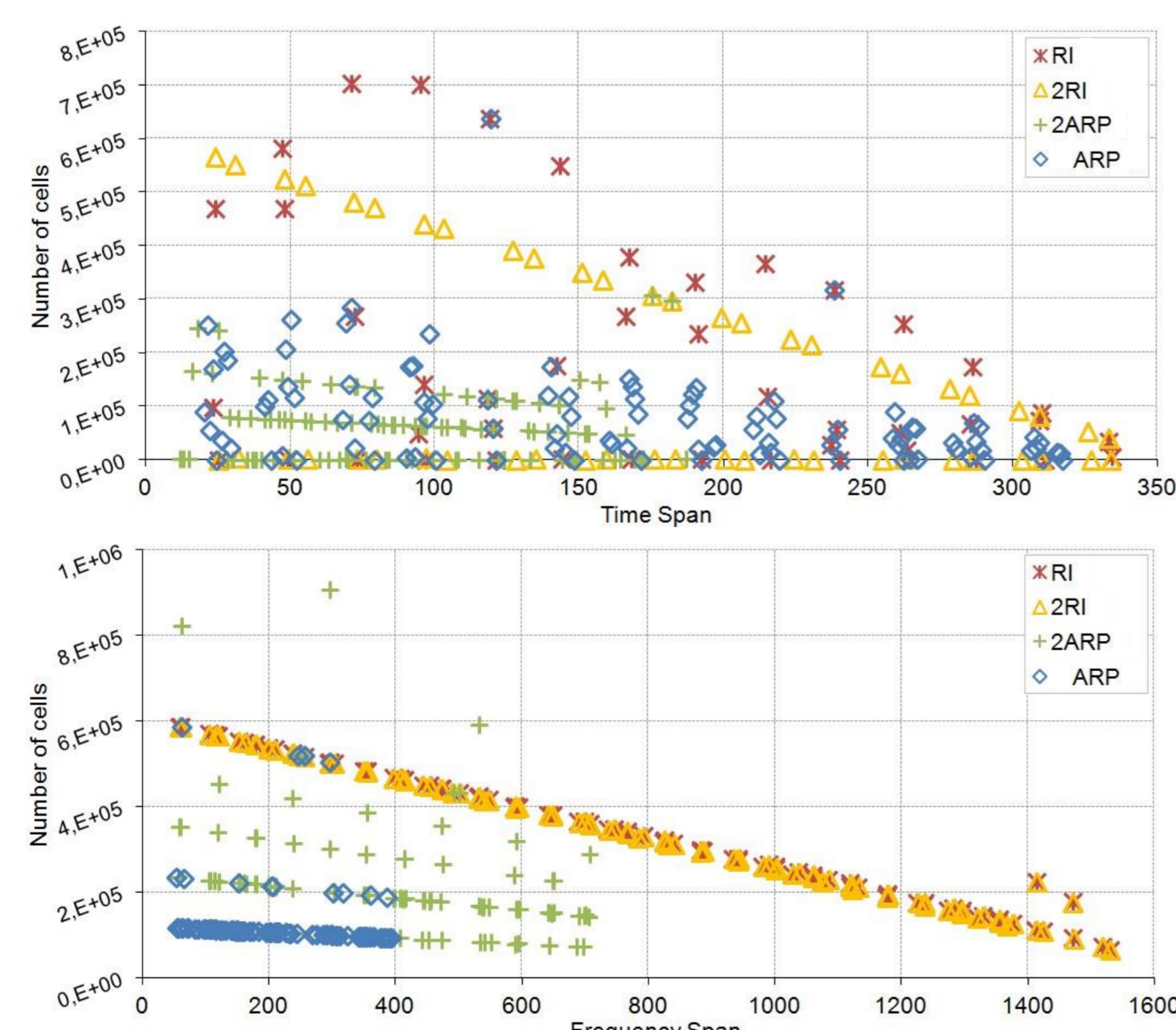
TU6 channel



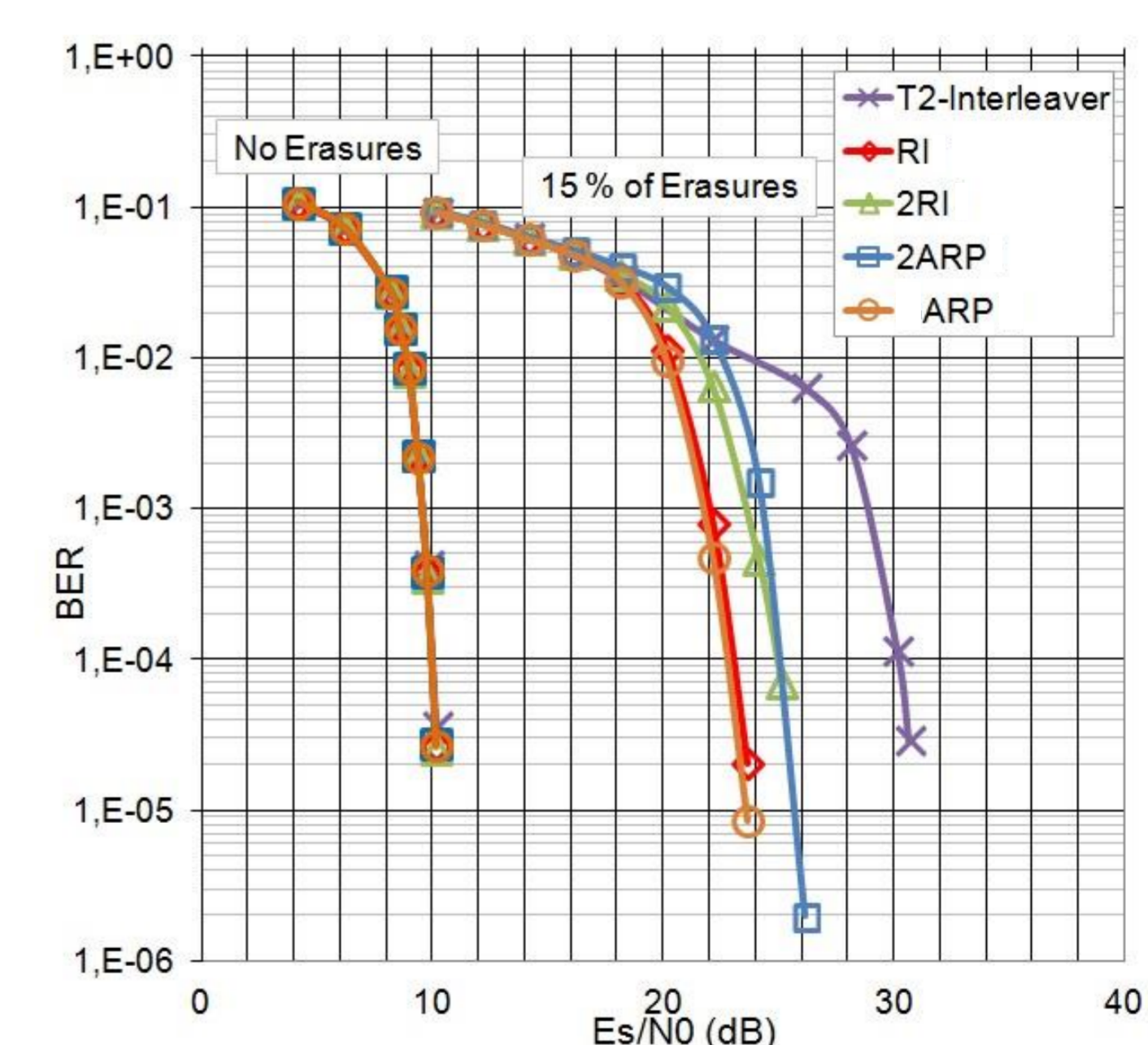
## Design of interleavers with good span and MI distribution properties

### Studied interleavers

- Regular interleaver (RI):**  $\Pi(i) = P \times i \text{ mod } N_C$  with  $P = P_t \times N_F + P_f$ ,  $N_F$  being the number of cells in an OFDM frame
- Double regular interleaver (2RI):**  $\Pi(i) = N_F \times t_{\Pi(i)} + f_{\Pi(i)}$  with  $t_{\Pi(i)} = (P_t \times [i/N_F] + S_T \times i \text{ mod } N_F) \text{ mod } N_T$  and  $f_{\Pi(i)} = P_f \times i \text{ mod } N_F$
- Almost regular permutation (ARP):** same as RI with cyclic shift in  $\Pi(i)$  expression
- Double almost regular permutation (2ARP):** same as 2RI with cyclic shifts in  $t_{\Pi(i)}$  and  $f_{\Pi(i)}$  expressions



P1 channel, LDPC code rate 37/45



TU6 channel, LDPC code rate 37/45