



Designing nanoparticles during the drawing step

Manuel Vermillac, Jean-François Lupi, Francois Peters, P Vennegues, Martiane Cabié, Thomas Neisius, C Kucera, J Ballato, Wilfried Blanc

► To cite this version:

Manuel Vermillac, Jean-François Lupi, Francois Peters, P Vennegues, Martiane Cabié, et al.. Designing nanoparticles during the drawing step. International Conference on Rare-Earth Doped Glass Materials and Fibre Lasers (EAGLES), Oct 2016, Trento, Italy. <hal-01392991>

HAL Id: hal-01392991

<https://hal.archives-ouvertes.fr/hal-01392991>

Submitted on 5 Nov 2016

HAL is a multi-disciplinary open access archive for the deposit and dissemination of scientific research documents, whether they are published or not. The documents may come from teaching and research institutions in France or abroad, or from public or private research centers.

L'archive ouverte pluridisciplinaire **HAL**, est destinée au dépôt et à la diffusion de documents scientifiques de niveau recherche, publiés ou non, émanant des établissements d'enseignement et de recherche français ou étrangers, des laboratoires publics ou privés.

DESIGNING NANOPARTICLES DURING THE DRAWING STEP

M. Vermillac¹, J.-F. Lupi¹, F. Peters¹, P. Vennéguès², M. Cabié³, T. Neisius³, C. Kucera⁴,
J. Ballato⁴, W. Blanc¹

¹ *Université Nice Sophia Antipolis, CNRS, LPMC UMR 7336, 06108 Nice Cedex 2, France*

² *Centre de Recherche sur l'Hétéro-épitaxie et ses Applications, UPR CNRS 10, 06560 Valbonne Sophia Antipolis, France*

³ *Fédération des sciences chimiques de Marseille, Aix-Marseille Université - CP2M, Université d'Aix Marseille, Case 221, 13397 Marseille cedex 20, France*

⁴ *Charles H. Townes Optical Science and Engineering Laboratories, Center for Optical Materials Science and Engineering Technologies (COMSET) and the Department of Materials Science and Engineering, Clemson University, Clemson, South Carolina 29634 USA
wilfried.blanc@unice.fr*

Nanoparticles in the core of optical fibres are widely studied due to the opportunity they give to tailor spectroscopic properties. Such fibres are usually obtained by drawing at high temperature a preform containing nanoparticles [1]. This study focuses on the effect of the fibre drawing on nanoparticles. We fabricated an MCVD optical preform by doping the porous layer with nanoparticles. The optical fibre was studied by a FIB/SEM tomography [2].

Figure 1 is the volume reconstruction of the core of the optical fibre. The yellow phase represents nanoparticles inside the core of the optical fibre. This reconstruction shows evidences of break-up, elongation and coalescence of particles [3]. These features will be discussed according to phenomena well known from the rheology of emulsions and polymers [4]. It comes from a competition between viscous stresses of the flow and surface tension.

Observation of these size-controlling phenomena occurring during fibre drawing offer new perspectives to tailor the size of nanoparticles and are therefore of great interest for light scattering issues.

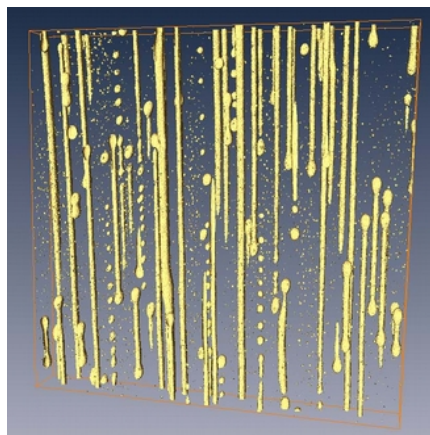


Figure 1: 3D rendering of the particles in the core of the optical fibre. The drawing direction is vertical. Width of the volume reconstructed by the FIB/SEM process is 5 μm .

[1] W. Blanc, and B. Dussardier, *J. Opt.* 45 (2016) 247-254.

[2] J.R. Wilson *et al.*, *Nat. Mater.* 5 (2006) 541-544.

[3] M. Vermillac *et al.*, *J. Am. Ceram. Soc.* (submitted)

[4] H. P. Grace, *Chem. Eng. Commun.* 14 (1982) 225-277.