



# Spatial patterns in glacier characteristics and area changes from 1962 to 2006 in the Kanchenjunga–Sikkim area, eastern Himalaya

Adina Racoviteanu, Y Arnaud, M.W Williams, W.F Manley

## ► To cite this version:

Adina Racoviteanu, Y Arnaud, M.W Williams, W.F Manley. Spatial patterns in glacier characteristics and area changes from 1962 to 2006 in the Kanchenjunga–Sikkim area, eastern Himalaya. *The Cryosphere*, Copernicus 2014, 9, pp.505-523. <10.5194/tc-9-505-2015>. <insu-01164662>

**HAL Id: insu-01164662**

**<https://hal-insu.archives-ouvertes.fr/insu-01164662>**

Submitted on 17 Jun 2015

**HAL** is a multi-disciplinary open access archive for the deposit and dissemination of scientific research documents, whether they are published or not. The documents may come from teaching and research institutions in France or abroad, or from public or private research centers.

L'archive ouverte pluridisciplinaire **HAL**, est destinée au dépôt et à la diffusion de documents scientifiques de niveau recherche, publiés ou non, émanant des établissements d'enseignement et de recherche français ou étrangers, des laboratoires publics ou privés.



# Spatial patterns in glacier characteristics and area changes from 1962 to 2006 in the Kanchenjunga–Sikkim area, eastern Himalaya

A. E. Racoviteanu<sup>1</sup>, Y. Arnaud<sup>1,2</sup>, M. W. Williams<sup>3</sup>, and W. F. Manley<sup>4</sup>

<sup>1</sup>Laboratoire de Glaciologie et Géophysique de l'Environnement, 54 rue Molière, Domaine Universitaire, BP 96, 38402 Saint Martin d'Hères CEDEX, France

<sup>2</sup>Laboratoire d'Étude des Transferts en Hydrologie et Environnement, BP 53, 38401 Saint Martin d'Hères CEDEX, France

<sup>3</sup>Department of Geography and Institute of Arctic and Alpine Research, University of Colorado, Boulder, CO 80309, USA

<sup>4</sup>Institute of Arctic and Alpine Research, University of Colorado, Boulder, CO 80309, USA

Correspondence to: A. Racoviteanu (racovite@gmail.com)

Received: 2 April 2014 – Published in The Cryosphere Discuss.: 18 July 2014

Revised: 29 January 2015 – Accepted: 23 February 2015 – Published: 16 March 2015

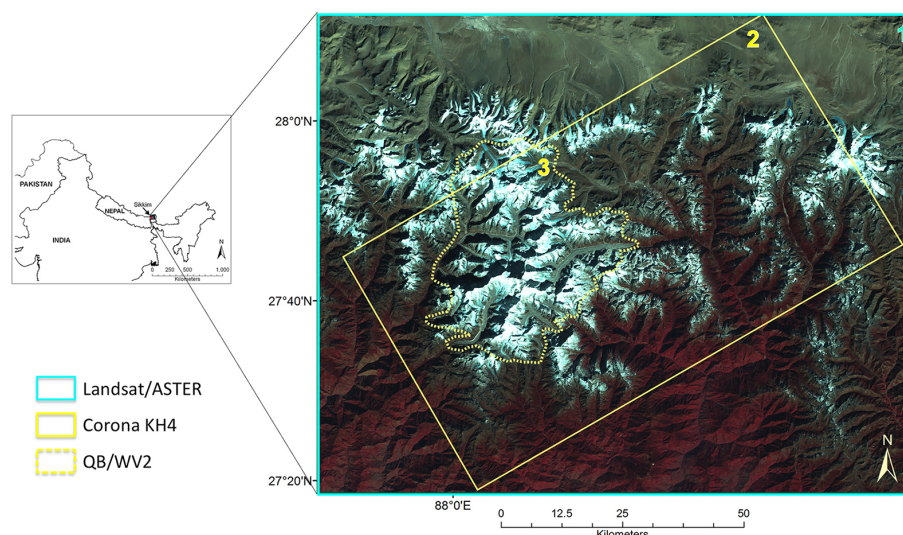
**Abstract.** This study investigates spatial patterns in glacier characteristics and area changes at decadal scales in the eastern Himalaya – Nepal (Arun and Tamor basins), India (Teesta basin in Sikkim) and parts of China and Bhutan – based on various satellite imagery: Corona KH4 imagery, Landsat 7 Enhanced Thematic Mapper Plus (ETM+) and Advanced Spaceborne Thermal Emission Radiometer (ASTER), QuickBird (QB) and WorldView-2 (WV2). We compare and contrast glacier surface area changes over the period of 1962–2000/2006 and their dependency on glacier topography (elevation, slope, aspect, percent debris cover) and climate (solar radiation, precipitation) on the eastern side of the topographic barrier (Sikkim) versus the western side (Nepal).

Glacier mapping from 2000 Landsat ASTER yielded  $1463 \pm 88 \text{ km}^2$  total glacierized area, of which  $569 \pm 34 \text{ km}^2$  was located in Sikkim and  $488 \pm 29 \text{ km}^2$  in eastern Nepal. Supraglacial debris covered 11 % of the total glacierized area, and supraglacial lakes covered about 5.8 % of the debris-covered glacier area alone. Glacier area loss (1962 to 2000) was  $0.50 \pm 0.2 \text{ \% yr}^{-1}$ , with little difference between Nepal ( $0.53 \pm 0.2 \text{ \% yr}^{-1}$ ) and Sikkim ( $0.44 \pm 0.2 \text{ \% yr}^{-1}$ ). Glacier area change was controlled mostly by glacier area, elevation, altitudinal range and, to a smaller extent, slope and aspect. In the Kanchenjunga–Sikkim area, we estimated a glacier area loss of  $0.23 \pm 0.08 \text{ \% yr}^{-1}$  from 1962 to 2006 based on high-resolution imagery. On a glacier-by-glacier basis, clean glaciers exhibit more area loss on average from 1962 to 2006 (34 %) compared to debris-covered glaciers

(22 %). Glaciers in this region of the Himalaya are shrinking at similar rates to those reported for the last decades in other parts of the Himalaya, but individual glacier rates of change vary across the study area with respect to local topography, percent debris cover or glacier elevations.

## 1 Introduction

Himalayan glaciers have generated a lot of concern in the last few years, particularly with respect to potential consequences of glacier changes on the regional water cycle (Kaser et al., 2010; Immerzeel et al., 2010, 2012; Racoviteanu et al., 2013a). In the last decades, the availability of low-cost data from optical remote sensing platforms with global coverage provided opportunities for glacier mapping at regional scales. Remote sensing techniques have considerably helped improve estimates of glacier area changes (Bhambri et al., 2010; Bolch, 2007; Bajracharya et al., 2007; Kamp et al., 2011; Bolch et al., 2008a), glacier lake changes (Bajracharya et al., 2007; Bolch et al., 2008b; Gardelle et al., 2011; Wessels et al., 2002) and region-wide glacier mass balance (Berthier et al., 2007; Bolch et al., 2011; Gardelle et al., 2013; Kääb et al., 2012), but significant gaps do remain. The new global Randolph Glacier Inventory (RGI) v.4 (Pfeffer et al., 2014) provides a global data set of glacier outlines intended for large-scale studies; however, in some regions the quality varies and the outlines may not be suitable for detailed regional analysis of glacier parameters. A new Landsat-based inventory



**Figure 1.** Location map of the study area, with spatial domains 1, 2 and 3 corresponding to the coverage of each satellite data. The background is a Landsat ETM+ color composite (432) overlaid on shaded relief from the SRTM DEM.

has been compiled using imagery from 1999 to 2003 that, along with the current study, may help improve the accuracy in some areas of RGI (Nuimura et al., 2014). Some other regional glacier inventories have been constructed in the past, for example for the western part of the Himalaya (e.g., Kamp et al., 2011; Bhambri et al., 2011; Frey et al., 2012), but only a few are available for the eastern extremity of the Himalaya (e.g., Krishna, 2005; Bahuguna, 2014; Basnett et al., 2013; Bajracharya et al., 2014; Kulkarni and Narain, 1990). The use of remote sensing for glacier mapping in this area is limited by frequent cloud cover and sensor saturation due to unsuitable gain settings and the persistence of seasonal snow, which hampers quality satellite image acquisition. Furthermore, this area has very limited reliable baseline topographic data needed for glacier change detection, as discussed in detail in Bhambri and Bolch (2009). The earliest Indian glacier maps date from topographic surveys conducted by expeditions in the mid-nineteenth century (i.e. Mason, 1954), but these are limited to a few glaciers. The Geologic Survey of India (GSI) inventory based on 1970s Survey of India maps (Sangewar and Shukla, 2009; Shanker, 2001) is not in the public domain. For eastern Nepal, 1970s topographic maps from Survey of India on a 1 : 63 000 scale are available, but their accuracy is not known with certainty. Given these limitations, declassified Corona imagery from the 1960s and 1970s has increasingly been used to develop baseline glacier data sets, for example in the Tien Shan (Narama et al., 2010), Nepal Himalaya (Bolch et al., 2008a) and parts of Sikkim Himalaya (Raj et al., 2013).

With a wide variety of satellite data becoming available, the topographic and climatic controls on glacier surface area have received increasing attention in recent studies, particularly with respect to debris-covered glaciers (Basnett et al.,

2013; Thakuri et al., 2014; Bolch et al., 2008a; Salerno et al., 2008). Some studies have characterized the small-scale glacier surface topography of debris-covered glaciers using field-based surveys (Iwata et al., 2000; Sakai and Fujita, 2010; Zhang et al., 2011), while other studies focused on understanding patterns at the mountain-range scale (Scherler et al., 2011; Bolch et al., 2012; Gardelle et al., 2013; Racoviteanu et al., 2014). Glacier shrinkage and mass loss has been documented in the Himalaya concomitantly with an increase in debris cover (Bolch et al., 2011; Nuimura et al., 2012). However, the influence of debris cover on glacier mass balance remains debatable (Scherler et al., 2011; Kääb et al., 2012), and modeling of melt under the debris cover is subject to uncertainties due to limited field-based measurements of debris thickness needed for model parameterization (Zhang et al., 2011; Foster et al., 2012; Mihalcea et al., 2008a, b).

While significant progress has been made in recent years in remote sensing glacier mapping in the Himalaya, some of the subregions still need updated glacier area and surface characteristics including debris cover. The objective of this study is twofold: (1) to present the current glacier distribution and characteristics in a data-scarce area of the eastern Himalaya based on an updated 2000 Landsat 7 Enhanced Thematic Mapper Plus (ETM+) and Advanced Spaceborne Thermal Emission Radiometer (ASTER) inventory, along with elevation data from the Shuttle Radar Topography Mission (SRTM); and (2) to investigate spatial patterns in glacier surface area changes from 1962 (Corona KH4) to 2000 (Landsat/ASTER) and 2006 QuickBird (QB)/2009 WorldView-2 (WV2) and their dependence on topographic and climatic factors, with a particular emphasis on debris-covered glacier tongues. These updated glacier data sets will help filling a gap in global glacier inventories such as the RGI

(Pfeffer et al., 2014), as well as for subsequent future mass balance applications at regional scales.

## 2 Study area

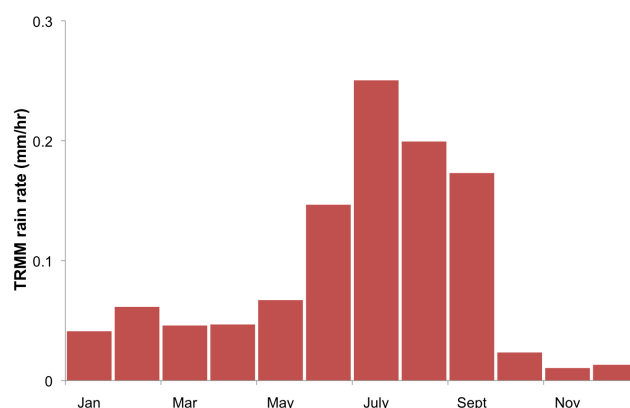
The study area encompasses glaciers in the eastern Himalaya ( $27^{\circ}04'52''$ – $28^{\circ}08'26''$  N latitude and  $88^{\circ}00'57''$ – $88^{\circ}55'50''$  E longitude), located on either side of the border between Nepal and India in the Kanchenjunga–Sikkim area (Fig. 1). Based on SRTM data, relief in this area ranges from 300 m at the bottom of the valleys to 8598 m (Mt. Kanchenjunga). Valley glaciers cover about 68 % of the glacierized area, mountain glaciers cover 28 % and the remaining area is made up of cirque glaciers and aprons (Mool et al., 2002). The glacier ablation area is typically covered by heavy debris cover originating from rockfall on the steep slopes (Mool et al., 2002), reaching up to a thickness of several meters at the glacier termini (Kayastha et al., 2000). The eastern part of this area constitutes the Sikkim province of India, and the western part is located in eastern Nepal and encompasses the Tamor basin and parts of the Arun basin. Climatically, this area of the Himalaya is dominated by the South Asian summer monsoon circulation system (Bhatt and Nakamura, 2005) caused by the inflow of moist air from the Bay of Bengal to the Indian subcontinent during the summer (Benn and Owen, 1998; Yanai et al., 1992). The Himalaya and Tibetan plateau act as a barrier to the monsoon winds, bringing about 77 % of precipitation on the south slopes of the Himalaya during the summer months (May–September) (Fig. 2). This climatic particularity causes a “summer-accumulation” glacier regime type, with accumulation and ablation occurring simultaneously in the summer (Ageta and Higuchi, 1984). In Sikkim, rainfall amounts range from 500 to 5000 mm yr<sup>−1</sup>, with annual averages of 3580 mm recorded at Gangtok station (1812 m; 1951–1980) (IMD, 1980), and 164 rainy days per year (Nandy et al., 2006). Mean minimum and maximum daily temperatures at Gangtok station were reported as 11.3 and 19.8 °C, with an average of 15.5 °C based on the same observation record (IMD, 1980).

## 3 Methodology

### 3.1 Data sources

#### 3.1.1 Satellite imagery

Remote sensing data sets used in this study are summarized in Table 1 and included (1) baseline remote sensing data from Corona declassified imagery (year 1962), (2) “reference” data sets for 2000s from Landsat ETM+ and ASTER and (3) high-resolution imagery from QB (2006) and WV2 (2009), all described below.



**Figure 2.** Precipitation regime over domain 1 expressed as rain rate, from the TRMM 2B31 data averaged for the period 1998–2010. The graph shows the monsoon period from June to September, with a peak precipitation in July, and the influence of the northeastern monsoon during the winter/early spring (January–March).

1. Corona KH4 scenes (1962) were obtained from the US Geological Survey EROS Data Center (USGS-EROS, 1962). The Corona KH4 system was equipped with two panoramic cameras (forward-looking and rear-looking with 30° separation angle) and acquired imagery from February 1962 to December 1963 (Dashora et al., 2007). We chose images from the end of the ablation season (October/November in this part of the Himalaya), suitable for glaciologic purposes. Six Corona stripes were scanned at 7 microns by USGS from the original film strips, with a reported nominal ground resolution of 7.62 m (Dashora et al., 2007). Corona images are known to contain significant geometric distortions due to cross-path panoramic scanning. The Frame Ephemeris Camera and Orbital Data camera/spacecraft parameters (roll, pitch, yaw, speed, altitude, azimuth, sun angle and film scanning rate) for Corona missions, needed to construct a camera model and to correct these distortions, are not easily available. To orthorectify the scenes, we defined a non-metric camera model in ERDAS Leica Photogrammetric Suite (LPS), with focal length, air photo scale and flight altitude extracted from the declassified documentation of the KH4 mission (Dashora et al., 2007). We used the bundle block adjustment procedure in LPS to simultaneously estimate the orientation of all the CORONA stripes on the basis of 117 ground control points (GCPs). Latitude and longitude ( $x$ ,  $y$ ) information (of the GCPs) were extracted from the panchromatic band of the 2000 Landsat ETM+ image (15 m spatial resolution) on non-glacierized terrain including moraines, river crossings and outwash areas, whereas elevation information ( $z$ ) were extracted from the SRTM DEM v.4 (CGIAR-CSI 2004).



**Table 1.** Summary of satellite imagery used in this study.

Sensor	Scene ID	Date	Spatial resolution	Image type
Corona KH4	DS009048070DA244 DS009048070DA243 DS009048070DA242	25 Oct 1962	7.5 m	Panchromatic
Landsat ETM+	L7CPF20001001_20001231_07	26 Dec 2000	15 m 28.5 m 90 m	Panchromatic Visible, shortwave Thermal infrared
ASTER	AST_L1A#003_12012000051205_07292001131755 AST_L1A#003_12012000051214_07292001131813 AST_L1A_00311272001045729_02222004173619 AST_L1A#00301052002050207_01302002193030 AST_L1A#00301052002050216_01302002193046 AST_08_00310292002045428_20101212181710_16443	1 Dec 2000 1 Dec 2000 27 Nov 2001 5 Jan 2002 5 Jan 2002 29 Oct 2002	15 m 30 m 90 m 90 m	Visible Shortwave Thermal infrared Surface kinetic temperature
QuickBird	1010010004BD8700 1010010004BB8F00	1 Jan 2006 6 Jan 2006	2.4 m	Visible, shortwave
WorldView -2	102001000FBA1D00 102001000586E700	2 Dec 2010 1 Dec 2009	0.50 m	Panchromatic

Tie points were automatically extracted in LPS on overlapping Corona strips, and visually checked on the Landsat image. The Corona stripes were mosaicked in ERDAS LPS to produce the final orthorectified image, with a horizontal accuracy (RMSE  $x$ ,  $y$ ) of the bundle block adjustment of 10.5 m. The orthorectification process of the 1962 Corona yielded a RMSE  $x$ ,  $y$  error of  $\pm 10$  m and the actual “ground” RMSE  $x$ ,  $y$  of the Corona block of  $\sim 60$  m. A trend analysis on the horizontal shifts between Corona and the reference Landsat scene showed that the largest errors occurred towards the edges of the images, mostly outside the glaciers, and did not impact the area change analysis.

2. The orthorectified Landsat ETM+ scene from December 2000, obtained from the USGS Eros Data Center, was the main data set for the updated glacier inventory. In addition, six orthorectified ASTER products (2000–2002) were obtained at no cost through the Global Land Ice Monitoring from Space (GLIMS) project (Raup et al., 2007). Images were selected at the end of the ablation season for minimal snow and had little or no clouds. Five of these scenes were used for on-screen manual corrections of the Landsat-based glacier outlines in challenging areas where shadows or clouds obstructed the view of the glaciers. In addition, the surface kinetic temperature product (AST08) from the 27 November 2001 ASTER scene was used for clean ice delineation of debris cover along with topographic information using a decision-tree algorithm (Racoviteanu and Williams, 2012). The 29 October 2002 scene, covering the Kanchenjunga–Sikkim area east and west of the topographic divide, was used to investigate the spatial distribution of surface temperature over selected debris-covered tongues.

3. Two QB scenes from January 2006 were obtained from Digital Globe as ortho-ready standard imagery (radiometrically calibrated and corrected for sensor and platform distortions) (Digital Globe, 2007). These scenes, covering an area of 1107 km<sup>2</sup> were well contrasted and mostly snow-free outside the glaciers. We orthorectified these scenes in ERDAS Imagine Leica Photogrammetry Suite (LPS) using rational polynomial coefficients (RPCs) provided by Digital Globe and the SRTM DEM and mosaicked them in ERDAS Imagine. The scenes were resampled to 3 m pixel size during the orthorectification process using the cubic convolution method suitable for continuous raster data in order to reduce disk space and processing time. One WV2 panchromatic, ortho-ready scene at 50 cm spatial resolution from 2 December 2010 was also obtained to cover the terminus of Zemu glacier, which was missing from the QB extent. All data sets were registered to UTM projection zone 45N, with elevations referenced to the WGS84 datum.

### 3.1.2 Elevation data sets

Two elevation data sets were used in this study:

1. The hydrologically sound, void-filled CGIAR SRTM DEM (90 m spatial resolution) (CGIAR-CSI, 2004) was used to extract glacier parameters for 2000. The SRTM data set is known to have biases on steep slopes and at higher elevations (Fujita et al., 2008; Berthier et al., 2006; Nuth and Kääb, 2011), as well as due to radar penetration on snow (Gardelle et al., 2012b). For this area, the vertical accuracy of the SRTM DEM, calculated as root mean square (RMSE  $z$ ) with respect to 25 field-based GCPs, was 31 m  $\pm$  10 m. The GCPs were obtained in the field on non-glacierized terrain including roads and bare land outside the glaciers using a Trimble Geoexplorer XE series.

Table 2. Spatial domains used for analysis and their characteristics.

Spatial domain	Number of glaciers	Area in 2000 (km <sup>2</sup> )	Details
1. Landsat/ASTER	487	1463 ± 88	The entire study area extending from Sikkim to China, as well as into parts of western Bhutan and eastern Nepal
2. Corona KH4	232	777 ± 46	Glaciers of eastern Nepal (Tamor basin) and Sikkim (Zemu basin)
3. QB/WV2	50	551 ± 34	Selected glaciers from the Kanchenjunga–Sikkim area

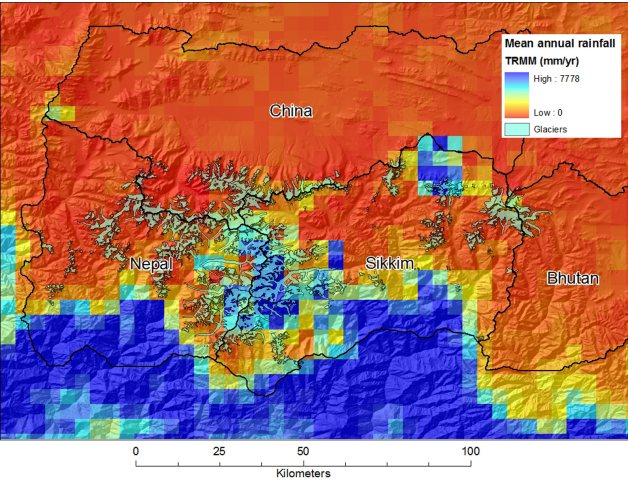


Figure 3. Spatial patterns in TRMM annual precipitation rate derived from the 3B43 data set for spatial domain 1. Also shown are the four main basins delineated based on topography and watershed functions. 2000 glacier outlines are also shown. We note several cells of high precipitation at high altitudes over the Kanchenjunga summits and parts of Tibet, most likely errors in TRMM data.

Table 3. Topographic zones in spatial domain 1.

	N side (China)	W side (Nepal)	E side (Sikkim)	E side (Bhutan)
Mean basin elevation (m)	4931	4819	4658	4491
Mean rainfall TRMM (mm yr <sup>-1</sup> )	146	805	977	383

Arun basins) and parts of Bhutan and China (Table 2). This domain was used to construct the updated 2000 glacier inventory.

The Landsat/ASTER domain was split into four subregions on the basis of east–west and north–south climate/topographic/political barriers, as shown in Fig. 3. Rainfall averages from the Tropical Rainfall Measuring Mission (TRMM) data 2B31 product (Bhatt and Nakamura, 2005; Bookhagen and Burbank, 2006) were used to characterize the subregions climatically. The data set contains rainfall estimates calibrated with ground-control stations derived from local and global gauge stations (Bookhagen and Burbank, 2006) with a spatial resolution of 0.4°, or ~ 5 km. Given the well-known biases in the TRMM data (Bookhagen and Burbank, 2006; Palazzi et al., 2013; Andermann et al., 2011), here we are not concerned with the absolute values of gridded precipitation but only with characterizing the subregions in our study area using relative rainfall values. TRMM data integrated over 10 years (1998–2007) show differences in precipitation patterns among the four regions and justifies our choice of spatial domains (Table 3). The eastern side of the study area (Sikkim) receives higher precipitation amounts than the western side (Nepal) (977 versus 805 mm yr<sup>-1</sup>). There is a pronounced north–south gradient in precipitation, with the lowest amount of precipitation noticeable on the Chinese side (146 mm yr<sup>-1</sup>) (Table 3).

2. The Swiss topographic map (1 : 150 000 scale), compiled from Survey of India maps from the 1960s and published by the Swiss Foundation for Alpine Research, was used for manual corrections of the 1962 Corona glacier outlines to discard any seasonal snow and to correct shadow areas or bright water bodies that could be misclassified as ice. The exact month or year of each quadrant or of the original air photos is not known with certainty because the original large-scale Indian topographic maps at this scale are restricted to within 100 km of the Indian border and are therefore inaccessible (Srikantia, 2000; Survey of India, 2005); however this map was useful for manual corrections of the Corona outlines.

3.2 Analysis extents

We defined three analysis extents for our study area (Fig. 1 and Table 2):

1. The Landsat/ASTER domain includes the Sikkim province of India, parts of eastern Nepal (Tamor and

2. The Corona spatial domain is a subset of the Landsat/ASTER domain, which was covered by the 1962 Corona image. Glacier surface area changes and their dependence on climate and topography were computed for this extent between two time steps: the 1960s (rep-

resented by Corona imagery) and 2000s (represented by Landsat/ASTER). Glaciers from Bhutan in the east and China in the north were not covered by the Corona image, so the area change analysis only focused on glaciers of Sikkim and eastern Nepal, east and west of the topographic divide.

3. The Kanchenjunga–Sikkim domain is a smaller subset covered by all three data sets (Landsat/ASTER, Corona and QuickBird), allowing us to extend the glacier change analysis to 2006. It comprises of 50 glaciers from the Tamor basin (Nepal) and Zemu basin (Sikkim, India), located on the southern slopes of the Himalaya. The high-resolution 1962 and 2006 imagery was used here to illustrate glacier area changes at a smaller scale, to show surface characteristics of debris-covered glaciers and to evaluate mapping of debris-covered glaciers.

### 3.3 Glacier delineation and analysis

For the 1960s, clean glacier outlines were extracted from the panchromatic Corona imagery by thresholding the digital numbers ( $DN > 200 = \text{snow/ice}$ ), chosen based on visual interpretation. Debris-covered glacier tongues were delineated manually on the basis of lateral moraines and other visual clues such as supraglacial lakes. A  $5 \times 5$  median filter was used to remove noise (isolated pixels from snowfields or internal rocks), as recommended in other studies (Racoviteanu et al., 2009; Andreassen et al., 2008). Ice polygons with area  $< 0.02 \text{ km}^2$  were not considered valid glaciers and were excluded from the analysis. Manual corrections were applied subsequently on the basis of the topographic map using on-screen digitizing in areas of poor contrast or transient snow/clouds, which obstructed the view of glaciers.

For the 2000s, glaciers were delineated from the Landsat ETM+ scene using the normalized difference snow index (NDSI) (Hall et al., 1995), with a threshold of 0.7 ( $\text{NDSI} > 0.7 = \text{snow/ice}$ ). The NDSI algorithm relies on the high reflectivity of snow and ice in the visible to near infrared wavelengths ( $0.4\text{--}1.2 \mu\text{m}$ ), compared to their low reflectivity in the shortwave infrared ( $1.4\text{--}2.5 \mu\text{m}$ ) (Dozier, 1989; Rees, 2003). Compared to other band ratios (Landsat 3/4 and 3/5), the NDSI glacier map was cleaner and less noisy and was therefore preferred (Racoviteanu et al., 2008b). A  $5 \times 5$  median filter was used here as well to remove remaining noise, and a few areas were adjusted manually on the basis of the ASTER images, notably frozen lakes misclassified as snow/ice and some glaciers underneath low clouds in the southern part of the image. Some transient snow persisting in the deep shadowed valleys was manually removed from the glacier outlines on the basis of the topographic map. Debris-covered glacier tongues were delineated using multispectral data (band ratios, surface kinetic temperature and texture) from the 27 November 2001 ASTER scene com-

bined with topographic variables in a decision tree, as described in Racoviteanu and Williams (2012).

For the QB (2006) image, clean ice surfaces were delineated using band ratios 3/4, then ISODATA clustering with a threshold of 1.07 ( $\text{snow/ice} > 1.07$ ) and a majority filter of  $7 \times 7$  to remove noise. Debris-covered tongues for this data set were delineated manually on the basis of supraglacial features (lakes and ice walls), along with lateral and frontal moraines visible on the high-resolution images. We also mapped supraglacial lakes from this high-resolution data based on band ratios along with texture analysis.

For all inventories in the Landsat/ASTER domain, ice masses were separated into glaciers on the basis of the SRTM DEM, using hydrologic functions in an algorithm developed by Manley (2008), described in Racoviteanu et al. (2009). Glacier area, terminus elevation, maximum and median elevation, average slope angle and aspect were extracted on a glacier-by-glacier basis using zonal functions on the SRTM DEM. Average glacier thickness and length were calculated from mass turnover principles and ice flow mechanics by Huss and Farinotti (2012), based on the approach of Farinotti (2009). Their method used our glacier outlines and the SRTM DEM to derive thickness estimates iteratively based on Glen's flow law and a shape factor (Paterson, 1994). For simplicity and consistency for change analysis, we assumed no shift in the ice divides over the period of analysis and excluded all nunataks and snow-free steep rock walls from the glacier area calculations. Bodies of ice above the bergschrund were considered part of the glacier (Racoviteanu et al., 2009; Raup and Khalsa, 2007). Glacier area changes (1962–2000) and their dependency on topographic and climatic variables were calculated on a glacier-by-glacier basis for the 232 glaciers in spatial domain 2 using linear regression.

### 3.4 Uncertainty estimates

Glacier outlines derived from remote sensing data at various spatial and temporal resolution are subject to various degrees of uncertainty, as discussed in recent studies (Paul et al., 2013; Racoviteanu et al., 2009). This becomes an important issue in glacier change analysis, where errors from various data sources accumulate at each processing step. The main sources of uncertainty considered here are (1) image classification errors (positional errors and/or errors due to the semi-automated glacier mapping method) and (2) conceptual errors associated with the definition of a glacier, including mapping of ice divides, mixed pixels of snow and clouds and internal rock differences, which propagate to the glacier change analysis, all described in detail in Racoviteanu et al. (2009).

1. The errors in remote sensing glacier surface areas due to classification ( $E_{\text{classif}}$ ) were estimated using Perkal's epsilon band around each glacier outline data

**Table 4.** Topographic parameters for glaciers in spatial domain 1 and subregions based on 2000s Landsat/ASTER analysis. All parameters are presented on a (a) region-by-region and (b) glacier-by-glacier basis from the SRTM DEM. Debris cover fraction is calculated as a percent of glacier area of debris-covered glaciers only.

Parameter	All	Nepal	Sikkim	Bhutan	China
(a) Region-wide averages					
Number of glaciers	487	162	186	30	109
Glacierized area (km <sup>2</sup> )	1463 ± 88	488 ± 29	569 ± 34	106 ± 6	300 ± 18
Number of debris-covered tongues	68	30	27	7	4
Debris cover area (km <sup>2</sup> )	161 ± 10	64 ± 4	78 ± 5	14 ± 1	6 ± 0.4
Debris cover (% total glacier area)	11	13	14	13	2
(b) Glacier averages					
Minimum elevation (m)	4908	4760	4702	4926	5425
Median elevation (m)	5702	5715	5569	5652	5950
Maximum elevation (m)	6793	6928	6908	6685	6530
Slope (°)	23	24	23	27	21
Aspect (°)	177	236	131	134	180
Mean glacier size (km <sup>2</sup> )	3	3	3	4	3
Length (km)	2	2	2	3	2
Thickness (m)	24	23	23	31	27
Debris cover fraction (%)	23	21	23	32	17

set (Racoviteanu et al., 2009; Bolch et al., 2010), with a  $\sim 1$ -pixel variability (Congalton, 1991). Using  $\pm 30$  m for Landsat/ASTER,  $\pm 6$  m for Corona and  $\pm 3$  m for QB outlines, the area uncertainty was  $\pm 3$ ,  $\pm 6$  and  $\pm 2$  % of the glacierized area for Corona, Landsat/ASTER and QuickBird, respectively. The Perkal method is known to slightly overestimate the errors, as described in Burrough and McDonnell (1998). Recent glacier analysis comparison experiments reported a range of uncertainty of  $< 5$  % for remote sensing glacier outlines compared to high-resolution imagery (Raup et al., 2007; Paul et al., 2013). For manually adjusted glacier outlines, particularly debris-covered tongues, we used screen digitizing in streaming mode with a high density of vertices to minimize area errors (B. Raup, National Snow and Ice Data Center, personal communication, 2014).

- Uncertainties due to different digitization of internal rocks ( $E_{\text{rocks}}$ ) were derived by comparing area changes computed with internal rocks specific to each data set versus “merged” internal rocks from all data sets. The differences in glacier data sets due to rock inconsistencies amounted to  $\sim 2$  % of the glacier area. To minimize uncertainties in the glacier area change, we merged rock outcrops from each data set and removed them from all the area calculations. The “inactive” bodies of ice above the bergschrund were included as part of the glacier (Racoviteanu et al., 2009). For simplicity, we neglected the area change that might be due to exposure of new internal rock due to glacier ice thinning.

Total errors in glacier area estimate for each data set ( $E$ ) were calculated as RMSE of the classification ( $E_{\text{classif}}$ ) and the internal rocks ( $E_{\text{rock}}$ ):

$$E = \sqrt{E_{\text{classif}}^2 + E_{\text{rocks}}^2}. \quad (1)$$

Errors in glacier surface area change ( $E_{\text{change}}$ ) from 1962 to 2000 were computed as RMSE of the total error for each time step calculated in Eq. 1:

$$E_{1962-2000} = \sqrt{E_{1962}^2 + E_{2000}^2}. \quad (2)$$

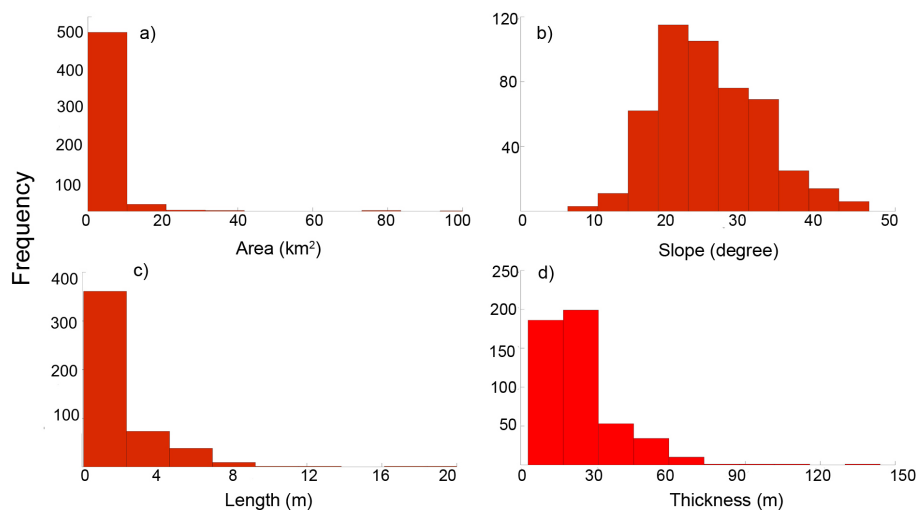
## 4 Results

### 4.1 The 2000 Landsat/ASTER glacier characteristics

The 2000 glacier inventory based on Landsat and ASTER yielded 487 glaciers (of which 162 were situated in Nepal, 186 in Sikkim, 30 in Bhutan and 109 in China), covering a total surface area of  $1463 \pm 88$  km<sup>2</sup> (Table 4a). Of the 487 glaciers in this spatial domain, 68 glaciers (13 %) had debris cover on their ablation areas. Supraglacial debris covered  $160 \pm 10$  km<sup>2</sup> (11 % of the glacierized area in spatial domain 1), with some differences between north and south slopes of the study area (discussed in Sect. 5.1). In Sikkim, supraglacial debris covered an area of  $78 \pm 5$  km<sup>2</sup> in 2000 (14 % of the glacierized area).

In 2000, glacier size ranged from 0.02 to 105 km<sup>2</sup>, with an average size of 3 km<sup>2</sup> and a median size of 0.9 km<sup>2</sup> (Table 4b). The histogram of glacier area (Fig. 4a) is skewed to





**Figure 4.** Frequency distribution of glacier parameters for the 487 glaciers in spatial domain 1 based on Landsat/ASTER analysis: (a) area, (b) slope, (c) length and (d) thickness. Glaciers smaller than  $10 \text{ km}^2$  in area,  $< 2 \text{ km}$  in length and  $< 30 \text{ m}$  thickness are prevalent, with an average slope of  $23^\circ$ .

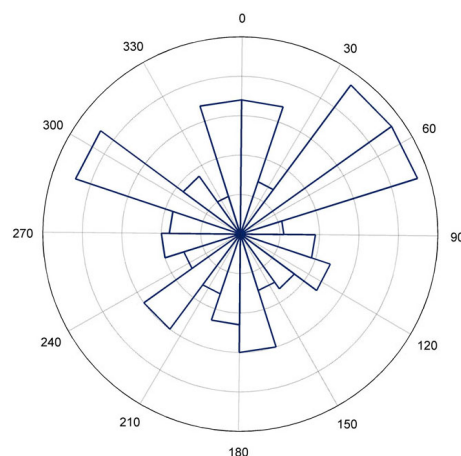
the right (skewness = 8.4), showing that glaciers with area  $< 10 \text{ km}^2$  are predominant in this region, and glacier size decreases non-linearly. The long right-tail extremes represent only a few glaciers, such as Zemu with an area  $> 100 \text{ km}^2$ .

The average slope of all glaciers in the inventory was  $23^\circ$  with a positive skew (skewness = 0.38) (Table 4b and Fig. 4b) and no significant differences among the four regions ( $p > 0.05$ ) (Table 4b). Glacier length ranged from 0.08 to 23 km (Zemu glacier), with an average of 2 km (Table 4b and Fig. 4c). Glacier thickness ranged from 3 to 144 m, with the highest frequency for thicknesses less than 30 m (Fig. 4d). The frequency distribution of both glacier length and thickness were positively skewed with long tails, indicating the prevalence of short, shallow valley-type glaciers. Glacier aspect shows two predominant orientations: west-northwest (W-NW) and east-northeast (E-NE), following the topographic divide (Fig. 5). On average, glaciers on the Nepal side had an average aspect of  $237^\circ$  (SW), whereas glaciers on the Sikkim side had an average aspect of  $131^\circ$  (SE), consistent with local topography (Table 4b).

Glacier terminus elevations in the Landsat/ASTER domain ranged from 3990 to 5777 m, with a mean of 4908 m; median glacier elevation ranged from 4515 to 6388 m, with a mean of 5702 m (Table 4b). Considering glacier median elevation as a coarse approximation of glacier equilibrium line altitude (ELA), our results are in agreement with Benn and Owen (2005), who documented higher ELAs on the northern slopes of the Himalaya (6000–6200 m) compared to ELAs on the southern slopes (4600–5600 m).

#### 4.2 Glacier area changes 1962–2000/2006

Overall, glaciers in the Corona spatial domain 2 lost  $182.5 \pm 40 \text{ km}^2$  of their area ( $19 \pm 7 \%$ , or  $0.5 \pm 0.2 \%$   $\text{yr}^{-1}$ ) from



**Figure 5.** Aspect frequency distribution of the 487 glaciers in spatial domain 1 based on Landsat/ASTER analysis. On average, glaciers in this area are preferentially oriented towards NW ( $300^\circ$ ) and NE ( $60^\circ$ ).

1962 to 2000 (Table 5). Overall, the average glacier area changes were slightly smaller on the western side of the divide (Nepal,  $16.9 \pm 4 \%$ , 1962–2000 or  $0.44 \pm 0.2 \%$   $\text{yr}^{-1}$ ) compared to the eastern side (Sikkim,  $20.1 \pm 8 \%$ , 1962–2000 or  $0.52 \pm 0.2 \%$   $\text{yr}^{-1}$ ). When focusing on a smaller glacier subset in the Kanchenjunga–Sikkim subset area (50 glaciers), we obtained an area loss of  $10 \pm 3 \%$  ( $0.23 \pm 0.08 \%$   $\text{yr}^{-1}$ ) based on high-resolution imagery (1962–2006) (Table 5). The rates of glacier area loss for this group are overall 50 % lower than the rates of loss in the larger spatial domain 1 perhaps due to higher percentage of debris (21 %) compared to the entire Landsat/ASTER spatial domain 2 (11 %).

**Table 5.** Overall glacier area changes (loss) (east versus west) for the 232 glaciers in spatial domain 2 from 1962 (Corona) to 2000 (Land-sat/ASTER).

Subregion	Area (km <sup>2</sup> )		Area loss 1962–2000		
	1962	2000	km <sup>2</sup>	%	% yr <sup>−1</sup>
Nepal	323.9 ± 10	269.1 ± 16	54.8 ± 19	16.9 ± 6	0.44 ± 0.2
Sikkim	634.7 ± 19	507.0 ± 35	127.7 ± 42	20.1 ± 8	0.52 ± 0.2
All spatial domain	958.7 ± 31	776.1 ± 47	182.5 ± 40	19.0 ± 4	0.50 ± 0.2

**Table 6.** Glacier area loss for debris-covered versus clean glaciers in spatial domain 2 from 1962 to 2000. Area loss is shown as a percent of glacier area on a glacier-by-glacier basis.

Glacier type/ Subregion	Sikkim		Nepal		All	
	Number of glaciers	Area loss (%)	Number of glaciers	Area loss (%)	Number of glaciers	Area loss (%)
Clean glaciers	144	34.7	53	31.6	197	33.9
Debris-covered glaciers	20	20.8	15	23.8	35	22.1
Both types	164	33.0	68	29.9	232	32.1

On a glacier-by-glacier basis, glaciers in the Corona domain lost 2–95 % of their area, with a mean of 32 % from 1962 to 2000 (Fig. 6). The spatial distribution of these area changes, illustrated in Fig. 6, shows that the largest area changes (> 70 % area loss) occurred for only a few isolated glaciers in the northern and southern extremities of the study area (17 glaciers). A closer examination of these glaciers revealed that these were small clean glaciers (< 0.1 km<sup>2</sup>) with steep slopes (mean of 26°), indicating a need to investigate the topographic controls on area change and clean versus debris-covered glaciers separately.

Clean glaciers lost more of their area from 1962 to 2000 (34 %) compared to debris-covered glaciers (22 %) across the region, with few differences from east to west (Nepal and Sikkim) (Table 6). The difference in mean rates of area change between clean and debris-covered glaciers was statistically significant based on a two-sample *F* test ( $p < 0.05$ ).

Figure 7a and b show a larger spread and a higher percentage of surface area loss of clean glaciers compared to debris-covered glaciers. For both glacier types, however, there is a high variability in percent area change, perhaps due to other factors such as local topography.

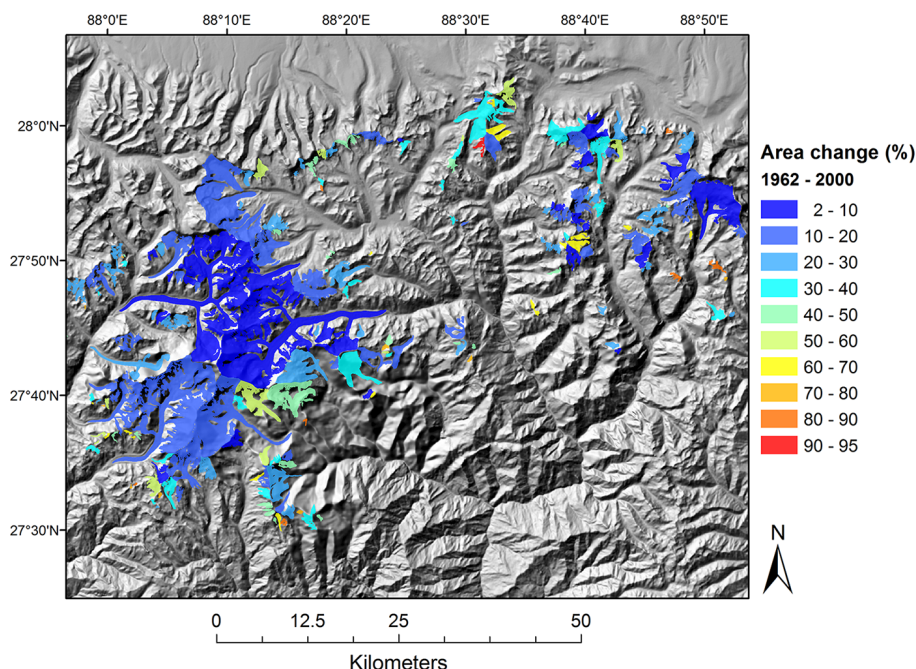
Linear regression analysis showed that percent area change per glacier was negatively correlated to glacier area, altitudinal range, and glacier median and maximum elevation (significant correlations at 99 % confidence interval,  $p < 0.01$ ) (Table 7). Glacier minimum elevation and slope were significant positive controls on glacier area change at 95 % confidence interval ( $p < 0.05$ ). Solar radiation, precipitation and percent debris were not statistically significant controls on glacier area change ( $p > 0.1$ , confidence interval 90 %) (Table 7). These are discussed in Sect. 5.3.

**Table 7.** Linear regression of area change on topographic and climatic variables for the 232 glaciers in the spatial domain 2.

Regression	Coefficient	<i>p</i> value
Glacier area	−0.47	0.0003 <sup>b</sup>
Altitudinal range	−0.01	< 0.001 <sup>b</sup>
Minimum elevation	0.008	0.02 <sup>a</sup>
Median elevation	−0.01	0.001 <sup>b</sup>
Maximum elevation	−0.01	< 0.001 <sup>b</sup>
Percent debris	−0.004	0.83
Slope	0.47	0.01 <sup>a</sup>
Aspect	0.03	0.007 <sup>b</sup>
Solar radiation	0.01	0.74
Latitude	−19.8	0.04 <sup>a</sup>
Longitude	−4.79	0.93
Precipitation	−0.002	0.26

<sup>a</sup> Significant at the 0.05 level (two-tailed); <sup>b</sup> significant at the 0.01 level (two-tailed).

A further analysis of the clean and debris-covered glaciers showed significant differences in terms of glacier area, area change, minimum elevation, altitudinal range and length based on a two-sample *F* test for variances) ( $p < 0.05$ ) (Table 8). Clean glaciers in this area are ~ 12 times smaller (1 km<sup>2</sup> on average) than debris-covered glaciers (15 km<sup>2</sup>) and they have higher termini elevations (+391 m) and an overall altitudinal range about 3 times smaller than debris-covered glaciers (Table 7). On a glacier-by-glacier basis, clean glaciers lost more area (34 %) than debris-covered glaciers (22 %) from 1962 to 2000. Clean glaciers with smaller altitudinal range tend to display more area loss compared to debris-covered glaciers.



**Figure 6.** Spatial patterns in glacier area change derived from 1962 Corona and 2000 Landsat/ASTER data on a glacier-by-glacier basis.

**Table 8.** Comparison of glacier parameters for clean glaciers versus debris-covered glaciers in spatial domain 2.

Parameter	Clean glaciers	Debris-covered glaciers
Area (km <sup>2</sup> )	1.2	15.0
Area loss (%)	33.9	22.1
Slope	25.8	24.5
Minimum elevation (m)	5105.6	4714.2
Median elevation (m)	5424.5	5538.9
Altitudinal range (m)	627.6	1928.6
Length (km)	1.3	6.7

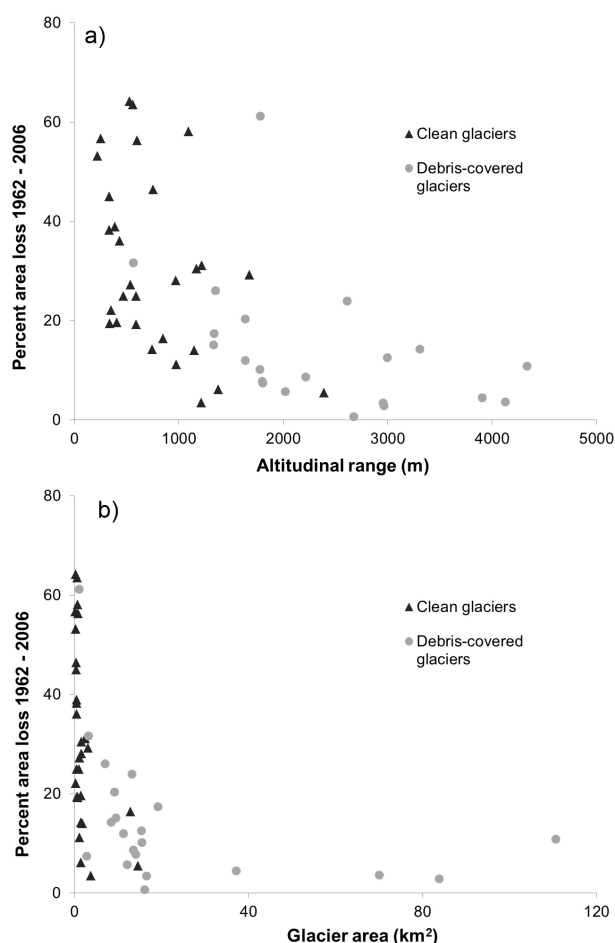
## 5 Discussion

### 5.1 Spatial distribution of glacier characteristics across the study area

One of the important steps in utilizing our glacier inventory data is to understand spatial patterns in glacier characteristics across the region. Our study area displays region-wide consistency in glacier characteristics, notably glacier area, elevation and topography across the four subregions based on the 2000 glacier data (Table 4). For example, the prevalence of small glaciers noted in this area is consistent with worldwide patterns also observed for the Cordillera Blanca of Peru in a previous study (Racoviteanu et al., 2008a). There is however variability in glacier size within eastern Himalaya: for example, the mean glacier size reported in this study area (3 km<sup>2</sup>)

is double compared to the Khumbu region west of our study area (1.4 km<sup>2</sup>) (Bajracharya and Shrestha, 2011). The glacier slope across our study area (23°) is consistent with average glacier slopes reported for the Khumbu region in Nepal (22°) (Bajracharya and Shrestha, 2011; Salerno et al., 2008), indicating a general tendency for steep glaciers across the region. There are only a few large, long glaciers in the area, such as Zemu glacier (103 km<sup>2</sup>, 23 km in 2000). With respect to glacier aspect, we also note similar predominant orientations of glaciers southwards, in the direction of the prevailing monsoon circulation consistent with other studies such as the Khumbu region (average aspect 181°) (Mool et al., 2002; Salerno et al., 2008).

The comparison of glacier characteristics across subregions points to a pronounced gradient from north to south (Bhutan/China subregions compared to Sikkim/Nepal), particularly with respect to glacier elevations and debris cover. Glaciers on the northern side of the divide (China) have higher glacier termini and median elevations compared to the southern side (Nepal and Sikkim) (+700 and +400 m, respectively) (Table 4). These differences seem to be consistent with general air circulation patterns in the area. The Asian summer monsoon brings large amounts of precipitation on the southern slopes of the Himalaya, favoring glacier growth at lower elevations and a lower ELA. In contrast, in the upper reaches of the valleys and on the Tibetan plateau, the monsoon is blocked by the topographic barrier (Clift and Plumb, 2008), causing a drier climate and higher glacier ELAs. There is a much less pronounced east–west gradient in glacier elevations, with higher glacier minimum and me-



**Figure 7.** Dependency of glacier area change during 1962–2000 on (a) glacier altitudinal range (maximum–minimum elevation) and (b) glacier area. Debris-covered glaciers are shown as grey solid circles; clean glaciers are shown as black solid triangles.

dian elevations on the western side (Nepal) (+50 m) compared to the eastern side (Sikkim). This may be explained by the location of Nepalese glaciers on the western side of the topographic divide, away from the prevailing monsoon.

Debris coverage also shows a pronounced variability north to south of the topographic divide. Himalayan glaciers are often referred to as “heavily” debris-covered, but the percent glacierized area covered by supraglacial debris varies across the mountain range. In our study area, debris cover is more prevalent on the southern side of the divide (Sikkim, 14 % of glacierized area) compared to the northern one (China, 2 % of the glacierized area), perhaps due to different geologic and topographic patterns. The northern side of the divide, which is part of the Tibetan plateau, is situated in a monsoon shadow and is therefore dry; the gentler slopes induce lower rates of erosion. In contrast, the southern slopes of the Himalaya tend to be heavily covered with debris due to the abundance of rock material from the steep slopes. The steep slopes made of soft sedimentary rocks and Precambrian

crystalline rocks (Mool et al., 2002) and are prone to high rates of erosion, particularly with large amounts of monsoon moisture. This north–south difference in debris cover amount was also noted in other studies (Scherler et al., 2011). In our study, we found a lower percent of debris coverage (21 %) than in the entire central/eastern Himalaya reported in Scherler et al. (2011) (36 % debris cover), or in the Khumbu region, west of our study area, reported by Fujii and Higuchi (1977), Nuimura et al. (2012) (34.8 %), Racoviteanu et al. (2013a) (27 %) and Thakuri et al. (2014) (32 %).

## 5.2 Regional glacier area changes

The overall rate of surface area loss of  $0.5 \pm 0.2 \text{ \% yr}^{-1}$  from 1962 to 2000 for Sikkim and eastern Nepal obtained here is in agreement with other studies from the southern slopes of the Himalaya. Similar rates of area loss ( $0.1\text{--}0.3 \text{ \% yr}^{-1}$ ) were reported from the Khumbu and Garhwal regions, west of our study area, for approximately the same time period (Thakuri et al., 2014; Basnett et al., 2013; Nuimura et al., 2012; Bolch et al., 2008a; Bhambri et al., 2011). Similarly, for glaciers of Bhutan, east of our study area, Karma et al. (2003) found an average surface glacier area loss of  $0.3 \text{ \% yr}^{-1}$  from 1963 to 1993. It is worth mentioning that these rates of area change are lower than those previously reported for the drier monsoon-transition zone in the western Himalaya (Himachal Pradesh) ( $0.7 \text{ \% yr}^{-1}$ ) by Kulkarni et al. (2007). In a more recent study, Bahuguna et al. (2014) found lower rates of glacier area loss ( $0.4 \text{ \% yr}^{-1}$ ) for the same area, which is in agreement with rates of area loss we report here for eastern part. Updated glacier area changes from other recent studies (Racoviteanu et al., 2014; Bolch et al., 2012) also point at lower rates of area loss than previously reported, particularly for the Indian Himalaya. The similar overall rate of glacier area change in the eastern compared to the western part for both debris-covered glaciers and clean glacier types suggests consistent patterns across the region (Table 5).

The smaller glacier area loss for debris-covered glaciers noted in our study is in agreement with studies from Khumbu (Nuimura et al., 2012; Thakuri et al., 2014) or other studies in the central/eastern Himalaya (Bolch et al., 2008a; Thakuri et al., 2014; Bhambri et al., 2011). These studies also reported lower rates of glacier surface area loss and even stable or less retreating glacier termini for debris-covered tongues compared to clean glaciers (Scherler et al., 2011). Area changes for debris-covered glaciers need to be interpreted with caution due to the wide variability in debris cover characteristics such as thickness. Furthermore, these stagnating or less changing tongues may not reflect the true state of the glaciers, for example patterns of glacier thinning which may occur at similar rates to clean glaciers (Gardelle et al., 2012a; Kääb et al., 2012).

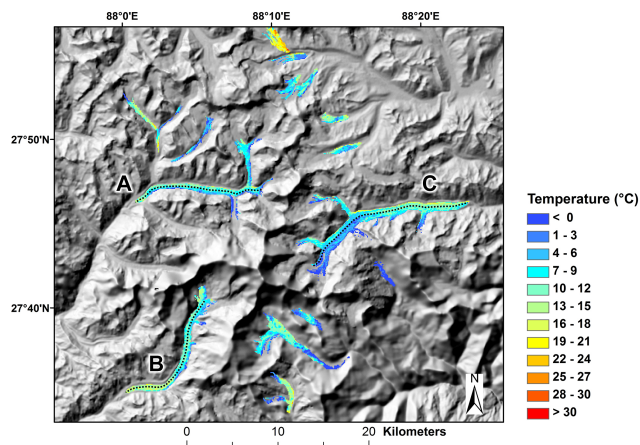


### 5.3 Topographic and climatic controls on area changes

While the consistent area change patterns across the subregions (east to west) are useful for comparison with larger areas, these patterns cannot be used to understand glacier-by-glacier variability in area changes, which may be controlled by local topography and climate. In this study, we found that topographic factors, notably glacier size, glacier altitude (maximum, median, altitudinal range) and aspect, were most important in determining rates of glacier area loss in spatial domain 1. Glacier size plays a significant role in determining area change, i.e., smaller glaciers experienced higher rates of area loss (Table 7). The tendency of larger glaciers to lose less area ( $> 20 \text{ km}^2$ ) was observed in various studies (Racoviteanu et al., 2008a; Salerno et al., 2008; Loibl et al., 2014), though in the case of Salerno et al. (2008) the correlation was not statistically significant for the Khumbu. Higher glacier elevations and larger altitudinal ranges significantly reduce the rates of area loss, as was also noted in the Khumbu region in Nepal and elsewhere. The dependency of area change on glacier size and elevation is also consistent with observations from the Cordillera Blanca of Peru (Racoviteanu et al., 2008a) in the outer tropics, indicating consistent patterns in glacier area changes worldwide.

Glacier slope also plays a significant role in determining glacier area change, i.e., the steeper the glacier, the larger the area loss observed in our study. The same tendency was observed in the Khumbu area (Salerno et al., 2008), but the correlation is less significant than the glacier altitude ( $p < 0.05$ ). The presence of gentle slopes covered with supraglacial debris in the ablation areas of glaciers, fairly common in this area, may have reduced the strength of the correlation. Glacier aspect was also found to be a significant control on area change, with more area loss for glaciers oriented southwards and southwest ( $p < 0.01$ ). This is in agreement with findings from Salerno et al. (2008) for the Khumbu region but is in contrast with results from Loibl et al. (2014) for the Nyainqêntanglha Range in southeastern Tibet, about 600 km east of our study area, who found that south-facing glaciers experienced lower rates of terminus retreat. Percent debris cover was a negative control on area change, i.e., glaciers with more extensive debris cover on their areas tend to lose less area overall, but this was not statistically significant ( $p > 0.05$ ). Debris-covered glaciers may benefit from the insulating effect of debris cover above a certain “critical” debris thickness (Mihalcea et al., 2008a; Zhang et al., 2011), which needs to be further investigated.

Geographic location (latitude and longitude) were negative controls on glacier area change, suggesting that glaciers located north and eastwards of the study area tend to lose more area, but only latitude was statistically significant ( $p < 0.05$ ). Climate indices (precipitation and solar radiation) were not significant factors controlling glacier area loss. In contrast, Loibl et al. (2014) showed that glaciers located in a monsoon-influenced area were more sensitive to cli-



**Figure 8.** Daytime surface temperatures on several debris-covered tongues, extracted from ASTER data from the 29 October 2002 image. Labels point to: A – Kanchenjunga glacier, B – Yalung glacier and C – Zemu glacier.

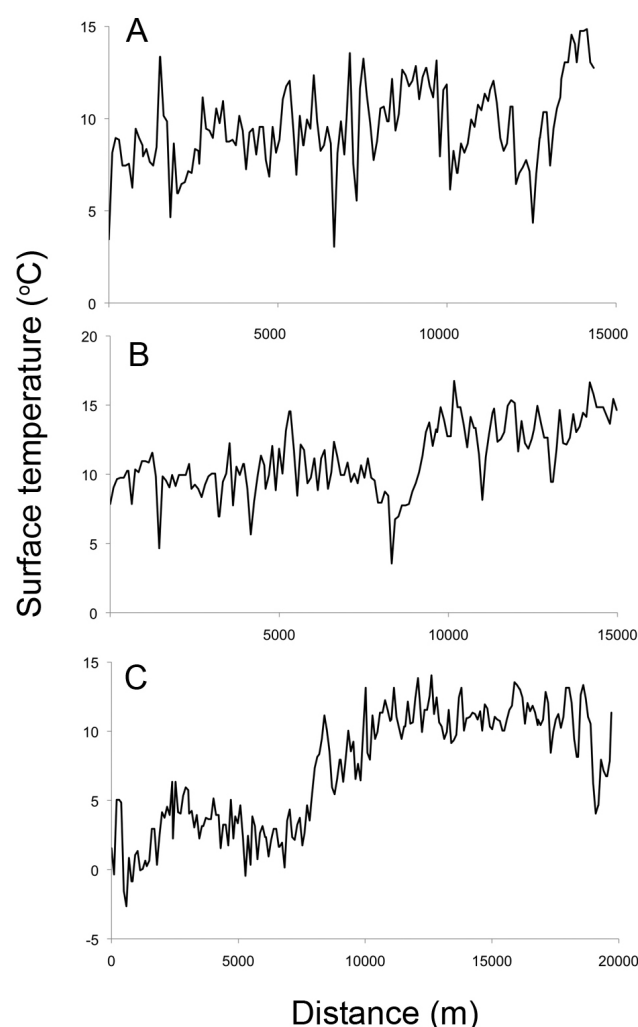
mate change. This is in agreement with larger-scale studies (Gardelle et al., 2013) that indicated a tendency for enhanced glacier wastage in the eastern, monsoon-influenced parts of the Himalaya. With respect to climatic factors in this area, Basnett et al. (2013) reported an increase in mean annual temperature, more significantly in the winter ( $+2^\circ\text{C yr}^{-1}$  in the last four decades). Increasing temperatures on the south slopes of the Himalayas were also noted in other studies (Shrestha et al., 2000; Thakuri et al., 2014) based on instrumental data but were estimated to have less effect on glacier area than changes in precipitation because of the orientation of these glaciers towards the prevailing monsoon circulation. In our study, the climatic control on glacier area is not conclusive, and finer-resolution, more accurate temperature and precipitation data sets would be needed. Furthermore, similarly to areas further east (Loibl et al., 2014), average annual solar radiation and latitude were not found to be significant controls on glacier area change in our study.

### 5.4 Surface temperature distribution on debris-covered tongues

Lower rates of area change for the debris-covered glaciers may be further explained by surface characteristics of debris cover (thickness, thermal conductivity and resistance). However, these are not easily available in this area due to the lack of field-based measurements and the difficulty of conducting surveys on the debris-covered tongues. Therefore, in this study, we are only qualitatively showing the distribution of surface temperature on selected debris-covered tongues in spatial domain 3 based on the 2002 ASTER scene. Figure 8 shows a high variability in supraglacial surface temperature at 90 m spatial resolution, but there is no clear general temperature trend for the eastern slopes (Sikkim side) versus the western slopes (Nepal) side. The fluctuations in surface tem-

peratures along transects are clearly visible in Fig. 9, with some sharp spikes of high and low temperatures, particularly for Kanchenjunga and Yalung glaciers (labeled “A” and “B” in Fig. 8). This strong variability in supraglacial debris temperatures may be due to the presence of surface features such as debris thickness, size of the debris particles and thermal resistance and conductivity of the debris. For the debris-covered tongues investigated here, the supraglacial temperatures range from 0 to 30 °C, suggesting that the supraglacial debris heats up considerably during the day. At the glacier scale, temperature drops over supraglacial features such as ice walls and supraglacial lakes, which tend to be colder than the surrounding debris, and this is visible even at the coarse spatial resolution of the temperature data (90 m). In Fig. 9 we note the slight upward trend of the supraglacial temperature towards the glacier termini, particularly for Zemu glacier (“C” in Fig. 8). For this glacier, the upper-middle part of the debris surface is colder (−3 to 5 °C) than the last 10 km towards the glacier terminus (5 to 14 °C) (Fig. 9). In a different paper (Racoviteanu and Williams, 2012), we found similar patterns of surface temperature increasing towards the glacier terminus for the same glacier but based on a different ASTER scene (November 2001), indicating consistent patterns for this glacier. The higher surface temperatures towards the glacier terminus may indicate a thicker debris cover that insulates the ice underneath, noted in other studies (Mihalcea et al., 2008a). The daytime debris temperature ranges and strong spatial variability noted here are similar to the ones we found for Khumbu, west of this study area (−3 to 17 °C) (Racoviteanu et al., 2013b). In Khumbu, we found that supraglacial debris had a distinct temperature signal compared to other surfaces such as non-ice moraine, clean ice and supraglacial/proglacial lakes, with more pronounced differences among these three during the daytime.

The suitability of ASTER-based surface for inferring debris characteristics, most notably thickness, has been demonstrated in other studies (Mihalcea et al., 2008a; Zhang et al., 2011). For this study area, there were no field measurements available to test the validity of ASTER temperatures for quantifying supraglacial debris characteristics. However, in a different study (Racoviteanu et al., 2013b), we validated ASTER-based surface temperatures extracted from nine night scenes from 2010 to 2011 for the Khumbu by inverting field-based long-wave radiation ( $L_{\text{out}}$ ) using the Stefan–Boltzmann law ( $L_{\text{out}} = \varepsilon T^4$ ). The measurements were from the automatic weather station installed on Changri Nup glacier (Wagon et al., 2013). We found a good agreement between ASTER temperatures and field-based measurements ( $R^2 = 0.92$ ) using a sensitivity analysis ( $\varepsilon = 0.97 \pm 0.1$ ) to account for small-scale variability in emissivity. Given that the Kanchenjunga–Sikkim area has similar characteristics to Khumbu in terms of debris cover and geographic location and that the images were acquired around the same time of the year as the Khumbu (November–January), we consider

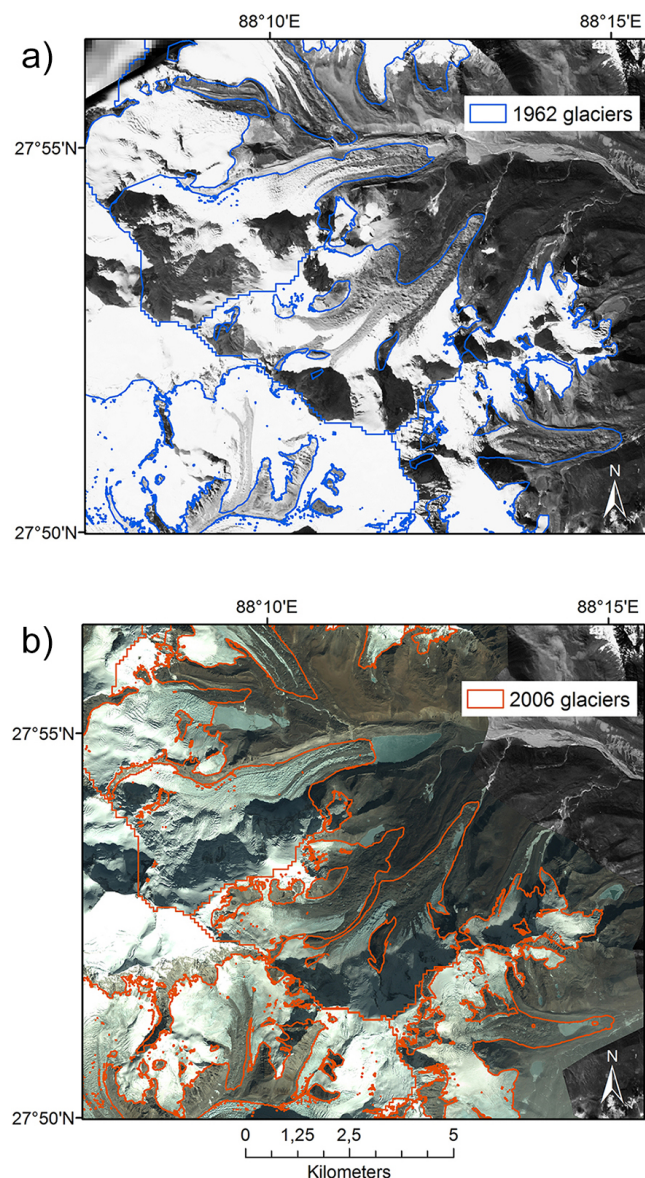


**Figure 9.** Surface temperature distribution along longitudinal transects from selected glaciers (shown in Fig. 8): A is Kanchenjunga glacier, B is Yalung glacier and C is Zemu glacier. Distance on the  $x$  axis is measured from the upper part of the debris-covered area down glacier to the terminus.

that this validation may be applicable to the present study area.

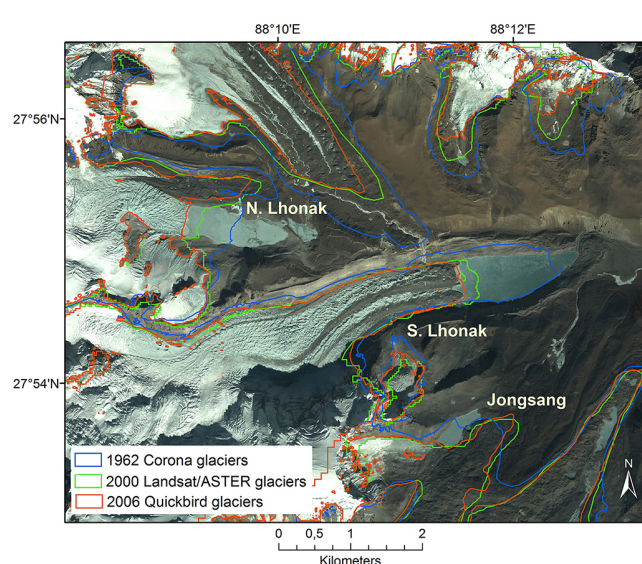
### 5.5 The role of glacier lakes

The role of supraglacial/proglacial lakes for glacier area change in this area of the Himalaya was addressed in detail in recent studies (Basnett et al., 2013; Bajracharya et al., 2014). Gardelle et al. (2011) also pointed out the increased formation of supraglacial lakes particularly in the eastern part of the Himalaya. A quantitative assessment of lake formation is beyond the scope of this paper; here we only illustrate qualitatively some of the changes occurring on glaciers with supraglacial or proglacial lakes using high-resolution Corona and QuickBird imagery. For the Teesta basin in Sikkim, Mool



**Figure 10.** Area changes for some glaciers in the Zema Chhu basin Sikkim from 1962 to 2006: (a) 1962 Corona-based glacier outlines (in blue) and (b) 2006 QB glacier outlines (in orange).

and Bajracharya (2003) inventoried 266 glacier lakes covering a total area of 20 km<sup>2</sup> (3.5 % of the glacierized area) based on 2000 Landsat ETM+ imagery. For spatial domain 3, we estimated that glacier lakes covered 1.3 % of the total debris-covered glacier area, or 5.8 % of the area if we consider only the debris-cover (ablation) part, based on the QB/WV2 imagery. Salerno et al. (2012) reported similar percentage for the area of supraglacial lakes, i.e., 0.3–2 % of the overall glacierized area for the Khumbu region. While supraglacial lakes do not cover extensive areas of the glacierized surface, they were shown to increase surface ablation rates in this part of the Himalaya (Fujita and Sakai, 2014;



**Figure 11.** Close-up view of glacier area changes around the North and South Lhonak glaciers from 1962 to 2006, showing changes in the pro-glacial lakes.

Sakai et al., 2002). It was also shown that supraglacial lakes located at the glacier terminus tend to merge to create large, fast-growing proglacial lakes that accelerate glacier area loss (Basnett et al., 2013; Bajracharya et al., 2014).

Some of the proglacial lakes in our study area are visible in Figs. 10 and 11 for the northern part of spatial domain 3 (Changsang, east Langpo, Jongsang, middle Lhonak, south Lhonak). Most of these lakes are moraine-dammed lakes considered dangerous for potentially inducing glacier lake outburst flood events and were shown to accelerate the glacier area loss in recent decades (Bajracharya et al., 2014). Figure 10a–b show the evolution of the proglacial lake on North and South Lhonak glaciers in Sikkim, also noted in Basnett et al. (2013). A closer look at a subset area (Fig. 11) shows the visible growth of a proglacial lake for the adjacent North Lhonak and South Lhonak glaciers. We estimate that these two glaciers retreated  $\sim 650$  m and 1.3 km from 1962 to 2006, respectively. Another branch of the North Lhonak glacier has wasted significantly by  $\sim 1.5$  km from 1962 to 2006, and a glacier outlet is now clearly visible. The northern branch of Jongsang glacier was entirely covered by a supraglacial lake in 2006, while another part shows less significant rates of terminus retreat ( $\sim 100$  m in 44 years). A part of the Jongsang glacier shows a slight “false” glacier tongue advance, most likely due to uncertainties in the mapping of Corona imagery. While our purpose here is not to present glacier length changes, we note that these estimates are in agreement with trends of glacier thinning and increased glacier lake formation reported in this area of the Himalaya previously (Gardelle et al., 2011; Basnett et al., 2013; Kääb et al., 2012).



## 5.6 Uncertainty and limitations

Inconsistencies in glacier area change estimates have been pointed out in other studies, for the Himalaya and elsewhere (Racoviteanu et al., 2008a, b), and are also noted in the current study. Glacier area changes in the Himalaya are heterogeneous and depend on a variety of factors including local topography and climate, so some caution should be applied when comparing rates of area changes from one area to other areas, even in the same climatic zone. For example, for Sikkim we estimated a surface area loss of  $88.9 \pm 5 \text{ km}^2$  (13.5 % from 1962 to 2006, or  $0.36 \pm 0.17 \text{ yr}^{-1}$ ). Other studies in this area point to contrasting results. For the same geographic area, Basnett et al. (2013) reported an area loss of  $0.16 \pm 0.10 \text{ yr}^{-1}$  from 1989/1990 to 2009/2010, which is about half of the area change in our findings. In contrast, a recent study (Bahuguna et al., 2014) reported the highest rates of area loss (about  $0.8 \text{ yr}^{-1}$ ) for the last decade, even higher than rates reported previously for the western Himalaya by Kulkarni et al. (2007). We speculate that such large differences might be due to errors inherent in the baseline data sets coupled with misclassification due to snow cover or debris-covered areas.

Glacier area changes reported for Sikkim in different studies, using a variety of data including topographic maps (Table 9), illustrate this point. For example, for Sikkim, our study estimated  $569 \pm 70 \text{ km}^2$  of glacierized area in 2000 based on Landsat/ASTER data. For the same time period, Mool et al. (2002) reported an area of  $577 \text{ km}^2$  based on the same source imagery (Landsat ETM+) (Table 9). These two area estimates differ only by  $8.2 \text{ km}^2$  (1.4 %) of our estimated area and only the number of glacier differs substantially (186 glaciers in our study compared to 285 glaciers in ICIMOD study) most likely due to the way in which ice masses were split and how glaciers were counted. Methodology differences and inconsistencies in glacier estimates are quite common in multi-temporal image analysis performed by different analysts and were previously noted in other areas of the world (Racoviteanu et al., 2009). Similarly, for the 1962 decade, our analysis of Corona 1962 imagery for Sikkim yielded 178 glaciers with an area of  $658 \pm 20 \text{ km}^2$ . In a recent publication (Racoviteanu et al., 2014), we reported 158 glaciers with an area of  $742 \text{ km}^2$  for the 1960s based on the Swiss topographic map. The GSI (Sangewar and Shukla, 2009) reported 449 glaciers with an area of  $706 \text{ km}^2$  for the 1970s based on topographic maps. Our 1962 Corona glacier inventory yields a smaller total glacier area than the one based on the topographic map ( $84 \text{ km}^2$ , or 11 %) (Racoviteanu et al., 2014) or the GSI inventory based on topographic maps ( $48.3 \text{ km}^2$ , or 7 % area) (Sangewar and Shukla, 2009). We consider that both of these latter mentioned studies overestimated the glacier area in the 1960s, perhaps due to the presence of persistent snow in the source aerial imagery. We consider the Corona 1962 data set to be more reliable than the inventories based on topographic

maps, and hence we used this data set as baseline for comparison with the recent imagery.

Glacier inventories in Sikkim for the recent decades also point to contradictory patterns. For the 1980s, another study (Kulkarni, 1992) reported a glacierized area of  $431 \text{ km}^2$  for 1987/1989 based on Indian IRS-1A and Landsat data. Considering our 1962 Corona inventory, this would imply an area loss of 42 % since 1962 ( $2.1 \text{ yr}^{-1}$ ) followed by a strong increase in glacier area ( $+33.5 \text{ %}$ , or  $+3 \text{ yr}^{-1}$ ) from 1987/1988 to 2000 (based on our Landsat analysis), which is undocumented and unlikely in this area. We consider the 1987/1989 estimates to be highly unreliable, given that there are no glacier surges that might induce an apparent “glacier growth”. In some areas, we noted omissions of some debris-covered tongues from the glacier maps, which might explain some of the differences.

## 6 Summary and outlook

In this study we combined remote sensing data from various sensors to construct a new glacier inventory for the Kanchenjunga–Sikkim region in the eastern Himalaya. Based on 1962 Corona and 2006 QuickBird imagery, we found an overall negative glacier surface area loss of  $0.5 \pm 0.2 \text{ yr}^{-1}$  since 1962, in agreement with those noted in other studies in the Himalaya. The area loss rates reported here are lower than the average rate of  $0.7 \text{ yr}^{-1}$  reported in other glacierized areas of the world such as the Alps (Kääb et al., 2002), the Tien Shan (Bolch, 2007) and the Peruvian Andes (Racoviteanu et al., 2008a). Glaciers exhibit heterogeneous patterns of area change depending on topographic and climatic factors, most notably glacier altitude (maximum, median, altitudinal range), glacier size, slope and aspect. Glacier area changes depend strongly on glacier size and elevation, which is consistent with other areas in the central/eastern Himalaya (Thakuri et al., 2014) or elsewhere, for example in the outer tropics (Racoviteanu et al., 2008a). The conclusions drawn with respect to spatial patterns in glacier characteristics, glacier area loss and their topographic and climatic dependency are as follows:

- strong north–south gradient in terms of glacier elevations and debris cover, with larger percent of area covered by debris and higher glacier elevations on the northern side for the divide but less east–west gradient in these characteristics;
- supraglacial debris cover is prevalent on the southern slopes of the Himalaya (14 % of the glacierized area) compared to northern slopes (2 %);
- supraglacial lakes constitute about 6 % of the debris-covered area, and some of these supraglacial lakes have merged to form proglacial lakes;



**Table 9.** Glacier area change in Sikkim based on previous studies. The percent area change is given with respect to the 1962 Corona glacier inventory from this study.

Study	Year	Data source	Number of glaciers	Area (km <sup>2</sup> )	Area change since 1960s	
					%	% yr <sup>-1</sup>
This study	1962	Corona KH4	178	658 ± 20	–	–
Geological Survey of India (1999)	~ 1960–1970s	Indian 1 : 63 000 topographic maps	449	706	+7.3	+0.9
Kulkarni and Narain (1990)	1987/1989	IRS-1C satellite images	n/a	426	–35.0	–1.4
ICIMOD Mool et al. (2002)	2000	Landsat TM, IRS-1C, topographic maps	285	577	–11.4	–0.3
This study	2000	Landsat TM, ASTER	185	569 ± 34	–13.5 ± 6.4	–0.3 ± 0.1

- glacier area loss of  $0.5 \% \pm 0.2 \% \text{ yr}^{-1}$  from 1962 to 2000, with some differences on the eastern side of the divide (Sikkim,  $0.52 \% \pm 0.2 \% \text{ yr}^{-1}$ ) versus the western part (Nepal,  $0.44 \% \pm 0.2 \% \text{ yr}^{-1}$ );
- higher rates of area loss for clean glaciers (34 %, or  $0.7 \% \text{ yr}^{-1}$ ) compared to debris-covered glaciers (14.3 % or  $0.3 \% \text{ yr}^{-1}$ ) across the subregions on a glacier-by-glacier basis;
- the amount of glacier area loss is partly controlled by a glacier's headwater elevation, altitudinal range, glacier area, slope and aspect, with the largest area loss observed for small, steep glaciers with a smaller altitudinal range and less debris cover;
- while Himalayan glaciers are undoubtedly undergoing negative area change, the rates of area loss noted in this study ( $0.5 \% \text{ yr}^{-1}$ ) as well as other recent studies in the area ( $0.2\text{--}0.4 \% \text{ yr}^{-1}$  since the 1960s) are lower than other glacierized areas worldwide ( $0.7 \% \text{ yr}^{-1}$ ).

The glacier area change estimates reported here are subject to uncertainties most notably with respect to early topographic maps and declassified Corona imagery; therefore a considerable effort was given to minimizing errors by multiple re-iterations of the glacier outlines. The understanding of the spatial patterns of glacier changes in the current study is limited by (1) a lack of a baseline elevation data set for the 1960 to compute glacier elevation changes from 1960s to 2000 and (2) lack of field-based measurements to validate debris-cover mapping and surface temperature distribution. With respect to the latter, while surface temperature trends show a slight increase towards the terminus, suggesting a thicker debris cover, the supraglacial surface temperatures are highly heterogenous and require additional investigation. A further improvement in the current study will be to include the supraglacial and proglacial lakes and surface temperature as determinant factors for the glacier area change, per-

haps in a more sophisticated multivariate regression model. The glacier data sets constructed in this study can be further utilized to understand the behavior of glaciers in this little-investigated area of the Himalaya, particularly with respect to spatial patterns of glacier melt, and the contribution of glaciers to water resources.

**Acknowledgements.** This research was funded by a NASA Earth System Sciences (ESS) fellowship (NNX06AF66H), a National Science Foundation doctoral dissertation improvement grant (NSF DDRI award BC 0728075), a CIRES research fellowship, a graduate fellowship from CU-Boulder and a post-doc fellowship from Centre national d'études spatiales (CNES), France. Participation of M. Williams was supported by the NSF-funded Niwot Ridge Long-Term Ecological Research (LTER) program and the USAID Cooperative Agreement AID-OAA-A-11-00045. ASTER imagery was obtained through the NASA-funded Global Land Ice Measurements from Space (GLIMS) project. We are grateful to Jonathan Taylor at University of California, Fullerton, for facilitating access to high-resolution imagery through the NASA Appropriations grant no. NNA07CN68G. We thank Damodar Lam-sal and an anonymous reviewer for their thorough comments, which helped improve the quality of the manuscript.

Edited by: T. Bolch

## References

- Ageta, Y. and Higuchi, K.: Estimation of Mass Balance Components of a Summer-Accumulation Type Glacier in the Nepal Himalaya, *Geogr. Ann.* A, 66, 249–255, 1984.
- Andermann, C., Bonnet, S., and Gloaguen, R.: Evaluation of precipitation data sets along the Himalayan front, *Geochem. Geophys. Geos.*, 12, Q07023, doi:10.1029/2011gc003513, 2011.
- Andreassen, L. M., Paul, F., Kääb, A., and Hausberg, J. E.: Landsat-derived glacier inventory for Jotunheimen, Norway, and deduced glacier changes since the 1930s, *The Cryosphere*, 2, 131–145, doi:10.5194/tc-2-131-2008, 2008.

- Bahuguna, I. M., Rathore, B. P., Brahmabhatt, R., Sharma, M., Dhar, S., Randhawa, S. S., Kumar, K., Romshoo, S., Shah, R. D., and Ganjoo, R. K.: Are the Himalayan glaciers retreating?, *Curr. Sci.*, 106, 1008–1013, 2014.
- Bajracharya, S. R. and Shrestha, B.: The status of glaciers in the Hindu-Kush Himalayan Region, International Centre for Integrated Mountain Development (ICIMOD), Kathmandu, Nepal, 127 pp., 2011.
- Bajracharya, S. R., Mool, P. K., and Shrestha, A.: Impact of climate change on Himalayan glaciers and glacial lakes, ICIMOD, Kathmandu, Nepal, 2007.
- Bajracharya, S. R., Maharjan, S. B., and Shrestha, F.: The status and decadal change of glaciers in Bhutan from 1980's to 2010 based on the satellite data, *Ann. Glaciol.*, 55, 159–166, doi:10.3189/2014AoG66A125, 2014.
- Basnett, S., Kulkarni, A., and Bolch, T.: The influence of debris cover and glacial lakes on the recession of glaciers in Sikkim Himalaya, India, *J. Glaciol.*, 59, 1035–1046, 2013.
- Benn, D. and Owen, L. A.: The role of the Indian summer monsoon and the mid-latitude westerlies in Himalayan glaciation: review and speculative discussion, *J. Geol. Soc.*, 155, 353–363, 1998.
- Benn, D. and Owen, L. A.: Equilibrium-line altitudes of the Last Glacial Maximum for the Himalaya and Tibet: an assessment and evaluation of results, *Quat. Int.*, 138–139, 55–58, 2005.
- Berthier, E., Arnaud, Y., Vincent, C., and Remy, F.: Biases of SRTM in high-mountain areas: Implications for the monitoring of glacier volume changes, *Geophys. Res. Lett.*, 33, L08502, doi:10.1029/2006GL025862, 2006.
- Berthier, E., Arnaud, Y., Kumar, R., Ahmad, S., Wagnon, P., and Chevallier, P.: Remote sensing estimates of glacier mass balances in the Himachal Pradesh (Western Himalaya, India), *Remote Sens. Environ.*, 108, 327–338, 2007.
- Bhambri, R. and Bolch, T.: Glacier mapping: a review with special reference to the Indian Himalayas, *Programm. Phys. Geogr.*, 33, 672–702, 2009.
- Bhambri, R., Bolch, T., Chaujar, R. K., and Kulshreshtha, S. C.: Glacier changes in the Garhwal Himalayas, India during the last 40 years based on remote sensing data., *J. Glaciol.*, 54, 543–556, 2010.
- Bhambri, R., Bolch, T., Chaujar, R. K., and Kulshreshtha, S. C.: Glacier changes in the Garhwal Himalaya, India, from 1968 to 2006 based on remote sensing, *J. Glaciol.*, 57, 543–556, 2011.
- Bhatt, B. C. and Nakamura, K.: Characteristics of Monsoon rainfall around the Himalayas revealed by TRMM precipitation radar, *Mon. Weather Rev.*, 133, 149–165, doi:10.1175/MWR-2846.1, 2005.
- Bolch, T.: Climate change and glacier retreat in northern Tien Shan (Kazakhstan/Kyrgyzstan) using remote sensing data, *Global Planet. Change*, 56, 1–12, 2007.
- Bolch, T., Buchroithner, M. F., Pieczonka, T., and Kunert, A.: Planimetric and Volumetric Glacier Changes in the Khumbu Himalaya since 1962 Using Corona, Landsat TM and ASTER Data, *J. Glaciol.*, 54, 592–600, 2008a.
- Bolch, T., Buchroithner, M. F., Peters, J., Baessler, M., and Bajracharya, S.: Identification of glacier motion and potentially dangerous glacial lakes in the Mt. Everest region/Nepal using spaceborne imagery, *Nat. Hazards Earth Syst. Sci.*, 8, 1329–1340, doi:10.5194/nhess-8-1329-2008, 2008b.
- Bolch, T., Menounos, B., and Wheate, R.: Landsat-based inventory of glaciers in western Canada, 1985–2005, *Remote Sens. Environ.*, 114, 127–137, 2010.
- Bolch, T., Pieczonka, T., and Benn, D. I.: Multi-decadal mass loss of glaciers in the Everest area (Nepal Himalaya) derived from stereo imagery, *The Cryosphere*, 5, 349–358, doi:10.5194/tc-5-349-2011, 2011.
- Bolch, T., Kulkarni, A., Kääb, A., Huggel, C., Paul, F., Cogley, J. G., Frey, H., Kargel, J. S., Fujita, K., Scheel, M., Bajracharya, S., and Stoffel, M.: The State and Fate of Himalayan Glaciers, *Science*, 336, 310–314, doi:10.1126/science.1215828, 2012.
- Bookhagen, B. and Burbank, D. W.: Topography, relief and TRMM-derived rainfall variations along the Himalaya, *Geophys. Res. Lett.*, 33, L08405, doi:10.1029/2006gl026037, 2006.
- Burrough, P. A. and McDonnell, R. A.: Principles of Geographic Information Systems, Oxford University Press, Oxford, UK, 1998.
- CGIAR-CSI: Void-filled seamless SRTM data V1, available at: <http://srtm.csi.cgiar.org/http://www.ambiotek.com/topoview> (last access: 1 April 2014), 2004.
- Clift, P. D. and Plumb, R. A.: The Asian Monsoon: Causes, History and Effects, Cambridge University Press, New York, USA, 88 pp., 2008.
- Congalton, R. G.: A review of assessing the accuracy of classifications of remotely sensed data, *Remote Sens. Environ.*, 37, 35–46, 1991.
- Dashora, A., Lohani, B., and Malik, J. N.: A repository of Earth resource information-CORONA satellite programme, *Current Science*, 92, 926–932, 2007.
- Dozier, J.: Spectral Signature of Alpine Snow Cover from the Landsat Thematic Mapper, *Remote Sens. Environ.*, 28, 9–22, 1989.
- Farinotti, D., Huss, M., Bauder, A., and Funk, M.: An estimate of the glacier ice volume in the Swiss Alps, *Glob. Planet. Change*, 68, 225–231, 2009.
- Foster, L. A., Brock, B. W., Cutler, M. E. J., and Diotri, F.: A physically based method for estimating supraglacial debris thickness from thermal band remote-sensing data, *J. Glaciol.*, 58, 677–690, 2012.
- Frey, H., Paul, F., and Strozzi, T.: Compilation of a glacier inventory for the western Himalayas from satellite data: methods, challenges, and results, *Remote Sens. Environ.*, 124, 832–843, doi:10.1016/j.rse.2012.06.020, 2012.
- Fujii, Y. and Higuchi, K.: Statistical analyses of the forms of the glaciers in Khumbu Himal, Japanese Society of Snow and Ice, 39, 7–14, 1977.
- Fujita, K. and Sakai, A.: Modelling runoff from a Himalayan debris-covered glacier, *Hydrol. Earth Syst. Sci.*, 18, 2679–2694, doi:10.5194/hess-18-2679-2014, 2014.
- Fujita, K., Suzuki, R., Nuimura, T., and Sakai, A.: Performance of ASTER and SRTM DEMs, and their potential for assessing glacial lakes in the Lunana region, Bhutan Himalaya, *J. Glaciol.*, 54, 220–228, 2008.
- Gardelle, J., Arnaud, Y., and Berthier, E.: Contrasted evolution of glacial lakes along the Hindu Kush Himalaya mountain range between 1990 and 2009, *Glob. Planet. Change*, 75, 47–55, doi:10.1016/j.gloplacha.2010.10.003, 2011.
- Gardelle, J., Berthier, E., and Arnaud, Y.: Slight mass gain of Karakoram glaciers in the early twenty-first century, *Nat. Geosci.*, 5, 322–325, 2012a.

- Gardelle, J., Berthier, E., and Arnaud, Y.: Impact of resolution and radar penetration on glacier elevation change computed from DEM differencing, *J. Glaciol.*, 58, 419–422, 2012b.
- Gardelle, J., Berthier, E., Arnaud, Y., and Kääb, A.: Region-wide glacier mass balances over the Pamir-Karakoram-Himalaya during 1999–2011, *The Cryosphere*, 7, 1263–1286, doi:10.5194/tc-7-1263-2013, 2013.
- Hall, D. K., G. Riggs, G. A., and Salomonson, V. V.: Development of methods for mapping global snow cover using moderate resolution imaging spectroradiometer data, *Remote Sens. Environ.*, 54, 127–140, 1995.
- Huss, M. and Farinotti, D.: Distributed ice thickness and volume of all glaciers around the globe, *J. Geophys. Res.*, 117, F04010, doi:10.1029/2012JF002523, 2012.
- IMD: Climatological tables 1951–1980, Government of India, New Delhi, India, 1980.
- Immerzeel, W., van Beek, L. P. H., and Bierkens, M. F. P.: Climate Change Will Affect the Asian Water Towers, *Science*, 328, 1382–1385, doi:10.1126/science.1183188, 2010.
- Immerzeel, W. W., Beek, L. P. H. v., Konz, M., Shrestha, A. B., and Bierkens, M. F. P.: Hydrological response to climate change in a glacierized catchment in the Himalayas, *Clim. Change*, 110, 721–736, 2012.
- Iwata, S., Aoki, T., Kadota, T., Seko, K., and Yamaguchi, S.: Morphological evolution of the debris cover on Khumbu Glacier, Nepal, between 1978 and 1995, in: *Debris-covered glaciers*, edited by: Nakawo, M., Raymond, C. F., and Fountain, A., IAHS, 264, 3–11, 2000.
- Kääb, A., Paul, F., Maisch, M., Hoelzle, M., and Haeberli, W.: The new remote-sensing-derived Swiss glacier inventory: II. First results, *Ann. Glaciol.*, 34, 362–366, 2002.
- Kääb, A., Berthier, E., Nuth, C., Gardelle, J., and Arnaud, Y.: Contrasting patterns of early twenty-first-century glacier mass change in the Himalayas, *Nature*, 488, 495–498, 2012.
- Kamp, U., Byrne, M., and Bolch, T.: Glacier fluctuations between 1975 and 2008 in the Greater Himalaya Range of Zaskar, southern Ladakh, *J. Mt. Sci.*, 8, 374–389, 2011.
- Karma, Ageta, Y., Naito, N., Iwata, S., and Yabuki, H.: Glacier distribution in the Himalayas and glacier shrinkage from 1963 to 1993 in the Bhutan Himalayas, *B. Glaciol. Res.*, 20, 29–40, 2003.
- Kaser, G., Grosshauser, M., and Marzeion, B.: Contribution potential of glaciers to water availability in different climate regimes, *Proc. Natl. Acad. Sci. USA*, 107, 20223–20227, doi:10.1073/Pnas.1008162107, 2010.
- Kayastha, R. B., Takeuchi, Y., Nakawo, M., and Ageta, Y.: Practical prediction of ice melting beneath various thickness of debris cover on Khumbu Glacier, Nepal, using a positive degree-day factor, in: *Debris-Covered Glaciers*, edited by: Raymond, C. F., Nakawo, M., and Fountain, A., IAHS, Wallingford, UK, 71–81, 2000.
- Krishna, A. P.: Snow and glacier cover assessment in the high mountains of Sikkim Himalaya, *Hydrol. Process.*, 19, 2375–2383, 2005.
- Kulkarni, A. V.: Glacier inventory in the Himalaya, *Natural resources management – a new perspective*, NNRMS, Bangalore, 474–478, 1992.
- Kulkarni, A. and Narain, A.: Remote sensing based glacier inventory in the Sikkim state, *Scientific note no. SAC/RSA/RSAG-MWRD/ SN/01/90*, 11, 1990.
- Kulkarni, A. V., Bahuguna, I. M., Rathore, B. P., Singh, S. K., Randhawa, S. S., Sood, R. K., and Dhar, S.: Glacial retreat in Himalaya using Indian Remote Sensing satellite data, *Current Science*, 92, 69–74, 2007.
- Loibl, D. M., Lehmkuhl, F., and Griesinger, J.: Reconstructing glacier retreat since the Little Ice Age in SE Tibet by glacier mapping and equilibrium line altitude calculation, *Geomorphology*, 214, 22–39, doi:10.1016/j.geomorph.2014.03.018, 2014.
- Manley, W. F.: Geospatial inventory and analysis of glaciers: A case study for the eastern Alaska Range, in: *Glaciers of Alaska*, in: *Satellite Image Atlas of Glaciers of the World: USGS Professional Paper 1386-K*, edited by: Williams, R. S. Jr. and Ferrigno, J. G., US Geological Survey, Books Express Publishing, K424 K439, 2008.
- Mason, L. E.: *Abode of Snow: A History of Himalayan Exploration and Mountaineering*, Dutton, New York City, USA, 372 pp., 1954.
- Mihalcea, C., Mayer, C., Diolaiuti, G., D'Agata, C., Smiraglia, C., Lambrecht, A., Vuillermoz, E., and Tartari, G.: Spatial distribution of debris thickness and melting from remote-sensing and meteorological data, at debris-covered Baltoro glacier, Karakoram, Pakistan, *Ann. Glaciol.*, 48, 49–57, 2008a.
- Mihalcea, C. E., Brock, B. W., Diolaiuti, G. A., D'Agata, C., Citterio, M., Kirkbride, M. P., Cutler, M., and Smiraglia, C.: Using ASTER satellite and ground-based surface temperature measurements to derive supraglacial debris cover and thickness patterns on Miage Glacier (Mont Blanc Massif, Italy), *Cold Reg. Sci. Technol.*, 52, 341–354, doi:10.1016/j.coldregions.2007.03.004, 2008b.
- Mool, P. K. and Bajracharya, S. R.: Tista Basin, Sikkim Himalaya: Inventory of Glaciers and Glacial Lakes and the Identification of Potential Glacial Lake Outburst Floods (GLOFs) Affected by Global Warming in the Mountains of Himalayan Region, *International Center for Integrated Mountain Development, Kathmandu, Nepal*, 145 pp., 2003.
- Mool, P. K., Bajracharya, S. R., Joshi, S. P., Sakya, K., and Baidya, A.: *Inventory of Glaciers, Glacial Lakes and Glacial Lake Outburst Floods Monitoring and Early Warning Systems in the Hindu-Kush Himalayan region, Nepal*, International Center for Integrated Mountain Development, Nepal, 2002.
- Narama, C., Kääb, A., Duishonakunov, M., and Abdrakhmatov, K.: Spatial variability of recent glacier area and volume changes in Central Asia using Corona (~ 1970), Landsat (~ 2000), and ALOS (~ 2007) optical satellite data, *Glob. Planet. Change*, 71, 42–54, doi:10.1016/j.gloplacha.2009.08.002, 2010.
- Nuimura, T., Fujita, K., Yamaguchi, S., and Sharma, R. R.: Elevation changes of glaciers revealed by multitemporal digital elevation models calibrated by GPS survey in the Khumbu region, Nepal Himalaya, *J. Glaciol.*, 58, 648–656, 2012.
- Nuimura, T., Sakai, A., Taniguchi, K., Nagai, H., Lamsal, D., Tsutaki, S., Kozawa, A., Hoshina, Y., Takenaka, S., Omiya, S., Tsunematsu, K., Tshering, P., and Fujita, K.: The GAMDAM Glacier Inventory: a quality controlled inventory of Asian glaciers, *The Cryosphere Discuss.*, 8, 2799–2829, doi:10.5194/tcd-8-2799-2014, 2014.
- Nuth, C. and Kääb, A.: Co-registration and bias corrections of satellite elevation data sets for quantifying glacier thickness change, *The Cryosphere*, 5, 271–290, doi:10.5194/tc-5-271-2011, 2011.

- Palazzi, E., von Hardenberg, J., and Provenzale, A.: Precipitation in the Hindu-Kush Karakoram Himalaya: Observations and future scenarios, *J. Geophys. Res.-Atmos.*, 118, 85–100, doi:10.1029/2012JD018697, 2013.
- Paterson, W. S. B.: *The Physics of Glaciers*, 3rd ed., Pergamon, Oxford, UK, 480 pp., 1994.
- Paul, F., Barrand, N., Berthier, E., Bolch, T., Casey, K., Frey, H., Joshi, S. P., Konovalov, V., Bris, R. L., Mölg, N., Nosenko, G., Nuth, C., Pope, A., Racoviteanu, A., Rastner, P., Raup, B., Scharer, K., Steffen, S., and Winsvold, S.: On the accuracy of glacier outlines derived from remote sensing data, *Ann. Glaciol.*, 54, 171–182, doi:10.3189/2013AoG63A296, 2013.
- Pfeffer, W. T., Arendt, A. A., Bliss, A., Bolch, T., Cogley, J. G., Gardner, A. S., Hagen, J. O., Hock, R., Kaser, G., Kienholz, C., Miles, E. S., Moholdt, G., Mölg, N., Paul, F., Radić, V., Rastner, P., Raup, B. H., Rich, J., and Sharp, M. J.: The Randolph Glacier Inventory: a globally complete inventory of glaciers, *J. Glaciol.*, 60, 537–552, doi:10.3189/2014JoG13J176, 2014.
- Racoviteanu, A. and Williams, M. W.: Decision tree and texture analysis for mapping debris-covered glaciers: a case study from Kangchenjunga, eastern Himalaya, *Remote Sensing Special issue*, 4, 3078–3109, doi:10.3390/rs4103078, 2012.
- Racoviteanu, A., Arnaud, Y., and Williams, M.: Decadal changes in glacier parameters in Cordillera Blanca, Peru derived from remote sensing, *J. Glaciol.*, 54, 499–510, 2008a.
- Racoviteanu, A., Williams, M. W., and Barry, R.: Optical remote sensing of glacier mass balance: a review with focus on the Himalaya, *Remote Sens. Environ.*, 8, 3355–3383, doi:10.3390/s8053355, 2008b.
- Racoviteanu, A., Paul, F., Raup, B., Khalsa, S. J. S., and Armstrong, R.: Challenges and recommendations in mapping of glacier parameters from space: results of the 2008 Global Land Ice Measurements from Space (GLIMS) workshop, Boulder, Colorado, USA, *Ann. Glaciol.*, 50, 53–69, 2009.
- Racoviteanu, A., Armstrong, R., and Williams, M.: Evaluation of an ice ablation model to estimate the contribution of melting glacier ice to annual discharge in the Nepal Himalaya, *Water Resour. Res.*, 49, 5117–5133, doi:10.1002/wrcr.20370, 2013a.
- Racoviteanu, A., Nicholson, L., and Arnaud, Y.: Surface characteristics of debris-covered glacier tongues in the Khumbu Himalaya derived from remote sensing texture analysis, *European Geophysical Union (EGU) General Assembly*, Vienna, Austria, 7–12 April, 2013b.
- Racoviteanu, A., Arnaud, Y., Bahuguna, I. M., Bajracharya, S., Berthier, E., Bhambri, R., Bolch, T., Byrne, M., Chaujar, R. K., Kääb, A., Kamp, U., Kargel, J., Kulkarni, A. V., Leonard, G., Mool, P., Frauenfelder, R., and Sossna, I.: Himalayan glaciers, in: *Global Land and Ice Monitoring from Space: Satellite Multispectral Imaging of Glaciers*, edited by: Kargel, J. S., Bishop, M. P., Kääb, A., and Raup, B. H., Springer-Praxis, Heidelberg, Germany, 549–582, 2014.
- Raj, K. B. G., Remya, S. N., and Kumar, K. V.: Remote sensing-based hazard assessment of glacial lakes in Sikkim Himalaya, *Current Science*, 104, 359–364, 2013.
- Raup, B. and Khaksa, S. J. S.: GLIMS Analysis tutorial: [http://www.glims.org/MapsAndDocs/assets/GLIMS\\_Analysis\\_Tutorial\\_a4.pdf](http://www.glims.org/MapsAndDocs/assets/GLIMS_Analysis_Tutorial_a4.pdf) (last access: 4 January 2014), 2007.
- Raup, B. H., Kääb, A., Kargel, J. S., Bishop, M. P., Hamilton, G., Lee, E., Paul, F., Rau, F., Soltesz, D., Khalsa, S. J. S., Beedle, M., and Helm, C.: Remote sensing and GIS technology in the Global Land Ice Measurements from Space (GLIMS) Project, *Comput. Geosci.*, 33, 104–125, 2007.
- Rees, W. G.: *Remote sensing of snow and ice*, Taylor & Francis Group, Boca Raton, FL, USA, 2003.
- Sakai, A. and Fujita, K.: Correspondence: Formation conditions of supraglacial lakes on debris covered glaciers in the Himalaya, *J. Glaciol.*, 56, 177–181, 2010.
- Sakai, A., Nakawo, M., and Fujita, K.: Distribution Characteristics and Energy Balance of Ice Cliffs on Debris-Covered Glaciers, Nepal Himalaya, *Arct. Antarct. Alp. Res.*, 34, 12–19, 2002.
- Salerno, F., Buraschi, E., Brucoleri, G., Tartari, G., and Smiraglia, C.: Glacier surface-area changes in Sagarmatha national park, Nepal, in the second half of the 20th century, by comparison of historical maps, *J. Glaciol.*, 54, 738–752, 2008.
- Salerno, F., Thakuri, S., D'Agata, C., Smiraglia, C., Manfredi, E. C., Viviano, G., and Tartari, G.: Glacial lake distribution in the Mount Everest region: Uncertainty of measurement and conditions of formation, *Glob. Planet. Change*, 92–93, 30–39, 2012.
- Scherler, D., Bookhagen, B., and Strecker, M. R.: Spatially variable response of Himalayan glaciers to climate change affected by debris cover, *Nat. Geosci.*, 4, 156–159, 2011.
- Shanker, R.: Glaciological studies in India, Contribution from Glaciological Survey of India, in: *Proceedings of Symposium on Snow, Ice and Glacier*, March 1999, Geological Survey of India Special Publication 53, 11–15, 2001.
- Shrestha, A., Wake, C. P., Dibb, J. E., and Mayevski, P. A.: Precipitation fluctuations in the Nepal Himalaya and its vicinity and relationship with some large-scale climatologic patterns, *Int. J. Climatol.*, 20, 317–327, 2000.
- Srikantia, S. V.: Restriction on maps: A denial of valid geographic information, *Current Science*, 79, 484–488, 2000.
- Thakuri, S., Salerno, F., Smiraglia, C., Bolch, T., D'Agata, C., Viviano, G., and Tartari, G.: Tracing glacier changes since the 1960s on the south slope of Mt. Everest (central Southern Himalaya) using optical satellite imagery, *The Cryosphere*, 8, 1297–1315, doi:10.5194/tc-8-1297-2014, 2014.
- USGS-EROS: Declassified Imagery-1, available at: [https://lta.cr.usgs.gov/declass\\_1](https://lta.cr.usgs.gov/declass_1) (last access: 21 February 2015), 1962.
- Wagnon, P., Vincent, C., Arnaud, Y., Berthier, E., Vuillermoz, E., Gruber, S., Ménégoz, M., Gilbert, A., Dumont, M., Shea, J. M., Stumm, D., and Pokhrel, B. K.: Seasonal and annual mass balances of Mera and Pokalde glaciers (Nepal Himalaya) since 2007, *The Cryosphere*, 7, 1769–1786, doi:10.5194/tc-7-1769-2013, 2013.
- Wessels, R. L., Kargel, J. S., and Kieffer, H. H.: ASTER measurement of supraglacial lakes in the Mount Everest region of the Himalaya, *Ann. Glaciol.*, 34, 399–408, 2002.
- Yanai, M., Li, C., and Song, Z.: Seasonal heating of the Tibetan plateau and its effect on the evolution of the Asian summer monsoon, *J. Meteorol. Soc. Jpn.*, 70, 319–351, 1992.
- Zhang, Y., Fujita, K., Liu, S., Liu, Q., and Nuimura, T.: Distribution of debris thickness and its effect on ice melt at Hailuoguo glacier, southeastern Tibetan Plateau, using in situ surveys and ASTER imagery, *J. Glaciol.*, 57, 1147–1157, 2011.