

ADVANCED MATERIALS

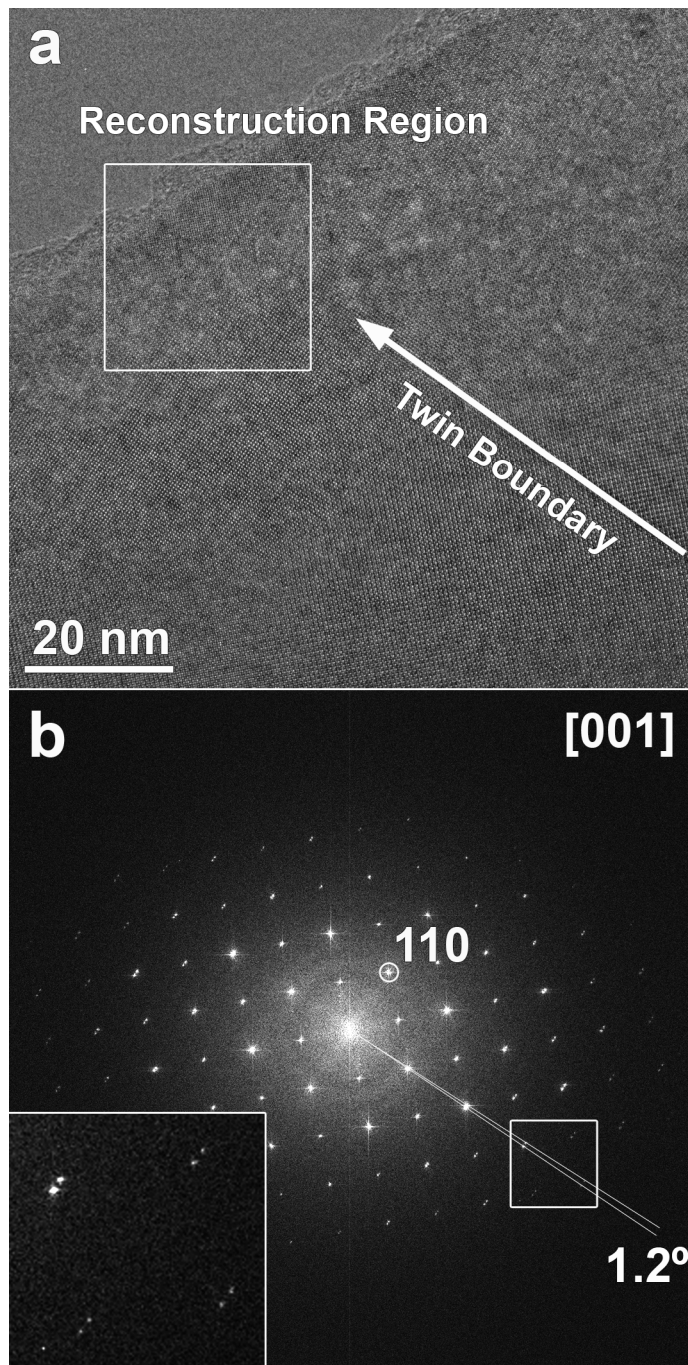
Supporting Information

for *Adv. Mater.*, DOI: 10.1002/adma.201103717

Direct Observation of Ferrielectricity at Ferroelastic Domain Boundaries in CaTiO_3 by
Electron Microscopy

Sandra Van Aert , * Stuart Turner , Rémi Delville , Dominique Schryvers ,
Gustaaf Van Tendeloo , and Ekhard K. H. Salje

Supplementary Figure



Supplementary Figure 1. a) Aberration-corrected high-resolution TEM image of the (110) twin boundary viewed along the [001] zone. b) FFT revealing the small spot splitting indicating the twin nature of the interface.