

Syddansk Universitet

## Open-ended response theory with polarizable embedding

Steindal, Arnfinn Hykkerud; Beerepoot, Maarten T P; Ringholm, Magnus; List, Nanna Holmgaard; Ruud, Kenneth; Kongsted, Jacob; Olsen, Jógvan Magnus Haugaard

*Published in:*  
Physical Chemistry Chemical Physics

*DOI:*  
[10.1039/c6cp05297e](https://doi.org/10.1039/c6cp05297e)

*Publication date:*  
2016

*Document version*  
Final published version

*Document license*  
CC BY

*Citation for pulished version (APA):*  
Steindal, A. H., Beerepoot, M. T. P., Ringholm, M., List, N. H., Ruud, K., Kongsted, J., & Olsen, J. M. H. (2016). Open-ended response theory with polarizable embedding: Multiphoton absorption in biomolecular systems. *Physical Chemistry Chemical Physics*, 18(40), 28339-28352. DOI: 10.1039/c6cp05297e

### General rights

Copyright and moral rights for the publications made accessible in the public portal are retained by the authors and/or other copyright owners and it is a condition of accessing publications that users recognise and abide by the legal requirements associated with these rights.

- Users may download and print one copy of any publication from the public portal for the purpose of private study or research.
- You may not further distribute the material or use it for any profit-making activity or commercial gain
- You may freely distribute the URL identifying the publication in the public portal ?

### Take down policy

If you believe that this document breaches copyright please contact us providing details, and we will remove access to the work immediately and investigate your claim.



Cite this: *Phys. Chem. Chem. Phys.*,  
2016, **18**, 28339

# Open-ended response theory with polarizable embedding: multiphoton absorption in biomolecular systems†

Arnfinn Hykkerud Steindal,<sup>a</sup> Maarten T. P. Beerepoot,<sup>a</sup> Magnus Ringholm,<sup>a</sup>  
Nanna Holmgaard List,<sup>‡b</sup> Kenneth Ruud,<sup>a</sup> Jacob Kongsted<sup>b</sup> and  
Jógvan Magnus Haugaard Olsen<sup>\*bc</sup>

We present the theory and implementation of an open-ended framework for electric response properties at the level of Hartree–Fock and Kohn–Sham density functional theory that includes effects from the molecular environment modeled by the polarizable embedding (PE) model. With this new state-of-the-art multiscale functionality, electric response properties to any order can be calculated for molecules embedded in polarizable atomistic molecular environments ranging from solvents to complex heterogeneous macromolecules such as proteins. In addition, environmental effects on multiphoton absorption (MPA) properties can be studied by evaluating single residues of the response functions. The PE approach includes mutual polarization effects between the quantum and classical parts of the system through induced dipoles that are determined self-consistently with respect to the electronic density. The applicability of our approach is demonstrated by calculating MPA strengths up to four-photon absorption for the green fluorescent protein. We show how the size of the quantum region, as well as the treatment of the border between the quantum and classical regions, is crucial in order to obtain reliable MPA predictions.

Received 30th July 2016,  
Accepted 19th September 2016

DOI: 10.1039/c6cp05297e

www.rsc.org/pccp

## 1 Introduction

Molecular properties are fundamental for understanding and interpreting experimental observations in chemistry and physics. Linear and nonlinear optical properties provide important information about the behavior of a molecule in the presence of electromagnetic fields, while properties involving nuclear motion can be used to determine molecular structure. Properties combining both of these categories enable prediction and interpretation of well-known spectroscopic phenomena such as infrared and Raman spectroscopy.<sup>1–6</sup> One way of calculating molecular properties is by the use of quantum-chemical response theory.<sup>6–8</sup> A recent formulation of response theory,<sup>9</sup> and its subsequent

implementation based on recursive routines,<sup>10</sup> allows any response property that can be formulated as a derivative of the molecular quasienergy to be calculated at the Hartree–Fock (HF) and Kohn–Sham density-functional theory (KS-DFT) levels. The implementation has recently been extended to enable the calculation of single residues of response functions,<sup>11</sup> which is needed for the evaluation of multiphoton absorption (MPA) strengths.

Before the developments of the present work, the open-ended response framework was formulated and implemented in a purely quantum-mechanical picture, which limited its applicability to relatively small or medium-sized molecular systems considered *in vacuo*. This treatment is often inadequate, since the majority of experiments are performed in an environment that can significantly perturb the properties of the molecule of interest. The absence of a proper description of the interaction between the system studied and its molecular environment can lead to discrepancies when comparing experimental observations to calculated results, ranging from minor deviations<sup>12–14</sup> to qualitative disagreement.<sup>15–17</sup> It is therefore important to develop models that can adequately describe the effects of the surrounding environment on the system being studied, *e.g.* embedding models, and a substantial amount of work has therefore been carried out in this area. We refer to a review by

<sup>a</sup> Centre of Theoretical and Computational Chemistry, Department of Chemistry, University of Tromsø—The Arctic University of Norway, N-9037 Tromsø, Norway

<sup>b</sup> Department of Physics, Chemistry and Pharmacy, University of Southern Denmark, DK-5230 Odense, Denmark. E-mail: jmo@sdu.dk

<sup>c</sup> Laboratory of Computational Chemistry and Biochemistry, École Polytechnique Fédérale de Lausanne (EPFL), CH-1015 Lausanne, Switzerland

† Electronic supplementary information (ESI) available: Numerical data (excitation energies and MPA strengths) for the results presented in the figures and in the text. See DOI: 10.1039/c6cp05297e

‡ Present address: Division of Theoretical Chemistry and Biology, School of Biotechnology, KTH Royal Institute of Technology, SE-106 91, Stockholm, Sweden.



Gomes and Jacob for a recent account of embedding methods for electronic excitation processes.<sup>18</sup> Classical embedding models can be roughly separated into continuum models,<sup>19</sup> where the molecular environment is described by a structureless dielectric medium, and hybrid quantum mechanics/molecular mechanics (QM/MM) models,<sup>20,21</sup> where the explicit molecular structure of the environment is retained. The effects from the environment on the quantum part are described by an embedding potential which is added to the electronic Hamiltonian.

In this work, we present an extension of the open-ended response theory approach to include environment effects based on the polarizable embedding (PE) model,<sup>22,23</sup> which is a combined fragmentation and QM/MM-based embedding approach (see ref. 24 for a recent perspective). This model has been formulated with the particular aim of accurately modeling environment effects in calculations of local response properties. Importantly, polarization of the environment is included to give a more physically sound coupling between the quantum region, its molecular environment, and the external field(s).<sup>25,26</sup> Several other polarizable QM/MM-based models have been formulated for optical property calculations (see *e.g.* ref. 27–32). The accuracy of the calculated results depends crucially on the ability of the embedding potential to reproduce the electrostatic potential. The embedding potential used in the PE model is therefore derived from *ab initio* calculations on the fragments defining the environment. This leads to high-quality electrostatic potentials, as has been demonstrated both for solvents<sup>22,33,34</sup> and proteins.<sup>35</sup> The open-ended formulation presented here is limited to electric response properties, *i.e.* polarizabilities, any order of hyperpolarizabilities, and MPA strengths through the single-residues functionality. We note, however, that although we will only discuss properties involving electric dipole perturbations, the formulation is also applicable to the calculation of properties that involve general electric multipole perturbations.

To demonstrate the applicability of this approach, we have calculated MPA properties of the green fluorescent protein (GFP). Multiphoton absorption is a nonlinear process, *i.e.* the signal depends nonlinearly on the intensity of the applied field, where the combined and simultaneous absorption of more than one photon leads to an excitation. Experimental observations have been reported up to five-photon absorption (5PA).<sup>36</sup> Technological applications, at present mostly based on two-photon absorption (2PA), benefit from the long wavelength of the involved photons and the intrinsic three-dimensional resolution of the process. Applications include three-dimensional data storage,<sup>37,38</sup> photodynamic therapy<sup>39</sup> and photoactivated drug delivery.<sup>40</sup> Another important application of MPA is multiphoton microscopy,<sup>41–44</sup> which enables high-resolution *in vivo* imaging. Multiphoton microscopy takes advantage of the long wavelength of photons in two-<sup>41</sup> and three-photon<sup>42,43</sup> processes to penetrate deeper into biological tissue and to reduce photodamage. Fluorescent proteins such as GFP and its mutants are frequently used fluorophores in multiphoton microscopy<sup>43,44</sup> owing to their high absorption cross sections,<sup>44</sup> extensive palette of available absorption and fluorescence wavelengths,<sup>44,45</sup> and ability to be genetically encoded to monitor *in vivo* gene expression and protein localization.<sup>45,46</sup>

Even though four-photon absorption (4PA) has been experimentally observed in GFP<sup>47</sup> and red fluorescent proteins,<sup>48</sup> two- and three-photon processes operate in the most advantageous spectral window for imaging in living tissue.<sup>43</sup> Three-photon absorption (3PA) requires a high laser intensity, but is especially useful for fluorophores that absorb in the ultraviolet range rather than in the visible region.<sup>42,43</sup> The calculation of 2PA in biological molecules was very recently reviewed by Salem, Gedik and Brown.<sup>49</sup> It has been shown experimentally<sup>50,51</sup> that the protein environment critically affects the 2PA signal of the chromophores of fluorescent proteins. Drobizhev *et al.* have shown that red fluorescent protein mutants with the same chromophore can have 2PA cross sections with differences as large as a factor of five.<sup>50</sup> This has been explained by differences in the local effective field around the chromophore in the different mutants.<sup>51</sup>

The work presented here is an important step towards computational predictions of MPA in biological systems. Specifically, we have combined an open-ended density-matrix-based formulation of response theory with the PE model, which thus allows calculations of response and multiphoton absorption properties of large molecular systems. The theoretical details of the implementation are provided in Section 2. In addition, we have performed initial investigations of some important aspects related to multiscale modeling of multiphoton absorption. The results are presented and discussed in Section 4 with the computational details given in Section 3.

## 2 Theory

We begin this section by showing the foundations of the PE model<sup>22,23</sup> and then move on to give a brief introduction to the open-ended response theory framework.<sup>9,10</sup> Finally, we present the expressions that incorporate the contributions that arise from the introduction of a polarizable embedding potential in the open-ended formulation of response theory. The theory is formulated for hybrid KS-DFT and reduces trivially to HF theory. Furthermore, it is expressed in a density-matrix formulation in an atomic-orbital (AO) basis,<sup>9</sup> the latter feature making the theory amenable to linear-scaling approaches for the quantum region.

### 2.1 Polarizable embedding

The PE model is an embedding method based on a combination of fragmentation and QM/MM methodologies that concentrates on an accurate inclusion of environment effects in the calculation of response properties. To achieve this, the total molecular system is partitioned into a quantum and a classical region, where the quantum region in this work is described by KS-DFT, and where the effects from the classical region are modeled through an embedding potential that consists of distributed multipole moments and polarizabilities, which describe the static and induced charge distributions, respectively. These embedding potential parameters are obtained by fragmenting the classical region into small computationally manageable fragments, from which distributed parameters are derived based on quantum-chemical calculations. This is a straightforward task for classical regions that consist of small molecules. However, for large



molecules where the fragmentation makes it necessary to cut covalent bonds, we employ a fragmentation method that involves overlapping fragments.<sup>52,53</sup>

The combined PE-DFT energy, expressed in terms of the density matrix in the AO basis, can be partitioned as

$$E(\mathbf{D}) = E_{\text{DFT}}(\mathbf{D}) + E_{\text{PE}}(\mathbf{D}), \quad (1)$$

where  $E_{\text{DFT}}(\mathbf{D})$  is the KS energy of the polarized quantum region and  $E_{\text{PE}}(\mathbf{D})$  is the PE energy. The KS energy is given by

$$E_{\text{DFT}}(\mathbf{D}) = \mathbf{h}\mathbf{D} + \frac{1}{2}\mathbf{G}^{\gamma}(\mathbf{D})\mathbf{D} + E_{\text{xc}}[\rho(\mathbf{D})] + h_{\text{nuc}}, \quad (2)$$

where  $\text{Tr}$  denotes tracing of each term on the right-hand side, the one-electron matrix  $\mathbf{h}$  describes the KS kinetic energy and the electron–nuclear attraction, the two-electron matrix  $\mathbf{G}^{\gamma}$  contains the electronic Coulomb and  $\gamma$ -fractional exchange interactions,  $E_{\text{xc}}[\rho(\mathbf{D})]$  is the exchange–correlation energy written as a functional of the density which in turn depends on the density matrix, and  $h_{\text{nuc}}$  is the nuclear interaction energy. We will not go into further detail about these standard terms but will instead turn our attention to the PE energy.

The PE energy consists of the contributions due to interactions between the quantum region and both the permanent and induced charge distributions of the classical region, *i.e.*

$$E_{\text{PE}}(\mathbf{D}) = E_{\text{PE}}^{\text{es}}(\mathbf{D}) + E_{\text{PE}}^{\text{ind}}(\mathbf{D}), \quad (3)$$

where  $E_{\text{PE}}^{\text{es}}(\mathbf{D})$  is the electrostatic energy from the interactions between the permanent multipole moments and the quantum-region electrons and nuclei, and where  $E_{\text{PE}}^{\text{ind}}(\mathbf{D})$  is the induction energy associated with the polarization of the classical region.

The electrostatic interaction energy can be written compactly using a multi-index notation $\S$

$$E_{\text{PE}}^{\text{es}}(\mathbf{D}) = \sum_{s=1}^S \sum_{|k|=0}^{K_s} \frac{(-1)^{|k|}}{k!} M_s^{(k)} \sum_{\mu\nu} t_{s,\mu\nu}^{(k)} D_{\mu\nu} + \sum_{s=1}^S \sum_{|k|=0}^{K_s} \frac{(-1)^{|k|}}{k!} M_s^{(k)} \sum_{n=1}^N T_{sn}^{(k)} Z_n \quad (4)$$

$$\text{Tr} = \mathbf{h}_{\text{PE}}^{\text{es}}\mathbf{D} + h_{\text{PE}}^{\text{es}},$$

where the summation over  $s$  runs over the  $S$  sites in the classical region,  $k$  is a multi-index,  $K_s$  is the truncation level of the multipole expansion, and  $M_s^{(k)}$  is a component of a  $|k|$ th-order multipole moment located at site  $s$ . The superscript  $(k)$  notation is used to indicate order and Cartesian component. For example, in the case of multipoles,  $k = (0, 0, 0)$  specifies a monopole (*i.e.* charge),  $k = (0, 1, 0)$  corresponds to the  $y$ -component of a dipole, and so on for higher-order multipoles and different Cartesian components. Furthermore,  $\mu$  and  $\nu$  are indices of AO basis functions belonging

$\S$  A multi-index  $k$  is an ordered 3-tuple of nonnegative integers that are associated with a component of a Cartesian coordinate as indicated by the subscript, *i.e.*  $k = (k_x, k_y, k_z)$ . The norm and factorial of a multi-index are defined as  $|k| = k_x + k_y + k_z$  and  $k! = k_x!k_y!k_z!$ , respectively. The multi-index partial derivative operator is defined as  $\partial^k = \frac{\partial^{|k|}}{\partial k_x \partial k_y \partial k_z}$ . Summing over a multi-index norm, *e.g.*  $|k|$ , implies a summation over all multi-indices whose norm equals  $|k|$ .<sup>54</sup>

to the quantum region,  $D_{\mu\nu}$  is an element of the AO density matrix, and  $t_{s,\mu\nu}^{(k)}$  is a one-electron interaction integral defined as

$$t_{s,\mu\nu}^{(k)} = - \int \chi_{\mu}(\mathbf{r}) \partial_{\mathbf{r}}^k \frac{1}{|\mathbf{r} - \mathbf{r}_s|} \chi_{\nu}(\mathbf{r}) d\mathbf{r}, \quad (5)$$

which involves partial derivatives of the potential operator. Finally, eqn (4) also involves a sum over the  $N$  nuclei in the quantum region and  $Z_n$  is thus the charge of the  $n$ th nucleus. The interaction between multipoles and nuclei is described *via* the so-called interaction tensors whose elements are defined by

$$T_{ij}^{(k)} = \partial_j^k \frac{1}{|\mathbf{r}_j - \mathbf{r}_i|}. \quad (6)$$

The first part of eqn (4) is the contribution to the energy that is due to the interaction between the electrons in the quantum region and the multipoles in the classical region, and the second part of eqn (4) is the energy contribution that is due to the interaction of the nuclei in the quantum region and the multipoles.

The polarization of the classical region gives rise to the induction energy contribution given by

$$E_{\text{PE}}^{\text{ind}}(\mathbf{D}) = -\frac{1}{2} \sum_{s=1}^S \bar{\mu}_s(\mathbf{D})^T \mathbf{E}(\mathbf{D}, \mathbf{r}_s) = -\frac{1}{2} \sum_{s=1}^S \sum_{s'=1}^S \mathbf{E}^{\text{e}}(\mathbf{D}, \mathbf{r}_s)^T \mathbf{B}_{ss'} \mathbf{E}^{\text{e}}(\mathbf{D}, \mathbf{r}_{s'}) - \sum_{s=1}^S \sum_{s'=1}^S (\mathbf{E}^{\text{n}}(\mathbf{r}_s) + \mathbf{E}^{\text{m}}(\mathbf{r}_s))^T \mathbf{B}_{ss'} \mathbf{E}^{\text{e}}(\mathbf{D}, \mathbf{r}_{s'}) - \frac{1}{2} \sum_{s=1}^S \sum_{s'=1}^S (\mathbf{E}^{\text{n}}(\mathbf{r}_s) + \mathbf{E}^{\text{m}}(\mathbf{r}_s))^T \mathbf{B}_{ss'} (\mathbf{E}^{\text{n}}(\mathbf{r}_{s'}) + \mathbf{E}^{\text{m}}(\mathbf{r}_{s'})) = \frac{1}{2} \mathbf{G}_{\text{PE}}^{\text{ind}}(\mathbf{D})\mathbf{D} + \mathbf{h}_{\text{PE}}^{\text{ind}}\mathbf{D} + h_{\text{PE}}^{\text{ind}}, \quad (7)$$

where  $\bar{\mu}_s(\mathbf{D})$  is an induced dipole located at site  $s$  and  $\mathbf{E}(\mathbf{D}, \mathbf{r}_s)$  is the electric field at this site generated by the quantum-region electrons and nuclei, and the permanent multipole moments in the classical region. The second equality is obtained by making use of the fact that the induced dipoles and electric fields can be separated into contributions stemming from the electrons, nuclei and permanent multipole moments (indicated by superscripts e, n, and m, respectively), and that an induced dipole can be expressed as

$$\bar{\mu}_s(\mathbf{D}) = \sum_{s'=1}^S \mathbf{B}_{ss'} (\mathbf{E}^{\text{e}}(\mathbf{D}, \mathbf{r}_{s'}) + \mathbf{E}^{\text{n}}(\mathbf{r}_{s'}) + \mathbf{E}^{\text{m}}(\mathbf{r}_{s'})). \quad (8)$$

Eqn (8) introduces the  $\mathbf{B}_{ss'}$  matrices that are  $3 \times 3$  subblocks of the (symmetric) classical linear response matrix,<sup>55</sup>

$$\mathbf{B} = \begin{pmatrix} \alpha_1^{-1} & -\mathbf{T}_{12}^{(2)} & \cdots & -\mathbf{T}_{1S}^{(2)} \\ -\mathbf{T}_{21}^{(2)} & \alpha_2^{-1} & \ddots & \vdots \\ \vdots & \ddots & \ddots & -\mathbf{T}_{(S-1)S}^{(2)} \\ -\mathbf{T}_{S1}^{(2)} & \cdots & -\mathbf{T}_{S(S-1)}^{(2)} & \alpha_S^{-1} \end{pmatrix}^{-1}, \quad (9)$$



which contains the inverse of the electronic dipole-dipole polarizabilities in the diagonal blocks and second-order interaction tensors in the off-diagonal blocks (where the superscript (2) in this case denotes the tensor rank). The final equality in eqn (7) is obtained by taking into consideration the fact that the electronic electric field is defined by

$$E_a^c(\mathbf{D}, \mathbf{r}_s) = \mathbf{t}_a(\mathbf{r}_s) \mathbf{D}, \quad (10)$$

where the index  $a$  indicates a Cartesian component of the field, and where  $\mathbf{t}_a(\mathbf{r}_s)$  is a one-electron matrix whose elements are defined as

$$t_{a,\mu\nu}(\mathbf{r}_s) = - \int \chi_\mu(\mathbf{r}) \frac{(r_{s,a} - r_a)}{|\mathbf{r}_s - \mathbf{r}|^3} \chi_\nu(\mathbf{r}) d\mathbf{r}. \quad (11)$$

The PE contributions to the KS matrix are determined by minimizing the total energy in eqn (1) with respect to variations in the electronic density. Consequently, only terms that involve the electron density enter into the effective KS operator

$$\mathbf{F}_{\text{PE}} = \mathbf{h}_{\text{PE}}^{\text{es}} + \mathbf{G}_{\text{PE}}^{\text{ind}}(\mathbf{D}) + \mathbf{h}_{\text{PE}}^{\text{ind}}. \quad (12)$$

From this expression, it can be seen that the quadratic dependence of the induction energy in eqn (7) on the electron density translates into a KS matrix contribution that takes a form similar to the Coulomb term in the vacuum KS matrix, but involving products of one-electron integrals rather than two-electron integrals.

## 2.2 Open-ended calculation of response functions

In this section, we give an introduction to the open-ended density-matrix-based formulation of response theory<sup>9</sup> which has been implemented using recursive programming techniques.<sup>10</sup> A more detailed presentation of this theory, without consideration of environment effects, can be found in previous papers.<sup>9,10</sup>

Our starting point is to express response functions as derivatives of a perturbation-strength-differentiated quasienergy derivative Lagrangian which is time-averaged and evaluated at zero perturbation strengths. A linear response function  $\langle\langle A; B \rangle\rangle_{\omega_b}$  can then be expressed as

$$\langle\langle A; B \rangle\rangle_{\omega_b} = \frac{d\{\tilde{L}^a(\tilde{\mathbf{D}}, t)\}_T}{d\varepsilon_b} \Big|_{\{\varepsilon\}=0} = L^{ab}; \quad \omega_a = -\omega_b, \quad (13)$$

in an AO density-matrix parametrization. The superscripts  $(\cdot)^{abc\dots}$  denote perturbation-strength differentiation with respect to perturbations  $a, b, c, \dots$  with associated frequencies  $\omega_a, \omega_b, \omega_c, \dots$ . A tilde above a symbol denotes evaluation at general perturbation strengths, while the same symbol without a tilde denotes evaluation at zero perturbation strength. The quasienergy derivative Lagrangian  $\tilde{L}^a(\tilde{\mathbf{D}}, t)$  can be expressed as

$$\tilde{L}^a(\tilde{\mathbf{D}}, t) \stackrel{\{\text{Tr}\}_T}{=} \tilde{\mathcal{E}}^{0,a} - \tilde{\mathbf{S}}^a \tilde{\mathbf{W}}, \quad (14)$$

where  $\stackrel{\{\text{Tr}\}_T}{=}$  indicates that the trace and time-average of each term on the right-hand side are taken, and where we introduced

the overlap matrix  $\tilde{\mathbf{S}}$  and a generalization of the energy-weighted density matrix  $\tilde{\mathbf{W}}$  defined as

$$\tilde{\mathbf{W}} = \tilde{\mathbf{D}} \tilde{\mathcal{F}} \tilde{\mathbf{D}} + \frac{i}{2} (\dot{\tilde{\mathbf{D}}} \tilde{\mathbf{S}} \tilde{\mathbf{D}} - \tilde{\mathbf{D}} \dot{\tilde{\mathbf{S}}}). \quad (15)$$

Eqn (14) and (15) introduce the generalized KS energy  $\tilde{\mathcal{E}}$  and KS matrix  $\tilde{\mathcal{F}}$ , given by

$$\begin{aligned} \tilde{\mathcal{E}} &\stackrel{\{\text{Tr}\}_T}{=} \tilde{E}(\tilde{\mathbf{D}}, t) - \frac{i}{2} \tilde{\mathbf{T}} \tilde{\mathbf{D}} \\ &= \left( \tilde{\mathbf{h}} + \tilde{\mathbf{V}}^t + \frac{1}{2} \tilde{\mathbf{G}}^y(\tilde{\mathbf{D}}) - \frac{i}{2} \tilde{\mathbf{T}} \right) \tilde{\mathbf{D}} + \tilde{E}_{\text{xc}}[\tilde{\rho}(\tilde{\mathbf{D}})] + \tilde{h}_{\text{nuc}} \end{aligned} \quad (16)$$

and

$$\tilde{\mathcal{F}} = \tilde{\mathbf{F}} - \frac{i}{2} \tilde{\mathbf{T}} = \tilde{\mathbf{h}} + \tilde{\mathbf{G}}^y(\tilde{\mathbf{D}}) + \tilde{\mathbf{V}}^t + \tilde{\mathbf{F}}_{\text{xc}} - \frac{i}{2} \tilde{\mathbf{T}}, \quad (17)$$

respectively. In eqn (16) and (17), we introduced the anti-Hermitian time-differentiated overlap matrix  $\tilde{\mathbf{T}}$  and the one-electron matrix describing the time-dependent perturbation  $\tilde{\mathbf{V}}^t$ . We remark that for the electric response properties, which are the topic of this work, contributions from  $\tilde{\mathbf{T}}$  are all zero, and we have included these terms in the above expressions only for the sake of completeness.

Introducing the notation

$$\mathcal{E}^{m,abc} = \frac{\partial^{m+3} \mathcal{E}}{(\partial \mathbf{D}^T)^m \partial \varepsilon_a \partial \varepsilon_b \partial \varepsilon_c}, \quad (18)$$

response functions in the  $n + 1$  rule formulation can now be obtained by straightforward differentiation of eqn (14), so that, for example, a quadratic response function can be expressed as

$$\begin{aligned} L^{abc} &\stackrel{\{\text{Tr}\}_T}{=} \mathcal{E}^{0,abc} + \mathcal{E}^{1,ac} \mathbf{D}^b + \mathcal{E}^{1,ab} \mathbf{D}^c \\ &\quad + \mathcal{E}^{2,a} \mathbf{D}^b \mathbf{D}^c + \mathcal{E}^{1,a} \mathbf{D}^{bc} - \mathbf{S}^{abc} \mathbf{W} \\ &\quad - \mathbf{S}^{ab} \mathbf{W}^c - \mathbf{S}^{ac} \mathbf{W}^b - \mathbf{S}^a \mathbf{W}^{bc}, \end{aligned} \quad (19)$$

where the tracing of matrix products is for instance given by

$$\text{Tr}(\mathcal{E}^{2,a} \mathbf{D}^b \mathbf{D}^c) = \sum_{\alpha\beta\mu\nu} \frac{\partial^3 \mathcal{E}}{\partial D_{\beta\alpha} \partial D_{\nu\mu} \partial \varepsilon_a} D_{\alpha\beta}^b D_{\mu\nu}^c. \quad (20)$$

Formulations based on other choices than the  $n + 1$  rule, which can be any between and including the  $n + 1$  and  $2n + 1$  rules,<sup>56</sup> are also possible by the introduction of Lagrangian multipliers. For the sake of compactness, we introduce the notation

$$[\tilde{\mathbf{M}}]^\ominus = \tilde{\mathbf{M}} - \tilde{\mathbf{M}}^\dagger \quad (21)$$

and

$$[\tilde{\mathbf{M}}]^\oplus = \tilde{\mathbf{M}} + \tilde{\mathbf{M}}^\dagger, \quad (22)$$

where adjugation is done before any field strength differentiation. The idempotency condition for the density matrix can be expressed with the matrix  $\tilde{\mathbf{Y}}$ , so that

$$\tilde{\mathbf{Y}} = \tilde{\mathbf{D}} \tilde{\mathbf{S}} \tilde{\mathbf{D}} - \tilde{\mathbf{D}}, \quad (23)$$





and we express the time-dependent SCF condition as the matrix  $\mathbf{Z}$ , defined as

$$\tilde{\mathbf{Z}} = \left[ \left( \tilde{\mathcal{F}} - \frac{i}{2} \tilde{\mathbf{S}} \frac{d}{dt} \right) \tilde{\mathbf{D}} \tilde{\mathbf{S}} \right]^{\ominus}. \quad (24)$$

Introducing the Lagrangian multipliers

$$\tilde{\lambda}^a = [\tilde{\mathbf{D}}^a \tilde{\mathbf{S}} \tilde{\mathbf{D}}]^{\ominus} \quad (25)$$

and

$$\tilde{\zeta}^a = \left[ \tilde{\mathcal{F}}^a \left( \tilde{\mathbf{D}} \tilde{\mathbf{S}} - \frac{1}{2} \right) - \left( \tilde{\mathcal{F}} \tilde{\mathbf{D}} - \frac{i}{2} \tilde{\mathbf{S}} \dot{\tilde{\mathbf{D}}} - i \tilde{\mathbf{S}} \dot{\tilde{\mathbf{D}}} \right) \tilde{\mathbf{S}}^a \right]^{\oplus}, \quad (26)$$

the general expression for an arbitrary response property can be written as

$$\begin{aligned} \langle \langle A; B, C, \dots \rangle \rangle_{\omega_{bc\dots}} &= \mathcal{L}_{k,n}^{abc\dots} \\ &= \overset{(\text{Tr})T}{\mathcal{E}}_{k,n}^{abc\dots} - (\mathbf{S}\mathbf{W})_{nW}^{abc\dots} - (\mathbf{S}^a \mathbf{W})_{kS, n'W}^{bc\dots} \\ &\quad - (\lambda^a \mathbf{Y})_{k_i, n'_Y}^{bc\dots} - (\zeta^a \mathbf{Z})_{k_z, n'_Z}^{bc\dots}, \end{aligned} \quad (27)$$

where the subscripts  $k$  and  $n$  are related to truncations of terms that involve the matrices  $\mathbf{D}$ ,  $\mathbf{F}$ , and  $\mathbf{S}$  perturbed with respect to perturbation tuples including and not including perturbation  $a$ , respectively. In particular, for the energy-type contribution  $\mathcal{E}_{k,n}^{abc\dots}$ , all terms involving  $\mathbf{D}$  perturbed to higher order than  $k$  for perturbation tuples involving perturbation  $a$ , and to higher order than  $n$  for perturbation tuples not involving perturbation  $a$  can be removed from the expression. We refer to ref. 9 for additional details about such truncations, but note that for a property that is formulated as an  $N'$ th order derivative of the energy, it generally holds that  $k + n = N - 1$ , where  $k$  can be chosen as an integer in the interval  $k \in [0, (N - 1)/2]$  where integer division of  $(N - 1)/2$  is applied for even values of  $N$ . We denote the choice between the various possible pairwise values of  $k$  and  $n$  at a given order  $N$  as the  $(k, n)$  rule choice, constituting a generalization of the choice of truncation rule. In this generalization, the previously mentioned  $n + 1$  and  $2n + 1$  rules are two of several possible choices, the number of such choices depending on the number of available choices of  $k$ .

The evaluation of eqn (27) at a given  $(k, n)$  rule choice and the identification and calculation of the necessary perturbed  $\mathbf{D}$ ,  $\mathbf{F}$ , and  $\mathbf{S}$  matrices can be done by employing a series of algorithms that to a varying extent involve recursion. A comprehensive overview of these algorithms is given in ref. 10 and 11, and we restrict ourselves here to briefly introducing the elements that are relevant for the inclusion of the environment effects detailed in the next section.

We denote the density and KS matrices that are perturbed with respect to a perturbation tuple  $b_N$  as  $\mathbf{D}_{\omega}^{b_N}$  and  $\mathcal{F}_{\omega}^{b_N}$ , respectively. The algorithmic approach rests on the separation of  $\mathbf{D}_{\omega}^{b_N}$  into particular and homogeneous parts  $\mathbf{D}_{\text{P}}^{b_N}$  and  $\mathbf{D}_{\text{H}}^{b_N}$ , respectively, as

$$\mathbf{D}_{\omega}^{b_N} = \mathbf{D}_{\text{P}}^{b_N} + \mathbf{D}_{\text{H}}^{b_N}, \quad (28)$$

where  $\mathbf{D}_{\text{P}}^{b_N}$  and  $\mathbf{D}_{\text{H}}^{b_N}$  are determined at different stages during the execution of the algorithm. The perturbed KS matrix  $\mathcal{F}_{\omega}^{b_N}$  can be partitioned as

$$\mathcal{F}_{\omega}^{b_N} = \mathbf{G}^{\text{KS}}(\mathbf{D}_{\text{H}}^{b_N}) + \mathbf{G}^{\text{KS}}(\mathbf{D}_{\text{P}}^{b_N}) + \mathcal{F}_{\omega}^{b_N, n-1}, \quad (29)$$

where  $\mathbf{G}^{\text{KS}}$  contains the sum of two-electron and exchange-correlation contributions as

$$\mathbf{G}^{\text{KS}}(\mathbf{M}) = \mathbf{G}^{\gamma}(\mathbf{M}) + \mathbf{G}^{\text{xc}}(\mathbf{M}), \quad (30)$$

and where  $\mathcal{F}_{\omega}^{b_N, n-1}$  contains all contributions to  $\mathcal{F}_{\omega}^{b_N}$  that do not depend on  $\mathbf{D}_{\omega}^{b_N}$ . Through an approach that involves solving a linear equation system involving  $\mathbf{D}_{\text{P}}^{b_N}$  to obtain parameters that can be used to determine  $\mathbf{D}_{\text{H}}^{b_N}$ , the  $\mathbf{D}_{\omega}^{b_N}$  and  $\mathcal{F}_{\omega}^{b_N}$  matrices of interest can be obtained.

Multiphoton transition moments can be calculated from the single residues of the response functions.<sup>7</sup> A thorough presentation of this procedure in the context of open-ended response theory has been given in ref. 11, and since the addition of environment effects through the PE model enters in the same way for single residues of response functions as for the response functions themselves, we consider it sufficient to only include a presentation of the latter in this work.

### 2.3 Polarizable embedding in the open-ended response framework

In the following, we will show that environment effects described by the PE model can be included in calculations of electric response properties by rather modest modifications of the approach presented in Section 2.2.

In the presence of an external electric field, the local field experienced by the quantum region is modified by the interactions between the classical region and the external field. In addition to the static reaction field in the unperturbed energy and KS matrix in eqn (3) and (12), respectively, additional contributions arise as a consequence of the dipole polarization in the classical region induced by the perturbed quantum region and the external electric field. The former gives rise to a dynamic reaction field, and the latter to an effective external field (EEF), which describes the effective field in the classical region devoid of the quantum part.<sup>26</sup> This EEF effect is similar in origin to the cavity-field effects introduced in the context of polarizable continuum models.<sup>57–60</sup> The EEF effect enters in the definitions of the response and transition properties of the quantum region and increases with increasing number of photons.<sup>26</sup> It should therefore be taken into account in calculations of properties that involve the external field. This is achieved by replacing the electric field vector in eqn (8), which generates the induced dipoles, with its time-dependent analogue augmented with the time-dependent external field  $\tilde{\mathbf{E}}^t$ , so that

$$\tilde{\mathbf{E}}(\tilde{\mathbf{D}}, \mathbf{r}_s) = \tilde{\mathbf{E}}^e(\tilde{\mathbf{D}}, \mathbf{r}_s) + \tilde{\mathbf{E}}^n(\mathbf{r}_s) + \mathbf{E}^m(\mathbf{r}_s) + \tilde{\mathbf{E}}^t(\mathbf{r}_s), \quad (31)$$

where the electric dipole approximation was assumed in the last term. The external field can be considered to be uniform in the long-wavelength limit and we can therefore omit its dependency on the position, *i.e.*  $\tilde{\mathbf{E}}^t(\mathbf{r}_s) = \tilde{\mathbf{E}}^t$ .



When including the environment effects in the response theory framework, it is convenient to separate the energy and KS matrix contributions according to their degree of dependence on the density matrix. For the PE energy, this dependence can be either zeroth-, first- or second-order, and the corresponding contributions are denoted by  $\tilde{E}_{\text{PE},0}$ ,  $\tilde{E}_{\text{PE},1}$ , and  $\tilde{E}_{\text{PE},2}$ , which can be written as

$$\tilde{E}_{\text{PE},0} = \tilde{h}_{\text{PE}}^{\text{es}} + \tilde{h}_{\text{PE}}^{\text{ind}} + \tilde{h}_{\text{EEF}}^{(1)} + \tilde{h}_{\text{EEF}}^{(2)}, \quad (32)$$

$$\tilde{E}_{\text{PE},1} = \tilde{\mathbf{h}}_{\text{PE}}^{\{\text{Tr}\}T} \tilde{\mathbf{D}} + \tilde{\mathbf{h}}_{\text{PE}}^{\text{ind}} \tilde{\mathbf{D}} + \tilde{\mathbf{h}}_{\text{EEF}}^{(1)} \tilde{\mathbf{D}}, \quad (33)$$

and

$$\tilde{E}_{\text{PE},2} = \tilde{\mathbf{G}}_{\text{PE}}^{\{\text{Tr}\}T}(\tilde{\mathbf{D}})\tilde{\mathbf{D}}, \quad (34)$$

respectively. The EEF contributions are the additional terms, involving the external electric field, which enter into the time-dependent analogue of eqn (7). The  $\tilde{h}_{\text{EEF}}^{(1)}$  term couples the external field to the fields from the nuclei and permanent multipole moments so that

$$\tilde{h}_{\text{EEF}}^{(1)} = - \sum_{s=1}^S \sum_{s'=1}^S (\tilde{\mathbf{E}}^{\text{n}}(\mathbf{r}_s) + \mathbf{E}^{\text{m}}(\mathbf{r}_s))^T \mathbf{B}_{s's'} \tilde{\mathbf{E}}^t, \quad (35)$$

and it thus depends linearly on the external field, whereas  $\tilde{h}_{\text{EEF}}^{(2)}$  depends quadratically on the external field, so that

$$\tilde{h}_{\text{EEF}}^{(2)} = -\frac{1}{2} \sum_{s=1}^S \sum_{s'=1}^S \tilde{\mathbf{E}}^{tT} \mathbf{B}_{s's'} \tilde{\mathbf{E}}^t. \quad (36)$$

The EEF contribution that couples the external field to the electronic field, which therefore has a first-order dependence on the density matrix and depends linearly on the external field, is defined by

$$\text{Tr}(\tilde{\mathbf{h}}_{\text{EEF}}^{(1)} \tilde{\mathbf{D}}) = - \sum_{s=1}^S \sum_{s'=1}^S \tilde{\mathbf{E}}^{\text{e}}(\tilde{\mathbf{D}}, \mathbf{r}_s)^T \mathbf{B}_{s's'} \tilde{\mathbf{E}}^t. \quad (37)$$

For the KS matrix contributions, the dependence on the density matrix can be either zeroth- or first-order, and the respective contributions are called  $\tilde{\mathbf{F}}_{\text{PE},0}$  and  $\tilde{\mathbf{F}}_{\text{PE},1}$ , and are given by

$$\tilde{\mathbf{F}}_{\text{PE},0} = \tilde{\mathbf{h}}_{\text{PE}}^{\text{es}} + \tilde{\mathbf{h}}_{\text{PE}}^{\text{ind}} + \tilde{\mathbf{h}}_{\text{EEF}}^{(1)} \quad (38)$$

and

$$\tilde{\mathbf{F}}_{\text{PE},1} = \tilde{\mathbf{G}}_{\text{PE}}^{\text{ind}}(\tilde{\mathbf{D}}), \quad (39)$$

respectively. The PE contributions to the generalized KS energy and KS matrix can then be included by adding the right-hand sides of eqn (32)–(34), (38) and (39) to eqn (16) and (17), respectively, so that

$$\tilde{\mathcal{E}}^{\{\text{Tr}\}T} = \tilde{E}(\tilde{\mathbf{D}}, t) + \tilde{E}_{\text{PE},0} + \tilde{E}_{\text{PE},1}(\tilde{\mathbf{D}}) + \tilde{E}_{\text{PE},2}(\tilde{\mathbf{D}}) - \frac{i}{2} \tilde{\mathbf{T}} \tilde{\mathbf{D}}, \quad (40)$$

and

$$\tilde{\mathcal{F}} = \tilde{\mathbf{F}} + \tilde{\mathbf{F}}_{\text{PE},0} + \tilde{\mathbf{F}}_{\text{PE},1} - \frac{i}{2} \tilde{\mathbf{T}}. \quad (41)$$

When calculating the properties considered in this work, the above contributions are differentiated with respect to one

or more perturbation strengths. Upon differentiation of eqn (32)–(34) with respect to a tuple of  $N$  perturbations, it follows from the  $(k, n)$  rule that at most  $N - 1$  perturbations can be assigned to differentiation of density matrices. Therefore, at least one perturbation strength in the tuple must differentiate a non-density-matrix term. Taking this into consideration and furthermore considering the density-matrix dependence of each term, the parts of eqn (32)–(39) that do not vanish upon differentiation with respect to a tuple  $b_N$  of perturbations  $a, b, c, \dots$ , are

$$E_{\text{PE},0}^{b_N} = h_{\text{EEF}}^{(1),b_N} + h_{\text{EEF}}^{(2),b_N} \quad (42)$$

$$E_{\text{PE},1}^{b_N} = \sum_{i=a}^N \left( \mathbf{h}_{\text{EEF}}^{(1),i} \mathbf{D}^{(b_N \setminus i)} \right) \quad (43)$$

and

$$\mathbf{F}_{\text{PE},0}^{b_N} = \mathbf{h}_{\text{EEF}}^{(1),b_N} \quad (44)$$

$$\mathbf{F}_{\text{PE},1}^{b_N} = \mathbf{G}_{\text{PE}}^{\text{ind}}(\mathbf{D}^{b_N}), \quad (45)$$

where  $h_{\text{EEF}}^{(1),b_N}$  and  $\mathbf{h}_{\text{EEF}}^{(1),b_N}$  are zero if  $N > 1$ ,  $\tilde{h}_{\text{EEF}}^{(2),b_N}$  is zero if  $N > 2$ , and where the summation in eqn (43) runs over all perturbations in  $b_N$ . In eqn (43), the collection  $\{b_N \setminus i\}$  denotes the  $b_N$  perturbation tuple except perturbation  $i$ , and the terms in this equation may be subject to further truncation depending on the choice of  $(k, n)$  rule. Consequently, for electric response properties, the inclusion of a polarizable environment in the response property scheme of Section 2.2 is accomplished relatively straightforwardly by calculating the terms in eqn (42)–(45) and adding them in the appropriate places.

## 3 Computational details

### 3.1 Molecular structures

Structures for GFP with a neutral and anionic chromophore were taken from ref. 61. The structures were obtained from a classical molecular dynamics simulation using the empirical force field of Reuter *et al.*<sup>62</sup> starting from the 1GFL crystal structure.<sup>63</sup> In total 50 snapshots were obtained at intervals of 300 ps from a 15 ns production run. The geometry of the chromophore was optimized within the frozen protein environment as described in ref. 61, to which we refer for further details on the preparation of the molecular structures. The protein model is solvated in water and includes all water molecules within 8 Å from any  $C_{\alpha}$  atom.<sup>61</sup>

Three different sizes of the quantum region were investigated. For the smallest, the quantum region was chosen as in previous work<sup>61,64–66</sup> and consisted of residues 65 to 67 as well as the backbone C=O from residue 64 and the backbone NH from residue 68 (Fig. 1a). The medium quantum region contained, in addition to this, the  $C_{\alpha}H$  from residues 64 and 68 (Fig. 1b) and is the same quantum region as used in the cluster model in ref. 66 and 67. The large quantum region contained the complete residues 64 to 68 as well as the backbone  $COC_{\alpha}H$  from residue 63 and backbone  $NHC_{\alpha}H$  from residue 69 (Fig. 1c). Hydrogen caps were added in all cases.



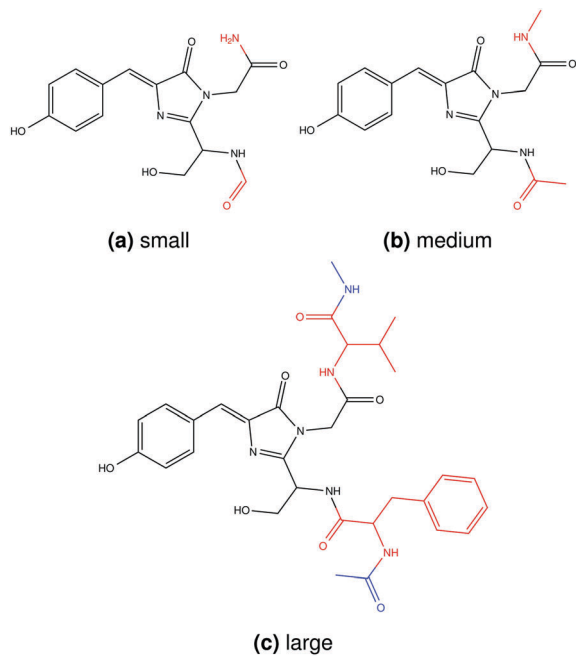


Fig. 1 Chemical structures of the quantum regions investigated in this work. Atoms from residues 65–67 (chromophore) are shown in black, from residues 64 and 68 in red, and from residues 63 and 69 in blue.

### 3.2 Generation of embedding potentials

The embedding potential parameters for GFP were calculated as described in ref. 61, based on the extensive tests reported in ref. 64. For the small quantum region (Fig. 1a), this means that the parameters were the same as in ref. 61. The potentials consisted of LoProp<sup>68</sup> atom-centered multipoles (up to quadrupoles) and anisotropic dipole–dipole polarizabilities, calculated in Molcas.<sup>69,70</sup> These embedding potential parameters were calculated with KS-DFT (B3LYP<sup>71–74</sup>/6-31+G\*<sup>75–77</sup>) using the molecular fractionation with conjugate caps approach by Zhang and Zhang<sup>52</sup> that was extended to multipoles and polarizabilities by Söderhjelm and Ryde.<sup>53</sup> The basis set was recontracted to an atomic natural orbital type basis as required by the LoProp approach.<sup>68</sup>

### 3.3 Multiphoton absorption calculations

All MPA property calculations were performed with a modified version of the Dalton quantum chemistry program,<sup>78,79</sup> using a local version of the recursive and open-ended response code<sup>10</sup> introduced in Section 2.2. These programs are linked to the PE library (PElib),<sup>80</sup> which makes use of the Gen1Int library<sup>81,82</sup> to calculate perturbed one-electron integrals. The exchange–correlation contributions were obtained using the XCint<sup>83</sup> and XCFun<sup>84</sup> libraries.

Vertical excitation energies and MPA transition moments for the  $\pi \rightarrow \pi^*$  excitation in GFP were calculated with the range-separated CAM-B3LYP exchange–correlation functional.<sup>85</sup> This functional is better suited for the description of charge-transfer excitations than common hybrid functionals<sup>86</sup> despite a general overestimation of the excitation energies.<sup>87</sup> The basis set used in the calculations was chosen consistently with the KS-DFT-derived

embedding potential parameters, namely 6-31+G\*.<sup>75–77</sup> This basis set was previously found to represent a good compromise between computational cost and accuracy for one- and two-photon absorption calculations on the same molecular systems.<sup>64</sup> We therefore expect that the trends found in this work are representative, but recommend the use of a larger basis set for quantitative work. The MPA moments include the EEF effect<sup>26</sup> as described in Section 2.3, unless otherwise specified.

Since the GFP chromophore has two covalent bonds to the rest of the protein, two quantum–classical cuts are necessary for each of the quantum regions in Fig. 1. There are several schemes proposed for handling these quantum–classical boundaries.<sup>21</sup> In this work we have used the link-atom approach where hydrogen caps were inserted on both sides of the cut, and sites in the classical region that are closer than 1.4 Å to any quantum-region atom were removed. Their charges were distributed to preserve the total charge of the protein whereas their higher-order multipoles and polarizabilities were removed. The redistribution scheme was tested by redistributing the charges to either the nearest one, two, or three sites, or to all sites in the classical region (see results in Section 4.1 and Tables S3 and S4 in the ESI†). The redistribution to all classical sites essentially corresponds to removal of the affected charges at the quantum–classical border because of the number of sites in the system considered here (> 8000), except that it preserves the total charge. For all other calculations presented in this work, we used the latter scheme where charges were redistributed to all remaining sites in the classical region.

The tests on the redistribution scheme (Section 4.1) and EEF effect (Section 4.2 and Table S7†) were performed on a single snapshot. The tests on the size of the quantum region (Section 4.1) were performed on five different snapshots. Averaging over more structures and comparing to the large quantum region (Fig. 1c) is not feasible due to the size of the large quantum region in combination with the high computational cost of especially 3PA and 4PA calculations. Excitation energies and 1PA–4PA strengths of the  $\pi \rightarrow \pi^*$  transition were calculated for the medium quantum region as averages over 50 snapshots (Section 4.3).

### 3.4 Analysis of the data

The rotational averaging of the MPA transition moments **S** to obtain the MPA strengths  $\langle \delta^{\text{MPA}} \rangle$  was performed by the method described by Friese, Beerepoot and Ruud,<sup>88</sup> so that

$$\langle \delta^{1\text{PA}} \rangle = \frac{1}{3} \sum_a S_a \bar{S}_a, \quad (46)$$

$$\langle \delta^{2\text{PA}} \rangle = \frac{1}{15} \sum_{ab} (2S_{ab} \bar{S}_{ab} + S_{aa} \bar{S}_{bb}), \quad (47)$$

$$\langle \delta^{3\text{PA}} \rangle = \frac{1}{35} \sum_{abc} (2S_{abc} \bar{S}_{abc} + 3S_{aab} \bar{S}_{bcc}), \quad (48)$$

$$\langle \delta^{4\text{PA}} \rangle = \frac{1}{315} \sum_{abcd} (8S_{abcd} \bar{S}_{abcd} + 24S_{aabc} \bar{S}_{bcdd} + 3S_{aabb} \bar{S}_{ccdd}), \quad (49)$$





where the overbar indicates complex conjugation. For the SCF-based theories considered in this work, the transition moments are real-valued and thus equal to their complex conjugates. Rotationally averaged MPA strengths are given in the ESI† in atomic units, which for  $M$ -photon absorption are<sup>11</sup>

$$[\langle \delta^{\text{MPA}} \rangle] = a_0^{2M} \cdot E_h^{2(M-1)}, \quad (50)$$

where  $a_0$  and  $E_h$  are the atomic units for length and energy, respectively. In addition, the dimensionless oscillator strength  $f$  was calculated from the rotationally averaged 1PA strength  $\langle \delta^{1\text{PA}} \rangle$  in eqn (46) and the photon frequency  $\omega$ , as

$$f = 2\omega \langle \delta^{1\text{PA}} \rangle. \quad (51)$$

The 2PA cross section  $\sigma^{2\text{PA}}$  in GM units ( $1 \text{ GM} = 10^{-50} \text{ cm}^4 \text{ s photon}^{-1}$ ) was obtained from the rotationally averaged 2PA strength  $\langle \delta^{2\text{PA}} \rangle$  in eqn (47) as

$$\sigma^{2\text{PA}} = \frac{N\pi^3 \alpha a_0^5 \omega^2}{c} g(2\omega, \omega_0, \Gamma) \langle \delta^{2\text{PA}} \rangle, \quad (52)$$

where  $\alpha$  is the fine structure constant and  $c$  is the speed of light. The integer  $N$  was set to 4 to compare with single-beam experiments as discussed in ref. 89. The lineshape function  $g(2\omega, \omega_0, \Gamma)$  is here a Lorentzian broadening function with a half-width at half-maximum of  $\Gamma = 0.1 \text{ eV}$  ( $0.00367 E_h$ ) describing homogeneous broadening processes. When evaluated at the maximum of the peak ( $2\omega = \omega_0$ ), the Lorentzian broadening function reduces to a constant as

$$g(\omega_0, \omega_0, \Gamma) = \frac{1}{\pi\Gamma}. \quad (53)$$

We note that even though the value of 0.1 eV has been used in many works (discussed in ref. 89), there is no rigorous theoretical foundation for this value.

In relation to the test calculations regarding the size of the quantum region, the mean absolute percentage deviation (MAPD) is calculated for different sizes of the quantum region as an average over five snapshots as

$$\text{MAPD} = \frac{1}{5} \sum_{i=1}^5 \sqrt{\left( \frac{\langle \delta^{\text{MPA}} \rangle_i - \langle \delta^{\text{MPA}} \rangle_{i,\text{ref}}}{\langle \delta^{\text{MPA}} \rangle_{i,\text{ref}}} \right)^2} \cdot 100 \quad (54)$$

where  $i$  is the number of the snapshot and the large quantum region is used as a reference (Fig. 1c).

## 4 Results and discussion

### 4.1 Required size of the quantum region and redistribution scheme

We have tested different sizes of the quantum region in order to investigate the sensitivity of the results to the location of the quantum-classical border and to find the necessary minimum size of the quantum region needed to obtain reliable results. All numerical results are tabulated in the ESI.† The small and medium quantum regions (Fig. 1) differ only by the addition of two methyl groups in the latter. The computational time for the MPA calculations only increases very little when going from the

small to medium region. The large quantum region contains, in addition to the medium one, the complete Phe64 and Val68 residues (shown in red in Fig. 1). Since this leads to a large increase in the computational time (approximately a factor of two when going from medium to large), this quantum region is primarily meant as a reference to test against and not necessarily as a feasible choice for further work. The tests of the different sizes of the quantum region in the polarizable environment are therefore limited to five snapshots of the neutral and anionic GFP.

Tabulated results for excitation energies and MPA strengths are shown in Tables S1 and S2.† The differences in excitation energies are minimal between the different quantum regions, especially for the neutral chromophore. The differences do not exceed 0.03 eV (neutral) and 0.06 eV (anionic) for the small and 0.01 eV (neutral and anionic) for the medium quantum region when using the results on the large quantum region as the reference. The calculations on the neutral and anionic GFP are thus affected slightly differently by the size of the quantum region. We have previously shown that the PE model can accurately describe the influence of the immediate surroundings of the chromophore on the excitation energies by comparing CC2 calculations on cluster models to the corresponding PE-CC2 calculations (using the small quantum region in Fig. 1a).<sup>66</sup> Here, we have also tested different schemes for the redistribution of the embedding potential parameters from classical sites that are within 1.4 Å of one of the quantum-region atoms, *i.e.* those at the quantum-classical boundary (Tables S3 and S4†). The excitation energies are not much affected, with differences not exceeding 0.04 eV (neutral) and 0.05 eV (anionic) between different redistribution schemes. Comparison with ref. 61 suggests that these small differences in excitation energies cancel when averaging over a large number of snapshots. Indeed, the average excitation energy of the neutral GFP chromophore (based on 50 snapshots) is equal (3.51 eV) in this work (medium quantum region, redistribution of charges to all sites) and in ref. 61 (small quantum region, redistribution of all multipoles and polarizabilities to one site) with very similar standard deviations (0.037 and 0.038 eV, respectively). The average excitation energy of the anionic chromophore (based on 50 snapshots) is also similar in this work (3.01 eV) and in ref. 61 (3.00 eV) with similar standard deviations (0.035 and 0.034 eV, respectively). The insensitivity of the excitation energy to the size of the quantum region and the treatment of the quantum-classical boundary can be explained by the molecular orbitals (MOs) that dominate the transition. The  $\pi \rightarrow \pi^*$  excitation investigated here is dominated by a transition from the highest occupied molecular orbital (HOMO) to the lowest unoccupied molecular orbital (LUMO), where both MOs are located on the conjugated part of the chromophore. Enlarging the quantum region beyond a certain minimum size only modestly affects those MOs, making the excitation energy rather insensitive to the size of the quantum region. We conclude that it is unproblematic to use the small quantum region for the calculation of excitation energies, as we have done in previous work.<sup>61,66</sup>

It is interesting to consider the performance of the PE-DFT approach on less localized properties such as 2PA, 3PA and



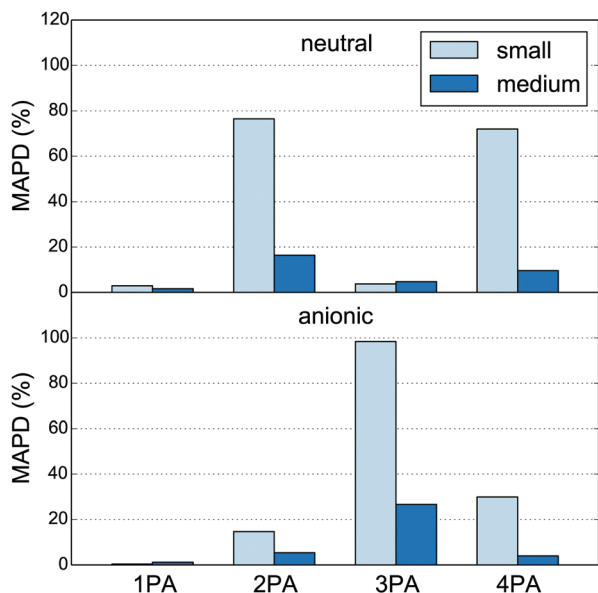


Fig. 2 Mean absolute percentage deviation (MAPD, eqn (54)) of MPA strengths calculated for the small and medium quantum regions (Fig. 1) relative to those for the large quantum region (see Tables S1 and S2† for the numbers). The charges of the classical sites within 1.4 Å of any atom in the quantum region have been redistributed to all other classical sites. The numbers are based on five snapshots of the neutral (top) and anionic (bottom) GFP chromophores in the polarizable environment of the protein.

4PA strengths. The absolute percentage deviations of the MPA strengths, relative to the large quantum region, are calculated as averages over five snapshots (MAPD; eqn (54)) and shown in Fig. 2. It is clear from this figure that 2PA, 3PA and 4PA strengths can be much more affected by the size of the quantum region, and thus are less localized, than the 1PA strength. Indeed, as was the case for the excitation energies, the 1PA strength is barely affected by the size of the quantum region, indicating that the small quantum region can also be used safely for the calculation of 1PA strengths in fluorescent proteins as done in earlier work.<sup>90</sup> For MPA strengths, the MAPD decreases significantly when the quantum region is enlarged from small to medium. The decrease is from 76% to 16% for 2PA and from 72% to 10% for 4PA in the neutral chromophore and from 98% to 27% for 3PA in the anionic chromophore. The sensitivity of the results to the size of the quantum region can be explained by the number and location of the MOs involved in the MPA processes. A large number of MOs on and around the conjugated system of the chromophore can be involved in a two-, three- or four-step process from the HOMO to the LUMO. The new MOs that appear as a result of extending the quantum region can thus affect the calculated MPA strengths. The results in Fig. 2 indicate that the additional MOs play a significant role in the MPA process with an even number of photons for the neutral chromophore and with an odd number of photons for the anionic chromophore. The 1PA process, however, is dominated by a one-step HOMO to LUMO transition where both MOs are located on the conjugated system. The addition of MOs on and around the conjugated system will thus not significantly affect the 1PA strength. The MOs that involve the peptide bonds

close to the quantum–classical boundary (see Fig. 1) are also modeled more realistically by the medium quantum region, where the  $C_{\alpha}$  atom is substituted by a methyl carbon rather than a hydrogen atom.

In this work we use the hydrogen link-atom approach in the separation of the quantum and classical regions. In this approach, where heavier atoms are replaced by hydrogens, it is necessary to consider how to treat overlapping atoms, *i.e.* classical atoms that have been replaced by hydrogens in the quantum region, in order to avoid double-counting. Furthermore, due to the close proximity of classical sites to the quantum link atom, there is a risk of overpolarization. The specific treatment of the quantum–classical border affects the polarization of both the quantum and the classical regions, mainly in the area around the border. The aim is to reproduce the electron density as close as possible to the quantum–classical border. While this is in principle possible, it is not necessarily feasible without some form of parametrization. Optimally, one would therefore increase the size of the quantum region until no effect from the specific choice of redistribution scheme is observed. However, since this option is limited by current algorithms and technology, we instead investigate the sensitivity of the MPA strengths with respect to simple redistribution schemes. Percentage deviations (PD) for the MPA strengths of the medium quantum region relative to the large quantum region are shown in Fig. 3 for redistribution of charges to the nearest one, two, three, or all other classical sites, while all other parameters are deleted. All numbers for the small, medium and large quantum regions are tabulated in Tables S3 and S4.† Errors for 1PA strengths do not

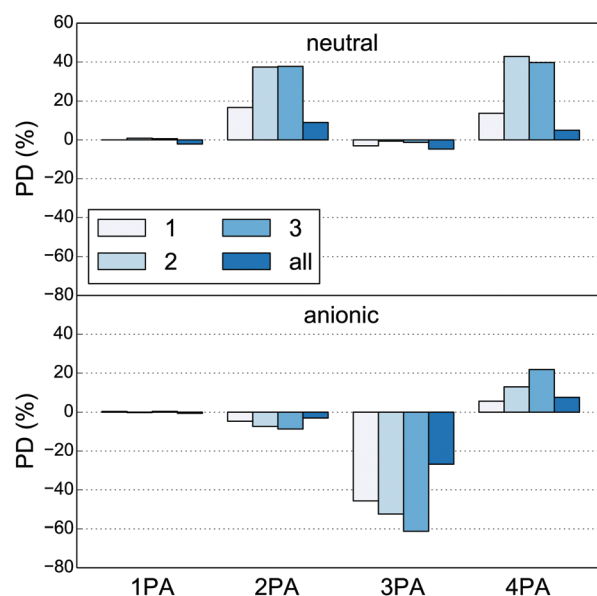


Fig. 3 Percentage deviation (PD) of MPA strengths calculated for the medium quantum region (Fig. 1b) relative to those calculated for the large quantum region (see Tables S3 and S4† for the numbers). The charges of the classical sites within 1.4 Å of any quantum-region atom have been redistributed to either one, two, three or all other classical sites. The numbers are based on one snapshot (#1 in the ES1†) of the neutral (top) and anionic (bottom) GFP chromophores.



exceed 3%, indicating that this property is rather insensitive to the quantum–classical border treatment, or, equivalently, that the size of the quantum regions are appropriate for this property. The MPA strengths, on the other hand, can be dramatically affected by the number of sites to which the charges are redistributed. Comparing the MPA strengths of the large and medium quantum regions (Tables S3 and S4<sup>†</sup>), we observe that the spread between the different redistribution schemes decreases, but even for the large quantum region there are substantial differences. This indicates that a larger quantum region is needed for quantitative calculations when using such simple redistribution schemes. Fig. 3 shows that the difference between the MPA strengths calculated using the medium and large quantum region is smallest on average when charges are redistributed to all other sites. The PDs are less than 10% for both the neutral and anionic chromophore except for the 3PA strength of the anionic chromophore where the PD is 27%, which is still significantly less than for the other redistribution schemes. We have therefore chosen this scheme for the remaining calculations presented in this work. We stress that redistribution and deletion of embedding potential parameters can potentially be avoided by using other schemes to treat the quantum–classical border, such as the frozen molecular orbital approach of Friesner and coworkers,<sup>91,92</sup> or the optimized effective atom-centered potentials by von Lilienfeld *et al.*,<sup>93,94</sup> both of which, however, require parametrization for different chemical species.

#### 4.2 Influence of the polarizable environment

Calculated excitation energies and 1PA to 4PA strengths are shown for five different snapshots of the neutral and anionic GFP chromophores in Tables S5 and S6<sup>†</sup> respectively, both in the absence and the presence of the protein environment. For the neutral chromophore, inclusion of the protein environment leads to a red shift (of 0.09 to 0.16 eV) in the  $\pi \rightarrow \pi^*$  excitation energy, as has also been observed in earlier work.<sup>61,64,66,95</sup> The excitation energy of the anionic chromophore is less affected, with changes ranging from a red shift of 0.01 eV to a blue shift of 0.06 eV between the different snapshots. The small shift in the excitation energy of the anionic chromophore can be explained by a cancellation of the blue shift due to electrostatic and ground-state polarization effects (static reaction field) and the red shift due to dynamic polarization effects (dynamic reaction field), as previously described<sup>95</sup> and apparent from the data in Table S7.<sup>†</sup>

Tables S5 and S6<sup>†</sup> also reveal that the MPA strengths generally decrease when adding the polarizable environment. In previous work that did not include the EEF effect, we have found an *increase* in the 1PA oscillator strengths in the different protonation states of GFP,<sup>64,90</sup> in DsRed<sup>96</sup> and in various other fluorescent proteins.<sup>90</sup> In addition, 2PA cross sections were found to increase when adding the polarizable environment to the neutral and anionic GFP<sup>64</sup> and DsRed<sup>96</sup> chromophores also when corrected for the dependence on the photon energy (see eqn (52)). It has been shown for DsRed that inclusion of the EEF effect, *i.e.* defining the properties with respect to the external field, leads to a decrease in the 1PA and 2PA strengths

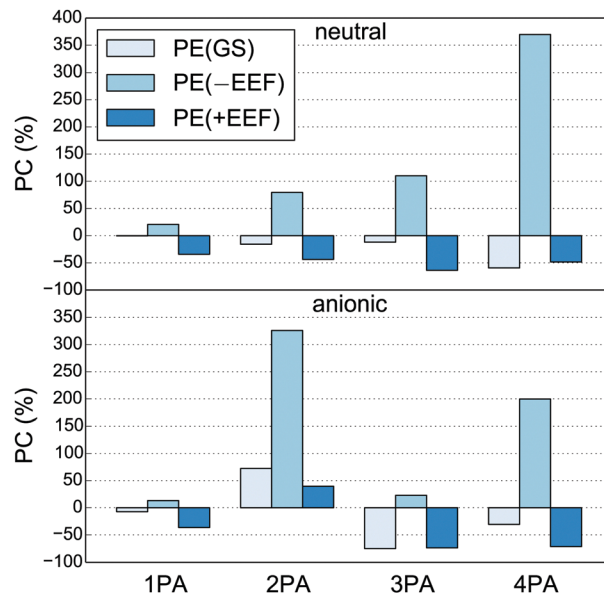


Fig. 4 Percentage change (PC) of MPA strengths for the medium quantum region calculated in the polarizable environment relative to the MPA strengths of the medium quantum region in isolation (see Table S7<sup>†</sup> for the numbers). The MPA strengths are calculated with only ground-state polarization [PE(GS)], with full polarization and without the EEF effect [PE(-EEF)], and with full polarization and with the EEF effect [PE(+EEF)]. The numbers are based on one snapshot (#1 in the ESI<sup>†</sup>) of the neutral (top) and anionic (bottom) GFP chromophores.

compared to the chromophore in isolation, and to a considerably improved agreement with supermolecular calculations.<sup>26</sup> The percentage change of the MPA strengths relative to the isolated quantum region are shown in Fig. 4 (see also Table S7<sup>†</sup>). Indeed, we see here that neglecting the EEF effect leads to an increase of MPA strengths in all cases and thus a qualitatively wrong change with respect to the isolated chromophore. In conclusion, we find that the EEF effect is important to obtain both qualitative and quantitative correct results, and in particular for higher-order MPA strengths.

#### 4.3 Configurational sampling

Excitation energies and 1PA–4PA strengths are shown in Table 1 as averages over 50 snapshots from a classical molecular dynamics simulation (using medium quantum region and redistribution of charges to all sites). Standard deviations (shown in the same table) are roughly of the same order of magnitude as the strengths themselves for 2PA–4PA, emphasizing the importance of configurational sampling for this molecular system. The 1PA strengths,

Table 1 Excitation energies (in eV), one-, two-, three and four-photon absorption strengths (in atomic units), averaged over 50 snapshots. Standard deviations are shown in parentheses

	Neutral	Anionic
$E_{\text{exc}}$	3.51 (0.04)	3.01 (0.04)
1PA	1.84 (0.13)	3.23 (0.12)
2PA	405 (238)	1160 (398)
3PA ( $10^4$ )	838 (111)	85 (94)
4PA ( $10^9$ )	18 (15)	64 (18)



on the other hand, are much less affected by the sampling, with standard deviations that are more than an order of magnitude lower than the strength itself. We note that the spectral broadening of the excitation energies is decreased by approximately a factor three as a result of the geometry optimization of the chromophore,<sup>61</sup> which will also have a similar effect on the MPA strengths.

#### 4.4 Limitations

The computational protocol followed here does not allow for a quantitative comparison with available experimental data for several reasons. First and foremost, current exchange–correlation kernels used in time-dependent DFT do not appear to be able to predict quantitatively accurate MPA strengths. Indeed, it has been shown that CAM-B3LYP underestimates the 2PA strength of the GFP chromophore by about a factor of two compared to EOM-CCSD.<sup>89</sup> Part of the problem can be related to the unreliable prediction of the excited-state dipole moment of  $\pi \rightarrow \pi^*$  excitations by commonly employed exchange–correlation functionals,<sup>97</sup> which affects the MPA strength for noncentrosymmetric molecules through difference dipole moments. In addition to difference dipole moments, transition dipole moments between excited states also play a role in MPA, adding to the uncertainty of whether current DFT functionals are accurate enough for the calculation of absolute MPA strengths. There is a clear need for benchmarking DFT MPA strengths, which, however, is limited by the lack of accurate and efficient correlated methods for calculating MPA strengths. Secondly, reliable MPA experimental data are needed for a reliable comparison with calculated data. Experimental 2PA cross sections of fluorescent proteins show a large variation between different experimental studies, as discussed in ref. 98. Comparison between calculated and measured values also places demands on the presentation of the experimental data. Ideally, an MPA spectrum should be available, or the reported cross sections should at least correspond to the absorption maximum. This is not the case for available experimental 3PA and 4PA cross sections on GFP.<sup>47</sup> Moreover, enough details about the experimental setup should be presented to allow for a correct comparison with calculations. In fact, comparison with different experimental setups requires the use of different factors to convert MPA strengths (in atomic units) to cross sections (in macroscopic units), as discussed for 2PA in ref. 89. Therefore, thorough knowledge of both the experimental and computational details is needed for a correct comparison of measured and calculated results. Thirdly, we have here calculated energies and absorption strengths associated with vertical excitations, assuming that the one-photon and multiphoton absorption strengths are resulting from exactly the same (vertical) electronic excitation. Non-Condon effects, however, have been shown to be significant in 2PA and in particular in shifts between 1PA and 2PA spectra.<sup>99,100</sup> Deviation from the Franck–Condon behavior is thus likely to play a role in both the location and the amplitude of the peaks in the calculated MPA spectra and is therefore important to consider if comparison with experimental spectra is attempted.

The problematic comparison is illustrated by the large discrepancy between the calculated and experimental 2PA cross section for the neutral chromophore. The former is 1.8 GM,

using eqn (52) and the average excitation energy and 2PA strength from Table 1 (see Section 3.4 for details on the conversion). This is an order of magnitude smaller than the experimentally measured cross sections reported in ref. 47 and 98. For comparison, we have previously compared experimental and calculated excitation energies using the same multiscale approach. Relative trends between different fluorescent proteins were reproduced even without conformational averaging. However, the calculations overestimated the experimental excitation energies by almost 0.4 eV for neutral and anionic GFP, which we ascribed to imperfections in the used quantum method rather than in the PE model.<sup>61</sup> We also note that the  $\pi \rightarrow \pi^*$  excitation, which is a HOMO to LUMO transition with both MOs localized on the conjugated system of the chromophore, is not necessarily the one with the highest MPA strength. This has been shown before for 2PA by experiments<sup>98</sup> and calculations both in isolation<sup>101</sup> and in a protein environment.<sup>64</sup> The same has been observed in the present work.

## 5 Conclusions and outlook

We have extended an open-ended density-matrix-based response theory formulation and its corresponding implementation to include a multiscale description of molecular environment effects modeled by the polarizable embedding model, which enables calculations of electric response and multiphoton absorption properties to any order for molecules embedded in realistic molecular environments. The present implementation is applicable to response properties involving electric dipole and higher-order multipole perturbations. To demonstrate the implementation, we have calculated one-, two-, three-, and four-photon absorption strengths of GFP, making this work the first to explore three- and four-photon absorption cross sections of a chromophore in an explicit (bio)molecular environment. The developments presented here are therefore particularly useful in the development of chromophores for multiphoton microscopy.

We have examined several practical aspects that are important to consider in multiscale modeling applications: convergence with respect to the size of the quantum region, treatment of the quantum–classical border, and the importance of configurational sampling. Concerning the size of the quantum region, we have found that the small quantum region shown in Fig. 1a is appropriate for calculating the excitation energy and 1PA strength of the (local)  $\pi \rightarrow \pi^*$  transition in GFP. The MPA strengths, however, are much more sensitive to the size of the quantum region, as well as to different ways of treating the quantum–classical border. We have used the hydrogen link-atom approach at the quantum–classical border, which means there are parameters on classical sites that are in close proximity to the quantum link atom that need to be taken care of to avoid overpolarization. Here we have investigated simple redistribution schemes where charges that are closer than a specified threshold are redistributed to other classical sites. We found that for MPA strengths it is necessary to either use large quantum regions or, alternatively, to improve the treatment





of the quantum–classical border, although the latter was not investigated here. Furthermore, configurational sampling was found to be very important for the investigated MPA strengths, where the standard deviations are on the same order of magnitude as the averages.

Finally, we have investigated how different approximations of the polarizable component of the embedding potential affect the MPA strengths. The most important observation is that including dynamic polarization effects without adding the effective external field effect can lead to a significant overestimation of the MPA strengths defined with respect to the external field strength.

In future developments of this methodology, we will seek to include environment effects for other categories of properties such as those involving geometric perturbation of the nuclei of the quantum system. These properties will enable the inclusion of environment effects in spectroscopic phenomena that involve molecular vibrations such as infrared and Raman spectroscopy and variants thereof. Further extensions to cover properties that involve magnetic perturbations, which will make it possible to predict and interpret NMR spectra, are also planned. In addition, work is underway to improve the embedding methodology. Specifically, we are extending the coupling to include the polarizable density embedding model which features improved short-range electrostatics and also models nonelectrostatic repulsion effects, *i.e.* exchange repulsion/Pauli repulsion.<sup>102</sup>

## Acknowledgements

The authors thank Radovan Bast and Daniel H. Friese (University of Tromsø—The Arctic University of Norway) for technical support. A. H. S., M. T. P. B., M. R. and K. R. acknowledge support from the Research Council of Norway through a Centre of Excellence Grant (Grant No. 179568/V30) and from the European Research Council through a Starting Grant (Grant No. 279619). A. H. S. acknowledges financial support from Tromsø Forskningsstiftelse. N. H. L. acknowledges financial support from the Carlsberg Foundation (Grant No. CF15-0792). J. K. and J. M. H. O. acknowledge financial support from the Danish Council for Independent Research (DFR) through the Sapere Aude research career program (Grant no. DFF – 0602-02122B, DFF – 1323-00744, and DFF – 1325-00091). J. K. acknowledges the VILLUM Foundation for support. Computation/simulation for the work described in this paper was supported by the DeIC National HPC Center (SDU) and by the Norwegian Supercomputer Program (Grant No. NN4654K).

## References

- 1 E. B. Wilson, Jr., J. C. Decius and P. C. Cross, *Molecular Vibrations: The Theory of Infrared and Raman Vibrational Spectra*, Dover publications Inc., New York, 1980.
- 2 L. D. Barron, *Molecular Light Scattering and Optical Activity*, Cambridge University Press, Cambridge, United Kingdom, 2nd edn, 2004.
- 3 V. Barone, *J. Chem. Phys.*, 2005, **122**, 014108.
- 4 C. Puzzarini, J. F. Stanton and J. Gauss, *Int. Rev. Phys. Chem.*, 2010, **29**, 273–367.
- 5 R. Bast, U. Ekström, B. Gao, T. Helgaker, K. Ruud and A. J. Thorvaldsen, *Phys. Chem. Chem. Phys.*, 2011, **13**, 2627–2651.
- 6 T. Helgaker, S. Coriani, P. Jørgensen, K. Kristensen, J. Olsen and K. Ruud, *Chem. Rev.*, 2012, **112**, 543–631.
- 7 J. Olsen and P. Jørgensen, *J. Chem. Phys.*, 1985, **82**, 3235–3264.
- 8 K. Sasagane, F. Aiga and R. Itoh, *J. Chem. Phys.*, 1993, **99**, 3738–3778.
- 9 A. J. Thorvaldsen, K. Ruud, K. Kristensen, P. Jørgensen and S. Coriani, *J. Chem. Phys.*, 2008, **129**, 214108.
- 10 M. Ringholm, D. Jonsson and K. Ruud, *J. Comput. Chem.*, 2014, **35**, 622–633.
- 11 D. H. Friese, M. T. P. Beerepoot, M. Ringholm and K. Ruud, *J. Chem. Theory Comput.*, 2015, **11**, 1129–1144.
- 12 E. G. McRae, *J. Phys. Chem.*, 1957, **61**, 562–572.
- 13 J. Kongsted and B. Mennucci, *J. Phys. Chem. A*, 2007, **111**, 9890–9900.
- 14 *Solvation Effects on Molecules and Biomolecules*, ed. S. Canuto, Springer, Netherlands, 2008.
- 15 K. O. Sylvester-Hvid, K. V. Mikkelsen, P. Norman, D. Jonsson and H. Ågren, *J. Phys. Chem. A*, 2004, **108**, 8961–8965.
- 16 J. Neugebauer, *Angew. Chem., Int. Ed.*, 2007, **46**, 7738–7740.
- 17 C. Cappelli and B. Mennucci, *J. Phys. Chem. B*, 2008, **112**, 3441–3450.
- 18 A. S. P. Gomes and C. R. Jacob, *Annu. Rep. Prog. Chem., Sect. C: Phys. Chem.*, 2012, **108**, 222–277.
- 19 J. Tomasi, B. Mennucci and R. Cammi, *Chem. Rev.*, 2005, **105**, 2999–3093.
- 20 A. Warshel and M. Levitt, *J. Mol. Biol.*, 1976, **103**, 227–249.
- 21 H. M. Senn and W. Thiel, *Angew. Chem., Int. Ed.*, 2009, **48**, 1198–1229.
- 22 J. M. Olsen, K. Aidas and J. Kongsted, *J. Chem. Theory Comput.*, 2010, **6**, 3721–3734.
- 23 J. M. H. Olsen and J. Kongsted, *Adv. Quantum Chem.*, 2011, **61**, 107–143.
- 24 N. H. List, J. M. H. Olsen and J. Kongsted, *Phys. Chem. Chem. Phys.*, 2016, **18**, 20234–20250.
- 25 K. Sneskov, T. Schwabe, O. Christiansen and J. Kongsted, *Phys. Chem. Chem. Phys.*, 2011, **13**, 18551–18560.
- 26 N. H. List, H. J. Aa. Jensen and J. Kongsted, *Phys. Chem. Chem. Phys.*, 2016, **18**, 10070–10080.
- 27 M. A. Thompson, *J. Phys. Chem.*, 1996, **100**, 14492–14507.
- 28 L. Jensen, P. Th. van Duijnen and J. G. Snijders, *J. Chem. Phys.*, 2003, **118**, 514–521.
- 29 S. Yoo, F. Zahariev, S. Sok and M. S. Gordon, *J. Chem. Phys.*, 2008, **129**, 144112.
- 30 P. Söderhjelm, C. Husberg, A. Strambi, M. Olivucci and U. Ryde, *J. Chem. Theory Comput.*, 2009, **5**, 649–658.
- 31 C. Curutchet, A. Muñoz-Losa, S. Monti, J. Kongsted, G. D. Scholes and B. Mennucci, *J. Chem. Theory Comput.*, 2009, **5**, 1838–1848.
- 32 F. Lipparini, C. Cappelli and V. Barone, *J. Chem. Theory Comput.*, 2012, **8**, 4153–4165.





- 33 T. Schwabe, J. M. H. Olsen, K. Sneskov, J. Kongsted and O. Christiansen, *J. Chem. Theory Comput.*, 2011, **7**, 2209–2217.
- 34 M. T. P. Beerepoot, A. H. Steindal, N. H. List, J. Kongsted and J. M. H. Olsen, *J. Chem. Theory Comput.*, 2016, **12**, 1684–1695.
- 35 J. M. H. Olsen, N. H. List, K. Kristensen and J. Kongsted, *J. Chem. Theory Comput.*, 2015, **11**, 1832–1842.
- 36 Q. Zheng, H. Zhu, S.-C. Chen, C. Tang, E. Ma and X. Chen, *Nat. Photonics*, 2013, **7**, 234–239.
- 37 D. A. Parthenopoulos and P. M. Rentzepis, *Science*, 1989, **245**, 843–845.
- 38 A. S. Dvornikov, E. P. Walker and P. M. Rentzepis, *J. Phys. Chem. A*, 2009, **113**, 13633–13644.
- 39 A. V. Kachynski, A. Pliss, A. N. Kuzmin, T. Y. Ohulchanskyy, A. Baev, J. Qu and P. N. Prasad, *Nat. Photonics*, 2014, **8**, 455–461.
- 40 J. Croissant, M. Maynadier, A. Gallud, H. P. N'Dongo, J. L. Nyalosaso, G. Derrien, C. Charnay, J.-O. Durand, L. Raehm, F. Serein-Spirau, N. Cheminet, T. Jarrosson, O. Mongin, M. Blanchard-Desce, M. Gary-Bobo, M. Garcia, J. Lu, F. Tamanoi, D. Tarn, T. M. Guardado-Alvarez and J. I. Zink, *Angew. Chem., Int. Ed.*, 2013, **52**, 13813–13817.
- 41 W. Denk, J. H. Strickler and W. W. Webb, *Science*, 1990, **248**, 73–76.
- 42 S. Maiti, J. B. Shear, R. M. Williams, W. R. Zipfel and W. W. Webb, *Science*, 1997, **275**, 530–532.
- 43 C. Xu, W. Zipfel, J. B. Shear, R. M. Williams and W. W. Webb, *Proc. Natl. Acad. Sci. U. S. A.*, 1996, **93**, 10763–10768.
- 44 W. R. Zipfel, R. M. Williams and W. W. Webb, *Nat. Biotechnol.*, 2003, **21**, 1369–1377.
- 45 R. Y. Tsien, *Annu. Rev. Biochem.*, 1998, **67**, 509–544.
- 46 M. Chalfie, Y. Tu, G. Euskirchen, W. W. Ward and D. C. Prasher, *Science*, 1994, **263**, 802–805.
- 47 L.-C. Cheng, N. G. Horton, K. Wang, S.-J. Chen and C. Xu, *Biomed. Opt. Express*, 2014, **5**, 3427–3433.
- 48 M. Drobizhev, C. Stoltzfus, I. Topol, J. Collins, G. Wicks, A. Mikhaylov, L. Barnett, T. E. Hughes and A. Rebane, *J. Phys. Chem. B*, 2014, **118**, 9167–9179.
- 49 M. A. Salem, M. Gedik and A. Brown, Two Photon Absorption in Biological Molecules, in *Handbook of Computational Chemistry*, ed. J. Leszczynski *et al.*, Springer, Dordrecht, 2015, DOI: 10.1007/978-94-007-6169-8\_47-1.
- 50 M. Drobizhev, S. Tillo, N. S. Makarov, T. E. Hughes and A. Rebane, *J. Phys. Chem. B*, 2009, **113**, 855–859.
- 51 M. Drobizhev, S. Tillo, N. S. Makarov, T. E. Hughes and A. Rebane, *J. Phys. Chem. B*, 2009, **113**, 12860–12864.
- 52 D. W. Zhang and J. Z. H. Zhang, *J. Chem. Phys.*, 2003, **119**, 3599–3605.
- 53 P. Söderhjelm and U. Ryde, *J. Phys. Chem. A*, 2009, **113**, 617–627.
- 54 X. Saint Raymond, *Elementary Introduction to the Theory of Pseudodifferential Operators*, CRC Press, 1991, vol. 3.
- 55 J. Applequist, J. R. Carl and K.-K. Fung, *J. Am. Chem. Soc.*, 1972, **94**, 2952–2960.
- 56 K. Kristensen, P. Jørgensen, A. J. Thorvaldsen and T. Helgaker, *J. Chem. Phys.*, 2008, **129**, 214103.
- 57 R. Wortmann and D. M. Bishop, *J. Chem. Phys.*, 1998, **108**, 1001–1007.
- 58 R. Cammi, B. Mennucci and J. Tomasi, *J. Phys. Chem. A*, 1998, **102**, 870–875.
- 59 L. Ferrighi, L. Frediani, C. Cappelli, P. Salek, H. Ågren, T. Helgaker and K. Ruud, *Chem. Phys. Lett.*, 2006, **425**, 267–272.
- 60 S. Pipolo, S. Corni and R. Cammi, *J. Chem. Phys.*, 2014, **140**, 164114.
- 61 M. T. P. Beerepoot, A. H. Steindal, J. Kongsted, B. O. Brandsdal, L. Frediani, K. Ruud and J. M. H. Olsen, *Phys. Chem. Chem. Phys.*, 2013, **15**, 4735–4743.
- 62 N. Reuter, H. Lin and W. Thiel, *J. Phys. Chem. B*, 2002, **106**, 6310–6321.
- 63 F. Yang, L. G. Moss and G. N. Phillips Jr., *Nat. Biotechnol.*, 1996, **14**, 1246–1251.
- 64 A. H. Steindal, J. M. H. Olsen, K. Ruud, L. Frediani and J. Kongsted, *Phys. Chem. Chem. Phys.*, 2012, **14**, 5440–5451.
- 65 M. T. P. Beerepoot, A. H. Steindal, K. Ruud, J. M. H. Olsen and J. Kongsted, *Comput. Theor. Chem.*, 2014, **1040–1041**, 304–311.
- 66 T. Schwabe, M. T. P. Beerepoot, J. M. H. Olsen and J. Kongsted, *Phys. Chem. Chem. Phys.*, 2015, **17**, 2582–2588.
- 67 V. R. I. Kaila, R. Send and D. Sundholm, *Phys. Chem. Chem. Phys.*, 2013, **15**, 4491–4495.
- 68 L. Gagliardi, R. Lindh and G. Karlström, *J. Chem. Phys.*, 2004, **121**, 4494–4500.
- 69 G. Karlström, R. Lindh, P.-Å. Malmqvist, B. O. Roos, U. Ryde, V. Veryazov, P.-O. Widmark, M. Cossi, B. Schimmelpfennig, P. Neogady and L. Seijo, *Comput. Mater. Sci.*, 2003, **28**, 222–239.
- 70 F. Aquilante, L. De Vico, N. Ferré, G. Ghigo, P.-Å. Malmqvist, P. Neogrády, T. B. Pedersen, M. Pitoňák, M. Reiher, B. O. Roos, L. Serrano-Andrés, M. Urban, V. Veryazov and R. Lindh, *J. Comput. Chem.*, 2010, **31**, 224–247.
- 71 S. H. Vosko, L. Wilk and M. Nusair, *Can. J. Phys.*, 1980, **58**, 1200–1211.
- 72 C. Lee, W. Yang and R. G. Parr, *Phys. Rev. B*, 1988, **37**, 785–789.
- 73 A. D. Becke, *J. Chem. Phys.*, 1993, **98**, 5648–5652.
- 74 P. J. Stephens, F. J. Devlin, C. F. Chabalowski and M. J. Frisch, *J. Phys. Chem.*, 1994, **98**, 11623–11627.
- 75 W. J. Hehre, R. Ditchfield and J. A. Pople, *J. Chem. Phys.*, 1972, **56**, 2257–2261.
- 76 T. Clark, J. Chandrasekhar, G. W. Spitznagel and P. Von Ragué Schleyer, *J. Comput. Chem.*, 1983, **4**, 294–301.
- 77 M. M. Francl, W. J. Pietro, W. J. Hehre, J. S. Binkley, M. S. Gordon, D. J. DeFrees and J. A. Pople, *J. Chem. Phys.*, 1982, **77**, 3654–3665.
- 78 Dalton, a molecular electronic structure program, Release Dalton2015, see <http://daltonprogram.org/>.
- 79 K. Aidas, C. Angeli, K. L. Bak, V. Bakken, R. Bast, L. Boman, O. Christiansen, R. Cimiraglia, S. Coriani, P. Dahle, E. K. Dalskov, U. Ekström, T. Enevoldsen, J. J. Eriksen, P. Ettenhuber, B. Fernández, L. Ferrighi, H. Fliegl, L. Frediani, K. Hald, A. Halkier, C. Hättig, H. Heiberg, T. Helgaker, A. C. Hennum, H. Hettema, E. Hjertenæs,



- S. Høst, I.-M. Høyvik, M. F. Iozzi, B. Jansík, H. J. Aa. Jensen, D. Jonsson, P. Jørgensen, J. Kauczor, S. Kirpekar, T. Kjærgaard, W. Klopper, S. Knecht, R. Kobayashi, H. Koch, J. Kongsted, A. Krapp, K. Kristensen, A. Ligabue, O. B. Lutnæs, J. I. Melo, K. V. Mikkelsen, R. H. Myhre, C. Neiss, C. B. Nielsen, P. Norman, J. Olsen, J. M. H. Olsen, A. Osted, M. J. Packer, F. Pawłowski, T. B. Pedersen, P. F. Provasi, S. Reine, Z. Rinkevicius, T. A. Ruden, K. Ruud, V. V. Rybkin, P. Sałek, C. C. M. Samson, A. S. de Merás, T. Saue, S. P. A. Sauer, B. Schimmelpfennig, K. Sneskov, A. H. Steindal, K. O. Sylvester-Hvid, P. R. Taylor, A. M. Teale, E. I. Tellgren, D. P. Tew, A. J. Thorvaldsen, L. Thøgersen, O. Vahtras, M. A. Watson, D. J. D. Wilson, M. Ziolkowski and H. Ågren, *WIREs Comput. Mol. Sci.*, 2014, **4**, 269–284.
- 80 The PE library developers, *PElib: The Polarizable Embedding library (development version)*, 2015, <http://gitlab.com/pe-software/pelib-public>.
- 81 B. Gao, *Gen1Int (version 0.2.1)*, 2012, <http://gitlab.com/bingao/gen1int>.
- 82 B. Gao, A. J. Thorvaldsen and K. Ruud, *Int. J. Quantum Chem.*, 2011, **111**, 858–872.
- 83 R. Bast, *XCint library*, 2016, <http://dftlibs.org/xcint/>.
- 84 U. Ekström, L. Visscher, R. Bast, A. J. Thorvaldsen and K. Ruud, *J. Chem. Theory Comput.*, 2010, **6**, 1971–1980.
- 85 T. Yanai, D. P. Tew and N. C. Handy, *Chem. Phys. Lett.*, 2004, **393**, 51–57.
- 86 M. J. G. Peach, P. Benfield, T. Helgaker and D. J. Tozer, *J. Chem. Phys.*, 2008, **128**, 044118.
- 87 N. H. List, J. M. Olsen, T. Rocha-Rinza, O. Christiansen and J. Kongsted, *Int. J. Quantum Chem.*, 2012, **112**, 789–800.
- 88 D. H. Friese, M. T. P. Beerepoot and K. Ruud, *J. Chem. Phys.*, 2014, **141**, 204103.
- 89 M. T. P. Beerepoot, D. H. Friese, N. H. List, J. Kongsted and K. Ruud, *Phys. Chem. Chem. Phys.*, 2015, **17**, 19306–19314.
- 90 A. Pikulska, A. H. Steindal, M. T. P. Beerepoot and M. Pecul, *J. Phys. Chem. B*, 2015, **119**, 3377–3386.
- 91 D. M. Philipp and R. A. Friesner, *J. Comput. Chem.*, 1999, **20**, 1468–1494.
- 92 R. B. Murphy, D. M. Philipp and R. A. Friesner, *J. Comput. Chem.*, 2000, **21**, 1442–1457.
- 93 O. A. von Lilienfeld, I. Tavernelli, U. Rothlisberger and D. Sebastiani, *Phys. Rev. Lett.*, 2004, **93**, 153004.
- 94 O. A. von Lilienfeld, I. Tavernelli, U. Rothlisberger and D. Sebastiani, *J. Chem. Phys.*, 2005, **122**, 014113.
- 95 C. Daday, C. Curutchet, A. Sinicropi, B. Mennucci and C. Filippi, *J. Chem. Theory Comput.*, 2015, **11**, 4825–4839.
- 96 N. H. List, J. M. H. Olsen, H. J. Aa. Jensen, A. H. Steindal and J. Kongsted, *J. Phys. Chem. Lett.*, 2012, **3**, 3513–3521.
- 97 J. Bednarska, A. Roztoczyńska, W. Bartkowiak and R. Zaleśny, *Chem. Phys. Lett.*, 2013, **584**, 58–62.
- 98 M. Drobizhev, N. S. Makarov, S. E. Tillo, T. E. Hughes and A. Rebane, *Nat. Methods*, 2011, **8**, 393–399.
- 99 E. Kamarchik and A. I. Krylov, *J. Phys. Chem. Lett.*, 2011, **2**, 488–492.
- 100 N. Lin, Y. Luo, K. Ruud, X. Zhao, F. Santoro and A. Rizzo, *ChemPhysChem*, 2011, **12**, 3392–3403.
- 101 R. Nifosì and Y. Luo, *J. Phys. Chem. B*, 2007, **111**, 14043–14050.
- 102 J. M. H. Olsen, C. Steinmann, K. Ruud and J. Kongsted, *J. Phys. Chem. A*, 2015, **119**, 5344–5355.

