

# SUPPORTING INFORMATION

## Highly fluorescent benzofuran derivatives of the GFP chromophore

Mikkel Andreas Christensen,<sup>a</sup> Karsten Jennum,<sup>a</sup> Peter Bæch Abrahamsen,<sup>a</sup> Eduardo Antonio Della Pia,<sup>a</sup> Kasper Lincke,<sup>a</sup> Søren Lindbæk Broman,<sup>a</sup> David Bo Nygaard,<sup>a</sup> Andrew D. Bond<sup>b</sup> and Mogens Brøndsted Nielsen\*<sup>a</sup>

<sup>a)</sup> *Department of Chemistry, University of Copenhagen, Universitetsparken 5, DK-2100 Copenhagen Ø, Denmark. E-mail: mbn@kiku.dk*

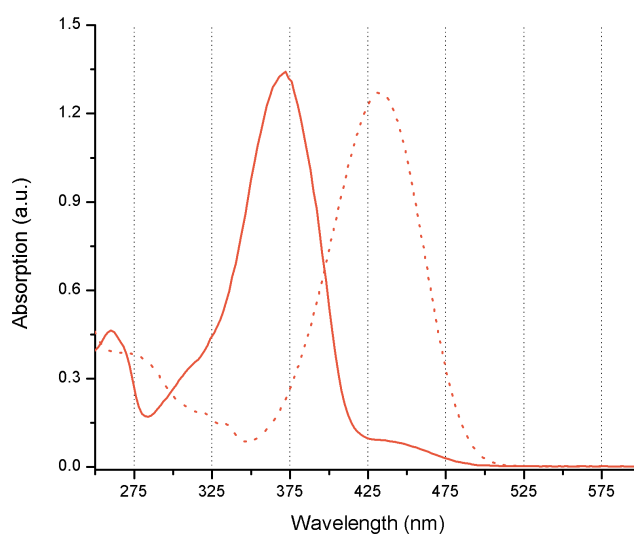
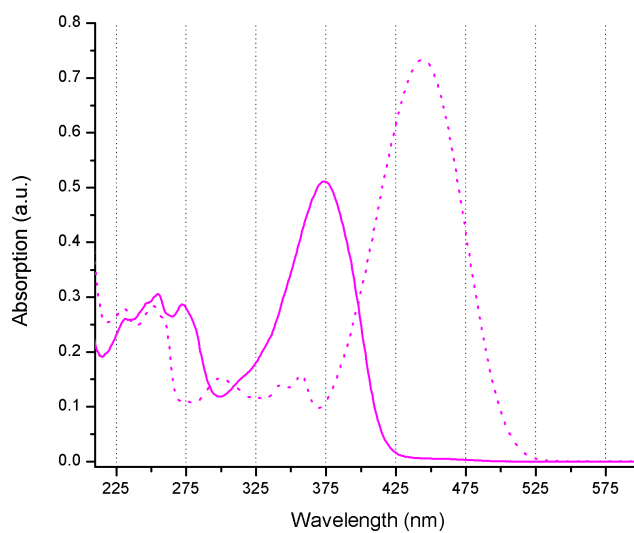
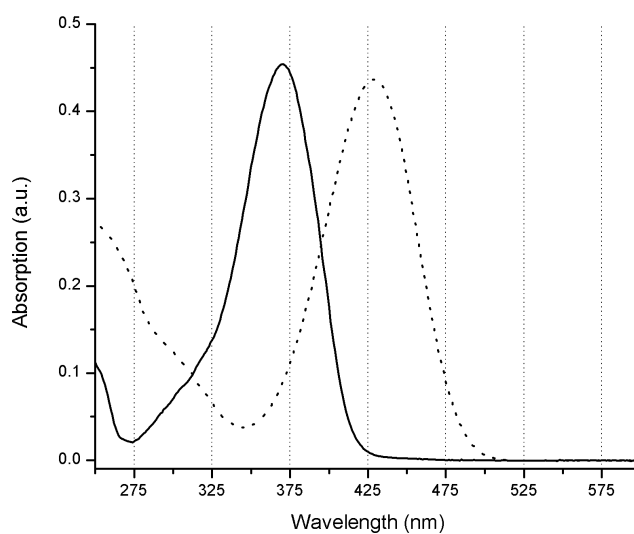
<sup>b)</sup> *Institute of Physics, Chemistry and Pharmacy, University of Southern Denmark, DK-5230 Odense M, Denmark.*

**Page 2: Spectroscopic Measurements**

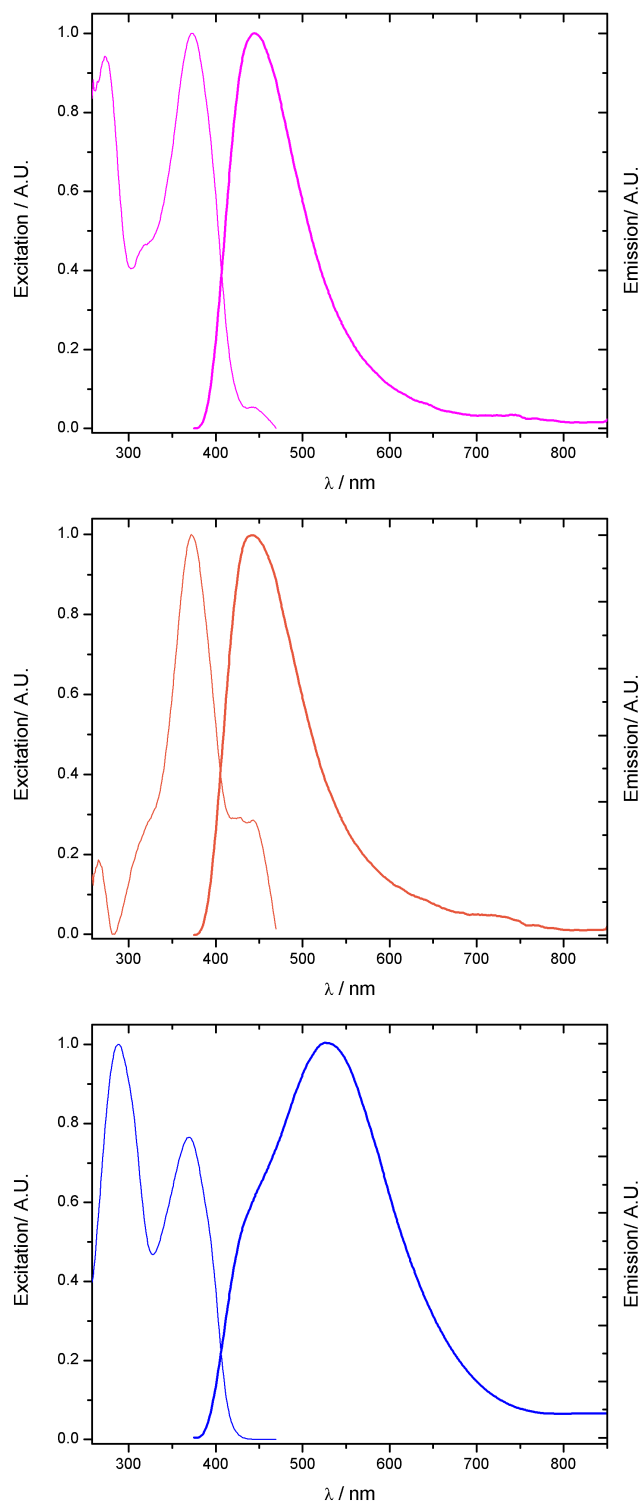
**Page 5: NMR Spectra**

**Page 27: IR Spectra**

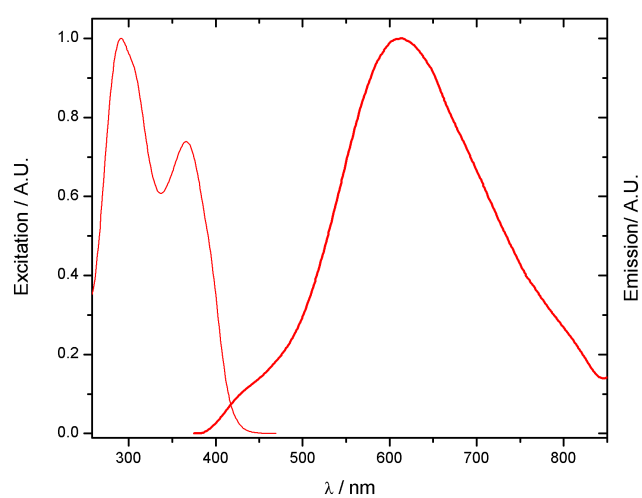
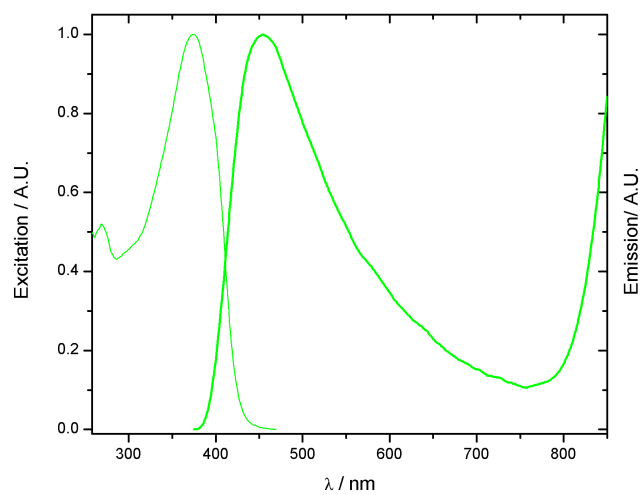
## Spectroscopic Measurements



Absorption spectra of GFPc derivatives (**1** top, **3** center, and **5** bottom) in methanol (solid line) and plus 0.5 M NaOMe in methanol. The spectra were recorded at room temperature.



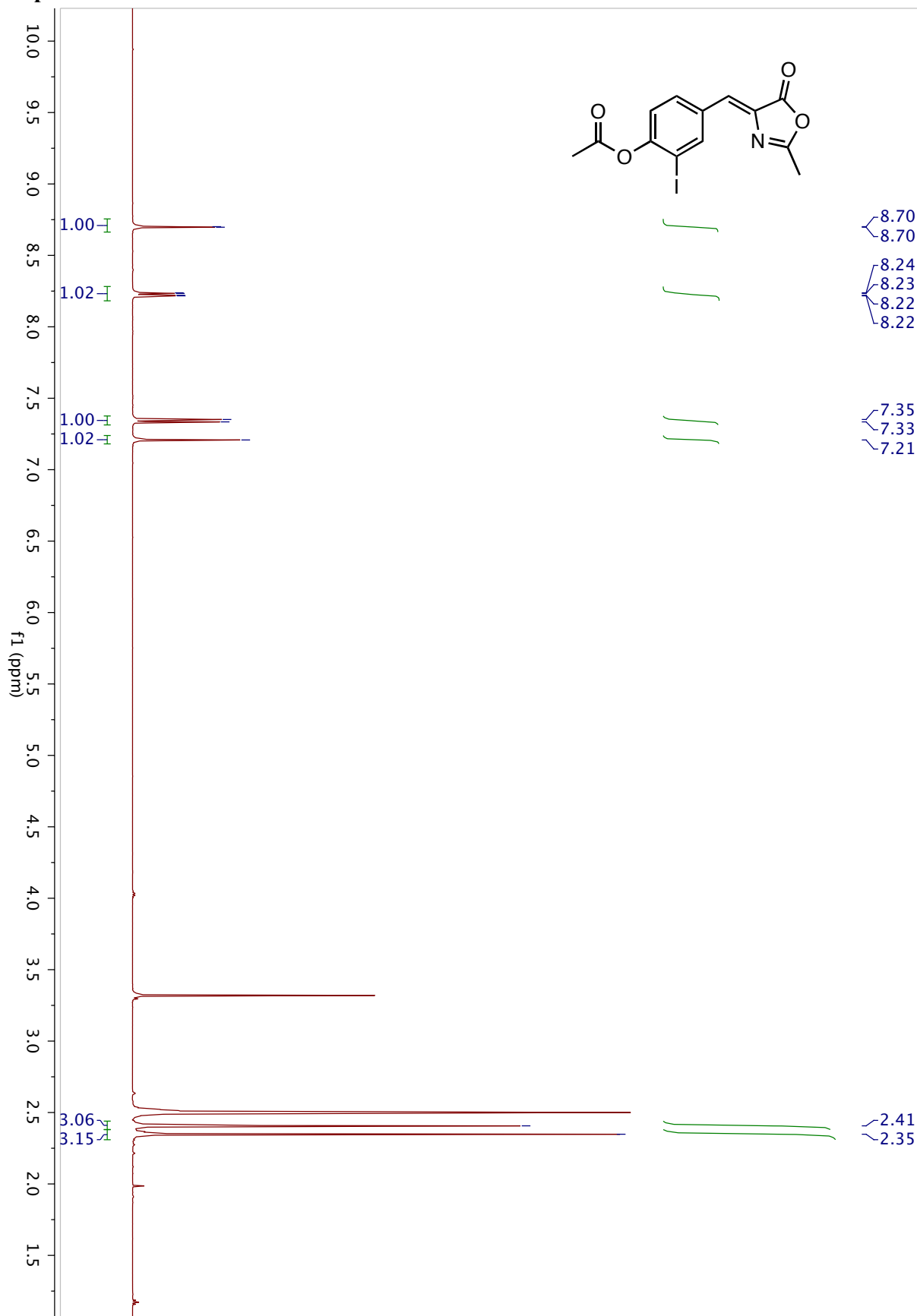
Room-temperature excitation (light line) and emission spectra (bold line) of the compounds **3** ( $\lambda_{em} = 445$  nm,  $\lambda_{ex} = 365$  nm), **5** ( $\lambda_{em} = 441$  nm,  $\lambda_{ex} = 365$  nm), and **13** ( $\lambda_{em} = 525$  nm,  $\lambda_{ex} = 365$  nm). The excitation and emission spectra were normalized to the same maximum amplitude.

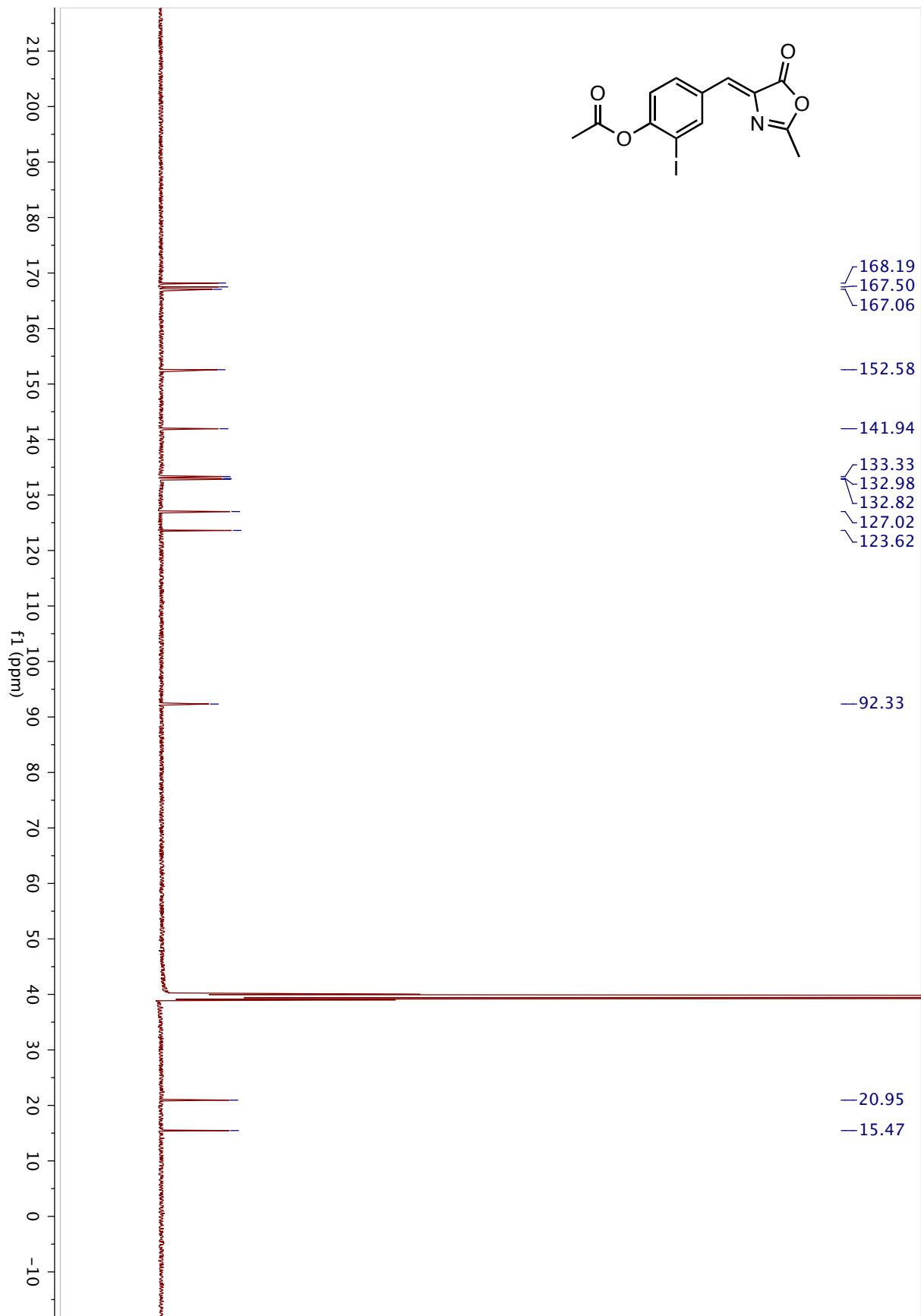


Room-temperature excitation (light line) and emission spectra (bold line) of the compounds **14** ( $\lambda_{\text{em}} = 454 \text{ nm}$ ,  $\lambda_{\text{ex}} = 365 \text{ nm}$ ) and **15** ( $\lambda_{\text{em}} = 612 \text{ nm}$ ,  $\lambda_{\text{ex}} = 365 \text{ nm}$ ). The excitation and emission spectra were normalized to the same maximum amplitude.

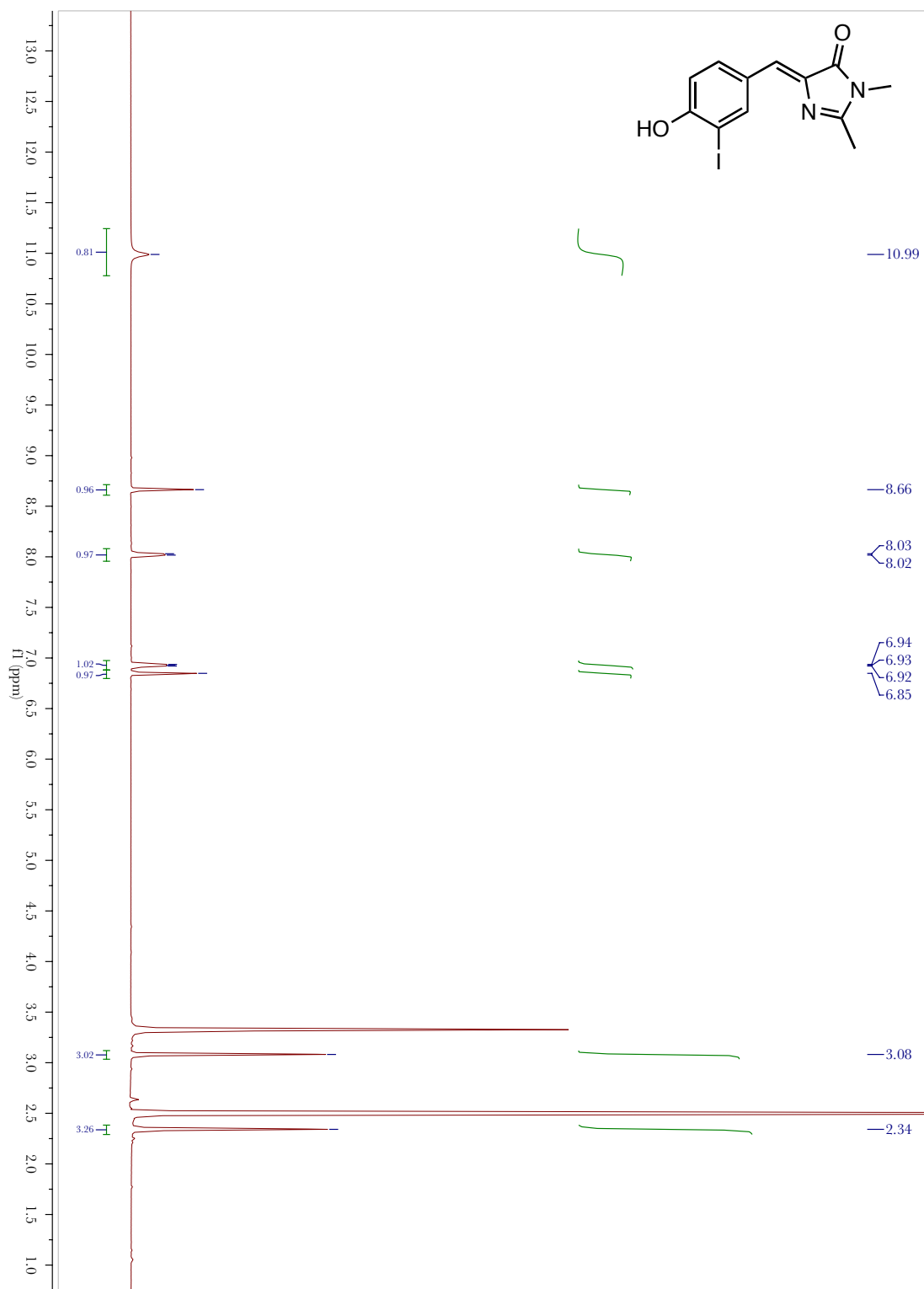
# NMR Spectra

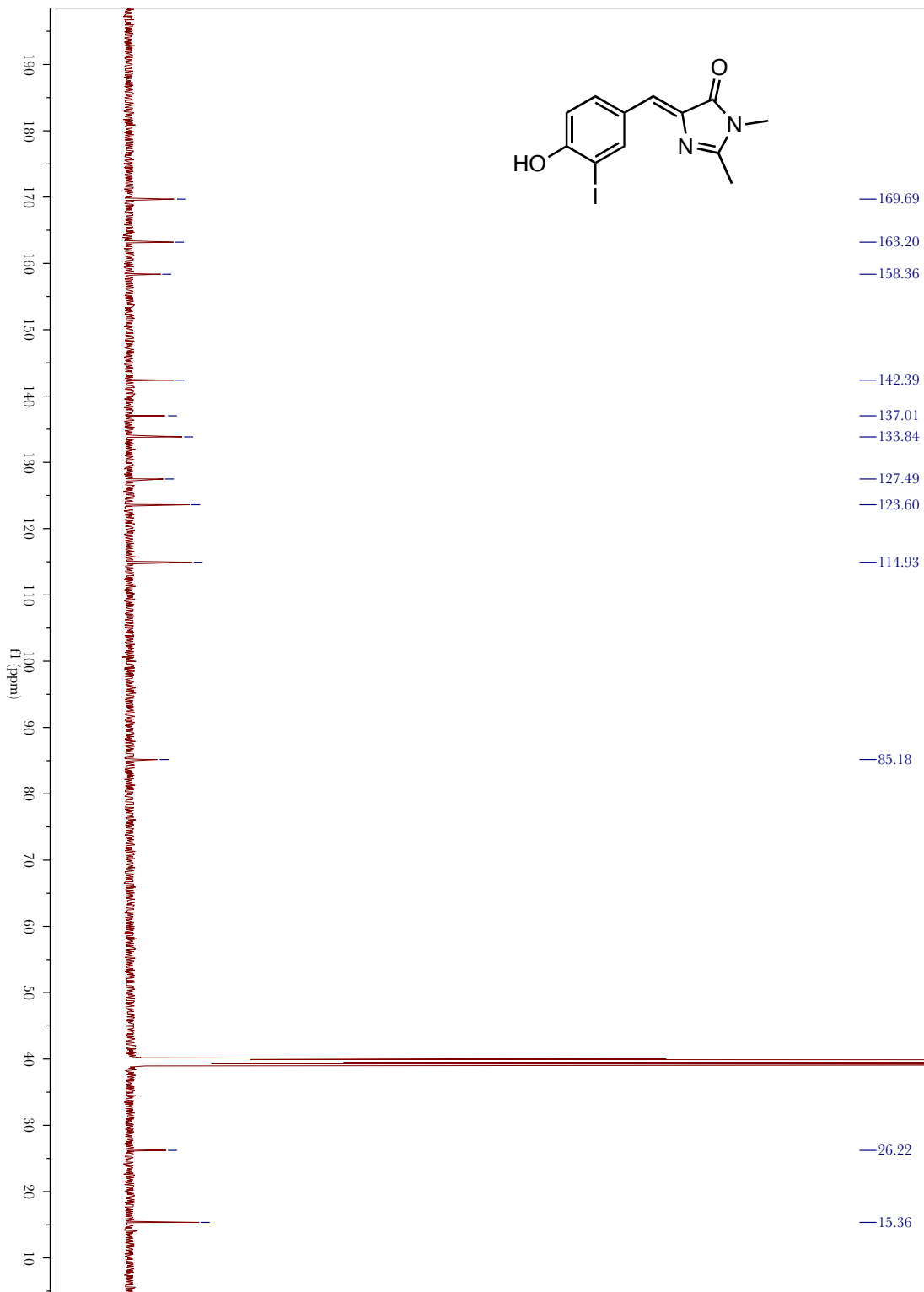
## Compound 7





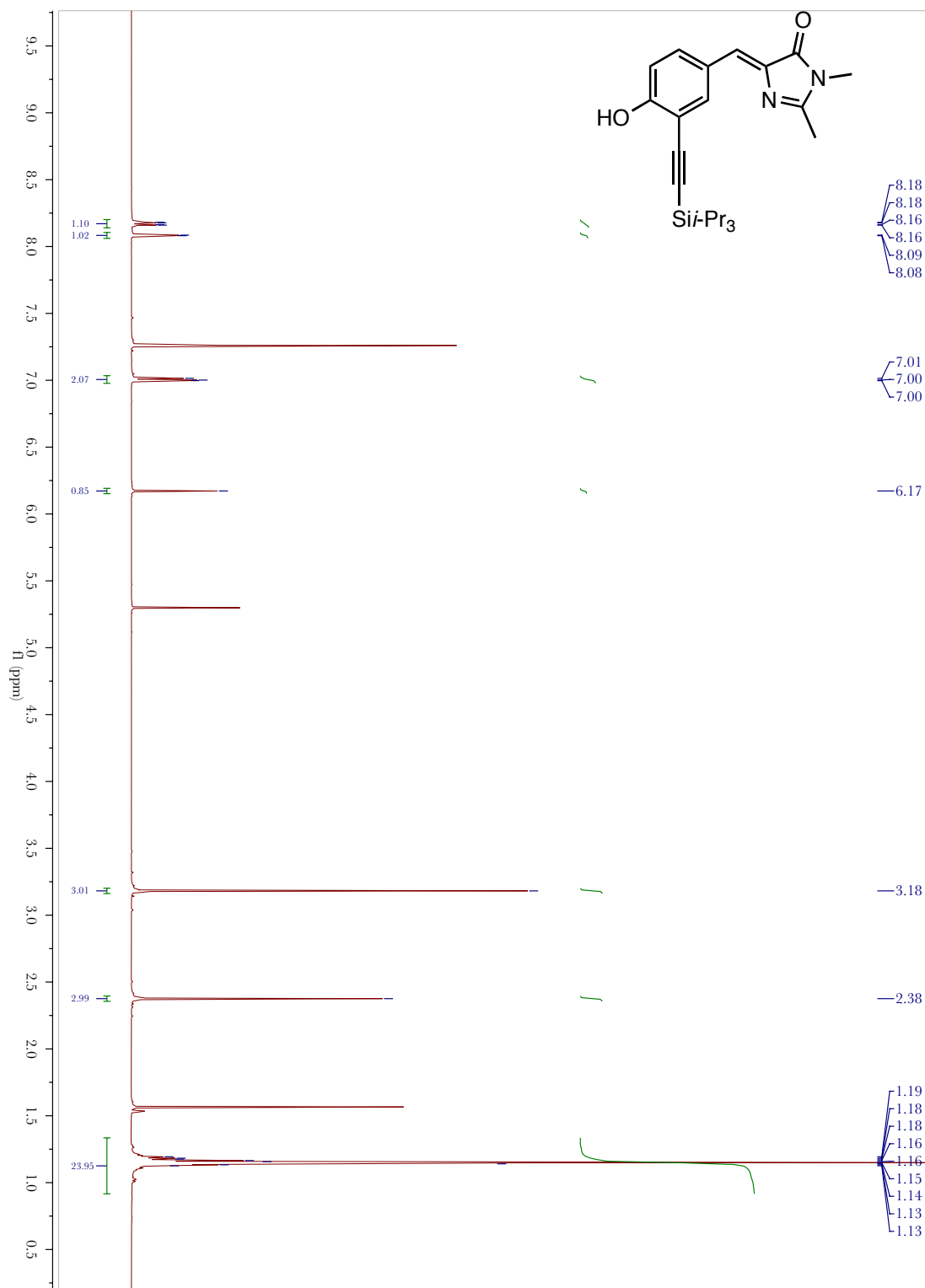
# Compound 5

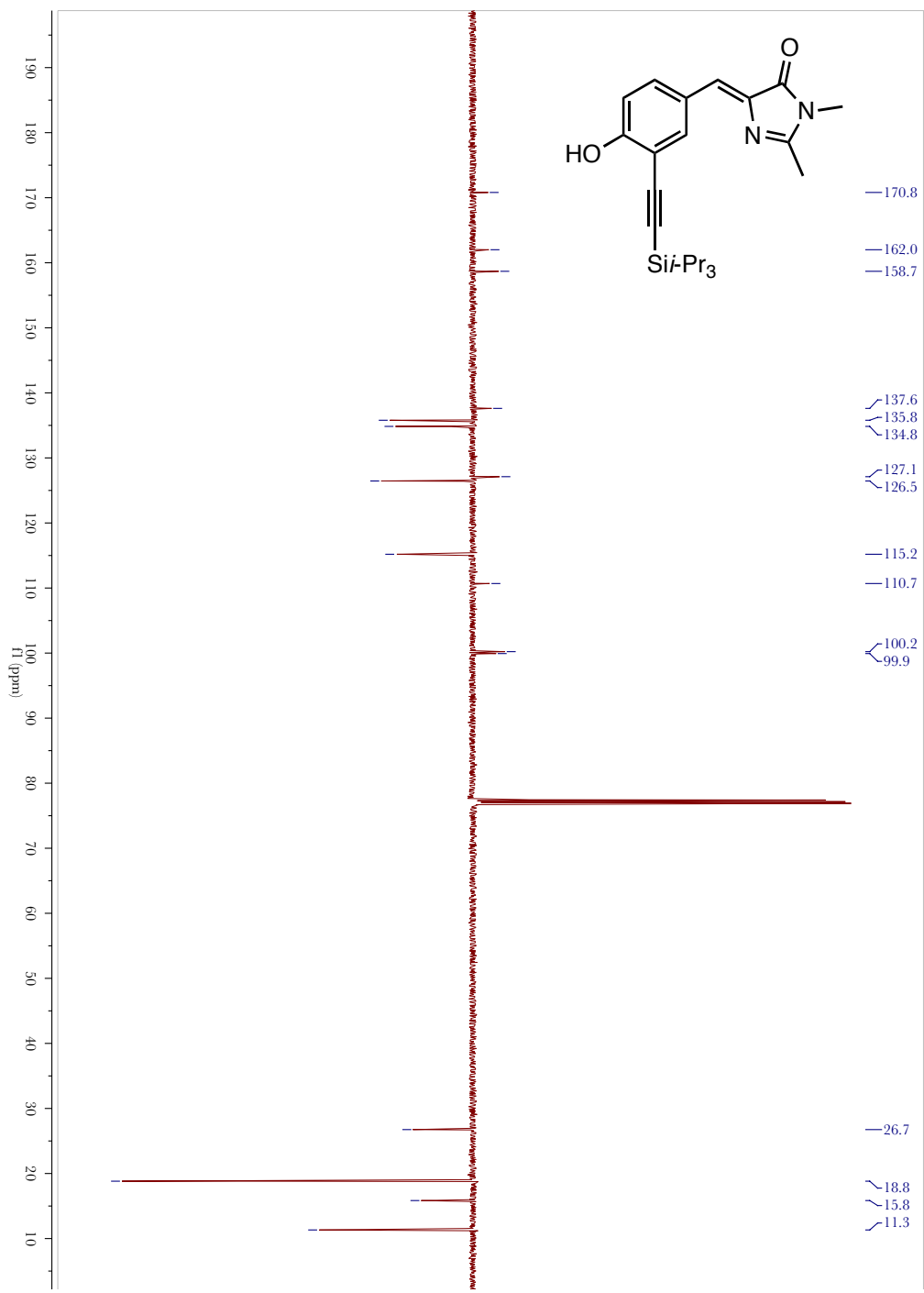




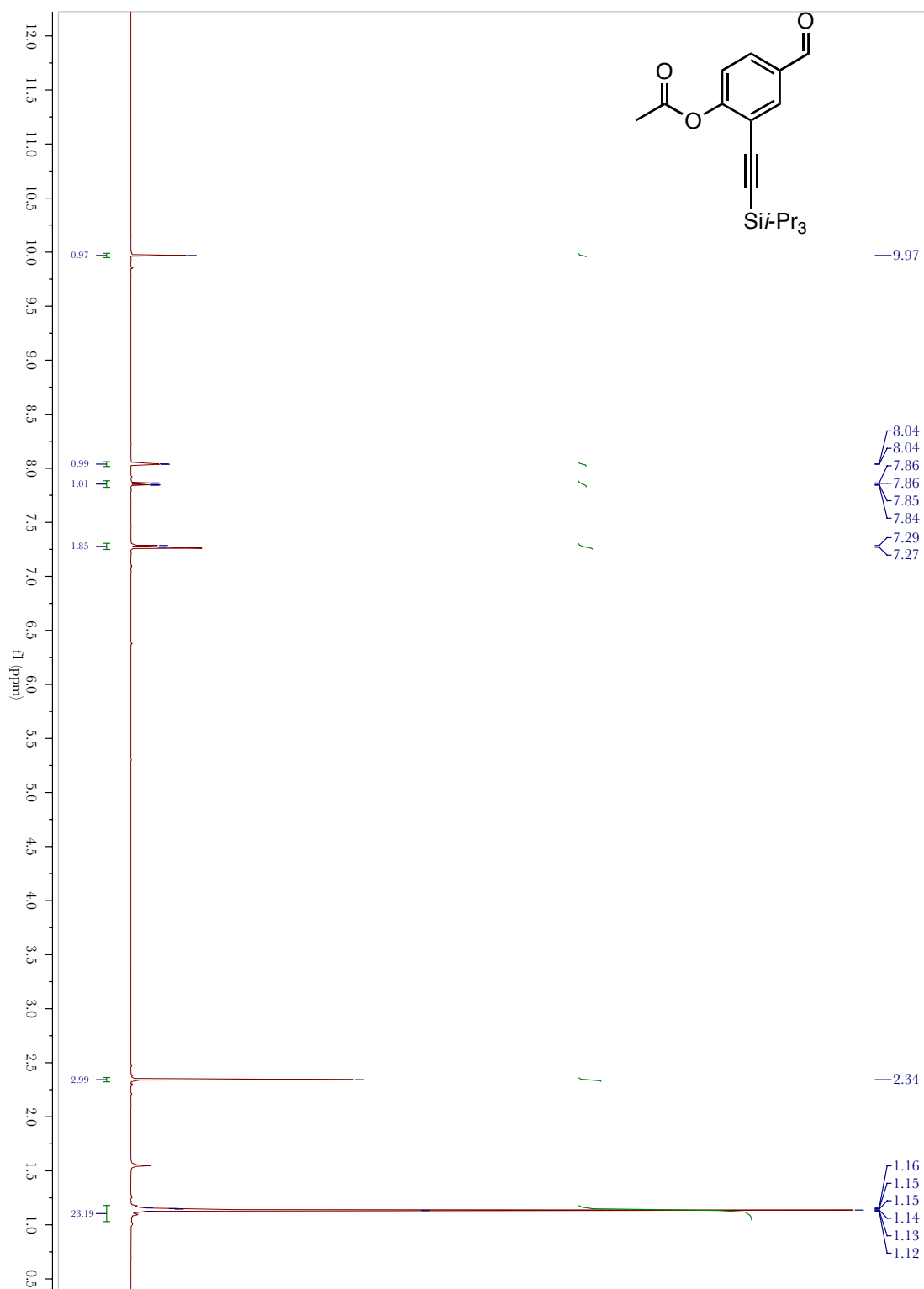


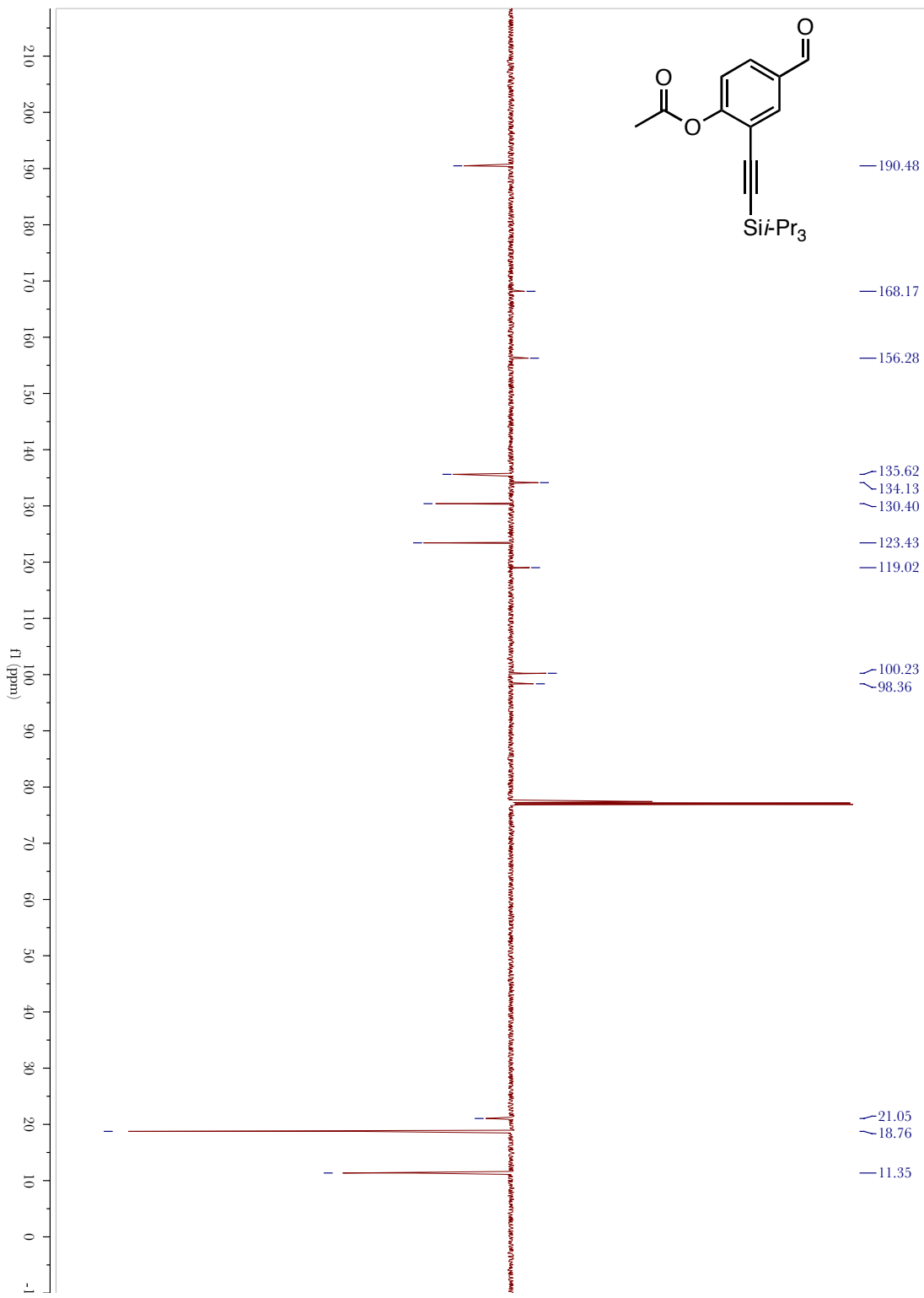
# Compound 3



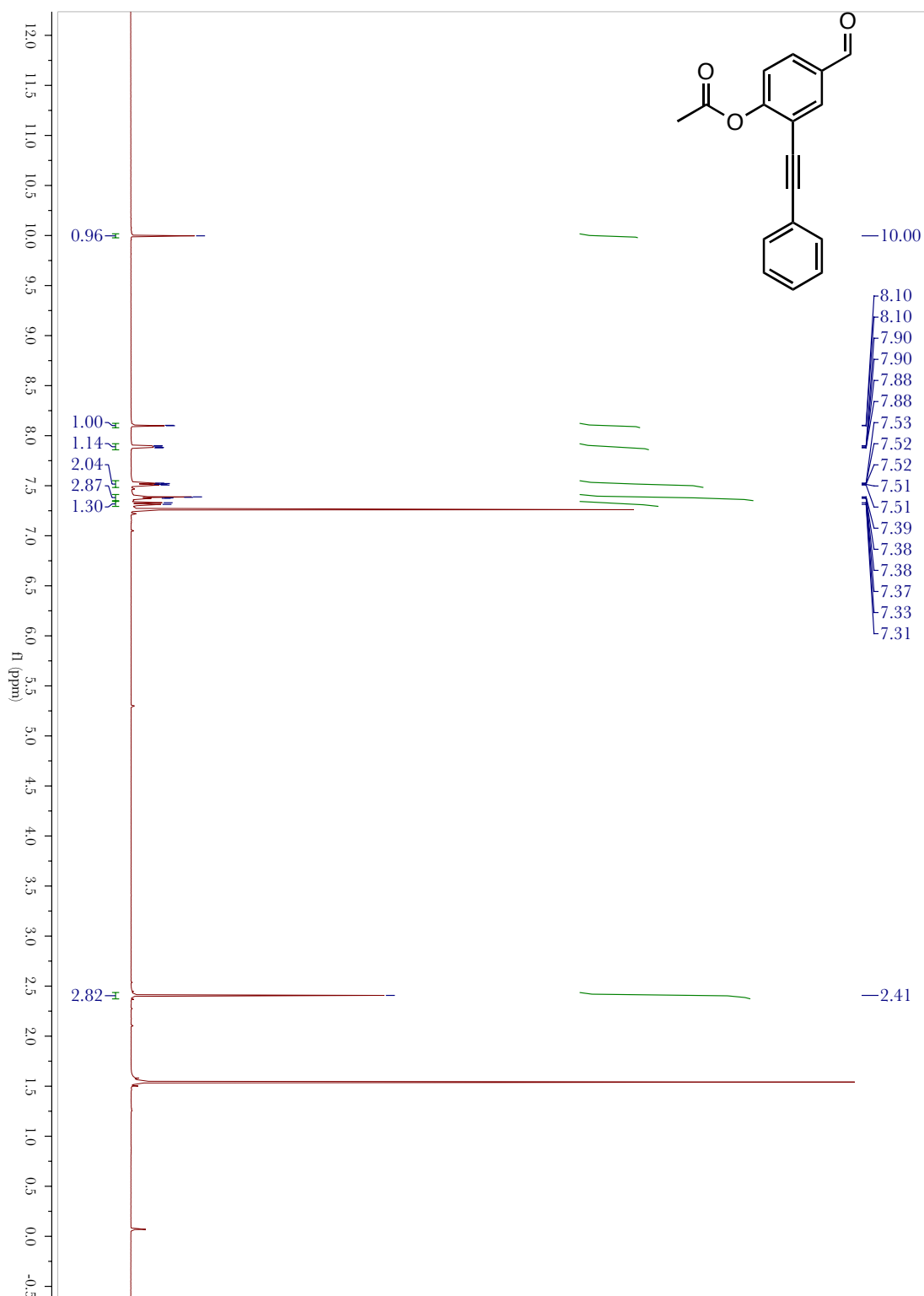


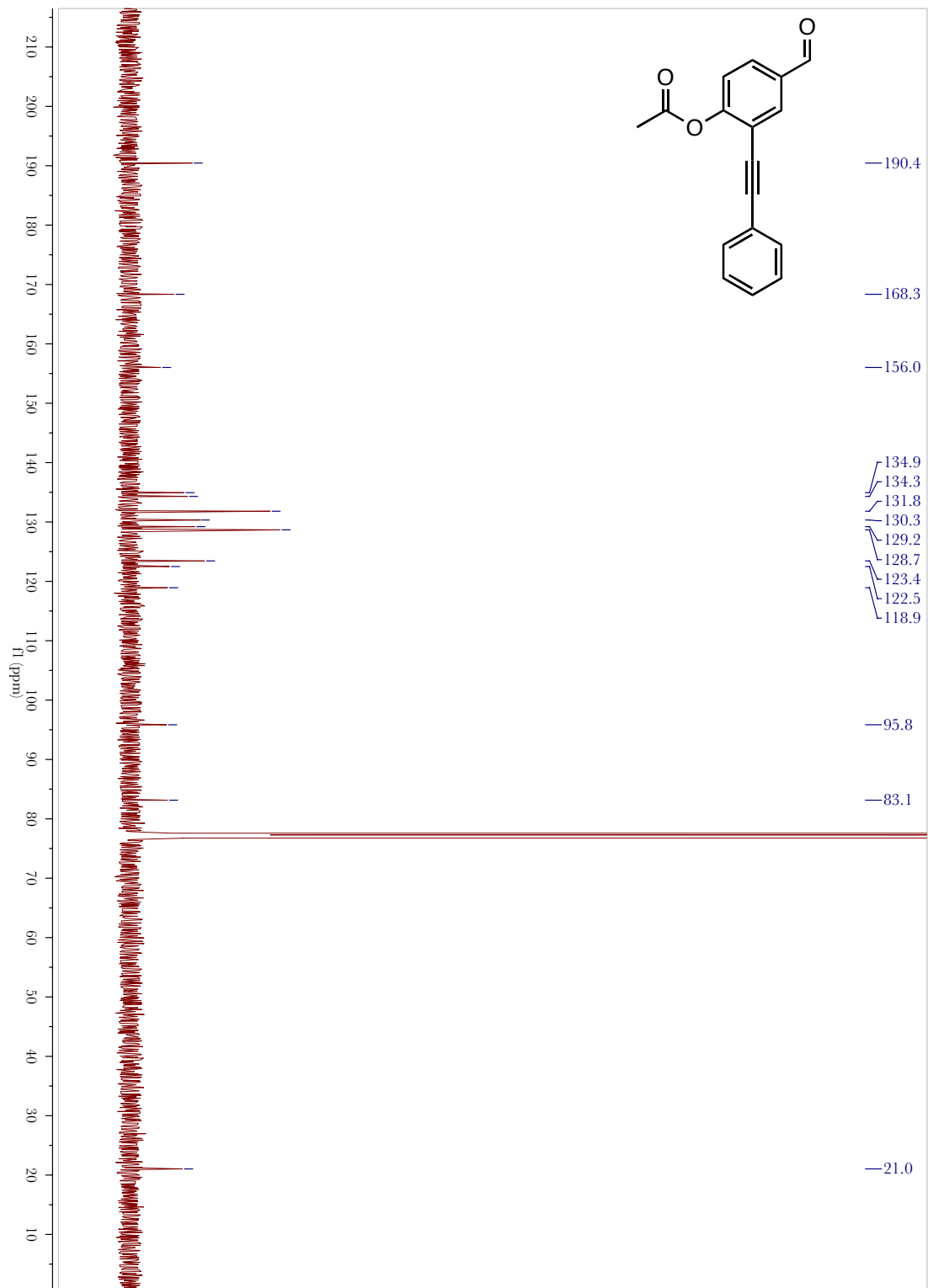
# Compound 9



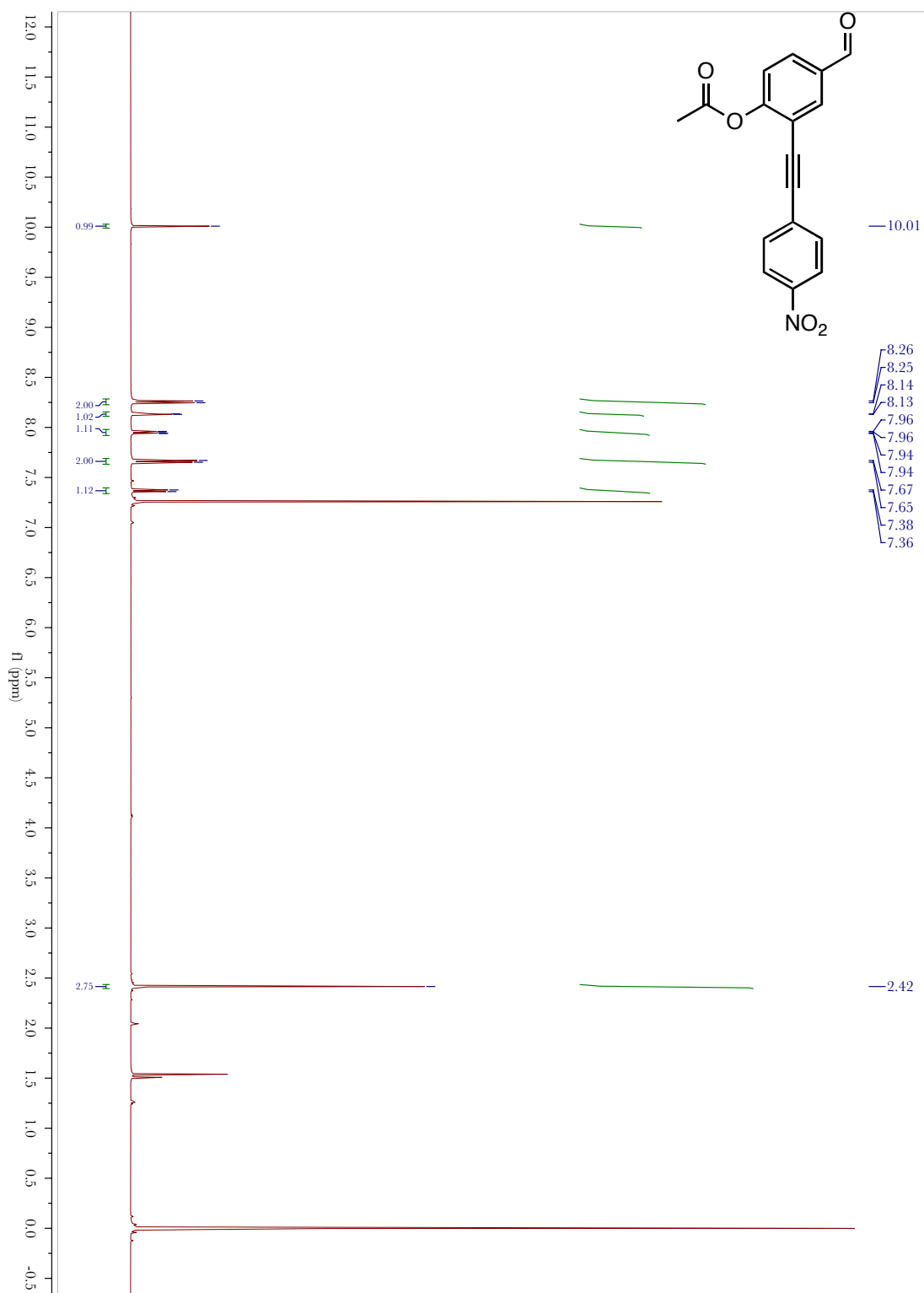


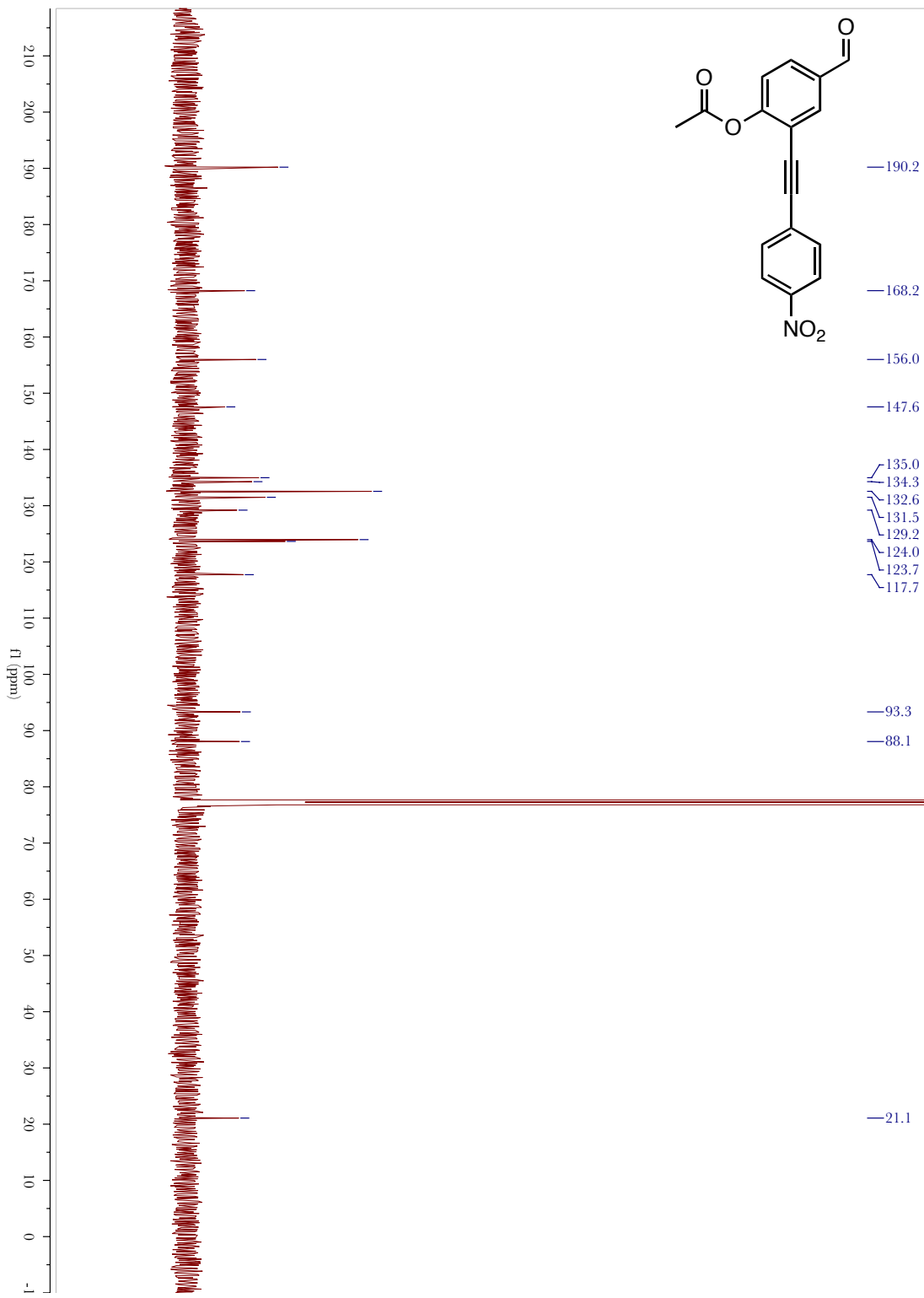
# Compound 10





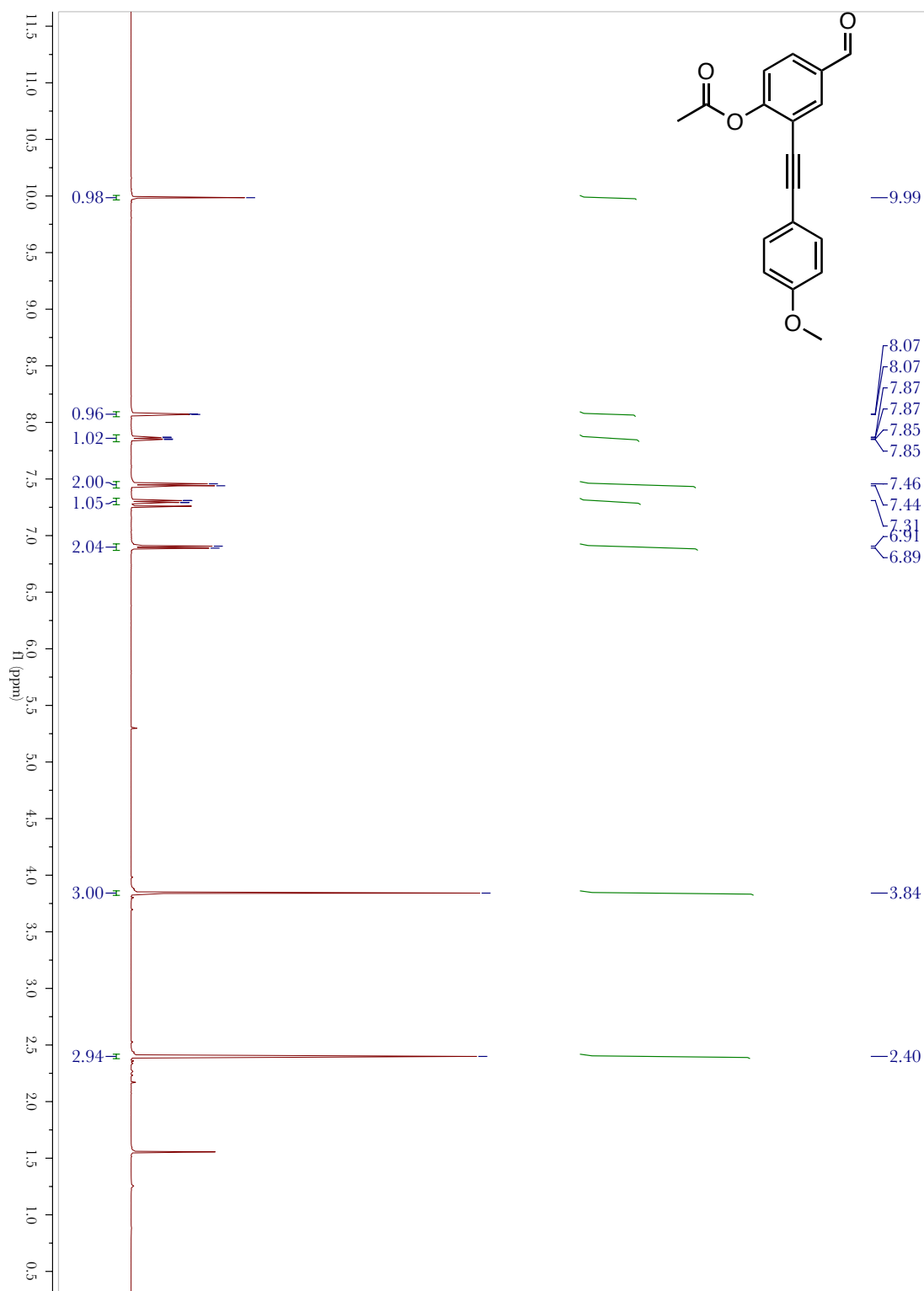
# Compound 11

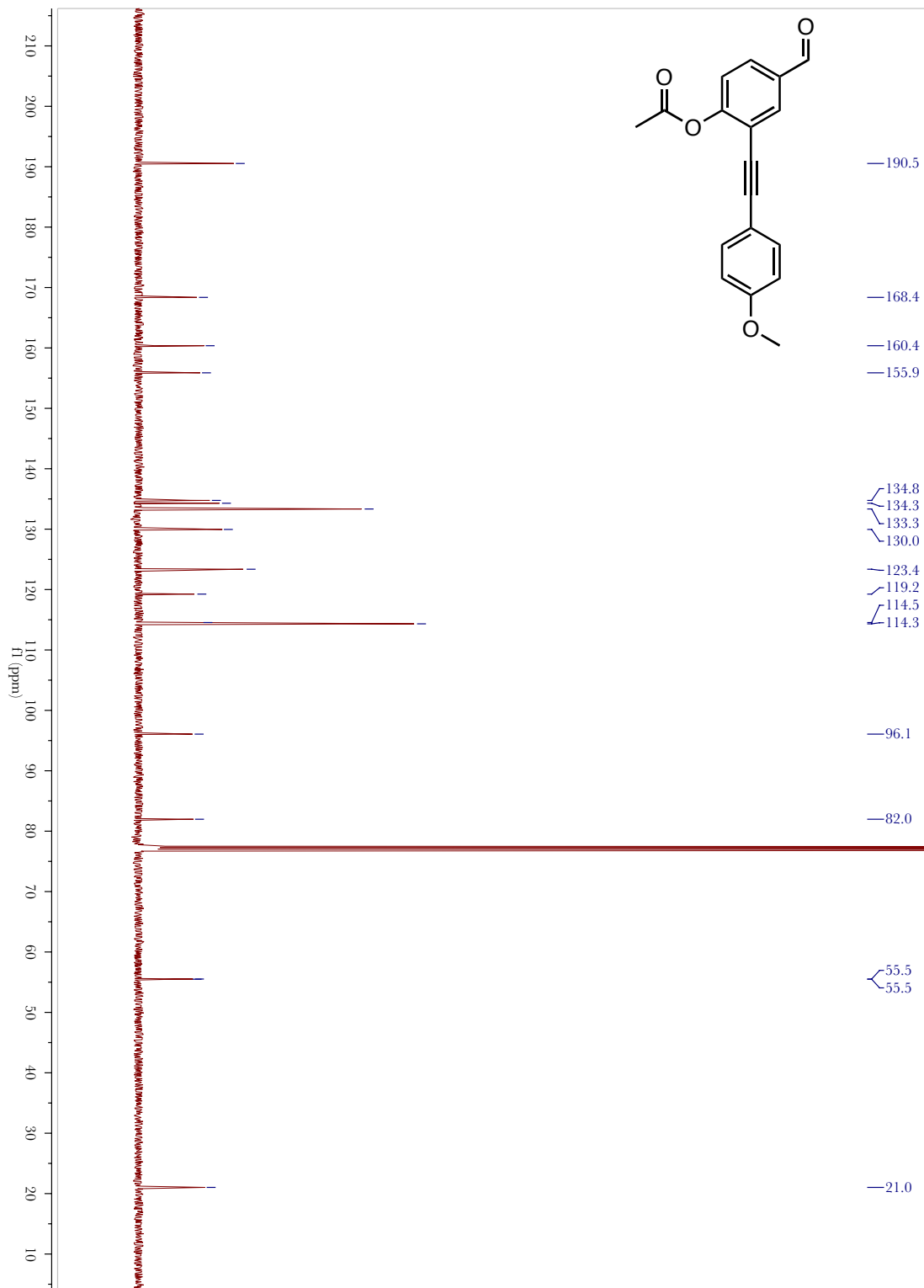




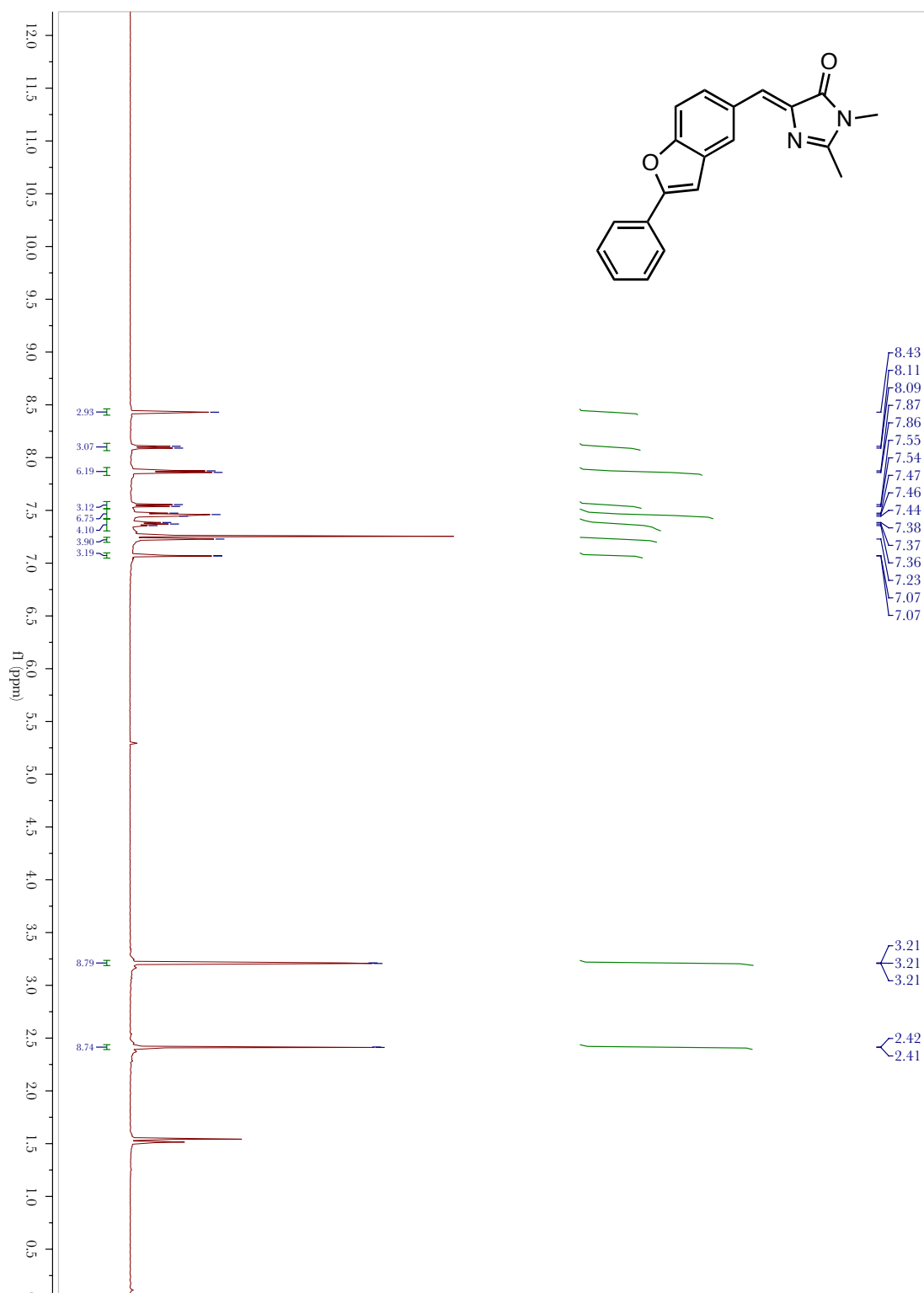


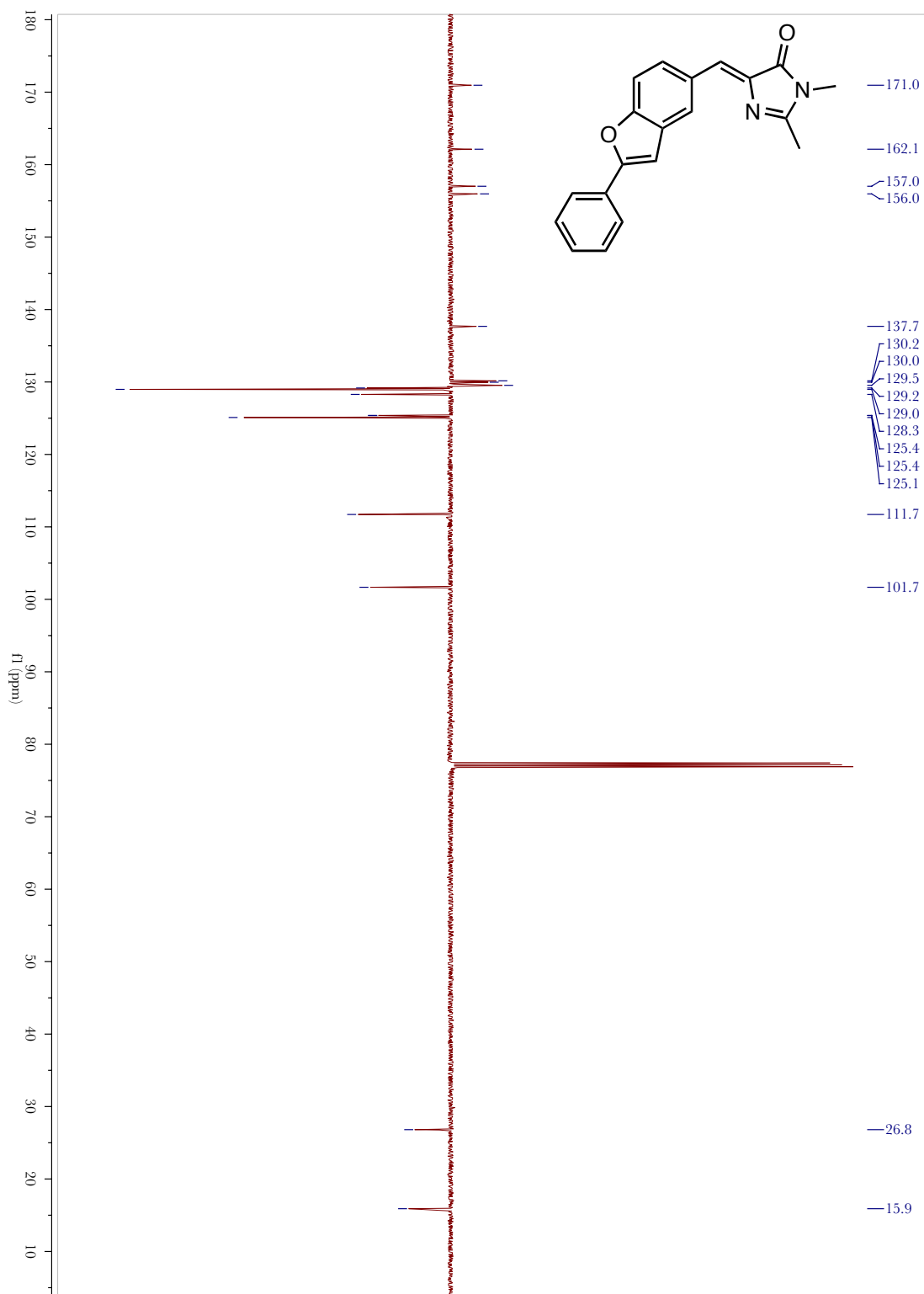
# Compound 12



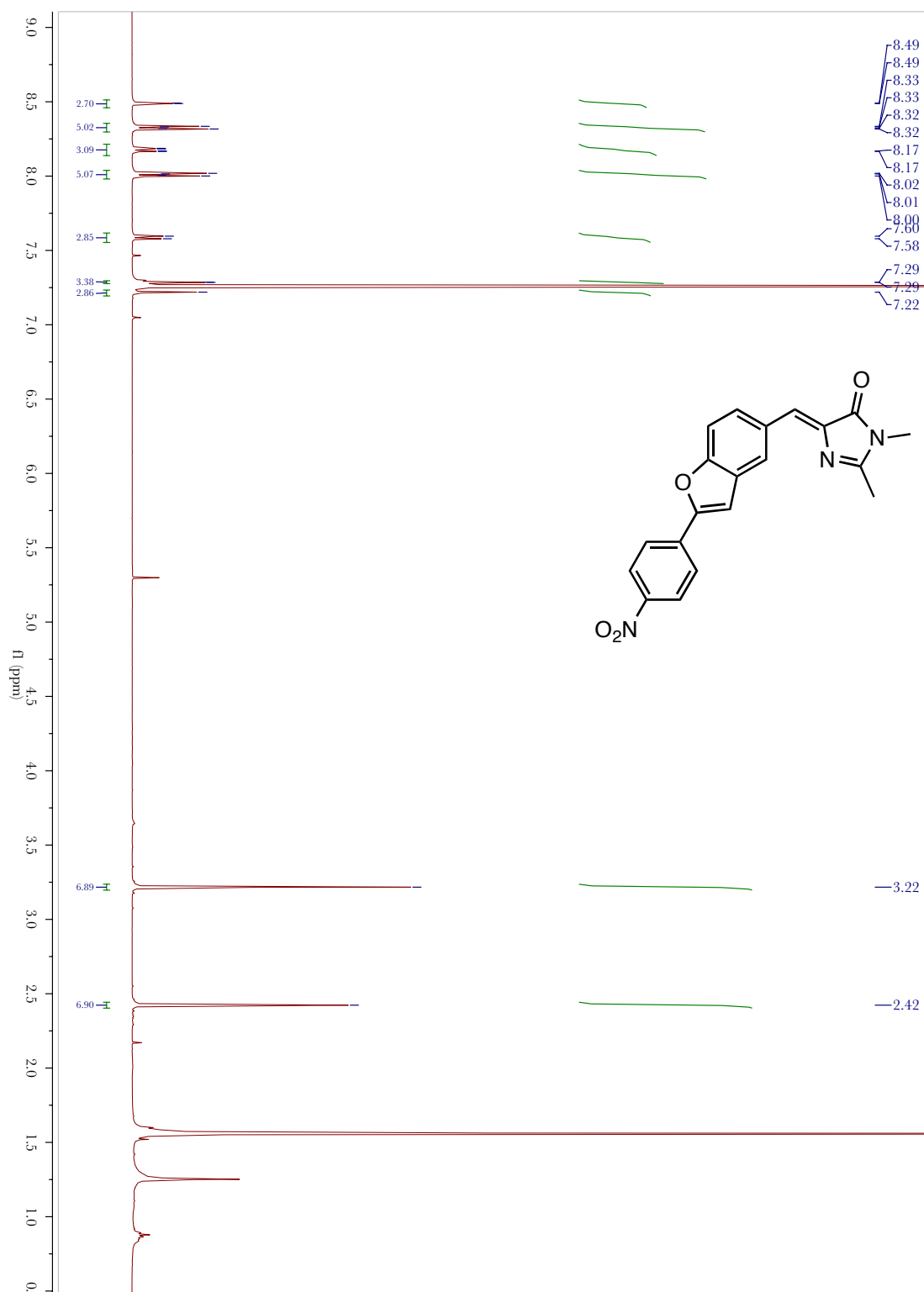


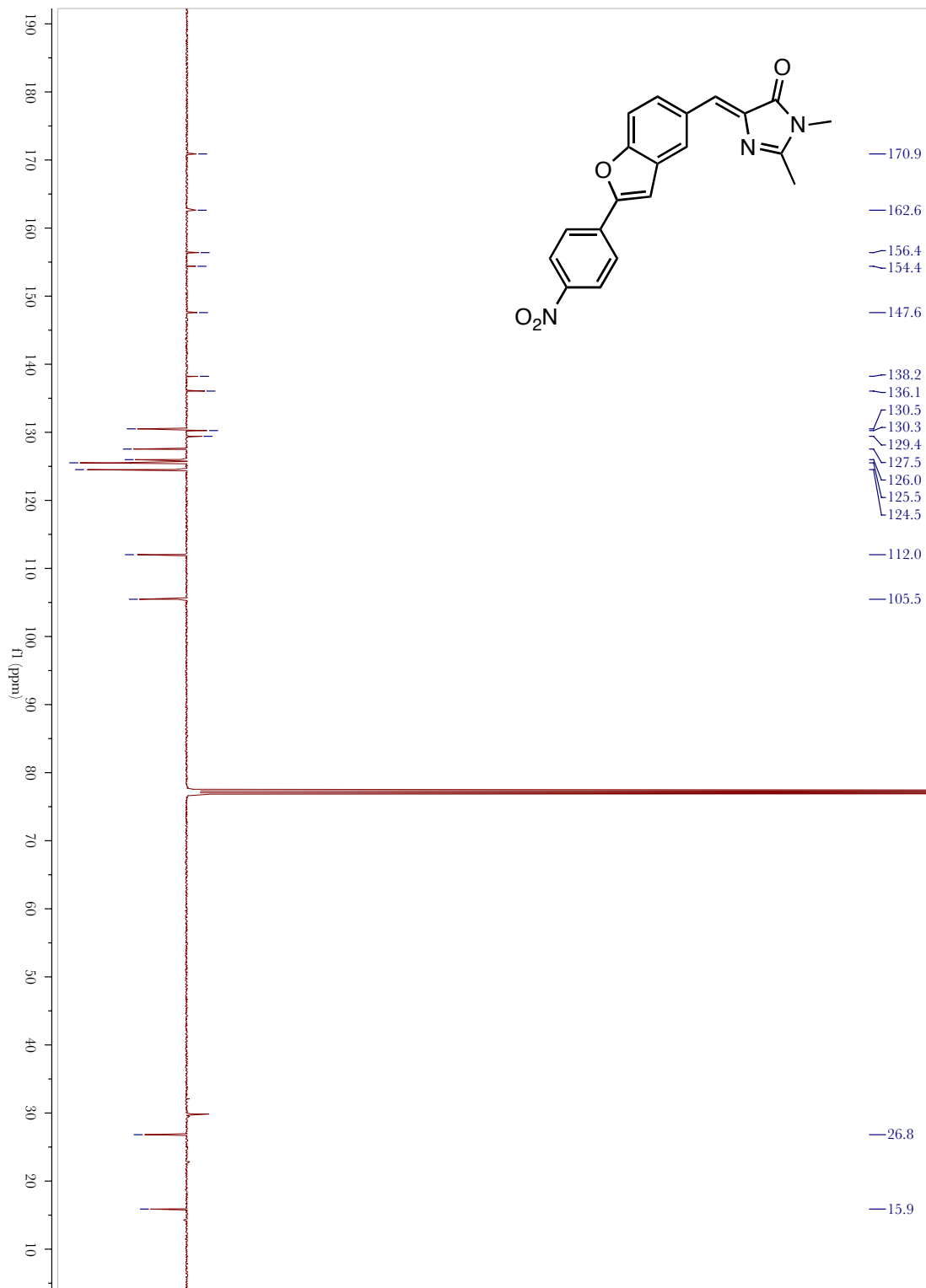
# Compound 13



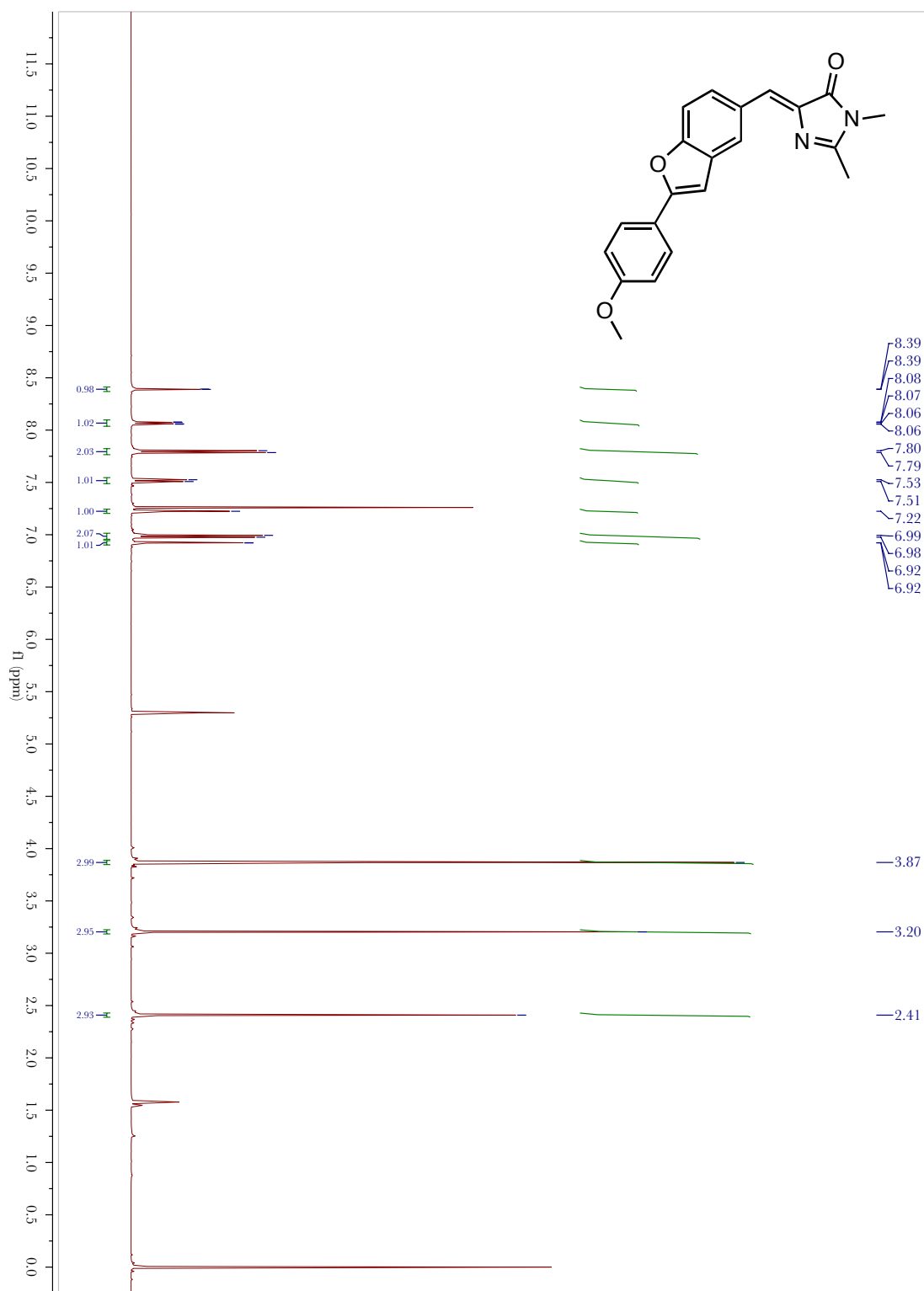


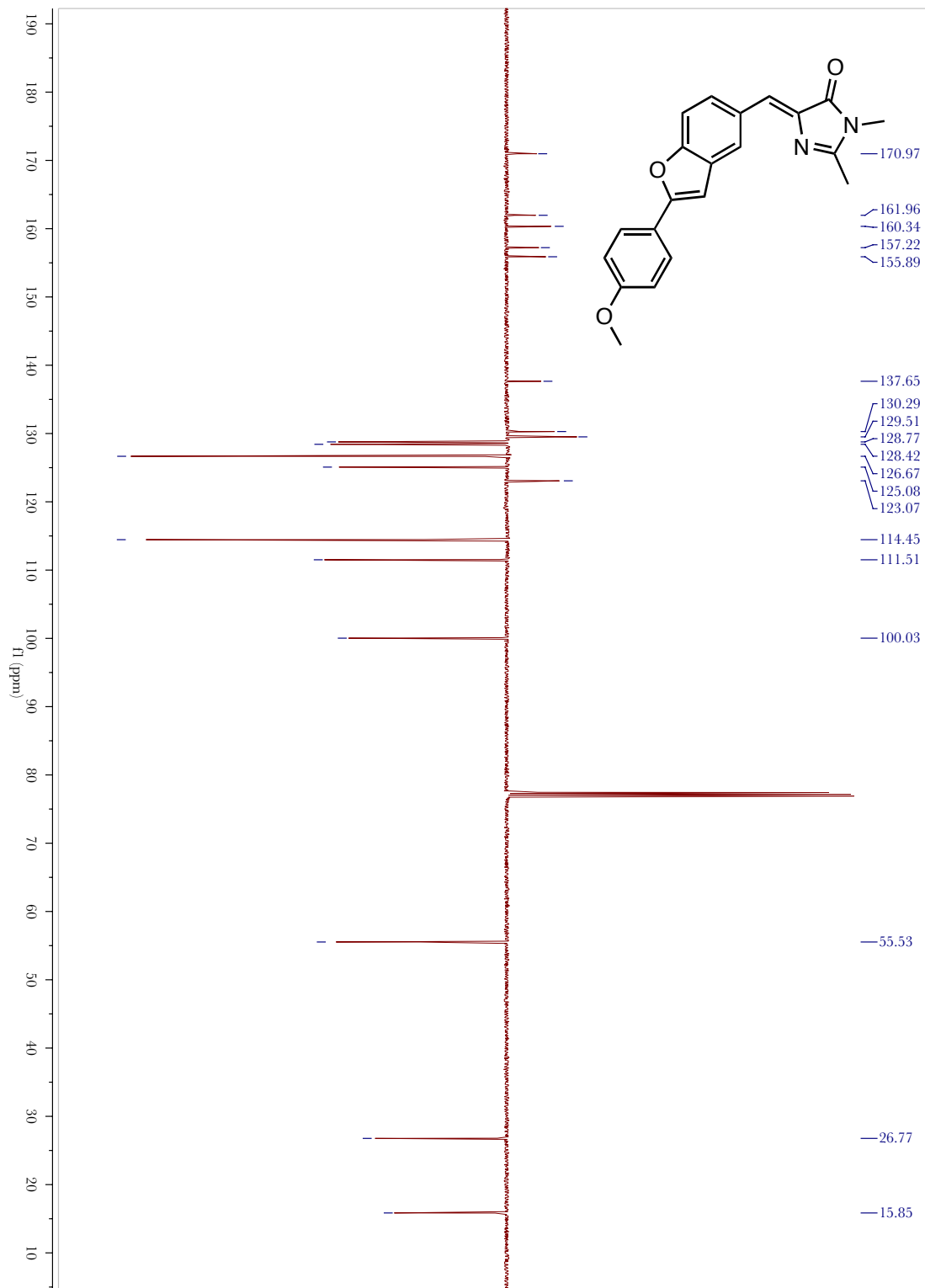
# Compound 14





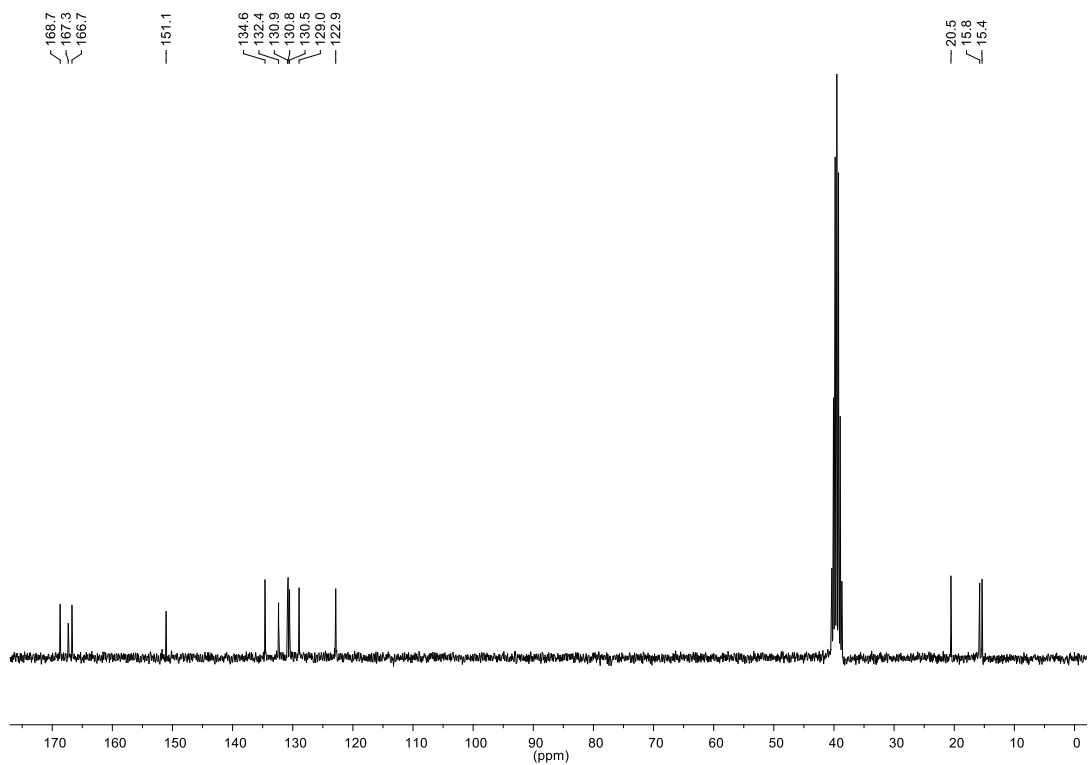
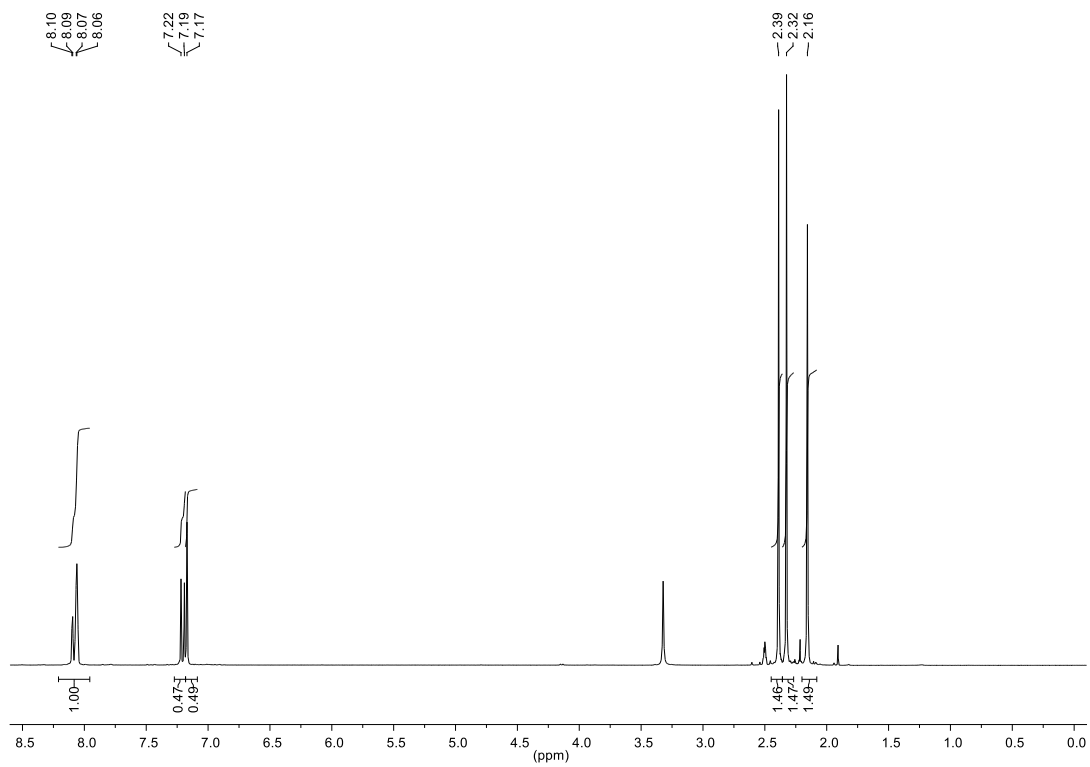
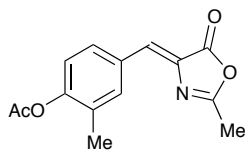
# Compound 15



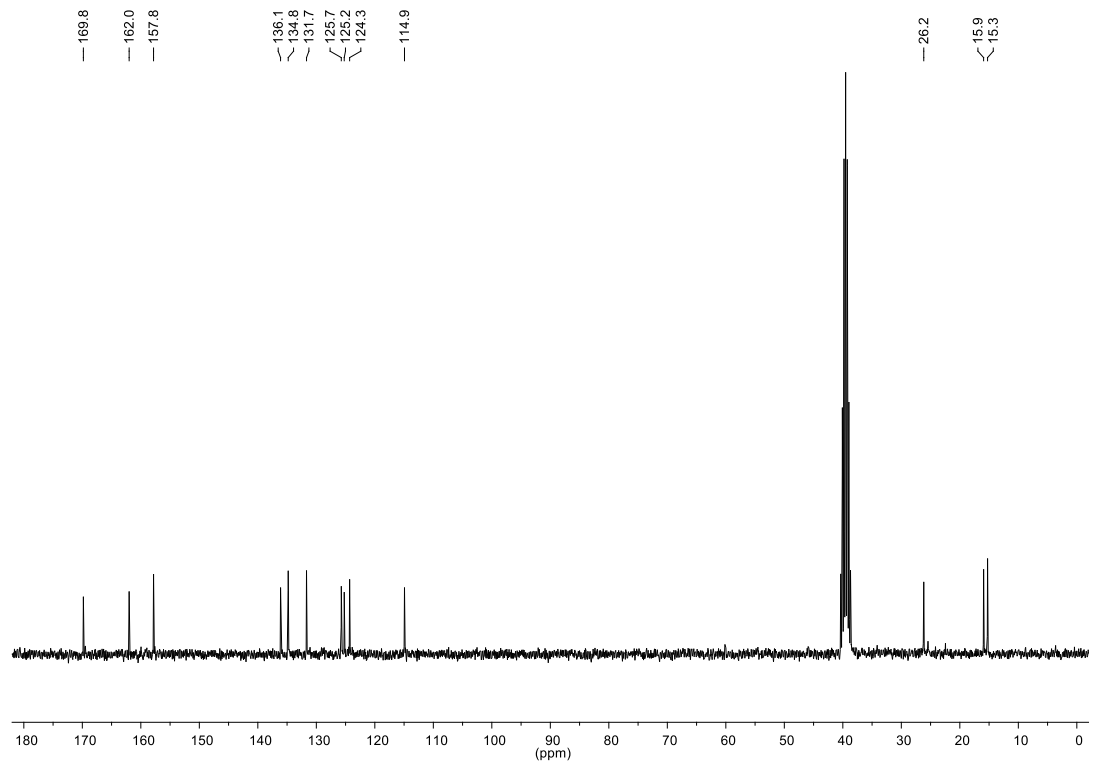
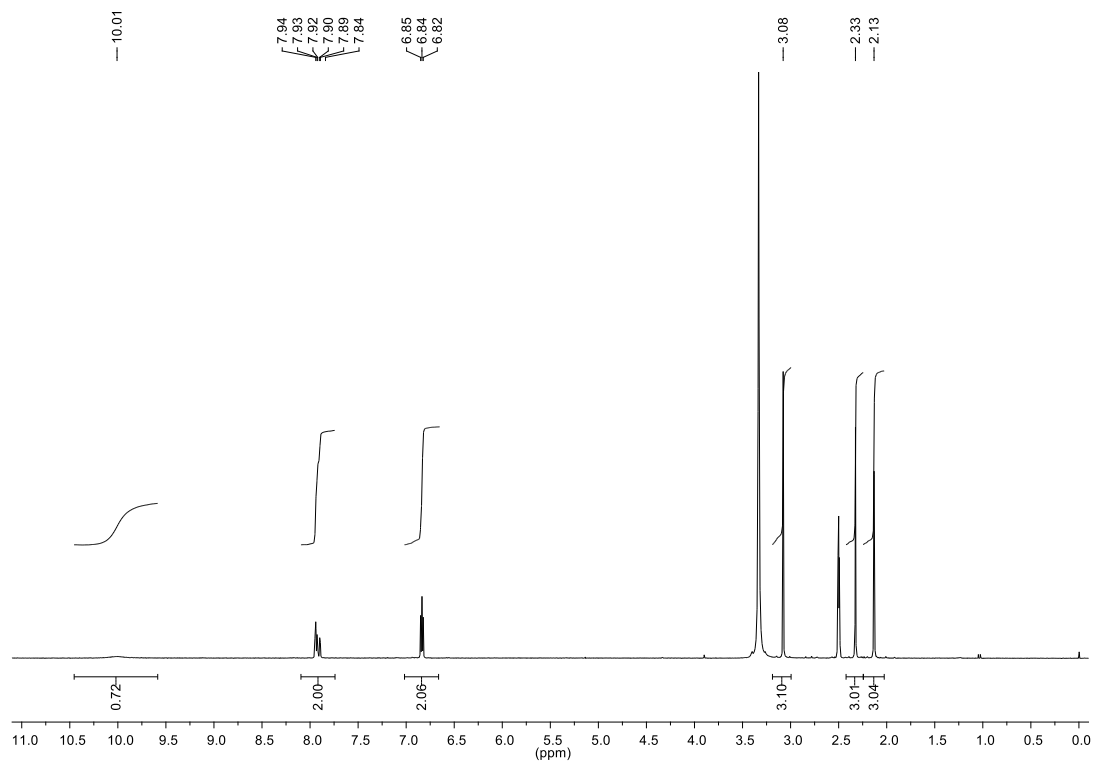
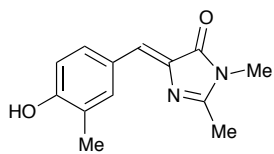




**(Z)-4-(4-acetoxy-3-methylbenzylidene)-2-methyl-1,3-oxazol-5(4H)-one**

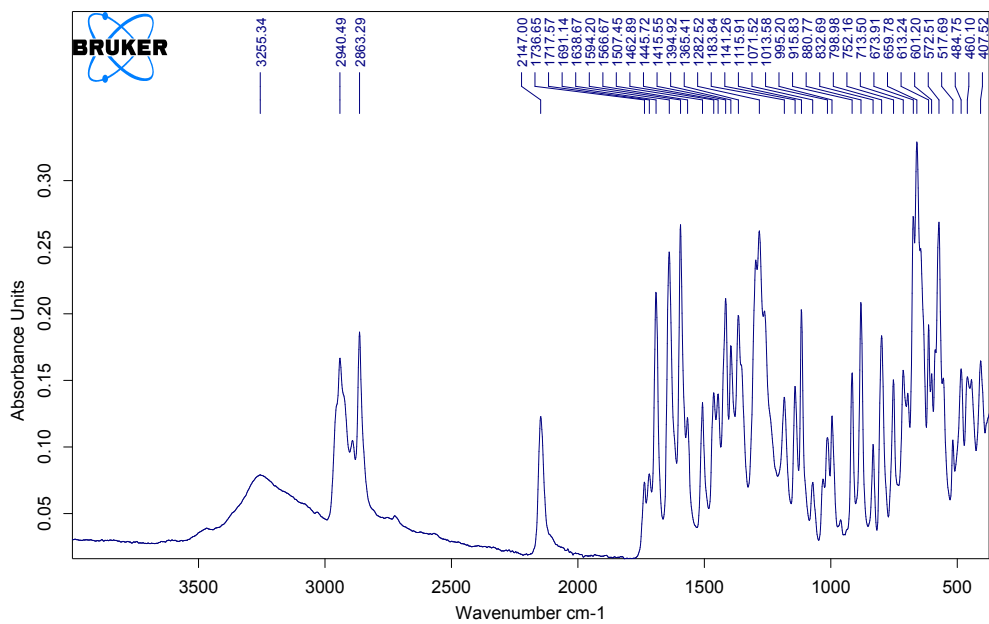
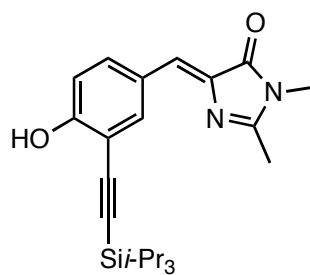


# Compound 16



# IR Spectra

## Compound 3



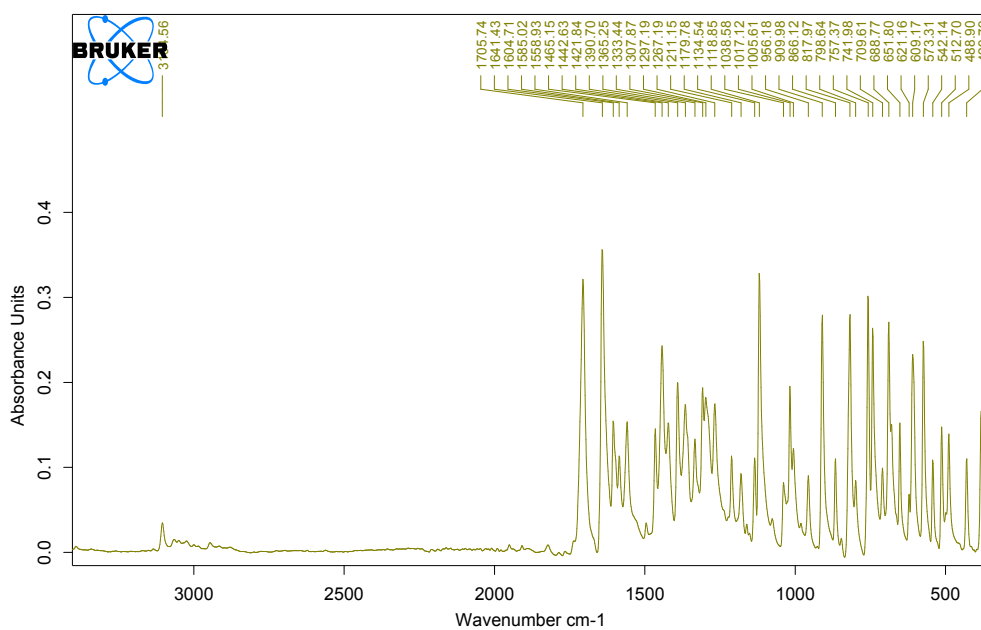
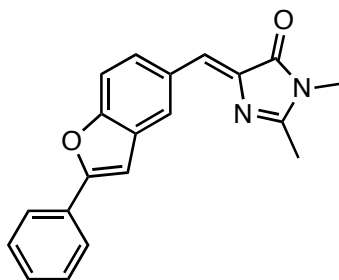
C:\DATA\MBNKS\JIGFPI18.0

GFP18

ATR platinum Diamond 1 Refl

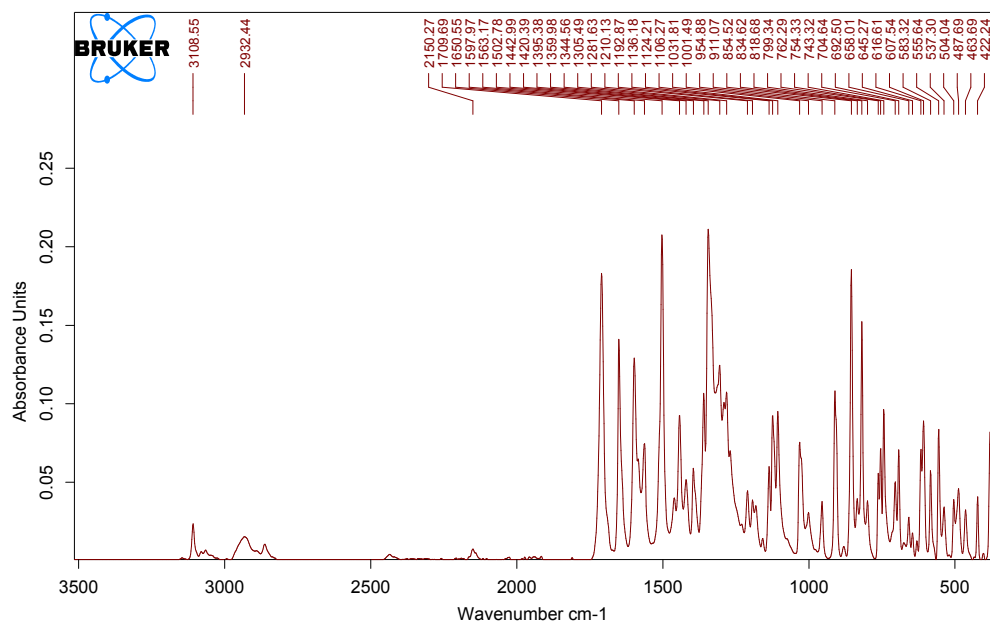
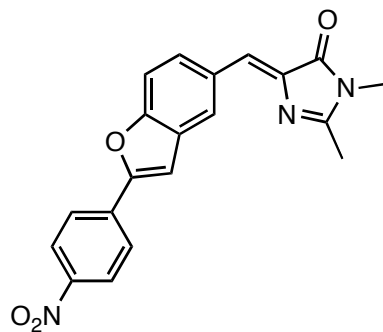
29/05/2012

# Compound 13



C:\DATA\MBN\KSJ\GFP4.0    GFP4    ATR platinum Diamond 1 Refl    29/05/2012

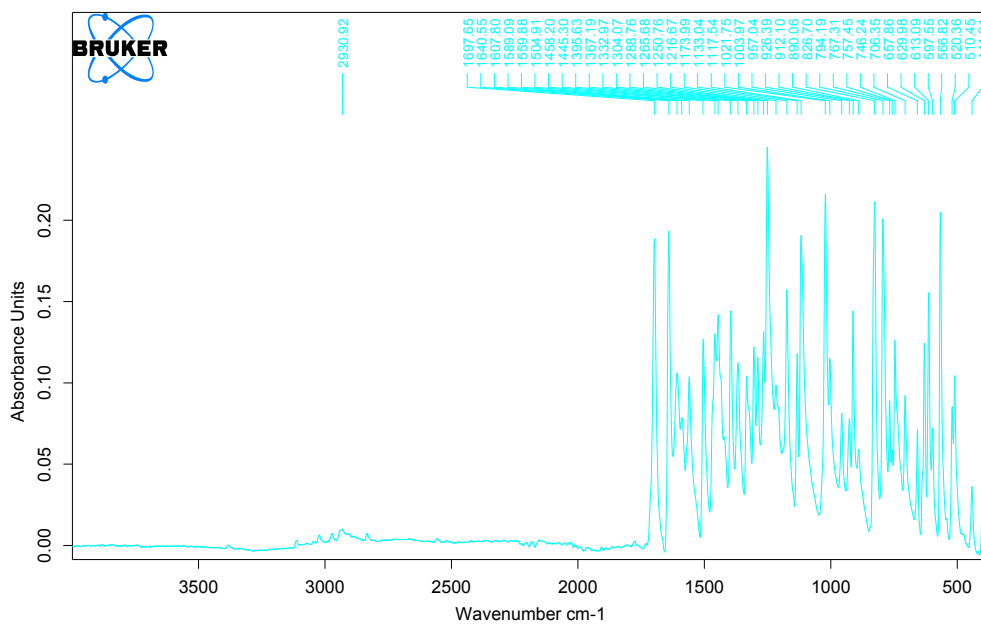
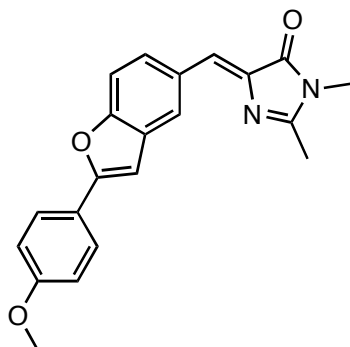
# Compound 14



C:\DATAMB\NKSJIGFPI20.0 GFPI20 ATR platinum Diamond 1 Refl

29/05/2012

# Compound 15



C:\DATA\MBNKS\JIGFPI15.0    GFPI15    ATR platinum Diamond 1 Ref    29/05/2012