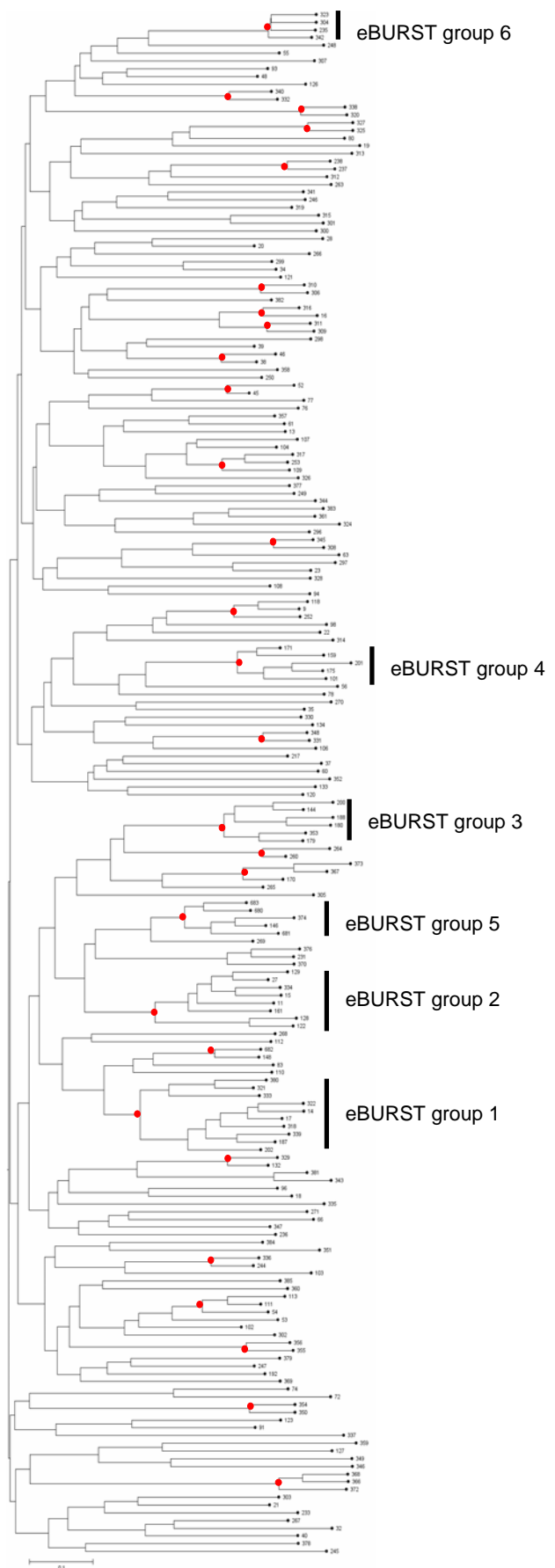


Figure 6.1 Unrooted Neighbour-Joining dendrogram based on allelic profiles of the 200 *P. aeruginosa* STs with Jukes-Cantor-based algorithm, 1,000 bootstrap replications.



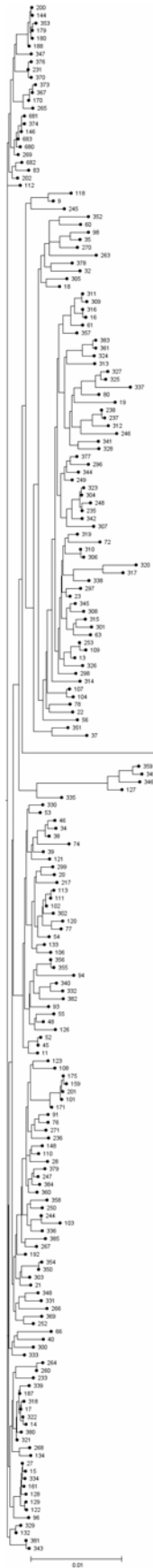


Figure 6.2 Unrooted Neighbour-Joining dendrogram of the 200 *P. aeruginosa* STs based on concatenated sequences of the seven housekeeping genes, with Jukes-Cantor-based algorithm, 1,000 bootstrap replications.

ST-366, ST-368 and ST-372