

Accepted Manuscript

# *Quarterly Journal of Engineering Geology and Hydrogeology*

## Drilling into mines for heat: geological synthesis of the UK Geoenergy Observatory in Glasgow and implications for mine water heat resources

Alison A. Monaghan, V Starcher, H F Barron, K Shorter, K Walker-Verkuil, J  
Elsome, T Kearsley, S Arkley, S Hannis & E Callaghan

DOI: <https://doi.org/10.1144/qjehg2021-033>

To access the most recent version of this article, please click the DOI URL in the line above. When citing this article please include the above DOI.

Received 20 March 2021

Revised 28 May 2021

Accepted 7 June 2021

© 2021 UKRI. The British Geological Survey. Published by The Geological Society of London. All rights reserved. For permissions: <http://www.geolsoc.org.uk/permissions>. Publishing disclaimer: [www.geolsoc.org.uk/pub\\_ethics](http://www.geolsoc.org.uk/pub_ethics)

Supplementary material at <https://ukgeos.ac.uk/data-downloads>

### **Manuscript version: Accepted Manuscript**

This is a PDF of an unedited manuscript that has been accepted for publication. The manuscript will undergo copyediting, typesetting and correction before it is published in its final form. Please note that during the production process errors may be discovered which could affect the content, and all legal disclaimers that apply to the journal pertain.

Although reasonable efforts have been made to obtain all necessary permissions from third parties to include their copyrighted content within this article, their full citation and copyright line may not be present in this Accepted Manuscript version. Before using any content from this article, please refer to the Version of Record once published for full citation and copyright details, as permissions may be required.

## **Drilling into mines for heat: geological synthesis of the UK Geoenergy Observatory in Glasgow and implications for mine water heat resources**

*Alison A. Monaghan\*<sup>1</sup>, V Starcher<sup>1</sup>, H F Barron<sup>1</sup>, K Shorter<sup>1</sup>, K Walker-Verkuil<sup>1</sup>, J Elsome<sup>2</sup>, T Kearsey<sup>1</sup>, S Arkley<sup>1</sup>, S Hannis<sup>1</sup>, E Callaghan<sup>1</sup>*

<sup>1</sup> *British Geological Survey, Lyell Centre, Research Avenue South, Edinburgh, EH14 4AP, UK*

<sup>2</sup> *British Geological Survey, Nicker Hill, Keyworth, Nottingham, NG12 5GG, UK*

*\*Corresponding author als@bgs.ac.uk , Orcid-ID 0000-0003-2147-9607*

### **Abstract**

Thermal energy from groundwater in abandoned, flooded, coal mines has the potential to make a significant contribution to decarbonisation of heat and Net-Zero carbon emissions. In Glasgow, UK, a subsurface observatory has been constructed for mine water heat and heat storage research. We synthesise geological and mine water resource findings from a four-year period of borehole planning, drilling, logging and testing. The heterogeneous bedrock is typical of the Scottish Coal Measures Group, whereas superficial deposits are more sand- and gravel-dominated than prognosed. Mine water boreholes encountered workings in the Glasgow Upper, Glasgow Ell and Glasgow Main coal seams, proving water-filled voids, mine waste, fractured rock mass and intact coal pillars with high yields on initial hydrogeological testing. Whilst the depth and extent of mine workings delineated on mine abandonment plans proved accurate, metre-scale variability was expected and proved in the boreholes. A mine water reservoir classification established from the observatory boreholes highlights the resource potential in areas of total extraction, stowage, and stoop and room workings. Since their spatial extent is more extensive across the UK than shafts or roadways, increasing the mine water energy evidence base and reducing exploration risk in these types of legacy workings is important.

Net-Zero carbon emissions targets require significant progress to be made in the decarbonisation of heat. UK and devolved Government policy has shifted to meet Net-Zero targets by 2050 or earlier (e.g. HM Government 2018, 2020; Scottish Government 2020; CCC 2019) and whilst significant progress has been made in the decarbonisation of electricity (HM Government 2020), decarbonisation of heat presents a more difficult policy and implementation challenge (Abesser 2020; POSTNOTE 2020). For example, in 2019 48 GW of renewable electricity capacity was available in the UK representing 37 % of generation, whereas 90% of homes used fossil fuels for heating, cooking and hot water (HM Government 2020) with peak heat demand calculated at 170 GW

(Watson *et al.* 2019). In 2020, the UK Government's energy white paper included major ambitions to transform heating of homes to clean energy sources including a target of installation of 600,000 heat pumps a year by 2028 (HM Government 2020). However, the value of the subsurface for decarbonisation needs to be better understood by decision-makers, progressing by delivering scaled-up pilot schemes, independent environmental monitoring and improved characterisation (Stephenson *et al.* 2019). Geothermal energy and subsurface heat storage have significant potential for delivering low-carbon heat. Low enthalpy 'shallow geothermal' heat recovery from and seasonal thermal storage in abandoned coal mines offers one such opportunity (Gluyas *et al.* 2018; Adams *et al.* 2019; Stephenson *et al.* 2019).

Many of the UK's towns and cities are underlain by abandoned coal mines. Upon closure and with the cessation of dewatering, the mines have become naturally flooded with groundwater. The man-made workings and rock mass surrounding them have a higher permeability compared to unmined rock due to still-open and partially-collapsed mined voids and collapse-related fractures forming an 'anthropogenically-enhanced aquifer'. Banks *et al.* (2004, 2009, 2017) and others have documented that mine water can be abstracted through a borehole and passed through a heat exchanger and heat pump to provide space heating and cooling for homes and businesses, before being returned within a sealed loop to a different part of the mine system via a second borehole (Figure 1). Important factors for mine water heat resources include the presence and connectivity of flooded, abandoned mine workings, groundwater flow directions and recharge, pumping rate information, temperature, water levels and chemistry (e.g. Ramos *et al.* 2015, Loredo *et al.* 2016; Banks *et al.* 2017; Farr *et al.* 2020), as well as land availability and heat demand. Flooded mine workings can act as a thermal reservoir, with the potential to provide both heat recovery and heat storage, as required. The legacy of coal mining can thus be turned into a sustainable opportunity for low-carbon heating.

Small numbers of successfully-operating mine water geothermal and heat storage schemes have proved the concept of using this decarbonised energy source for heating and cooling of buildings (e.g. UK, Banks *et al.* 2017, Lanchester Wines 2021; Heerlen Netherlands, Verhoeven *et al.* 2014; Asturias Spain, Loredo *et al.* 2016; Springhill Canada Jessop 1995; USA Watzlaf and Ackman 2006). An increasing number of mine water energy schemes are in exploration and operational stages in the UK (e.g. Athresh *et al.* 2015; Banks *et al.* 2017; Brabham *et al.* 2019; Coal Authority 2020). However, the very large resource potential (e.g. Gillespie *et al.* 2013; Preene and Younger 2014; Ramos *et al.* 2015; Bailey *et al.* 2016; Farr *et al.* 2016, Gluyas *et al.* 2019) has yet to be widely exploited. Commercial demonstration of mine water heat technology is critical in breaking

economic, regulatory, awareness and acceptance barriers to this widespread utilisation (NERC *et al.* 2019), though making the business case can be challenging (Townsend *et al.* 2021) especially with uncertainty over support mechanisms and policy (e.g. the Renewable Heat Incentive). Underpinning geoscientific research and innovation is essential, for enhancing process understanding, providing an open evidence base towards social acceptance, defining cost models and reducing risk (NERC *et al.* 2019; Stephenson *et al.* 2019). As one of a growing number of underground laboratories worldwide, the UK Geenergy Observatory in Glasgow ('Glasgow Observatory', Figure 2) is a unique facility for investigating shallow, low-temperature mine water thermal energy resources in abandoned and flooded workings at depths of around 50-85 m, together with baseline and induced environmental change.

The scientific rationale for the Glasgow Observatory is multi-faceted. Experiences of existing mine water energy schemes raise a number of technical challenges such as clogging and precipitation of pipe work, pumps and heat equipment (Banks *et al.* 2004, 2009; Gzyl *et al.* 2019), resource sustainability, thermal and chemical breakthrough (Preene and Younger, 2014; Verhoeven *et al.* 2014; Burnside *et al.* 2016 *a,b*) and optimal arrangements for abstraction-re-injection (Preene and Younger, 2014; Banks *et al.* 2017). Regulatory approvals and public engagement require an improved knowledge base on subsurface and surface environmental monitoring and impacts (e.g. Preene and Younger 2014 'environmental and regulatory risk'). For example, on the groundwater and surface water chemistry impacts (Banks *et al.* 2009; Burnside *et al.* 2016 *a,b*), stability of mine workings (Younger 2014, Todd *et al.* 2019) or potential movement of mine gas (Younger 2014). As an infrastructure designed for these kinds of mine energy challenges, the Glasgow Observatory comprises 12 boreholes, 4 research compounds, surface monitoring equipment and open data (Monaghan *et al.* 2019).

Whilst Dennehy *et al.* (2019) provide a comprehensive overview of drilling into abandoned mine workings, there is a paucity of literature on the exploration and uncertainties of drilling into highly variable legacy workings for mine water heat resources. Pre-drill prognosis of the state of collapse of a mine working and mine water reservoir (void, waste, fractured rock, intact coal) at a specific location are difficult to predict from legacy data, likely to vary on a metre-scale, yet critical as they strongly influence the hydraulic properties (e.g. Younger and Robins 2002) that are key for the mine water resource and its sustainability. In addition, Andrews *et al.* (2020a) illustrate sedimentation of coal breccias and laminated muds resulting from groundwater flow within a collapsing pillar and stall mine working, highlighting an additional time-dependent process that affects hydraulic properties of legacy mines and potential mine water resources. Thus, whilst mine workings are commonly well

mapped at abandonment, the knowledge base on how their condition has evolved since flooding is limited, with likely consequences for hydraulic connectivity and sustainable hydraulic yields.

Construction of the Glasgow Observatory provides a pre-drill to post-drill exemplar. This paper synthesises and interprets geological and borehole data through the exploration and appraisal stages and provides a basic characterisation of the anthropogenically-altered rock mass, including a mine water reservoir classification.

## Description of the Glasgow Observatory

The Observatory is located in an urban setting in Glasgow City and South Lanarkshire (Figure 2), with commonalities in its coal mining history, geology and legacy of industrial land use with other parts of the UK and beyond. It has proceeded through a four-year exploration and appraisal workflow (Figure 3; Starcher *et al.* 2021) and is at the scale of a small mine energy scheme, such as might supply a municipal or industrial building. Designed to anticipate future research, the infrastructure offers flexibility to test response to induced changes of flow, heat etc. that would not be possible within commercial schemes.

The majority of the Glasgow Observatory infrastructure is located at Cuningar Loop, Rutherglen (Figure 2, Table 1). Five boreholes are screened across the Glasgow Upper or Glasgow Main mine working or coal (Figure 4, Table 1) to depths of around 50 m and 85 m respectively (Barron *et al.* 2020 *a,b*; Monaghan *et al.* 2020 *a,b*; Starcher *et al.* 2020 *a,b*). The boreholes are arranged in a triangle to characterise depth and spatial variability in 3D over 10-100's m (Figure 2). A sixth borehole (GGA02) was drilled as a mine water borehole but encountered problems in the final stages of construction and is now a cased, sensor testing borehole to around 67 m depth (Monaghan *et al.* 2020c). The mine water boreholes are equipped with sensors for time-series monitoring of the subsurface. Downhole electrical resistivity tomography (ERT) sensors (Figure 5), fibre-optic cables for distributed temperature sensing (DTS) and hydrogeological data loggers have started to enable time-series monitoring to characterise physical, chemical and flow heterogeneities. Permanent infrastructure for the abstraction and re-injection of mine water and extraction or storage of heat is planned to be installed in four of the mine water boreholes in 2021.

Five boreholes at Cuningar Loop with drilled depths between 16 - 45 m are screened in shallow superficial deposits and bedrock above the Glasgow Upper mine working (Figure 4, Table 1; Elsome *et al.* 2020; Shorter *et al.* 2020 *a,b*; Walker-Verkuil *et al.* 2020 *a,b*). The boreholes record ongoing baseline environmental change, will provide evidence of any impacts from pumping mine water and

give an opportunity for developing new monitoring technologies. The boreholes are located in four fenced research compounds that provide space for the handling of borehole equipment and operation of surface monitoring systems (Sites 1,2,3, and 5; Figures 2, 5).

The deepest borehole at the Glasgow Observatory is a 199 m cored, unmined reference section at Dalmarnock, some 1.5 km WNW of Cuningar Loop (Figure 2). The borehole was geophysically logged and imaged and core-scans are available (Kearsey *et al.* 2019a). This borehole was fully cased in early 2019 and a string of five downhole seismometers provide baseline monitoring, feeding into the UK national seismic monitoring network. Baseline environmental monitoring of soil chemistry, soil gas, ground motion, surface and groundwaters has been ongoing since 2018. Open data available from [ukgeos.ac.uk](http://ukgeos.ac.uk) provides a growing body of data releases (e.g. Bateson and Novellino 2019; Barkwith *et al.* 2020; Fordyce *et al.* 2020) and time-series monitoring data over the 15+years lifetime of the Glasgow Observatory. Geological models are also available (Arkley 2019; Burkin and Kearsey 2019).

## Pre-drill geological and mining legacy datasets

Gathering and synthesis of geological, mining and hydrogeological legacy information prior to borehole drilling was critical in planning the borehole location, design and prognosed target intervals.

### Superficial and artificial deposits

The bedrock succession of eastern Glasgow is overlain by up to 40 m of glacial and post-glacial Quaternary deposits. The thick accumulations infill a broadly NW-SE trending channel of incised bedrock following the modern-day River Clyde (Browne and McMillan, 1989; Forsyth *et al.* 1996). The succession commonly comprises variable thicknesses of Devensian glacial till overlain by glacio-fluvial sand and gravel. Widespread clay and silt of post-glacial raised marine deposits are overlain by sand, gravel, clay and silt of estuarine and fluvial deposits (Browne and McMillan 1989; Forsyth *et al.* 1996; Finlayson *et al.* 2010). A range of modelling has been undertaken to represent the 3D distribution of the superficial deposits at city scale (Monaghan *et al.* 2014; Kearsey *et al.* 2015, 2019b) with an updated pre-drill model presented in Arkley (2019).

Made, filled and landscaped ground is widespread from a variety of prior industrial land use, in some places 10-15 m thick. Former land use and made ground at Cuningar Loop includes a water works

(northern end), colliery waste (southern end) and widespread up to c. 10 m thick cover of building demolition rubble added in the 1960's (Ramboll 2018a). At Dalmarnock, in the immediate vicinity of borehole GGC01, legacy boreholes indicated the made ground was expected to be around a metre thick. Several sites within 500 m of GGC01 are undergoing remediation of land contamination of the shallow subsurface (e.g. Bewley and Sojka 2013; Farmer *et al.* 1999) resulting from a multiplicity of former industrial land uses (Ramboll 2018b; Watson and Westaway 2020).

## **Bedrock**

The Glasgow Observatory is located on the western side of the Central Coalfield of the Midland Valley of Scotland, an area formerly extensively mined for coal (Clough *et al.* 1926; Forsyth *et al.* 1996). The area is underlain by the approximately 300 m thick Carboniferous Scottish Upper, Middle and Lower Coal Measures formations, comprising cyclical sedimentary sequences of sandstone, siltstone, mudstone, root-bearing paleosol ('seatearth') and coal (more detail in Forsyth *et al.* 1996; Hall *et al.* 1998). Interpreted to have been deposited in dominantly fluvio-deltaic coastal plain and coal swamp environments, rare beds with marine fossils signify occasional marine incursions (Forsyth *et al.* 1996). Fossil beds such as the Cambuslang Musselband (or 'Marble') and centimetre-scale ironstone interbeds and nodules form subsidiary lithologies.

The Glasgow Upper, Glasgow Ell and Glasgow Main coal seams are commonly the thickest in the area, frequently between 1-1.5 m in thickness (Hall *et al.* 1998). Mine plans and records from the Farme Colliery that extended under Cuningar Loop summarise the Glasgow Upper as commonly 1.3 m thick, soft and 'wet' due to underlying impermeable claystone (Findlay *et al.* 2020). A type section of the Glasgow Ell coal is 1.09 m thick and the Glasgow Main at 1.35 m thick.

Within 5 km of the Glasgow Observatory location, the bedrock succession is cut by normal and oblique-slip faults on a variety of trends. The NW-SE trending Dechmont Fault is a major, long-lived structure (Hall *et al.* 1998), and other WNW-ESE to W-E trending faults subdivide the succession into several kilometre-wide fault blocks (BGS 1992, 1993). Faults on similar trends to the larger structures, and N-S trending faults further cut the succession. Faulting dissects open folding within the strata. Situated north of an easterly-trending syncline cored with the Upper Coal Measures, the rocks at Cuningar Loop dip around 1-3° to the SW (BGS 1992, 2008; Glasgow Ell mine abandonment plan '1 in 60'). The city-scale, faulted 3D geological model (Monaghan *et al.* 2014; Kearsley *et al.* 2019b) was updated to a pre-drill bedrock and mine model by Burkin and Kearsley (2019) during definition/preliminary survey stages of the Glasgow Observatory.

## Mining history and borehole planning

Mining information was gathered from multiple sources, including datasets openly available via The Coal Authority online viewer and via inspection of The Coal Authority archives for additional records (plan scans, pumping records, shaft records). The British Geological Survey (BGS) also holds archives of coal information (borehole records, coal properties information), and industrial heritage publications which contain vital background information (Findlay *et al.* 2020). The knowledge of former miners, mine surveyors and engineers can inform how mines were left on abandonment and how they may have evolved since closure, exemplified at Heerlen (Mine Water Good Practice Guide, 2013). Mining information for the Glasgow Observatory benefitted from knowledge of a former central Scotland, Coal Board mining surveyor employed by BGS (e.g. McLean 2018). Within the 5 by 4 km area surrounding the Glasgow Observatory, mine abandonment plans from 1810–1934 record the workings of eight coal seams from the Middle and Lower Coal Measures formations. Extents, depths, mining type, stone and coal roadways etc. have been digitised by BGS from the mine abandonment plans and used in the geological and mine models of the area (Burkin and Kearsley 2019, Monaghan *et al.* 2014; Kearsley *et al.* 2019b).

Under the Cuningar Loop, seven coal seams were worked from the Farme Colliery between 1805–1928 (Findlay *et al.* 2020). A range of mining types are recorded on the mine abandonment plans including stoop (coal) and room (void) (pillar and stall) workings and ‘total extraction’ areas. The latter were marked as stoop and room workings on 1880’s plans followed by removal of the pillars (pillar ‘robbing’) by the 1930’s plans (Figure 6), as opposed to longwall or shortwall mining methods. In total extraction areas without roof support, collapse to goaf (fractured rock) is expected to have occurred close to the time of removal of the pillar support (NCB 1975). Pillars in the Glasgow Upper coal seam have a pillar width/height ratio of around 3 to 10. The access shafts for the Farme Colliery were located to the SSW of the Glasgow Observatory boreholes, adjacent to what is now Downiebrae Road (Figure 2). One of the mine shafts was grouted and plugged in 2013 (Ramboll 2018a, p. 36). Shaft ‘no 4 pit’ is situated 220 – 300 m to the east of the Glasgow Observatory boreholes, close to the River Clyde.

Legacy borehole records from Cuningar Loop (e.g. BGS borehole numbers NS66SW BJ579, BJ583, BJ631) indicate the presence of voids, fractured rock with cavities, loose coal, loose or packed waste and stowage. Stowage is a term used for material used for backfill of mine workings during mining, as means of waste disposal and roof support. Stowage is likely to include a range of altered and stained clast types. ‘Waste’ recorded on legacy borehole records may include stowage, but it may also be collapsed roof material (goaf) or floor heave material. No pumping records have been



located from the Farme Colliery or immediate vicinity. High and artesian water levels measured in boreholes penetrating the Glasgow Upper mine working are noted in some legacy data (e.g. NS66SW BJ579 in 1979), giving some clues about the hydraulic regime and notable for planning borehole drilling and construction.

Mine abandonment plans on several of the seams show that the Farme Colliery workings extended northwards under the River Clyde and were connected to a number of other collieries under the Clyde to the south-east (e.g. Haugh Pit, Westhorn). In turn these collieries were connected to the east, south and possibly west (e.g. Stonelaw, Eastfield pits; image of extents in Monaghan *et al.* 2017, p. 20). Thus, depending on final abandonment and collapse state, substantial potential hydraulic interconnectivity of mine workings exists over kilometres-scale.

The NW–SE trending fault shown on the BGS 1:10,000 scale geological map (BGS, 2008) at Cuningar Loop is derived from the abandonment plans through the seams (Figure 6, top right corner of each plan image). Smaller faults with throws of c.0.6 – 3 m on N, NW and WNW trends are common on the mine abandonment plans (Figure 6), but it is not clear if, or how many, of these smaller faults are connected between seams. There are a number of stone roads between seams (e.g. Glasgow Ell to Glasgow Main on the eastern side of Cuningar Loop), and former roadways within the coal workings are marked on a number of abandonment plans. The Glasgow Upper plan shows a number of ‘wants’ i.e. sandstone channel washouts of the coal, most notably a NNE-trending ‘want’ between Glasgow Observatory sites 1 and 3 (Figure 4). Mining records document a clean boundary to the sandstone want, the coal thickness doubled in some places at the side of the want, and stone roads across the want recorded a coarse, pebbly base (Findlay *et al.* 2020, p. 62-63).

Coal mining is not recorded in the mine abandonment plans for the site of the 199 m deep GGC01 borehole at Dalmarnock. However, based on plans to the east and shafts to the west, unrecorded mine workings were considered possible or probable, both on the Coal Authority online viewer and by BGS (Kearsey *et al.* 2019a). Possible mine workings were therefore considered when planning this borehole, which provides the cored and reference section for the Glasgow Observatory.

### ***Implications for borehole planning***

The pre-drill borehole planning for the Glasgow Observatory targeted areas of both stoop and room and total extraction mine workings. This contrasts with existing mine water energy schemes that target roadways and shafts (Verhoeven *et al.* 2014; Athresh *et al.* 2015; Burnside *et al.* 2016 ab; Banks *et al.* 2017) due to their likely very high hydrogeological yields for heat recovery. The rationale for the targets at the Glasgow Observatory included (a) lack of suitable land available over shafts and

roadways and (b) different types of mine working are favourable for a research infrastructure to characterise potentially differing responses within these types of workings that are spatially extensive across the UK. For example, the heat dispersion characteristics of a fractured rock mass or mine waste are likely to be important for heat storage research.

Three of the mine water boreholes were planned to target the uppermost worked coal seam, of the Glasgow Upper Coal at c.50 m. This is because for mine water heat resources, construction and operational costs are likely to be lower if the shallowest working is targeted, which may offset the gain of higher temperatures of deeper workings (e.g. Banks *et al.* 2017 note likely cost benefit of raising a pump to shallower levels). Three boreholes were also planned to target the third shallowest mineworking, of the Glasgow Main Coal at c. 85 m. The rationale was to provide depth variability, complexity in potential pathways for abstraction/re-injection and thermal breakthrough research. A significant consideration was also that the Glasgow Main Coal has a sandstone roof, meaning the mine working was thought more likely to be an open void or collapsed rock mass containing significant permeability. In contrast, the intervening Glasgow Ell Coal generally has a mudstone roof and was predicted to have more likely collapsed with resultant low permeability expected.

The error in georeferencing scans of old, cracked mine abandonment plans and the original surveying error was understood to be around 5 – 10 m in XY, larger than the scale of stoop and room workings recorded on the plan (contrast Figure 6a and 6b). This led to significant uncertainty that any particular borehole position would hit an intended target. Nevertheless, for a target in stoop and room workings the borehole was positioned apparently in a 'room' (GGA04). For a borehole targeting a deeper mine working, borehole positioning was in a 'stoop', to reduce drilling cost and risk (GGA05).

Environmental regulation and protection played a significant role in the design of the boreholes, along with scientific considerations. Agreed through the planning permission process and in discussion with the environmental regulator (Scottish Environment Protection Agency; SEPA), separate borehole casings were installed through the made ground, superficial deposits and bedrock sections of all the Glasgow Observatory boreholes at Cuningar Loop, with the annulus of the different casing sections grouted before the next section was drilled. This was to be done to prevent the mixing of groundwaters from different lithologies, which could occur if vertical flow paths were created during drilling. The boreholes were to be screened only across the target interval, with the annulus fully sealed with grout above the screen, so hydrogeological observations related only to the target interval. Finally, to preserve the in-situ conditions for scientific research, and to minimise any environmental impact should one mine working contain water of much poorer quality, the Glasgow

Upper and Glasgow Ell mine workings were planned to be sealed with a plug of grout before progressing to the Glasgow Main mine working target. This would be required until water chemistry samples taken from the mine workings indicated an interconnected mine water body.

## Results: borehole drilling and construction

Comprehensive descriptions of the borehole drilling, casing and grouting, the as-built design and the lithology and stratigraphy of each Glasgow Observatory borehole is detailed in Barron *et al.*, (2020 *a,b*), Elsome *et al.* (2020), Kearsey *et al.* (2019*a*), Shorter *et al.* (2020 *a,b*), Monaghan *et al.* (2020 *a,b,c*), Starcher *et al.* (2020 *a,b*), Walker-Verkuil *et al.* (2020 *a,b*). Some key aspects are summarised here.

All boreholes had the same initial drilling diameter of 880 mm (34  $\frac{3}{4}$  ") for the made ground section, which was drilled using a piling rig with auger. The superficial deposits and bedrock sections had progressively smaller drilling diameters, and the drilled diameter at total depth varied between environmental baseline monitoring and mine water boreholes (Table 1). The open-hole superficial and bedrock sections at Cuningar Loop used reverse circulation, rotary drilling as standard for good sample recovery and to prevent loss of flush into the mine workings. Direct circulation with rotary drilling and duplex drilling (drilling while casing) was used when difficulties were encountered, either with clogging of the bit in claystones, or in an unstable hole in sand and gravel within the superficial deposits (Table 1). The drilling rig used a collared drill string to run behind the bit, giving a stiffer bottom hole assembly and helping to produce straight and vertical boreholes. Verticality in the mine water boreholes was surveyed using a cased hole wireline inclination tool. All the mine water boreholes at Cuningar Loop were within two degrees of vertical, the base of the 199 m deep borehole GGC01 was 1.84 m from the vertical.

Steel was used for the made ground and superficial deposits casings and uPVC Boode casing was used for the screened sections and bedrock sections. The annulus of each casing section was grouted using either Ordinary Portland Cement (OPC), Tarmac Pozament SP/F6 mix (made ground and superficial casings) and SP/F6 or bentonite cement pellets (bedrock section) above a rubber annular seal topped with a bentonite plug (mine water boreholes) or a simple bentonite plug (superficial and bedrock boreholes). A pre-glued gravel pack was used in all boreholes except those in a mine working void, to prevent ingress of fines and rock pieces etc. that could clog the slotted screen. The gravel size was chosen to correspond to the screen slot size. After problems were encountered with borehole GGA02 (Monaghan *et al.* 2020c), an optical camera and caliper wireline

log were run in the open hole mine water boreholes to determine the character of the mine working, associated fracturing and placement of the annular seal. This working information was not part of the planned data collection. The risk of open hole instability, time and cost constraints meant a more comprehensive wireline log suite was not in scope.

Here we provide a synthesis integrating the twelve new boreholes with legacy data.

## **Results: post-drill lithology and stratigraphy**

### **Superficial deposits**

The thickness of made ground in the 11 Cuningar Loop boreholes varied from 7.5 – 9 m, and was 0.6 m in GGC01 at Dalmarnock (Figure 7). The composition at Cuningar Loop included brickwork, concrete sandstone cobbles and boulders, ashy sand, gravel, wood, clinker, glass, slate and plastic. This is consistent with the area being used for landfill following building demolition. Natural superficial deposits show thickness variability across Cuningar Loop from 26 – 40 m, though the precise position of the top of bedrock over weathered sandstone bedrock was difficult to ascertain in some boreholes (e.g. GGB05).

In the superficial deposits section, the returns records from GGA03r and GGA07 reflect a change in drilling method from reverse circulation to direct flush. This had a significant impact on the returns such that these records are not utilised in this synthesis (Figure 7). Below the made ground, the natural succession comprised a sand and clay unit and a sand and gravel unit interpreted as the Gourrock Sand Member. Three environmental baseline boreholes were screened at this interval. This unit was underlain by clay and silt of the Paisley Clay Member, up to 12 m thick. A c. 1 m thick sand and gravel interbed is notable in boreholes in the south and east of Cuningar Loop (e.g. GGB05).

Legacy boreholes record variable thicknesses, from 0.7 m to over 12 m, of diamicton, boulder clay or glacial till at the base of the superficial deposits in the southern half of Cuningar Loop (e.g. NS66SW SE17585 C3 and C5). At the northern end of the Loop, glacial till is not recorded, with up to c.18 m of sand and gravel above the top of bedrock (e.g. NS66SW BJ2463) interpreted as the Broomhouse Sand and Gravel Formation (Arkley 2019). The Glasgow Observatory boreholes encountered more sand and gravel and less glacial till than was prognosed, for example around 1 m of till interpreted in GGA01, compared with over 6 m in NS66SW BJ579 15 m away. Boreholes GGA04 and GGA05 located

10 m apart returned significantly different successions below the Paisley Clay Member. GGA04 returns were of nearly 12 m thick gravel and sand, whereas GGA05 encountered around 4 m of sand and gravel overlying 7 m of clay, silt, sand and gravel interpreted as glacial till. Taken together the legacy and new boreholes suggest a channelised sand and gravel deposit, interpreted as a southerly extension of the Broomhouse Sand and Gravel Formation. The sand and gravel caused some unexpected drilling problems (Starcher *et al.* 2021).

A similar succession of glacial till, fluvio-glacial sand and gravel, raised estuarine clay, and alluvial sand of 30.5 m thickness was observed in borehole GCC01 at Dalmarnock (Kearsey *et al.* 2019a). More widely, the superficial deposits succession across the Glasgow Observatory is typical of the Quaternary succession in the River Clyde valley.

### **Bedrock**

The bedrock sections of the Glasgow Observatory boreholes are typical of the Scottish Coal Measures Group comprising interbedded claystone, siltstone and sandstone with coal, palaeosols with roots, ironstone beds and nodules, and fossil beds (Kearsey *et al.* 2019a; Barron *et al.* 2020 a,b; Monaghan *et al.* 2020 b,c; Starcher *et al.* 2020 a,b; Figures 7, 8). Variability between boreholes is notable, for example the interval above the Glasgow Upper coal is commonly sandstone-dominated in legacy boreholes, GGA01 and GGA02. However, in GGA07 and GGA08 the interval was claystone-siltstone dominated (Figure 7), possibly representing overbank deposits to fluvial channels or interdistributary bays. The interval between the Glasgow Upper and Glasgow Ell coals is typically mudstone dominated, with a heterolithic interval including the Cambuslang Musselband between the Glasgow Ell and Glasgow Main coals (Figures 7, 8). The thickness of the coals shows some variability, for example the Glasgow Upper coal as recorded varied from 1.14 m in GGA04 to 1.7 m in GGA07, consistent with mining records and legacy boreholes.

## **Results: Post-drill mine workings**

### **Considerations for drilling practice**

Recognising mine workings when drilling and characterising them accordingly is evidently critical to realising a mine water resource. Open hole, reverse circulation rotary borehole drilling at the Glasgow Observatory utilised a range of features to identify mine workings (Table 2), in conjunction with an experienced drilling contractor. The characteristic features are similar to those listed by Dennehy *et al.* (2019, p. 317) for recording during open hole drilling of abandoned mine workings, though this was not published at the time of drilling. The mine workings prognosed were most

frequently identified by change in rate of penetration, character of rock chip returns and smell of H<sub>2</sub>S (Tables 2,3) or when coals were returned. Nevertheless, one instance of a packed waste was identified from an open-hole borehole optical camera log (GGA05, Glasgow Ell) and one mine working was not identified during drilling (GGA02 Glasgow Main). The large drill bit needed for the 406 mm wide diameter boreholes may have impeded recognition of tightly packed or fully-collapsed workings (Starcher *et al.* 2021). Lessons learnt during construction of the first mine water boreholes proved the benefit using a borehole camera and caliper log on the open hole prior to casing, to both categorise the mine water reservoir, place the screened section and identify a smooth rock wall for placing of the rubber annular seal (Starcher *et al.* 2021).

Sealing of the Glasgow Upper and Glasgow Ell mine workings in borehole GGA02 en-route to the Glasgow Main target took time (Monaghan *et al.* 2020c). The mine water chemistry results from the Glasgow Upper working in GGA02 and Glasgow Main working in GGA05 were critical in proving similar groundwater chemistries. This indicated an interconnected mine water body and meant during-construction sealing of the Glasgow Upper and Ell workings in later boreholes (GGA08) was not required for environmental protection and scientific reasons, saving time and cost.

### **Variability encountered in target mine working intervals**

The Glasgow Observatory boreholes penetrated mine waste, open voids, fractured rock and intact coal in areas indicated on the abandonment plans as total extraction or stoop and room workings (Table 3, Figures 7 – 9; see details Barron *et al.* 2020 *a,b*; Monaghan *et al.* 2020 *a,b,c*; Starcher *et al.* 2020 *a,b*). The variable character of the mine workings was not easily predicted from the mine abandonment plan. In contrast, the depths of the mine workings were well predicted by the mine abandonment plan spot heights (Table 3). The pre-drill borehole prognoses proved a good indicator for the depth of the Glasgow Upper and Glasgow Main workings. The first Glasgow Ell mineworking to be penetrated (GGA02) was around 6 m shallower than prognosed from the semi-regional model, but compatible with a mine spot height 30 m away, so updated prognoses were created for subsequent boreholes (Table 3). The knowledge gained on drilling into mine workings varied by seam and location:

*Glasgow Upper.* An area shown on the Glasgow Upper mine abandonment plan as ‘total extraction’ contains some intact coal pillars as well as voids and waste (GGA07, GGA08; Figures 7-9). Around 120 m away in a ‘total extraction’ area, a mine waste (stowage) was encountered (GGA01, GGA02). The areas of stoop and room workings on the abandonment plan encountered both coal and an interpreted fractured coal pillar (GGA05, GGA04 respectively) confirming that this coal had not been ‘robbed’. The main learnings from the six boreholes encountering the Glasgow Upper were that

there was more coal remaining as pillars than expected. Fracturing or disturbance above and below coal pillars is described below and in Table 3.

*Glasgow Ell.* The Glasgow Ell coal seam is documented as 1.1 m thick on the abandonment plan, yet the boreholes penetrated one open void (GGA02) and two packed wastes (GGA05, GGA08) all around 0.7 m thick, indicating collapse of the mine working from the original worked thickness. All boreholes were in zones marked as total extraction on the Glasgow Ell abandonment plan, and collapse may be prevalent due to weakness of the mudstone-dominated roof. On the borehole camera log the wastes appear as a tightly-packed breccia with mudstone matrix, with a migrated void 2 m above in GGA08 (Figure 9).

*Glasgow Main.* The abandonment plans indicate total extraction of the Glasgow Main coal. The mine workings were open voids with a sandstone roof and underlying wood/waste (GGA08) or disturbed zone (GGA05; Tables 2,3; Figure 9). There a number of former roadways marked on the abandonment plans within the total extraction area. The 3 m thick void-waste-wood returns and CCTV data from GGA08 indicated that a roadway had been penetrated with wooden supports still in place. In the third Glasgow Main borehole (GGA02), the mine working was not recognised during drilling and is interpreted as a clean collapse (Monaghan *et al.* 2020c).

The cored, reference borehole GGC01 at Dalmarnock returned intact coals, proving that there were not unrecorded mine workings within an area judged pre-drilling as having possible or probable workings (Kearsey *et al.* 2019a).

### **Mining-induced fracturing and disturbance**

Outcrops and opencast coal sites exposures highlight the complexity of natural faulting and fracturing in heterolithic Carboniferous successions (e.g. Andrews *et al.* 2020b), strongly influencing groundwater flow (O Dochartaigh *et al.* 2015). Mine plans themselves form a valuable source of fault information (Rippon 1984; Walsh and Watterson 1988; Huggins *et al.* 1995; Monaghan 2017). In the case of the Cuningar Loop, mine plans record c.0.6 – 3 m throw faults on N, NW and WNW trends that were mined across. Natural discontinuities have also been documented in the cored Glasgow Observatory borehole GGC01 with numerous thin veins that exploited the coal cleat system and sparse discontinuities in other lithologies including mineralised and non-mineralised joints, slip surface and faults (Kearsey *et al.* 2019a). A subset of the discontinuities were unsealed and potentially transmissive, commonly with brittle fracturing in sandstone and slip-surfaces in mudstone (Kearsey *et al.* 2019a).

Mining causes an additional complex series of anthropogenically-generated voids, fractures and collapses. The character and migration of fractures and collapses in relation to subsidence have been extensively covered in the mining literature, with control by style of mining, rock lithologies and thicknesses, natural fault/fracture system, stress fields etc. (e.g. NCB 1975; Healy and Head 1984; summary in Mason *et al.* 2019). The effects on groundwater flow and flow properties (Younger and Adams), and any evolution through time for legacy mines is less extensively documented, particularly the implications for mine water heat abstraction and heat storage (Andrews *et al.* 2020a). An initial summary of the observed fractures and disruption observed in the Cuningar Loop mine water boreholes from adjacent to the mine workings is therefore important for future hydrogeological testing, conceptual and numerical modelling of mine water resources.

Borehole camera and open hole caliper logs from five of the boreholes indicate that mining-induced subvertical fractures and disrupted zones are restricted to within 1 – 2 m above and below the mine workings (Table 3, Figure 9). Fracturing and disturbance above mine workings is of variable character. In GGA05 where the borehole is interpreted to have drilled through an intact coal pillar, the borehole camera log appears to show open fractures along horizontal bedding planes for around 6 m above the Glasgow Upper coal (Table 3, Figure 9). In GGA04 and GGA08 where the borehole has drilled through what is interpreted as a fractured/disrupted pillar and part void/waste, the roof is disrupted for around 1 – 1.5 m above the Glasgow Upper mine working. Fracturing in the mudstone roof of the Glasgow Upper pillar/void is not easily discerned in borehole GGA07.

Where a packed waste was encountered in the mine working, fracturing and void migration are observed for around 2 m above the roof strata of the Glasgow Ell mine working (GGA05, GGA08, Table 3, Figure 9). Finally, where a clear void is encountered in the Glasgow Main mine working, the sandstone roof strata appear undisturbed in GGA05 and with some fracturing for 1-2 m above the sandstone roof in GGA08 (Table 3, Figure 9).

The mine workings' floor zone shows 1 – 2 m of fracturing beneath the Glasgow Upper coal pillar and Glasgow Ell packed waste in borehole GGA05 (Figure 9). The floor of the Glasgow Upper mine working (a grey claystone) appears visibly disrupted beneath an intact pillar (GGA05) or part pillar/waste (GGA08), typically with a caliper kick of around 0.2 m below the floor (GGA04, GGA05, GGA08). Minor losses during annulus grouting of this interval were observed in GGA05. This could be a result of floor heave and lift of this weak lithology through swelling upon flooding of the mine and/or induced strains caused by 'pillar punching', both common phenomena being recognised in mine workings (Healy and Head 1984; Wuest 1992; Mason *et al.* 2019 page 129; Mo *et al.* 2020). The floor of the Glasgow Main mine working in borehole GGA05 exhibits 1.7 m of broken rock and a



basal caved zone (Figure 9) that was not detected or interpreted as mine waste from rock chip returns of siltstone and very fine sandstone. This disrupted section is tentatively interpreted to have been affected by floor lift or heave.

In order to gain a first understanding of whether this qualitative description of mining-induced fracturing and disturbance in the Glasgow boreholes is representative of the rock mass as a whole, comparisons can be made with the literature. During active mining in the UK, an observation-based 'ten times the height of the mine working rule of thumb' was used to estimate acceptable bedrock cover thicknesses against migration of mine working voids/collapses to surface (Mason *et al.* 2019). However, the rule of thumb was varied between 2 – 7 times the worked thickness, or greater than 10 times, depending on type of roof strata, residual voidage and several other factors (Mason *et al.* 2019). Andrews (2019) documents the majority of deformation 5 – 15 m above collapsed c.2 m thick pillar and stall workings exposed in an opencast site, with some faulting interpreted to around 50 m above the collapsed workings. Well-established numerical methods estimating collapse mechanisms, fracturing and subsidence due to mining also exist (NCB 1975; summaries in Healy and Head 1984; Mason *et al.* 2019), highlighting the variability in mining-induced disturbance with strong control by lithology, mining method, number of seams mined etc. In the Glasgow Observatory boreholes, the Glasgow Upper mine working varies from 1.15 – 1.7 m thick, so the 'ten times rule of thumb' is substantially larger than the 1 – 2 m, possibly up to 6 m, zone of disturbance observed. However, the Glasgow Upper mine workings have not collapsed where drilled, with intact pillars and packed waste/stowage. The Glasgow Ell mine working has partially collapsed onto a packed waste with fracturing and void migration for 2 m in GGA08, smaller than the 'rule of thumb' would predict. Further evaluation is needed to understand whether the Glasgow Observatory boreholes likely typify the mining-induced disturbance around worked seams at Cuningar Loop based on the particular rock characteristics, or whether the borehole observed disturbance is not representative of the wider rock mass.

In summary, the borehole observations from the Glasgow Observatory indicate there is commonly, but not always, a 1 – 2 m volume of rock mass above and below mine workings with properties significantly affected by fracturing or deformation. Possible implications for hydraulic properties include inclusion of fracture-dominated flow adjacent to pipe flow (voids) or porous media flow (loosely packed wastes or floor heave), adding to the overall hydraulic conductivity and storativity of the anthropogenically-altered rock mass. Increased hydraulic conductivity and storativity may in turn have implications for geomechanical, geochemical and geomicrobiological properties and evolution that have yet to be fully understood. For heat storage applications, the fracturing and deformation

zones adjacent to the mine working may form discontinuities useful for heat dispersion and heat recovery, adjacent to the high permeability mine working. Additional work is needed to better characterise the rock mass at field scale and to understand the processes that may enhance or reduce hydraulic conductivity since mine closure.

### **Hydrogeological borehole testing**

Having constructed the Glasgow Observatory boreholes, initial testing of the hydrogeological yields and responses was made to appraise future research uses and permanent heat abstraction and re-injection infrastructure. The outcomes were critical, as for a mine water borehole, the yields and aquifer properties amount to success or failure for the resource.

The initial resource appraisal began during the construction stages, firstly that the boreholes all encountered flooded mine workings and that mine water levels were commonly 1–3 m below surface (Barron *et al.* 2020 *a,b*; Monaghan *et al.* 2020 *b,c*; Starcher *et al.* 2020 *a,b*). Secondly, initial indications of high yields were gleaned from borehole flushing and cleaning during construction, for example 38m<sup>3</sup> was air-lifted from borehole GGA05 Glasgow Main mine working in 45 minutes (Barron *et al.* 2020*b*), proving a large yield before more structured test pumping.

Test pumping was undertaken after all borehole construction had been completed to ensure that the groundwater regime was not affected by those activities (24 days minimum separation). It comprised 5-hour step and constant rate pumping tests on ten boreholes, including groundwater pressure, temperature and conductivity monitoring of surrounding mine water and environmental baseline boreholes. Full results are reported in Shorter *et al.* (2021). For the mine water boreholes, the majority of the 5-hour step tests pumped at c.5/10/15/20/25 L/s and the majority of the 5-hour constant rate tests were pumped at a maximum of 20 L/s. The length and rate of test pumping was constrained by water disposal. Geochemical analysis of mine water during borehole construction proved the groundwater to be suitable for disposal to the River Clyde and a SEPA discharge licence was granted for volumes of up to 369 m<sup>3</sup> per day and maximum rate of 20 L/s after passing through tanks to allow settling of suspended solids.

Monitoring of water level recovery after the test pumping and time-series data from the downhole hydrogeological data loggers provides more information on the initial resource characterisation and a basic understanding of the connectivity within the mine water and groundwater system (full results in Shorter *et al.* 2021). In the environmental baseline boreholes, initial monitoring has recorded variable water levels and variable yields from test pumping. In four of the mine water boreholes (GGA01, GGA05, GGA07, GGA08) flow rates of 20 L/s with limited drawdown between

1.49–4.24 m and temperatures around 12°C were achieved during 5-hour constant rate test pumping. Good connectivity within each of the Glasgow Upper and Glasgow Main mine workings, and a response in the Glasgow Upper with pumping of the Glasgow Main mine working was observed from water level responses (Shorter *et al.* 2021). This is promising for discerning responses during future research at the Glasgow Observatory on experimental timescales, with more complex linkages between different depth mine workings being useful for research on thermal breakthrough and tracers.

## Discussion

### Mine water reservoir classification

Borehole drilling at the Glasgow Observatory encountered a range of flooded mine workings from open voids, loose and packed waste to fractured rock mass, that exert influence on the hydrogeological (hydraulic) properties and therefore the recoverable mine water resource. Here we propose reservoir classifications (Figure 10a -h).

Open voids penetrated within total extraction areas of the Glasgow Main mine working (GGA05, GGA08; Figure 10e) and a void adjacent to a coal pillar in the Glasgow Upper mine working (GGA07) proved high yields on initial test pumping. The 'open void' reservoir classification is similar to shafts and roadways that are commonly targeted for mine water schemes (Verhoeven *et al.* 2014; Athresh *et al.* 2015; Burnside *et al.* 2016 *a,b*; Banks *et al.* 2017) and would appear to be the most promising for an economic mine water heat abstraction resource. Longer duration pumping is required to understand the local-regional connectivity and sustainability of the 'open void' reservoir at the Glasgow Observatory.

High yields were obtained from test pumping of a mining waste (stowage) reservoir classification (Figure 10g) in GGA01 and with similar indications in GGA02 from an initial airlift during construction. These boreholes penetrate an area of total extraction area on the mine abandonment plan, highlighting that depending on recharge and connectivity, there is resource potential in spatially extensive areas, away from shafts and roadways. The properties of mining waste, stowage, collapsed roof material (goaf), or floor lift/heave material are likely to be very variable depending on lithology, groundwater flow, collapse and sedimentation processes since mining ended etc. (Figure 10f,g,h), with more tightly packed wastes with smaller yields, perhaps offering resource potential for heat storage.

The fractured rock mass around or inside deformed coal pillars, or where there has been clean collapse of a mine working, or surrounding the mine working could also be considered types of mine water reservoir (Figure 10a,d). Borehole GGA04 is interpreted with a fractured sandstone roof and possibly a partially collapsed pillar. Initial 5-hour test pumping resulted in a yield of 15 L/s but with greater 20.97 m drawdown than in the other mine water boreholes (Starcher *et al.* 2020a). Boreholes penetrating this type of fractured rock mine water reservoir may form a resource for small-scale schemes, or may have potential for heat storage as they likely have enhanced transmissivity compared to unmined bedrock but not so great that heat would be dispersed too widely.

These initial results from the Glasgow Observatory highlight that whilst there is great variability in mine water reservoir types, there is resource potential to be investigated within the spatially-extensive stoop and room and total extraction mined areas underlying UK towns and cities, as well as the more spatially-restricted roadways and shafts. This is important in giving far greater spatial flexibility, as land may not be available, or heat demand not present at the locations of shafts and roadways. Boreholes or areas with relatively low yields, low connectivity and recharge may offer heat storage potential.

### **Exploration risk in locating mine water boreholes**

In the same way that uncertainties in lithological heterogeneity, structural configuration and fluid flow pathways form risks for drilling successful conventional exploration wells for oil and gas or for groundwater, the same subsurface variabilities form risks for mine water boreholes. As discussed above, additional uncertainty comes from the complexity of the mine water reservoir and its evolution since mine closure. However, in contrast to other resources, mine abandonment plans, pumping records and historical knowledge provide greater certainty in terms of the resource location (extent and depth) and likely reservoir typologies. Given mine water heat technology is not widely developed, there are limited data available in the public domain on the 'success rates' of mine water boreholes in the UK, nor is there a framework for evaluating 'success' (since a borehole unsuitable for heat abstraction may be suitable for re-injection, monitoring or heat storage). Five of the six mine water boreholes at the Glasgow Observatory could be classified as successful in that they are screened across the planned mine working interval with proved yields on initial hydrogeological testing. Longer duration pumping and additional hydrogeological testing would further quantify the boreholes' 'success'. The sixth borehole (GGA02) encountered problems during annulus grouting resulting in it being a 'dry' sensor testing hole. Prior to those problems, two mine workings were recognised, but the Glasgow Main mine working target interval was not recognised

during drilling, the rock chip returns indicating a presumed clean collapse of the sandstone roof (Monaghan *et al.* 2020c).

Lessons learned during the development of the Glasgow Observatory, based on the above synthesis of pre-drilling understanding and construction phase data, include:

- (a) The uncertainty in georeferencing old, creased mine abandonment plans can be greater than the metre-scale variability of stooop (coal) and room (void) workings, making it very difficult to locate a borehole to penetrate either target with certainty. A dynamic drilling program allowing for responsive decisions is likely to increase success and reduce costs. For example, if some boreholes are planned for deeper workings and a stooop (intact coal) is encountered, carry on drilling. If a room (void) or void and loosely packed waste are encountered, make that the target interval for that borehole;
- (b) Areas marked on the mine abandonment plan as 'total extraction' penetrated a large number of mine water reservoir classifications (open void, waste, fractured rock, clean collapse). With the exception of a void/wood/waste interpreted as a roadway on the abandonment plan, the variability was not predictable;
- (c) More intact coal pillars were encountered than expected in an area marked as 'total extraction'. This is contrary to predictions of former miners and mine surveyors that in older mines more coal was taken or 'robbed' than was recorded;
- (d) For these open-hole, relatively wide-diameter boreholes, use of a borehole optical camera and caliper log was critical in characterising the mine water reservoir type, height and in reducing borehole construction risk (e.g. placing of the screened section and rubber annular seal). Cored boreholes could provide similar information, though with less certainty on accurate depths if core recovery was poor, or on changes in the in-situ mine working condition as a result of drilling .

Success rates for mine water boreholes are likely to vary dependent on the age and quality of mine abandonment plans, the depth to mine workings and the available hydrogeological information. With the available pre-drill information at the Glasgow Observatory location and known variabilities proved in the mine water reservoir from legacy boreholes, a near 100% 'success' rate for mine water boreholes to encounter voids was not expected. The Glasgow Observatory experience has shown drilling programmes designed to be responsive to conditions encountered during drilling are likely to be beneficial. Other approaches might include the drilling of narrow diameter preliminary boreholes (IGA and IFC 2014), however given the metre-scale variability of mine workings, subsequent appraisal boreholes would need to be co-located. Surface-based geophysical survey techniques may

offer useful insights (e.g. microgravity, electromagnetic, magnetic, electrical resistivity tomography or ground penetrating radar surveys in Dennehy *et al.* 2019), however these were not utilised pre-drill in the Glasgow Observatory due to the building rubble and foundations in the thick made ground and 30 – 40 m thick superficial deposits.

## Conclusions

Boreholes at a subsurface observatory for mine water heat and heat storage research in Glasgow penetrated made ground, a thick sequence of superficial deposits, bedrock and mine workings at depths of around 50 – 85 m . The bedrock succession exhibited typical heterogeneity of the Scottish Coal Measures Group, whilst glacial to post-glacial superficial deposits proved more sand- and gravel-dominated than prognosed.

Whilst the depth and flooded nature of mine workings was reliably predicted by 1930's mine abandonment plans and legacy boreholes, we document some of the challenges in predicting legacy mine workings and exploration risks. Mine water reservoir classifications proved include open water-filled voids, waste-filled mine workings, coal pillars and the fractured rock mass. The reservoir extends beyond the mine working through 1 – 2 m zones of fracturing and disturbance. Longer duration pumping is required, but initial hydraulic yields with limited drawdown highlight that 'stoop and room' and 'total extraction' mined areas offer potential for mine water heat and heat storage resources. With a spatially extensive footprint across former UK coalfields, these types of legacy mine working allow for greater flexibility in locating boreholes than shafts and open roadways, so classifying and characterising the resource potential is important. With much still to be investigated on the hydraulic properties and thermal resources of flooded coal mines, this pre- and post-drill geological synthesis of drilling into mines for the Glasgow Observatory boreholes forms a basis for future work, increasing the evidence base around mine water energy for decarbonising heating and storage towards net-zero carbon emission targets.

## References

- Abesser, C. 2020. Deep impact: unlocking the potential of geothermal energy for affordable, low-carbon heating in the UK. *British Geological Survey Science Briefing Note*. <https://www.bgs.ac.uk/download/science-briefing-note-deep-geothermal/>
- Adams, C. Monaghan, A. and Gluyas, J. 2019. Mining for heat. *Geoscientist*, **29**:4, 10-15, <https://doi.org/10.1144/geosci2019-021>

- Andrews, B.J. 2019. *The effect of lithology, sub-bed scale heterogeneities, and mechanical stratigraphy on fault and fracture properties in coal bearing sequences.*, Unpublished PhD thesis, University of Strathclyde.
- Andrews B.J., Cumberpatch, Z.A., Shipton, Z.K. and Lord, R. 2020a. Collapse processes in abandoned pillar and stall coal mines: Implications for shallow mine geothermal energy. *Geothermics*, **88**, <https://doi.org/10.1016/j.geothermics.2020.101904>.
- Andrews, B.J., Shipton, Z.K., Lord, R. and McKay, L. 2020b. The growth of faults and fracture networks in a mechanically evolving, mechanically stratified rock mass: a case study from *Spireslack Surface Coal Mine, Scotland Solid Earth*, **11**, 2119–2140, <https://doi.org/10.5194/se-11-2119-2020>
- Arkley, S. 2019. Model metadata report for the Glasgow Geothermal Energy Research Field Site superficial deposits model. *British Geological Survey Open Report*, OR/18/064, 50pp, <http://nora.nerc.ac.uk/id/eprint/524556/>
- Athresh, A.P., Al-Habaibeh, A., Parker, K. 2015. Innovative approach for heating of buildings using water from a flooded coal mine through an open loop based single shaft GSHP system, *Energy Procedia*, **75**, 1221–1228, doi:10.1016/j.egypro.2015.07.162
- Bailey, M.T., Gandy, C.J., Watson, I.A., Wyatt, L.M. and Jarvis, A.P. 2016. Heat recovery potential of mine water treatment systems in Great Britain. *International Journal of Coal Geology*, **164**, 77-84, <https://doi.org/10.1016/j.coal.2016.03.007>
- Banks, D., Skarphagen, H., Wiltshire, R. and Jessop, C. 2004. Heat pumps as a tool for energy recovery from mining wastes. In: Giere, R. and Stille, P. (eds), *Energy, Waste and the Environment: a Geochemical Perspective*. Geological Society, London, Special Publications, **236**, 499– 513.
- Banks, D., Fraga-Pumar, A. and Watson, I. 2009. The operational performance of Scottish minewater-based ground source heat pump systems. *Quarterly Journal of Engineering Geology and Hydrogeology*, **42**:3, 347-357.
- Banks, D., Athresh, A., Al-Habaibeh, A. and Burnside, N. 2017. Water from abandoned mines as a heat source: practical experiences of open and closed-loop strategies, United Kingdom. *Sustainable Water Resources Management*, **5**, 29-50, <https://doi.org/10.1007/s40899-017-0094-7>
- Barkwith, A., Lister, B., Taylor-Curran, H., Hannis, S., Shorter, K., Walker-Verkuil, K., Kirk, K., Smith, D. and Monaghan, A. 2020. Data release notes : UK Geoenergy Observatories Glasgow Geothermal Energy Research Field Site (GGERFS) ground gas, 2018 and 2019 surveys. *British Geological Survey Open Report*, OR/20/037, 16pp, <http://nora.nerc.ac.uk/id/eprint/528737/>
- Barron, H.F., Starcher, V., Walker-Verkuil, K., Shorter, K.M. and Monaghan, A.A. 2020a. Mine water characterisation and monitoring borehole GGA08, UK Geoenergy Observatory, Glasgow. *British Geological Survey Open Report*, OR/20/028, 35pp, <http://nora.nerc.ac.uk/id/eprint/528081/>
- Barron, H.F., Starcher, V., Monaghan, A.A., Shorter, K.M. and Walker-Verkuil, K. 2020b. Mine water characterisation and monitoring borehole GGA05, UK Geoenergy Observatory, Glasgow. *British Geological Survey Open Report*, OR/20/025, 35pp. <http://nora.nerc.ac.uk/id/eprint/528052/>
- Bateson, L. and Novellino, A. 2019. Glasgow Geothermal Energy Research Field Site :ground motion survey report. *British Geological Survey Open Report*, OR/18/054, 35pp, <http://nora.nerc.ac.uk/id/eprint/524555/>
- Bewley, R.J.F. and Sojka, G. 2013. In situ deliverability trials using calcium polysulphide to treat chromium contamination at Shawfield, Glasgow. *Technology Demonstration Project Bulletin*, **30**. London: Contaminated Land: Applications in Real Environments (CL:AIRE).
- Brabham, P., Manju, M., Thomas, H.T., Farr, G., Francis, R., Sahid, R., and Sivachidambaram, S. 2019. The potential use of mine water for a district heating scheme at Caerau, Upper Llynfi valley, South Wales, UK. *Quarterly Journal of Engineering Geology and Hydrogeology* **53**, 145-158, <https://doi.org/10.1144/qjgeh2018-213>

- British Geological Survey. 1992. *Airdrie. Scotland Sheet 31W*. Solid Geology. 1:50,000. (Keyworth, Nottingham: British Geological Survey.)
- British Geological Survey. 1993. *Glasgow. Scotland Sheet 30E*. Solid Geology. 1:50,000. (Keyworth, Nottingham: British Geological Survey.)
- British Geological Survey. 2008. *Rutherglen. Scotland Sheet NS66SW*. Bedrock Geology. 1:10,000. (Keyworth, Nottingham: British Geological Survey.)
- Browne, M.A.E, and McMillan, A.A. 1989. Quaternary geology of the Clyde Valley. *British Geological Survey Research Report*, SA/89/1.
- Burkin, J. and Kearsey, T. 2019. Model metadata report for Glasgow Geothermal Energy Research Field Site bedrock model. *British Geological Survey Open Report*, OR/18/053, 18pp, <http://nora.nerc.ac.uk/id/eprint/522737/>
- Burnside, N.M., Banks, D. and Boyce, A.J. 2016a. Sustainability of thermal energy production at the flooded mine workings of the former Caphouse Colliery, Yorkshire, United Kingdom. *International Journal of Coal Geology*, **164**, 85–91, doi:10.1016/j.coal.2016.03.006.
- Burnside, N.M., Banks, D., Boyce, A.J. and Athresh, A. 2016b. Hydrochemistry and stable isotopes as tools for understanding the sustainability of thermal energy production from a 'standing column' heat pump system: Markham Colliery, Bolsover, Derbyshire, UK. *International Journal of Coal Geology*, **165**, 223–230, doi:10.1016/j.coal.2016.08.021
- Clough, C.T., Hinxman, L.W., Wright, W.B., Anderson, E.M., and Carruthers, R. G. 1926. The economic geology of the Central Coalfield of Scotland, description of area V, Glasgow East, Coatbridge and Airdrie. *Memoir of the Geological Survey of Scotland*.
- Coal Authority (online, accessed November 2020). Geothermal energy from abandoned coal mines, <https://www2.groundstability.com/geothermal-energy-from-abandoned-coal-mines/>
- CCC (Committee on Climate Change), Net Zero: The UK's contribution to stopping global warming. 2019. <https://www.theccc.org.uk/wp-content/uploads/2019/05/Net-Zero-The-UKs-contribution-to-stopping-global-warming.pdf>
- Dennehy, J.P., Culshaw, M.G., Ricketts, G.A., Digby, A.J., Arthur, J.C.R. and Chiverrell, C.P. 2019. Site Investigation 2- ground investigation. Parry D.N. and Chiverrell C.P., Chapter 12, (eds). *Abandoned Mine Workings Manual, CIRIA C758*, 298-345, ISBN 978-0-86017-765-4
- Elsome, J., Walker-Verkuil, K., Starcher, V., Barron, H.F., Shorter, K.M., Monaghan, A.A. 2020. Environmental baseline characterisation and monitoring borehole GGB04, UK Geoenergy Observatory, Glasgow., *British Geological Survey Open Report*, OR/20/030, 22pp, <http://nora.nerc.ac.uk/id/eprint/528083/>
- Farmer, J.G., Graham, M.C., Thomas, R.P., Licon-Manzur, C., Paterson, E., Campbell, C.D., Geelhoed, J.S., Lumsdon, D.G., Meeussen, J.C.L., Roe, M.J., Conner, A., Fallick, A.E. and Bewley, R.J.F. 1999. Assessment and modelling of the environmental chemistry and potential for remediative treatment of chromium-contaminated land. *Environmental Geochemistry and Health*, **21**, 331-337.
- Farr, G., Sadasivam, S, Manju, M., Watson, I.A. and Thomas, H.R. 2016. Low enthalpy heat recovery potential from coal mine discharges in the South Wales Coalfield. *International Journal of Coal Geology*, **164**, 92-103, <https://doi.org/10.1016/j.coal.2016.05.008>
- Farr, G., Busby, J., Wyatt, L., Crooks, J., Schofield, D.I. and Holden, A. 2020. The temperature of Britain's coalfields. *Quarterly Journal of Engineering Geology and Hydrogeology*, **109**, <https://doi.org/10.1144/qjgeh2020-109>
- Findlay, C., McDonald, B. and Cunningham, J. 2020. A History of Coal Mining in Rutherglen and Cambuslang. Rutherglen Heritage Society, 198pp.
- Finlayson, A., Merritt, J., Browne, M., Merritt, J., McMillan, A. and Whitbread, K. 2010. Ice sheet advance, dynamics, and decay configurations: evidence from west central Scotland. *Quaternary Science Reviews*, **29**:7–8, 969–988, <https://doi.org/10.1016/j.quascirev.2009.12.016>



- Fordyce, F.M., Shorter, K.M., Vane, C.H., Gowing, C.J.B., Hamilton, E.M., Kim, A.W., Everett, P.A., Marchant, B.P. and Lister, T.R. 2020. UK Geoenery Observatories, Glasgow environmental baseline soil chemistry dataset. *British Geological Survey Open Report*, OR/19/062, 77pp, <http://nora.nerc.ac.uk/id/eprint/527798/>
- Forsyth, I.H., Hall, I.H.S., McMillan, A.A., Arthur, M.J., Brand, P.J., Graham, D.K. and Robins, N.S. 1996. Geology of the Airdrie district: *Memoir of the British Geological Survey*, Sheet 31W (Scotland). ISBN 011884508X
- Gillespie, M.R., Crane, E.J. and Barron, H.F. 2013. Study into the potential for deep geothermal energy in Scotland: Volume 2, *British Geological Survey Commissioned Report*, CR/12/131. Scottish Government Project Number AEC/001/11. ISBN: 9781782569862 <https://www2.gov.scot/resource/0043/00437996.pdf>
- Gluyas, J.G., Adams, C.A., Busby, J.P., Craig, J., Hirst, C., Manning, D.A.C., McCay, A., Narayan, N.S., Robinson, H.L., Watson, S.M., Westaway, R. and Younger, P.L. 2018. Keeping warm: a review of deep geothermal potential of the UK. *Proceedings of the Institution of Mechanical Engineers, Part A: Journal of Power and Energy* **232**: 1, 115-126, DOI: 10.1177/0957650917749693
- Gluyas, J., Crossland, A. and Adams, C. 2019. (online, accessed November 2020), 36bn GWh: the "limitless" geothermal from old UK coal mines, <https://energypost.eu/36bn-gwh-the-limitless-geothermal-from-old-uk-coal-mines/>
- Gzyl, G., Głodniokm, M., Janson, E., Łabaj, P., Markowska, M., Siodłak, L., Skalny, A., Zawartka, P., Zgórska, A., Loredo, C., Loredo, J., Roqueñí, N., Fernández, A P., García, A G., Banks, D., Boyce, A., Burnside, N., Younger, P., Parker, K., Al-Habaibeh, A., Athresh, A., Hyria, A. 2019. Low-Carbon After-Life: sustainable use of flooded coal mine voids as a thermal energy source - a baseline activity for minimising post-closure environmental risks (LoCAL) Accessed 16/12/2020 <https://op.europa.eu/en/publication-detail/-/publication/2a348f71-4479-11e9-a8ed-01aa75ed71a1>
- Hall, I.H.S., Browne, M.A.E. and Forsyth, I.H. 1998. Geology of the Glasgow district. *Memoir of the British Geological Survey*, Sheet 30E (Scotland). ISBN 0-11-884534-9.
- Healy, P.R. and Head, J.M. 1984. *Construction Over Abandoned Mine Workings*. CIRIA Special Publication **32**, 94pp ISBN 9780860172185.
- HM Government, The Clean Growth Strategy. 2018. [https://assets.publishing.service.gov.uk/government/uploads/system/uploads/attachment\\_data/file/700496/clean-growth-strategy-correction-april-2018.pdf](https://assets.publishing.service.gov.uk/government/uploads/system/uploads/attachment_data/file/700496/clean-growth-strategy-correction-april-2018.pdf)
- HM Government 2020. Powering our Net-Zero Future, Energy White Paper, CP 337. ISBN 978-1-5286-2219-6 [https://assets.publishing.service.gov.uk/government/uploads/system/uploads/attachment\\_data/file/945899/201216\\_BEIS\\_EWP\\_Command\\_Paper\\_Accessible.pdf](https://assets.publishing.service.gov.uk/government/uploads/system/uploads/attachment_data/file/945899/201216_BEIS_EWP_Command_Paper_Accessible.pdf)
- Huggins, P., Watterson, J., Walsh, J. J. and Childs, C. 1995. Relay zone geometry and displacement transfer between normal faults recorded in coal-mine plans. *Journal of Structural Geology*, **17**, 1741-1755.
- IGA and IFC. 2014. Best Practices Guide for Geothermal Exploration Copyright © 2014 IGA Service GmbH c/o Bochum University of Applied Sciences (Hochschule Bochum) Accessed 16/12/2020, <http://documents1.worldbank.org/curated/en/190071480069890732/pdf/110532-Geothermal-Exploration-Best-Practices-2nd-Edition-FINAL.pdf>
- Jessop, A. 1995. Geothermal energy from old mines at Springhill, Nova Scotia, Canada. In: Barbier, E. (ed) *Proceedings of World Geothermal Congress 1995* (Florence, Italy, 18th–31st May 1995), *International Geothermal Association*, 463–468.
- Kearsey, T., Williams, J., Finlayson, A., Williamson, P., Dobbs, M., Marchant, B., Kingdon, A. and Campbell, S.D. 2015. Testing the application and limitation of stochastic simulations to predict the lithology of glacial and fluvial deposits in Central Glasgow, UK. *Engineering Geology*, **187**, 98 – 112, 10.1016/j.enggeo.2014.12.017
- Kearsey, T., Gillespie, M., Entwisle, D., Damaschke, M., Wylde, S., Fellgett, M.; Kingdon, A., Burkin, J., Starcher, V., Shorter, K., Barron, H., Elsome, J., Barnett, M., and Monaghan, A. 2019a. UK

- Geoenergy Observatories Glasgow: GGC01 cored, seismic monitoring borehole – intermediate data release. *British Geological Survey Open Report*, OR/19/049 36pp, <http://nora.nerc.ac.uk/id/eprint/525009/>
- Kearsey, T.I., Whitbread, K., Arkley, S.L.B., Finlayson, A., Monaghan, A.A., McLean, W.S., Terrington, R.L., Callaghan, E.A., Millward, D. and Campbell, S.D.G. 2019b. Creation and delivery of a complex 3D geological survey for the Glasgow area and its application to urban geology. *Earth and Environmental Science Transactions of The Royal Society of Edinburgh*, **108**: 2-3, 123-140, <https://doi.org/10.1017/S1755691018000270>
- Lanchester Wines website. Accessed May 2021 <https://www.lanchesterwines.co.uk/what-we-do/sustainability/>
- Loredo, C., Ordóñez, A., Garcia-Ordiales, E., Álvarez, R., Roqueña, N., Cienfuegos, P., Peña, A. and Burnside, N.M. 2016. Hydrochemical characterization of a mine water geothermal energy resource in NW Spain. *Science of the Total Environment*, **576**, 59–69, doi:10.1016/j.scitotenv.2016.10.084
- Mason, D.D.A., Dennehy, J.P., Donnelly, L., Parry, D.N. and Chiverrell, C.P. 2019. Surface stability in mined areas. Parry, D.N. and Chiverrell, C.P., Chapter 5 (eds). *Abandoned Mine Workings Manual, CIRIA C758*, 120-161, ISBN 978-0-86017-765-4
- McLean, W.S. 2018. Scottish coal seam names and correlations. *British Geological Survey Open Report*, OR/18/027, 19pp, <http://nora.nerc.ac.uk/id/eprint/520887/>
- Minewater Good Practice Guide. 2013. Mine water as a Renewable Energy Resource: An information guide based on the Minewater Project and the experiences at pilot locations in Midlothian and Heerlen. Retrieved from [http://skrconline.net/content/images/stories/documents/mine\\_water\\_renewable\\_energy\\_guide.pdf](http://skrconline.net/content/images/stories/documents/mine_water_renewable_energy_guide.pdf)
- Mo, S., Ramandi, H.L., Oh, J., Masoumi, H., Canbulat, I., Hebblewhite, B. and Saydam, S. 2020. New coal mine floor rating system and its application to assess the potential of floor heave. *International Journal of Rock Mechanics and Mining Sciences*, **128**, <https://doi.org/10.1016/j.ijrmms.2020.104241>
- Monaghan, A.A., Arkley, S.L.B., Whitbread, K., and McCormac, M. 2014. Clyde superficial deposits and bedrock models released to the ASK Network 2014: a guide for users Version 3. *British Geological Survey Open Report*, OR/14/013, 35pp, <http://nora.nerc.ac.uk/id/eprint/505554/>
- Monaghan, A.A. 2017. Unconventional energy resources in a crowded subsurface: Reducing uncertainty and developing a separation zone concept for resource estimation and deep 3D subsurface planning using legacy mining data. *Science of the Total Environment*, **601-602**, 45-56, <https://doi.org/10.1016/j.scitotenv.2017.05.125>
- Monaghan, A.A., O'Dochartaigh, B., Fordyce, F., Loveless, S., Entwisle, D., Quinn, M., Smith, K., Ellen, R., Arkley, S., Kearsey, T., Campbell, S.D.G., Fellgett, M. and Mosca, I. 2017. UKGEOS: Glasgow Geothermal Energy Research Field Site (GGERFS): initial summary of the geological platform. Nottingham, UK, *British Geological Survey Open Report*, OR/17/006, 205pp, <http://nora.nerc.ac.uk/id/eprint/518636/>
- Monaghan, A.A., Starcher, V., O'Dochartaigh, B., Shorter, K. and Burkin, J. 2019. UK Geoenergy Observatories: Glasgow Geothermal Energy Research Field Site : Science Infrastructure Version 2. *British Geological Survey Open Report*, OR/19/032, 49pp, <http://nora.nerc.ac.uk/id/eprint/522814/>
- Monaghan, A., Starcher, V. and Barron, H. 2020a. UK Geoenergy Observatories Glasgow : express data release, mine water and environmental baseline monitoring boreholes at Cuningar Loop (updated June 2020). Nottingham, UK, *British Geological Survey Open Report*, OR/20/002, 17pp, <http://nora.nerc.ac.uk/id/eprint/526889/>
- Monaghan, A.A., Barron, H.F., Starcher, V., Shorter, K.M. and Walker-Verkuil, K. 2020b. Mine water characterisation and monitoring borehole GGA01, UK Geoenergy Observatory, Glasgow. *British Geological Survey Open Report*, OR/20/021, 28pp. <http://nora.nerc.ac.uk/id/eprint/528075/>

- Monaghan, A.A., Starcher, V., Barron, H.F., Shorter, K.M. and Walker-Verkuil, K. 2020c. Borehole GGA02, UK Geoenergy Observatory, Glasgow. *British Geological Survey Open Report*, OR/20/022, 31pp, <http://nora.nerc.ac.uk/id/eprint/528076/>
- NCB 1975. Subsidence Engineers' handbook. *National Coal Board, London* 110 pp.
- NERC, 2016. Energy Security and Innovation Observing System for the Subsurface (ESIOS) Science Plan, <https://nerc.ukri.org/funding/available/capital/ukgeos/scienceplan/>
- NERC, University of Strathclyde and BGS. 2019. (online, accessed November 2020), Record of proceedings UK Geoenergy Observatories Glasgow Geothermal Energy Innovation Workshop. [https://cms.ukgeos.ac.uk/event/assets/innovation\\_event\\_030619\\_final.pdf](https://cms.ukgeos.ac.uk/event/assets/innovation_event_030619_final.pdf)
- Postnote, 2020. Heat networks. The Parliamentary Office of Science and Technology, London. Number 632. <https://post.parliament.uk/research-briefings/post-pn-0632/>
- Preene, M. and Younger, P.L. 2014. Can you take the heat?—geothermal energy in mining. *Mining Technology*, **123**:107–118, doi:10.1179/1743286314Y.0000000058
- Ó Dochartaigh, B.E., MacDonald, A.M., Fitzsimons, V. and Ward, R. 2015. Scotland's aquifers and groundwater bodies. *British Geological Survey Open Report*, OR/15/028, 63pp, <http://nora.nerc.ac.uk/id/eprint/511413/>
- Ramboll. 2018a. UK Geoenergy Observatories: Glasgow Geothermal Energy Research Field Site Environmental Report. GGERFS planning applications for South Lanarkshire Council. (Edinburgh: Ramboll). <https://publicaccess.southlanarkshire.gov.uk/online-applications/caseDetails.do?caseType=Application&keyVal=P7OTP9OPHQJ00RAMBOLL>.
- Ramboll. 2018b. UK Geoenergy Observatories: Glasgow Geothermal Energy Research Field Site Environmental Report. GGERFS planning applications for Glasgow City Council. (Edinburgh: Ramboll). <https://publicaccess.glasgow.gov.uk/online-applications/applicationDetails.do?keyVal=P70V2DEXFH600&activeTab=summary>
- Ramos, E.P., Breede, K. and Falcone, G. 2015. Geothermal heat recovery from abandoned mines: a systematic review of projects implemented worldwide and a methodology for screening new projects. *Environmental Earth Sciences*, **73**, 6783–6795, doi:10.1007/s12665-015-4285-y
- Rippon, J.H. 1984. Contoured patterns of the throw and hade of normal faults in the Coal Measures (Westphalian) of north-east Derbyshire. *Proceedings of the Yorkshire Geological Society*, **45**, 147-161, doi:10.1144/pygs.45.3.147
- Scottish Government 2020. Update to the Climate Change Plan 2018 – 2032. Securing a Green Recovery on a Path to Net Zero. <https://www.gov.scot/publications/securing-green-recovery-path-net-zero-update-climate-change-plan-20182032/>
- Shorter, K.M., Starcher, V., Barron, H.F., Walker-Verkuil, K. and Monaghan, A.A. 2020a. Environmental baseline characterisation and monitoring borehole GGA03r, UK Geoenergy Observatory, Glasgow. *British Geological Survey Open Report*, OR/20/023, 23pp, <http://nora.nerc.ac.uk/id/eprint/528077/>
- Shorter, K.M., Starcher, V., Barron, H.F., Walker-Verkuil, K. and Monaghan, A.A. 2020b. Environmental baseline characterisation and monitoring borehole GGA06r, UK Geoenergy Observatory, Glasgow., *British Geological Survey Open Report*, OR/20/026, 23pp, <http://nora.nerc.ac.uk/id/eprint/528079/>
- Shorter, K., Ó Dochartaigh, B.E., Butcher, A., MacDonald, A., Elsome, K. and Burke, S. 2021 in press. Data release and initial interpretation of test pumping of boreholes at the Glasgow UK Geoenergy Observatory. *British Geological Survey Open Report*, OR/21/016.
- Starcher, V., Barron, H.F., Monaghan, A.A., Shorter, K.M. and Walker-Verkuil, K. 2020a. Mine water characterisation and monitoring borehole GGA04, UK Geoenergy Observatory, Glasgow. *British Geological Survey Open Report*, OR/20/024, 28pp, <http://nora.nerc.ac.uk/id/eprint/528078/>
- Starcher, V., Walker-Verkuil, K., Shorter, K.M., Monaghan, A.A. and Barron, H.F. 2020b. Mine water characterisation and monitoring borehole GGA07, UK Geoenergy Observatory, Glasgow. *British Geological Survey Open Report*, OR/20/027, 29pp. <http://nora.nerc.ac.uk/id/eprint/528080/>

- Starcher, V., Monaghan, A.A., Barron, H.F., Shorter, K., Walker-Verkuil, K., Elsome, J.. 2021 in press. Workflow and lessons learnt from creating a mine water heat subsurface observatory in Glasgow, UK. *British Geological Survey Open Report*, OR/21/020
- Stephenson, M.H., Ringrose, P., Geiger, S., Bridden, M. and Schofield, D. 2019. Geoscience and decarbonization: current status and future directions. *Petroleum Geoscience*, 25, 501-508, <https://doi.org/10.1144/petgeo2019-084>
- Todd, F., McDermott, C., Fraser Harris, A., Bond, A. and Gilfillan, S. 2019. Coupled hydraulic and mechanical model of surface uplift due to mine water rebound: implications for mine water heating and cooling schemes. *Scottish Journal of Geology*, 55, 124-133, <https://doi.org/10.1144/sjg2018-028>
- Townsend, D.H., Naismith, J.D.A., Townsend, P.J., Milner, M.G. and Fraser, U.T. 2021. On the Rocks – Exploring Business Models for Geothermal Heat in the Land of Scotch. World Geothermal Congress 2020/2021, Reykjavik. <https://pangea.stanford.edu/ERE/db/WGC/Abstract.php?PaperID=6172>
- Verhoeven, R., Willems, E., Harcouët-Menou, V., De Boever, E., Hiddes, L., Op'T Veld, P. and Demollin, E. 2014. Minewater 2.0 project in Heerlen the Netherlands: transformation of a geothermal mine water pilot project into a full scale hybrid sustainable energy infrastructure for heating and cooling. *Energy Procedia*, 46, 58-67, <https://doi.org/10.1016/j.egypro.2014.01.158>
- Walker-Verkuil, K., Starcher, V., Barron, H.F., Shorter, K.M. and Monaghan, A.A. 2020a. Environmental baseline characterisation and monitoring borehole GGA09r, UK Geoenergy Observatory, Glasgow. *British Geological Survey Open Report*, OR/20/029, 22pp, <http://nora.nerc.ac.uk/id/eprint/528082/>
- Walker-Verkuil, K., Starcher, V., Barron, H.F., Shorter, K.M., Elsome, J., Monaghan, A.A. 2020b. Environmental baseline characterisation and monitoring borehole GGB05, UK Geoenergy Observatory, Glasgow. *British Geological Survey Open Report*, OR/20/031, 23pp, <http://nora.nerc.ac.uk/id/eprint/528084/>
- Walsh, J.J. and Watterson, J. 1988. Dips of normal faults in British Coal Measures and other sedimentary sequences. *Journal of the Geological Society*, London, 145, 859-873.
- Watson S.D., Lomas K.J. and Buswell R.A. 2019. Decarbonising domestic heating: What is the peak GB demand? *Energy Policy*, 126, 533-544. <https://doi.org/10.1016/j.enpol.2018.11.001>.
- Watson, S.M. and Westaway, R. 2020. Borehole temperature log from the Glasgow Geothermal Energy Research Field Site: A record of past changes to ground surface temperature caused by urban development. *Scottish Journal of Geology*, 56:2, 134, doi:10.1144/sjg2019-033
- Watzlaf, G.R. and Ackman, T.E. 2006. Underground mine water for heating and cooling using geothermal heat pump systems. *Mine Water Environ*, 25, 1–14, doi:10.1007/s10230-006-0103-9
- Wuest, W.J. 1992. Controlling coal mine floor heave: An overview. U.S. Bureau of Mines Information Circular 9326, 17pp.
- Younger, P.L., and Adams, R. 1999. Predicting mine water rebound. *Environment Agency R&D Technical Report W179*. Bristol, UK. 108pp. [https://assets.publishing.service.gov.uk/government/uploads/system/uploads/attachment\\_data/file/290258/str-w179-e-e.pdf](https://assets.publishing.service.gov.uk/government/uploads/system/uploads/attachment_data/file/290258/str-w179-e-e.pdf)
- Younger, P.L. and Robins, N.S. 2002. Challenges in the characterisation and prediction of the hydrogeology and geochemistry of mined ground. In: (eds) Younger, P.L. and Robins, N.S. Mine Water Hydrogeology and Geochemistry. *Geological Society of London Special Publication*, 198, 1–16.
- Younger, P.L. 2014. Hydrogeological challenges in a low-carbon economy. *Quarterly Journal of Engineering Geology and Hydrogeology*, 47, 7–27, <http://dx.doi.org/10.1144/qjagh2013-063>

# Acknowledgements

Many additional former and current BGS colleagues have contributed to the delivery of the UK Geoenery Observatory in Glasgow and associated open datasets including Geoff Baxter, Rachel Dearden, Joel Burkin, Cristina Chapman, Claire Buchanan, Tom Galley, John Midgley, Bill McLean, Brigid O Dochartaigh, Fiona Fordyce, Carl Watson, Paulius Tvaranavicius, Helen Taylor-Curran, Bob Lister, Oliver Kuras, Phil Meldrum, Sean Burke, Corinna Abesser. Special thanks go to the UK Geoenery Observatories Science Advisory Group (GSAG) for advice to maximise science opportunities, contractors BAM Nuttall/ BAM Ritchies (drilling and construction), Ramboll (planning and environmental), Drilcorp (drilling and test pumping) and to Clyde Gateway, SEPA and The Coal Authority. Mike Spence, Gareth Farr and 2 anonymous reviewers are thanked for reviews of this paper.

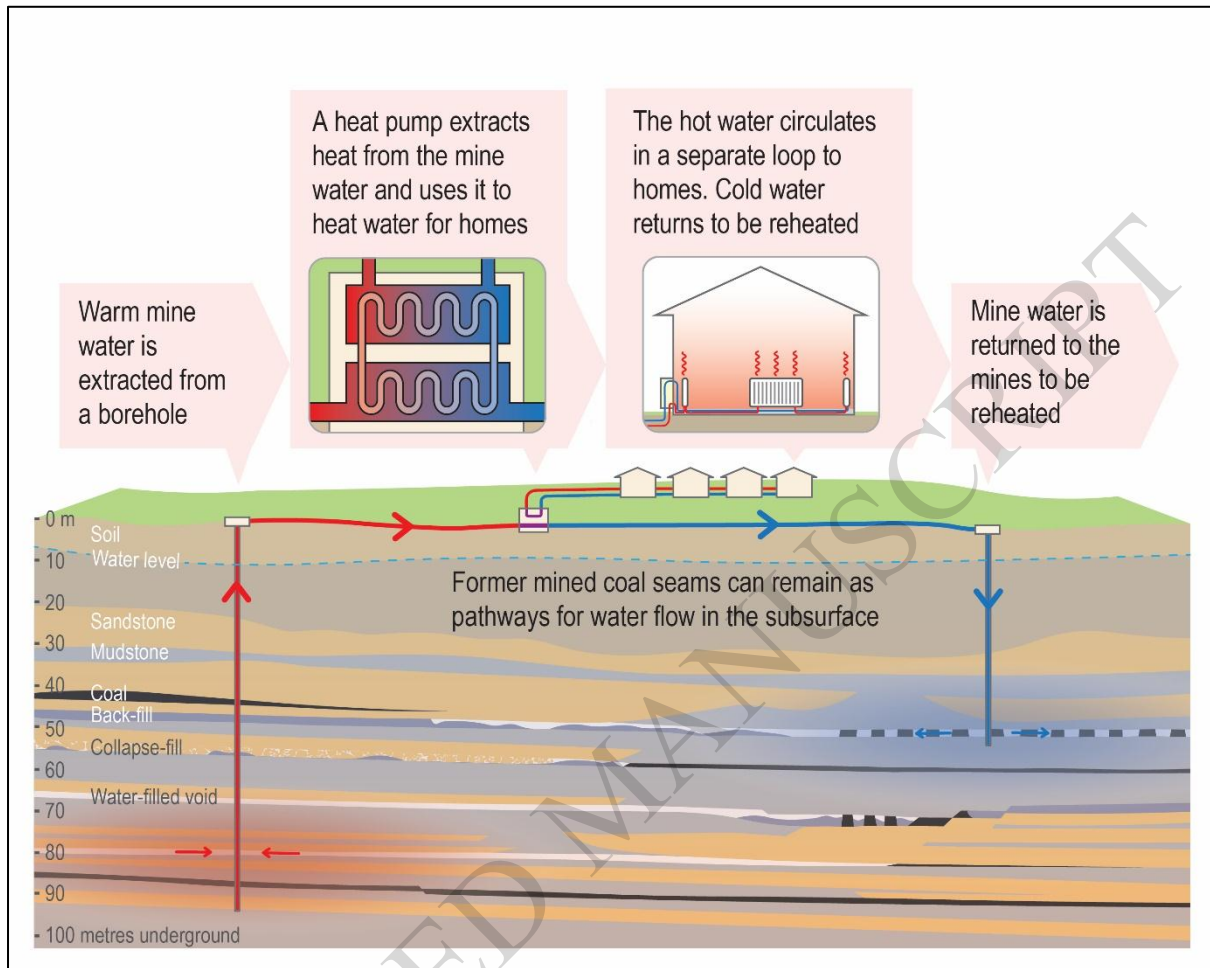
This paper is published with the permission of the Executive Director, British Geological Survey (UKRI).

## Funding

The Glasgow Observatory was delivered and is operated by the British Geological Survey (BGS) on behalf of the Natural Environment Research Council (NERC/UKRI). Capital funding for the construction of the Observatory was from UK Government Department for Business, Energy and Industrial Strategy through NERC/UKRI. All authors are employed by BGS.

**Supplementary material** Borehole reports and other datasets are available at <https://ukgeos.ac.uk/data-downloads> (mixture of over 20 DOI datasets and reports/data packs published openly on <https://nora.nerc.ac.uk> , all material is deposited in the National Geoscience Data Centre)

## Figures



**Figure 1 Simplified overview of abandoned, flooded coal mines in the subsurface utilised for shallow, low enthalpy mine water heat via abstraction and re-injection of groundwater, to heat homes and businesses ©BGS, UKRI 2021**

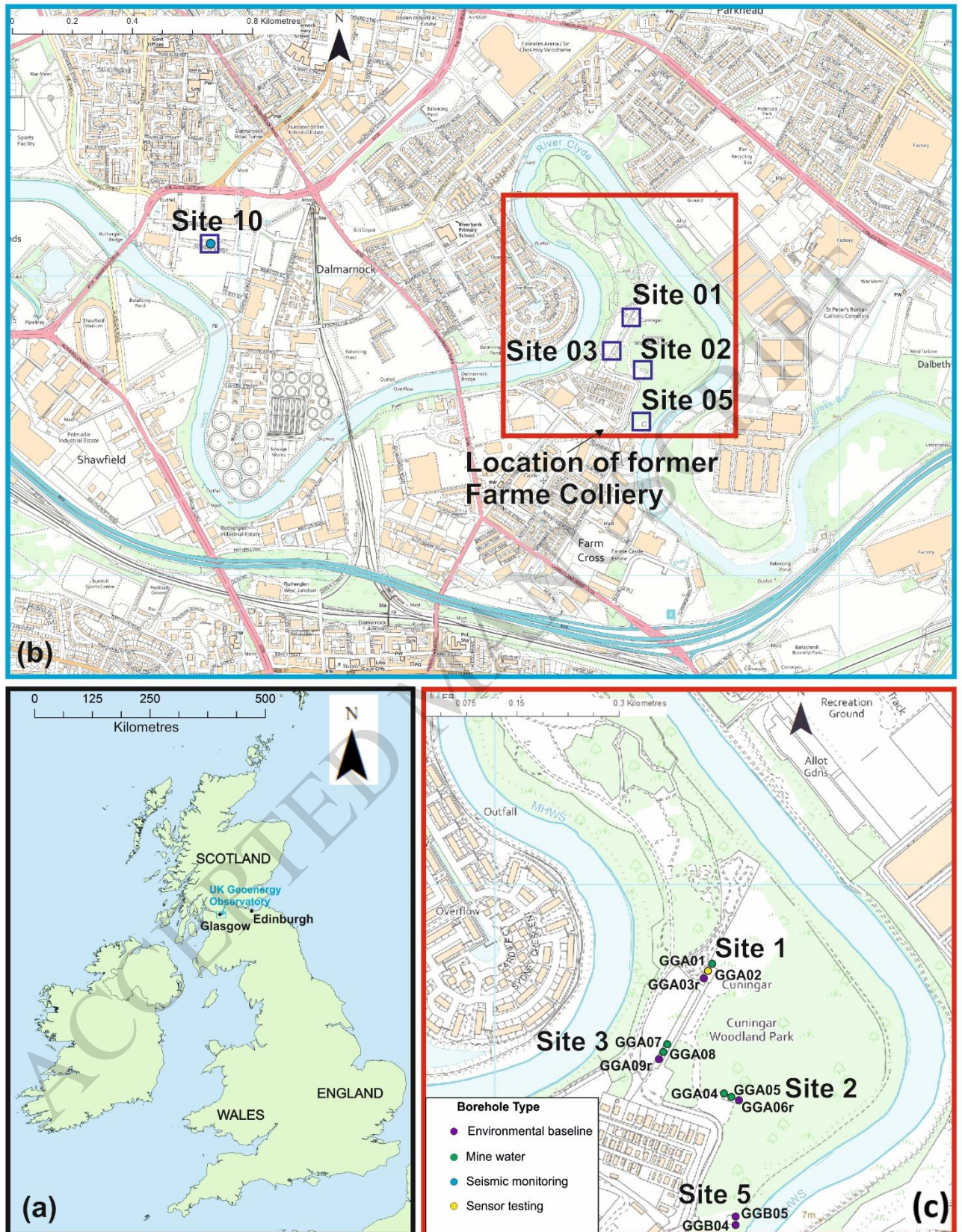
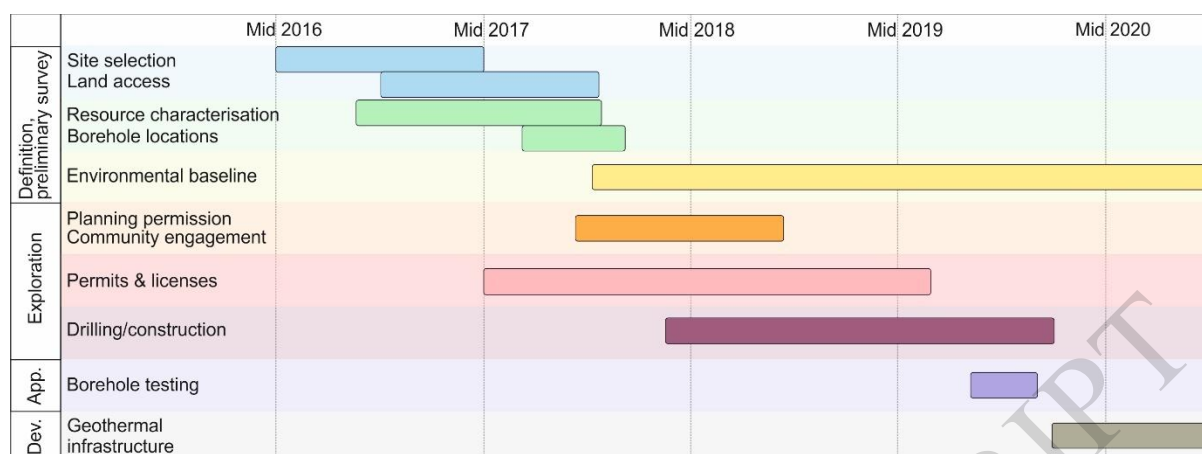


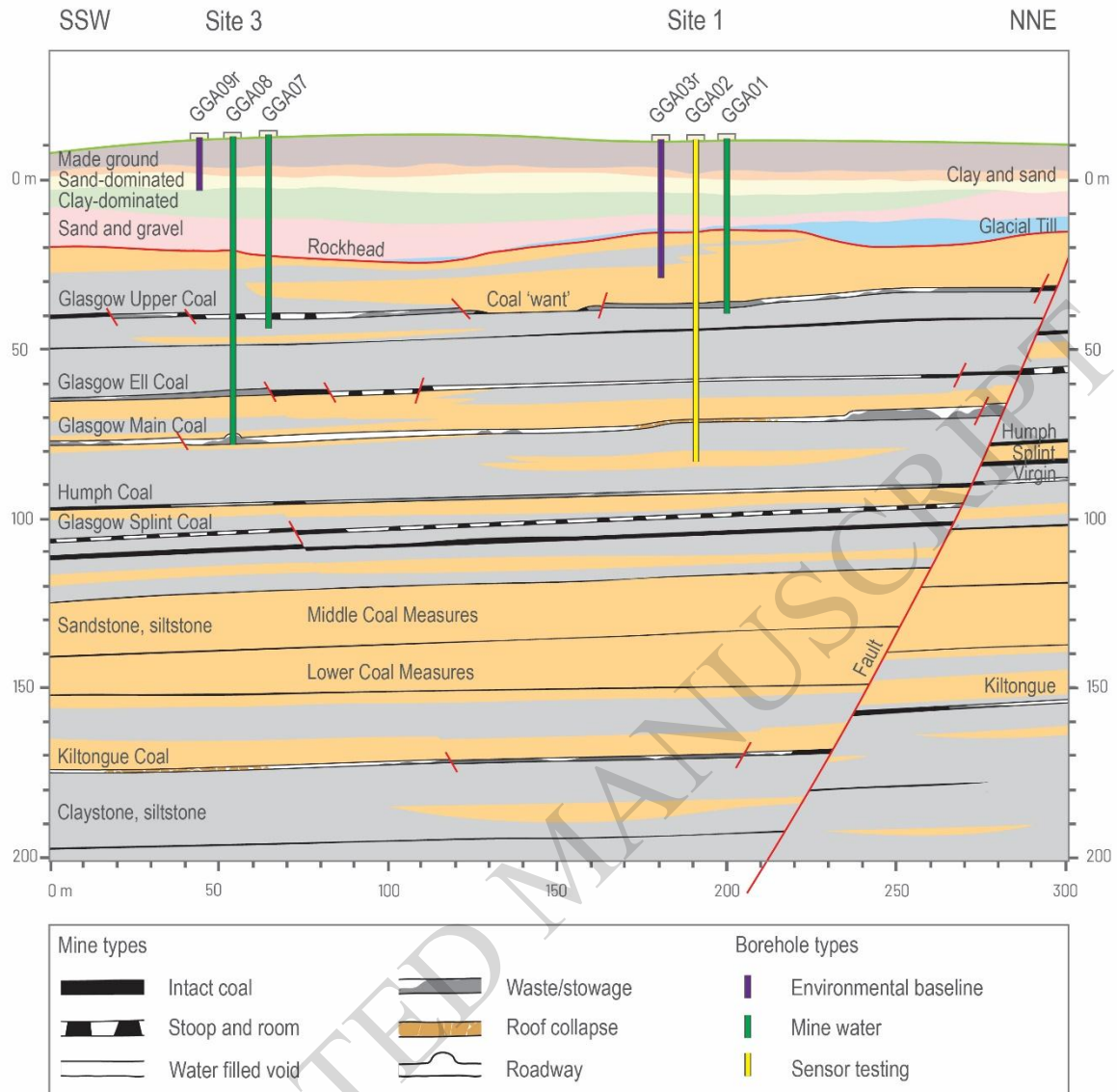
Figure 2 (a) Location of the Glasgow Observatory in the UK (b) position of Observatory sites (c) detail of Cuningar Loop mine water and environmental baseline characterisation and monitoring boreholes. Ordnance Survey data ©Crown Copyright and database rights 2021. Ordnance Survey Licence No. 100021290 EUL.



**Figure 3** Simplified timeline of the definition/preliminary survey, exploration, appraisal (App.) and start of development (Dev.) stages of the mine water heat research infrastructure of the Glasgow Observatory.

ACCEPTED MANUSCRIPT

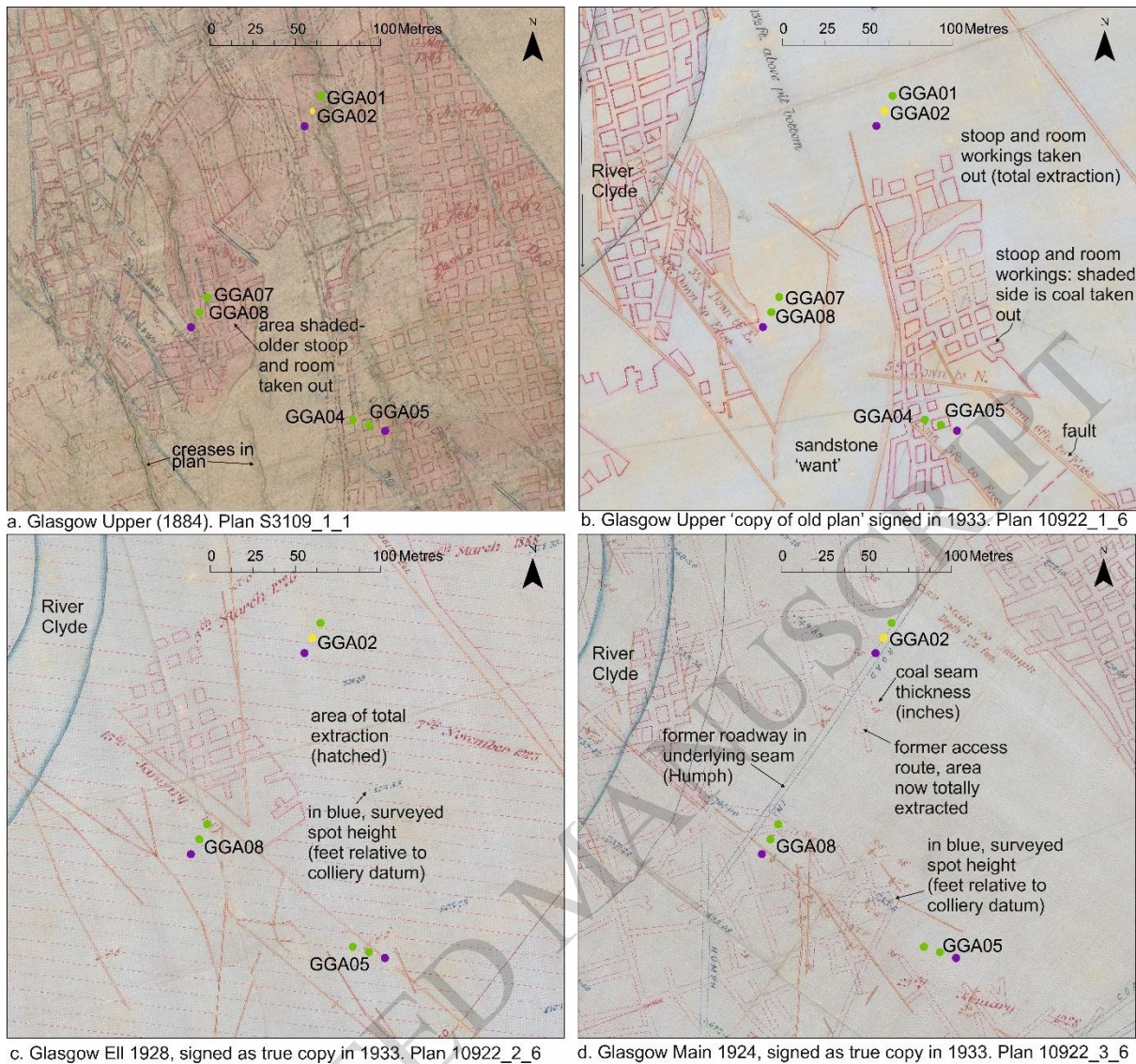




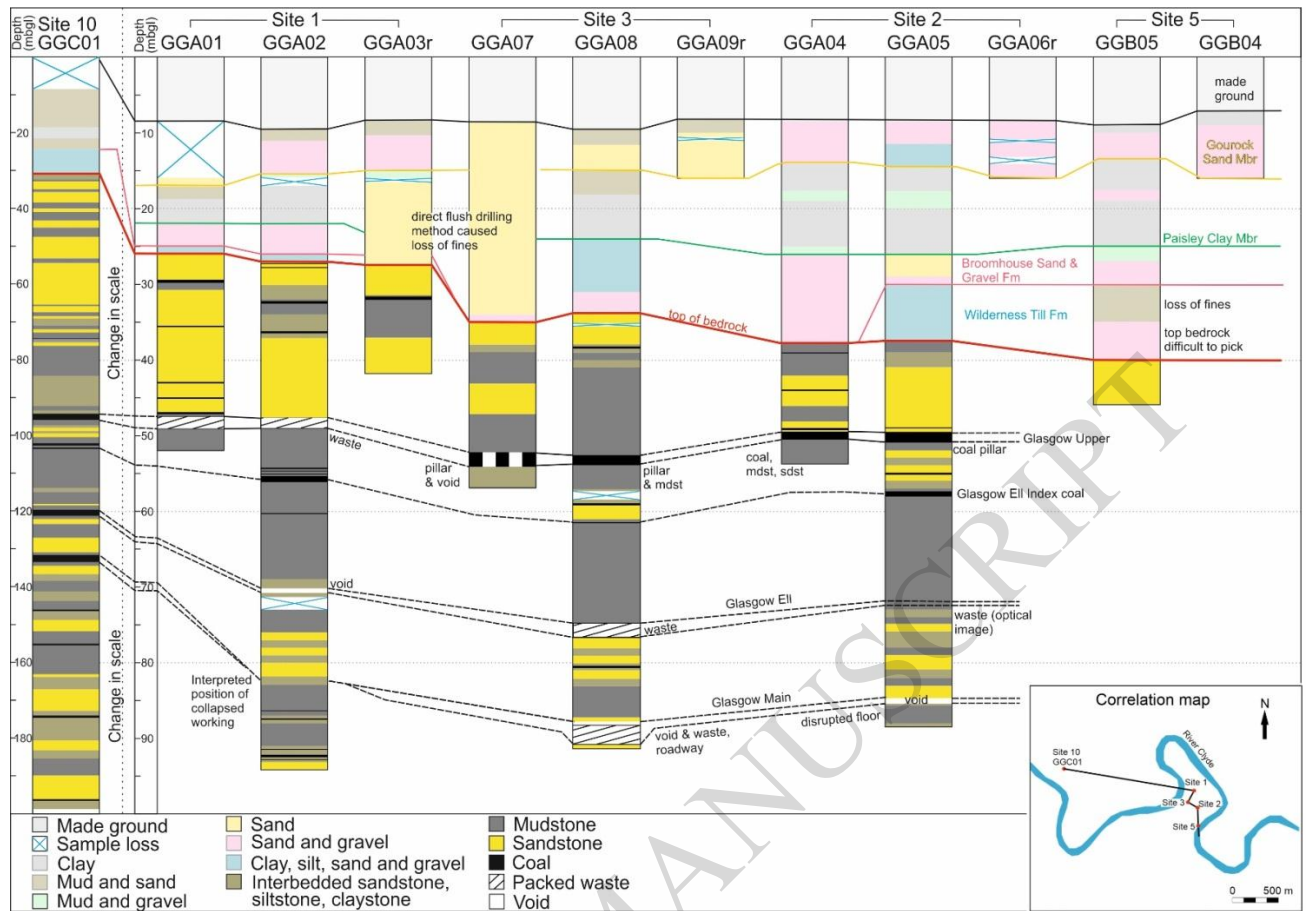
**Figure 4** Cross-section through sites 1 and 3 of the Glasgow Observatory interpreted from new and legacy borehole data, mine abandonment plan records and using 3D geological models.  
©BGS,UKRI 2021



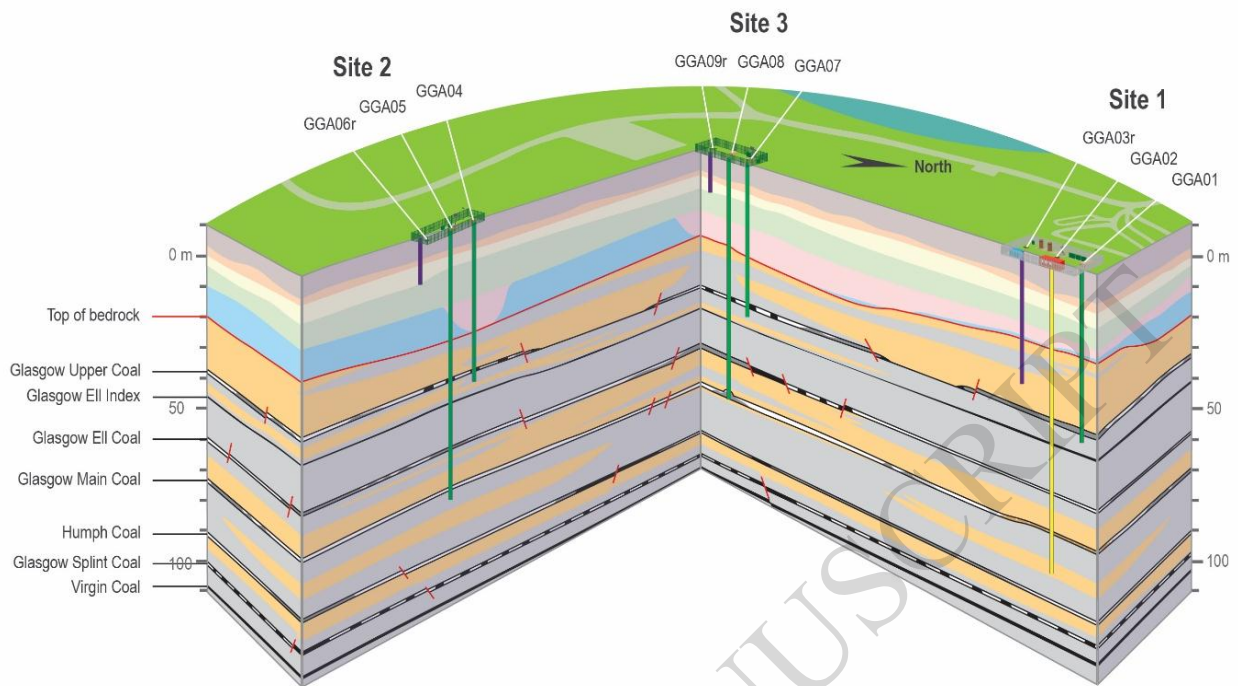
Figure 5 Images of (a) Drilling of the cored borehole GGC01 in 2018 (b) Installation of uPVC casing screen to mine water borehole with pre-glued gravel pack, electrical resistivity sensor cable (red sensors) and fibre optic cable. Photos a,b BGS©UKRI 2020 (c) research compound Site 1 at July 2020, background photo courtesy BAM Nuttall .



**Figure 6. Labelled images of georeferenced scans of Farme Colliery mine abandonment plans in the vicinity of the Glasgow Observatory boreholes. Boreholes penetrating the coal seam/mine working are labelled. Plan scans © The Coal Authority 2021. All rights reserved. Borehole locations and labels by the authors. Borehole colours as in Figure 2c.**



**Figure 7 Lithostratigraphical correlation panel of the Glasgow Observatory boreholes. Cuningar Loop boreholes summarised and interpreted from open hole rock chips. GGC01 sedimentology core log at a different scale. ©BGS, UKRI 2021**



**Figure 8 Interpretive 3D block diagram to illustrate borehole geometry, proved and interpreted mine working variability indicated by abandonment plans. No vertical exaggeration. ©BGS, UKRI 2021**

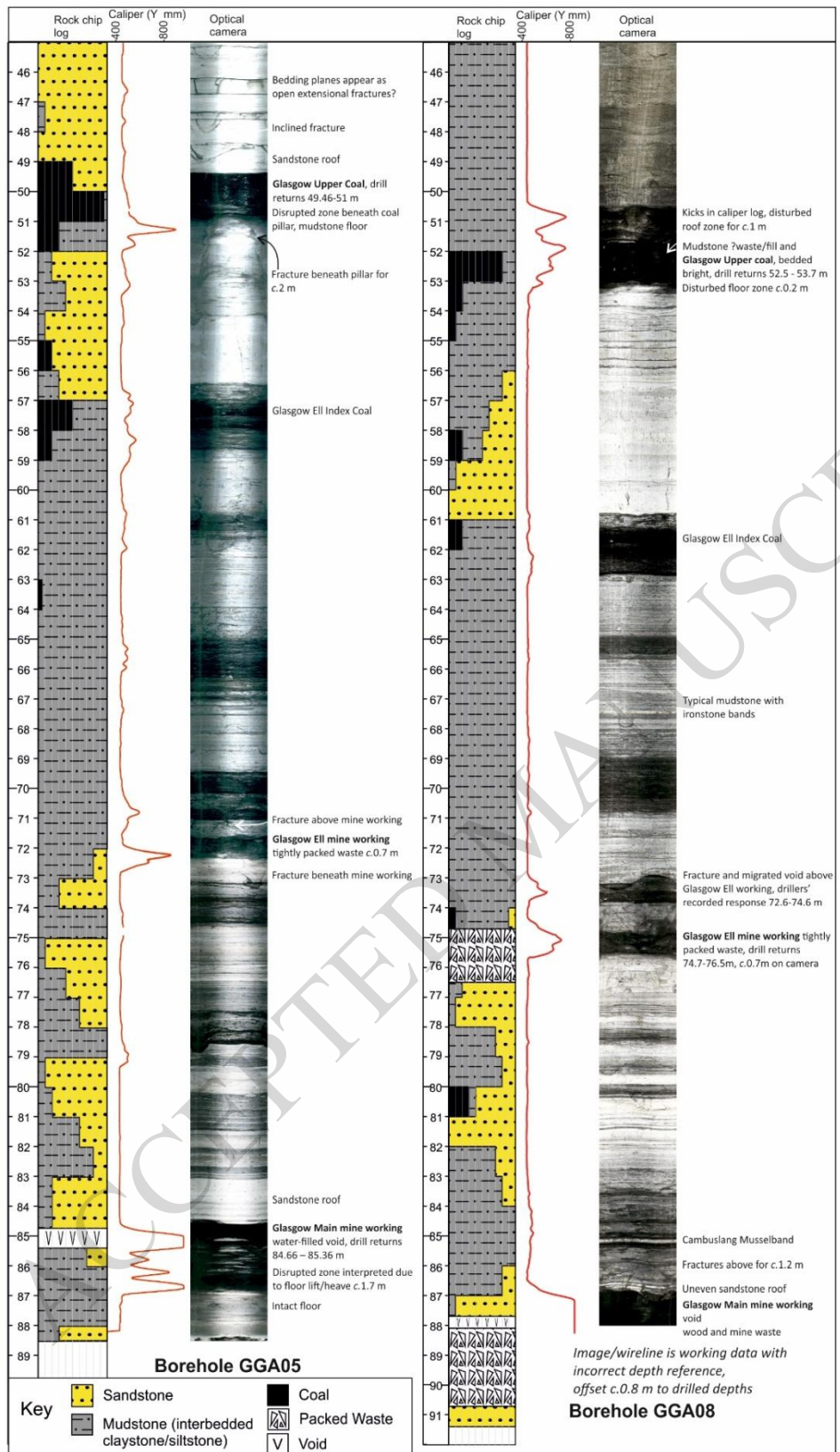
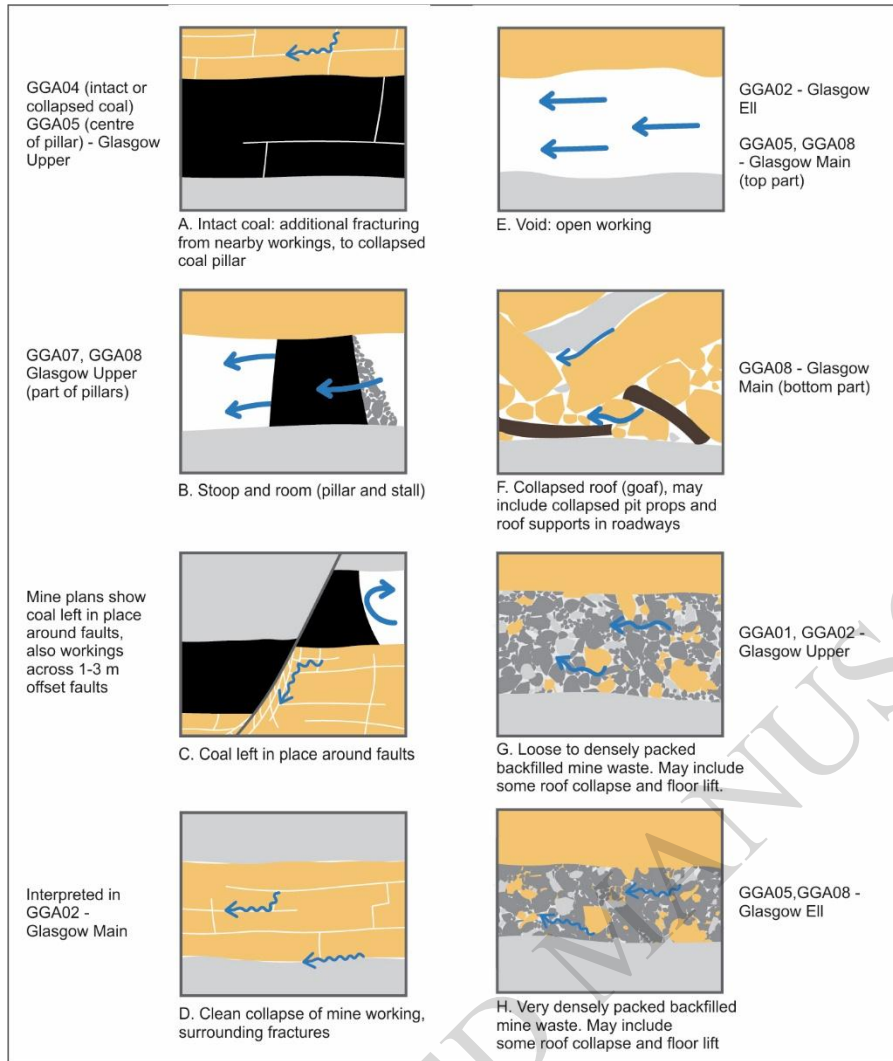


Figure 9 Rock chip log, caliper log and camera optical log images from the Glasgow Upper to Glasgow Main coal seam/mine workings section of boreholes GGA05 and GGA08. ©BGS, UKRI 2021



**Figure 10 a-h Mine water reservoir classifications observed at the Glasgow Observatory with indications of their influence on hydraulic properties. ©BGS, UKRI 2021**

Site	Borehole number	Borehole type	Drilling method: superficial and bedrock sections	Total drilled depth from drill platform level (m)	Drilled diameter at total depth	Total casing depth from as-built datum (m)	Screen depth from as-built datum (m)	Screen type and internal casing diameter	Description of screened interval	ERT, fibre optics installed
1	GGA01	Mine water	Superficial and bedrock: rotary, reverse circulation	52.00	406 mm (16")	51.11	44.81 - 48.41	4 mm slotted with pre-glued gravel pack, 248 mm ID	Overlying <b>sandstone</b> roof and <b>Glasgow Upper mine working waste</b>	Y
1	GGA02	Sensor testing	Superficial and bedrock: rotary, reverse circulation	94.16	406 mm (16")	92.57	n/a	248 mm ID	n/a. Grout filled Glasgow Main target interval/screen inside casing up to 67.2 m	Y
1	GGA03r	Environmental monitoring	Superficial: rotary, direct circulation Bedrock: rotary, reverse circulation	41.72	374 mm (14 ¾")	40.81	37.00 - 39.81	3 mm slotted with pre-glued gravel pack, 146 mm ID	<b>Sandstone</b> bedrock, above Glasgow Upper mine working	N
2	GGA04	Mine water	Superficial and bedrock: rotary, reverse circulation	53.63	406 mm (16")	53.00	47.40 - 51.00	4 mm slotted with pre-glued gravel pack, 248 mm ID	Overlying <b>sandstone</b> roof (fractured?) and <b>Glasgow Upper mine working position, coal and mudstone</b>	Y
2	GGA05	Mine water	Superficial: rotary, reverse and direct circulation Bedrock: rotary, reverse circulation	88.50	406 mm (16")	88.00	83.60 - 86.30	4 mm slotted no gravel pack, 248 mm ID	Overlying <b>sandstone</b> roof and <b>Glasgow Main mine working, void</b> to mudstone floor	Y
2	GGA06r	Environmental monitoring	Superficial: rotary, direct circulation	16.00	191 mm (7 ½")	13.76	11.79 - 13.76	1 mm slotted with pre-glued gravel pack, 103.8 mm ID	<b>Sand and gravel</b> in superficial deposits	N
3	GGA07	Mine water	Superficial: duplex drilling, direct circulation. Bedrock: rotary, reverse circulation	56.90	406 mm (16")	56.61	50.91 - 53.61	4 mm slotted pre-glued gravel pack, 248 mm ID	Overlying <b>mudstone</b> roof and <b>Glasgow Upper mine working, coal pillar and void</b>	Y
3	GGA08	Mine water	Superficial: rotary with reverse and direct circulation, and duplex drilling Bedrock: rotary, reverse circulation	91.37	406 mm (16")	87.95	85.08 - 87.70	4 mm slotted pre-glued gravel pack, 248 mm ID	Overlying <b>sandstone/siltstone</b> and <b>Glasgow Main mine roadway void</b>	Y



3	GGA09r	Environmental monitoring	Superficial: rotary, direct circulation	16.00	191 mm (7 ½")	14.33	11.43 - 13.33	1 mm slotted with pre-glued gravel pack, 103.8 mm ID	<b>Sand</b> in superficial deposits	N
5	GGB04	Environmental monitoring	Superficial: rotary, direct circulation	16.00	191 mm (7 ½")	12.99	10.09 - 11.99	1 mm slotted with pre-glued gravel pack, 103.8 mm ID	<b>Sand and gravel</b> in superficial deposits	N
5	GGB05	Environmental monitoring	Superficial: rotary with reverse and direct circulation, and duplex drilling. Bedrock: rotary, reverse circulation	46.00	374 mm (14 ¾")	45.39	42.39 - 44.19	3 mm slotted with pre-glued gravel pack, 146 mm ID	<b>Sandstone</b> bedrock, above Glasgow Upper mine working	N
10	GGC01	Seismic monitoring	Geobore S coring	199.00	151 mm	198.30	n/a	76.6 mm ID	n/a	N

**Table 1 Summary of Glasgow Observatory boreholes. Grid references, drilled and datum heights are given in open data from ukgeos.ac.uk. n/a=not applicable, Y=yes, N= no. ©BGS, UKRI 2021**

<b>Feature</b>	<b>Caused by:</b>	<b>Recognised during Glasgow Observatory borehole drilling</b>
Clean drop of core barrel	Open mine working, void	GGA02 – Glasgow Ell GGA05 – Glasgow Main
Increased rate of penetration, increased cuttings returns	Easier progress through mine 'waste' (stowage/backfill, collapsed/fractured rock)	GGA01 – Glasgow Upper GGA02 – Glasgow Upper GGA08 – Glasgow Upper GGA08 – Glasgow Ell
Wobbling or 'torquing-up' of drill bit	Sometimes indicates fractured rock mass	GGA05 above Glasgow Main
Smell of H <sub>2</sub> S (rotten eggs) and/or gas monitor alarm	Mine gas/mine water	Smell (alarm not activated): GGA01 – Glasgow Upper GGA02 – Glasgow Ell GGA05 – Glasgow Ell (faint) GGA05 – Glasgow Main GGA08 – Glasgow Upper GGA08 – Glasgow Main
Loss of fluid flush	If using direct circulation, fluid flush would be lost into the mine working	Reverse circulation was used to avoid loss of flush
Returns of iron and sulphur stained coal, mudstone, siltstone, sandstone (mixed lithologies)	Returns of mine waste, may be loose to densely packed. Mixed, stained lithologies interpreted as stowage.	GGA01 – Glasgow Upper GGA02 – Glasgow Upper GGA08 – Glasgow Ell GGA08 – Glasgow Main
Returns of wood, metal, rubber	Roof support, pit prop, roadway, trackway and similar (first confirm nothing has been dropped down the borehole)	GGA02 – Glasgow Upper GGA08 – Glasgow Main
Returns of stained, altered coal	Edge of coal pillar or collapsed, fractured pillar	GGA07 – Glasgow Upper GGA08 – Glasgow Upper
Excess water at shakers	Fractured rock above mine working	GGA08 – above Glasgow Upper
Substantial kick(s) in caliper log	Void, waste or fractured rock	GGA04 – above Glasgow Upper GGA05 – all 3 workings GGA07 – Glasgow Upper GGA08 – all 3 workings
Voids, wastes, fractures, disturbed strata visible on optical camera		GGA05 – all 3 workings GGA07 – Glasgow Upper GGA08 – all 3 workings

**Table 2 Features used to recognise mine workings during open hole rotary drilling of the Glasgow Observatory boreholes at Cuningar Loop in 2019. ©BGS, UKRI 2021**

Borehole – coal (in order of drilling)	Prognosed drill depth. Glasgow Upper and Main target workings with error margin (m)	Observed drilled depths of mine working (top-base) from drill platform (m)	Prognosed mine working type from mine plans	Observed mine working type	Observed mining-related collapse and fracture features above/below working
GGA02- GU	45±4	47.80 – 48.95	Area of total extraction following earlier irregular-shaped worked areas and roadways	Loose to moderately packed waste	No data
GGA02 - GE	77	70.16 – 70.76	Total extraction	Open void	No data
GGA02- GMA	83 ±2	Not recognised	Total extraction	Not recognised - interpreted as cleanly collapsed working	No data
GGA01- GU	45±4	47.60 – 48.86	Area of total extraction following earlier irregular-shaped worked areas and roadways	Loosely packed waste – mixed lithologies	No data
GGA05 – GU <sup>+</sup>	51 ±2	49.46 – 51.00	Stoop and room (coal stoop/pillar)	Coal pillar	Horizontal bedding planes for c.6 m above appear as open fractures. c.0.2 m disruption below pillar in claystone floor – caliper kick. Minor loss during annulus grouting. Fracture for c.2 m beneath Floor lift/heave or pillar punching?
GGA05 – GE <sup>+</sup>	72*	71.90 – 72.6	Total extraction	Tightly packed waste c.0.7m, not recognised during drilling, seen on optical camera and caliper log	Fractures 1-2 m above and below the mine working from optical camera
GGA05-GMA <sup>+</sup>	86 ±2	84.66 – 85.36	Total extraction	Open, water-filled void. Underlying floor lift zone.	Disrupted floor zone on optical camera and caliper data. Siltstone-fine sandstone rock chip returns (not waste), interpreted as 1.7 m of floor lift
GGA04 - GU	51 ±2	49.46 – 50.60	Stoop and room (room/void)	Fractured roof and coal – edge or collapsed pillar?	Caliper log/rock chip returns indicate c. 1.5 m fractured sandstone in roof of coal. Also caliper kick in mudstone below coal.
GGA08 - GU <sup>+</sup>	51 ±2	52.50 – 53.70	Total extraction	Intact coal and waste – hit edge of a pillar	Optical camera and caliper show disrupted mudstone roof c.1 m above. Disrupted floor c. 0.2 m below
GGA08 – GE <sup>+</sup>	Between 72 – 81*	74.70 – 76.50	Total extraction	Densely packed waste	Optical camera and caliper show fracture and migrated void 2 m above mine working. Intact rock below.
GGA08 - GMA <sup>+</sup>	88 ±2	87.70 – 90.70	Total extraction and	Open void to collapsed material, wood,	Fractures for around 1.2 m above roof of mine working on

			former roadway	waste – the thickness indicates a mine roadway	optical camera
GGA07 - GU <sup>+</sup>	51 ±2	52.2 – 53.9	Total extraction	Coal pillar and void on optical camera and caliper kick	Fracturing not discernible in mudstone roof

**Table 3 Prognosed and observed depth and lithology/type of the mine water boreholes, listed in order of drilling\*adjusted from published pre-drill prognoses during the drilling phase based on the depth of GGA02. <sup>+</sup> Signifies that optical camera data is available and constrains the interpretation. GGA04 interpretation includes open hole caliper data but not optical camera data. GU= Glasgow Upper, GE= Glasgow Ell, GMA=Glasgow Main. ©BGS, UKRI 2021**

ACCEPTED MANUSCRIPT