

Spring 2016

Information Literacy [brochure and streaming video]

Brena Zu Andring

Western Kentucky University, brena.andring@wku.edu

Madelyn Frost

Western Kentucky University, madelyn.frost330@topper.wku.edu

Follow this and additional works at: http://digitalcommons.wku.edu/cns_apps



Part of the [Student Counseling and Personnel Services Commons](#)

Recommended Citation

Andring, Brena Zu and Frost, Madelyn, "Information Literacy [brochure and streaming video]" (2016). *Counseling Concepts and Applications for Student Affairs Professionals (CNS 577)*. Paper 46.
http://digitalcommons.wku.edu/cns_apps/46

This Other is brought to you for free and open access by TopSCHOLAR®. It has been accepted for inclusion in Counseling Concepts and Applications for Student Affairs Professionals (CNS 577) by an authorized administrator of TopSCHOLAR®. For more information, please contact todd.seguin@wku.edu.

CONDUCTING RESEARCH USING LIBRARY RESOURCES

BRENA ANDRING & MADELYN FROST

EVALUATE THE EXTENT OF INFORMATION NEEDED

Basic Scholarly Information Sources

Books

Scholarly Journal Articles

Reference Sources

Scholarly Websites-- .org, .edu, .gov

ACCESS THE NEEDED INFORMATION EFFECTIVELY AND EFFICIENTLY

Use databases such as EBSCO or JSTOR

Ask a reference librarian for help

Make sure to keep track of what sources you find

EVALUATE INFORMATION AND ITS SOURCES CRITICALLY

Is the information from a credible source rather than from Wikipedia or Google?

Who is the author or authors?

Is it peer reviewed?

INCORPORATE SELECTED INFORMATION INTO ONE'S KNOWLEDGE BASE

Decide which info is important and relevant to your research

USE INFORMATION EFFECTIVELY TO ACCOMPLISH A SPECIFIC PURPOSE

Use the information in your research, paper or other assignment

UNDERSTAND THE ECONOMIC, LEGAL, AND SOCIAL ISSUES SURROUND THE USE OF INFORMATION AND ACCESS AND USE INFORMATION ETHICALLY AND LEGALLY

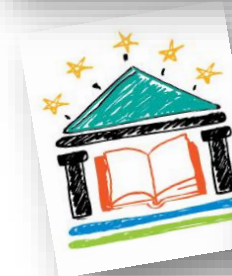
Use one of the three citation styles, MLA, APA and Chicago, to avoid plagiarism and the consequences of plagiarism



70% of college students **do not ask** their campus **librarians for help** with course assignments



75% of college students say they wish they **took more advantage of the library and its resources**



61% of college instructors who are **"not confident"** in their students' research skills

"IT IS LITTLE MORE DIFFICULT TO USE THE DATABASE FROM THE LIBRARY, BUT IT PROVIDES YOU BETTER INFORMATION. SO, IF YOU KNOW HOW TO USE IT, IT'S A LOT BETTER TO USE, JUST BECAUSE IT PROVIDES CREDIBLE SOURCES. IN GOOGLE YOU HAVE TO SIFT THROUGH EVERY WEBSITE TO SEE IF THAT'S WHAT YOU WANT OR NOT, AND THE SCHOOL'S DATABASES NARROW IT DOWN TO WHERE YOU CAN USE OPTIONS TO NARROW DOWN YOUR SEARCH A LOT BETTER THAN GOOGLE."