

Technical University of Denmark



Foot-and-Mouth Disease Virus Serotype SAT 3 in Long-Horned Ankole Calf, Uganda

Dhikusooka, Moses Tefula; Tjørnehøj, Kirsten; Ayebazibwe, Chrisostom; Namatovu, Alice; Ruhweza, Simon; Redlef Siegismund, Hans; Wekesa, Sabenzia Nabalayo; Normann, Preben; Belsham, Graham

Published in:

Emerging Infectious Diseases (Print Edition)

Link to article, DOI:

[10.3201/eid2101.140995](https://doi.org/10.3201/eid2101.140995)

Publication date:

2015

Document Version

Publisher's PDF, also known as Version of record

[Link back to DTU Orbit](#)

Citation (APA):

Dhikusooka, M. T., Tjørnehøj, K., Ayebazibwe, C., Namatovu, A., Ruhweza, S., Redlef Siegismund, H., ... Belsham, G. (2015). Foot-and-Mouth Disease Virus Serotype SAT 3 in Long-Horned Ankole Calf, Uganda. *Emerging Infectious Diseases (Print Edition)*, 21(1), 111-114. DOI: 10.3201/eid2101.140995

DTU Library

Technical Information Center of Denmark

General rights

Copyright and moral rights for the publications made accessible in the public portal are retained by the authors and/or other copyright owners and it is a condition of accessing publications that users recognise and abide by the legal requirements associated with these rights.

- Users may download and print one copy of any publication from the public portal for the purpose of private study or research.
- You may not further distribute the material or use it for any profit-making activity or commercial gain
- You may freely distribute the URL identifying the publication in the public portal

If you believe that this document breaches copyright please contact us providing details, and we will remove access to the work immediately and investigate your claim.

Foot-and-Mouth Disease Virus Serotype SAT 3 in Long-Horned Ankole Calf, Uganda

Moses Tefula Dhikusooka, Kirsten Tjørnehøj, Chrisostom Ayebazibwe, Alice Namatovu, Simon Ruhweza, Hans Redlef Siegismund, Sabenzia Nabalayo Wekesa, Preben Normann, and Graham J. Belsham

After a 16-year interval, foot-and-mouth disease virus serotype SAT 3 was isolated in 2013 from an apparently healthy long-horned Ankole calf that grazed close to buffalo in Uganda. The emergent virus strain is $\approx 20\%$ different in nucleotide sequence (encoding VP1 [viral protein 1]) from its closest relatives isolated previously from buffalo in Uganda.

Foot-and-mouth disease (FMD) remains one of the most economically important diseases of livestock, costing \approx US \$10 billion annually (1). Outbreaks occur in many countries, and normally disease-free countries can incur huge costs after incursions (e.g., the United Kingdom in 2001). The disease results from infection with FMD virus (FMDV, the prototypic aphthovirus within the *Picornaviridae* family) (2). Seven serotypes of FMDV are known; serotypes O and A are widely distributed, and the Southern African Territories (SAT) serotypes (1, 2, and 3) usually are restricted to Africa. Serotype Asia 1 has never circulated within Africa; serotype C has not been identified anywhere since 2005 (2,3). SAT 3 FMDV is the least well-characterized serotype; the most recent incidence of SAT 3 reported by the FMD World Reference Laboratory (Pirbright Institute, Woking, UK) was in buffalo within the Kruger National Park (South Africa) in 2006. In contrast, SAT 1 and SAT 2 FMDVs are much more common; a major incursion of SAT 2 into the Middle East occurred in 2012 (4), and outbreaks caused by these serotypes have occurred in many African countries (http://www.wrlfmd.org/fmd_genotyping/2013.htm).

In Uganda, FMD is endemic, and serotypes O and SAT 2 are the most common. In Uganda, SAT 3 FMDV was most recently identified in 1997 in buffalo in the Queen

Elizabeth National Park (QENP) (5). SAT 1 and SAT 2 viruses were isolated from buffalo in QENP in 2006, and serologic test results indicated the presence of antibodies against SAT 3 virus; however, because cross-reactivity between serotypes occurs in these assays, this finding was not conclusive (6).

The Study

In 2013, as part of a study of FMDV transmission between wildlife, especially African buffalo (*Syncerus caffer*), and domestic animals, 20 long-horned Ankole cattle (≈ 6 months of age) were introduced as sentinel animals into Nyakatonzi (Kasese District), in close proximity to the QENP. At the time they were transported, these animals, originating from another area where FMD outbreaks had not been reported for ≈ 10 years, had no circulating antibodies against FMDV nonstructural proteins (NSPs) (measured by using the PrioCHECK FMDV NS ELISA kit [Prionics, Schlieren-Zurich, Switzerland]). Blood and probang samples (comprising oropharyngeal scrapings and fluid) were obtained from individual animals at 2-week intervals after their entry to the farm from which they moved regularly into the QENP for pasture and water. These sentinel animals freely mixed and grazed with buffalo (observed within a few meters of each other) and other local cattle. More than 6,000 buffalo are present within the QENP.

No clinical signs of FMD were observed in the sentinel cattle, but serum samples were assayed for antibodies against FMDV NSPs (serotype independent); RNA was extracted from the probang samples and analyzed for FMDV genomes by using pan-serotypic real-time reverse transcription PCR (RT-qPCR) (7). FMDV RNA was clearly detected (cycle threshold 21) in the probang sample from animal no. 34 at 2 weeks after its introduction into the QENP. Antibodies against FMDV NSPs had developed in this animal (Table 1), and we detected high-titer antibodies against both FMDV SAT 1 and SAT 3 antigens using solid-phase blocking ELISAs (SPBEs) (Table 1); hence this calf simultaneously had FMDV RNA in the oropharynx and antibodies against FMDV in serum. FMDV is maintained in the oropharynx of cattle for ≈ 10 days after infection (8) and continues after viremia has resolved coincident with the production of antibodies against FMDV. Infectious FMDV (albeit at low levels) can be maintained within the oropharynx after infection for up to 3 and 5 years in “carrier” cattle and buffalo, respectively (9). Seroconversion against FMDV NSPs was observed in a second animal (no. 33) by 30 days after introduction to the QENP (Table 1).

Author affiliations: Ministry of Agriculture Animal Industry and Fisheries, Entebbe, Uganda (M.T. Dhikusooka, C. Ayebazibwe, A. Namatovu, S. Ruhweza); Technical University of Denmark, Kalvehave, Denmark (K. Tjørnehøj, P. Normann, G.J. Belsham); Makerere University, Kampala, Uganda (A. Namatovu, S.N. Wekesa); University of Copenhagen, Copenhagen, Denmark (H.R. Siegismund); and Ministry of Livestock Development, Nairobi, Kenya (S.N. Wekesa)

DOI: <http://dx.doi.org/10.3201/eid2101.140995>

Table 1. Detection of anti-FMDV in serum and FMDV RNA in probang samples from long-horned Ankole calves, Uganda, 2013*

Sampling day†	Calf no. 34						Calf no. 33					
	Anti-NSP, PI	SPBE titers‡			FMDV RNA in probang, C _t	Anti-NSP, PI	SPBE titers‡			FMDV RNA in probang, C _t		
	O	SAT 1	SAT 2	SAT 3		O	SAT 1	SAT 2	SAT 3			
0	22	–	–	–	–	35	–	–	–	–		
14	55	–	160	–	80	25	<10	10	10	10		
30	72	–	80	–	40	63	20	160	10	10		

*C_t, cycle threshold; ELISA, enzyme-linked immunosorbant assay; FMDV, foot-and-mouth disease virus; PI, percentage inhibition values in the NSP ELISA (values >50% are considered positive and are indicated in boldface); NSP, nonstructural protein; RT-qPCR, real-time reverse transcription PCR; SAT, Southern African Territories; SPBE, solid-phase blocking ELISA; –, negative sample.

†Day 0 was defined as the day the sentinel animals arrived at the farm in Nyakatonzi (Kasese District).

‡An in-house serotype-specific SPBE was used; samples positive at 1:10 dilution were titrated; values are reciprocals of highest positive dilution.

§FMDV RNA in probang samples was assayed by RT-qPCR, and virus isolation was attempted from probang samples with detectable RNA and some other selected samples. The isolation of SAT 3 FMDV from the RT-qPCR–positive probang sample from calf no. 34 was demonstrated by serotype-specific antigen ELISA and confirmed by sequencing.

In the SPBEs, reactivity against SAT 1 was mainly detected in this animal. However, during the early stage of seroconversion, cross-reactivity occurs between the serotypes in these assays (K. Tjørnehøj, unpub. data).

An aliquot of the probang sample from calf no. 34 was inoculated onto primary bovine thyroid cells for virus isolation. We observed cytopathic effects within 48 hours and assayed the virus harvest using serotype-specific antigen ELISAs. We observed a strong signal (optical density 1.385), indicating SAT 3 FMDV with no significant signal for other serotypes (data not shown). The presence of FMDV RNA in the cell harvest was demonstrated by using RT-qPCR (cycle threshold 11), indicating isolation and growth of FMDV; the isolate was named SAT 3 UGA/1/13. To characterize this strain, we amplified the RNA region encoding viral protein (VP) 1 by RT-PCR; the amplicon

(821 bp) was sequenced with a BigDye Terminator v. 3.1 Cycle Sequencing Kit and an ABI PRISM 3730–DNA Analyzer (Applied Biosystems, Foster City, CA, USA).

Using BLAST (<http://blast.st.va.ncbi.nlm.nih.gov/Blast.cgi>) in MEGA5 (10), we found the sequence to be most closely related (81% identity) to the Ugandan SAT 3 buffalo isolate (UGA/2/97) (5) (Figure 1, panel A). The range of divergence was 19%–36% in this region of the genome (published VP1 coding sequences are mainly incomplete [5,11–13]; thus we analyzed only 390 nt from the 648 nt encoding VP1). The UGA/1/13 strain is most closely related to earlier Uganda SAT 3 viruses but is within a different lineage and is more divergent from SAT 3 viruses from southern Africa. The UGA/27/70 and UGA/2/97 viruses were assigned to topotypes V and VI, respectively (5); because the UGA/1/13 is ≈20% different from these

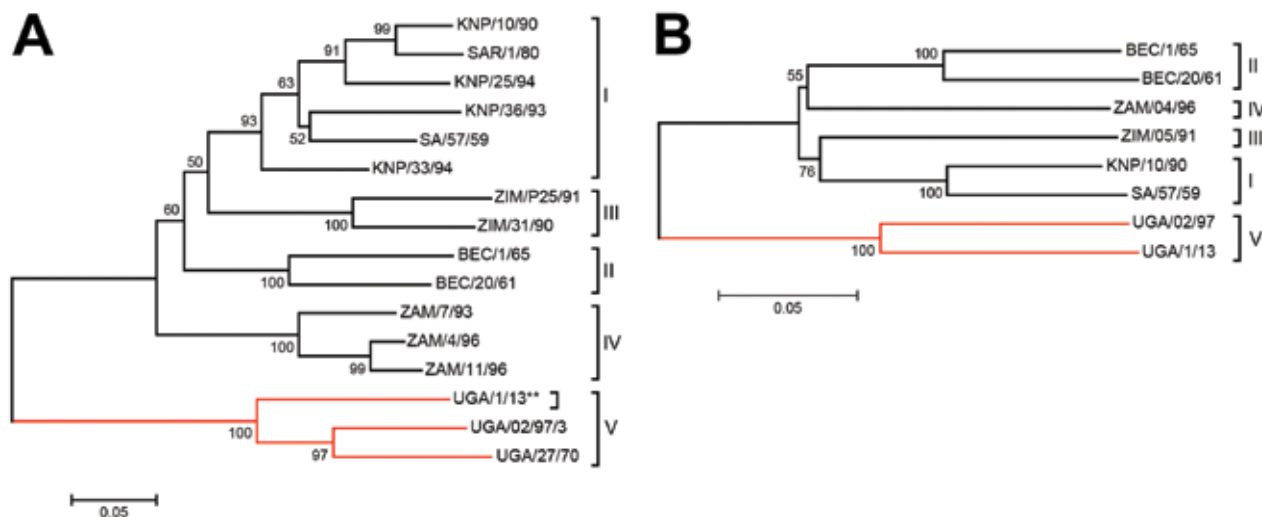


Figure 1. Neighbor-joining trees showing the relationships between A) the partial VP1 coding sequences (390 nt) and B) the complete P1 capsid protein coding sequence (2223 nt) from the SAT 3 FMDV UGA/1/13 isolate (marked with **) and other SAT 3 FMDVs within the indicated topotypes defined previously (5; http://www.wrlfmd.org/fmdv_seqs/fmdv-sat3_seq.aspx). The branches containing the Uganda viruses are indicated by the red lines. Sequences, other than for UGA/1/13, were obtained from GenBank and have been published previously (5,11–13). Bootstrap values are indicated. BEC, Bechuanaland (former name for Botswana); FMDV, foot-and-mouth disease virus; KNP, Kruger National Park (in South Africa); P1, precursor for the 4 capsid proteins; SAT, Southern African Territories; SAR, Republic of South Africa; UGA, Uganda; VP, viral protein; ZAM, Zambia; ZIM, Zimbabwe; I–V, topotypes. Scale bars indicate nucleotide substitutions per site.

	10	20	30	40	50	60
BEC/1/65	TTSAGEGADV	VTTDVTTHGG	EVSVPRRQHT	NVEFLLDLDRFT	HVGKVNESRT	ISLMDTKEHT
BEC/20/61I.TI.GH..	.C.L.....
KNP/10/90G..	A.DT.....I.TITG.K.	.D.....
SA/57/59G..	V.DT.....I.TITA.K.	.D.....
UGA/02/97	...S.....	.S.T.E....	TEQ.A.....	D.A.....	.I.SMAGTK.	LD.LT.....
UGA/1/13S.T.E....	TAQ.A.....	D.A.....	.I.P.TG.K.	LD.LT.....
ZAM/04/96N.TVH.....I.AMTT.K.	...L.....
ZIM/05/91	T.DT.....I.SITA.K.	.D.LE.....
	70	80	90	100	110	120
BEC/1/65	LVGAILRSAT	YYFCDLEVAI	LGTAPWAAWV	PNGCPTHGRV	EDNPVVHSGK	SVVRFALPYT
BEC/20/61V	.N.KY....D..
KNP/10/90V	.GK.V...T..A..	G.T.....
SA/57/59V	.SEK.T...E..A.N	G.A.....
UGA/02/97V	K.DS.Y....EVS..FA..	GLA.....
UGA/1/13	M.....V	.D.EH...IEVNNIFA..	G.A.....
ZAM/04/96V	.D.E.V...D..N	G.T.....F.
ZIM/05/91	...L.....V	.N.K.VG..D..A..	N.T.....
	130	140	150	160	170	180
BEC/1/65	APHGVLATVY	NGNCKYSETQ	RVTSRRGDLA	VLAQRVENET	TRCLPTTFNF	GRLLCCEEGDA
BEC/20/61T..	.AP.....G	A.SR.....	...I.....S..V
KNP/10/90K..	H.VP.....R.....DT..V
SA/57/59	...R.....K..	H.VA...M.S.I	...R.....T.EV
UGA/02/97	...Q.....	.T.V.RKNA	P..P.....Q	A.QA..DA.R	E..I..S...	...YA.S.EL
UGA/1/13	...R...I.	.T.V.KKNA	P.....Q	.Q...DA.R	E..I..S...	...YV.S.NL
ZAM/04/96S...	.T...K..	...P.....	.ST...T.Q	E.....A...DS..V
ZIM/05/91T.	.T...K..	S.KP...M.G.Q	Q..K.....DS..V
	190	200	210	216		
BEC/1/65	YYRMKRAELY	CPRPLRVRYT	HTTDRYKTPL	VKPKDQ		
BEC/20/61T...A.....	...E..		
KNP/10/90A...AK.	.A....		
SA/57/59IK.	.A....		
UGA/02/97	.L.....	...WIF....V..	T..E..		
UGA/1/13	.L.....	...W.F....H.VS.	...E..		
ZAM/04/96VA.	...E..		
ZIM/05/91M....VA.	.S.A..		

Figure 2. Predicted VP1 aa sequences of the 8 SAT 3 FMDVs used in the phylogenetic comparison in Figure 1, panel B. Clear similarities between the UGA/02/97 and UGA/1/13 viruses are apparent. BEC, Bechuanaland (former name for Botswana); FMDV, foot-and-mouth disease virus; KNP, Kruger National Park (in South Africa); SAR, Republic of South Africa; SAT, Southern African Territories; UGA, Uganda; VP, viral protein; ZAM, Zambia; ZIM, Zimbabwe.

strains, it could be designated as a new topotype. However, it seems better to classify these Uganda SAT 3 strains within a single topotype (V). The genome sequence (8,268 nt) of this SAT 3 virus was determined (GenBank accession no. KJ820999) from 17 overlapping amplicons (primer sequences available on request). Only 3 other full-genome sequences for SAT 3 FMDVs have been published (13); these are from southern African isolates obtained \approx 50 years ago. These sequences are \approx 80% identical to the UGA/1/13 isolate; this degree of diversity is not unexpected considering

the geographic and temporal separation between them. Relationships between the SAT 3 viruses were examined for different regions of the genome (Table 2). The P1–2A capsid coding regions differ the most (\approx 27%). Phylogenetic relationships between known SAT 3 P1 coding sequences were determined (Figure 1, panel B). Alignment of the predicted amino acid sequences for VP1 (Figure 2) indicates high levels of variation within important antigenic regions of the virus (especially the G–H loop, residues 140–160). Neighbor-joining trees for other regions of the genome showed very

Table 2. Comparison of full-genome nucleotide sequences between different regions of the SAT 3 UGA/1/13 isolate and other SAT 3 FMDVs, 2013*

Sequence region	Length, nt	Nucleotide differences from SAT 3 UGA/1/13, %†		
		SA/57/59	BEC/20/61	BEC/1/65
5' UTR‡ + L	1,680	24.0	24.1	22.7
P1–2A	2,282	26.6	27.1	27.1
P2	1,464	13.7	14.2	14.6
P3	2,700	13.8	13.8	13.9
3' UTR§	118	5.9	8.4	5.0
Full genome	8,268	19.1	19.5	19.3

*BEC, Bechuanaland (former name for Botswana); FMDV, foot-and-mouth disease virus; L, leader protein coding sequence; SAT, Southern African Territories; UGA, Uganda; UTR, untranslated region.

†These sequences were previously published (13).

‡The region from the poly(C) tract to the first initiation codon was used for the comparison.

§Excluding the poly(A) tail.

similar relationships (data not shown), indicating that these viruses are monophyletic.

Conclusions

Approximately 16 years after the most recent isolation of a SAT 3 FMDV from buffalo in Uganda, a new isolate (UGA/1/13) was obtained from an apparently healthy long-horned Ankole calf that was newly introduced into the QENP. To our knowledge, this is the first isolation of SAT 3 FMDV from cattle in East Africa. The VP1 coding sequence was ≈20% different from the most closely related virus strains within Uganda and up to 36% divergent from SAT 3 viruses from southern Africa. The Ugandan SAT 3 viruses should be classified within a single topotype (V), but this requires modification of the topotype definition used previously (5). Studies are needed to determine the consequences of infection of intensively farmed cattle by this virus.

Acknowledgments

We are grateful for excellent technical assistance from Jani Christiansen, Jane Borch, and Inge Nielsen. We also are grateful to Martin Esau and Eugene Arinaitwe for the field work.

We thank the Uganda Ministry of Agriculture, Animal Industry and Fisheries and the supervisory boards at Department of Environmental Management, College of Agricultural and Environmental Sciences, Makerere University, for the support given to work on FMD in Uganda. This study was funded by the Danish International Development Agency under the Transboundary Animal Diseases in East Africa Project. The authors have no competing interests.

The work presented here is part of a study clarifying the role played by cattle in maintaining the spread of FMDV in Uganda.

Dr. Dhikusooka is a veterinarian undertaking a PhD at Makerere University, Uganda, in a collaborative research program with the DTU National Veterinary Institute, Denmark. His research interests include epidemiology and dynamics of disease in livestock.

References

1. Knight-Jones TJ, Rushton J. The economic impacts of foot and mouth disease—what are they, how big are they and where do they occur? *Prev Vet Med.* 2013;112:161–73. <http://dx.doi.org/10.1016/j.prevetmed.2013.07.013>
2. Jamal SM, Belsham GJ. Foot and mouth disease; past, present and future. *Vet Res.* 2013;44:116. <http://dx.doi.org/10.1186/1297-9716-44-116>
3. Sangula AK, Siegismund HR, Belsham GJ, Balinda SN, Masembe C, Muwanika VB. Low diversity of foot-and-mouth disease serotype C virus in Kenya: evidence for probable vaccine strain re-introductions in the field. *Epidemiol Infect.* 2011;139:189–96. <http://dx.doi.org/10.1017/S0950268810000580>
4. Ahmed HA, Salem SA, Habashi AR, Arafat AA, Aggour MG, Salem GH, et al. Emergence of foot-and-mouth disease virus SAT 2 in Egypt during 2012. *Transbound Emerg Dis.* 2012;59:476–81. <http://dx.doi.org/10.1111/tbed.12015>
5. Bastos AD, Anderson EC, Bengis RG, Keet DF, Winterbach HK, Thomson GR. Molecular epidemiology of SAT3-type foot-and-mouth disease. *Virus Genes.* 2003;27:283–90. <http://dx.doi.org/10.1023/A:1026352000959>
6. Ayebazibwe C, Mwiine FN, Tjornehoj K, Balinda SN, Muwanika VB, Ademun Okurut AR, et al. The role of African buffalos (*Syncerus caffer*) in the maintenance of foot-and-mouth disease in Uganda. *BMC Vet Res.* 2010;6:54. <http://dx.doi.org/10.1186/1746-6148-6-54>
7. Callahan JD, Brown F, Osorio FA, Sur JH, Kramer E, Long GW, et al. Use of a portable real-time reverse transcriptase-polymerase chain reaction assay for rapid detection of foot-and-mouth disease virus. *J Am Vet Med Assoc.* 2002;220:1636–42. <http://dx.doi.org/10.2460/javma.2002.220.1636>
8. Stenfeldt C, Lohse L, Belsham GJ. The comparative utility of oral swabs and probang samples for detection of foot-and-mouth disease virus infection in cattle and pigs. *Vet Microbiol.* 2013;162:330–7. <http://dx.doi.org/10.1016/j.vetmic.2012.09.008>
9. Alexandersen S, Zhang Z, Donaldson AI, Garland AJ. The pathogenesis and diagnosis of foot-and-mouth disease. *J Comp Pathol.* 2003;129:1–36. [http://dx.doi.org/10.1016/S0021-9975\(03\)00041-0](http://dx.doi.org/10.1016/S0021-9975(03)00041-0)
10. Tamura K, Peterson D, Peterson N, Stecher G, Nei M, Kumar S. MEGA5: molecular evolutionary genetics analysis using maximum likelihood, evolutionary distance, and maximum parsimony methods. *Mol Biol Evol.* 2011;28:2731–9. <http://dx.doi.org/10.1093/molbev/msr121>
11. Bastos AD. Detection and characterization of foot-and-mouth disease virus in sub-Saharan Africa. *Onderstepoort J Vet Res.* 1998;65:37–47.
12. Samuel AR, Knowles NJ. Foot-and-mouth disease type O viruses exhibit genetically and geographically distinct evolutionary lineages (topotypes). *J Gen Virol.* 2001;82:609–21.
13. Carrillo C, Tulman ER, Delhon G, Lu Z, Carreno A, Vagnozzi A, et al. Comparative genomics of foot-and-mouth disease virus. *J Virol.* 2005;79:6487–504. <http://dx.doi.org/10.1128/JVI.79.10.6487-6504.2005>

Address for correspondence: Graham J. Belsham, National Veterinary Institute, Technical University of Denmark, Lindholm, DK-4771 Kalvehave, Denmark; email grbe@vet.dtu.dk



GovDelivery

Manage your email alerts so you only receive content of interest to you.

Sign up for an online subscription: <http://wwwnc.cdc.gov/eid/subscribe.htm>