

Comparison of Lunar Rocks and Meteorites: Implications to Histories of the Moon and Parent Meteorite Bodies

Martin Prinz, R. V. Fodor, and Klaus Keil
Department of Geology and Institute of Meteoritics
University of New Mexico
Albuquerque, New Mexico

There are many similarities between lunar samples and stone meteorites. Lunar samples, especially from the highlands, indicate that they have been affected by complex and repeated impact processes that can result in breccias with a wide variety of features produced by crushing; grinding; comminution; cataclasis; mixing (with other rock types and meteorites); partial or complete melting and mobilization; production of glass as matrix, agglutinates, spherules, fragments, and chondrules; solid-state recrystallization; impact melt as matrix or as essentially wholly new igneous rocks with ophitic, intersertal, poikilitic, or other textures; etc. Similar complex and repeated impact processes have also been operative on the achondritic and chondritic meteorites, but there has been much less detailed study of the effects of these processes and discussion of their implications. In this study, we draw attention to a number of similarities between lunar and meteoritic rocks and suggest that this comparison is essential for a clear understanding of meteorites as probes of the early history of the solar systems. (1) Monomict and polymict breccias occur in lunar rocks, as well as in achondritic and chondritic meteorites, having resulted from complex and repeated impact processes. (2) Chondrules are present in lunar meteorites, as well as in a few achondritic and most chondritic meteorites. They apparently crystallized spontaneously from molten highly supercooled droplets which may have formed from impact melts or, perhaps, volcanic processes (as well as from the solar nebula, in the case of meteoritic chondrites). It is pointed out that because chondrules may form in several different ways and in different environments, a distinction between the different modes of origin and an estimate of their relative abundance is important if their significance as sources of information on the early history of the solar system is to be clearly understood. (3) Lithic fragments are very useful in attempts to understand the preimpact and postimpact history of lunar and meteoritic breccias. They vary from little modified (relative to the apparent original texture) to partly or completely melted and recrystallized lithic fragments. Their detailed study allows conclusions to be drawn about their parent rock types and their origin, thereby gaining insight into preimpact histories of lunar and meteoritic breccias. There is considerable evidence that cumulate rocks were involved in the early history of both the Moon and parent meteorite bodies. In the light of knowledge derived from the lunar program and by continued study of meteoritic samples, we should learn more about the preimpact history of both rock groups and thereby be better prepared to make comparative studies of planetary bodies, particularly regarding their early histories.

One of the most important characteristics of lunar rocks, particularly from the lunar highlands, is that they have been greatly altered by intense, repeated impact bombardment. The histories of these rocks, both

preimpact and postimpact, are difficult to decipher, and interpretation of their genesis is a major goal of lunar research. There is general agreement that the lunar highland rocks originated as cumulates, although very few

original textures have survived the impact processes without major obliteration. About 90 percent of the highland rocks are polymict breccias (ref. 1) which are the result of complex impact processes. These breccias were produced by crushing; grinding; comminution; cataclasis; mixing (with other rock types as well as meteorites); partial or complete melting and mobilization; production of glass as matrix, agglutinates, spherules, fragments, and chondrules; solid-state recrystallization; crystallization of impact melt as matrix or as essentially wholly new igneous rocks with ophitic, intersertal, poikilitic, or other textures; etc. In spite of all these complications, some aspects of the pre-impact history of the cumulate rocks have been deciphered, and great progress has been made in interpreting their origins, although there is still much to be learned and some basic problems are yet to be resolved.

In the case of meteorites, particularly the ordinary chondrites, there is much less general agreement as to whether the textural features observed are "primary," i.e., were established during condensation from a solar nebula; whether they are "secondary," having been formed on a parent body or bodies by secondary (i.e., impact, volcanic, etc.) processes; or whether they formed by some combination of the two. There is much evidence and general agreement that many meteorites have been involved in impact events. However, there are only a few studies of meteorites in terms of deciphering their pre-impact and postimpact histories: Fredriksson et al. (ref. 2) pointed out that black veins in stone meteorites are shock-wave produced; Fredriksson and Keil (ref. 3) showed that the light-dark structures in the Kapoeta achondrite and the Pantar chondrite are due to impact brecciation; Fredriksson (refs. 4 and 5), Fredriksson and Reid (ref. 6), Urey (ref. 7), and Kurat et al. (ref. 8) maintained that ordinary chondrites formed in large-scale impact events on parent meteorite bodies. If impact processes were indeed involved with formation of chondrites and achondrites, one should expect to find the features observed in shock-modified lunar

rocks (if meteorites constitute a representative sample).

At this writing, we are only at the beginning of an era of comparative research of lunar and meteorite samples, and this type of work holds much promise for the future. We have studied both lunar rocks and meteorites (refs. 9 through 16), and other workers have identified impact-produced features in stone meteorites (e.g., refs. 17 through 23).

Since meteorites may have originated on small parent bodies with essentially no atmospheric cushion, many of their textural features must be impact- and regolith-produced, similar to what can be seen in lunar samples. In the present paper we draw attention to some of the similarities between lunar and meteoritic samples, mostly in the form of photographic analogs. It is hoped that some of the analogies will provoke other workers into studies whereby lunar and meteoritic samples will be used together in deciphering the histories of both groups of rocks and the processes that were effective on their parent bodies.

There are, of course, many ways of comparing lunar and meteoritic samples, but for the purpose of this paper we shall limit our examination to only three general areas: (1) evidence of impact brecciation, either monomict or polymict; (2) modes of origin of chondrules; and (3) origin and history of lithic fragments and their host breccias.

Lunar and Meteoritic Breccias

Many lunar highland rocks are complex monomict and polymict breccias and exhibit many of the characteristics associated with impact metamorphism. Several excellent examples of monomict breccias were found in the lunar highlands. One of the best known is anorthosite 15415, the "genesis rock" (see ref. 24). A group of eight other very similar rocks termed ferroan anorthosites were found in the Apollo 16 rake samples (ref. 25), indicating a widespread distribution of this rock type. Another important monomict breccia is dunite 72415, described by Albee

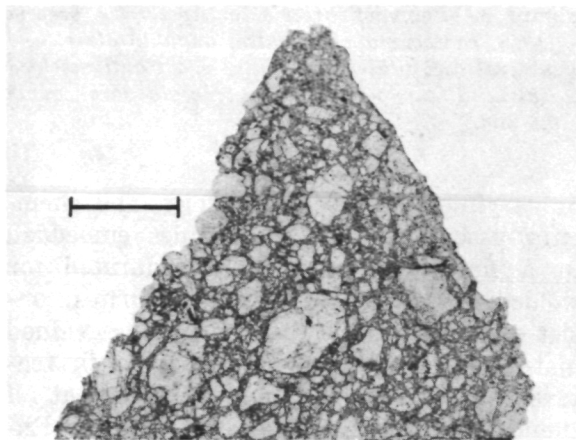


Figure 1.—*Monomict brecciated lunar dunite (72415). Plane polarized light; scale bar equals 0.25 cm. (Photo by A. Albee)*

et al. (ref. 26) and shown in figure 1. The matrix of the dunite formed as the result of crushing (without recrystallization) of the parent rock; other deformational characteristics are also present.

Several meteoritic analogs to lunar monomict breccias exist, particularly in achondritic meteorites. There, the enstatite achondrites and bronzite achondrites (terminology of Keil, ref. 27) consist mainly of what appear to be monomict breccias of enstatite and bronzite (orthopyroxenites). One example of a bronzite achondrite, or bronzitite, is Johnstown (fig. 2), which is texturally very similar to the lunar dunite (fig. 1). Portions of the Johnstown meteorite are unbrecciated and retain a preimpact, coarsely recrystallized texture with triple-point junctions between the bronzite grains. Brecciated and unbrecciated portions of this meteorite have identical bulk chemical compositions (ref. 28), indicating that, at least in this one case, the mineralogy and bulk chemistry of a monomict brecciated rock is the same as its preimpact parent.

Most lunar highland samples, however, are polymict breccias. They are particularly abundant at the Apollo 16 (ref. 29) and Apollo 14 sites (ref. 30). One such polymict breccia (14318), with a chondritic texture, has been described by Kurat et al. (ref. 31).

This rock differs, of course, from a meteoritic chondrite in its mineral and bulk chemistry and especially in its paucity of metal and troilite, but is very similar to chondrites in its texture. It consists of a fine-grained matrix into which are embedded lithic fragments, glasses, and chondrules of ANT suite, high-alumina basalt, and dunite composition. The rock is annealed and has a partly glassy matrix analogous to many relatively unre-crystallized chondrites. A similar Apollo 14 breccia, 14315, is shown in figure 3.

Analogous to this rock type exist in both achondritic and chondritic meteorites. Among the achondritic meteorites, the best examples of polymict breccias are the howardites. These have previously been considered to be polymict breccias by numerous workers (e.g., Duke and Silver, ref. 32), and the analogy to lunar breccias has reinforced the conclusion that they are impact-produced breccias from meteorite parent-body regoliths (refs. 21 and 33). Bunch (ref. 21) finds lithic fragments ranging from anorthositic gabbro to basalt to ferrobasalt in five howardites, which would appear to indicate stronger mineralogical and chemical similarity to lunar rocks than previously realized. An example of one of these howardites, Malvern, is shown in figure 4.

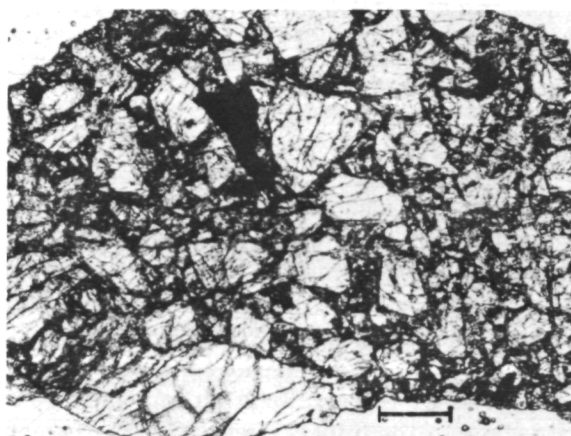


Figure 2.—*Monomict brecciated Johnstown bronzite achondrite or bronzitite. Note similarity in texture to lunar brecciated dunite (fig. 1). Plane polarized light; scale bar equals 0.5 mm.*

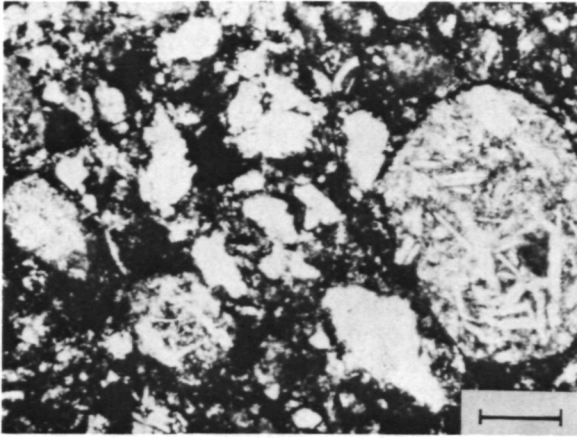


Figure 3.—Polymict brecciated Apollo 14 breccia 14315, containing chondrules, angular glass, and mineral and lithic fragments in a tightly welded matrix. Plane polarized light; scale bar equals 0.5 mm.

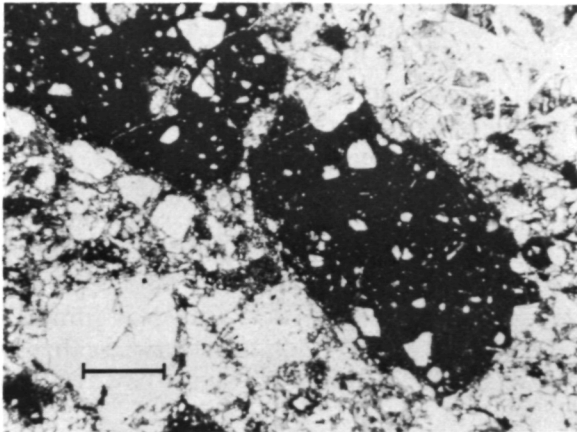


Figure 4.—Polymict brecciated achondrite Malvern, a howardite, containing dark angular breccia fragments, glass, mineral, and igneous lithic fragments in a tightly welded matrix. Plane polarized light; scale bar equals 0.5 mm.

Many chondrites, particularly those of the LL-group, are also brecciated, and it is sometimes difficult to determine whether they are monomict or polymict. One such example, Soko-Banja, is shown in figure 5. In some cases, the complex impact-produced relationships are further obscured by metamorphism which causes recrystallization and may be a late stage of the impact event or a later event superimposed on the impact features. The clearly brecciated chondrites exhibit these textures on the hand specimen level, and microscopic studies indicate lithic fragments

of varying textures, mineralogy, and chemistry associated with chondrules embedded in a finer grained, highly indurated, or welded matrix. Since many chondrites consist of chondrules embedded in fine-grained matrices and show evidence of shock features in the minerals, it is possible that all chondrites are breccias and that those without a visibly brecciated texture were originally comminuted on a finer scale and metamorphosed. Thus, there are many unresolved major problems with regard to the interpretation of the history of chondrites, as seen by the petrologist. These histories must then be correlated with studies of many types before final interpretations are possible.

Wahl (ref. 34) stressed the importance of polymict brecciated meteorites, but his descriptions were based largely on petrographic studies without chemical data. Nevertheless, there are now some well-established examples of polymict brecciated chondrites. Some of the more recent descriptions are given in references 5, 10, 12, 13, 14, 16, 17, 20, 35, and 36.

One of the best known examples of a meteoritic polymict breccia is Cumberland Falls, which consists of an enstatite achondrite host into which are embedded fragments of chondritic material. However, Fodor et al. (ref. 13) recently showed that achondritic material may be present in a chondrite: the Adams Co. chondrite contains a large lithic fragment of regolithic material consisting of smaller lithic and mineral fragments apparently derived from ureilites and enstatite achondrites. A photo of this fragment is shown in figure 6. Another group of polymict breccias currently receiving wide attention are C3 chondrites, such as Allende, which contain white Ca-Al-rich inclusions.

Even now it is already apparent that me-

Figure 5.—Brecciated LL-group chondrite Soko Banja, showing lithic fragments of various sizes, shapes, and textures. White lines around some fragments are fractures. Plane polarized light; scale bar equals 3 mm.

teorites, both achondrites and chondrites, show many of the impact features seen in lunar highland rocks. The conclusion appears therefore inescapable; namely, that parent meteorite bodies have been severely affected by impact processes, and that many of the textural features in achondrites and chondrites are the result of these complex and repeated impact processes, similar to the lunar case. It will be an important task of future lunar and meteoritic research to clearly describe these "secondary" features and distinguish them from "primary" features. Inevitably, this will lead to a clearer understanding of the history of parent meteorite bodies and to a better appreciation of what meteorites can tell us regarding the early history of the solar system.

Origin of Chondrules

Chondrules are characteristic features of chondritic stone meteorites and are thought by some to be primary bodies that condensed from a nebula of solar composition and then agglomerated to form parent meteorite bodies (refs. 37 through 40). They are thought by others to be secondary objects that formed from preexisting material by either volcanism (refs. 41 through 44), lightning discharge (ref. 45), shock melting of primitive dust (ref. 46), or impact splattering (refs. 4 through 8).

Lunar chondrules were found in some breccias and soils from most Apollo and Luna sites (e.g., ref. 47). Their textures are similar to those found in some meteorites, especially in unequilibrated ordinary chondrites which often have chondrules with glassy matrices. The lunar chondrules have textures that often appear to be due to a greater amount of supercooling as compared to those in chondrites, but quantification of

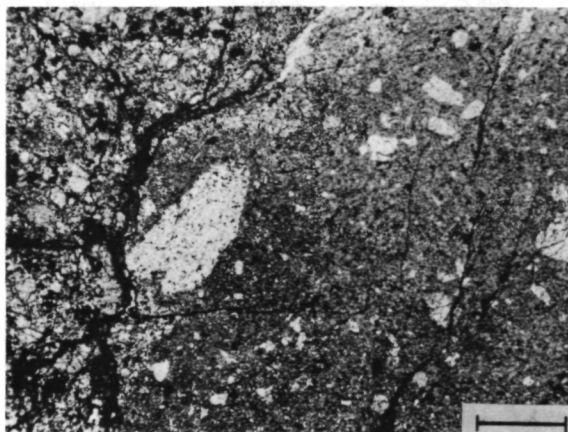
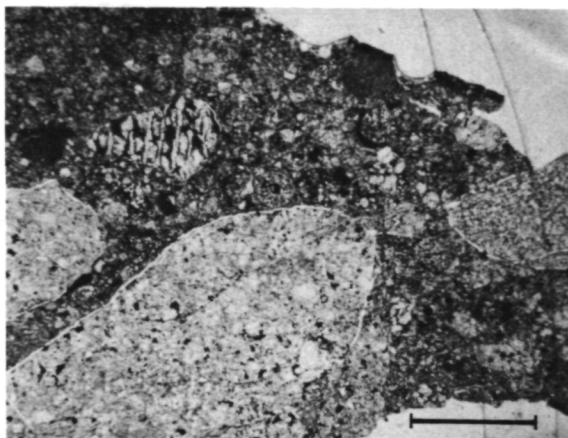


Figure 6.—Polymict brecciated H-group chondrite, Adams Co. Regolithic achondritic breccia fragment is right-hand two-thirds of photo (dark line is boundary). Left one-third of photo is chondritic host. Achondritic breccia fragment contains enstatite achondrite or enstatite subfragment (large white area) and smaller ureilite fragments. Plane polarized light; scale bar equals 1 mm.

this difference is difficult because of bulk compositions. Lunar and meteoritic chondrules are interpreted by most workers as being produced from molten droplets that have spontaneously crystallized from the highly supercooled state. However, the critical and controversial question is the origin of the molten droplets, especially in the case of meteorites. Recent experimental work has contributed significantly to an understanding of the origin of chondrules. In this work, sili-

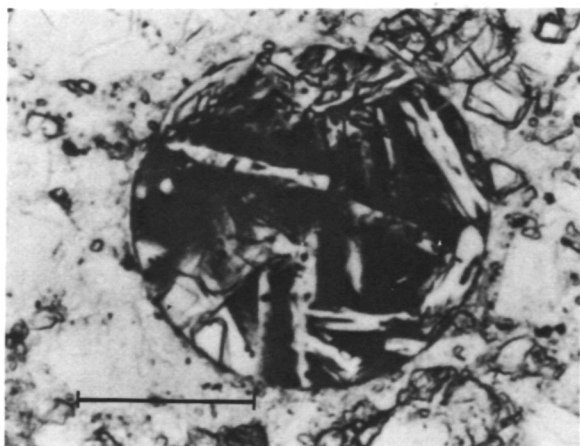


Figure 7.—An Apollo 16 chondrule, with plagioclase microphenocrysts, in a light matrix breccia (66036). Plane polarized light; scale bar equals 0.5 mm.

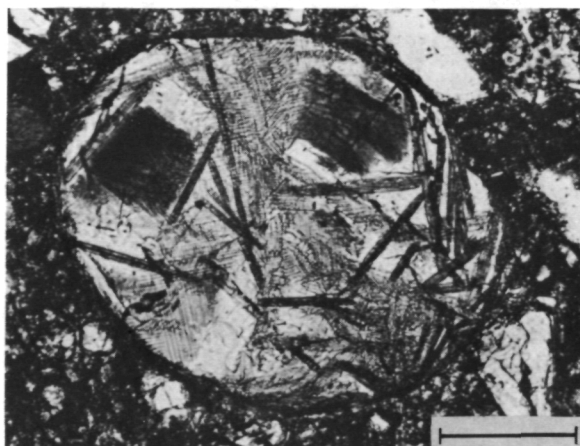


Figure 8.—An Apollo 15 green glass chondrule containing crystals of olivine and dark microcrystalline areas, in sample 15425. Plane polarized light; scale bar equals 0.15 mm.

cates were melted with the use of a CO_2 laser and allowed to fall freely into a variety of atmospheres. The freely falling molten droplets supercooled highly and crystallized spontaneously from the highly supercooled state, with the resulting spherules having typical chondrule textures (refs. 48 and 49). It is therefore concluded that both meteoritic and lunar chondrules formed by spontaneous crystallization of highly supercooled molten droplets, but nothing can be said from the experiments as to the origin of the molten droplets (i.e., whether they formed by condensation or by secondary processes such as volcanism or impact splattering).

In the case of some lunar chondrules, the mode of origin of the molten droplets is uncontroversial, being interpreted as having formed by impact splattering (ref. 47). An example of an impact-produced lunar chondrule is shown in figure 7. All gradations between glass spherules and chondrules, with microcratered surfaces indicative of repeated impact processes, were found in the lunar samples. Although some workers do not refer to these objects as chondrules and use such terms as "devitrified glass spherules," there is little or no disagreement that the crystallization in the chondrules occurred in the same event that formed the molten droplet; thus, the apparent difference in interpretation is merely a matter of terminology.

However, the origin of two other lunar chondrule types is somewhat uncertain and controversial. This is the green glass (one example of a great variety of textures is shown in fig. 8), which is most abundant at the Apollo 15 site, and the orange glass (one example is shown in fig. 9), which was found at the Apollo 11 and 17 sites. Most workers argue that orange glass was formed by a volcanic process (e.g., refs. 50, 51, and 52), such as fire-fountaining; we have suggested (ref. 53) that the volcanic event may have been triggered by a major impact event because the composition implies a major amount of partial melting of the same source rock as for high-Ti mare basalts. It has also been suggested that the orange glass may have formed by impact into a lava lake (ref. 54). Cameron et al. (ref. 55) suggested that green glass may be of volcanic origin, and Bunch et al. (ref. 56) stressed their ultramafic character, distribution at other sites, and abundance of chondrules. Since green glass has many of the same unique characteristics as orange glass, most workers would probably now assume a similar mode of origin. The character of the ill-defined volcanic

Figure 9.—An Apollo 17 orange glass chondrule containing crystals of olivine and an Fe-Ti phase (probably ilmenite), in sample 74220. Plane polarized light; scale bar equals 0.05 mm.

process responsible for green and orange glass is of critical importance to the interpretation of lunar history. Adams et al. (ref. 52) have shown that orange glass has a wide distribution on the lunar surface and is found in belts along the edges of major mare basins. The distribution of green glass deposits is not yet known. If these chondrules are indeed of volcanic origin, then this process must be reexamined for a possible mode of origin of at least some meteoritic chondrules.

In case of meteoritic chondrules, the problem is even more complicated. Only a few chondritic meteorites, namely the howardites, contain chondrule-like glass spherules, presumably of impact origin. One example from Bununu is shown in figure 10. If impact-produced glass spherules are found, then a small percentage of chondrules should also be present. Brownlee and Rajan (ref. 57) have indeed found such objects with microcratered surfaces in the howardite Kapoeta, a gas-rich meteorite formed as an impact-produced regolith breccia similar to the lunar regolith breccias. Noonan et al. (ref. 58) also found glass spherules in Bununu and Kapoeta and, in addition, in Malvern.

Chondrules, often with glassy matrices, are an important constituent of chondritic meteorites. Also, some chondrites contain glass spherules, especially unequilibrated ordinary chondrites. One example of a glass spherule in Chainpur is shown in figure 11. Two chondrules from the same meteorite are pictured in figure 12, and their textural similarity to the lunar orange-glass chondrule (fig. 9) should be noted. Thus, these similarities in texture for glass spherules and

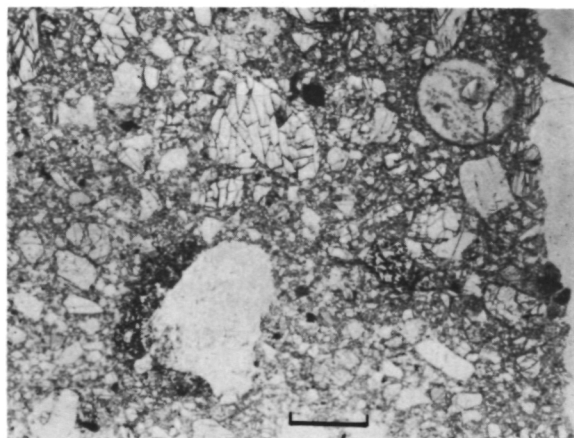
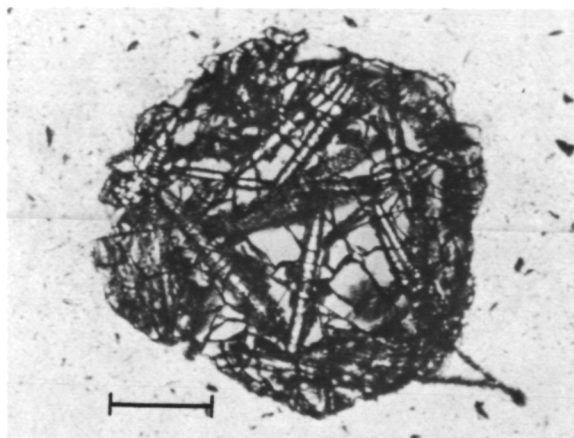


Figure 10.—Polymict brecciated achondrite Bununu, a howardite, with an impact-produced glass spherule (upper right), together with glass, mineral, and lithic fragments in an indurated matrix. Plane polarized light; scale bar equals 0.25 mm.

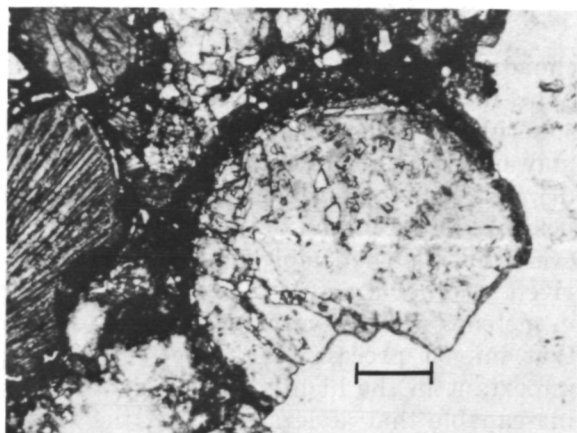


Figure 11.—A glass spherule in the unequilibrated LL-group chondrite, Chainpur. Fragmental material in spherule suggests that the spherule was impact-produced. Plane polarized light; scale bar equals 0.5 mm.

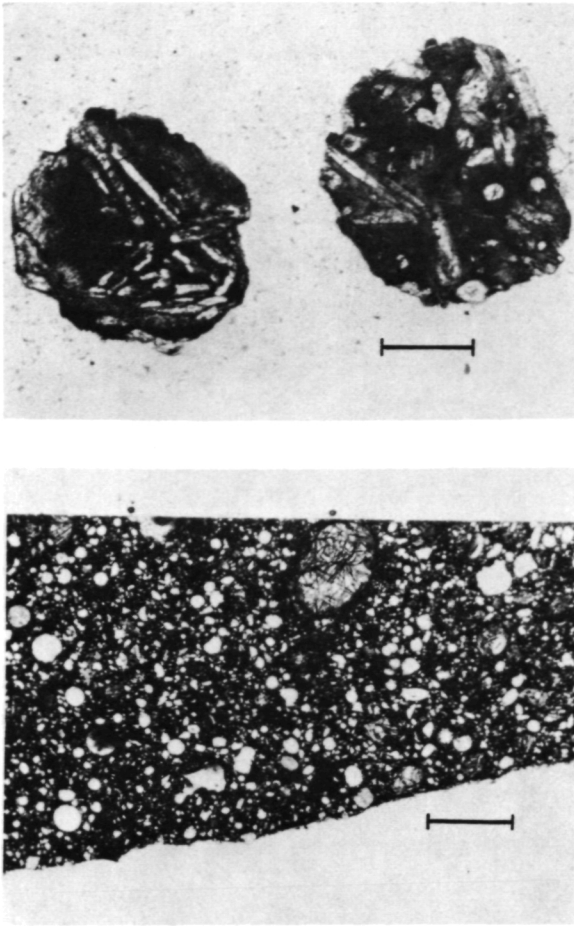


Figure 12.—Two chondrules from the unequilibrated LL-group chondrite, Chainpur. Chondrules are similar in texture to the orange glass chondrule (fig. 9). Plane polarized light; scale bar equals 0.2 mm.

Figure 13.—Apollo 15 green-glass breccia 15427, consisting largely of green glass spherules and chondrules. Note one large chondrule at top. The texture of this breccia is similar to that of many chondrule-rich chondrites, except for paucity of metal and troilite and differences in chemical composition. Plane polarized light; scale bar equals 1 mm.

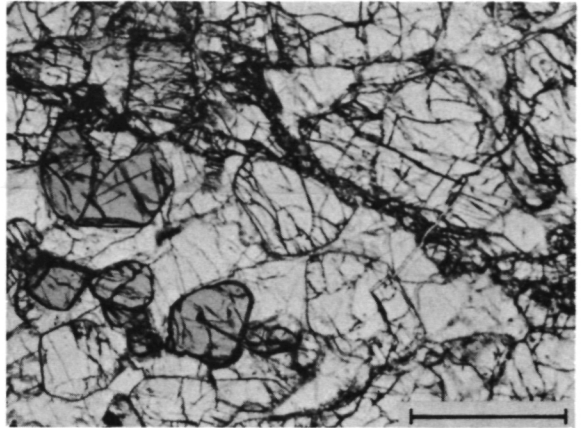
chondrules in meteoritic and lunar samples appear to imply that at least some of the spherules and chondrules in some meteorites may be the result of impact splattering (as in most lunar spherules) or volcanism (as possibly in green and orange glasses). However, this does not imply that chondrules derived by other processes are not also present in meteorites. However, since we have shown that impact processes have been extremely important in the history of chondrites, it is inescapable that at least some of the spher-

ules and chondrules must have been derived by this process. It should be noted that McDougall et al. (ref. 59) recently reported evidence that the H-group chondrite Fayetteville probably formed as a regolith on a parent meteorite body.

It is also interesting to note that Fredriksson et al. (ref. 60) have shown that regolithic breccias, impact glasses, and glass spherules can form terrestrially in terrestrial meteorite impact events. Also, chondrules were found in glassy microtektites from a sea floor core in the Venezuela basin (ref. 61). These additional occurrences confirm our earlier conclusion that chondrules are not unique to chondrites, but that they may form in a number of different ways and in different environments.

One of the arguments against lunar chondrules having an origin which may be relevant to meteorite chondrules has been that impact-produced chondrules make up only a small proportion of a lunar breccia, whereas meteoritic chondrules often constitute a very large proportion of a chondrite. While this argument does appear to be a strong one with regard to impact-produced glass, it is not the case for presumably volcanic-produced lunar chondrules, such as green and orange glass. A breccia consisting largely of green glass spherules and chondrules is shown in low magnification in figure 13. There is a strong similarity in texture with that of many chondrites, although the abundance of glass is much greater and there is very little metal and troilite, compared to chondrites. Although it is not necessarily implied that chondrites formed in a manner analogous to green and orange glass breccias, it should be recognized that the mode of origin of green and orange glass has not previously been recognized as a process for making meteoritic chondrules.

Figure 14.—Apollo 16 spinel troctolite 67435 lithic fragment. Dark euhedral crystals are Mg-Al spinel; light gray crystals are euhedral olivine; and both are poikilitically set in light-colored plagioclase matrix. Plane polarized light; scale bar equals 0.5 mm.



In summary, it may be said that chondrules and glass spherules in lunar rocks, meteorites, and on Earth can form in a variety of ways. All that is required is a process that produces molten silicate droplets which are given a chance to supercool and crystallize spontaneously from the highly supercooled state. In the case of lunar chondrules and glass spherules, this process is largely impact splattering, but volcanism or impact into a liquid cannot be ruled out. Because of the many indications for impact modification of chondrites and achondrites (e.g., brecciation), some meteoritic chondrules and glass spherules must have formed by impact as well. It is the subject of future studies to derive parameters that will allow one to distinguish between impact-produced meteoritic chondrules and those that may have formed by other processes (e.g., condensation, volcanism).

Lithic Fragments and Their Parent Material

Lithic fragments in lunar breccias and soils vary widely in textures; some appear to be only little modified, retaining their original (sometimes cumulate) textures, whereas others have partly modified textures, such as the cataclastic textures of monomict breccias, or are partly or completely melted or recrystallized. The lithic fragments are daughter products of an original parent rock or rocks (perhaps mixed together) and are sometimes in a matrix that may or may not be directly related to the parent. This makes any interpretation of the nature of the parental rocks an exceedingly difficult task, although some progress has been made.

One example of a possible parent in a parent-daughter relationship is that of spinel

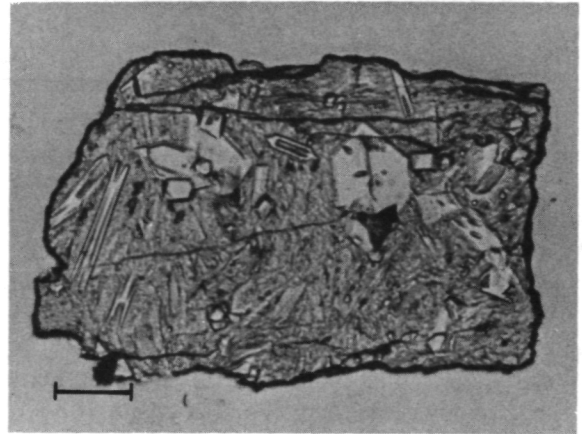


Figure 15.—Impact melt-rock lithic fragment in the Luna 20 fines, containing quench crystals of olivine (Fo_{95}) and Mg-Al spinel in a glassy matrix. Bulk chemistry is that of spinel troctolite. Plane polarized light; scale bar equals 0.025 mm.

troctolite 67435 (fig. 14), described by Prinz et al. (ref. 62). This is an important lunar rock type, but one that has rarely survived impact processes without major textural alterations. A large number of lithic fragments derived from spinel troctolites (perhaps with some addition of KREEP and/or ANT component) were found in the Luna 20 sample (ref. 63) and have a wide variety of textures. One example of a spinel-troctolite daughter derived by total melting and quenching is shown in figure 15; it consists of spinel, olivine, and glass with the bulk chemistry of a spinel troctolite.

Figure 16.—The meteorite Chassigny, an olivine achondrite, or dunite, consisting mainly of olivine crystals poikilitically included in exsolved pyroxene (striped areas), constituting a cumulate texture. In part, olivine crystals have triple junctions, indicating subsolidus recrystallization, probably immediately following igneous crystallization. Plane polarized light; scale bar equals 1 mm.

Analogs to this lunar situation also exist in meteorites. Some lithic fragments found in brecciated achondrites and chondrites may have been derived from cumulate parent rocks, such as the olivine achondrite, or dunite, Chassigny (ref. 64; fig. 16) and the bronzite achondrite, or bronzitite, Johnstown (ref. 28; fig. 2). Chassigny is shocked and unbrecciated and basically retains its partly igneous, partly recrystallized metamorphic (not by impact) texture; whereas Johnstown is mostly brecciated (monomict), but retains some of its originally coarsely recrystallized texture. The LL-group polymict-brecciated chondrite Olivenza contains numerous lithic fragments (unpublished data), two of which may be of interest because their parent rocks may be similar to Chassigny or Johnstown. One coarse-grained fragment (fig. 17) is olivine-rich and could have been derived from a rock such as Chassigny. The other fragment (fig. 18) consists almost entirely of orthopyroxene and could have been derived from a meteorite such as Johnstown. The orthopyroxene-rich fragment has a bulk composition of SiO_2 , 52.3 percent; FeO , 16.9 percent; MgO , 24.5 percent; and Cr_2O_3 , 0.35 percent (ref. 65). A comparison with the bulk chemistry of Johnstown (ref. 66) shows a striking similarity; Cr_2O_3 is somewhat lower, but Johnstown has more chromiferous orthopyroxene than the other bronzite achondrites. However, the possibility that these two fragments may have been derived from their host chondrite should not be discounted.

Figure 18.—A subrounded orthopyroxene-rich (bronzitite) lithic fragment in the brecciated LL-group chondrite, Olivenza. Plane polarized light; scale bar equals 0.5 mm.

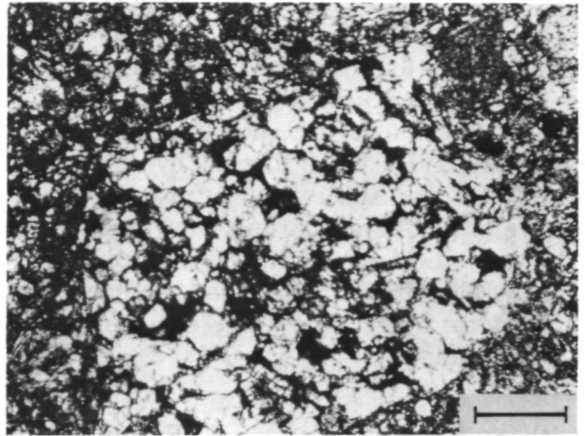
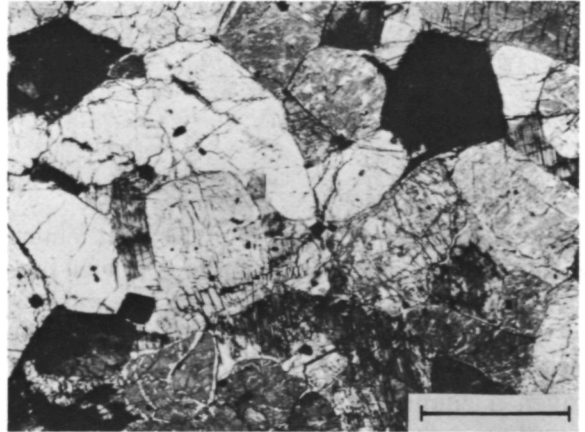
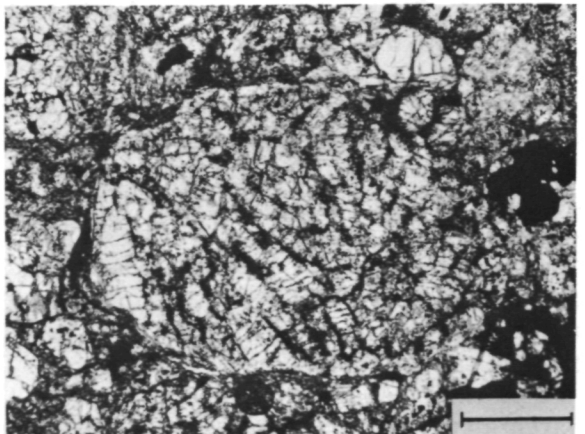


Figure 17.—A subrounded olivine-rich (dunite) lithic fragment in the brecciated LL-group chondrite, Olivenza. Plane polarized light; scale bar equals 1 mm.



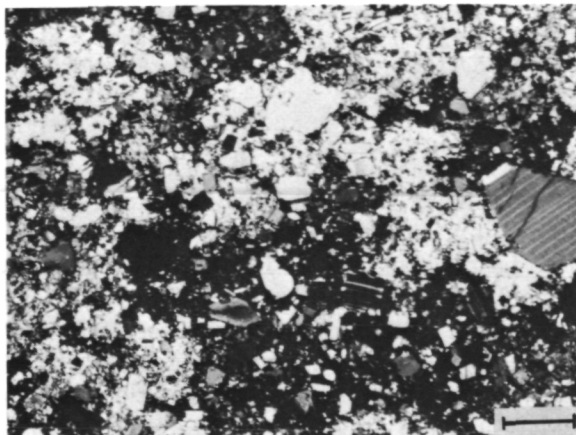


Figure 19.—An Apollo 16 polymict breccia 65778 with relict crystals and lithic fragments in a poikilitic matrix of low-Ca pyroxene oikocrysts. Crossed nicols; scale bar equals 0.25 mm.

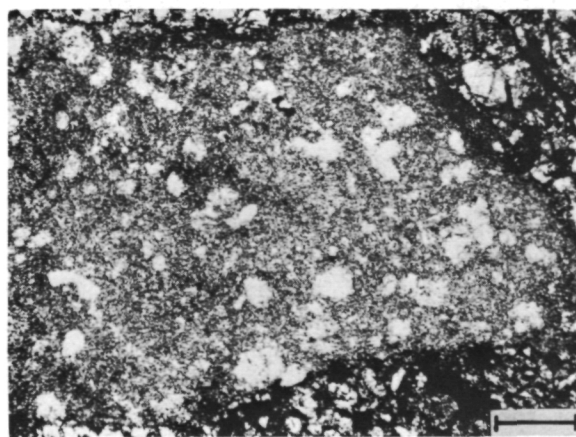
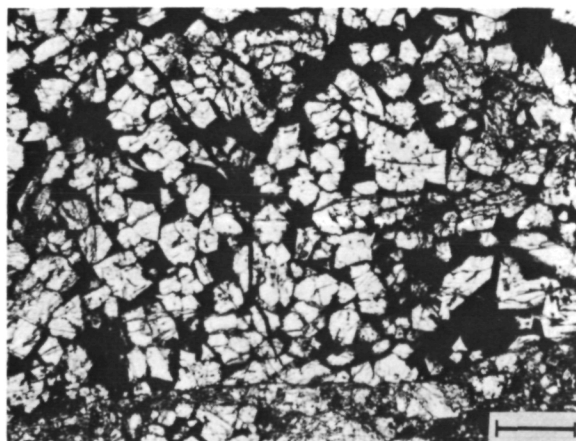


Figure 20.—A lithic fragment is the polymict brecciated H-group chondrite, Plainview, consisting of partly melted relict olivine crystals in a fine-grained olivine-feldspar (melt) matrix. Plane polarized light; scale bar equals 0.5 mm.



Sometimes the parent rock or rocks were only partly melted and relicts of the parent rock(s) are retained in a matrix of molten material. This appears to be the case in some of the lunar breccias which have a poikilitic-textured matrix with unmelted relict crystals (fig. 19). In meteorites, unmelted relict crystals in an igneous matrix are also found. One such meteorite (fig. 20), the H-group chondrite Plainview, shows a lithic fragment with relict olivine crystals (and minor pyroxene) in a fine-grained igneous groundmass that represents impact melt. In some cases the impact-derived melt rocks represent a melt formed from a mixture of two or more rock types. Some examples were cited by Dowty et al. (refs. 25 and 67), and further work is planned to check this hypothesis with regard to these and other samples. Melt rocks derived from mixtures of various rock types should be common products from regoliths on the Moon and on parent meteorite bodies. One meteoritic example of a possible mixture of two or more rock types to produce an igneous-textured lithic fragment is shown in figure 21. This fragment is from the LL-group chondrite Bhola which contains numerous fragments of this type. The fragments consist predominantly of olivine set in a groundmass of K_2O -rich glass (5 percent) with minor pyroxene crystallites; the texture is similar to those of the most supercooled lunar pyroxene-phyric rocks (ref. 68). Fredriksson et al. (ref. 22) suggest that these fragments indicate that the chondrite is probably a polymict breccia. Fodor et al. (ref. 14) suggest that the fragments are most rea-

Figure 21.—A large lithic fragment in the brecciated LL-group chondrite Bhola consisting mostly of euhedral olivine crystals in a dark matrix of pyroxene crystallites and high K_2O (~5 percent) glass. Porphyritic texture is the result of supercooling of the igneous melt. Plane polarized light; scale bar equals 0.5 mm.

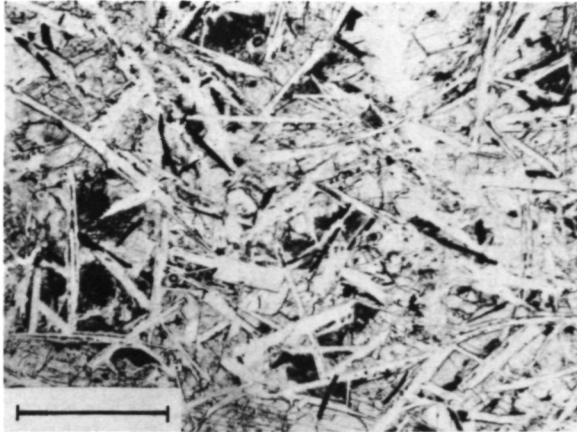


Figure 22.—A lunar melt rock (15382) with ophitic texture, having alkalic high-alumina basalt (KREEP) composition. Plane polarized light; scale bar equals 1 mm.

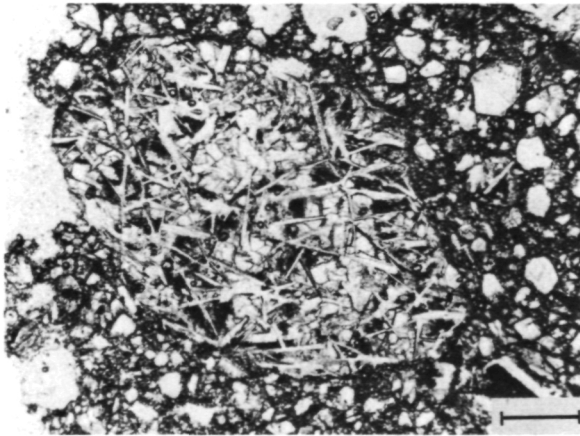


Figure 23.—A lithic fragment with ophitic texture, a probable impact melt rock, in the eucrite Pasamonte. Plane polarized light; scale bar equals 0.5 mm.

sonably explained as having crystallized from impact shock melts into an olivine-rich rock such as dunite (a chondrite is less reasonable because the fragments are essentially free of metal and troilite) and a K_2O -rich rock such as granite (chondrites have very low K_2O contents). Thus, these fragments, which are also present in other meteorites (unpublished data), may represent impact melting of a regolith with at least these two major rock components represented.

One of the most important results of the lunar program has been the realization that impact melting can produce abundant quan-

ties of igneous-textured rocks which are very difficult to distinguish texturally from internally generated igneous rocks. One of the best examples is 14310, although this conclusion remains controversial with some workers. A very similar lunar rock is 15382 (ref. 69), which is shown in figure 22. Even for rocks of this type, meteoritic analogs exist: a lithic fragment with a very similar texture from the eucrite Pasamonte is shown in figure 23. Although it is not certain at this time that either the lunar or meteoritic examples given here are really impact melts, their textures are strikingly similar to some rocks that have been interpreted as impact melts on the Moon, based on compositional data and evidence of meteoritic contamination. More quantitative criteria for distinguishing internally derived from externally generated melts are badly needed.

Another type of texture commonly seen in lunar lithic fragments and larger samples is granoblastic or equigranular. This is commonly seen in entire samples, or in matrices of samples, especially in feldspathic rocks. These rocks may retain relict, unrecrystallized crystals, but sometimes these are difficult to distinguish from newly crystallized grains. An example is shown in figure 24. This type of texture is also observed in lithic fragments in meteoritic breccias such as howardites and eucrites. One example of such a lithic fragment from the eucrite Bialystok is shown in figure 25. The fragment appears to be feldspar-rich, but has not yet been studied in detail.

Finally, there are similarities between lunar and meteoritic lithic fragments in the case of poikilitic or poikiloblastic textures. Detailed studies of poikilitic- or poikiloblastic-textured rocks with relict crystals, taken from the Apollo 16 site, were published by Simonds et al. (ref. 70), Bence et al. (ref. 71), Albee (ref. 72), and others. There is still some controversy as to the de-

Figure 24.—An Apollo 16 anorthosite (60619) with granoblastic texture. Crossed nicols; scale bar equals 0.5 mm.

tails of the processes involved, although most workers agree that the textures are related to impact events. An example of one of these rocks is shown in figure 19. Similar textures are also found in lithic fragments in meteorites. We have found such fragments in several LL-group chondrites (ref. 15), and one example, from the H-group chondrite Plainview, is shown in figure 26. Impacted melt rocks with poikilitic textures have also been identified in terrestrial impact structures, such as at Lake Mistasin, Canada (ref. 73). There, the target rock is known to be anorthositic, and the poikilitic melt rock is clearly an impact-generated derivative. Although it can be said with some confidence that some poikilitic- or poikiloblastic-textured rocks or fragments were derived as the result of impact processes, it should not be concluded that all material with these textures, especially meteoritic examples, formed in such a way. Some could have been derived from internally generated melts as well. Again, more criteria are needed that allow us to distinguish between the two processes.

Conclusions

By comparing structures and textures of lunar rocks and meteorites, it can be shown that monomict and polymict brecciation caused by complex and repeated impacts is recorded in both rock types. Sometimes the brecciation may be so intense, resulting in such fine-grained rocks, that it is difficult to recognize the brecciated nature. In meteorites, this includes both achondrites and chondrites. A very important part of future research is

Figure 26.—A large poikilitic-textured lithic fragment in the polymict brecciated H-group chondrite, Plainview, consisting mainly of olivine grains poikilitically enclosed in orthopyroxene. Crossed nicols; scale bar equals 0.25 mm.

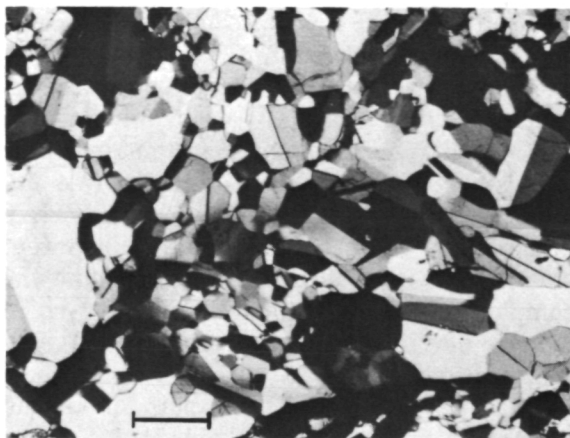
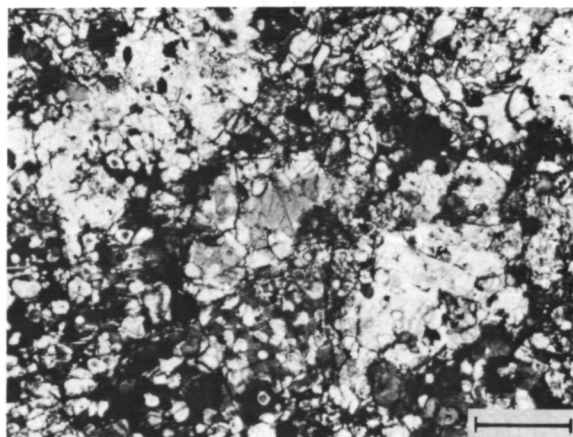


Figure 25.—A feldspar-rich granoblastic-textured lithic fragment in the eucrite, Bialystok. Compare with figure 24. Crossed nicols; scale bar equals 0.5 mm.



to disentangle the features that impact events left on meteorites from features caused by previous histories (i.e., planetary accretion, igneous differentiation), or from possibly still later histories, such as metamorphic recrystallization and reequilibration. We emphasize that any interpretation of the origin and history of meteorites and their parent bodies that does not take into account the complexities of their impact histories (which may or may not be easily recognizable) may be in serious error.

The origin of chondrules, both lunar and meteoritic, is not yet resolved. It does seem certain, however, that more than one process has been responsible for the chondrules present in both lunar and meteoritic rocks. On the Moon, chondrules appear to have formed by supercooling of molten droplets derived by impact and possibly volcanic processes (perhaps triggered by impact processes). In places they are very abundant, such as at green glass and orange glass sites. In meteorites, it seems clear that at least some chondrules and chondrule-like objects must have formed by impact processes; these are present in both achondrites and chondrites. Possibly some chondrules are also of volcanic origin, and others may have developed by remelting condensates from the solar nebula. The task for future research is to develop criteria for distinguishing between chondrules of different modes of origin and to estimate their relative abundances. This is a very important task indeed, if the significance of stone meteorites and, particularly, chondrites as probes into the early history of the solar system is to be clearly understood.

Impact processes can produce a variety of rock types from a parent rock. Applying the same type of interpretations as used for the Moon, it appears that polymict brecciated achondrites contain lithic fragments which preserve some history of their igneous (often cumulate) origin. Other brecciated achondrites are made up entirely of this material, some of which are monomict breccias. The cumulates are olivine-rich, pyroxene-rich, plagioclase-rich and, in fact, involve gener-

ally the same mineralogy as lunar rocks. Some achondrites contain lithic fragments of mafic rock types which obviously crystallized from melts, but the origin of these melts, either from within the planet, by impact melting of a rock, or by impact melting of a mechanical mixture in the regolith, has not yet been established. After this question has been solved, we can begin to better reconstruct the history of the parent body or bodies. Chondrites are also brecciated and, therefore, could not have escaped some of the inevitable effects of an impact history. Some lithic fragments may have been derived by impact brecciation and melting or brecciation of cumulate rocks, but this is not at all certain yet. Detailed studies of individual chondrites, especially brecciated ones, are necessary to determine the effects of the variety of processes that have been operative.

Thus, the time has come to take a new look at meteorites, taking into account the results of the lunar programs. It is already apparent that meteorite parent bodies, just like the Moon, have been affected by complex and repeated impact processes, and all the complexities that such processes have caused in lunar rocks appear to be present in meteorites. It is therefore of the utmost importance that workers from many different disciplines unite in an effort to decipher these complex histories in stone meteorites and compare them to lunar rocks. Only when these processes and their resulting textural and compositional features are clearly understood can the significance of meteorites as probes for the early history of small planetesimals in the solar system be clearly recognized.

Acknowledgment

The authors wish to express appreciation to personnel of the Smithsonian Institution, Washington, D.C., and the Center for Meteorite Studies, Arizona State University, Tempe, Arizona, who have generously provided meteorite samples and meteorite polished thin sections. In addition, they wish to

thank Dave Lewis for assistance in preparing the photomicrographs and the National Aeronautics and Space Administration for a travel grant to attend the Soviet-American Conference on Cosmochemistry of the Moon and the Planets, Moscow, U.S.S.R. This work is supported in part by NASA grants NGL 32-004-063 and NGL 32-004-064.

References

1. WARNER, J. L., C. H. SIMONDS, AND W. C. PHINNEY, Impact Induced Fractionation in the Lunar Highlands. *Proc. Fifth Lunar Science Conference, Geochimica et Cosmochimica Acta*, Supplement 5, Vol. 1, 1974, pp. 379-397.
2. FREDRIKSSON, K., P. S. DE CARLI, AND A. AARMAE, Shock-Induced Veins in Chondrites. *Space Sci. III (COSPAR)*, North Holland Pub. Co., 1962.
3. FREDRIKSSON, K., AND K. KEIL, The Light-Dark Structure in the Pantar and Kapoeta Stone Meteorites. *Geochimica et Cosmochimica Acta*, Vol. 27, 1963, pp. 717-739.
4. FREDRIKSSON, K., Chondrules and the Meteorite Parent Bodies. *Trans. N.Y. Acad. Sci.*, Series 11, Vol. 25, 1963, pp. 756-769.
5. FREDRIKSSON, K., E. JAROSEWICH, AND J. NELEN, The Sharps Chondrite—New Evidence on the Origin of Chondrules and Chondrites. *Meteorite Research*, P. Millman, ed., D. Reidel Pub. Co., Dordrecht, Holland, 1969, pp. 155-165.
6. FREDRIKSSON, K., AND A. M. REID, A Chondrule in the Chainpur Meteorite. *Science*, Vol. 149, 1965, pp. 856-860.
7. UREY, H. C., Parent Bodies of the Meteorites. *Icarus*, Vol. 7, 1967, pp. 350-359.
8. KURAT, G., K. FREDRIKSSON, AND J. NELEN, Der Meteorit von Siena. *Geochimica et Cosmochimica Acta*, Vol. 33, 1969, pp. 765-773.
9. FODOR, R. V., K. KEIL, AND E. JAROSEWICH, The Oro Grande, New Mexico, Chondrite and its Lithic Inclusion. *Meteoritics*, Vol. 7, 1972, pp. 495-507.
10. FODOR, R. V., AND K. KEIL, Carbonaceous and Non-Carbonaceous Lithic Inclusions in the Plainview, Texas, Chondrite (abs.). *Meteoritics*, Vol. 8, 1973, p. 33.
11. KEIL, K., AND R. V. FODOR, Composition and Origins of Lithic Fragments in LL-Group Chondrites (abs.). *Meteoritics*, Vol. 8, 1973, pp. 394-396.
12. FODOR, R. V., AND K. KEIL, Composition and Origin of Lithic Fragments in L- and H-Group Chondrites (abs.). *Meteoritics*, Vol. 8, 1973, pp. 366-367.
13. FODOR, R. V., M. PRINZ, M. G. BROWN, AND K. KEIL, A Chondrite With a Regolith Fragment Containing Non-Chondritic Material (abs.). *Meteoritics*, Vol. 9, 1974, pp. 337-338.
14. FODOR, R. V., M. PRINZ, AND K. KEIL, Implications of K-Rich Lithic Fragments and Chondrules in the Bhola Brecciated Chondrite. *Program, 87th Geol. Soc. Amer. Annual Meeting*, 1974, pp. 739-740.
15. FODOR, R. V., AND K. KEIL, Composition and Origin of Lithic Fragments in LL-Group Chondrites. *Geochimica et Cosmochimica Acta*, in preparation, 1974.
16. FODOR, R. V., AND K. KEIL, Carbonaceous and Non-Carbonaceous Lithic Inclusions in the Plainview, Texas, Chondrite: Origin and History. *Geochimica et Cosmochimica Acta*, in press.
17. VAN SCHMUS, W. R., Polymict Structure of the Mesö-Madaras Chondrite. *Geochimica et Cosmochimica Acta*, Vol. 31, 1967, pp. 2027-2042.
18. BUNCH, T. E., AND D. STÖFFLER, The Kelly Chondrite: A Parent Body Surface Metabreccia. *Contr. Mineral. Petrol.*, Vol. 44, 1974, pp. 157-171.
19. WILKENING, L. L., Foreign Inclusions in Stony Meteorites: I. Chondritic Xenoliths in the Kapoeta Howardite. *Geochimica et Cosmochimica Acta*, Vol. 37, 1973, pp. 1985-1989.
20. WILKENING, L. L., AND R. N. CLAYTON, Foreign Inclusions in Stony Meteorites: II. Rare Gases and Oxygen Isotopes in a Carbonaceous Chondritic Xenolith in the Plainview Gas-Rich Meteorite. *Geochimica et Cosmochimica Acta*, Vol. 38, 1974, pp. 937-945.
21. BUNCH, T. E., Howardites: Parent Body Surface Breccias (abs.). *Meteoritics*, Vol. 10, 1975, pp. 91-92.
22. FREDRIKSSON, K., A. F. NOONAN, AND J. A. NELEN, The Bhola Stone—A True Polymict Breccia? (abs.). *Meteoritics*, Vol. 9, 1974, pp. 334-335.
23. DODD, R. T., St. Mesmin: A Petrologic Overview (abs.). *Meteoritics*, Vol. 9, in press, 1974.
24. JAMES, O. B., Lunar Anorthosite 15415: Texture, Mineralogy and Metamorphic History. *Science*, Vol. 175, pp. 432-434.
25. DOWTY, E., K. KEIL, AND M. PRINZ, Igneous Rocks From Apollo 16 Rake Samples. *Proc. Fifth Lunar Science Conference, Geochimica et Cosmochimica Acta*, Supplement 5, Vol. 1, 1974, pp. 431-445.
26. ALBEE, A. C., A. A. CHODOS, R. F. DYMEK, A. J. GANCARZ, D. J. GOLDMAN, D. A. PAPANASTASSIOU, AND G. J. WASSERBURG, Dunite From the Lunar Highlands: Petrography Deformational History, Rb/Sr Age. *Proc. Fifth Lunar Science Conference, Abstracts*, 1974, pp. 3-5.
27. KEIL, K., Meteorite Composition. *Handbook of*

- Geochemistry*, Vol. 1, Springer-Verlag, 1969, pp. 78-115.
28. PRINZ, M., P. H. HLAVA, AND K. KEIL, Petrology of the Johnstown Achondrite, an Orthoproxenite. In preparation, 1974.
 29. WARNER, J. L., C. H. SIMONDS, AND W. C. PHINNEY, Apollo 16 Rocks: Classification and Petrogenetic Model. *Proc. Fourth Lunar Science Conference, Geochimica et Cosmochimica Acta*, Supplement 4, Vol. 1, 1973, pp. 481-504.
 30. WARNER, J. C., Metamorphism of Apollo 14 Breccias. *Proc. Third Lunar Science Conference, Geochimica et Cosmochimica Acta*, Supplement 3, Vol. 1, 1972, pp. 623-643.
 31. KURAT, G., K. KEIL, AND M. PRINZ, Rock 14318: A Polymict Lunar Breccia With Chondritic Texture. *Geochimica et Cosmochimica Acta*, Vol. 38, 1974, pp. 1133-1146.
 32. DUKE, M. B., AND L. T. SILVER, Petrology of Eucrites, Howardites and Mesosiderites. *Geochimica et Cosmochimica Acta*, Vol. 31, 1967, pp. 1637-1665.
 33. REID, A. M., The Macibini Meteorite and Some Thoughts on the Origin of Basaltic Achondrites (abs.). *Meteoritics*, Vol. 9, 1974, pp. 398-399.
 34. WAHL, W., The Brecciated Stony Meteorites and Meteorites Containing Foreign Fragments. *Geochimica et Cosmochimica Acta*, Vol. 2, 1952, pp. 91-117.
 35. KURAT, G., Zur Genese des kohligen Materials im Meteoriten von Tieschitz. *Earth Planet. Sci. Letters*, Vol. 7, 1970, pp. 317-324.
 36. DODD, R. T., H-Group Xenoliths in the St. Mesmin LL-Group Chondrite. *Geochimica et Cosmochimica Acta*, in press, 1974.
 37. SUSS, H. E., Zur Chemie der Planeten- und Meteoritenbildung. *Z. Elektrochem.*, Vol. 53, 1949, pp. 237-241.
 38. WOOD, J. A., Metamorphism in Chondrites. *Geochimica et Cosmochimica Acta*, Vol. 26, 1962, pp. 739-749.
 39. BLANDER, M., AND J. L. KATZ, Condensation of Primordial Dust. *Geochimica et Cosmochimica Acta*, Vol. 31, 1967, pp. 1025-1034.
 40. BLANDER, M., AND M. ABDEL-GAWAD, The Origin of Meteorites and the Constrained Equilibrium Theory. *Geochimica et Cosmochimica Acta*, Vol. 33, 1969, pp. 701-716.
 41. TSCHERMAK, G., Die Bildung der Meteoriten und der Vulkanismus. *Sitzungsber. Akad. Wiss. Wien*, Vol. 71, 1875, pp. 661-673.
 42. MERRILL, G. P., On Chondrules and Chondritic Structure in Meteorites. *Proc. Nat. Acad. Sci.*, Vol. 6, 1920, pp. 449-472.
 43. RINGWOOD, A. E., Chemical and Genetic Relationships Among Meteorites. *Geochimica et Cosmochimica Acta*, Vol. 24, 1961, pp. 159-197.
 44. FREDRIKSSON, K., AND A. E. RINGWOOD, Origin of Meteoritic Chondrules. *Geochimica et Cosmochimica Acta*, Vol. 27, 1963, pp. 639-641.
 45. WHIPPLE, F. L., Chondrules: Suggestion Concerning Their Origin. *Science*, Vol. 153, 1966, p. 54.
 46. WOOD, J. A., On the Origin of Chondrules and Chondrites. *Icarus*, Vol. 2, 1963, pp. 152-180.
 47. KURAT, G., K. KEIL, M. PRINZ, AND C. E. NEHRU, Chondrules of Lunar Origin. *Proc. Third Lunar Science Conference*, Vol. 1, 1972, pp. 707-721.
 48. NELSON, L. S., M. BLANDER, S. R. SKAGGS, AND K. KEIL, Use of a CO₂ Laser To Prepare Chondrule-Like Spherules From Supercooled Molten Oxide and Silicate Droplets. *Earth Planet. Sci. Letters*, Vol. 14, 1972, pp. 338-344.
 49. KEIL, K., M. PRINZ, H. N. PLANNER, S. R. SKAGGS, E. DOWTY, L. S. NELSON, N. L. RICHARDSON, AND M. BLANDER, A Qualitative Comparison of Textures in Lunar Chondrules and CO₂ Laser-Formed Synthetic Chondrule-Like Spherules. Univ. of New Mexico, Inst. of Meteoritics, Spec. Pub. 7, 1973.
 50. REID, A. M., G. E. LOFGREN, G. H. HEIKEN, R. W. BROWN, AND G. MORELAND, Apollo 17 Orange Glass, Apollo 15 Green Glass and Hawaiian Lava Fountain Glass. *EOS, Trans. Am. Geophys. Union*, Vol. 54, 1973, pp. 606-607.
 51. HEIKEN, G., D. S. MCKAY, AND R. W. BROWN, Lunar Deposits of Possible Pyroclastic Origin. *Geochimica et Cosmochimica Acta*, in press, 1974.
 52. ADAMS, J. B., C. PIETERS, AND T. B. MCCORD, Orange Glass: Evidence for Regional Deposits of Pyroclastic Origin on the Moon. *Proc. Fifth Lunar Science Conference, Geochimica et Cosmochimica Acta*, Supplement 5, Vol. 1, 1974, pp. 171-186.
 53. PRINZ, M., E. DOWTY, AND K. KEIL, A Model for the Origin of Orange and Green Glasses and the Filling of Mare Basins. *EOS, Trans. Am. Geophys. Union*, Vol. 54, 1973, pp. 605-606.
 54. ROEDDER, E., AND P. W. WEIBLEN, Origin of Orange Glass Spherules in Apollo 17 Sample 74220. *EOS, Trans. Am. Geophys. Union*, Vol. 54, 1973, pp. 612-613.
 55. CAMERON, K. L., J. W. DELANO, A. E. BENCE, AND J. J. PAPIKE, Petrology of the 2-4 mm Soil Fraction From the Hadley-Apennine Region of the Moon. *Earth Planet. Sci. Letters*, Vol. 19, 1973, pp. 9-21.
 56. BUNCH, T. E., W. QUAIDE, M. PRINZ, K. KEIL, AND E. DOWTY, Lunar Ultramafic Glasses, Chondrules, and Rocks. *Nature Phys. Sci.*, Vol. 239, 1972, pp. 57-59.
 57. BROWNLEE, D. E., AND R. S. RAJAN, Micrometeorite Craters Discovered on Chondrule-Like

- Objects From Kapoeta. *Science*, Vol. 182, 1973, pp. 1341-1344.
58. NOONAN, A. F., R. S. RAJAN, AND A. A. CHODOS, Microprobe Analyses of Glassy Particles From Howardites (abs.). *Meteoritics*, Vol. 9, 1974, pp. 385-386.
59. MCDUGALL, D., R. S. RAJAN, AND P. B. PRICE, Gas-Rich Meteorites: Possible Evidence for Origin in a Regolith. *Science*, Vol. 183, 1974, p. 73.
60. FREDRIKSSON, K., A. DUBE, AND D. MILTON, Microbreccias, Impact Glasses, and Spherules From Lunar Crater, India; Lunar Analogs (abs.). *Meteoritics*, Vol. 8, 1973, p. 34.
61. JOHN, C., AND B. GLASS, Clinopyroxene-Bearing Glass Spherules Associated With North American Microtektites. *Geology*, Vol. 2, 1974, pp. 599-602.
62. PRINZ, M., E. DOWTY, K. KEIL, AND T. E. BUNCH, Spinel Troctolite and Anorthosite in Apollo 16 Samples. *Science*, Vol. 179, 1973, pp. 74-76.
63. PRINZ, M., E. DOWTY, K. KEIL, AND T. E. BUNCH, Mineralogy, Petrology and Chemistry of Lithic Fragments From Luna 20 Fines: Origin of the Cumulate ANT Suite and its Relationship to High-Alumina and Mare Basalts. *Geochimica et Cosmochimica Acta*, Vol. 37, 1973, pp. 979-1006.
64. PRINZ, M., P. H. HLAVA, AND K. KEIL, The Chassigny Meteorite: A Relatively Iron-Rich Cumulate Dunite (abs.). *Meteoritics*, Vol. 9, 1974, pp. 393-394.
65. FODOR, R. V., AND K. KEIL, Catalogue of Lithic Fragments in 20 LL-Group Chondrites. Univ. of New Mexico, Spec. Pub., in preparation, 1974.
66. MASON, B., AND E. JAROSEWICH, The Composition of the Johnstown Meteorite. *Meteoritics*, Vol. 4, 1971, pp. 241-245.
67. DOWTY, E., M. PRINZ, AND K. KEIL, Very High Alumina Basalt: A Mixture and Not a Magma Type. *Science*, Vol. 183, 1974, pp. 1214-1215.
68. DOWTY, E., K. KEIL, AND M. PRINZ, Lunar Pyroxene-Phyric Basalts: Crystallization Under Supercooled Conditions. *J. Petrology*, Vol. 15, 1974, pp. 419-453.
69. DOWTY, E., M. PRINZ, K. KEIL, AND T. E. BUNCH, Non-Mare Rock Types in Apollo 15 Rake Samples (abs.). *Geol. Soc. Am. Abstracts*, Vol. 4, 1972, pp. 491-492.
70. SIMONDS, C. H., J. C. WARNER, AND W. C. PHINNEY, Petrology of Apollo 16 Poikilitic Rocks. *Proc. Fourth Lunar Science Conference, Geochimica et Cosmochimica Acta*, Supplement 4, Vol. 1, 1973, pp. 613-632.
71. BENCE, A. E., J. J. PAPIKE, S. SUENO, AND J. W. DELANO, Pyroxene Poikiloblastic Rocks From the Lunar Highlands. *Proc. Fourth Lunar Science Conference, Geochimica et Cosmochimica Acta*, Supplement 4, Vol. 1, 1973, pp. 597-612.
72. ALBEE, A. L., A. J. GANCARZ, AND A. A. CHODOS, Metamorphism of Apollo 16 and 17 and Luna 20 Metaclastic Rocks at About 3.95 AE: Samples 61156, 64423,14-2, 65015, 67483,15-2, 76055, 22006 and 22007. *Proc. Fourth Lunar Science Conference, Geochimica et Cosmochimica Acta*, Supplement 4, Vol. 1, 1973, pp. 569-596.
73. GRIEVE, R. A. F., A. G. PLANT, AND M. R. DENCE, Lunar Impact Melts and Terrestrial Analogs: Their Characteristics, Formations, and Implications for Lunar Crustal Evolution. *Proc. Fifth Lunar Science Conference, Geochimica et Cosmochimica Acta*, Supplement 5, Vol. 1, 1974, pp. 261-273.