

# NASA Contractor Report 3353

NASA  
CR  
3351-  
pt. 3  
c. 1



## A System for Aerodynamic Design and Analysis of Supersonic Aircraft

### Part 3 - Computer Program Description

W. D. Middleton, J. L. Lundry,  
and R. G. Coleman

LOAN COPY: RETURN TO  
AFWA TECHNICAL LIBRARY  
WRIGHT PATT. AIR. CR.

CONTRACT NAS1-15534  
DECEMBER 1980





# NASA Contractor Report 3353

## A System for Aerodynamic Design and Analysis of Supersonic Aircraft

### Part 3 - Computer Program Description

W. D. Middleton, J. L. Lundry,  
and R. G. Coleman  
*Boeing Commercial Airplane Company*  
*Seattle, Washington*

Prepared for  
Langley Research Center  
under Contract NAS1-15534



National Aeronautics  
and Space Administration

**Scientific and Technical  
Information Branch**

1980



# CONTENTS

	Page
1.0 SUMMARY . . . . .	1
2.0 DISCUSSION . . . . .	3
2.1 Executive Module . . . . .	5
2.2 Geometry Module . . . . .	9
2.3 Skin Friction Module . . . . .	23
2.4 Near-Field Wave Drag Module . . . . .	28
2.5 Wing Design and Optimization Module . . . . .	51
2.6 Lift Analysis Module . . . . .	77
2.7 Wing Pressure Summary Module . . . . .	106
 APPENDIX - Interactive Graphics Subroutines . . . . .	 111
 REFERENCES . . . . .	 119

## 1.0 SUMMARY

An integrated system of computer programs has been developed for the design and analysis of supersonic configurations.

The system consists of an executive driver and eight basic computer programs including a plot module, which are used to build up the theoretical force coefficients of a selected configuration.

Documentation of the system has been broken into four parts:

- Part 1 - General Description & Theoretical Development (CR-3351)
- Part 2 - User's Manual (CR-3352)
- Part 3 - Computer Program Description (CR-3353)
- Part 4 - Test Cases (CR-3354).

This part, the computer program description, contains schematics of the program structure and written descriptions of the individual overlays and subroutines.

These four documents supersede NASA contractor reports CR-2715, CR-2716, and CR-2717, which described an earlier version of the system.

Interactive graphics for use with the system are optional, employing the NASA-LRC CRT display and associated software.

The computer program is written in FORTRAN IV for a NOS operating system. It is designed for the CDC 6600 series of computers and is overlay structured. The system requires approximately 135000<sub>8</sub> (octal) central memory words and uses twelve disk files in addition to the input, output, and punch files.



## 2.0 DISCUSSION

A schematic of the design and analysis system overlay structure is shown in figure 2.0-1. The system is a single overlaid program, with the executive driver as the main overlay and the basic programs as primary overlays. The basic programs manipulate input (geometry module), draw a picture of the configuration (plot module), perform design or analysis calculations, or summarize wing pressure data.

The format of the computer program documentation is to present schematics or block diagrams of the major program structure, together with subroutine descriptions, for each module developed under the design and analysis system contract. The plot and far-field wave drag modules are not included in this procedure, since they are described in other NASA documentation (references 1 and 2). The arbitrary fuselage option in ANLZ was obtained from Rockwell International, and is described briefly.

The description of the overlay structure follows the convention of labeling overlays with octal numbers, but calling them with their decimal equivalents.

A typical test case and associated program output is given in the Test Cases document (Part 4).

For reference, subroutines that are part of the design and analysis system called by a particular program are listed, although standard library routines are not.

### File Usage

File usage in the system is assigned as follows:

1	basic geometry storage
2	interface file
3	restart data
5	input
6	output
9	interface file for arbitrary fuselage input in ANLZ module (NT13). Also scratch file for plot module and far-field wave drag module
10	scratch file for upwash data from arbitrary fuselage solution (NT14)
11	scratch file for fuselage geometry and pressure data from arbitrary fuselage solution (NT15)
10, 11, 12	scratch files for far-field wave drag module
11, 12	scratch files for plot module

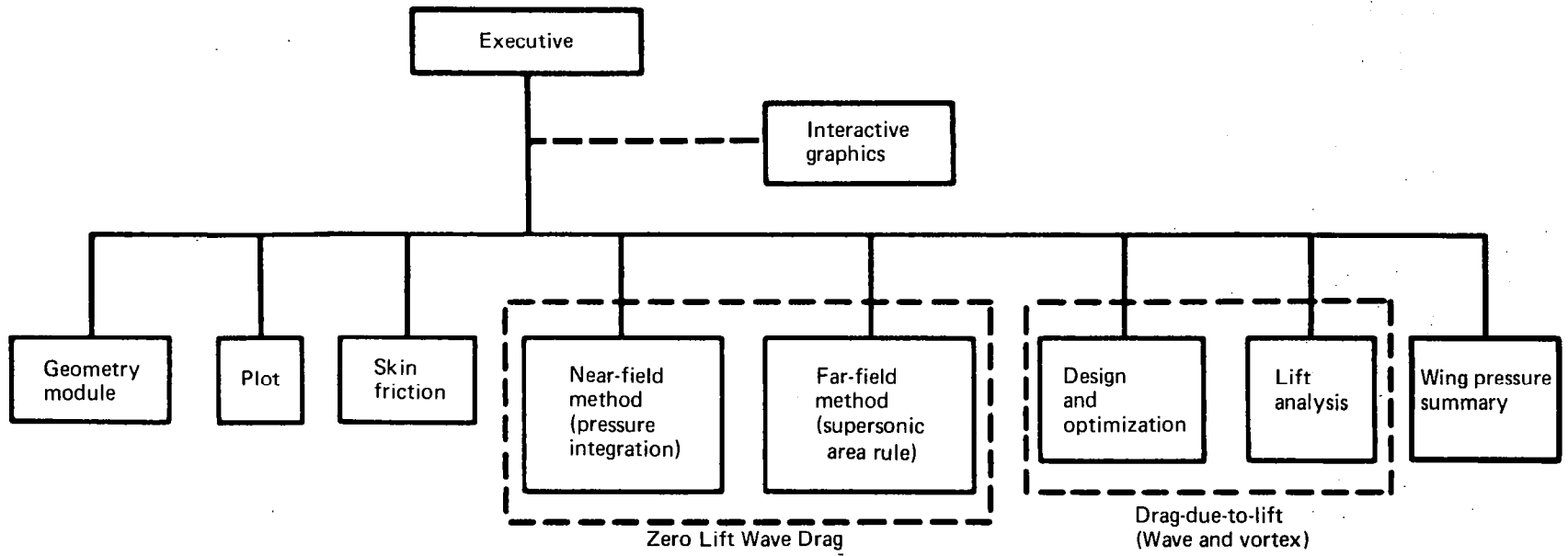


FIGURE 2.0-1.—INTEGRATED SUPERSONIC DESIGN AND ANALYSIS SYSTEM



16	storage file for lifting pressure data (NT16)
17	storage file for nacelle pressure field data (NT17)
19	storage file for wing pressure data (NT19)
20	storage file for component pressure data (NT20)

The file order on the program card is as follows:

INPUT, OUTPUT, TAPE5=INPUT, TAPE6=OUTPUT, PUNCH, TAPE1, TAPE2,  
TAPE3, TAPE9, TAPE10, TAPE11, TAPE12, TAPE16, TAPE17, TAPE19,  
TAPE20, TAPE99

### Program Structure

A block diagram of the design and analysis system is shown in figure 2.0-2. The largest element of the system occurs with the lift analysis module loaded, and is approximately 135000g.

These core sizes are for an absolute version of the program.

### 2.1 EXECUTIVE MODULE

The executive level (0,0 overlay) is used to read executive control cards and request execution of the basic programs (primary overlays) as instructed. The executive cards are described in the User's Manual (Part 2) and summarized under subroutine CHECKIN (page 7).

#### Program A389A00

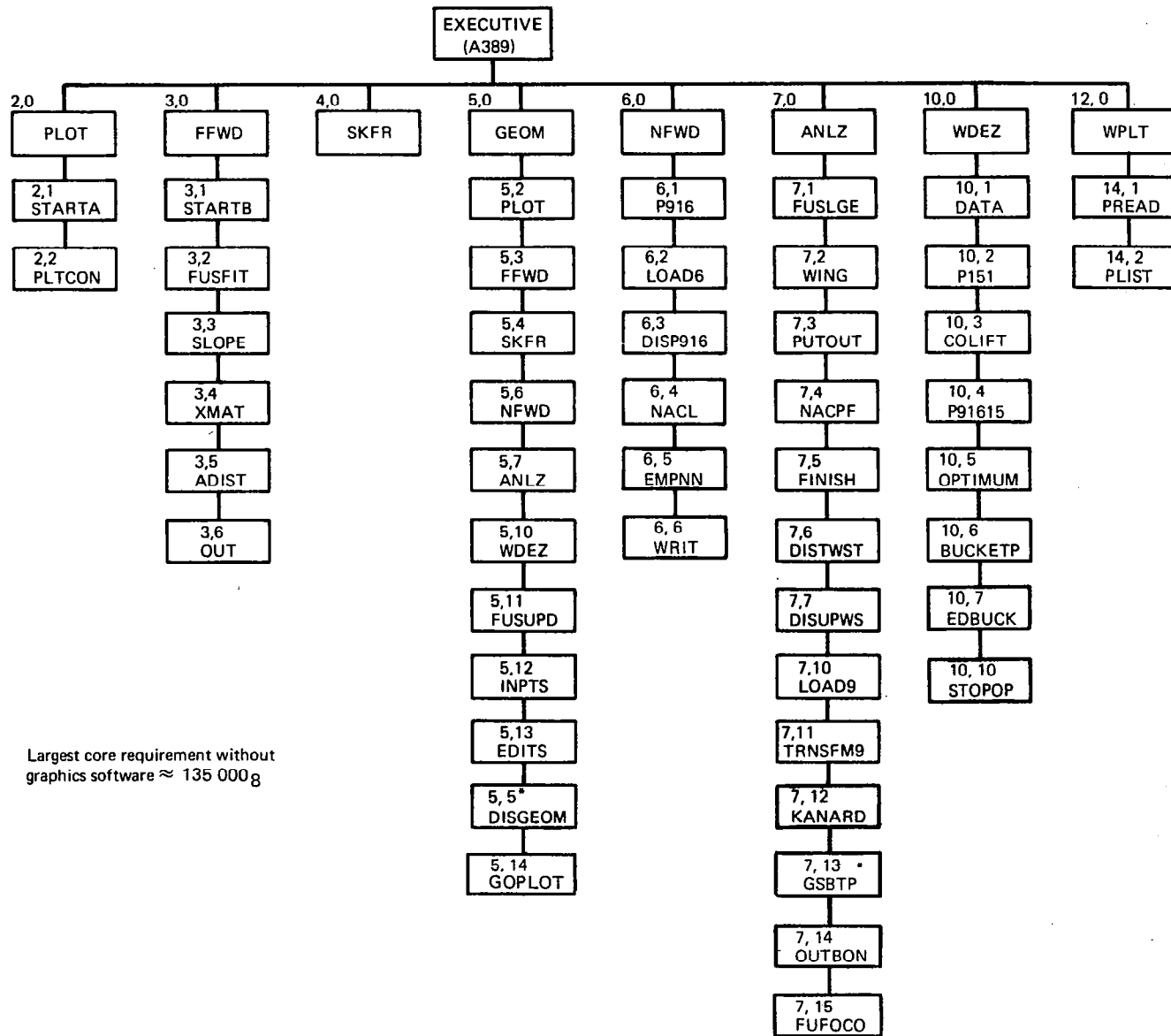
**PURPOSE:** To read program executive cards and call primary overlays.

**METHOD:** A389A00 is the program name assigned to the executive level (A389, 0, 0). It reads executive cards, calls subroutine CHECKIN to find the corresponding overlay number, calls the geometry module to read or sort input, then calls the appropriate primary overlay for problem execution.

CRT is a special executive card used only to turn on (or off) the graphics routines as described in the User's Manual, Part 2.

**INPUT:** Executive cards (see User's Manual)

**SUBROUTINES CALLED:** CHECKIN



Largest core requirement without graphics software  $\approx$  135 000g

FIGURE 2.0-2.—SYSTEM OVERLAY STRUCTURE

## Program CHECKIN

PURPOSE: To identify primary overlay number corresponding to executive card.

METHOD: The overlay number for the different primary overlays is determined by variable PROG, in common block/SAV1/. CHECKIN sets the value of IPRG by finding the executive card word corresponding to PROG. The correspondence is:

<u>EXECUTIVE CARD (PROG)</u>	<u>IPRG</u>
PLOT	2
FFWD	3
SKFR	4
GEOM	5
NFWD	6
ANLZ	7
WDEZ	8
FSUP	9
WGUP	10
WPLT	12

USE: CALL CHECKIN

INPUT: Variable PROG in common block SAV1

SUBROUTINES CALLED: None

## Function TBLU1 Integer Function LOOKUP

PURPOSE: To perform linear or second order interpolation from one-dimensional array.

METHOD: TBLU1 and the associated integer function LOOKUP are general purpose interpolation routines, for either linear or second order interpolation. The program call is:

Z = TBLU1 (X, XX, Y, MD, N)

where

X independent variable  
XX array containing independent variable  
Y array containing dependent variable  
MD code defining interpolation type  
1 = linear  
2 = second order  
N number of variables in array XX or y

Z dependent variable (answer)

Array XX must be monotonically increasing.

USE: Z =TBLU1 (X, XX, Y, MD, N)

INPUT: As described above

SUBROUTINES CALLED: TBLU1 calls associated subroutine LOOKUP

## 2.2 GEOMETRY MODULE

The geometry module is primary overlay 5. It contains subprograms to read, store, or display the configuration geometry, and to set up the input for the other basic programs. A schematic of the geometry module is shown in Figure 2.2-1.

### Program PDPACK

**PURPOSE:** To route geometry handling requests from the executive to geometry routines, based on executive control cards.

**METHOD:** Program PDPACK is the primary level of the geometry module. It is entered from the executive to store, add, or change input data; to update wing camber surface or fuselage basic geometry; or to enter the interface routines to set up input data for the other modules. A schematic of PDPACK is shown in figure 2.2-2.

The executive control cards corresponding to variables in PDPACK are as follows:

#### EXECUTIVE CARD

GEOM NEW	IFIRST=0	EDITS
GEOM	IFIRST=1	INPTS, EDITS
PLOT	IPRG=2	INPTS, GEOMPLT
FFWD	IPRG=3	INPTS, GEOM80
SKFR	IPRG=4	INPTS, GEOM158
NFWD	IPRG=6	INPTS, GEOM916
ANLZ	IPRG=7	INPTS, GEOM201
WDEZ	IPRG=8	INPTS, GEOM253
FSUP	IPRG=9	INPTS, FUSUPD
WGUP	IPRG=10	INPTS, NEWCAM
WPLT	IPRG=12	INPTS, GOPLOT

Configuration geometry is read from cards in program EDITS and stored on tape 1 when the geometry module is not in core. Program INPTS retrieves the geometry from tape 1 when the geometry module is called. Subroutines WRGEOM and PRINTG write the configuration geometry on tape 1 for storage or print the geometry onto the output file, respectively.

The interface programs write data onto tape 2, which becomes the input tape for the individual basic modules.

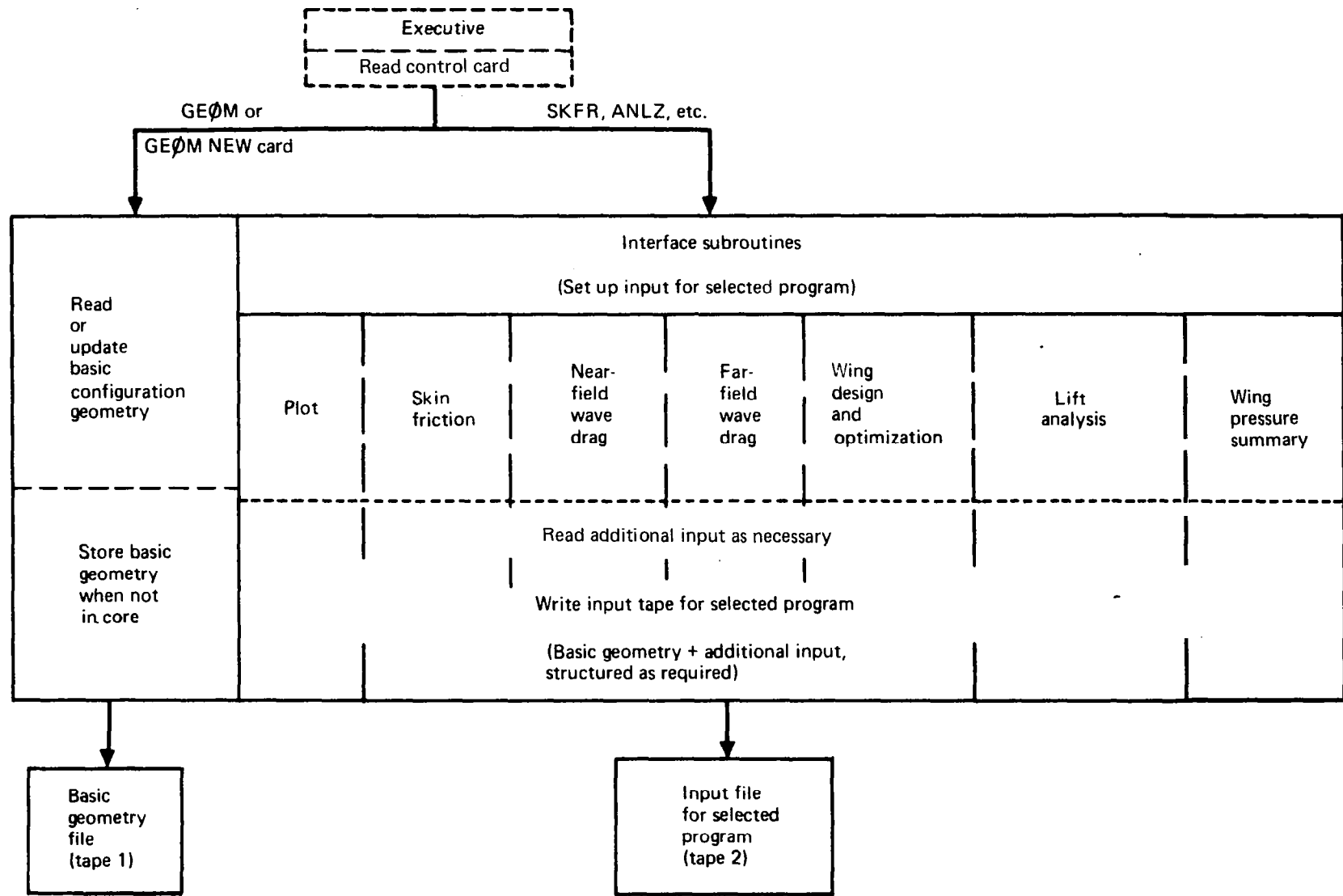


FIGURE 2.2-1.—SCHEMATIC OF GEOMETRY MODULE

11

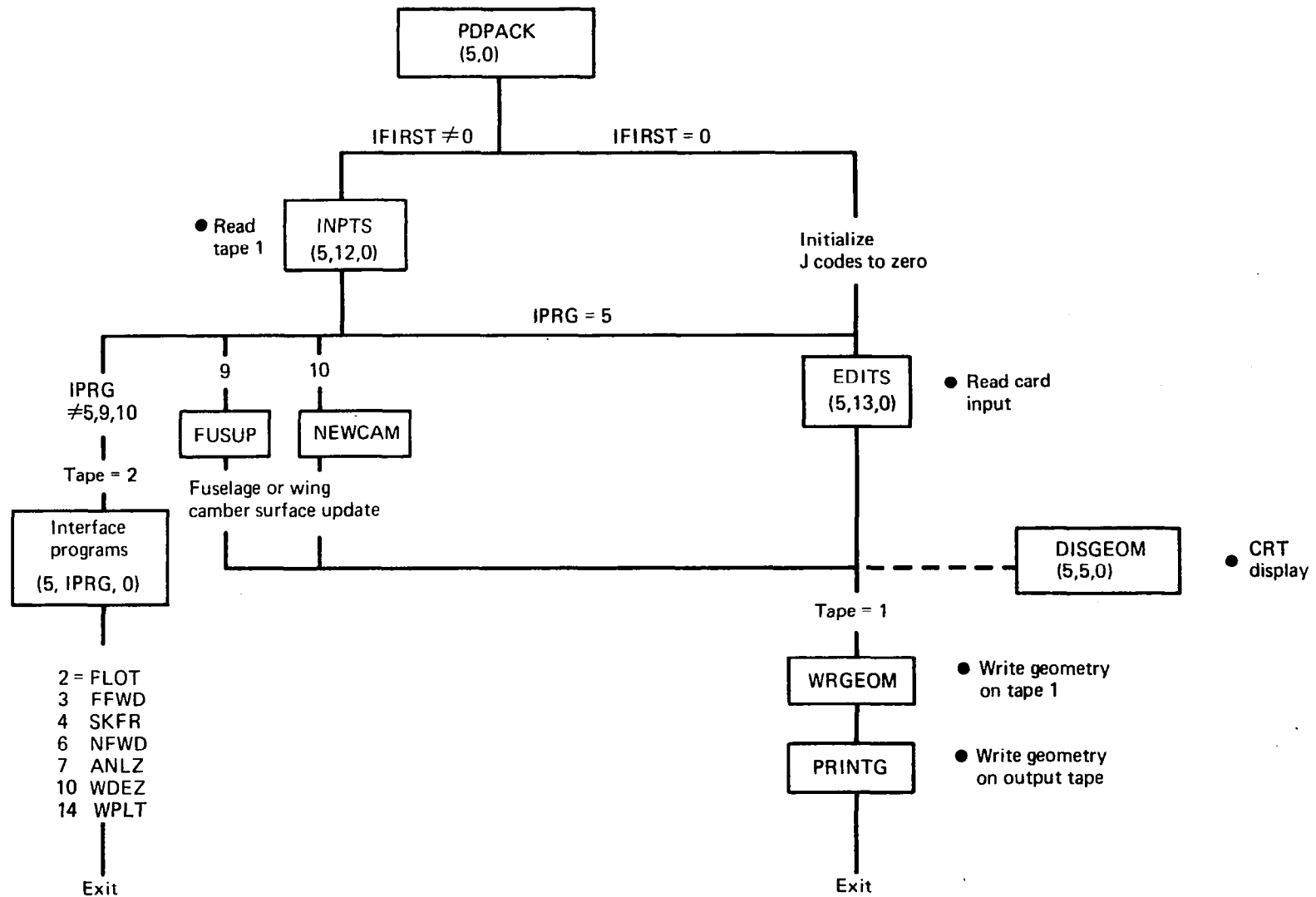


FIGURE 2.2-2.—PROGRAM PDPACK SCHEMATIC

USE: CALL OVERLAY (GEOM, 5, 0, 0)  
INPUT: Executive card variables listed above.  
SUBROUTINES CALLED: See schematic on page 10.

#### Subroutine WRGEOM

PURPOSE: To write geometry data onto TAPE1 for storage, or onto TAPE2 for plot program or far-field wave drag program.

METHOD: Subroutine WRGEOM uses the input format of the NASA-LRC plot program and is used to write the basic geometry data onto TAPE1 when the geometry module leaves core, or to write the geometry data onto the interface TAPE2 as part of the plot or far-field wave drag program interfaces.

USE: CALL WRGEOM

INPUT: Configuration geometry (see User's Manual)

SUBROUTINES CALLED: None

#### Subroutine ZPOD

PURPOSE: To calculate the Z distance between the nacelle centerline and the local wing camber surface.

METHOD: The basic configuration geometry input (read in EDITS) allows the nacelles to be input with either of two Z dimensions: in the Z system of the configuration coordinates, or with Z measured to the local wing camberline. Subroutine ZPOD is used, regardless of which Z definition is input, to calculate the other definition and store it in the basic geometry.

If the nacelle origin is forward or aft of the wing planform, the Z distance is measured from the wing leading edge or trailing edge (whichever is closer) at the same Y station.

As a special case, ZPOD is also used to compute the distance between the fuselage centerline and the wing camber line at the side of the fuselage (in program GEOM916).



USE: CALL ZPOD(NN)

INPUTS: NN Nacelle origin index  
PODORG Nacelle origin data  
XAF,  
WAFORG, Wing definition (planform,  
WAFORD, thickness, camberline)  
TZORD

SUBROUTINES CALLED: None

#### Subroutine PRINTG

PURPOSE: To write configuration geometry onto output file (6).

METHOD: After configuration geometry is read or changed, subroutine PRINTG is used to write the current geometry definition. In the case where the fuselage or wing camber surface is updated (executive cards FSUP or WGUP), only the fuselage or camber surface is output. This is controlled by variable ISKIP1 (=98 for fuselage only, =99 for camber surface only).

USE: CALL PRINTG

INPUT: Geometry definition (see User's Manual)  
ISKIP1

#### Subroutine NEWCAM

PURPOSE: To interpolate a wing camber surface for basic geometry definition (TZORD) from wing design or analysis definition (WZORD)

METHOD: The camber surface definition generated or used by the wing design or analysis modules, called WZORD, may be different from basic geometry definition (TZORD). This can happen either because the definition is being created by the design program, or because the analysis program input for WZORD was used. NEWCAM linearly interpolates for TZORD from WZORD, and is called by program PDPACK if executive card WGUP is read. NEWCAM is also automatically called by the analysis program interface if the WZORD option is used.

USE: CALL NEWCAM (FACTOR)

INPUT:                    FACTOR      Multiplier used to scale camber surface ordinates, if desired.

                          NOPCT,  
                          P,  
                          JBYMAX,    Camber surface definition WZORD  
                          Y,           contained in common block /CAMBER/  
                          WZORD,  
                          IFZC

                          XAF,        Camber surface definition (TZORD)  
                          WAFORG,   of basic geometry contained in  
                          TZORD      common block /WING/

SUBROUTINES CALLED:    INTERP

#### Subroutine INTERP

PURPOSE:                To interpolate two-dimensional array.

METHOD:               INTERP is used to linearly interpolate WZORD definition (used in conjunction with subroutine NEWCAM).

USE:                     CALL INTERP (A, O, N, X, Y, M)

INPUT:                  A            First array location for abscissa values  
                          O            First array location for ordinate values  
                          N            Number of values in A and O arrays  
                          X            Array of abscissa for ordinate outputs  
                          Y            Array of calculated ordinates  
                          M            Number of values in X and Y arrays output

SUBROUTINES CALLED:    None

#### Program GEOMPLT

PURPOSE:                To write input tape for PLOT module.

METHOD:               GEOMPLT is the interface program between the executive and the PLOT module, entered when the executive card PLOT is read. The interface reads the plot title card and configuration codes, then uses WRGEOM to write the corresponding basic geometry data onto tape 2 (the program input tape). GEOMPLT then reads the plot view cards and writes them onto tape 2.

USE:                     CALL OVERLAY (GEOM, 5, 2, 0)

INPUT: See User's Manual for input description  
SUBROUTINES CALLED: WRGEOM

#### Program GEOM80

PURPOSE: To write input tape for far-field wave drag module.  
METHOD: GEOM80 is the interface program between the executive and the far-field wave drag program, entered when the executive card FFWD is read. The interface reads a title card and the configuration codes, then uses WRGEOM to write the corresponding basic geometry data onto TAPE2. GEOM80 then reads the case and restraint cards (if used) and writes them onto TAPE2.  
USE: CALL OVERLAY (GEOM, 5, 3, 0)  
INPUT: See User's Manual for input description  
SUBROUTINES CALLED: WRGEOM

#### Program GEOM158

PURPOSE: To write input tape for skin friction module.  
METHOD: GEOM158 is the interface program between the executive and the skin friction drag module, entered when the executive card SKFR is read. It reads information, flight conditions, and configuration data, and structures those inputs together with basic geometry to write the input tape (2) for the skin friction module.  
USE: CALL OVERLAY (GEOM, 5, 4, 0)  
INPUT: See User's Manual for input description  
SUBROUTINES CALLED: WRGEOM

#### Program GEOM916

PURPOSE: To write input tape for near-field wave drag module.

**METHOD:** GEOM916 is the interface program between the executive and the near-field wave drag module, entered when the executive card NFWD is read. It reads title information, Mach number, etc., and structures those inputs together with basic geometry to write the input tape (2) for the near-field wave drag module.

The near-field program considers the configuration to be uncambered; the wing and fuselage have thickness but have a flat mean-line. Wing height in the side of the fuselage is preserved, however, being the distance from the fuselage centerline to the wing at the side of the fuselage. In GEOM916, the wing height dimensions are computed by a special use of ZPOD, in which the fuselage centerline is treated as a nacelle origin in a series of calculations.

The nacelle Z dimension used in the near-field program is the distance from the local wing camberline.

**USE:** CALL OVERLAY (GEOM, 5, 6, 0)

**INPUT:** See User's Manual for input description

**SUBROUTINES CALLED:** ZPOD, NEWAREA

#### Subroutine NEWAREA

**PURPOSE:** To check for and remove "steps" in input fuselage area definition corresponding to inlet or exit stream tubes.

**METHOD:** The basic geometry fuselage definition allows for input of the fuselage in four segments. If the first cross section of segment 2 is input at the same X as the last cross-section of segment 1, and the cross-sectional areas of the two inputs are different, then the far-field wave drag program extends a streamtube to account for the area "step", so that no area discontinuity occurs in the wave drag calculations. This can occur, also, between other segments. The near-field wave drag fuselage calculations cannot accommodate an area step at a fuselage station other than the first or last. If one occurs, subroutine NEWAREA removes the step by collapsing the fuselage to a solid body having the same area growth.

NEWAREA also reduces the fuselage area definition to 50 values in X, Z and area if more than 50 total values were input in all the fuselage segments, since the near-field program allows only 50 points.

USE: CALL NEWAREA (X, Z, A, L)

INPUT: X Output array of fuselage X values for analysis program.  
Z Output array of fuselage camberline Z values.  
A Output array of fuselage cross-sectional areas.  
L Number of values in X, Z, or A arrays  
/BODY/ Common block containing fuselage basic geometry definition.

SUBROUTINES CALLED: None

#### PROGRAM GEOM201

PURPOSE: To write input tape for lift analysis module.

METHOD: GEOM201 is the interface program between the executive and the lift analysis module, entered when the executive card ANLZ is read. It reads title information, Mach number, etc., and structures those inputs together with basic geometry to write the input tape (2) for the lift analysis module.

The lift analysis interface allows the wing camber surface to be read as the WZORD definition, or passed in through common block /CAMBER/, in addition to the basic geometry definition. If WZORD is used, the basic geometry is automatically updated by means of subroutines NEWCAM and WRGEOM.

If the fuselage definition in the basic geometry consists of more than 50 X stations, and the circular cross-section slender body solution is selected, program NEWAREA is called to reduce the definition to 50 X stations.

If the arbitrary cross section fuselage solution is selected, subroutine INBONN is called to set up the necessary additional input.

The nacelle origin Z dimension is the vertical distance to the local wing camber line.

USE: CALL OVERLAY (GEOM, 5, 7, 0)

INPUT: See User's Manual for input description

SUBROUTINES CALLED: NEWAREA, NEWCAM, WRGEOM, INBONN

### Subroutine INBONN

**PURPOSE:** To write input tapes for arbitrary fuselage solution in lift analysis module.

**METHOD:** INBONN is the interface program between the basic geometry and the arbitrary fuselage program (GSBTP) of the lift analysis program. Because of the large data files required to describe the arbitrary fuselage shape, these data are transferred by means of tape NT13, written in INBONN according to the GSBTP format. GSBTP then reads NT13 in subroutine DECRD.

Output of GSBTP includes pressure data used in calculating fuselage force coefficients in lift analysis program FUFOCO. The fuselage geometry needed in FUFOCO is also written in INBONN (on tape NT15).

INBONN reads one card of input data consisting of print codes and discontinuity codes.

**USE:** CALL INBONN

**INPUT:** See User's Manual for input description

**SUBROUTINE CALLED:** None

### Program GEOM253

**PURPOSE:** To write input tape for wing design module.

**METHOD:** GEOM253 is the interface program between the executive and the wing design module, entered when the executive card WDEZ is read. It reads title information, Mach number, loadings data, etc., and structures those inputs together with basic geometry to write the input tape (2) for the wing design module.

The wing design program may employ pressure fields generated by the near-field wave drag module or analysis module. The existence of these pressure fields is tested in the corresponding common blocks. The pressure fields may alternatively be input from cards. This involves the codes BODCPX, BODUPX, CPNACX and TXCPT. The actual use of these pressure fields is controlled by input of the corresponding loading numbers.

The nacelle Z origin dimension is the vertical dimension to the local wing camber surface.

USE: CALL OVERLAY (GEOM, 5, 8, 0)  
INPUT: See User's Manual for input description  
SUBROUTINES CALLED: RDWRT, RDWRTE

#### Subroutine KULCON

PURPOSE: To define a set of wing upper surface pressure level constraints.

METHOD: KULCON applies the wing upper surface pressure coefficient constraints described in reference 5, if requested by input option (AXCPLIM = -.)

The constraints consist of:

- The pressure coefficient corresponding to specified fraction of the vacuum pressure coefficient.
- The inboard shock pressure coefficient, which is a function of wing leading edge sweepback angle, Mach number, and local side-of-body expansion angle. The inboard shock pressure limit is imposed on a region bounded by the inboard wing edge (defined by input YSOB), and input values of percent root chord (XRPC) and percent semispan (YVPC).
- Trailing edge shock pressure coefficient.

The program determines which of these constraints is limiting for the different planform regions and creates an input array of pressure coefficient constraints. This array is then written on the wing design program interface tape (TAPE2).

USE Call KULCON (NWF)

INPUT: See User's Manual for required input.  
(One card of input is read in KULCON.)  
Other input, provided by GEOM253, is:

NWF Number of wing airfoils in basic geometry definition  
YSOB Side of fuselage Y-value  
XM Mach number  
/WING/ Wing planform geometry contained in common block

SUBROUTINES CALLED: None

Subroutine RDWRT, RDWRTE

PURPOSE: To read data input cards and write the data on the interface file (2) in the format specified.

METHOD: If subroutine RDWRT is called, data is read using FORMAT(10F7.0) and written using FORMAT(10F10.4). If subroutine RDWRTE is called, data is read and written using FORMAT(4E20.13).

USE: CALL RDWRT(NUM)  
CALL RDWRTE(NUM)

INPUT: NUM Number of data values to transmit.

SUBROUTINES CALLED None

Program FUSUPD

PURPOSE: To update the fuselage definition in the basic geometry to the optimum area distribution generated by the far-field wave drag program.

METHOD: The far-field wave drag program contains a fuselage optimization feature, which area-rules the fuselage subject to input constraints. FUSUPD uses the optimized definition to update the basic fuselage geometry, and is accessed by means of the executive card FSUP.

FSUP first reads the value of OPHOW, which controls the optimization interpolation. (OPHOW = -, interpolate at original fuselage X stations; OPHOW = +, interpolate at 50 equally spaced X stations). It then changes the basic geometry definition to the optimum body area distribution, contained in common block /OPBOD/. The original fuselage Z definition is preserved. Fuselage perimeters are proportioned to the new area distribution.

USE: CALL OVERLAY (GEOM, 5,9,0)

INPUT: OPHOW Interpolation code  
XCP Optimum fuselage definition.  
AOP XOP = X array, AOP = area array,  
JOP JOP = number of XOP or AOP values.

SUBROUTINES CALLED: TBLU1



### Program INPTS

PURPOSE: To read basic geometry data from tape into core.

METHOD: Program INPTS is used to reread the configuration basic geometry back into core when the geometry module is accessed. INPTS uses the same format as program WRGEOM, which was used to store the basic geometry on tape 1.

USE: CALL OVERLAY (GEOM, 5, 10, 0)

INPUT: Tape 1

SUBROUTINES CALLED: None

### Program EDITS

PURPOSE: To read configuration geometry from cards.

METHOD: Program EDITS is used to read the configuration geometry from cards, and is accessed by either the GEOM NEW or GEOM executive cards. (GEOM NEW zeroes all the configuration J1, J2, etc., codes, so that EDITS reads all new data; GEOM preserves all existing codes, so that new geometry reads replaces or adds to existing geometry read by INPTS).

The input format of program EDITS is basically that of the NASA-LRC plot program, with a few additional input variables added as noted in the User's Manual.

USE: CALL OVERLAY (GEOM 5, 11, 0)

INPUT: See User's Manual for input description

SUBROUTINES CALLED: ZPOD

### Program GOPLOT

PURPOSE: To write input tape for wing pressure summary program.

METHOD: GOPLOT is the interface program between the executive and the wing pressure summary program. It reads title information, component selection, and  $C_L$  or angle of attack values. It structures those inputs together with planform data from the basic geometry to write the input tape (TAPE2) for the wing pressure summary program.

USE: CALL OVERLAY (GEOM, 5, 10, 0)  
INPUT See User's Manual for input description  
SUBROUTINES CALLED: None

## 2.3 SKIN FRICTION MODULE

The skin friction module is primary overlay 4. Its principal subprograms calculate the wetted areas of the configuration, and then the skin friction drag for a series of input flight conditions. A schematic of the skin friction module is shown in figure 2.3-1.

### Program TEA-158A

**PURPOSE:** To read configuration data, flight conditions, and calculate wetted areas and lengths to be used in skin friction drag calculations.

**METHOD:** Program first reads all input data, which consist of configuration geometry and either Mach number-altitude or Mach number-Reynolds number flight conditions.

For each configuration component, the corresponding wetted areas and reference lengths are computed. In the case of the wing or canard(s) or fin(s), the parts are broken into strips to permit more accuracy in determining an average skin friction coefficient. (The wing is broken into approximately 50 strips, canard or fin into 10 strips.)

The wetted areas and reference lengths are passed to subroutine DRAG for the skin friction coefficient calculations.

**USE:** CALL OVERLAY (SKFR, 4, 0)

**INPUT:** Input is read from the interface tape (2), set up by the skin friction interface program in the geometry module.

**SUBROUTINES CALLED:** DRAG

### Subroutine DRAG

**PURPOSE:** To calculate configuration skin friction coefficients and print answers for all input flight conditions.

**METHOD:** Given the set of configuration wetted areas and input flight conditions, the skin friction coefficients for each component are computed and summed to obtain the total skin friction drag. If the graphics routines are activated, the friction drag coefficients are also printed on the CRT.

**USE:** CALL DRAG

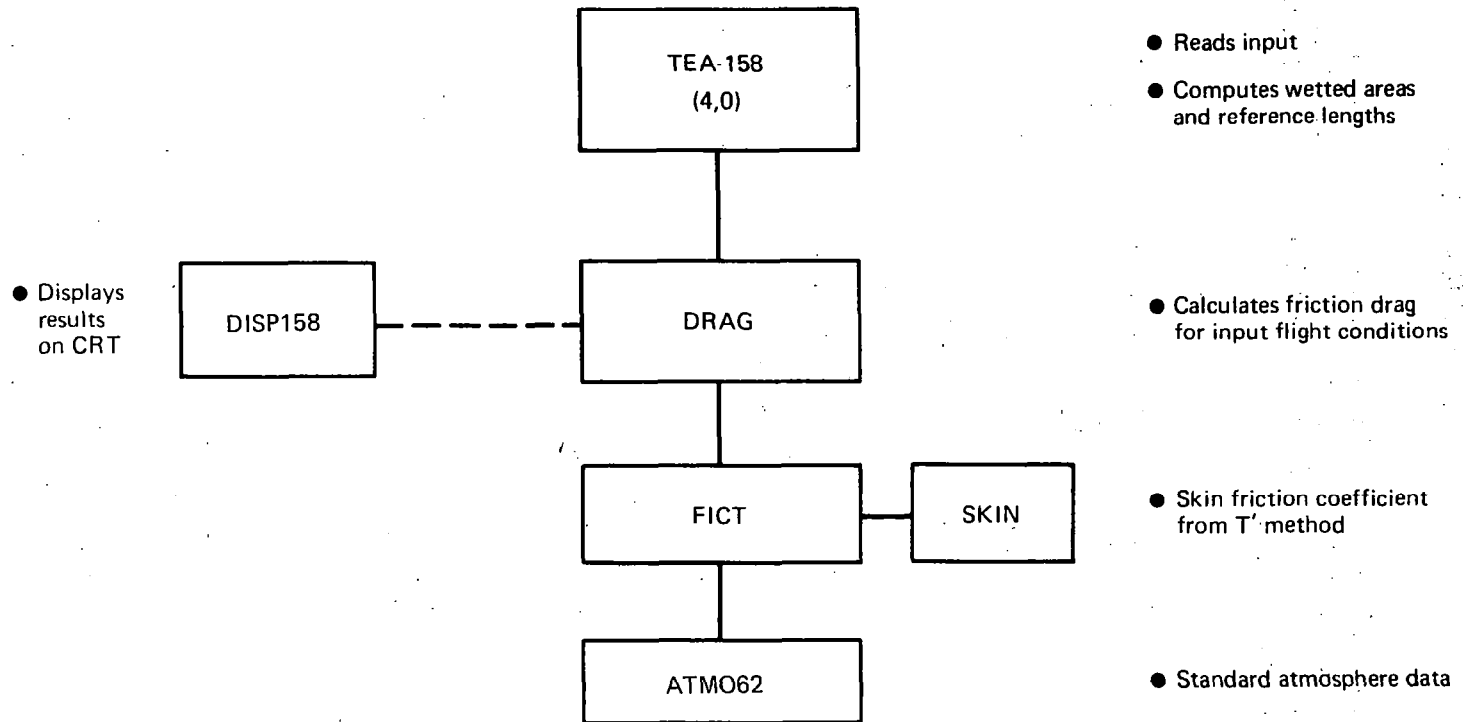


FIGURE 2.3-1.—SKIN FRICTION MODULE SCHEMATIC

INPUT: Input is passed in common blocks from program TEA-158A

PRINCIPAL VARIABLES: Same as program TEA-158A, plus:

SCAM	Scale factor to convert configuration reference lengths to feet for use in subroutine FICT
SREF	Wing reference area
SWETT	Total configuration wetted area
CDFT	Total skin friction drag coefficient
AM	Mach number - altitude flight condition input. AM = Mach number,
AL	AL = altitude (feet),
DELT	DELT = temperature deviation from standard (0°F),
SCAMOD	SCAMOD = input scale factor
AM	Mach number - Reynolds number condition input
RNPFL	RNPFL = Reynolds number per foot/1,000,000
TOTEM	TOTEM = total temperature (°Rankine)
SWETRB	Fuselage wetted area
FUSL	Fuselage reference length
SWETB	Fuselage wetted area corrected for overlap areas of wing, fin(s), and canard(s)
AREAJ	Planform area of a wing strip
WINGL	Length of wing strip
LCOUNT	Total number of wing strips (nominally 50)
SWETW	Total wing wetted area
TSWTNA	Wetted area of nacelle(s) at each input origin
TPODL	Corresponding length
SWETNA	Total wetted area for all nacelles
NPOD	Number of nacelle origins
SWTFN	Planform area of a fin strip (10 total strips)
CHDFN	Corresponding strip length
NFIN	Number of fins
TSWTC	Planform area of canard strip
TCCAN	Corresponding strip length
NCAN	Number of canards
SWETXP	Wetted area of an arbitrary configuration part
RLXP	Corresponding reference length
NXTPT	Number of arbitrary parts

OUTPUT: Output consists of flight conditions, wetted area and skin friction coefficient buildups, total skin friction drag coefficient and configuration wetted area.

SUBROUTINES CALLED: FICT, DISP158

#### Subroutine FICT

PURPOSE: To calculate the turbulent skin friction drag coefficient for a given reference length, Mach number, Reynolds number, and total temperature.

METHOD: The skin friction coefficient is calculated from the T' method described in the General Description and Theoretical Development document (Part 1).

USE: CALL FICT (AMX, ALX, EEL, C)

INPUT: AMX Mach number  
ALX Altitude, feet  
EEL Reference length

PRINCIPAL VARIABLES: TI Total temperature, degrees Rankine  
SCAM Scale factor to convert input reference length to feet  
RI Free stream Reynolds number

OUTPUT: C Skin friction coefficient

SUBROUTINES CALLED: ATM062, SKIN

#### Subroutine ATM062

PURPOSE: To provide standard atmospheric data

METHOD: Program uses 1962 standard altitude definition (reference 3).

USE: CALL ATM062 (Z, TEMP, SIGMA, AX)

INPUT: Z Geometric altitude, feet

OUTPUT: TEMP Temperature, degrees Celsius  
SIGMA Density ratio  
AX Speed of sound, knots

SUBROUTINES None

### Subroutine SKIN

PURPOSE: To iterate for skin friction coefficient.

METHOD: Program is used to solve the Karman-Schoenherr equation using  $\frac{.242}{\sqrt{CF}} = \log_{10} (CF * REY)$  value for CF. Solution is iterative, and is satisfied when successive iterations agree within .0001 percent. A maximum of 50 iterations is allowed.

USE: CALL SKIN (REY, CF)

INPUT: REY Reynolds number

OUTPUT: CF Skin friction coefficient

SUBROUTINES CALLED: None

ERROR RETURN: Program uses 50th iteration for CF if convergence does not occur, and prints error message.

## 2.4 NEAR-FIELD WAVE DRAG MODULE

The near-field wave drag module is primary overlay 6. It contains principal subprograms to calculate the near-field pressure data and drag coefficients and to display the calculated results. Schematics of the principal program structure are given in figures 2.4-1, 2.4-2, and 2.4-3.

### Program TEA-356

**PURPOSE:** Near-field wave drag primary overlay

**METHOD:** Program TEA-356 is the primary level of the near-field wave drag program. It calls the input overlay and contains the Mach number loop which calls the calculation overlays and the graphics display (overlay 3).

**USE:** CALL OVERLAY (NFWD, 6, 0, 0)

**INPUT:** Executive card NFWD

**SUBROUTINES CALLED:** Overlays 6,1 to 6,6 and primary level subroutines

### Subroutine NBODY

**PURPOSE:** To calculate the Whitham  $F(y)$  function for an arbitrary body of revolution, then compute surface pressure distribution, wave drag, and wetted area.

**METHOD:** Subroutine NBODY first computes the Whitham  $F(y)$  function, according to the Stieltjes integral formulation. The equations used are summarized in the Theoretical Development document (Part 1). The  $F(y)$  function is computed at  $TNCUT+1$  X-stations (where TNCUT is an input in the main program, usually 50). To remove minor irregularities in the final  $F(y)$  function, extra points are inserted between each of the X-stations,  $F(y)$  is computed there also, and a five point smoothing formula applied.

The  $F(y)$  function is also computed at X-stations downstream of the last body station, to define the "tail" on the  $F(y)$  function which is needed in the area-balancing technique for pressure coefficient. The loop for the  $F(y)$  equations begins at statement 60, which results in the unsmoothed  $F(y)$  array stored in TFY, with corresponding y values in BT0, JFY total values. After smoothing and extending the  $F(y)$  function aft of the body, the final  $F(y)$  function is stored in TFTAU, with corresponding y values in TTAU, JST0 total values.



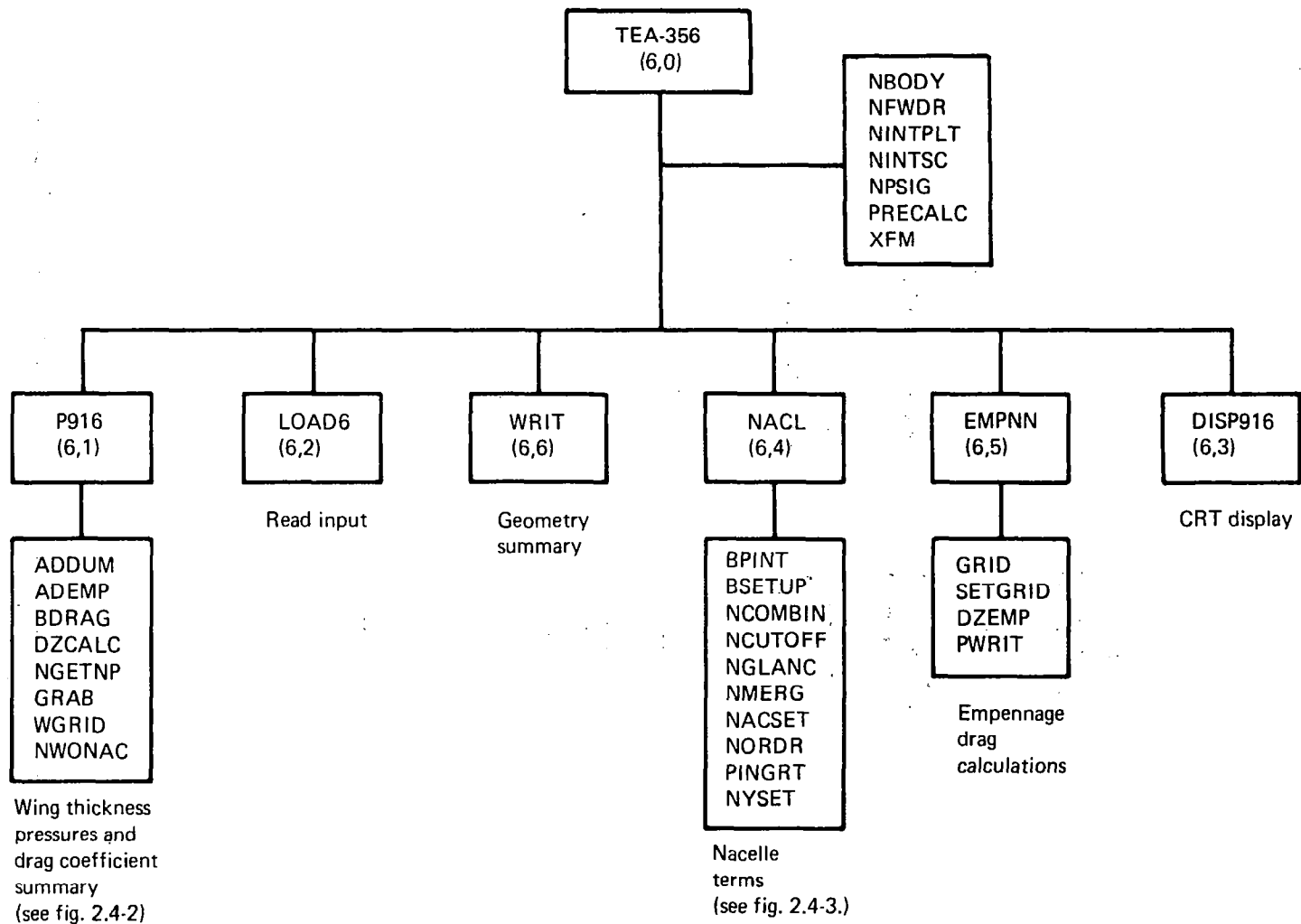
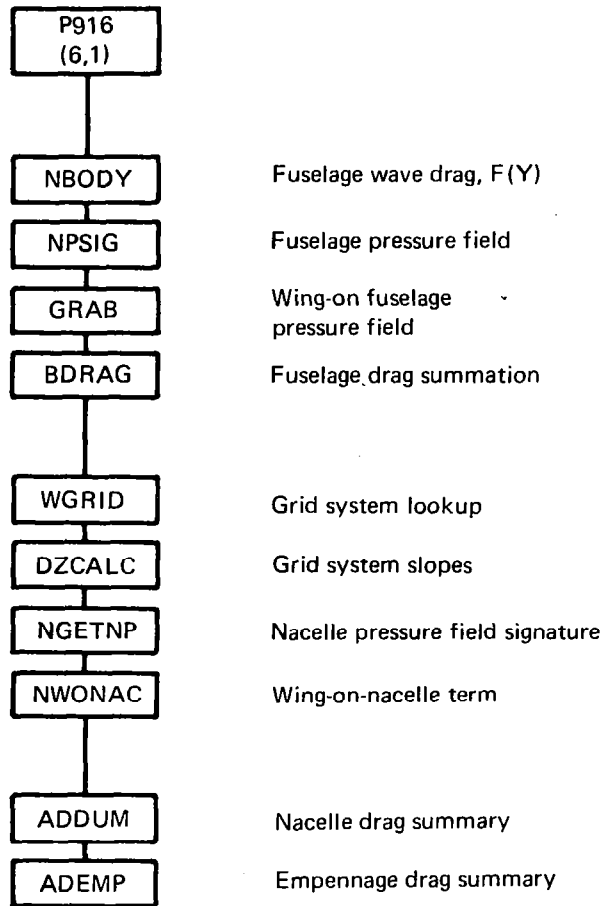


FIGURE 2.4-1.—NEAR-FIELD WAVE DRAG MODULE SCHEMATIC



**FIGURE 2.4-2.—WING THICKNESS PRESSURES AND DRAG SUMMARY SCHEMATIC**

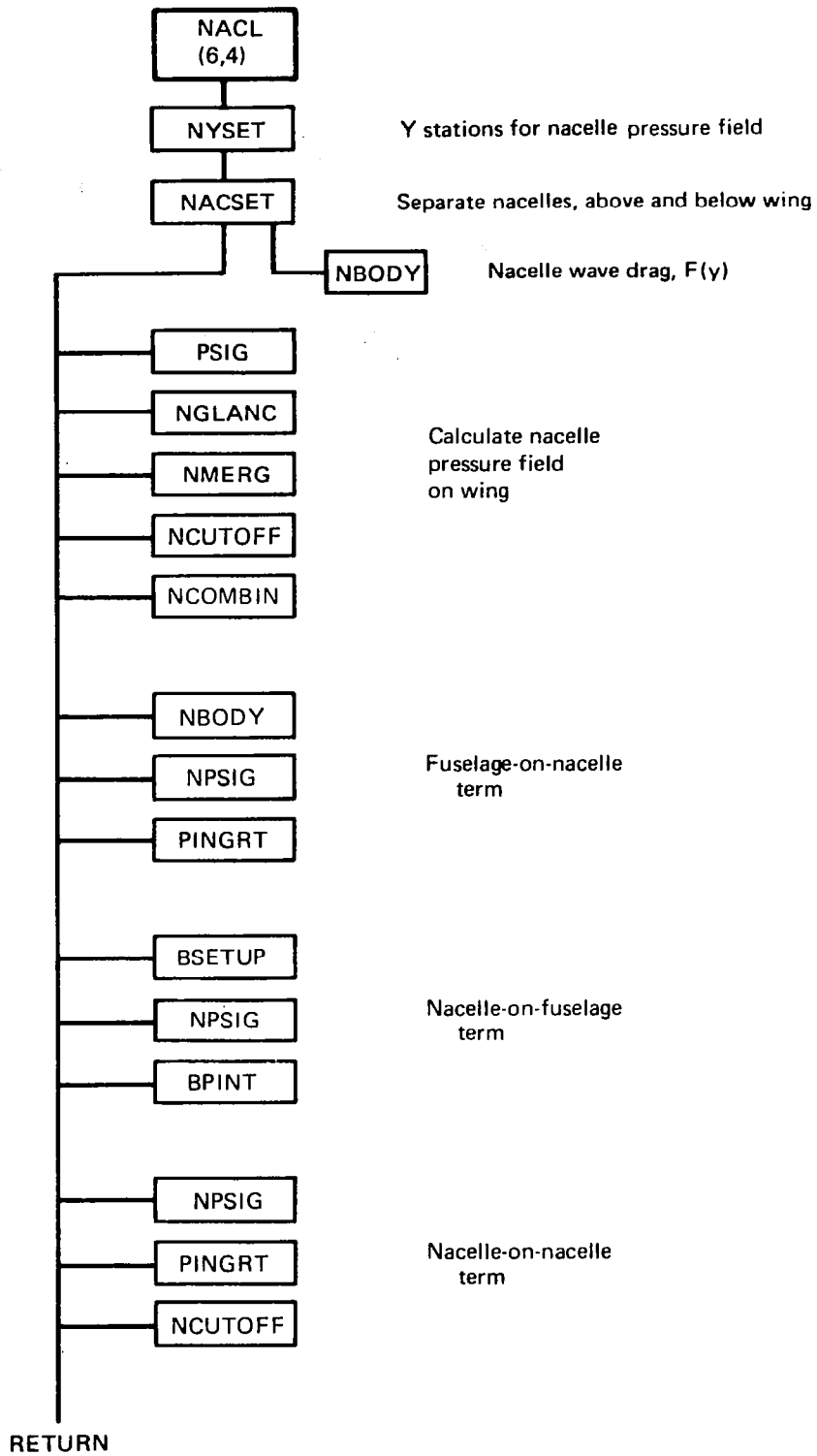


FIGURE 2.4-3.—NACELLE TERMS SCHEMATIC

The body surface pressure calculations loop starts at DO 330, using the equations given in the Theoretical Development document (Part 1). The body is again broken into TNCUT+1 segments, and the resulting thickness pressures stored in TCPBY, with corresponding X values in TXCPBY. The wetted area calculation and the integration of the thickness pressures to get wave drag is performed in loop DO 340.

Subroutine NBODY will handle bodies having open front or aft ends, but assumes smooth geometry in-between.

USE: CALL NBODY (TXB, TRB, TNXB, TNCUT, TTAU, TFTAU, JSTP, WAVE, SNWET)

INPUT: TXB Body definition. TXB = x array  
 TRB TRB = radii array  
 TNXB TNXB values in X or radius  
 TNCUT Number of body segments in F(y) and thickness pressure calculations  
 TTAU F(y) function  
 TTAU = y  
 TFTAU TFTAU = F(y)  
 JSTN JSTN values in y or F(y)  
 WAVE  $\int C_p dA$ , wave drag/q  
 SNWET Wetted area of body, assuming circular cross-sections

SUBROUTINES CALLED: TBLU1

#### Subroutine NFWDR

PURPOSE: To calculate influence coefficient function for wing thickness pressure calculations.

METHOD: NFWDR calculates R function for a selected grid element according to equation given in Theoretical Development document (Part 1).

USE: CALL NFWDR (NS1, DELTN1, DELTN2, AN1)

INPUT: NS1 X distance from field point element  
 DELTN1 lateral distances from field point  
 DELTN2 element,  $\beta y \pm .5$   
 AN1 R function

SUBROUTINES CALLED: None

### Subroutine NINTPLT

**PURPOSE:** To generate a detailed definition of the tilted  $F(y)$  function for a selected right-running leg.

**METHOD:** Subroutine NPSIG identifies all right-running legs of the tilted  $F(y)$  function. NINTPLT is used to enrich the definition for use in later interpolations. The selected leg may either be a "base" leg, or a leg that possibly contains an area-balancing solution. The maximum number of points used to enrich the leg definition is 300. The enriched definitions end up in the following arrays:

	Base leg	Other leg
Tilted $F(y)$	BT	CTP
$F(y)$	BFTAU	CFTAU
Integrated area under tilted $F(y)$	BAREA	CAREA

**USE:** CALL NINTPLT (SUM, TPRES, FPRES, NL, NR, NSET, TFTAUS)

**INPUT:** SUM Area under tilted  $F(y)$  function corresponding to left end of leg  
TPRES,FPRES Value of tilted  $Y$ , ( $F(y)$  at left end of leg  
NL, NR Storage index of tilted  $F(y)$  array (arrays TTO = tilted  $y$ , TFTAUS =  $F(y)$ )  
NSET Index for leg definition  
1 = base leg  
2 = succeeding leg  
TFTAUS  $F(y)$  array

**SUBROUTINES CALLED:** None

### Subroutine NINTSC

**PURPOSE:** To locate the wing-fuselage intersection and compute corresponding exposed wing wetted area.

**METHOD:** The wing-fuselage intersection code is controlled by input ANYBOD. If positive, ANYBOD defines the inboard end of the wing for purposes of the thickness definition, whether a fuselage is present or not. If ANYBOD is negative, (and not equal to -10.), the intersection of the wing and fuselage is calculated by solving for the point at which each constant percent chord meanline of the wing crosses through the fuselage

surface (assuming the fuselage to be circular). If ANYBOD is -10., the intersection is read from cards. If there is no fuselage, input ANYBOD is used to define the inboard end of the wing.

The wing-fuselage intersection is stored in common block /WBINT/.

WX X location of intersection  
WY,WZ,WT Corresponding Y,Z, and thickness values

USE: CALL NINTSC (WSW)

INPUT: WSW Exposed wing wetted area

SUBROUTINES CALLED: TBLUI

#### Subroutine NPSIG

PURPOSE: To calculate the near-field pressure signature for a body of revolution at a given distance from the body.

METHOD: Given an  $F(y)$  function, Mach number, and radial distance from the body, NPSIG is used to calculate the resultant pressure signature. The method is described in the Theoretical Development document (Part 1).

The basic steps in the calculation sequence are as follows:

1. The tilted  $F(y)$  function is constructed from the input  $F(y)$  function, and the running sum of area under the tilted  $F(y)$  function computed. (The input function is defined by arrays TTAU, TFTAUI and the tilted function by TTP, TFTAUI, with the area corresponding to TTO in TAREA).
2. The bow shock position is identified by the left-most value of TTO for which TAREA = 0. (Interpolation of the TAREA array is used for accuracy.)
3. The tilted  $F(y)$  function remaining after the bow shock is located is searched to identify all right-running legs.

4. All right-running legs are compared for common TAREA values, which would identify possible shock wave locations. (Again, interpolation is used to enrich the TAREA definition, using subroutine NINTPLT.)
5. Valid shock wave solutions are identified, based on the left-most criteria described in the theory document.
6. The resulting tilted and area-balanced  $F(y)$  function is converted to pressure coefficient by means of the multiplier CONST and stored in arrays BTO and CTO ( $x$  and pressure coefficient). The BTO and CTO arrays are cut off if  $x$  becomes greater than input value YED.

USE: CALL NPSIG (TTAU, TFTAU, JSTO, R, YED)

INPUT: TTAU  $F(y)$  definition,  $Y =$  TTAU array,  
 TFTAU  $F(y) =$  TFTAU array, JSTO values  
 JSTO  
 R Radial distance from body centerline  
 YED Largest  $x$ -value of interest for pressure signature

SUBROUTINES CALLED: NINTPLT, TBLU1

#### Subroutine XFM

PURPOSE: To convert input planform geometry to program grid system.

METHOD: The wing planform is represented in the near-field wave drag program as a set of rectilinear elements, described in the Theoretical Development document (Part 1). Given the number of semispan rows (TNON) used to define the right-hand wing, XFM interpolates the planform definition at the mid-point of each semispan row for the leading edge and trailing edge  $x$  value. These  $x$  values are converted to program scale (by means of  $RATIO = Y_{wing-tip} * BETA/TNON$ ) and stored in arrays TXLE and TXTE, with XLEO and XTEO defining the wing centerline grid points.

Storage of wing pressure coefficients and surface slopes uses a space-conserving technique: The leading edge of a spanwise element row is stored immediately

after the trailing edge of the adjacent inboard row. The index array for the row storage is JZ, which totals the number of elements stored up to the leading edge of a selected row. The allowable total number of elements representing the right hand wing is 2750; if this total is exceeded for a given value of TNON, the program reduces TNON until the 2750 limit is not exceeded.

USE: CALL XFM  
INPUT: Input geometry in common blocks  
SUBROUTINES CALLED: TBLU1

#### Subroutine PRECALC

PURPOSE: To precalculate a standard set of  $\bar{R}$  values for thickness pressure calculations.  
METHOD: PRECALC sets up an array of  $\bar{R}$  values for grid elements up to 20 units forward or laterally from any field point element (to save time in recalculating often-used values). The resulting array is stored in common block /RSAVE/.  
USE: CALL PRECALC  
INPUT: None  
SUBROUTINES CALLED: NFWDR

#### Program P916

PURPOSE: To perform thickness pressure calculations in near-field wave drag module.  
METHOD: Program P916 is the main program of the near-field wave drag module. It solves for the thickness pressure distribution on the surface of an arbitrary wing-fuselage-nacelle configuration, and integrates the pressures over the surface to obtain wave drag.  
  
The equations used in the thickness pressure solution are given in the Theoretical Development document (Part 1). A consistent nomenclature is used, as possible, between the theory equations and the FORTRAN variable names.



The principal program logic is as follows:

- 1) Calculate fuselage pressure field acting on wing. This is done for each selected semi-span station (TYB2) in loop DO 130. The resultant fuselage pressure field is stored in PBWG, which is printed in loop DO 150.
- 2) Calculate wing thickness pressure field. This is done for the selected semispan stations in loop DO 830. The semispan element row is NSTAR and the associated x elements are LSTAR. For each NSTAR and LSTAR, the upstream region of integration contains elements located at N and LVAR. The local wing slopes are DZDX, contained in array TZC. The loop DO 450 performs the influence function times slope calculation described in the theory document. The velocity potential (PHI) is then calculated, and differenced to get pressure coefficient (CP). After all pressure coefficients are calculated at a given semispan station, they are smoothed in loop 710, resulting in CPAVG. Calculation of the drag terms (pressure times wing slope) employs these variables names:

DBWG	fuselage pressure acting on wing
DAVG	wing thickness pressure
DNAC	nacelle pressure acting on wing.

- 3) Interpolate wing thickness pressures for output. This is done at the selected semispan stations in loop DO 770. The wing thickness pressures are then output in loop DO 840. At the same time, the common block containing the wing thickness pressures, /PLIM/, is completed to make it self-sufficient for use in other modules, where:

FYB2	percent semispan array, MYFR values
TNMP	percent chord array, NMPC values
VAR (X,Y)	thickness pressure array

The wing thickness pressure plus fuselage pressure field is then summed and output in loop DO 860.

- 4) Integrate drag terms spanwise to get total wing drag. This is done in loop DO 900.
- 5) Calculate wing thickness pressure on nacelle volume term (subroutine NWONAC.)

- 6) Calculate fuselage pressure drag plus wing thickness pressure on fuselage drag terms. This is done in subroutine BDRAG and results in drag terms DBD and DWOB, respectively.
- 7) Convert drag terms to coefficient form, output wing section drag coefficients, nacelle drag coefficients, and final drag summary. This is done starting at loop DO 920, using the following nomenclature:

YB2	semispan fraction
CHORD	local wing chord
CAS	wing section drag coefficient
BEF	section drag of fuselage on wing
CNACS	section drag of nacelle on wing
CINT	sum of CAS, BEF, CNACS
DFR	fraction of total wing drag occurring at YB2
CDAVG	wing thickness drag coefficient
CDB	fuselage thickness drag coefficient
CDBOW	interference drag coefficient of fuselage on wing
CDWOB	interference drag coefficient of nacelle on wing
CDTOT	total drag coefficient

The nacelle drag coefficient summary is printed in subroutine ADDUM. Empennage drags are printed in subroutine ADEMP.

USE: CALL OVERLAY (NFWD, 6, 1, 6HRECALL)

INPUT: MK Mach number index variable (from overlay 6, 0).  
Configuration data from overlay 6, 2.

SUBROUTINES CALLED: See schematic, figure 2.4-2.

#### Subroutine ADDUM

PURPOSE: To sum nacelle drag terms, convert them to coefficient form (based on wing reference area) and write them onto the output file.

METHOD: Program NACL generates all nacelle thickness drag terms except for the wing on nacelle and nacelle on wing terms. These are saved in common block /NDRAG/ and printed by ADDUM when the main program (P916) writes the final drag summary. The drag coefficient nomenclature is as follows:

TNISOL isolated nacelle wave drag coefficient  
TFBON interference drag coefficient of fuselage on nacelles  
TFNOB interference drag coefficient of nacelle on fuselage  
TNNON interference drag of other nacelles on nacelle  
TFIMAG "image" drag coefficient of nacelle on itself  
TFPING "image" drag coefficient of other nacelles  
TDWON interference drag coefficient of wing on nacelles

USE: CALL ADDUM (SUMM)

INPUT: SUMM Sum of nacelle drag coefficients

SUBROUTINES CALLED: None

#### Subroutine ADEMP

PURPOSE: To write and sum empennage drag terms.

METHOD: Program EMPNN computes thickness pressure distribution and wave drag of canard(s) or fin(s), and stores drag coefficients in common block /EMPDRG/. Subroutine ADEMP is used to output the drag coefficients.

USE: CALL ADEMP(SUME)

INPUT: SUME Sum of empennage drag coefficients.

SUBROUTINES CALLED: None

### Subroutine BDRAG

**PURPOSE:** To integrate fuselage thickness pressures over fuselage to get wave drag, and calculate wing-on-fuselage interference drag term.

**METHOD:** The fuselage is broken into TNCUT lengthwise strips, and 5 radial segments (per half section) per strip. The fuselage thickness pressures and wing pressures acting on the carry-over region covered by the fuselage are integrated over the fuselage segments. Wing pressures are transferred aft along Mach lines to obtain the point of application on the fuselage.

**USE:** CALL BDRAG (TNCUT)

**INPUT:** TNCUT Number of fuselage strips. (Set at 50 in main program).  
TNMPC, Wing pressure field extended along fuselage centerline. TPWE = pressure coefficient array, TNMPC = X  
TPWE, array, NMPC = number of pressure coefficient values  
NMPC  
/PLIM/ Common block containing wing thickness pressures  
TXCPBY, Fuselage thickness pressure array  
TCPBY, TXCPBY = X, TCPBY = pressure coefficient,  
NCPB NCPB values

**SUBROUTINES CALLED:** GRAB, TBLU1

### Subroutine DZCALC

**PURPOSE:** To calculate wing slopes for all grid elements representing wing planform.

**METHOD:** The wing thickness definition is contained in common block /THICK/, consisting of the array TZORD (thickness profile), NOPCT (percent chord array, NOPCT values). The Y stations corresponding to TZORD are the planform input stations, in array YLED. DZCALC first interpolates the TZORD array linearly at the midpoint of each semispan element, storing the results in AZC. The AZC array is then interpolated chordwise to obtain the dz/dx slope for each element, storing the slopes in TBC. The chordwise interpolation may be either linear or quadratic depending upon an input code. (The TZC storage scheme is described under subroutine TRNSFM.)

Inboard of the wing inboard edge definition (controlled by input ANYBOD) the wing slopes are set to zero.

USE: CALL DZCALC  
INPUT: Wing planform, thickness, ANYBOD  
SUBROUTINES CALLED: TBLU1

#### Subroutine NGETNP

PURPOSE: To interpolate a nacelle pressure signature at a given wing semispan station, for use in calculating nacelle-on-wing interference drag.

METHOD: The nacelle pressure field, TCPN, is a two-dimensional array (for percent chord and span). The wing program, P916, performs wing thickness pressure calculations at selected span stations. It is convenient to have a one-dimensional array, versus X only at that span station, for use in interpolating nacelle pressures for the nacelle-on-wing interference drag.

NGETNP interpolates TCPN to obtain the required one-dimensional pressure signature, which is stored in TXNCW (percent chord) and TCPNCW (pressure coefficient).

USE: CALL NGETNP(YB2)  
INPUT: YB2 Semispan fraction  
/NPF/ Nacelle pressure field definition common block  
SUBROUTINES CALLED: None

#### Subroutine GRAB

PURPOSE: To interpolate pressure coefficient at a given planform location from the wing thickness pressure table or fuselage-on-wing interference pressure table.

METHOD: Linear interpolation for pressure coefficient from a two-dimensional array.

USE: CALL GRAB (X, Y, XCP, JTELL)

INPUT: X X coordinate on wing planform  
 Y Y coordinate on wing planform  
 XCP Interpolated pressure coefficient  
 JTELL Variable to select interpolation array  
 1 = wing thickness pressure  
 2 = fuselage-on-wing pressure  
 VAR Wing thickness pressure array  
 PBWG Fuselage-on-wing pressure array

SUBROUTINES USED: None

#### Subroutine NWONAC

PURPOSE: To calculate buoyancy effect of wing thickness pressures acting on nacelle.

METHOD: The wing-on-nacelle interference drag term, consisting of wing thickness pressures acting on the nacelle area distribution, is computed in NWONAC. Wing thickness pressures are transferred aft along Mach lines to a series of nacelle frustums. The resulting interference drag terms,  $\int C_p dA$ , are stored in array, TDWON, with storage index corresponding to the nacelle origin number.

USE: CALL NWONAC

INPUT: Wing thickness pressure definition (VAR), configuration geometry passed in through common blocks.

SUBROUTINES CALLED: TBLUI

#### Subroutine WGRID

PURPOSE: To define wing grid system data.

METHOD: WGRID is a utility routine, identifying wing grid element data at a selected spanwise element row.

USE: CALL WGRID (JBY, XLE, XTE, LLE, LTE, ALE, ATE)

INPUT: JBY Selected element row  
 XLE Wing leading edge coordinate  
 XTE Wing trailing edge coordinate  
 LLE Leading edge element  
 LTE Trailing edge element  
 ALE Leading edge element fraction (at LLE)  
 ATE Trailing edge element fraction (at LTE)

SUBROUTINES CALLED: None

### Program NACL

PURPOSE: To calculate pressure field of nacelles and associated drag terms.

METHOD: NACL is a principal overlay of NFWD, which is used to calculate the nacelle thickness pressures, and all nacelle interference terms except the wing-on-nacelle and nacelle-on-wing terms. A schematic of the program is shown in Figure 2.4- 3. The calculation sequence is as follows:

1. Construct the pressure field of the nacelles acting on the wing. To do this, a series of wing semispan stations is set up (in NYSET). The program then calculates the composite pressure signature from all nacelles acting at those Y stations, for nacelles first below the wing, then for nacelles above the wing (if any). Either glance or wrap nacelle pressure field option may be used.

The nacelle pressure field is shrunk to 20 X and pressure coefficient values at each y station, stored in common block NPF:

TXPN	x array, percent chord
TCPN	pressure coefficient array
TYP	y semispan stations (percent), NYP values

The nacelle pressure field is also written on tape NT17 for use in the wing pressure summary module.

2. Calculate composite pressure signatures and interference drag terms between nacelles or between nacelles and fuselage. The composite pressure signatures are applied to the area growth of the affected component to get the drag force.
3. "Image" effects of the nacelles are calculated. If the nacelle is located next to the wing, the pressure signature from itself reflects off the wing and back onto the generating nacelle. Similarly, the reflected signature from other nacelles may cause an interference drag. Drag interference due to reflected pressure signatures are calculated separately from the direct effects under (2).

USE: CALL OVERLAY (NFW, 6, 4,0)  
INPUT: Configuration geometry, passed to NACL in common blocks.  
SUBROUTINES CALLED: See schematic, figure 2.4-3.

#### Subroutine BPINT

PURPOSE: To integrate the nacelle(s) pressure signature over fuselage surface to obtain interference drag.

METHOD: The composite nacelle pressure signature (contained in XVAL, CPVAL, JNEXT values) is applied to the fuselage area distribution obtained in subroutine BSETUP. The process is repeated for each nacelle origin. The integral of  $C_p$  times area is called BFORCE.

USE: CALL BPINT (ZNAC, BFORCE, JNEXT)

INPUT: ZNAC Nacelle vertical dimension, relative to wing  
BFORCE Resulting pressure force  
JNEXT Number of values in nacelle pressure signature

SUBROUTINES CALLED: TBLU1

#### Subroutine BSETUP

PURPOSE: To calculate fuselage area growth for use in integrating nacelle-on-fuselage interference drag term.

METHOD: The fuselage is broken into 3 pieces: forebody, mid-body region (wing part), and aft body. The mid-body region covers the X interval of the wing-fuselage intersection.

Each fuselage piece is broken into 50 segments, and the area growth associated with each segment stored in an array (for use later in subroutine BPINT). The arrays are:

FBX, FBDA	forebody X and area
BMX	mid-body X
BMDAU	area growth above wing
BMDAL	area growth below wing
ABX, ABDA	aft-body X and area

USE: CALL BSETUP



INPUT: Fuselage geometry contained in /FUSLG/ wing-fuselage intersection contained in /WBINT/

SUBROUTINES CALLED: TBLU1

#### Subroutine NCOMBIN

PURPOSE: To combine two nacelle pressure fields, for nacelles located above and below the wing, into a single composite pressure field.

METHOD: If nacelles are located both above and below the wing, subroutine NACL generates two nacelle pressure fields: TCPDN (nacelles below) and TCPN (nacelles above). NCOMBIN sums these two nacelle pressure fields, to use in computing the thickness pressure interference drag. The resulting pressure field is stored in TXPN (per cent chord array) and TCPN (pressure coefficient array), with NYP semispan percents contained in TYP

USE: CALL NCOMBIN

INPUT: Nacelle pressure fields described above

SUBROUTINES CALLED: TBLU1

#### Subroutine NCUTOFF

PURPOSE: To delete portions of a nacelle pressure field.

METHOD: In constructing nacelle pressure signatures at an arbitrary distance from the generating body, subroutine NACL calls NCUTOFF to delete parts of the signature intercepted (or not reflected) by intermediate configuration components. The pressure signature is contained in BTO AND CTO (x and pressure coefficients, respectively).

USE: CALL NCUTOFF (X1, X2)

INPUT: X1, X2 Bounding values of X, between which the pressure coefficients are set to zero.

SUBROUTINES CALLED: TBLU1

### Subroutine NGLANC

**PURPOSE:** To perform cutoff of nacelle pressure signature according to glance feature of nacelle pressure field.

**METHOD:** If the "glance" option of calculating the nacelle pressure field is used, this subroutine calculates what part of a pressure signature from a selected nacelle acting at a given spanwise station should be deleted. The approximation is made that the pressure signature propagates along Mach lines for this calculation.

If deletion of part of the signature is required, subroutine NCUTOFF is called.

**USE:** CALL NGLANC (Y, YNAC, BETA)

**INPUT:**

Y	Y station on wing
YNAC	Y station of nacelle generating pressure signature
BETA	Mach number parameter, $\sqrt{M^2-1}$

**SUBROUTINES CALLED:** NCUTOFF

### Subroutine NMERG

**PURPOSE:** To create a single composite pressure signature from multiple superimposed signatures.

**METHOD:** The nacelle pressure field in NACL at a given Y station is built up from contributions from all nacelles. The pressure signature from a single nacelle is contained in arrays BTO and CTO (x and pressure coefficient), NW values of each. The composite signature becomes XVAL and CPVAL, with JNEXT values of each.

All values of the new pressure signature are retained, and are merged with any previous values in XVAL and CPVAL, except that the merged pressure signature is cut off aft of an input X value (XTE). In addition, the location of the bow shock of all pressure signatures in CPVAL is saved (in TSX, NWHAT values).

**USE:** CALL NMERG (JNEXT, NWHAT, XTE)

**INPUT:**

JNEXT	Number of values in composite CPVAL array
NWHAT	Number of combined pressure signatures
XTE	Aft-most X value of interest

SUBROUTINES CALLED: TBLUI

#### Subroutine NACSET

PURPOSE: To separate nacelles into those above or below wing, write nacelle geometry, and calculate nacelle wave drag, wetted area, and  $F(y)$  function.

METHOD: NACSET is used for general bookkeeping involving the nacelles, and is called by NACPF. It scans the nacelle origins and separates them into those below and above the wing. It prints the nacelle input, and then zeroes the tables used to sum the nacelle interference drag terms. It then calls subroutine NBODY to calculate the nacelle  $F(y)$  function, wave drag, and wetted areas.

If all nacelles have the same geometry, NACSET calculates the nacelle  $F(y)$  only once, and shifts it appropriately for other nacelle origins.

USE: CALL NACSET

INPUT: Nacelle data in common blocks

SUBROUTINES CALLED: NBODY

#### Subroutine NORDR

PURPOSE: To arrange an arbitrary set of numbers into a monotonically increasing array.

METHOD: The nacelle bow shock locations contained in TSX (NWHAT values) are in random order. For interpolation by TBLUI, they must be in monotonically increasing order, and cannot be double-valued. NORDR is used to rework TSX as required.

USE: CALL NORDR (TSX, NWHAT)

INPUT: TSX            Array of bow shock X locations  
NWHAT          Number of values in TSX array

SUBROUTINES CALLED: None

### Subroutine PINGRT

PURPOSE: To integrate pressure field over surface of nacelle.

METHOD: Given a pressure signature defined by the XVAL, CPVAL arrays, PINGRT is used to integrate the signature as a buoyancy field over a nacelle area distribution.

USE: CALL PINGRT (J, FORCE, JNEXT)

INPUT: J Index value of nacelle origin  
FORCE Resultant pressure drag term,  $C_p dA$   
JNEXT Number of values in XVAL or CPVAL array

SUBROUTINES CALLED: TBLU1

### Subroutine NYSET

PURPOSE: To set up semispan Y values for calculation of nacelle pressure field.

METHOD: A set of Y stations on the right hand wing are identified in NYSET for use in defining the nacelle pressure field. This set of Y stations consists of the semispan Y values used in the wing thickness pressure calculations (contained in TYB2) plus extra stations immediately inboard and outboard of each nacelle centerline.

The set of Y values is arranged in monotonically increasing order by calling subroutine NORDR. The resulting array is TYP, with NYP values.

USE: CALL NYSET

INPUT: Configuration geometry passed in through common blocks

SUBROUTINES CALLED: NORDR

### Program LOAD6

PURPOSE: To read input geometry for near-field wave drag module.

METHOD: LOAD6 reads the input set up by the near-field program interface in the geometry module.

USE: CALL OVERLAY (NFWD, 6, 2, 0)  
INPUT: See input instructions in User's Manual.  
SUBROUTINES CALLED: TBLUI

#### Program EMPNN

PURPOSE: To calculate thickness pressures and drag coefficients for canard(s) or fin(s).  
METHOD: EMPNN selects empennage surfaces in turn and computes thickness pressures and drag coefficients utilizing the same logic as wing solution (program P916), except interference terms with remainder of configuration are neglected.  
USE: CALL OVERLAY (NFWD, 6, 5, 0)  
INPUT: Empennage geometry data and basic configuration data contained in common blocks.  
SUBROUTINES CALLED: GRID, SETGRID, DZEMP, NFWDR, TBLU1, PWRIT

#### Subroutine DZEMP

PURPOSE: To calculate surface slopes of canard or fin.  
METHOD: DZEMP calculates surface slopes of canard or fin for all grid elements defining the surface. Slopes of grid elements inboard of the side-of-body station are set to zero. Method parallels that of subroutine DZCALC for wing.  
USE: Call DZEMP  
INPUT: Configuration geometry in common blocks  
SUBROUTINES CALLED: GRID, TBLU1

#### Subroutine GRID

PURPOSE: To define empennage grid system data.  
METHOD: GRID is a utility routine, to define grid element data at a selected spanwise element row.

USE: CALL GRID (JBY, XLE, XTE, LLE, LTE, ALE, ATE)  
INPUT: See description under subroutine WGRID  
SUBROUTINES CALLED: None

#### Subroutine SETGRID

PURPOSE: To set up grid system for selected canard or fin.  
METHOD: Given an identified empennage part (defined in common block /EPLAN/), SETGRID sets up the corresponding grid element system. Method parallels that of routine XFM for wing.  
USE: CALL SETGRID  
INPUT: Configuration data in common blocks.  
SUBROUTINES CALLED: TBLU1, GRID

#### Subroutine PWRIT

PURPOSE: To write out pressure distribution of canard or fin.  
METHOD: Common block /DINT/ contains thickness pressure array (ECPE) of canard or fin. PWRIT is called to output the data.  
USE: CALL PWRIT  
INPUT: Configuration and pressure data in common blocks.  
SUBROUTINES CALLED: None

#### Program WRIT

PURPOSE: To write out input data  
METHOD: WRIT is used to write the input and pertinent program data onto the output file.  
USE: CALL OVERLAY (NFWD, 6, 6, 0)  
INPUT: Configuration data in common blocks.  
SUBROUTINES CALLED: None.

## 2.5 WING DESIGN AND OPTIMIZATION MODULE

The wing design and optimization module is primary overlay 8. It contains secondary overlays to calculate:

- o The flat wing solution for the input planform and Mach number
- o Carry-over pressure distribution on wing inboard of side-of-fuselage station.
- o The wing shape and force characteristics for a given loading
- o The optimum combination of loadings for least drag, subject to imposed constraints.

A schematic of the wing design and optimization module is shown in figure 2.5-1. Major logic of the optimization coding is shown in figure 2.5-2.

### Program TEA-253

**PURPOSE:** To call the calculation overlays of the wing camber design program and to call the interactive graphics displays (if used).

**METHOD:** Standard FORTRAN statements.

**USE:** Call OVERLAY (A389, 8, 0)

**INPUT:** Input is in DATA OVERLAY (WDEZ, 10, 1)

### Subroutine FOLLOW

**PURPOSE:** To provide diagnostic information which identifies the entry to and departure from each secondary overlay of the wing camber design program.

**METHOD:** Standard FORTRAN statements.

**USE:** Call FOLLOW (I, J)

**INPUT:** The parameters I and J in the calling statement. I is the secondary overlay number, If J is 1, then overlay I is being entered; if J is 2, then overlay I is being departed.

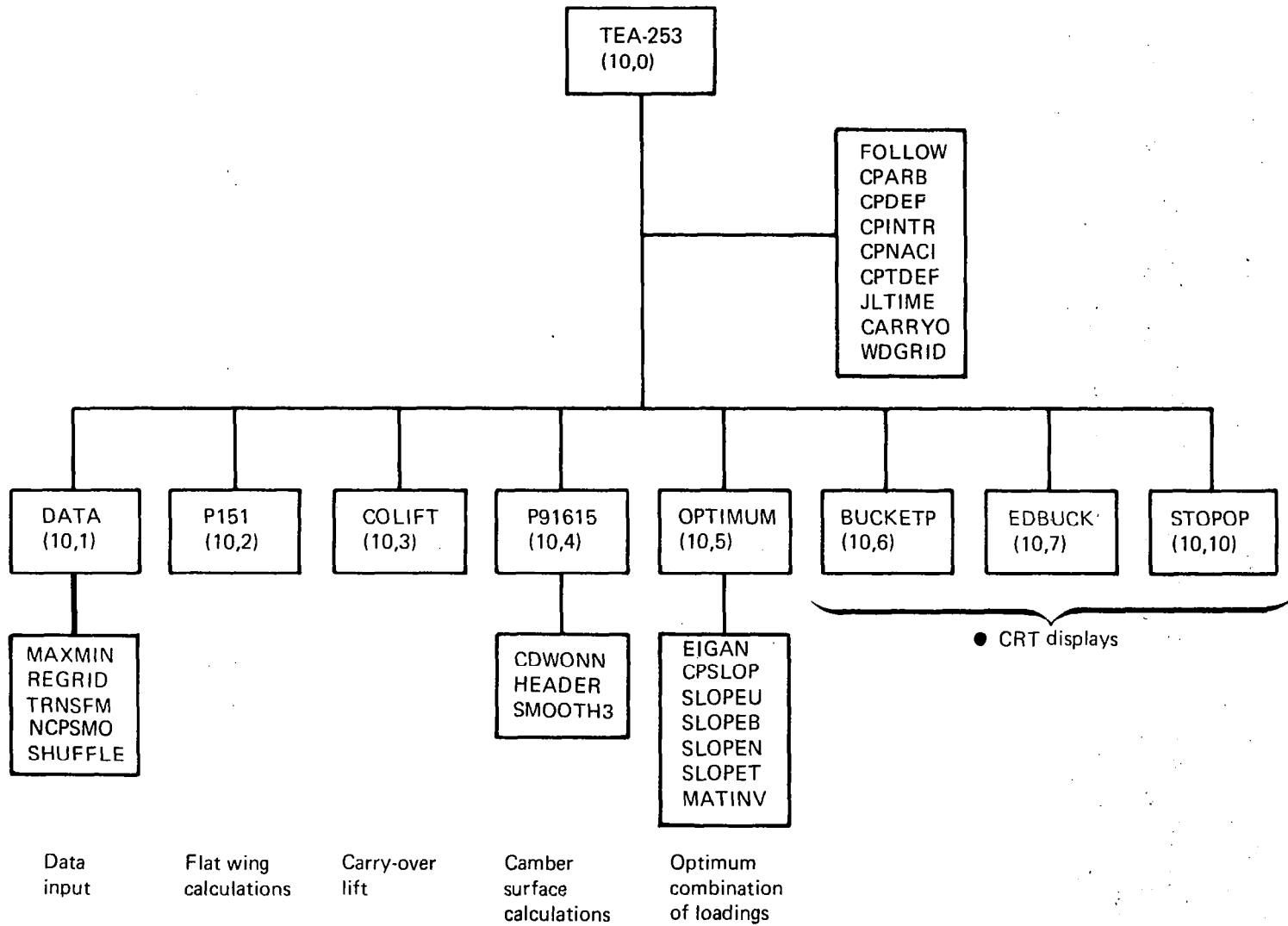


FIGURE 2.5-1.—WING DESIGN AND OPTIMIZATION MODULE



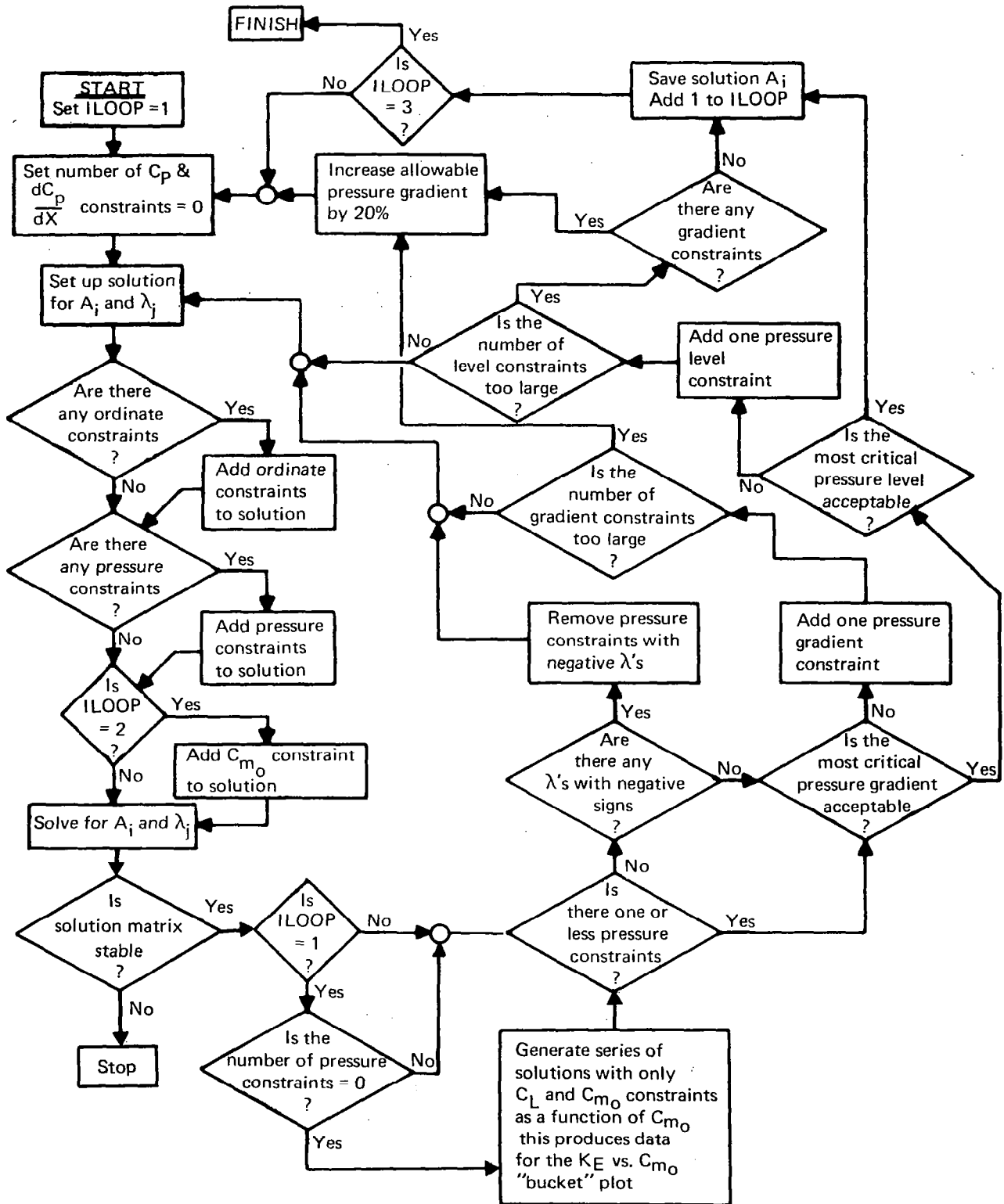


FIGURE 2.5-2.—MAJOR LOGIC OF OPTIMIZATION CODING IN WING DESIGN MODULE

## Function CPARB

**PURPOSE:** To define lifting pressure coefficient in the arbitrarily defined planform region for component loading 11.

**METHOD:** At a given span station, linear interpolation is used to establish the chordwise coordinate of the arbitrary region's leading edge. Then,  $C_p$  is proportional to distance aft of this location.

**USE:**  $CP = CPARB (XF, YF, CHORD)$

**INPUT:**

- XF the chordwise and spanwise location
- YF on the wing planform in fractions of local chord and semispan at which pressure coefficient is to be provided.
- CHORD local wing chord at span station YF.

In addition, a definition of the arbitrary region is passed through COMMON/BLOCK4/.

**PRINCIPAL VARIABLES:**

- CPARB the lifting pressure coefficient in the arbitrarily defined region.
- XARB chordwise and spanwise coordinates
- YARB of points defining the arbitrary region.

## Subroutine CPDEF

**PURPOSE:** To define lifting pressure coefficient as a function of chordwise and spanwise planform location for each of the seventeen component loadings; further, to also define this pressure coefficient for an optimum combination of loadings.

**METHOD:** Lifting pressure coefficients for loadings 1-11 are defined by analytical expressions and for loadings 12-17 by linear interpolation in tables as a function of chordwise and spanwise planform location. An exception is loading 14 (nacelle pressure camber loading) which can be replaced by a smooth form solution created by subroutine NCPSMO. If a wing-body configuration is being designed, then lifting pressure coefficient within the body is obtained by interpolation within the body carry-over tables as a function of planform location (using function CARRYO).

**USE:**  $CALL CPDEF (DX, BETAY, CHORD, KOPT, IFLAG)$

INPUT:

DX is distance aft of leading edge in program units.

BETAY is the product of the Mach number factor ( $\sqrt{M^2-1}$ ) and spanwise distance from the centerline in program units.

CHORD is wing chord in program units at span station BETAY.

KOPT is the index for the loading number table LOADNO.

IFLAG is a parameter which offers the option of deleting the contribution to lifting  $C_p$  of the three configuration-dependent loadings. This option is used during camber surface calculations which use lifting pressures, but not during calculation of wing surface pressures.

Input is also provided through the use of common blocks.

PRINCIPAL VARIABLES:

AI a table of loading factors computed by program OPTIMUM in OVERLAY (WDEZ, 10, 5), one for each of the component loadings, that defines the optimum combination of loadings.

CPBODL a table of lifting pressure coefficient acting on the wing and created by nonsymmetric body volume distribution.

CPBUPW a table of lifting pressure coefficients acting on the wing and created by the body upwash flow field.

CPDEF lifting pressure coefficient (lower surface  $C_p$  - upper surface  $C_p$ ).

FLOAD a table of scaling factors set in program P151 which produces component loading lift coefficients of order 1.0.

LOADNO a table of component loading numbers with index KOPT that are input data in program DATA.

NLOADS the number of component loadings.

PCARRY a table of lifting pressure coefficient in the body carry-over region computed by CPLIFT.

XBODUP the chordwise and spanwise tables, corresponding to the body upwash loading table CPBUPW, in units of percent of local chord and percent of local span, respectively.

YBODUP the chordwise and spanwise tables, corresponding to the body buoyancy loading CPBODL, in units of percent of local chord and percent of local span, respectively.

XCPBOD the chordwise and spanwise tables, corresponding to the body buoyancy loading CPBODL, in units of percent of local chord and percent of local span, respectively.

YCPBOD the chordwise and spanwise tables, corresponding to the body buoyancy loading CPBODL, in units of percent of local chord and percent of local span, respectively.

YSOB span station of the side of body.

SUBROUTINES CALLED: CPARB, CPINTR, CPNACI, CARRYO

### Function CPINTR

**PURPOSE:** This program interpolates linearly in chordwise and spanwise directions for pressure distributions not defined in COMMON blocks.

**METHOD:** Chordwise linear interpolation is used first for two span stations bracketing the span station of interest; then, linear spanwise interpolation is used.

**USE:**  $C_p = \text{CPINTR}(XF, YF, X, Y, CP, NX, NY, NXMAX, NYMAX)$

**INPUT:**

- XF the chordwise and spanwise coordinates of the point on the planform for which pressure coefficient is to be found, in fractions of local chord and of semispan, respectively.
- YF
- X tables of chordwise and spanwise
- Y locations at which pressure coefficient  $C_p$  is defined. NX and NY values, respectively, are defined and NXMAX and NYMAX, respectively, are the maximum values of NX and NY.
- CP two-dimensional array of pressure coefficients.

**PRINCIPAL VARIABLES:** CPINTR interpolated value of pressure coefficient.

### Function CPNACI

**PURPOSE:** To interpolate linearly both chordwise and spanwise for lift pressures due to nacelles that are defined in COMMON. The chordwise locations at which nacelle pressures are defined vary from span station to span station.

**METHOD:** The span stations bracketing the desired span station are located first. Linear interpolation chordwise is completed at these two span stations for the desired chordwise location, and finally, spanwise interpolation is carried out at the desired chordwise location.

An option in CPNACI is to substitute the pressure coefficient value obtained from the smooth form of the nacelle pressure field. This option is used if the loading is the camber surface version of the nacelle pressure field (loading 14) and if the smooth form option code NPSMO = 0.

USE: Cp = CPNACI (XF, YF, LNUM)

INPUT: XF chordwise and spanwise locations  
YF on the wing planform in fractions of local chord and semispan, respectively.  
LNUM loading number.

In addition, the nacelle pressure field Cp and the spanwise and chordwise locations at which it is defined, Y and X, are defined by COMMON /NPF/. This smooth form of the nacelle pressure field is contained in /SMONAC/.

PRINCIPAL VARIABLES: CP a two-dimensional table of nacelle pressure field defined in the analysis program.  
CPNACI interpolated value of the nacelle pressure coefficient.  
X a two-dimensional table of chordwise locations corresponding on a one-to-one basis with the CP table.  
Y a one-dimensional table of semispan stations corresponding to the spanwise variations of both X and CP.

#### Function CPTDEF

PURPOSE: To interpolate linearly both chordwise and spanwise for pressure coefficient due to wing thickness and defined in COMMON.

METHOD: Linear interpolation is carried out chordwise at the two span stations bracketing the desired span station, and is followed by linear spanwise interpolation.

USE: CPT = CPTDEF (XF, YF)

INPUT: XF chordwise and spanwise stations on  
YF the wing planform in fractions of local chord and semispan, respectively.

In addition, the wing thickness pressures are defined in a two-dimensional array CPT in COMMON block PLIM; the chordwise locations X and spanwise locations Y corresponding to the elements in CPT are also defined in COMMON.

PRINCIPAL VARIABLES: All defined above.

### Subroutine JLTIME

PURPOSE: To print out time since job began execution and to print out the time increment since the immediately preceding call to this subroutine.

METHOD: Interrogate the system timing subroutine SECOND.

USE: CALL JLTIME

INPUT: None.

OUTPUT: Time increment and time mentioned above, both in decimal seconds.

SUBROUTINE CALLED: SECOND

### Function CARRYO

PURPOSE: To compute lifting pressure coefficient within the body carry-over region by interpolation within the tabular data provided by COLIFT as a function of planform location.

METHOD: Linear interpolation chordwise and spanwise.

USE: CP = CARRYO (DX, BY, CHORD, KOPT)

INPUT: DX is distance aft of the leading edge in program units.  
BY is the product of the Prandtl-Glauert Mach number parameter and the spanwise distance from the centerline, in program units.  
CHORD is wing chord in program units at span station BY.  
KOPT is the index for the loading number in table.  
LNADN Input is also provided by the use of common blocks.

### Subroutine WDGRID

PURPOSE: To define wing grid system.

METHOD: WDGRID is a utility routine to identify the grid elements defining the wing planform at a selected spanwise element row.

USE: CALL WDGRID (JBY, XLE, XTE, LLE, LTE, ALE, ATE)

INPUT: JBY selected spanwise element row  
XLE wing leading edge coordinate at JBY  
XTE wing trailing edge coordinate  
LLE wing leading edge element  
LTE wing trailing edge element  
ALE element fraction at leading edge  
ATE element fraction at trailing edge

#### Program DATA

PURPOSE: To read input data for the wing design module.

METHOD: Program DATA reads the input data (set up by the wing design interface in the geometry module), and writes it out according to the print code set in the input. The wing grid system is also established (in subroutine TRNSFM).

USE: CALL OVERLAY (WDEZ, 8, 1)

INPUT: See User's Manual

SUBROUTINES CALLED: TRNSFM, MAXMIN, REGRID, JLTIME, NCPSMO, SHUFFLE

#### Subroutine MAXMIN

PURPOSE: To identify and print both the maximum and the minimum elements in a two-dimensional array.

METHOD: Standard FORTRAN library subroutines,

USE: CALL MAXMIN (A, NX, NY, NXMAX, NYMAX)

INPUT: A a two-dimensional array with maximum dimensions NXMAX and NYMAX containing (NX)(NY) values to be searched for maximum and minimum.

OUTPUT: THEMAX The maximum element of A.  
THEMIN The minimum element of A.

### Subroutine NCPSMO

**PURPOSE:** To define a smooth form of the nacelle pressure field (NPF) for use in calculating the camber surface corresponding to the NPF loading. This subroutine is called if loading 14 is used and the option code NPSMO = 0.

**METHOD:** A load definition is defined which has the same boundaries as the NPF and nominally the same overall lift force. The load thus defined is a series of linear slopes varying smoothly spanwise, which are then stored in common block /SMONAC/.

**USE:** CALL NCPSMO

**INPUT:** Nacelle pressure field in common block /NPF/.

### Subroutine REGRID

**PURPOSE:** To define grid system data when the RESTART option is used.

**METHOD:** When the RESTART option is used, all basic loading data is input from cards (or tape) and grid system calculations normally made (which will be needed) are bypassed. REGRID sets up the appropriate arrays, which include the wing chord at each of the spanwise calculation stations, and the percent chord and percent wing length associated with each grid element along those spanwise stations.

**USE:** CALL REGRID

**INPUT:** COMMON block BLOCK1 is used to input a definition of the wing planform and the associated parameters required to define the Mach box grid system.

### Subroutine SHUFFLE

**PURPOSE:** To rearrange order of RESTART data to allow for arbitrary input of loading number order and/or Z constraint order.



METHOD: The RESTART file contains lift, interference drag, and Z value data which is stored in the order generated. If a subsequent case is input in which the loading number order is different, or Z constraints are applied in a different order, it is necessary to rearrange the RESTART data into the corresponding form.

Subroutine SHUFFLE does this by comparing the new input order with the order used in the original sequence (also stored in the RESTART file), and rearranging the data as required.

USE: CALL SHUFFLE

SUBROUTINES CALLED: None

#### Subroutine TRNSFM

PURPOSE: To convert input data to program units and set up wing grid system.

METHOD: The wing is represented in the program by a set of rectilinear elements, with the number of semispan element rows given by input TNN. TRNSFM interpolates the planform at the centerline of each element row to define the leading edge and trailing edge values, converts them to program scale (using  $RATIO = Y_{wing\ tip} \times BETA/TNON$ ), and stores them in arrays TXLE and TXTE. Special values XLEO and XTEO define the wing centerline leading edge and trailing edge.

If the parabolic apex option is selected in the input (YSNOOT=0.), the wing leading edge out to YSNOOT is altered to a parabolic shape.

If a fuselage is input with side-of-fuselage station greater than 0., the grid system element row (NSOB) corresponding to the side-of-fuselage station is identified. TRNSFM then checks to see that NSOB is included in the spanwise camberline row array (TJBYS), adding it if necessary.

USE: CALL TRNSFM

INPUT: A definition of the wing planform in physical units is passed to TRNSFM by COMMON block BLOCK1 and block SNOOT.

SUBROUTINES CALLED: TBLU1

## Program P151

**PURPOSE:** To calculate the flat wing loading; and to set normalizing factors for component loadings 1-10 so that their lift coefficients will be approximately 1.0.

**METHOD:** The method of the flat wing solution is essentially the same as described for the lift analysis module (using the equations given in the Theoretical Development document, Part 1), except that only the wing is present; (no fuselage, nacelles, etc). The wing is scanned from front to back and centerline to right hand wing tip, computing the pressure coefficients (CP) for all field point elements (LSTAR, NSTAR). A 9-point smoothing equation is applied after all pressure coefficients are calculated.

The lifting pressure distribution is calculated over the surface of the wing to obtain lift coefficient (SCL9), drag coefficient (SCD9), DCM/DCL (DCMCL) and drag-due-to-lift factor (KF), based on input reference geometry.

For the given planform, normalizing factors (array FLAOD) are then calculated which will produce a lift coefficient of approximately unity when used with each of the analytically defined basic loadings (1-10) in program P91615.

**USE:** CALL OVERLAY (WDEZ, 8, 2, 0)

**INPUT:** Configuration data in common blocks

**SUBROUTINES CALLED:** JLTIME

## Program COLIFT

**PURPOSE:** To calculate carry-over lift distribution in fuselage region.

**METHOD:** COLIFT creates a definition of the carry-over lift distribution for all selected loadings, to be applied to the wing planform region covered by the fuselage (if there is one). The calculation procedure utilizes the analysis form of the lifting pressure solution (described in the lifting analysis program writeup) for spanwise element rows inside the side-of-body station.

The resultant carry-over lift distributions are stored in array PCARRY. Carry-over lift distributions are not computed for the configuration dependent loadings (loadings 15, 16, and 17) since those are already of the carry-over type.

COLIFT also integrates lift distributions to get drag, lift, and pitching moment of loadings acting on fuselage, which are stored in common block /FUSCX/.

USE:

CALL OVERLAY (WDEZ, 8, 3,0)

INPUT:

NSOB side-of-body element row  
TXB, TZB fuselage camber shape  
BODCL(I) carry-over lift of I-th loading acting on fuselage.  
BODCD(I) carry-over drag of I-th loading  
BODCM(I) carry-over pitching moment of I-th loading  
PCARRY carry-over pressure distribution  
(I,M,NYS) due to I-th loading. NYS spanwise rows given in array KYS, M chordwise percentages given in array SXP.  
USEBOD logical flag (carry-over lift calculated if USEBOD = TRUE)

SUBROUTINES CALLED:

CPDEF, JLTIME, TBLU1, WDGRID

OVERLAY (WDEZ, 10, 4)  
Program P91615

PURPOSE:

To calculate the aerodynamic characteristics of a specified lift loading and the camber surface required to support it. Both component loadings and combinations of component loadings are handled. If requested, all data for the RESTART option are punched in this program.

METHOD:

Program P91615 solves for the camber surface required to support a specified loading and the associated force coefficients, using the equations given in the Theoretical Development document (Part 1). The program is actually used in two ways:

- 1) To calculate the force coefficients and interference drag characteristics of a set of basic loadings.
- 2) To calculate the camber surface for an optimum combination of loadings.

The program code used to define the usage of P91615 is KOPTI. If KOPTI is greater than the number of basic loadings used, then option (2) above is employed.

#### Option (1):

In the calculation of the camber surface and force coefficients, a series of semispan stations are selected in the program input (TJBYS). The program then picks a loading, calculates the required surface slopes for all elements at each TJBYS station, and integrates the slope distribution to obtain the camberline. In these calculations, each element along TJBYS is identified by the nomenclature LSTAR (X) and NSTAR ( $\beta y$ ), as described in the theory document. Z ordinates at specified points on the planform are interpolated and saved if Z constraints are to be applied.

After the camberlines and sectional force coefficients of all spanwise stations have been computed, the characteristics are integrated spanwise to obtain lift coefficient (CL), drag coefficient (CD), and pitching moment coefficient (CMAPEX). These are converted to input reference geometry basis and become CLR and CDR, lift and drag coefficients. The pitching moment coefficient is adjusted to the value at zero lift, and becomes CMOR. Drag-due-to-lift factor is labeled  $KE = CDR/(CLR)^2$ . The interference drag coefficients are stored in array CDI.

After all calculations are completed for a given loading, the force coefficients are stored in array TDRAG, and the process repeated until all loadings have been used.

The force coefficients and interference drag coefficients of all loadings are then converted to the component and interference forms used in the matrix solution described in the Theoretical Development document, and stored in common blocks to be passed to program OPTIMUM.

Finally, the RESTART data are written onto TAPE3, and also punched into cards, if requested. These data consist of all component and interference drag terms, the configuration-dependent loadings (if used), and grid system data calculated by P91615.

#### Option (2):

If option 2 was selected, involving the calculation of the wing shape for an optimum combination of loadings, the calculation sequence is the same as if a basic loading was being used. However, the interference characteristics are not required. The resulting camber surface is stored in common block/CAMBER/ in the following form:

TPCT	percent chord array, NOPCT values.
TYB2	semispan array, JBYMAX values.
TZORD(X,Y)	camber surface Z/C values, in percent.
IFZC	1, to denote Z/C in percent.

The camber surface will also be punched into cards, if requested in the program input.

USE: CALL OVERLAY (WDEZ, 8, 4)

INPUT: All input is handled by COMMON blocks, which pass the required data from DATA.

SUBROUTINES CALLED: CDWONN, CPDEF, CPINTR, CPNACI, CPTDEF, HEADER, JLTIME, SMOOTH3, TBLU1

#### Function CDWONN

PURPOSE: To calculate the axial force acting on nacelles due to the wing-lift flow-field.

METHOD: The wing lower surface lifting pressures are projected downward in a vertical plane and aft along Mach lines to the nacelle locations where their product with nacelle incremental frontal area is numerically integrated to produce a nacelle axial force.

USE: CDN = CDWONN(KOPT)

INPUT: KOPT component loading index.

In addition, wing planform information is passed to CDWONN by COMMON block BLOCK1 and nacelle geometry is passed by block BLOCK11.

PRINCIPAL VARIABLES:

CPTERM	wing lower surface pressure coefficient due to wing lift only.
XLEN	longitudinal coordinates of the
XTEN	wing leading and trailing edges at
CRDN	the nacelle span station, and the corresponding wing chord.
RNAC	two-dimensional arrays defining
XNAC	nacelle radius as a function of nacelle longitudinal station, The first parameter is the nacelle number index.
XYZ	a two-dimensional array specifying the coordinates of each of the nacelles, forward-most point. The first parameter is the nacelle number index, and the second parameter defines the coordinate being referenced - i.e., first value is X, second is Y, and third is Z.

SUBROUTINE CALLED: CPDEF

### Subroutine HEADER

PURPOSE: To write out loading number and case identification.

METHOD: Standard FORTRAN statements.

USE: CALL HEADER(KOPT)

INPUT: KOPT component loading index.

In addition, the loading number index, loading name, and case identification are passed via COMMON statements.

OUTPUT: Titling information for each component loading prior to its aerodynamic and camber analysis.

### Subroutine SMOOTH3

PURPOSE: To apply 3-point smoothing to a selected range of elements within a one-dimensional array.

METHOD: Each element to be smoothed is replaced according to the following algorithm:

$$y_i = \frac{1}{4}(y_{i-1} + 2y_i + y_{i+1})$$

where  $y_{i-1}$  and  $y_{i+1}$  are the immediate neighbors of  $y_i$  before smoothing. If  $y_i$  is the first element in the array to be smoothed, then

$$y_i = \frac{1}{3}(2y_i + y_{i+1})$$

and if  $y_i$  is the last,

$$y_i = \frac{1}{3}(y_{i-1} + 2y_i)$$

USE: CALL SMOOTH3(A, IFIRST, ILAST, N, NARRAY)

INPUT:           A           the one-dimensional array of data to be smoothed.  
                  IFIRST    first and last elements in A to be smoothed.  
                  ILAST    smoothed. All elements between will be smoothed.  
                  N         the number of times the smoothing algorithm is to be applied.  
                  NARRAY   the maximum number of elements in A.

OVERLAY (WDEZ, 10, 5)  
Program OPTIMUM

PURPOSE:         To define various optimum combinations of lift loadings in terms of their load strength factors  $A_i$ .

METHOD:         Lagrange's method of undetermined multipliers (as described in part I: Theory), as a function of the aerodynamic characteristics of each of the component loadings and their mutual interferences. In program OPTIMUM, the DO loop on statement 730 (index ILOOP) is used twice only if a constraint on pitching moment coefficient is used. For ILOOP = 1, program OPTIMUM produces a solution for minimum drag with only a lift constraint (this solution also includes constraints on ordinates if they are used); 21 solutions of the drag-due-to-lift factor (KE) and zero lift pitching moment coefficient (CMO) defining the design "bucket" plot; and if requested, a solution for minimum drag with lift coefficient and wing upper surface pressure constraints (this solution also includes constraints on ordinates if they are used). If the wing pressure criteria are satisfied by the first solution, the latter solution is set equal to the first. For ILOOP = 2, program OPTIMUM adds a constraint on pitching moment coefficient at zero lift to both the solution with lift coefficient constraint and the solution with lift and pressure constraints.

Within the ILOOP loop, the left-hand-side solution matrix AMAT and the right-hand-side solution matrix BMAT are calculated first, corresponding to figure 4.4-4 of the Theoretical Development document (Part 1). The left-hand-side matrix is stored in ATEMP for multiplication with the solution as a test of its accuracy; this multiplication should produce the right-hand side.

Subroutine MATINV is called to solve for the load strength factors  $A_i$  and the Lagrange multipliers, corresponding to the left-hand-side column matrix in figure 4.4-4 of the Theoretical Development document. The solution load strength factors  $A_i$  are stored in two arrays - the AI array so that the current solution is defined in the wing lifting pressure subroutine CPDEF, and in the TAI array, so that the solution will be defined for program P91615 after program OPTIMUM has been exited. The array TAI has capacity for four sets of load strength factors (under IDUM), corresponding to the four types of available solutions as follows:

IDUM	Lift Constraint	Pitching Moment Constraint	Wing Pressure Constraint(s)
1	yes	no	no
2	yes	yes	no
3	yes	no	yes
4	yes	yes	yes

Lift coefficient CLSOL, drag coefficient CDSOL, and pitching moment coefficient CMOS are computed in program units from the load strength factors and the aerodynamic coefficients of the component loadings. These parameters are then converted to the input reference geometry basis, CLR, CDR, and CMOR, respectively. Values of KE and CMO from previous solutions (if any) for IDUM = 4 are shifted one location toward the rear of the "bucket" plot arrays CKE and CMZERO, and the current solution data are stored in these arrays.

The wing upper surface pressure coefficient CPUS and the corresponding longitudinal gradient DCPDX are calculated next and compared everywhere with the user defined limiting values, CPLIM and CPGLM, respectively. The minimum difference of CPUS - CPLIM is identified (CPMIN) and the maximum difference of DCPDX - CPGLM is identified (GRADM), along with their respective planform locations. This completes the solution corresponding to IDUM = 1 above.



Then, if ILOOP = 1 and if no pressure constraints have been applied, values of KE and CMO are generated by the DO loop on 630 for the "bucket" plot. This solution parallels the one just described, except that a constraint on design pitching moment coefficient at zero lift (CMOD) is added and is varied through 21 values. The range of values of CMOD depends on design lift coefficient CLDZIN, and is centered on the pitching moment coefficient corresponding to the solution for IDUM = 1, if available, or on zero. Values of CMOD are truncated for plotting convenience.

After the bucket plot data are generated and stored, program OPTIMUM tests to see if pressure constraints on the wing upper surface have been requested and whether they are necessary, if requested. If both tests are positive, then a loop to statement 10 is used to apply constraints on wing pressure. This loop is within the loop on 730 (index = ILOOP). The loop which tests wing upper surface pressure functions as follows: First, the critical pressure gradient is tested to see if it is satisfactory. If it is not, a constraint on pressure gradient is applied at the planform location where the gradient criterion is violated by the greatest margin. At this location, the gradient is constrained to 75 percent of the gradient criterion; this provides a margin to prevent the gradient from exceeding the limit in the immediate vicinity of the constraint. The program then loops to statement 10 and the process is repeated until the overall gradient criterion is satisfied.

The program then tests critical pressure level against its acceptable level. If it is not acceptable, a pressure level constraint is added at the planform location where the pressure level criterion is most strongly violated. The lifting pressure coefficient at the critical planform location is calculated which just meets the upper surface level criterion, and the lifting pressure is constrained to 95 percent of this value. The 95 percent factor provides a margin to prevent the pressure from exceeding the criterion in the immediate vicinity of the constraint location. The program then loops to statement 10, and a new solution is generated.

It has been found that both pressure gradient and pressure level constraints imposed early in the design cycle can become unnecessary, and even undesirable, when later constraints are imposed. This situation can be detected in the solution by noting that the

algebraic signs of the pressure constraint Lagrange multipliers change from positive to negative when the constraints become unnecessary.

The design program takes advantage of this by testing the Lagrange multipliers of the pressure constraints for each solution cycle. If there are unnecessary constraints, they are removed, and the solution cycles back to statement 10 with fewer pressure constraints.

In summary, then, each solution is tested for wing upper surface pressure gradient and pressure level, and for negative pressure constraint Lagrange multipliers. The hierarchy is:

- (1) Test for unnecessary pressure constraints
- (2) Test most critical pressure gradient.
- (3) Test most critical pressure level.

If one of these is violated, appropriate action is taken, and the program loops back to statement 10. Throughout this cyclic process, each solution includes constraints on Z ordinates if such constraints have been requested.

The cyclic process of adding and removing constraints can occasionally result in an "endless loop" fault if allowed to proceed unrestrained. The problem can occur due to an improper matrix formulation caused by imprecise interference drag calculations between loadings. Imprecision in the interference drag calculations is inherent in the panel type approach, and it is not possible to predict if it will cause an endless loop in the optimization. It is possible, however, to detect a mathematically improper matrix formulation through an eigenvalue check. This test is performed in subroutine EIGAN. If the test shows an unstable matrix, the solution is halted and the user must redefine the problem (usually through the addition of a Z constraint).

It is certainly possible to define wing upper surface pressure criteria which cannot be satisfied, either through input errors or simply through ignorance of, say, wing thickness pressures on the first run of a new configuration in the system. Should this occur, the program will add pressure gradient and/or pressure level constraints until it reaches one of two possible constraint maxima.

One maximum on the number of constraints is imposed by the number of loadings used. The total number of constraints, including those on lift, pitching moment, configuration-dependent loadings, ordinates, and pressure, can at most be equal to the number of loadings. This situation is undesirable for it leaves no degrees of freedom for drag minimization; consequently, this limit has been set so that two degrees of freedom remain free for drag minimization (for small numbers of loading, this is reduced to one).

The second maximum imposed on the number of pressure constraints is dictated by the number of loadings that are free to influence longitudinal pressure gradient. A maximum of nine loadings do so - loadings 2, 5-8, and 11-14. It has been thought desirable to leave one degree of freedom for drag minimization for gradient constraints. For this purpose, the number of permissible gradient constraints is further reduced by one whenever a constraint is imposed on  $C_{m0}$ , since  $C_{m0}$  constraints are satisfied primarily by the same x-dependent loadings used to satisfy gradient criteria.

If the program reaches a pressure constraint maximum, it checks to see if gradient constraints have been imposed. If one or more gradient constraints have been imposed, the program arbitrarily increases the gradient criterion table by 20 percent, and begins anew with no pressure constraints. This process is also cyclic and can be repeated up to 50 times before halting with the solution produced by the last cycle.

If no pressure gradient constraints have been used, the program halts immediately upon reaching one of the two loading maxima.

For ILOOP = 2, a pitching moment constraint is added to the solution, and lift coefficient, ordinate and pressure limiting constraints function as they did for ILOOP = 1. The bucket plot calculations are omitted.

Major logic of the optimization sequence in the wing design module is illustrated in figure 2.5-2.

Program OPTIMUM provides for bypassing the optimization process in the case of a single camber surface producing loading. This option requires the input code SLFLAG = 1.0, in which case the loading numbers requested bypass the usual test for possible overconstrained solution. Instead, a test is performed to ensure that only one camber surface

loading is requested (other configuration-dependent loadings, 15-17, not producing a camber surface may be present). Values of  $A_i$  are then defined consistent with the lift coefficient requested, and the program then jumps to the point after the usual optimization is completed.

USE: CALL OVERLAY (WDEZ, 8, 5)

INPUT: All input is by means of COMMON blocks.

PRINCIPAL VARIABLES:

AI	load strength factor $A_i$
AMAT	left-hand-side solution matrix
BMAT	right-hand-side solution matrix
CDIJ	interference drag coefficient
CDSOL	solution drag coefficient
CDWON	interference drag coefficient of wing lift acting on nacelles.
CLDZIN	design lift coefficient
CLI	the $i$ th component lift coefficient
CPBODL	lifting pressure coefficient due to unsymmetric body volume distribution
CPBODU	body pressure coefficient acting on the wing upper surface
CPBUPW	lifting pressure coefficient due to the body upwash loading
CPLIMIT	wing upper surface limit pressure coefficient (on input table)
CPNAC	wing lifting pressures due to nacelles
GRADL	the array of maximum longitudinal pressure gradient on the wing upper surface actually used in the wing design module. This array is increased by 20 percent for those solutions having maximum number of pressure constraints, including at least one on gradient.
GTEMP	the array of user-specified maximum pressure gradient. This array is copied into GRADL on entry into OPTIMUM.
MAXNOG	the number of loadings that contribute to longitudinal pressure gradient and that are free to vary.
NCMAX	maximum number of solution constraints
NPCON	number of pressure coefficient constraints
NGCPN	the number of solution constraints on wing upper surface longitudinal gradient.

NLCON number of direct solution loading constraints due to use of configuration-dependent loadings  
 NXCMAX the maximum number of pressure gradient constraints.  
 NZCON number of ordinate constraints  
 OPTION integer array controlling extent of four types of solutions  
 TAI up to four sets of load strength factors  $A_i$ , corresponding to the four types of solutions.  
 TBETAY stored parameters which define a solution lifting pressure constraint, namely, spanwise location,  
 TDXM chordwise location, local chord, and  
 CHORDT allowable lifting pressure coefficient, respectively.  
 CPLMX  
 USEBOY a logical flag indicating use of body buoyancy loading if true  
 USEBUP a logical flag indicating use of body upwash loading if true.  
 USECMC a logical flag indicating use of pitching moment constraint if true  
 USECPL a logical flag indicating use of wing upper surface pressure limiting if true  
 USEOPT a logical flag indicating use of wing thickness pressures if true  
 USENAC a logical flag indicating use of nacelle buoyancy loading if true  
 USEZC a logical flag indicating use of ordinate constraints if true  
 XZCON longitudinal and lateral planform  
 YZCON locations of the ordinate constraints physical units.  
 ZCON constrained values of ordinate corresponding on a one-to-one basis with XZCON and YCON. Z1(17,5) a two-dimensional array of up to five ordinates for each of the seventeen component loadings.

OUTPUT:

Essential output is the set of up to four solution definitions in terms of the loading strength factors  $A_i$ . These are passed by COMMON blocks back to the camber surface calculation overlay OVERLAY (WDEZ, 10, 2). In addition, varying amounts of information about the solutions are printed, depending on the choice of the print control parameter, IPRINT. These are described in more detail for the example case in the Test Cases, Part 4.

SUBROUTINES CALLED: CPDEF, CPINTR, CPNACI, CPSLOP, CPTDEF, JLTIME, MATINV,  
SLOPET, EIGAN

#### Subroutine CPSLOP

PURPOSE: To provide the longitudinal gradient of wing upper surface pressure for component loadings individually and when combined in a solution. This subroutine parallels subroutine CPDEF in structure.

METHOD: Standard FORTRAN statements.

USE: CPSLOPE = CPSLOP (DX, BETAY, CHORD, K)

INPUT: DX distance aft of the wing leading edge in program units.  
BETAY the product of the Prandtl-Glauert Mach number parameter and the spanwise distance from the centerline, in program units.  
CHORD wing chord in program units at span station BETAY.  
K index for the loading number table LOADNO.

Input is also provided by means of COMMON blocks.

SUBROUTINES USED: CPARB, SLOPEB, SLOPEN, SLOPEU.

#### Subroutine EIGAN

PURPOSE: To perform eigenvalue check of optimization solution matrix.

METHOD: Subroutine EIGAN, and associated arithmetic subroutines FORMAM, CMAB, JORD, and ANALIG perform a stability analysis of the left-hand-side optimization matrix. The matrix is considered stable if there are no negative eigenvalues and the number of zero eigenvalues is not greater than the number of imposed constraints.

USE: CALL EIGAN (A, MD, NRL, NRF, NN, NZ)

INPUT: A Left-hand side matrix  
MD First dimension of A  
NRL Number of functions being minimized  
NRF Number of constraint functions  
NN Number of negative eigenvalues  
NZ Number of zero eigenvalues

SUBROUTINES CALLED: ANALIG, FORMAM

#### Subroutine MATINV

PURPOSE: To solve a set of linear, simultaneous equations. This is a NASA-LRC library subroutine.

METHOD: See LRC library.

USE: CALL MATINV (A, N, B, M, DETERM, IPIVOT, INDEX, NMAX, ISCALE)

#### Function SLOPEB

PURPOSE: To provide the longitudinal gradient of the wing upper surface pressure coefficient due to the body-buoyancy configuration loading.

METHOD: Interpolation of the body buoyancy contribution due to wing upper surface pressure coefficient at the chordwise stations which bracket the input chord station. The gradient is simply the difference of these pressures divided by the difference in longitudinal distance, all at the proper span station.

USE: CPB = SLOPEB (XF, YF, C, J)

INPUT: XF chordwise planform location as a fraction of local chord.  
YF spanwise planform location as a fraction of semispan.  
C chord at span station YF. Tabular input is also provided by the COMMON block NPF.  
J code to indicate whether upper or lower wing surface pressure is desired. J = 1 (upper), J = 2 (lower)

#### Function SLOPEN

PURPOSE: To provide the longitudinal gradient of wing upper surface pressure due to the nacelle pressure distribution when used as a camber loading.

METHOD: As for SLOPEB. However, if the smooth form of the nacelle pressure field is selected (input code NPSMO = 0), then the gradient provided is taken from the associated smooth form pressure definition.

USE: CPN = SLOPEN (XF, YF, C)

INPUT: XF chordwise planform location as a fraction of local chord.  
YF spanwise planform location as a fraction of semispan.  
C chord at span station YF. Tabular input is also provided by the COMMON block NPF.

#### Function SLOPET

PURPOSE: To provide the longitudinal gradient of wing thickness pressures.

METHOD: As for SLOPEB.

USE: CPT = SLOPET (XF, YF, CHORD)

INPUT: XF chordwise planform location as a fraction of local chord.  
YF spanwise planform location as a fraction of semispan.  
CHORD wing chord at span station YF. Wing thickness pressures are provided in tabular form by array CPT in COMMON block PLIM.

#### Function SLOPEU

PURPOSE: To provide the longitudinal gradient of the wing upper surface pressure due to the body upwash configuration-dependent loading.

METHOD: As for SLOPEB.

USE: CPU = SLOPEU (XF, YF, C)

INPUT: XF chordwise planform location as a fraction of local chord.  
YF spanwise planform location as a fraction of semispan.  
C wing chord at span station YF. The loading due to body upwash is provided in array CPBUPW by COMMON block CPBUPW1.



## 2.6 LIFT ANALYSIS MODULE

The lift analysis program is primary overlay 7. The program is divided into separate elements to read input, transform input into program units, and perform the lifting pressure calculations as shown schematically in figure 2.6-1.

The graphics displays are called as shown in figure 2.6-1.

### Program TEA201

PURPOSE: Primary level of lift analysis module

METHOD: TEA201 sets up the calculation sequence for the drag-due-to-lift analysis program. The calculation loops are:

DO 50 JDO Mach number loop, repeated for each Mach number.

DO 40 MLIMIT Pressure limiting loop. LIMIT angles of attack, if limiting requested.

DO 30 JCALP Canard angle of attack loop. Repeated for each canard alpha, if canard is present.

USE: CALL OVERLAY (ANLZ, 7, 0, 0)

INPUT: See User's Manual.

SUBROUTINES CALLED: RCALC

### Subroutine DUBINT

PURPOSE: To perform double interpolation in array

METHOD: Given a two-dimensional array, DUBINT performs double linear interpolation for an answer at a specified location in array.

USE: CALL DUBINT (X1, Y1, TX, TY, NX, NY, TBL, MX, MY, ANS)

INPUT: X1 X location  
Y1 Y location

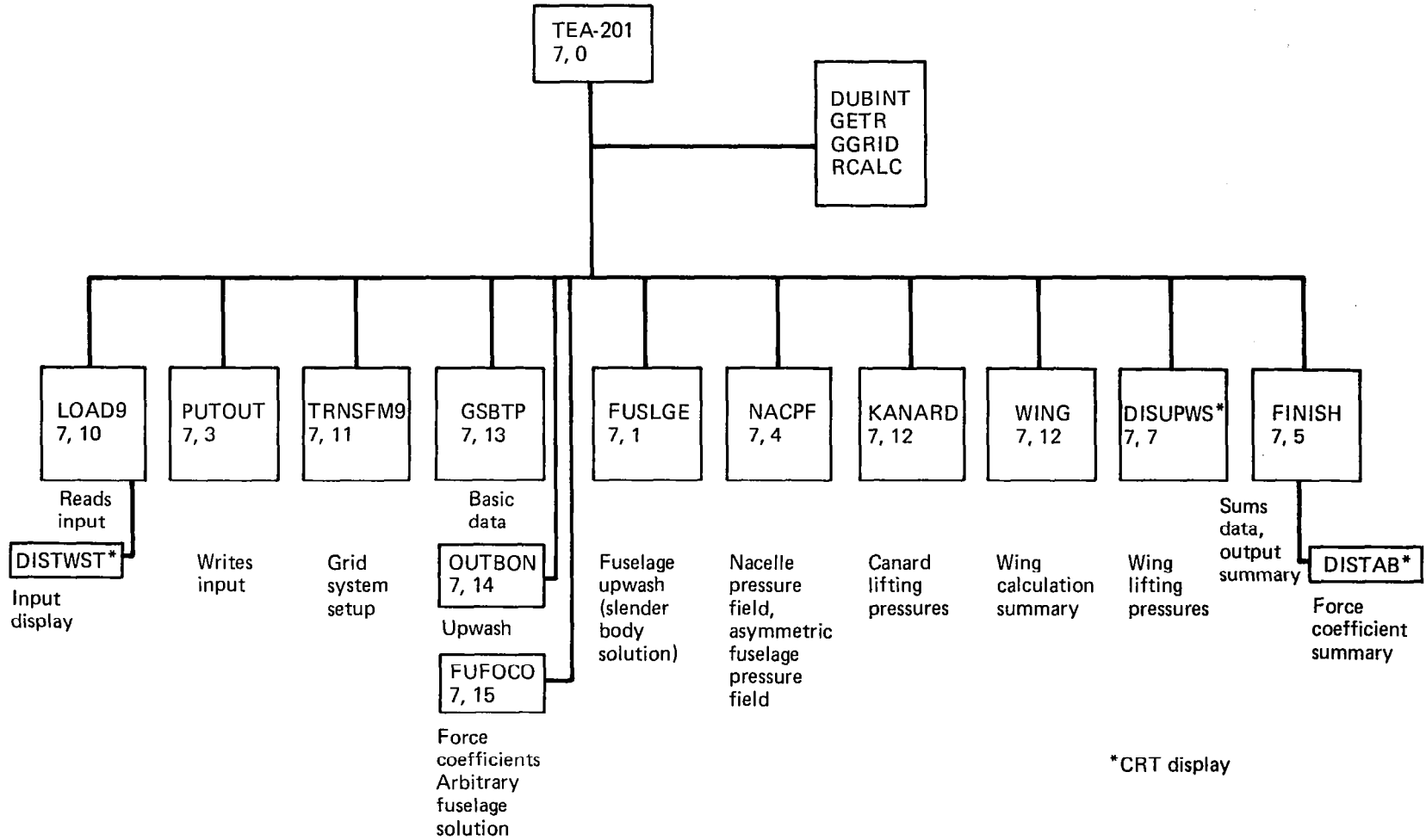


FIGURE 2.6-1.—LIFT ANALYSIS MODULE SCHEMATIC

TX	X array, NX values
TY	Y array, NY values
TBL	Table being interpolated
MX, MY	Size of TBL in TBL DIMENSION statement
ANS	Interpolated answer at X1, Y1

SUBROUTINES CALLED: None

#### Subroutine GETR

PURPOSE: To calculate influence factor for specified grid element.

METHOD: Given an element located in the forecone from a selected field point element, GETR provides the corresponding influence factor. (The influence factor equation is discussed in the Theoretical Development document, Part 1.)

USE: CALL GETR (LSTAR, LVAR, NDIF, R)

INPUT:	LSTAR	Field point element
	LVAR	Specified grid element
	NDIF	NSTAR - N
	R	Influence factor

SUBROUTINES CALLED: None

#### Subroutine GGRID

PURPOSE: To define leading edge and trailing edge data for grid system for specified semispan element row.

METHOD: Given a wing semispan station, GGRID defines the leading edge and trailing X values, the corresponding grid elements, and the associated element fractions. GGRID is used for wing, canard or horizontal tail.

USE: CALL GGRID (JBY, XLE, XTE, LLE, LTE, ALE, ATE, NK)

INPUT:	JBY	Semispan element row
	XLE, XTE	Leading and trailing edge X-locations of planform at JBY.
	LLE, LTE	Grid elements corresponding to XLE, XTE.
	ALE, ATE	Fractions of elements defining planform at LLE, LTE.
	NK	Code to identify configuration component
		1 = Canard
		2 = Wing
		3 = Horizontal tail

SUBROUTINES CALLED: None

### Subroutine RCALC

**PURPOSE:** To calculate a standard set of influence factors

**METHOD:** The influence factors used in the lift analysis program are a function only of the relative position of the field point element and the influencing element. RCALC is used to precalculate a standard set of influence factors for use in the program to reduce computer time associated with repeated calculations. The factors are stored in array TRSAVE.

**USE:** CALL RCALC

**INPUT:** None

**SUBROUTINES CALLED:** None

### Program FUSLGE

**PURPOSE:** To calculate upwash field of fuselage and to calculate isolated fuselage force coefficient for circular cross-section slender body solution.

**METHOD:** FUSLGE is used to calculate the wing-fuselage intersection (subroutine INTSEC), then to calculate the isolated fuselage lift distribution and force coefficients using slender body theory, and then to calculate the fuselage upwash field acting in the plane of the wing, canard, or horizontal tail.

The equations used in the fuselage lift distribution and upwash field calculations are given in the Theoretical Development document (Part 1). The fuselage forces in the presence of the wing downwash field are later repeated in subroutine FUSCF under overlay (7, 5). The upwash field of canard, wing, or horizontal tail is defined by an array of upwash values at specified chord and semispan percentages:

	Canard	Wing	Tail
% Chord	TXUPW	TXPW	TXUPW
Semispan fraction	TYCCW	TYUPW	TYHTW
Upwash angle	TUPCC	TUPWC	TUPHC
Upwash angle per deg. angle of attack	TUPCF	TUPWF	TUPHF

The upwash angle calculations are performed in subroutine UPWASH.

USE: CALL OVERLAY (ANLZ, 7, 1, 0)

INPUT: Geometry definition contained in COMMON blocks.  
MLIMIT = loop index variable from (7, 0) overlay.

SUBROUTINES CALLED: INTSEC, UPWASH

#### Subroutine INTSEC

PURPOSE: To locate wing-fuselage intersection

METHOD: If input ANYBOD is less than zero, then the analysis program is to solve for the wing-fuselage intersection in order to define the exposed and "carry-over" wing pieces. INTSEC selects each percent chord line of the wing camber surface definition and locates the intersection between wing and fuselage. The fuselage area distribution is considered to be made up of circular cross-sections in the intersection calculations. The resultant intersection is stored in common block/WBINT/, with X, Y, and Z values in arrays WX, WY, and WZ.

USE: CALL INTSECM

INPUT: Configuration geometry contained in COMMON blocks.

SUBROUTINES CALLED: TBLU1

#### Subroutine UPWASH

PURPOSE: To calculate fuselage upwash

METHOD: UPWASH calculates fuselage upwash angle in the plane of the canard, wing, or horizontal tail, using the slender body equations discussed in the Theoretical Development document (Part 1). Upwash angles are computed for a series of percent chord values at selected semispan stations.

USE: CALL UPWASH (Y, DELX, I, L)

INPUT: Configuration geometry contained in COMMON blocks, plus:

- Y semispan y station
- I span storage index for upwash array
- L variable defining component
  - 1 = canard
  - 2 = wing
  - 3 = tail

DELX distance from local leading edge at Y

SUBROUTINES CALLED: TBLUI

### Program GSBTP

**PURPOSE:** To calculate surface pressure coefficients and upwash for fuselage of arbitrary cross-sectional shape. GSBTP also writes disc files NT14 and NT15 for use in programs OUTBON (upwash value interpolation) and FUFOCO (fuselage force coefficient integration).

**METHOD:** A schematic of GSBTP and the associated programs is shown in figure 2.6-2. Program GSBTP is the principal overlay of the arbitrary fuselage cross-sectional shape program. It calls subroutine DECRD to read input (from tape NT13, written by INBONN). It then computes pressure coefficients on the surface of the fuselage (which are written on NT15) and upwash values in the plane of wing/canard/tail (which are written on NT14).

**USE:** CALL OVERLAY (ANLZ, 7, 11)

**INPUT:** Configuration geometry on NT13 read by DECRD.

**SUBROUTINES CALLED:** DECRD, AXIS, CODIX, CROSS, ZREF

### Subroutine AXIS

**PURPOSE:** To calculate geometric and surface flow characteristics for body of revolution at zero angle of attack.

**METHOD:** AXIS is used to define a 50 point description of the body geometry including first and second derivatives of the body area distribution. If the body has discontinuities in shape (located by input code), the basic geometry definitions are broken to avoid fairing across discontinuities and the associated "jump" functions computed. The calculation of the body surface velocities is performed by subroutine KARMOR, called by AXIS.

**USE:** CALL AXIS

**INPUT:** Body area distribution and discontinuity codes in COMMON blocks.

**SUBROUTINES CALLED:** CODIX, GRADNT, KARMOR

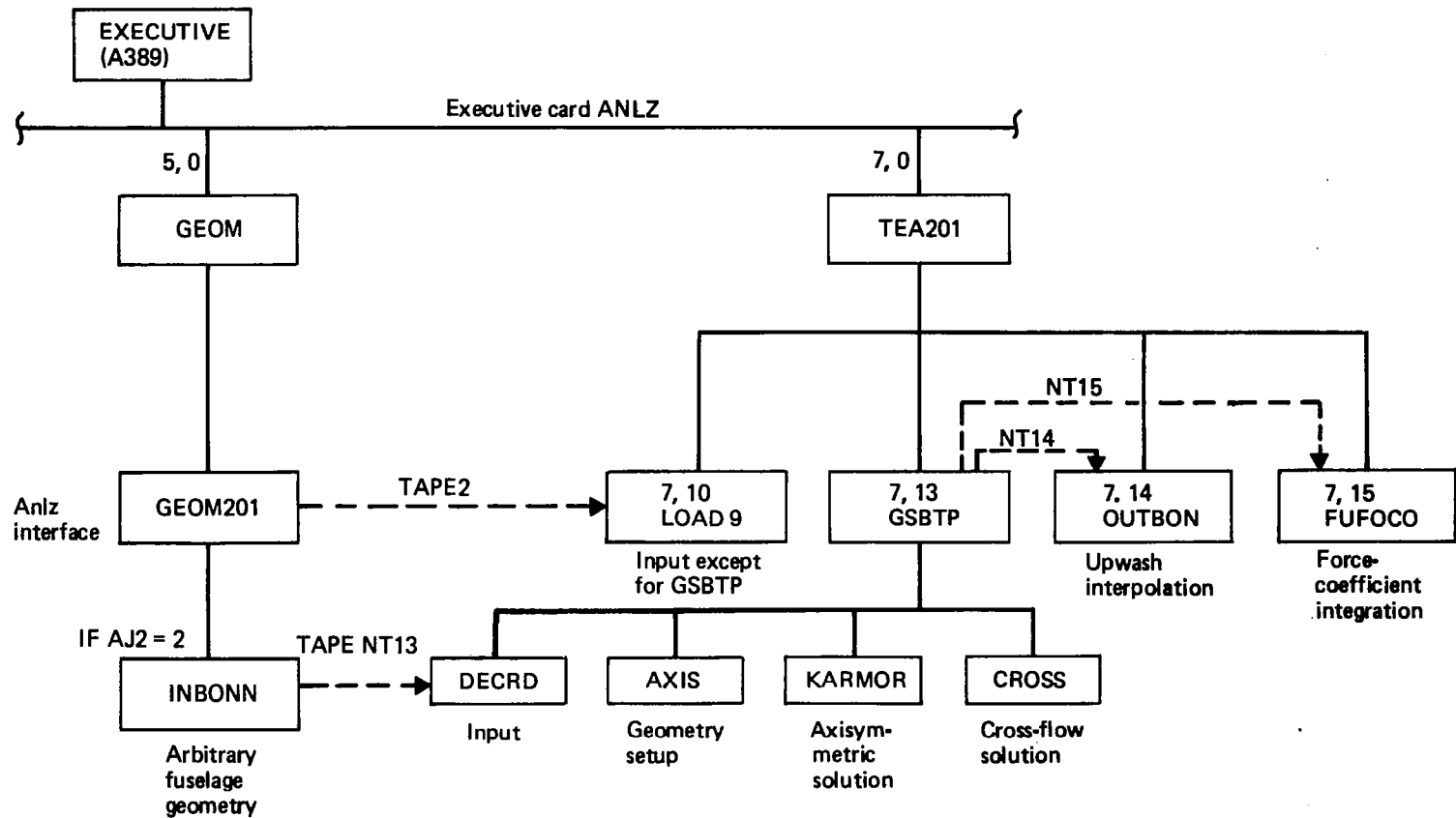


FIGURE 2.6-2.—ARBITRARY FUSELAGE SOLUTION PROGRAM STRUCTURE

### Subroutine KARMOR

PURPOSE: To calculate and print surface velocities for equivalent body of revolution at zero angle of attack.

METHOD: KARMOR calculates body surface velocities and pressure coefficients induced by distributed line sources.

USE: CALL KARMOR

INPUT: Body geometry data in COMMON blocks

SUBROUTINES CALLED: MATOPS, SOURCE

### Subroutine SOURCE

PURPOSE: To calculate unit line source/sink influence coefficients.

METHOD: SOURCE computes the unit velocity components (u, v) for equivalent body of revolution at zero angle of attack.

USE: CALL SOURCE (J, BCI)

INPUT: J Body area point index  
BCI Boundary condition indicator  
0. approximate  
1.0 exact

Body geometry in COMMON blocks

SUBROUTINES CALLED: None

### Subroutine ZREF

PURPOSE: To calculate reference axis gradient and curvature

METHOD: ZREF uses subroutine GRADNT to compute first and second derivatives of equivalent body reference axis

USE: CALL ZREF

INPUT: Equivalent body geometry and discontinuity codes in COMMON blocks.

SUBROUTINES CALLED: GRADNT



Subroutine CROSS (LL, X)

PURPOSE: To calculate incompressible cross-flow solutions due to body cross-sectional shape and angle of attack

METHOD: Subroutine CROSS calculates the cross-flow solution for an arbitrary cross-section shape at angle of attack from the known solution for a circular cross-section by the conformal transformation procedure of Theodorsen. The perturbation velocity components are first obtained for points on the body surface, and then for field points in the plane of wing/canard/tail. Field point locations are read from tape NT13 (written by geometry interface subroutine INBONN).

USE: CALL CROSS (LL, X)

INPUT: LL Body point index  
X Body X station corresponding to LL

SUBROUTINES CALLED: CODIX, ARCSN, SECT

Subroutine ARCSN

PURPOSE: To calculate arcsin of Z/R

METHOD: Subroutine CROSS calls for  $\sin^{-1}Z/R$ , where Z/R may be slightly greater than 1.0 due to rounding errors. ARCSN checks for value of Z/R and avoids possible error.

USE: CALL ARCSN (ZED, RJ)

INPUT: ZED body ordinate  
RJ body radius

SUBROUTINES CALLED: None

Subroutine SECT (X, LL)

PURPOSE: To construct fuselage

METHOD: Subroutine SECT interpolates for the fuselage shape at small distances (DX) forward and aft of a selected fuselage X station. In the case of a nose point, tail point, or discontinuity point, the interpolation is altered to suit.

USE: CALL SECT (X, LL)

INPUT: X Body X station corresponding to LL  
LL Body point index  
Configuration geometry and discontinuity codes in  
COMMON blocks

SUBROUTINES CALLED: CODIX

#### Subroutine CODIX

PURPOSE: To interpolate one-dimensional array

METHOD: CODIX uses a weighted parabolic interpolation technique  
to define dependent variable in one-dimensional array.

USE: CALL CODIX (XI, YI, NI, T, ANS, 1)

INPUT: XI Independent variable array  
YI Dependent variable array  
NI Number of XI or YI values  
T XI value for interpolation  
ANS Interpolated value of YI

SUBROUTINES CALLED: None

#### Subroutine GRADNT

PURPOSE: To compute gradient of array

METHOD: GRADNT computes the first derivative of an input array  
(returning a derivative array) using finite difference  
techniques.

USE: CALL GRADNT (X, FX, N, DFDX)

INPUT: X Independent variable array  
FX Dependent variable array  
N Number of values in X or FX  
DFDX Derivative array

SUBROUTINES CALLED: None

#### Subroutine DECRD

PURPOSE: To read input

METHOD: DECRD obtains input from file NT13, written by geometry  
interface subroutine INBONN.  
Data are stored in array DATA.

USE: CALL DECRD (DATA)  
INPUT: DATA  
SUBROUTINES CALLED: None

#### Program OUTBON

PURPOSE: To define wing/canard/tail upwash arrays due to fuselage of arbitrary cross-section.

METHOD: OUTBON reads upwash values for the basic wing/canard/tail angle of attack and the incremental upwash per additional degree angle of attack from disk file NT14, previously written in the arbitrary fuselage slender body program GSBTP. The data read are for a series of semispan and fuselage stations. OUTBON interpolates the upwash data to arrays of constant percent chords at selected semispan values, and prints the arrays.

USE: CALL OVERLAY (ANLZ, 7, 12)  
INPUT: NT14 and configuration geometry in COMMON blocks.  
SUBROUTINES CALLED: TBLU1

#### Program FUFOCO

PURPOSE: To calculate fuselage force coefficients and longitudinal lift distribution

METHOD: FUFOCO performs the integration of surface pressure distributions (written on file NT15 by the arbitrary fuselage slender body program GSBTP) over the surface shape (written on file NT15 by geometry interface program INBONN) to calculate fuselage force coefficients. FUFOCO is used for the arbitrary fuselage solution in the same fashion as programs FUSLGE and FUSCF for the circular cross-section slender body solution.

The force coefficients are calculated for a series of angles of attack, with and without wing downwash effects included. (The code KDW controls inclusion of downwash, KDW = 1 without, KDW = 2 with.) Lift, drag, and pitching moment coefficients are output and written in COMMON blocks BODSOL, BFND, and BFORCE.

USE: CALL OVERLAY (ANLZ, 7, 13)  
INPUT: NT15 and configuration geometry in COMMON blocks  
SUBROUTINES CALLED: TBLU1

#### Program WING

PURPOSE: To calculate lifting pressure distribution on wing

METHOD: A schematic of WING is shown in figure 2.6-3.

The equations used in calculation of the wing lifting pressures are given in the Theoretical Development document (Part 1). The program scans the wing grid system from front to back (DO 470) and from the centerline to right hand wing tip (DO 450), locating field point elements on the wing or canard. When a field point element (LSTAR, NSTAR) is located, the program (DO 200) computes the upstream influence of elements located in the Mach forecone from LSTAR, NSTAR. The local pressure coefficient (CP) is then computed, with the fuselage upwash added to the local surface slope to obtain the effective element angle of attack. If the field point element is located inside the side-of-fuselage station, the element angle of attack is set to zero. (Either of the two pressure coefficient smoothing options may be used in these calculations, controlled by input variable SMOGO.) After CP is calculated, pressure limiting is applied if input LIMIT is greater than zero, using subroutine CKLIM.

After all pressure coefficients are calculated, they are smoothed (DO 630) and integrated over the configuration surface to get lift, drag, and pitching moment. At the same time, the local nacelle pressure coefficients (CPNAC) and asymmetric fuselage volume pressure coefficients (CPASYM) are superimposed. Pressure coefficients are applied to the wing slopes in the exposed wing area portion, and to the fuselage slopes interior to the side-of-fuselage station.

Corresponding calculations and summations are carried on simultaneously for the flat wing at 1 degree angle of attack. The interference drag term of flat wing pressure coefficients on the cambered wing slopes is also computed. Separate summations carry the nacelle drag, lift, and pitching moment and the configuration streamwise and spanwise lift distributions.

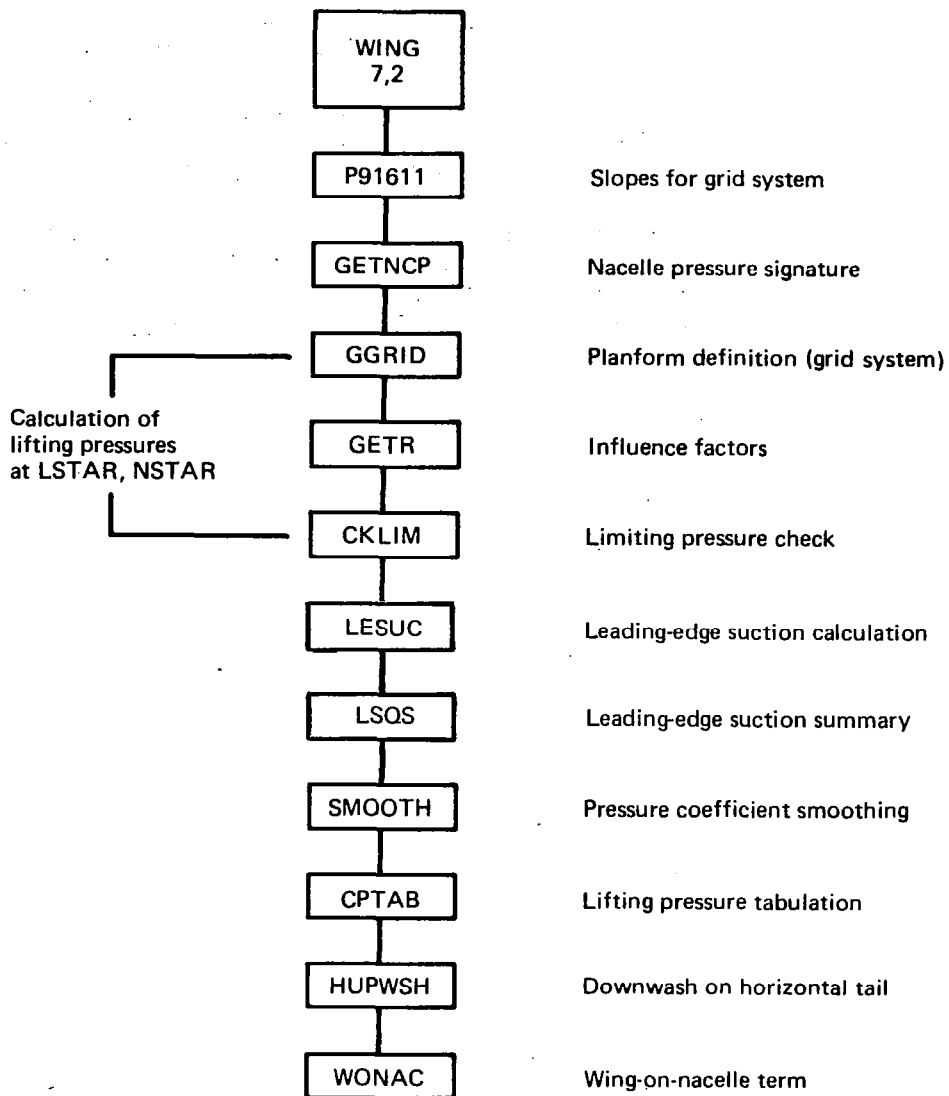


FIGURE 2.6-3.—PROGRAM WING SCHEMATIC

If leading edge suction calculations are requested, subroutine LESUC is called to perform the calculations.

The wing pressure coefficient arrays (TWCP and TWCPF) are then interpolated over the wing planform for the output pressure summary (subroutine CPTAB).

The downwash due to the wing acting in the plane of the horizontal tail is then computed in subroutine HUPWSH. The effect of the wing lifting pressures acting on the nacelle area distribution is computed in subroutine WONAC.

Program WING is called by two loops in the 7, 0 level: the canard angle of attack loop and the pressure limiting angle of attack loop. Both result in changes to the local angle of attack distribution that cannot be handled by superposition.

USE: CALL OVERLAY (ANLZ, 7, 2, 0)  
INPUT: Configuration data in COMMON blocks.  
SUBROUTINES CALLED: See schematic, figure 2.6-3.

#### Subroutine CKLIM

PURPOSE: Checks to see if calculated pressure coefficients violate limiting pressure coefficient.

METHOD: The sum of the wing upper surface lifting pressure coefficient (-.5 times calculated lifting pressure coefficient) plus the wing thickness pressure plus the fuselage pressure acting on the wing upper surface is checked against the limiting pressure coefficient. If the summed value, CPCHK, is more negative than the limit, the computed value is reset. If input VACFR is negative, the thickness pressures are not included in pressure check.

USE: CALL CKLIM (YFR, XPC, CP, CPLIMT, PTEST, CPT)

INPUT: Pressure coefficient arrays in COMMON blocks, plus:

YFR semispan wing station  
XPC percent chord  
CP calculated lifting pressure coefficient  
CPLIMT limiting upper surface pressure coefficient  
PTEST indicator variable showing limiting application  
CPT thickness pressure coefficient  
VACFR fraction of vacuum pressure coefficient

SUBROUTINES CALLED: DUBINT

### Subroutine CPTAB

**PURPOSE:** To interpolate wing pressure arrays for output

**METHOD:** The wing lifting pressure distributions for the grid system are computed in WING. CPTAB is used to interpolate the grid pressure distributions for each semispan row at selected percent chord values. The interpolated pressure coefficients are stored in arrays VAR (basic angle of attack) and VAR1 (flat plate solution per degree alpha).

**USE:** CALL CPTAB

**INPUT:** Configuration data and pressure coefficients in COMMON blocks.

**SUBROUTINES CALLED:** GGRID, TBLU1

### Subroutine GETNCP

**PURPOSE:** To interpolate a nacelle pressure signature at a given wing semispan station, for use in calculating nacelle-on-wing interference drag.

**METHOD:** Same as described for subroutine GETNCP for the near-field wave drag program.

**USE:** CALL GETNCP (YB2)

**INPUT:** YB2 wing semispan fraction

**SUBROUTINES CALLED:** None

### Subroutine GETUP

**PURPOSE:** To perform double interpolation for fuselage upwash angle

**METHOD:** GETUP double-interpolates linearly for fuselage upwash angle in arrays TUPWC (upwash at basic fuselage incidence) and TUPWF (upwash per degree fuselage alpha).

**USE:** CALL GETUP (XPC, YFR, UPC, UPF)

**INPUT:** XPC percent chord  
YFR semispan fraction  
UPC, UPF upwash angles, radians

SUBROUTINES CALLED: None

### Subroutine LESUC

PURPOSE: To perform wing leading edge suction calculations

METHOD: LESUC calculates the theoretical leading edge suction distribution (if requested by code XESUC) according to the equations given in the theory document. LESUC further calculates the attainable leading edge suction values if requested by input code ATTLE.

The program first calculates planform and airfoil geometric data needed in the suction calculations. The leading edge suction computations then follow in three principal steps:

- Definition of the X shift values described in reference 6.
- Calculation of the theoretical and attainable thrust coefficients for a series of wing angles of attack. These are further resolved into lift and drag components to be included in the wing force coefficients (in subroutine SUMIZ).
- Interpolation of wing lifting pressure summaries to be printed later (in FINISH). When leading edge suction calculations are performed, these summaries replace the ones normally performed by subroutine CPTAB.

USE: CALL LESUC

INPUT: Wing geometric and pressure data in COMMON blocks.

SUBROUTINES CALLED: GGRID

### Subroutine LSQS

PURPOSE: To summarize wing leading edge thrust distribution.

METHOD: Wing leading edge thrust data calculated in subroutine LESUC are passed to LSQS in common blocks. For the theoretical suction distribution, local suction coefficients based on average wing chord are printed versus semispan fraction for a representative series of angles of attack, and also summed to get total wing theoretical suction coefficients.



If the attainable thrust calculations have been performed in LESUC, the attainable thrust factors,  $K_T$  (described in the theory document) are also printed for the same set of semispan and angle of attack values.

USE: CALL LSQS

INPUT: Wing leading edge suction data in COMMON blocks LETHR and LETHR2.

SUBROUTINES CALLED: None

#### Subroutine HUPWSH

PURPOSE: To compute downwash at tail

METHOD: HUPWSH is used to compute the local downwash acting along the fuselage centerline and in the plane of the horizontal tail. The fuselage asymmetric lifting pressure distribution (if any) is included in the wing lifting pressure definition.

The computed downwash is stored in arrays TWT (basic angle of attack) and TWTF (per degree) for the horizontal tail. Downwash from the canard (if any) is contained in arrays CT and CTF and is added in loop DO 149. Fuselage downwash is stored in arrays BX (fuselage length fraction), BCC (downwash angle for basic angle of attack) and BCF (per degree).

The wing downwash can be shifted laterally to allow for fuselage closure effects, controlled by inputs FWSH and DYWH.

USE: CALL HUPWSH

INPUT: Configuration geometry and pressure distributions in common blocks

FWSH wing downwash shift indication (1. = shift, 0. = no shift)

DYWH downwash shift distance (Y)  
(0. = use of basic geometry side-of-fuselage increment.)

SUBROUTINES CALLED: GGRID, GETR, DUBINT, TBLU1

### Subroutine P91611

**PURPOSE:** To calculate local wing slopes for grid system

**METHOD:** Subroutine P91611 interpolates the wing camber surface definition for the streamwise slopes of the wing grid system. Interpolation is linear spanwise along constant percent chord lines, followed by quadratic chordwise. The resultant slopes are stored in array TDZDX.

If the wing twist tables or trailing edge flaps are input, the slopes are incremented by the appropriate slopes. Also, the grid element array containing the wing-fuselage intersection (INTN) is identified together with the corresponding fractional element (TNFR).

If the configuration angle of attack is not zero, as may be the case with limiting pressure calculations, all slopes are incremented by alpha.

If input WHUP = 1.0, the camber surface slopes are all zeroed. (This feature is used to generate the wing loading due to fuselage upwash only.)

**USE:** CALL P91611

**INPUT:** Configuration geometry contained in COMMON blocks

**SUBROUTINES CALLED:** GGRID, TBLU1

### Subroutine SMOOTH

**PURPOSE:** To smooth wing pressure coefficients and sum wing area

**METHOD:** SMOOTH is called by program WING after all wing pressure coefficients have been calculated, to remove irregularities in the calculated values. Either a 9 point or 3 point smoothing equation is applied, depending upon the wing pressure calculation technique used (discussed in the Theoretical Development document, Part 1). The wing area is also calculated, by summing the areas of the individual elements.

**USE:** CALL SMOOTH (AREA9, SMOGO)

INPUT: Configuration data contained in COMMON blocks /SMOTH/, /INDEX/, and pressure data in /PCOEF/.

AREA 9 (wing area of right hand wing) \*  $\sqrt{M^2 - 1}$ .  
SMOGO Smoothing technique code  
0. = 9 term smoothing  
1. = 3 term smoothing

SUBROUTINES CALLED: None

#### Subroutine WONAC

PURPOSE: To calculate drag of wing lifting pressures acting on nacelle area distribution.

METHOD: WONAC is used to compute the thrust or drag force due to the wing lifting pressures acting on the nacelle cross-sectional distribution. For this calculation, the lifting pressure is broken into upper and lower surface halves and the proper half used depending upon whether the nacelles are above or below the wing. The pressures are transferred aft along Mach lines from the wing to elemental frustum describing the nacelle shape.

USE: CALL WONAC

INPUT: Configuration geometry and wing pressure field contained in COMMON blocks.

SUBROUTINES CALLED: GGRID, TBLU1

#### Program PUTOUT

PURPOSE: To print input data.

METHOD: PUTOUT is used to write the input and pertinent program data onto the output file.

USE: CALL OVERLAY (ANLZ, 7, 3, 0)

INPUT: Configuration geometry in COMMON blocks.

SUBROUTINES CALLED: None

Program KANARD

PURPOSE: To calculate canard lifting pressures.

METHOD: Program KANARD calculates the canard lifting pressure distribution according to the same logic used for the wing lifting pressures.

USE: CALL OVERLAY (ANLZ, 7, 10, 0)

INPUT: DZDXC canard angle of attack, radians  
Configuration data in COMMON blocks.

SUBROUTINES CALLED: GGRID, GETR, DUBINT, CANPRES, CONW

Subroutine CANPRES

PURPOSE: To sum pressure distributions over canard for lift, drag, and pitching moment.

METHOD: The canard pressure distributions are calculated in program WING, and stored in arrays TCCP (at input canard alpha) and TCCPF (per degree alpha). CANPRES integrates these to get lift, drag, and pitching moment. Drag is computed by applying the lifting pressure to the exposed canard slopes or the fuselage slopes, as appropriate.

USE: CALL CANPRES

INPUT: Configuration data in COMMON blocks.

SUBROUTINES CALLED: GGRID, TBLU1

Subroutine CONW

PURPOSE: To calculate downwash from canard on wing, fuselage, and tail.

METHOD: Subroutine CONW sums the downwash of the canard on fuselage, wing, or tail, using the same influence logic as the basic canard or wing solution. The resulting downwash arrays are:

	Influence at basic angle of attack	Influence per degree alpha
Fuselage	FCC	FCCF
Wing	TCW	TCWF
Hor. Tail	TCT	TCTF

The downwash field can be shifted laterally to follow the side of the fuselage, controlled by program input.

USE: CALL CONW

INPUT: TCCP canard pressure array (basic angle of attack)  
TCCPF canard pressure array per degree alpha  
FCSH code to shift canard downwash  
(1. = shift, 0. = no shift)  
DYCW downwash shift magnitude at wing  
(0. = use basic geometry distance from canard  
root to wing root)  
DYCH downwash shift magnitude at tail  
(0. = use basic geometry distance from canard  
root to tail root).

SUBROUTINES CALLED: GGRID, GETR, TBLU1

#### Program NACPF

PURPOSE: To calculate pressure fields acting on the wing due to nacelles and asymmetric fuselage volume.

METHOD: This overlay calculates the pressure fields due to nacelles and asymmetric fuselage volume acting on the wing. A schematic of the overlay is given in figure 2.6-4.

The program initially calculates the asymmetric fuselage pressure distribution by calling subroutines SEGRT and SPLIT, using the fuselage representation described in the Theoretical Development document, Part 1.

The nacelle pressure field is next calculated. A series of semispan Y stations are selected, and the composite pressure signature due to all nacelles is computed; first for all nacelles below the wing, then for all nacelles above the wing. If there are nacelles both above and below the wing, a single nacelle lifting pressure definition is calculated in subroutine COMBINE.

The basic program format is the same as the NACPF subroutine described in the near-field wave drag program, except that the nacelle and fuselage interference terms are not computed in the analysis program version. In addition, there is an optional feature in the analysis program version to permit calculation of the nacelle pressure field at a Mach number other than free stream (to account for local

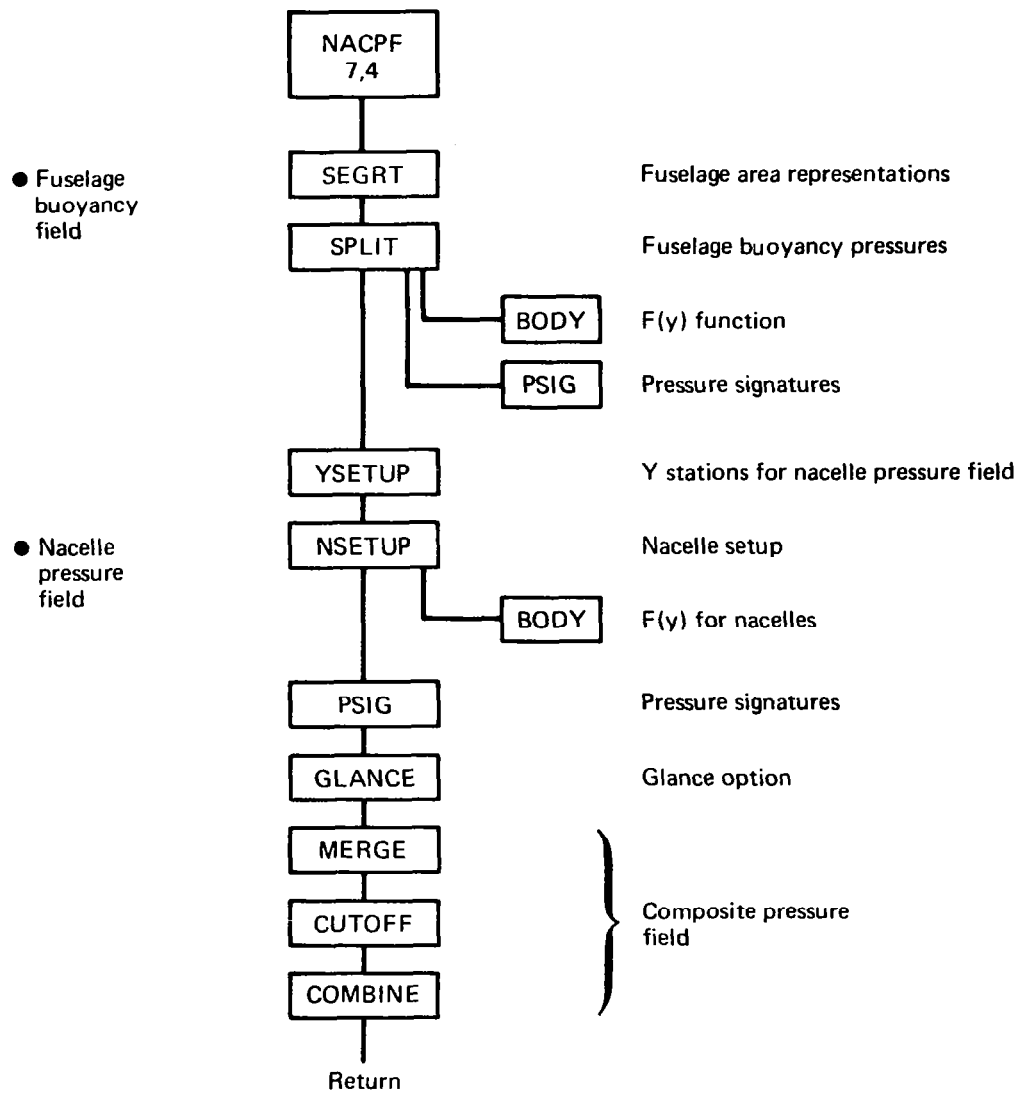


FIGURE 2.6-4.—PROGRAM NACPF SCHEMATIC

Mach number effects, using input TMLOC). The resulting pressure field is afterwards referenced to free stream dynamic pressure.

The following subroutines associated with NACPF are the same as those previously described in the near-field wave drag program: COMBINE, CUTOFF, GLANCE, INTPLT, MERGE, NSETUP, ORDER, PSIG. (Slightly different name for near field program to avoid duplicate subroutine names).

USE: CALL OVERLAY (ANLZ, 7, 4, 0)

INPUT: Configuration geometry, Mach number contained in COMMON blocks.

SUBROUTINES CALLED: See schematic, figure 2.6-4.

#### Subroutine BODY

PURPOSE: To calculate Whitham  $F(Y)$  function for body of revolution.

METHOD: Subroutine BODY is the same as the previously described NBODY subroutine in the near-field wave drag module, with one additional provision:

- 1) It will compute the  $F(Y)$  function using the "smooth body" form of the  $F(Y)$  equation discussed in reference 4, in addition to the Stieltjes integral equation. This provision is controlled by input FYLB in the calling statement. (FYLB less than zero uses smooth body equation.)
- 2) Linear interpolation may be used (instead of quadratic) in fairing the body radius distribution. This provision is selected if FYLB is less than zero or greater than 9.0.

USE: CALL BODY (TXB, TRB, TNXB, TNCUT, TTAU, TFTAU, JSTO, FYLB, SWET)

INPUT: TXB, Input body X stations and radius values,  
TRB TNXB of each.

TNTCUT Number of body intervals in  $F(Y)$  function.  
TTAU, Y and  $F(Y)$  function calculated for body,  
TFTAU, JSTO values of each  
JSTO

FYLB Calculation method code (see above).  
SWET Wetted area

SUBROUTINES USED: TBLU1

#### Subroutine SEGRT

PURPOSE: To set up area representations for below-wing and above-wing fuselage areas.

METHOD: The logic of the below-wing and above-wing fuselage area representations is described in the Theoretical Development document (Part 1). Subroutine SEGRT computes these area distributions using the wing-body intersection definition found in INTSEC. The fuselage is considered circular in the calculation of the two area distributions, resulting in:

TRABV above-wing radius distribution  
TRBLOW below-wing radius distribution

Alternatively, SEGRT may use input values of fuselage areas (if SYMM = 2.0).

USE: CALL SEGRT

SUBROUTINES CALLED: None

#### Subroutine SPLIT

PURPOSE: To calculate asymmetric fuselage volume pressure field.

METHOD: Subroutine SPLIT is used to calculate the fuselage pressure field acting on the wing, according to input SYMM. If SYMM = 0., the configuration is considered to be mid-wing, and the input fuselage definition is used to calculate a symmetric (non-lifting) fuselage thickness pressure field. If SYMM = 1.0, the above-wing and below-wing fuselage area representations obtained in SEGRT are used to calculate the respective pressure fields acting on the wing.

Pressure signatures due to the fuselage are calculated at the same X and Y stations used for the fuselage upwash field. The resultant fuselage volume pressure field is stored in common block/CPBASM/:



RXUPW percent chord array  
RYUPW semispan percentages  
PABOVE pressure coefficients above wing  
PBELOW pressure coefficients below wing

USE: CALL SPLIT

INPUT: Configuration geometry contained in COMMON block.

SYMM calculation code

SUBROUTINES CALLED: BODY, PSIG, TBLU1

#### Subroutine YSETUP

PURPOSE: To set up Y array for nacelle pressure field definition.

METHOD: YSETUP sets up a series of Y stations located at each 5 percent semispan, plus extra stations located immediately inboard and outboard of each nacelle centerline. Subroutine ORDER is used to store the array (TYP) in monotonically increasing fashion.

USE: CALL YSETUP

INPUT: Configuration geometry contained in COMMON blocks.

SUBROUTINES called: ORDER

#### Program FINISH

PURPOSE: To compute fuselage forces in presence of wing downwash field, add in contribution of horizontal tail, and write out complete configuration force coefficient summaries.

METHOD: The wing/canard lifting pressure distribution and force coefficients are computed in program WING. Summary data from WING are passed to FINISH by common blocks, where the fuselage contribution in the wing/canard downwash field is calculated (subroutine FUSCF), and the direct effects of the canard are added in. All coefficients are based on input reference geometry.

A calculation loop (DO 140) then calculates the contribution of the horizontal tail at various input incidences (in subroutine HTPART), and adds it to the wing-fuselage-canard data.

A summary of the configuration force coefficients, nacelle-on and nacelle-off, is then computed and printed. This includes lift (XCL), drag (STOT and SCDN), and pitching moment (CMA and CMB) coefficients. Corresponding coefficients for the flat wing configuration are printed for reference.

The streamwise lift distribution is then summed and printed (subroutine STRMWZ). If wing lifting pressure coefficients at specified lift coefficients were requested, these are then calculated and printed. Finally, the wing-canard spanwise lift distribution is printed.

USE: CALL OVERLAY (ANLZ, 7, 5, 0)  
INPUT: Configuration data in COMMON blocks  
SUBROUTINES CALLED: FSCF, SUMIZ, HTPART, STRMWZ

#### Subroutine HTPART

PURPOSE: To calculate the horizontal tail lifting pressure distribution and force coefficients.

METHOD: Subroutine HTPART is used to compute lifting pressure distributions on the tail in the presence of wing-canard downwash. The equations used are the same as those employed for the wing; the tail is broken into exposed and fuselage-carry-over portions, and fuselage upwash and wing downwash added to tail alpha for the purposes of computing lifting coefficients.

The lifting pressure distributions are summed over the tail planform to get tail force coefficients, which are then added to the force coefficients of the rest of the configuration. These are passed back to FINISH in COMMON blocks.

USE: CALL HTPART (NH, REFAR)  
INPUT: NH Tail incidence loop index  
REFAR Reference area in program units  
SUBROUTINES CALLED: GGRID, GETR, DUBINT, TBLU1

### Subroutine STRMWZ

**PURPOSE:** To sum and print streamwise lift distribution

**METHOD** In STRMWZ, the streamwise lift distributions due to wing/canard, nacelles, fuselage, and horizontal tail are summed together and printed. The presentation is in fraction of total lift coefficient, so that the final number printed for the complete configuration is 1.0.

**USE:** CALL STRMWZ (REFAR, SCLN9)

**INPUT:** REFAR Reference area in program units  
SCLN9 Total lift coefficient

**SUBROUTINES CALLED:** TBLU1

### Subroutine SUMIZ

**PURPOSE:** To summarize and print configuration force coefficients.

**METHOD:** The configuration force coefficients, including the interference drag terms, are summarized for program FINISH in subroutine SUMIZ.

**USE:** CALL SUMIZ (N)

**INPUT** N Index variable to identify printout series  
0 = Drag polars with leading edge suction included  
1 = Wing  
2 = Wing + fuselage  
3 = Wing + fuselage + canard

**SUBROUTINES CALLED:** None

### Subroutine FUSCF

**PURPOSE:** To calculate force coefficients of fuselage in presence of wing downwash field.

**METHOD:** FUSCF repeats the slender body fuselage lift calculations of program FUSLGE, adding the wing downwash field computed in HUPWSH to the basic fuselage angle of attack. The fuselage is broken into segments and the equations given in the Theoretical Development document (Part 1) are used to calculate the fuselage lift. Fuselage drag is computed by applying the fuselage lift distribution to the local mean-line slopes.

Lift for the fuselage at basic incidence and the corresponding incremental (flat) fuselage at one degree angle of attack, plus interference drag terms, are all calculated. The results are stored in COMMON blocks /BODSOL/ and /BFND/:

TBDLC	basic incidence streamwise lift
TBDLF	flat body streamwise lift (1° alpha)
CLCND, CLFND	lift coefficients of basic and flat solutions
CDCND, CDFND	drag coefficients
CMCND, CMFND	pitching moment coefficients

Data for the isolated fuselage solution (no wing downwash) are also printed for reference.

USE: CALL FUSCF

INPUT: Configuration geometry contained in COMMON blocks. Isolated fuselage force data in /BODSOL/.

SUBROUTINES CALLED: TBLU1

#### Program LOAD9

PURPOSE: To read input data for lift analysis module.

METHOD: Program LOAD9 reads input data (interface tape written by analysis subprogram of geometry module).

USE: CALL OVERLAY (ANLZ, 7, 8, 0)

INPUT: See User's Manual

SUBROUTINES CALLED: None

#### Program TRNSFM9

PURPOSE: To convert input data to program units and set up grid system.

METHOD: The wing, canard, and horizontal tail planforms are represented in the analysis program as a set of rectilinear elements, as described in the Theoretical Development document (Part 1). Given the number of semispan element rows (FNON) used to define the right-hand wing, TRNSFM9 interpolates the wing planform

definition at the mid-point of each semispan row for leading edge and trailing edge X-value. These X values are converted to program scale (by means of  $RATIO = y$  wing tip  $x$   $BETA/FNON$ ) and stored in arrays TXLE and TXTE, with XLEO and XTEO defining the wing centerline grid points.

Storage of wing pressure coefficients and surface slopes uses a space-conserving technique: The leading edge of a spanwise row is stored immediately after the trailing edge of the adjacent inboard row. The index array for the row storage is JZW, which gives the number of elements stored ahead of the leading edge of a selected row. The same storage arrangement is used for canard and horizontal tail, based on indices JZC and JZH.

The factor RATIO is also used to scale the canard and horizontal tail arrays, as follows:

	Canard	Tail
Leading edge array	TCXLE	THXLE
Trailing edge array	TCXTE	THXTE
Centerline leading edge	CXLEO	HXLEO
Centerline trailing edge	CXTEO	HXTEO

The maximum size of the pressure coefficient arrays for the right hand wing is 2500 for the wing, 200 for the canard, and 500 for the horizontal tail. Also, the maximum X dimension of the configuration, to the most aft point on the wing, is 205 (program units). If any of these dimensions are exceeded, TRNSFM rescales the program units by reducing FNON.

TRNSFM9 is also used to identify the grid elements associated with trailing edge flaps. Since the flap edges will usually not coincide with element edges, an approximate element array is used to represent the flaps and the input flap deflection angles are altered such that the product of flap area times deflection is the same for the input and the approximate program definition. The input flap area is computed in subroutine PHLAP.

USE: CALL OVERLAY (ANLZ, 7, 9, 0)

INPUT: Configuration geometry read in program LOAD9

SUBROUTINES CALLED: PHLAP, GGRID, TBLU1

## 2.7 Wing Pressure Summary Module

The wing pressure summary program is primary overlay 12, called by executive card WPLT. It contains secondary overlays to:

- Read wing pressure data from disk files into core
- Write component pressure data onto the output file or disk file NT20.

Wing pressure data are interpolated and summarized at specified planform locations and written onto the output file and disk file NT19. A schematic of the wing pressure summary programs is shown in figure 2.7-1.

### Program PPLOT

PURPOSE: PPLOT is the primary overlay of WPLT.

METHOD: It calls overlays to read and print the basic wing data, and then interpolates the data for specified angle of attack or lift coefficient values, writing the resulting pressure coefficients onto the output file and NT19.

Linear interpolation and summation of the basic pressure data is performed to get  $C_p$  at specified  $C_L$  or angle of attack. Which component pressure data are to be included in the summations are specified in the input. Format of the NT19 file is given in the User's Manual.

USE: CALL OVERLAY (A389, 12, 0)

INPUT: Data in COMMON blocks.

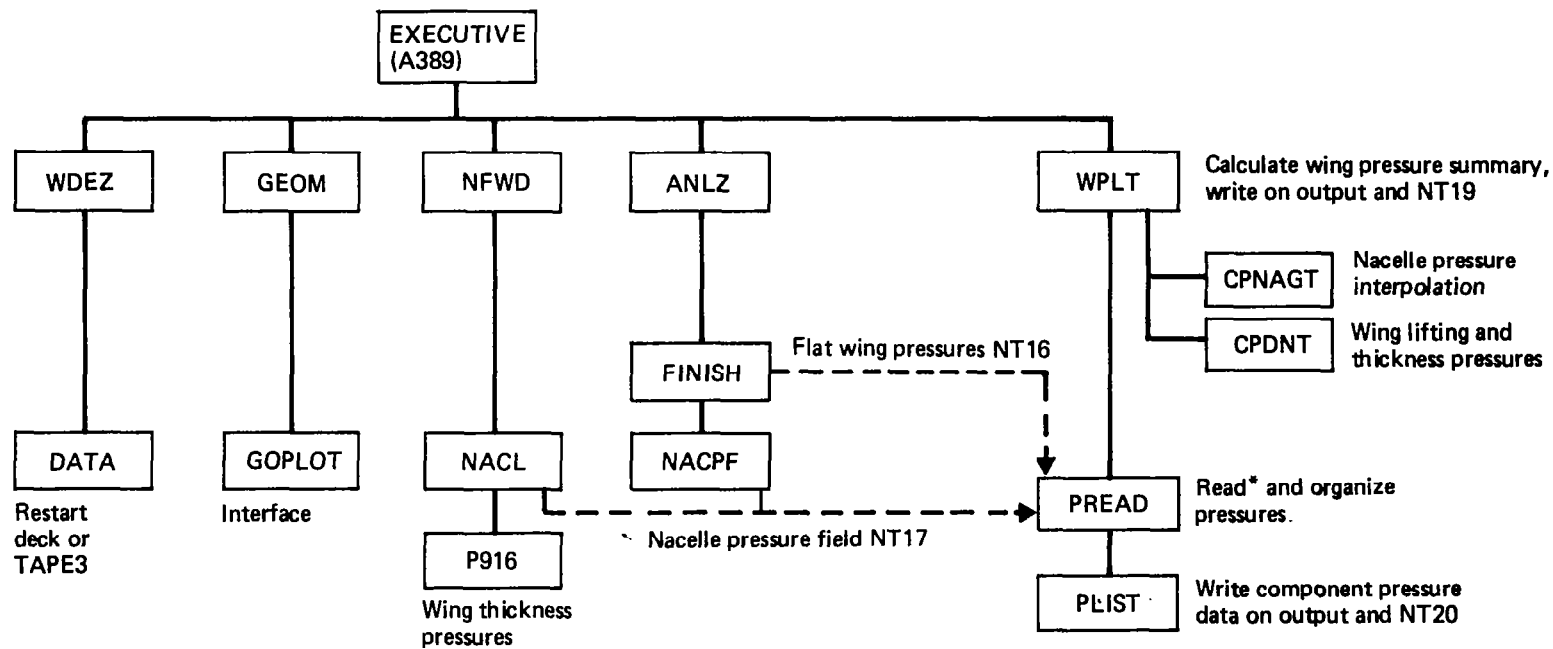
SUBROUTINES CALLED: CPDNT, CPNAGT

### Program PREAD

PURPOSE: To read input data

METHOD: PREAD is the input overlay of the wing pressure program. It reads planform geometry, component selection and lift condition data from the geometry interface program (GOPLT), and reads and organizes the component pressure data from disc files or COMMON blocks.

USE: CALL OVERLAY (WPLT, 12, 1)



\*Source of pressure data from common blocks:

/PLIM/ Wing thickness pressures  
 /CPBASM/ Fuselage thickness pressure field  
 /CPBUPW1/ Wing lifting pressures at basic alpha  
 /NACCP/ Nacelle pressure field

FIGURE 2.7-1.—WING PRESSURE SUMMARY SCHEMATIC

INPUT: Data from interface tape (TAPE2), pressure data from COMMON blocks and files NT16 and NT17.

SUBROUTINES CALLED: None

#### Program PLIST

PURPOSE: To write input and component pressure data onto output and NT20.

METHOD: PLIST is the basic data output overlay of the wing pressure module. It prints wing planform data and the component pressure fields on the output file and disk file NT20.

USE: CALL OVERLAY (WPLT, 12, 2)

INPUT: Data in COMMON blocks

SUBROUTINES CALLED: TBLU1

#### Subroutine CPNAGT

PURPOSE: To interpolate nacelle pressure field

METHOD: CPNAGT performs double interpolation to define a pressure signature at a selected spanwise station (if code NGEN = 1). It then interpolates this spanwise signature for nacelle  $C_p$  at a selected X value (if NGEN = 0). Nacelle pressure fields above and below wing are interpolated separately.

USE: CALL CPNAGT (YPC, XPC, CPNB, CPNA, NGEN)

INPUT: YPC Percent semispan  
XPC Percent chord  
CPNB Nacelle  $C_p$  below-wing  
CPNA Nacelle  $C_p$  above-wing  
NGEN Interpolation code

Nacelle pressure fields in COMMON blocks

SUBROUTINES CALLED: TBLU1



### Subroutine CPDNT

PURPOSE: To integrate lifting pressure or thickness pressure arrays

METHOD: CPDNT performs double linear interpolation for pressure coefficient from two-dimensional arrays

USE: CALL CPDNT (XFR, YFR, RX, RY, RCP, NX, NY, MX, MY, CP)

INPUT: XFR chord fraction  
YFR semispan fraction  
RX chord array  
RY semispan array  
RCP pressure coefficient array  
NX number of values used in RX array  
NY number of values used in RY array  
MX dimension of RX array  
MY dimension of RY array  
CP interpolated  $C_p$  value

SUBROUTINES CALLED: None



## APPENDIX

### INTERACTIVE GRAPHICS SUBROUTINES

The graphics subroutines in the design and analysis program are described in this appendix, except for the LRC standard CRT software routines.

Three general purpose subroutines are described first, followed by the subroutines associated with the individual modules:

#### Subroutine CSCALE

**PURPOSE:** Computes a plot origin and scale factor given an array of values,

**METHOD:** If the values in the input array are not equal, LRC subroutine ASCALE is called to compute an origin and scale factor. If the values in the input array are equal, the origin is set to that value  $-.5$ , and the scale factor is set to  $2.0/\text{length}$  over which the data is plotted.

**USE:** CALL CSCALE (ARRAY, S,N,K,DV)

**INPUT:** ARRAY = Array of data to be scaled.  
S = Length over which data will be plotted.  
N = Number of values in ARRAY.  
K = Interleave factor. (1=all points).  
DV = Number of divisions per inch of paper.

**OUTPUT:** ARRAY (NxK+1) = Plot origin  
ARRAY (NxK+1+K) = Plot scale factor

**SUBROUTINES CALLED:** ASCALE

#### Subroutine SHOW Entry SHOWI

**PURPOSE:** To display an array of floating point values on the CDC250.

**METHOD:** LRC subroutines NOTATE and NUMBER are called to display a variable name, equal sign and a number of values on the same line. When the display line is complete, the vertical coordinate of the line is decremented by a preset value. Alternate entry point SHOW I is used for integer values.

USE: CALL SHOW (A,N,BCD,NC)  
CALL SHOWI (L,N,BCD,NC)

INPUT: A Floating point variable or array  
L Integer variable or array  
N Number of values to display  
BCD Hollerith label preceding the first value  
NC Number of characters in BCD  
COMMON/PBLOK/  
YORG Y coordinate of display line  
XORG X coordinate of first value to display.  
If values to be displayed are negative, the negative sign will be positioned at VORG-CS, VORG+VDEL-CS and VORG+VDEL+VDEL-CS.  
YDEL Vertical distance between lines  
VDEL Horizontal distance between values  
CH Character height  
CS Spacing between characters (6/7xCS)  
THETA Angle of display for label and values  
ND Number of decimal places to display

OUTPUT: COMMON/PBLOK/  
XORG = Coordinate of first character BCD

SUBROUTINES CALLED: NOTATE,NUMBER

EXAMPLE: R( 1 ) = 1.25      -3.79      5.86  
R( 4 ) = 6.73      9.50      -3.17

### Subroutine SHOW3

PURPOSE: To display a label and three floating point variables on the CDC 250.

METHOD: LRC subroutines NOTATE and NUMBER are called to display a hollerith label and three values on the same display line. When the line has been displayed, the vertical coordinate of the line is decremented by a preset value.

USE: CALL SHOW3 (V1, V2, V3, BCD)

INPUT: V1 = First variable to display  
V2 = Second variable to display  
V3 = Third variable to display  
BCD = Hollerith label (10 character maximum)

COMMON/PBLOK/

XORG = X coordinate of label  
YORG = Y coordinate of display line  
VORG = X coordinate of V1  
VDEL = X distance between variables  
If negative, the variables are displayed at,  
the VORG-CS, VORG+VDEL-CS and  
VORG+VDEL+VDEL-CS  
YDEL = Y distance between display lines.  
CH = Character height  
CS = Spacing between characters (6/7xCH)  
THETA = Angle of display for label and variables  
ND = Number of decimal places to display.

SUBROUTINES CALLED: NOTATE, NUMBER

EXAMPLE:           NAC1   -57.254        9.000            5.790  
                  NAC2    69.874       16.785           -9.103

GEOMETRY MODULE

Configuration geometry is displayed and/or edited by program DISGEOM, a secondary overlay in the geometry module.

Program DISGEOM

PURPOSE:           To display and/or edit configuration geometry  
METHOD:            A description of the display capability is presented in  
                  the Appendix of the User's Manual.  
USE:                CALL OVERLAY (GEOM, 5, 5, 0)

Subroutine ALTER

PURPOSE:           To alter the wing camber surface shape to match a new  
                  trailing edge definition.  
METHOD:            The camber definition at each input airfoil is rotated  
                  about the airfoil leading edge point until the trailing  
                  edge point coincides with the new trailing edge  
                  definition. The new camber surface definition is  
                  stored in temporary array BZORD.

USE: CALL ALTER (ZTE)

INPUT: ZTE = Array of new trailing edge values,

COMMON/TEMP/  
 LECODE = +, ZTE array consists of camber values  
 LECODE = -, ZTE array consists of camber values  
 + the Z value of the leading edge

COMMON/WING/  
 TZORD = Original camber definition

OUTPUT: COMMON/TEMP/  
 BZORD = Altered camber definition

### Subroutine PLTSIZ

PURPOSE: To compute the configuration minimum and maximum X and Y coordinates, and the fuselage minimum and maximum Z coordinates. A plot scale factor is also output.

METHOD: Each configuration component is analyzed as to its coordinate values. The minimum and maximum values are stored in common. If the range of data in the X direction is greater than that in Y, SCALE is computed as:

$$\frac{XMAX-XMIN}{10.0}$$

If the range of data in the Y direction is greater than that in X, SCALE is computed as:

$$\frac{YMAX-YMIN}{7.0}$$

USE: CALL PLTSIZ (SCALE)

INPUT: All configuration geometry in COMMON.

OUTPUT: SCALE = plot scale factor  
 COMMON/NVL1/  
 XMIN = Minimum X value of configuration  
 XMAX = Maximum X value of configuration  
 YMIN = Minimum Y value of configuration  
 YMAX = Maximum Y value of configuration  
 ZMIN = Minimum Z value of fuselage  
 ZMAX = Maximum Z value of fuselage

## FAR-FIELD WAVE DRAG MODULE

The graphics subroutine (DIS080) in the far-field wave drag module is located in program OUT, overlay (FFWD,3,6).

### Subroutine OUT

**PURPOSE:** To display area plots and drag summary

**METHOD:** The CRT is used to display far-field wave drag module results as described in the Appendix of the User's Manual.

**USE:** CALL DIS080 (S, B, B0, C, RC, N)

**INPUT:**

S	Array of X values
B	Array of fuselage areas
B0	Array of optimum fuselage areas
C	Array of overall configuration areas
RC	Array of restrained areas
N	Number of values in input arrays

## NEAR-FIELD WAVE DRAG MODULE

The graphics program (DISP916) is called from the primary level of the near-field wave drag overlay.

### Program DISP916

**PURPOSE:** To display near-field wave drag module results

**METHOD:** DISP916 displays summary results described in the Appendix of the User's Manual.

**USE:** CALL OVERLAY (NFWD, 6, 3, 0)

**INPUT:** Summary data in common blocks

## SKIN FRICTION DRAG MODULE

The graphics subroutine (DISP158) in the skin friction module is called from subroutine DRAG.

### Subroutine DISP158

PURPOSE: To display skin friction module results

METHOD: DISP158 displays summary results described in the Appendix of the User's Manual.

USE: CALL DISP158

INPUT: Summary data in common blocks

### WING DESIGN MODULE

Display and editing in the wing design module is performed by three graphics programs called from the primary overlay.

#### Program BUCKETP

PURPOSE: To display drag-due-to-lift bucket plot

METHOD: BUCKETP is used to display the  $K_E$  versus  $C_{mo}$  plot plus design point solutions described in the Appendix of the User's Manual.

USE: CALL OVERLAY (WDEZ, 10, 4, 0)

INPUT: Data in common block/BUCKET/

#### Program EDBUCK

PURPOSE: To Permit editing of design point variables

METHOD: EDBUCK allows user to edit wing design program variables CMO, CLDZIN, RESTART, and CONSTR(1) through CONSTR(4). In addition it allows the user to execute the next design case or calculate the edited design point, as described in the Appendix of the User's Manual.

USE: CALL OVERLAY (WDEZ, 10, 5, 0)

#### Program STOPOP

PURPOSE: To permit termination of wing design program cases

METHOD: STOPOP allows user to exit from a series of wing design cases, as described in the Appendix of the User's Manual.

USE: CALL OVERLAY (WDEZ,10,6,0)



## LIFT ANALYSIS MODULE

The graphics displays in the analysis module consist of two overlays called from the primary overlay , plus two subroutines called from program FINISH.

### Program DISTWST

**PURPOSE:** To display wing twist and permit editing of twist and several execution codes.

**METHOD:** DISTWST displays and permits editing of wing twist array plus canard angles of attack, SYMM, , WHUP, and ANYBOD. The display presentation is described in the Appendix of the User's Manual.

**USE:** CALL OVERLAY (ANLZ, 7, 6, 0)

**INPUT:** Input variables in common blocks

### Program DISUPWS

**PURPOSE:** To display fuselage upwash and wing pressure coefficient data

**METHOD:** DISUPWS provides display options for calculated fuselage upwash or wing pressure coefficient data, as described in the Appendix of the User's Manual.

**USE:** CALL OVERLAY (ANLZ, 7, 7, 0)

**INPUT:** Data in common blocks/UPWSH/and/CPBUPW1/.

### Subroutine DISTAB

**PURPOSE:** To display analysis module force coefficient summary and permit editing of horizontal tail angle of attack.

**METHOD:** DISTAB provides display of analysis program results as described in the Appendix of the User's Manual.

**USE:** CALL DISTAB (NH, HTALP)

**INPUT:** NH Horizontal tail angle of attack loop index  
HTALP Edited tail alpha

### Subroutine EXLOOP

PURPOSE: To display and Permit editing of variables within DO loops.

METHOD: EXLOOP displays current values of Mach number, configuration alpha, and canard alpha. It then permits editing of the next value to change within the cycle, as described in the Appendix of the User's Manual.

USE: CALL EXLOOP

INPUT: Configuration data in common blocks

## REFERENCES

1. Harris, Roy V., Jr.: An Analysis and Correlation of Aircraft Wave Drag. NASA TM X-947, 1964.
2. Craidon, Charlotte B.: Description of a Digital Computer Program for Airplane Configuration Plots. NASA TM X-2074, 1970.
3. U.S. Standard Atmosphere, 1962. NASA, U.S. Air Force, and U.S. Weather Bur., Dec. 1962.
4. Whitham, G. B.: The Flow Pattern of a Supersonic Projectile. Comm. Pure & Appl. Math., vol. V, no. 3, Aug. 1952, pp. 301-348.
5. Kulfan, R. M.; and Sigalla, A.: Real Flow Limitations in Supersonic Airplane Design. AIAA paper 78-147R, 1978.
6. Carlson, Harry W.; Mack, Robert J.; and Barger, Raymond, L.: Estimation of Attainable Leading-Edge Thrust for Wings at Subsonic and Supersonic Speeds. NASA TP-1500, 1979.

1. Report No. NASA CR-3353		2. Government Accession No.		3. Recipient's Catalog No.	
4. Title and Subtitle A SYSTEM FOR AERODYNAMIC DESIGN AND ANALYSIS OF SUPERSONIC AIRCRAFT PART 3 - COMPUTER PROGRAM DESCRIPTION				5. Report Date December 1980	
				6. Performing Organization Code	
7. Author(s) W. D. Middleton, J. L. Lundry, and R. G. Coleman				8. Performing Organization Report No. D6-41840-3	
9. Performing Organization Name and Address Boeing Commercial Airplane Company P.O. Box 3707 Seattle, Washington 98124				10. Work Unit No. NAS1-15534	
				11. Contract or Grant No.	
12. Sponsoring Agency Name and Address National Aeronautics and Space Administration Washington, DC 20546				13. Type of Report and Period Covered Contractor Report September 1978-August 1980	
				14. Sponsoring Agency Code	
15. Supplementary Notes Langley Technical Monitor: B. L. Shrout Part 3 of final report					
16. Abstract <p>An integrated system of computer programs has been developed for the design and analysis of supersonic configurations. The system uses linearized theory methods for the calculation of surface pressures and supersonic area rule concepts in combination with linearized theory for calculation of aerodynamic force coefficients. Interactive graphics are optional at the user's request.</p> <p>The description of the design and analysis system is broken into four parts, covered in four separate documents:</p> <ul style="list-style-type: none"><li>Part 1 - General Description and Theoretical Development (NASA CR-3351)</li><li>Part 2 - User's Manual (NASA CR-3352)</li><li>Part 3 - Computer Program Description (NASA CR-3353)</li><li>Part 4 - Test Cases (NASA CR-3354).</li></ul> <p>This part contains schematics of the program structure and describes the individual overlays and subroutines.</p> <p>These four documents supersede NASA contractor reports CR-2715, CR-2716, and CR-2717, which described an earlier version of the system.</p>					
17. Key Words (Suggested by Author(s)) Wing design Configuration analysis Wave drag Pressure distribution			18. Distribution Statement Unclassified - Unlimited  Subject Category 02		
19. Security Classif. (of this report) Unclassified		20. Security Classif. (of this page) Unclassified		21. No. of Pages 121	22. Price* A06