

11 84-33642

NASA Technical Memorandum 83789

# Photovoltaic Power System for Satellite Earth Stations in Remote Areas: Project Status and Design Description

Richard DeLombard  
*Lewis Research Center*  
*Cleveland, Ohio*

Prepared for the  
International Telecommunications Energy Conference  
sponsored by the Communications Society of the Institute of Electrical  
and Electronics Engineers  
New Orleans, Louisiana, November 4-7, 1984

**NASA**

PHOTOVOLTAIC POWER SYSTEM FOR SATELLITE EARTH STATIONS IN REMOTE AREAS:  
PROJECT STATUS AND DESIGN DESCRIPTION

Richard DeLombard  
National Aeronautics and Space Administration  
Lewis Research Center  
Cleveland, Ohio 44135

SUMMARY

A photovoltaic power system will be installed at a remote location in Indonesia to provide power for a satellite earth station and a classroom for video and audio teleconferences. The earth station may also provide telephone service to a nearby village. This activity is being implemented in support of the Agency for International Development's Rural Satellite Program. The purpose of this program is to demonstrate the use of satellite communications for development assistance applications. The purpose of the photovoltaic power system project is to demonstrate the suitability of a hybrid photovoltaic engine-generator power system for remote satellite earth stations. This paper discusses the Indonesian Rural Satellite Project and describes the photovoltaic power system.

INTRODUCTION

The NASA Lewis Research Center (LeRC) manages two projects involving the development and field testing of small-scale, decentralized stand-alone photovoltaic (PV) power systems. These projects were initiated in response to Congressional mandates in the mid to late '70s. For the U.S. Department of Energy, LeRC manages the PV Stand-Alone Applications Project which is part of the National PV Program. The objective of this project is to expand the PV stand-alone application technology base in support of U.S. industry. For the U.S. Agency for International Development (AID), LeRC manages the PV Technology Project, the objective of which is to determine the suitability (i.e. reliability and cost-competitiveness) of PV power systems for development assistance activities in rural areas of developing countries.

These projects support the development of stand-alone PV technology in that they provide needed systems experience in a real-world setting. Furthermore, they serve to stimulate interest in and an awareness of PV systems on the part of planners and decision makers from Third World countries and within the international development assistance community.

AID requested that LeRC examine the use of PV stand-alone systems for remote earth station applications within the context of the AID-funded Rural Satellite Program (RSP). The Academy for Educational Development (AED), Washington, D.C. manages the RSP for AID. Teleconsult, a subcontractor, provides technical consulting services. The RSP is intended to demonstrate that satellite communications can be used to provide reliable and cost-effective communication service to rural areas throughout the developing world. A cooperative effort between the United States and host country governments, the RSP supports such basic aspects of development as health care, agriculture improvement, adult literacy and classroom education (ref. 1).

As part of the RSP in Indonesia, a low-power satellite communications earth station powered by a PV power system will be field tested at a remote location on the island of Sulawesi. The project, illustrated conceptually in figure 1, will establish a communications link between several main college campuses and a remote classroom via satellite communications.

This paper reviews the status of both the RSP in Indonesia and the PV power system development and includes a description of the PV power system.

## BACKGROUND

The Indonesian Rural Satellite Project, jointly planned and funded by the Indonesian government and AID, includes technical assistance and training with emphasis on improved agricultural education.

An audio teleconferencing system, linked by Indonesia's PALAPA satellite system, provides a satellite conferencing link for 11 main campus locations of the Eastern Islands University Association (BKS) and a conference room in the offices of the Directorate General of Higher Education in Jakarta (fig. 2). The 11 main classrooms and the conference room are each equipped with an audio conferencing system, a facsimile machine and an electronic blackboard. The 12 locations have the capability of being connected together for conferencing activities and distributed classroom instruction.

A remote classroom with a conferencing system will be added to the teleconference system in December 1984. The PV-powered earth station will serve as the communication link for the remote classroom. The national telecommunications authority, PERUMTEL, may also use the earth station to provide telephone service for a nearby village.

Under the PV Technology Project, the AID Office of Energy is evaluating PV technology for a variety of remote applications. While commercial PV systems have been and are being used for certain communications applications (e.g. two-way radios, microwave repeaters), such systems have not yet been used for remote two-way earth station applications. The Indonesian RSP provided a unique opportunity to field-test a PV power system for that application category.

In late 1982, AID requested that LeRC develop and field test a PV power system as part of the Indonesian RSP. Early in 1983, a Request For Proposals for a competitive contract was issued by LeRC for the design, installation and field testing of such a PV power system. In October 1983, Hughes Aircraft Company was awarded a contract to implement this activity.

In early 1984, a site for the remote classroom, earth station and the PV power system on the island of Sulawesi (fig. 2) was selected by the Indonesian RSP staff. At about the same time, the RSP staff initiated a contract for the procurement of the earth station.

## DESIGN CONSIDERATIONS

There are several considerations that affect the design of a PV power system. The major considerations for this project were: available project

funds, available solar energy (insolation) data, site location, transportability, load energy consumption, load power profile and power system output characteristics.

Practically all earth stations that transmit and receive require some means of air conditioning. For a state-of-the-art earth station for use with domestic satellites, the power and energy requirements for the air conditioning are often equivalent to that of the earth station itself. For the Indonesian RSP, it was necessary to minimize the daily energy required by the earth station to reduce the size of the photovoltaic array and battery. This was due primarily to budget constraints. AED, therefore, included a requirement for low operating power in the specifications for the earth station procurement. The operating power was reduced through the use of high-efficiency low-power amplifiers, elimination of the air conditioner and turning off the earth station and classroom loads during nonoperating hours.

The sizes of the PV array and the battery for a stand-alone photovoltaic system are normally based on the amount of sunlight available (insolation) at the planned installation site, the electrical load requirements (power level and daily profile) and the available funds. At the time of contract award to Hughes, the precise site location was uncertain and only approximate values were known for the load use pattern and load power requirements. The size of the PV array was, therefore, based on estimates of the insolation and the approximate load pattern, as well as funding limitations. The actual daily energy output of the PV array will depend on the actual insolation characteristics of the installation site. If there is a short-term deficit in the array energy relative to the load energy, the battery will supply the requisite energy. For a long-term deficit, the engine-generator will supply the requisite energy.

Possible installation of telephone service to the nearby village will also have an effect on the daily amount of energy used. Although the PV power system does not supply energy to the village telephone system, the earth station must be in an operating mode for telephone communications. The additional earth station power for telephone communications over and above classroom communications is not great, but PERUMTEL had initially requested extended evening hours for telephone operation. Until the amount of available energy is determined, evening operating hours for telephone service would be restricted.

If full commercial telephone service were to be installed, using the earth station, the PV power system would not be able to supply the required energy. PERUMTEL would then need to furnish a standard ac supply.

These considerations of load power level and usage resulted in the load profile for the earth station and remote classroom given in table I. A block diagram of the PV power system for this application is shown in figure 3.

Transportability was also a design consideration as the Indonesians wanted the option of moving the earth station from one site to another to demonstrate its suitability in different parts of the country.

## SYSTEM DESCRIPTION

### Load Requirements

The load devices to be powered by the PV power system are shown schematically in figure 4 and include the earth station, an 800 W inverter, telephone terminal equipment, graphics equipment, facsimile machine and the audio converter. All of these load devices are supplied by the RSP. The power requirements of the various load devices are shown in table I.

The 800 W inverter was originally intended to power only the earth station. The 500 W inverter which is part of the PV power system was to power the classroom equipment. The available increments of inverter size from the supplier forced the choice of the 800 W inverter to power the 460 W earth station. To reduce the tare power lost in two operating inverters, it was decided that the classroom loads would also be powered from the 800 W inverter. The 800 W inverter will also allow for the future expansion of the earth station for more telephone channels.

The cooling fans for the earth station are powered by 48 V dc to reduce the amount of power passed through the inverter with the attendant losses. In the backup mode, when the engine-generator is furnishing power to the system, the fans operate from the fan power supply.

### Basic Power System Design

General. - A cost plus fixed fee contract was awarded to Hughes on October 7, 1983 for the design, fabrication, installation and one year operational support of the PV power system. The task elements of this contract are outlined in table II.

The system design proposed by Hughes was a slight modification of that developed by Hughes under a prior LeRC contract for a modular PV system design (ref. 2). One of the objectives of the previous contract was to develop a generic PV system design suitable for nearly any location in the world. The particular requirements of the remote earth station application led to some modifications of the previous standard design. Two major modifications are the addition of the backup engine-generator and the inverter.

A simplified schematic of the PV power system and loads is shown in figure 4. The major components of the power system are the system controller, PV array, battery, inverter, battery charger and the engine-generator. The primary mode of power system operation is for the array and battery to provide dc power to the loads. The engine-generator serves as a backup power source in either of two methods. In the first method, the engine-generator and battery charger charge the batteries and power the loads concurrently. In the second method, the engine-generator powers the loads directly.

System controller. - The control algorithm used in the controller can best be described by reference to table III. Various functions are performed as the battery state-of-charge (SOC), as measured by the system (and battery) voltage, changes. The controller has several comparators that sense the voltage levels noted in table III and initiate the appropriate actions.

Battery SOC control is performed by temporarily and successively switching off the two array sections at high levels of SOC or turning the engine-generator on at low levels of SOC. When the controller senses that the battery is nearly at 100 percent SOC, it switches off the two sections of the array to reduce the battery charging current. As the voltage decreases, the array sections are switched on again. If the battery is at approximately 40 percent SOC, the controller initiates the start of the engine-generator to charge the batteries. During this method of engine-generator operation, the loads continue to receive power through the 800 W inverter.

The power system is designed to respond to two types of failures, nominally termed "soft" and "hard." A "soft" failure occurs when the array electrical energy output has not been sufficient to meet the load demands and to keep the battery charged. The battery would then become discharged. The controller would automatically start the engine-generator to charge the battery through the battery charger. The controller would stop the engine-generator when the battery reaches approximately 90 percent SOC. Since this type of failure would be the most likely to occur, this is a no-break type of power backup.

A "hard" failure occurs when there has been a failure of a critical part of the power system and the system cannot supply any power to the loads. The engine-generator would then have to be manually started and used to power the loads until the PV power system could be repaired and returned to service. Since this type of failure is less likely to occur, a break in service is tolerated for this type of power backup.

Extreme over- and under-voltage system protection is also included in the controller functions. An over-voltage condition results from overcharging the battery due to a failure of the controller, engine-generator and/or battery charger. In this case, the controller would disconnect the PV array and engine-generator from the battery. An under-voltage condition would generally be caused by the lack of insolation over a period of time, overuse of the loads, failure of the engine-generator to start, failure of the battery charger or a combination of these causes. In this case, the controller would disconnect the loads from the battery.

PV array. - The output power of a PV cell is essentially directly proportional to the intensity of the incident solar energy. PV cells are electrically wired together and physically encapsulated into PV modules which are wired and grouped together into a PV array. The voltage and current add when modules are connected in series and parallel, respectively. It is thus possible to configure the array to produce the desired voltage, current and power needed for a particular application.

PV modules from Solec International, Inc., were selected by Hughes for this project as a result of a competitive bid process. These modules are rated at 66 W (15.6 V and 4.23 A at 28° C). Four modules in series result in a nominal system voltage of 48 V. Each 48 V string has a rated current and power output of 4.23 A and 264 peak W (28° C), respectively. Hughes' power system sizing calculations resulted in a PV array size of 1584 W (28° C) resulting in six strings wired in parallel. The rated output power is 1404 peak W at the expected operating temperature of 48° C.

The array structure is a simple, above-ground structure composed of foundation tubs, upright supports and cross straps. The tubs are filled with ballast material, such as rocks or earth, obtained from the installation site. The system batteries are mounted on the top of the tubs to add additional ballast weight to the structure. The prototype array constructed for the modular PV system design contract is shown in figure 5. The array structure design facilitates disassembly and transport with the array structure entirely above ground as opposed to having footers or pillars in the ground. This design meets the transportability requirements requested by the Indonesians.

Battery. - The storage battery provides an energy leveling function for the system. When more energy is produced by the array than is being used by the loads, such as at midday on a sunny day, excess energy is stored in the battery. When less energy is produced by the array than is being used by the loads, such as on a cloudy day or at night, energy is extracted from the battery. As discussed above, the controller prevents the battery from becoming overcharged or severely discharged.

The battery is composed of 24 C&D Power Systems, type 3KCPSA-5, three cell packs. Each three cell pack is rated at 340 A-hr (500 hr rate) at 25° C. The battery configuration consists of three parallel strings, each string containing eight packs in series. This results in a battery with a nominal voltage of 48 V and a nominal capacity of 1020 A-hr or 49 kWh.

500 W inverter. - The inverter provides an ac output of 220 V at 50 Hz, which is compatible with Indonesian commercial utility power. The output power rating is 500 W. This inverter is used in a cold standby mode and would be operated only if the 800 W inverter and the engine-generator have both failed.

Battery charger. - The battery charger provides a controlled voltage and current to charge the battery from the engine-generator. As explained earlier, the engine-generator is started when the battery SOC has fallen below a certain level. This backup operation provides for continuous power to the load. The output capacity of the battery charger is 2.4 kW, which is sufficient to power the loads and simultaneously charge the battery in approximately 10 hr.

Engine generator. - The engine-generator provides an ac output of 220 V at 50 Hz, and is primarily used for backup power for the earth station and the classroom. The output capacity of 2.5 kVA is sufficient to power the loads and charge the battery. The engine-generator is started automatically upon command from the controller, or manually, if necessary, by an operator. Engine-generator power is also available to power maintenance and test equipment for the earth station.

### Project Specific Design Features

Transportability. - As discussed above, transportability was one of the PV power system design considerations. The array structure design and battery selection reflect this requirement.

The array structure used in the Hughes design offers several advantages. The structure is not implanted in the ground and does not require much (if any) site preparation, yet is rigid enough to properly support the PV modules. The design and construction is simple and straightforward and allows for onsite assembly by relatively unskilled personnel.

Physical size of the batteries was a design consideration. The three cell packs of batteries each weigh 131 lbs, which is a reasonable weight from the standpoint of transporting and handling the batteries. The use of lower weight individual cells would have increased the number of pieces threefold, whereas the use of more cells per pack would have increased the weight and size to the point of being unmanageable in the field.

Reliability. - The availability of power has been enhanced through the incorporation of an engine-generator in the system design. No interruption in power will occur when the engine-generator is automatically started and stopped to charge the battery if the battery SOC becomes low. In the unlikely event that the PV power system is unable to provide power to the loads, the engine-generator alone is capable of supplying the required power to all the loads.

As presently configured, the 500 W inverter will function in a cold standby mode. The 800 W inverter supplied with the earth station furnishes ac power for the earth station as well as for the classroom equipment. In the event that both the 800 W inverter and the engine-generator fail, the 500 W inverter is capable of providing power to the earth station and the audio convener. Since the inverter would be operating at maximum capacity, its use would have to be restricted to operator messages to request maintenance assistance.

## PROJECT STATUS

### PV Power System

Fabrication/testing. - As of August 1984, the power system design is complete and component fabrication is proceeding. Proof-of-design testing of the PV power system is scheduled for September.

Schedule/milestones. - The schedule is shown in figure 6 with major milestones indicated for the PV power system design, testing, installation and operation. The PV power system is currently scheduled to be ready for shipment in late September 1984.

### Indonesian Rural Satellite Project

Implementation. - There are three separate areas of activity involved in project implementation: software development, personnel training, and installation of the classroom equipment.

Four agricultural educational programs are being developed for use with the teleconferencing system. In these courses, faculty will use the interactive audio and graphics capabilities of the teleconferencing system to teach the classes.

Two five-day workshops have been held in Indonesia for over 45 faculty members who will be using the system initially. Short-term training was conducted in the United States during 1983 and 1984 for 12 faculty members from universities and teacher training institutions. The objectives of this short-term training were to acquaint the group with the technology of the teleconferencing system, provide instruction in teleconferencing teaching techniques,



and, perhaps most important, help to improve skills in curriculum development. These faculty members will assist other BKS faculty in adapting their course materials to the teleconferencing teaching mode and understanding the system's technical capabilities (ref. 3).

The classroom equipment for the 11 main campus locations and the conference room was installed in early 1984. The majority of the equipment is operating satisfactorily, however, the terrestrial telephone lines to the classrooms have been found to be noisy. PERUMTEL is working with AED in an attempt to minimize the noise problem.

Schedule/milestones. - The schedule is shown in figure 6 with major milestones indicated for the shipping, installation and operation of the earth station. The earth station will be ready for shipment by late September 1984.

### CONCLUDING REMARKS

The PV power system demonstration project described herein is expected to have an impact on the future choices of power systems for remote telecommunication applications, particularly those involving earth stations. The worldwide use of earth stations in remote areas is expected to increase dramatically in the future, especially with Intelsat's new standard for small earth stations. The high reliability, low fuel cost and low maintenance features of PV-hybrid power systems make them an attractive alternative for such applications.

### REFERENCES

- 1 UPLINK, No. 2, pp. 1, 4 and 6, July 1982.
- 2 G. J. Naff and N. A. Marshall, "Photovoltaic Stand-Alone Modular Systems Phase II-Final Report", HAC-E8179, Hughes Aircraft Co., Long Beach, CA, July 1983. (NASA-CR-168230).
- 3 UPLINK, No. 4, pp. 1 and 10, February 1984.

TABLE I. - LOAD PROFILE FOR EARTH STATION  
AND CLASSROOM

Load device	Power, W	Hours/ day, hr	Days/ week	Average energy/day, W-hr
Earth station	460	8	6/7	3154
Telephone terminal	30	8	6/7	206
Graphics/FAX	100	8	6/7	686
Audio convener	35	8	6/7	<u>240</u>
Total				4286

TABLE II. - CONTRACT TASKS

Task	Description
1	Develop design of PV power system
2	System fabrication and proof-of-design testing
3	System revisions, preshipment inspection and tests
4	Packaging and shipping
5	Installation, checkout and user training
6	Preparation of manuals and training materials
7	System performance evaluation and operational support
8	Interim, design, performance and final reports

TABLE III. - CONTROLLER FUNCTIONS

Voltage increasing		Voltage decreasing	
System voltage, V	Action taken	System voltage, V	Action taken
62.0	Array and generator disconnected	57.0	Two-thirds of array turned on
60.0	Two-thirds of array turned off		
56.4	One-third of array turned off		
55.0	Generator turned off to stop battery charging		
		53.6	One-third of array turned on
		46.8	Generator turned on to charge batteries
		43.2	All loads disconnected

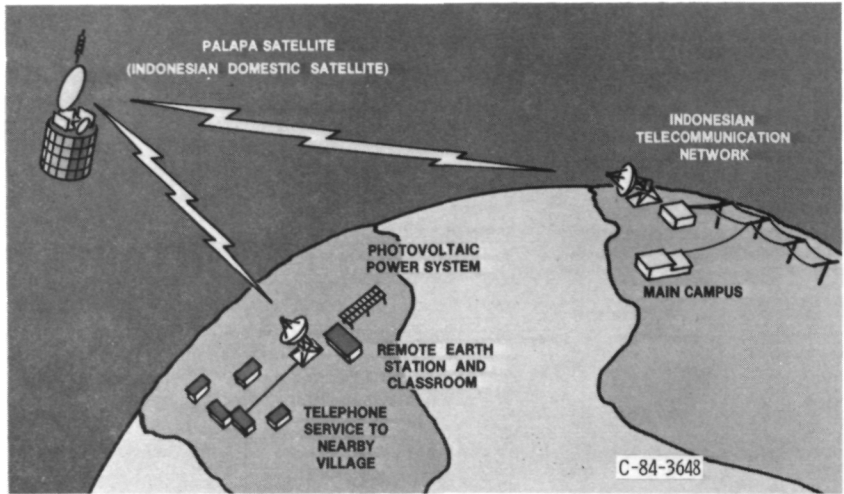


Figure 1. - Photovoltaic power system for remote telecommunication application in Indonesia.

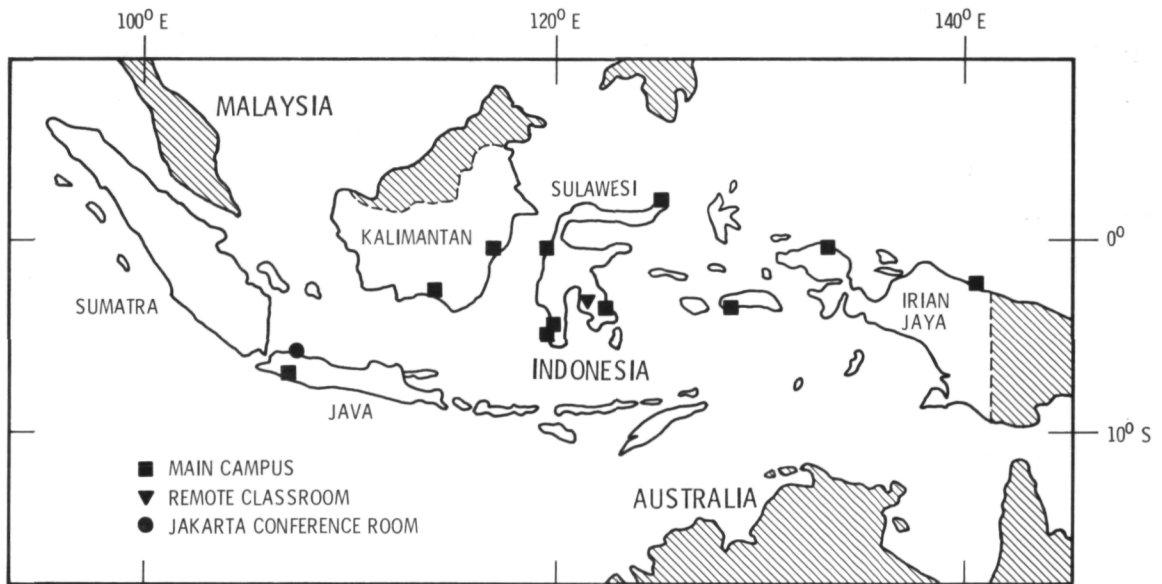


Figure 2. - Indonesian rural satellite project - site locations [1].

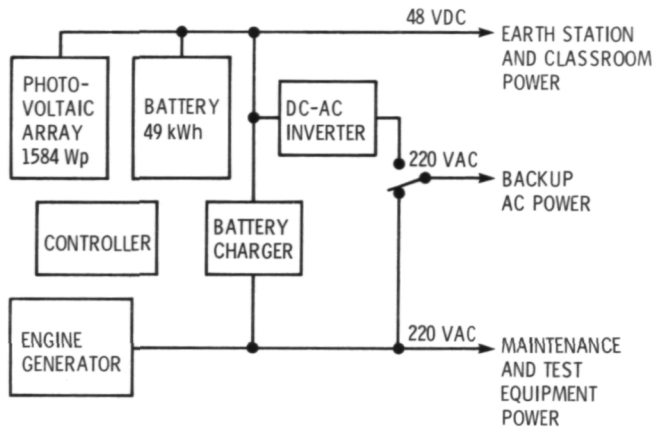


Figure 3. - PV power system block diagram

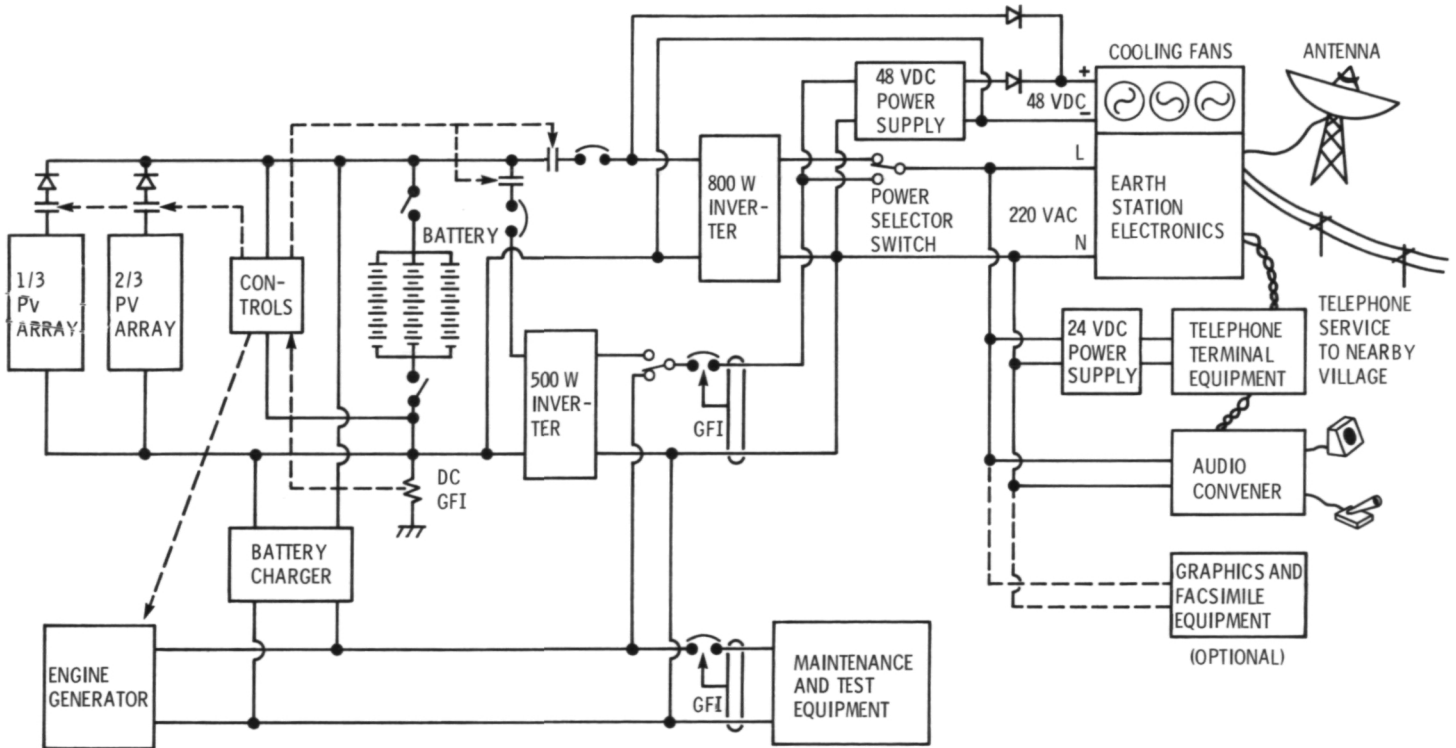


Figure 4. - PV power system, earth station and classroom equipment schematic diagram.

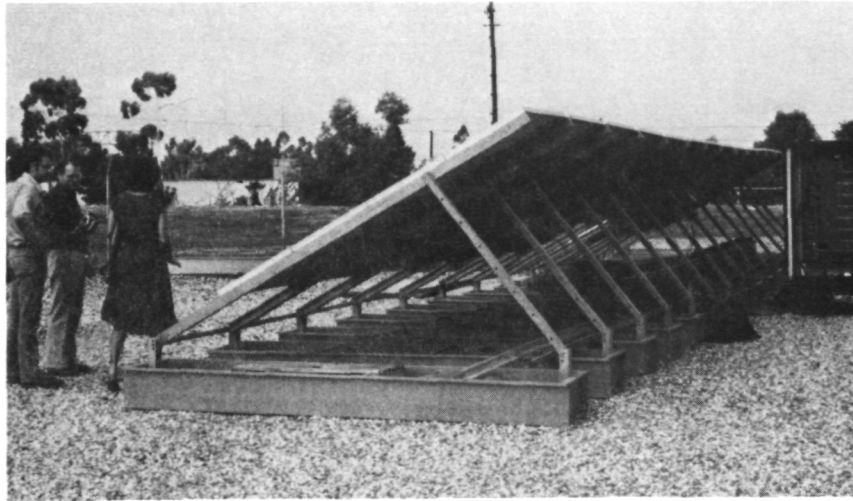


Figure 5. - Array structure.

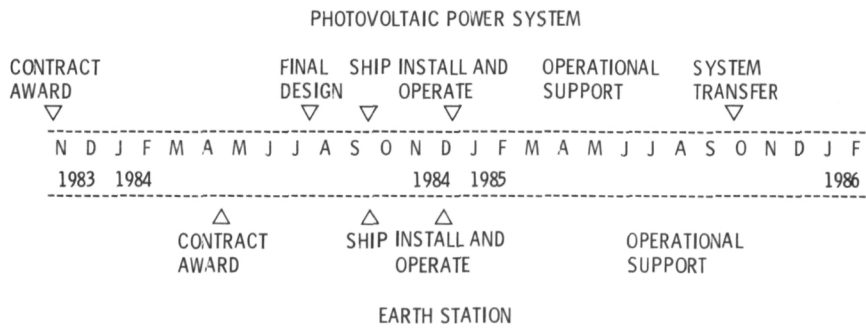


Figure 6. - Schedule and milestone chart.

1. Report No. NASA TM-83789		2. Government Accession No.		3. Recipient's Catalog No.	
4. Title and Subtitle  Photovoltaic Power System for Satellite Earth Stations in Remote Areas: Project Status and Design Description				5. Report Date	
				6. Performing Organization Code  776-54-01	
7. Author(s)  Richard DeLombard				8. Performing Organization Report No.  E-2285	
				10. Work Unit No.	
9. Performing Organization Name and Address  National Aeronautics and Space Administration Lewis Research Center Cleveland, Ohio 44135				11. Contract or Grant No.	
				13. Type of Report and Period Covered  Technical Memorandum	
12. Sponsoring Agency Name and Address  National Aeronautics and Space Administration Washington, D.C. 20546				14. Sponsoring Agency Code	
15. Supplementary Notes Prepared for the International Telecommunications Energy Conference sponsored by the Communications Society of the Institute of Electrical and Electronics Engineers, New Orleans, Louisiana, November 4-7, 1984. Work performed for U. S. Agency for International Development, Bureau of Science and Technology, Office of Energy, Washington, D.C.					
16. Abstract  A photovoltaic power system will be installed at a remote location in Indonesia to provide power for a satellite earth station and a classroom for video and audio teleconferences. The earth station may also provide telephone service to a nearby village. This activity is being implemented in support of the Agency for International Development's Rural Satellite Program. The purpose of this program is to demonstrate the use of satellite communications for development assistance applications. The purpose of the photovoltaic power system project is to demonstrate the suitability of a hybrid photovoltaic engine-generator power system for remote satellite earth stations. This paper discusses the Indonesian Rural Satellite Project and describes the photovoltaic power system.					
17. Key Words (Suggested by Author(s))  Photovoltaic power systems Remote satellite earth stations			18. Distribution Statement  Unclassified - unlimited STAR Category 32		
19. Security Classif. (of this report)  Unclassified		20. Security Classif. (of this page)  Unclassified		21. No. of pages	22. Price*

National Aeronautics and  
Space Administration

Washington, D.C.  
20546

Official Business  
Penalty for Private Use, \$300

SPECIAL FOURTH CLASS MAIL  
BOOK



Postage and Fees Paid  
National Aeronautics and  
Space Administration  
NASA-451

**NASA**

POSTMASTER: If Undeliverable (Section 158  
Postal Manual) Do Not Return

---