

NAS8-36955



**Chemical Release and Radiation
Effects Experiment Advanced
Planning and Coordination
5-32417**

(NASA-CR-184439) CHEMICAL RELEASE
AND RADIATION EFFECTS EXPERIMENT
ADVANCED PLANNING AND COORDINATION
Final Technical Report, 31 May 1990
- 4 Apr. 1991 (Alabama Univ.)

N90-12718

Unclass

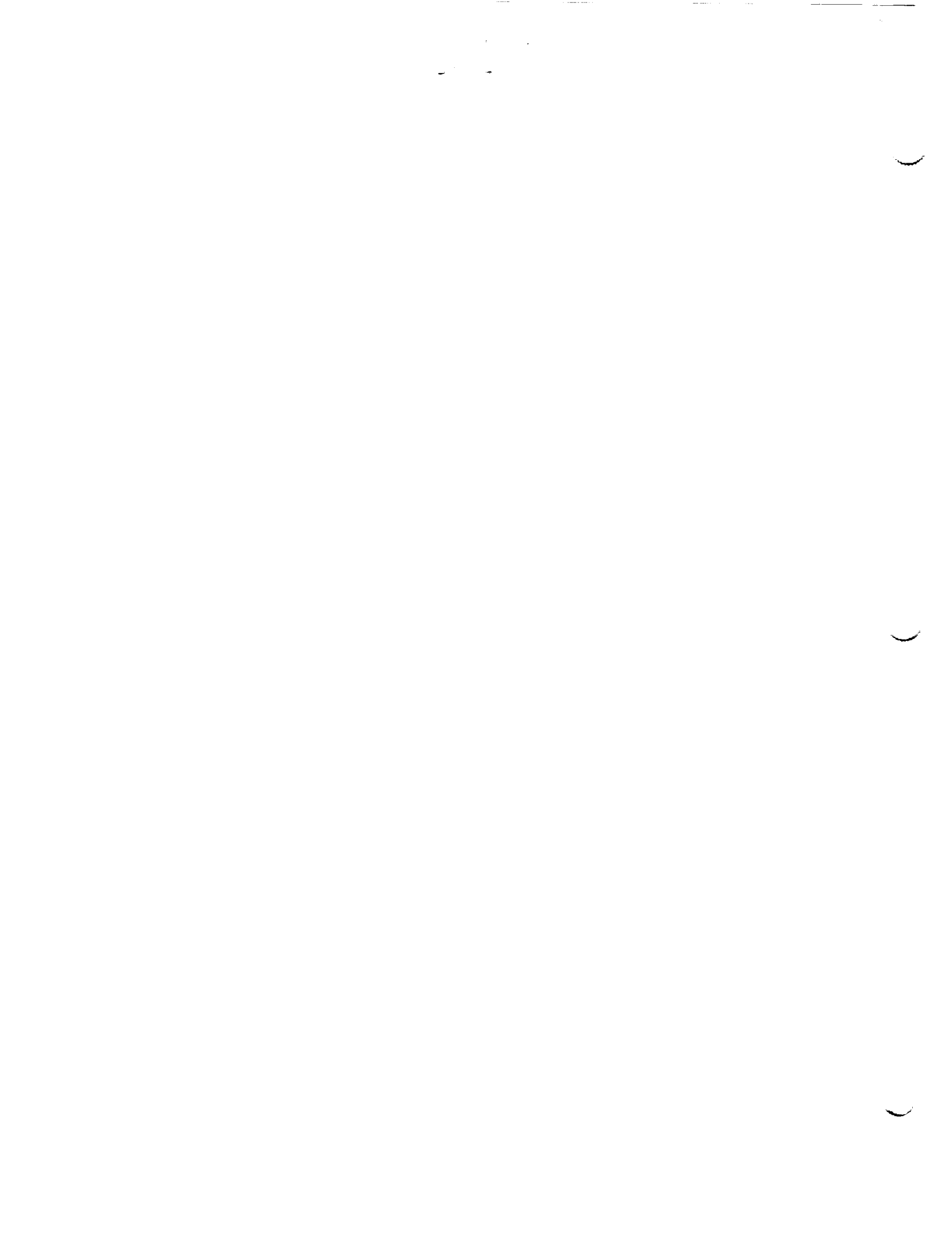
~~397~~
261

G3/46 0127403

481975

**Research Institute
The University of Alabama in Huntsville**

38



**Technical Report # 5-32417
Contract Number NAS8-36955
Delivery Order No. 0094**

**Chemical Release and Radiation
Effects Experiment Advanced
Planning and Coordination
5-32417**

**Final Technical Report for the Period
May 31, 1990 through April 4, 1991**

(April 1991)

Prepared by:

**William W. Vaughan
Melanie Alzmann**

**Research Institute
University of Alabama in Huntsville
Huntsville, Alabama 35899**

Prepared for:

**NASA Marshall Space Flight Center
Huntsville, Alabama 35812**

**COTR: Mr. Larry Smith
EM-13**

1

2

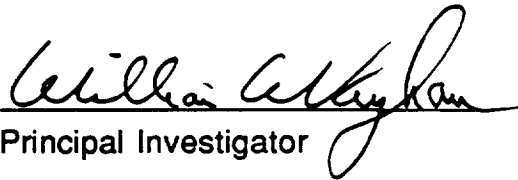
3

PREFACE

This technical report was prepared by the staff of the Research Institute, The University of Alabama in Huntsville. It summarizes the key aspects of the research performed under contract NAS8-36955, Delivery Order 94. Dr. William W. Vaughan was Principal Investigator. Technical work was accomplished under the direction of Ms. Melanie Alzmann.

The views, opinions, and/or findings contained in this report are those of the author(s) and should not be construed as an official National Aeronautics and Space Administration, Marshall Space Flight Center position, policy, or decision unless so designated by other official documentation.

I have reviewed this report, dated 4 April 1991 and the report contains no classified information.


Principal Investigator

Approval:



Research Institute 

1

2

3

TABLE OF CONTENTS

	<i>Title</i>	<i>Page</i>
I.	Statement of Work	1
II	Summary of Meetings, Workshops and Special Events	2
III.	Detail Agendas of Meetings and Workshops	3
IV.	CRRES Program Description	5

APPENDIX

The Combined Release and Radiation Effects Satellite Program
CRRES A Unique Series of Scientific Experiments

1

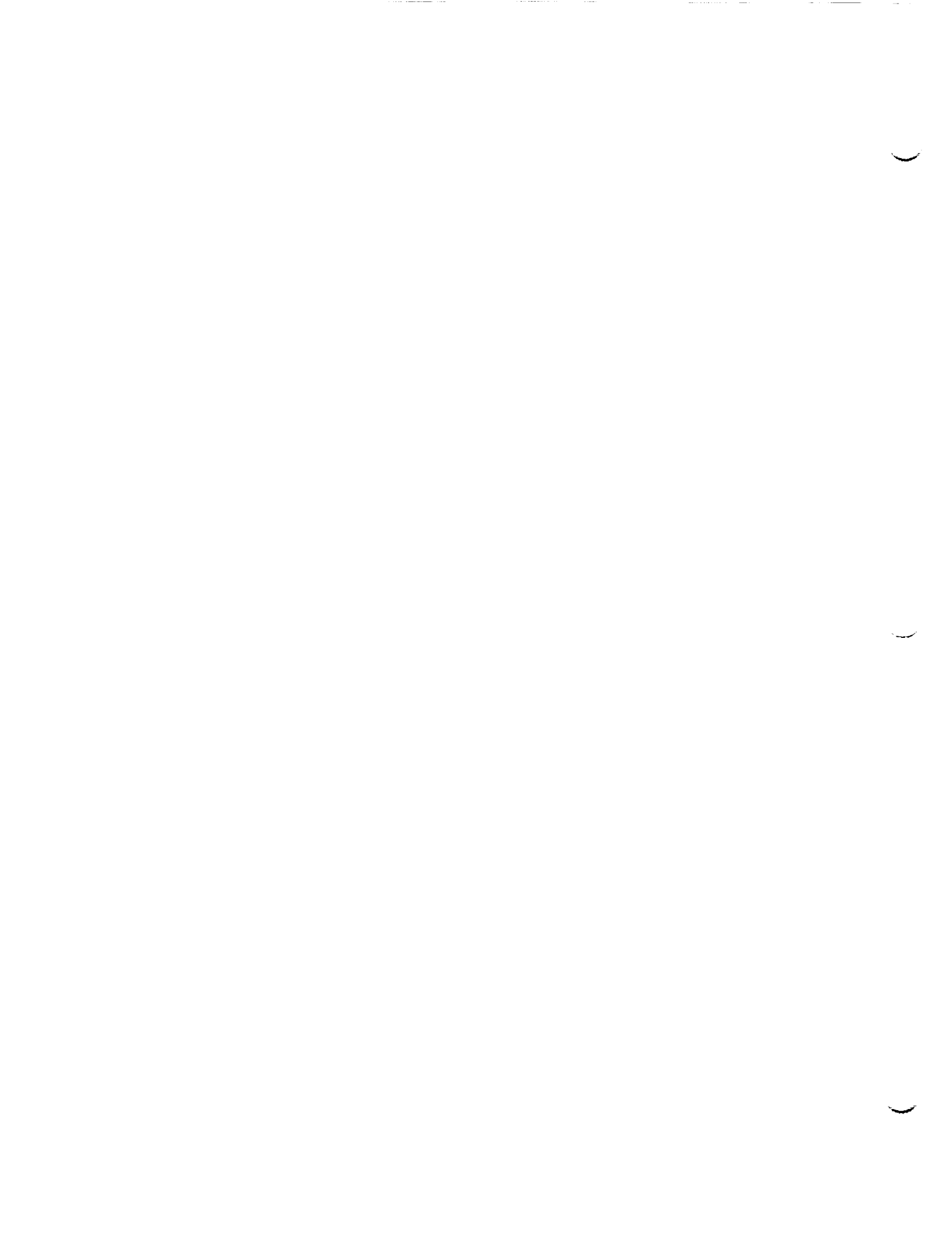
2

3

SCOPE OF WORK

**TASK: CHEMICAL RELEASE AND RADIATION EFFECTS EXPERIMENTS
ADVANCED PLANNING AND COORDINATION**

- (1) The contractor shall provide the assessment, coordination and advanced planning concepts for the Chemical Release and Radiation Effects Satellite (CRRES) project experiments through participation in Investigator Working Groups and documentation of meetings, status, problem areas and action items.
- (2) The contractor shall perform reviews and critiques to broaden the definition of the project, and scientific community involvement in the project, through the organization and participation of workshops involving a large segment of the science community, and provide subsequent documentation.
- (3) The contractor will collaborate with the MSFC Project Scientist and participate in science/engineering team meetings.
- (4) The contractor will provide special emphasis consultant personnel, where required, for assessments of concepts and approaches which may cause significant improvements and revisions in the project. This work also shall include documentation of project activity.



I. Statement of Work

**CHEMICAL RELEASE AND RADIATION EFFECTS
EXPERIMENT ADVANCED PLANNING AND COORDINATION**

(1) The contractor shall provide the assessment and solar terrestrial/magnetospheric advance planning concepts for the Chemical Release and Radiation Experiment (CRRES) Satellite project through participation in science study groups and coordination and documentation of meetings, status, problem areas and action items.

(2) During the course of project development , the contractor shall perform reviews and critiques to broaden the definition; or broaden the scientific community involvement in the project, through the organization and the participation in workshops involving a large segment of the science community and provide subsequent documentation of workshop and project activity.

(3) Collaborate with the MSFC scientists and engineers on science studies and participate in science/engineering team meetings.

(4) As the project evolves, the contractor shall provide special emphasis consultant personnel, where required, for assessments of concepts and approaches which may cause significant revisions or improvements in the project. The work also shall include the desired documentation of the project activity.



II. Summary of Meetings, Workshops and Special Events

During the contract period, assessment and coordination of the CRRES project scientific investigators was undertaken and accomplished. Meetings were held for scientific work as well as engineering/team meetings and Special Events. The contractor coordinated and participated in all events listed below.

- (1) July 19, 1990 MEDIA BRIEFING SESSION
Kennedy Space Center, FL

Documentation of the briefing activities was accomplished by the contractor in the form of notes, video taping and still photography. These were incorporated into a larger record released to NASA and put in permanent collection.

- (2) July 25, 1990 LAUNCH OF ATLAS/CENTAUR 69
Kennedy Space Center, FL

Documentation of the launch activities was accomplished by the contractor in the form of notes, video taping and still photography. These were incorporated into a larger record released to NASA and put in permanent collection.

- (3) November 6-7, 1990 Investigators Working Group #12
AFGL Hanscom, MA

Documentation of the meeting activities was accomplished by the contractor and distributed to the COTR and Project Office. A copy is on permanent file in the University of Alabama in Huntsville's Research Institute office. An Agenda of the meeting is included herewith for the purposes of this final report.

- (4) December 19, 1990 Sounding Rocket Design Review
Wallops Flight Facility, VA

Participation and coordination was achieved by the contractor.

—

—

—

III. Detail Agenda of Meeting

AGENDA
CRRES IWG MEETING NUMBER 13
AIR FORCE GEOPHYSICS LABORATORY
NOVEMBER 6-8, 1990

TUESDAY, NOVEMBER 6, 1990

0900	WELCOME AND INTRODUCTIONS	
0915	PROGRAM UPDATE	REASONER
0930	HEADQUARTERS REPORT	HOWARD
1000	CRRES SATELLITE STATUS LESSONS LEARNED	BSSD
1030	STATUS OF CONTRACTS	MSFC
1045	REPORT ON RECENT EXPERIMENTS	
	A. PEGSAT	HOFFMAN
	B. KWAJALEIN CAMPAIGN	MENDILLO BERNHARDT KELLEY
	C. SOUTH PACIFIC CRITICAL VELOCITY	WESCOTT
1200	LUNCH	
1300	PLANNING FOR HIGH-ALTITUDE CAMPAIGN	
	A. WINDOWS	HOFFMAN
	B. CSTC INTERFACE	FRITZ
	C. CSTC OPERATIONS	DOWDEN
	D. NORAD INTERFACE	HOSKINS
	E. AIRCRAFT REQUIREMENTS	ALL
	F. GROUND SITE REQUIREMENTS	ALL
	G. COMMUNICATIONS AND COORDINATION	ALL

1

2

3

WEDNESDAY, NOVEMBER 7, 1990

0900 CARIBBEAN CAMPAIGN PLANNING

A. WINDOWS	WESCOTT/ HOPKINS
B. ROCKET CAMPAIGN LOGISTICS	BROWN
C. ROCKET SEQUENCE	REASONER
D. CRRES SATELLITE RELEASE SEQUENCE	REASONER
E. ARECIBO INTERACTIONS	DUNCAN
F. AIRCRAFT REQUIREMENTS	ALL
G. GROUND SITE REQUIREMENTS	ALL
H. COMMUNICATIONS AND COORDINATION	ALL

—

—

—

IV. CRRES PROGRAM DESCRIPTION

The CRRES Program Description was finalized, printed and distributed by the contractor. A copy is included herewith for the purposes of this FINAL REPORT.

A video tape presentation of the CRRES Program to date was completed and copied for distribution in collaboration with another NASA effort on CRRES. A copy of this video taping will be kept on permanent file by the contractor.

—

—

—

APPENDIX

—

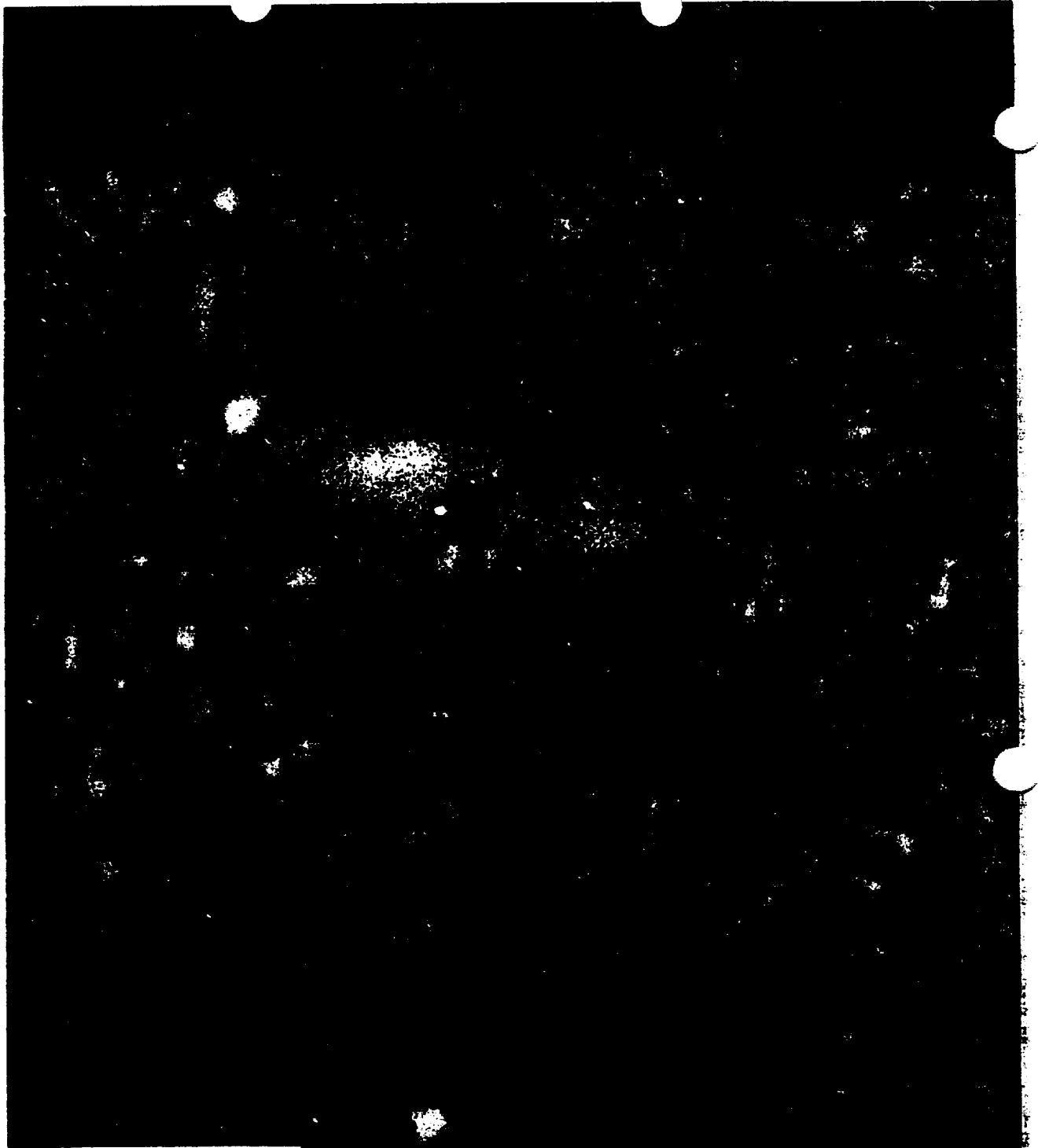
—

—

THE COMBINED RELEASE AND RADIATION EFFECTS SATELLITE PROGRAM

CRRES

A UNIQUE SERIES OF SCIENTIFIC EXPERIMENTS



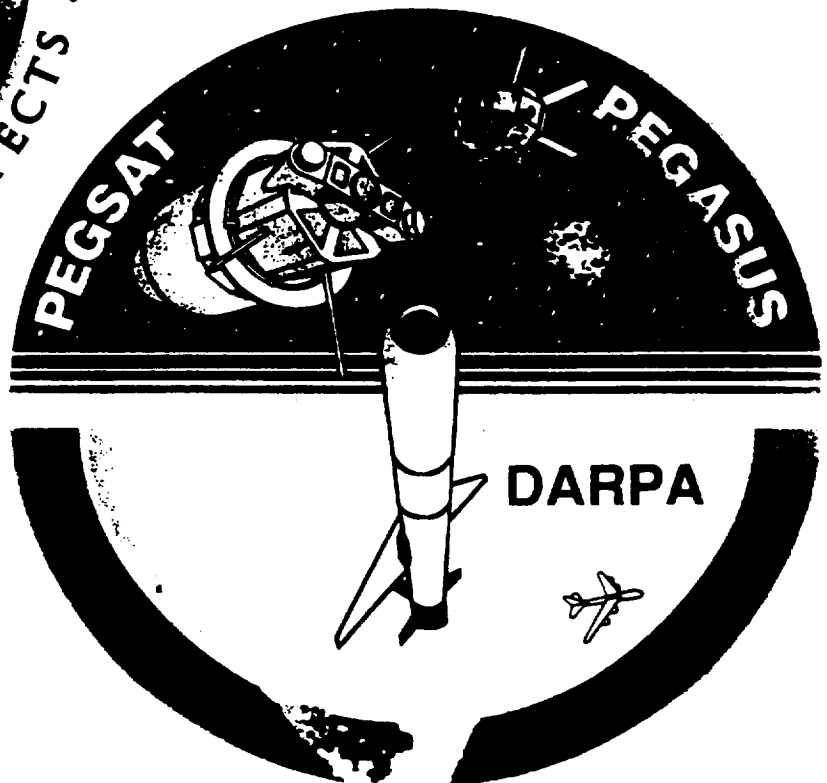
The first PEGSAT release was over Great Slave Lake in Northwest Canada on April 16, 1990. The expanding green "smoke ring" of neutral barium atoms travels along the satellite path, leaving behind a trail of barium ions glowing purple. These ions are grabbed by the magnetic field lines and line up in streams. A large region of the aurora has been painted by these glowing ions.

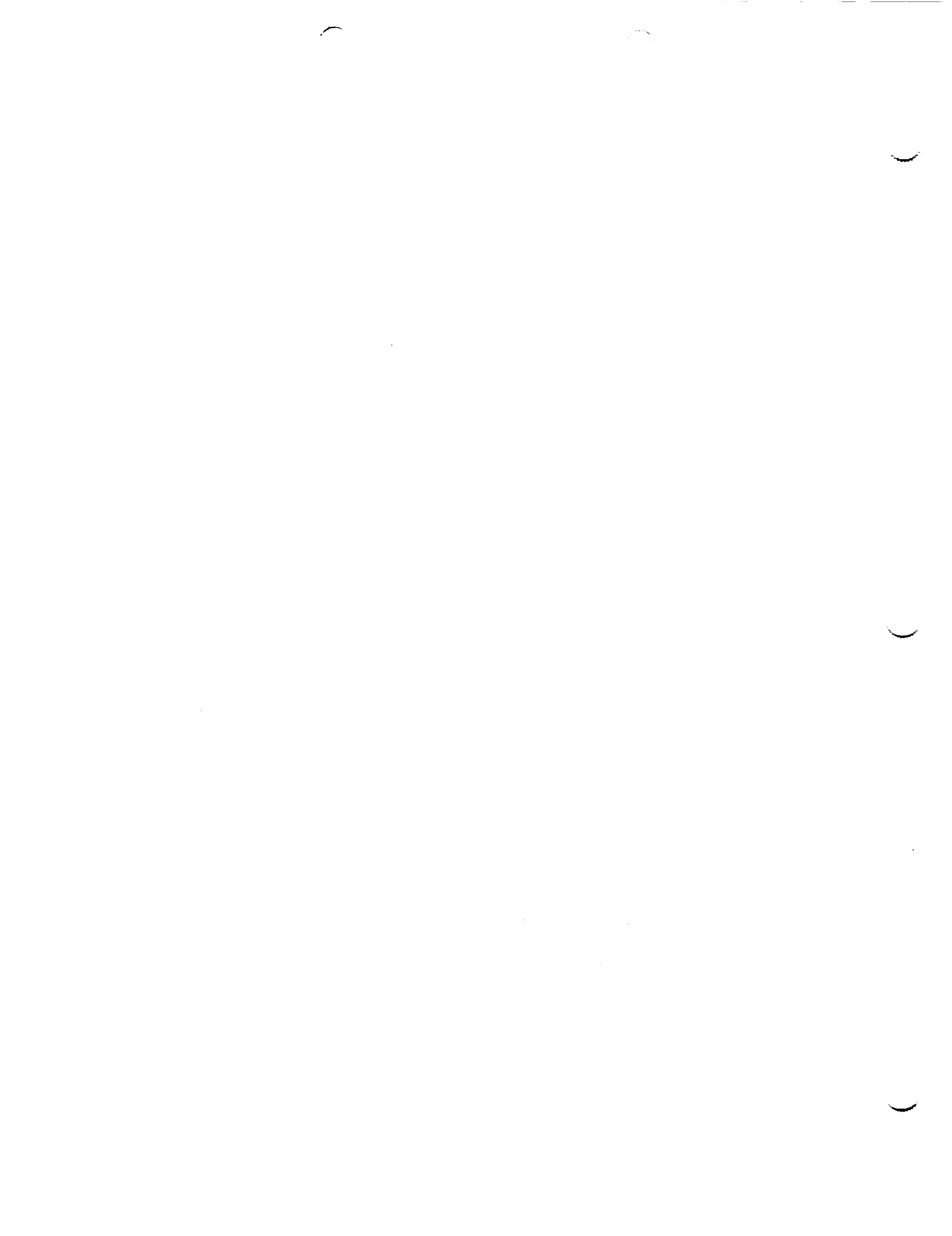
ORIGINAL PAGE IS
OF POOR QUALITY

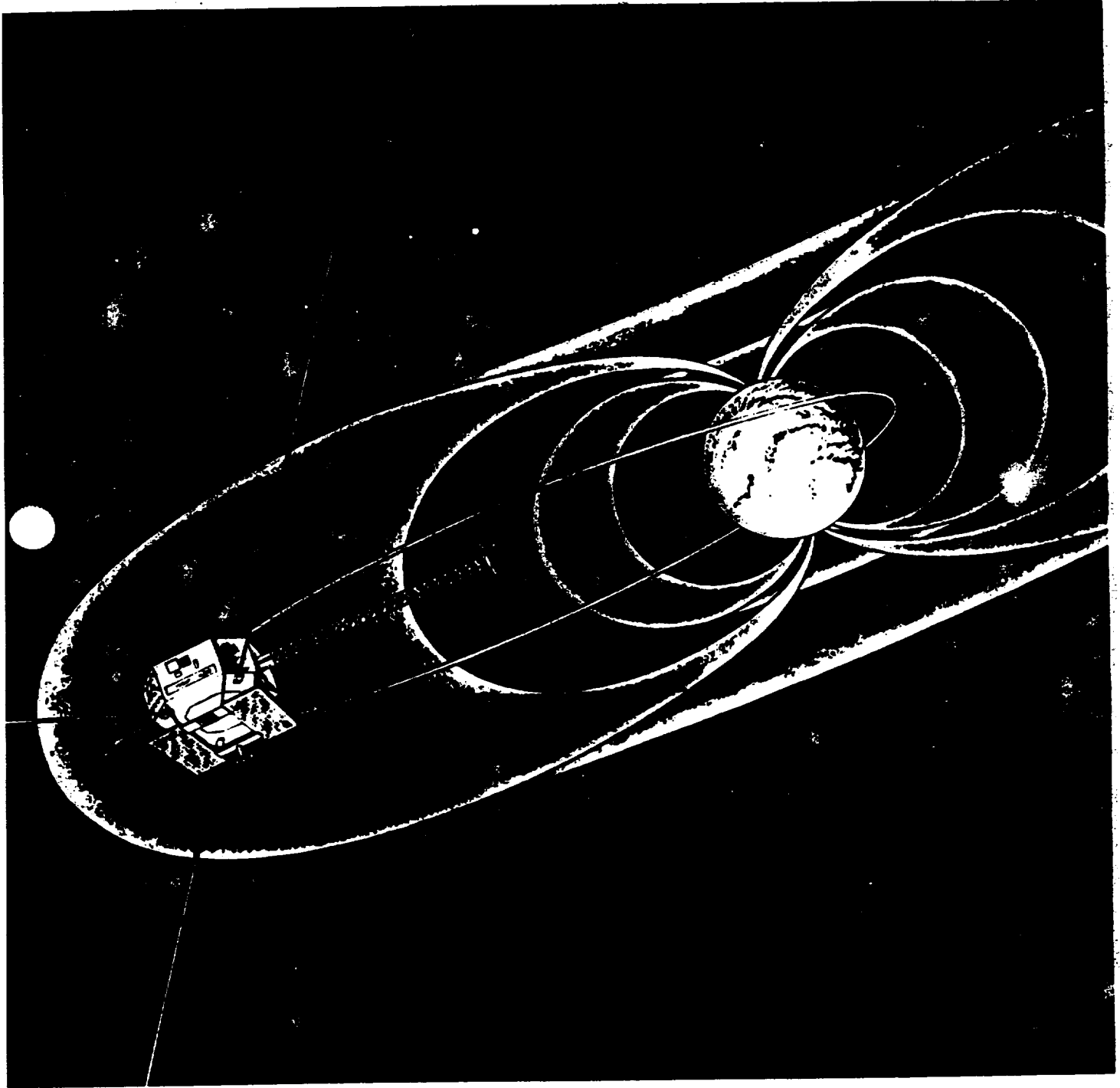
TABLE OF CONTENTS

EARTHSPACE 1
HOW EARTHSPACE AFFECTS US. 3
NEED FOR ACTIVE EXPERIMENTS. 5
TYPES OF CHEMICAL RELEASES. 6
CRRES PROGRAM SCHEDULE. 14
INTERNATIONAL SUPPORT AND
COORDINATED STUDIES. 16
PHOTOGRAPHING CHEMICAL RELEASES. 18
CRRES AS A PROGRAM. 22

USAF/NASA







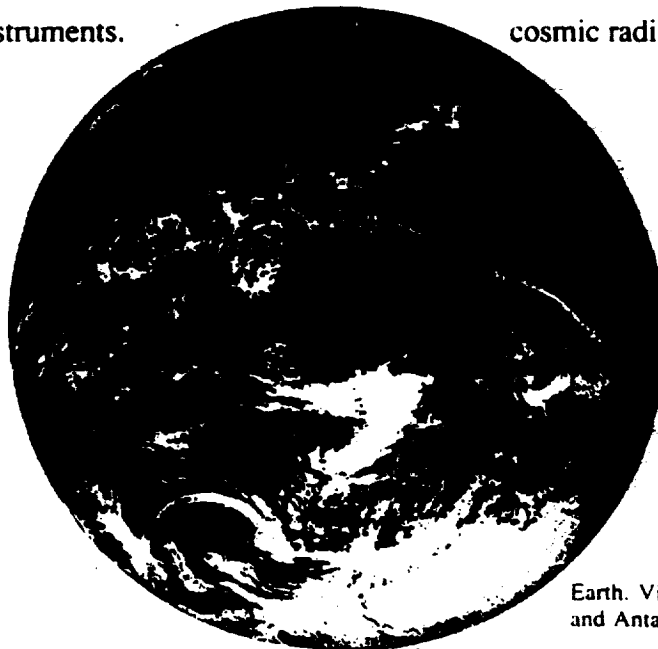
A Depiction of CRRES GTC orbit through toroidal Van Allen Radiation Belt, showing Geosynchronous Transfer Orbit (GTO) - 450 KM perigee, 40,450 KM apogee.

ORIGINAL PAGE IS
OF POOR QUALITY

EARTHSPACE

The National Aeronautics and Space Administration (NASA) and the Department of Defense, have joined in a program to study the space environment which surrounds Earth and the effects of space radiation on modern satellite electronic systems. The COMBINED RELEASE AND RADIATION EFFECTS SATELLITE (CRRES) will carry an array of active experiments with chemical releases and a complement of sophisticated scientific instruments which will accomplish these objectives. Other chemical release active experiments will be performed with sub-orbital rocket probes. These chemical releases will "paint" the magnetic and electric fields in Earthspace with clouds of glowing ions. Earthspace will be a laboratory, and the releases will be studied with an extensive network of ground-, aircraft-, and satellite-based diagnostic instruments.

We live in a thin shell of air only 100 miles thick, on the surface of planet Earth. The sun provides energy in the form of light and heat, making life possible. Most of what we experience: wind, rain, heat, cold, and life itself, is made possible by the energy from the sun and the fortuitous place of Earth in the solar system. We are not too close, like Venus with its clouds of carbon dioxide and surface temperature of 700 degrees; nor are we too far or a bit too small, like Mars which lost its atmosphere millions of years ago. Above our atmosphere, above the air and clouds, not directly known to our senses lies an exciting realm of magnetic fields, electric fields, radio waves, and atomic particles, that is as important as the air we breathe. This is EARTHSPACE, surrounding us with a protecting mantle of magnetic fields that shield us from harmful cosmic radiation.

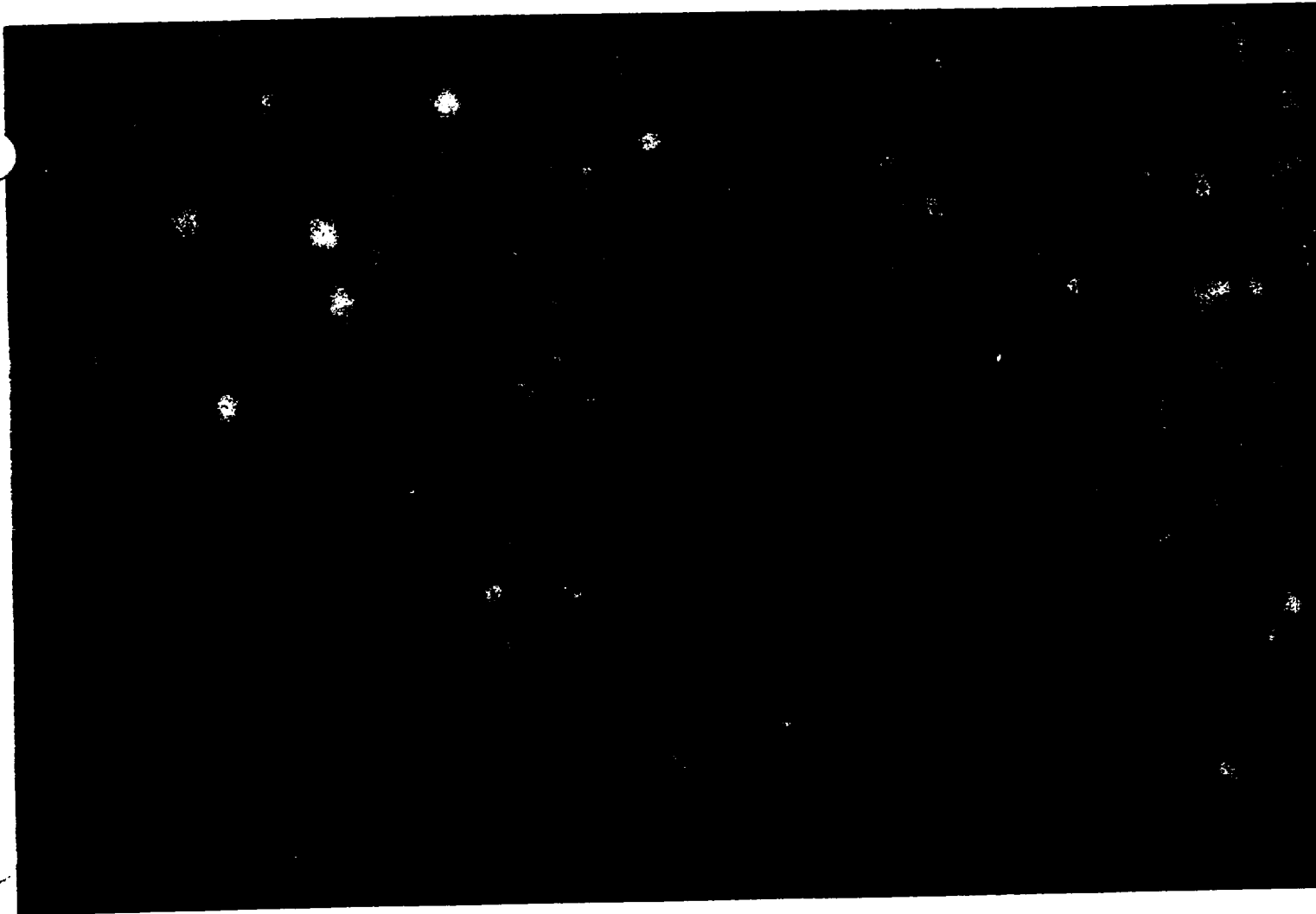


Earth. View from Apollo 17 spacecraft, showing Africa and Antarctic ice cap.

**ORIGINAL PAGE IS
OF POOR QUALITY**

The most obvious manifestation of Earthspace around us is the aurora, or the Northern and Southern Lights. Known to the ancients, these lights in the regions of the Boreal and Austral Poles were first interpreted as being supernatural in origin, and later attempts were made to ascribe scientific causes, such as sunlight reflecting from ice clouds high in the atmosphere.

In the Middle Ages, the Italian scientist Galileo, while looking at the sun through a telescope for the first time, noticed dark "spots" on the surface that were ever changing. As the sunspots were studied over the years, the number of spots waxed and waned in an eleven year cycle. Also noted, was that the chance of viewing the aurora rose and fell with the number of sunspots. Thus began the realization that the sun "communicated" with the Earth in ways other than light and heat. This was the first real beginning of modern space physics.



Typical blue-green "drapery" aurora borealis, as seen from Ft. Smith, Canada.

HOW EARTHSPACE AFFECTS US

Even before the era of direct space exploration with satellites, scientists had begun to perceive that electrically charged atoms flowing outward from the sun collided with the magnetic field of the Earth and played a significant role in creating the Earth's environment. Reception of radio waves over long distances showed the presence of a layer of conducting gas above the atmosphere. At the time, explorations were limited to ground-based instruments, and much of the important data necessary to build even a rudimentary understanding were not available.

The launch of the United States scientific satellite Explorer I came during the International Geophysical Year 1958. This was a time of increased awareness of the importance of magnetism, electric currents, and charged particles surrounding the Earth. The premier scientific discovery of Explorer I was the Van Allen Radiation Belt. This

We are familiar with three states of matter: solid, liquid, and gas. Ice, liquid water, and steam, are three forms of a substance known to us all. A fourth state of matter exists in space, a state where the atoms are positively charged and share space with free negatively charged electrons. This state of matter can conduct electricity and interact strongly with electric and magnetic fields. We call this state of matter a PLASMA.

Three decades of probing Earthspace with a wide variety of instruments have led to a model of the essential features of the Earth's magnetic field and plasma environment. This region is known as the magnetosphere. The Earth and its atmosphere seem insignificant in scale, compared to the size of the magnetosphere. The Earth holds the dynamo which generates the magnetic field, and the atmosphere

Far from the Earth, as the magnetic field weakens, the hot plasma blowing from the sun called the solar wind, pushes against the magnetic field. The magnetic field is compressed on the side toward the sun and stretched out downwind to form a long tail. Even though the magnetic field is weak, it is still capable of holding within it masses of plasma with high energies.

Energetic charged particles constantly race along magnetic field lines and smash into the upper atmosphere in the polar regions, causing the beautiful aurora. The magnetosphere is not static. It constantly stores energy, releasing it in sudden surges. These impulsive releases of energy and changes in the magnetosphere and ionosphere are important as they directly affect activities on Earth.



Coupling between the sun and the earth with solar wind, bow shock, polar cusps, radiation belts, and magnetotail.

A static picture only hints at the ever-changing nature of this system. The ultra-violet rays from the sun ionize the upper atmosphere, creating the electrically-conducting ionosphere and a source of plasma for the magnetosphere. The energy from the solar wind enters the magnetosphere ultimately creating high-energy charged particles and large-scale current systems.

Large currents generated in the magnetosphere and ionosphere influence terrestrial power systems and cause disturbances - even blackouts. During periods of geomagnetic storms, the ionosphere is "torn apart" into irregular structures, disrupting long-distance radio communication and distorting signals from satellites.

NEED FOR ACTIVE EXPERIMENTS

We are using space more and more for activities which are now viewed

as routine. Communications satellites, weather satellites, and navigation satellites, are all part of a global network, and we see their influence each time we turn on our television sets. These marvelous machines must operate in the environment of space: an environment often made hostile by high energy charged particles from the sun and the magnetosphere.

Satellite systems are becoming more sophisticated as a result of advances in microelectronics (more can be accomplished with the same power and weight), but the electronics are also more susceptible to radiation damage. The primary DoD mission on CRRES is to measure the present state of the Earth's space radiation environment, to increase the accuracy of the models of the environment, and to measure the effects of that environment on state-of-the-art microelectronic devices and solar cells.

The majority of space science investigations have been by measuring the space environment, either remotely or by instruments

placed into space, coupled with applying the equations of chemistry and physics. Unlike a situation in a laboratory, it is not possible to bend the space environment to our will and perform a repeated measurement. The environment constantly changes, and our sensors are rapidly moving on space platforms. Imagine if we could perform a controlled experiment where we actually produced a known perturbation in space and measured the effects. That would be an experiment in the true sense of the word.

The technique of active experiments has been used for many years in space science exploration. Injections of matter, electromagnetic waves, and charged-particle beams have been used with great success to probe our Earthspace. CRRES is studying Earthspace with the technique of chemical releases. This is the injection of specific substances into space environment for the purpose of a tracing, modification experiment, or simulation.

ORIGINAL PAGE IS
OF POOR QUALITY

TYPES OF CHEMICAL RELEASES

One of the most common experiments uses a release of one of a group of elements known as alkaline earth metals (familiar elements such as sodium, barium, calcium, and lithium). These elements possess two very useful properties: The first is that in the presence of sunlight, electrons are stripped away and atoms become positively charged ions. Second, is that most of these elements glow with unique colors when lit up by sunlight, and are visible. In small amounts, these types of chemicals can be used as tracers - painting the magnetic and electric fields with glowing ions. This is the same idea as when smoke is injected into wind tunnels to see the airflow pattern over airplanes; or injecting of radiopaque dyes into the body, so that certain structures will be visible on X-rays. Using larger releases, we can modify the environment with artificial plasmas, and the response of the system to this perturbation can be studied.

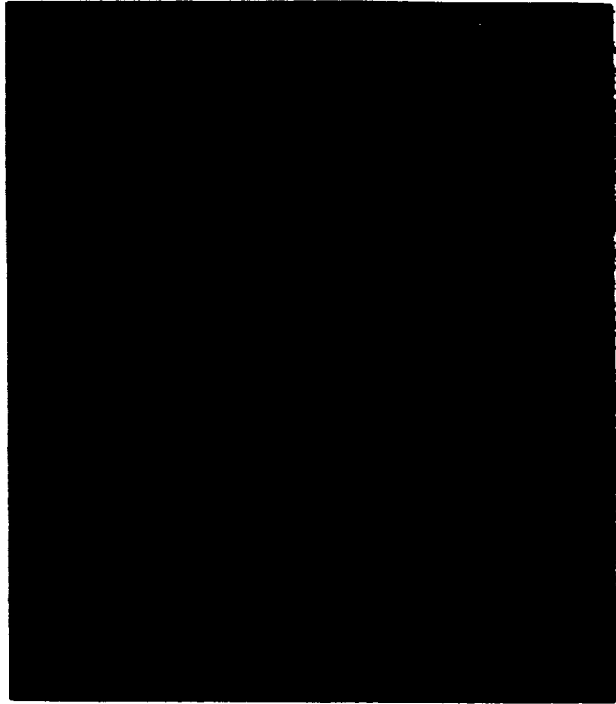
Another class of materials acts to decrease the charged particle density by chemical reactions. Common chemicals such as water vapor, hydrogen, and carbon dioxide all act to convert positively charged particles to neutral atoms. A "hole" can be made in the space plasma, which can be a significant perturbation, leading to simulations of natural processes, or can modify the ionosphere to accomplish a certain objective.

The released chemical must be in vapor form for the effects to occur. Metallic materials are heated to high temperatures, thousands of degrees, in a canister packed with thermite. This thermite burns, and the excess heat energy vaporizes the material and ejects it from the canister into a cloud. In the case of liquids and gases, again it is necessary that the material be ejected in vapor form. External or internal heaters are used to heat the material before release.

The release of substances into the environment do not pose a threat even though some of the materials such as sodium, barium, and lithium are toxic or dangerous when in contact with humans. The chemicals are released in space rather than in the biosphere, and the total amount released will be only 120 pounds. Any chemicals that settled into the biosphere would be dispersed over an area hundreds of miles in size. Calculations show that the potential concentrations in the biosphere are much less than concentrations of the same substance resulting from human activities. (One of the by products of burning coal is the release of barium which occurs in trace amounts in the coal. The total amount of barium released as a result of burning coal is estimated to be 10,000 tons per year)

ORIGINAL PAGE
OF POOR QUALITY

A photograph of barium and lithium release clouds shows the unique properties of these materials. Here the bright red is the emission from a cloud of neutral lithium atoms. Since the atoms are neutral, they are not affected by the electric and magnetic fields and they expand into a sphere.



CRRES test rocket barium and lithium releases, photographed from Duck, N.C., Nov., 1985

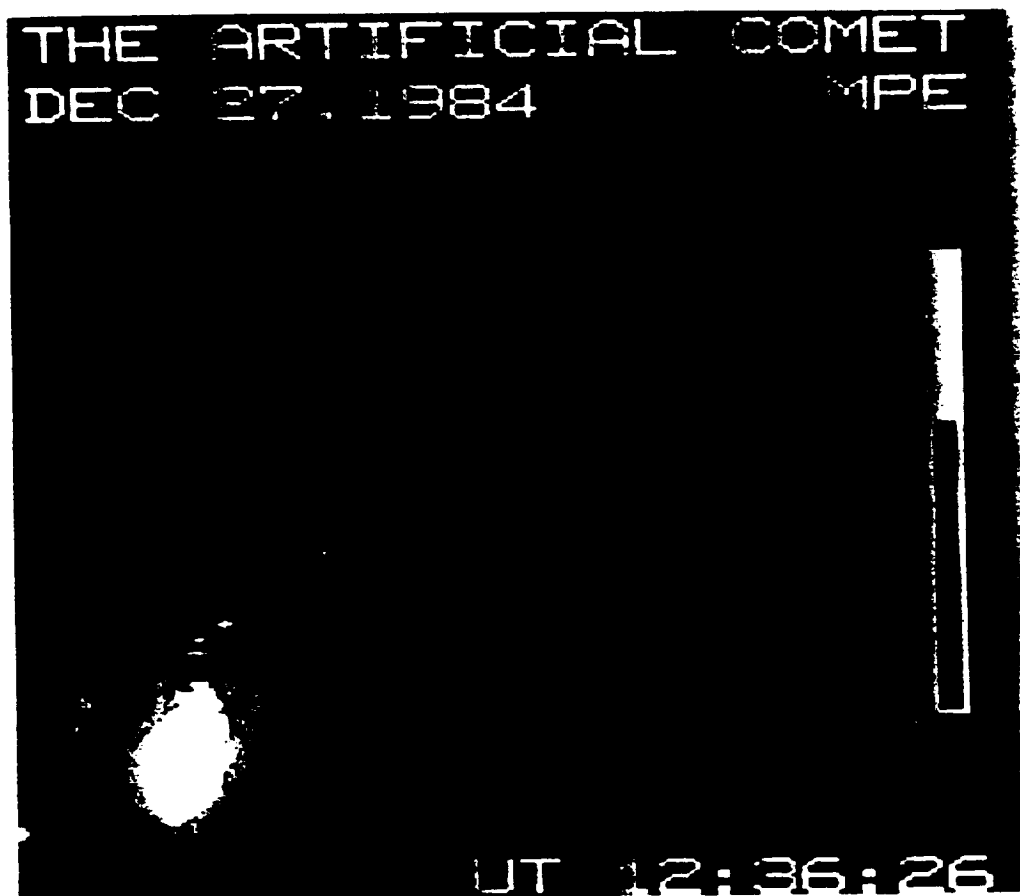
The purple-colored cloud is from barium ions. Barium neutrals become ionized by sunlight in about twenty seconds. A definite streak has formed, and the barium ions are lined up along the magnetic field. The barium has been used as a tracer to "paint a picture" of the magnetic field, which otherwise we could not see.

ORIGINAL PAGE IS
OF POOR QUALITY

CRRES is not the first mission to conduct chemical releases from a satellite. Earlier missions such as Chemically Active Material Ejected in Orbit (CAMEO) and Active Magnetospheric Particle Tracer Experiment (AMPTE), conducted releases of barium and lithium in the magnetosphere and in the solar wind. AMPTE was a joint program of the United States, The Federal Republic of Germany, Great Britain, and Argentina. It was designed to trace particle motion over large distances of Earthspace, and to simulate natural phenomena.

The photograph of a comet is really an artificial comet created by a release of barium in the solar wind. This is a "false color" rendering, with the intensity of the measured light represented by the color. Blue represents the dimmest light, and white the brightest. The resemblance to an actual comet with a coma, and the curved tail of ions, is remarkable. It illustrates the power of the chemical release technique used to study our solar system.

ORIGINAL PAGE IS
OF POOR QUALITY

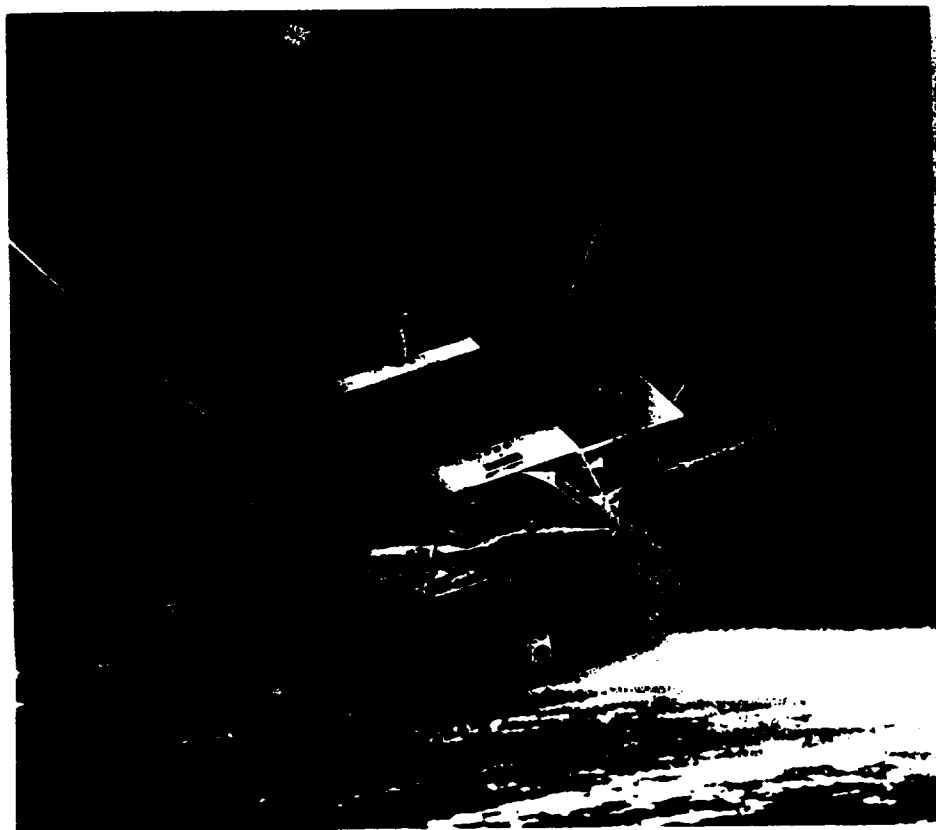


Low-light TV image of AMPTE artificial comet 4.4 min. after BA + plasma injection at 17.2 Re (Earth radii) with tail oriented along solar wind flow direction.

A satellite carrier of chemical releases starts the chemical cloud at its orbital velocity. At first, the released cloud is moving at the same speed as the satellite through space, and the atoms and ions of the release have a large amount of kinetic energy (or energy of motion). The CRRES Program will make good use of this in

conducting a series of unique experiments in the ionosphere. Other experiments will take advantage of the highly elliptical orbit of CRRES, with altitude varying between 350 kilometers and 36,000 kilometers, to reach to the outer regions of the magnetosphere for experiments studying high-energy radiation.





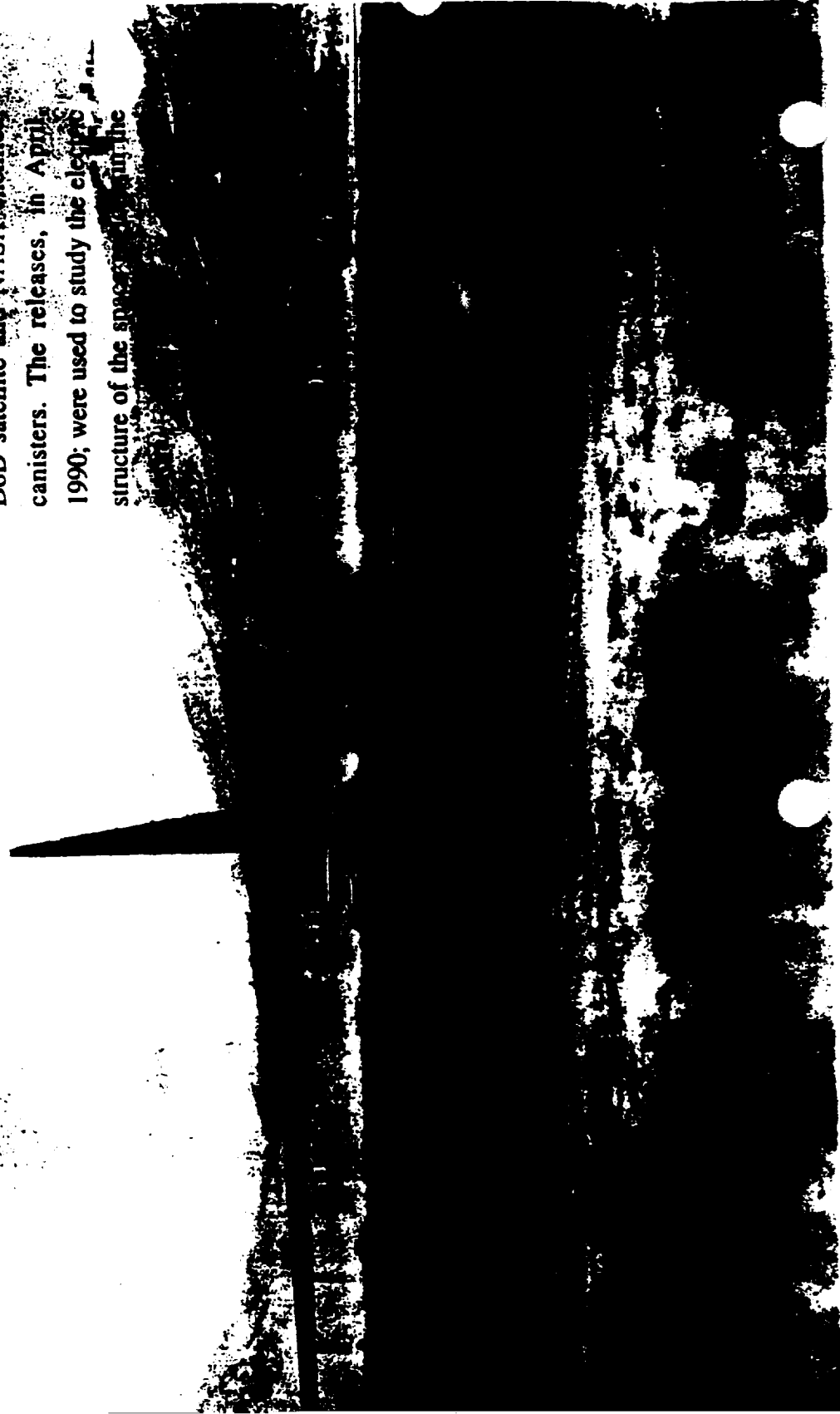
Typical flight configuration of CRRES showing booms extended and magnetic field loop antenna. (Note canister ejection ports at right.)

The artist's conception of CRRES in orbit, shows the bays holding the chemical canisters, the solar panels for electric power, and the long booms and antennas which are a part of the scientific sensor package. The orbit of the satellite will be known to a high degree of accuracy, and the scientific investigator will determine the exact point for a chemical release

experiment to occur. Twenty-five minutes prior to the actual release, the canisters are ejected from the spacecraft by springs, and at the instant of ignition, the canisters are 3 kilometers or more away from the spacecraft. Releasing at a distance protects the delicate spacecraft surfaces and instruments.

ORIGINAL PAGE IS
OF POOR QUALITY

The CRRES Program has taken a "hitchhiker" ride on the first launch of the PEGASUS rocket, to make two barium releases over Canada. The PEGASUS is a private launch vehicle development. On its first flight, PEGASUS carried an experimental DoD satellite and NASA chemical canisters. The releases, in April 1990, were used to study the electric structure of the space environment.



On April 5, 1990, as part of the
CRRES Program, the first flight of

3

the PEGSAT spacecraft which
included two canisters (similar to
those on CRRES) to make releases
over Northern Canada. The Pegasus
releases were used to study the
electric structure of the space regions
in the aurora.

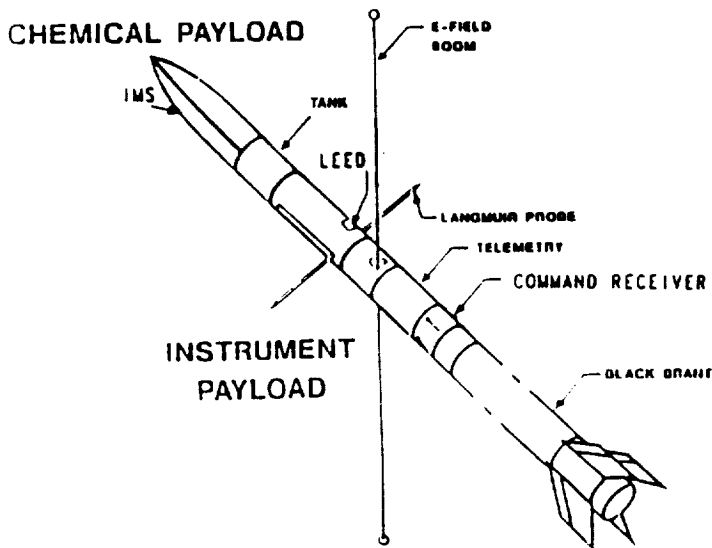


A sounding rocket is a versatile chemical release carrier if orbital velocity is not required.

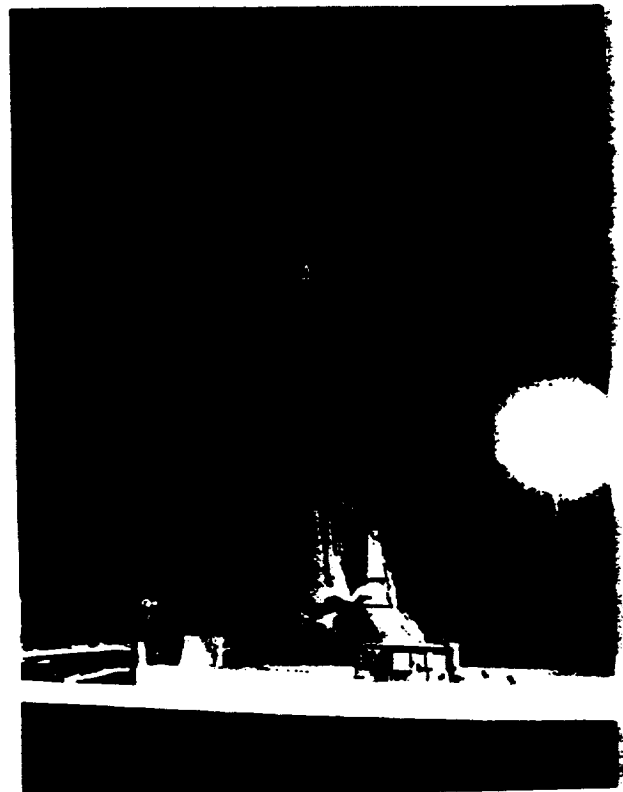
This Terrier-Black Brant was used to conduct a program of two vapor releases to create ionospheric density depletions, or "holes." A sounding rocket can carry large amounts of a chemical to create a large-scale perturbation, and in general can be more precisely targeted in space and time. For example, some of the CRRES Program experiments require targeting a release to within a circle 40 kilometers in diameter at an altitude of 250 kilometers within a time period of 10 minutes. Such accuracy is routine with a sounding rocket, but is difficult with a non-maneuverable satellite.



Inspection of Black Brant IX, Wallops Flight Facility, VA.



Sounding rocket instrumentation and diagnostics profile.



Typical launch configuration of sounding rocket on launcher, ready for a midnight launch.

CRRES PROGRAM SCHEDULE

The CRRES Program will span a period of more than one year. The

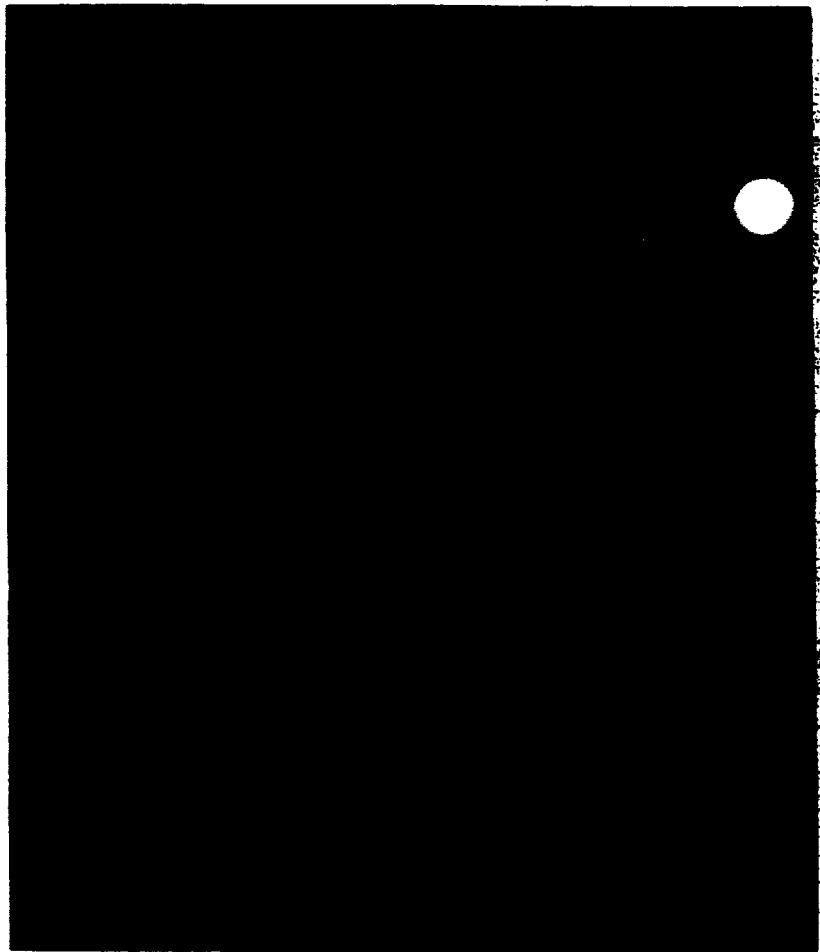
July and August, 1990, will begin a series of sounding rocket releases of an ionospheric depletion vapor from

will be launched in June, 1990. The first releases from the CRRES Spacecraft will occur in September, 1990, with a pair of releases in the vicinity of American Samoa in the South Pacific. These releases will test a theory of Critical Velocity Ionization, a process leading to an anomalously large amount of

These releases are to study the formation of irregularities in the ionosphere-a phenomenon known as Spread-F.

The CRRES Program will conclude with an ambitious campaign of satellite and sounding rocket releases

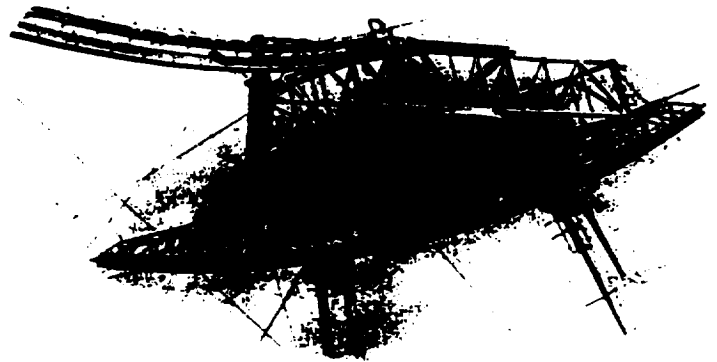
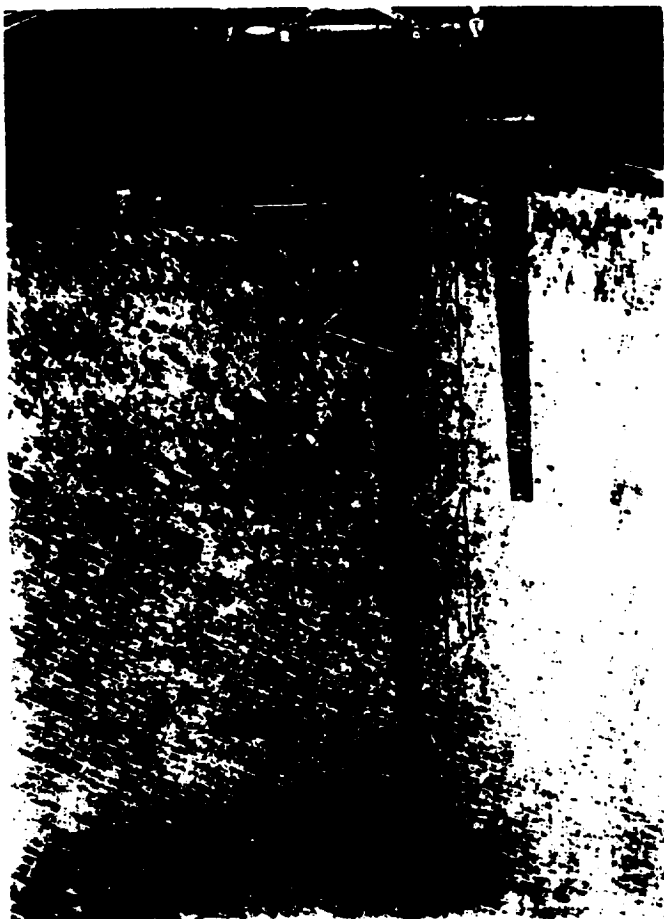
This campaign will feature releases easily visible from the Southeastern United States in the predawn hours. The objectives include studying the motions of ions for long distances along the line of force of the magnetic field and studying the response of the ionosphere to specific, controlled perturbations. "Arches of glowing ions" along the magnetic field will be made with an injection at high velocity from CRRES and will be visible to high-sensitivity cameras over a very large area of the northern and southern hemispheres. In a perturbation experiment, the release of a depletion vapor will create a "hole." This will focus the beam of a high-powered radio transmitter. Scientists will be able to study how the ionosphere reacts to high levels of energy input, which happens during a major solar flare.



Lithium release. (Taken 2 min. after release)

INTERNATIONAL SUPPORT AND COORDINATED STUDIES

The CRRES Program is international in scope, with participation by scientists from the United States, Puerto Rico, Canada, Germany, Argentina and the Soviet Union. Optical and radio observatories will be located on the Marshall Islands, on Fiji and American Samoa in the South Pacific, in Canada, on Martinique, Anguilla, Aruba, Dominica, and Guadeloupe in the Caribbean, and in Argentina, Chile and Ecuador. Multiple sites are necessary in order to measure accurately the locations of the releases by triangulation.



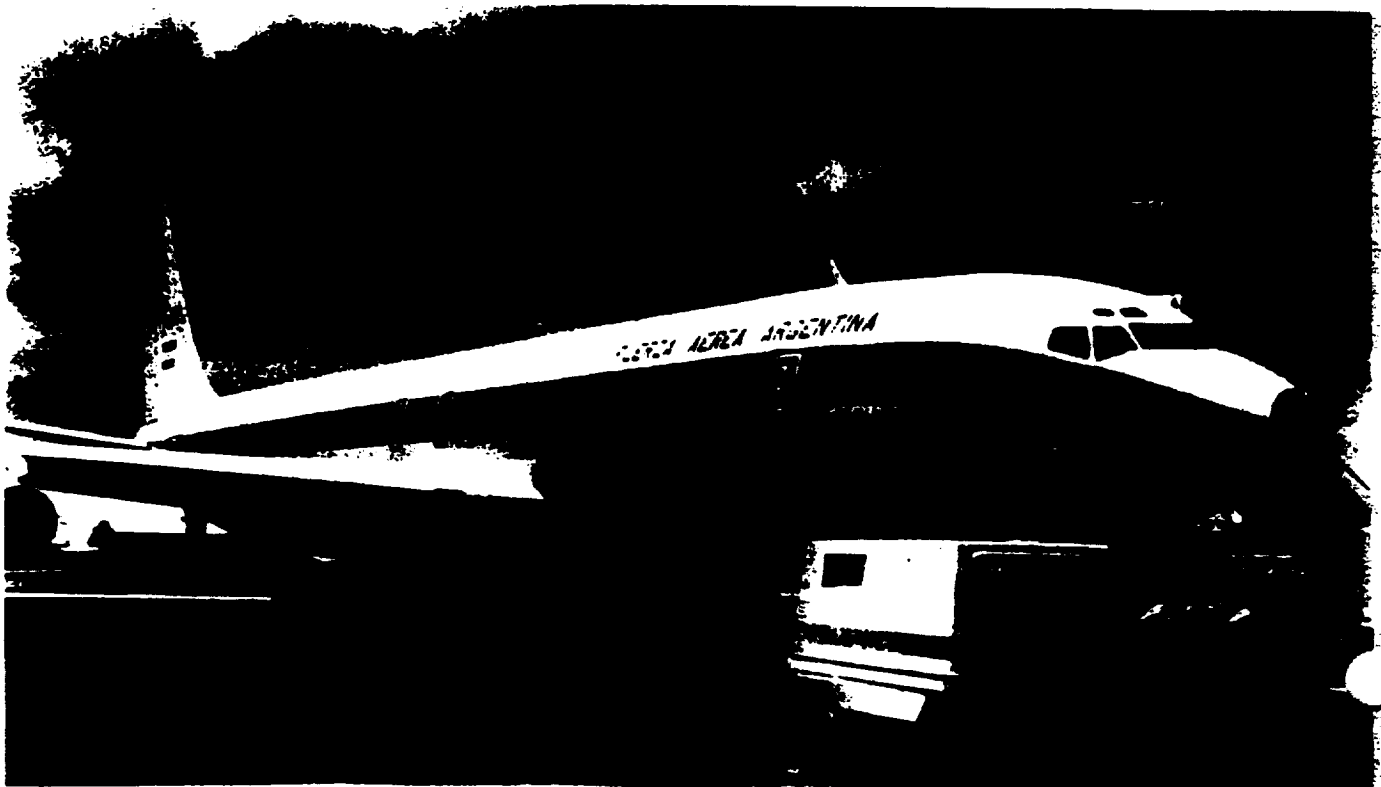
Approximate 100' long main receiving antenna and carriage house over 1000' diameter reflector, consisting of 40,000 adjustable aluminum panels. (Arecibo Observatory, Puerto Rico.)

The radar facilities at Arecibo, Puerto Rico; Kwajalein, Marshall Islands, and Millstone Hill, Massachusetts, will be used as primary diagnostic tools. These radars transmit powerful pulses of radio energy into the ionosphere and analyze the weak returns from the electrically-charged particles there. The amount and speeds of the ionospheric particles and how they are changed by a chemical release perturbation can be measured with high precision using these radars.

ORIGINAL PAGE IS
OF POOR QUALITY

Cameras carried aloft in aircraft will be operated to guard against loss of data from locally bad weather. One such aircraft, a Boeing 707 operated by the Argentine National Commission for Space Research, will provide all-important optical data from the southern end of the ion jets moving along the magnetic field lines. This and other special research aircraft from NASA, the DoD and Aeromet Inc. will contain cameras, gyroscope platforms to stabilize the images, precise navigation systems, and sophisticated computer-controlled pointing systems to aim the cameras at the right point in the sky.

The science instruments on CRRES will be important to the chemical release mission. They will be able to measure important details of the space environment. In some cases their data will be vital to making the decision whether or not to do a release experiment. The state of the ionosphere during all low altitude releases will be known from measurements by the Low Altitude Satellite Studies of Ionospheric Irregularities (LASSII) Experiment. Other charged particle and wave detectors from the DoD experiments will diagnose the state of the magnetosphere prior to the high altitude releases.



Boeing 707 Airborne Observatory. (Argentine Space Agency.)

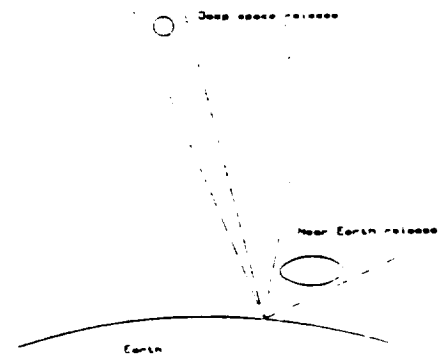
PHOTOGRAPHING CHEMICAL RELEASES

The chemical releases of the CRRES Program, particularly those using barium and lithium, will be visible to the human eye, and can be photographed with photographic equipment already owned by the serious amateur. The high-altitude releases in January-February, 1991, will be visible over the entire Western Hemisphere, and the Caribbean releases in June-July, 1991, will be visible from the entire Caribbean, northern South America, and a significant portion of the southeastern United States. This encompasses two broad categories of chemical releases: those near Earth at less than 1500 kilometers altitude (the Caribbean releases), and those in deep space, greater than 1500 kilometers altitude. The types of equipment required to photograph these two types of releases are quite different.

Near Earth chemical release photography is considerably easier and requires minimal photographic equipment. All that is needed is a camera with a fast lens and an adjustable shutter with a "T" or "B" setting for taking time exposures. Fast film, a tripod, and a cable release, complete the ensemble.

To obtain good photographs of deep space releases, fast long focal length systems are required, and clock drives to compensate for the Earth's rotation are desirable. The optical systems can be either fast telephoto lenses (very expensive), or astronomical telescopes (less expensive).

In either type of instrument the speed of the system is very important and should not be slower than F 4.0. The field of view for deep space releases should ideally be in the range 4-8 degrees, and long focal length lenses are not needed or desirable.



Chemical release photography logistics. Near-Earth is close to the 350 KM perigee. Deep-space altitudes can exceed 6 RE (Earth radii).

STANFORD UNIVERSITY
POLAR RESEARCH

A rough approximation of the brightest parts of a chemical release cloud are contained within a cloud 100 kilometers in diameter. At 500 kilometers distance, typical of a near-Earth release, this cloud subtends 6 degrees of arc. For a 35 MM camera, a lens in the range 50-70 MM is a good match. Deep space releases will subtend angles down to perhaps 0.5 degrees, but pointing uncertainties and lens speed dictate a FOV of 4-8 degrees as mentioned

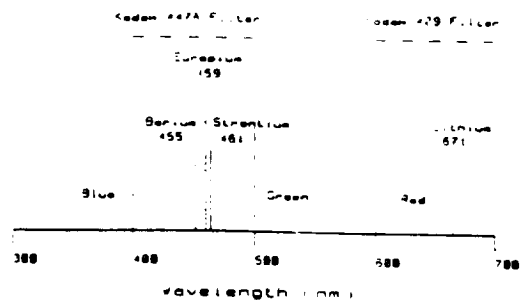
When compared to daytime photographic subjects, chemical releases are faint, diffuse objects. Photography of chemical releases is similar to photography of the aurora borealis. Fast lenses and fast films are the primary requirement, but the techniques are by no means difficult. The photograph of the red lithium cloud and the purple barium cloud shown earlier, was taken with a 35 MM camera, 50 MM lens, at a slant range of 600 kilometers.

above corresponding to a lens of 150-200 MM.



Many fast films are available for low-light level photography. For color photographs, transparency film is desirable for many reasons. Many of the fastest films are available in transparency film only. High resolution is not needed for chemical release photography, and hence small format film pushed one or two stops is more than adequate.

Scientists studying chemical releases use a large variety of instruments, including optical instruments. As a result, most releases will be accomplished under conditions of darkest skies, no moon and solar depression angles greater than at least 12, and preferably 18 degrees. For the best results, a dark sky site far from artificial lights is very desirable, but becoming increasingly hard to find. If light pollution is a problem, filters may be used to isolate the color of the chemical release being photographed, and thus improve the signal-to-noise ratio. The accompanying figure shows the positions of the resonance lines of common chemical release substances and the filters required.



Chemical release photography filters

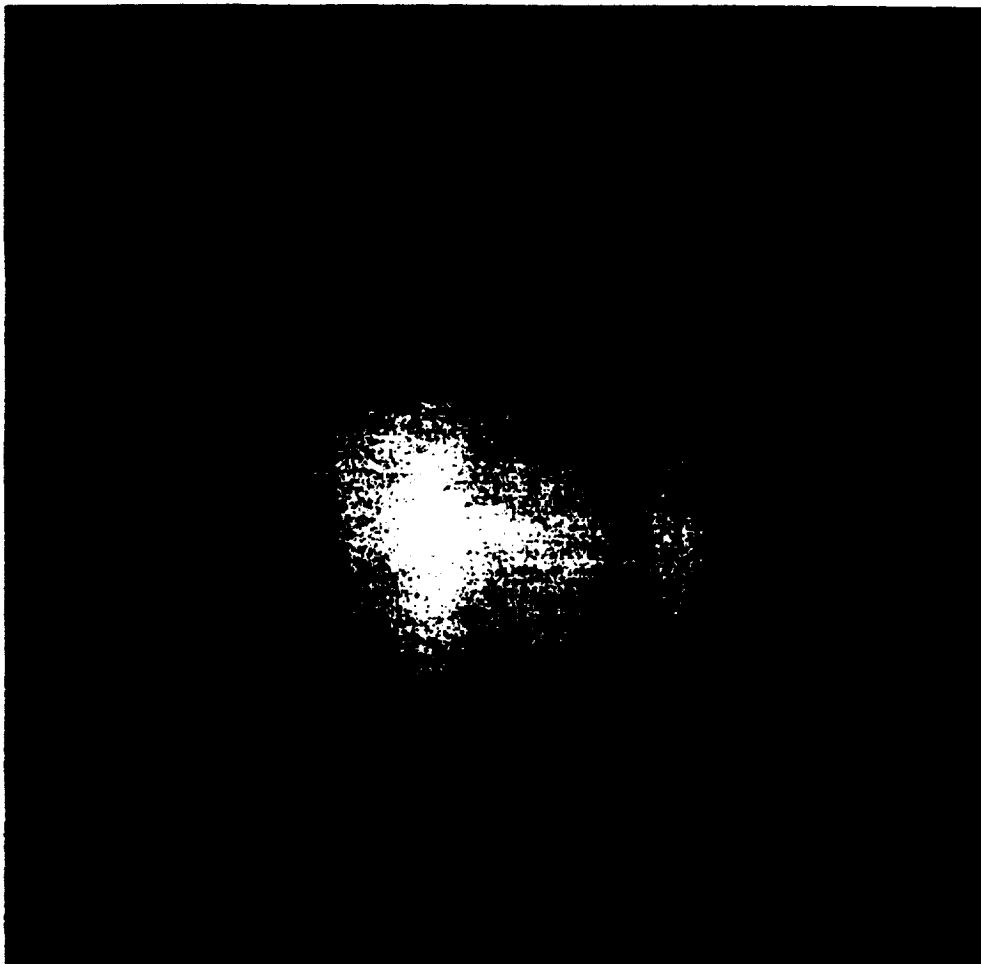
The value of a chemical release photograph to a scientific study is significantly enhanced with a few simple measurements. Obviously the time of the photograph is crucial, and either a receiver capable of tuning standard time signals such as WWV, WWVH, or CHU; or a good watch recently set to a time standard is essential. Of course, the operator must remember to log the time of each frame or post-release times with a stopwatch. The latitude and longitude of the observing location is important, and this can be determined to sufficient accuracy with USC & GS topographic maps or sectional aeronautical charts. Approximate values of the elevation and azimuth (be sure to state whether relative to true, or magnetic north) are useful, but exact pointing information comes from the star field in the photograph.

ORIGINAL PAGE IS
OF POOR QUALITY

Chemical releases are also interesting to radio amateurs and professionals studying HF and VHF propagation and scatter. A chemical release acts like a meteor trail of enhanced ion density, but with much longer duration. In another sense, the effects are like a small-scale Sporadic-E region. The chemical release scientist will be studying some of the release effects with HF bi-static paths, VHF coherent scatter radars operating near 50 and 137 mhz, and with satellite signals passing through the ion clouds to Earth-based receivers.

HOW WILL THE AMATEUR OBSERVER KNOW WHERE TO LOOK ?

NASA will make available the time and coordinates (latitude, longitude, altitude) of a release through public media such as astronomy magazines and bulletin transmissions. There are a number of software packages that allow the observer to calculate look angles in azimuth, and elevation or right ascension and declination



Barium release. Payload launched by Taurus Nike Tomahawk from Wallops Flight Facility, VA. Taken from Duck, N.C. using a 305 mm. F2.5 lens, with Kodak Ektachrome ASA 1600. (5 sec. after release)

CRRES AS A PROGRAM

CRRES is a joint program of the National Aeronautics and Space Administration, and the United States Air Force Space Systems Division. The Space Physics Division of the Office of Space Science and Applications, NASA Headquarters, Washington, D.C. 20546 is responsible for the chemical release program. The Space Systems Division of the USAF is responsible for the DoD experiment program. The CRRES Satellite and scientific campaign is managed by the CRRES Project Office, FA21, NASA Marshall Space Flight Center, Huntsville, Alabama, 35812. CRRES sounding rockets are under the management and technical direction of Wallops Flight Facility/NASA Goddard Space Flight Center. The PEGSAT spacecraft was developed by NASA Goddard Space Flight Center as a joint program of NASA and the DoD Defense Advanced Research Projects Agency (DARPA). The prime contractor for the CRRES Spacecraft is Ball Space Systems Division of Boulder, Colorado, and the chemical canisters are the responsibility of the Franklin Research Institute and General Sciences Corporation of Souderton, Pennsylvania. The launch vehicle for CRRES is the Atlas-Centaur, developed by General Dynamics Corporation. The Pegasus launch vehicle was developed by Orbital Sciences Corporation (OSC) and Hercules Aerospace Company. Coordination and documentation of the Investigators Working Group, is the responsibility of the University of Alabama Research Institute.

The Space Physics Community was shocked and saddened by the tragic and untimely death of Dr. Stanley D. Shawhan on June 21, 1990. Stan was the Director of the Space Physics Division at NASA Headquarters. His vision and determination was in large measure responsible for this chemical release science program continuing forward despite several setbacks. More than that, his gentle prodding and unfailing good humor challenged us to pause from looking through our individual knotholes and to instead view the larger prize of research in Earthspace for the benefit of all. Stan was one of the world's true gentlemen, and he will be sorely missed. This brochure is dedicated to his memory.

David L. Reasoner
June 25, 1990

Written By: Dr. David L. Reasoner
Project Scientist, CRRES NASA/MSFC

Produced By: Melanie A. Alzmann
Senior Research Project Coordinator
University of Alabama Research Institute

Edited By: Morgan W. McCook

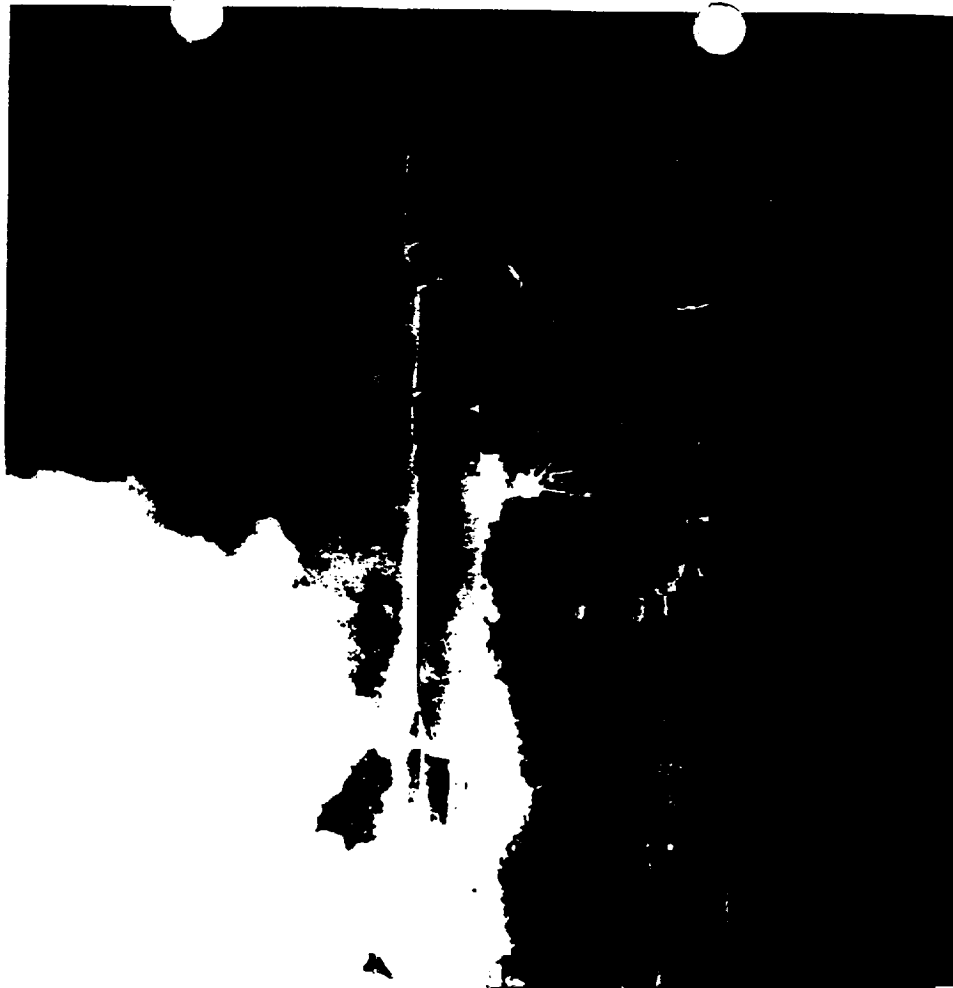
Dr. William W. Vaughan, Director
University of Alabama Research Institute
Under NASA/MSFC Contract NAS8-36955

Special Thanks: John Kieren
Ball Space Systems Division

Rick Howard
Jet Propulsion Laboratory

Jean Taylor
The University of Alabama in Huntsville

ORIGINAL PAGE IS
OF POOR QUALITY



PHOTOGRAPHS NASA except:

Cover 1, 2, & 4

Van Allen Belt

Aurora Pg. 2

Barium/Lithium Release Pg. 7

AMPTE Pg. 8

CRRES Pg. 9 & Pg. 10

PEGSAT Pg. 11

Hal DeHaven, Los Alamos Nat'l Labs

Ball Space Systems Division

Hal DeHaven, Los Alamos Nat'l Labs

John Kierein, Ball Space Systems Division

Dr. Arnoldo Valenzuela, Max-Planck Institute

Ball Space Systems Division

Furnished by OSC

NASANational Aeronautical and
Space Agency**Report Document Page**

1. Report No.	2. Government Accession No.	3. Recipient's Catalog No.	
4. Title and Subtitle "Chemical Release and Radiation Effects Experiments Advanced Planning and Coordination"		5. Report Due May 30, 1991	6. Performing Organization Code Research Institute, UAH
7. Author(s) William W. Vaughan Melanie Alzmann		8. Performing Organization Report No.	
9. Performing Organization Name and Address UAH Research Institute RI E-47 Huntsville, AL 35899		10. Work Unit No. Delivery Order 0094	
12. Sponsoring Agency Name and Address National Aeronautics and Space Administration George C. Marshall Space Flight Center Marshall Space Flight Center, AL 35812		11. Contract or Grant No. NAS8-36955, D.O. 94	
		13. Type of report and Period covered Final Technical Report May 31, 1990 April 4, 1991	
		14. Sponsoring Agency Code	
15. Supplementary Notes			
16. Abstract This report summarizes the efforts conducted to provide assessments and planning support for the Chemical Release and Radiation Experiment (CRRES). Included are activities regarding scientific working group and workshop development including the preparation of descriptive information on the CRRES Project.			
17. Key Words (Suggested by Authors(s)) Radiation Ionosphere Upper Atmosphere Magnetic Fields		18. Distribution Statement Unclassified	
19. Security Class. (of this report) Unclassified	20. Security Class. (of this page) Unclassified	21. No. of pages 33	22. Price

1

2

3