

1995118847

N95-25267

40914
p. 8

**JPL Workshop: "A Decade of Neural Networks:
Practical Applications and Prospects"
May 11th-13th, 1994**

**Neural Networks: Application to Medical Imaging
Laurence P. Clarke, Ph.D., FAAPM, FSNM
Professor of Radiology and Physics**

**College of Medicine
and
H. Lee Moffitt Cancer Center and Research Institute
University of South Florida
Tampa, FL 33612-4799**

RESEARCH MISSION

- Development of computer assisted diagnostic (CAD) methods for improved diagnosis of medical images including digital x-ray sensors and tomographic imaging modalities.
- The CAD algorithms include advanced methods for adaptive nonlinear filters for image noise suppression, hybrid wavelet methods for feature segmentation and enhancement and high convergence neural networks for feature detection and VLSI implementation of NN for real time analysis. These methods are designed for fully automatic CAD methods that are operator, image and sensor independent for universal application for medical image analysis.
- Implementation of CAD methods on hospital based picture archiving computer systems (PACS) and information networks for central and remote diagnosis i.e. for cost effective health care delivery and standardization of diagnosis.
- Collaboration with defense and medical industry, NASA and Federal Laboratories in the area of dual use technology conversion from defense or aerospace to medicine .

SPECIFIC PROJECTS INVOLVING NEURAL NETWORKS

•Development of computer assisted diagnostic (CAD) methods for breast cancer screening using digital mammography. Projects include NN of different architecture tailored for each project:

1. Automatic detection of microcalcification
2. Detection of masses or parenchymal tissue distortion
3. Recognition of normal vs abnormal mammograms

•Development of nuclear medicine imaging methods for detection of beta particles used for antibody therapy or imaging of positron emitters.

1. Order statistic neural network for image resolution restoration based on systems physical response characteristics

•Development of MRI segmentation techniques using backpropagation and cascade correlation neural networks for tissue characterization.

1. Automatic segmentation of tumor volumes
2. Surgery simulation

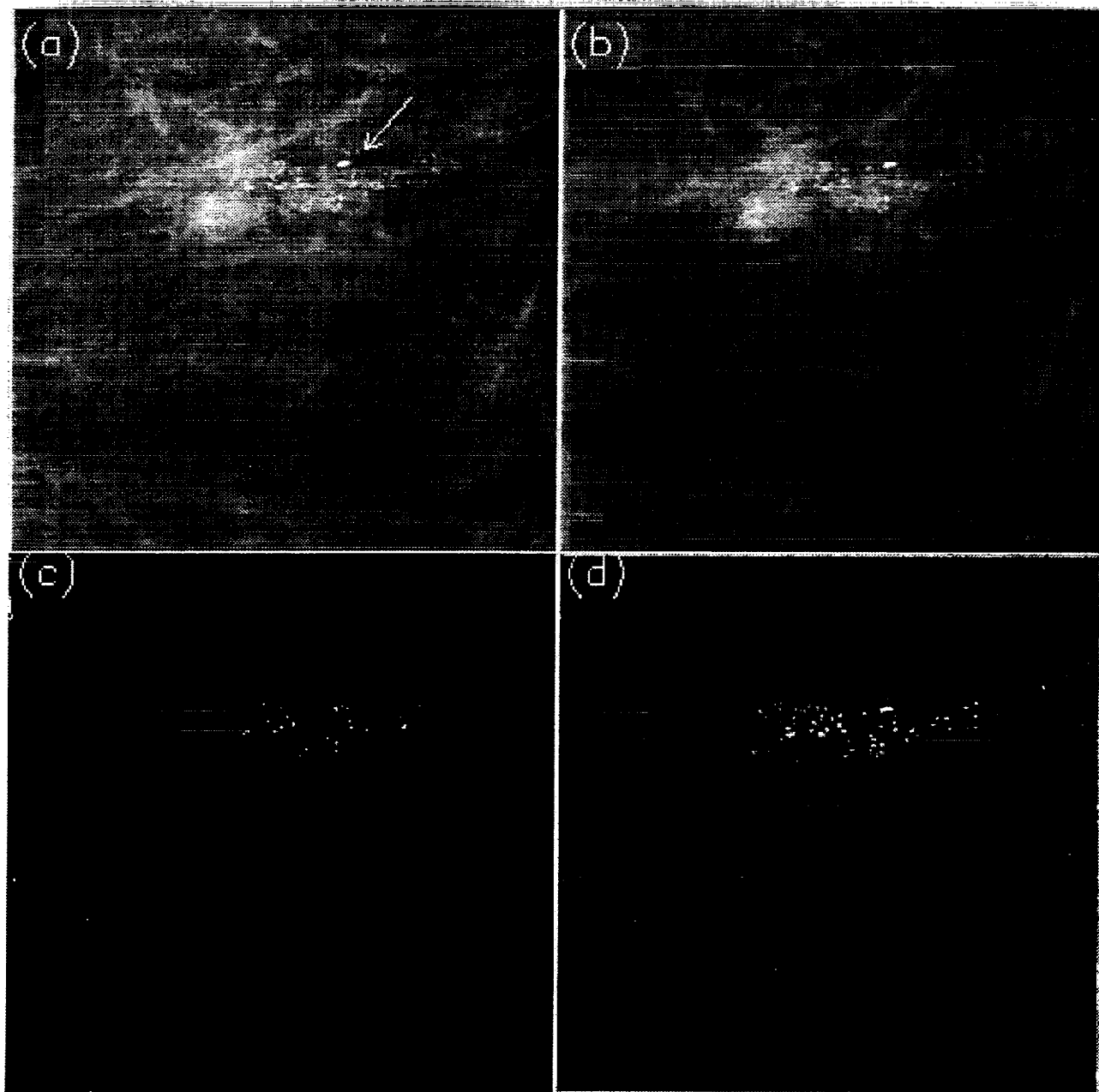


Fig. 1. (a) Section of digitized mammogram with a calcification cluster indicated by arrow
(b) Smoothed image using the AQSF.
(c) Calcification segmentation using a two-channel TSWT
(d) Calcification segmentation using a three-channel DMF; the morphology of the calcifications is better preserved supporting our proposed work.

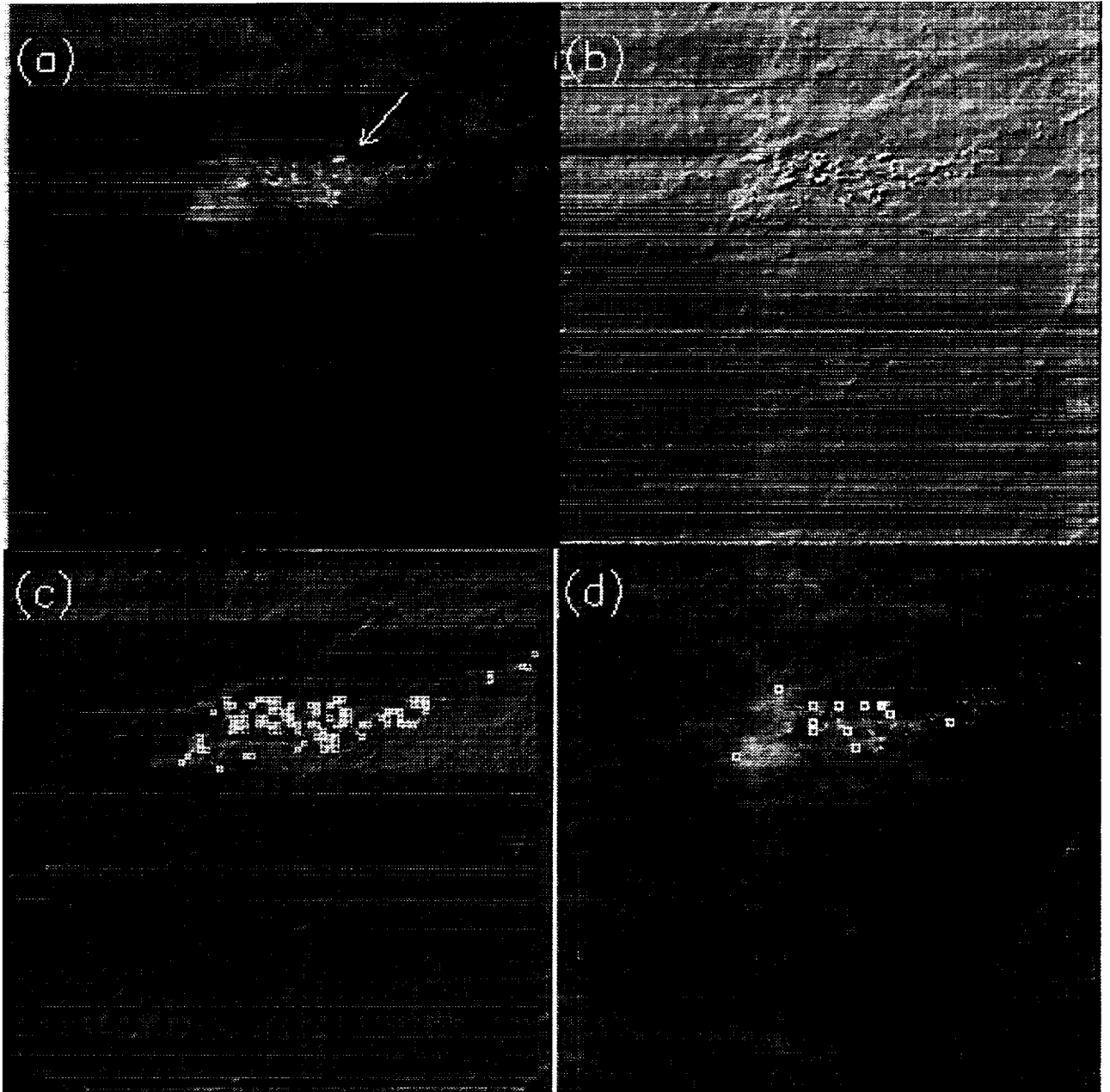


Fig. 2. (a) Section of digitized mammogram with a calcification cluster indicated by arrow
 (b) Enhanced image using the AMNF-TSWT filter (linear operation); the extent of the cluster is better defined.
 (c) Calcification detection indicated by squares using the enhanced image as input to the ANN.
 (d) Calcification detection indicated by squares using the unprocessed image as input to the ANN; several FN detections are observed.

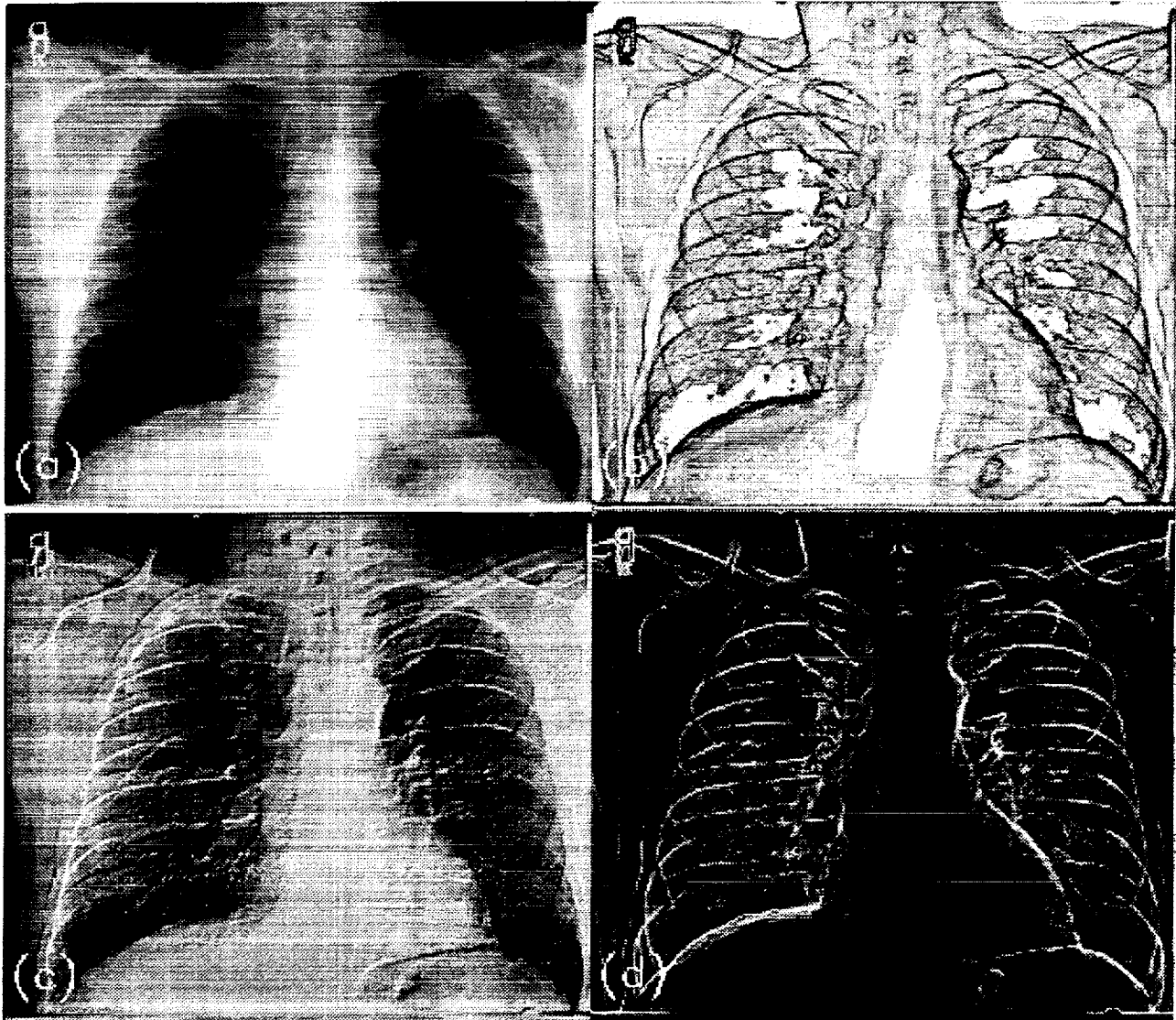


Fig. 3. (a) Digitized unprocessed chest x-ray.
(b) Enhancement by adaptive multistage nonlinear filter with an order statistic operation.
(c) Enhancement by adaptive multistage nonlinear filter with a linear operation.
(d) Processing by a tree-structured nonlinear filter and a dispersion edge detector.

CURRENT COLLABORATORS: FEDERAL/INDUSTRY

1. NASA Jet Propulsion Laboratory (JPL), Pasadena, California. Neuroprocessing and Analogue Computing Devices (NACD).
Topic: Real time analysis of digital mammograms using VLSI implementation of NNs.
2. NASA Ames. Search for extraterrestrial intelligence (SETI), Moffett Field, California. High Resolution Microwave Survey Project.
Topic: Detection of weak signals in digital mammograms for microcalcification and tumor detection.
3. DOD. Navy Surface Warfare Center (NSWC), Dahlgren, Virginia. Advanced Computations Technology Group.
Topic: Pattern Recognition methods in digital mammography for identification of suspicious areas.
4. E-Systems. Garland Division, Dallas, Texas. Information Technology Systems.
Topic: Algorithm design and real time parameter optimization in digital mammography.
5. Fischer Imaging, Denver, Colorado & Nanoptics, Gainesville, Florida.
Topic: High resolution direct x-ray digital detection.

REFERENCES

- Hall LO, Bensaid A, Clarke LP, Velthuizen RP, Silbiger ML. A Comparison of Neural Network and Fuzzy Clustering Techniques in Segmenting Magnetic Resonance Images of the Brain. *IEEE Transactions on Neural Networks* 1992; 3(5):672-682.
- Qian W, Kallergi M and Clarke LP. Order Statistic-Neural Network Hybrid Filters for Gamma Camera Image Restoration. *IEEE Trans. Med. Imag.* 1993; 12(1):59-64.
- Clarke LP, Velthuizen RP, Phuphanich S, Silbiger ML, Schellenberg JD. MRI: Stability of Three Supervised Segmentation Techniques. *Magnetic Resonance Imaging* 1993; 11:95-106.
- Bezdek JC, Hall LO and Clarke LP. *Invited Review*: MR Image Segmentation Techniques Using Pattern Recognition. *Medical Physics* 1993, 20(4):1033-1048.
- Lucier BJ, Kallergi M, Qian W, DeVore RA, Clark RA, Saff EB, and Clarke LP. Wavelet compression and segmentation of digital mammograms. *J Dig Imag* 1993 (to be published).
- Qian W, Clarke LP, Kallergi M and Clark R. Tree-structured nonlinear filters in digital mammography. *IEEE Trans. Med. Imag.* (accepted, to be published March 1994).
- Qian W, Clarke LP, Li HD, Kallergi M, Clark RA and Silbiger ML. Digital Mammography: M-Channel Quadrature Mirror Filters for Microcalcification Extraction. *Computerized Medical Imaging and Graphics* (accepted for publication 1993).
- Clarke LP, Blaine GJ, Doi K, Yaffe MJ, Shtern F, Brown GS, Winfield DL and Kallergi M. Digital Mammography, Cancer Screening: Factors Important for Image Compression. *Proc. of the Space and Earth Science Data Compression Workshop: NASA Conf. Publications (Invited Paper)*, Snowbird, Utah, April 2, 1993.
- Richards DW, Janesick JR, Velthuizen RP, Qian W and Clarke LP. Enhanced Detection of Normal Retinal Nerve-Fiber Striations Using a Charge-Coupled Device and Digital Filtering. *Graefe's Archive for Clinical and Experimental Ophthalmology*, 1993, 231:595-599.
- Yang Z, Kallergi M, Qian W, Clark RA, Lucier BJ, DeVore R and Clarke LP. Digital mammogram compression and processing with hyperbolic and adaptive wavelets, *IEEE TMI* (submitted Jan. 1994).
- Qian W, Clarke LP, Kallergi M. Wavelet-based neural network for multiresolution restoration of bremsstrahlung images. *IEEE Trans. Med. Imag.* (submitted November 1993).
- Clarke LP, Qian W, Kallergi M, DeVore R and Lucier B. *Invited Review*: Review of wavelet applications in medical imaging, *Med. Phys.* (to be submitted March 1994).
- Li HD, Kallergi M, Clark RA, Jain VK and Clarke LP. Markov random field model for tumor detection in digital mammography. *IEEE Trans. in Med. Imag.* (submitted for publication Jan. 1993).
- Priebe CE, Solka JL, Lorey RA, Rogers GW, Poston WL, Kallergi M, Qian W, Clarke LP and Clark RA, 1993. The application of fractal analysis to mammographic tissue classification. *Cancer Letters* (submitted).
- Clarke LP, Zheng B and Qian W. Artificial Neural Network for Pattern Recognition in Mammography. *Invited Paper by World Congress on Neural Networks* San Diego, CA, June 4-9, 1994.
- Clarke LP, Kallergi M, Qian W, Li HD, Clark RA and Silbiger ML. Tree-structured nonlinear filter and wavelet transform for microcalcification segmentation in digital mammography. *Cancer Letters* 1994 (to be published).