

NASA/TM—1998-206292



Fuel Injector Patterning Evaluation in Advanced Liquid-Fueled, High Pressure, Gas Turbine Combustors, Using Nonintrusive Optical Diagnostic Techniques

R.J. Locke
NYMA, Inc., Brook Park, Ohio

Y.R. Hicks, R.C. Anderson, and M.M. Zaller
NASA Lewis Research Center, Cleveland, Ohio

February 1998

The NASA STI Program Office . . . in Profile

Since its founding, NASA has been dedicated to the advancement of aeronautics and space science. The NASA Scientific and Technical Information (STI) Program Office plays a key part in helping NASA maintain this important role.

The NASA STI Program Office is operated by Langley Research Center, the Lead Center for NASA's scientific and technical information. The NASA STI Program Office provides access to the NASA STI Database, the largest collection of aeronautical and space science STI in the world. The Program Office is also NASA's institutional mechanism for disseminating the results of its research and development activities. These results are published by NASA in the NASA STI Report Series, which includes the following report types:

- **TECHNICAL PUBLICATION.** Reports of completed research or a major significant phase of research that present the results of NASA programs and include extensive data or theoretical analysis. Includes compilations of significant scientific and technical data and information deemed to be of continuing reference value. NASA's counterpart of peer-reviewed formal professional papers but has less stringent limitations on manuscript length and extent of graphic presentations.
- **TECHNICAL MEMORANDUM.** Scientific and technical findings that are preliminary or of specialized interest, e.g., quick release reports, working papers, and bibliographies that contain minimal annotation. Does not contain extensive analysis.
- **CONTRACTOR REPORT.** Scientific and technical findings by NASA-sponsored contractors and grantees.

- **CONFERENCE PUBLICATION.** Collected papers from scientific and technical conferences, symposia, seminars, or other meetings sponsored or cosponsored by NASA.
- **SPECIAL PUBLICATION.** Scientific, technical, or historical information from NASA programs, projects, and missions, often concerned with subjects having substantial public interest.
- **TECHNICAL TRANSLATION.** English-language translations of foreign scientific and technical material pertinent to NASA's mission.

Specialized services that complement the STI Program Office's diverse offerings include creating custom thesauri, building customized data bases, organizing and publishing research results . . . even providing videos.

For more information about the NASA STI Program Office, see the following:

- Access the NASA STI Program Home Page at **<http://www.sti.nasa.gov>**
- E-mail your question via the Internet to help@sti.nasa.gov
- Fax your question to the NASA Access Help Desk at (301) 621-0134
- Telephone the NASA Access Help Desk at (301) 621-0390
- Write to:
NASA Access Help Desk
NASA Center for AeroSpace Information
800 Elkridge Landing Road
Linthicum Heights, MD 21090-2934



Fuel Injector Patterning Evaluation in Advanced Liquid-Fueled, High Pressure, Gas Turbine Combustors, Using Nonintrusive Optical Diagnostic Techniques

R.J. Locke
NYMA, Inc., Brook Park, Ohio

Y.R. Hicks, R.C. Anderson, and M.M. Zaller
NASA Lewis Research Center, Cleveland, Ohio

Prepared for the
1997 JANNAF 34th CS/PSHS/APS Joint Meeting
sponsored by the Chemical Propulsion Information Agency
West Palm Beach, Florida, October, 1997

National Aeronautics and
Space Administration

Lewis Research Center

This report is a formal draft or working paper, intended to solicit comments and ideas from a technical peer group.

Available from

NASA Center for Aerospace Information
800 Elkridge Landing Road
Linthicum Heights, MD 21090-2934
Price Code: A03

National Technical Information Service
5287 Port Royal Road
Springfield, VA 22100
Price Code: A03

FUEL INJECTOR PATTERNATION EVALUATION IN ADVANCED LIQUID-FUELED, HIGH PRESSURE, GAS TURBINE COMBUSTORS, USING NONINTRUSIVE OPTICAL DIAGNOSTIC TECHNIQUES

R. J. Locke
NYMA, Inc.
Brook Park, Ohio 44142

Y. R. Hicks, R. C. Anderson, and M. M. Zaller
NASA Lewis Research Center
Cleveland, Ohio 44135

ABSTRACT

Planar laser-induced fluorescence (PLIF) imaging and planar Mie scattering are used to examine the fuel distribution pattern (patterning) for advanced fuel injector concepts in kerosene burning, high pressure gas turbine combustors. Three diverse fuel injector concepts for aerospace applications were investigated under a broad range of operating conditions. Fuel PLIF patterning results are contrasted with those obtained by planar Mie scattering. Further comparison is also made for one injector with data obtained through phase Doppler measurements. Differences in spray patterns for diverse conditions and fuel injector configurations are readily discernible. An examination of the data has shown that a direct determination of the fuel spray angle at realistic conditions is also possible. The results obtained in this study demonstrate the applicability and usefulness of these nonintrusive optical techniques for investigating fuel spray patterning under actual combustor conditions.

INTRODUCTION

The abatement of pollutants generated by liquid-fueled gas turbine combustors is increasingly becoming a major issue to government agencies and industries faced with meeting new and impending environmental restrictions and regulations. Essential to meeting these demands, and of critical concern in the design of advanced high pressure liquid-fueled combustors and fuel injectors, is a detailed understanding of the fuel/air mixing process, droplet size and velocity distribution, and fuel density distribution pattern (patterning) encountered in these high pressure combustor concepts. Current diagnostic methods are inadequate to address these issues in the complex flowfields and harsh conditions encountered in present day combustors. Future designs present even greater obstacles with mass flows expected to reach nearly 200 lb/s and pressure ratios ranging from 60:1 to 100:1. Recent advances in laser technology and optical diagnostic techniques^{1,2} have provided the tools, and the latest window technology has provided the capability to explore this previously inaccessible and harsh environment.

Until recently, actual combustor flowfields were inaccessible to highly sensitive and specific optical probing techniques. Most previous optical measurements were accomplished using simple gaseous flames at atmospheric³ or at low pressure approaching 0.19 psia (1.3 kPa)⁴. Only recently have investigations been conducted at higher pressure^{5,6} but these have been limited to approximately 147 psia (1.01 MPa) and were restricted to simple gaseous fuels. Later experiments were performed with simple liquid fuels in flames approaching 147 psia (1.01 MPa)⁷, and in internal combustion engines near 294 psia (2.03 MPa)⁸. More recently, optical probing of simple gaseous flames, but at greatly elevated pressures near 882 psia (6.08 MPa)⁹ have met with some success. Previous PLIF studies employed exciplex fluorescence techniques¹⁰ to elucidate liquid spray behavior but had limited application due to restrictions imposed by temperature limitations and the quenching of the excited state complex by molecular oxygen. Other studies incorporated variants of both PLIF and PDPA¹¹ in which a liquid spray, comprised of methanol doped with fluorescein was examined for patterning but these experiments were executed under non-combusting,

Approved for public release, distribution is unlimited.

atmospheric pressure conditions. Only very recently have experiments been implemented which utilize thin film window cooling technology that allows nonintrusive diagnostics to probe and observe in real-time, actual combustor environments with kerosene-based fuels at pressures and temperatures approaching 220 psia (1.5 MPa) and 3100°F (2000 K) respectively.^{12,13}

At NASA Lewis, ongoing efforts are underway to integrate a number of advanced diagnostic methods to study the performance of next generation combustors and combustor subcomponents. In this study, PLIF imaging of fuel and planar Mie scattering from fuel droplets are used to examine the fuel patterning resultant from advanced fuel injector concepts for liquid fuel burning, high pressure gas turbine combustors for aerospace applications. Three different fuel injector concepts fitted into unique, optically accessible flametubes were investigated. These injectors were examined under a broad range of operating conditions.

A comparison of patterning results is made for each of three different measurement techniques. Differences in spray patterns at different conditions and for distinct fuel injector configurations are readily observable. An examination of the data has also shown that a direct determination of spray angle at realistic conditions is possible. The current study is the first application of the PLIF technique to achieve fuel patterning using a kerosene-based fuel at these extreme conditions of high mass flow, pressure, and temperature. Furthermore, the results obtained in this study demonstrate the applicability and usefulness of non intrusive optical techniques for investigating fuel spray patterning under actual combustor conditions.

EXPERIMENTAL APPARATUS AND PROCEDURES

FACILITIES

Three different fuel injectors were installed in two unique, optically accessible combustors. The first is an 8.5" x 8.5" (21.6 cm x 21.6 cm) radially-staged gas turbine combustor called a sector rig, and is designed for testing larger, multi-component, injector systems. The second combustor is a 3" x 3" (7.6 cm x 7.6 cm) flametube designed for single component injector testing. Typical rig operating conditions for this series of experiments ranged from inlet temperatures of 500 °F - 1000 °F (533 K - 810 K), inlet pressures of 80 psia - 250 psia (0.55 MPa - 1.7 MPa), and mass flows of 0.7 lb/s to 1.7 lb/s (0.32 kg/s - 0.77 kg/s) for the flame tube, and 2.5 lb/s to 8 lb/s (1.13 kg/s - 3.63 kg/s) for the sector rig. Equivalence ratios (ϕ) for both combustors ranged from 0.30 to 0.60. The window housings are equipped with UV-grade fused silica windows that measure 1.5" (3.8 cm) axially, 2" (5.1 cm) in the cross flow direction, and 0.5" (1.3 cm) thick. To maintain structural integrity at test conditions, the inner surface of the windows is cooled by a thin film of nitrogen, resulting in inner surface window temperatures typically less than 1300°F (977 K).

The exit plane of each injector projected approximately 0.25" (6 mm) into the window viewing area. The optical detection coordinate system defines x as the azimuthal or horizontal direction with positive x to the right when looking upstream. z is the axial coordinate, with z = 0 at the injector exit plane and positive z in the downstream direction. y is the radial or vertical coordinate with positive values above the rig center or zero point.

OPTICS AND INSTRUMENTATION

A Continuum ND 81-C Nd:YAG laser pumping a ND 60 dye laser/UVX ultra-violet wavelength extension system was used to generate the wavelengths necessary to simultaneously excite the fuel and to elicit Mie scattering. The 10 Hz, 750 mJ YAG output at 532 nm pumped the dye laser operating with Rhodamine 590 dye, resulting in 190 mJ output at 563 nm. The UVX doubled the dye output to obtain the appropriate 281.5 nm UV output, which was maintained at 15 mJ throughout these experiments. A pellinbroca prism separated the doubled dye output from the residual dye fundamental. The bandwidth of the selected wavelength was 1.0 cm^{-1} as measured by a Burleigh UV wavemeter, with pulse widths of 7 ns at full width half maximum (FWHM).

The laser beam transport system, described in detail elsewhere,¹⁴ delivered the laser beam to the test cell by a series of remotely controlled mirrors. Since the UV laser beam has a divergence of only ~5 mrad, it was allowed to freely expand over the full distance of the optical path which ranged from 40 ft (12 m) for the flametube to 82 ft (25 m) for the sector rig. The laser beam was formed into a sheet using a 3000 mm focal length cylindrical lens and was directed vertically into the optically accessible combustor. The sheet size at the laser focal volume was approximately 0.87" (22 mm) by 0.012" (0.3 mm).

Figure 1 illustrates the optical detection setup at the test section. The fuel fluorescence and planar Mie scattering were collected simultaneously normal to the incident laser sheet using two Princeton Instruments gated, intensified, 16 bit, CCD (ICCD) cameras, each with a 384 x 576 pixel array. The intensifiers, synchronously triggered with the laser pulse, had a gate width of 75 ns. The cameras were equipped with Nikon 105 mm f/4.5 UV Nikon lenses focusing each camera on a plane coinciding with the incident laser sheet passing through the test section center (our defined zero point, or $x = 0$ position). The filters used for collecting the fuel fluorescence comprised a WG-305 glass filter and a narrow band interference filter with a peak transmittance of 16% at 315 nm and a FWHM of 10.6 nm. The Mie scattering was imaged through an interference filter centered at 283 nm with a 2 nm FWHM and transmission of 6%. Due to weak signals, the fluorescence camera's array was binned into blocks of 8 x 8 pixels, effectively reducing the array size to 48 x 72 super-pixels. All images presented here were collected by on-chip averaging the fluorescence or Mie signal on the detector array for fifty laser shots. The incident laser sheet was then traversed across the flow in 1 mm increments from -20 mm to +20 mm about the defined zero point resulting in 41 discrete images for that particular injector and condition.

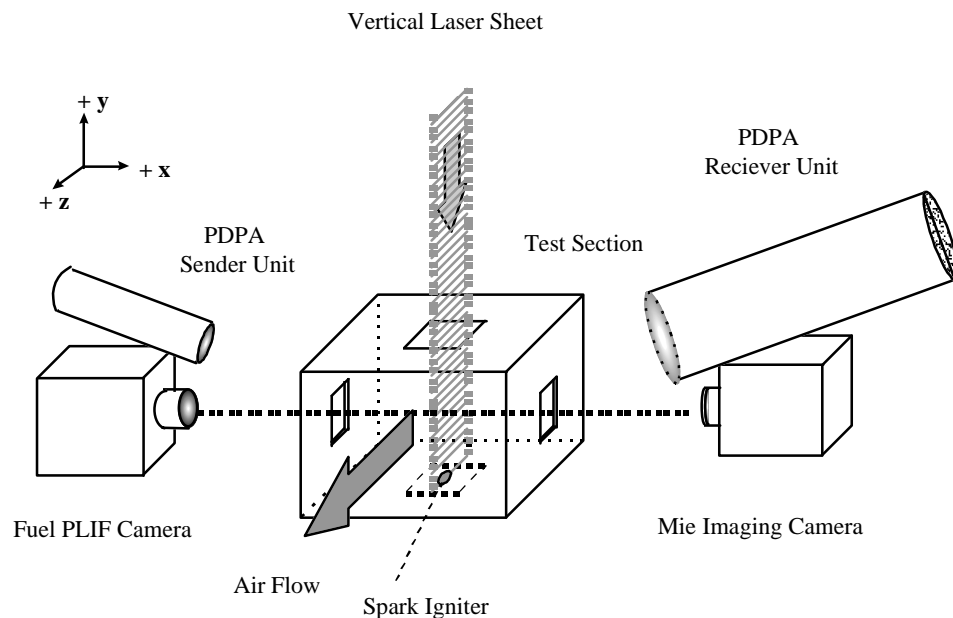


Figure 1. Experimental setup for simultaneous PLIF and Mie Imaging, and PDDPA Analysis.

It was necessary to periodically clean the detector windows during testing of one of the fuel injectors due to a build-up of fuel deposits. This was accomplished by remotely ablating the deposits from both detector windows by sweeping a focused 50 mJ sheet of 532 nm output provided by a Continuum Surelite Nd:YAG laser. The laser insertion window was cleaned by the 281.5 nm incident laser sheet which was scanned continuously over the window's width.

Figure 1 also shows the placement of a two-component Aerometrics Phase/Doppler particle analyzer (PDPA) used to measure the light refractively scattered by the fuel droplets (30° forward scatter). Both the transmitter and receiver were aligned 15° from a horizontal plane to maximize the measurement locations

accessible within the windowed test section. Transmitting and receiving optic focal lengths were both 500 mm, and the transmitter beam separations were 40 mm. Droplet size, velocity and density distribution measurements were acquired by moving the measurement location along the propagation direction of the transmitter. Since the PDPA makes point measurements from a small region, in order to resolve large scale flow structure, the probe volume was remotely traversed throughout the accessible flowfield to characterize the spray.

IMAGE ANALYSIS

A color bar comprising twenty-five colors, plus black (low intensity) and white (high intensity) is used for image analysis purposes. Each color accounts for approximately 10 counts in the linear span from 0 to 255 counts of signal. Black represents the lowest two counts in signal while white represents the highest two signal values. Although the images are corrected for random high noise spikes, they are not corrected for laser sheet energy distribution.

Each image in the subsequent figures shows the fuel patternation from the viewpoint of "looking" upstream toward the fuel injector (cross flow, or end-on views). These views were obtained by configuring the set of 41 z-y plane images accrued at each test point into a three dimensional array called an image stack. The points between successive images in the stack are interpolated to obtain a smoothed 3-d profile. The resultant image block can then be sliced and observed from any chosen perspective. An example of this process is shown in figure 2. The left hand side of the figure are fuel PLIF images obtained using the LDI injector fitted into the sector rig. For the purpose of demonstration and for simplicity, only a few selected z-y plane images are shown. The right hand side of figure 2 shows the resultant composite cross flow images obtained after implementing this procedure.

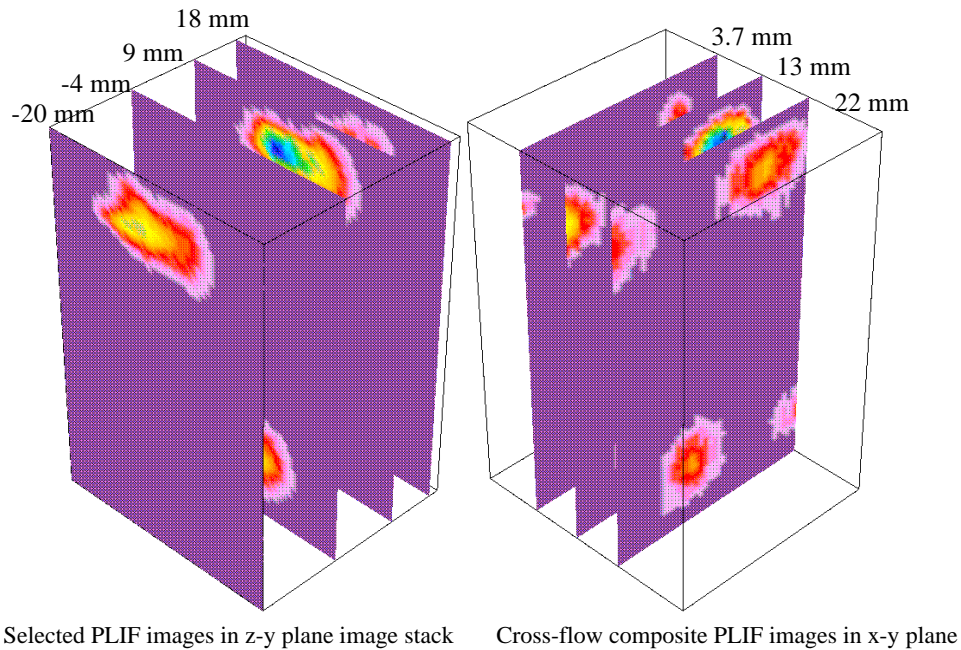


Figure 2. Example of image stacking of sequential z-y plane fuel PLIF images taken in 1mm increments across the combustion flowfield to obtain cross-flow (x-y plane) views. Injector is a Lean Direct Injector (LDI) design installed in a radially-staged sector rig. Test conditions are: $\lambda_{exc} = 281.5 \text{ nm}$, $T_{inlet} = 980 \text{ F}$, $P_{inlet} = 212 \text{ psia}$, $\Phi = 0.42$. Flow is from left to right.

All images in each image stack are scaled together so that the highest signal level represents the 99th percentile. Images are displayed in this fashion in order to highlight the lower level structure that would

otherwise be lost in the "glare" of other higher intensity features. For all images the flow is out of the page. To eliminate interference attributable to OH fluorescence contributions, all PLIF measurements were accomplished using a non-resonant wavelength, typically 281.5 nm.

RESULTS AND DISCUSSION

IMAGING MEASUREMENTS

Figure 3 shows a comparison of fuel PLIF cross-flow views for the three different fuel injector concepts examined in this study. The left-most two images were acquired using the flametube. The right-hand image was obtained using the LDI injector concept within the radially staged sector combustor. Immediately apparent from the figure is that the left image shows a highly non-uniform fuel distribution, whereas the middle and the right images display a high degree of symmetry. The images, acquired at the same axial location, approximately 10 mm from their respective injector exit planes, were generated by the previously described computational technique and demonstrate its applicability to diverse experimental conditions and test rig configurations. The crossed white lines in the two left most images denote that particular test rig's center line. These images are not normalized to scale and are acquired at varying test conditions, but they provide a ready method to display the vast differences between individual fuel injector operating characteristics and performance at design conditions.

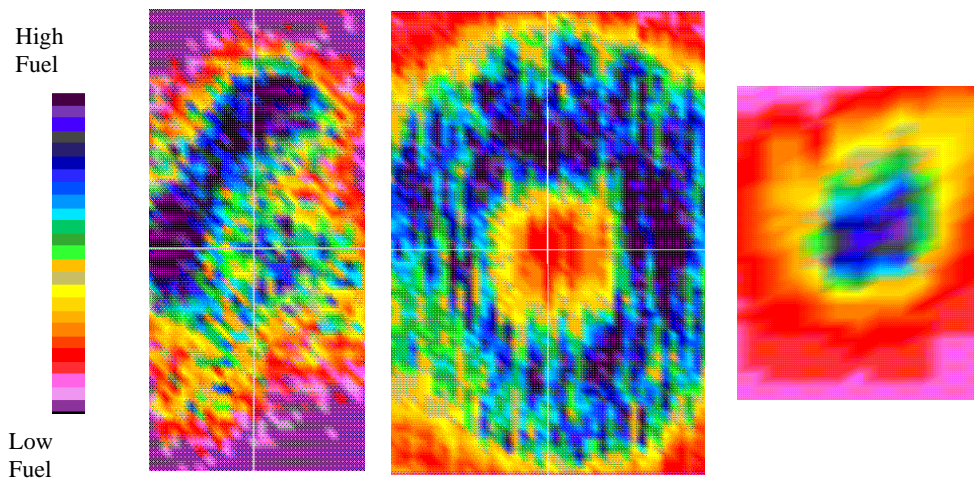


Figure 3. Fuel patternation via planar laser-induced fluorescence approximately 10mm downstream from three lean-burn injector concepts for low emission combustors. Flow is out of the page.

A sequence of cross-flow, or end-on, fuel PLIF images is shown in figure 4. The images were obtained for a lean, dual-circuit (pilot and main) fuel injector concept with only the pilot operating, burning JP-8 jet fuel. The injector was installed in the flametube test rig with test conditions of 700°F (644 K) inlet air, 81 psia (558 kPa) combustor inlet pressure and overall equivalence ratio of 0.445. The five images show the progression downstream from the injector exit plane by the indicated distance increments. These images readily show fuel (dark ring) emerging from the injector (located at $z = 0$, not shown) in a symmetrical pattern. Immediately evident from the images is the absence of fluorescence signal at the middle of the injector, denoted by the cross-hairs. Midway from the center in each image, a thick dark mass of fuel is seen to expand as the apparent viewing position moves further downstream (from left to right).

A fortuitous consequence of imaging in this manner is the ability to utilize a simple trigonometric expression and a finely divided ruler to determine the full spray angle for each condition, thus,

$$\alpha = 2 \tan^{-1} (\Delta h / \Delta z)$$

where $\Delta h = \frac{1}{2} (D_{i+1} - D_i)$ is the fuel ring diameter increase as measured from a predetermined position between successive images and Δz is the corresponding axial displacement between these same two images. The actual spray angles calculated in this manner agreed well with those determined theoretically. This agreement generally held true throughout these experiments.

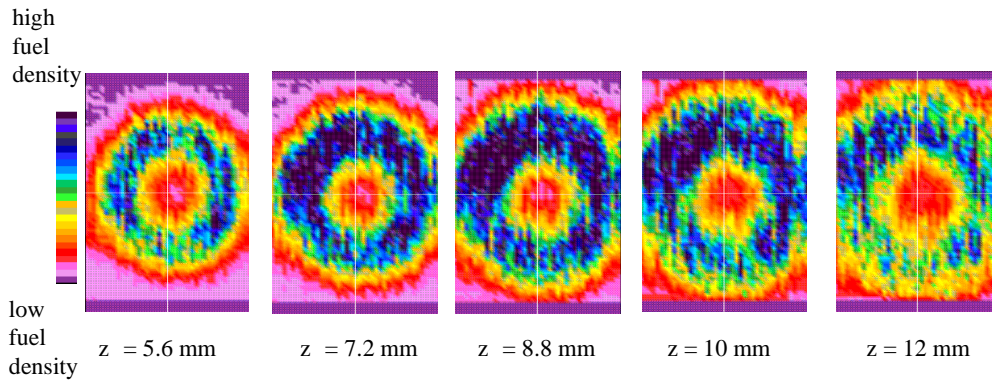


Figure 4. Sequential cross-flow composite fuel PLIF images obtained in a combustor flow displaying resultant patterning for pilot only injection of JP-8 jet fuel. The z dimension gives the distance from the fuel injector exit plane. The crossed lines demarcate the defined injector center point. Test conditions are $\lambda = 281.5 \text{ nm}$, $T_3 = 700 \text{ F}$, $P_{\text{inlet}} = 81 \text{ psia}$, $\Phi = 0.445$.

Another feature found in this and subsequent images is the slight thickening of the observed fuel ring on the side of the camera acquiring the images, in this case the left hand side. This feature may be attributed to extinction effects, which include incident laser sheet scatter and absorption by fuel droplets, or fluorescence trapping. Additionally, the apparent decrease in fluorescence intensity in the last image, $z = 12 \text{ mm}$, has two possible causes. The first is the fall off in incident laser sheet energy, solvable by normalizing the images for laser sheet energy distribution. The second cause could be the combustion process consuming the available fuel resulting in a markedly decreased fluorescence level.

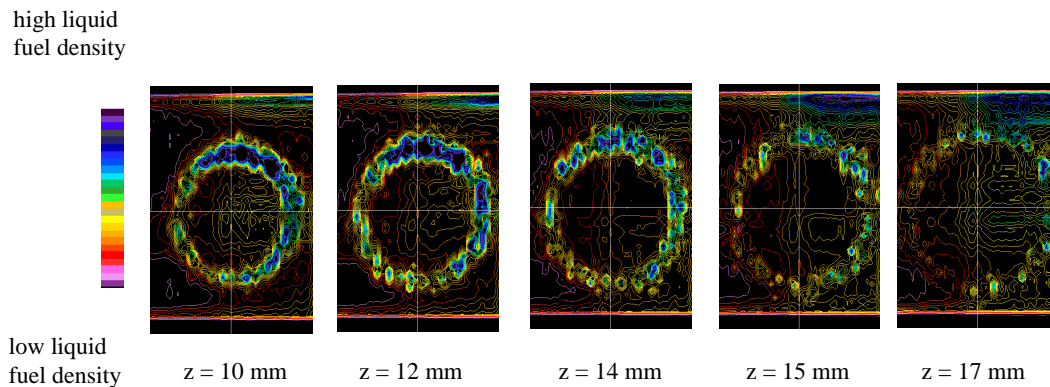


Figure 5. Sequential cross-flow composite Mie scattering images obtained in a combustor flow displaying resultant liquid fuel patterning for two-circuit fuel injection. The z dimension gives the distance from the fuel injector exit. The white lines denote the flametube defined center point. Note the absence of scattering from the outer fuel circuit. Test conditions are: $\lambda = 281.5 \text{ nm}$, $T_{\text{inlet}} = 768 \text{ F}$, $P_{\text{inlet}} = 232 \text{ psia}$, $\Phi = 0.304$.

Figure 5 presents a sequence of cross-flow Mie scattering images obtained for the same injector, but with both pilot and main operating. Test conditions were: 768° F (682 K) inlet air, 232 psia (1.6 MPa) combustor inlet pressure and overall equivalence ratio of 0.304 . As in the previous figure, the five images progress from left to right, downstream from the injector exit plane by the indicated distance increments. These images, shown in a contour format, distinctly show fuel emerging from the injector (located at $z = 0$, not shown) in a nearly symmetrical ring formation. Expansion of the fuel ring is again observed in the sequential images from which an accurate fuel spray angle calculation can be made. Noticeably absent from the images in this figure is the Mie scattering from the main. Only the scatter from the pilot is observed. This observation can be explained by reasoning that in this design and at these conditions, the main has greater atomization efficiency than the pilot.

Also in figure 5, the planar Mie scattering intensity is observed to drop off beginning in the $z = 15$ image. This can be attributed to two possible effects. The first, as in the fuel PLIF case, is a fall-off in incident laser sheet energy, which could be resolved by normalizing the images for laser sheet energy distribution. The second potential cause is a scarcity of fuel drops in this downstream region due to vaporization.

Figure 6 shows a comparison of simultaneous Fuel PLIF and planar Mie scattering results for the two-circuit fuel injector with both pilot and main operating, burning JP-8 jet fuel. The images, acquired at the same axial location at flow conditions of: $T_{inlet} = 768^{\circ}\text{F}$ (682 K), $P_{inlet} = 232$ psia (1.6 MPa), $\phi = 0.304$, demonstrate the significance of comparing these two techniques. Both images display uniform fuel patterning, however, the PLIF image shows two distinct fuel sprays (pilot and main), appearing here as dark rings separated by lighter regions of little or no fuel fluorescence. Conversely, the Mie image exhibits scattering only from the pilot . Since PLIF imaging captures fluorescence from both the liquid and vapor phases of fuel and planar Mie imaging collects scattering only from the liquid, a comparison of the two techniques would be a valuable tool to investigate the fuel vaporization process.

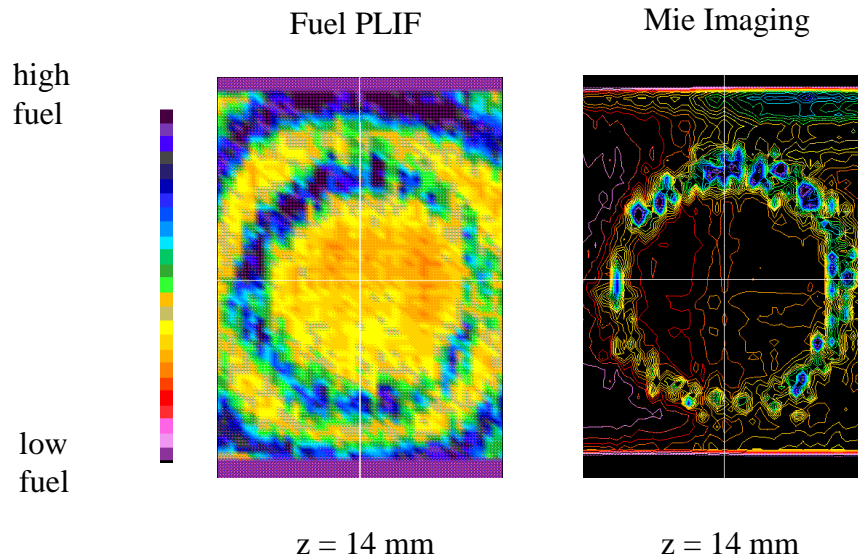


Figure 6. Comparison of simultaneous composite planar Mie and Fuel PLIF images acquired at the same axial location for a two circuit (pilot and main) fuel injector burning JP-8 jet fuel. The lack of scattering from the outer circuit (main) in the Mie image demonstrates that at this position, the effluent is vapor whereas that of the inner injector (pilot) is still a liquid. Test conditions are: $\lambda = 281.5$ nm, $T_{inlet} = 768$ F, $P_{inlet} = 232$ psia, $\Phi = 0.304$.

PDPA MEASUREMENTS

Simultaneous PDPA measurements were performed coincident with fuel PLIF and Mie measurements for the two-circuit lean injector concept with only the pilot operating. Due to time constraints at each condition, PDPA measurements were attempted across a full diameter of the flow field, or when a full diameter was impossible, a minimum of a half diameter was attempted. Fuel PLIF images from this injector showed a high degree of spray symmetry, so it was reasonable to assume that a single diameter was representative of the whole spray. Despite the use of a focused frequency-doubled Nd:YAG light sheet to maintain optical access during the tests, only a few points were measured at the lowest inlet air temperature condition due to the accumulation of fuel deposits on the combustor windows. However, measurements were more successful at mid-range inlet temperatures.

Figure 7 shows the imaged results for this injector fitted into the flametube test rig, acquired simultaneously at approximately 0.5 in (1.27 cm) downstream of the injector exit plane, by fuel PLIF and Mie scattering. The white lines at -15° and -105° show the paths along which PDPA mass flux data was obtained. Figure 7 also presents a drop graph that plots the normalized signals from each of the three techniques. The PDPA data along the -15° line is indicated by solid symbols whereas the corresponding data along the -105° line is shown by the open symbols. It is immediately clear that there is close agreement between the results for the 3 different mass flux measurements along the -105° line. Along the longer -15° line a close agreement is seen on the positive x-axis; however, along the negative x-axis the PDPA data virtually falls off to zero between $x = -5$ mm and $x = -20$ mm. This falloff is believed to be attributable to an obscuration of the PDPA receiver.¹⁵

In general, there is excellent agreement between the fuel PLIF, Mie scattering and PDPA data for this injector. There appears to be a slight shift of approximately 1 mm along the positive x-axis in the imaged data with respect to the PDPA data. However, this offset is insignificant when considering that each measurement system was installed individually and was independently calibrated. Future work will incorporate a single device which will allow repeatable and coincident calibration of each diagnostic technique, thereby achieving the same zero position.

SUMMARY AND CONCLUSIONS

This study has presented images depicting the fuel patterning of lean burning injector concepts operating at conditions of high pressure and temperature. These images, obtained by simultaneous application of PLIF and planar Mie scattering diagnostic techniques, demonstrate the versatility of the image stacking technique to achieve cross-flow views. Using this technique we are able to view upstream and analyze individual fuel injector performance. Fuel PLIF was found capable of imaging both liquid and vapor fuel patterning but proved incapable of distinguishing between the two. The planar Mie scattering images denoted only that region in the flowfield where liquid was present. The simultaneous application of these techniques provide complimentary methods to plot liquid fuel patterning. This study indicates that further application of simultaneous fuel PLIF and planar Mie scattering could prove valuable in the study of the fuel vaporization processes at actual combustor conditions.

Comparison of the imaged results with those acquired from PDPA measurements showed a close agreement between the three independent measurement techniques. This observation can be used in future work to develop a procedure to correlate the data obtained from one technique with that from another. In this manner, qualitative image data can be "quantified" by using the quantitative PDPA mass flux data as a calibration standard.

Studies are underway to institute image corrections for incident laser sheet inhomogeneities similar to those recently reported for gaseous-fueled, atmospheric pressure flames.¹⁶ However, obstacles not encountered by bench top atmospheric pressure flames must first be surmounted. These impediments include inaccessibility during testing, and the fact that incident laser sheet insertion and all diagnostics must

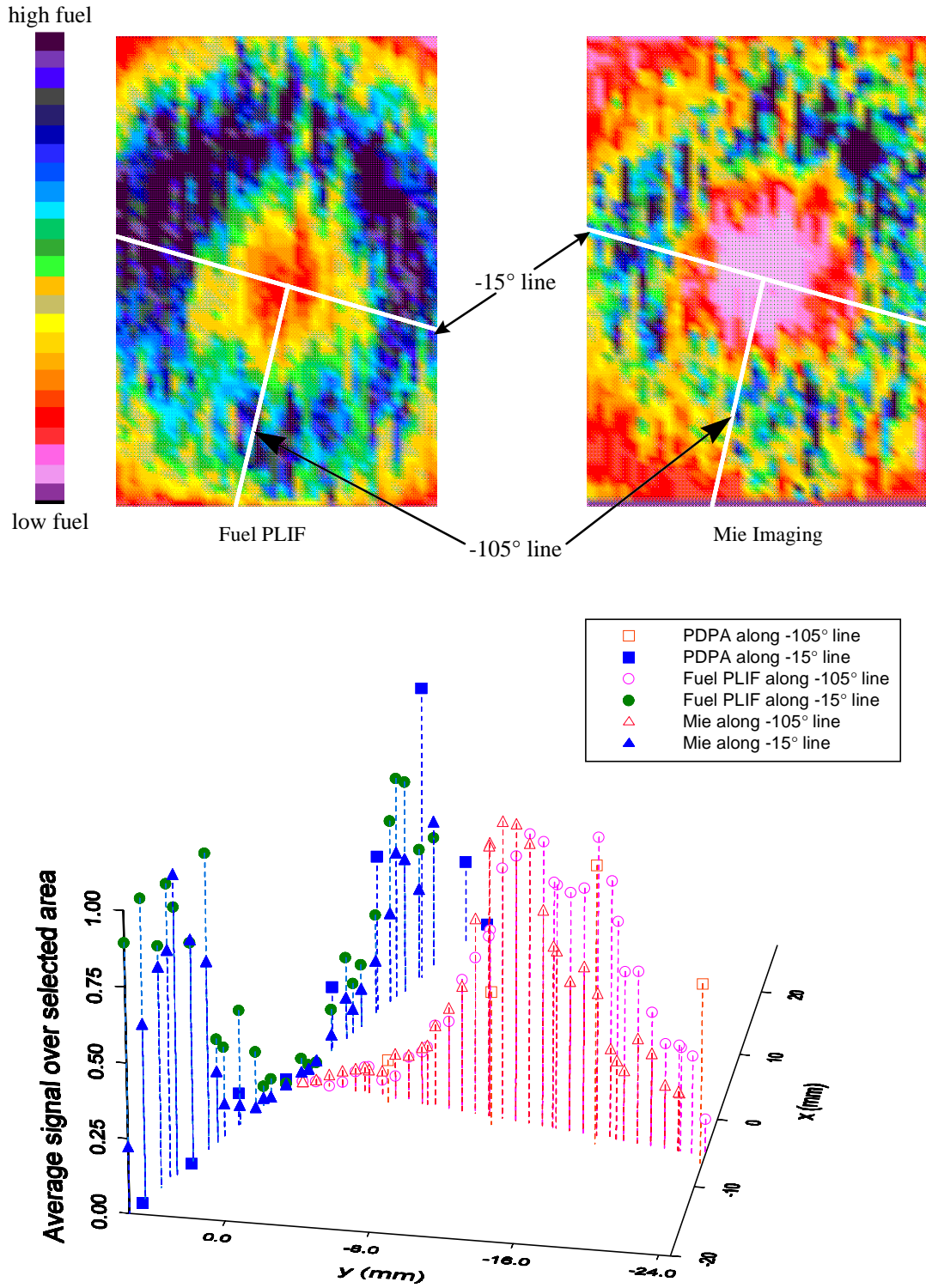


Figure 7. Plotted comparison of fuel volume distribution as measured by PLIF, planar Mie scattering, and PDPA. All data was acquired at the same axial location of 0.5 in (1.27 cm) from the fuel injector exit plane. White lines overlaying the imaged data denote the path along which PDPA measurements were made. Flow conditions were: $T_{inlet} = 650$ F (616 K), $P_{inlet} = 81$ psia (558 kPa), $\Phi = 0.445$.

occur through windows of questionable transparency due to the potential accumulation of flow field depositions with some injector designs at certain inlet conditions.

For the imaging work, no attempts were made to address extinction effects attributable to laser sheet scatter or non-resonant absorption by the droplets. Although this is only an issue at the lower inlet temperature conditions where there exists a significant concentration of fuel droplets and the effects appeared minimal in this study, extinction effects pose a significant challenge to applications of this diagnostic technique for this and future higher pressure venues and must be investigated more thoroughly.

ACKNOWLEDGMENTS

The Authors wish to thank the following for their contributions to the work presented herein: Wade Arida, Robert McCluskey, Ray Williams, Hamilton Fernandez, Joe Morgan, Dean Kocan, and Dick Spangle.

REFERENCES

1. For Review see, *Instrumentation for Flows and Combustion*, A. M. K. P. Taylor, ed., Academic Press, San Diego, California, 1993.
2. For Review see, Rothe, E. and Andresen, P., "Application of Tunable Excimer Lasers to Combustion Diagnostics: A Review," *Applied Optics*, Vol. 36, No. 18, pp. 3971-4033, 1997.
3. For review see, Hanson, R.K., "Combustion Diagnostics: Planar Imaging techniques," *Twenty-First Symposium (International) on Combustion*, The Combustion Institute, pp. 1677 - 1691, 1986.
4. Williams, B. and Fleming, J., "Comparative Species Concentrations in CH₄/O₂/AR Flames Doped with N₂O, NO, and NO₂," *Combustion and Flame*, Vol. 98, pp. 93-106, 1994.
5. Battles, B. and Hanson, R., "Laser-Induced Fluorescence Measurements of NO and OH Mole Fraction in Fuel-Lean, High-Pressure (1-10 atm) Methane Flames: Fluorescence Modeling and Experimental Validation," *J. Quant. Spectrosc. Radiat. Transfer*, Vol. 54, No. 3, pp. 521-537, 1995.
6. Klassen, M., Thomsen, D., Reisel, J., and Laurendeau, N., Laser-Induced Fluorescence Measurements of Nitric Oxide Formation in High-Pressure Premixed Methane Flames," *Combust. Sci. and Tech.*, Vols. 110-111, pp. 229-247, 1995.
7. Allen, M., McManus, K., and Sonnenfroh, D., "PLIF Imaging Spray Flame Combustors at Elevated Pressure," *AIAA Paper No. 95-0172*, 33rd Aerospace Sciences Meeting and Exhibit, January 1995.
8. Andresen, P. Meijer, G., Schluter, H., Voges, H., Koch, A., Hentschel, W., Oppermann, W., and Rothe, E., "Fluorescence Imaging Inside an Internal Combustion Engine using Tunable Excimer Lasers," *Applied Optics*, Vol. 29, No. 16, p. 2392, 1990.
9. Davidson, D., Roehrig, M., Peterson, E., Di Rosa, M., and Hanson, R., "Measurements of the OH A-X (0,0) 306 nm Absorption Bandhead at 60 atm and 1735 K," *J. Quant. Spectrosc. Radiat. Transfer*, Vol. 55, No. 6, pp. 755-762, 1996.
10. Melton, L. and Verdick, J., "Vapor/Liquid Visualization in Fuel Sprays," *Twentieth Symposium (International) on Combustion*, The Combustion Institute, pp 1283-1290, 1984.
11. McDonnell, V., Lee, S., and Samuelson, S., "Interpretation of Spray Behavior in Complex Aerodynamic Flows Using Phase Doppler interferometry and Planar Liquid Laser Induced Fluorescence," in *Optical Techniques in Fluid, Thermal, and Combustion Flow*, S. S. Cha and J. D. Trollingier, editors, Proc. SPIE 2546, pp. 530-539, 1995.

12. Locke, R., Hicks, Y., Anderson, R., Ockunzzi, K., and Schock, H., "Imaging of Combustion Species in a Radially-Staged Gas Turbine Combustor," *Proceedings of the 33rd JANNAF Combustion Subcommittee Meeting*, CPIA Publication 653, Vol. 1, pp. 11-23, November 1996.
13. Locke, R., Hicks, Y., Anderson, R., and Ockunzzi, K., "OH Imaging in a Lean Burning High-Pressure Combustor," *AIAA Journal*, Vol. 34, No. 3, pp. 622-624, 1996.
14. Locke, R., Hicks, Y., Anderson, R., Zaller, M., and Schock, H., "Imaging Fluorescent Combustion Species in Gas Turbine Flame Tubes: On Complexities in Real Systems," AIAA Paper No. 97-2837, 33rd AIAA/ASME/SAE/ASEE Joint Propulsion Conference, July, 1997.
15. Zaller, M. and Klein, M.D., "Shear Coaxial Injector Cryogenic Spray Characterization," *Advanced Earth-to-Orbit Propulsion Technology - 1994*, Vol. 2, R.J. Richmond and S.T. Wu, eds., NASA CP-3282, pp. 194-200, September, 1994.
16. Georgiev, N. and Alden, M., "Two-Dimensional Imaging of Flame Species Using Two-Photon Laser-Induced Fluorescence," *Applied Spectroscopy*, Vol. 51, No. 8, pp. 1229-1237, 1997.

REPORT DOCUMENTATION PAGE			<i>Form Approved</i> <i>OMB No. 0704-0188</i>	
Public reporting burden for this collection of information is estimated to average 1 hour per response, including the time for reviewing instructions, searching existing data sources, gathering and maintaining the data needed, and completing and reviewing the collection of information. Send comments regarding this burden estimate or any other aspect of this collection of information, including suggestions for reducing this burden, to Washington Headquarters Services, Directorate for Information Operations and Reports, 1215 Jefferson Davis Highway, Suite 1204, Arlington, VA 22202-4302, and to the Office of Management and Budget, Paperwork Reduction Project (0704-0188), Washington, DC 20503.				
1. AGENCY USE ONLY (Leave blank)		2. REPORT DATE February 1998	3. REPORT TYPE AND DATES COVERED Technical Memorandum	
4. TITLE AND SUBTITLE Fuel Injector Patterning Evaluation in Advanced Liquid-Fueled, High Pressure, Gas Turbine Combustors, Using Nonintrusive Optical Diagnostic Techniques			5. FUNDING NUMBERS WU-538-06-12-00	
6. AUTHOR(S) R.J. Locke, Y.R. Hicks, R.C. Anderson, and M.M. Zaller				
7. PERFORMING ORGANIZATION NAME(S) AND ADDRESS(ES) National Aeronautics and Space Administration Lewis Research Center Cleveland, Ohio 44135-3191			8. PERFORMING ORGANIZATION REPORT NUMBER E-10977	
9. SPONSORING/MONITORING AGENCY NAME(S) AND ADDRESS(ES) National Aeronautics and Space Administration Washington, DC 20546-0001			10. SPONSORING/MONITORING AGENCY REPORT NUMBER NASA TM-1998-206292	
11. SUPPLEMENTARY NOTES Prepared for the 1997 34th JANNAF CS/PSHS/APS Joint Meeting, sponsored by the Chemical Propulsion Information Agency, West Palm Beach, Florida, October 27-31, 1997. R.J. Locke, NYMA Inc., 2001 Aerospace Parkway, Brook Park, Ohio 44142 (work funded by NASA Contract NAS3-27186); Y.R. Hicks, R.C. Anderson and M.M. Zaller, NASA Lewis Research Center. Responsible person, Y.R. Hicks, NASA Lewis Research Center, organization code 5520, (216) 433-3410.				
12a. DISTRIBUTION/AVAILABILITY STATEMENT Unclassified - Unlimited Subject Categories: 07 and 35 This publication is available from the NASA Center for AeroSpace Information, (301) 621-0390.			12b. DISTRIBUTION CODE Distribution: Nonstandard	
13. ABSTRACT (Maximum 200 words) Planar laser-induced fluorescence (PLIF) imaging and planar Mie scattering are used to examine the fuel distribution pattern (patterning) for advanced fuel injector concepts in kerosene burning, high pressure gas turbine combustors. Three diverse fuel injector concepts for aerospace applications were investigated under a broad range of operating conditions. Fuel PLIF patterning results are contrasted with those obtained by planar Mie scattering. Further comparison is also made for one injector with data obtained through phase Doppler measurements. Differences in spray patterns for diverse conditions and fuel injector configurations are readily discernible. An examination of the data has shown that a direct determination of the fuel spray angle at realistic conditions is also possible. The results obtained in this study demonstrate the applicability and usefulness of these nonintrusive optical techniques for investigating fuel spray patterning under actual combustor conditions.				
14. SUBJECT TERMS Laser diagnostics; Combustion; High pressure; Patterning; Liquid fuel			15. NUMBER OF PAGES 17	
			16. PRICE CODE A03	
17. SECURITY CLASSIFICATION OF REPORT Unclassified	18. SECURITY CLASSIFICATION OF THIS PAGE Unclassified	19. SECURITY CLASSIFICATION OF ABSTRACT Unclassified	20. LIMITATION OF ABSTRACT	

