

FORMATION DESIGN STRATEGY FOR SCOPE HIGH ELLIPTIC FORMATION FLYING MISSION

YUICHI TSUDA

Japan Aerospace Exploration Agency

3-1-1, Yoshinodai, Sagamihara, Kanagawa, Japan, 229-8510

Email: tsuda@isas.jaxa.jp

Abstract

The new formation design strategy using simulated annealing (SA) optimization is presented. The SA algorithm is useful to survey a whole solution space of optimum formation, taking into account realistic constraints composed of continuous and discrete functions. It is revealed that this method is not only applicable for circular orbit, but also for high-elliptic orbit formation flying. The developed algorithm is first tested with a simple cart-wheel motion example, and then applied to the formation design for SCOPE. SCOPE is the next generation geomagnetotail observation mission planned in JAXA, utilizing a formation flying technology in a high elliptic orbit. A distinctive and useful heuristic is found by investigating SA results, showing the effectiveness of the proposed design process.

1. Introduction

Japan Aerospace Exploration Agency (JAXA) is currently planning the next generation Earth-magnetosphere observation mission called “SCOPE” (cross-Scale Coupling in Plasma universeE, Fig.1)¹. Its predecessor “GEOTAIL”, launched in 1992, played a big role for understanding the ion behavior in the Earth’s magnetotail and triggered interests toward further microscopic scale (electrons scale) phenomena. Following this successful work of GEOTAIL, SCOPE aims at observing the Earth’s magnetotail where the ions and electrons interact with each other, with 5 satellites flying in formation. To fully resolve the time-domain behavior and spatial distribution of the magnetospheric phenomena, a simultaneous observation by spatially distributed electro-magnetic

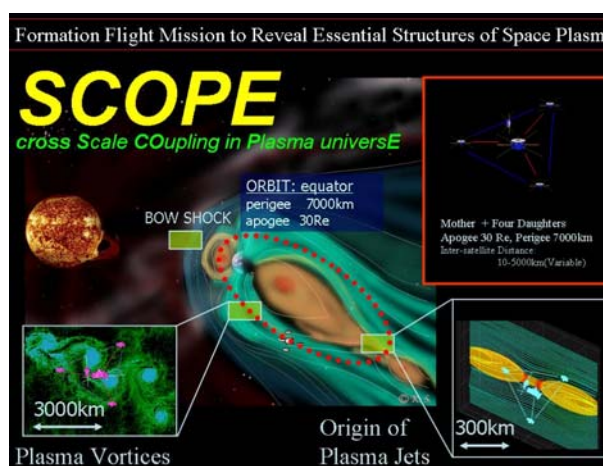


Fig.1: SCOPE Mission Image

instruments is essential.

From the formation design point of view, there are several requirements to be satisfied, which include not only the optimality of observation, but also constraints stemming from the operability, the physical layout of the onboard components and so on.

In the SCOPE mission, the fundamental requirements for formation design come from (1) observation optimality, (2) relative orbit determination accuracy, and (3) inter-satellite communication link capability constrained by antennae layout of each satellite. The (2) requirement is needed because in the SCOPE mission, the inter-satellite radiometric ranging and clock synchronization via inter-satellite communications are employed. (3) is needed to comply with the actual antennae directivity limitations. As the first step of designing the SCOPE formation, one wants to obtain all the possible answers which satisfy (1), (2) and (3) at the same time. Here what is needed is surveying a whole solution space, not

focusing on the highly accurate local minimum, but rather on approximated answers which represent all the possible types of solutions.

This paper proposes a formation design strategy which surveys a whole solution space. This method employs the simulated annealing (SA) algorithm to obtain the globally optimum solution. In this paper, the method is validated through analyzing the well-known optimum formation in low-earth orbit, and then applied to SCOPE formation design. Finally, based on the solution types obtained by SA, a heuristics to design the optimum SCOPE formation is introduced.

2. Formation Optimality Index

Before constructing the design method, this section introduces several indices used in the following formation design.

2.1. Observation Optimality (FDOP-O)

Consider the multi-point simultaneous observations by spatially distributed satellites fleet. The observation objective is to obtain the spatial differential coefficient of the observation field. The observation of i -th satellite, which is located at the relative position vector $\mathbf{r} = (x, y, z)^T$ can be written as;

$$Y = f(\mathbf{r}) \quad (1)$$

Suppose the field to be observed is linear, i.e.;

$$\nabla f(\mathbf{r}) = \left(\frac{\partial f}{\partial x}, \frac{\partial f}{\partial y}, \frac{\partial f}{\partial z} \right)^T \quad (2)$$

then from the observation of i -th and j -th satellites, the difference of observations $Z_{ij} = Y_j - Y_i$ can be expressed as;

$$Z_{ij} = (\mathbf{r}_j - \mathbf{r}_i)^T \nabla f = \mathbf{r}_{ij}^T \nabla f \quad (3)$$

Eq.(3) implies that the quantity ∇f can be calculated from the observation differences. To obtain 3-dimensional ∇f value, at least 3 different Z_{ij} are required, which means at least 4 satellites are needed to obtain ∇f .

Practically ∇f is determined by the least-square

method as follows;

$$\nabla f = \left(\sum \mathbf{r}_{ij} \mathbf{r}_{ij}^T \right)^{-1} \left(\sum \mathbf{r}_{ij} Z_{ij} \right) \quad (4)$$

where \mathbf{r}_{ij} is the relative position vector from i -th to j -th satellite. If the field is supposed to be isotropic, the error covariance for equation (4) can be calculated from the following equation;

$$\mathbf{P} = \left(\sum \mathbf{r}_{ij} \mathbf{r}_{ij}^T \right)^{-1} \sigma^2 \quad (5)$$

where σ^2 is the error variance of the observation.

Therefore the estimation quality can be estimated from the following quantity;

$$\sqrt{\text{Tr} \left[\left(\sum \mathbf{r}_{ij} \mathbf{r}_{ij}^T \right)^{-1} \right]} \quad (6)$$

which represents the dilution of precision for the observation quantity. (6) implies that the well-known tetrahedron formation is optimum, and in addition, the larger formation is better. By eliminating the size effect from (6), we finally obtain the formation dilution of precision for observation as follows;

$$FDOPO = \sqrt{\max(\mathbf{r}_{ij}^2) \text{Tr} \left[\left(\sum \mathbf{r}_{ij} \mathbf{r}_{ij}^T \right)^{-1} \right]} \quad (7)$$

Here the index is normalized by the maximum relative distance among all the two satellites combinations.

2.2. Formation Geometry Determination Optimality (FDOP-G)

Consider the quality of formation geometry determination from the relative ranging information. The state vector to be estimated is the formation shape, which is written as;

$$\mathbf{x}_- = [x_1 \ x_2 \ y_2 \ x_3 \ y_3 \ z_3 \ \cdots \ x_{n-1} \ y_{n-1} \ z_{n-1}]^T \quad (8)$$

where the 0th satellite is supposed to be at the origin, and the 1st satellite is supposed to be located on the x-axis, the 2nd satellite is on the xy-plane. Hence the dimension of estimation state vector becomes $3(n-2)$ for n -satellite system.

From the relation between ranging output and relative position vector $\Delta r_{ij} = \|\mathbf{r}_i - \mathbf{r}_j\|$, the following

observation equation is obtained;

$$\delta\Delta r_{ij} = \frac{\partial\Delta r_{ij}}{\partial\mathbf{r}_i} \delta\mathbf{r}_i + \frac{\partial\Delta r_{ij}}{\partial\mathbf{r}_j} \delta\mathbf{r}_j \quad (9)$$

Eq.(9) for all the satellites combinations are combined to form the following matrix relation;

$$\mathbf{y} = \mathbf{H} \mathbf{x} \quad (10)$$

where

$$\mathbf{y} = \begin{bmatrix} \delta\Delta r_{01} & \delta\Delta r_{02} & \cdots & \delta\Delta r_{0n-1} & \delta\Delta r_{12} \\ \cdots & \delta\Delta r_{1n-1} & \cdots & \delta\Delta r_{n-3n-2} & \delta\Delta r_{n-2n-1} \end{bmatrix}^T \quad (11)$$

is the observation vector. The formation geometry estimation is now translated to minimize

$$J = \frac{1}{2} (\mathbf{y} - \mathbf{H} \mathbf{x})^T (\mathbf{y} - \mathbf{H} \mathbf{x})$$

hence the dilution of precision for geometry determination is derived as follows;

$$FDOPG = \sqrt{\text{Tr} \left[\left(\mathbf{H}^T \mathbf{H} \right)^{-1} \right]} / (n-1) \quad (12)$$

In (12), division by n-1 is introduced to eliminate the satellite number dependency.

2.3. Formation Dynamics Determination Optimality (FDOP-D)

Consider the quality of relative motion (or formation dynamics) determination from the relative ranging history information. The state vector to be estimated is the relative position vector (with reference to the inertial space), which can be written as;

$$\mathbf{x} = [x_1 \ y_1 \ z_1 \ x_2 \ y_2 \ z_2 \ \cdots \ x_{n-1} \ y_{n-1} \ z_{n-1}]^T \quad (13)$$

Different from (8), \mathbf{x} includes the information not only about the shape of the formation, but also the orientation of the formation with reference to the inertial space. Therefore the dimension of estimation state vector becomes 3(n-1) for n-satellite system.

Denoting the transition matrix of \mathbf{x} as $\Phi_r(t_2, t_1)$, the

observation equation is written as $\mathbf{y} = \mathbf{H} \Phi_r \mathbf{x}$. Then the formation dynamics estimation is translated to

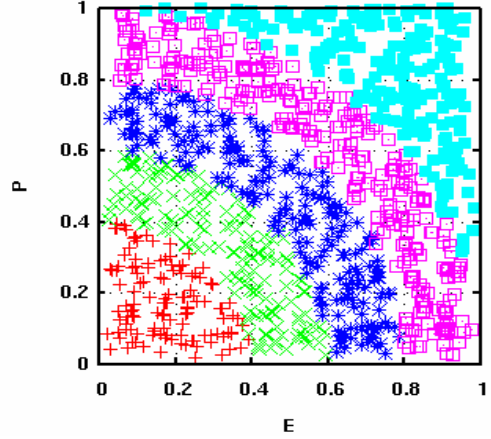


Fig.2: Samples Distribution in E-P Plane

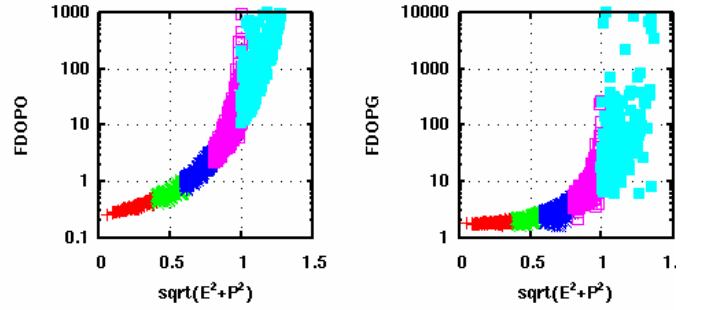


Fig.3: Correlations Between FDOPO, FDOPG and E,P

minimize

$$J = \frac{1}{2} \oint (\mathbf{y}(t) - \mathbf{H}(t) \Phi_r(t, 0) \mathbf{x}(0))^T \cdot (\mathbf{y}(t) - \mathbf{H}(t) \Phi_r(t, 0) \mathbf{x}(0)) dt$$

hence the dilution of precision for dynamics determination is derived as follows;

$$FDOPD = \sqrt{\text{Tr} \left[\left(\frac{1}{T} \oint \Phi_r(t, 0)^T \mathbf{H}(t)^T \mathbf{H}(t) \Phi_r(t, 0) dt \right)^{-1} \right]} / (n-1) \quad (14)$$

where T is the orbital period. Again division by n-1 in (14) is introduced to eliminate the satellite number dependency.

2.4. Basic Characteristics of the Indices

The proposed indices FDOPO, FDOPG are compared to the indices used in ESA's CLUSTER mission². In CLUSTER, a generic evaluation of formation shape is done by abbreviating the formation shape to the pseudo-ellipsoid, and extracting the characteristic values "elongation" E and "planarity" P. These values

are derived in summary as follows.

First, define the tensor \mathbf{R} ;

$$\mathbf{R} = \sum \mathbf{r}_{ij} \mathbf{r}_{ij}^T \quad (15)$$

The principle axes of the pseudo-ellipsoid are given by the eigenvectors $\mathbf{R}^{(n)}$ of \mathbf{R} . If we suppose

$$R^{(1)} \geq R^{(2)} \geq R^{(3)} \quad (16)$$

then, their square roots represent respectively the major, middle and minor semiaxis of the pseudo-ellipsoid;

$$a = \sqrt{R^{(1)}}, b = \sqrt{R^{(2)}}, c = \sqrt{R^{(3)}} \quad (17)$$

The elongation E and planarity P are defined using (17) as follows;

$$\begin{aligned} E &= 1 - (b/a) \\ P &= 1 - (c/b) \end{aligned} \quad (18)$$

E and P take the value between 0 and 1. The sphere corresponds to $(E,P)=(0,0)$. For 4-satellite formation, $(E,P)=(0,0)$ corresponds to the tetrahedron formation. To survey the relation between E,P and FDOPO, FDOPG, 1000 4-satellite formation samples are generated as is shown in Fig.2. Each satellite in each sample is generated randomly.

The correlations between FDOPO, FDOPG and E,P are shown in Fig.3. Seen from these figures, the optimality of FDOPO and FDOPG corresponds to $(E,P)=(0,0)$. It can also be said that the optimality of FDOPO also guarantees the FDOPG optimality.

3. Global Optimization Using Simulated Annealing Algorithm

3.1. Simulated Annealing Optimization

To survey the whole solution space to find the optimum formation shapes, the simulated annealing (SA) optimization is employed. Some characteristics of SA are described below;

- SA updates the solution by perturbing the previous solution randomly.
- At first SA searches around the whole solution space, rather than insatiably pursuing the optimality. As the optimization step goes by, updates which increase the optimality becomes preferred more by analogy of a cooling process of steel “annealing”.

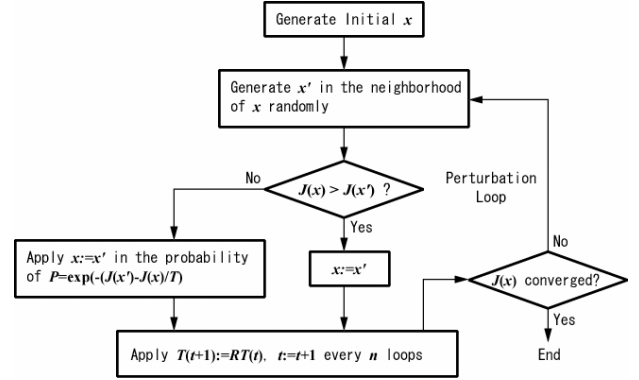


Fig.4: Simulated Annealing Algorithm

- SA is suitable for searching the discrete space, but it is also useful for obtaining the approximated optimum of the multimodal continuous space.
- The results of SA optimization are remained to be refined, by investigating the proximity of the SA solution in detail (by local minimum search).

The overall algorithm of SA is illustrated in Fig.4. In the formation optimization, the SA process becomes as follows;

- (1) The initial solution, which is a set of relative state vectors $\mathbf{x}_i = (x_i, y_i, z_i, v_{xi}, v_{yi}, v_{zi})^T$ at a certain orbital phase (i.e. at apogee), is generated randomly.
- (2) Chose 1 satellite (i -th satellite), and regenerate the state vector \mathbf{x}'_i randomly.
- (3) If the objective function $J(\mathbf{x}')$ is smaller than $J(\mathbf{x})$, apply $\mathbf{x} := \mathbf{x}'$, otherwise stochastically apply $\mathbf{x} := \mathbf{x}'$ according to the process temperature T .
- (4) Terminate the algorithm when $J(\mathbf{x})$ is sufficiently converged, otherwise update T by $T := RT$ and then go to (2).

3.2. Validation: Cart-Wheel Motion

To validate the SA algorithm works properly, a cart-wheel motion in LEO is tested. The fleet of satellites in a circular orbit, having relative motion plane 60 degree inclined from the orbital plane, satisfying a certain relation between relative position and velocity, would hold their relative geometry, while the whole formation is rotating one cycle per orbital period. It is called a “cart-wheel motion”, and it can be solved via Hill’s equations easily.

If we chose the objective function so as just to keep

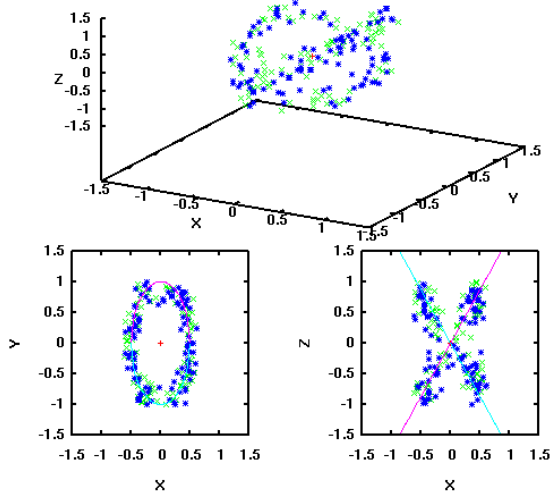


Fig.5: Cart-Wheel Motion Generated by SA

the geometry of the formation, and as a result of that, if a cart-wheel motion is obtained by SA, it can be said that the SA works properly for formation optimization.

The objective function is designed so as to keep the relative distances between all the satellites are kept to L for whole through the orbit;

$$J = \frac{1}{n C_2 T} \oint \sum_{i \neq j} (\|\mathbf{r}_{ij}(t)\| - L)^2 dt \quad (19)$$

To calculate the relative orbital motion over one orbital period, the solution of the following relative orbital motion, which can be found in many papers³ and described briefly in appendix, is used;

$$\ddot{\mathbf{r}}_i + \dot{\boldsymbol{\Omega}} \times \mathbf{r}_i + 2\boldsymbol{\Omega} \times \dot{\mathbf{r}}_i + \boldsymbol{\Omega} \times (\boldsymbol{\Omega} \times \mathbf{r}_i) = -\frac{\mu}{R^3} \left(\mathbf{1} - \frac{3\mathbf{R}\mathbf{R}^T}{R^2} \right) \mathbf{r}_i \quad (20)$$

where \mathbf{R} is the radius, $\boldsymbol{\Omega}$ the orbital angular velocity, μ the gravity constant, respectively.

Because the relative motion must be periodic in the practical formation flight, the following additional condition must hold;

$$\frac{\dot{y}(0)}{x(0)} = -\sqrt{\frac{\mu}{a^3}} \frac{(2+e)}{(1+e)^{1/2}(1-e)^{3/2}} \quad \text{or} \quad (21)$$

$$\frac{\dot{y}(\pi)}{x(\pi)} = -\sqrt{\frac{\mu}{a^3}} \frac{(2-e)}{(1+e)^{3/2}(1-e)^{1/2}}$$

where the dependent variable for x, y is the true anomaly θ . The result of SA optimization is shown

in Fig.5, where the conditions are chosen as follows;

- 3 satellites in 200km circular LEO, $L=1.0$
- search space: $(x,y,z)=[-1:1]$, $(v_x,v_y,v_z)=[-1e3:+1e3]$.
- SA setting: $T_0=100$, $R=0.9$
- Number of trials: 100

In Fig.5, x is the radial direction, z the outer-plane direction, and y completes the right-hand system. The solid lines indicate the analytical solution of the cart-wheel motion. As the numerical solution distribution well aligns the analytical one, it can be said that the SA algorithm works properly to generate the optimum formation.

4. High Elliptic Formation Optimizations

4.1. FDOPO-O Minimization Problem

The primary objective of SCOPE mission is to perform multi-point simultaneous observations around apogee, therefore consider the following objective function;

$$J = \int_{150^\circ}^{210^\circ} FDOPO(\theta) d\theta \quad (22)$$

where the reference orbit is chosen to be a high elliptic orbit for SCOPE($(RE+3000\text{km}) \times 30RE$). As is shown in section 2.4, the minimization of FDOPO automatically optimizes FDOPG as well.

The result of SA optimization is shown in Fig.6, where the conditions are chosen as follows;

- 4 satellites in $(RE+3000\text{km}) \times 30RE$, sat0 at origin.
- Search space: $(x,y,z)=[-1:1]$, $(v_x,v_y,v_z)=[-1e-5:1e-5]$. Periodicity condition (21) must hold.
- SA setting: $T_0=100$, $R=0.9$
- Number of trials: 100

The coordinate system for Fig.6 is the same as that of Fig.5. The linear approximated analysis based on Eq.(20) and Eq.(A1) imply that there are 4 geometrically equivalent formations for a given FDOPO and FDOPG history, which are $(x,y,z)=(+,+,+)$, $(+,+,-)$, $(-,-,+)$ and $(-,-,-)$. This sign selectivity has been removed and unified to $(+,+,+)$ to clarify the pure formation shape dependency on FDOPO. Fig.6 indicates that, of course it shapes a tetrahedron formation, but in addition to that, there is a plane symmetry about yz -plane, and viewed from x -axis, 3 satellites (sat1,2,3) forms a cocentric circle. In summary, the FDOPO optimum formation is

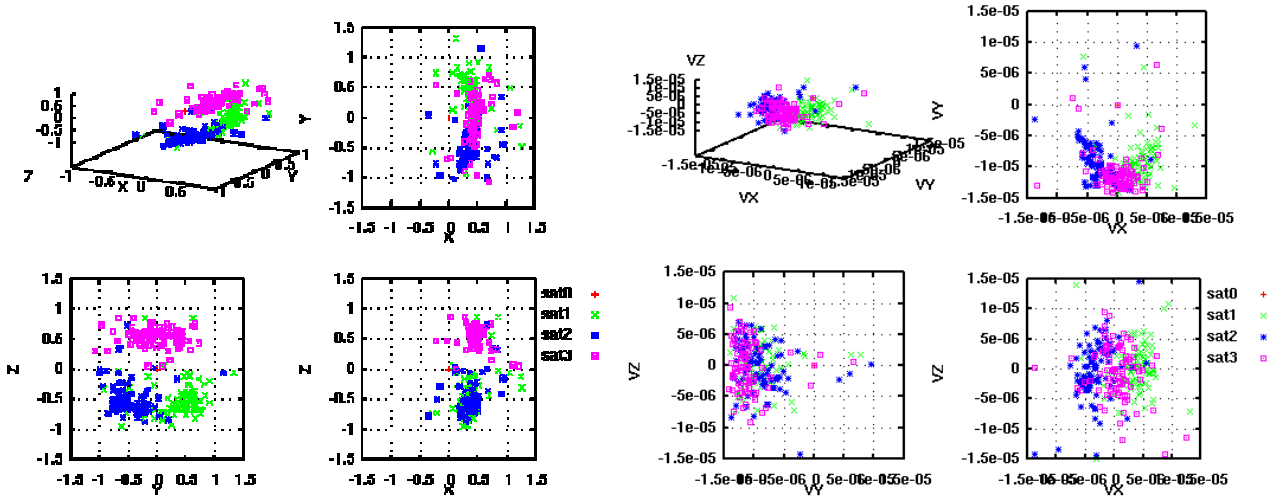


Fig.6: FDOPO Minimum Formation Generated by SA (Left:position, Right:velocity distributions)

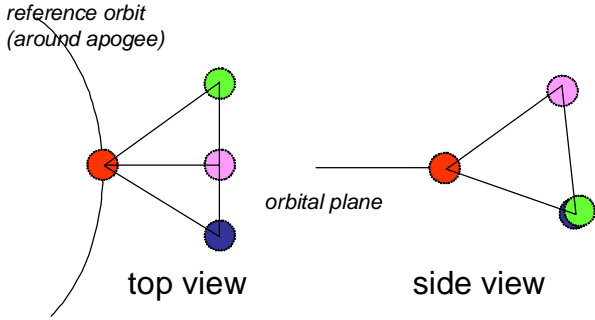


Fig.7: Illustration of FDOPO Minimum Formation

illustrated as Fig.7.

4.2. SCOPE Formation Optimization

In SCOPE mission, FDOPO is not an only thing to be optimized. Because of the communication performance limitation of the member satellite, there are following two constraints in real operation;

- (1) The relative distance between all two satellites must be within 500km to assure the inter-satellite communications.
- (2) Each satellite is equipped with the limited directivity antennae for inter-satellite communication. All the satellites have orbit-normal spin axes, and have the antenna link coverage of $\pm 60^\circ$. Therefore the relative location of each satellite is limited to be within $\pm 60^\circ$ elevation with reference to the orbital plane.

Taking above (1) and (2) into account, the objective function for SCOPE formation optimization is written

as follow;

$$\begin{aligned}
 J = & \int_{150^\circ}^{210^\circ} FDOPO(\theta) d\theta \\
 & + k_1 \sum_{i,j} \oint \left(\text{asin} \frac{\Delta z_{ij}}{\sqrt{\Delta x_{ij}^2 + \Delta y_{ij}^2}} - \Delta \theta \right) d\theta \\
 & + k_2 \frac{\max(\Delta r_{ij}(\theta))}{\min(\Delta r_{ij}(\theta))}
 \end{aligned} \tag{23}$$

where the two constraints are implemented as penalty functions with weighting parameters k_1 and k_2 . The second term restricts the maximum relative elevation between all the satellites combinations, and the third term tries to minimize the variation of the relative distance over one orbital period.

Fig.8 is the result of SA optimization under the following conditions;

- 3 satellites in 200km circular LEO, $L=1.0$
- $k_1=1.0$, $k_2=0.01$, $\Delta\theta=40^\circ$
- search space: $(x,y,z)=[-1:1]$, $(v_x,v_y,v_z)=[-1e3:+1e3]$. Periodicity condition (21) must hold.
- SA setting: $T_0=100$, $R=0.9$
- Number of trials: 100

Fig.8 indicates that the optimum formation for SCOPE is not so much different in shape as that of Fig.6, but the velocity distribution is narrowed. It is understood as the effect of the two constraints, restricting the relative motion of the satellites in a whole orbital period.

5. Heuristics for Optimum SCOPE Formation

Based on the results obtained in section 4, the

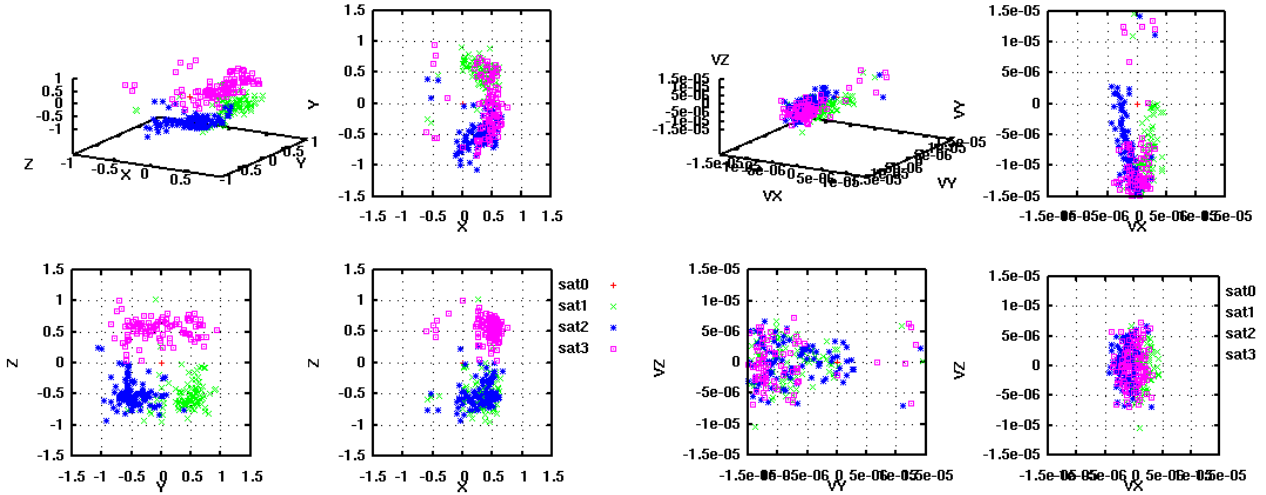


Fig.8: SCOPE Optimum Formation Generated by SA (Left:position, Right:velocity distributions)

heuristics of designing the optimum SCOPE formation can be constructed as follow;

(1) Periodicity condition

All the satellites must have the same orbital period.

(2) Symmetry condition

Sat1 and Sat2 are on the yz-plane symmetric positions at apogee. Sat3 on the yz-plane at apogee.

(3) Cocentric condition

The yz-plane projection of Sat1,Sat2 and Sat3 positions are cocentric at apogee.

If we approximate the condition (3) to the coplanar condition, in which Sat0, Sat1 and Sat3 are on the same orbital plane, the conditions for each satellite at apogee can be listed as follows;

- Sat0: all 0 (on the reference orbit)
- Sat1: $\dot{y}/x = p$, $z = v_z = 0$, $y/x = l \tan(\alpha/2)$
- Sat2: $\dot{y}/x = p$, $z = v_z = 0$, $y/x = -l \tan(\alpha/2)$
- Sat3: $x = \dot{x} = \dot{y} = \dot{z} = 0$, $z/y = l \tan(\beta)$

where

$$p = -\sqrt{\frac{\mu}{a^3}} \frac{(2-e)}{(1+e)^{3/2}(1-e)^{1/2}}$$

and l is the size of the formation, α the inplane angle (\angle Sat2-0-1), β the outer-plane angle (elevation of Sat3 with reference to the orbital plane), a the

semimajor axis. Substituting above conditions to Eq.(A9), we get the following formation state vector for each satellite at apogee;

[Sat1][Sat2]

$$x = l \cos(\alpha/2), y = \pm l \sin(\alpha/2), z = 0$$

$$v_x = \frac{-e\gamma}{-\gamma(1-e) + (1+e)} l \dot{\theta}(\pi) \sin(\alpha/2), \quad (24)$$

$$v_y = \mp \frac{2-e}{1-e} l \dot{\theta}(\pi) \cos(\alpha/2), v_z = 0$$

[Sat3]

$$x = 0, y = l \cos \beta, z = l \sin \beta \quad (25)$$

$$v_x = 0, v_y = 0, v_z = 0$$

Originally there are $6(n-1)=18$ degree-of-freedom design parameters for 4-satellite formation, but now from (24) and (25), the number of design parameters is reduced to only 4, that are α, β, γ and l .

Because we know, from section 2, that the tetrahedron is the optimum shape, the unit size formation can be assumed as $\alpha=60\text{deg}$, $\beta=53.5\text{deg}$, $l=1.0$. Therefore only remaining parameter now is γ .

The simulation examples are shown in Fig.9 and Fig.10 with different γ . FDOPD is 5.0 for Fig.9 and 8.0 for Fig.10, respectively. Seen from these figure, the outer-plane relative elevations are kept always below 60deg, and the FDOPO and FDOPG become small enough around apogee. It is also important to note that, γ approximately corresponds to the perigee/apogee relative distance ratio. This

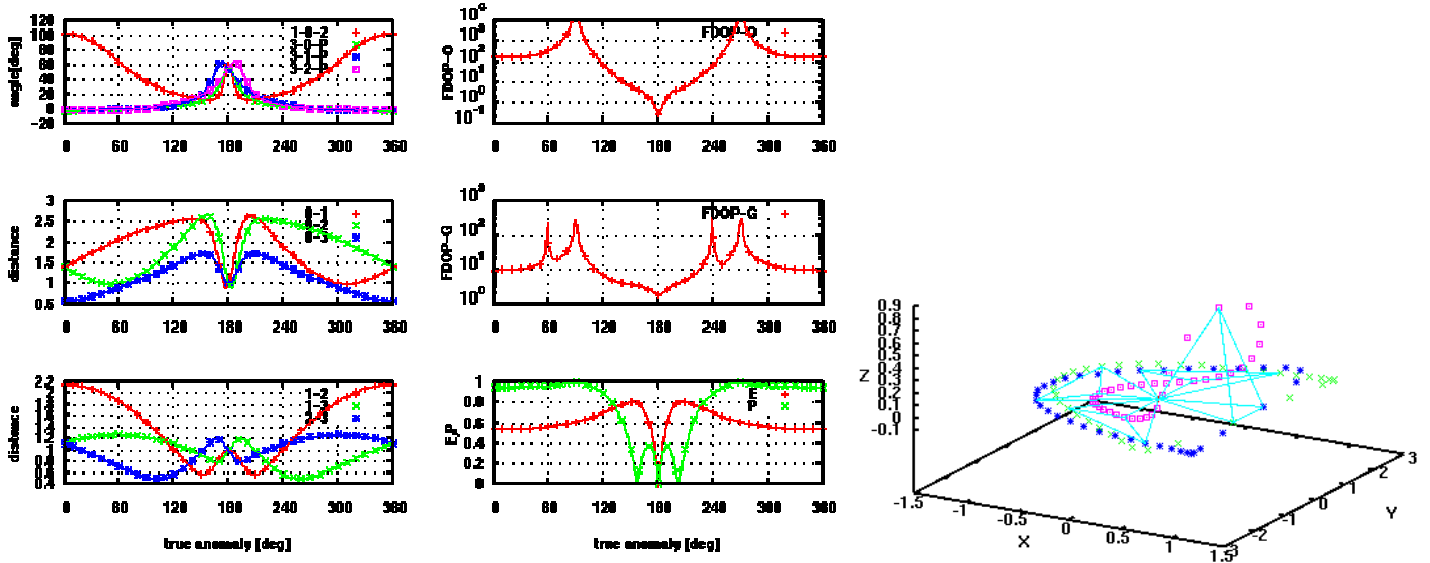


Fig.9: Heuristic Design of SCOPE Formation ($\gamma = 2.0$)

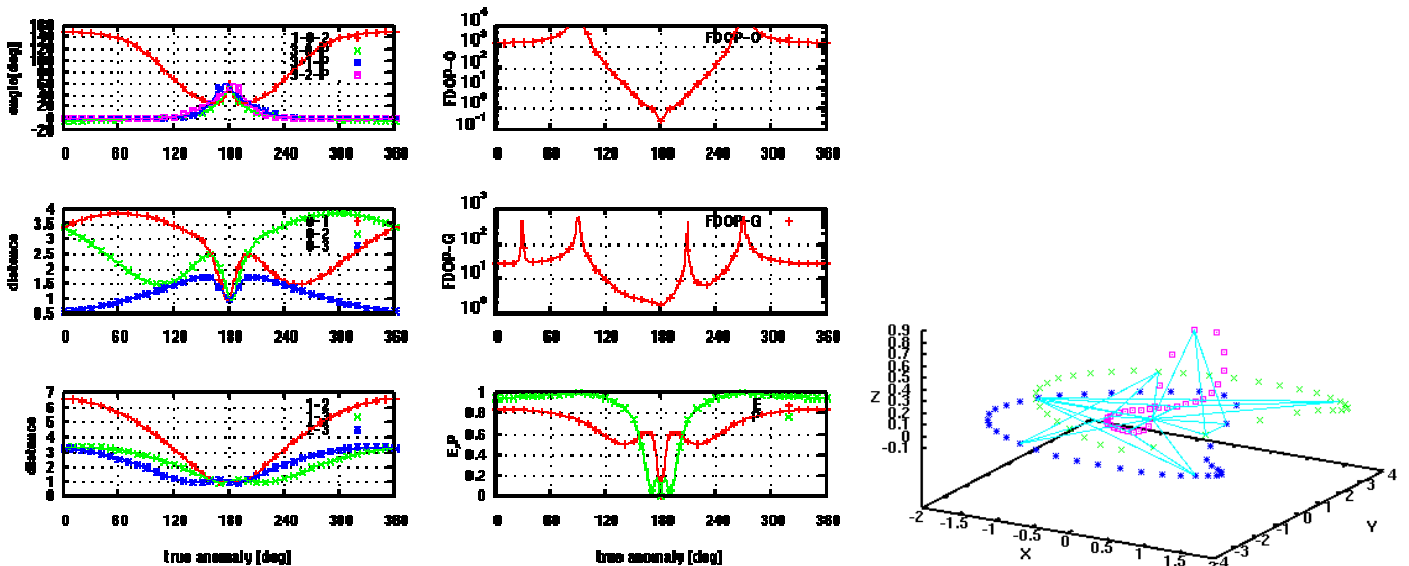


Fig.10 Heuristic Design of SCOPE Formation ($\gamma = 5.0$)

perigee/apogee relative distance ratio can be approached to 1.0 at the cost of increasing FDOPO, FDOPG and FDOPD.

6. Conclusions

The new formation design strategy using simulated annealing (SA) optimization was discussed. It was shown that SA is useful to survey a whole solution space of optimum formation, taking into account realistic constraints. It was also revealed that this method was not only applicable for circular orbit, but also for high-elliptic orbit formation flying.

The developed algorithm was applied to SCOPE formation design. A distinctive and useful heuristics

was found by investigating SA results, showing the effectiveness of the proposed design process.

Reference

1. Fujimoto, M., Saito, Y., Tsuda, Y., Shinohara, I., Kojima, H., "The scientific targets of the SCOPE mission", COSPAR04-A-01348, D2.3/E3.3/PSW2-0016-04, COSPAR 2004
2. Paschmann, G., Daly, P. W., Analysis Methods for Multi-Spacecraft Data., SR-001, ISSI Scientific Reports, 1998
3. How, J. P., Inalhan, G., "Relative Dynamics & Control of Spacecraft Formations in Eccentric Orbits", AIAA Paper, AIAA-2000-4443, 2000

Appendix

The analytical solution for Eq.(20) is derived as follows³;

$$\begin{aligned}
x(\theta) &= [e \sin \theta] d_1 + \left[2e^2 \sin \theta H(\theta) - \frac{e \cos \theta}{(1+e \cos \theta)^2} \right] d_2 + [-\cos \theta] d_3 \\
y(\theta) &= [1+e \cos \theta] d_1 + [2e(1+e \cos \theta)H(\theta)] d_2 \\
&\quad + \left[\left(\frac{1}{1+e \cos \theta} + 1 \right) \sin \theta \right] d_3 + \left[\frac{1}{1+e \cos \theta} \right] d_4 \\
z(\theta) &= \left[\frac{\sin \theta}{1+e \cos \theta} \right] d_5 + \left[\frac{\cos \theta}{1+e \cos \theta} \right] d_6 \\
x'(\theta) &= [e \cos \theta] d_1 + \left[2e^2 \cos \theta H(\theta) + 2e^2 \sin \theta H'(\theta) + \frac{e \sin \theta}{(1+e \cos \theta)^2} - \frac{2e^2 \sin \theta \cos \theta}{(1+e \cos \theta)^3} \right] d_2 \\
&\quad + [\sin \theta] d_3 \\
y'(\theta) &= [-e \sin \theta] d_1 + [2eH'(\theta) - 2e^2 \sin \theta H(\theta) + 2e^2 \cos \theta H'(\theta)] d_2 \\
&\quad + \left[\frac{\cos \theta}{1+e \cos \theta} + \cos \theta + \frac{e \sin^2 \theta}{(1+e \cos \theta)^2} \right] d_3 + \left[\frac{e \sin \theta}{(1+e \cos \theta)^2} \right] d_4 \\
z'(\theta) &= \left[\frac{\cos \theta}{1+e \cos \theta} + \frac{e \sin^2 \theta}{(1+e \cos \theta)^2} \right] d_5 + \left[-\frac{\sin \theta}{1+e \cos \theta} + \frac{e \sin \theta \cos \theta}{(1+e \cos \theta)^2} \right] d_6
\end{aligned} \tag{A1}$$

where

$$H(\theta) = -(1+e^2)^{-5/2} \left[\frac{3eE}{2} - (1+e^2) \sin E + \frac{e}{2} \sin E \cos E \right] \tag{A2}$$

(\cdot)' is θ -differentiation of (\cdot), e the eccentricity and E the eccentric anomaly. θ -differentiation and t -differentiation is related by the following equation;

$$\dot{\theta} = \sqrt{\frac{\mu}{a^3}} \frac{(1+e \cos \theta)^2}{(1-e^2)^{3/2}} \tag{A3}$$

(A1) indicates that the inplane motion and outer-plane motion are independent of each other, and the relative distance history is equivalent for the sign combinations of $(x,y,z)=(+,+,+)$, $(+,+,-)$, $(-,-,+)$, $(-,-,-)$.

The periodicity condition (21) is equivalent to $d_2=0$. When this periodicity holds, the state vector at perigee can be expressed using d_1, \dots, d_6 as follows;

$$\begin{aligned}
x(\theta) &= -d_3 \\
y(\theta) &= [1+e] d_1 + \left[\frac{1}{1+e} \right] d_4 \\
z(\theta) &= \left[\frac{1}{1+e} \right] d_6 \\
x'(\theta) &= [e] d_1 \\
y'(\theta) &= \left[\frac{1}{1+e} + 1 \right] d_3 \\
z'(\theta) &= \left[\frac{1}{1+e} \right] d_5
\end{aligned} \tag{A4}$$

In the same way, the state vector at apogee can be expressed as follows;

$$\begin{aligned}
x(\theta) &= d_3 \\
y(\theta) &= [1-e] d_1 + \left[\frac{1}{1-e} \right] d_4 \\
z(\theta) &= -\left[\frac{1}{1-e} \right] d_6 \\
x'(\theta) &= [-e] d_1 \\
y'(\theta) &= -\left[\frac{1}{1-e} + 1 \right] d_3 \\
z'(\theta) &= -\left[\frac{1}{1-e} \right] d_5
\end{aligned} \tag{A5}$$

If d_1 is selected so that the inplane relative distance is preserved between apogee and perigee, it is derived from (A4) and (A5) that;

$$\begin{aligned}
[1+e] d_1^* + \left[\frac{1}{1+e} \right] d_4 &= [1-e] d_1^* + \left[\frac{1}{1-e} \right] d_4 \\
\Rightarrow d_1^* &= \frac{-1}{1-e^2} d_4
\end{aligned} \tag{A6}$$

Let γ denote the offset ratio of d_1 from d_1^* ;

$$d_1 = \gamma d_1^* \tag{A7}$$

Substituting (A6),(A7) into (A5), we get;

$$\begin{aligned}
x(0) &= -d_3 \\
y(0) &= \left[-\frac{\gamma}{1-e} + \frac{1}{1+e} \right] d_1^* \\
x'(0) &= -e\gamma d_1^* \\
y'(0) &= \left[\frac{1}{1+e} + 1 \right] d_3
\end{aligned} \tag{A8}$$

and

$$\begin{aligned}
x(\pi) &= d_3 \\
y(\pi) &= \left[-\frac{\gamma}{1+e} + \frac{1}{1-e} \right] d_1^* \\
x'(\pi) &= -e\gamma d_1^* \\
y'(\pi) &= -\left[\frac{1}{1-e} + 1 \right] d_3
\end{aligned} \tag{A9}$$

If $\gamma < 1$, the formation size at apogee becomes larger than the size at perigee, while if $\gamma > 1$, the size at apogee becomes smaller than the size at perigee. When $\gamma = 1$, the inplane distance at apogee is equal to that of perigee.