

NASA/TM—2014-218116



NO_x Emissions Performance and Correlation Equations for a Multipoint LDI Injector

*Zhuohui J. He, Clarence T. Chang, and Caitlin E. Follen
Glenn Research Center, Cleveland, Ohio*

NASA STI Program . . . in Profile

Since its founding, NASA has been dedicated to the advancement of aeronautics and space science. The NASA Scientific and Technical Information (STI) program plays a key part in helping NASA maintain this important role.

The NASA STI Program operates under the auspices of the Agency Chief Information Officer. It collects, organizes, provides for archiving, and disseminates NASA's STI. The NASA STI program provides access to the NASA Aeronautics and Space Database and its public interface, the NASA Technical Reports Server, thus providing one of the largest collections of aeronautical and space science STI in the world. Results are published in both non-NASA channels and by NASA in the NASA STI Report Series, which includes the following report types:

- **TECHNICAL PUBLICATION.** Reports of completed research or a major significant phase of research that present the results of NASA programs and include extensive data or theoretical analysis. Includes compilations of significant scientific and technical data and information deemed to be of continuing reference value. NASA counterpart of peer-reviewed formal professional papers but has less stringent limitations on manuscript length and extent of graphic presentations.
- **TECHNICAL MEMORANDUM.** Scientific and technical findings that are preliminary or of specialized interest, e.g., quick release reports, working papers, and bibliographies that contain minimal annotation. Does not contain extensive analysis.
- **CONTRACTOR REPORT.** Scientific and technical findings by NASA-sponsored contractors and grantees.

- **CONFERENCE PUBLICATION.** Collected papers from scientific and technical conferences, symposia, seminars, or other meetings sponsored or cosponsored by NASA.
- **SPECIAL PUBLICATION.** Scientific, technical, or historical information from NASA programs, projects, and missions, often concerned with subjects having substantial public interest.
- **TECHNICAL TRANSLATION.** English-language translations of foreign scientific and technical material pertinent to NASA's mission.

Specialized services also include creating custom thesauri, building customized databases, organizing and publishing research results.

For more information about the NASA STI program, see the following:

- Access the NASA STI program home page at <http://www.sti.nasa.gov>
- E-mail your question to help@sti.nasa.gov
- Fax your question to the NASA STI Information Desk at 443-757-5803
- Phone the NASA STI Information Desk at 443-757-5802
- Write to:
STI Information Desk
NASA Center for AeroSpace Information
7115 Standard Drive
Hanover, MD 21076-1320

NASA/TM—2014-218116



NO_x Emissions Performance and Correlation Equations for a Multipoint LDI Injector

*Zhuohui J. He, Clarence T. Chang, and Caitlin E. Follen
Glenn Research Center, Cleveland, Ohio*

National Aeronautics and
Space Administration

Glenn Research Center
Cleveland, Ohio 44135

April 2014

Acknowledgments

This research was funded by NASA's Environmental Responsible Aviation Project.

This report is a preprint of a paper intended for presentation at a conference. Because changes may be made before formal publication, this preprint is made available with the understanding that it will not be cited or reproduced without the permission of the author.

Trade names and trademarks are used in this report for identification only. Their usage does not constitute an official endorsement, either expressed or implied, by the National Aeronautics and Space Administration.

Level of Review: This material has been technically reviewed by technical management.

Available from

NASA Center for Aerospace Information
7115 Standard Drive
Hanover, MD 21076-1320

National Technical Information Service
5301 Shawnee Road
Alexandria, VA 22312

Available electronically at <http://www.sti.nasa.gov>

NO_x Emissions Performance and Correlation Equations for a Multipoint LDI Injector

Zhuohui J. He, Clarence T. Chang, and Caitlin E. Follen
National Aeronautics and Space Administration
Glenn Research Center
Cleveland, Ohio 44135

Abstract

Lean Direct Injection (LDI) is a combustor concept that reduces nitrogen oxides (NO_x) emissions. This paper looks at a 3-zone multipoint LDI concept developed by Parker Hannifin Corporation. The concept was tested in a flame-tube test facility at NASA Glenn Research Center. Due to test facility limitations, such as inlet air temperature and pressure, the flame-tube test was not able to cover the full set of engine operation conditions. Three NO_x correlation equations were developed based on assessing NO_x emissions dependencies on inlet air pressure (P₃), inlet air temperature (T₃), and fuel air equivalence ratio (Φ) to estimate the NO_x emissions at the unreachable high engine power conditions. As the results, the NO_x emissions are found to be a strong function of combustion inlet air temperature and fuel air equivalence ratio but a weaker function of inlet air pressure. With these three equations, the NO_x emissions performance of this injector concept is calculated as a 66 percent reduction relative to the ICAO CAEP-6 standard using a 55:1 pressure-ratio engine cycle. Uncertainty in the NO_x emissions estimation increases as the extrapolation range departs from the experimental conditions. Since maximum inlet air pressure tested was less than 50 percent of the full power engine inlet air pressure, a future experiment at higher inlet air pressure conditions is needed to confirm the NO_x emissions dependency on inlet air pressure.

Nomenclature

P ₃	[kPa]	Inlet air pressure
T ₃	[K]	Inlet air temperature
T ₄	[K]	Calculated adiabatic flame temperature
Φ , PHI	[-]	Fuel air equivalence ratio
N ₁	[-]	NO _x emissions dependency on inlet air pressure
N ₂	[-]	NO _x emissions dependency on inlet air temperature
N ₃	[-]	NO _x emissions dependency on fuel air equivalence ratio
K	[-]	Correlation equation constant

Abbreviations:

LDI	Lean Direct Injection
EINO _x	Emission Index of nitrogen oxides
ICAO	International Civil Aviation Organization
CAEP	Committee on Aviation Environmental Protection
LTO	Landing and Take-Off cycle
ERA	Environmental Responsible Aviation

Introduction

Nitrogen oxides (NO_x) emissions are harmful to the environment. They contribute to photochemical smog and greenhouse gas generation as well as the depletion of the protective ozone layer in the stratosphere (Ref. 1). In aircraft engines, nitrogen oxides reduction relies on advanced combustor design. Lean Direct Injection (LDI) remains as NASA's most likely candidate combustor concept for ultra-high pressure engine cycles, in which the combustor inlet temperature is high, the ignition delay time is short, and very little time exists to premix the fuel before combustion starts. In its extreme form, LDI injects fuel into the flame zone directly, mixing quickly as the fuel burns, reducing the probability and intensity of hot spots and keeping average flame temperature low.

Screening new aircraft combustor concepts usually starts in a flame-tube test facility, where a single fuel injector is tested at various aircraft engine combustor operational conditions. Due to test facility limitations, such as inlet air temperature and pressure, flame-tube tests are usually not able to cover the full set of engine operation conditions. For example, the maximum combustor inlet air pressure is around 4.6 MPa for an aircraft engine with compression ratio of 45:1, while the maximum combustor inlet air pressure for Stand 1 of the CE-5 flame-tube test facility at NASA Glen Research Center is only about 1.7 MPa. To estimate NO_x emissions at the unreachable high engine power conditions, test cell results can be extrapolated based on experimentally-established correlation functions.

For many multipoint LDI concepts reported previously (Refs. 2 to 3), NO_x emissions correlation equations were presented. These correlation equations were based on inlet air pressure, inlet air temperature, air pressure drop across the injector, calculated adiabatic flame temperature, and fuel air ratio. The NO_x correlation equations' dependencies varied with each injector design. As a result, each injection concept has to be assessed separately to determine emission performance. The purpose of this paper is to assess the dependencies of NO_x emissions on inlet air pressure, inlet air temperature, and fuel air equivalence ratio of the first design of Parker Hannifin Corporation's 3-zone LDI concept for NASA's Environmental Responsible Aviation (ERA) project and to estimate its aggregate NO_x emissions performance for an ERA high-pressure engine operational cycle.

Method

Experimental Configuration

Experimental data used in this study were collected on Stand 1 of the CE-5 flame-tube test facility at NASA Glenn Research Center (Ref. 4). Non-vitiated air was pre-heated to maximum temperature of 830 K and maximum pressure of 1.74 MPa. Commercial JP-8 aviation fuel was used. Fuel flow rates were measured by turbine meters and coriolis flow meters, and the air flow rate was measured by a venturi meter. The fuel-air mixture was injected into a flame-tube with a cast ceramic liner. The test section was 300 mm long. A gas probe was placed 200 mm downstream of the injector to collect combustion products for analysis. The rest of the combustion products were cooled down to 500 K by mixing with sprayed water before exiting to an altitude exhaust system. The combusted gas samples were analyzed according to the standard gas-analysis procedure, SAE-ARP1256 (Ref. 5). The simultaneous chemiluminescence method was used to measure NO and NO₂.

The fuel injector tested in this experiment was the first multipoint LDI concept developed by Parker Hannifin under the Environmental Responsible Aviation (ERA) project. Fifteen fuel-air mixers are arrayed in three outwardly-canted panels in place of a traditional single conventional fuel injector. Each fuel-air mixer consists of an air passage with an air swirler, and a fuel nozzle is inserted through the center of the air swirler. Three progressively-larger fuel circuits fed the Pilot, Main1, and Main2 fuel stages. Each fuel stage controlled different number of fuel-air mixers. An older 3-zone design with more injectors is shown in Figure 1 to illustrate the configuration.

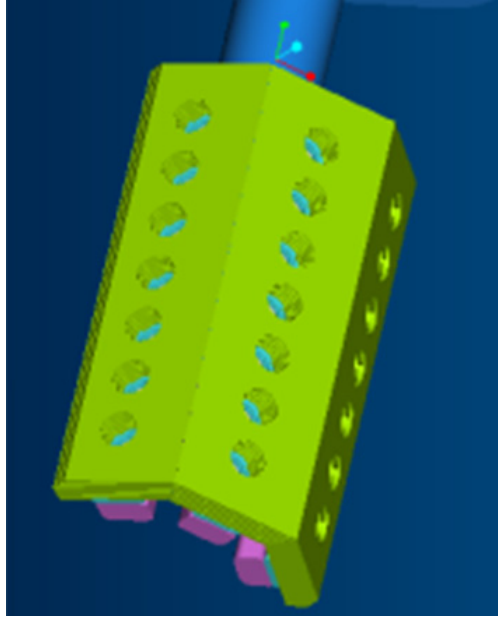


Figure 1.—Picture of an older 3-Z LDI design with more injectors by Parker Hannifin.

The test matrix was designed to maximize the test facility capacities while scaling the operational parameters. Inlet air pressure (P3) varied from 0.69 to 1.72 MPa, and inlet air temperature (T3) varied from 590 to 830 K. Air pressure drop across the dome was 4.0 percent. Fuel air equivalence ratio varied from 0.2 to 0.6. All three fuel stages were used where higher overall fuel air ratio conditions exist. Emission data for this configuration was named as Three F-Stages. For lower power engine conditions where overall fuel air ratios are low, only Pilot and Main1 were used, and the emission data for this configuration was named as Two F-Stages. Light off was done using only the Pilot.

Correlation Methodology

The format of the correlation equation used was similar to the one that had been reported in many previous LDI studies (Refs. 2 and 3) as in Equation (1):

$$EINO_x = K * P_3^{N1} * e^{\frac{T3}{N2}} * \Phi^{N3} \quad (1)$$

With this equation, the NO_x emissions Index value is a function of combustor inlet air temperature (T3, K), inlet air pressure (P3, kPa), and fuel to air equivalence ratio (Φ). K is a constant. N1, N2, and N3 are the dependencies of NO_x emissions on P3, T3, and Φ. These three values were found by plotting the graphs: EINO_x vs. P3, EINO_x vs. T3, and EINO_x vs. Φ. Using these N1, N2, and N3 values as initial guesses, multiple regressions method in Microsoft Excel (Microsoft Corporation) was used to estimate the last unknown variable, K.

Results and Discussion

Figure 2 shows the EINO_x values at various calculated adiabatic flame temperatures (T4) and at three inlet air pressure (P3) conditions: 1,034, 1,379, and 1,724 kPa. This set of data was taken when all three fuel flow manifolds were on (Three F-Stages), and local fuel air ratios were about the same among the 15 fuel-air mixers. Figure 2(a) shows the NO_x emissions data that taken at inlet air temperature (T3) of 828 K. This chart shows couple clear trends. First, the EINO_x data taken at different inlet air pressures are almost parallel to each other. With increased inlet air pressure, the EINO_x value increases. In addition, the

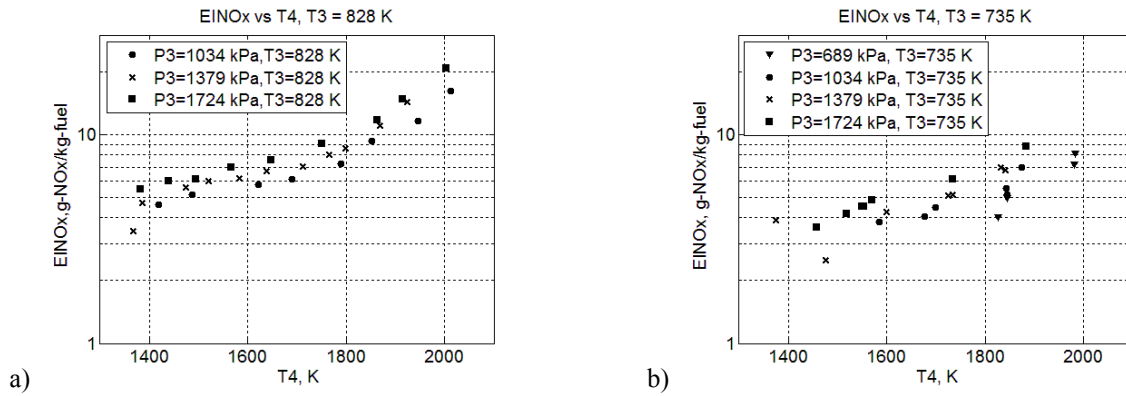


Figure 2.—EINOx vs. T4 at various inlet air pressures and two inlet air temperatures: (a) 828 K and (b) 735 K.

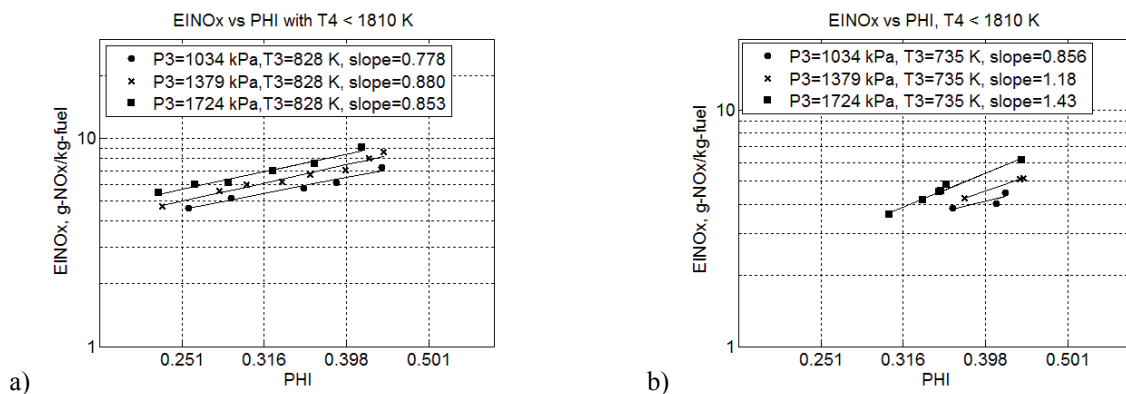


Figure 3.—EINOx vs. PHI at three inlet air pressures and two inlet air temperatures: (a) 828 K and (b) 735 K (for three F-stages data taken at T4 < 1810 K).

NOx emissions increase with the calculated adiabatic flame temperature, and the rate of change increases above T4 of 1810 K. At constant inlet air temperature, the adiabatic flame temperature is approximately a linear function of fuel air equivalence ratio. As a result, the NOx emissions dependency on fuel air equivalence ratio also changed at T4 above 1810 K. Figure 2(b) shows the NOx emissions data taken at an inlet air temperature of 735 K. Similar trends are observed. However, the data are more scattered than the data taken at T3 of 828 K, especially at lower calculated adiabatic flame temperature.

With the format of the correlation equation, the NOx emissions dependencies on inlet air pressure, inlet air temperature, and fuel air equivalence ratio are assumed to be constant and independent of each other. Since the NOx emissions dependency on fuel air equivalence ratio changes above T4 of 1810 K, two equations are used to correlate this set of data across the flame temperature range—one for below and one for above T4 of 1810 K.

The first parameter that was examined is the NOx emissions dependency on fuel air equivalence ratio. Figure 3 shows EINOx vs. Φ chart for the Three F-Stages data taken at T4 less than 1810 K. At an inlet air temperature of 828 K (Fig. 3(a)), the lines are almost parallel to each other with the slopes (N3) ranging from 0.778 to 0.880. These data indicate the NOx emissions dependency on fuel air equivalence ratio is nearly independent of inlet air pressure. At inlet temperature of 735 K (Fig. 3(b)), the range of the slopes (N3) is widened, from 0.856 to 1.430. Due to limited data points, it is hard to conclude that the dependency of fuel air equivalence ratio is varied with inlet air pressure.

To examine the dependency on inlet air pressure or inlet air temperature, the NOx emissions data must be taken at the same fuel air equivalence ratio. As shown in Figure 3, this is not the case. Nevertheless, knowing the dependency on fuel air equivalence ratio, a specific EINOx value ($EINOx_{specific}$) at a specific fuel air equivalence ratio ($\Phi_{specific}$) could be estimated along with the known experimental NOx emissions ($EINOx_{experimental}$) values that taken at various fuel air equivalence ratios ($\Phi_{experimental}$) by using Equation (2):

$$\ln(EINOx_{experimental}) - \ln(EINOx_{specific}) = N3 * (\ln(\Phi_{experimental}) - \ln(\Phi_{specific})) \quad (2)$$

Using the Three F-Stages ($T4 < 1810$ K) experimental NOx emissions data, the EINOx values at various $T3$, various $P3$, and Φ of 0.37 are estimated.

Figure 4(a) assesses the NOx emissions dependency on inlet air pressure ($N1$) for the Three F-Stages data ($T4 < 1810$ K). At inlet air temperature of 735 K, the NOx emissions depend on inlet air pressure to the 0.49 power, and at inlet air temperature of 828 K, it depends on inlet air pressure to the 0.48 power. For the inlet air temperature dependency (Fig. 4(b)), NOx emissions are an exponential function of $T3/170$, except at inlet air pressure of 1,034 kPa, $T3/147$.

Using these $N1$, $N2$, and $N3$ values as initial guesses, multiple regressions method in Excel was used to estimate the last unknown variable, K . The NOx emissions correlation equation for the Three F-Stages data ($T4 < 1810$ K) is listed as the second equation in Table 1. Two more correlation equations were developed with the same approach (listed in Table 1): one for Three F-Stages data ($T4 > 1810$ K) and one for the Two F-Stages data. Figures 5 to 8 are the relative charts that demonstrate the assessments on the NOx emissions dependencies. The experimental vs. calculated EINOx emission data are plotted in Figure 9(a). The R-squared value is 0.99.

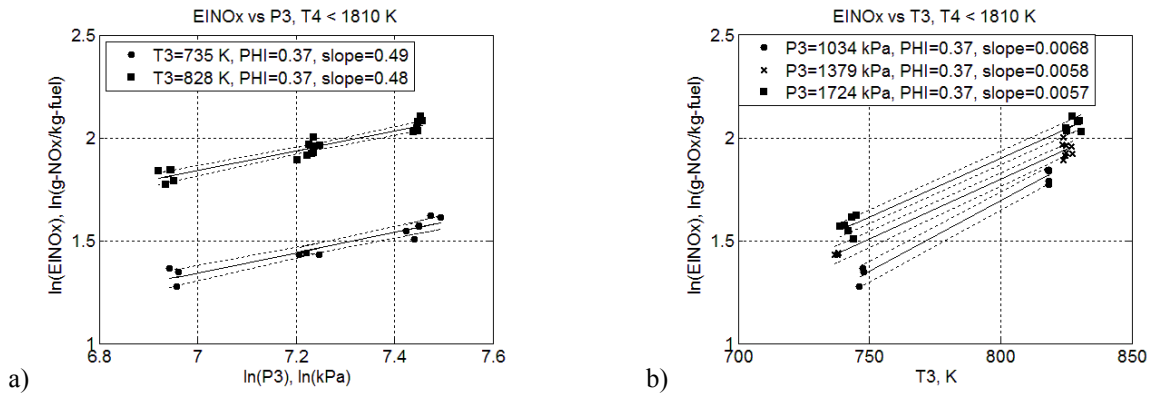


Figure 4.—(a) EINOx vs. P3 and (b) EINOx vs. T3 at fuel air equivalence ratio of 0.37 (for Three F-Stages data taken at $T4 < 1810$ K).

TABLE 1.—THE THREE NOx EMISSIONS CORRELATION EQUATIONS FOR PARKER HANNIFIN'S MULTIPOINT LDI INJECTOR

(1) Two F-Stages	$EINOx = 0.364 * P_3^{0.60} * e^{\frac{T_3}{200}} * \Phi^{3.03}$
(2) Three F-Stages ($T4 < 1810$ K)	$EINOx = 0.0052 * P_3^{0.46} * e^{\frac{T_3}{170}} * \Phi^{0.97}$
(3) Three F-Stages ($T4 > 1810$ K)	$EINOx = 0.0058 * P_3^{0.516} * e^{\frac{T_3}{132}} * \Phi^{3.32}$

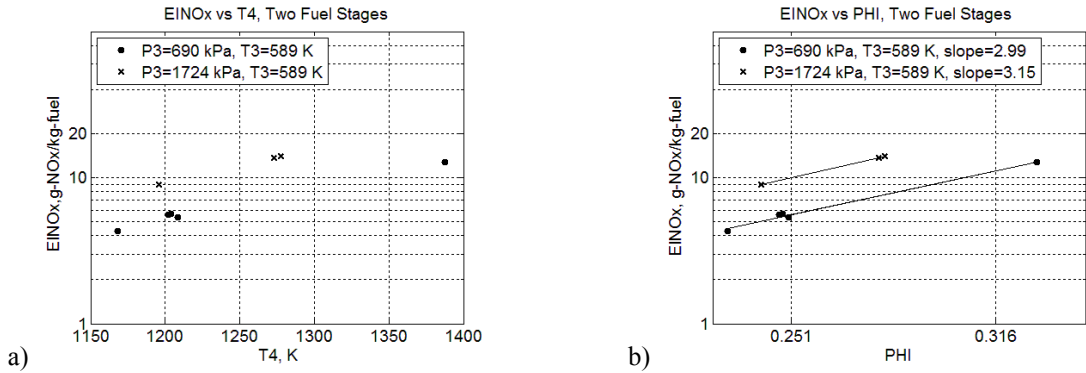


Figure 5.—(a) EINOx vs. T4 and (b) EINOx vs. PHI at various inlet air pressures for Two F-Stages data.

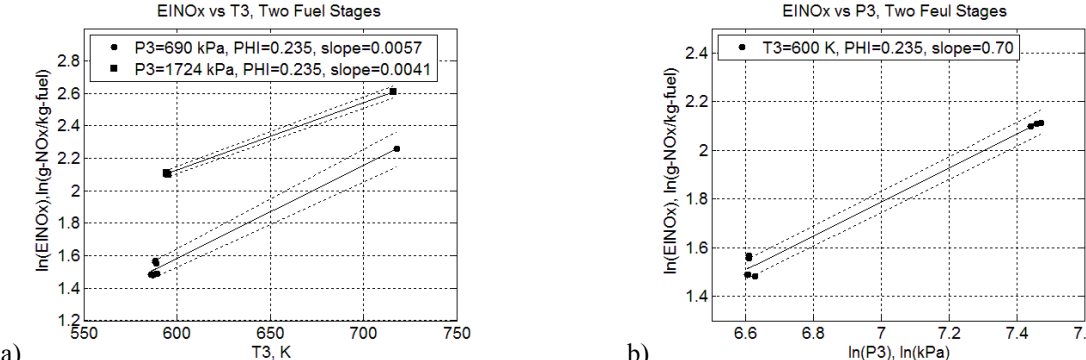


Figure 6.—(a) EINOx vs. T3 and (b) EINOx vs. P3 for Two F-Stages data at fuel air equivalence ratio of 0.235.

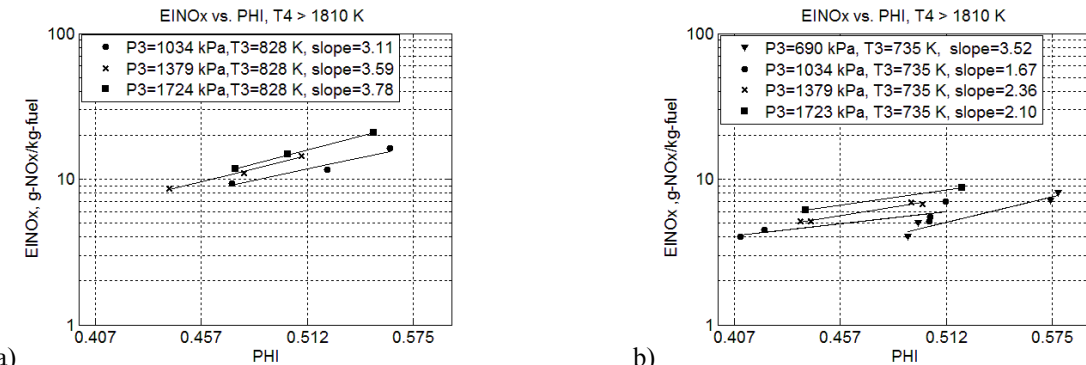


Figure 7.—EINOx vs. PHI at three inlet air pressures and two inlet air temperatures: (a) 828 K and (b) 735 K. (for Three F-Stages data taken at T4 > 1810 K).

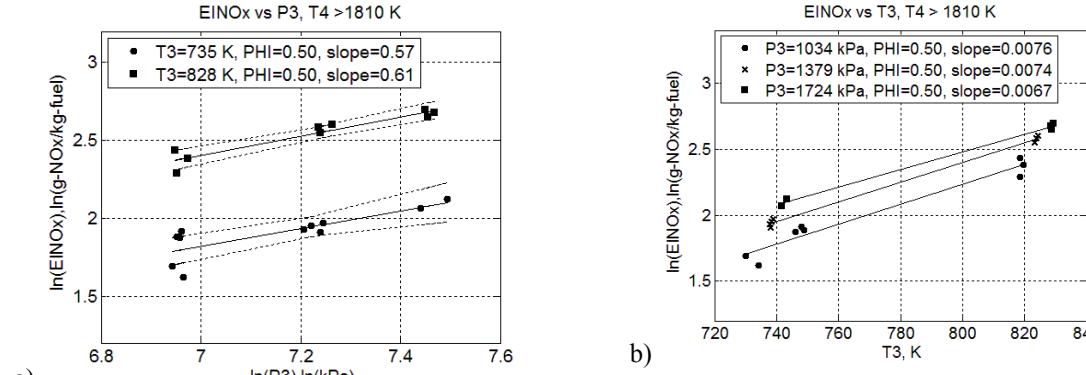


Figure 8.—(a) EINOx vs. P3 and (b) EINOx vs. T3 at fuel air equivalence ratio of 0.50 (for Three F-Stages data taken at T4 > 1810 K).

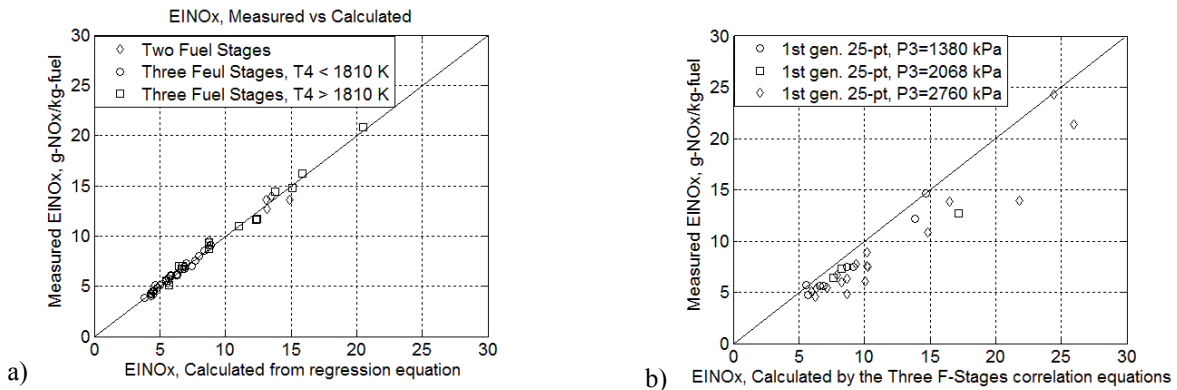


Figure 9.—(a) measured vs. calculated NOx emissions for the new 3-zone LDI concept with R-square value of 0.99 and (b) measured EINOx ($P_3 = 1380, 2068,$ and 2760 kPa, $T_3 = 810$ K) at various Φ vs. calculated EINOx by the Three F-Stages correlation equations for Parker’s 1st generation 25-pt LDI concept (Ref. 3) (R-square = 0.69).

TABLE 2.—LANDING AND TAKE-OFF CYCLE NOx EMISSIONS USING A 55:1 PRESSURE-RATIO ENGINE CYCLE

Power condition	Cyclic time, min	NOx, EI, g/kg
7%	26	1.68
30%	4	3.57
85%	2.2	24.7
100%	0.7	52.4
Total LTO NOx		16.4

Comparing these three equations, the variations in NOx emissions dependencies on inlet air pressure (N1) and inlet air temperature (N2) are relatively small. NOx emissions vary as inlet air pressure exponent of 0.46 to 0.60 and an exponential function of $T_3/132$ to $T_3/200$. In comparison, the dependency exponent of NOx emissions on fuel air equivalence ratio (N3) varies more than three times (from 0.97 to 3.32 power) as fewer fuel injection points are used (Two F-Stages) or when theoretical adiabatic flame temperature exceeds 1810 K with three fuel stages on.

With only two fuel stages (Pilot and Main1) on, the NOx emissions depend on fuel air equivalence ratio to the 3.03 power. Two F-Stages usually applies at low engine power conditions, where inlet air temperature and pressure are low, and less than half of the 15 fuel-air mixers are used for fuel injection. As the results, local fuel air ratio and the fuel drop size are relatively higher and larger than for the Three F-Stages configuration. As the local fuel air ratio increases, more local hot spots might arise and create more NOx emissions. Thus, NOx emissions are more sensitive to fuel air equivalence ratio.

When comparing the two Three F-Stages correlation equations, NOx emissions dependencies on inlet air pressure, inlet air temperature, and fuel air equivalence ratio increase at theoretical adiabatic flame temperature above 1810 K. As for fuel air equivalence ratio, the NOx emissions dependency (N3) has increased more than three times. This raise might be due to the increase in thermal NOx production. According to Lefebvre (Ref. 6), thermal NOx production is an exponential function of the flame temperature. At flame temperature above around 1850 K, the thermal NOx production proceeds at a significant rate compared to other NOx production mechanisms for lean pre-mixed flame.

The ICAO Landing and Take-off (LTO) cycle involves four engine power conditions: 100 percent (take-off), 85 percent (climbing), 30 percent (approaching), and 7 percent (taxiing). Using the three correlation equations, the NOx emissions for these four conditions are estimated and listed in Table 2. The total LTO NOx emissions value is found to be 16.4 g-NOx/ kg-fuel, 66 percent below the ICAO CAEP-6 standard using a 55:1 pressure-ratio engine cycle. This value is calculated as overall NOx emissions over the total fuel burn during the LTO cycle. It depends on EINOx emission value, fuel burning rate, and cyclic time of each power condition.

The influence of scaling inlet air temperature and pressure from the test condition to the full-power condition in this case is roughly about equal. The resulting scale up factors for the inlet air temperature and pressure corrections are, respectively 2.7 and 2. For 85 and 100 percent engine power conditions, the EINOx values are, respectively 24.7 and 52.4 g-NOx/kg-fuel. These two numbers account for about 90 percent of the ICAO LTO NOx values. Uncertainty with these extrapolations would heavily affect the validity of the NOx level for the ICAO LTO cycle. If NOx emissions dependency on inlet air pressure increases from exponent of 0.516 to 0.53, the total LTO NOx value would increase from 16.4 to 17.8 g-NOx/kg-fuel.

NOx emissions at a higher inlet air pressure were previously measured with Parker's first generation 25-points LDI concept (Ref. 3). The Three F-Stages correlation equations are used to estimate the NOx emissions at the same test conditions, inlet air pressure of 1380, 2068, and 2760 kPa and inlet air temperature of 810 K at various fuel air equivalence ratios. The experimental EINOx values (from the 25-points LDI concept data) vs. calculated EINOx values are shown on Figure 9(b) with R-squared value of 0.69. The NOx emissions trend is similar between the two, but the calculated EINOx values are higher than the experimental EINOx values. This result further indicates each injection concept has to be assessed separately to determine emission performance. For each injector design, residence time and flow path of the combustion products are different. These two factors heavily affect the NOx emissions.

Conclusions

Three correlation equations were developed for a 3-zone multipoint LDI injector by examining the NOx emissions dependencies on inlet air temperature, inlet air pressure, and fuel-to-air equivalence ratio. These results showed the NOx emissions is a strong function of combustion inlet air temperature and fuel air equivalence ratio but a weaker function of inlet air pressure. Other than these three design parameters, many other engine design and operational parameters could also affect the NOx emissions, such as air pressure drop across the injector and fuel flow split among the fuel-air mixers. Thus, to increase the flexibility of the equations, additional design parameters should add to the correlation equation once the corresponding NOx emissions dependency is determined. Small inaccuracy with inlet air pressure extrapolation would heavily affect the validity of the NOx level for the ICAO LTO cycle. Since maximum inlet air pressure tested was less than 50 percent of the full power engine inlet air pressure, future experiment at higher inlet air pressure condition is needed to confirm the NOx emissions dependency on inlet air pressure.

References

1. Chowen Wey, and Lourdes Q. Maurice, Exploring Aviation's Environmental Impact, AIAA-2003-5993, 2003.
2. Robert Tacina, Phil Lee, and Changlie Wey, A Lean-Direct-Injection Combustor Using A 9 Point Swirl-Venturi Fuel Injector, ISABE-2005-1106, 2005.
3. Robert Tacina, Changlie Wey, Peter Liang and Adel Mansour, A Low NOx Lean-Direct Injection, MultiPoint Integrated Module Combustor Concept for Advanced Aircraft Gas Turbines, NASA/TM-2002-211347, 2002.
4. J. Bianco, NASA Lewis Research Center's combustor test facilities and capabilities, AIAA-1995-2681, 1995.
5. Procedure for the Continuous Sampling and Measurement of Gaseous Emissions from Aircraft Turbine Engines, SAE ARP1256-2006, 2006.
6. Lefebvre, Arthur H, Gas Turbine Combustion, Taylor and Francis, Philadelphia, 2nd edition, 1998, P328.

REPORT DOCUMENTATION PAGE			Form Approved OMB No. 0704-0188		
<p>The public reporting burden for this collection of information is estimated to average 1 hour per response, including the time for reviewing instructions, searching existing data sources, gathering and maintaining the data needed, and completing and reviewing the collection of information. Send comments regarding this burden estimate or any other aspect of this collection of information, including suggestions for reducing this burden, to Department of Defense, Washington Headquarters Services, Directorate for Information Operations and Reports (0704-0188), 1215 Jefferson Davis Highway, Suite 1204, Arlington, VA 22202-4302. Respondents should be aware that notwithstanding any other provision of law, no person shall be subject to any penalty for failing to comply with a collection of information if it does not display a currently valid OMB control number. PLEASE DO NOT RETURN YOUR FORM TO THE ABOVE ADDRESS.</p>					
1. REPORT DATE (DD-MM-YYYY) 01-04-2014	2. REPORT TYPE Technical Memorandum		3. DATES COVERED (From - To)		
4. TITLE AND SUBTITLE NOx Emissions Performance and Correlation Equations for a Multipoint LDI Injector			5a. CONTRACT NUMBER		
			5b. GRANT NUMBER		
			5c. PROGRAM ELEMENT NUMBER		
6. AUTHOR(S) He, Zhuohui, J.; Chang, Clarence, T.; Follen, Caitlin, E.			5d. PROJECT NUMBER		
			5e. TASK NUMBER		
			5f. WORK UNIT NUMBER WBS 699959.02.09.03.01		
7. PERFORMING ORGANIZATION NAME(S) AND ADDRESS(ES) National Aeronautics and Space Administration John H. Glenn Research Center at Lewis Field Cleveland, Ohio 44135-3191			8. PERFORMING ORGANIZATION REPORT NUMBER E-18858		
9. SPONSORING/MONITORING AGENCY NAME(S) AND ADDRESS(ES) National Aeronautics and Space Administration Washington, DC 20546-0001			10. SPONSORING/MONITOR'S ACRONYM(S) NASA		
			11. SPONSORING/MONITORING REPORT NUMBER NASA/TM-2014-218116		
12. DISTRIBUTION/AVAILABILITY STATEMENT Unclassified-Unlimited Subject Categories: 5 and 7 Available electronically at http://www.sti.nasa.gov This publication is available from the NASA Center for AeroSpace Information, 443-757-5802					
13. SUPPLEMENTARY NOTES					
14. ABSTRACT Lean Direct Injection (LDI) is a combustor concept that reduces nitrogen oxides (NOx) emissions. This paper looks at a 3-zone multipoint LDI concept developed by Parker Hannifin Corporation. The concept was tested in a flame-tube test facility at NASA Glenn Research Center. Due to test facility limitations, such as inlet air temperature and pressure, the flame-tube test was not able to cover the full set of engine operation conditions. Three NOx correlation equations were developed based on assessing NOx emissions dependencies on inlet air pressure (P3), inlet air temperature (T3), and fuel air equivalence ratio (Φ) to estimate the NOx emissions at the unreachable high engine power conditions. As the results, the NOx emissions are found to be a strong function of combustion inlet air temperature and fuel air equivalence ratio but a weaker function of inlet air pressure. With these three equations, the NOx emissions performance of this injector concept is calculated as a 66 percent reduction relative to the ICAO CAEP-6 standard using a 55:1 pressure-ratio engine cycle. Uncertainty in the NOx emissions estimation increases as the extrapolation range departs from the experimental conditions. Since maximum inlet air pressure tested was less than 50 percent of the full power engine inlet air pressure, a future experiment at higher inlet air pressure conditions is needed to confirm the NOx emissions dependency on inlet air pressure.					
15. SUBJECT TERMS Nitrogen oxide emission; Lean direct injection; Aircraft engine combustor; Correlation equation					
16. SECURITY CLASSIFICATION OF:			17. LIMITATION OF ABSTRACT	18. NUMBER OF PAGES	19a. NAME OF RESPONSIBLE PERSON
a. REPORT	b. ABSTRACT	c. THIS PAGE			STI Help Desk (email:help@sti.nasa.gov)
U	U	U	UU	16	19b. TELEPHONE NUMBER (include area code) 443-757-5802

