

SYSTEMATIC CENTER-TO-LIMB VARIATION IN MEASURED HELIOSEISMIC TRAVEL TIMES AND ITS EFFECT ON INFERENCES OF SOLAR INTERIOR MERIDIONAL FLOWS

JUNWEI ZHAO¹, KAORI NAGASHIMA¹, R. S. BOGART¹, A. G. KOSOVICHEV¹, AND T. L. DUVAL, JR.²

¹ W. W. Hansen Experimental Physics Laboratory, Stanford University, Stanford, CA 94305-4085, USA

² Solar Physics Laboratory, NASA Goddard Space Flight Center, Greenbelt, MD 20771, USA

Received 2011 December 21; accepted 2012 March 8; published 2012 March 20

ABSTRACT

We report on a systematic center-to-limb variation in measured helioseismic travel times, which must be taken into account for an accurate determination of solar interior meridional flows. The systematic variation, found in time–distance helioseismology analysis using *SDO/HMI* and *SDO/AIA* observations, is different in both travel-time magnitude and variation trend for different observables. It is not clear what causes this systematic effect. Subtracting the longitude-dependent east–west travel times, obtained along the equatorial area, from the latitude-dependent north–south travel times, obtained along the central meridian area, gives remarkably similar results for different observables. We suggest this as an effective procedure for removing the systematic center-to-limb variation. The subsurface meridional flows obtained from inversion of the corrected travel times are approximately 10 m s^{-1} slower than those obtained without removing the systematic effect. The detected center-to-limb variation may have important implications in the derivation of meridional flows in the deep interior and needs to be better understood.

Key words: Sun: helioseismology – Sun: interior – Sun: oscillations

Online-only material: color figures

1. INTRODUCTION

An accurate determination of the meridional flow speed in both the solar photosphere and the solar interior is crucial to the understanding of solar dynamo and predicting solar cycle variations. For example, Dikpati et al. (2006) suggested that the slow-down of the meridional circulation during the solar-cycle maximum could change the duration of the following minimum and delay the onset of the next solar cycle. Hathaway & Rightmire (2010) found that the meridional flow speed was substantially faster during the solar minimum of Cycle 23 than during the previous minimum, and suggested that this might explain the prolonged minimum of Cycle 23. Using flux-transport dynamo model simulations, Dikpati et al. (2010) suggested that the prolonged minimum of Cycle 23 might be due to the poleward meridional flow being extended all the way to the pole in Cycle 23, unlike in Cycle 22 where the flow switched to equator-ward near the latitude of 60° . All these works demonstrate that an accurate measurement of the meridional flow speed is very important.

The photospheric meridional flow speed can be determined by tracking certain photospheric features, such as magnetic structures and supergranules (e.g., Komm et al. 1993; Hathaway & Rightmire 2010; Hathaway et al. 2010; Gizon 2004; Švanda et al. 2006), although it is not quite clear how well the motions of these surface features represent the photospheric plasma flows. The photospheric meridional flow speed can also be inferred from Doppler shift measurements (e.g., Hathaway et al. 1996; Ulrich 2010), and recently Ulrich (2010) made extensive comparisons of the meridional flow speeds obtained by different methods. The meridional flows in the solar interior are primarily determined by helioseismology, i.e., by measuring frequency shifts between poleward and equatorward traveling acoustic waves (e.g., Braun & Fan 1998; Krieger et al. 2007; Roth & Stix 2008), and by use of local helioseismology techniques, namely, ring-diagram analysis and time–distance helioseismology (e.g., Giles et al. 1997; Chou & Dai 2001; Haber et al. 2002; Zhao & Kosovichev 2004; González Hernández et al. 2008).

The subsurface meridional flow speeds obtained by the two different local helioseismology techniques are in reasonable agreement for at least the upper 20 Mm of the convection zone (e.g., Hindman et al. 2004). However, the agreement between the two analysis techniques cannot rule out that both techniques may be affected by the same or similar systematic effects. In this Letter, we report on a systematic center-to-limb variation in helioseismic travel times measured by the time–distance helioseismology technique, which was previously unnoticed but must be taken into account in the inference of the subsurface meridional flows. Other helioseismology techniques, such as the ring-diagram analysis, may also be affected by a similar systematic effect (R. Bogart 2011, private communication). We develop an empirical correction procedure by measuring the center-to-limb variation along the equatorial area during the periods when the solar rotation axis is perpendicular to the line of sight, i.e., when the solar B-angle is close to 0° . This correction scheme provides consistent results for the acoustic travel times in the north–south directions measured from different Helioseismic and Magnetic Imager (HMI) observables and Atmospheric Imaging Assembly (AIA) chromospheric intensity variations. We introduce our data analysis procedure and present results in Section 2, and discuss the results and their implications in Section 3.

2. DATA ANALYSIS AND RESULTS

2.1. Data Analysis Tools

To facilitate analysis of the large amount of data from the HMI (Scherrer et al. 2012; Schou et al. 2012) on board the *Solar Dynamics Observatory (SDO)* (Pesnell et al. 2012), a time–distance helioseismology data-analysis pipeline was developed and implemented at the HMI–AIA Joint Science Operation Center (Zhao et al. 2012). Every 8 hr, the pipeline provides measurements of acoustic travel times and generates maps of subsurface flow and wave-speed perturbations by inversion of the measured travel times, covering nearly the full-disk Sun with an area of $120^\circ \times 120^\circ$.

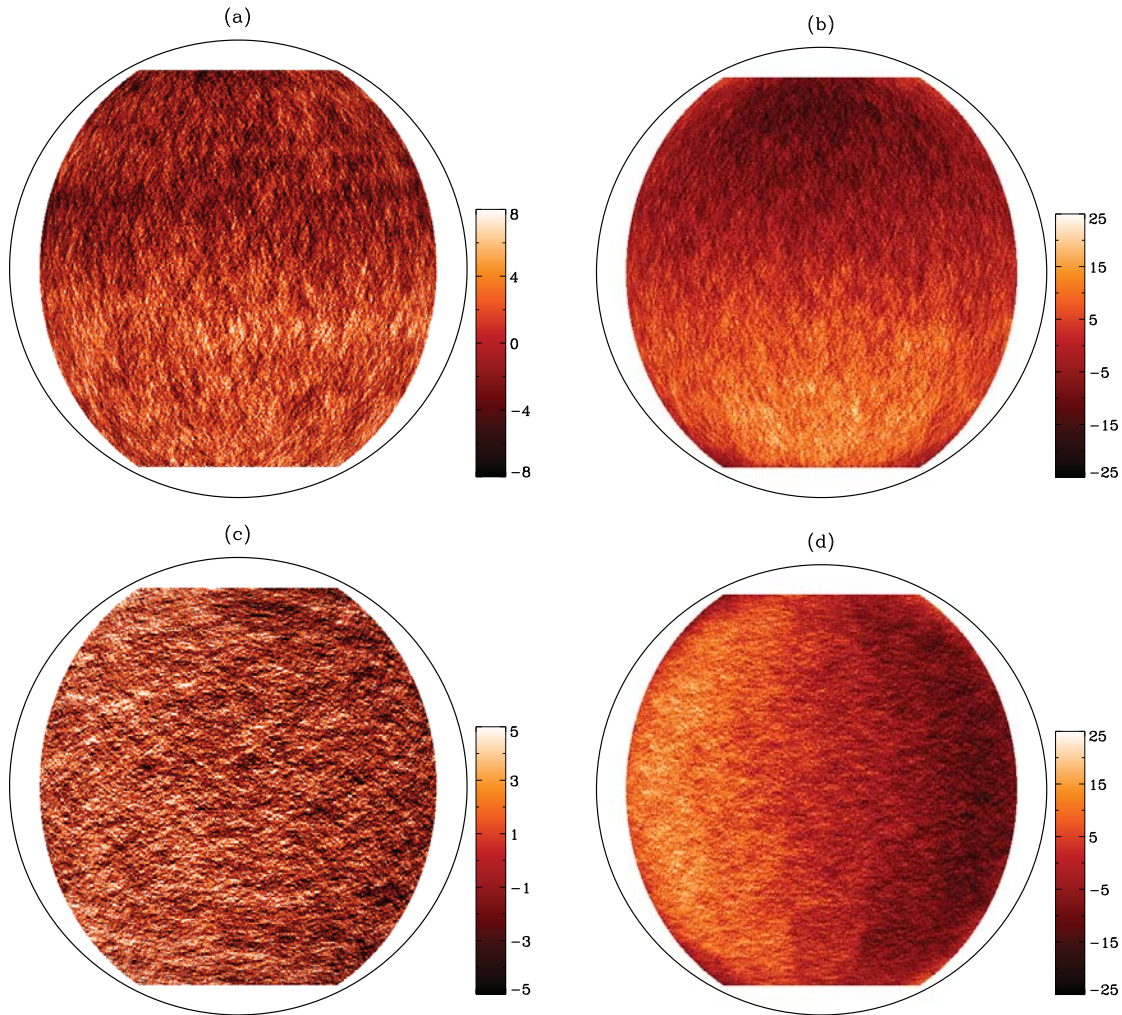


Figure 1. Travel-time maps (in unit of s), covering 120° in both longitude and latitude, for τ_{ns} obtained from (a) HMI Dopplergrams and from (b) HMI continuum intensity, and for τ_{we} obtained from (c) Dopplergrams and from (d) continuum intensity after a longitudinally averaged profile, representing the differential rotation, is removed through all longitudes. Note that color scales are not the same in all panels.

(A color version of this figure is available in the online journal.)

For the pipeline processing, we select 25 overlapping areas on the solar disk and analyze the 8 hr sequences of solar oscillation data separately for each region. Acoustic travel-time maps are obtained for 11 selected wave travel distances and are inverted to derive maps of subsurface velocity and wave-speed perturbations from the surface to about 20 Mm in depth (Zhao et al. 2012). Then the results for individual regions are merged into nearly full-disk maps covering 120° in both longitude and latitude, with a spatial sampling of 0.12 pixel^{-1} on a uniform longitude–latitude grid. The pipeline gives acoustic travel-time measurements from two different fitting techniques (Couvidat et al. 2012) and inversion results based on ray-path and Born-approximation sensitivity kernels. Both measurement uncertainties for different distances and inversion error estimates for different inversion depths are given in Zhao et al. (2012). In this Letter, only the acoustic travel times obtained from Gabor-wavelet fitting (Kosovichev & Duvall 1997) and inversion results based on the ray-path approximation kernels are presented.

Although the pipeline is designed to analyze the HMI Dopplergrams, it can nevertheless be used to analyze other HMI observables that carry solar oscillation signals, e.g., continuum intensity, line-core intensity, and line depth. The full-disk data

from the 1600 \AA and 1700 \AA channels of AIA (Lemen et al. 2012) on board *SDO* can also be used for helioseismology studies with good accuracy (Howe et al. 2011). In this study, we compare results obtained from the four HMI observables and the AIA 1600 \AA data following the same analysis procedure. This comparison helps us to identify the systematic center-to-limb variation and develop a correction method.

2.2. Center-to-limb Variation in Measured Travel Times

The north–south (τ_{ns}) and west–east (τ_{we}) acoustic travel-time differences approximately represent the north–south and west–east flow components, respectively, although a full inversion is required to determine more precisely these flows. We first show the measured travel-time differences and then present the inversion results. We choose a 10 day period of 2010 December 1 through December 10, when the solar B-angle between the equator and the ecliptic is close to 0° to avoid complications caused by leakage of the solar rotation signal into the meridional flow measurements.

The upper panels of Figure 1 show the nearly full-disk map of τ_{ns} , averaged over the 10 day period, measured from the HMI Dopplergram and continuum intensity data for an

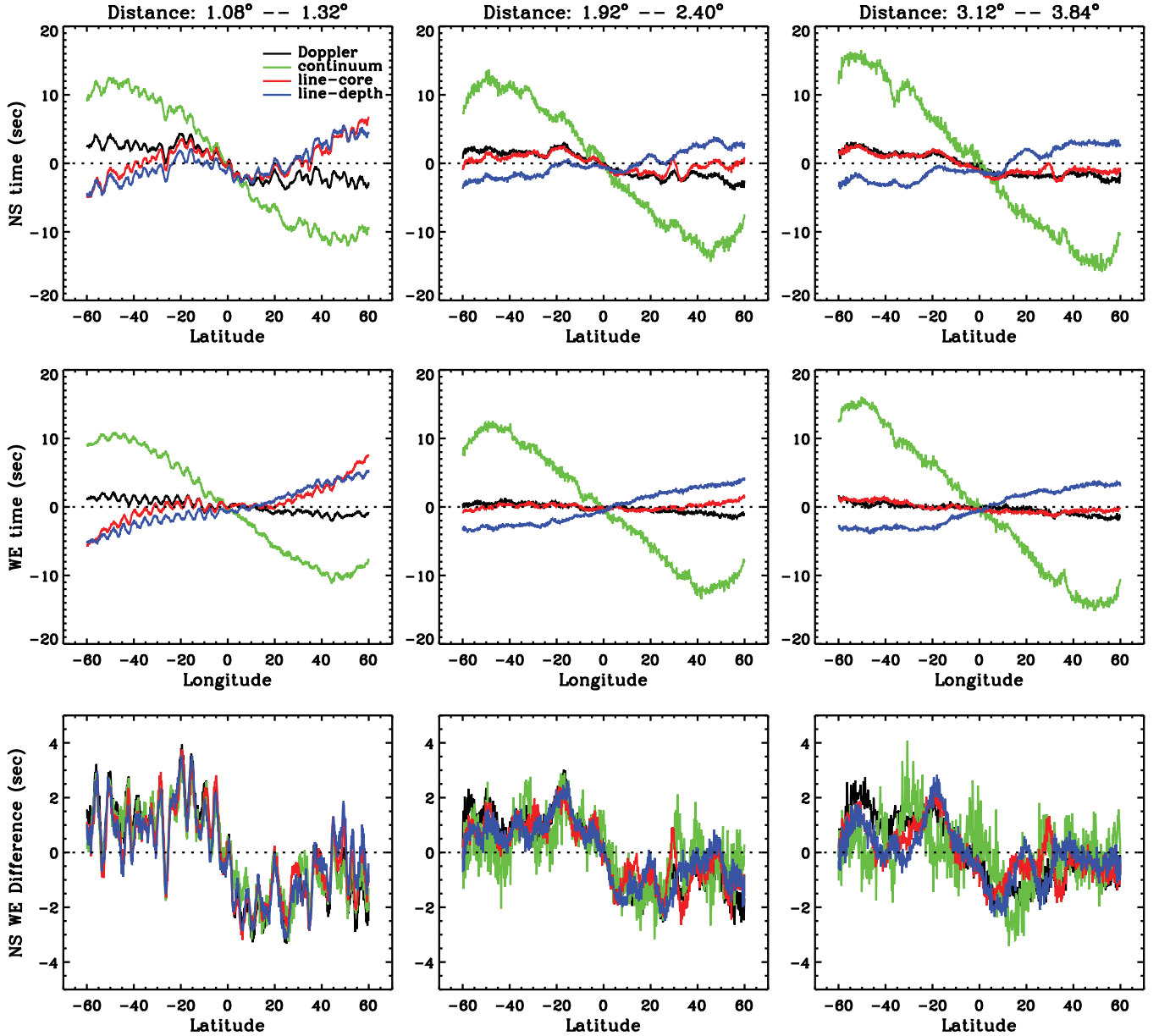


Figure 2. Top: averaged curves of latitude-dependent τ_{ns} , obtained from different HMI observables and for different measurement distances. Middle: averaged curves of longitude-dependent τ_{we} , obtained from different observables and for different measurement distances. Bottom: differences of τ_{ns} and τ_{we} . Note that the vertical scales for the upper two rows are different from those for the bottom row.

(A color version of this figure is available in the online journal.)

acoustic travel distance of $1^{\circ}08$ – $1^{\circ}38$. The general pattern of positive τ_{ns} in the southern hemisphere and negative τ_{ns} in the northern hemisphere is usually thought to be caused by the interior poleward meridional flows. However, the apparent differences between the magnitude of τ_{ns} obtained from the Doppler data and that obtained from the continuum intensity data indicate that there are additional systematic variations. The lower panels show the averaged τ_{we} maps measured from the same observables after the latitude-dependent travel times caused by the differential rotation, obtained by averaging the measurements of all longitudes, are subtracted. One would expect τ_{we} to be relatively flat along same latitudes because the solar rotation does not vary significantly with longitude, but both τ_{we} maps show systematic travel-time variations along the same latitudes, positive in the eastern hemisphere and negative in the western hemisphere. The longitudinal variation

is quite significant for the measurements from the intensity data (Figure 1(d)) and small but not negligible for the measurements from the Dopplergram data (Figure 1(c)).

To more quantitatively illustrate this systematic variation, we average τ_{ns} in a 20° wide band along the central meridian as a function of latitude and display the averaged curves in the top panels of Figure 2 for three selected measurement distances and for the four HMI observables: Doppler velocity, continuum intensity, line-core intensity, and line depth. In the middle-row panels, we show the corresponding τ_{we} curves obtained by averaging over a 20° wide band along the equator as a function of longitude (hereafter, longitude is relative to the central meridian). If there were no systematic center-to-limb variation in the measured acoustic travel times, τ_{ns} obtained from the different observables would agree with each other and τ_{we} would remain flat for all observables. But clearly, the measurements

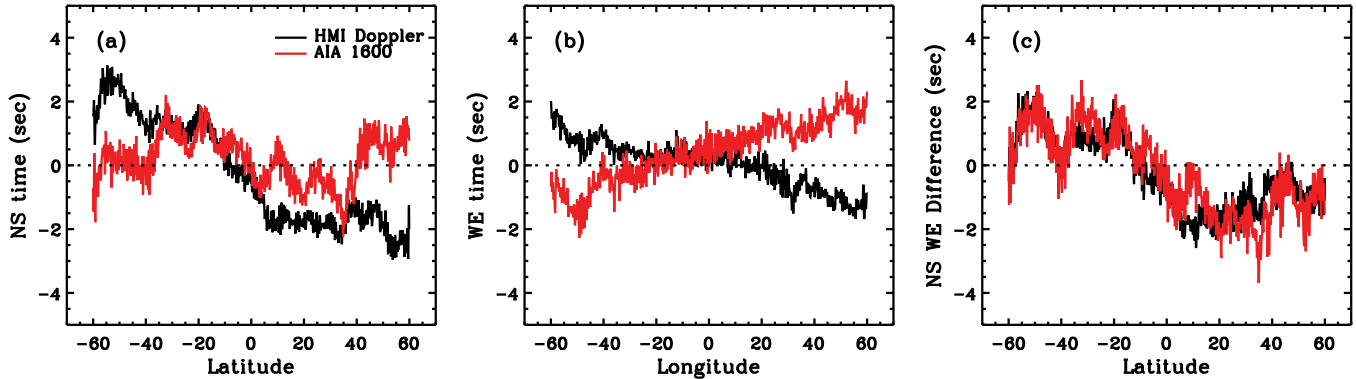


Figure 3. (a) Averaged latitude-dependent τ_{ns} , obtained from HMI Dopplergrams and from AIA 1600 Å data for a measurement distance of $3^{\circ}12\text{--}3^{\circ}84$. (b) Averaged longitude-dependent τ_{we} for these two observables. (c) Differences of τ_{ns} and τ_{we} . (A color version of this figure is available in the online journal.)

are not as expected. Among all these measurements, the τ_{ns} curves show not only different magnitude of travel-time shifts but sometimes also opposite variation trends. For τ_{we} , it is found that the measurements from the Dopplergrams have the smallest systematic variations and are similar to the line-core intensity measurements at larger distances. However, the travel times measured from the continuum intensity and line-depth data show not just substantial travel-time shifts for all measurement distances but also opposite center-to-limb variations. It is quite clear that the travel-time variations along the equator are not caused by solar flow but represent a systematic center-to-limb variation. If we treat the longitude-dependent τ_{we} variations along the equatorial area as the systematic center-to-limb variations, and subtract these variations from the latitude-dependent τ_{ns} measured using the corresponding observables, we get the residual curves shown in the bottom-row panels of Figure 2. It is remarkable that for all the measurement distances, the results from all four HMI observables are in reasonable agreement. This suggests that the residual travel times correspond to the subsurface meridional flow signals.

It was demonstrated that the *SDO*/AIA 1600 Å data are also suitable to perform helioseismology analysis (Howe et al. 2011). Figure 3 shows a comparison of the results obtained from the HMI Dopplergrams and the AIA 1600 Å data for one selected measurement distance, $3^{\circ}12\text{--}3^{\circ}84$. Similarly, τ_{ns} measured from the AIA 1600 Å data also differ from that measured from the HMI Dopplergram. The τ_{we} measured from the AIA data also show systematic variations, though its longitudinal trend is opposite to that measured from HMI continuum intensity and the variation magnitude is much smaller. The residual, obtained after subtracting the longitude-dependent τ_{we} from the latitude-dependent τ_{ns} for AIA 1600 Å, is quite similar to that obtained from the HMI Dopplergrams and other HMI observables. This result is particularly remarkable because HMI and AIA are different instruments observing in different spectral lines: AIA in 1600 Å and HMI in Fe I 6173 Å, which are formed at different heights in the solar atmosphere.

2.3. Effect on Meridional Flow Inversions

The systematic center-to-limb travel-time variations would have an apparent effect on the inference of subsurface meridional flows obtained by inversion. Here, we investigate how the inferred meridional flow speed changes after removal of this systematic effect.

We employ the time–distance helioseismology pipeline code developed for inversion of the acoustic travel times (Zhao et al. 2012). The inversion results are shown in Figure 4. The middle row of Figure 4 presents inversion results obtained from travel-time measurements shown in Figure 2, but with an extension of 15° closer to both poles and both limbs to better illustrate that the removal of the systematic effect also helps to improve inversions in high-latitude areas. The top and bottom rows of Figure 4 show results obtained from 2010 June 1–10 and 2011 June 1–10, when the solar B-angle were also close to 0° . It can be seen from left columns of Figure 4 that above $\sim 55^{\circ}$ latitude, the inferred meridional flow drops in speed and becomes equatorward for the depth of 0–1 Mm, but remains poleward deeper than 3 Mm. This is a suspicious behavior for the meridional flows. We then antisymmetrize the east–west direction velocity caused by the center-to-limb variations (middle column of Figure 4) and subtract it from the inferred meridional velocity. The residual subsurface meridional flows show much more consistent behaviors at different depths in high-latitude areas (right column of Figure 4). From Figure 4, one can also find that the center-to-limb variation measured from equatorial area slightly change with time, and why there is such a change is not understood and worth further study.

The removal of the center-to-limb variation in the measured travel times also decreases the inferred flow speed by nearly 10 m s^{-1} . This indicates that the subsurface meridional flows derived from the previous time–distance studies (e.g., Zhao & Kosovichev 2004) might have overestimated the flow speed by a large fraction. Figure 5 shows that after removal of the systematic effect, the meridional flow speed is closer in magnitude to the results obtained by the magnetic feature tracking (Hathaway & Rightmire 2010) and surface Doppler measurements (Ulrich 2010). Note that the results from the magnetic feature tracking and from the MWO Doppler observations shown in Figure 5 are both averaged over a 6 month period with our analyzed 10 day period in the middle. The difference of analysis period may result in some differences seen in the figure. The meridional flows obtained from this study are displayed in Figure 5 after a 2° spatial averaging to remove the strong fluctuations caused by supergranular flows.

3. DISCUSSION

The analysis of acoustic travel times obtained from different observables of the HMI and AIA instruments on *SDO* by the time–distance helioseismology technique has revealed a

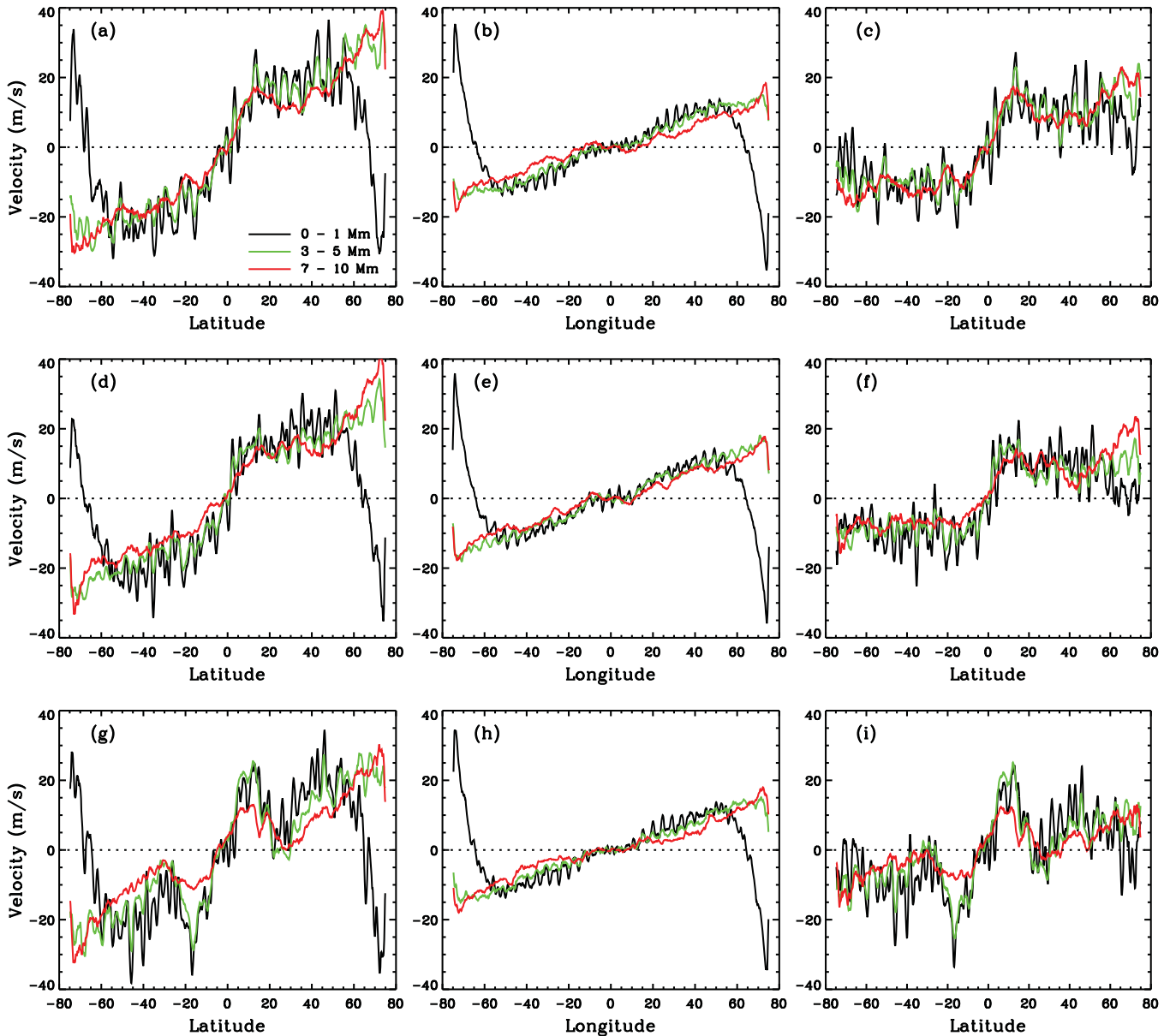


Figure 4. Results obtained from the periods of 2010 June 1–10 (top row), 2010 December 1–10 (middle row), and 2011 June 1–10 (bottom row). (a) Meridional flow velocity for different depths, obtained by inversions of acoustic travel times measured from the HMI Dopplergram and without removal of the systematic center-to-limb variations. (b) Antisymmetrized east–west velocity obtained by inversion, representing the center-to-limb variations. (c) Meridional flow velocities after removal of the systematic center-to-limb variations. (d)–(f) and (g)–(i) are the same as (a)–(c) but for different time periods.

(A color version of this figure is available in the online journal.)

systematic center-to-limb variation. The systematic variation is different for different observables, and range from ~ 2 s for the HMI Dopplergram to ~ 10 s for the continuum intensity measurements. For an accurate determination of subsurface meridional flows, and also for more accurate inference of full-disk subsurface flow fields, this systematic effect should be removed. We have developed an empirical correction procedure by removing the systematic variation measured along the equatorial area during the period when solar B-angle is close to 0° . This correction reconciles the latitude-dependent τ_{ns} measured from different observables and reduces the inferred meridional flow speed by about 10 m s^{-1} .

It is not quite clear what causes this systematic center-to-limb effect. However, this effect is unlikely caused by instrumental or data calibration, because it is observed in the data from two different instruments, HMI and AIA, and it exists in different

observables of HMI. We also rule out the following factors as causes of this effect: finite speed of light, contribution of horizontal wave component, and foreshortening effect. Due to the finite speed of light, acoustic wave signals observed at high latitude and observed near the equator are not simultaneous, but this effect is negligible given the small measurement distances used in this study. The horizontal wave component (Nigam et al. 2007) is used to explain the center-to-limb variation in mean travel times observed by Duvall (2003), but this effect is not significant in travel-time differences for waves traveling in opposite directions and in small distances as used in this study. To check foreshortening effects, we mimicked the high-latitude data by reducing the spatial resolution of the data observed at lower latitudes, and our measurements did not show systematic changes in the measured travel times similar to the center-to-limb variations reported here.

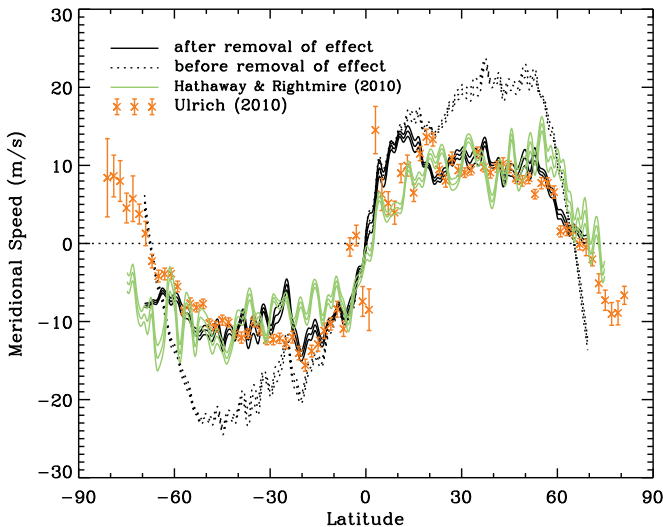


Figure 5. Comparison of the meridional flow speed obtained by magnetic feature tracking (Hathaway & Rightmire 2010), from surface Doppler measurements (Ulrich 2010), and obtained in this study for a depth of 0–1 Mm before and after the removal of the systematic effect. Our results are from a 10 day period, 2010 December 1–10, and are displayed after spatial averaging. The results from magnetic feature tracking and from Doppler measurement are averaged over a six-month period with our analyzed period in the middle.

(A color version of this figure is available in the online journal.)

It is more likely that this effect has a physical origin related to properties of solar acoustic waves in the solar atmosphere or the response of the spectral lines to the solar oscillations. It is well known that for a given spectral line the Sun is observed at the same optical depth but not at the same geometrical height. The observed height gradually increases with distance from the disk center. Thus, it is possible that the acoustic waves traveling in opposite directions and different height will give different measured travel times due to the subsurface location of the wave source and the waves' evanescent behavior above the photosphere (Nagashima et al. 2009). However, this cannot explain why different observables give different magnitude and trend of the center-to-limb variations. Another interesting fact is that the largest systematic effect exists in the measurements using the HMI continuum that forms at the lowest height in the atmosphere. As one moves up to the height where Doppler velocity is measured, the systematic effect is reduced. As the measurements move further up to where AIA 1600 Å is formed, the effect reverses sign. This may give us some indication of that this center-to-limb variation is related to the line formation height. It is also possible that this systematic effect is related to differences in the acoustic power distributions, line-asymmetry of solar modes (Duvall et al. 1993), and the correlated noise effect (Nigam et al. 1998). The cause of this systematic effect is worth further study, and may be resolved by numerical modeling of solar oscillations including the spectral line-formation simulation and spherical geometry of the Sun. It is worth attention that when inferring meridional flow velocity from surface Doppler measurements, a systematic center-to-limb velocity profile also needs to be removed (Ulrich et al. 1988; Ulrich 2010). A similar limb-shift effect very likely exists in the HMI Dopplergrams that are used in our time–distance measurements, and it is not clear whether this effect accounts for some of the systematic variations in our measured acoustic travel times. This is worth further study.

Although the cause of this systematic center-to-limb variation is not well understood, it is demonstrated that the empirical correction procedure can improve the inferred subsurface meridional flows. Figures 2–4 demonstrate that subtracting the longitude-dependent τ_{we} from the latitude-dependent τ_{ns} , measured from same observables, is an effective way to remove this systematic effect. This correction procedure helps to reconcile the τ_{ns} measured from different observables and also helps to remove the inconsistent behaviors of meridional flows in high-latitude areas. As an effect, the newly obtained subsurface meridional flows at shallow depths are approximately 10 m s^{-1} slower than the speed previously derived following a similar analysis procedure. This systematic center-to-limb variation in measured acoustic travel times has an important implication in the long-searched deep equatorward meridional flows and this is currently under investigation.

SDO is a NASA mission, and HMI project is supported by NASA contract NAS5-02139. We thank Roger Ulrich and David Hathaway for providing us their analysis results used to make Figure 5. We also thank an anonymous referee whose suggestions helped to improve the quality of this paper.

REFERENCES

- Braun, D. C., & Fan, Y. 1998, *ApJ*, 508, L105
 Chou, D.-Y., & Dai, D.-C. 2001, *ApJ*, 559, L175
 Couvidat, S., Zhao, J., Birch, A. C., et al. 2012, *Sol. Phys.*, 275, 357
 Dikpati, M., de Toma, G., & Gilman, P. A. 2006, *Geophys. Res. Lett.*, 33, L05102
 Dikpati, M., Gilman, P. A., de Toma, G., & Ulrich, R. K. 2010, *Geophys. Res. Lett.*, 37, L14107
 Duvall, T. L., Jr. 2003, in Proc. SOHO 12/GONG+ 2002, Local and Global Helioseismology: The Present and Future, ed. H. Sawaya-Lacoste (ESA SP-517; Noordwijk, Netherlands: ESA Publications Division), 259
 Duvall, T. L., Jr., Jefferies, S. M., Harvey, J. W., Osaki, Y., & Pomerantz, M. A. 1993, *ApJ*, 410, 829
 Giles, P. M., Duvall, T. L., Jr., Scherrer, P. H., & Bogart, R. S. 1997, *Nature*, 390, 52
 Gizon, L. 2004, *Sol. Phys.*, 224, 217
 González Hernández, I., Kholikov, S., Hill, F., Howe, R., & Komm, R. 2008, *Sol. Phys.*, 252, 235
 Haber, D. A., Hindman, B. W., Toomre, J., et al. 2002, *ApJ*, 570, 855
 Hathaway, D. H., Gilman, P. A., Harvey, J. W., et al. 1996, *Science*, 272, 1306
 Hathaway, D. H., & Rightmire, L. 2010, *Science*, 327, 1350
 Hathaway, D. H., Williams, P. E., Dela Rosa, K., & Cuntz, M. 2010, *ApJ*, 725, 1082
 Hindman, B. W., Gizon, L., Duvall, T. L., Jr., Haber, D. A., & Toomre, J. 2004, *ApJ*, 613, 1253
 Howe, R., Hill, F., Komm, R., et al. 2011, *J. of Phys. Conf. Ser.*, 271, 012058
 Komm, R. W., Howard, R. F., & Harvey, J. W. 1993, *Sol. Phys.*, 147, 207
 Kosovichev, A. G., & Duvall, T. L., Jr. 1997, in Proc. SCORE'96 Workshop: Solar Convection and Oscillations and Their Relationship, ed. F. P. Pijpers, J. Christensen-Dalsgaard, & C. S. Rosenthal (Dordrecht: Kluwer), 241
 Krieger, L., Roth, M., & von der Lühse, O. 2007, *Astron. Nachr.*, 328, 252
 Lemen, J. R., Title, A. M., Akin, D. J., et al. 2012, *Sol. Phys.*, 275, 17
 Nagashima, K., Sekii, T., Kosovichev, A. G., Zhao, J., & Tarbell, T. D. 2009, *ApJ*, 694, L115
 Nigam, R., Kosovichev, A. G., & Scherrer, P. H. 2007, *ApJ*, 659, 1736
 Nigam, R., Kosovichev, A. G., Scherrer, P. H., & Schou, J. 1998, *ApJ*, 495, L115
 Pesnell, W. D., Thompson, B. J., & Chamberlin, P. C. 2012, *Sol. Phys.*, 275, 3
 Roth, M., & Stix, M. 2008, *Sol. Phys.*, 251, 77
 Scherrer, P. H., Schou, J., Bush, R. I., et al. 2012, *Sol. Phys.*, 275, 207
 Schou, J., Scherrer, P. H., Bush, R. I., et al. 2012, *Sol. Phys.*, 275, 229
 Švanda, M., Klvaňa, M., & Sobotka, M. 2006, *A&A*, 458, 301
 Ulrich, R. K. 2010, *ApJ*, 725, 658
 Ulrich, R. K., Boyden, J. E., Webster, L., Padilla, S. P., & Snodgrass, H. B. 1988, *Sol. Phys.*, 117, 291
 Zhao, J., Couvidat, S., Bogart, R. S., et al. 2012, *Sol. Phys.*, 275, 375
 Zhao, J., & Kosovichev, A. G. 2004, *ApJ*, 603, 776