

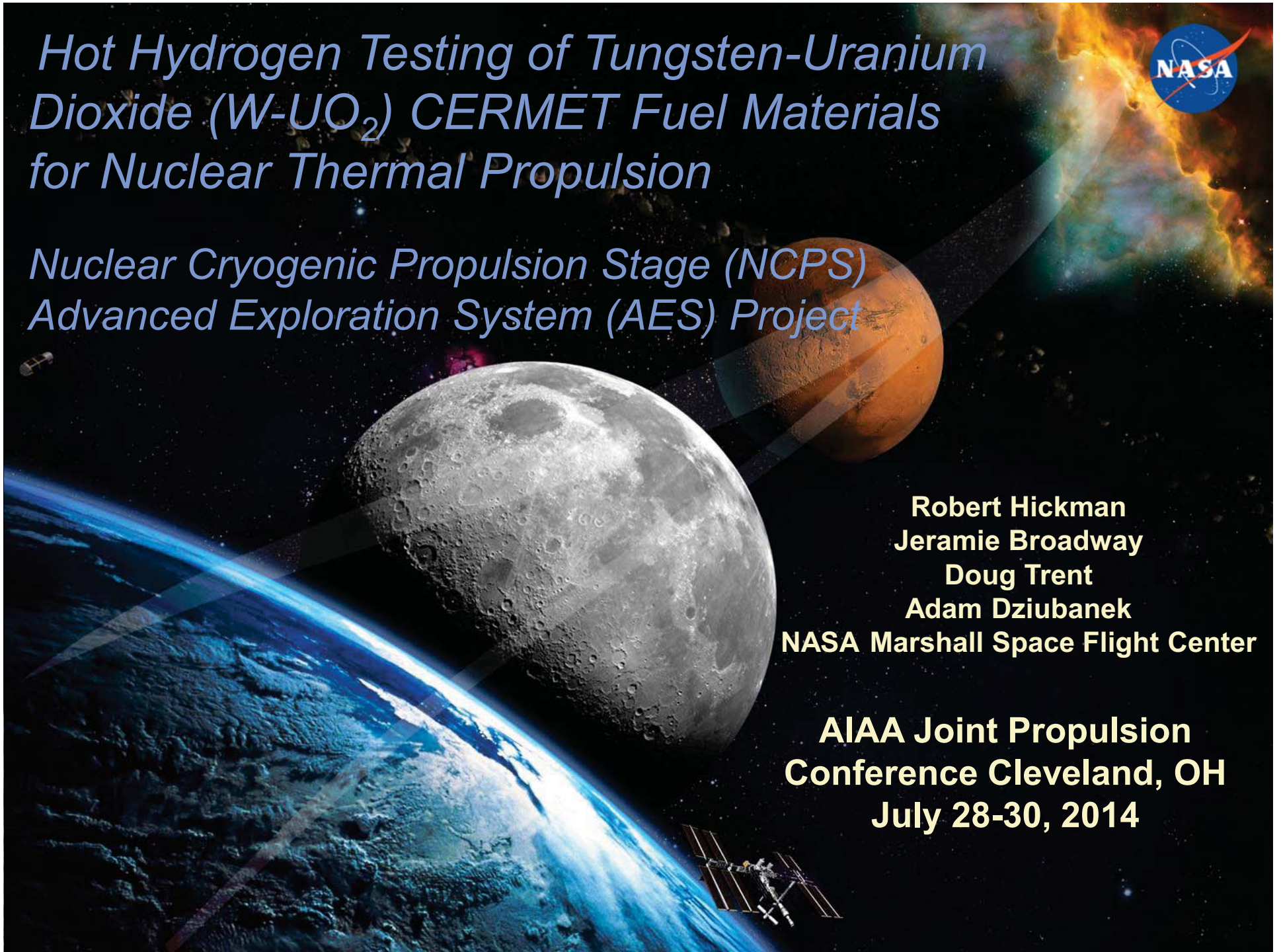
*Hot Hydrogen Testing of Tungsten-Uranium  
Dioxide (W-UO<sub>2</sub>) CERMET Fuel Materials  
for Nuclear Thermal Propulsion*

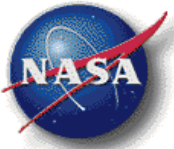
*Nuclear Cryogenic Propulsion Stage (NCPS)  
Advanced Exploration System (AES) Project*



**Robert Hickman  
Jeramie Broadway  
Doug Trent  
Adam Dziubanek  
NASA Marshall Space Flight Center**

**AIAA Joint Propulsion  
Conference Cleveland, OH  
July 28-30, 2014**





## Outline

---

- NCPS Overview
- Heritage CERMET Development
- Non-Nuclear Fuels Testing
- Compact Fuel Element Environmental Test (CFEET)
  - System development
  - Current configuration and validation
- Hot Hydrogen Testing of W-UO<sub>2</sub>
- Non-Uniform RF Heating Profile
- Forward Plan and Summary





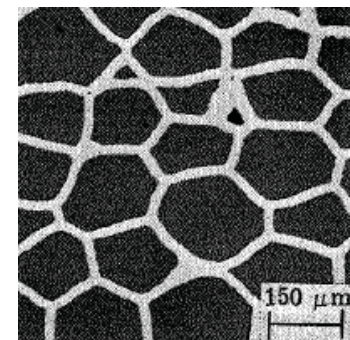


# Heritage CERMET Fuel Development

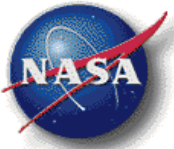
- CERMET fuels consist of a metal matrix with embedded ceramic fuel particles
  - W matrix (high melting point, H<sub>2</sub> compatibility)
  - UO<sub>2</sub>, UN, (U,Zr)CN fuel particles
- Current work is based on GE710, ANL, and NASA LeRC development Programs
  - Must recapture capabilities and processes
- Data is not sufficient to support selection of a baseline fabrication technique
  - Large variation in materials, processes, and testing
- Significant progress made to characterize fuel
  - Fuel loss and failure mechanisms are known
  - Materials and process options to improve fuel performance are known



W-UO<sub>2</sub> CERMET Samples fabricated during ANL Program

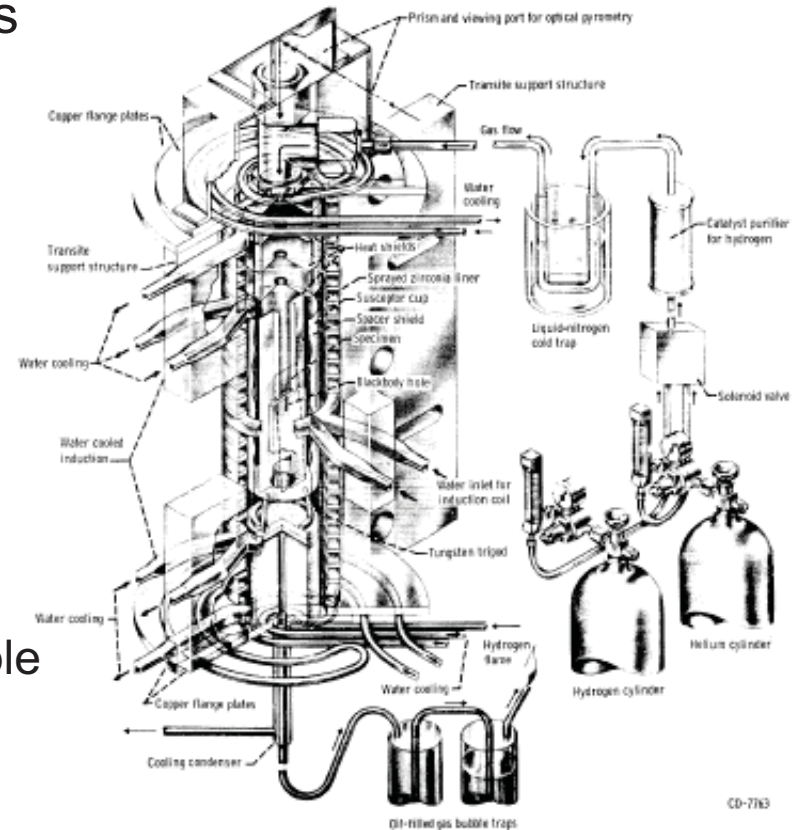


W - light phase, UO<sub>2</sub> - dark phase



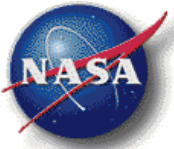
# Non-Nuclear Hot H<sub>2</sub> Screening and Evaluation

- Need affordable approach to evaluate fuels
  - Fuel loss and stability
  - Validate M&P and designs
  - Perform prior to expensive nuclear testing
- Hydrogen testing used extensively on previous programs
- NASA-LeRC induction furnace
  - 2760 C specimen temperatures
- ANL H<sub>2</sub> test loops (small & large)
  - Resistively heated H<sub>2</sub> flowing through sample
  - Up to 2450 C
- Rover/NERVA test facilities
  - Full Length H<sub>2</sub> test systems at LANL & WANL
  - Resistively heated (1MW) elements



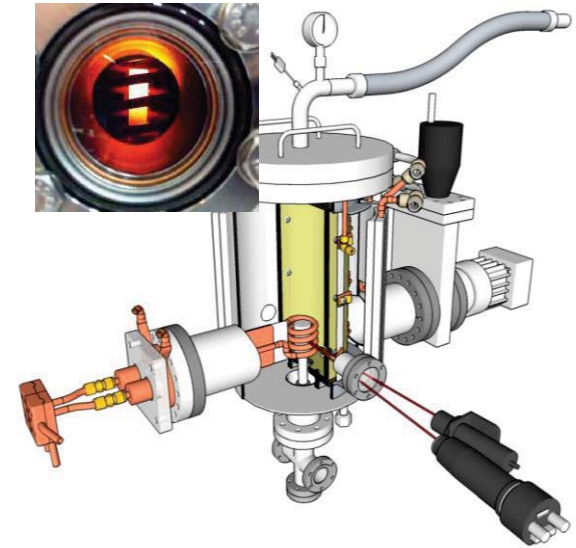
NASA-LeRC Induction Furnace

*Previous capabilities no longer exist and very limited info on systems*

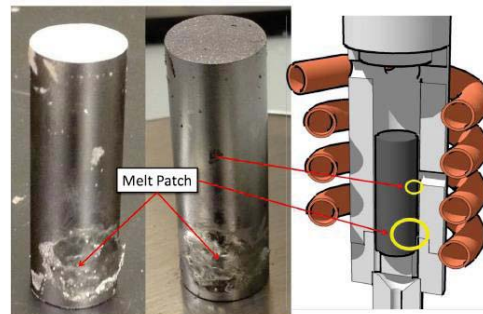


# Compact Fuel Element Environment Test (CFEET)

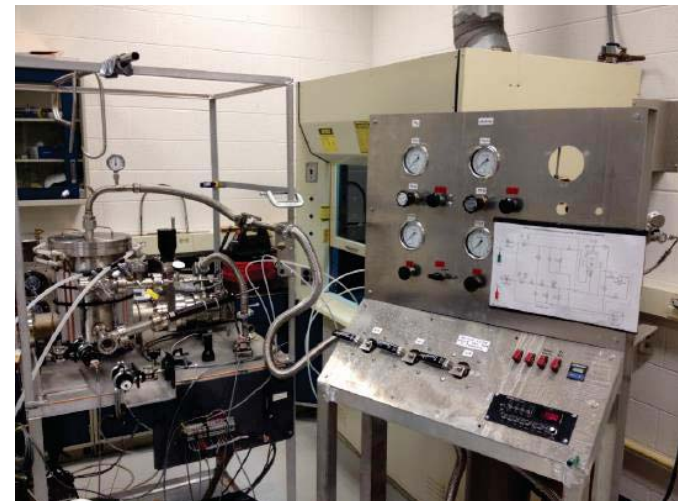
- Affordable, rapid screening of subscale samples
- Utilizes RF induction heating
- Numerous system modifications
  - Power supply, cooling water, RF coil, data acquisition, H<sub>2</sub> feed, and sample support
- Initial testing with 15kW RF power supply
  - Operational tests using W and W-Re-HfN CERMET
  - 2565 C in vacuum, 2042 C in flowing H<sub>2</sub>
  - Temps limited by power supply
- System re-design and upgrade to 50 kW



Pre/Post test W-Re-HfN  
CERMET samples



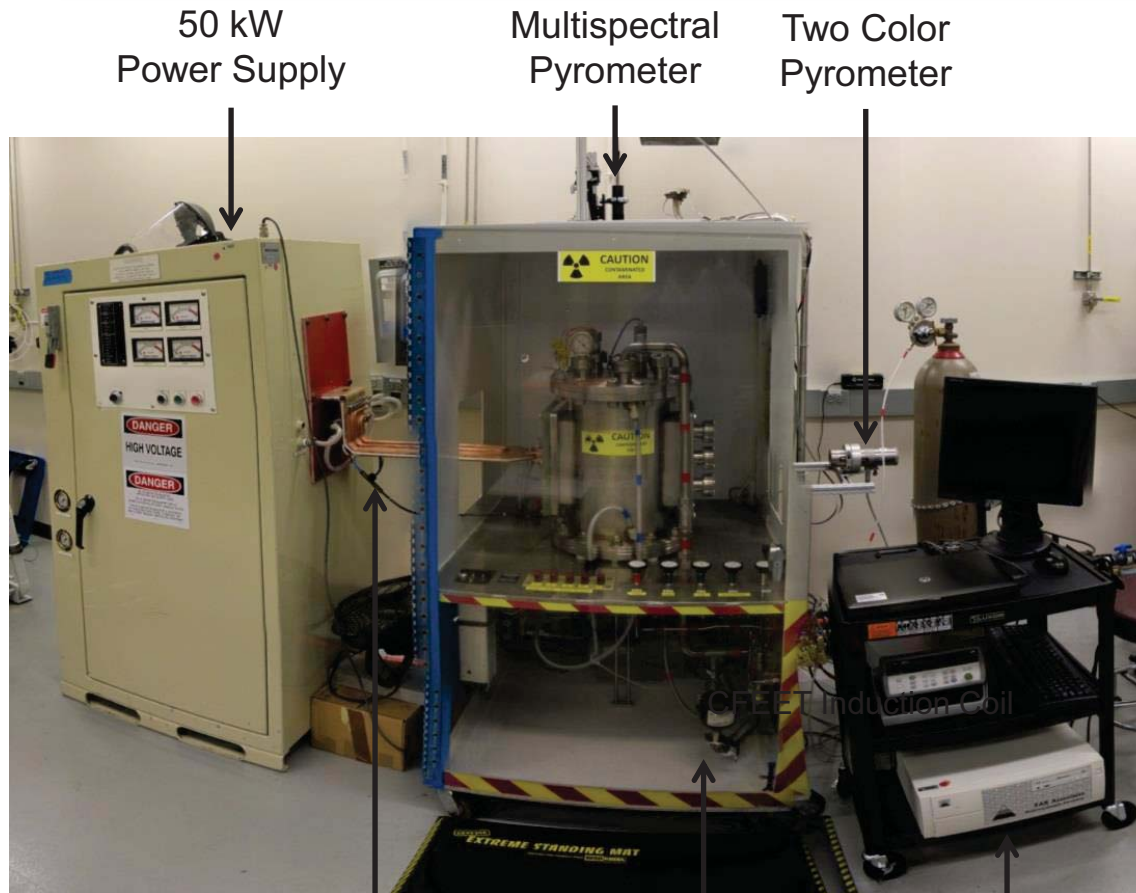
Pure W samples







# Current CFEET Configuration



50 kW  
Power Supply

Multispectral  
Pyrometer

Two Color  
Pyrometer

Rogowski Coil

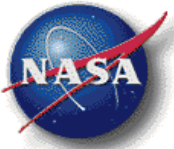
CFEET Cart

Data  
Acquisition  
Cart

- Fully operational with DU
- 16.5 SLPM H<sub>2</sub> Flow Rate
- >2500 C, 2 hour run times

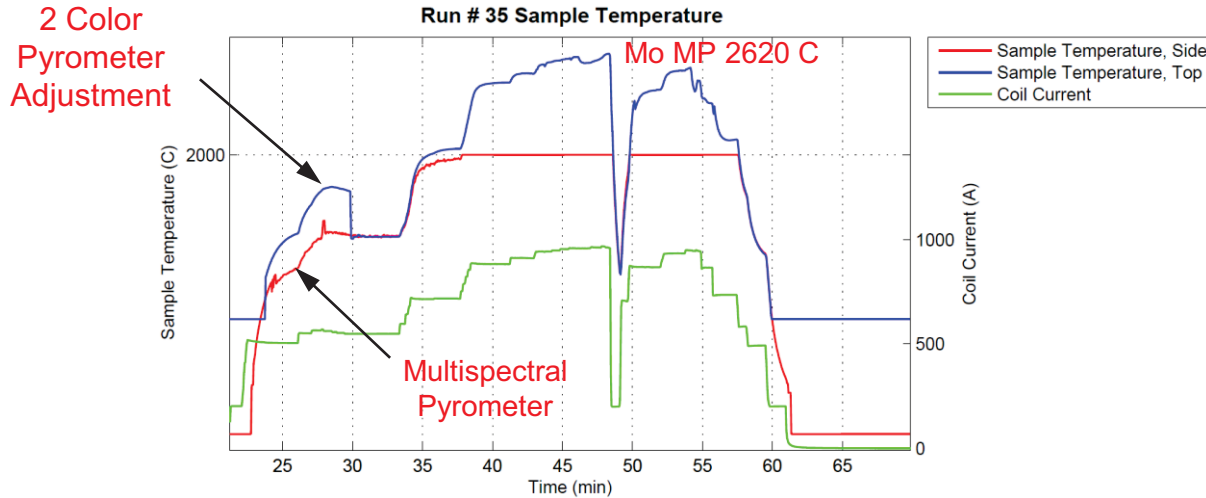


CFEET Chamber and RF Induction Coil

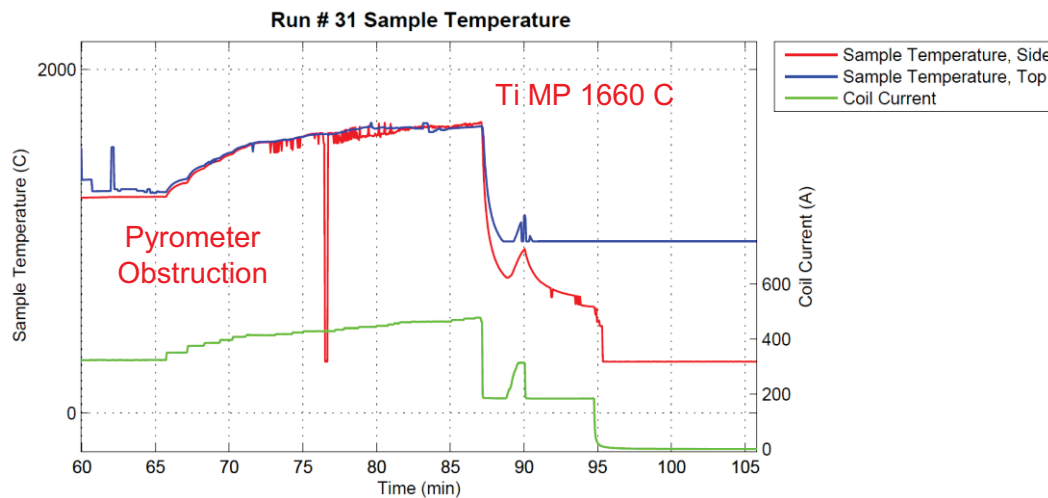


# CFEET Temperature Validation

- Multispectral pyrometer up to 2000 C, 2 color up to 3000 C
  - 2 color pyrometer adjustment to multispectral at 1500 C



Molybdenum Sample Post Test (1" length)

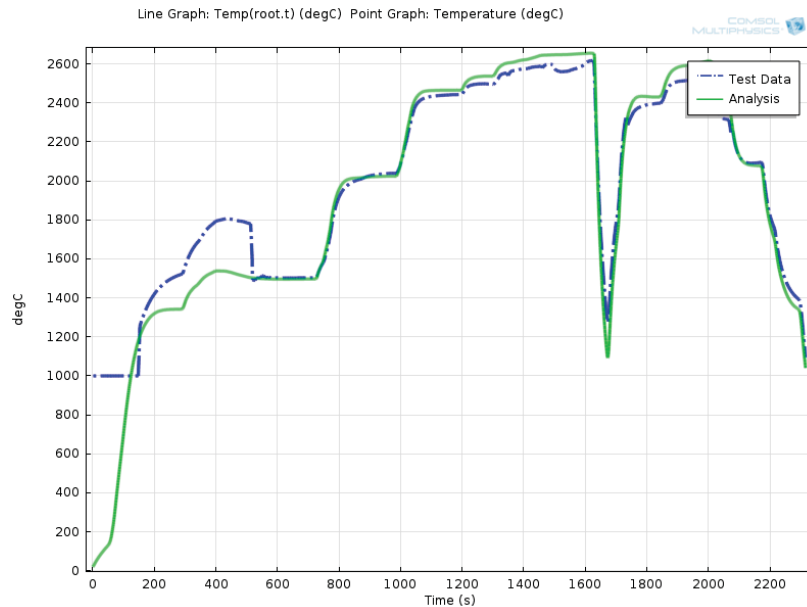


Titanium Sample Post Test (1" length)

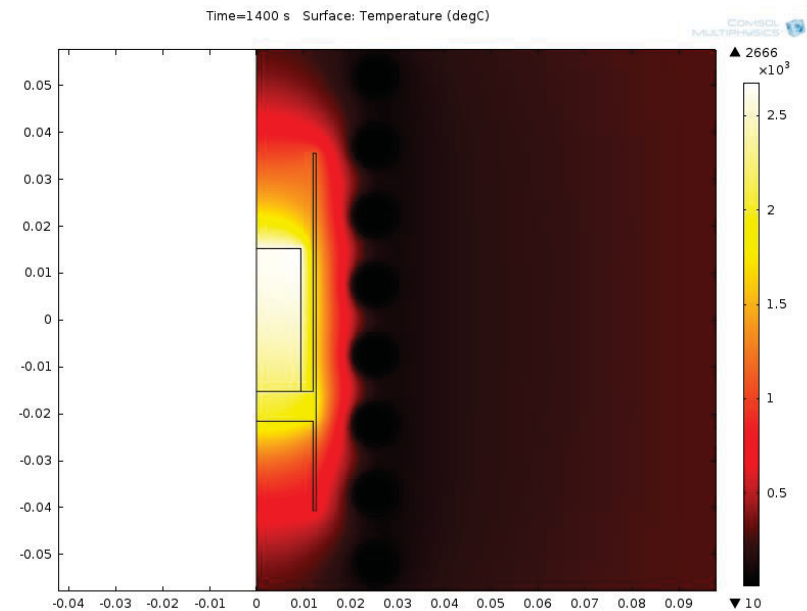




# CFEET Model Validation

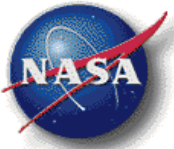


Molybdenum melt test calibration cycle and model temperature data



Multiphysics model showing surface temperature for a Mo sample in CFEET

- Multiphysics model uses CFEET RF current data to estimate magnetic flux density and sample temperatures
  - Includes fully coupled flowing H<sub>2</sub> and material properties



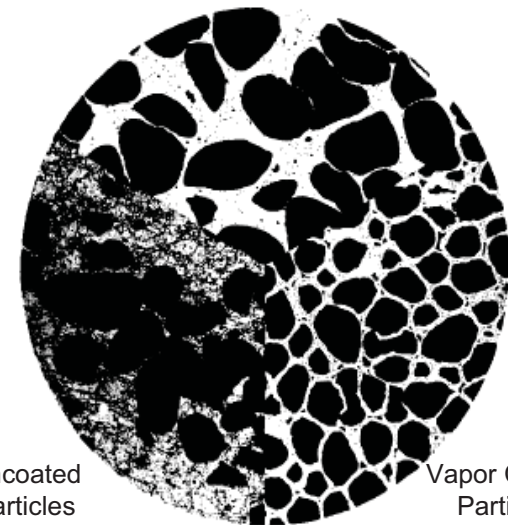
# W-UO<sub>2</sub> Sample Testing in CFEET

- Initial W-UO<sub>2</sub> samples are not optimized
  - UO<sub>2</sub> agglomeration
  - No interconnected W matrix
  - Low density (interconnected porosity)
  - No protective W claddings
  - No UO<sub>2</sub> stabilizers
- Testing mainly to understand CFEET system
  - RF coupling and temperature control
- Evaluate UO<sub>2</sub> vaporization
- **Samples can only get better with further materials and process development!**



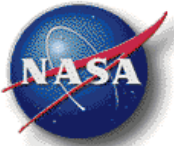
UO<sub>2</sub> agglomeration in current samples. Dark regions are UO<sub>2</sub>, light regions are W.

Powder Coated  
Particles

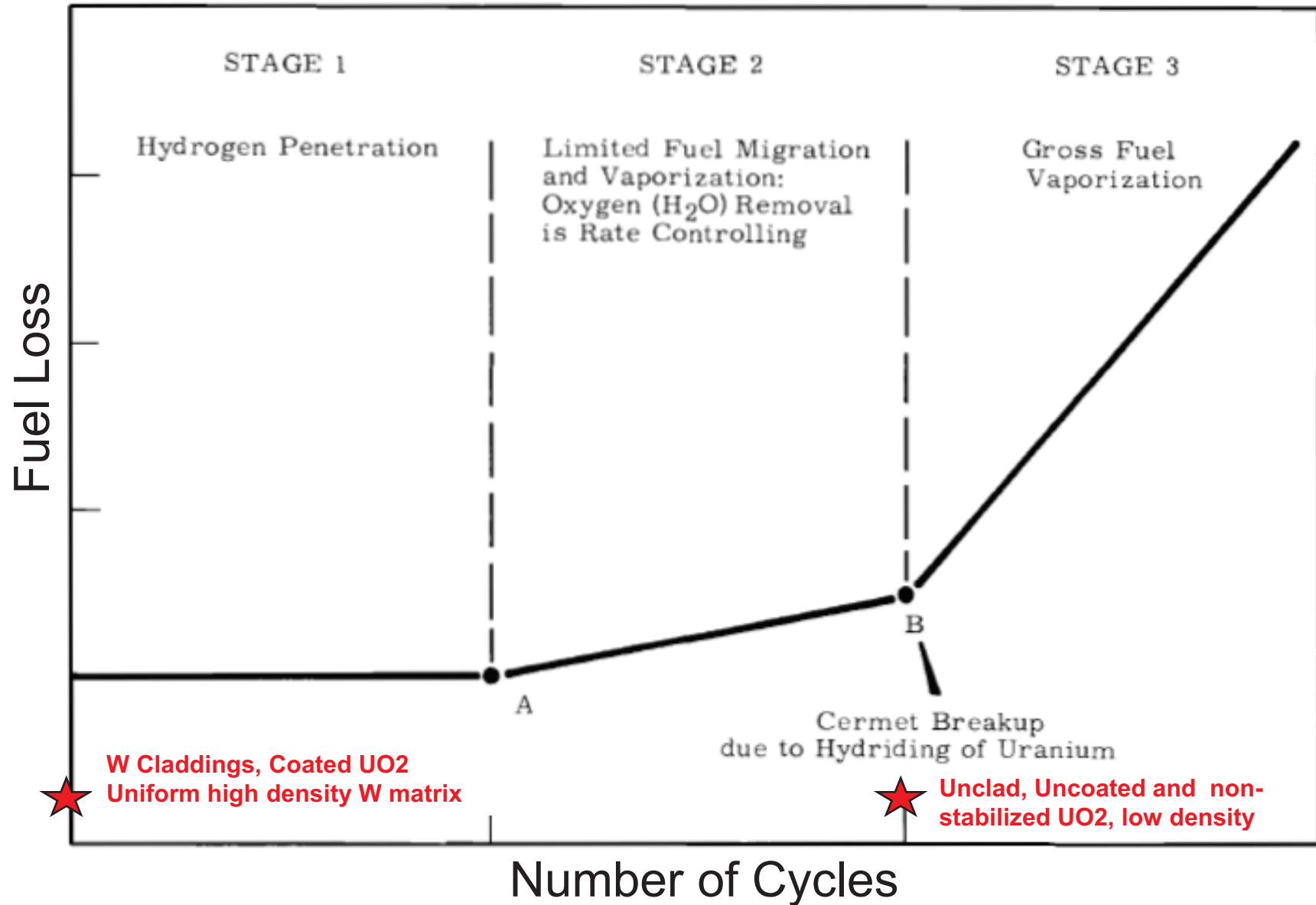


Uncoated  
Particles

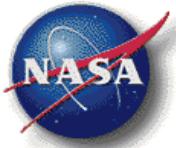
Vapor Coated  
Particles



# Stages of W-UO<sub>2</sub> Decomposition

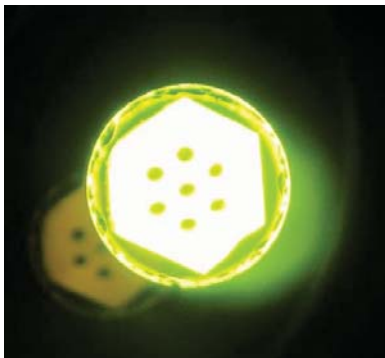






# Initial W-UO<sub>2</sub> Sample Testing in CFEET

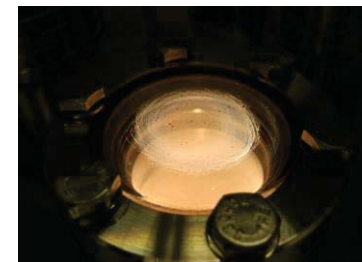
- 7-Hole W-UO<sub>2</sub> sample cycled for 30 minutes at 1650 C in flowing H<sub>2</sub> to remove surface oxides and contamination
  - 10% of 50 KW power supply, No visible change in sample
- 2<sup>nd</sup> cycle of 7-hole sample with slow ramping up to 2500 C
  - Cycle terminated after 30 sec at ~2400 C due to rapid UO<sub>2</sub> vaporization (pyrometer sight glass completely covered with U deposits)
  - Cracking, particle deposition on the hot end and 1.5% weight loss
- W-UO<sub>2</sub> slug sample cycled for 10 minutes at 2500 C
  - Sample reduced to powder after cooling



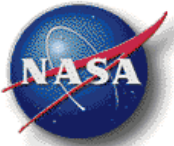
7-hole W-UO<sub>2</sub> in CFEET and post testing up to 2400 C



W-UO<sub>2</sub> slug after 10 min in CFEET at 2500C

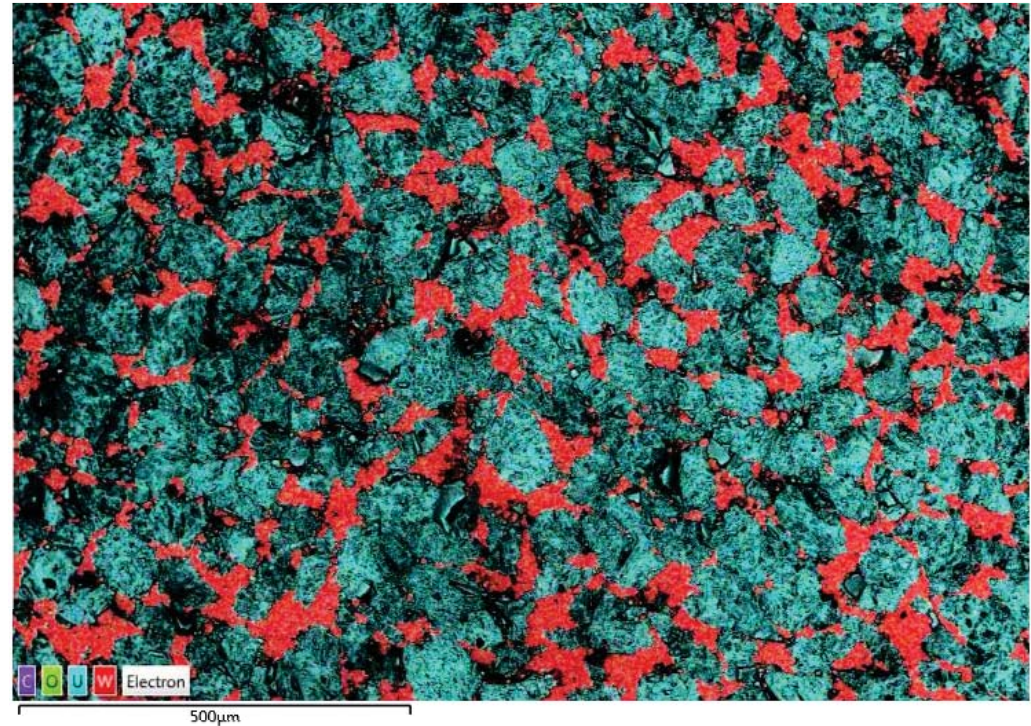
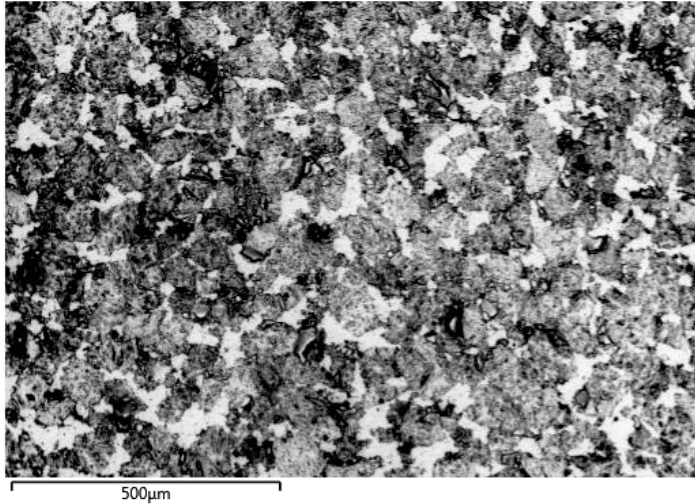


Build up on CFEET Sight Glass

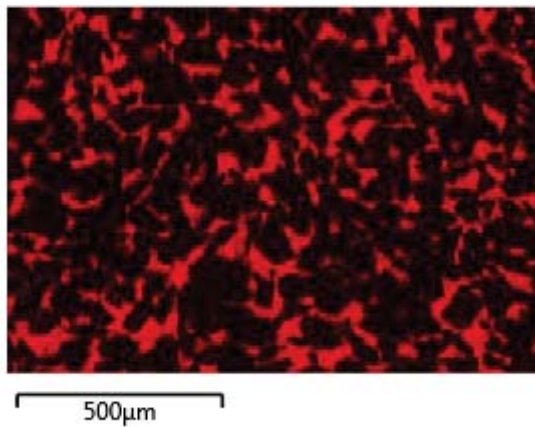


# W-UO<sub>2</sub> Phase Map Pre CFEET Test

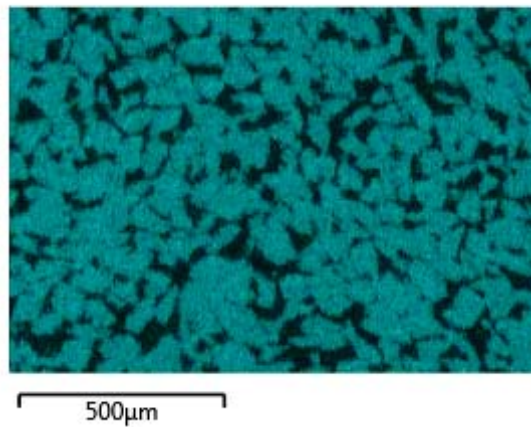
Electron Image 7



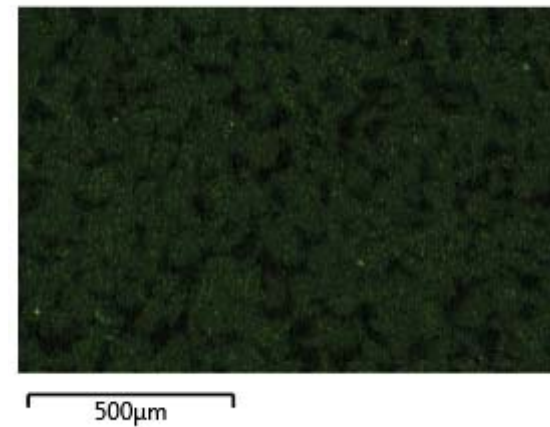
W M series



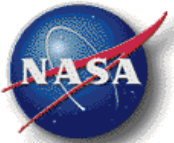
U M series



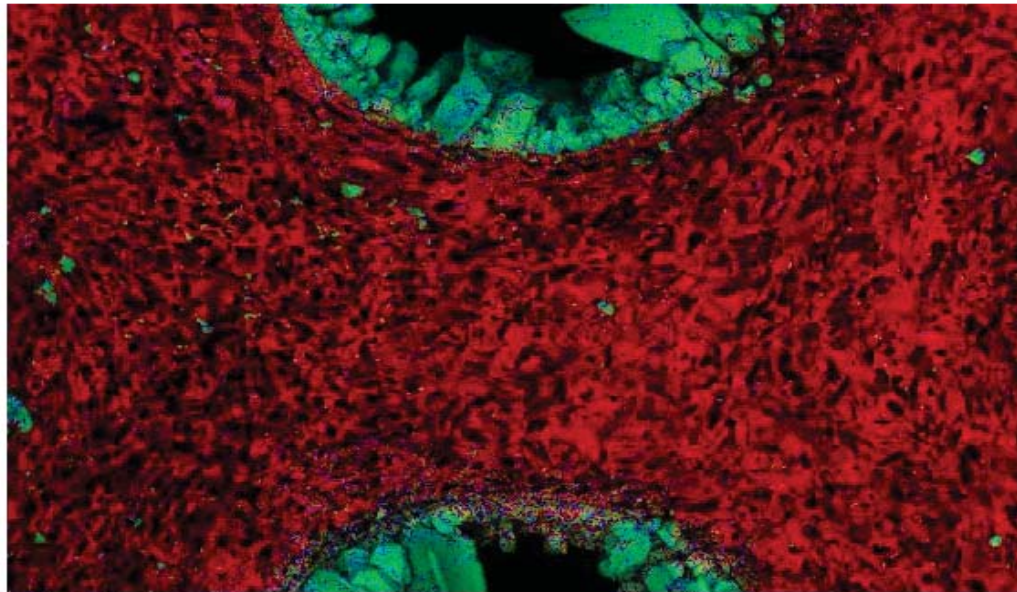
O K series



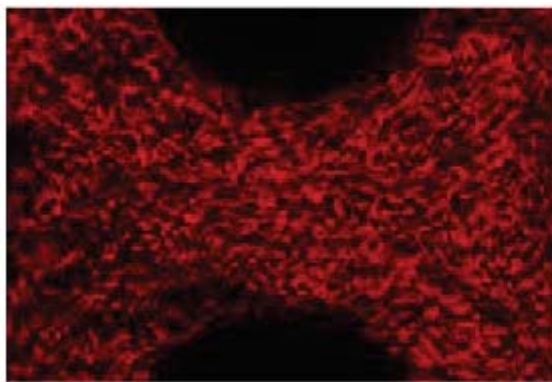




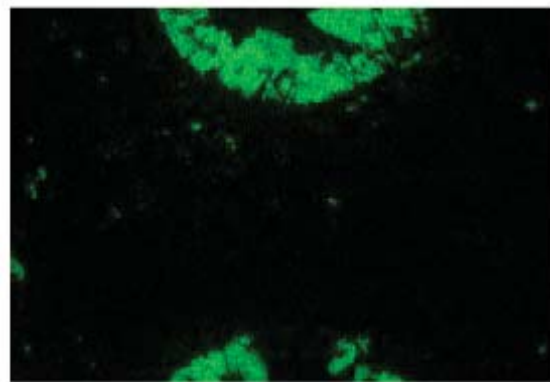
# W-UO<sub>2</sub> Phase Map Post CFEET Testing



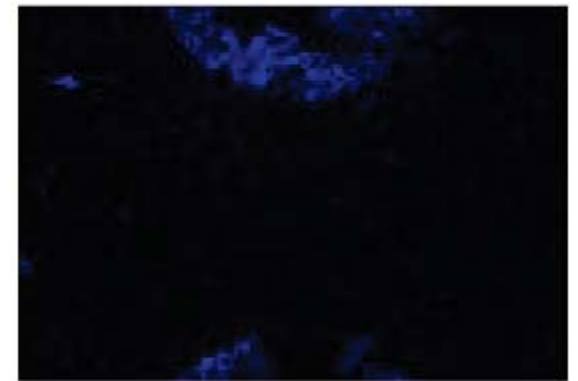
W M series



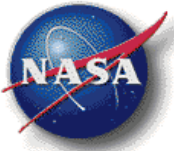
U M series



O K series

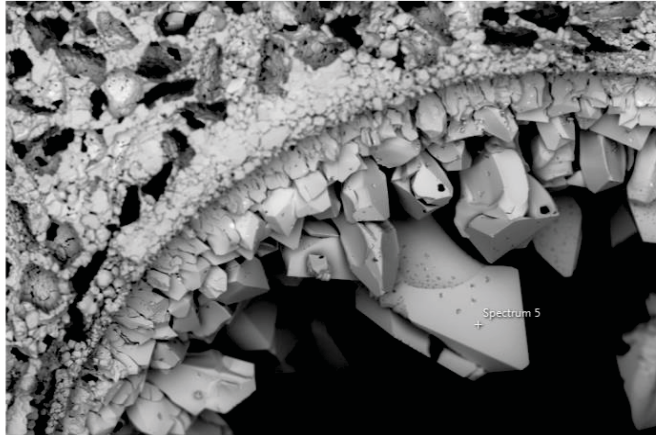




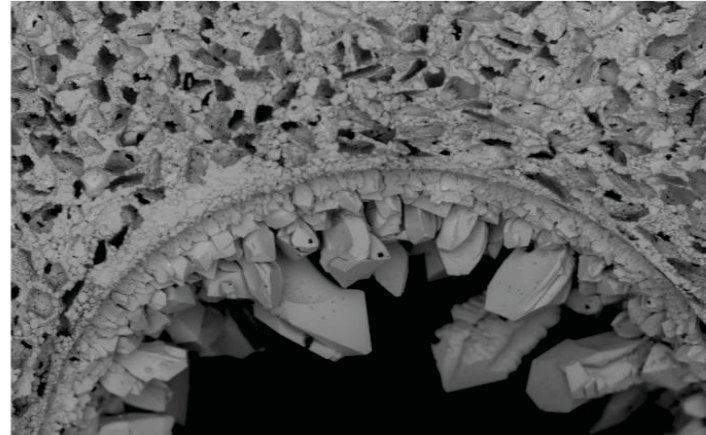


# WUO<sub>2</sub> Post CFEET Test

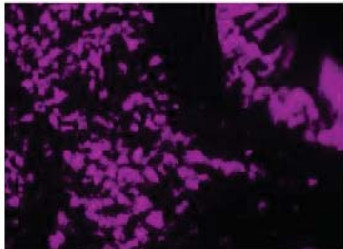
Electron Image 8



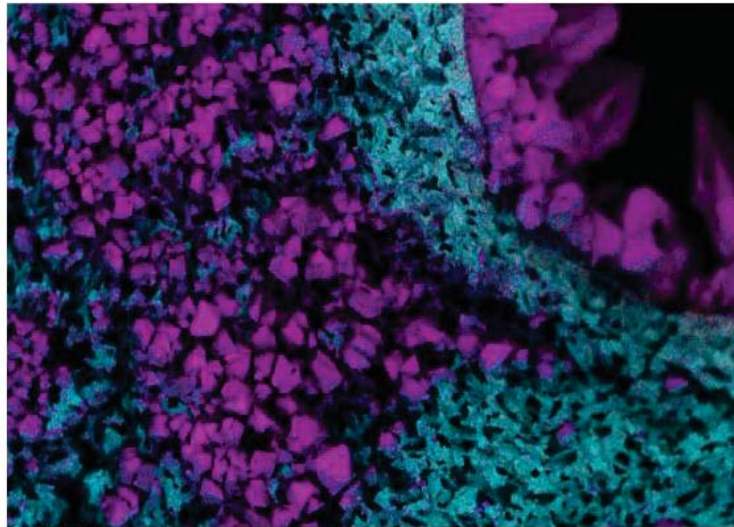
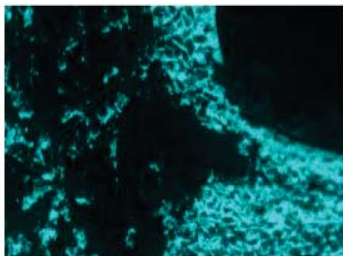
Electron Image 9



U M series



W M series

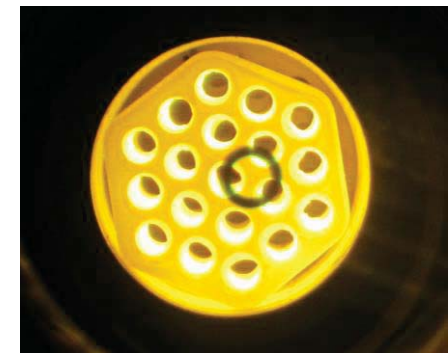


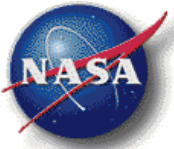
W-UO<sub>2</sub> sample post test



# CSNR/Aerojet Rocketdyne W-UO<sub>2</sub> Testing

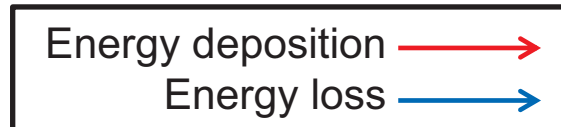
- W-UO<sub>2</sub> samples fabricated at the Center for Space Nuclear Research in Idaho Falls, ID
  - Spark Plasma Sintering (SPS) techniques
- NERVA heritage 19-hole configuration
- Similar to GE710 fuel fabrication approach
  - Multiple bonded segments
  - Improved sintering with SPS
  - Net shape fabrication (reduced machining)
- 3" sample cycled in CFEET in flowing H<sub>2</sub> to ~2200 C
- Testing terminated due to observed non-uniform heating profile and temperature readings
- Testing of SPS samples will proceed after optimization and verification of CFEET system





# Current CFET Thermodynamic Heating Profile

- Sample location in coil is critical for uniform heating (radial and axial position)
  - 3" long sample located with top edge near top of RF induction coil (6" long)
  - Flowing H<sub>2</sub> atmosphere at 16.5 SLPM
- Increased local current (heating) at surface due to melting (gouging effect)



## Thermodynamics

### Heat Deposition

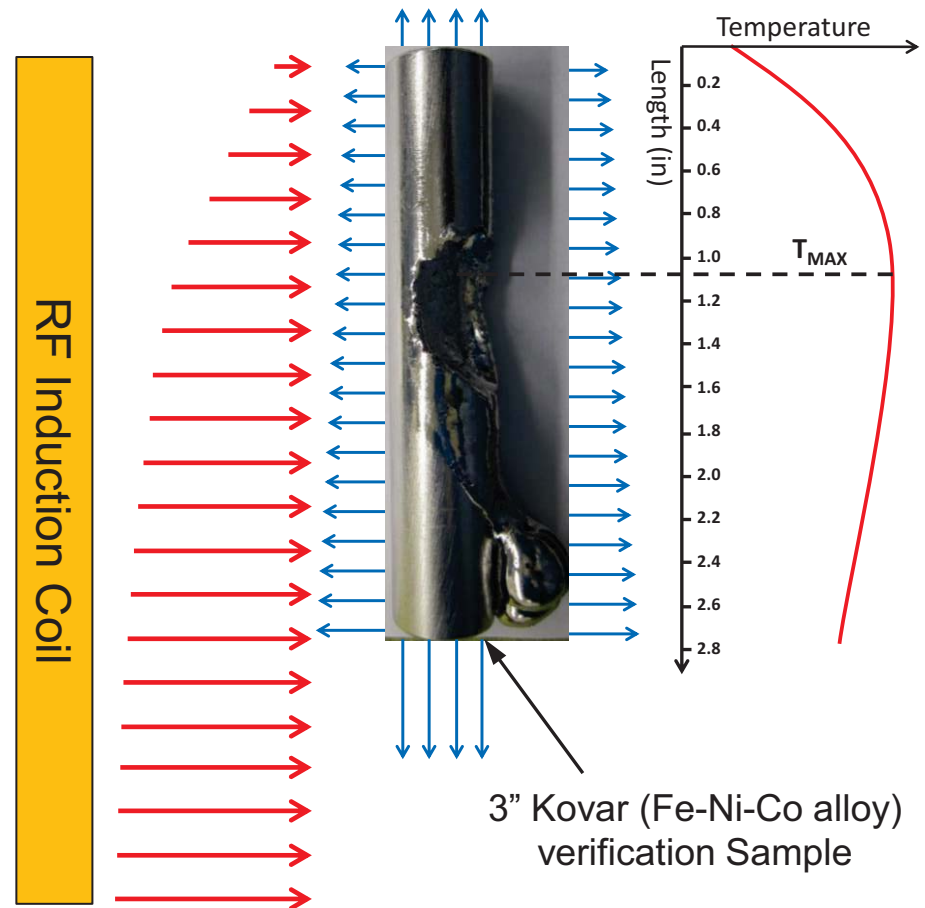
- Non-linear power density
- Lowest at coil edge
- highest at coil center

### Sides and Top

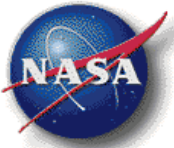
- Radiation
- Convection

### Bottom

- Radiation
- Convection
- Conduction (BN pedestal)

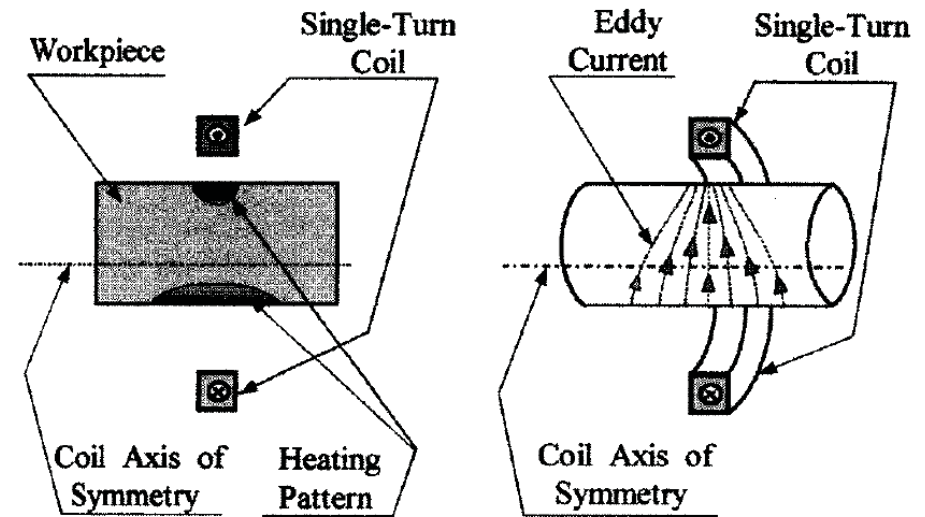




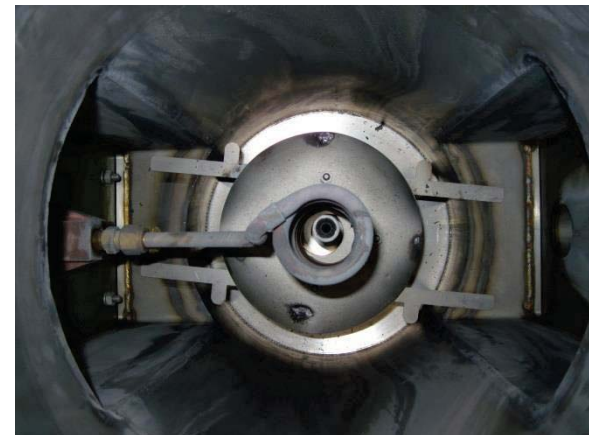


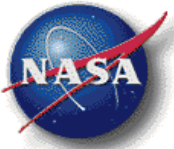
# Non-symmetrical RF Heating Effects

- **Non-uniform heating due to off-axis alignment of coil and sample**
- Eddy currents produce heating of sample through the Joule effect
- Smaller gap between coil and sample results in better coupling
  - Intense, localized heating
- Larger gap between coil and sample results in poor coupling
  - Less intense, more diffuse heating



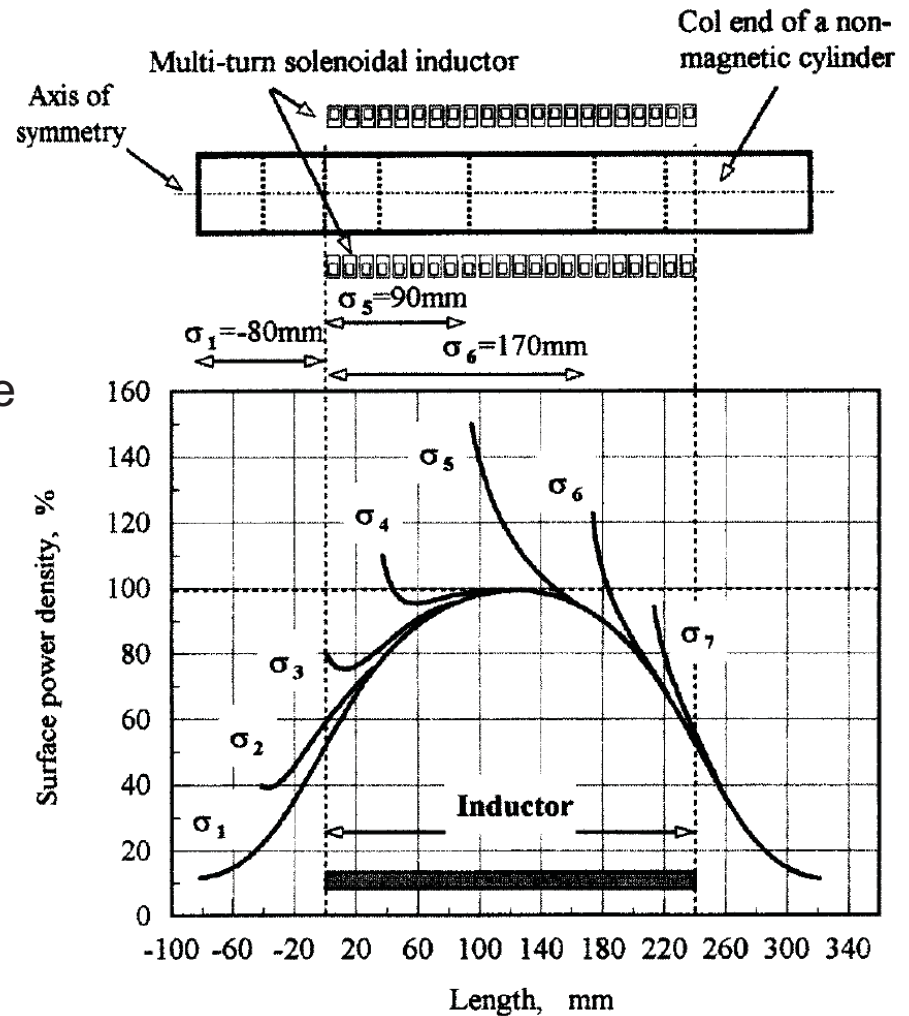
Proximity effect in non-symmetrical single-turn inductor



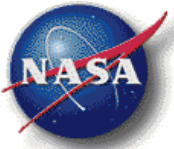


# Electromagnetic End Effects

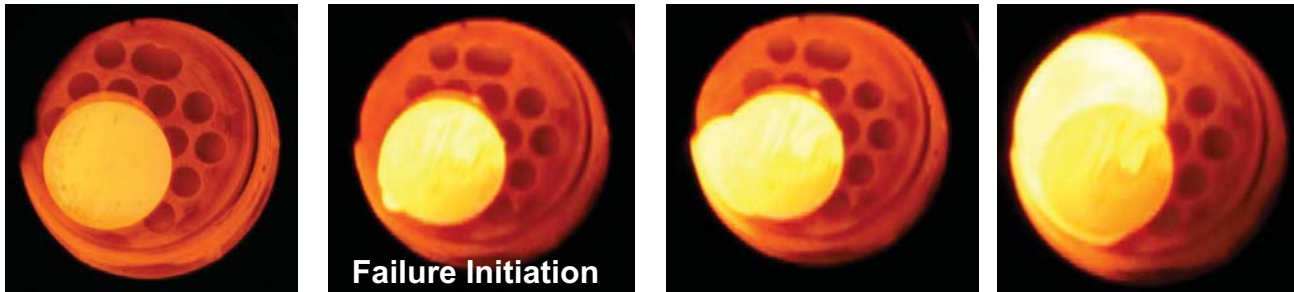
- Coil overhang can affect power density on the sample
- Sample outside of coil
  - Predictable power density curves ( $\sigma_1$ )
- Sample inside of coil
  - Less predictable power densities at the extremes, as seen by  $\sigma_3 - \sigma_7$
- Can get under heating or overheating at the extreme ends of the sample
  - Dependent on axial location
- Need to optimize sample location
  - May constrain sample size for current coil configuration (~1.5")



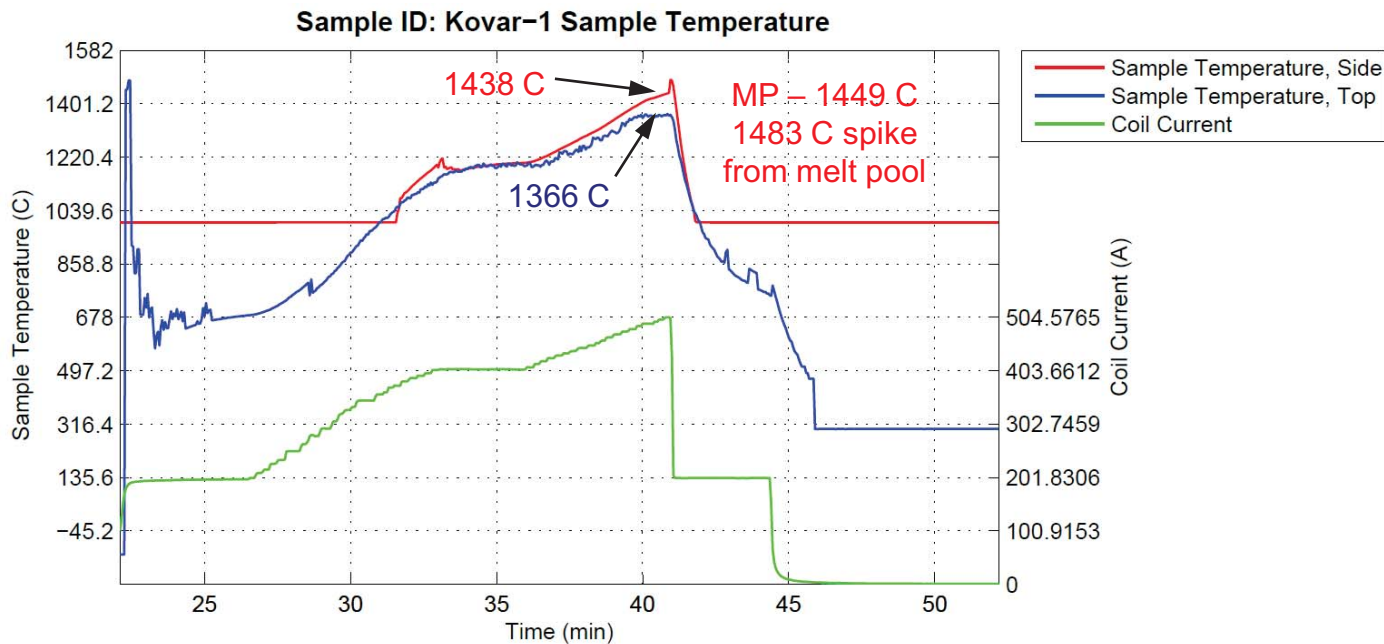
Electromagnetic end effects at different coil overhangs



# Non-Uniform Heating Profile Verification



- Kovar sample during induction heating, flowing H<sub>2</sub>
- 3" sample located with top edge near top of coil

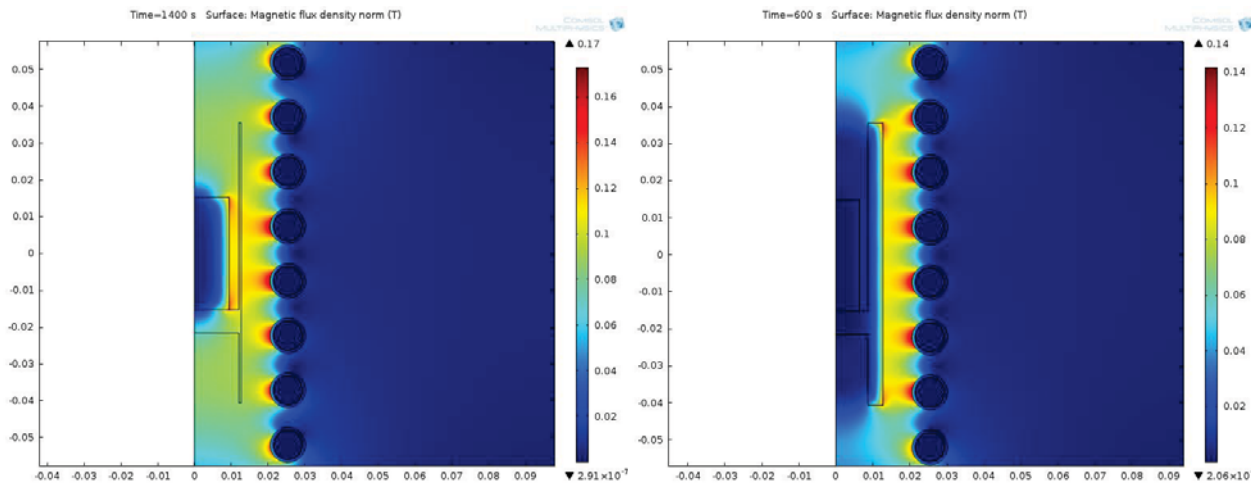
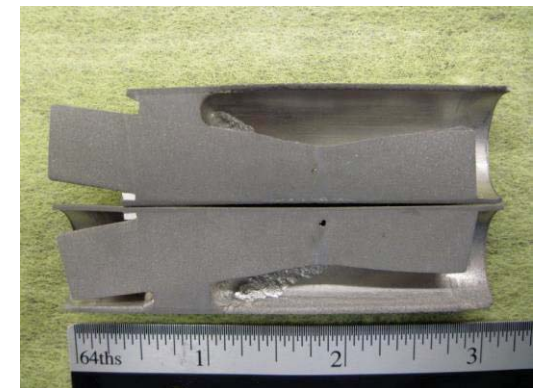
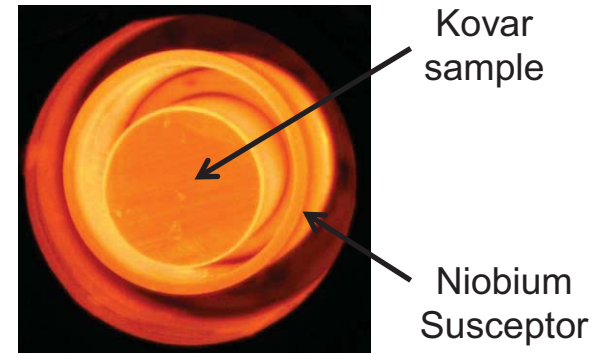






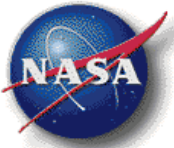
# Improve RF Heating Profile with W Susceptor

- Susceptors are used to absorb electromagnetic energy and convert it to radiant heat
- Shield the sample from RF heating
  - Eliminates preferential heating from surface edges, defects, and other anomalies such as joints
  - More uniform heat deposition on sample
- Susceptor evaluation trials in CFEET
  - More uniform heating
  - Eliminated focused current/joule heating failures



Magnetic flux density on a BN insulator

Magnetic flux density on a W susceptor



## Forward Plan and Summary

---

- Optimize heating profile using a W susceptor and sample size/location
- Upgrade to 3000 C multispectral pyrometers on top and middle
- Complete fabrication and testing of improved subscale W-UO<sub>2</sub> samples
  - W CVD coated UO<sub>2</sub>
  - W powder coated UO<sub>2</sub> (binders)
  - With and without integral W claddings
  - SPS and HIP fabricated samples
- CERMETS demonstrated, but not proven to full scale
  - Large variation in materials, processing, and performance
- MSFC has developed subscale hot hydrogen testing capability
  - Rapid, affordable screening
  - Verification of materials and processing prior to expensive nuclear testing
- Development enables fuel optimization for future ground testing and flight technology demonstration