

## NASA/TM–2014-104606/Vol. 33



### Technical Report Series on Global Modeling and Data Assimilation, Volume 33

*Randal D. Koster, Editor*

## The Effects of Chlorophyll Assimilation on Carbon Fluxes in a Global Biogeochemical Model

*Cécile S. Rousseaux and Watson W. Gregg*

National Aeronautics and  
Space Administration

Goddard Space Flight Center  
Greenbelt, Maryland 20771

**August 2014**

## NASA STI Program ... in Profile

Since its founding, NASA has been dedicated to the advancement of aeronautics and space science. The NASA scientific and technical information (STI) program plays a key part in helping NASA maintain this important role.

The NASA STI program operates under the auspices of the Agency Chief Information Officer. It collects, organizes, provides for archiving, and disseminates NASA's STI. The NASA STI program provides access to the NASA Aeronautics and Space Database and its public interface, the NASA Technical Report Server, thus providing one of the largest collections of aeronautical and space science STI in the world. Results are published in both non-NASA channels and by NASA in the NASA STI Report Series, which includes the following report types:

- **TECHNICAL PUBLICATION.** Reports of completed research or a major significant phase of research that present the results of NASA Programs and include extensive data or theoretical analysis. Includes compilations of significant scientific and technical data and information deemed to be of continuing reference value. NASA counterpart of peer-reviewed formal professional papers but has less stringent limitations on manuscript length and extent of graphic presentations.
- **TECHNICAL MEMORANDUM.** Scientific and technical findings that are preliminary or of specialized interest, e.g., quick release reports, working papers, and bibliographies that contain minimal annotation. Does not contain extensive analysis.
- **CONTRACTOR REPORT.** Scientific and technical findings by NASA-sponsored contractors and grantees.
- **CONFERENCE PUBLICATION.** Collected papers from scientific and technical conferences, symposia, seminars, or other meetings sponsored or co-sponsored by NASA.
- **SPECIAL PUBLICATION.** Scientific, technical, or historical information from NASA programs, projects, and missions, often concerned with subjects having substantial public interest.
- **TECHNICAL TRANSLATION.** English-language translations of foreign scientific and technical material pertinent to NASA's mission.

Specialized services also include organizing and publishing research results, distributing specialized research announcements and feeds, providing help desk and personal search support, and enabling data exchange services. For more information about the NASA STI program, see the following:

- Access the NASA STI program home page at <http://www.sti.nasa.gov>
  - E-mail your question via the Internet to [help@sti.nasa.gov](mailto:help@sti.nasa.gov)
  - Fax your question to the NASA STI Help Desk at 443-757-5803
  - Phone the NASA STI Help Desk at 443-757-5802
  - Write to:  
NASA STI Help Desk  
NASA Center for AeroSpace Information  
7115 Standard Drive  
Hanover, MD 21076-1320
-



**Technical Report Series on Global Modeling and Data Assimilation,  
Volume 33**

*Randal D. Koster, Editor*

**The Effects of Chlorophyll Assimilation on Carbon Fluxes in a  
Global Biogeochemical Model**

*Cécile S. Rousseaux*

*Universities Space Research Association (GESTAR), Greenbelt, Maryland*

*Watson W. Gregg*

*NASA's Goddard Space Flight Center, Greenbelt, Maryland*

National Aeronautics and  
Space Administration

**Goddard Space Flight Center  
Greenbelt, Maryland 20771**

### **Notice for Copyrighted Information**

This manuscript has been authored by employees of the *Universities Space Research Association* with the National Aeronautics and Space Administration. The United States Government has a non-exclusive, irrevocable, worldwide license to prepare derivative works, publish, or reproduce this manuscript, and allow others to do so, for United States Government purposes. Any publisher accepting this manuscript for publication acknowledges that the United States Government retains such a license in any published form of this manuscript. All other rights are retained by the copyright owner.

Trade names and trademarks are used in this report for identification only. Their usage does not constitute an official endorsement, either expressed or implied, by the National Aeronautics and Space Administration.

*Level of Review: This material has been technically reviewed by technical management*

---

Available from:  
NASA Center for AeroSpace Information  
7115 Standard Drive  
Hanover, MD 21076-1320

National Technical Information Service  
5285 Port Royal Road  
Springfield, VA 22161 Price Code: A17

---

## Abstract

In this paper, we investigated whether the assimilation of remotely-sensed chlorophyll data can improve the estimates of air-sea carbon dioxide fluxes ( $\text{FCO}_2$ ). Using a global, established biogeochemical model (NASA Ocean Biogeochemical Model, NOBM) for the period 2003-2010, we found that the global  $\text{FCO}_2$  values produced in the free-run and after assimilation were within  $-0.6 \text{ mol C m}^{-2} \text{ y}^{-1}$  of the observations. The effect of satellite chlorophyll assimilation was assessed in 12 major oceanographic regions. The region with the highest bias was the North Atlantic. Here the model underestimated the fluxes by  $1.4 \text{ mol C m}^{-2} \text{ y}^{-1}$  whereas all the other regions were within  $1 \text{ mol C m}^{-2} \text{ y}^{-1}$  of the data. The  $\text{FCO}_2$  values were not strongly impacted by the assimilation, and the uncertainty in  $\text{FCO}_2$  was not decreased, despite the decrease in the uncertainty in chlorophyll concentration. Chlorophyll concentrations were within  $\sim 25\%$  of the database in 7 out of the 12 regions, and the assimilation improved the chlorophyll concentration in the regions with the highest bias by 10-20%. These results suggest that the assimilation of chlorophyll data does not considerably improve  $\text{FCO}_2$  estimates and that other components of the carbon cycle play a role that could further improve our  $\text{FCO}_2$  estimates.



# Table of Contents

List of Figures .....	4
Introduction .....	5
2. Methods.....	7
3. Results.....	8
3.1 Chlorophyll Comparisons with Data .....	8
3.2 FCO <sub>2</sub> Comparisons with Data.....	12
4. Discussion .....	15
References .....	18
Appendix A: Acknowledgements .....	19

## List of Figures

Figure 1: Delineation of the 12 major oceanographic basins. ....	7
Figure 2: Ocean Basin Correlation between the satellite-based estimates of chlorophyll and both the free-run and the assimilation values over the different ocean basins. (*) indicates statistical significance ( $p < 0.05$ ), NS = not significant. ....	9
Figure 3: Chlorophyll concentrations for the free-run, the assimilation run, and the satellite database, globally and in the twelve major oceanographic regions. ....	10
Figure 4: Map of Chlorophyll concentration ( $\mu\text{g chl L}^{-1}$ ) in June 2005 for (a) MODIS Aqua, (b) Free-run and (c) after assimilation of the MODIS Aqua satellite data. ....	11
Figure 5: Air-Sea fluxes ( $\text{mol C m}^{-2} \text{y}^{-1}$ ) for the free-run, the assimilation run, and the database globally and in the twelve major oceanographic regions. ....	13
Figure 6: Map of $\text{FCO}_2$ ( $\text{mol C m}^{-2} \text{y}^{-1}$ ) from (a) the LDEO database, (b) the free-run and (c) after assimilation of satellite chlorophyll for June 2005. ....	14
Figure 7: Correlation between the satellite database of $\text{FCO}_2$ and the $\text{FCO}_2$ values produced in the free-run and after assimilation. (*) indicates statistical significance ( $p < 0.05$ ), NS = not significant. ....	15



## Introduction

Every year, approximately 90 gigatons of carbon are exchanged between the atmosphere and the ocean (Falkowski et al., 2000). Ocean sinks account for ~half of the anthropogenic CO<sub>2</sub> emissions (Sabine et al., 2004). On longer time scales, deep-ocean export of carbon together with land-atmosphere exchanges plays an important role and is expected to be the dominant sink of anthropogenic carbon. In the subtropical ocean (~40°N and S), water loses heat to the atmosphere and consequently takes up CO<sub>2</sub> from the atmosphere (Takahashi et al., 2009). Inversely to the effect of temperature on pCO<sub>2</sub>, the phytoplankton community takes up CO<sub>2</sub> and thrives in nutrient-rich (e.g. recently upwelled) water, thereby counteracting and in some cases overwhelming the effects of recently cold, CO<sub>2</sub>-rich, upwelled water. The air-sea CO<sub>2</sub> fluxes in high latitude oceans are governed primarily by deep convection in winter and biological uptake during spring and summer. At lower latitudes the warm water increases pCO<sub>2</sub> in the ocean and leads to a loss of CO<sub>2</sub> to the atmosphere. Process-based understanding of ocean carbon cycle is needed to predict future variations in the efficacy of the oceanic carbon sink.

Takahashi et al. (2002) amassed ~1 million surface pCO<sub>2</sub> observations and used these to derive air-sea CO<sub>2</sub> fluxes for a nominal year, namely, 1995 (Takahashi et al., 2002). Uncertainties about these fluxes are directly linked to the spatial and temporal coverage of the measurements as well as the relationship between wind speeds on air-sea CO<sub>2</sub> gas transfer velocity. Others have used biogeochemical models of different level of complexity, whether local or global, to estimate the source and sinks of CO<sub>2</sub>. Gregg et al. (2013) used MERRA reanalysis data to force an ocean biogeochemical model (NASA Ocean Biogeochemical Model, or NOBM) and compared the fluxes obtained with those from public archives. The model produced global mean differences of 0.02% (~0.3 μM) for Dissolved Organic Carbon (DIC), -0.3% (-1.2 μatm) for pCO<sub>2</sub> and -2.3% (-0.03 mol C m<sup>-2</sup> y<sup>-1</sup>) for FCO<sub>2</sub> compared to in situ estimates. Basin-scale distributions of all three variables were significantly correlated with observations. They found that the regions with the largest differences between the carbon dioxide fluxes from the model and the observations were in the South Atlantic, South Pacific, North Indian, Equatorial Atlantic and North Pacific.

Despite some considerable basin-scale and local departures, they found that all basins were represented as sources to the atmosphere or sinks in agreement with in situ estimates.

Data assimilation techniques can be used to constrain the model to track observation time series and to optimize certain variables. The assimilation of satellite chlorophyll is known to reduce spatial and temporal biases of satellite data. The assimilation of satellite chlorophyll produces estimates within 0.1% bias and 33.4% uncertainty as compared to in situ data (Gregg, 2008) thereby decreasing the bias of satellite data (-1.3%) while keeping the same level of uncertainty (32.7%, Gregg, 2008). Using twin experiments, Tjiputra et al. (2007) assimilated SeaWiFS chlorophyll in an adjoint model and found that the model-data misfit was reduced and that the posteriori run produced realistic carbon flux prediction. Similarly, using 1-D twin experiments for two contrasting locations in the North Atlantic, Hemmings et al. (2008) found that the assimilation of ocean color improved surface pCO<sub>2</sub>. Here we investigate whether the assimilation of satellite-derived chlorophyll *a* data can improve carbon dioxide fluxes estimates using a global biogeochemical model that assimilates satellite-derived chlorophyll. We assess the effects of chlorophyll data assimilation on carbon dioxide fluxes globally and in 12 major oceanographic regions (Figure 1) for the period from 2003 until 2010.

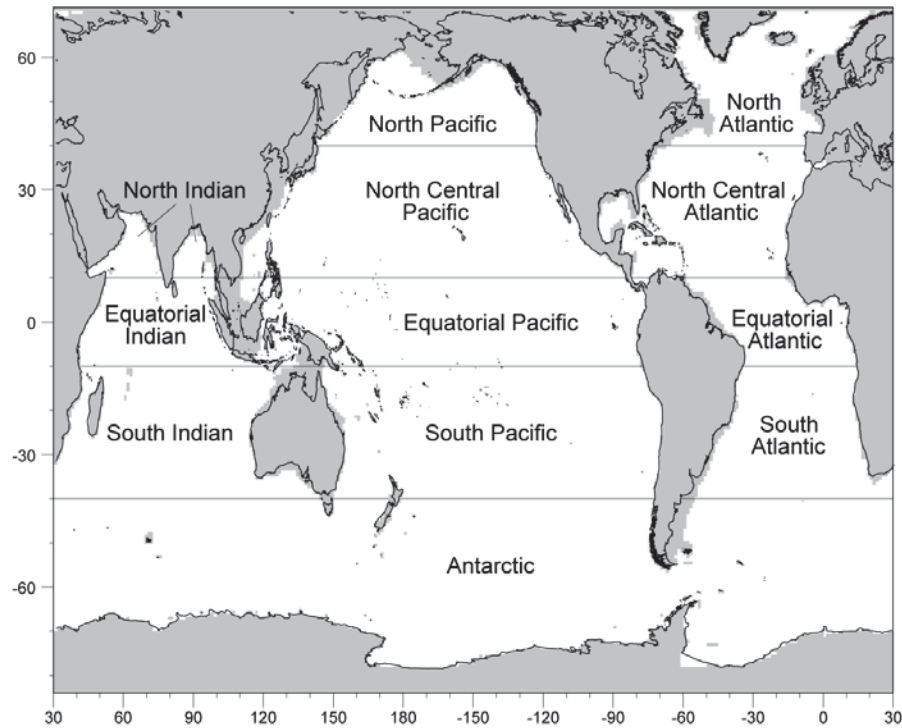


Figure 1: Delineation of the 12 major oceanographic basins.

## 2. Methods

Global ocean carbon dynamics were simulated using the NASA Ocean Biogeochemical Model (NOBM) for the period 2003-2010. NOBM is a three-dimensional representation of circulation/biogeochemical/radiative processes in a domain that spans from  $-84^{\circ}$  to  $72^{\circ}$  at a  $1.25^{\circ}$  resolution in water deeper than 200 m. NOBM is coupled with the Poseidon ocean general circulation model, which is driven by wind stress, sea surface temperature, and shortwave radiation (Gregg and Casey, 2007). The model includes 3 detrital pools (silica, N/C and iron detritus), 4 phytoplankton groups (diatoms, coccolithophores, chlorophytes and cyanobacteria) and 4 nutrients (ammonium, nitrate, iron and silicate). The phytoplankton groups differ in their maximum growth rates, sinking rates, nutrient requirements, and optical properties.

Carbon cycling involves dissolved organic carbon (DOC) and dissolved inorganic carbon (DIC). DOC has sources from phytoplankton, herbivores, and carbon detritus, and a sink to DIC. DIC has sources from phytoplankton, herbivores, carbon detritus, and DOC, and it can be exchanged with the atmosphere, which serves as either a source or a sink. The ecosystem sink

for DIC is phytoplankton, through photosynthesis. A complete description of the model can be found in Gregg et al. (2013). The main output of interest in this effort is the flux of CO<sub>2</sub> (FCO<sub>2</sub>, notation following Arrigo et al., 2010; Doney et al., 2009), representing the exchange of carbon between the atmosphere and ocean. Positive is defined upward, indicating a source to the atmosphere. The fluxes from the model are compared to a data set obtained from the Lamont-Doherty Earth Observatory (LDEO)

([http://cdiac.ornl.gov/oceans/LDEO\\_Underway\\_Database/index.html](http://cdiac.ornl.gov/oceans/LDEO_Underway_Database/index.html); Takahashi et al., 2009). These in situ LDEO data use pCO<sub>2</sub> and estimate fluxes from wind speed reanalysis data and climatological nutrients from the National Oceanographic Data Center (Takahashi et al., 2009).

The model is initialized with DIC from GLODAP (GLobal Ocean Data Analysis Project) and is spun up with climatological forcing data from MERRA and atmospheric pCO<sub>2</sub> data from NOAA ESRL for the year 2000 (368.6 μatm). The model is spun up for 200 years to remove residual trends from the model and produce a steady state (Gregg et al., 2013). It is then run from 2003 to 2010 using time-varying forcing data from MERRA and atmospheric pCO<sub>2</sub> for each year from NOAA ESRL. A concurrent run utilizes MODIS Aqua chlorophyll data in assimilation mode (Gregg, 2008). Multi-variate nutrient adjustments corresponding to the chlorophyll assimilation (Rousseaux and Gregg, 2012) are also included in this latter run. The fluxes derived from a free-running simulation (hereafter referred to as free-run) model are compared to those from the run with MODIS Aqua chlorophyll data assimilation and to the estimates from Takahashi et al. (2009). The chlorophyll concentrations from both the free-run and after assimilation are compared to the Level 3 MODIS Aqua chlorophyll data.

### **3. Results**

#### **3.1 Chlorophyll Comparisons with Data**

The correlation coefficients between satellite-derived chlorophyll and chlorophyll from the model increased considerably after assimilation. The correlation coefficients for the free-run ranged over the years from 0.54 to 0.69, whereas those for the assimilation run ranged from 0.84 to 0.96 (Figure 2). The correlation between satellite chlorophyll concentration and chlorophyll concentration from the model (from either run) was significant for all years between 2003 and 2010.

Chlorophyll concentrations were within ~25% of the satellite chlorophyll in seven of the 12 regions (Figure 3). The regions with the highest biases (>30%, both in free-run and after assimilation) were the North Indian, North Pacific and North Atlantic. In those regions, where the bias was high, the assimilation marginally improved the chlorophyll concentration (by 10-20%, Figure 4). Note that these regions also correspond to where the highest chlorophyll concentration was encountered (~0.55  $\mu\text{g chl L}^{-1}$ ).

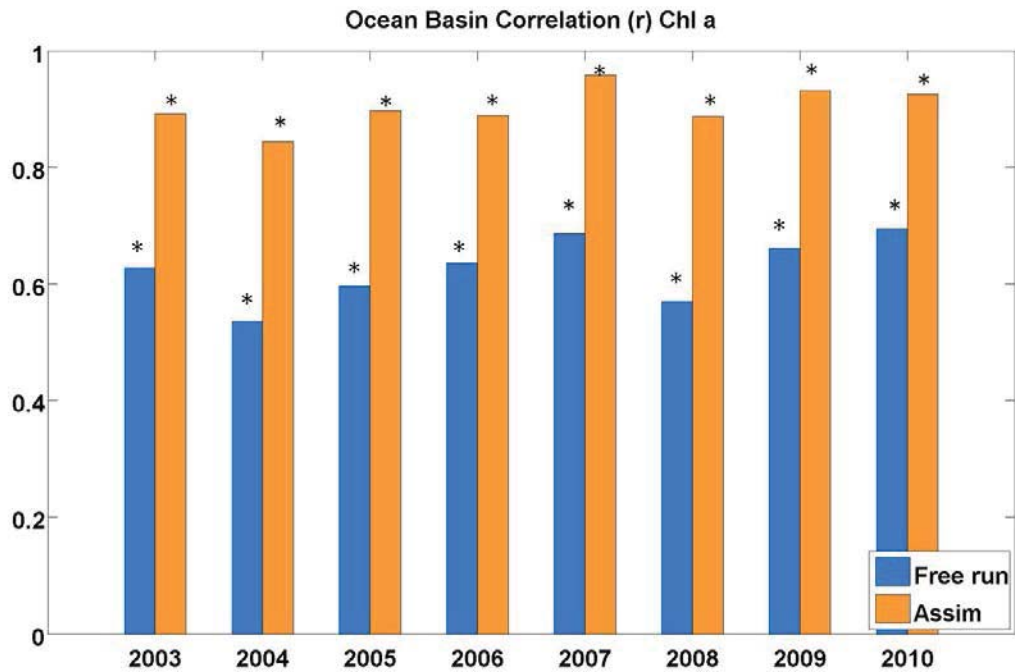


Figure 2: Ocean Basin Correlation between the satellite-based estimates of chlorophyll and both the free-run and the assimilation values over the different ocean basins. (\*) indicates statistical significance ( $p < 0.05$ ), NS = not significant.

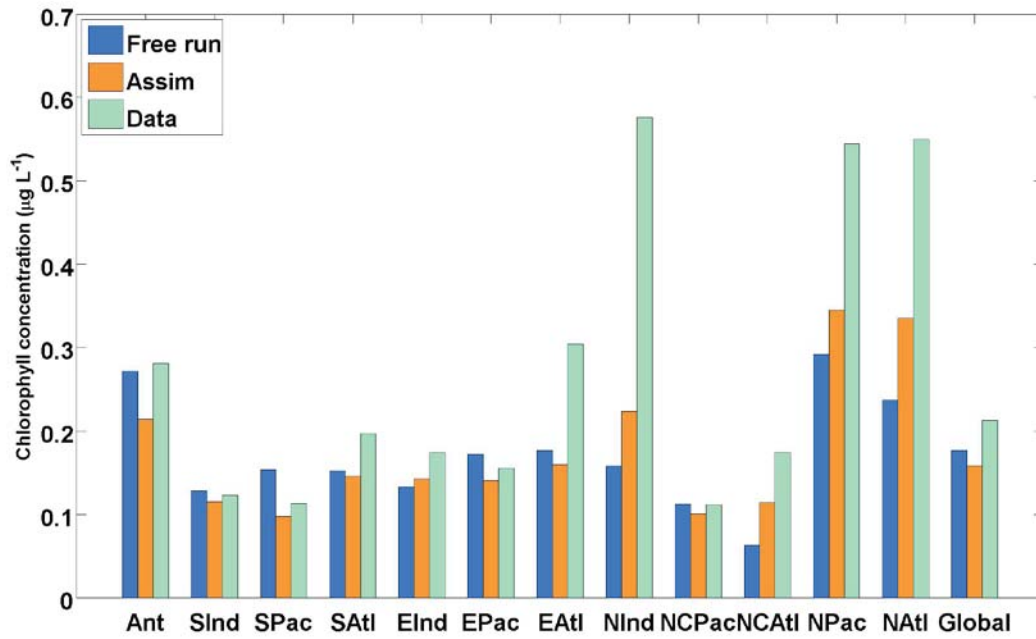


Figure 3: Chlorophyll concentrations for the free-run, the assimilation run, and the satellite database, globally and in the twelve major oceanographic regions.

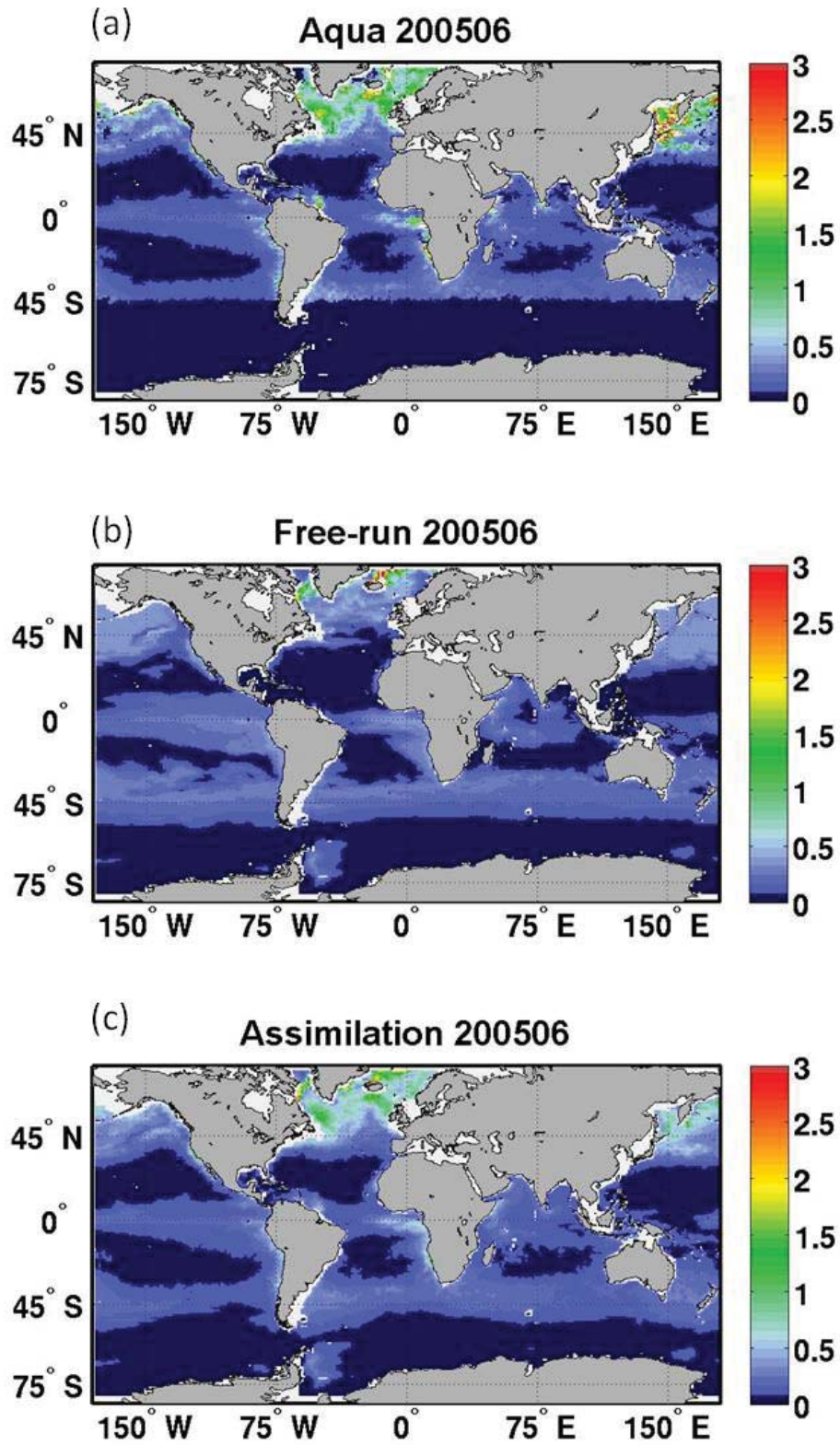


Figure 4: Map of Chlorophyll concentration ( $\mu\text{g chl L}^{-1}$ ) in June 2005 for (a) MODIS Aqua, (b) Free-run and (c) after assimilation of the MODIS Aqua satellite data.

### 3.2 FCO<sub>2</sub> Comparisons with Data

Globally and regionally, we found that the fluxes were not greatly impacted by the assimilation of satellite chlorophyll (Figure 5 and Figure 6). In nine out of the twelve regions, the difference between the fluxes from the free-run and those after assimilation was less than 0.1 mol C m<sup>-2</sup> y<sup>-1</sup>. The three regions where these differences were greater than 0.1 mol C m<sup>-2</sup> y<sup>-1</sup> were the North Central Atlantic, South Pacific and South Indian. In the southern basins the assimilation run produced the more biased flux estimates, though the increase in bias was small (Figure 5 and Figure 6).

Globally the fluxes produced by the free-run and after assimilation were -0.25 mol C m<sup>-2</sup> y<sup>-1</sup>, which represents an underestimate of FCO<sub>2</sub> by ~0.6 mol C m<sup>-2</sup> y<sup>-1</sup> (Figure 5). The region with the greatest difference between the data and modeled FCO<sub>2</sub>, for both runs, was the North Atlantic, where the model underestimated the fluxes by 1.4 mol C m<sup>-2</sup> y<sup>-1</sup>. All the other regions were within ~1 mol C m<sup>-2</sup> y<sup>-1</sup> of the data. In the North Atlantic, the assimilation improved the FCO<sub>2</sub> by a marginal 0.04 mol C m<sup>-2</sup> y<sup>-1</sup>. In general the fluxes produced by the model were weaker than the in situ estimates (Figure 5). This was especially true in the regions north and south of 10°.

The regions that served as the highest sinks and sources of FCO<sub>2</sub> were the same before and after assimilation. For both runs, the region with the highest FCO<sub>2</sub> sink was the North Atlantic (~-0.7 mol C m<sup>-2</sup> y<sup>-1</sup>) followed by the South Atlantic (~-0.6 mol C m<sup>-2</sup> y<sup>-1</sup>). Of the twelve major regions, only two (Equatorial Indian and Equatorial Pacific) were a source of CO<sub>2</sub> (FCO<sub>2</sub> of 0.05 and 0.26 mol C m<sup>-2</sup> y<sup>-1</sup>). The Equatorial Pacific also became a source of CO<sub>2</sub> after assimilation (0.24 mol C m<sup>-2</sup> y<sup>-1</sup>), but the FCO<sub>2</sub> in the Equatorial Indian became slightly negative after the assimilation (-0.003 mol C m<sup>-2</sup> y<sup>-1</sup>). The Equatorial Atlantic and North Indian were the only two regions for which the fluxes from the database were positive but the FCO<sub>2</sub> produced by the model in both the free-run and assimilation were negative.

The assimilation of chlorophyll did not decrease the uncertainty in FCO<sub>2</sub> (Figure 7). There was a significant correlation between modeled FCO<sub>2</sub> and the fluxes from the database for six out of the eight years analyzed, namely, 2003-2008. Correlation coefficients for these six years were a minimum of 0.72 for the free-run and a minimum of 0.76 for the assimilation run. The correlation between the data and the model at regional levels was highly dependent on the number of observations available. In 2009 and 2010, when the number of months of available



data dropped to 7 and 4, the correlation was no longer significant. Out of the six years for which significant correlations were found, the correlation coefficients for the assimilation run were only slightly improved over those in the free-run for three years.

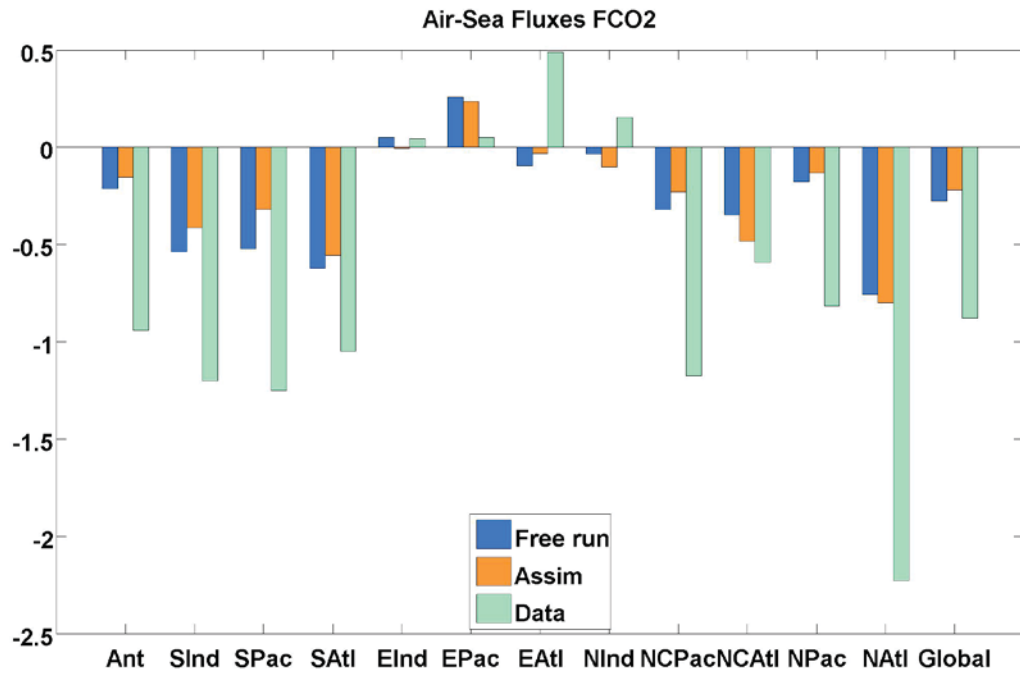


Figure 5: Air-Sea fluxes (mol C m<sup>-2</sup> y<sup>-1</sup>) for the free-run, the assimilation run, and the database globally and in the twelve major oceanographic regions.

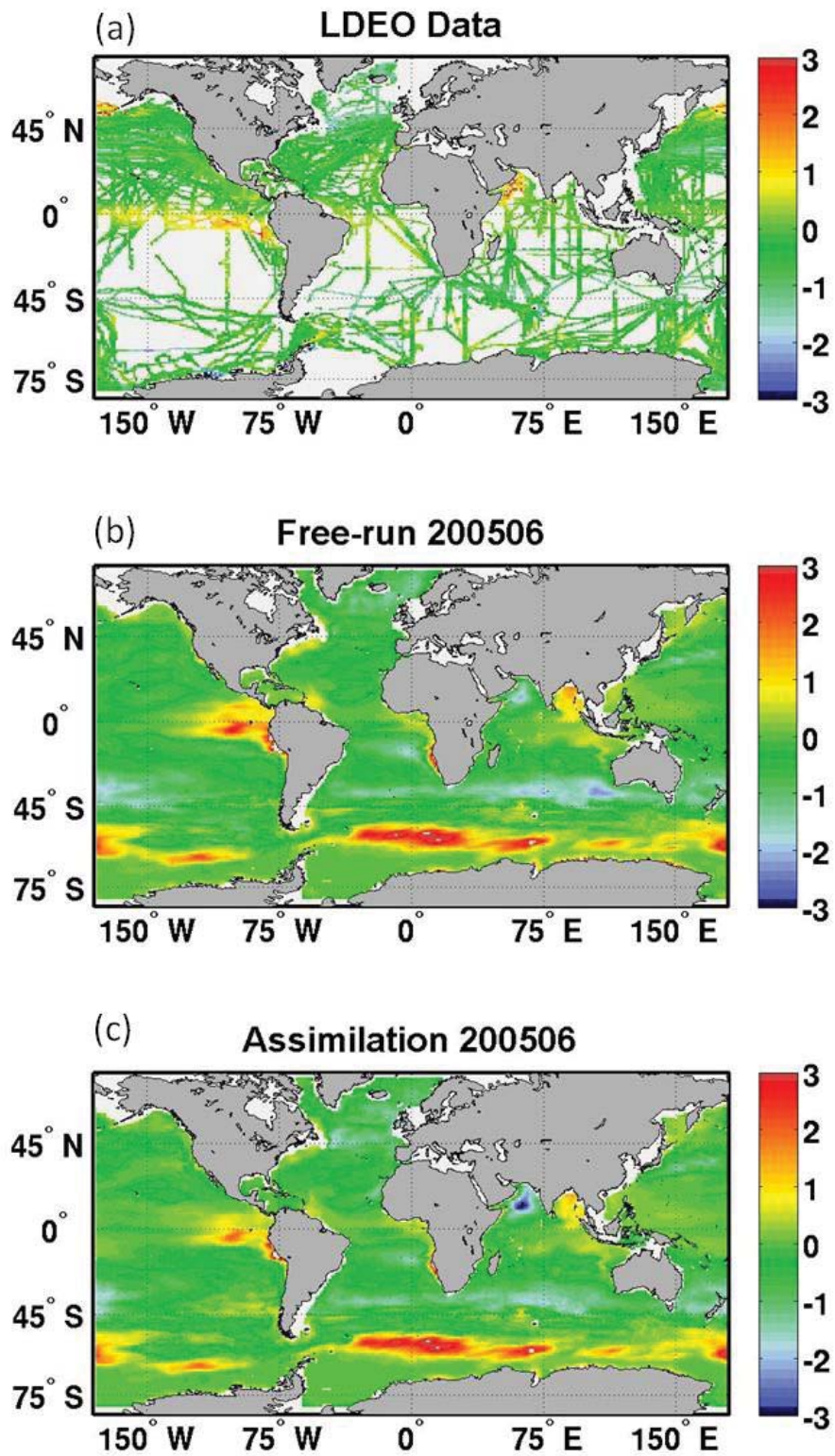


Figure 6: Map of  $\text{FCO}_2$  (mol C m<sup>-2</sup> y<sup>-1</sup>) from (a) the LDEO database, (b) the free-run and (c) after assimilation of satellite chlorophyll for June 2005.

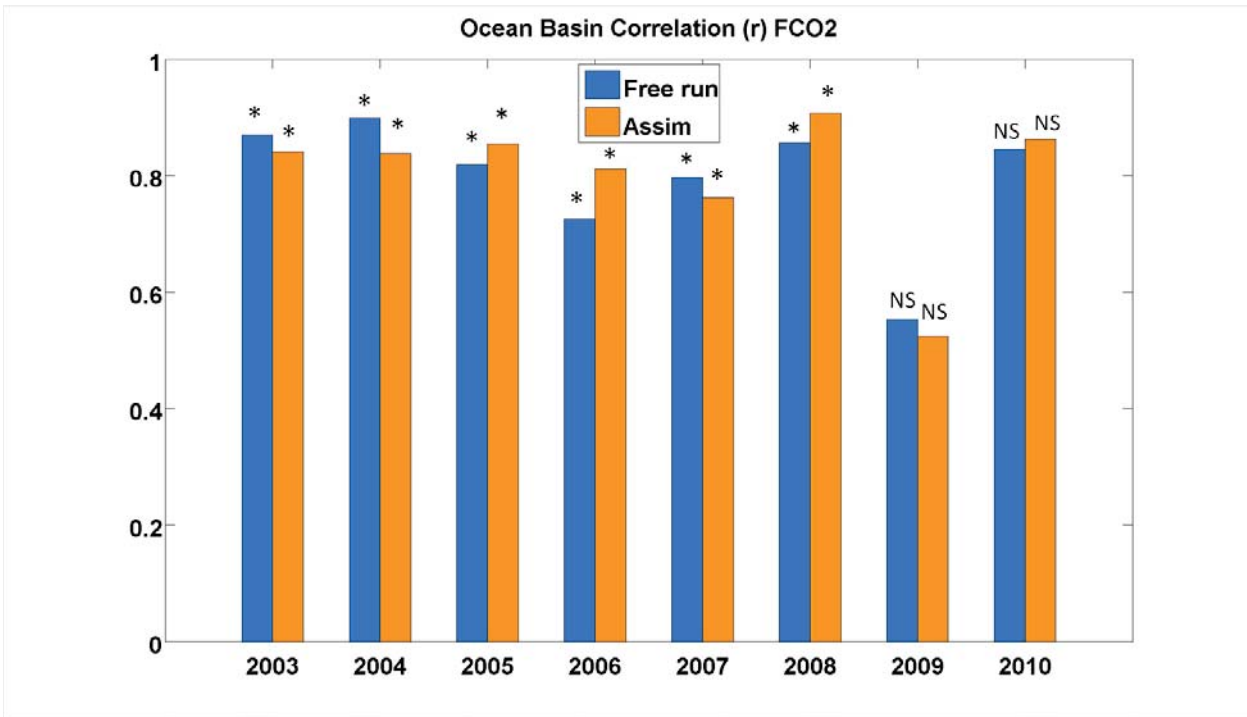


Figure 7: Correlation between the satellite database of FCO<sub>2</sub> and the FCO<sub>2</sub> values produced in the free-run and after assimilation. (\*) indicates statistical significance ( $p < 0.05$ ), NS = not significant.

#### 4. Discussion

The assimilation of satellite chlorophyll in NOBM was shown to decrease the uncertainties in chlorophyll concentration but to have little impact on simulated FCO<sub>2</sub>. The regions where the highest biases in FCO<sub>2</sub> were found (North Indian, North Pacific and North Atlantic) were not improved by the assimilation. Note that these three regions also show the greatest bias in chlorophyll concentration. Monthly maps of chlorophyll concentration (not shown) in these three regions highlight the fact that the satellite-based estimates there are particularly high during specific times of the year. For example, in the North Pacific and North Atlantic, the satellite chlorophyll is considerably higher than the model during the spring and summer. Clouds are one of the largest sources of sampling error, especially in the North Pacific (Gregg and Casey, 2007). Here, even in the middle of the growing season, there can be <5 days of observations per month. The presence of these clouds can lead to overestimate in chlorophyll concentration that are driven by period of high growth that occur during limiting periods of clear skies suitable for

remote sensing. Gregg and Casey (2007) also reported biases due to clouds in the North Atlantic, although they noted that the overestimates tend to be smaller than in the North Pacific. The third region where bias is considerable is the North Indian. In this region, aerosols are known to contribute to sampling error (Gregg and Casey 2007). Aerosol obscurations increase before and during the Monsoon season, at the same time as does chlorophyll. In this study, we found that the satellite chlorophyll values were considerably higher than those produced by the model in either the free-run and assimilation only during the northeast monsoon (between November and February). Other sources of bias include sun glint, inter-orbit gap, and sensor tilt changes, all of which occur primarily in mid-latitudes (Gregg & Casey 2007).

The correlations between the FCO<sub>2</sub> values estimated from in situ measurements and those produced by the model in either the free-run model/assimilation were significant for the first six years of the study (2003-2008). The high correlation coefficients indicate a reasonably low uncertainty in our model-derived FCO<sub>2</sub>. The correlation for FCO<sub>2</sub> was again not significant for 2009 and 2010 due to a lack of data in those years. No clear improvements in either correlation or bias resulted from the assimilation of satellite chlorophyll.

The North Atlantic was the region with the greatest difference between the observations-based data and the modeled FCO<sub>2</sub> (from either run). Although the biased sampling in satellite chlorophyll is likely to have played a role here, the limited effect the assimilation had on FCO<sub>2</sub> in other regions indicates that other processes may be responsible. Chlorophyll is only one of the several components in the ocean carbon system, and therefore modest changes from the assimilation are not unrealistic. Deficiencies in carbon cycling processes in the model are not ameliorated by the improved chlorophyll abundances and distributions associated with the satellite chlorophyll assimilation. In fact, the simulated fluxes can actually get worse through assimilation (e.g., in the southern basins, as shown in Figure 5). This is likely the result of compensating deficiencies in the free-run model, where flaws in the simulated biological components compensate flaws in the carbon components. The chlorophyll compensation corrects the estimates of chlorophyll but not the underlying biological processes, exposing the carbon cycling issues. It is not clear whether this issue is unique to our model formulation or whether it is, in fact, general. It is reassuring that the correlations between data estimates and models are significant when sufficient in situ data are available, but it is also disconcerting that the biases are large.

In conclusion, these results suggest that ocean carbon and biological systems are complex and that work is needed to improve their representations in models, independently and simultaneously. Data assimilation of chlorophyll is not a panacea for model deficiencies. The number of products that can be derived from satellite ocean color is increasing, and the assimilation of products other than chlorophyll may further improve the fluxes estimates. Finally, the regions with the highest biases are complex regions which further reinforce our need to improve, through combined satellite and modeling efforts, our understanding of the complex interactions underlying the global carbon cycle. Further sensitivity analyses are needed to detect the components of the ocean carbon system that, if modeled and quantified more accurately, can lead to improved FCO<sub>2</sub> estimates both regionally and globally.

## References

- Arrigo, K.R., Pabi, S., van Dijken, G.L., Maslowski, W., 2010. Air-sea flux of CO<sub>2</sub> in the Arctic Ocean, 1998-2003. *Journal of Geophysical Research* 115.
- Doney, S.C., Lima, I., Feely, R.A., Glover, D.M., Lindsay, K., Mahowald, N., Moore, J.K., Wanninkhof, R., 2009. Mechanisms governing interannual variability in upper-ocean inorganic carbon system and air-sea CO<sub>2</sub> fluxes: Physical climate and atmospheric dust. *Deep Sea Research Part II* 56, 640-655.
- Falkowski, P., Scholes, R.J., Boyle, E., Canadell, J., Canfield, D., Elser, J., Gruber, N., Hibbard, K., Hogberg, P., Linder, S., Mackenzie, F.T., Moore, B., Pedersen, T., Rosenthal, Y., Seitzinger, S., Smetacek, V., Steffen, W., 2000. The global carbon cycle: a test of our knowledge of earth as a system. *Science* 290, 291-296.
- Gregg, W.W., 2008. Assimilation of SeaWiFS ocean chlorophyll data into a three-dimensional global ocean model. *Journal of Marine Systems* 69, 205-225.
- Gregg, W.W., Casey, N.W., 2007. Modeling coccolithophores in the global oceans. *Deep-Sea Research Part II* 54, 447-477.
- Gregg, W.W., Casey, N.W., Rousseaux, C.S., 2013. Global surface ocean estimates in a model forced by MERRA. *NASA Global Modeling and Assimilation Series*, M. Suarez, ed., NASA Technical Memorandum 2012-104606, Vol. 31, 32 pp.
- Hemmings, J.C., Barciela, R.M., Bell, M.J., 2008. Ocean color data assimilation with material conservation for improving model estimates of air-sea CO<sub>2</sub> flux. *Journal of Marine Research* 66, 87-126.
- Rousseaux, C.S., Gregg, W.W., 2012. Climate variability and phytoplankton composition in the Pacific Ocean. *Journal of Geophysical Research* 117, C10006.
- Sabine, C.L., Feely, R.A., Gruber, N., Key, R.M., Lee, K., Bullister, J.L., Wanninkhof, R., Wong, C., Wallace, D.W., Tilbrook, B., 2004. The oceanic sink for anthropogenic CO<sub>2</sub>. *science* 305, 367-371.
- Takahashi, T., Sutherland, S.C., Sweeney, C., Poisson, A., Metzl, N., Tilbrook, B., Bates, N., Wanninkhof, R., Feely, R.A., Sabine, C., 2002. Global sea-air CO<sub>2</sub> flux based on climatological surface ocean pCO<sub>2</sub>, and seasonal biological and temperature effects. *Deep Sea Research Part II* 49, 1601-1622.
- Takahashi, T., Sutherland, S.C., Wanninkhof, R., Sweeney, C., Feely, R.A., Chipman, D.W., Hales, B., Friederich, G., Chavez, F., Sabine, C., 2009. Climatological mean and decadal change in surface ocean pCO<sub>2</sub>, and net sea-air CO<sub>2</sub> flux over the global oceans. *Deep Sea Research Part II* 56, 554-577.
- Tjiputra, J.F., Polzin, D., Winguth, A.M., 2007. Assimilation of seasonal chlorophyll and nutrient data into an adjoint three-dimensional ocean carbon cycle model: Sensitivity analysis and ecosystem parameter optimization. *Global biogeochemical cycles* 21.

## **Appendix A: Acknowledgements**

We thank the NASA/MERRA Project, Lamont-Doherty Earth Observatory, NOAA Carbon Dioxide Information Analysis Center, and the NOAA National Oceanographic Data Center for the data sets and public availability. This work was supported by the NASA MAP and CMS Programs.

## Previous Volumes in This Series

- Volume 1**  
*September*  
1994  
Documentation of the Goddard Earth Observing System (GEOS) general circulation model - Version 1  
**L.L. Takacs, A. Molod, and T. Wang**
- Volume 2**  
*October 1994*  
Direct solution of the implicit formulation of fourth order horizontal diffusion for gridpoint models on the sphere  
**Y. Li, S. Moorthi, and J.R. Bates**
- Volume 3**  
*December*  
1994  
An efficient thermal infrared radiation parameterization for use in general circulation models  
**M.-D. Chou and M.J. Suarez**
- Volume 4**  
*January 1995*  
Documentation of the Goddard Earth Observing System (GEOS) Data Assimilation System - Version 1  
**James Pfaendtner, Stephen Bloom, David Lamich, Michael Seablom, Meta Sienkiewicz, James Stobie, and Arlindo da Silva**
- Volume 5**  
*April 1995*  
Documentation of the Aries-GEOS dynamical core: Version 2  
**Max J. Suarez and Lawrence L. Takacs**
- Volume 6**  
*April 1995*  
A Multiyear Assimilation with the GEOS-1 System: Overview and Results  
**Siegfried Schubert, Chung-Kyu Park, Chung-Yu Wu, Wayne Higgins, Yelena Kondratyeva, Andrea Molod, Lawrence Takacs, Michael Seablom, and Richard Rood**
- Volume 7**  
*September*  
1995  
Proceedings of the Workshop on the GEOS-1 Five-Year Assimilation  
**Siegfried D. Schubert and Richard B. Rood**
- Volume 8**  
*March 1996*  
Documentation of the Tangent Linear Model and Its Adjoint of the Adiabatic Version of the NASA GEOS-1 C-Grid GCM: Version 5.2  
**Weiyu Yang and I. Michael Navon**
- Volume 9**  
*March 1996*  
Energy and Water Balance Calculations in the Mosaic LSM  
**Randal D. Koster and Max J. Suarez**
- Volume 10**  
*April 1996*  
Dynamical Aspects of Climate Simulations Using the GEOS General Circulation Model  
**Lawrence L. Takacs and Max J. Suarez**
- Volume 11**  
*May 1997*  
Documentation of the Tangent Linear and its Adjoint Models of the Relaxed Arakawa-Schubert Moisture Parameterization Package of the NASA GEOS-1 GCM (Version 5.2)  
**Weiyu Yang, I. Michael Navon, and Ricardo Todling**
- Volume 12**  
*August 1997*  
Comparison of Satellite Global Rainfall Algorithms  
**Alfred T.C. Chang and Long S. Chiu**
- Volume 13**  
*December*  
Interannual Variability and Potential Predictability in Reanalysis Products



- 1997 **Wie Ming and Siegfried D. Schubert**
- Volume 14**  
*August 1998* A Comparison of GEOS Assimilated Data with FIFE Observations  
**Michael G. Bosilovich and Siegfried D. Schubert**
- Volume 15**  
*June 1999* A Solar Radiation Parameterization for Atmospheric Studies  
**Ming-Dah Chou and Max J. Suarez**
- Volume 16**  
*November 1999* Filtering Techniques on a Stretched Grid General Circulation Model  
**Lawrence Takacs, William Sawyer, Max J. Suarez, and Michael S. Fox-Rabinowitz**
- Volume 17**  
*July 2000* Atlas of Seasonal Means Simulated by the NSIPP-1 Atmospheric GCM  
**Julio T. Bacmeister, Philip J. Pegion, Siegfried D. Schubert, and Max J. Suarez**
- Volume 18**  
*December 2000* An Assessment of the Predictability of Northern Winter Seasonal Means with the NSIPP1 AGCM  
**Philip J. Pegion, Siegfried D. Schubert, and Max J. Suarez**
- Volume 19**  
*July 2001* A Thermal Infrared Radiation Parameterization for Atmospheric Studies  
**Ming-Dah Chou, Max J. Suarez, Xin-Zhong, and Michael M.-H. Yan**
- Volume 20**  
*August 2001* The Climate of the FVCCM-3 Model  
**Yehui Chang, Siegfried D. Schubert, Shian-Jiann Lin, Sharon Nebuda, and Bo-Wen Shen**
- Volume 21**  
*September 2001* Design and Implementation of a Parallel Multivariate Ensemble Kalman Filter for the Poseidon Ocean General Circulation Model  
**Christian L. Keppenne and Michele M. Rienecker**
- Volume 22**  
*August 2002* Coupled Ocean-Atmosphere Radiative Model for Global Ocean Biogeochemical Models  
**Watson W. Gregg**
- Volume 23**  
*November 2002* Prospects for Improved Forecasts of Weather and Short-term Climate Variability on Subseasonal (2-Week to 2-Month) Time Scales  
**Siegfried D. Schubert, Randall Dole, Huang van den Dool, Max J. Suarez, and Duane Waliser**
- Volume 24**  
*July 2003* Temperature Data Assimilation with Salinity Corrections: Validation for the NSIPP Ocean Data Assimilation System in the Tropical Pacific Ocean, 1993–1998  
**Alberto Troccoli, Michele M. Rienecker, Christian L. Keppenne, and Gregory C. Johnson**
- Volume 25**  
*December 2003* Modeling, Simulation, and Forecasting of Subseasonal Variability  
**Duane Waliser, Siegfried D. Schubert, Arun Kumar, Klaus Weickmann, and Randall Dole**

- Volume 26**  
*April 2005*  
Documentation and Validation of the Goddard Earth Observing System (GEOS) Data Assimilation System – Version 4  
**Senior Authors: S. Bloom, A. da Silva and D. Dee**  
**Contributing Authors: M. Bosilovich, J-D. Chern, S. Pawson, S. Schubert, M. Sienkiewicz, I. Stajner, W-W. Tan, and M-L. Wu**
- Volume 27**  
*December 2008*  
The GEOS-5 Data Assimilation System - Documentation of Versions 5.0.1, 5.1.0, and 5.2.0.  
**M.M. Rienecker, M.J. Suarez, R. Todling, J. Bacmeister, L. Takacs, H.-C. Liu, W. Gu, M. Sienkiewicz, R.D. Koster, R. Gelaro, I. Stajner, and J.E. Nielsen**
- Volume 28**  
*April 2012*  
The GEOS-5 Atmospheric General Circulation Model: Mean Climate and Development from MERRA to Fortuna  
**Andrea Molod, Lawrence Takacs, Max Suarez, Julio Bacmeister, In-Sun Song, and Andrew Eichmann**
- Volume 29**  
*May 2012*  
Atmospheric Reanalyses – Recent Progress and Prospects for the Future. A Report from a Technical Workshop, April 2010  
**Michele M. Rienecker, Dick Dee, Jack Woollen, Gilbert P. Compo, Kazutoshi Onogi, Ron Gelaro, Michael G. Bosilovich, Arlindo da Silva, Steven Pawson, Siegfried Schubert, Max Suarez, Dale Barker, Hirotaka Kamahori, Robert Kistler, and Suranjana Saha**
- Volume 30**  
*September 2012*  
The GEOS-ODAS, description and evaluation  
**Guillaume Vernieres, Michele M. Rienecker, Robin Kovach and Christian L. Keppenne**
- Volume 31**  
*March 2013*  
Global Surface Ocean Carbon Estimates in a Model Forced by MERRA  
**Watson W. Gregg, Nancy W. Casey and Cecile S. Rousseaux**
- Volume 32**  
*April 2013*  
The Quick Fire Emissions Dataset (QFED) – Documentation of versions 2.1, 2.2 and 2.4  
**Anton S. Darmenov and Arlindo da Silva**



