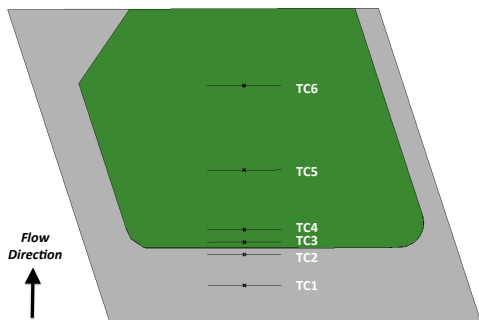
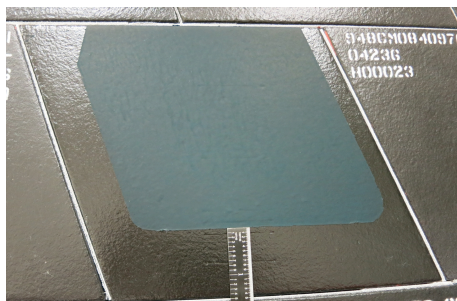


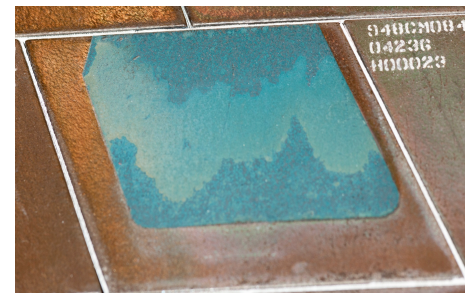
Catalytic tile experiment flown on EFT-1 to gather catalytic overshoot data with increased spatial resolution in laminar and turbulent environments



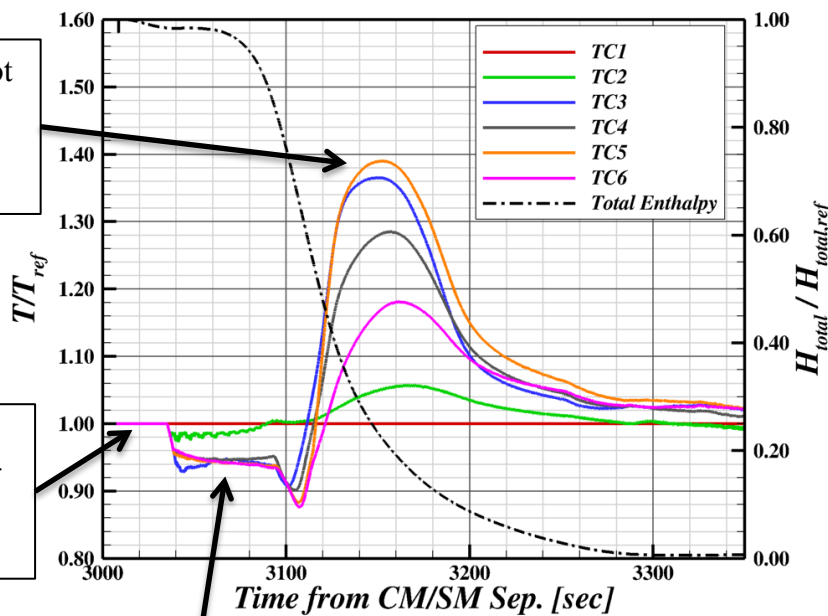
Instrumentation



Pre-flight



Post-flight



TC5 response does not follow expected catalytic overshoot trend

No catalytic heating augmentation seen for some time during re-entry

Unexpected behavior suggests presence of endothermic process on the catalytic patch

