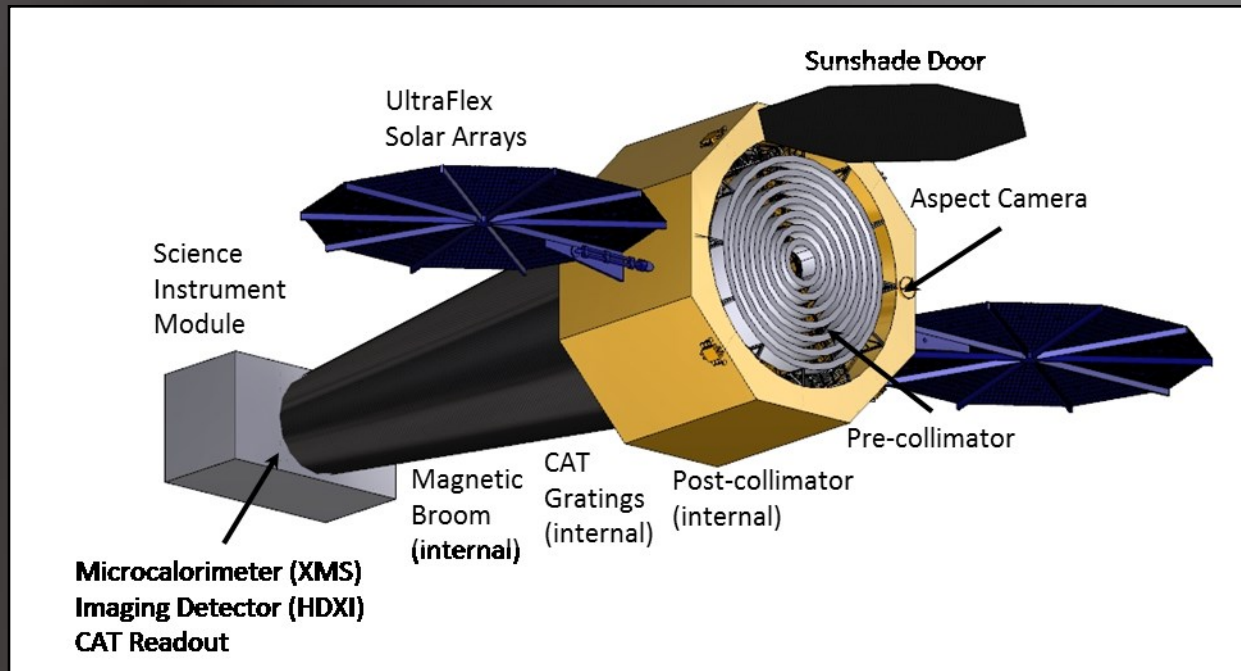


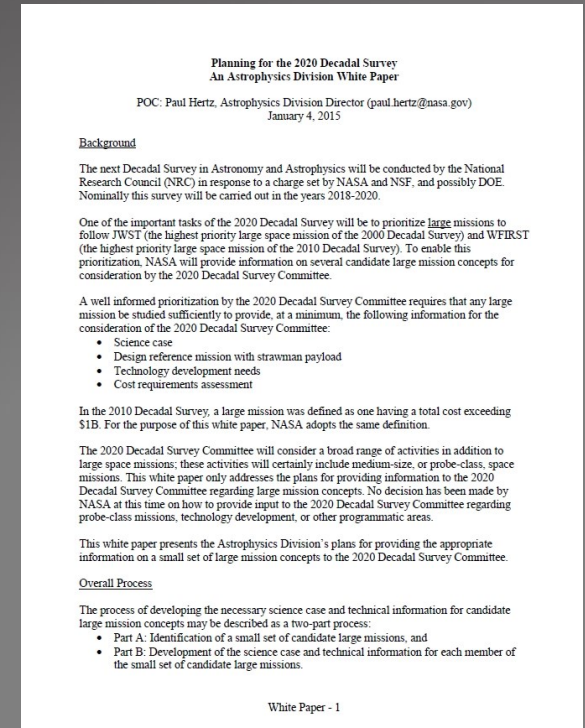
The X-ray Surveyor Mission: A Concept Study

Jessica A. Gaskin (MSFC)
On behalf of the X-ray Surveyor community



2020 Decadal Prioritization

- NASA Astrophysics Division white paper: Planning for the 2020 Decadal Survey
 - ✓ Provided an Initial list of missions drawn from 2010 Decadal Survey and 2013 Astrophysics Roadmap that includes the X-ray Surveyor
 - ✓ The three NASA Program Analysis Groups (PAGs) to coordinate community discussion to review and update list of missions
- PAG reports will be sent to the Astrophysics Subcommittee and then to the Astrophysics Division for selection of mission concepts to study
- Will result in a call for Science and Technology Definition Teams and assignment of lead NASA Center for each study



<http://cor.gsfc.nasa.gov/copag/rfi/>

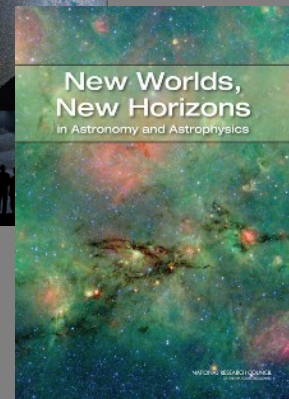
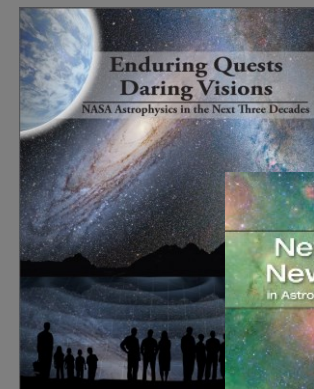
X-ray Surveyor Goals

- **Leaps in Capability:** large area with high angular resolution for 1–2 orders of magnitude gains in sensitivity, field of view with subarcsec imaging, high resolution spectroscopy for point-like and extended sources
- **Feasible:** *Chandra*-like mission with regards to cost and complexity with the new technology for optics and instruments already at TRL3 and proceeding to TRL6 before Phase B
- **Scientifically compelling:** frontier science from Solar system to first accretion light in Universe; revolution in understanding physics of astronomical systems

Consistent with:

NASA Astrophysics Roadmap: Enduring Quests, Daring Visions

201 Astrophysics Decadal Survey: New Worlds, New Horizons



X-Ray Surveyor Science Workshop



- Location: National Museum of the American Indian, Washington, D.C.
- Date: October 6, 7, 8th
- Website: Coming Soon!
- Registration: \$100
- Format: Invited + Contributed + Posters + Discussion Breakout Sessions

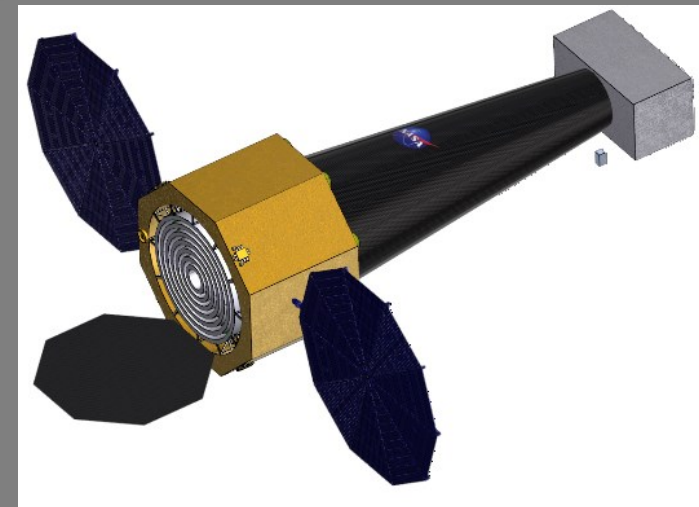
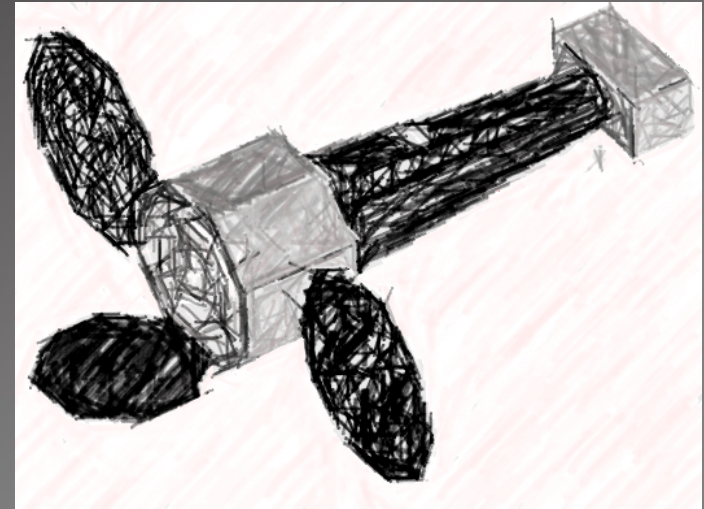
Science Organizing Committee:

Jessica Gaskin (MSFC), Martin Weisskopf (MSFC), Harvey Tananbaum (SAO), Alexey Vikhlinin (SAO), Fabbiano Giuseppina (SAO), Christine Jones (SAO), Eric Feigelson (PSU), Neil Brandt (PSU), Leisa Townsley (PSU), Dave Burrows (PSU), Priya Natarajan (Yale), Maxim Markevitch (GSFC), Andrey Kravtsov (Chic.), Steve Allen (Stanford), Sebastian Heinz (Wisc.), Chryssa Kouveliotou (GWU), Roger Romani (Stanford), Feryal Ozel (Ariz.), Richard Mushotzky (UMD), Mike Nowak (MIT), Rachel Osten (STSCI)

X-ray Surveyor Mission Concept

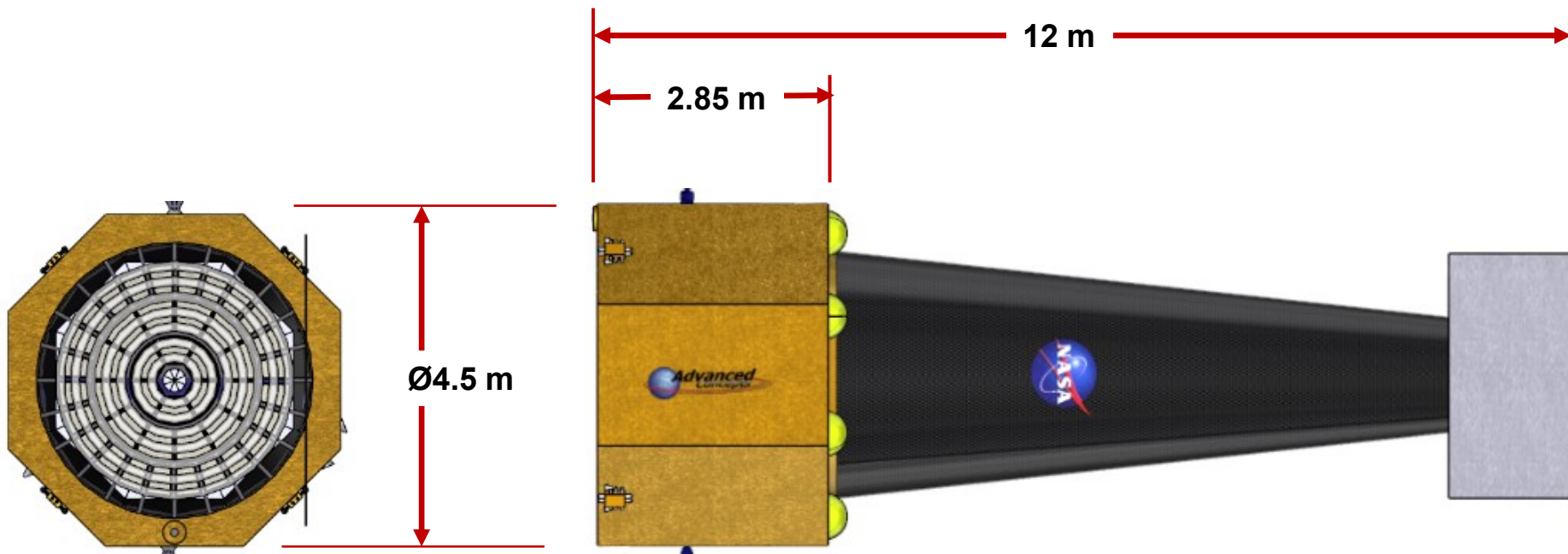
- MSFC ACO Team Led by Randall Hopkins & Andrew Schnell
- Strawman definition:
Spacecraft, instruments, optics, orbit, radiation environment, launch vehicle and costing
- Performed under the guidance of an informal mission concept team comprising the following:

J. A. Gaskin (MSFC), A. Vikhlinin (SAO), M. C. Weisskopf (MSFC), H. Tananbaum (SAO), S. Bandler (GSFC), M. Bautz (MIT), D. Burrows (PSU), A. Falcone (PSU), F. Harrison (Cal Tech), R. Heilmann (MIT), S. Heinz (Wisconsin), C.A. Kilbourne (GSFC), C. Kouveliotou (GWU), R. Kraft (SAO), A. Kravtsov (Chicago), R. McEntaffer (Iowa), P. Natarajan (Yale), S.L. O'Dell (MSFC), A. Ptak (GSFC), R. Petre (GSFC), B.D. Ramsey (MSFC), P. Reid (SAO), D. Schwartz (SAO), L. Townsley (PSU)



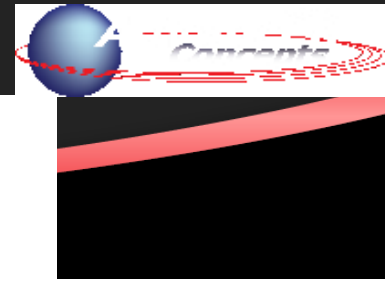
X-ray Surveyor: A Successor to *Chandra*

- Angular resolution at least as good as *Chandra*
- Much higher photon throughput than *Chandra* (observations are photon-limited)
- ✓ Incorporates relevant prior (Con-X, IXO, AXSIO) development and *Chandra* heritage
- ✓ Limits most spacecraft requirements to *Chandra*-like
- ✓ Achieves *Chandra*-like cost



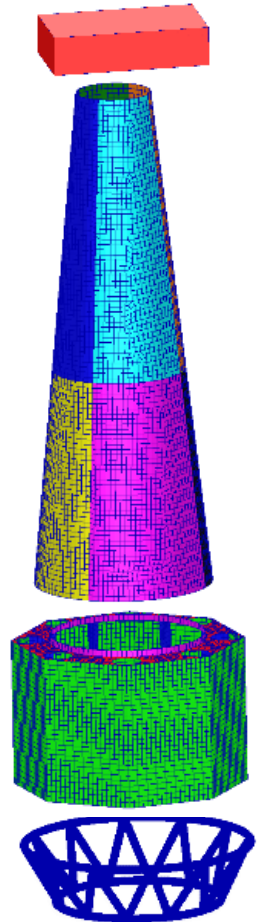


ACO Study Participants



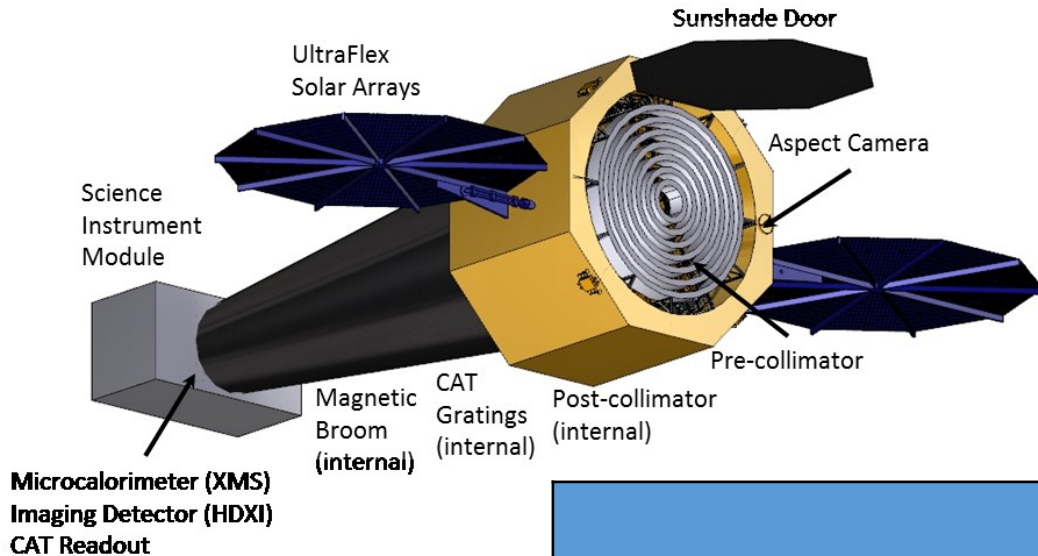
Study Lead Andrew Schnell (ED04)
Study Lead Emeritus Randy Hopkins (ED04)

- Mission Analysis** Dan Thomas (ED04)
Randy Hopkins (ED04)
- Configuration** Mike Baysinger (ED04)
- Propulsion** Dan Thomas (ED04)
- Power** Leo Fabisinski (ED04)
- C&DH** Ben Neighbors (ES12)
- Communications** Ben Neighbors (ES12)
- GN&C**
- Thermal Analysis** Andrew Schnell (ED04)
- Structural Analysis** Jay Garcia (ED04)
- Mechanisms** Alex Few (ES21)
- Environments** Joe Minow (EV44)
- Cost** Spencer Hill (CS50)



AtlasV 5m Long Shroud

Optics & Instruments



- High-resolution X-ray telescope
- Critical Angle Transmission XGS
- X-ray Microcalorimeter Imaging Spectrometer
- High Definition X-ray Imager

Concept Payload for:
 Feasibility (TRL 6)
 Mass
 Power
 Mechanical
 Costing

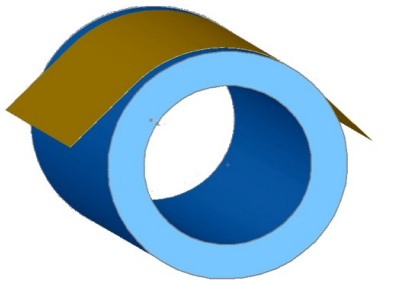
**NOT THE FINAL
 CONFIGURATION**

	Chandra	X-Ray Surveyor
Relative effective area (0.5 – 2 keV)	1 (HRMA + ACIS)	50
Angular resolution (50% power diam.)	0.5"	0.5"
4 Ms point source sensitivity (erg/s/cm ²)	5x10 ⁻¹⁸	3x10 ⁻¹⁹
Field of View with < 1" HPD (arcmin ²)	20	315
Spectral resolving power, R, for point sources	1000 (1 keV) 160 (6 keV)	5000 (0.2-1.2 keV) 1200 (6 keV)
Spatial scale for R>1000 of extended sources	N/A	1"
Wide FOV Imaging	16' x 16' (ACIS) 30' x 30' (HRC)	22' x 22'

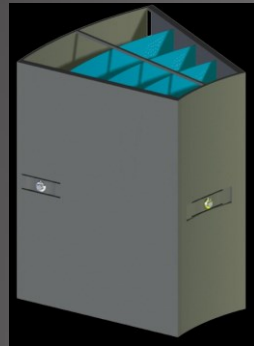
Light-Weight, Sub-Arcsecond Optics

- Build upon segmented optics approaches considered for Con-X, IXO, AXSIO
 - The segmented optics approach for IXO was progressing yet limited to ~10" angular resolution
- Follow multiple technology developments for the reflecting surfaces

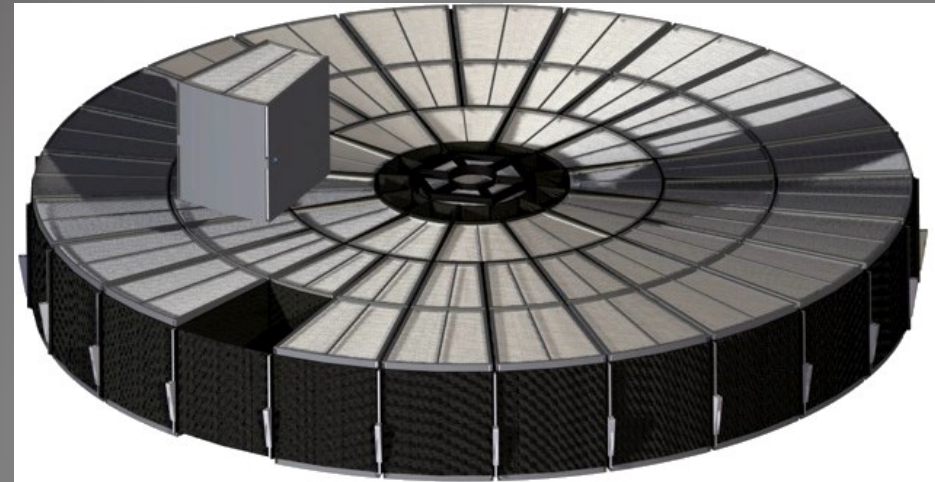
Fabrication



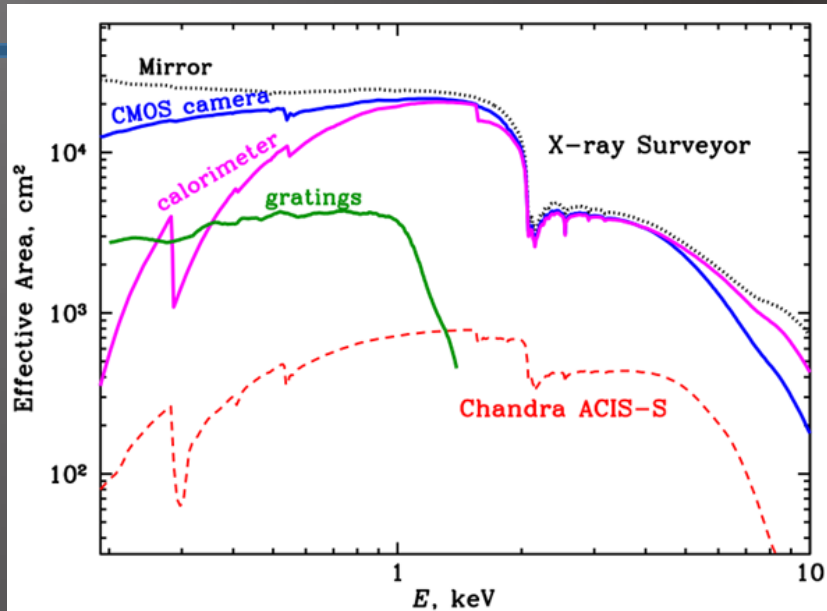
Alignment & Mounting



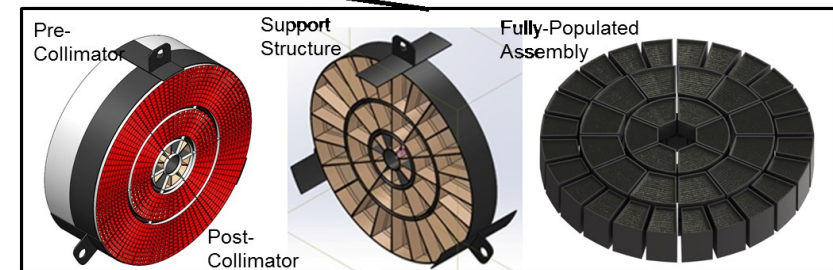
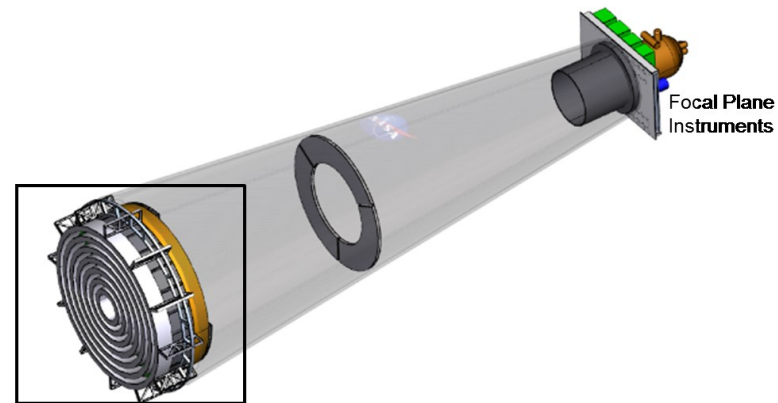
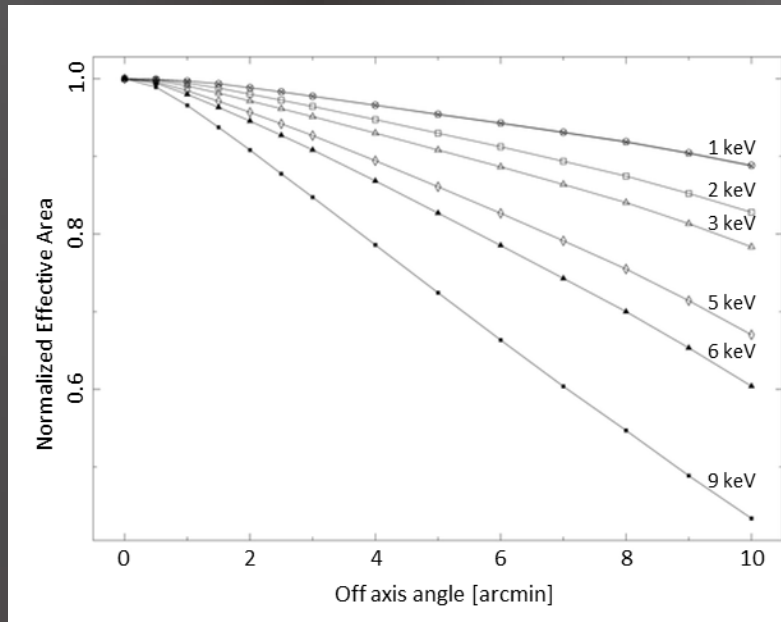
Integration



Optics – Specifications & Performance



- Wolter-Schwarzschild optical scheme
- 292 nested shells, segmented design
- 3m outer diameter
- 30x more effective area than Chandra HRMA
- (2.3 m² @ 1 keV)
- 4Msec survey limit $\sim 3 \times 10^{-19}$ erg/s/cm² (0.5–2 keV)

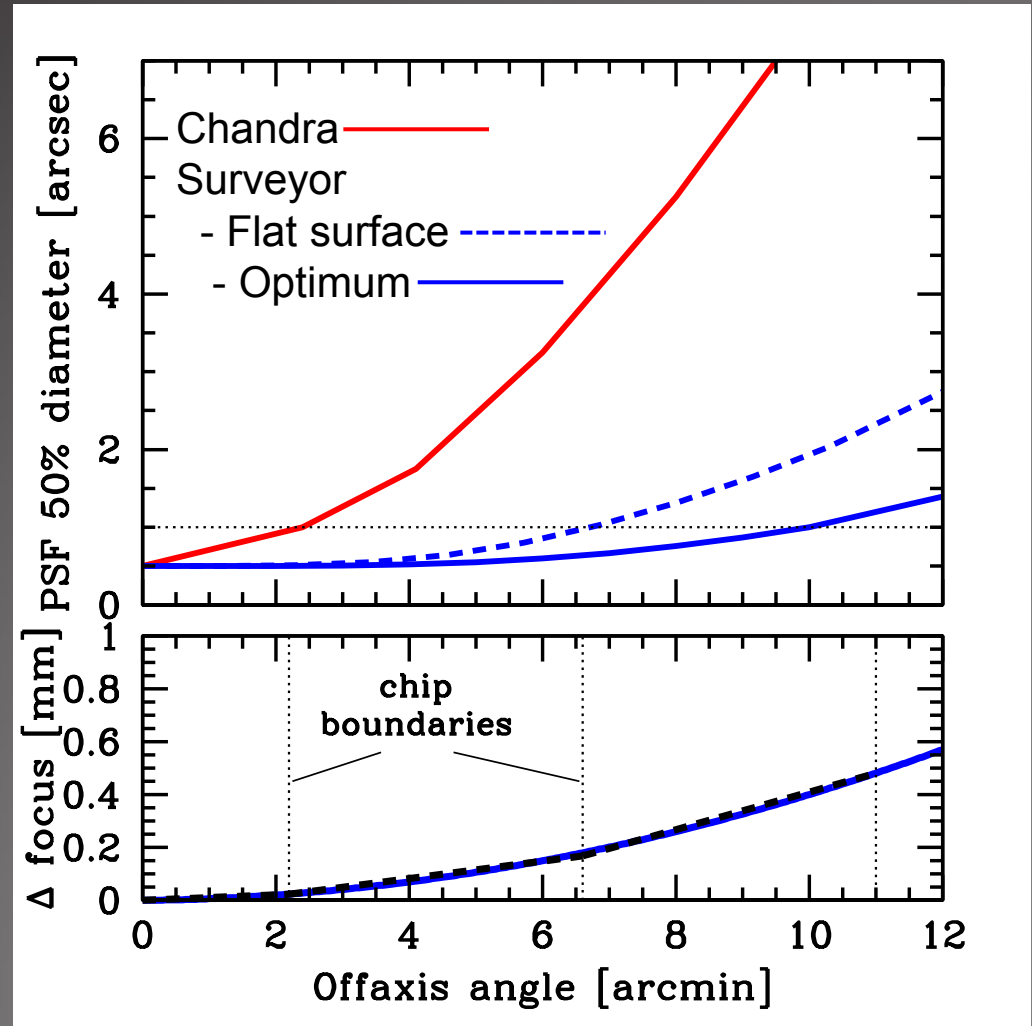


Angular resolution versus off-axis angle

$E < 2$ keV

Short segments and Wolter-Schwarzschild design yields excellent wide-field performance.

- 16x larger solid angle for sub-arcsecond imaging
- 800x higher survey speed at the CDFS limit



Obtaining Sub-Arcsecond Elements

APPROACHES

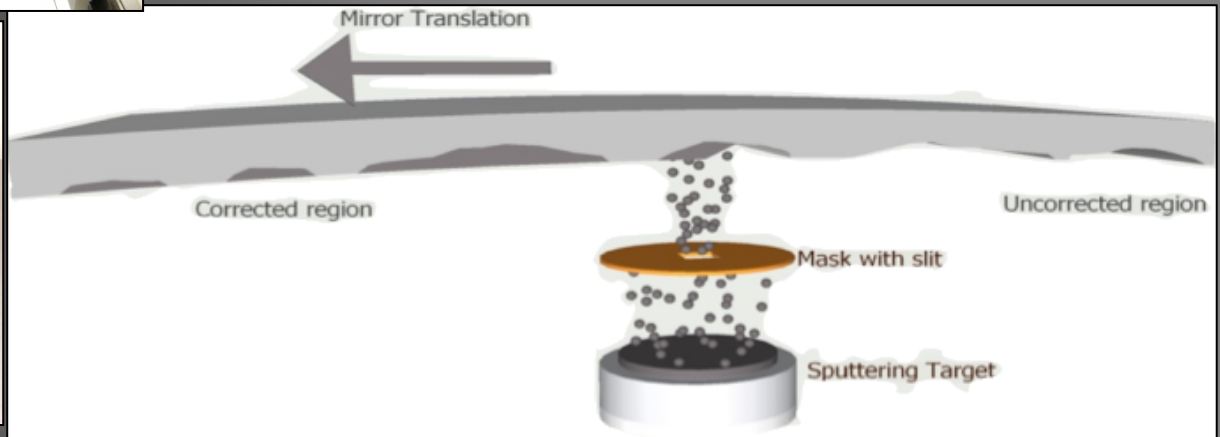
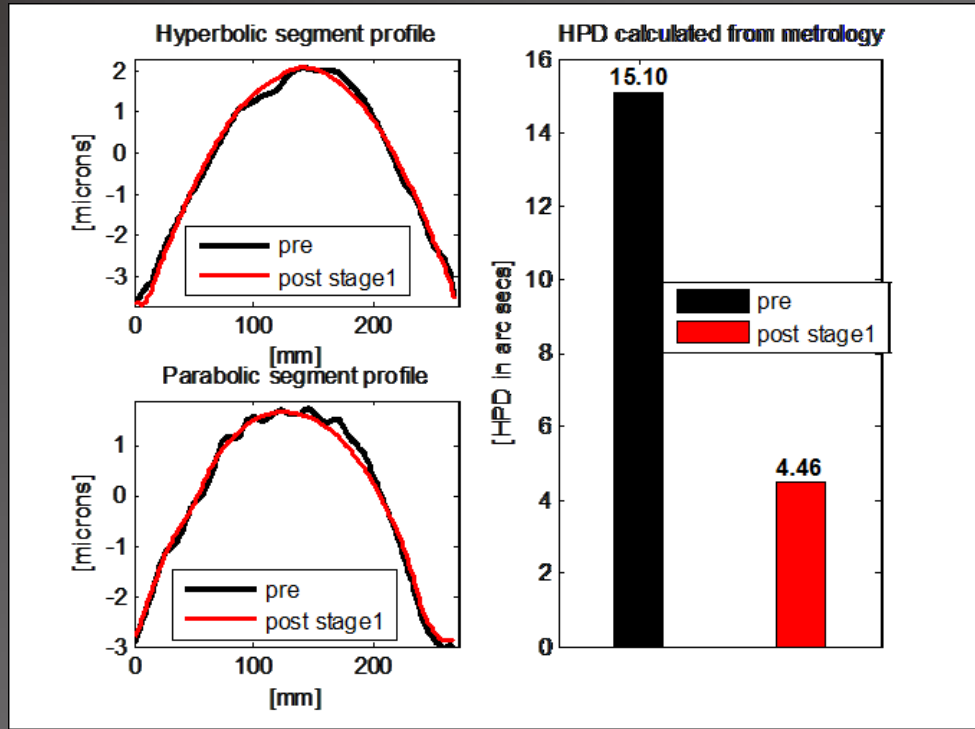
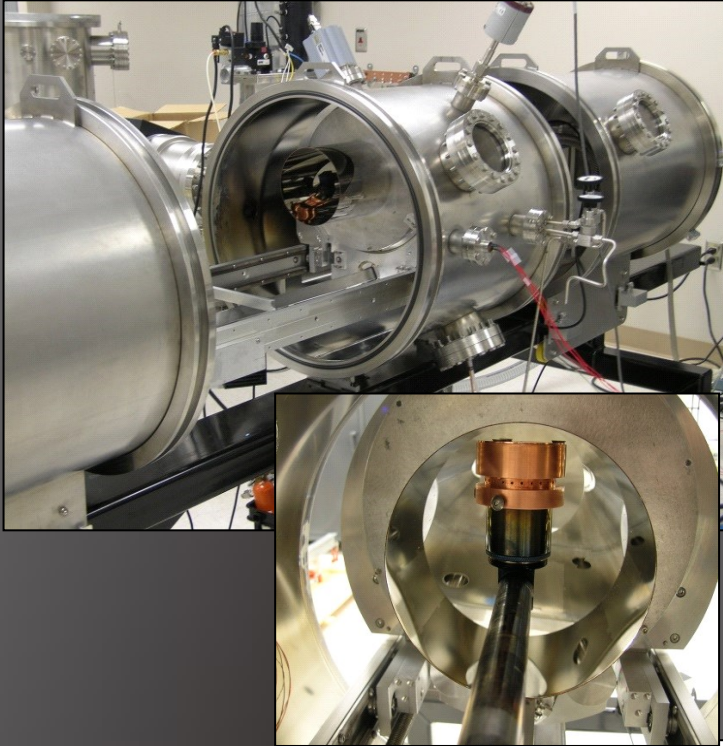
- Differential deposition
 - Fill in the valleys (MSFC/RXO)
- Adjustable optics
 - Piezoelectric film on the back surface (SAO/PSU)

ALSO WATCH

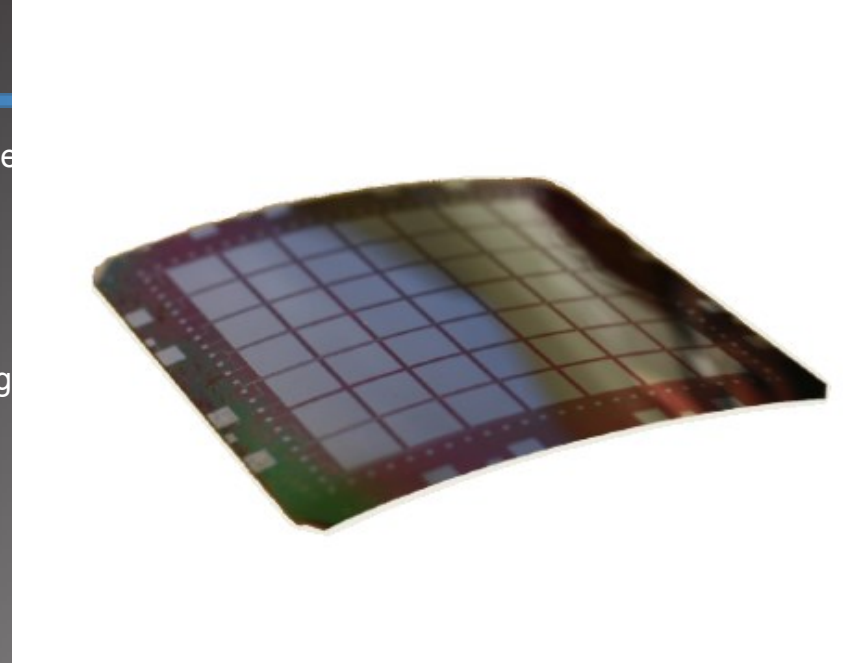
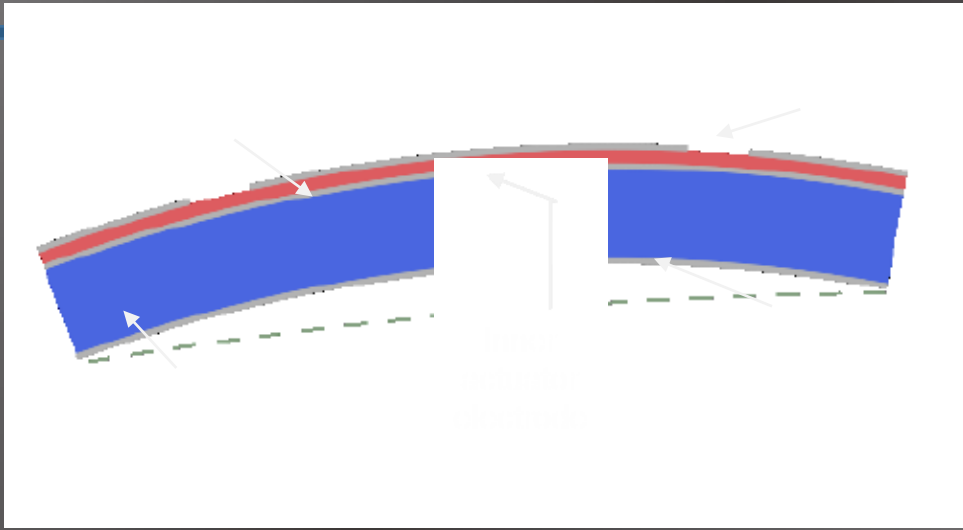
- Figuring, polishing, and slicing silicon into thin mirrors (GSFC)
- Magnetostrictive film on the back surface (Northwestern)
- Direct polishing of a variety of thin substrates (MSFC/Brera)
- Ion Implantation

SEE [Session 12: Differential Deposition](#)
[Session 13: Coating Stress Control](#)
[Session 14: Active Optics](#)
[Session 6: Slumped-glass Optics](#)
[Session 7: Other Mirror Technologies](#)

Differential Deposition (MSFC, RXO)

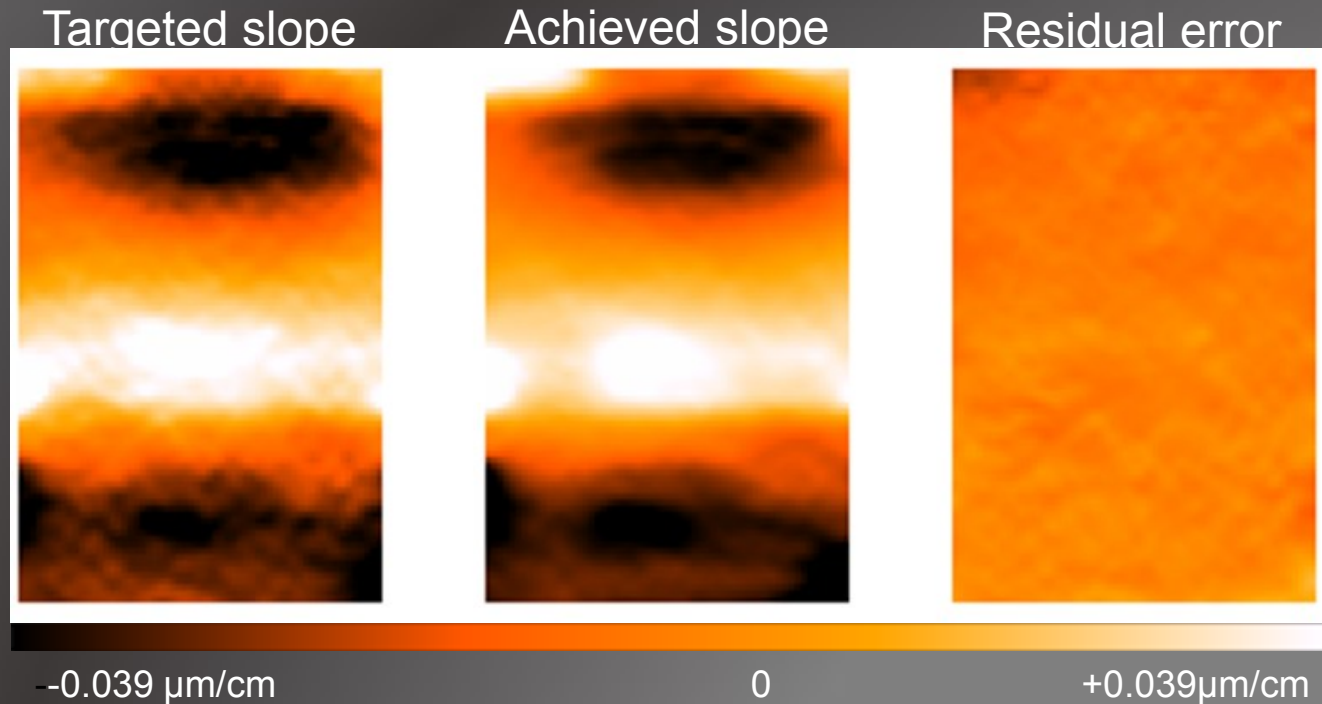


Adjustable Optics – Piezoelectric (SAO/PSU)



- Micron-level corrections induced with $<10V$ applied to 5–10 mm cells
- No reaction structure needed
- High yield — exceeds $>90\%$ in a university lab
- High uniformity — $\sim 5\%$ on curved segments demonstrated
- Uniform stress from deposition can be compensated by coating
- Row/column addressing
 - Implies on-orbit correction feasible
- 2D response of individual cells is a good match to that expected

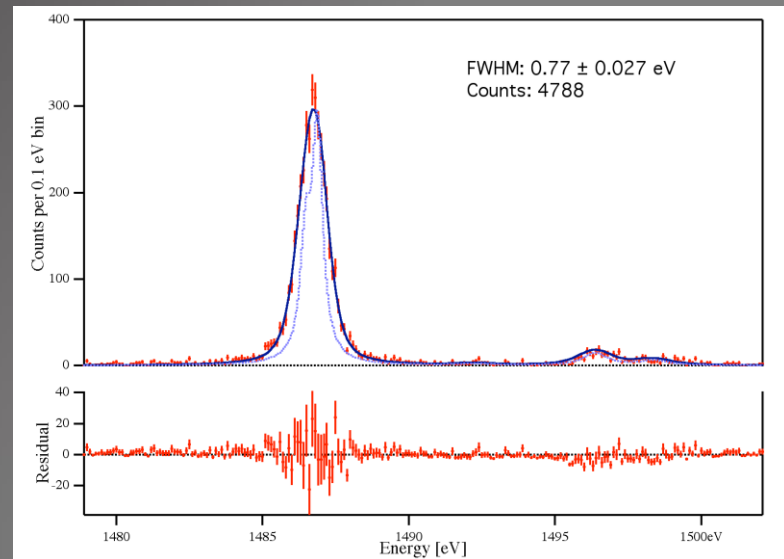
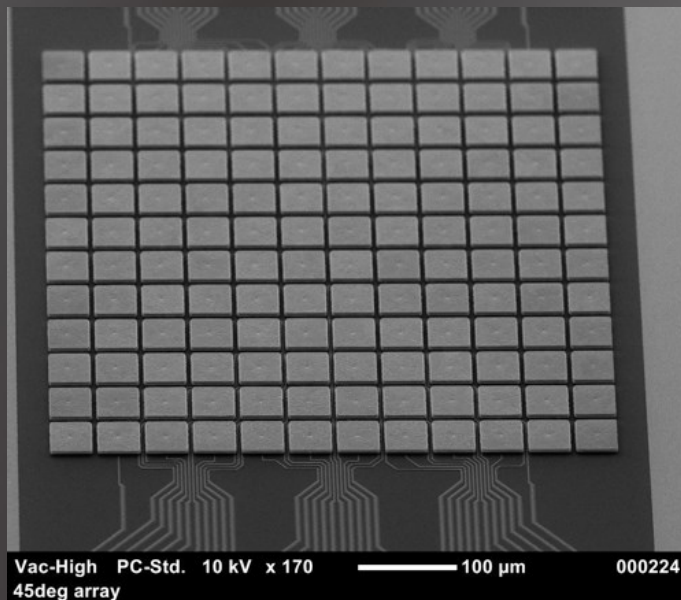
Adjustable Optics – Piezoelectric (SAO/PSU)



- 10 cm diameter flat mirror, 86 10×5 mm cells operated together to apply a deterministic figure in a 75×50 mm region
- Target correction (left) is approximated (middle) giving residuals shown on right
- Residuals converted to HPD for 2 reflections correspond to 3 arcseconds

X-ray Microcalorimeter Imaging Spectrometer (XMIS)

Parameter	Goal
Energy Range	0.2 – 10 keV
Spatial Resolution	1 arcsec
Field-of-View	5 arcmin x 5 arcmin (min)
Energy Resolution	< 5 eV
Count Rate Capability	< 1 c/s per pixel
Pixel Size / array size (10-m focal length)	50 μ m pixels / 300 x 300 pixel array

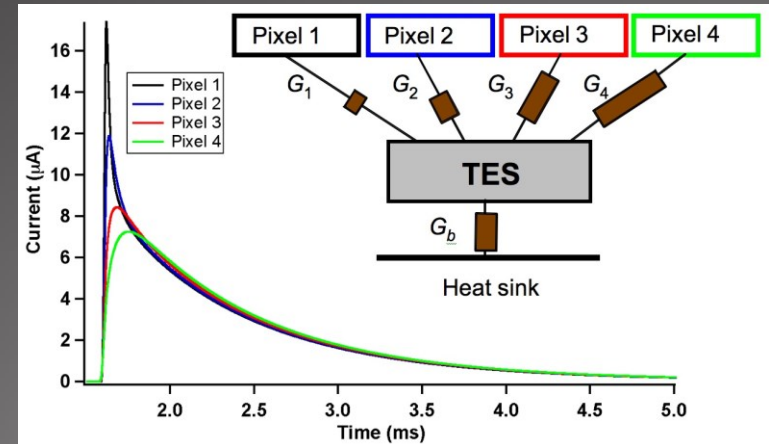
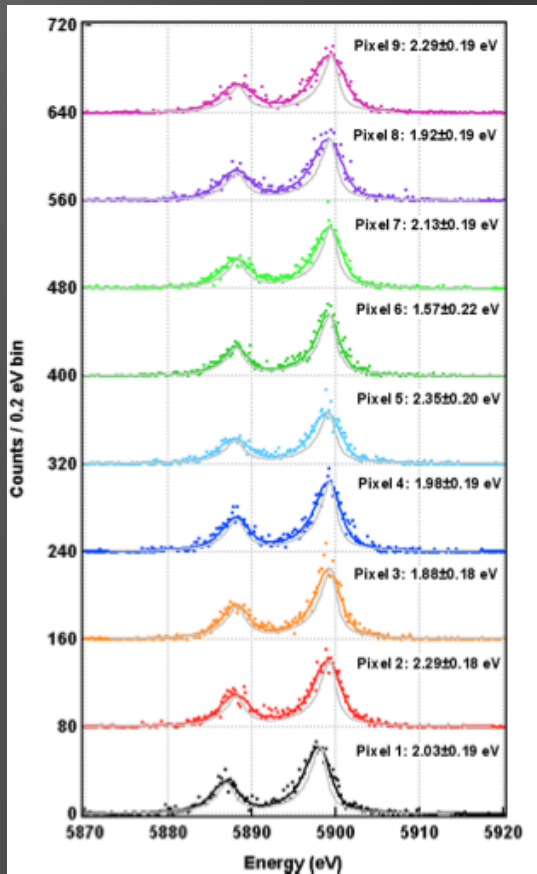


Challenge: Develop multiplexing approaches for achieving 10^5 pixel arrays

X-ray Microcalorimeter Imaging Spectrometer (XMIS)

Progress with respect to multiplexing:

- Transition Edge Sensors (TES) with SQUID readout.
- Multiple absorbers per one TES (“Hydra” design)

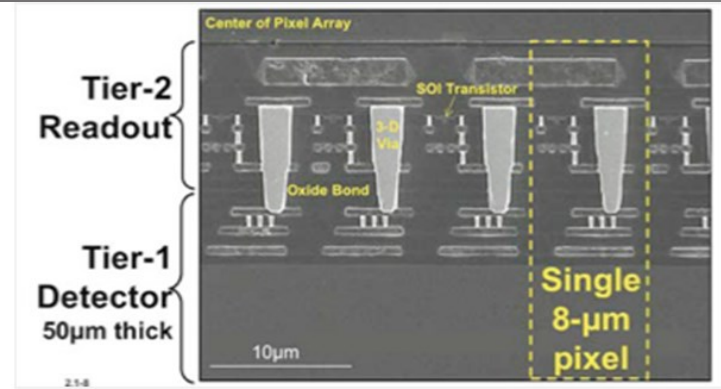
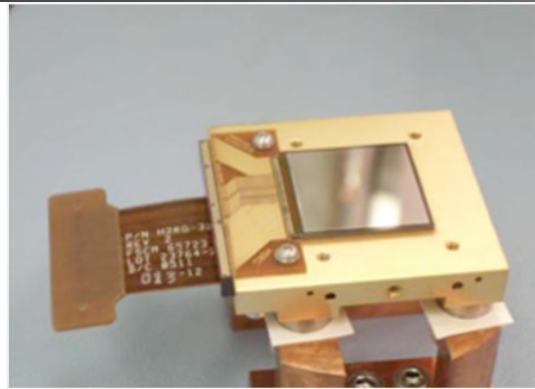
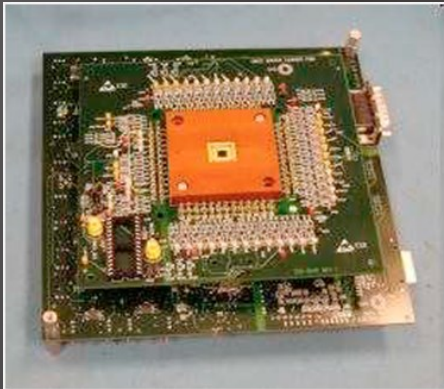


- Current lab results with 3×3 Hydra, $65 \mu m$ pixels on $75 \mu m$ pitch shows 2.4 eV resolution at 6 keV
- $\Delta E \sim N$ for $N \times N$ Hydras, so current results imply $\sim 5 \times 5$ Hydras with $50 \mu m$ pixels and $< 5 eV$ energy resolution are reachable

High Definition X-ray Imager

Parameter	Goal
Energy Range	0.2 – 10 keV
Field of View	22 arcmin x 22 arcmin
Energy Resolution	37 eV @ 0.3 keV, 120 eV @ 6 keV (FWHM)
Quantum Efficiency	> 90% (0.3-6 keV), > 10% (0.2-9 keV)
Pixel Size / Array Size	<16 μm (< 0.33 arcsec/pixel) / 4096 x 4096 (or equivalent)
Frame Rate	> 100 frames/s (full frame) > 10000 frames/s (windowed region)
Read Noise	< 4e ⁻ rms

All have been demonstrated individually



Challenges: Develop sensor package that meets all requirements, and approximates the optimal focal surface

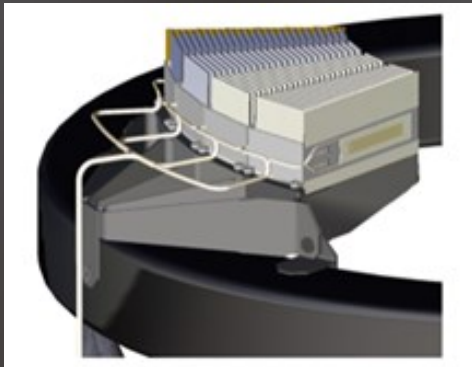
SEE Session 3: Solid State Detectors, Paper 9601-10, 9601-11, 9601-12
Session 2: X-ray and Optical Systems, paper 9591-4

Grating Spectrometer

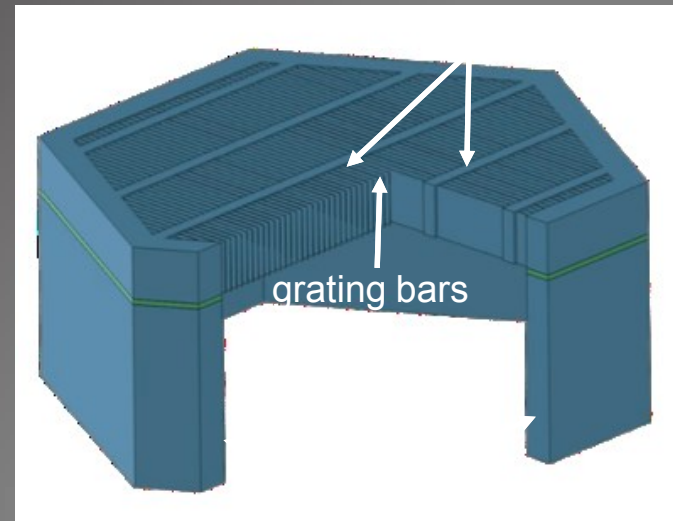
- Resolving power = 5000 & effective area = 4000 cm²
- Energy range 0.2 – 2.0 keV

Blazed Off-Plane
Reflection gratings

(Univ. of Iowa)

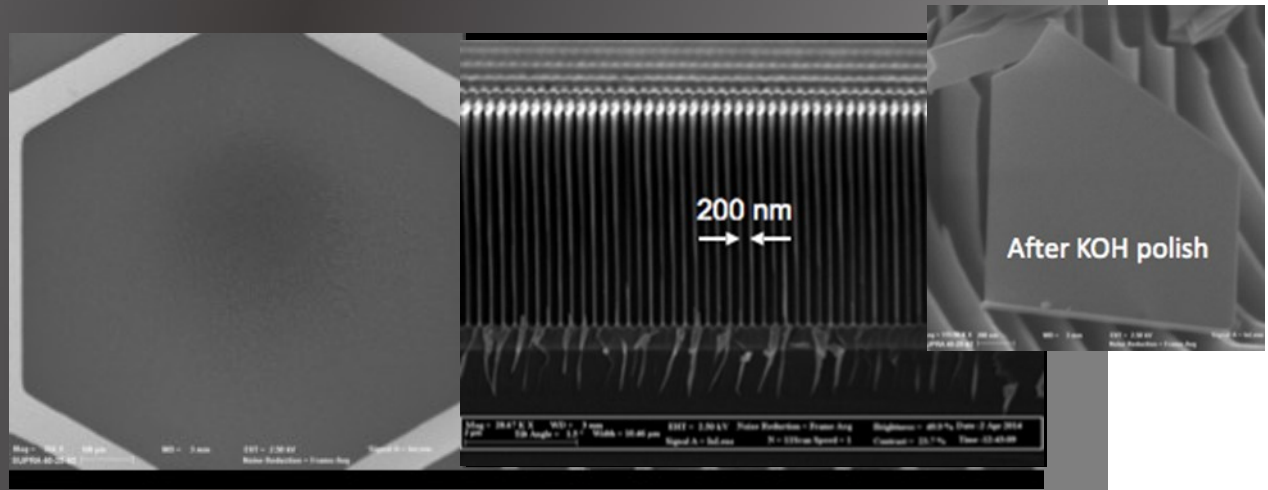
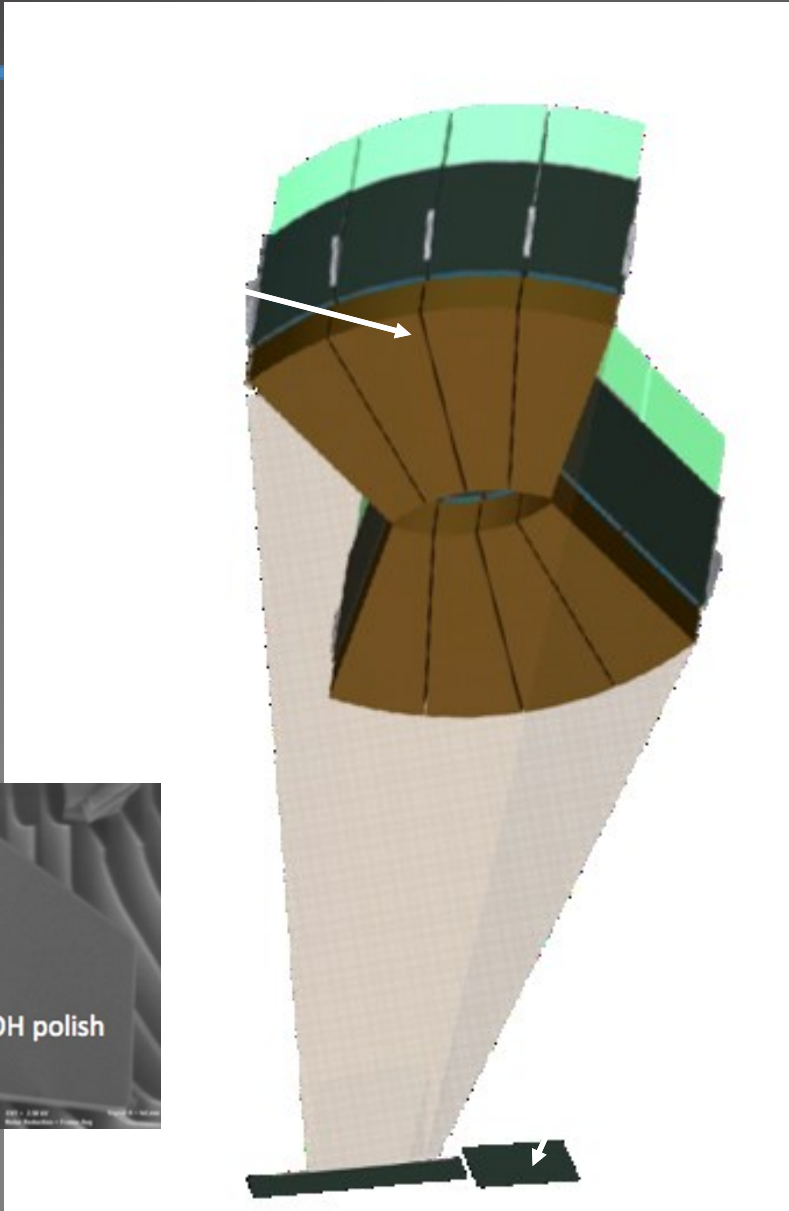
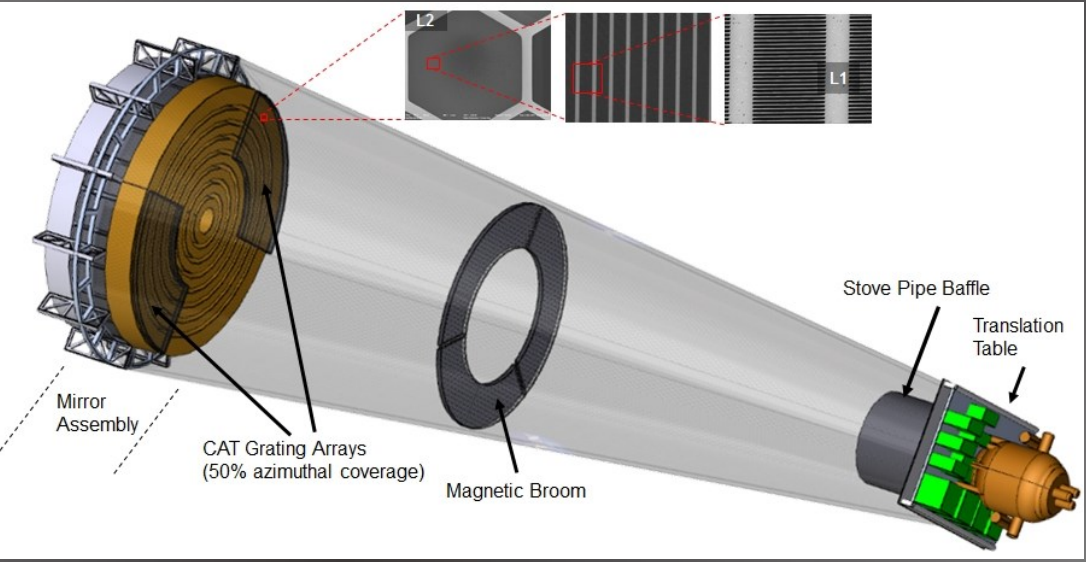


Critical Angle Transmission (CAT) gratings
(MIT)



Challenges: improving yield, developing efficient assembly processes, and improving efficiency

Critical Angle Transmission Gratings (MIT)



Costing: Surveyor's *Chandra* Heritage

Identical requirements

- Angular resolution
- Focal length
- Pointing accuracy
- Pointing stability
- Dithering to average response over pixels and avoid gaps
- Aspect system & fiducial light system
- Contamination requirements and control
- Translation and focus adjust capability for the instruments

- Shielding for X-rays not passing through the optics
- Mission operations and data processing

Somewhat different requirements

- Magnetic broom (larger magnets)
- Pre and post telescope doors (larger)
- Telescope diameter (larger)
- Grating insertion mechanisms (similar)

No S/C technology challenges

Cost Estimates

- All elements of the Mission are assumed to be at TRL 6 or better prior to phase B
- Atlas V-551 launch vehicle (or equivalent)
- L2 halo orbit & 5 year lifetime
- Expendables sized for 20 years
- Mass and power margins set to 30%
- Cost margins set to 35% except for instruments
- Instruments costed at 70%-confidence using NASA Instrument Cost Model (NICM)
- Costs in FY 15\$

Spacecraft	\$1,650M
X-ray Telescope Assembly	\$ 489M
Scientific Instruments	\$ 377M
Pre-Launch Operations, Planning & Support	\$ 196M
Launch Vehicle (Atlas 551)	\$ 240M
Total	\$2,952M

Mission Operations	\$45M/yr
Grants	\$25M/yr

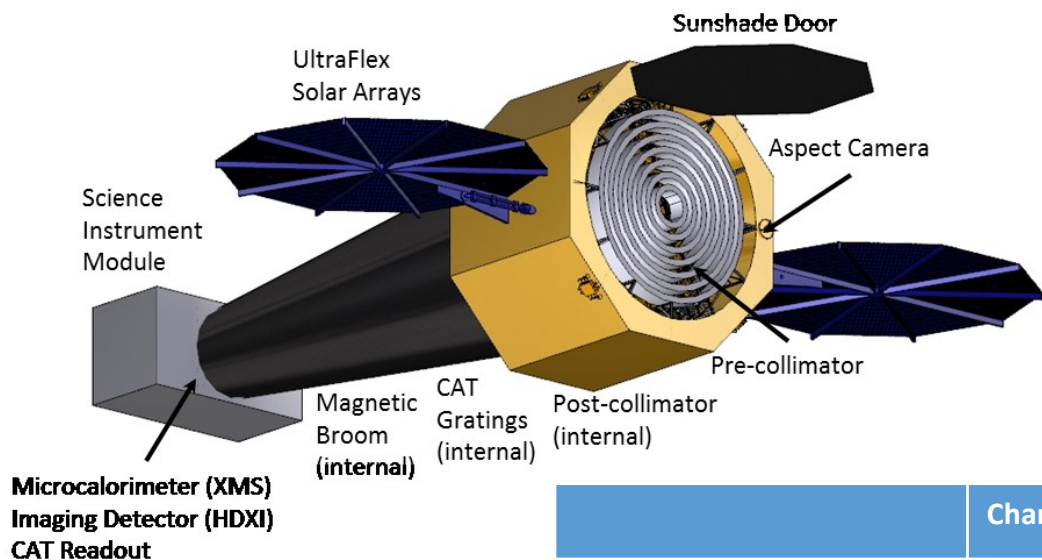
-
- BACKUP SLIDES

Cost Estimates

Ground Rules and Assumptions - 2

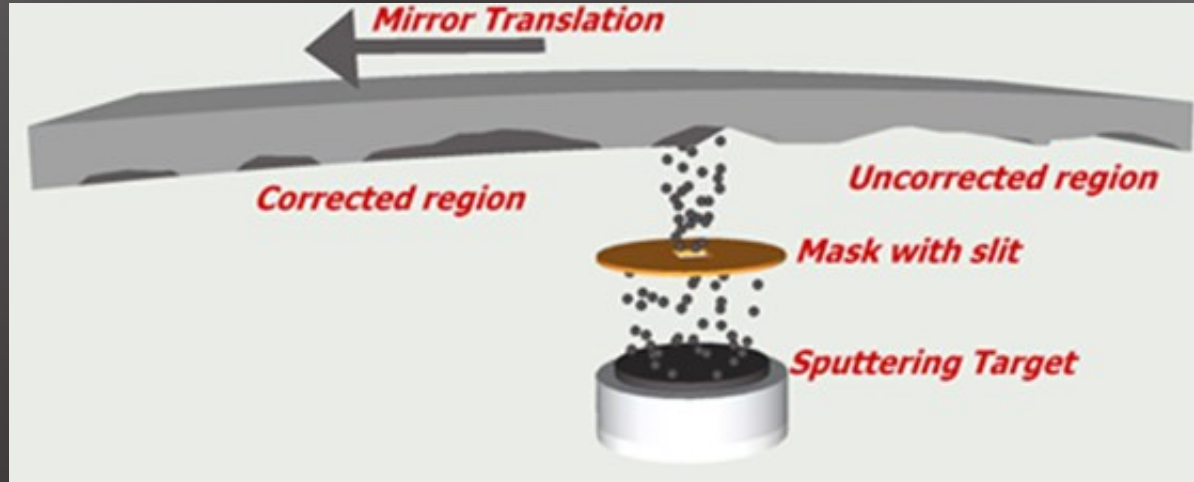
- Individual S/C subsystems contain all hardware, engineering and manufacturing costs related to the subsystem
- No single point failures
- Contractor fee and NASA program support are 10% each
- Integration with the launch vehicle is 5%
- Costs for the optics assembly is a bottoms up input from the MSFC/SAO Team
- Aspect camera based on a ROM quote from Ball Aerospace

Optics & Instruments



	Chandra	X-Ray Surveyor	Athena
Relative effective area (0.5 – 2 keV)	1	50	50
Angular resolution (50% power diameter)	0.5"	0.5"	5"
4 Ms point source sensitivity (erg/s/cm ²)	5x10 ⁻¹⁸	3x10 ⁻¹⁹ (flux limit is 10 ⁻¹⁹ erg/s/cm ² for targeted objects)	2.5x10 ⁻¹⁷ (lim. by source confusion)
Field of View with < 1" HPD (arcmin ²)	20	315	N/A
Spectral resolving power, R, for point sources	1000 (1 keV) 160 (6 keV)	5000 (0.2-1.2 keV) 1200 (6 keV)	200 (0.5 keV) 2400 (6 keV)
Spatial scale for R>1000 of extended sources	N/A	1"	5"
Wide FOV Imaging	16' x 16' (ACIS) 30' x 30' (HRC)	22' x 22'	40' x 40'

Differential Deposition (MSFC, RXO)



7.1" to 2.9" (HPD – 2 reflections) in two passes

