

ERRATUM: “CORRELATIONS AT LARGE SCALES AND THE ONSET OF TURBULENCE IN THE FAST SOLAR WIND” (2013, ApJ, 778, 177)

R. T. WICKS¹, D. A. ROBERTS¹, A. MALLET², A. A. SCHEKOCHIHIN², T. S. HORBURY³, AND C. H. K. CHEN⁴

¹ Code 672, NASA Goddard Space Flight Center, Greenbelt, MD, USA; robert.t.wicks@nasa.gov

² Rudolf Peierls Centre for Theoretical Physics, University of Oxford, Oxford, OX1 3NP, UK

³ Space and Atmospheric Physics Group, Imperial College London, London, SW7 2AZ, UK

⁴ Space Sciences Laboratory, University of California, Berkeley, CA 94720, USA

Received 2014 January 17; published 2014 February 4

Online-only material: color figure

Due to an error at the publisher, the color bars in Figure 5 were displayed incorrectly. The correct version of Figure 5 is shown here.

IOP Publishing sincerely regrets this error.

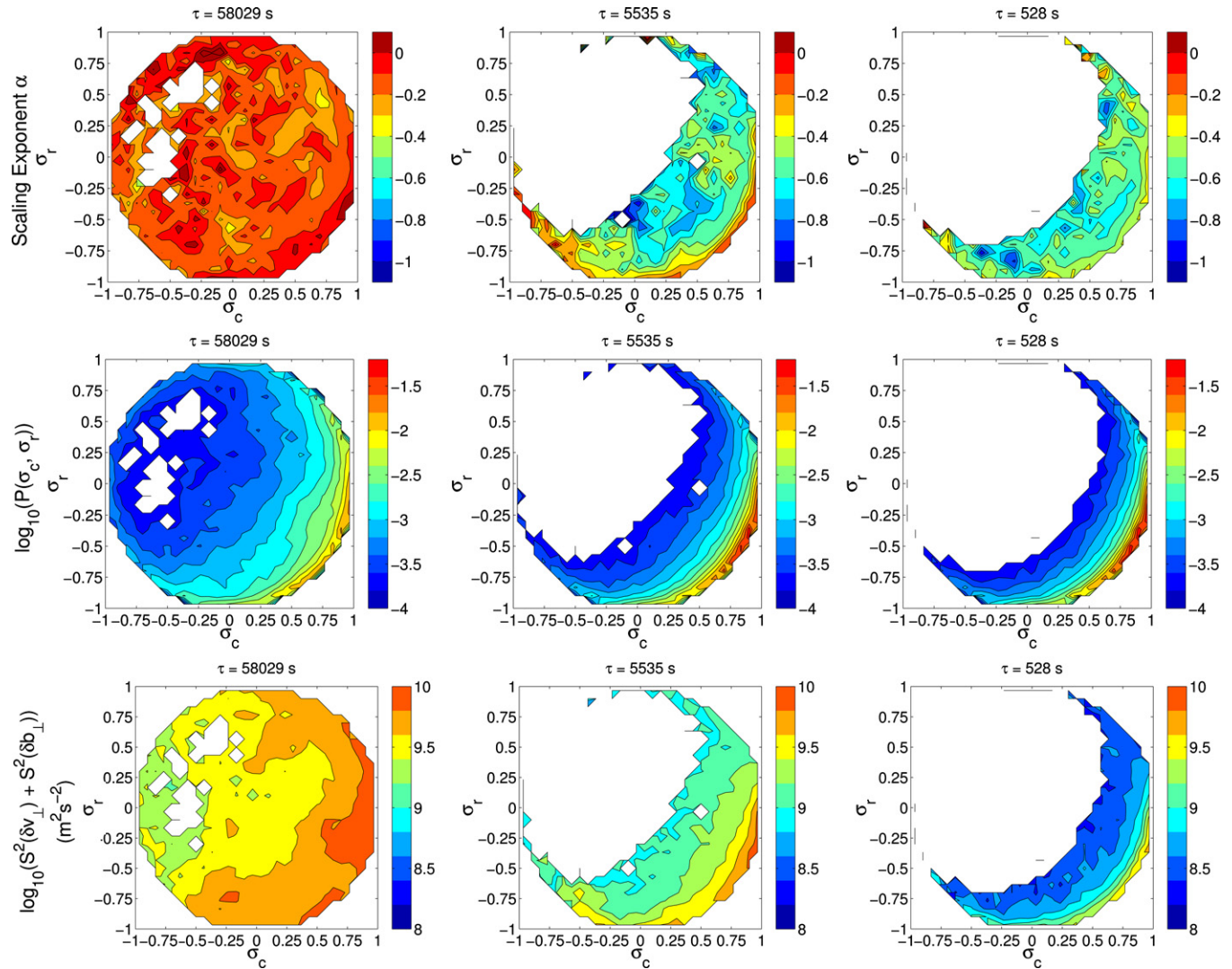


Figure 5. Evolution of different properties of structure functions from the Alfvén interaction time T_A , through the $1/f$ range, and into the inertial range plotted in the (σ_c, σ_r) plane. The top row shows the joint probability distribution of σ_c and σ_r . The second row shows the total amplitude in fluctuations, $S_2(\delta v_\perp) + S_2(\delta b_\perp)$. The third row shows the scaling exponent of the structure functions, $S_2 \propto f^\alpha$, measured over five consecutive points centered on the scale τ of each panel. The three columns correspond to the three timescales indicated by the arrows in Figures 2 and 4. The middle column is for the same τ as Figure 3.

(A color version of this figure is available in the online journal.)