

Classification: BIOLOGICAL SCIENCES: Applied Biological Sciences

Engineering the cell wall by reducing de-methyl-esterified homogalacturonan improves saccharification of plant tissues for bioconversion

Vincenzo Lionetti^{a, 1}, Fedra Francocci^{a, 1}, Simone Ferrari^{a, 1}, Chiara Volpi^{b, 1}, Daniela Bellincampi^{a, 1}, Roberta Galletti^a, Renato D'Ovidio^b, Giulia De Lorenzo^a and Felice Cervone^{a, 2}

^aIstituto Pasteur Fondazione Cenci Bolognetti, Dipartimento di Biologia Vegetale, Università di Roma “Sapienza”, Piazzale Aldo Moro 5, 00185 Roma, Italy.

^bDipartimento di Agrobiologia e Agrochimica, Università della Tuscia, Via San Camillo de Lellis, s.n.c., 01100 Viterbo, Italy

¹These authors equally contributed to this work.

²To whom correspondence may be addressed.

Author contributions: V.L., F.F., S.F., D.B., G.D.L., R.D. and F.C. designed research; V.L., F.F., S.F. and C.V. performed research; R.G. contributed new reagents/analytical tools; V.L., F.F., S.F., D.B., R.D., G.D.L. and F.C. analyzed data; and S.F., D.B. and F.C. wrote the manuscript.

Corresponding author: Felice Cervone, Dipartimento di Biologia Vegetale, Università di Roma “Sapienza”, Piazzale Aldo Moro 5, 00185 Roma, Italy. E-mail: felice.cervone@uniroma1.it. Phone: +39-06-49912517; fax: +39-06-49912446.

Manuscript information: 17 pages, 5 figures.

ABSTRACT

Plant cell walls represent an abundant, renewable source of biofuel and other useful products. The major bottleneck for the industrial scale-up of their conversion to simple sugars (saccharification), to be subsequently converted by microorganisms into ethanol or other products, is their recalcitrance to enzymatic saccharification. We investigated whether the structure of pectin that embeds the cellulose-hemicellulose network affects the exposure of cellulose to enzymes and consequently the process of saccharification. Reduction of de-methyl-esterified homogalacturonan (HGA) in *Arabidopsis* plants through the expression of a fungal polygalacturonase (PG) or an inhibitor of pectin methylesterase (PMEI) increased the efficiency of enzymatic saccharification. The improved enzymatic saccharification efficiency observed in transformed plants could also reduce the need for acid pretreatment. Similar results were obtained in PG-expressing tobacco plants and in PMEI-expressing wheat plants, indicating that reduction of de-methyl-esterified HGA may be used in crop species to facilitate the process of biomass saccharification.

\body

INTRODUCTION

Plant biomass has been a source of energy for most part of human history and, due to the increasing demand for renewable materials and industrial products, is re-considered today as a possible strategic resource. Plant cell walls comprise a significant proportion of the lignocellulosic biomass (1) and are a potentially abundant substrate for bioconversion to ethanol and other industrial products (2). They are composed of a heterogeneous polysaccharidic matrix associated with components like lignin and proteins. Saccharification, a key process for the production of ethanol, is the degradation of the wall polysaccharides into fermentable sugars. Enzymatic hydrolysis is the most promising and environmentally friendly technology available for saccharification (3, 4), but the recalcitrance of cell walls to hydrolysis is the major bottleneck for the industrial scale-up of this process (2). Thermochemical pretreatments using high temperature, toxic acids, peroxides and ammonia, often along with some form of mechanical disruption, are currently required to make biomass accessible to cell wall-degrading enzymes and represent up to 30% of the cost of biofuel production (2).

Modification of the cell wall structure may be useful for reducing pretreatments and improving the overall saccharification process. For example, it has been shown that reducing the lignin content in transgenic alfalfa plants improves saccharification efficiency, although it can reduce biomass yield (5). A cell wall component that, particularly in dicots, is critical for tissue integrity and accessibility to cell wall-degrading enzymes is the cohesive pectin matrix embedding the cellulose-hemicellulose network, which in turn contains the major strength-conferring elements. It is well known that intermolecular bonds of pectin, mediated by acidic homogalacturonan (HGA), influence wall plasticity (6) and cell adhesion (7). HGA is synthesized and secreted as a highly methyl-esterified polymer (8) and is de-methyl-esterified *in muro* by pectin methylesterases (PMEs). These enzymes produce long stretches of free carboxylic residues that are necessary for Ca^{2+} -mediated crosslinks of HGA into rigid “egg box” structures (9) and, in lignified tissues, could

enhance the formation of benzyl-uronate crosslinks (10). Here we show that plants with a reduced content of de-methyl-esterified HGA can be obtained by expressing *in planta* a fungal polygalacturonase (PG) or by overexpressing plant inhibitors of endogenous PMEs. We also show that these modified plants exhibit an increased efficiency of enzymatic saccharification, thus reducing the need for thermochemical pretreatments.

RESULTS AND DISCUSSION

To test whether the content of acidic HGA and/or the methyl-esterification status of HGA affects the susceptibility of plant cell walls to enzymatic saccharification, we analyzed *Arabidopsis* plants expressing a mutated version of the *Aspergillus niger pgaII* gene encoding a PG with reduced specific activity (PG plants) (11, 12), and plants overexpressing AtPMEI-2, an endogenous inhibitor of PMEs (PMEI plants) (13, 14). Leaf material from untransformed plants (WT), from two independent lines (PG26 and PG57) with high levels of PG expression, from one line (PG106) with low levels of PG expression (Fig. S1), from two independent lines (PMEI7 and PMEI9) expressing high levels of PMEI, and from one line (PMEI15) with low levels of PMEI (13) was treated with Celluclast 1.5 L, a commercial preparation which contains mostly cellulose-degrading activities. Large differences were observed in the enzymatic saccharification efficiency (reducing sugars released as a percentage of total sugars in the tissue) among the various lines. After 24 h of incubation, saccharification efficiency in the two independent lines with high levels of PG expression was up to 2-fold higher than in either wild-type (WT) or PG106 plants, whereas it was about 60% higher in highly expressing PMEI lines than in the respective control lines (Fig. 1A and B). Notably, enzymatic treatment of leaves from lines with higher saccharification efficiency also showed a remarkable tissue maceration (Fig. 1C). No significant tissue maceration or release of sugars were detected when leaf material from both transformed and control plants was incubated in the absence of enzymes, indicating that the expression of *pgaII* or AtPMEI-2 does not *per se* determine disassembly of the tissue and/or saccharification, but rather promotes the ability of

exogenous enzymes to hydrolyze the substrate in fresh tissues. No significant differences in the amount of total sugars, of alcohol insoluble solid (AIS) and of starch could be detected in leaf material of WT, PG or PME1 plants with high levels of expression of the transgene (Table S1). Sugars present in the enzymatic digests of Arabidopsis leaf material treated with Celluclast comprised glucose and low amounts of xylose (Table S2). The increased level of glucose but not xylose in the digests of transgenic plants, as compared to WT plants, suggests that the expression of PG or PME1 mostly increases the accessibility of cellulose to hydrolytic enzymes. Noteworthy, no significant differences in enzymatic saccharification efficiency were observed when WT, PG and PME1 leaves were pretreated with dilute acid (1.3% sulphuric acid) at 110°C, a treatment that is known to remove mostly cell wall matrix components and to increase cellulose susceptibility to enzymes (15, 16) (Fig. 1D). We concluded that high expression of PGs or PME1s in plants may reduce the need of acid pretreatments in biomass bioconversion.

Taken together, the above results indicate that cell wall recalcitrance is reduced in plants expressing PG or PME1, likely due to a modification of pectin composition and/or architecture. Levels of de-methyl-esterified HGA regions of Arabidopsis plants expressing PG and PME1 were therefore investigated in chelating agent-soluble solid (ChASS) fractions, which contain mainly pectin, by immunodot assay, using the monoclonal antibodies PAM1, which specifically recognizes large de-methyl-esterified blocks of HGA (at least 30 continuous GalA units) (17), and JIM5, which binds pectin with a low degree of methyl-esterification (18). This analysis revealed that Arabidopsis plants expressing high levels of PG or PME1 have lower levels of PAM1-binding epitopes, and therefore a reduced quantity of long stretches of unesterified HGA, than WT plants or plants with low transgene expression (Fig. 2A and B). JIM5-binding epitopes were also less abundant in plants highly expressing PG and PME1 as compared with WT plants or plants with low transgene expression, confirming a higher degree of HGA methyl-esterification in PG and PME1 plants (Fig. 2A and B).

After proving the concept that *Arabidopsis* plants expressing PG or PME1 are more susceptible to enzymatic saccharification, we tested whether the expression of these proteins also increases saccharification efficiency in crop species more suitable for industrial bioconversion. Indeed, two tobacco lines expressing high levels of pgaII (PG7 and PG16), previously described as exhibiting a reduced content of de-methyl-esterified blocks of HGA (11), showed a three times higher saccharification efficiency than WT plants (Fig. 3A) and increased levels of glucose in the hydrolysate (Table S2), yet having a similar content of total sugars and AIS per leaf fresh weight (Table S1). Commelinid monocots, which include most energy crops currently used or under development, like switchgrass (*Panicum virgatum*), Miscanthus (*Miscanthus × giganteus*), sorghum (*Sorghum bicolor*) and maize (*Zea mays*), have a lower content of HGA as compared to dicots (19). Therefore, we tested whether transformation with a PME1 could also affect saccharification in wheat (*Triticum durum* L. cv. Svevo), a commelinid grass. We used a kiwifruit (*Actinia chinensis*) PME1 isoform (AcPME1) (20) which has stronger inhibitory activity on endogenous wheat PME1s as compared to *Arabidopsis* PME1s: 15 ng of AcPME1 or AtPME1-2 resulted in 100% or 75% inhibition of the PME1 activity present in 9 µg of wheat leaf total proteins, respectively. Two T2 independent wheat lines (AcPME1151 and AcPME169) expressing high levels of AcPME1 and showing about 90% reduction of endogenous PME1 activity (Fig. S2) were selected. Consistently, PAM1 and JIM5-binding epitopes were much less abundant in the ChASS fractions of plants expressing AcPME1 compared to WT plants, indicating a lower level of de-esterified HGA in pectins (Fig. 2C). As in *Arabidopsis* PME1 plants, no significant differences in total sugar, AIS fraction and starch per leaf fresh weight were observed between transformed and WT plants (Table S1). Treatment of wheat leaf tissues with Celluclast alone resulted in a low level of soluble sugars released and no significant differences in the saccharification efficiency between WT and transgenic plants; instead, when Celluclast was used in combination with Macerozyme, a commercial cocktail of cell wall-degrading enzymes reported to facilitate cellulase-mediated hydrolysis of cellulose in tissues of monocots such as corn cobs and stover (2, 21), a 35-40% increase in saccharification

efficiency was observed in transgenic plants as compared with WT plants (Fig. 3B). Determination of glucose and xylose in the enzymatic hydrolysates indicated a greater release of both monosaccharides from PME1 expressing plants as compared with the control WT plants (Table S2) suggesting that both cellulose and hemicellulose are more easily digested in transformed plants. As in the case of Arabidopsis, a dilute acid pretreatment caused in WT plants a degree of saccharification similar to that observed in PME1 plants without pretreatment (Fig. 3C).

We then investigated if the increased degree of saccharification of PG and PME1 plants could also be observed in stems, which are more lignified tissues with secondary walls, since stem tissues are largely utilised for biofuel production (15). As expected, the saccharification efficiency of stem material was lower than that observed in leaves; however, Arabidopsis PG and PME1 stems treated with Celluclast showed a 50% increase of saccharification, compared to WT plants (Fig. 4A). Similarly, saccharification efficiency of wheat PME1 stems treated with Celluclast and Macerozyme was about 2.5 times higher than in WT stems (Fig. 4B). In addition, dilute acid pretreatment of wheat stems did not result in significantly different release of total reducing sugars after enzymatic saccharification of the residual PME1 and WT biomass (Fig. 4C).

Our results show that the recalcitrance of cell walls to enzymatic saccharification is reduced in leaves and stems of both dicot and monocot plants expressing PGs and PME1s. It is likely that a reduced content of “egg-box” structures or other crosslinks mediated by de-methyl-esterified HGA is responsible for the accessibility of cellulases and hemicellulases to their substrates, resulting in increased saccharification efficiency. However, in the case of PG plants, high expression of the transgene also causes a reduced biomass yield both in tobacco (11) and in Arabidopsis (Table 1). It is conceivable that the level to which the content of de-methyl-esterified HGA may be reduced without affecting plant performance and tissue integrity is critical to develop crops with improved saccharification. Work is in progress to establish a system to control the ectopic PG activity and to minimize the effect of its activity on biomass production. This may involve the expression of PG under inducible or developmentally-regulated promoters at the end of the plant life cycle, or co-

expression with specific inhibitors. Instead, Arabidopsis plants overexpressing PME1 show enhanced growth (Fig. 5A) and a higher vegetative biomass yield, with an increase of about 80% and 68% in rosette leaf fresh weight and dry matter, respectively, compared to WT plants (Table 1). The increase in biomass yield of PME1 plants may be due to an enhanced cell expansion, as suggested by previous results showing an increased root cell elongation (13) and by comparison of cell size of transverse sections of hypocotyls of etiolated WT and PME1 seedlings (Fig. 5B). It has been suggested that higher levels of HGA methyl-esterification without a reduction of total HGA promote cell expansion and positively affect growth of dicot plants (13, 22). In contrast to Arabidopsis, no significant difference in biomass yield was observed between control and wheat plants expressing PME1 (Table 1), suggesting that HGA methyl-esterification has a minor impact on the biomass of monocots.

In conclusion, we suggest that PGs and, more in general, other HGA degrading enzymes such as pectate lyases may be used to reduce the acidic HGA content in crop plants as well as in energy plants and make them a better substrate for the production of biofuel and other commercial products. The technology described in this paper is in agreement with our vision of the cell wall architecture and with the concept that HGA-mediated cross links act as a glue for other cell wall polysaccharides. Our results are also in agreement with our knowledge of the mode of action of soft rot pathogenic microorganisms and, more in general, of those microorganisms that, by growing on plant tissues, need to saccharify the cell wall polysaccharides to use them as nutrients. These microorganisms produce pectic enzymes before other cell wall degrading enzymes and their action is a prerequisite for the exposure of the plant polysaccharides to the hydrolytic machinery of the pathogens. However, the use of microbial pectic enzymes has to be further developed and implemented, because their expression *in planta* without any kind of control is detrimental for plant growth and tissue integrity (11). On the other hand, inhibitors of PME may be used to the same purpose since their expression may reduce the stretches of acidic HGA in crop and energy plants. This technology, unlike that involving PGs, is readily available for application purposes, because

plants overexpressing PME1 have a normal growth and, in the case of Arabidopsis, exhibit even an increased biomass. Furthermore, since plants overexpressing PME1 display a higher resistance to microbial pathogens (13, 23), crops with increased HGA methyl-esterification may also possess this additional desirable trait. Independently of the kind of genes that are used, we have shown that a reduction of the acidic HGA content ultimately determines an increased cell wall susceptibility to hydrolytic degradation. As an alternative to genetic transformation, it is conceivable that either natural variability or variability induced by mutagenesis can be exploited to isolate genotypes with low levels of unesterified HGA. For example, we have shown that the antibody PAM1 can be used as a tool to detect mutants with a low content of unesterified HGA. In addition, it may be useful to develop a high-throughput screening of plants with lower PME/higher PME1 levels or with higher levels of HGA-degrading enzymes.

MATERIALS AND METHODS

Generation of transgenic lines and plant growth. Generation of Arabidopsis (*Arabidopsis thaliana*) Columbia-0 (Col-0) and tobacco (*Nicotiana tabacum*) Petit Havana-SR1 plants expressing PG and of Arabidopsis Col-0 plants expressing AtPME1-2 was previously described (11, 13). Wheat (*Triticum durum* cv. Svevo) transgenic plants expressing a full length open reading frame of *AcPME1* (20) under the control of the maize *Ubi-1* promoter (24) were obtained as previously reported (25). Selection of wheat lines expressing high levels of the transgene was performed by RT-PCR and radial gel diffusion assay (Fig. S2). Total RNA was extracted using RNeasy Plant Mini kit (Qiagen SpA, Milano, Italy) following the manufacturer's procedure. Contaminating DNA was removed using the DNA-free™ mix (Ambion Ltd., Huntingdon, UK) and RNA concentration was determined spectrophotometrically. RT-PCR experiments were performed by using the QuantaTect® SYBR® Green RT-PCR (Qiagen) in a MyCycler™ thermal cycler (Bio-Rad Life Science, Segrate, Italy) using oligonucleotides specific for *AcPME1* (5'-CTTGTATCTTTGAGAACTGCAC-3' and 5'-CCAAGAGAATCAATAGCATCAGC-3').

Amplification of a wheat actin gene (accession number AB181991) was used as reference for transcript amplification using the following primers: 5'-AAGAGTCGGTGAAGGGGACT and 5'-TTCATACAGCAGGCAAGCAC.

Arabidopsis plants were grown in a growth chamber at 22°C, 70% relative humidity, with a 16 h light/8 h dark photoperiod ($100 \mu\text{mol m}^{-2} \text{s}^{-1}$ of fluorescent light). For measurements of rosette fresh and dry weight, plants were grown for 15 days at 16 h light/8 h dark photoperiod and then for 15 days at 12 h light/12 h dark photoperiod ($100 \mu\text{mol m}^{-2} \text{s}^{-1}$ of fluorescent light). Tobacco plants were grown in a growth chamber at 23°C and 60% relative humidity, with a 16 h light/8 h dark photoperiod ($130 \mu\text{mol m}^{-2} \text{s}^{-1}$). Wheat plants were grown in peat pots in growth chamber 14h light/10 h dark photoperiod ($300 \mu\text{mol m}^{-2} \text{sec}^{-1}$) at 24°C to stage 13, according to Zadoks system (26), vernalized for 3 weeks at 4°C and grown at 18°C for 10 days and then at 24°C with 50-60% of relative humidity until maturation. Before saccharification experiments, all plants were maintained for 24 h in darkness to minimize starch accumulation. For fresh and dry weight determination, the aerial vegetative portion of plants at the same stage of development of those used for saccharification experiments were weighed before and after treatment at 80°C for three (Arabidopsis), six (tobacco) and 48 hours (wheat).

For histological analysis, hypocotyls from seven-days-old etiolated Arabidopsis seedlings were fixed, dehydrated and embedded in hardgrade LR white resin (London Resin Company, Berkshire, UK). Semithin transverse sections (250 nm) were cut at the middle region of etiolated hypocotyls with a Reichert-Jung Ultracut E ultramicrotome and mounted on glass microslides previously coated with Vectabond reagent (Vector Laboratories). Sections were examined by light microscopy on an Axioscop microscope (Carl Zeiss) and photomicrographs were captured with a Canon Powershot G3 photcamera.

Enzymatic saccharification and acid pretreatment. Leaves were collected from 30-day-old Arabidopsis, 60-day-old tobacco or wheat plants at stage 69-71, according to Zadoks system (26),

corresponding to the formation of kernels. For stem saccharification, entire floral stems were collected from 6-week-old Arabidopsis plants, whereas the middle section of internodes 1, 2, and 3 was used for wheat. Leaves or stems were sterilized in a 1% sodium hypochlorite solution for 5 min and washed twice with sterile water; leaves were cut into 0.25 cm² square pieces, and stems were cut in 0.5 cm-long segments. Plant material (100 mg of fresh weight) was incubated at 37°C up to 24h in a filter-sterilized solution containing 50 mM sodium acetate buffer, pH 5.5, and enzymes. The following enzymatic preparations were used: for Arabidopsis and tobacco, 0.5% (v/v) or 1% (v/v) Celluclast 1.5 L (cellulase from *Trichoderma reesei* ATCC 26921, 973 EGU/ml; Sigma, St. Louis, MO; product number C2730, lot number 077K0737), respectively; for wheat, a mixture containing 0.5% (v/v) Celluclast 1.5 L and 0.25% (w/v) Macerozyme R-10 (pectinase and hemicellulase activity derived from *Rhizopus* sp., Yakult Pharmaceutical Industry, Tokyo, Japan; lot number 202039). For acid pretreatments, plant material (100 mg fresh weight) was incubated in 1.3 % sulphuric acid (v/v) at 110 °C for 20 min, the hydrolysates removed and the residual plant material was rinsed twice with distilled water before enzymatic saccharification.

Enzymatic saccharification efficiency was determined as percentage of reducing sugars released on the total sugars measured in untreated plant material or pretreated residual biomass.

Sugar determination. To determine the amount of sugars released after enzymatic saccharification, the incubation medium was collected, centrifuged at 11,000×g for 10 min and total reducing sugars in the supernatant were determined as described (27). The glucose and xylose content of enzymatic hydrolysates was determined by HPAEC-PAD (Ion Chromatography System ICS3000, Dionex, CA, USA) with CarboPac PA20 column 3x150 mm (Dionex, CA, USA). Before injection of each sample, the column was washed with 200 mM NaOH for 5 min, then equilibrated with 10 mM NaOH for 10 min. Samples were subjected to an isocratic elution with 10 mM NaOH at a flow rate of 0.4 ml min⁻¹ for 20 min. Monosaccharides were detected using a pulsed gold amperometric

detector set on waveform A, according to the manufacturer's instructions. Peaks were identified and quantified by comparison to a standard mixture of glucose and xylose (Sigma, St. Louis, MO).

The determination of total carbohydrates in untreated and pretreated plant material was performed according to the Laboratory Analytical Procedure of the National Renewable Energy Laboratory (http://www.nrel.gov/biomass/analytical_procedures.html). Plant material (100 mg) or pretreated residue derived from 100 mg of plant material were first hydrolysed in 72% (v/v) sulphuric acid at 30 °C for 1 h and then in 4% (v/v) sulphuric acid at 120 °C for 1 h. Total sugars were estimated spectrophotometrically using the phenol-sulphuric acid assay (28). Alcohol insoluble solid (AIS) was obtained as previously described (13), with minor modifications; leaves were frozen in liquid nitrogen and homogenized using a Retschmill machine (model MM301; Retsch) at 25 Hz for 1 min. Ground tissue was washed twice in 70% ethanol, vortexed and pelleted by centrifugation at 10,000×g for 10 min. The pellet was washed twice with a chloroform:methanol (1:1, v/v), vortexed and centrifuged at 10,000×g for 10 min. The pellet was washed twice with 80% acetone and, after centrifugation at 10,000×g for 10 min, was air-dried and weighed. Chelating Agent Soluble Solids (ChASS) fractions were obtained by homogenizing AIS material (100 mg for Arabidopsis and 150 mg for wheat) in a buffer containing 50 mM Tris-HCl and 50 mM trans-1,2-cyclohexanediaminetetraacetic acid (CDTA), pH 7.2, at 80°C. After centrifugation at 10,000×g for 10 min, samples were dialysed and freeze-dried. To determine starch content in the AIS, the dried pellet was washed twice with 20 mM potassium phosphate buffer, pH 6.9, at 70°C for 1 h, resuspended in 20 mM potassium phosphate buffer, pH 6.9, containing 7 mM NaCl, 0.01% (w/v) NaN₂ and porcine Type VII-A α -amylase (100 U g⁻¹ AIS; SIGMA, St. Louis, MO; product number A2643), and incubated 48 h at 30°C. After inactivation of the enzyme at 70°C for 10 min, the suspension was cooled, centrifuged at 8,000×g for 20 min, and total sugars in the supernatant were determined with the phenol-sulphuric acid assay as described above. Sugar content in AIS and

untreated and pretreated material and ChASS analysis were performed on tissues of the same plants used for saccharification experiments.

Immunodot assays. ChASS fractions (1-3 mg ml⁻¹ from Arabidopsis and wheat, respectively) were applied as 1 µl-aliquots to a nitrocellulose membrane (Amersham, UK) in a 3-fold dilution series and allowed to air dry. Membranes were blocked with 3% membrane blocking reagent powder (Amersham, UK) in phosphate-buffered saline (PBS; Bio-Rad) for 1 h prior to incubation for 1.5 h with primary antibodies. Specific epitopes were detected using PAM1ScFv (17) and JIM5 (29) monoclonal antibodies. After extensive washes in PBS, membranes were incubated with anti-rat secondary antibody conjugated to horseradish peroxidase (Amersham, UK) for JIM5, and with anti-His conjugated to horseradish peroxidase (Sigma) for PAM1. Membranes were washed as described above prior to detection with ECL detection reagent (Amersham, UK).

Protein analysis. Extraction of leaf total proteins and immunoblot analysis were performed as previously described (11). PG activity and PME1 activity in total protein extracts were determined by radial gel diffusion assay, as previously described (11, 13).

ACKNOWLEDGEMENTS

We thank D. Pontiggia for technical support to HPLC analysis and J. P. Knox for providing antibodies. This work was supported by the European Research Council (ERC Advanced Grant n. 233083 awarded to F. C.), the Institute Pasteur-Fondazione Cenci Bolognetti, the Italian Ministry of University and Research (PRIN 2007 Grant awarded to G. D. L., F.C. and R.D., and AgroGen Grant awarded to R.D.) and the European Union COST Action n. 928 (D.B.).

REFERENCES

1. Poorter H, Villar R (1997) in *Plant resource allocation*, eds Bazzaz FA, Grace J. (Academic Press, San Diego, USA), pp 39-72.
2. Himmel ME *et al.* (2007) Biomass recalcitrance: engineering plants and enzymes for biofuels production. *Science* 315:804-807.
3. Ogier JC *et al.* (1999) Ethanol production from lignocellulosic biomass. *Oil Gas Sci Technol* 54:67-94.
4. Yu Z, Zhang H (2004) Ethanol fermentation of acid-hydrolyzed cellulosic pyrolysate with *Saccharomyces cerevisiae*. *Bioresour Technol* 93:199-204.
5. Chen F, Dixon RA (2007) Lignin modification improves fermentable sugar yields for biofuel production. *Nat Biotechnol* 25:759-761.
6. Ezaki N, Kido N, Takahashi K, Katou K (2005) The role of wall Ca²⁺ in the regulation of wall extensibility during the acid-induced extension of soybean hypocotyl cell walls. *Plant Cell Physiol* 46:1831-1838.
7. Willats WG *et al.* (2001) Modulation of the degree and pattern of methyl esterification of pectic homogalacturonan in plant cell walls: implications for pectin methyl esterase action, matrix properties and cell adhesion. *J Biol Chem* :19404-19413.
8. Zhang GF, Staehelin LA (1992) Functional compartmentation of the golgi-apparatus of plant-cells - Immunocytochemical analysis of high-pressure frozen-substituted and freeze-substituted sycamore maple suspension-culture cells. *Plant Physiol* 99:1070-1083.
9. Ridley BL, O'Neill MA, Mohnen D (2001) Pectins: structure, biosynthesis, and oligogalacturonide-related signaling. *Phytochemistry* 57:929-967.
10. Grabber JH, Ralph J, Hatfield RD (2000) Cross-linking of maize walls by ferulate dimerization and incorporation into lignin. *Journal of Agricultural and Food Chemistry* 48:6106-6113.
11. Capodicasa C *et al.* (2004) Targeted modification of homogalacturonan by transgenic expression of a fungal polygalacturonase alters plant growth. *Plant Physiol* 135:1294-1304.
12. Ferrari S *et al.* (2008) Transgenic expression of a fungal endo-polygalacturonase increases plant resistance to pathogens and reduces auxin sensitivity. *Plant Physiol* 146:669-681.
13. Lionetti V *et al.* (2007) Overexpression of pectin methylesterase inhibitors in *Arabidopsis* restricts fungal infection by *Botrytis cinerea*. *Plant Physiol* 143:1871-1880.
14. Raiola A *et al.* (2004) Two *Arabidopsis thaliana* genes encode functional pectin methylesterase inhibitors. *FEBS Lett* 557:199-203.
15. Gomez LD, Steele-King CG, McQueen-Mason SJ (2008) Sustainable liquid biofuels from biomass: the writing's on the walls. *New Phytol* 178:473-485.
16. Wyman CE *et al.* (2005) Comparative sugar recovery data from laboratory scale application of leading pretreatment technologies to corn stover. *Bioresour Technol* 96:2026-2032.

17. Willats WG, Gilmartin PM, Mikkelsen JD, Knox JP (1999) Cell wall antibodies without immunization: generation and use of de-esterified homogalacturonan block-specific antibodies from a naive phage display library. *Plant J* 18:57-65.
18. Willats WG *et al.* (2000) Analysis of pectic epitopes recognised by hybridoma and phage display monoclonal antibodies using defined oligosaccharides, polysaccharides, and enzymatic degradation. *Carbohydr Res* 327:309-320.
19. Carpita NC, McCann MC (2008) Maize and sorghum: genetic resources for bioenergy grasses. *Trends Plant Sci* 13:415-420.
20. Di Matteo A *et al.* (2005) Structural basis for the Interaction between pectin methylesterase and a specific inhibitor protein. *Plant Cell* 17:849-858.
21. Zhang M, Su R, Qi W, He Z (2009) Enhanced Enzymatic Hydrolysis of Lignocellulose by Optimizing Enzyme Complexes. *Appl Biochem Biotechnol* In press.
22. Derbyshire P, McCann MC, Roberts K (2007) Restricted cell elongation in Arabidopsis hypocotyls is associated with a reduced average pectin esterification level. *BMC Plant Biol* 7:31.
23. An SH *et al.* (2008) Pepper pectin methylesterase inhibitor protein CaPMEI1 is required for antifungal activity, basal disease resistance and abiotic stress tolerance. *Planta* 228:61-78.
24. Christensen AH, Quail PH (1996) Ubiquitin promoter-based vectors for high-level expression of selectable and/or screenable marker genes in monocotyledonous plants. *Transgenic Res* 5:213-218.
25. Janni M *et al.* (2008) The expression of a bean polygalacturonase-inhibiting proteins in transgenic wheat confers increased resistance to the fungal pathogen *Bipolaris sorokiniana*. *Mol Plant-Microbe Interact* 21:171-177.
26. Chang TT, Konzak CF, Zadoks JC (1974) A Decimal Code for the Growth Stages of Cereals. *Weed Research* 14:415-421 .
27. Lever M (1972) A new reaction for colorimetric determination of carbohydrates. *Anal Biochem* 47:273-279.
28. Dubois M *et al.* (1956) Colorimetric methods for determination of sugars and related substances. *Anal Chem* 28:350-358 .
29. Willats WG *et al.* (2000) Analysis of pectic epitopes recognised by hybridoma and phage display monoclonal antibodies using defined oligosaccharides, polysaccharides, and enzymatic degradation. *Carbohydr Res* 327:309-320.

FIGURE LEGENDS

Fig. 1. Saccharification of leaf material from Arabidopsis PG or PME1 plants. Leaf material from untransformed Arabidopsis plants (WT) and from transgenic PG (A) and PME1 (B) plants were treated with Celluclast and saccharification efficiency was measured after 24 hours. (C) Tissue maceration of representative samples of WT (left) and transgenic (right) PG57 and PME17 leaf material after 24 hours of enzymatic saccharification. (D) Enzymatic saccharification efficiency of leaf tissue from WT, PG and PME1 plants after dilute-acid pretreatment. Numbers indicate different independent transgenic lines. Bars represent average saccharification efficiency \pm s.e.m. (N \geq 6). Different letters indicate statistically significant differences, according to ANOVA followed by Tukey's test (P<0.05). These experiments were repeated at least twice with similar results.

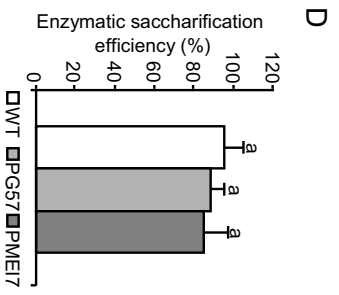
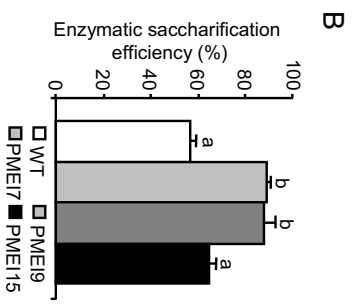
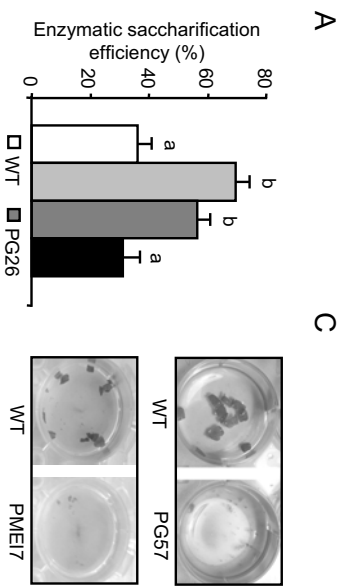
Fig. 2. Immunodot analysis of pectin in PG and PME1 plants. ChASS fractions were extracted from leaves of untransformed and transgenic Arabidopsis PG (A) and PME1 plants (B) and of untransformed and transgenic wheat AcPME1 plants (C). Numbers indicate different independent transgenic lines. The indicated amounts (in μ g) of ChASS fraction were applied at a single point to a nitrocellulose membrane. Specific HGA epitopes were detected using PAM1 and JIM5 monoclonal antibodies.

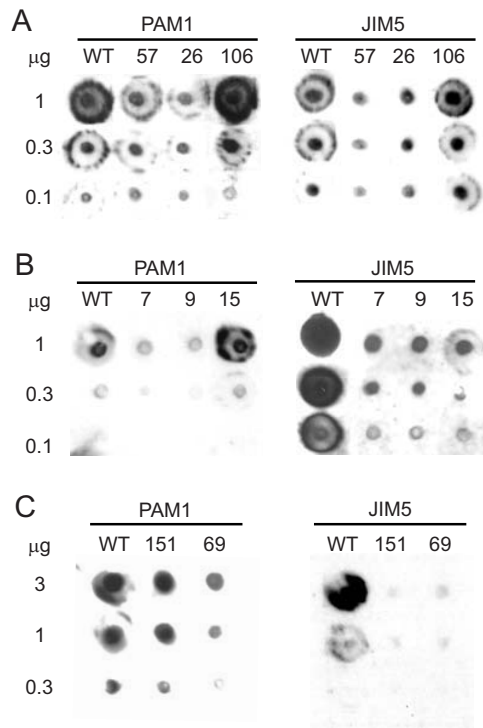
Fig. 3. Saccharification of leaf material from tobacco PG and wheat PME1 plants. (A) Leaf material from tobacco untransformed (WT) and PG-expressing plants was treated with Celluclast and saccharification efficiency was measured after 24 hours. (B, C) Leaf material from untransformed (WT) and transgenic wheat plants overexpressing AcPME1 was treated with a mixture of Macerozyme R-10 and Celluclast 1.5L without pretreatment (B) or after dilute-acid pretreatment (C), and saccharification efficiency was measured after 24 hours. Numbers indicate different independent transgenic lines. Bars represent average saccharification efficiency \pm s.e.m (N \geq 6).

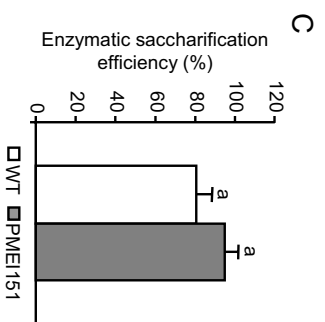
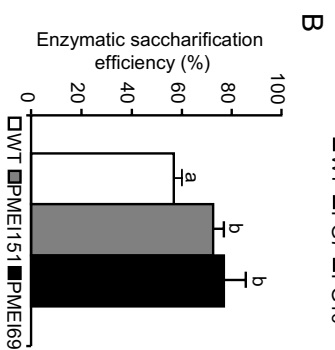
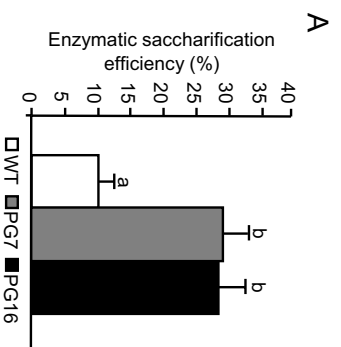
These experiments were repeated at least twice with similar results. Different letters indicate statistically significant differences, according to ANOVA followed by Tukey's test ($P < 0.01$).

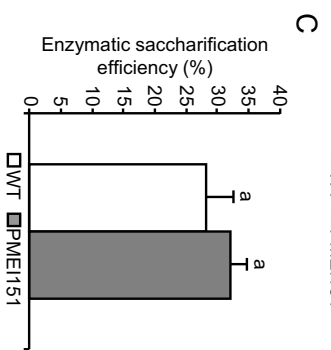
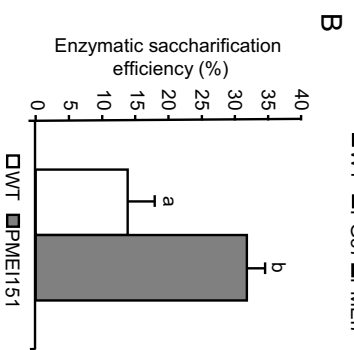
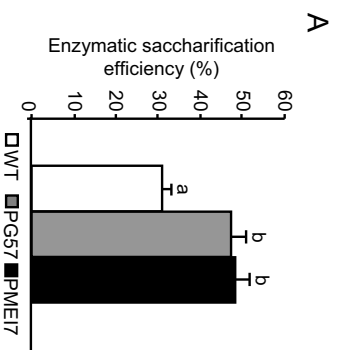
Fig. 4. Saccharification of stem material from PG and PMEI plants. (A) Stem segments from *Arabidopsis* untransformed (WT), PG57 and PMEI7 plants were treated with Celluclast and saccharification efficiency was measured after 24 hours. (B, C) Stem segments from wheat untransformed (WT) and PMEI151 plants were treated with a mixture of Macerozyme and Celluclast without pretreatment (B) or after dilute-acid pretreatment (C), and saccharification efficiency was measured after 24 hours. Bars represent average saccharification efficiency \pm s.e.m ($N \geq 6$). These experiments were repeated at least twice with similar results. Different letters indicate statistically significant differences, according to ANOVA followed by Tukey's test ($P < 0.01$). Total sugars in stem material were the following (mg g^{-1} f.w. \pm s.e.m.): *Arabidopsis* WT, 19.7 ± 0.5 ; PG57, 18.5 ± 0.04 ; PMEI7, 22.5 ± 1.6 ; wheat WT, 57.0 ± 4.8 ; PMEI151, 53.2 ± 4 ; pretreated wheat WT, 64.1 ± 3.3 ; pretreated PMEI151, 64.8 ± 2.4 . Differences in sugar content between transgenic and parental lines were not statistically different, according to Student's t-test ($P > 0.05$).

Fig. 5. Morphological analysis of *Arabidopsis* PMEI plants. (A) Photographs of representative *Arabidopsis* untransformed (left) and PMEI7 (right) plants grown for 30 days. (B) Transverse sections of hypocotyls of etiolated untransformed (left) and PMEI7 (right) seedlings were photographed in light microscopy. Scale bars, 40 μm .









A



B

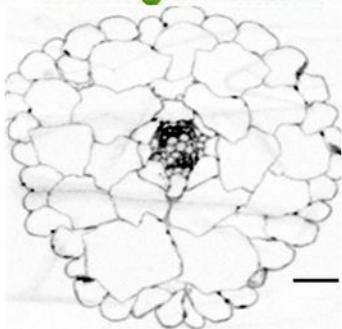
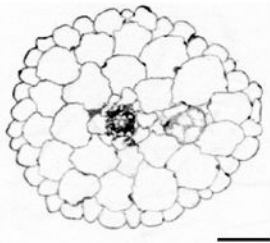


Table 1. Effects of the expression of PG and PME1 on plant biomass. Fresh weight (FW) and dry weight (DW) of aerial vegetative parts of Arabidopsis, tobacco and wheat untransformed (WT) and transgenic plants. Data represent the average \pm s.e.m. of at least 6 plants. Asterisks indicate statistically significant differences between transgenic and WT parental lines, according to Student's *t*-test ($P < 0.001$).

		FW (mg)	DW (mg)	DW/FW
Arabidopsis	WT	138 \pm 10	15.7 \pm 0.2	0.11 \pm 0.02
	PG57	82 \pm 3 *	8.1 \pm 0.1 *	0.10 \pm 0.02
	PMEI7	253 \pm 18 *	27.4 \pm 1.8 *	0.11 \pm 0.02
Tobacco	WT	40550 \pm 50	1465 \pm 15	0.04 \pm 0.00
	PG16	6100 \pm 500 *	240 \pm 15 *	0.04 \pm 0.00
Wheat	WT	2785 \pm 569	875 \pm 186	0.31 \pm 0.12
	PMEI151	3107 \pm 119	1080 \pm 46	0.35 \pm 0.03