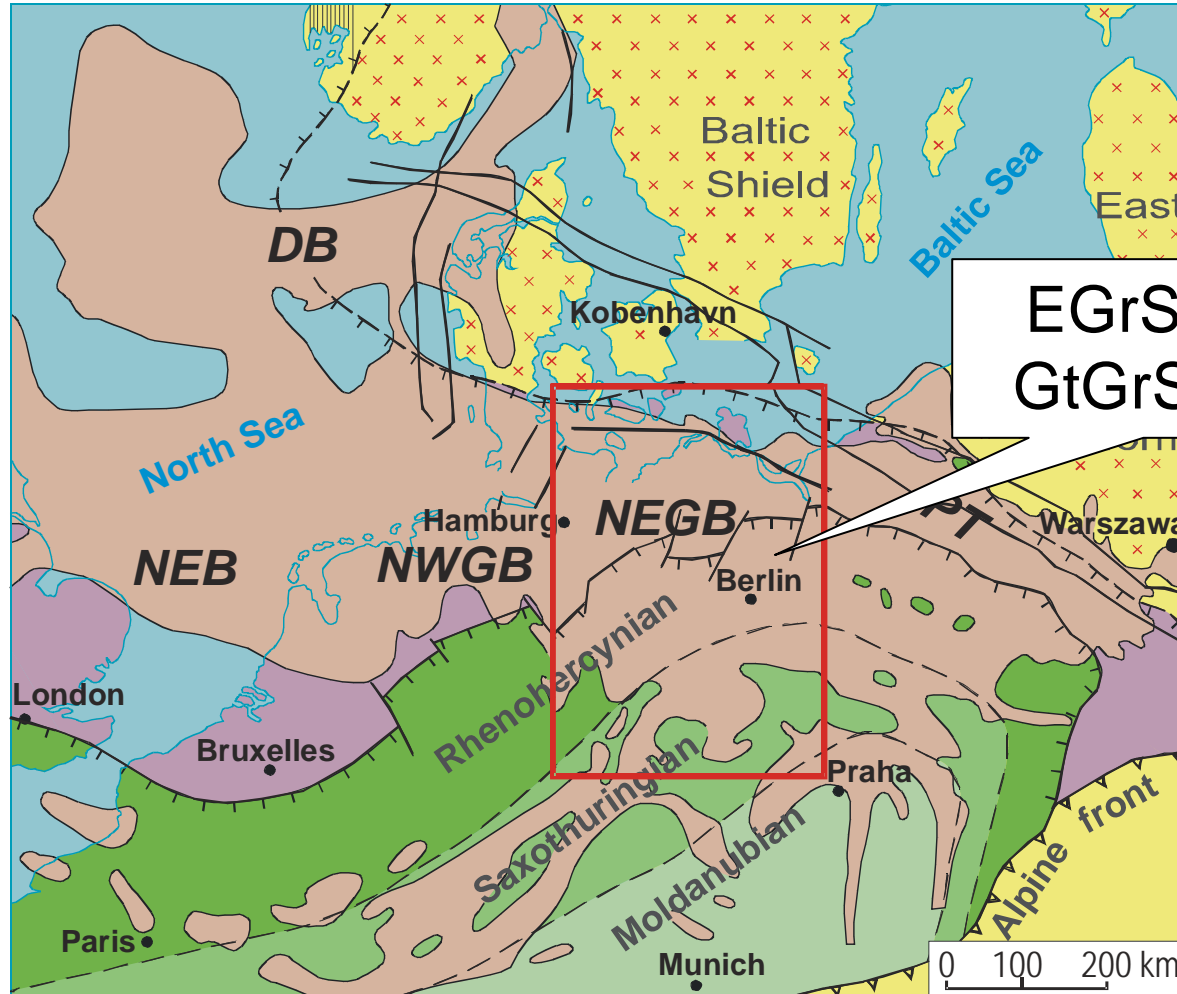


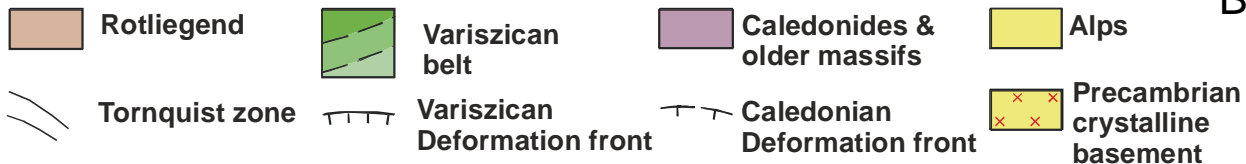


Günter Zimmermann & Geothermics Group
GeoForschungsZentrum Potsdam

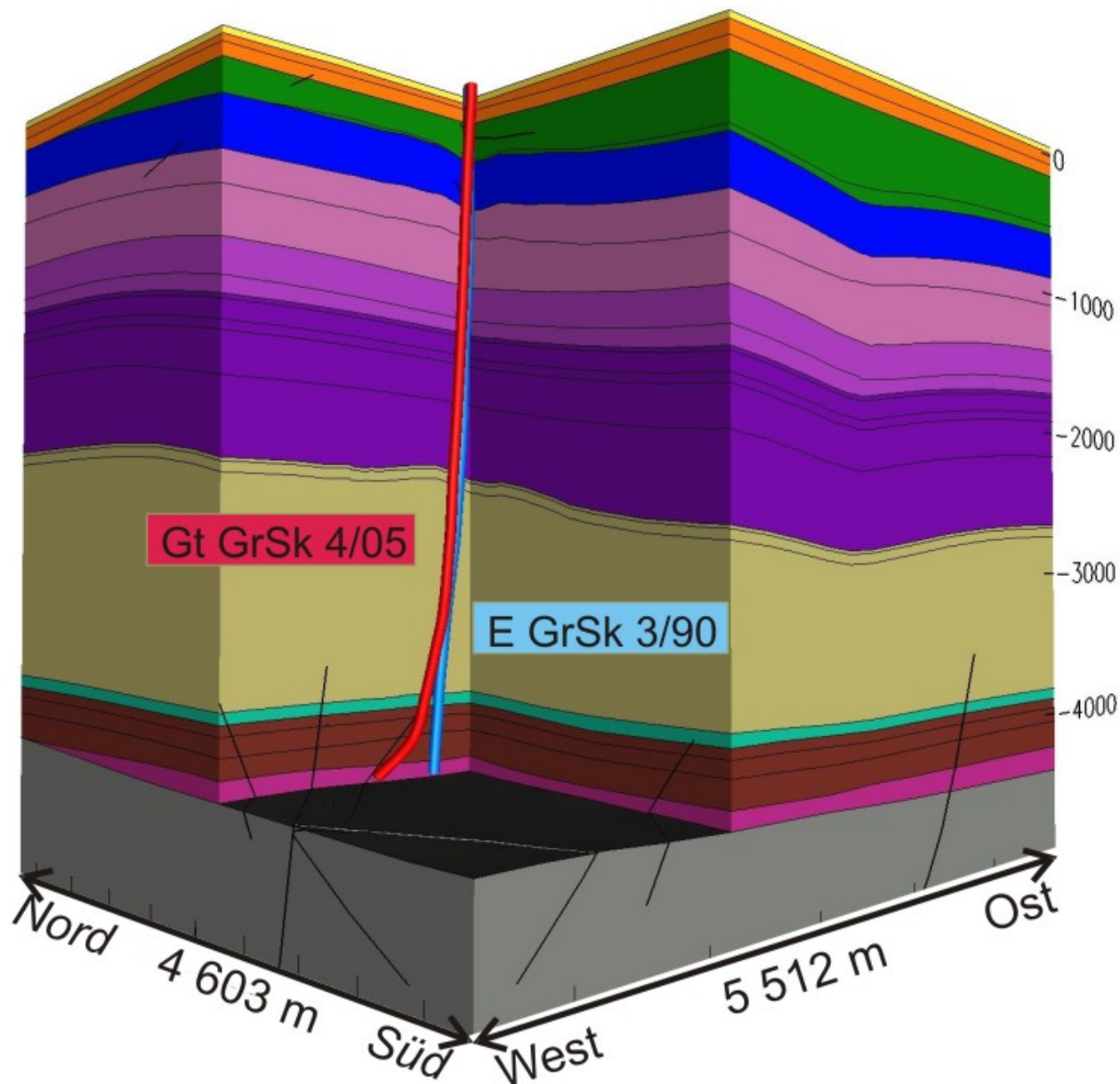


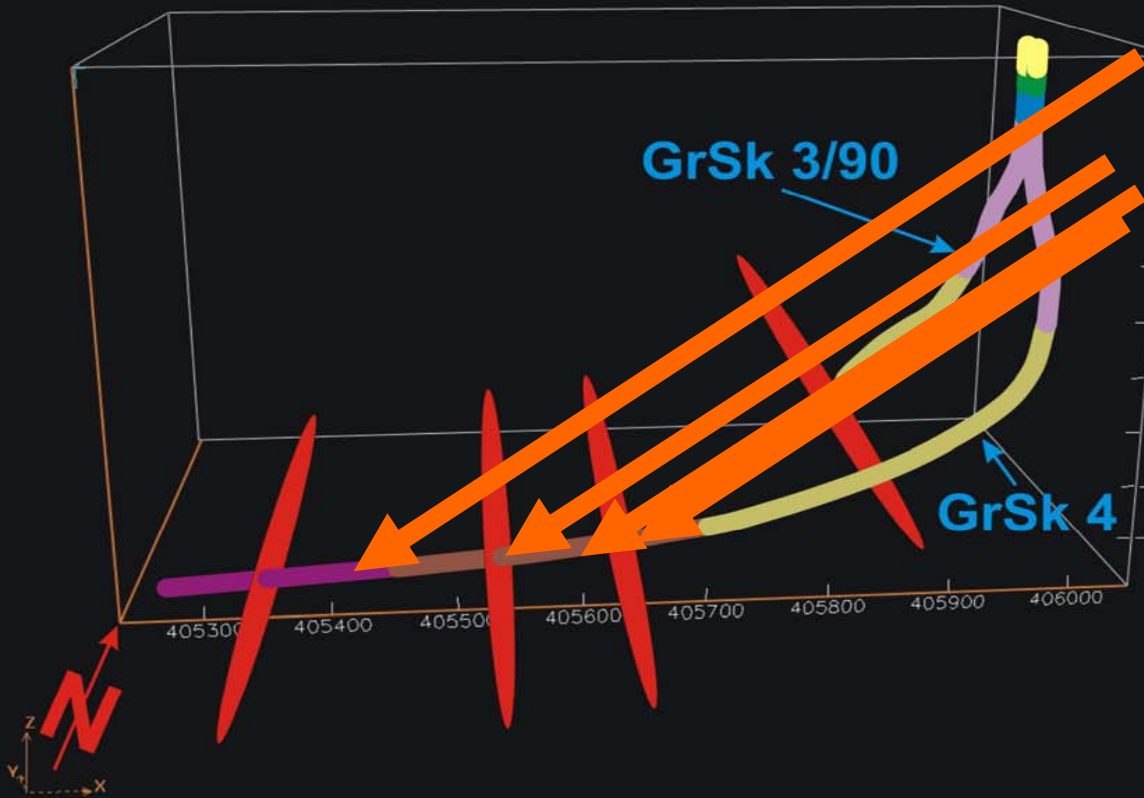
EGrSk3/90
GtGrSk4/05

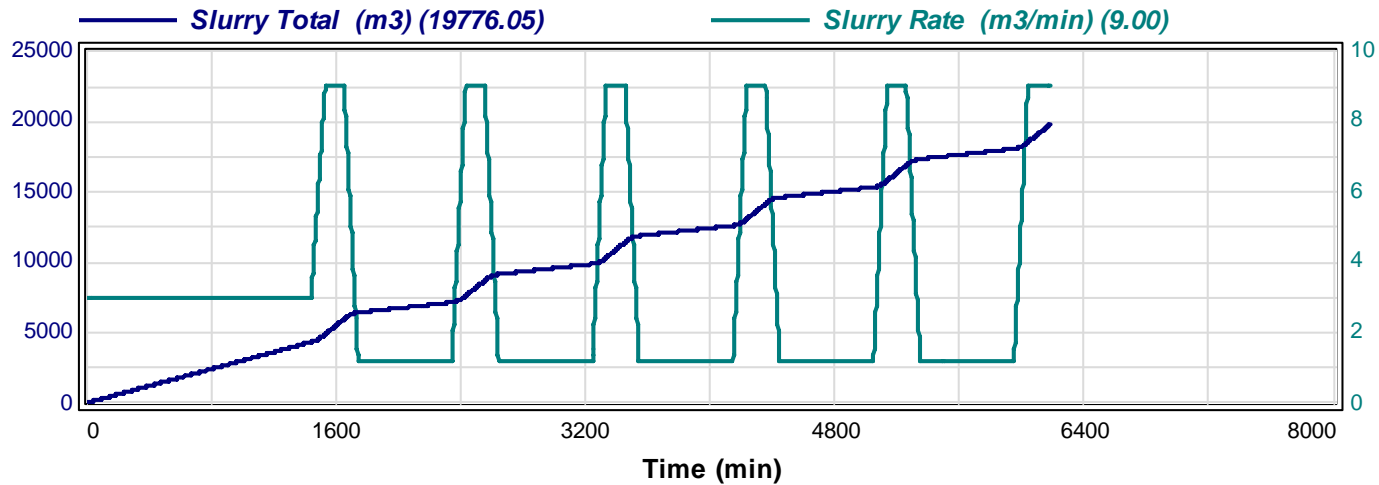
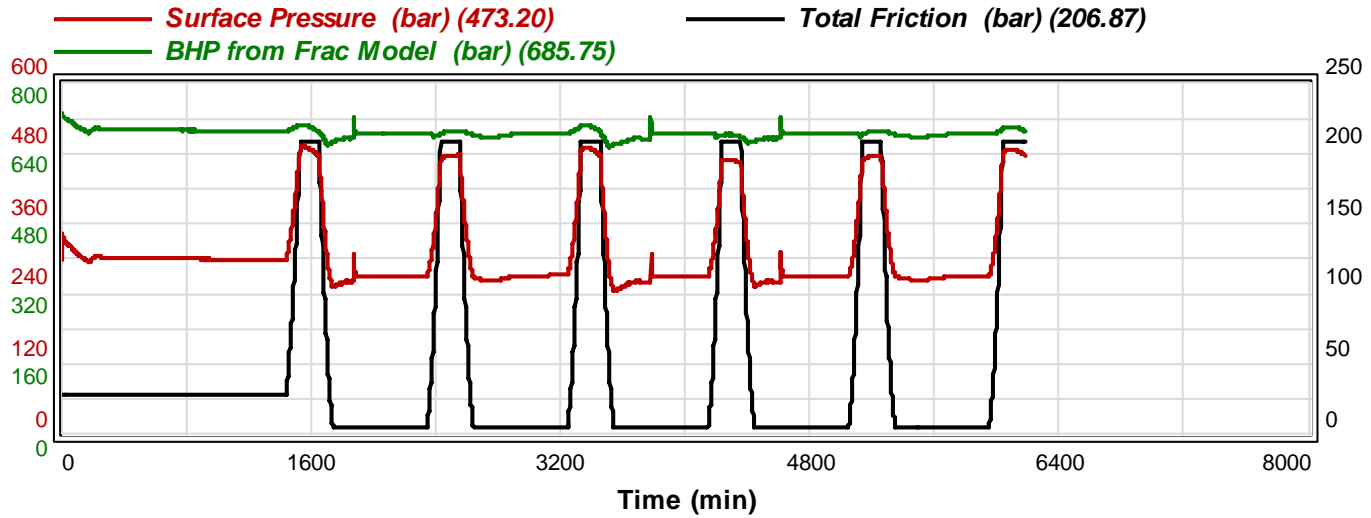
(modified after Ziegler 1990, Bertelsen 1992, Brecht 1999)

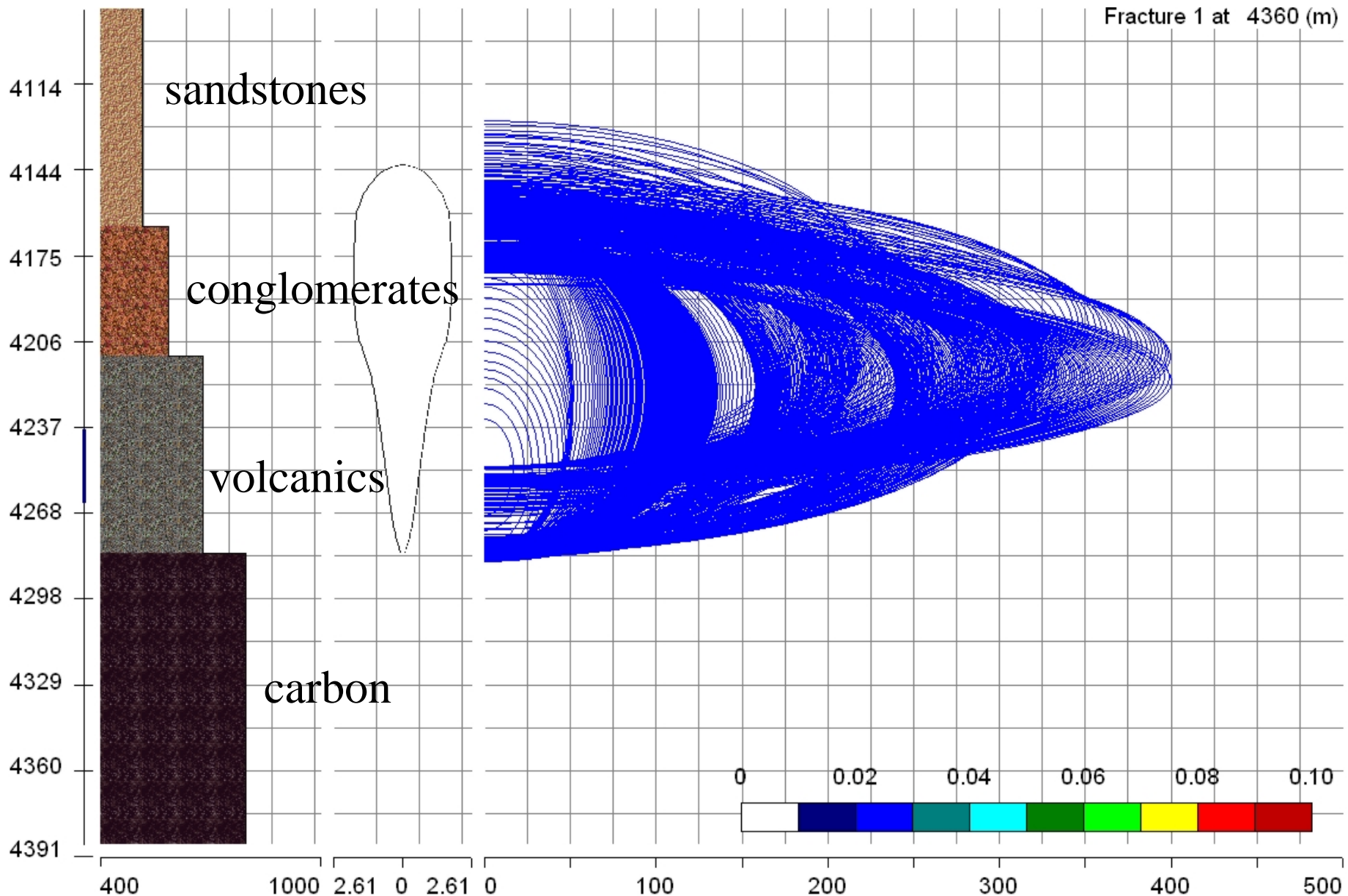


well path



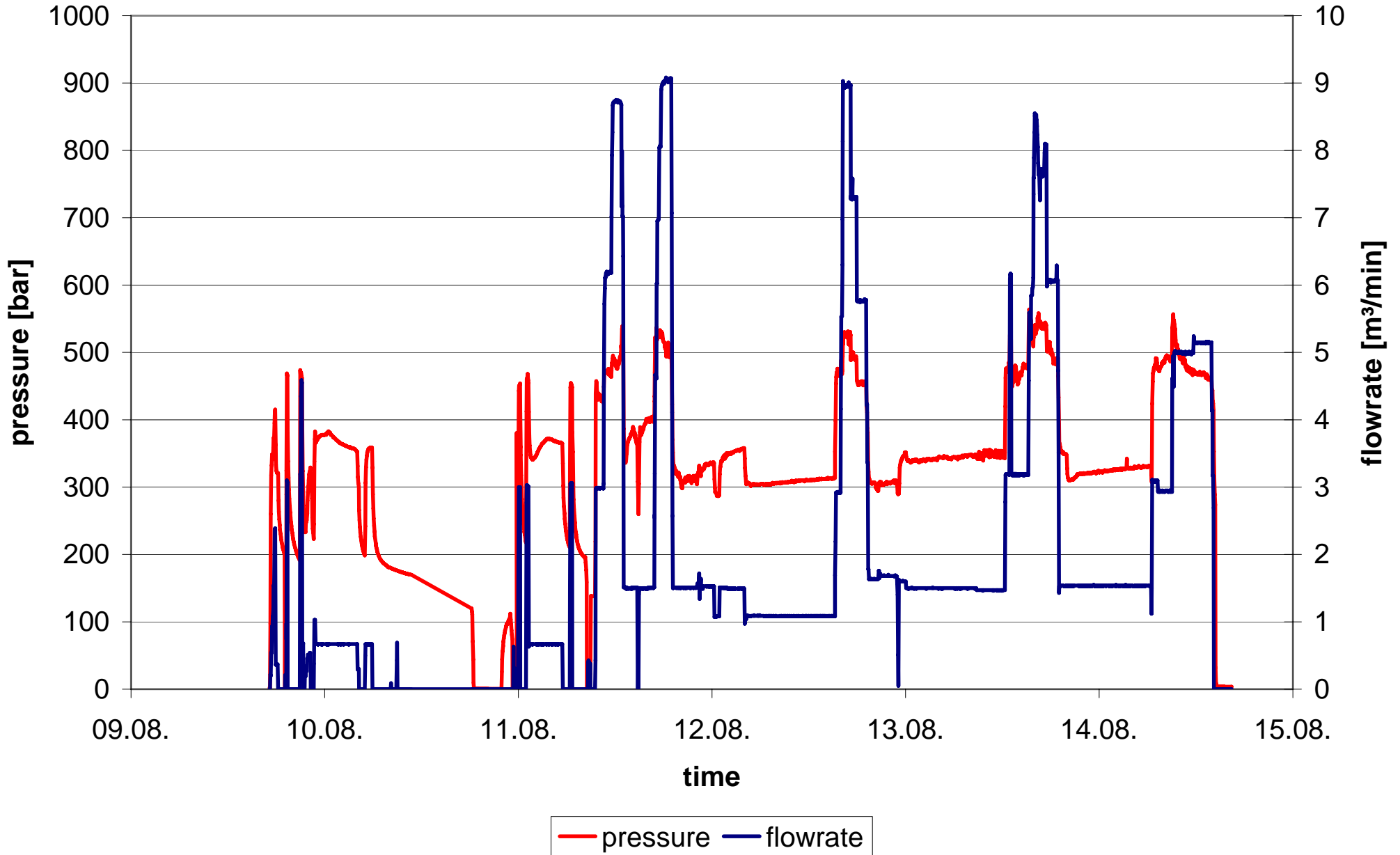


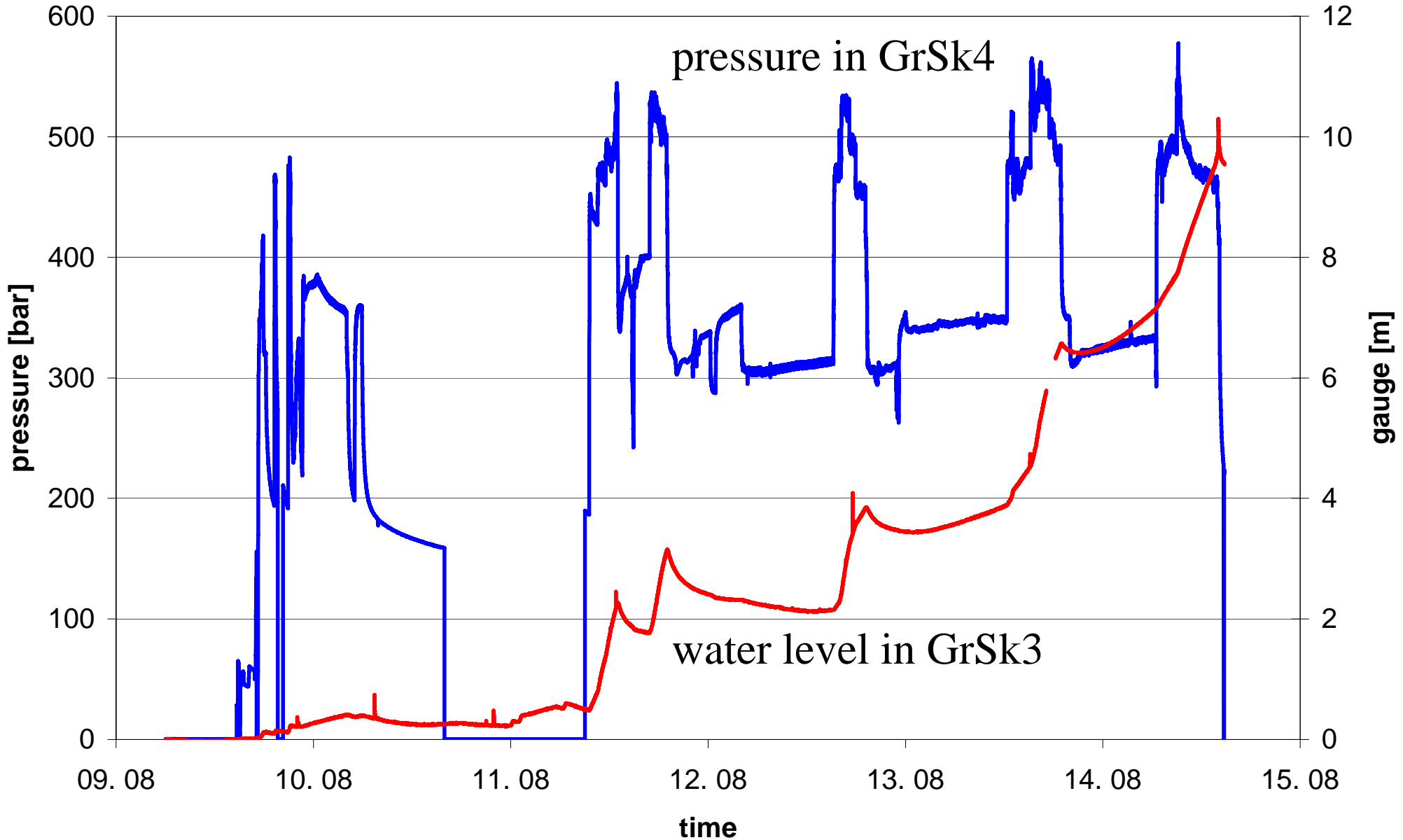




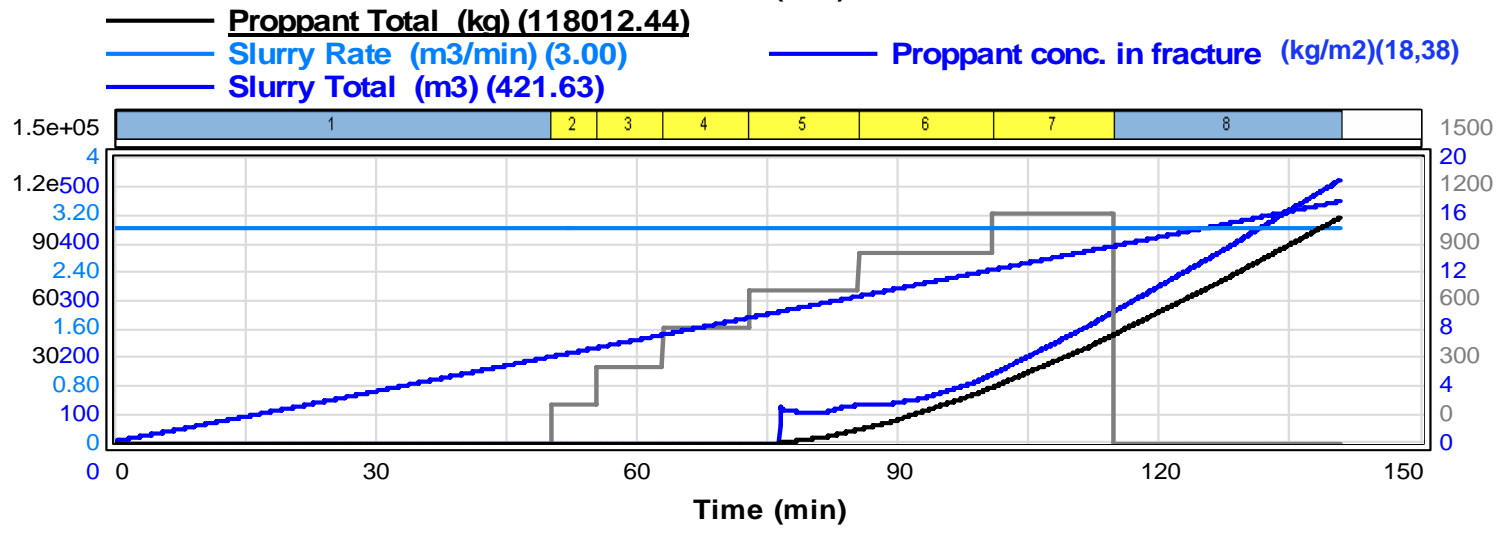
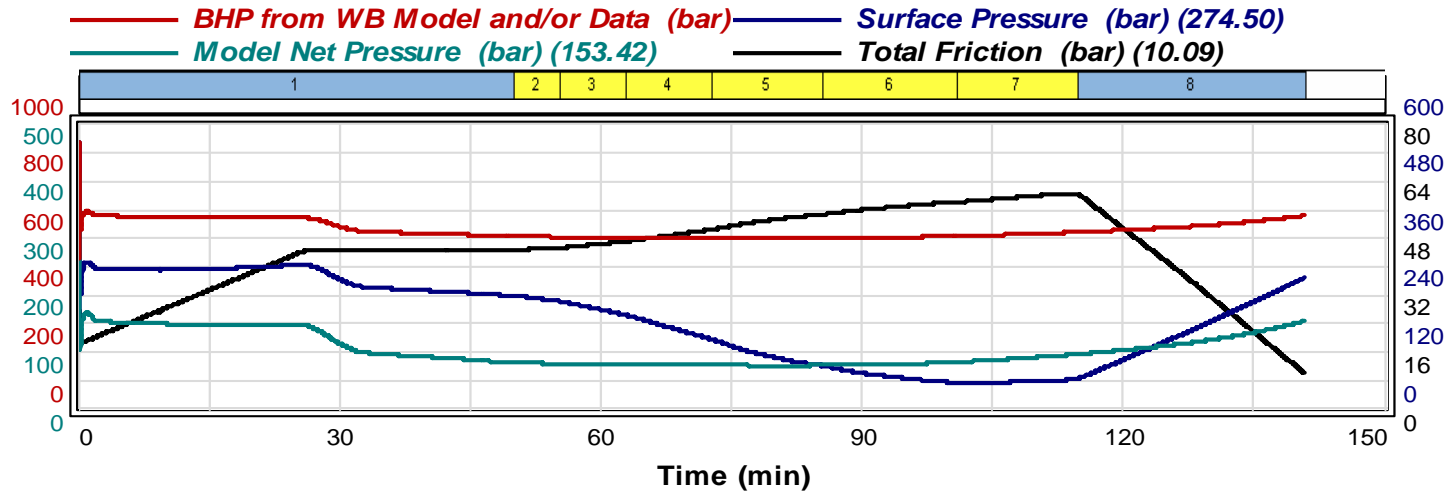
frac equipment



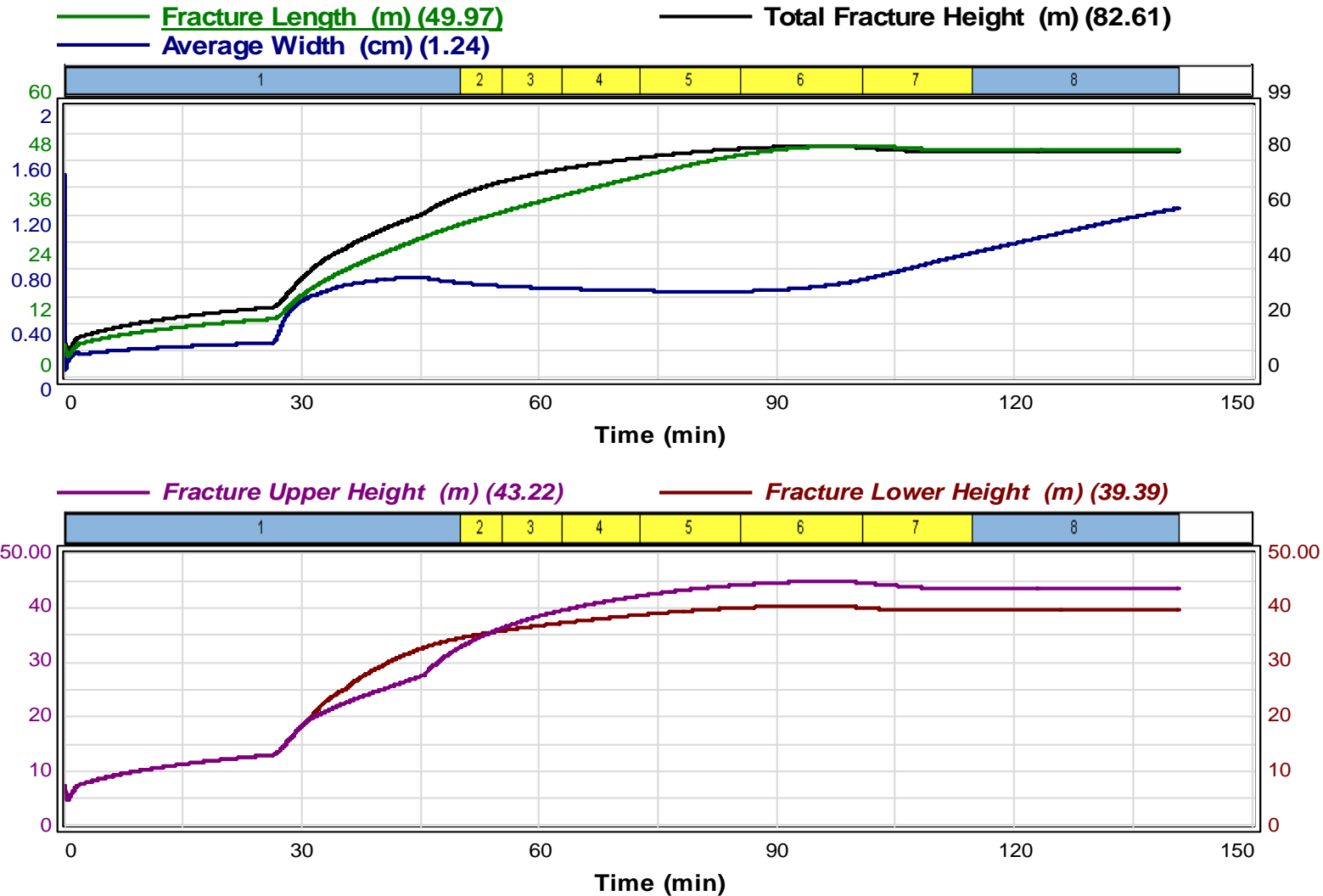






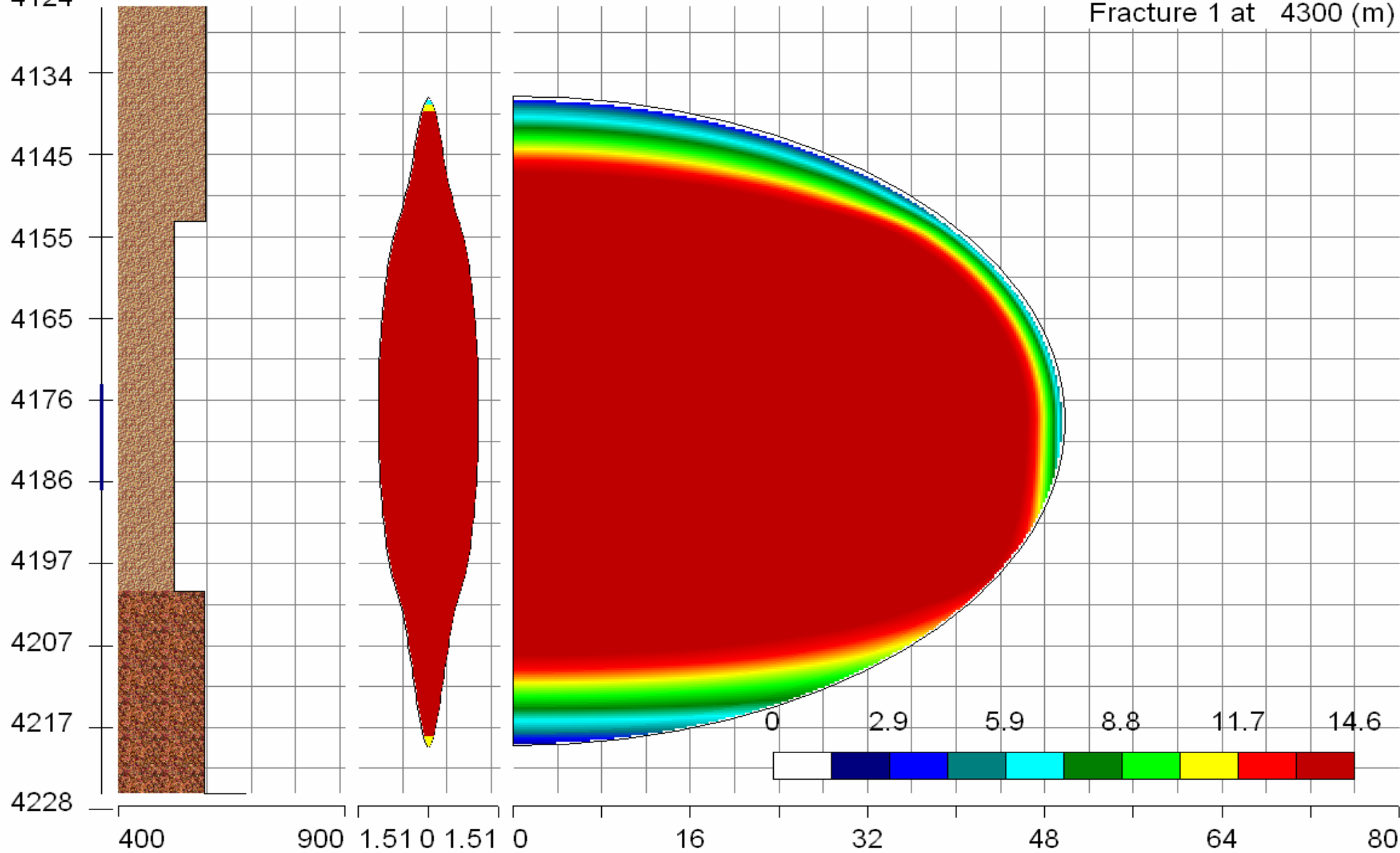


gel-proppant fracture dimensions

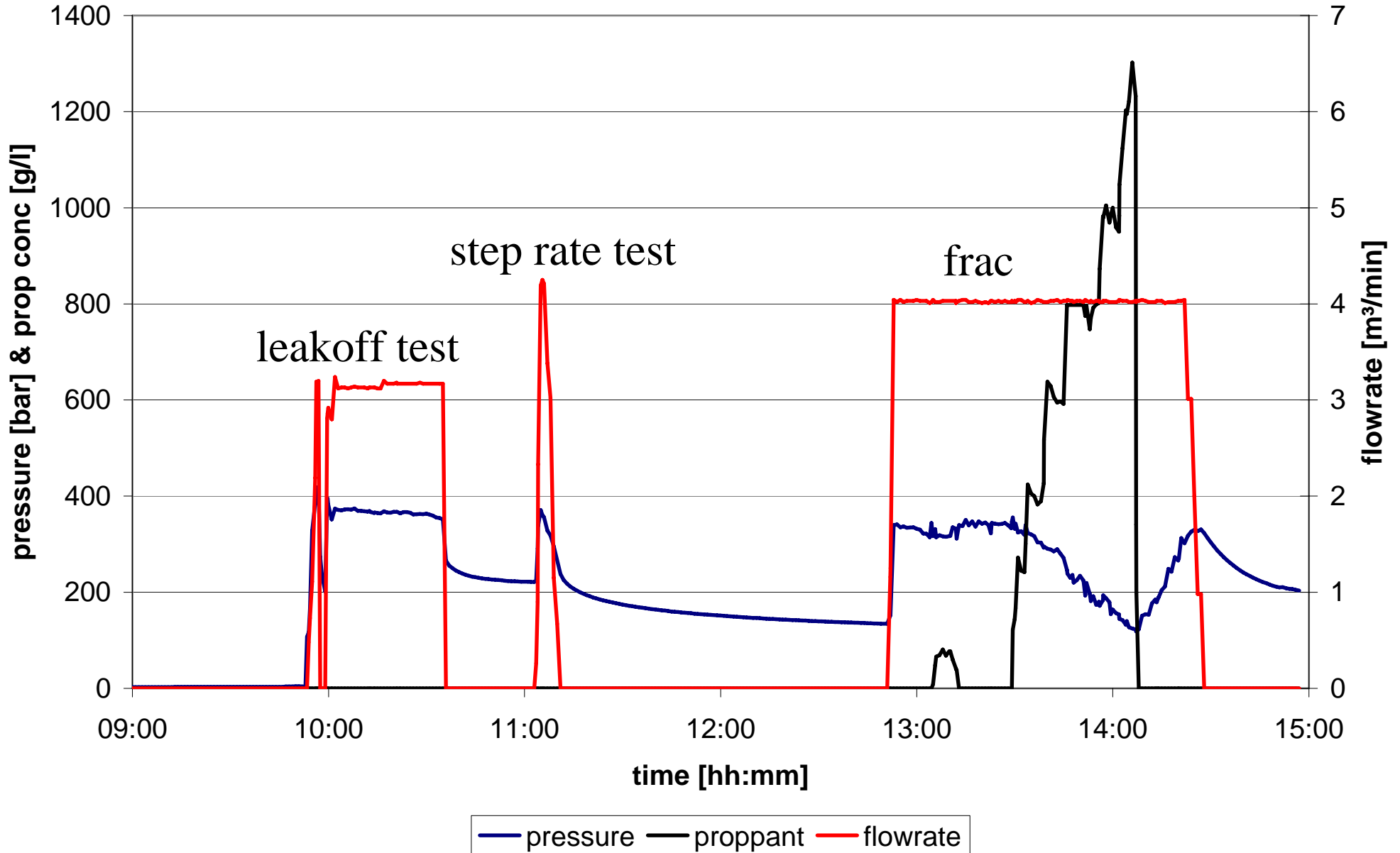


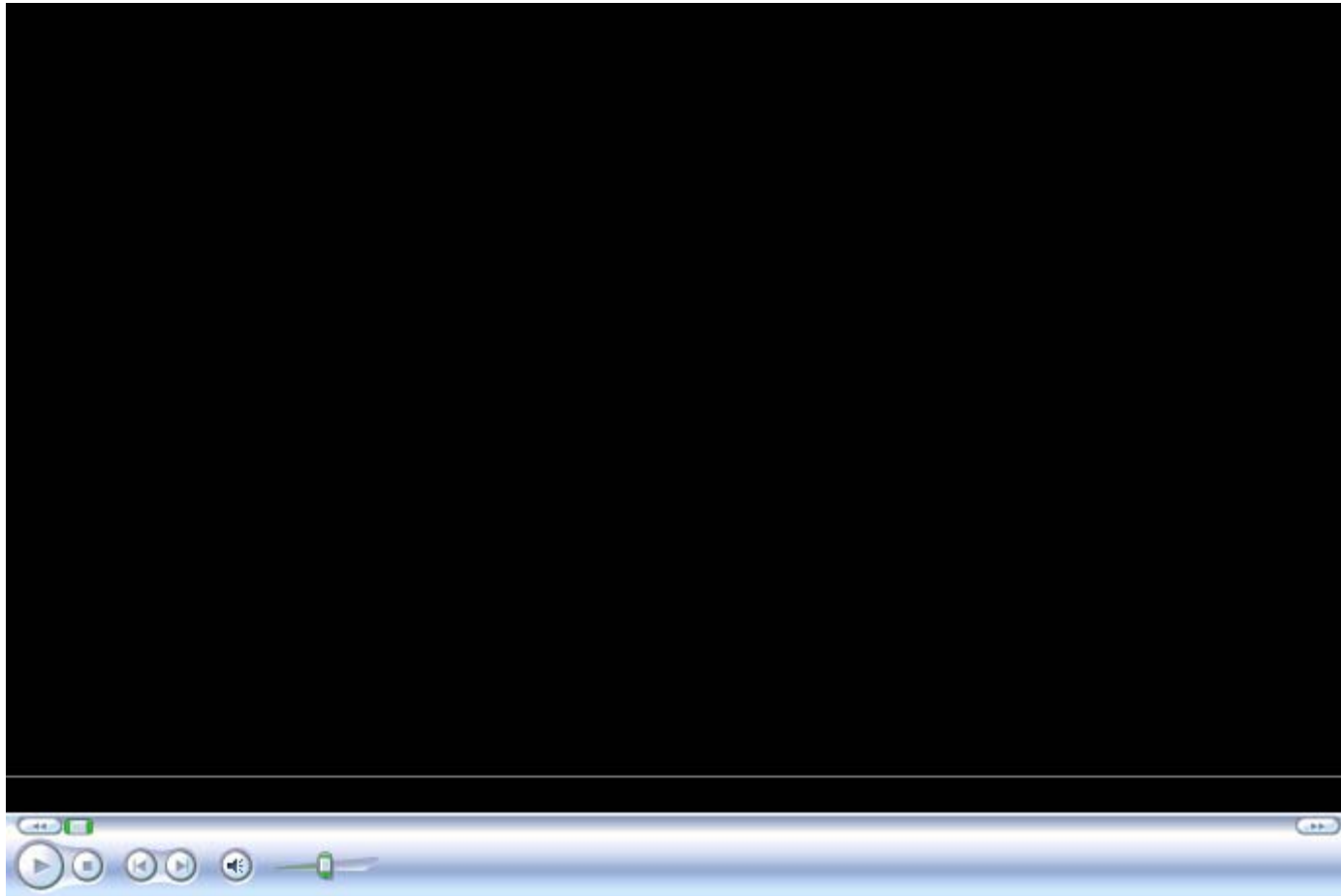
proppant concentration

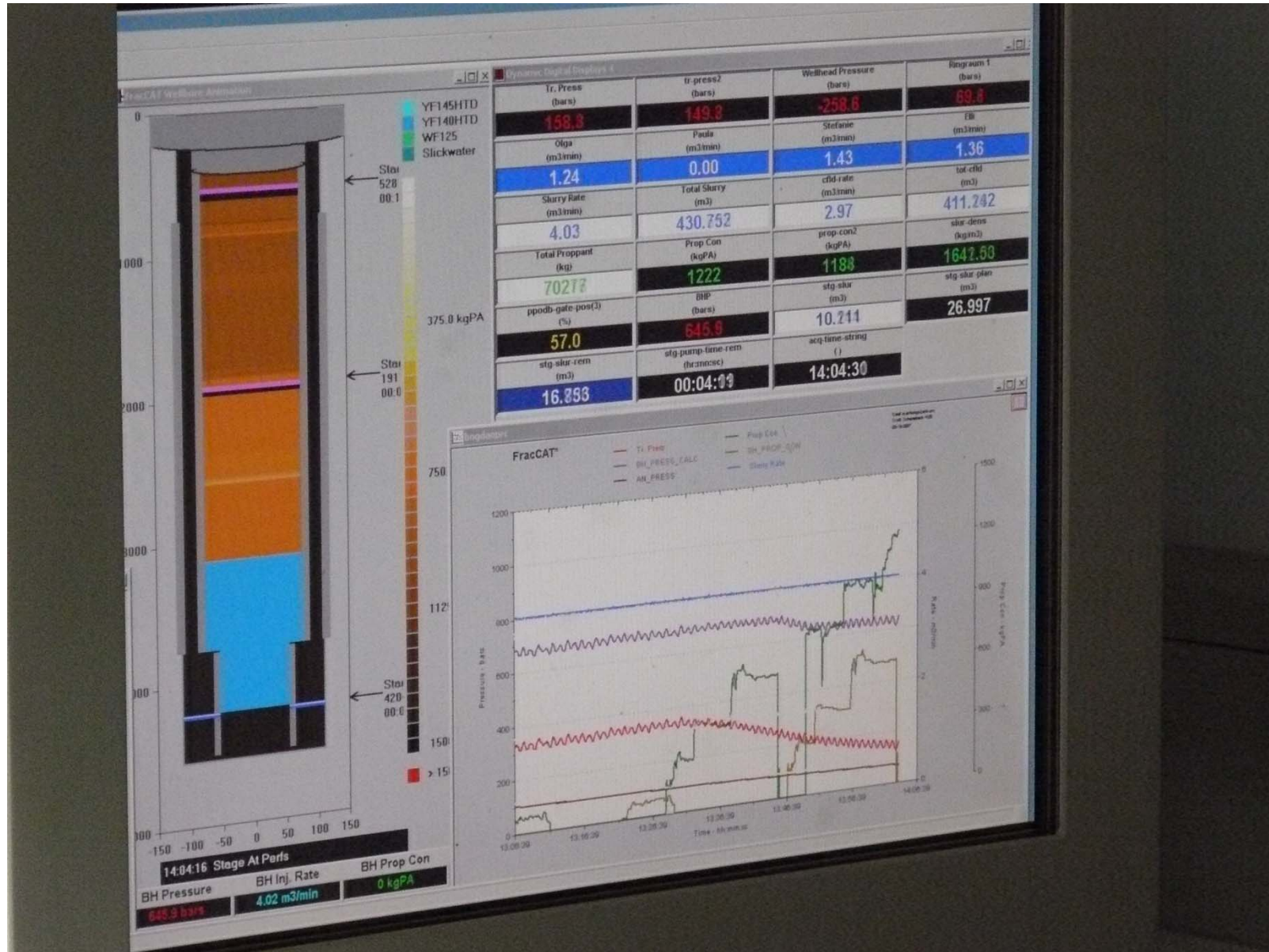
Fracture 1 at 4300 (m)



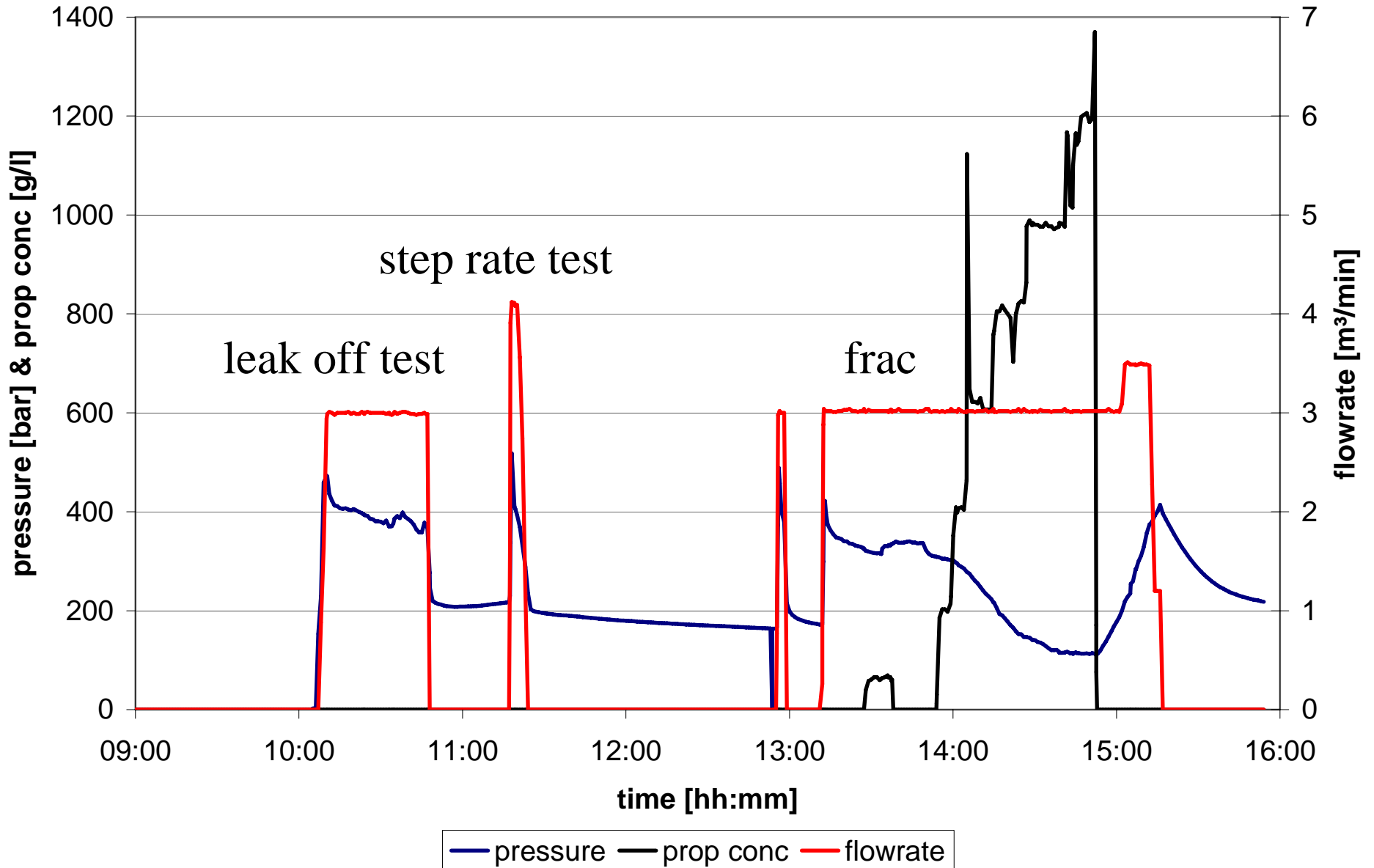
1. gel proppant treatment





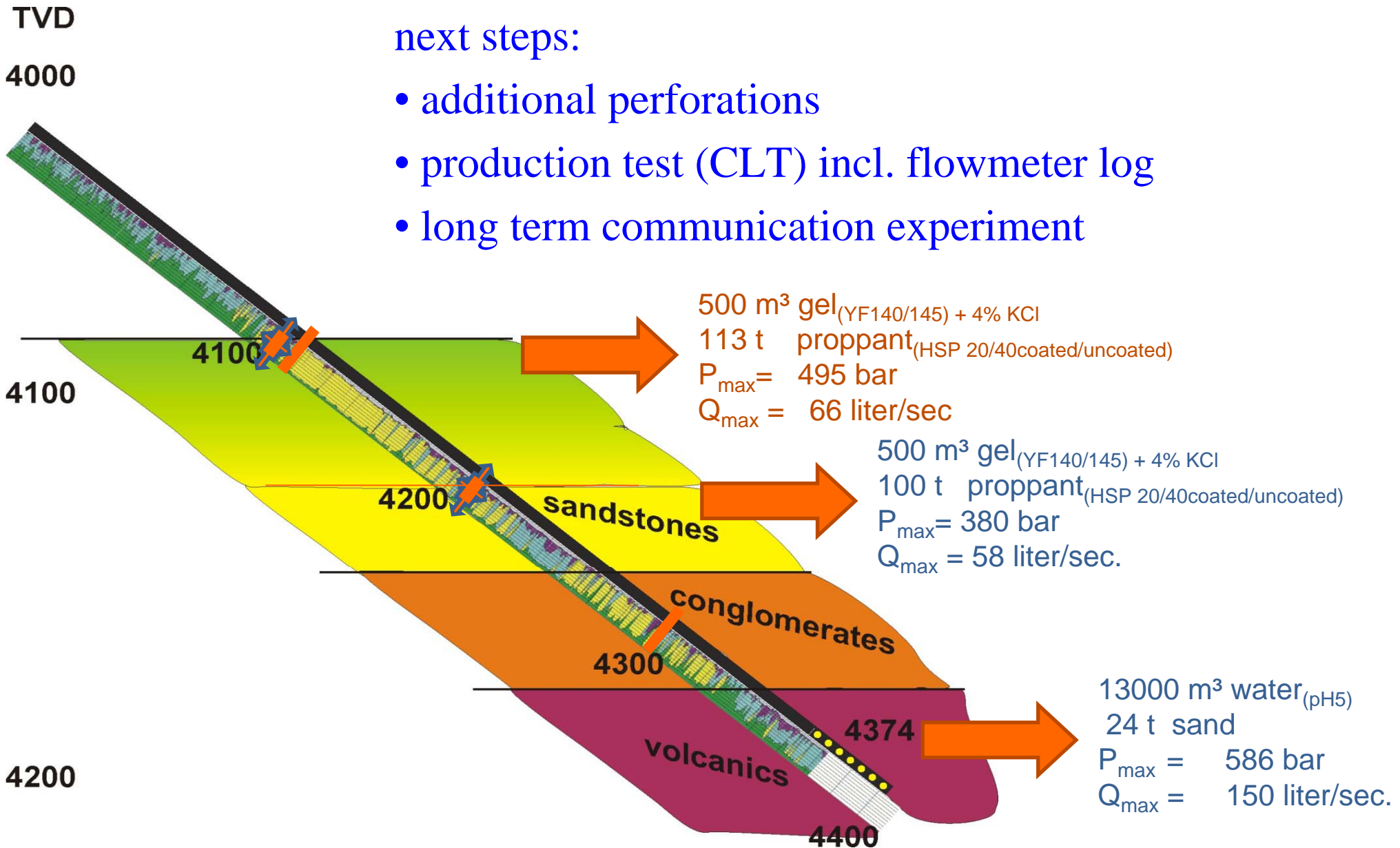


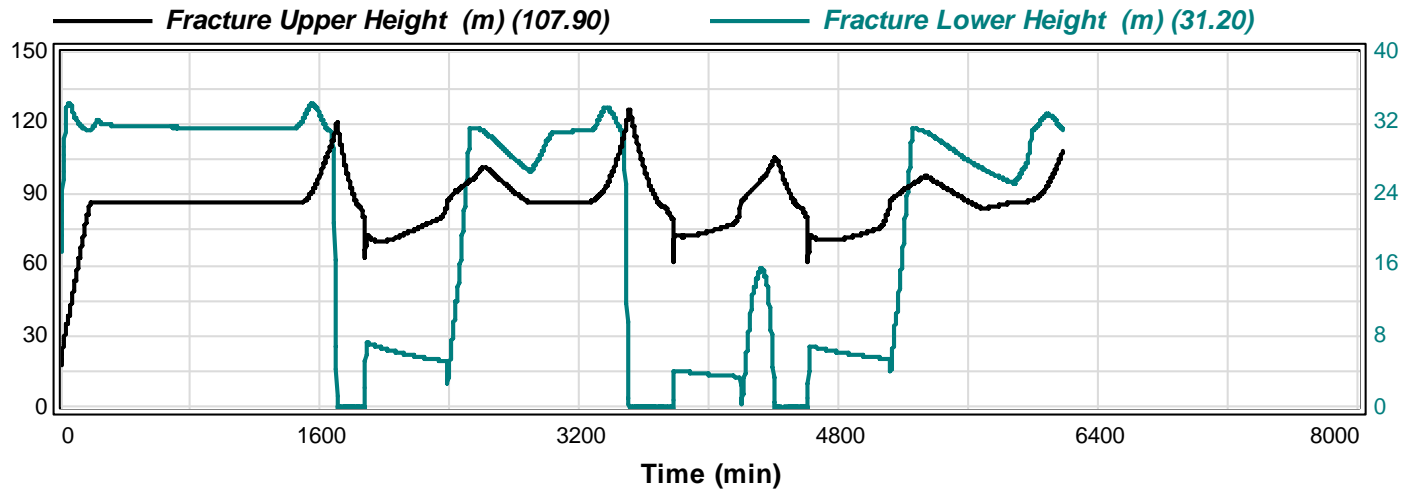
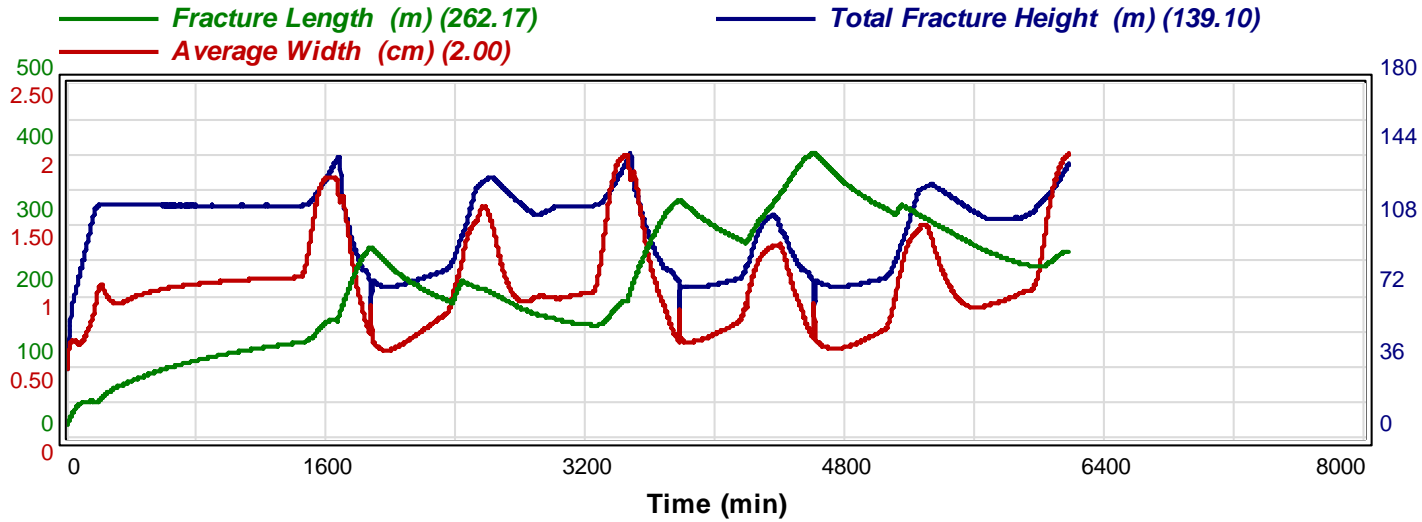
2. gel proppant treatment



next steps:

- additional perforations
- production test (CLT) incl. flowmeter log
- long term communication experiment





proppant concentration

MD (m) Concentration of Proppant in Fracture (kg/m³)

Fracture Conductivity (mD·m) (m)

Stress Profile (bar)

