



Large Spatial Scale Variability in Bathyal Macrobenthos Abundance, Biomass, α - and β -Diversity along the Mediterranean Continental Margin

Elisa Baldrighi¹, Marc Lavaleye², Stefano Aliani³, Alessandra Conversi^{3,4}, Elena Manini^{1*}

1 Institute of Marine Sciences, National Research Council (ISMAR-CNR), Ancona, Italy, **2** Department of Marine Ecology, Royal Netherlands Institute for Sea Research (NIOZ), Texel, The Netherlands, **3** Institute of Marine Sciences, National Research Council (ISMAR-CNR), La Spezia, Italy, **4** Marine Institute, Plymouth University, Plymouth, United Kingdom

Abstract

The large-scale deep-sea biodiversity distribution of the benthic fauna was explored in the Mediterranean Sea, which can be seen as a miniature model of the oceans of the world. Within the framework of the BIOFUN project ("Biodiversity and Ecosystem Functioning in Contrasting Southern European Deep-sea Environments: from viruses to megafauna"), we investigated the large spatial scale variability (over >1,000 km) of the bathyal macrofauna communities that inhabit the Mediterranean basin, and their relationships with the environmental variables. The macrofauna abundance, biomass, community structure and functional diversity were analysed and the α -diversity and β -diversity were estimated across six selected slope areas at different longitudes and along three main depths. The macrobenthic standing stock and α -diversity were lower in the deep-sea sediments of the eastern Mediterranean basin, compared to the western and central basins. The macrofaunal standing stock and diversity decreased significantly from the upper bathyal to the lower bathyal slope stations. The major changes in the community composition of the higher taxa and in the trophic (functional) structure occurred at different longitudes, rather than at increasing water depth. For the β -diversity, very high dissimilarities emerged at all levels: (i) between basins; (ii) between slopes within the same basin; and (iii) between stations at different depths; this therefore demonstrates the high macrofaunal diversity of the Mediterranean basins at large spatial scales. Overall, the food sources (i.e., quantity and quality) that characterised the west, central and eastern Mediterranean basins, as well as sediment grain size, appear to influence the macrobenthic standing stock and the biodiversity along the different slope areas.

Citation: Baldrighi E, Lavaleye M, Aliani S, Conversi A, Manini E (2014) Large Spatial Scale Variability in Bathyal Macrobenthos Abundance, Biomass, α - and β -Diversity along the Mediterranean Continental Margin. PLoS ONE 9(9): e107261. doi:10.1371/journal.pone.0107261

Editor: Brian R. MacKenzie, Technical University of Denmark, Denmark

Received: December 4, 2013; **Accepted:** August 13, 2014; **Published:** September 16, 2014

Copyright: © 2014 Baldrighi et al. This is an open-access article distributed under the terms of the Creative Commons Attribution License, which permits unrestricted use, distribution, and reproduction in any medium, provided the original author and source are credited.

Funding: This study is part of ESF-EuroDEEP project BIOFUN (CTM2007-28739-E) and for final version by BALMAS (IPA ADRIATIC project; 1°STR/0005). The funders had no role in study design, data collection and analysis, decision to publish, or preparation of the manuscript.

Competing Interests: The authors have declared that no competing interests exist.

* Email: e.manini@ismar.cnr.it

Introduction

Different studies have been conducted worldwide to define latitudinal and longitudinal diversity patterns of marine biodiversity [1–3], which have often been coupled to the bathymetric trends of organisms [4–7]. Nevertheless, these patterns and the mechanisms involved in their generation are still far from being understood [8–11].

Rex and co-authors [12] presented the first global-scale analysis of the bathymetric patterns of the standing stock (i.e., abundance, biomass) for four major size classes of deep-sea biota: prokaryotes, metazoan meiofauna, macrofauna and megafauna. For the last three of these benthic components, they reported that the community standing-stock decreases with depth, and interpreted this to be a universal phenomenon. This is, however, controversial, and should be related to the taxon considered each time within each benthic size component [13–15]. Similarly, for the bathymetric trends in the standing stock, the well-known 'hump-shape' distribution in species richness with a diversity maximum at mid-slope depths might not always be the rule [16–18].

The spatial heterogeneity of benthic communities is usually related to the different environmental conditions encountered

[19], although our understanding of the mechanisms that might act as drivers for the benthic fauna distribution and diversity in the deep sea is still limited [20]. Nevertheless, some factors are usually invoked, including: substrate heterogeneity [21,22]; water circulation [4,23]; oxygen availability [19]; productivity and microbial activity [24]; and food resources [25,26]. Food availability in particular, which is mainly determined by the surface-water primary production [27], and which can decrease sharply with depth, appears to be a major factor that influences the standing stock and the diversity of the deep-benthic communities that depend on this allochthonous organic-matter input [10,28,29]. Degradation processes in the water column that affect the quantity and quality of the organic matter that reaches the bottom have also been suggested to have an influence on benthic communities [30].

In the Mediterranean Sea, an overall decrease in benthic abundance, biomass and species richness has been observed from northwestern to southeastern areas for the meiofauna [29,31], macrofauna [4,32–34] and megafauna [35,36]. According to different studies [37,38], the west-east gradient of decreasing surface-water productivity of the Mediterranean Sea is reflected

in an increasing paucity of the food that reaches the sea floor moving eastwards. Such a gradient might thus be responsible for the decrease in deep benthic fauna abundance and biomass from west to east. Danovaro and co-authors [39] have shown that the effects of the food supply, and consequently the derived longitudinal trend in the Mediterranean, might be inconsistent across different components of the benthic diversity.

There have been few recent quantitative studies that have dealt with the large-scale patterns of distribution and diversity of the deep Mediterranean macrofauna and/or have addressed the influence of environmental conditions on these macrofauna communities. After a qualitative review by Fredj and Laubier [40] and some descriptive studies that were conducted on bathyal and abyssal macrofaunal organisms or focused on specific taxonomic groups [34,41–54], the most recent studies have reported that the bathyal macrofauna communities in the eastern basin are characterised by low abundance and low diversity, with respect to the western basin; these decrease sharply with depth and are strongly related to food availability [32,55,56]. The scant information regarding the macrofauna of the western basin comes from a limited number of slope and canyon areas [23,26,57,58] on the northwestern side of this basin, and shows a decrease in both biomass and density with depth.

We hypothesised that the macrofauna standing stock and diversity change with longitude and depth and according to the major influential environmental variables that characterise the systems investigated.

The main aims were thus to study the deep Mediterranean, in order to:

- assess the longitudinal-related (over >1000 km, and from 3° E to 25° E) and depth-related (1200 m to 2800 m water depth) trends in the macrofaunal abundance, biomass and diversity (i.e., structural and functional diversity), and the influence of the environmental variables on the macrobenthic populations;
- investigate and quantify the macrofaunal β -diversity [60] between: (i) the three basin areas; (ii) the slopes within the same basin; and (iii) stations at different depths.

Materials and Methods

Ethics statement

All of the field activities were approved by the local national authorities. The sampling areas were not privately owned or protected in any way, and no endangered or protected species were involved in this study.

Sampling plan

To achieve our aims, sediment samples were collected from the deep Mediterranean Sea, covering a large spatial scale (over >1000 km) of investigation across different depths (from 1200 m to 2800 m) and longitudes (from 3° E to 25° E). Six cruises (see Table S1 for details) were performed in the Mediterranean Sea on board the R/V Urania (2008–2010), R/V Pelagia (2009) and R/V Meteor (2010), within the framework of the BIOFUN project (“Biodiversity and Ecosystem Functioning in Contrasting Southern European Deep-sea Environments: from viruses to megafauna”), to collect biological and environmental samples from different continental slope systems. The relationship(s) between the macrofauna standing stock and diversity with a number of environmental variables that characterise the investigated areas was assessed. According to the sampling strategy of the BIOFUN project, a total of six selected slopes were chosen along a gradient of increased oligotrophy in the three main Mediterranean basins; i.e., the western (WM; Algero-Provençal basin), central (CM; Ionian Sea) and eastern (EM; northern Levantine basin) Mediterranean basins (see Fig. 1). All of the selected open-slope systems were from topographically regular settings, with well-oxygenated bottom waters. Three of the slopes were in the WM basin (WM-1, Balearic slope 1; WM-2, Balearic slope 2; WM-3, Sardinia slope), two in the CM basin (CM-1, Maltese slope; CM-2, Ionian slope) and one in the EM basin (EM, Cretan slope) (Fig. 1). For each slope, three stations at three different depths were sampled. The three different station depths always fell into three depth ranges: upper bathyal (1200 m), mid-bathyal (from 1800 m to 1900 m), and lower bathyal (from 2400 m to 2700 m). CM-1 was not sampled at the lower bathyal, and was substituted by a station at a depth of 2120 m. At each station and with the employment of cylindrical box-corers (see details below), independent replicate samples were taken for the analyses of the macrobenthos ($n = 3$ replicates), microbial ($n = 3$ replicates) and environmental ($n = 3$ replicates) variables. We selected the heterogeneity of the substrate (grain size), the organic matter content of the sediments, and the prokaryotic abundance and biomass as recognized drivers that influence the benthic fauna distribution and diversity [10,17]. The details of the sampling locations and the environmental features of all of the stations are given in Table 1 and Table S1.

Environmental variable sampling

The near-bottom temperature and salinity were recorded, using a conductivity–temperature–depth (CTD) SBE 911 plus probe mounted on a CTD rosette system (Table 1). To analyse grain size and biochemical composition of the organic matter content, subsamples of sediments from each box-corer were collected using plexiglass cores of 3.6-cm internal diameter. As analysis of the top 1-cm layer has been shown to represent a feasible proxy for the whole trophic status of a sediment [61,62], only the top 1-cm of subsamples was collected and frozen at -20°C , for the analysis of chlorophyll-a, phaeopigment and organic matter content.

Environmental variable sampling

The near-bottom temperature and salinity were recorded, using a conductivity–temperature–depth (CTD) SBE 911 plus probe mounted on a CTD rosette system (Table 1). To analyse grain size and biochemical composition of the organic matter content, subsamples of sediments from each box-corer were collected using plexiglass cores of 3.6-cm internal diameter. As analysis of the top 1-cm layer has been shown to represent a feasible proxy for the whole trophic status of a sediment [61,62], only the top 1-cm of subsamples was collected and frozen at -20°C , for the analysis of chlorophyll-a, phaeopigment and organic matter content.

Grain size

The subsamples for the grain size analysis (the top 20 cm) were preserved at $+4^{\circ}\text{C}$. Aliquots of fresh sediment were sieved over a $63\text{-}\mu\text{m}$ mesh. The two fractions ($>63\text{ }\mu\text{m}$, sand; $<63\text{ }\mu\text{m}$, silt and

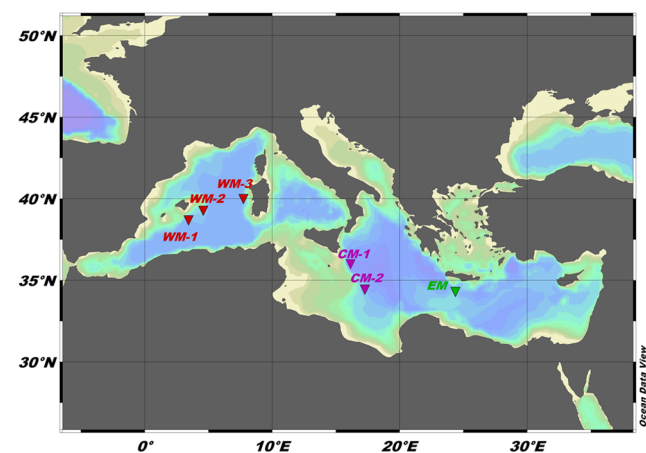


Figure 1. Map of the study area and sampling sites. Red triangles, western Mediterranean basin (WM-1, -2, -3); purple triangles, central Mediterranean basin (CM-1, -2); green triangle, eastern Mediterranean basin (EM). WM-1, Balearic slope 1; WM-2, Balearic slope 2; WM-3, Sardinia slope; CM-1, Maltese slope; CM-2, Ionian slope; EM, Cretan slope.

doi:10.1371/journal.pone.0107261.g001

Table 1. Main characteristics of the sampling slopes studied along the six Mediterranean continental slope areas.

Slope	Water depth (m)	Bottom temperature (°C)	Salinity	POC flux (mgC m ⁻² d ⁻¹)	Sand (%)	Silt (%)
WM-1	1224	13.1	38.5	18.2	9.0	91.0
WM-1	1803	13.2	38.5	11.3	13.8	86.2
WM-1	2362	13.3	38.5	9.0	12.3	87.7
WM-2	1179	13.1	38.5	12.7	6.3	93.7
WM-2	1862	13.2	38.5	8.8	8.9	91.1
WM-2	2758	13.3	38.5	7.4	6.3	93.7
WM-3	1258	13.3	38.5	12.2	8.0	92.0
WM-3	1890	13.2	38.5	8.2	14.1	85.9
WM-3	2448	13.3	38.5	6.1	18.7	81.3
CM-1	1236	13.7	38.7	22.1	3.3	90.5
CM-1	1798	13.7	38.7	14.7	1.3	98.7
CM-1	2120	13.8	38.7	10.9	2.6	97.4
CM-2	1219	13.7	38.6	13.4	14.3	85.7
CM-2	1924	13.7	38.6	6.6	39.9	60.2
CM-2	2693	13.8	38.6	4.6	33.7	66.3
EM	1237	14.7	38.8	11.0	3.6	96.4
EM	1907	14.7	38.8	7.0	10.1	89.9
EM	2766	14.7	38.7	5.1	3.0	97.0

WM, CM, EM, western, central, eastern Mediterranean.

POC, particle organic carbon.

doi:10.1371/journal.pone.0107261.t001

clay) were dried in an oven at 60°C and weighed. Data were expressed as percentages of the total sediment dry weight.

Phytopigment contents and seafloor particulate organic carbon flux

Chlorophyll-a and phaeopigments were determined according to standard techniques [63]. The sum of the chlorophyll-a and phaeopigment concentrations were defined here as chloroplastic pigment equivalents (CPE). The concentrations of these total phytopigments were converted into carbon (C) equivalents using the conversion factor of 40 [64], and expressed as mgC g⁻¹.

Johnson et al. [65] showed that the estimated particulate organic C (POC) flux from the surface represents a good predictor of the benthic standing stock, even at large spatial scales. We extracted the surface primary production data (as mgC m⁻² d⁻¹) from the ocean productivity database (<http://www.science.oregonstate.edu/ocean.productivity/index.php>). These data were used to estimate the flux of C to the seafloor, using Equation (1), as reported in Lutz et al. [66], and introduced by Suess [67]:

$$C_{flux}(z) = C_{prod} / (0.0238z + 0.212), \quad (1)$$

where the C flux to depth C_{flux}(z) is described as a function of the primary production of organic carbon in the surface waters C_{prod}, scaled to the depth below the sea surface, z.

Quantity and biochemical composition of the organic matter

The contents of carbohydrate, protein and lipid were determined according to standard techniques [63]. These concentrations were then converted into C equivalents using the conversion factors of 0.40, 0.49 and 0.75 μgC μg⁻¹, respectively [63], and normalised to the sediment dry weight after desiccation (60°C,

24 h). Biopolymeric organic C (BPC) was calculated as the sum of the C equivalents of carbohydrate, protein and lipid [68]. The contributions of phytopigment C (CCPE) and protein C (CPRT) to the BPC concentrations (CCPE/BPC and CPRT/BPC ratios, respectively) and the protein/carbohydrate (PRT/CHO) ratio were then calculated and used as descriptors of the aging, origin and nutritional quality of the sediment organic matter [62]. PRT/CHO ratios >1.0 indicate relatively high quality and high food availability for the organisms [62].

Prokaryotic abundance and biomass

For the analyses of the prokaryotic abundance and biomass, subsamples of sediments from each box-corer were collected using plexiglass cores of 3.6-cm internal diameter. Circa 1 ml of the wet surface sediment layer (0–1 cm) was fixed using buffered formaldehyde (2% final concentration, in sterile, filtered seawater [v/v]), and stored at 4°C until processed [69].

The total prokaryotic number (TPN) was determined using a staining technique with acridine orange [70], and analysed using epifluorescence microscopy (magnification, 1000×). The total prokaryotic biomass (TPB) was estimated using an ocular micrometer, assigning the prokaryotic cells into different size classes based on their maximum length and width [71]. These were converted to biovolumes on the assumption of an average C content of 310 fgC μm⁻³ [71]. The TPN and TPB were normalised to the sediment dry weight after desiccation (24 h, 60°C).

Macrofaunal sampling

At each station, three independent replicates of undisturbed sediment samples were collected using cylindrical box-corers (Ø 50 cm, WM-2 and CM-2; Ø 32 cm, all other stations). From each box-corer sample, the top 20 cm of the sediment, along with their

overlying water, were gently sieved over a 300- μm mesh sieve to retain all of the macrobenthic organisms [72]. The residual left behind on the sieve was immediately fixed in 10% buffered formalin solution, and stained with Rose Bengal.

Macrofauna abundance, biomass and biodiversity estimation

All multicellular organisms (including Nematoda, Copepoda and Ostracoda; macrofauna *sensu lato*, [73,74]) and Foraminifera that were retained on a 300- μm mesh sieve were sorted under a stereomicroscope, and identified to the lowest possible taxonomic level according to the main literature [59,75–78]. The taxon names of the organisms were cross-checked with the World Register of Marine Species (WoRMS, www.marinespecies.org). For each species the total number was calculated and the wet-weight biomass measured; the number of individuals and weight were expressed as abundance and biomass per square meter. The wet biomass (g wet weight m^{-2}) was converted to ash-free dry weight and organic carbon content using standard conversion factors [79]. In accordance with the literature [59,75,76–78], four major macrofaunal trophic (functional) groups were identified: surface deposit feeders (SDFs), subsurface deposit feeders (SSDFs), carnivores/scavengers, and filter feeders/suspension feeders.

Biodiversity was measured as α -diversity (or ‘sample’ diversity) by calculating several indices: species richness (SR), or total number of species collected in each boxcorer sample; Shannon-Weaner index (H' : \log_2) [80]; and Pielou’s [81] index of equitability (J'). Moreover, the species-abundance data were converted into rarefaction diversity indices ([82], as modified by Hurlbert [83]), and the expected number of species $ES(n)$ for theoretical samples of $n = 30$ and $n = 50$ individuals were calculated for each station. This method of rarefaction provides a good tool for comparisons of species richness among samples that have different total abundances [84]. The number of higher taxonomic groups identified (e.g., Polychaeta, Isopoda, Tanaidacea, Bivalvia, and others) in each of the samples was also considered. To characterise the macrobenthic community structure, the percentage contribution of each of the higher taxonomic groups to the total abundance and biomass was calculated.

The degree of change in the species composition between habitats or along an environmental gradient is usually defined as the turnover (β)-diversity. The macrofaunal turnover diversity between the different depths and longitudes was measured by the dissimilarity coefficients, based on a Bray-Curtis similarities matrix. The statistical differences in the macrofauna composition among all sampling sites was tested by the analysis of similarities (ANOSIM) [85].

Statistical analyses

To test for differences in the patterns of environmental (i.e., temperature, salinity, grain size, quantity and quality of organic matter) and biological (i.e., macrofauna, microbial components) variables between different longitudes and stations at different depths, distance-based permutational multivariate analysis of variance was used (PERMANOVA; [86,87]). The design included two factors: slope location (six levels, fixed, from the west to the east basin) and depth (three levels, fixed). The analysis was based on Euclidean distances of previously normalised data, using 999 random permutations of the appropriate units [88]. The tests were carried out using the permutation of residuals under a reduced model. As there was a restricted number of unique permutations in the pair-wise tests, the p values were obtained from Monte Carlo tests [89]. When significant differences were observed between

stations at different longitudes and/or depths, pair-wise comparisons were also performed.

The β -diversity in the macrobenthic organism composition and trophic structure was estimated: (i) between basins; (ii) between stations at the same depth; (iii) between slopes within the same basin; and (iv) between stations at different depths. The turnover diversity was estimated through Bray-Curtis dissimilarity coefficients. The SIMPER analysis was used to identify the organisms that contributed the most to the dissimilarity between longitudes and depths.

To test for the presence of statistical differences in the macrobenthic organism compositions and functional structures, analysis of similarities (ANOSIM) was performed, as above: (i) between basins; (ii) between stations along the same depth; (iii) between slopes within the same basin; and (iv) between stations at different depths. All of the macrofaunal abundance data were presence/absence transformed prior to the analysis. When significant differences were observed, a non-metric multidimensional scaling ordination was carried out to visualise similarities between basins, slopes and depths along the same slope area. PERMANOVA, ANOSIM, SIMPER and nMDS analyses were performed using the PRIMER version 6 software package [90].

To determine whether the investigated environmental variables influence changes in the macrofaunal standing stock, trophic composition and diversity between basins and between slopes in the same basin, non-parametric multivariate multiple regression analysis was used, with the DISTLM forward routine [87]. The regression analysis was based on Euclidean distances when abundance, biomass and percentage of different trophic groups were considered, and on Bray-Curtis distances when diversity indices were tested. The forward selection of the predictor variables was carried out with tests by permutation. P -values were obtained using 4999 permutations of raw data for the marginal tests (tests of individual variables), while for all of the conditional tests, the routine used 4999 permutations of residuals under a reduced model. Bottom temperature, salinity and grain size were used as environmental parameters. BPC content, phytopigments content, microbial standing stock (i.e., abundance and biomass) and estimates of POC fluxes to the bottom were selected as indicators of food quantity, and the CCPE/BPC, CPRT/BPC, and PRT/CHO ratios as proxies for the quality of the sedimentary organic matter.

Results

Environmental features and trophic state of the sampling sites

The water mass features (temperature, salinity) and sediment grain sizes (sand, silt) are reported in Table 1. The bottom water temperature and salinity increased significantly moving eastwards (pair-wise tests; $p < 0.01$), with values that ranged from 13.1°C and 38.5 for the WM basin to 14.7°C and 38.8 in the EM basin. The dissolved oxygen content ranged between 3.7 ml l^{-1} and 4.8 ml l^{-1} , with the lowest concentration registered in the EM basin at 1200 m in depth, and the highest in the WM basin (WM-1) at 2400 m in depth. Most of the sediment was silt (Table 1, range, 60%–97.4%) at all depths and for all sites. A significantly higher percentage of silt fraction was seen for the CM-1 slope in the central basin, compared to those of the WM basin (pair-wise tests, $p < 0.01$). The variability in the water mass and grain size occurred mainly at different longitudes, while there were no significant changes with depth (Table S2, PERMANOVA results). Significant changes in the quantity of the organic matter (Tables 1, 2, CPE, POC flux, BPC) were detectable at both different longitudes and

different depths (Table S2, PERMANOVA tests). However, the organic matter content did not show any clear increasing or decreasing trends with depth or moving eastwards. The only exception was the POC flux, which clearly declined with increasing depth (pair-wise tests, $p < 0.01$). Relatively high organic matter quantities characterised both the WM (WM-2) and CM (CM-1) basins, compared to the other slope systems (pair-wise tests, $p < 0.05$). Significant changes in the organic matter quality (Table 2, CCPE, CPRT, PRT/CHO ratio) were detected at different longitudes, but not at different depths (Table S2, PERMANOVA tests). In particular, a high organic matter quality was seen for the sediments along the CM-1 slope in the CM basin (pair-wise tests, $p < 0.01$). The prokaryotic standing stock (Table 2, abundance, biomass) varied significantly with longitude and depth (Table S2, PERMANOVA tests), although most of the variability was explained by the effect of longitude (see pseudo-F values, Table S2). The highest values for both the prokaryotic abundance and biomass were seen for the CM basin (i.e., CM-1 slope; pair-wise tests, $p < 0.01$).

Macrofauna abundance, biomass and community structure

The total macrofaunal abundance and biomass are shown in Figure 2 and reported in Table 3. Significantly higher values for the macrobenthic standing stock were seen for two of the slope areas in the WM basin: WM-2 and WM-3 (pair-wise tests, $p < 0.01$, vs. all of the other slopes). Differences in the standing stock with depth were generally seen for all of the slope areas between the shallower stations (1200 m) and the deeper stations (pair-wise tests, $p < 0.05$), except for the WM-1 slope area, where no significant differences between the depths were detected. The PERMANOVA tests carried out on the macrofaunal biomass and abundance showed significant differences according to both longitude and depth (Table S1). Longitude explained most of the variability in the macrofaunal abundance (65%), while both longitude and depth explained the variability in the macrofaunal biomass (32% and 30%, respectively) (Fig. 3).

A total of 22 higher taxa were identified (i.e., Foraminifera, Porifera, Hydrozoa, Scyphozoa, Nematoda, Nemertea, Oligochaeta, Polychaeta, Priapulida, Sipuncula, Echiura, Ostracoda, Copepoda, Cumacea, Tanaidacea, Isopoda, Amphipoda, Aplousobranchia, Scaphopoda, Gastropoda, Bivalvia, Bryozoa), with the highest mean number present of 16 seen for the WM-2 slope (Table 3). The different contributions in terms of the abundance and biomass of the most represented groups are reported in Figure 4 (grouped as Polychaeta, Oligochaeta, Crustacea, Mollusca, Nematoda, Sipuncula, Foraminifera, and others), for all of the slopes investigated. There were clear changes in the community compositions between the slopes at different longitudes, in terms of both abundance (Fig. 4a) and biomass (Fig. 4b). While the WM basin slopes were dominated by a high number of Foraminifera (range, 23%–67%), these were almost completely absent in the other Mediterranean basins. Polychaeta were relatively important in all of the stations, and in EM and CM-1, they were the dominant group (range, 31%–67%). Mollusca (i.e., mostly bivalves) were always at relatively low levels, and these peaked for the Maltese slope (CM-1), with a range of 9% to 21%. Sipuncula (range, 6%–14%), and particularly the macrobenthic Nematoda (range, 16%–40%), showed relatively high abundance along the CM-2 slope; the first group also had a relatively high abundance at the shallowest station, of EM (23%). Crustacea had the highest relative abundance at the CM-1 slope (range, 18%–30%; mostly Isopoda and Tanaidacea) and at the deepest station, of EM (Amphipoda, Ostracoda; 25%). Following these above-

mentioned groups, Hydrozoa was the only other group of importance, but only for the EM slope, with a range of 12%–22%.

Polychaeta contributed the highest biomass for almost all of the stations (Fig. 4b; range, 13%–91%). The four exceptions (Fig. 4b) were: the WM-2 1200-m-deep station, with 61% of the biomass formed by branched Foraminifera; the WM-2 2700-m-deep station, with the bivalve *Nucula* sp.1 forming 31% of the biomass; the CM-2 1200-m-deep station, with the bivalve *Cuspidaria* sp.1 forming 47% of the biomass; and the CM-2 1900-m-deep station, with 90% of the biomass formed by Sipuncula (*Golfingia* spp. and *Phascolosoma* spp.) (Fig. 4b).

There was a significant difference in the community structure among the Mediterranean basins (ANOSIM, $p = 0.001$), but not between the depths. The Bray-Curtis coefficient of dissimilarity detected major changes in the community composition between the WM and CM basins (32%) and between the WM and EM basins (42%). In terms of the biomass contributions, again, significant differences were detected between the WM and CM basins (ANOSIM, $p < 0.05$; dissimilarity coefficient 29%) and between the WM and EM basins (ANOSIM, $p < 0.01$; dissimilarity coefficient 39%), without any differences across the depths.

Macrofaunal α -diversity and trophic composition

The macrofaunal diversity indices are reported in Table 3. A total of 274 macrobenthic organisms were identified (Table S3). Significantly lower macrofaunal α -diversity was reported from the EM basin compared to the WM and CM basins (pair-wise tests, $p < 0.01$). Along all of the slopes, with the sole exception of WM-1, the diversity decreased with depth, and significant differences were detected mostly between the 1200-m-deep stations and the deeper stations (pair-wise tests, $p < 0.05$; Table 3). The macrofaunal α -diversity varied mostly with longitude (67%), and to a lesser degree with depth (8%) (see Fig. 3; Table S2). The variability in the equitability index J' (Fig. 3; Table S2) was along the west-east axis, with significantly higher values for the CM and EM basin slopes compared to the WM basin slopes (pair-wise tests, $p < 0.01$), which is converse to the result for the α -diversity.

The trophic composition of the macrofauna is shown in Figure 5, i.e., for the four major functional groups which we considered. The surface deposit feeders (SDFs), which were mainly represented by Crustacea and Polychaeta, were dominant at all depths and for all of the areas (always $> 40\%$). The contribution of the subsurface deposit feeders (SSDFs), such as the Polychaeta of the families Capitellidae, Fauveliopsidae and Cossuridae, to total abundance decreased moving eastwards (range, 24%–5%), except for the 2700-m-deep station in the EM basin, which did not fit this trend. Carnivores (range, 5%–40%) had a peak in CM-2, which was mainly caused by Polychaeta of the families Eunicidae, Syllidae and Glyceridae, and Nematoda of the genera *Pareurystomina*, *Oncholaimellus*, *Trissonchulus* and *Pheronus*. Filter feeders were more abundant for CM-2 and EM (range, 8%–30%), which was due to small Hydrozoa (Fig. 5). Significant differences in the trophic structure compositions were detected along the longitudinal axis (Table S4), but not between different depths. Indeed, high similarities between the stations at increasing water depths were detected by the SIMPER analysis, which characterised each of the slope areas (range, 77%–96%, in the EM basin and along WM-2). There were major changes in the trophic compositions between the WM basin and the CM and EM basins. Pair-wise comparisons of the WM and CM basins and the WM and EM basins were highly significant, whereas those for the CM and EM basins were not ($p = 0.16$).

Table 2. Organic matter quantity, quality and prokaryotic standing stock.

Slope	Depth (m)	CPE ($\mu\text{g g}^{-1}$)	CCPE/BPC (%)	BPC (mgC g^{-1})	CPRT/BPC (%)	PRT/CHO	TPN (ncell g^{-1})	TPB ($\mu\text{gC g}^{-1}$)
WM-1	1224	0.42±0.18	2.26±0.96	0.73±0.03	25.15±7.38	0.40±0.19	4.06E+07±2.56E+06	0.81±0.05
	1803	0.62±0.01	3.84±0.48	0.66±0.06	23.24±0.71	0.31±0.04	2.53E+07±4.08E+06	0.65±0.13
	2362	0.60±0.09	3.70±0.67	0.65±0.02	17.04±3.32	0.19±0.04	2.85E+07±4.35E+06	0.57±0.09
WM-2	1179	6.19±0.18	11.70±0.77	2.13±0.11	35.30±1.31	0.67±0.07	1.30E+08±8.85E+06	3.46±0.57
	1862	1.98±0.22	6.51±0.51	1.21±0.04	36.68±3.55	0.78±0.15	6.94E+07±1.69E+06	2.82±0.60
WM-3	2758	2.71±0.50	8.82±2.07	1.25±0.08	37.54±4.94	0.96±0.21	1.08E+08±7.80E+06	3.94±0.81
	1258	0.71±0.04	3.72±0.11	0.67±0.10	42.67±8.08	1.11±0.40	8.71E+07±9.41E+06	1.74±0.19
CM-1	1890	1.12±0.08	6.86±1.18	0.68±0.07	34.13±11.40	0.51±0.18	8.67E+07±1.60E+07	1.73±0.32
	2448	0.96±0.17	5.50±1.31	0.80±0.29	40.79±5.70	1.02±0.33	5.94E+07±8.23E+06	1.19±0.16
	1236	4.16±0.34	10.50±1.70	1.64±0.19	50.10±1.41	3.68±0.08	1.64E+08±1.43E+07	5.33±0.26
CM-2	1798	8.35±0.27	23.75±1.01	1.41±0.05	54.86±2.05	2.92±0.21	1.82E+08±1.20E+07	7.61±0.13
	2120	1.63±0.15	5.95±0.72	1.11±0.07	56.32±1.86	2.20±0.32	3.01E+08±4.00E+07	10.58±0.85
EM	1219	1.83±0.19	8.59±0.97	0.85±0.01	28.11±2.68	0.46±0.05	8.45E+07±5.40E+06	1.69±0.11
	1924	2.63±0.69	14.89±4.26	0.72±0.03	39.89±3.37	0.80±0.15	1.60E+08±1.12E+07	3.20±0.22
EM	2693	1.73±0.80	8.64±4.23	0.82±0.03	21.03±2.58	0.29±0.04	1.82E+08±3.31E+07	3.65±0.66
	1237	1.96±0.17	10.34±0.85	0.76±0.03	22.74±3.57	0.26±0.05	5.49E+07±9.43E+06	1.15±0.21
	1907	0.42±0.00	1.93±0.05	0.87±0.03	24.84±1.54	0.40±0.03	8.05E+07±4.07E+06	2.15±0.13
	2766	0.55±0.08	2.20±0.32	1.01±0.04	22.32±0.42	0.31±0.01	1.42E+07±7.76E+05	0.39±0.07

Data are means ± standard deviation.
 CPE, total phytopigments; CCPE/BPC, contribution of phytopigment C to biopolymeric C; BPC, biopolymeric C; CPRT/BPC, contribution of protein C to biopolymeric C; PRT/CHO, protein to carbohydrate ratio; TPN, total prokaryotic abundance; TPB, total prokaryotic biomass.
 doi:10.1371/journal.pone.0107261.t002

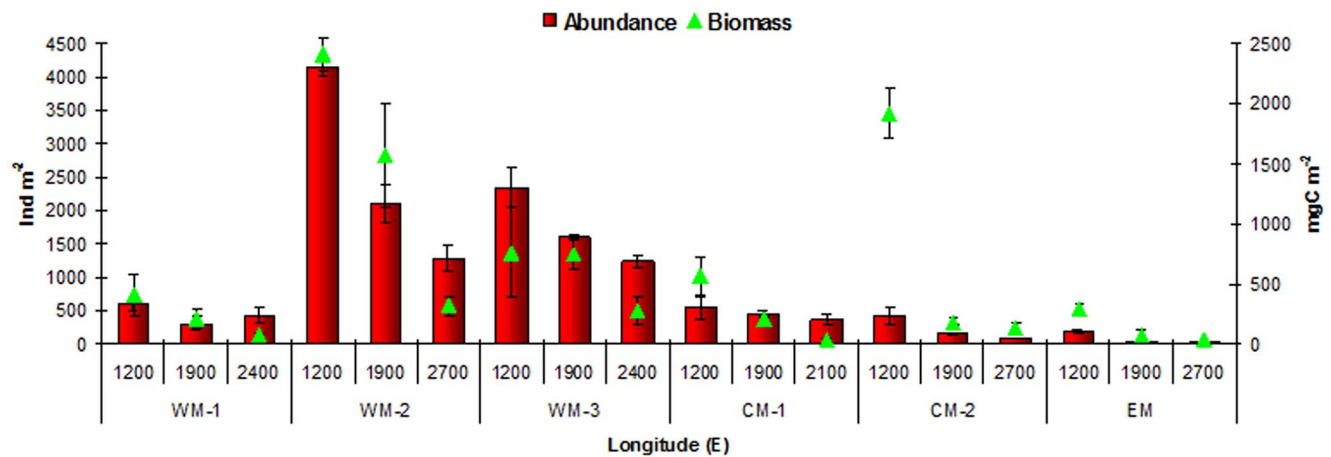


Figure 2. Macrofaunal standing stock. Mean total macrofauna abundance (bars; ind/m²) and biomass (triangles; mgC/m²) for each station in the WM, CM and EM basins. Data are means \pm standard deviation (n=3). doi:10.1371/journal.pone.0107261.g002

β -diversity in the macrofaunal composition: longitudinal and bathymetric trends

Significant differences in β -diversity were found between: (i) the basins (Table S5A); (ii) the slopes of the different basins (Table S5B); and (iii) the slopes within each basin (Table S5C).

The macrobenthic community composition changed significantly also considering stations at different water depths within the same slope system. The main differences were observed between the communities inhabiting the upper bathyal stations and the mid- and deep bathyal stations (Table S6). A high β -diversity emerged at all levels, expressed by the coefficient of dissimilarity values: between basins (from 65% to 82%); between slopes (from 61% to 85%); between slopes within each basin (from 43% to 71%) (Table S5); and between stations at different depths (from 39% to 98%) (Table S6). The largest dissimilarities were seen when the EM basin communities were compared to those of the WM and CM basins. The overall dissimilarity between depths and basins was driven by small contributions of many species (Tables S7A, S7B). In the case of dissimilarities between basins, these species belonged mostly to Polychaete families, such as *Maldanidae* sp1 (1.85%; WM-CM basins), *Cirratulidae* sp1, and *Spionidae* sp1 (both 1.95%; WM and EM basins) and *Paraonidae* sp1 (3.49%; CM and EM basins). The dissimilarities between stations at different depths along the slopes were driven by organisms that belonged to different higher taxa, such as *Bivalvia*, *Sipuncula*, *Foraminifera*, *Polychaeta* and *Tanaidacea*, depending on the slope system considered. The highest contribution came from *Golfingia* sp1, which drove the dissimilarity along the EM slope between both the 1200 m to 1900 m stations (11.09%) and the 1200 m to 2400 m stations (10.69%), which was absent in the two deeper stations. The high rates of turnover diversity were also evident in the nMDS (Fig. 6), which grouped slopes according to longitude and, to a lesser extent, according to depth, at a similarity of only 40% and 20%, respectively. In a multi-dimensional scaling representation, it emerged that slopes at different longitudes and stations at different depths differed in macrofaunal composition. Only a few organisms, 19 of a total of 274 organisms identified (i.e., 7%), were reported for all of the basins (Table S3). Most of these were Polychaeta (such as *Glycera* sp1; *Capitellidae* sp1; *Syllidae* sp1 or *Heterospionidae* sp1), Crustacea (Copepoda); the amphipods *Eusiridae* sp1 and Ostracoda), Nematoda (*Linhystera* sp1 and *Bathyeurystomina* sp1) and Sipuncula (such as *Golfingia*

sp1). The density of these organisms changed from one basin to another, with them being widely represented in one or two basins and less represented in the others. Usually, they reached very low abundances in the EM basin. However, one explanation for this may be that the EM basin was under-sampled compared to the other basins.

Macrofauna relationships with environmental variables

To determine whether and how the environmental features and the trophic state of the system might influence the variability in the macrobenthic communities, multivariate multiple regression analysis (DISTLM forward) was carried out. These data are reported in Figure 7a and Table S8, for all of the slopes investigated, and in Figure 7b–d and Table S9 for each basin separately. Overall the most important factors that influenced the variability of the macrofauna abundance and biomass according to the above-mentioned analyses appeared to be the quantity of the food sources (BPC, 27%; TPN, 6%) and the heterogeneity of the substrate (grain size, 13%; Fig. 7a). The macrofaunal diversity appeared to correlate well not only with the quantity, but also with the quality (i.e., CPRT) of the organic matter in the sediment, and secondly with the grain size. The trophic compositions of the macrobenthic communities were only weakly influenced (range, 15%–26%) by the trophic sources, expressed as the microbial stock and the quality of food (Table S8). However, the high percentages of the variability in abundance, biomass and diversity did not correlate with our environmental variables (Fig. 7, grey).

As the trophic state of the system changed between the basins along the west-east axis, DISTLM forward analyses were also carried out considering each basin separately. Indeed, different drivers might be involved in the variance of the macrofauna distribution and diversity within each basin, compared to the data obtained for the whole of the Mediterranean Sea. Along the WM basin slopes, the macrofauna standing stock and diversity correlated with the quality of the organic matter (i.e., CPRT, PRT/CHO ratio), and to a lesser extent with the microbial abundance (range, 8%–11%) and the grain size (11%) (Fig. 7b; Table S9). Considering the available food, the quantity (i.e., TPN, BPC) and quality (i.e., CCPE) contributed significantly to the variance in the macrofaunal trophic groups, although overall they accounted for a limited amount of the variance (see Fig. 7b; Table S9).

Table 3. Macrofaunal variables.

Slope	Depth (m)	Abundance (Ind m ⁻²)	Biomass (mg m ⁻² WW)	Structural diversity			Shannon H'	Pielou J'	
				N° taxa	SR	ES(30)			
WM-1	1224	600±102	405.9±170.6	8±1	59±5	11±2	19±2	4.17±0.27	0.71±0.01
	1803	314±104	209.8±77.3	6±1	60±3	13±1	24±1	4.90±0.20	0.83±0.01
	2362	434±103	72.5±8.5	5±0	46±1	8±4	16±2	3.22±0.66	0.58±0.16
WM-2	1179	4153±128	2412.8±141.4	16±1	148±3	14±1	25±1	5.25±0.14	0.73±0.02
	1862	2104±287	1567.1±432.8	13±1	96±5	13±2	25±1	5.04±0.17	0.77±0.02
	2758	1281±204	321.9±81.5	14±1	74±3	12±1	21±0	4.48±0.12	0.72±0.02
WM-3	1258	2349±300	765.2±371.1	12±0	97±4	11±1	21±1	4.54±0.14	0.69±0.01
	1890	1615±45	752.1±127.2	10±0	77±2	10±1	18±1	4.13±0.13	0.66±0.02
	2448	1248±88	274.7±106.5	8±1	63±1	8±1	15±1	3.27±0.16	0.55±0.03
CM-1	1236	556±180	565.6±163.9	10±1	51±7	14±4	26±4	5.07±0.44	0.89±0.01
	1798	452±41	207.0±13.2	9±1	46±2	14±1	24±1	4.85±0.14	0.88±0.00
	2120	365±83	40.0±11.9	8±1	37±3	12±2	21±2	4.37±0.27	0.84±0.03
CM-2	1219	438±133	1926.0±215.9	8±1	51±3	14±1	24±2	4.88±0.19	0.86±0.01
	1924	145±13	186.7±27.3	9±0	24±1	10±1	17±1	3.80±0.16	0.83±0.01
EM	2693	84±4	137.5±47.9	5±0	17±1	10±2	15±1	3.62±0.19	0.89±0.01
	1237	199±25	284.7±59.2	4±1	20±0	10±1	16±0	3.71±0.14	0.86±0.03
	1907	37±19	72.5±53.0	2±0	4±0	4±1	-	1.66±0.33	0.83±0.00
	2766	33±8	37.9±16.1	2±0	7±1	7±0	-	2.75±0.32	0.98±0.03

Data are means ± standard deviation.
 WW, wet weight; SR, species richness; ES(30), ES(50), Hulbert indices.
 doi:10.1371/journal.pone.0107261.t003

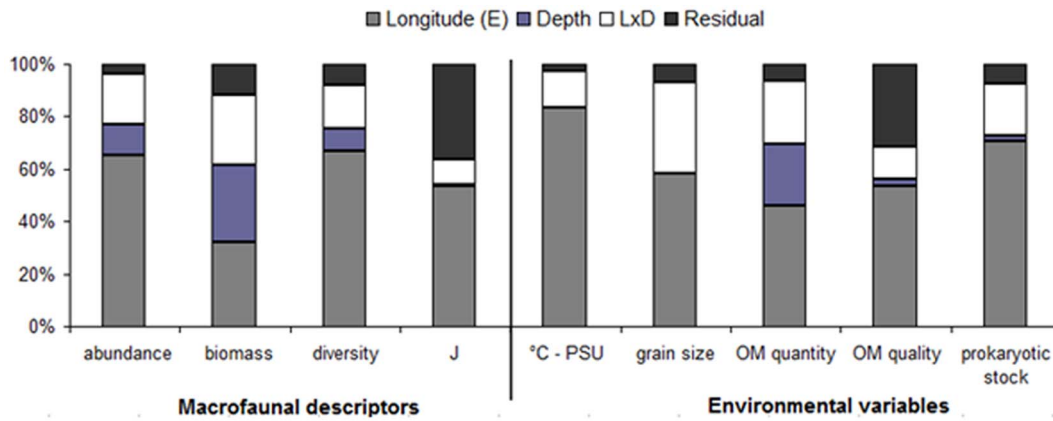
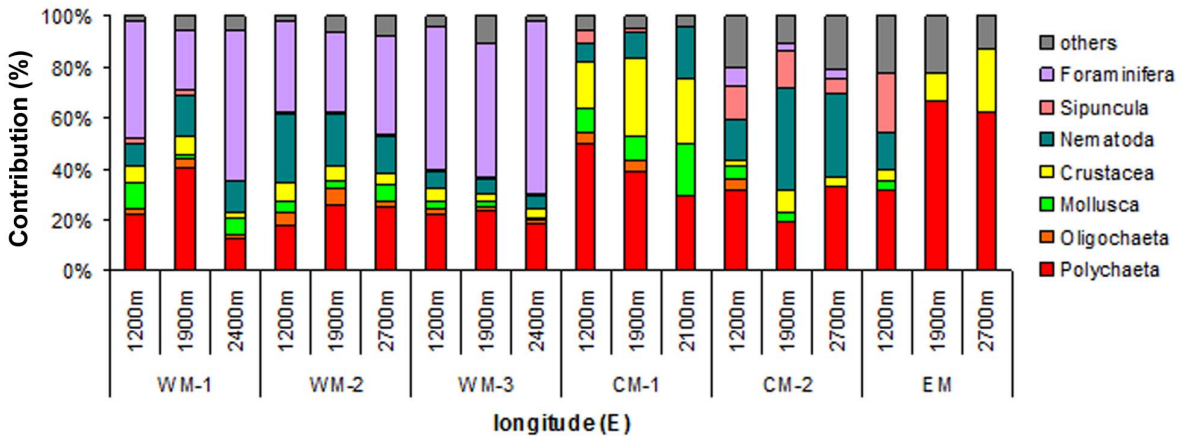


Figure 3. PERMANOVA results. Contributions of the components of variance (longitude, depth, longitude × depth [L×D]) according to the macrofaunal descriptors and the main environmental features. Diversity, macrofaunal diversity (SR, H':log2, Hulbert index); Pielou evenness (J'); bottom temperature (°C); bottom salinity; organic matter (OM); and prokaryotic stock. doi:10.1371/journal.pone.0107261.g003

a)



b)

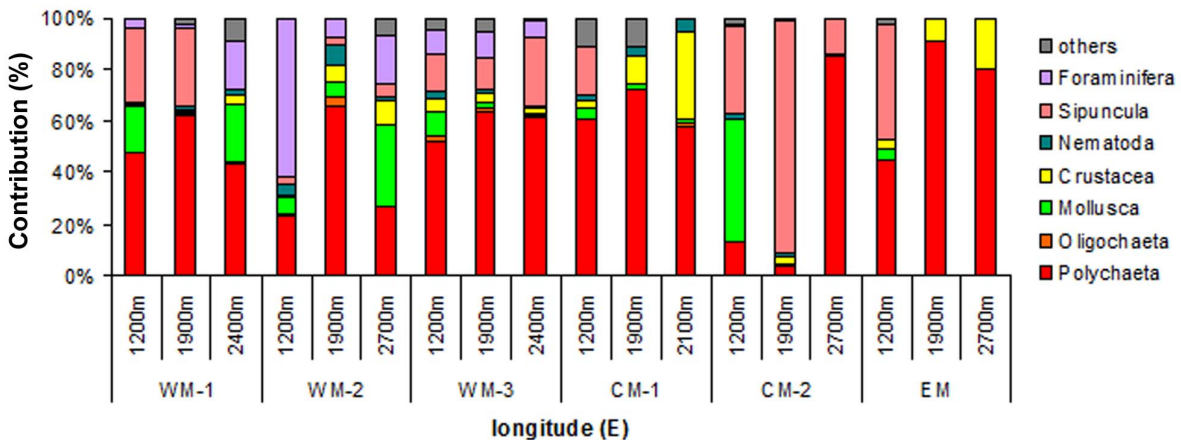


Figure 4. Macrobenthic community structure. Macrofaunal community structure in terms of (a) abundance contribution (%), and (b) biomass contribution (%) of the major taxonomic groups represented in the graphs as Polychaeta, Oligochaeta, Mollusca, Crustacea, Nematoda, Sipuncula, Foraminifera and others, at all of the investigated stations. The group of 'others' includes: Nemertea, Caudofoveata, Porifera, Bryozoa, Hydrozoa, Scyphozoa, Priapulida and Echiura. doi:10.1371/journal.pone.0107261.g004

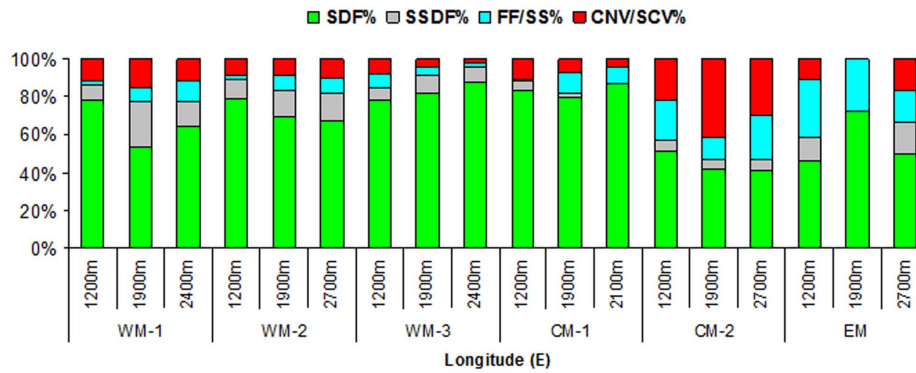


Figure 5. Macrofaunal functional composition. Trophic structure composition as the percentage contribution of each trophic group, from the WM basin to the EM basin and along all of the investigated slope areas. SDF, surface deposit feeder; SSDF, subsurface deposit feeder; FF/SF, filter feeder/suspension feeder; CNV/SCV, carnivore/scavenger; WM, western Mediterranean; CM, central Mediterranean; EM, eastern Mediterranean. doi:10.1371/journal.pone.0107261.g005

In the CM basin, both the quantity (BPC) and quality (CCPRT) of the putative food sources might be drivers for the macrofauna standing stock and diversity variability (Fig. 7c; Table S9). The prokaryotic abundance in the sediment and the POC flux to the sea bottom were highly significantly correlated with the trophic group variability.

In the EM basin, the variance of the macrofaunal stock appeared to be influenced by the quantity of organic matter in the sediment (i.e., BPC). The diversity was correlated to the BPC content and to the heterogeneity of the substrate (Fig. 7d; Table S9). Once again, with the only exception being the SDFs, the variability of the different functional groups was related to the quantity of the available food sources (i.e., BPC, POC flux), and the grain size.

Discussion

Longitudinal and bathymetric trends in the macrofauna abundance, biomass, community and trophic structure

For the deep Mediterranean macrobenthos, there are no comparable datasets in terms of the spatial scale, because almost all of the available information is scattered and often restricted to specific areas (e.g., canyons or a single slope system). Since the investigations conducted in the EM basin from 1989 to 1998 across the continental shelf and at various bathyal depths [4,32,55,91], and the limited set of data for the WM basin collected between 1988 and 1996 and in 2007 [23,26,58], there have been no other more recent studies on the deep Mediterranean macrobenthic infauna. Another point is that sediment has been sieved through mesh sizes ranging from 250 μm to 500 μm for the deep macrofauna. In effect, the discussion among

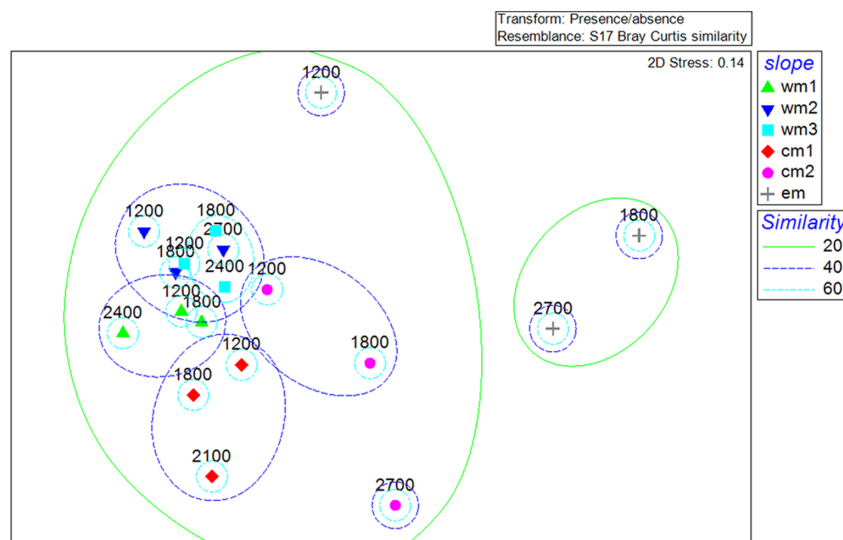


Figure 6. Non-metric multidimensional scaling. Non-metric multidimensional scaling ordination plot based on macrobenthic organisms composition, showing the similarity among the slopes at different longitudes and stations at different depths. wm1, wm2, wm3, WM basin; cm1, cm2, CM basin; em, EM basin. Numbers above symbols indicated station depths. doi:10.1371/journal.pone.0107261.g006

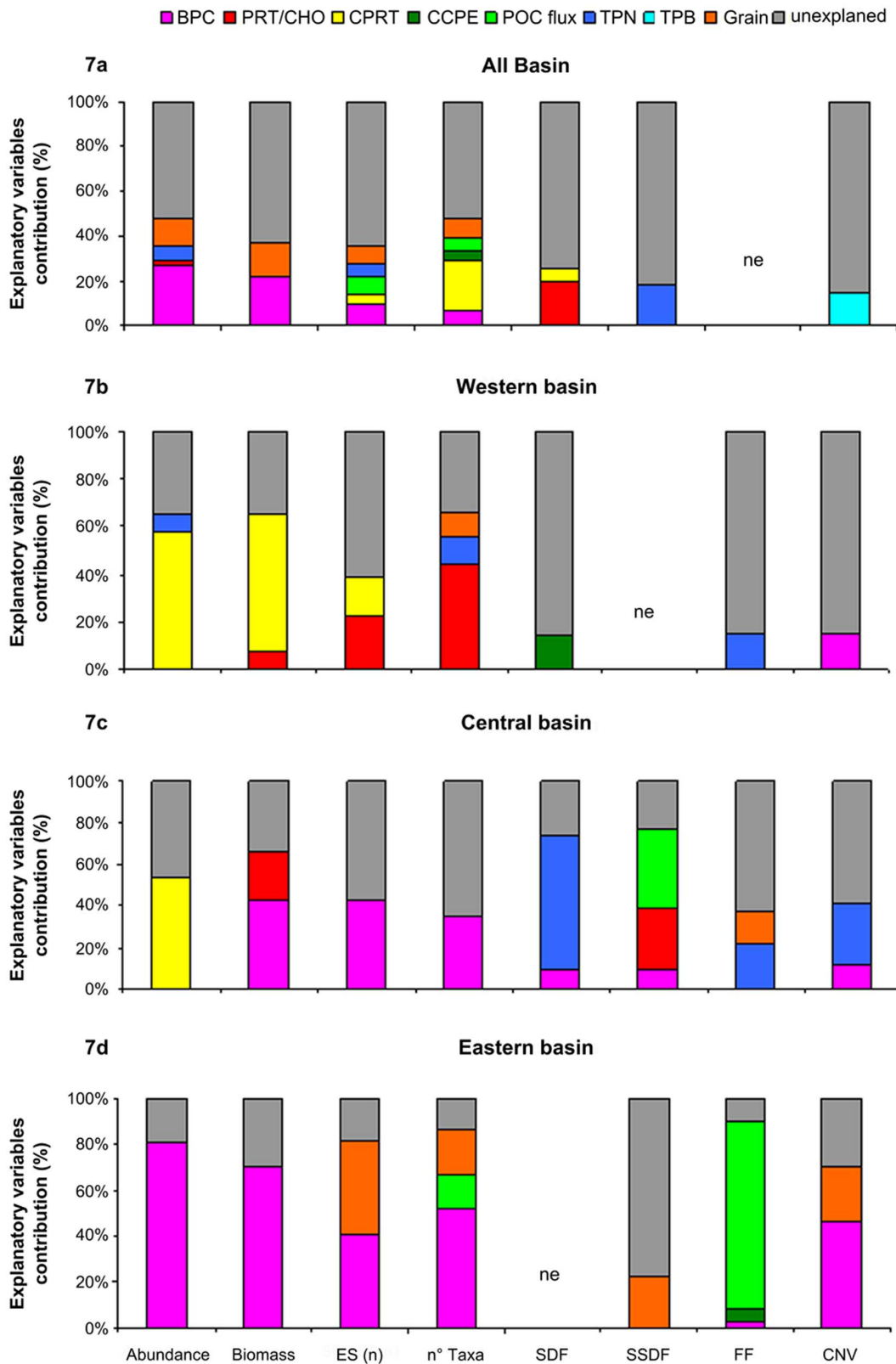


Figure 7. DISTLM forward results. Results of multivariate multiple regression analysis of the macrofaunal abundance, biomass, expected species number (ES(30, 50)), number of taxa, trophic community structure (%SDFs, %SSDFs, %FF/SF, %CNV/SCV), for (a) all of the investigated areas, and for the (b) WM, (c) CM, and (d) EM basins. The contributions are shown for the significant environmental variables (i.e., the explanatory variables) according to the variability of each of the macrofauna descriptors. BPC, biopolymeric organic C; PRT/CHO, protein/carbohydrate ratio; CPRT, protein C; CCPE, phytopygiment C; POC, particulate organic C; TPN, total prokaryotic number; TPB, total prokaryotic biomass; Grain, grain size; ne, not explained.

doi:10.1371/journal.pone.0107261.g007

European scientists in terms of what mesh size to use is still open, as studies in different countries use different mesh sizes [6]. This makes it difficult to directly compare quantitative data on deep-sea macrobenthic fauna from the Mediterranean Sea, and also worldwide.

Previous research within the Mediterranean Sea that included open slope systems has reported a general decline in the abundance and biomass of the benthic fauna (i.e. meiofauna, macrofauna, megafauna) with increasing depth and longitude [4,36,92–94]. One of the main causes of this decreasing trend in macrobenthic standing stock is the increasing oligotrophy of the water masses from the west to the east Mediterranean basin [92,98]. The present study also recorded a decreasing trend in the macrofauna standing stock from the WM to the CM and EM basins, the only exception being the evident drop along the Balearic slope area (WM-1). Similarly, Tselepides et al. [95] reported lower values for the bathyal meiofaunal abundance from the south Balearic Islands area. They suggested that the paucity in the meiobenthic population can be ascribed to the oligotrophy of that area, which is influenced by the food-depleted Liguro-Provençal current. This observation is consistent with the general lower values for the food sources in the present study, which includes the microbial component in WM-1 relatively to WM-2 and WM-3. We can infer that the quantity and quality of the food (expressed as the BPC content) influence the macrobenthic population, as already shown for the Mediterranean Sea and for oceans worldwide [93,99,100], as well as for other benthic components (i.e., megafauna, meiofauna, prokaryotes) [28,95,101].

In the present study, an increase in the water depth was associated with a decrease in the macrobenthic stock, especially in the biomass. Similarly, other studies have reported sharper decreases with depth in the biomass rather than in the number of macrofauna organisms [12,32], which appears to be mainly due to the rapid depletion of the food sources [96,97].

The macrofaunal community composition changed with longitude rather than with depth, such that every slope system is a naturally heterogeneous system, including its fauna population [102]. The group of Polychaeta was not always the most abundant, in contrast to what has been reported in other studies [4,32,57]. In the WM basin, Foraminifera such as *Hoeoglundina elegans*, *Uvigerina mediterranean*, *Ammolagena clavata* and *Truncorotalia* sp. were present in higher levels (range, 23%–67%). Rosso and co-authors [103] found that some of these Foraminifera species were associated with deep-water corals from Santa Maria di Leuca (Italy); however, most other studies conducted in the Mediterranean Sea have excluded this group in macrobenthic studies [58,103]. However, the Foraminifera can be an abundant and widespread component of deep-sea benthic populations, and they cover specific functional roles [104–107].

The other abundant groups found, such as Crustacea, Bivalvia, macrobenthic Nematoda and Sipuncula, have often been reported as important and diversified [34,49,50,53] components of the Mediterranean bathyal fauna [4,58], and of other seas [108,109]. The identified Amphipoda families (e.g., Eusiridae, Phoxocephalidae, Lyssianassidae) and the species *Harpinia truncata* and *Paracentromedon crenulatum* usually inhabit the WM basin and the EM basin [51,53], as well as for the Cumacea genera and the species recognized (e.g., *Cyclaspis longicaudata*, *Diastylodes bacescoi*, *Diastylodes serratus*) [49,50,52,54]. A large contribution of Sipuncula, particularly in terms of biomass, was also documented by Cosson et al. [25] in their comparison of stations at increasing oligotrophy in the Atlantic Ocean. The Sipuncula can catch and bury food deeper in the sediment, in this way they

can cope with conditions of low food sources [110]. Nematoda occurred widely from the WM basin to the EM basin slope areas. This is another group that has rarely been included in macrofauna studies [4,26,111], because it is considered an exclusively meiofaunal taxon [18]. They cover different functional roles and represent an important and distinct assemblage in the macrobenthos [111] and in comparison with nematodes from meiofauna. Indeed, with the sole exception of the highly represented genus *Halalaimus* also in our samples, the most abundant meiobenthic nematode genera reported by Pape et al. [29] (e.g. *Acantholaimus*, *Amphimonistrella*, *Monhystrella*, *Neochromadora*) were rarely or never found in our macrobenthic samples.

The trophic structure of a population can provide information on the trophic status of a system, and on the structural complexity of a community [32]. The dominance of SDF, followed by SSDF, for all of our slopes and depths confirms that the deposit feeding mode is one of the best feeding strategies in environments that generally have low food sources, such as the deep sea [105,112]. Major changes in the trophic structure composition occurred moving eastwards, where the contributions of carnivores/scavengers and filter feeders gained importance, as reported previously [4,32]. The carnivore/scavenger feeding mode is considered advantageous in a nutrient-limited environment, as their mobility is necessary to locate the more scarce food sources [4,114]. The number of carnivores in our study substantially increased by including the many predatory/omnivore genera of large-sized Nematoda, as has been documented in other areas where food is relatively scarce [111,115]. The relatively high percentage of filter feeders/suspension feeders in the EM basin, which was also reported by Tselepides et al. [32], was explained by Kröncke et al. [4] in terms of the large-scale hydrodynamic features of the open basin (e.g., lateral transport of organic material from coastal regions). The link between the filter feeders/suspension feeders group and the organic carbon fluxes was confirmed by the strong correlation observed between these filter feeders/suspension feeders and the POC flux in the EM slope area.

Overall, the data in the present study show that the trophic diversity of the Mediterranean macrobenthic populations might be influenced only partially by food availability and the heterogeneity of the substrate (range, 15% to 26%). However, it has been noted [22,105] that correlations between food availability and feeding strategies of benthic organisms might be more the result of a combination of factors (e.g. hydrodynamic conditions, small-scale physical events), which can influence the availability of food sources for the benthic populations. Even though the communities in the WM basin appeared to be less affected by food availability, this appears to have an important role in the CM and EM basins for the determination of the functional structure of the macrofauna [55,58]. In the CM basin, the highest microbial and organic matter qualities were reported, which may point to the influence of the available food on the macrofaunal trophic structure, and in particular, of the grazing activity of the macrofauna on the microbial organisms [113].

Macrofaunal α -diversity versus β -diversity

For the Mediterranean Sea, the species diversity from meiofauna to megafauna has been reported to show an overall decline both with increasing water depth and with longitude, even though some exceptions have been observed [98]. Patterns in the faunal biodiversity are usually ascribed to a decrease in food availability with increasing water depth, and in the case of the Mediterranean Sea, also with an eastwards trend in food sources [20].

Our data confirm the longitudinal decreasing trend in macrofaunal species richness from west to east and with depth for the Mediterranean Sea, along all of the slopes investigated. The food availability and heterogeneity of the substrate appear to influence the diversity of the macrofauna (i.e., ES(30, 50), number of taxa), especially when the effects of these variables are tested within each basin of the Mediterranean Sea. The potential drivers that are usually mentioned to explain patterns in faunal biodiversity (i.e., food availability, sediment grain size) have important roles also in the present study, particularly at a within-basin spatial scale. Indeed, some drivers act differently, but simultaneously, on smaller or larger spatial scales, where they might often be hidden by the effects of depth, longitude and/or latitude [8,84,116,117]. The equitability index (J) showed an opposite trend to that of the diversity indices. This means that moving eastwards, the dominance of some Foraminifera (e.g., *Uvigerina mediterranea*) and Polychaeta (e.g., Cirratulidae, Fauveliopsidae) disappeared.

It has been demonstrated that a simple analysis of local α -diversity is not enough to evaluate the biogeographic differences in deep-sea species compositions, and therefore does not provide a real picture of the biodiversity that characterises different systems, as well as the factors that control them [85,118]. Here we have quantified for the first time the deep Mediterranean basin β -diversity of macrofauna across different depths and longitudes. While the α -diversity showed significant differences between the WM, CM and EM basins and some variability along the bathymetric gradient, the β -diversity revealed large changes in the macrobenthic organism compositions at the different levels: (i) between the basins and slopes; (ii) between the slopes within the same basin; and (iii) at different depths. No clear spatial overlap emerged between slope systems or depths. In contrast to what was reported by Vanreusel et al. [119], but similar to the findings of Serpetti et al. [109], the organisms that generated the high rates of turnover diversity were not necessarily organisms that were dominant along one slope or at one particular depth. The low overlap in the species compositions can be ascribed to the high habitat heterogeneity that is typically reported for the continental margins [19]. The reasons for this heterogeneity might include differences in food supply, substrate heterogeneity, hydrological features and/or geographic position [8].

The high macrofauna β -diversity is comparable to that reported for nematodes [31,120] and for megafauna [36], which demonstrates a highly variable macrofauna composition at different longitudes and depths. For this reason, we can hypothesise that macrofaunal biodiversity is determined locally (i.e., on smaller spatial scales), and even more, regionally (i.e., on larger spatial scales). This is in agreement with findings reported for other benthic compartments, and it indicates that each region in the Mediterranean Sea can be distinguished according to the presence of a specific assemblage and species composition.

Conclusions

From our large spatial scale investigation of the macrofauna that inhabit the deep Mediterranean Sea, it has emerged that:

- The macrobenthic abundance and biomass show a general longitudinal decreasing trend from the WM basin to the EM basin. Biomass, rather than abundance, is negatively affected by increasing water depth;
 - The macrobenthic community and trophic structure change significantly with longitude; there were no significant changes here between depths;
 - The macrofaunal standing stock, diversity and trophic structure are differently influenced by the quantity and quality of the food sources and the habitat features (e.g., grain size), which depend on the basin or slope system investigated. From our analysis, we can infer that the influence of the food source or substrate heterogeneity on the benthic fauna might be modulated or partially masked by the multiplicity of interactions between 'local' ecological characteristics and environmental factors, as opposed to those considered here, for each specific basin and/or slope environment;
 - The high β -diversity through the Mediterranean basins and for different depths suggests notable large (i.e., between basins) and smaller (i.e., across depths along the same slope system) spatial scale diversity in the macrofauna composition that is not detectable by estimating the α -diversity alone.
- The present study also highlighted the following gaps in the study of the deep Mediterranean Sea macrofauna:
- A lack of recent comparable datasets (e.g., for standing stock, α -diversity, β -diversity) on large spatial scales;
 - A lack of a unified sampling technique for the macrobenthos;
 - The *a-priori* exclusion of some organisms, such as macrobenthic Foraminifera and Nematoda, even though they often constitute an important and distinct component of the macrobenthos, in terms of their abundance, biomass, and structural and functional diversity.

Supporting Information

Table S1 Sampling details.

(DOC)

Table S2 PERMANOVA results carried out to ascertain multivariate differences in environmental features, prokaryotes and macrofauna at different longitudes and depths.

(DOC)

Table S3 List of the identified macrobenthic organisms.

(DOC)

Table S4 Dissimilarity in trophic groups composition between basins and variables responsible for the estimated differences.

(DOC)

Table S5 Dissimilarities in macrobenthic organisms composition between all investigated A) basins; B) slopes; C) slopes within each basin.

(DOC)

Table S6 Dissimilarities in the macrofaunal organisms composition between depths at all investigated slopes, from west to east basin.

(DOC)

Table S7 A) Contribution of macrobenthic organisms responsible for the dissimilarity between depths. B) Contribution of macrobenthic organisms responsible for the dissimilarity between basin.

(DOC)

Table S8 Results of the multivariate multiple regression analysis carried out on the macrofaunal descriptors.

(DOC)

Table S9 Results of the multivariate multiple regression analysis carried out separately in the western, central and eastern basins on the macrofaunal descriptors.

(DOC)

Acknowledgments

The authors are indebted to the crews of the ships R/V Pelagia (The Netherlands), R/V Urania (Italy) and R/V Meteor (Germany) for their valuable help during the sampling activities. We acknowledge constructive criticism of the reviewers that helped us to significantly improve an early version of our manuscript.

References

- Arvanitidis C, Bellan G, Drakopoulos P, Valavanis V, Dounas C, et al. (2002) Seascape biodiversity patterns along the Mediterranean and the Black Sea: lessons from the biogeography of benthic polychaetes. *Mar Ecol Prog Ser* 244: 139–152.
- Tittensor DP, Mora C, Jetz W, Lotze HK, Ricard D, et al. (2010) Global patterns and predictors of marine biodiversity across taxa. *Nature* 466: 1098–1101.
- Beaugrand G, Rombouts I, Kirby RR (2013) Towards an understanding of the pattern of biodiversity in the oceans. *Glob Ecol Biogeogr* 22: 440–449.
- Kröncke I, Turkey M, Fiege D (2003) Macrofauna Communities in the Eastern Mediterranean Deep Sea. *Mar Ecol* 24: 193–216.
- Gambi C, Lampadariou N, Danovaro R (2010) Latitudinal, longitudinal and bathymetric patterns of abundance, biomass of metazoan meiofauna: importance of the rare taxa and anomalies in the deep Mediterranean Sea. *Adv Oceanogr Limnol* 1: 167–197.
- Narayanaswamy BE, Renaud PE, Duineveld GCA, Berge J, Lavaleye MSS, et al. (2010) Biodiversity trends along the western European margin. *PLoS One* 5: e14295.
- Leduc D, Rowden A, Bowden D, Nodder S, Probert P, et al. (2012) Nematode beta diversity on the continental slope of New Zealand: spatial patterns and environmental drivers. *Mar Ecol Prog Ser* 454: 37–52.
- Levin LA, Etter RJ, Rex MA, Gooday J, Smith CR, et al. (2001) Environmental influences on regional deep-sea species diversity. *Annu Rev Ecol Syst* 32: 51–93.
- Rex MA, McClain CR, Johnson NA, Etter RJ, Allen JA, et al. (2005) A source-sink hypothesis for abyssal biodiversity. *Am Nat* 165: 163–178.
- Ramirez-Llodra E, Brandt A, Danovaro R, De Mol B, Escobar E, et al. (2010) Deep, diverse and definitely different: unique attributes of the world's largest ecosystem. *Biogeosciences* 7: 2851–2899.
- Carney RS (2005) Zonation of deep biota on continental margins. *Oceanogr Mar Biol Annu Rev* 43: 211–278.
- Rex M, Etter R, Morris J, Crouse J, McClain C, et al. (2006) Global bathymetric patterns of standing stock and body size in the deep-sea benthos. *Mar Ecol Prog Ser* 317: 1–8.
- Galéron J, Sibuet M, Mahaut M, Dinert A (2000) Variation in structure and biomass of the benthic communities at three contrasting sites in the tropical Northeast Atlantic. *Mar Ecol Prog Ser* 197: 121–137.
- Hughes DJ, Gage JD (2004) Benthic metazoan biomass, community structure and bioturbation at three contrasting deep-water sites on the northwest European continental margin. *Prog Oceanogr* 63: 29–55.
- Pavithran S, Ingole BS, Nanajkar M, Raghukumar C (2009) Composition of macrobenthos from the central Indian Ocean Basin. *J Earth Syst Sci* 118: 689–700.
- Rex MA (1981) Community structure in the deep-sea benthos. *Annu Rev Ecol Syst* 12: 331–353.
- Levin LA, Gage JD (1998) Relationships between oxygen, organic matter and diversity of bathyal macrofauna. *Deep Sea Res Part II* 45: 129–163.
- Flach E, Vanaverbeke J, Heip C (1999) The meiofauna:macrofauna ratio across the continental slope of the Goban Spur (north-east Atlantic). *J Mar Biol Assoc UK* 79: 233–241.
- Levin LA, Sibuet M (2012) Understanding Continental Margin Biodiversity: A New Imperative. *Ann Rev Mar Sci* 4: 79–112.
- Snelgrove PVR, Smith CR (2002) A riot of species in an environmental calm: the paradox of the species-rich deep-sea floor. *Oceanogr Mar Biol* 40: 311–342.
- Etter RJ, Grassle JF (1992) Patterns of species diversity in the deep sea as a function of sediment particle size diversity. *Nature* 360: 576–578.
- Leduc D, Rowden AA, Probert PK, Pilditch CA, Nodder SD, et al. (2012) Further evidence for the effect of particle-size diversity on deep-sea benthic biodiversity. *Deep Sea Res Part I* 63: 164–169.
- Tahey TM, Duineveld GCA, Berghuis EM, Helder W (1994) Relation between sediment-water fluxes of oxygen and silicate and faunal abundance at continental shelf, slope and deep-water stations in the northwest Mediterranean. *Mar Ecol Prog Ser* 104: 119–130.
- Tyler PA (2003) The peripheral deep seas. *Ecosystems of the world*. Amsterdam: Elsevier. pp. 261–293.
- Cosson N, Sibuet M, Galéron J (1997) Community structure and spatial heterogeneity of the deep-sea macrofauna at three contrasting stations in the tropical northeast Atlantic. *Deep Sea Res Part I* 44: 247–269.
- Mamouridis V, Cartes JE, Parra S, Fanelli E, Saiz Salinas JI (2011) A temporal analysis on the dynamics of deep-sea macrofauna: Influence of environmental variability off Catalonia coasts (western Mediterranean). *Deep Sea Res Part I* 58: 323–337.

Author Contributions

Conceived and designed the experiments: EB EM ML SA. Performed the experiments: EB EM ML. Analyzed the data: EB EM. Contributed reagents/materials/analysis tools: EB EM ML. Wrote the paper: EB EM ML SA AC.

- Corliss BH, Brown CW, Sun X, Showers WJ (2009) Deep-sea benthic diversity linked to seasonality of pelagic productivity. *Deep Sea Res Part I* 56: 835–841.
- Cartes JE, Maynou F, Fanelli E, Romano C, Mamouridis V, et al. (2009) The distribution of megabenthic, invertebrate epifauna in the Balearic Basin (western Mediterranean) between 400 and 2300 m: Environmental gradients influencing assemblages composition and biomass trends. *J Sea Res* 61: 244–257.
- Pape E, Jones DOB, Manini E, Bezerra TN, Vanreusel A (2013) Benthic-pelagic coupling: effects on nematode communities along southern European continental margins. *PLoS One* 8: e59954.
- Hasemann C, Soltwedel T (2011) Small-scale heterogeneity in deep-sea nematode communities around biogenic structures. *PLoS One* 6: e29152.
- Danovaro R, Gambi C, Lampadariou N, Tselepidis A (2008) Deep-sea nematode biodiversity in the Mediterranean basin: testing for longitudinal, bathymetric and energetic gradients. *Ecography* 31: 231–244.
- Tselepidis A, Papadopoulou K-N, Podaras D, Plaiti W, Koutsoubas D (2000) Macrobenthic community structure over the continental margin of Crete (South Aegean Sea, NE Mediterranean). *Prog Oceanogr* 46: 401–428.
- Cartes J, Maynou F, Sardà F, Company J, Lloris D, et al. (2004) The Mediterranean deep-sea ecosystem. Part I. An overview of their diversity, structure, functioning and anthropogenic impacts. In: *The Mediterranean deep-sea ecosystems: an overview of their diversity, structure, functioning and anthropogenic impacts, with a proposal for conservation*. pp. 9–38.
- Galil BS (2004) The limit of the sea: the bathyal fauna of the Levantine Sea. *Sci Mar* 68: 63–72.
- Company JB, Maiorano P, Tselepidis A, Politou C, Plaiti W, et al. (2004) Deep-sea decapod crustaceans in the western and central Mediterranean Sea: preliminary aspects of species distribution, biomass and population structure. *Sci Mar* 68: 73–86.
- Tecchio S, Ramirez-Llodra E, Sardà F, Company J, Palomera I, et al. (2011) Drivers of deep Mediterranean megabenthos communities along longitudinal and bathymetric gradients. *Mar Ecol Prog Ser* 439: 181–192.
- D'Ortenzio F, d'Alcal MR (2009) On the trophic regimes of the Mediterranean Sea: a satellite analysis. *Biogeosciences* 6: 139–148.
- Santinelli C, Sempère R, Van Wambeke F, Charriere B, Seritti A (2012) Organic carbon dynamics in the Mediterranean Sea: An integrated study. *Global Biogeochem Cycles* 26: 1–13.
- Danovaro R, Company JB, Corinaldesi C, D'Onghia G, Galil B, et al. (2010) Deep-sea biodiversity in the Mediterranean Sea: the known, the unknown, and the unknowable. *PLoS One* 5: e11832.
- Fredj J, Laubier L (1985) The deep Mediterranean benthos. *Mediterranean marine ecosystems*. New York: Plenum Press. pp. 109–146.
- Carpine C (1970) Écologie de l'étage bathyal dans la Méditerranée occidentale. *Mémoires de l'Institut océanographique, Monaco* 2: 146 p.
- Vamvakas CNE (1970) Peuplements benthiques des substrats meubles du sud de la mer Egée. *Tethys* 2: 89–130.
- Laubier L, Picard C, Ramos J (1973) Les heterosponidae (Annélides polychètes sédentaires) de Méditerranée occidentale. *Vie Milieu* 23: 243–254.
- Chardy P, Laubier L, Reyss D, Sibuet M (1973) Dragages profonds en mer Egée - données préliminaires (1). *Rapp Comm int Mer Médit* 22: 107–108.
- Chardy P (1974) Deux especes nouvelles d'isopodes asellotes récoltées en méditerranée profonde. *Vie Milieu* 24: 409–420.
- Wagele JW (1980) Anthuridea (Crustacea, Isopoda) aus dem Tyrrhenischen Meer. *Zool Scr* 9: 53–66.
- Gutu M (2001) Appearance and reality in the knowledge of the tanaidacean crustaceans from the Mediterranean basin. *Trav du Muséum Nat d'Histoire Nat* 43: 59–63.
- Gutu M (2002) Contributions to the knowledge of the genus *Apseudes* Leach, 1814 (Crustacea: Tanaidacea, Apsuodomorpha) from the Mediterranean basin and the North African Atlantic. *Trav du Muséum Nat d'Histoire Nat* 44: 19–39.
- Reyss D (1972) Résultats scientifiques de la campagne du N.O. "Jean Charcot" en Méditerranée occidentale, Mai-Juin-Juillet 1970. *Cumacés*. *Crustaceana Suppl. III*: 362–377.
- Reyss D (1974) Cumacés. Résultats scientifiques de la campagne "Polymède II" du N.O. "Jean Charcot" en Mer Ionienne et en Mer Egée (Avril-Mai 1972). *Crustaceana* 27: 275–282.
- Cartes JE, Sorbe JC (1993) Les Communautés suprabenthiques bathyales de la mer Catalane (Méditerranée occidentale): données préliminaires sur la répartition bathymétrique et l'abondance des crustacés pécarcarides. *Crustaceana* 64: 155–170.

52. Corbera J, Galil BS (2001) Cumaceans (Crustacea, Peracarida) from the lower slope of the northern Israel coast, with a discussion on the status of *Platysympus typicus*. *Isr J Zool* 47: 135–146.
53. Sorbe JC, Galil BS (2002) The Bathyal Amphipoda Off the Levantine Coast, Eastern Mediterranean. *Crustaceana* 75: 957–968.
54. Muhlenhardt-Siegel U (2009) Cumacea (Crustacea, Peracarida) in the deep Mediterranean, with the description of one new species. *Zootaxa* 2096: 413–432.
55. Tselepidis A, Eleftheriou A (1992) South aegean (eastern mediterranean) continental slope benthos: macroinfaunal - environmental relationships. Deep-Sea food chains and the global carbon cycle. Kluwer Academic Publishers. pp. 139–156.
56. Basso D, Thomson J, Corselli C (2004) Indications of low macrobenthic activity in the deep sediments of the eastern Mediterranean Sea. *Sci Mar* 68: 53–62.
57. Gerino M, Stora G, Poydenot F, Bourcier M (1995) Benthic fauna and bioturbation on the Mediterranean continental slope: Toulon Canyon. *Cont Shelf Res* 15: 1483–1496.
58. Stora G, Bourcier M, Arnoux A, Gerino M, Campion J Le, et al. (1999) The deep-sea macrobenthos on the continental slope of the northwestern Mediterranean Sea: a quantitative approach. *Deep Sea Res Part I* 46: 1339–1368.
59. Gage JD, Tyler PA (1991) Deep-Sea biology: A natural history of organisms at the deep sea floor. Cambridge, UK: Cambridge University Press. 493 p.
60. Anderson MJ, Crist TO, Chase JM, Vellend M, Inouye BD, et al. (2011) Navigating the multiple meanings of β diversity: a roadmap for the practicing ecologist. *Ecol Lett* 14: 19–28.
61. Pusceddu A, Dell'Anno A, Fabiano M, Danovaro R (2009) Quantity and bioavailability of sediment organic matter as signatures of benthic trophic status. *Mar Ecol Prog Ser* 375: 41–52.
62. Pusceddu A, Bianchelli S, Canals M, Sanchez-Vidal A, Durrieu De Madron X, et al. (2010) Organic matter in sediments of canyons and open slopes of the Portuguese, Catalan, Southern Adriatic and Cretan Sea margins. *Deep Sea Res Part I Oceanogr Res Pap* 57: 441–457.
63. Danovaro R (2010) Methods for the study of deep-sea sediments, their functioning and biodiversity. Section V. Deep-sea benthic functioning. Taylor and. New york. 162 p.
64. De Jonge VN (1980) Fluctuations in the Organic Carbon to Chlorophyll a Ratios for Estuarine Benthic Diatom Populations. *Mar Ecol Prog Ser* 2: 345–353.
65. Johnson NA, Campbell JW, Moore TS, Rex MA, Etter RJ, et al. (2007) The relationship between the standing stock of deep-sea macrobenthos and surface production in the western North Atlantic. *Deep Sea Res Part I* 54: 1350–1360.
66. Lutz M, Dunbar R, Caldeira K (2002) Regional variability in the vertical flux of particulate organic carbon in the ocean interior. *Global Biogeochem Cycles* 16: 1–18.
67. Suess E (1980) Particulate organic carbon flux in the oceans: surface productivity and oxygen utilization. *Nature* 288: 260–263.
68. Fabiano M, Danovaro R, Fraschetti S (1995) A three-year time series of elemental and biochemical composition of organic matter in subtidal sandy sediments of the Ligurian Sea (northwestern Mediterranean). *Cont Shelf Res* 15: 1453–1469.
69. Manini E, Danovaro R (2006) Synoptic determination of living/dead and active/dormant bacterial fractions in marine sediments. *FEMS Microbiol Ecol* 55: 416–423.
70. Luna GM, Manini E, Danovaro R (2002) Large Fraction of Dead and Inactive Bacteria in Coastal Marine Sediments: Comparison of Protocols for Determination and Ecological Significance. *Appl Environ Microbiol* 68: 3509–3513.
71. Fry JC (1990) Determination of biomass. *Methods in aquatic bacteriology*. New york: John Wiley & Sons. pp. 27–72.
72. Pavithran S, Ingole B, Nanajkar M, Goltekar R (2009) Importance of sieve size in deep-sea macrobenthic studies. *Mar Biol Res* 5: 391–398.
73. Gray JS (1994) Is deep-sea species diversity really so high? Species diversity of the Norwegian continental shelf. *Mar Ecol Prog Ser* 112: 205–209.
74. Dinet A, Desbruyères D, Khrpounoff A (1985) Abondance des peuplements macro- et meio-benthiques: répartition et stratégie d'échantillonnage. In: Laubier L, Monniot C, editors. *Peuplements profonds du golfe de Gascogne*. Brest: Institut Française de Recherche pour l'Exploitation de la Mer. pp. 121–142.
75. Sars GO (1882) An account of crustacea of Norway with short description and figures of all the species. Bergen: The Bergn Museum. 255 p.
76. Norman AN, Stebbing TRR (1889) On the crustacea isopoda of the lightning. Porcupine and valorous expeditions. Washington: Smithsonian Institution. 141 p.
77. Romero-Wetzel MB (1987) Sipunculans as inhabitants of very deep, narrow burrows in the deep-sea sediments. *Mar Biol* 96: 87–91.
78. Fauchald K, Jumars PA (1979) The diet of worms: a study of polychaete feeding guilds. *Ocean Mar Biol Ann Rev* 17: 193–284.
79. Rowe GT (1983) Deep-sea biology. New york: John Wiley & Sons. 565 p.
80. Shannon CE, Weaver W (1949) The mathematical Theory of communication. Urbana, IL: University of Illinois.
81. Pielou EC (1975) Ecological diversity. New york: Wily. 165 p.
82. Sanders HL (1968) Marine benthic diversity: A comparative study. *Am Nat* 102: 243–282.
83. Hurlbert SH (1971) The Nonconcept of Species Diversity: A Critique and Alternative Parameters. *Ecology* 52: 577–586.
84. Gage JD, Lamont PA, Kroeger K, Paterson GLJ, Gonzalez Vecino JL (2000) Patterns in deep-sea macrobenthos at the continental margin: standing crop, diversity and faunal change on the continental slope off Scotland. *Hydrobiologia* 440: 261–271.
85. Gray JS (2000) The measurement of marine species diversity, with an application to the benthic fauna of the Norwegian continental shelf. *J Exp Mar Bio Ecol* 250: 23–49.
86. Anderson MJ (2001) A new method for non-parametric multivariate analysis of variance. *Austral Ecol* 26: 32–46.
87. McArdle BH, Anderson MJ (2001) Fitting multivariate models to community fitting multivariate models to community data: a comment on distance-based redundancy analysis. *Ecology* 82: 290–297.
88. Anderson MJ, ter Braak CJF (2003) Permutation tests for multi-factorial analysis of variance. *J Stat Comput Simul* 73: 85–113.
89. Anderson MJ, Robinson J (2003) Generalized discriminant analysis based on distances. *Aust NZJ Stat* 45: 301–318.
90. Clarke KR, Gorley RN (2006) PRIMER v6: User Manual/Tutorial. PRIMER-E. Plymouth.
91. Karakassis I, Eleftheriou A (1997) The continental shelf of Crete: structure of macrobenthic communities. *Mar Ecol Prog Ser* 160: 185–196.
92. Sardà F, Calafat A, Flexas MMAR, Tselepidis A, Canals M, et al. (2004) An introduction to Mediterranean deep-sea biology. *Sci Mar* 68: 7–38.
93. Pape E, Bezerra TN, Jones DOB, Vanreusel A (2013) Unravelling the environmental drivers of deep-sea nematode biodiversity and its relation with carbon mineralisation along a longitudinal primary productivity gradient. *Biogeosciences* 10: 3127–3143.
94. Tecchio S, Ramirez-Llodra E, Sardà F, Company JB (2011) Biodiversity of deep-sea demersal megafauna in western and central Mediterranean basins. *Sci Mar* 75: 341–350.
95. Tselepidis A, Lampadariou N (2004) Deep-sea meiofaunal community structure in the Eastern Mediterranean: are trenches benthic hotspots? *Deep Sea Res Part I* 51: 833–847.
96. De Bovée F, Guidi LD, Soyer J (1990) Quantitative distribution of deep-sea meiobenthos in the northwestern Mediterranean (Gulf of Lions). *Cont Shelf Res* 10: 1123–1145.
97. Bouchet P, Taviani M (1992) The Mediterranean deep-sea fauna: pseudopopulations of Atlantic species? *Deep Sea Res* 39: 169–184.
98. Coll M, Piroddi C, Steenbeek J, Kaschner K, Ben Rais Lasram F, et al. (2010) The biodiversity of the Mediterranean Sea: estimates, patterns, and threats. *PLoS One* 5: e11842.
99. Wei C, Rowe G, Hubbard G, Scheltema A, Wilson G, et al. (2010) Bathymetric zonation of deep-sea macrofauna in relation to export of surface phytoplankton production. *Mar Ecol Prog Ser* 399: 1–14.
100. Ellingsen KE, Gray JS (2002) Spatial patterns of benthic diversity: is there a latitudinal gradient along the Norwegian continental shelf? *J Anim Ecol* 71: 373–389.
101. Giovannelli D, Molari M, d'Errico G, Baldrighi E, Pala C, et al. (2013) Large-scale distribution and activity of prokaryotes in deep-sea surface sediments of the mediterranean sea and the adjacent atlantic ocean. *PLoS One* 8: e72996.
102. Levin LA, Sibuet M, Gooday AJ, Smith CR, Vanreusel A (2010) The roles of habitat heterogeneity in generating and maintaining biodiversity on continental margins: an introduction. *Mar Ecol* 31: 1–5.
103. Rosso a., Vertino a., Di Geronimo I, Sanfilippo R, Sciuto F, et al. (2010) Hard- and soft-bottom thanatofacies from the Santa Maria di Leuca deep-water coral province, Mediterranean. *Deep Sea Res Part II* 57: 360–379.
104. Gooday AJ, Hughes JA, Levin LA (2001) The foraminiferan macrofauna from three North Carolina (USA) slope sites with contrasting carbon flux: a comparison with the metazoan macrofauna. *Deep Sea Res Part I* 41: 1709–1739.
105. Flach E, Lavaleye M, de Stigter H, Thomsen L (1998) Feeding types of the benthic community and particle transport across the slope of the N.W. European continental margin (Goban Spur). *Prog Oceanogr* 42: 209–231.
106. Lipps JH (1983) Biotic interactions in benthic foraminifera. *Biotic Interactions in recent and fossil benthic communities*. New york: Plenum Press. pp. 331–376.
107. Lee JJ (1980) Nutrition and physiology of the foraminifera. *Biochemistry and Physiology of Protozoa*. New york: Academic Press. pp. 43–66.
108. Witte U (2000) Vertical distribution of metazoan macrofauna within the sediment at four sites with contrasting food supply in the deep Arabian Sea. *Deep Sea Res Part II* 47: 2979–2997.
109. Serpenti N, Gontikaki E, Narayanaswamy BE, Witte U (2012) Macrofauna community inside and outside of the Darwin Mounds SAC, NE Atlantic. *Biogeosciences* 9: 16907–16932.
110. Galéron J, Menot L, Renaud N, Crassous P, Khrpounoff a., et al. (2009) Spatial and temporal patterns of benthic macrofaunal communities on the deep continental margin in the Gulf of Guinea. *Deep Sea Res Part II* 56: 2299–2312.
111. Sharma J, Baguley J, Bluhm B a, Rowe G (2011) Do meio- and macrobenthic nematodes differ in community composition and body weight trends with depth? *PLoS One* 6: e14491.
112. Kröncke I, Vanreusel A, Vincx M, Wollenburg J, Mackensen A, et al. (2000) Different benthic size-compartments and their relationship to sediment chemistry in the deep Eurasian Arctic Ocean. *Mar Ecol Prog Ser* 199: 31–41.

113. Boetius A, Scheibe S, Tselepidess A, Thiel H (1996) Microbial biomass and activities in deep-sea sediments of the Eastern Mediterranean: trenches are benthic hotspots. *Deep Sea Res Part I* 43: 1439–1460.
114. Gage JD (2003) Food inputs, utilization, carbon flow and energetics. In: Tyler PA, editor. *Ecosystems of the world. Ecosystems of the deep ocean*. Amsterdam: Elsevier. pp. 313–426.
115. Sharma J, Bluhm BA (2011) Diversity of larger free-living nematodes from macrobenthos (>250 μm) in the Arctic deep-sea Canada Basin. *Mar Biodivers* 41: 455–465.
116. Leduc D, Rowden A, Bowden D, Nodder S, Probert P, et al. (2012) Nematode beta diversity on the continental slope of New Zealand: spatial patterns and environmental drivers. *Mar Ecol Prog Ser* 454: 37–52.
117. Narayanaswamy BE, Coll M, Danovaro R, Davidson K, Ojaveer H, et al. (2013) Synthesis of knowledge on marine biodiversity in European Seas: from census to sustainable management. *PLoS One* 8: e58909.
118. Zajac RN (2008) Macrobenthic biodiversity and sea floor landscape structure. *J Exp Mar Bio Ecol* 366: 198–203.
119. Vanreusel A, Fonseca G, Danovaro R, da Silva MC, et al. (2010) The contribution of deep-sea macrohabitat heterogeneity to global nematode diversity. *Mar Ecol* 31: 6–20.
120. Danovaro R, Bianchelli S, Gambi C, Mea M, Zeppilli D (2009) Alpha-, beta-, gamma-, delta- and epsilon-diversity of the deep-sea nematodes in canyons and open slopes of Northeast Atlantic and Mediterranean margins. *Mar Ecol Prog Ser* 396: 197–209.