



**Universidade de São Paulo**

**Biblioteca Digital da Produção Intelectual - BDPI**

---

Departamento de Medicina Veterinária - FZEA/ZMV

Artigos e Materiais de Revistas Científicas - FMVZ/VCi

---

2014

# Placentation and fetal membrane development in the South American coati, *Nasua nasua* (Mammalia, Carnivora, Procyonidae)

---

Reproductive Biology and Endocrinology. 2014 Jun 27;12(1):57

<http://dx.doi.org/10.1186/1477-7827-12-57>

*Downloaded from: Biblioteca Digital da Produção Intelectual - BDPI, Universidade de São Paulo*

SHORT COMMUNICATION

Open Access

# Placentation and fetal membrane development in the South American coati, *Nasua nasua* (Mammalia, Carnivora, Procyonidae)

Phelipe O Favaron<sup>1\*</sup>, João C Morini Jr<sup>1†</sup>, Andrea M Mess<sup>1</sup>, Maria A Miglino<sup>1</sup> and Carlos E Ambrósio<sup>2</sup>

## Abstract

**Background:** Placental research in carnivores has concentrated on domestic species, which have zonary, labyrinthine placentas with an endotheliochorial barrier. Although the coati, *Nasua nasua*, is a widely distributed species in South America, data on the development of the placenta and the fetal membranes in this species are very sparse.

**Findings:** Four placentas from mid-gestation to near term were collected from wild individuals and were investigated based on gross morphology, histology, immunohistochemistry and electron microscopy. The available data support the concept that the ancestral condition of placentation in carnivores is phylogenetically characterized by a zonary and labyrinthine placental type with an endotheliochorial fetomaternal barrier, comprising extended epitheliochorial and haemochorial zones, such as hemophagous organs for iron supply and histiotrophe uptake and a yolk sac placenta.

**Conclusions:** Because of the foundational mechanisms that lead to the considerable complexity of fetomaternal contact zones in carnivores have not been studied, carnivores are interesting animal models for interhaemal barrier differentiation.

**Keywords:** Carnivore, Endotheliochorial placenta, Hemophagous organ, Yolk sac

## Findings

### Background

Carnivores are regarded as having zonary, labyrinthine placentas with an endotheliochorial barrier. In addition, specialized areas are common, such as hematomas or hemophagous organs for the uptake of uterine secretion or the phagocytosis of extravasated maternal blood components, serving as mode of iron supply [1-3]. However, placental research in carnivores has mainly concentrated on domestic dogs and cats [4-11], rather than other species (e.g., [12-14]). Within Musteloidea, the mink, ferret and sea otter have been investigated [15-18], in addition to the raccoon and certain other species, including the coati-mundi *Nasua narica* [19-21], (Figure 1A). Because more information, especially on wildlife species, is essential to

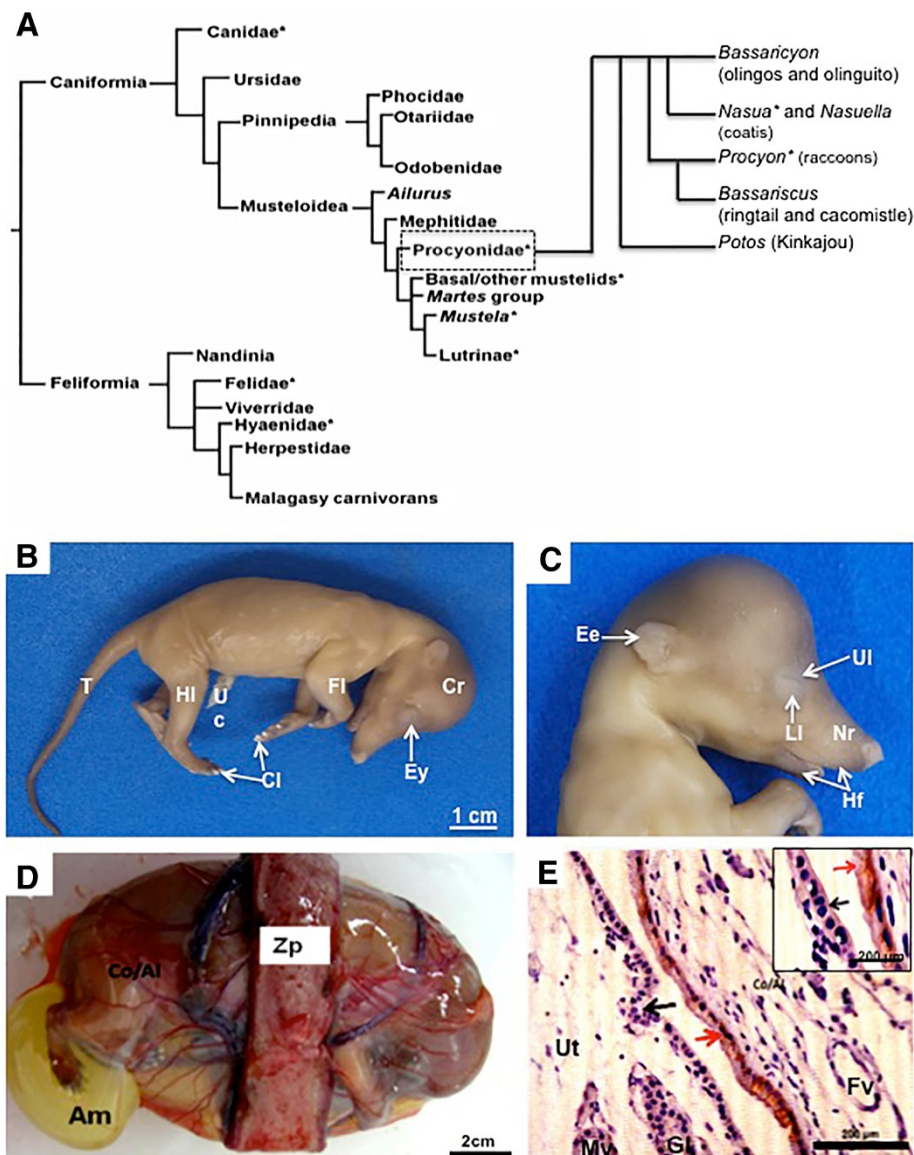
better understanding the evolution of placentation in carnivores, we herein describe this system in the South American coati *Nasua nasua* (Linnaeus, 1766), which is native to southern South America, for the first time [22]. Coatis are omnivorous, medium-sized animals with a body mass of approximately 6 kg [21,22]. These animals live in groups organized within a complex social system consisting of up to 70 individuals. Two different groups are usually present; one composed entirely of adult males and a second group consisting of an alpha female (dominant), adult females, and young [23,24]. Females reach sexual maturity at 2 years of age, and males do so at approximately 3 years. The mating season usually occurs in late spring, from September to November. This is the only time when adult reproductive males meet with female groups [22-24]. After 10-11 weeks of gestation, 2-6 very altricial young with a body weight of 100 to 180 g are born [21,22]. Conclusions about the evolutionary course of the characters have been drawn from comparative analyses and analyzed within the relationships of carnivoran groups (Figure 1A), as indicated by recent

\* Correspondence: phelipe.favaron@yahoo.com.br

†Equal contributors

<sup>1</sup>Department of Surgery, School of Veterinary Medicine and Animal Science, University of Sao Paulo, Av. Prof. Dr. Orlando Marques de Paiva, 87, Cidade Universitária, 05508-270 São Paulo, SP, Brazil

Full list of author information is available at the end of the article



**Figure 1** Phylogeny of carnivores and features of the fetuses and placenta. **(A)** Systematic relationships of Carnivora, with basal dichotomy between Caniformia and Feliformia (after [25,26]). The groups included in the comparison are marked by asterisks. **(B-C)** External features of the fetuses. Note the well-developed cranial region (Cr), forelimbs (FI) and hindlimbs (HI) with keratinized claws (CI), and elongated tail (T). In the cranial region, note the eye (Ey) with upper (UI) and lower (LI) lips and pigmented retina. Hair follicles (Hf) were present in the elongated nasal region (Nr). Uc = umbilical cord. **(D)** Macroscopic anatomy of the term placenta in coati. Zp = zonary chorioallantoic placenta, Co/Al = noninvasive chorioallantois, Am = amnion. **(E)** Cytokeratin, mid-gestation. Chorioallantoic membrane (Co/Al) attached to the uterus (Ut), both with intact epithelia (arrows). Gl = uterine gland, Mv = maternal (arterial) vessel, Fv = fetal vessel.

morphological and molecular phylogenetics [25,26]. We use the terminology of phylogenetic systematics [27] in differentiating between derived character conditions and ancestral ones, with special reference to ancient conditions or the stem species patterns of Carnivora.

#### Methods

The project was approved by the Bioethics Commission of the School of Veterinary Medicine and Animal Science, University of Sao Paulo, Brazil (Protocol Nr. 1598/2009),

on July 1st, 2009, and by the Biodiversity Authorization and Information System – SISBIO (Protocol Nr. 21030–1) on September 17th, 2010. The study was performed from July 2009 to November 2011.

In total, four placentas from mid-gestation (n = 2) to near term (n = 2) were collected from 2 wildlife individuals captured in Mangabeiras Park in Belo Horizonte-MG, Brazil. Hemi-ovariohysterectomy was performed following surgical and anesthetic protocols used for domestic carnivores [28].

Measurements of the occipital-sacral distance of the fetuses' heads were performed with a stainless-steel caliper, using the nuchal crest at one end and the last sacral vertebra at the opposite end as references (crown-rump, CR), following the methodology proposed by Evans and Sack [29]. The CR distances and the external features of the fetuses were used to estimate the age of each individual. The weight (g) was determined using a digital scale (0.0001 g; BEL Engineering).

After macroscopic examination of the main placental structures (zotary placenta, chorion, allantois, amnion, yolk sac, and hemophagous organs), the tissues were fixed in 4% paraformaldehyde for histology and immunohistochemical staining. The samples were stained for vimentin (1:400, 0.N.602, sc-73259, Santa Cruz Biotechnology, Santa Cruz, CA, USA) to identify mesenchymal cells and endothelium, for cytokeratin (1:300; M0821, Dako, Carpinteria, CA, USA) to identify epithelial and trophoblastic cells, and for proliferating cell nuclear antigen (PCNA; 1:300; PC10, sc-56, Santa Cruz Biotechnology, Santa Cruz, CA, USA) to identify proliferating cells. For this staining, we followed protocols established by our group [30]. The negative control was goat anti-mouse IgG (1:500; AP308F, Chemicon International Temecula, CA, USA). The slides were examined with an Olympus BX40 microscope with a Zeiss KS400 image analysis system. For scanning and transmission electron microscopy, placental samples were fixed in 2.5% glutaraldehyde and processed following established protocols [10,11].

## Results

### Macroscopy of the fetuses

The two *Nasua nasua* offspring displayed CR lengths of 6.3 cm and 6.5 cm at mid-gestation and weighed 21.37 g and 23.88 g. Thus, their estimated age was 37–40 days of pregnancy. Near term (estimated age of 50–53 days of pregnancy), the offspring displayed CR lengths of 8.9 cm and 9.5 cm and weighed 33.61 g and 35.28 g. In both stages, the individuals had a body with distinct cranial, thoracic, and abdominal regions. An elongated and curved tail was also a feature observed in these stages of pregnancy. The forelimbs and hindlimbs were completely formed and presented keratinized claws on the fingers (Figure 1B). On the face, well-formed upper and lower lips were identified. The eyes displayed pigmented retinas. The nasal region was elongated, with several sensorial hair follicles, and the external ear was short but evident (Figure 1C). In addition, the entire body of the fetuses was covered by hair that was short, with dark pigmentation in certain regions, including the face, forelimbs and hindlimbs, and tail (Figure 1B,C).

### The placenta and fetal membranes

The chorioallantoic placenta was fully zotary and surrounded each fetus in the abdominal region (Figure 1D).

Outside the girdle, the trophoblast of the chorioallantoic membrane was apposed to the vascularized, gland-rich uterus, which had an intact, cubic epithelium (Figure 1E).

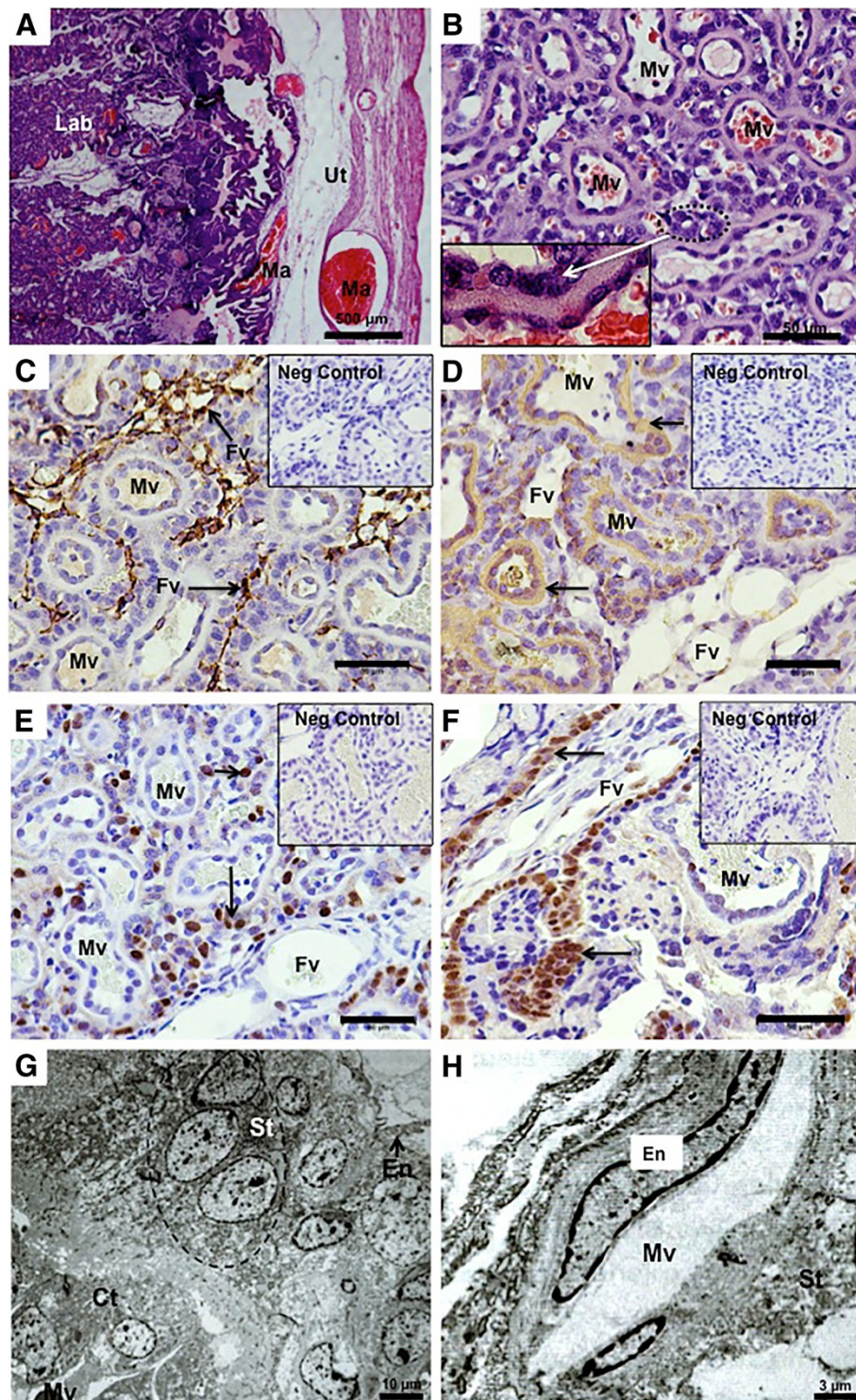
The placental girdle in *Nasua nasua* had a prominent, lamellar labyrinth that was endotheliochorial in nature. Each lobe was supplied by central maternal and fetal vessels in a crosscurrent arrangement (Figure 2A,B). The mesenchyme of the fetal vessels was strongly reactive for vimentin, and it was possible to delimit the maternal and fetal blood systems in the labyrinthine zone (Figure 2C). In contrast, the trophoblast near the maternal vessels was positive for cytokeratin (Figure 2D). The trophoblastic cells close to the fetal blood vessels were especially proliferative, including in the branches of the chorioallantoic membrane near the placental girdle in mid-gestation (Figure 2E,F). Both cellular and syncytiotrophoblasts were frequent in mid-gestation (Figure 2G,H). Near term, the barrier was mainly syncytial and thin, but clustered cytotrophoblasts were present near the fetal vessels (Figure 2B). At that point, the endothelium of the maternal vessels was more hypertrophied than in mid-gestation (Figure 2H). In addition to the main placenta, the coati had a prominent, sac-like, orange area, vascularized by vessels from the umbilical cord that persisted until term (Figure 3A,B). Based on a centrally situated area of destruction allowing leakage of maternal blood, the area emanated into the allantoic cavity (Figure 3B) and was distinct from the labyrinth (Figure 3C). Iron deposits (Figure 3D) indicated a haemophagous nature. Inside, branched, vascularized villi were present, bathed in extravasated maternal blood (Figure 3E). The trophoblast was columnar, with large nuclei, apical vacuoles, and liquid droplets that stored ingested erythrocytes (Figure 3D,E).

The amnion in the coati included large amounts of yellow-pigmented liquids (Figures 1D, 3G) and was avascular in mid-gestation but vascular near term due to fusion with the allantois (Figure 3H). The yolk sac was surrounded by the amniotic membrane (Figure 3G) and had a cubic epithelium composed of the endoderm, with iron deposits (Figure 3H,I). Numerous, large vitelline vessels were present, with blood cells forming vascular islets (Figure 3H,I).

## Discussion

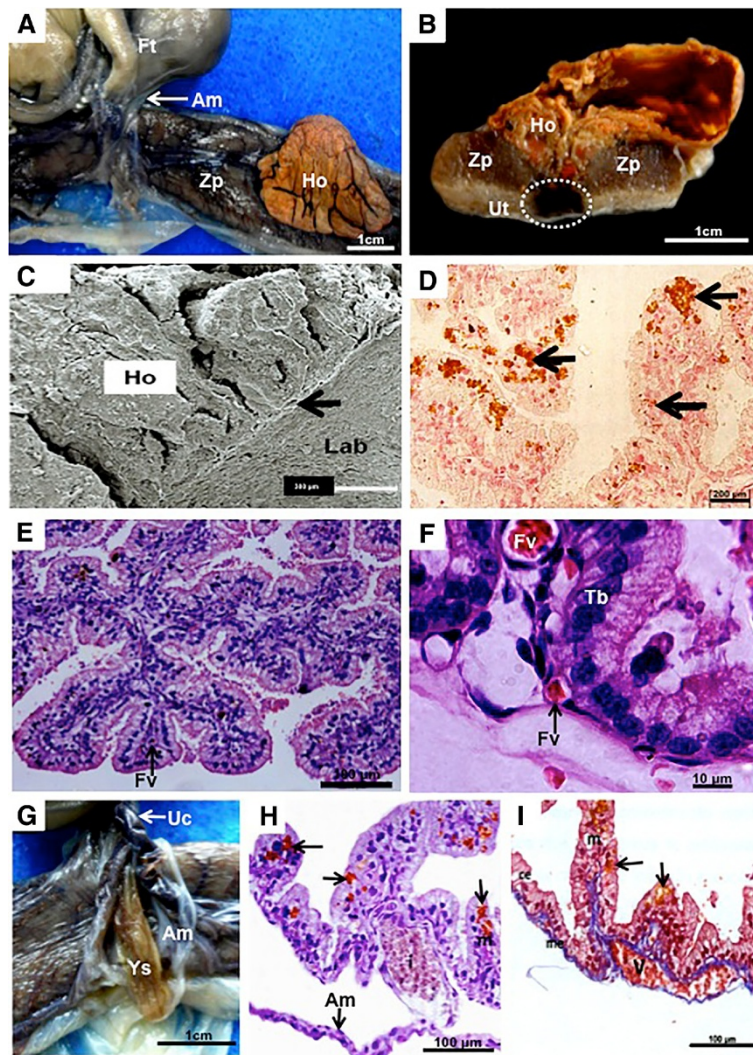
Extended non-invasive, non-villous, fetomaternal contact zones similar to what is observed in epitheliochorial placentas are widespread in carnivores [4–21] and are known as the polar zone of the paraplacenta [7]. These zones likely uptake histiotrophe from endometrial glands [8] and represent an ancient character condition of the group Carnivora. The hyena is unique among carnivores because it presents a hemochorial villous placenta with intimate contact between the fetal and the maternal circulation via so-called intraepithelial capillaries in the syncytial





**Figure 2 Placental structure and fetal membranes.** (A) Hematoxylin and eosin, term placenta. Villi of the labyrinth (Lab), supplied by maternal arteries (Ma) from the uterus (Ut). (B) Hematoxylin and eosin, term. Detail of the maternal vessels (Mv) in the labyrinth and the cytotrophoblast clusters (circle and detail). (C,D) Immunohistochemical staining for vimentin and cytokeratin, respectively, near term. The mesenchyme of the fetal blood vessels (Fv) was strongly reactive for vimentin, in contrast to the maternal vessels (Mv). Cytokeratin in trophoblastic cells (arrows) near the maternal vessels (Mv). (E-F) PCNA, near term. In E: Proliferative trophoblastic cells (arrows) in the labyrinth, near the fetal vessels (Fv). Mv = maternal vessels. In F: Proliferation of the chorioallantoic branches (arrow) inside the labyrinth. (G,H) Transmission electron microscopy, mid-gestation. Cytotrophoblast (Ct) and syncytiotrophoblast (St) near a maternal vessel (Mv) and a fetal vessel with endothelium (En).





**Figure 3 Placental structure and fetal membranes.** (A,B) Macroscopy, near-term placenta. Sac-like hemophagous organ (Ho) central to the zonary placenta (Zp) and supplied by an area of destruction (circle) in the uterus (Ut). Am = amnion, ft = fetus. (C) Scanning electron microscopy, mid gestation hemophagous organ. The hemophagous organ (Ho) was near the labyrinth (Lab), separated by a thin membrane (arrow). (D) Pearl's iron staining, mid-gestation. Iron deposits in the cytoplasm of the trophoblast (arrows). (E,F) Hematoxylin and eosin, near term. Villi of the hemophagous organ with a columnar trophoblast (Tb) and fetal vessels (Fv). (G) Macroscopy, term. The yolk sac (Ys) was surrounded by the amnion (Am). The umbilical cord (Uc) was short. (H) Pearl's iron staining, mid-gestation, with iron deposits in the yolk-sac endodermal cells (arrows). Am = amnion. (I) Masson's trichrome, near term. Histology of the yolk sac, with mesothelium (me), mesoderm (m), and columnar endoderm (ce) with vacuoles (arrows).

trophoblast [13]. In contrast, true epitheliochorial placentas, serving as main fetomaternal contact zones, i.e., the complete reduction of invasive trophoblasts in maternal tissue interactions into strictly noninvasive forms, are regarded as evolutionarily derived conditions that have occurred in several clades of eutherian mammals, such as the ungulates and relatives [2,31-34]. Because there is little detailed information on the foundational processes of mammalian trophoblast invasion and its restriction, it is unclear whether the ontogenetic establishment of the carnivore paraplacenta follows similar processes as do the epitheliochorial placentas of close relatives within

Laurasiatheria [2,32]. However, regarding the main fetomaternal exchange region of the placenta, comparative data [4-21] have confirmed that endotheliochorial, labyrinthine placentation belongs to the ancestral carnivore pattern [2,32]. Within the group, only hyenas have haemochorial placentas [13,14], which are hemomonochorial in nature, consisting of a continuous layer of syncytial trophoblasts, a basal lamina, and the fetal capillary endothelium [35].

Regarding the fine structure of the fetomaternal interface, the following characters are widespread among carnivores and seemed to belong to their stem species pattern

or ancestral pattern: an endotheliochorial barrier in the zonary or circumferential placenta, in addition to a yolk sac and a large allantoic sac that persist until term. In contrast, the coati and other procyonids were derived from the ancient carnivore condition, maintaining the cellular trophoblast to term [19-21].

Hematomas (hemophagous organs), as specialized quasi-haemochorial zones in addition to the main endotheliochorial placenta, are widespread in carnivores. These structures are usually temporary, are mainly built by phagocytosing cytotrophoblasts [9,20] that are associated with uterine glands and extravasated blood, serve as the iron supply, and take up histiotrophe [4-21]. Thus, these organs represent multifunctional or heterophagous areas [1,3,14]. The ancestral pattern of carnivores likely had such areas at the placental margin, occurring in both Caniformia and Feliformia. *Nasua* and other Musteloidea [19-21] have large, multilobular organs in a central position. Moreover, *Nasua nasua* possesses a derived condition in that the organ persists, fully functional, until near term. Areolae are absent in the coati and in other Musteloidae, cats and hyenas [4,7,8,10,13-21] and likely are not part of the carnivore stem species pattern [2].

## Conclusions

The data on the coati supported previous views on the ancestral placental characters of carnivores; the maintenance of cellular trophoblasts in the barrier and the large, central hemophagous organ that persisted until near term were confirmed. The ancestral pattern of carnivores includes not only an endotheliochorial, labyrinthine placental girdle, but also extended epitheliochorial and hemochorial zones and placental function for the yolk sac. This considerable complexity of fetomaternal contact zones must have evolved before the radiation of carnivores, approximately 65 million years ago [25,26]. It is currently unclear what types of tissue-specific inflammation patterns and associated molecular mechanisms are involved in establishing specific fetomaternal contact in various regions. Thus, carnivores are interesting animal models for studying the full range of interhaemal barrier differentiation and function within an individual species. The coati may be of special interest to further study persisting hemophagous organs to better understand the nature and functional significance of substance transfer in the placental areas.

## Competing interests

There are no financial competing interests for any of the authors.

## Authors' contributions

POF and JCM performed the practical analysis, advised by CEA. CEA and MAM devised the study and participated in its design. AMM and POF wrote the manuscript. CEA and MAM corrected the manuscript. All authors read and approved the final manuscript.

## Acknowledgments

We thank Adriana Morini for support in the preparation and laboratory procedures. Financial support was provided by FAPESP (2009/51606-0).

## Author details

<sup>1</sup>Department of Surgery, School of Veterinary Medicine and Animal Science, University of Sao Paulo, Av. Prof. Dr. Orlando Marques de Paiva, 87, Cidade Universitária, 05508-270 São Paulo, SP, Brazil. <sup>2</sup>Department of Veterinary Medicine, FZEA, University of São Paulo, Av. Duque de Caxias Norte, 225, ZMV, 13635-900 Pirassununga, SP, Brazil.

Received: 8 April 2014 Accepted: 14 June 2014

Published: 27 June 2014

## References

- Enders AC, Carter AM: Comparative placentation: some interesting modifications for histotrophic nutrition – a review. *Placenta* 2006, **27**(Suppl):11–16.
- Mess A, Carter AM: Evolutionary transformations of fetal membrane characters in Eutheria with special reference to Afrotheria. *J Exp Zool B Mol Dev Evol* 2006, **306**:140–163.
- Enders AC, Carter AM: The evolving placenta: Convergent evolution of variations in the endotheliochorial relationship. *Placenta* 2012, **33**:319–326.
- Amoroso EC: Histology of the placenta. *Brit Med Bull* 1961, **17**:81–90.
- Anderson JW: Ultrastructure of the placenta and fetal membranes of the dog. I - The placental labyrinth. *Anat Rec* 1969, **165**:15–36.
- Wynn RM, Corbet JR: Ultrastructure of the canine placenta and amnion. *Am J Obstet Gynecol* 1969, **103**:878–887.
- Leiser R, Enders AC: Light- and electron-microscopic study of the near-term paraplacenta of the domestic cat. *Act Anat* 1980, **106**:312–326.
- Leiser R, Koob B: Development and characteristics of placentation in a carnivore, the domestic cat. *J Exp Zool* 1993, **266**:642–656.
- Stoffel MH, Gille U, Friess AE: Scanning electron microscopy of the canine placenta. *Ital J Anat Embryol* 1998, **103**:291–300.
- Migliano MA, Ambrósio CE, Martins DS, Pfarrer C, Leiser R: The carnivore pregnancy: the development of the embryo and fetal membranes. *Theriogenology* 2006, **66**:1699–1702.
- Ambrósio CE, Brolio MP, Martins DS, Morini JC, Carvalho AF, Migliano MA: Endometrial alterations, early placentation and maternal fetal interaction in carnivores. *Rev Bras Reprod Anim* 2011, **35**:217–228.
- Michel G, Elze K, Seifert S: Zur Embryonalentwicklung des Bären unter besonderer Beachtung des Baues der Plazenta. *Zoolog Gart* 1983, **53**:290–294.
- Wynn RM, Amoroso C: Placentation in the spotted hyena (*Crocuta crocuta* Erxleben), with particular reference to the circulation. *Am J Anat* 1964, **115**:327–362.
- Enders AC, Blankenship TN, Conley AJ, Jones CJP: Structure of the midterm placenta of the spotted hyena, *Crocuta crocuta*, with emphasis on the diverse hemophagous regions. *Cells Tissues Organs* 2006, **183**:141–155.
- Enders AC: Histological observations on the chorio-allantoic placenta of the mink. *Anat Rec* 1957, **127**:231–245.
- Sinha AA, Mossmann HW: Placentation of the sea otter. *Am J Anat* 1968, **119**:521–554.
- Krebs C, Winter H, Dantzer V, Leiser R: Vascular interrelationships of near-term mink placenta: light microscopy combined with scanning electron microscopy of corrosion casts. *Microsc Res Tech* 1997, **38**:125–136.
- Pfarrer C, Winther H, Leiser R, Dantzer V: The development of the endotheliochorial mink placenta: light microscopy and scanning electron microscopical morphometry of maternal vascular cats. *Anat Embryol* 1999, **199**:63–74.
- Creed RFS, Biggers JD: Comparative placentation of the raccoon. *Am J Anat* 1963, **113**:417–446.
- Creed RFS, Biggers JD: Placental haemophagous organs in the Procyonidae and Mustelidae. *J Reprod Fertil* 1964, **8**:133–137.
- Benirschke K: Coatimundi, *Nasua narica yucatanica*. 2014. <http://placentation.ucsd.edu>.
- Beisiegel BM: Notes on the coati, *Nasua nasua* (Carnivora: Procyonidae) in Atlantic Forest area. *Rev Bras Biol* 2001, **61**:689–692.

23. Gompper ME, Gittleman JL, Wayne RK: **Genetic relatedness, coalitions and social behaviour of White-nosed coatis, *Nasua narica*.** *Anim Behav* 1997, **53**:781–787.
24. Gompper ME, Gittleman JL, Wayne RK: **Dispersal, philopatry, and genetic relatedness in a social carnivore: comparing males and females.** *Mol Ecol* 1998, **7**:157–163.
25. Flynn JJ, Finarelli JA, Zehr S, Hsu J, Nedbal MA: **Molecular phylogeny of the carnivore (Mammalia): assessing the impact of increased sampling on resolving enigmatic relationships.** *Syst Biol* 2005, **54**:317–337.
26. Nyakatura K, Bininda-Emonds ORP: **Updating the evolutionary history of Carnivora (Mammalia): a new species-level supertree complete with divergence time estimates.** *BMC Biol* 2012, **10**:12.
27. Henning W: *Phylogenetische systematic*. Berlin: Parey; 1982.
28. Oliveira FS, Toniollo GH, Machado MRF, Paura D: **Hemi-ovariossalpingo-histerectomia em pacas prenhes e posterior ocorrência de prenhez (*Agouti pacca*, Linnaeus, 1766).** *Ciênc Rural* 2003, **33**:547–551.
29. Evans HE, Sack WO: **Prenatal development of domestic and laboratory mammals: growth curves, external features and selected references.** *Anat Histol Embryol* 1973, **2**:11–45.
30. Favaron PO, Carter AM, Ambrosio CE, Morini AC, Mess AM, Oliveira MF, Miglino MA: **Placentation in Sigmodontinae: a rodent taxon native to South America.** *Reprod Biol Endocrinol* 2011, **9**:55.
31. Mess A, Carter AM: **Evolution of the placenta during the early radiation of placental mammals.** *Comp Biochem Physiol A Mol Integr Physiol* 2007, **148**:769–779.
32. Wildman DE, Chen C, Erez O, Grossman LJ, Goodman M, Romero R: **Evolution of the mammalian placenta revealed by phylogenetic analysis.** *Proc Natl Acad Sci* 2006, **103**:3203–3208.
33. Eliot MG, Crespi BJ: **Placental invasiveness mediates the evolution of hybrid inviability in mammals.** *Am Nat* 2006, **168**:114–120.
34. Capellini I, Venditti C, Barton RA: **Placentation and maternal investment in mammals.** *Am Nat* 2011, **177**:86–98.
35. Oduor-Okelo D, Neaves WB: **The chorioallantoic placenta of the spotted hyena (*Crocuta crocuta* Erxleben): an electron microscopic study.** *Anat Rec* 1982, **204**:215–222.

doi:10.1186/1477-7827-12-57

**Cite this article as:** Favaron *et al.*: Placentation and fetal membrane development in the South American coati, *Nasua nasua* (Mammalia, Carnivora, Procyonidae). *Reproductive Biology and Endocrinology* 2014 **12**:57.

**Submit your next manuscript to BioMed Central and take full advantage of:**

- Convenient online submission
- Thorough peer review
- No space constraints or color figure charges
- Immediate publication on acceptance
- Inclusion in PubMed, CAS, Scopus and Google Scholar
- Research which is freely available for redistribution

Submit your manuscript at  
[www.biomedcentral.com/submit](http://www.biomedcentral.com/submit)

