

NOTE

BRAZILIAN JOURNAL OF OCEANOGRAPHY, 56(2) :139-143, 2008

IDENTIFICATION OF THE SHARKS OF THE GENUS *Etmopterus* RAFINESQUE, 1810 (ELASMOBRANCHII: ETMOPTERIDAE) FROM THE UPPER SLOPE OF SOUTHERN BRAZIL, WITH COMPARISON BETWEEN THE SPECIES *E. BIGELOWI* SHIRAI & TACHIKAWA, 1993 AND *E. PUSILLUS* LOWE, 1839Michel D. Gianeti¹ and Carolus M. Vooren²

¹Instituto Oceanográfico da Universidade de São Paulo
(Praça do Oceanográfico, 191, 05508-120 São Paulo, SP, Brasil)
mgnine@hotmail.com

²Fundação Universidade Federal do Rio Grande
Departamento de Oceanografia
(Caixa Postal 474, 96201-000 Rio Grande, RS, Brasil)

The genus *Etmopterus* Rafinesque, 1810 is the most diverse genus within the Squalomorphii and the Selachii as a whole, with 32 recognized species. These sharks are small to medium-sized, reaching 23 to 75 cm of total length in the adult phase (COMPAGNO, 1984; LAST; STEVENS, 1994). The species are widespread in temperate and tropical waters, have benthopelagic habits and occur mostly at depths of 200 to 2000 m (COMPAGNO, 1984; MUSICK et al., 2004).

Four *Etmopterus* species occur in Brazil: *E. gracilispinis* Krefft, 1968, *E. lucifer* Jordan & Snyder, 1902, *E. bigelowi*, and *E. granulosus* Günther, 1880 (SADOWSKY et al., 1986; SOTO, 2000; SOTO 2001; BERNARDES et al., 2005). Only the three first species occur on continental slope of depths down to 600 m. The occurrence of *E. granulosus* has been reported at depths greater than 2000 m (SOTO, 2001).

As these sharks have a complex taxonomy and have been little studied in Brazil, the purpose of the present work was to confirm the *Etmopterus* species occurring on the Rio Grande do Sul slope at depths down to 600 m, with a taxonomic resolution of the species complex *E. pusillus/bigelowi* in the area.

In the scope of the Prospective Demersal Project of the “Score Sul REVIZEE Program” (BERNARDES et al., 2005), 152 specimens of the genus *Etmopterus* were collected. The study area included the outer continental shelf and the upper slope off the state of Rio Grande do Sul, between Chuí (34° 20' S) and the Cape of Santa Marta Grande (28° 30' S), at depths from 100 to 600 m. Surveys were carried out by the R/V Atlântico Sul.

Soon after the catch, each specimen was classified according to Krefft (1968) criteria as *Etmopterus gracilispinis*, *Etmopterus lucifer*, or belonging to the *Etmopterus pusillus/bigelowi* complex for having characteristics common to *E.*

pusillus and *E. bigelowi*, mainly the presence of truncated dermal denticles, which give the animal a smooth appearance. The specimens had their total length (TL) measured from the snout tip to the upper caudal lobe tip aligned with the body axis, and were then fixed in 10 % formalin and preserved in 70 % ethanol. The evidence material is kept in the “Laboratório de Elasmobrânquios e Aves Marinhas” of “Fundação Universidade Federal de Rio Grande (FURG)”, RS - Brazil.

In the laboratory, using the criteria described by Krefft (1968), Shirai and Tachikawa (1993), Last and Stevens (1994) and Last et al. (2002), the field identification of the specimens classified as *E. gracilispinis* (Fig.1)(n = 62; TL: 13.0 – 22.3 cm) and *E. lucifer* (Fig. 2)(n = 2; TL: 36.9 – 38.4 cm) was confirmed.

The 88 specimens classified in the field as *E. pusillus/bigelowi*, were identified as *E. bigelowi* (Fig. 3)(TL: 17.4 – 67.0 cm). For this specimens the turns in the intestinal valves were counted and some morphological proportions described by Shirai and Tachikawa (1993) and Last et al. (2002) were measured (being the distances between the points projected onto the body axis).

Specimens of *E. gracilispinis* showed slender, pointed dermal denticles that were not arranged in regular rows, and the dimensions of the head, the position of the pelvic fins, the intensity of the black markings on the body and the interdorsal space were according to the description of *E. gracilispinis* in Krefft (1968). In *E. lucifer*, the dermal denticles were also slender and pointed, but mostly arranged in longitudinal rows along the body, while the form and intensity of the black markings on the body and the length of the tail were according to the description of *E. lucifer* in Compagno (1984) and Last and Stevens (1994).

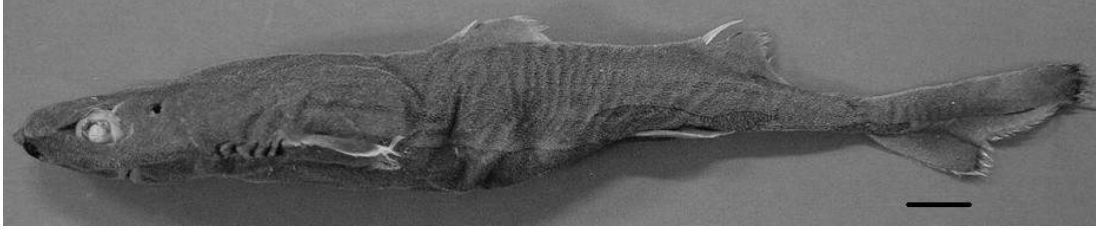


Fig. 1. Specimen of *E. gracilispinis* from Southern Brazil. Male; total length: 19.2 cm; number: R7#19N01 (440 m; 33°36'S - 50°45'W). Scale = 1 cm.

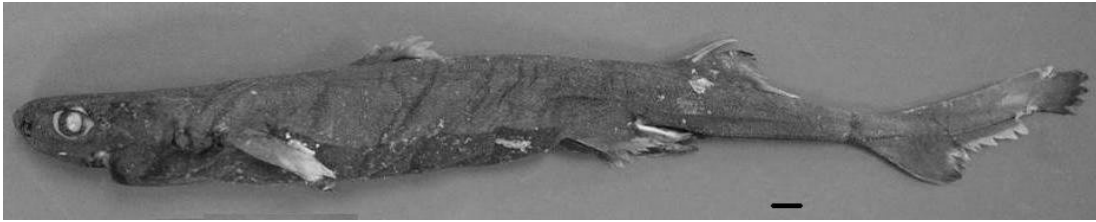


Fig. 2. Specimen of *E. lucifer* from Southern Brazil. Male; total length: 36.9 cm; number: R7#18N01 (538 m; 33°36'S - 50°44'W). Scale = 1 cm.

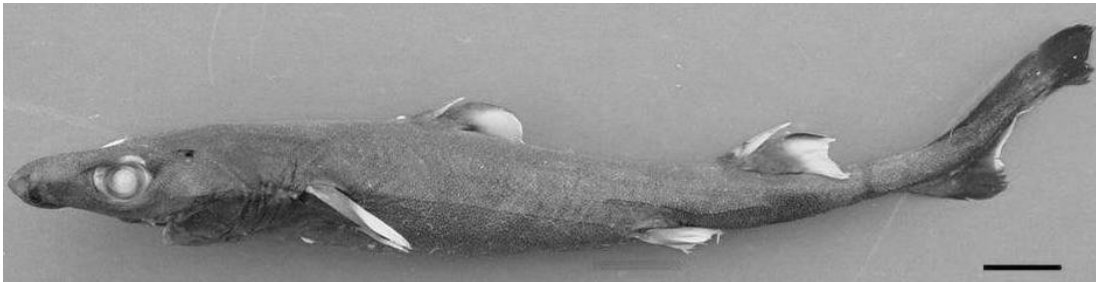


Fig. 3. Specimen of *E. bigelowi* from Southern Brazil. Female; total length: 17.4 cm; number: R7#15N13 (536 m; 34°17'S - 51°37'W). Scale = 1 cm.

Table 1 displays the diagnostic features of *E. bigelowi* and *E. pusillus* used as criteria for identifying each species. According to those criteria, the features of the specimens studied coincide with those of *Etmopterus bigelowi*, as follows:

- number of turns in the intestinal valves varying from 16 to 19 (average = 17);
- distance from the pectoral axil to the first dorsal fin origin equal to or shorter than 1/3 of the interdorsal space (Fig. 4);
- distance from the free rear tip of pectoral fin to the first dorsal fin origin shorter than the horizontal eye diameter (Fig. 5);
- distance from the snout tip to the first gill slit (head length) longer than distance from the first gill slit to the first dorsal fin origin (Fig. 6);
- first dorsal fin spines of the analyzed specimens

longer than those of *E. pusillus* (compared with literature data) and this difference increased with growth (Fig. 7).

Etmopterus gracilispinis, *E. lucifer*, and *E. bigelowi* occurred only to the south of latitude 31° S. *E. bigelowi* occurred in the depth layer of 400 to 599 m, and *E. gracilispinis* in the depth layer of 300 to 599 m. The two specimens of *E. lucifer* occurred at depth of 540 m. The bottom hydrographic conditions of temperature (5 to 10°C) and salinity (34 to 35) showed no seasonal differences and the species occurred on a sea bed consisting of clay and silt sediment.

Using Krefft (1968) and Last and Stevens (1994) criteria, it was possible to identify the specimens of *E. gracilispinis* and *E. lucifer* without difficulty.

Table 1. Diagnostic features of *Etmopterus bigelowi* and *Etmopterus pusillus* used to identify specimens of *E. pusillus/bigelowi* complex.

Features	Species	
	<i>E. bigelowi</i>	<i>E. pusillus</i>
Number of turns in the intestinal spiral valves ⁽¹⁾	16 – 19	10 – 14
Distance from pectoral fin axil to first dorsal fin origin ⁽¹⁾	Shorter, or equal to 1/3 of interdorsal space	Longer than 1/3 of the interdorsal space
Distance from free rear tip of pectoral fin to first dorsal fin origin ⁽²⁾	Shorter than horizontal diameter of eye	Longer than horizontal diameter of eye
Distance from snout tip to first gill slit ⁽²⁾	Longer than distance from first gill slit to first dorsal fin origin	Shorter than distance from first gill slit to first dorsal fin origin
Length of the first dorsal fin spine ⁽¹⁾	Longer than in <i>E. pusillus</i>	Shorter than in <i>E. bigelowi</i>

Sources: ⁽¹⁾Shirai & Tachikawa (1993); ⁽²⁾Last *et al.* (2002).

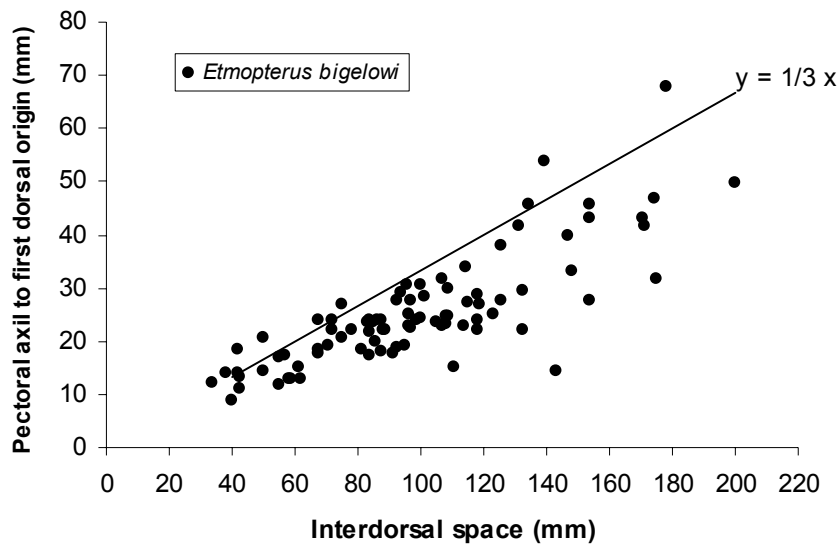


Fig. 4. Relationship between the distance from pectoral axil to first dorsal fin origin (y) and the interdorsal space (x). Line means $y = 1/3x$. Black dots, which represent the proportions of 88 specimens from Southern Brazil, show that most y values are $\leq 1/3x$, which is characteristic of *E. bigelowi*, specially for larger specimens.

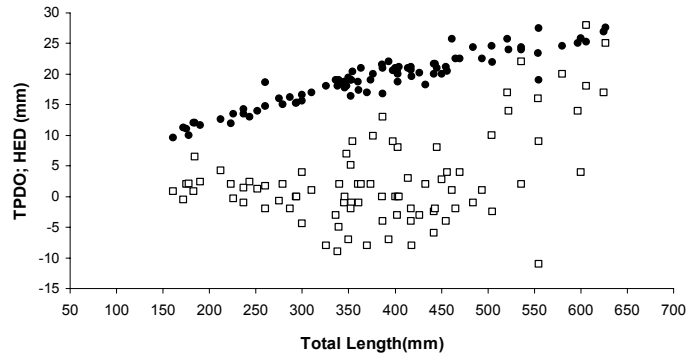


Fig. 5. Relationship between total length and horizontal eye diameter (HED, black dots) and between total length and the distance from free rear tip of pectoral fin to the first dorsal fin origin (TPDO, open squares), of 88 specimens from Southern Brazil. Notice that almost all values of TPDO are shorter than the values of HED, another characteristic of *E. bigelowi*.

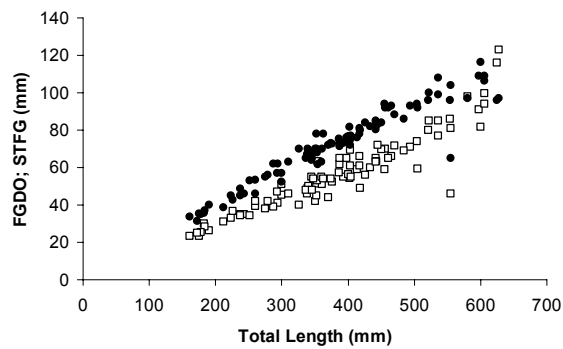


Fig. 6. Relationship between total length and distance from the snout tip to first gill slit (STFG, black dots) and between total length and distance from first gill slit to the first dorsal fin origin (FGDO, open squares), of 88 specimens from Southern Brazil. Notice the *E. bigelowi* feature in the specimens, with FGDO values shorter than STFG.

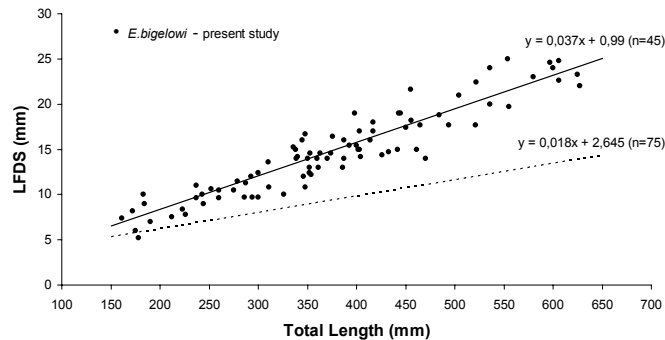


Fig. 7. Relationship between total length (TL) and the length of the first dorsal fin spine (LFDS), in 88 specimens from Southern Brazil, with the equations and lines of the regression LFDS-TL from *E. bigelowi* (solid line) and *E. pusillus* (dashed line) according to Shirai & Tachikawa (1993). Notice that the values of the Brazilian specimens are distributed around the line for *E. bigelowi*.

The identification of *E. bigelowi* is more complicated because of the many features that the species has in common with *E. pusillus*. However, using the Shirai and Tachikawa (1993) criteria, which describe the species *E. bigelowi*, and with the criteria cited by Last et al. (2002), it was possible to obtain a reliable identification of the specimens belonging to the species *E. bigelowi*. The most consistent feature seems to be the number of turns in the intestinal spiral-valves, as such data do not show overlap between the species *E. bigelowi* and *E. pusillus* in any length class. This characteristic can also be seen in the data cited by Shirai and Tachikawa (1993).

The morphological relationship values presented in Figures 4, 5, 6 and 7, which are situated on the line for *E. pusillus*, were probably due to shrinkage of some of the fixed specimens; and in the case of first dorsal spines, because of damage that occurred to a few specimens during the fishing process. However, none of these errors caused problems to all the morphological relationships and were not repeated for the same specimens in all measurements.

Kreffft (1968) described the occurrence of *E. gracilispinis*, *E. lucifer* and *E. pusillus* in Uruguayan waters. Nevertheless, some of the occurrence sites mentioned by Kreffft (1968) are situated in Brazilian waters (SOTO, 2000), and therefore were the first records of these three species for Brazil.

However, Shirai and Tachikawa (1993), from the analysis of the morphological data cited by Kreffft (1968), concluded that the first occurrence of *E. pusillus*, described coincidentally for southern Brazil, actually refers to specimens of *E. bigelowi*.

The results obtained confirm that the three species of the genus *Etmopterus* common on the upper slope off southern Brazil at depths down to 600 m are *E. gracilispinis*, *E. lucifer* and *E. bigelowi*, while the presence of *E. pusillus* remains to be confirmed.

ACKNOWLEDGEMENTS

We acknowledge the researchers of the "Score Sul REVIZEE Program" who contributed to the fishery surveys, the *R/V Atlântico Sul* crew, and the Conselho Nacional de Desenvolvimento Científico e Tecnológico (CNPq) for the scholarship provided.

REFERENCES

- BERNARDES, R. A.; FIGUEIREDO, J. L.; RODRIGUES, A. R.; FISCHER, L. G.; VOOREN, C. M.; HAIMOVICI, M.; ROSSI-WONGTSCHWSKI, C. L. D. B. **Peixes da Zona Econômica Exclusiva da região sudeste-sul do Brasil**: Levantamento com armadilhas, pargueiras e rede de arrasto de fundo. São Paulo: EDUSP, 2005. 304 p.
- COMPAGNO, L. J. V. **Sharks of the world**: An annotated and illustrated catalogue of shark species known to date. Part 1: Hexanchiformes to Lamniformes. Rome: FAO, 1984. 249 p. FAO Species Catalogue, v. 4, n. 1. FAO Fisheries Synopsis, n. 125.
- GÜNTHER, A. Report on the shore fishes procured during the voyage of H. M. S. "Challenger" in the years 1873-1876. **Report on the Scientific Results of the Voyage of H. M. S. Challenger**, Zoologie, v. 1, n. 6, p. 1-8, 32 pls, 1880.
- JORDAN, D. S.; SNYDER J. O. Descriptions of two new species of squaloid sharks from Japan. **Proc. U. S. natn. Mus.**, v.25, n. 1279, p. 79-81, 1902.
- KREFFFT, G. Neue und erstmalig nachgewiesene Knorpelfische aus dem Archibenthal des Südwestatlantiks, einschlie ÷lich einer Diskussion einiger Etmopterus - Arten südlicher Meere. **Arch. Fischereiwiss.**, v. 19, p. 1-42, 1968.
- LAST, P. R.; STEVENS, J. D. **Sharks and rays of Australia**. East Melbourne: Commonwealth Scientific Industrial Research Organization (CSIRO), 1994. 513 p.
- LAST, P. R.; BURGESS, G. H.; SÉRET, B. Description of six new species of lantern-sharks of the genus *Etmopterus* (Squaloidea: Etmopteridae) from the Australasian region. **Cybium**, v. 26, p. 203-223, 2002.
- LOWE, R. T. A supplement to a synopsis of the fishes of Madeira. **Proc. Zool. Soc. of Lond.**, v. 7, p. 76-92, 1839 (also publ. in Trans. zool. Soc. Lond., v. 3, n. 1, p. 1-20, 1842).
- MUSICK, J. A.; HARBIN, M. M.; COMPAGNO, L. J. V. Historical zoogeography of the Selachii. In: CARRIER, J. C.; MUSICK, J. A. HEITHAUS (Ed.). **Biology of sharks and their relatives**. Boca Raton, Fla.: CRC Press, p. 55-60, 2004.
- RAFINESQUE, C. S. **Caratteri di alcuni nuovi generi e nuove specie di animali e piante della Sicilia, con varie osservazioni sopra i medisimi**. Palermo: 1810. 105 p.
- SADOWSKY, V.; ARFELLI, C. A.; AMORIM, A. F.. First record of broadbanded lanternshark, *Etmopterus gracilispinis* Kreffft, 1968 (Squalidae), in the Brazilian waters. **Bol. Inst. Pesca, São Paulo**, v. 13, n. 2, p. 1-4, 1986.
- SHIRAI, S.; TACHIKAWA, H. Taxonomic resolution of the *Etmopterus pusillus* species group (Elasmobranchii, Etmopteridae), with a description of *E. bigelowi*, n. sp. **Copeia**, v. 2, p. 483-495, 1993.
- SOTO, J. M. R. Revisão da ocorrência de tubarões etmopteríneos na costa brasileira, com dois novos registros de *Etmopterus bigelowi* Shirai & Tachikawa, 1993 (Chondrichtyes, Dalatiidae, Etmopiterinae). **Biotemas**, v. 13, n. 2, p. 167-178. 2000.
- SOTO, J. M. R. First record of southern lanternshark *Etmopterus granulosus* (Günther, 1880) (Squaliformes, Dalatiidae), in Brazilian coast. **Mare Magnum**, v.1, n. 1, p. 7-10, 2001.

(Manuscript received 30 May 2007; revised 24 August 2007; accepted 12 November 2007)