

REVIEW

Lysosomal membrane permeabilization in cell deathP Boya¹ and G Kroemer^{2,3,4}

¹3D Lab (Development, Differentiation and Degeneration), Department of Cellular and Molecular Physiopathology, Centro de Investigaciones Biológicas, CSIC, Madrid, Spain; ²INSERM U848, Pavillon de Recherche 1, Villejuif, France; ³Institut Gustave Roussy, Pavillon de Recherche 1, Villejuif, France and ⁴Université Paris Sud/Paris 11, Pavillon de Recherche 1, Villejuif, France

Mitochondrial outer membrane permeabilization (MOMP) constitutes one of the major checkpoint(s) of apoptotic and necrotic cell death. Recently, the permeabilization of yet another organelle, the lysosome, has been shown to initiate a cell death pathway, in specific circumstances. Lysosomal membrane permeabilization (LMP) causes the release of cathepsins and other hydrolases from the lysosomal lumen to the cytosol. LMP is induced by a plethora of distinct stimuli including reactive oxygen species, lysosomotropic compounds with detergent activity, as well as some endogenous cell death effectors such as Bax. LMP is a potentially lethal event because the ectopic presence of lysosomal proteases in the cytosol causes digestion of vital proteins and the activation of additional hydrolases including caspases. This latter process is usually mediated indirectly, through a cascade in which LMP causes the proteolytic activation of Bid (which is cleaved by the two lysosomal cathepsins B and D), which then induces MOMP, resulting in cytochrome *c* release and apoptosome-dependent caspase activation. However, massive LMP often results in cell death without caspase activation; this cell death may adopt a subapoptotic or necrotic appearance. The regulation of LMP is perturbed in cancer cells, suggesting that specific strategies for LMP induction might lead to novel therapeutic avenues.

Oncogene (2008) 27, 6434–6451; doi:10.1038/onc.2008.310

Keywords: lysosomal membrane permeabilization; cathepsins; programmed cell death; apoptosis; autophagy

Introduction

Physiological and pathological cell death have been classified according to morphological criteria into at least three categories: type I cell death or apoptosis; type II cell death or autophagic cell death; and type III cell death or necrosis (Clarke, 1990; Kroemer *et al.*, 2005;

Galluzzi *et al.*, 2007). Apoptosis or type I programmed cell death is characterized by cell rounding and nuclear condensation. The cell diminishes in size, the plasma membrane starts to bleb and the cell finally fragments into apoptotic bodies that are engulfed by neighboring cells where they are degraded within phagolysosomes. This type of cell death has been extensively studied and (some of) the molecular pathways have now been elucidated. Among these, mitochondrial outer membrane permeabilization (MOMP) and caspase activation have prominent functions: the former determines the point of no return of the lethal process; the latter orchestrates the morphological and biochemical changes that characterize apoptosis (Taylor *et al.*, 2008; Youle and Strasser, 2008). MOMP is regulated by the Bcl-2 family of proteins, which act as inducers or blockers of the process. As a result of MOMP, proapoptotic molecules such as cytochrome *c* are released into the cytosol and contribute to the activation of caspases (Kroemer *et al.*, 2007; Taylor *et al.*, 2008; Youle and Strasser, 2008). Caspases are aspartic proteases that are responsible for the degradation of hundreds of cytoplasmic and nuclear proteins in the apoptotic cell. Caspases can be activated after MOMP or independently of MOMP (Taylor *et al.*, 2008). Other mitochondrial proteins such as the apoptosis-inducing factor (AIF) are also released from the mitochondria during apoptosis and activate caspase-independent cell death pathways (Modjtahedi *et al.*, 2006).

Autophagy is a lysosomal degradative pathway by which cells degrade and recycle macromolecules and organelles (Mizushima, 2007). As a result of the discovery of the proteins responsible for this phenomenon—the autophagy (Atg) proteins—and the implication of autophagy in a plethora of pathological situations, this process has received great attention (Klionsky, 2007; Levine and Kroemer, 2008). Although autophagy was initially described as a type of cellular demise, it remains unclear whether autophagy represents an independent mode of programmed cell death, a backup mechanism of cell death when apoptosis is inhibited or simply a stress response that is activated in damaged cells (Maiuri *et al.*, 2007). Indeed, one possible explanation for the frequent presence of autophagosomes in dying cells is that cells upregulate autophagy in an attempt to eliminate toxic molecules or damaged organelles and that cells die from apoptosis or necrosis only once the autophagic system of defense has been

Correspondence: Dr P Boya, Centro de Investigaciones Biológicas, Consejo Superior de Investigaciones Científicas, Ramiro de Maetzu 9, E-28040 Madrid, Spain. E-mail: pboya@cib.csic.es or Dr G Kroemer, INSERM U848, Institut Gustave Roussy, Pavillon de Recherche 1, 39 rue Camille-Desmoulins, F-94805 Villejuif, France. E-mail: kroemer@igr.fr

overwhelmed. Necrosis has been defined as a type of cell death that lacks the features of apoptosis and autophagy, and is often considered to be an uncontrolled process. However, recent research suggests that its occurrence and course might be regulated. Following a signaling- or damage-induced lesion, necrosis can include signs of controlled processes such as mitochondrial dysfunction, enhanced generation of reactive oxygen species, ATP depletion, proteolysis by calpains and cathepsins, and early plasma membrane rupture. In addition, the inhibition of specific proteins involved in regulating apoptosis or autophagy can change the morphological appearance of cell death to necrosis (Festjens *et al.*, 2006; Golstein and Kroemer, 2007).

Cell death can be triggered by toxic insults from the extracellular or intracellular milieu. Thus, the damage of nuclear DNA or the endoplasmic reticulum both induce apoptotic cell death that is dependent on MOMP and caspase activation (Ferri and Kroemer, 2001; Boya *et al.*, 2002). In addition, lysosomal damage can induce MOMP-dependent cell death and lysosomal proteases released into the cytosol have been implicated in apoptotic cell death. In this review, we will focus on recent discoveries that implicate lysosomal membrane permeabilization (LMP) in cell death.

Lysosomes and LMP

Lysosomes are cytoplasmic membrane-enclosed organelles that contain hydrolytic enzymes and that control the intracellular turnover of macromolecules (Luzio *et al.*, 2007). Lysosomes contain many different types of hydrolytic enzymes including proteases, lipases, nucleases, glycosidases, phospholipases, phosphatases and sulfatases that usually exert their maximal enzymatic activity at low pH. The acidic milieu of lysosomes (pH \leq 5) is maintained by a vacuolar ATPase that pumps protons from the cytosol into the lysosomal lumen (Luzio *et al.*, 2007). The lysosomal membrane is protected from the acidic hydrolases by lysosome-specific expression of membrane proteins such as Lamp-1 and Lamp-2, which are heavily glycosylated and hence resist digestion (Eskelinen, 2006). Several degradation pathways converge at the level of lysosomes. This applies to the endocytotic degradation of plasma membrane receptors and proteins from the extracellular matrix, as well as the phagocytotic degradation of bacteria and apoptotic cells. If the material that is degraded derives from the cell itself, the process of lysosome-dependent degradation is called autophagy (Mizushima, 2007). During macroautophagy, cytoplasmic components such as long-lived and damaged proteins, as well as entire organelles, are degraded and recycled to generate ATP as well as new building blocks for anabolic processes (Levine and Kroemer, 2008). Indeed, autophagy protects cells under conditions of nutrient starvation and, in some circumstances of cellular stress, cells die by apoptosis when autophagy is inhibited either pharmacologically or by

depletion of essential *atg* gene products (Boya *et al.*, 2005; Gonzalez-Polo *et al.*, 2005).

The high content of hydrolytic enzymes in lysosomes makes them potentially harmful to the cell. If the lysosomal membrane is damaged, lysosomes release their contents into the cytosol, setting off indiscriminate degradation of cellular components. In addition, massive lysosomal breakdown may induce cytosolic acidification, which in turn can induce cell death by necrosis. This concept was first appreciated by de Duve (1959), the discoverer of lysosomes, who termed them 'suicide bags'. However, as we will discuss, partial and selective LMP induces cell death by apoptosis. Under these circumstances, proteases liberated from the lysosomal lumen activate a controlled mode of cell death (for earlier reviews see Guicciardi *et al.*, 2004; Kroemer and Jaattela, 2005; Tardy *et al.*, 2006; Terman *et al.*, 2006). We will refer to this process as LMP.

Lysosomal proteases that have been implicated in cell death are those cathepsins that remain active at neutral pH, such as cathepsin B (CB), cathepsin D (CD) and cathepsin L (CL). These proteases activate apoptotic effectors such as mitochondria and/or caspases. In spite of the extensive characterization of apoptosis mechanisms, the involvement of lysosomes in cell death has been neglected for several reasons. First, at the level of transmission electron microscopy, the ultrastructure of lysosomes appears intact during apoptosis, even when LMP can be detected by immunofluorescence techniques. Second, several pharmacological inhibitors of apoptosis (caspase inhibitors) also block lysosomal proteases when they are used at high concentrations (Foghsgaard *et al.*, 2001). Thus, the cytoprotective effects of inhibitors such as Z-VAD-fmk may well include hitherto neglected effects on lysosomal proteases (Turk and Stoka, 2007).

'Lysosomotropic agents' accumulate within lysosomes. This term was coined by de Duve *et al.* (1974) to describe weakly basic amines that attain concentrations several 100-fold higher within the lysosomes than in the cytosol. Lysosomotropic amines freely diffuse across membranes in their uncharged form but become trapped in their protonated (non-diffusible) form when they are localized in acidic vesicles. In the 1980s, several lysosomotropic compounds were synthesized that were capable of lysing lysosomal membranes. Accumulation of the protonated form above a certain threshold concentration results in their acquisition of detergent-like properties, which induce lethal lysosomal destabilization. As a proof of principle for this concept, lysosomotropic detergents cannot lyse red blood cells, which do not possess lysosomes (Firestone *et al.*, 1982; Miller *et al.*, 1983).

Lysosomal membrane permeabilization: its detection

The distinctive sign of LMP is the translocation of soluble lysosomal components (including enzymes) from the lysosomal lumen to the cytosol. Accordingly, LMP can be measured by a variety of simple techniques.

Immunofluorescence techniques using antibodies against cathepsins such as CB and CD reveal the redistribution of these proteases from lysosomes to the cytosol (Figure 1a). In healthy cells, CB- or CD-specific immunostainings reveal cytoplasmic punctate structures that are surrounded by lysosomal membrane proteins such as Lamp-1 and Lamp-2. After LMP, the immunofluorescence detection of CB or CD reveals a diffuse staining throughout the entire cell (Boya *et al.*, 2003a). The translocation of CB or CD from lysosomes to the cytosol can also be detected by immunoblots of subcellular fractions, typically cytosolic versus heavy membrane fractions (which include mitochondria and

lysosomes) (Michallet *et al.*, 2004). Cytosolic protease activity can be measured using lysosome-impermeable cathepsin substrates such as pepstatin BODIPY (Yin *et al.*, 2005). Alternatively, protease activities can be monitored in cytosolic extracts with cathepsin-specific substrates such as zFR-amino-trifluoromethylcoumarin (Groth-Pedersen *et al.*, 2007). Cytosolic cathepsin translocation can also be visualized by transfecting cells with fusion constructs encoding cathepsins that have been coupled to fluorescent proteins (Werneburg *et al.*, 2002, 2007; Broker *et al.*, 2005). Furthermore, lysosomal destabilization can be determined by pulse-chase experiments, in particular by loading lysosomes with

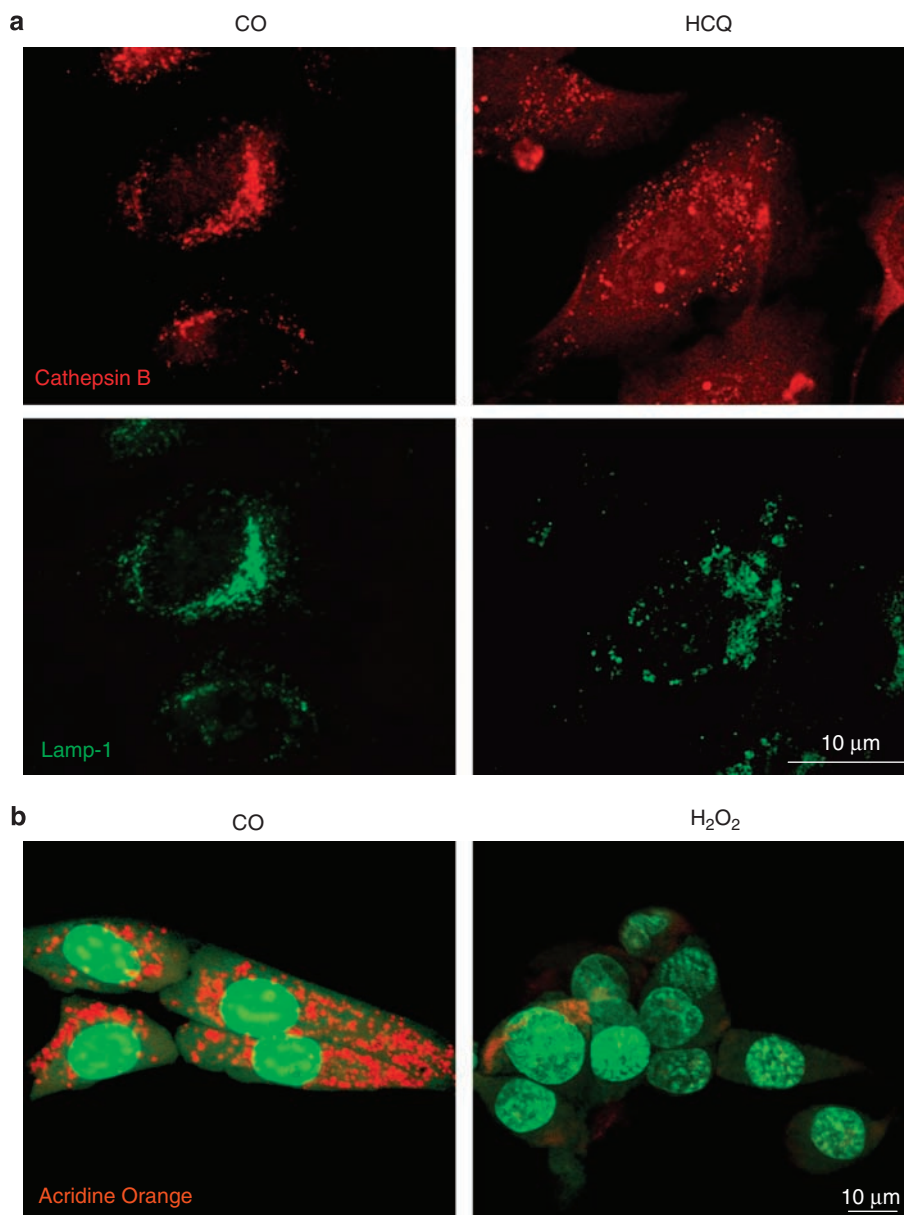


Figure 1 LMP detection by immunofluorescence in cell culture. (a) HeLa cells were treated with 30 μg/ml hydroxychloroquine (HCQ) for 3 h, fixed and stained for immunofluorescence detection of cathepsin B (red) and Lamp1 (green). Note that after LMP, cathepsin B diffuses throughout the cytosol. (b) 3T3 fibroblasts were cultured for 3 h with 150 μM H₂O₂ and stained for 15 min with 10 μg/ml acridine orange. Note the loss of the punctate red staining of acidic organelles after H₂O₂ treatment. LMP, lysosomal membrane permeabilization.

fluorescent dextrans and observing the cytosolic release of the dye after lysosomal insult. Dextrans of different molecular weights can be used to assess the selectivity of lysosomal permeabilization (Bidere *et al.*, 2003).

Other methods to assess LMP are based on the use of lysosomotropic fluorochromes. Lysosomotropic probes such as the LysoTracker dyes from Invitrogen (Carlsbad, CA, USA) accumulate inside acidic organelles (which include lysosomes and late endosomes) and can be visualized by fluorescence microscopy or flow cytometry (De Milito *et al.*, 2007). Decreased LysoTracker fluorescence may reflect LMP and/or an increase in lysosomal pH, meaning that this method is not absolutely specific for LMP. Following LMP, cells manifest less cytosolic puncta by fluorescence microscopy and appear weakly fluorescent when analysed by flow cytometry (Boya *et al.*, 2003b). Some LysoTracker probes are compatible with aldehyde fixation and thus may be combined with the immunofluorescence detection of proteins.

Another probe used to measure the functional state of lysosomes is acridine orange (AO). AO is a lysosomotropic metachromatic fluorochrome. When excited with blue light, AO emits red fluorescence at high concentrations (when it is present in lysosomes) and green fluorescence at low concentrations (when it is present in the cytosol and the nucleus) (Figure 1b). AO-loaded cells manifest reduced red fluorescence and increased green fluorescence after LMP (Antunes *et al.*, 2001). AO may be used either in live fluorescence microscopy or flow cytometry (Boya *et al.*, 2003a; Michallet *et al.*, 2004; Trinchieri *et al.*, 2007).

Lysosomal membrane permeabilization: complete or partial

Lysosomal membrane permeabilization is one mechanism for the induction of cell death. As mentioned above, complete disruption of lysosomes provokes uncontrolled cell death by necrosis. In contrast, partial and selective LMP induces the controlled dismantling of the cell by apoptosis. Several reports indicate that, in response to some lethal stimuli, not all lysosomes are permeabilized at the same time, although the mechanisms explaining this heterogeneity remain elusive. Large lysosomes seem to be particularly susceptible to the action of LMP-inducing agents (Ono *et al.*, 2003). In addition, the production of intracellular mediators such as reactive oxygen species (ROS), which have a spatially limited range of activity, may induce the permeabilization of lysosomes only in those subcellular regions that are near to mitochondria, the major ROS-generating organelles. Therefore, lysosomes that are localized in the proximity of uncoupled mitochondria are more likely to suffer damage to their membranes than distant lysosomes. Moreover, lysosomes constitute the principal reservoir of chelatable iron, which accumulates upon the autophagic degradation of iron-containing proteins including mitochondrial cytochromes and ferritin. Iron-catalysed Fenton reactions, which produce highly reactive pro-oxidants, thus may damage lysosomal

membranes. Iron overload, as it occurs in some pathologies and aging processes, can increase the susceptibility of lysosomes to LMP (Mak and Weglicki, 1985; Link *et al.*, 1993).

A second important question regarding LMP is whether it occurs through non-selective rupture of the membrane or whether specific pores are formed that allow for the selective translocation of molecules up to a certain size through the partially permeable lysosomal membrane. Through the use of fluorescently labeled dextran molecules of different sizes (Bidere *et al.*, 2003), the induction of LMP by staurosporine was shown to release low-molecular weight dextrans into the cytosol (10 and 40 kDa), but not larger molecules (dextrans of 70 and 250 kDa). Accordingly, the hexosaminidase enzyme (a 250 kDa protein normally resident in lysosomes) was retained within these organelles (Bidere *et al.*, 2003), in conditions in which CB, CL (both ~37 kDa) and CD (44 kDa) were released. Nevertheless, it is currently unclear whether such a molecular sieve effect can be mediated by proteinaceous pores present in lysosomal membranes. A number of reports indicate that different cathepsins (CB, CL and CD) simultaneously translocate after LMP is induced (Kagedal *et al.*, 2001a; Bidere *et al.*, 2003; Zhao *et al.*, 2003; Michallet *et al.*, 2004; Chen *et al.*, 2005; Laforge *et al.*, 2007), although in most of the studies the inhibition or genetic ablation of a single cathepsin isoform was sufficient to retard cell death (Kagedal *et al.*, 2001a; Bidere *et al.*, 2003; Laforge *et al.*, 2007). Moreover, in some cases in which cathepsins were detected in the cytosol, lysosomes still could be labeled with lysosomotropic fluorochromes, indicating that the cytosol-lysosome pH gradient was maintained (Bidere *et al.*, 2003) and that LMP may occur selectively in a subset of lysosomes. It remains a matter of speculation whether special transporters are responsible for the selective relocation of lysosomal proteins or whether transient pores are formed that lead to the release of proteins up to a maximum size, then reclose and facilitate rebuilding of a proton gradient. In the outer mitochondrial membrane, proapoptotic proteins Bax and Bak may form transient pores that allow for the translocation of a number of molecules larger than 100 kDa without provoking a rupture of the membrane (Kuwana *et al.*, 2005). According to some reports, Bax is also capable of inducing LMP by acting directly on the lysosomal membrane (Kagedal *et al.*, 2005; Feldstein *et al.*, 2006). Nonetheless, the implication of proteins from the Bcl-2 family in LMP has not been studied extensively thus far.

Inducers of LMP

A large panel of distinct agents and molecules can induce LMP (Table 1 and Figure 2), although the best-studied mechanism of LMP is ROS-mediated lysosomal destabilization (Terman *et al.*, 2006). Indeed, enhanced ROS generation precedes LMP and cell death in many settings. Indirect damage to the lysosomal membrane by ROS is mediated by the intralysosomal accumulation of

Table 1 Inducers of LMP

<i>Inducer</i>	<i>Example</i>	<i>Mechanisms</i>	<i>Reference</i>
ROS	H ₂ O ₂ , naphthazarine, redox cycling quinones, fenretinide	Chemical modification of lysosomal membrane lipids?	Terman <i>et al.</i> (2006)
Lysosomotropic agents	Sphingosine, hydroxychloroquine, MDL-72,527, LCL204, BPC, <i>N</i> -dodecyl-imidazole, 3-aminopropanal Detergents (MSDH, siramesine)	LMP due to detergent-like effects.	Kagedal <i>et al.</i> (2001a); Yu <i>et al.</i> (2003); Boya <i>et al.</i> (2003b) Li <i>et al.</i> (2000); Ostenfeld <i>et al.</i> (2005) Boya <i>et al.</i> (2003a)
Lipids	Antibiotics (norfloxacin, ciprofloxacin) Fatty acids, bile salts, cholesterol oxidation products, palmitate, HePC		Feldstein <i>et al.</i> (2006); Paris <i>et al.</i> (2007)
Bcl-2 family proteins	Bax	Formation of proteaceous pores within lysosomal membranes?	Kagedal <i>et al.</i> (2005); Feldstein <i>et al.</i> (2006)
Caspases	Caspase-9, caspase-8	Digestion of lysosomal proteins or indirect effects?	Werneburg <i>et al.</i> (2004); Gyrd-Hansen <i>et al.</i> (2006)
Cathepsins	Cathepsin B	Digestion of lysosomal proteins?	Werneburg <i>et al.</i> (2002)
Microtubule toxins	Vincristine, vinorelbine, vinblastine, epothilone B, paclitaxel	Unknown	Groth-Pedersen <i>et al.</i> (2007)
Photodamage	NPe6, ATXs10	Lysosomal membranes	Xue <i>et al.</i> (2003); Ichinose <i>et al.</i> (2006)
Poyphenols	Resveratrol	Unknown	Trincheri <i>et al.</i> (2007)
Receptors	CD3, PHA, TRAIL, TNF- α	Unknown	Guicciardi <i>et al.</i> (2000); Heinrich <i>et al.</i> (2004)
Lysosomal proteins	LAPF	Pores?	Chen <i>et al.</i> (2005); Li <i>et al.</i> (2007)
DNA damage	p53, camptothecin, etoposide	Unknown	Emert-Sedlak <i>et al.</i> (2005); Paquet <i>et al.</i> (2005)
Silica	ROS?	Unknown	Thibodeau <i>et al.</i> (2004); Hamilton <i>et al.</i> (2007)
Toxins	Cobra venom, yesotoxin, crotoxin	Direct effect on lysosomal membranes?	Feofanov <i>et al.</i> (2005); Malagoli <i>et al.</i> (2006); Yan <i>et al.</i> (2006)

Abbreviations: LMP, lysosomal membrane permeabilization; ROS, reactive oxygen species; TNF- α , tumour necrosis factor alpha.

iron (Eaton and Qian, 2002). Free iron catalyses the conversion of hydrogen peroxide (which freely crosses membranes) into hydroxyl radicals. Accordingly, iron loading increases the fragility of lysosomal membranes (Mak and Weglicki, 1985; Link *et al.*, 1993). Conversely, desferrioxamine mesylate, an iron chelator that specifically accumulates inside lysosomes by fluid-phase endocytosis, can inhibit lysosomal-mediated cell death induced by oxidant challenge (Doulias *et al.*, 2003; Yu *et al.*, 2003; Kurz *et al.*, 2006). A positive feedback loop between LMP and mitochondrial damage exists during oxidation-induced cell death, suggesting that both iron chelation in lysosomes and inhibition of ROS production by mitochondria may have cytoprotective effects (Terman *et al.*, 2006).

Another putative mediator of LMP is the sphingolipid sphingosine. As a lipophilic weak base, sphingosine is lysosomotropic. Upon protonation, sphingosine accumulates within the acidic compartment where it may act as a detergent. Limited doses of sphingosine induce a cascade of lethal events including LMP, caspase activation, as well as the dissipation of the mitochondrial inner transmembrane potential (Kagedal *et al.*, 2001a). High doses of sphingosine rapidly cause

extensive lysosomal rupture culminating in rapid necrosis (Kagedal *et al.*, 2001b). The intracellular levels of sphingosine increase after TNF- α (tumor necrosis factor alpha) treatment, particularly in the liver where sphingosine has been implicated in LMP. TNF- α or sphingosine induces LMP in CB^{+/+} but not CB^{-/-} hepatocytes *in vitro*, and sphingosine permeabilizes hepatocyte lysosomes isolated from CB^{+/+} but not CB^{-/-} livers as assessed by LysoTracker (Werneburg *et al.*, 2002). In addition, the overexpression of a dominant-negative factor associated with neutral sphingomyelinase activation (FAN) reduces LMP, CB translocation and diminishes apoptosis in a rat hepatoma cell line (Werneburg *et al.*, 2004).

Free fatty acids and bile salts can also induce LMP-dependent cell death (Roberts *et al.*, 1997; Feldstein *et al.*, 2004, 2006). Glycochenodeoxycholate is the primary bile salt induced during cholestasis. When added to a rat hepatoma cell line, glycochenodeoxycholate induces LMP, CB translocation, caspase activation and cell death, which can be effectively blocked by caspase inhibition and overexpression of the cathepsin inhibitor cystatin A (Jones *et al.*, 1998). This pathway seems to play a prominent role in animal models of

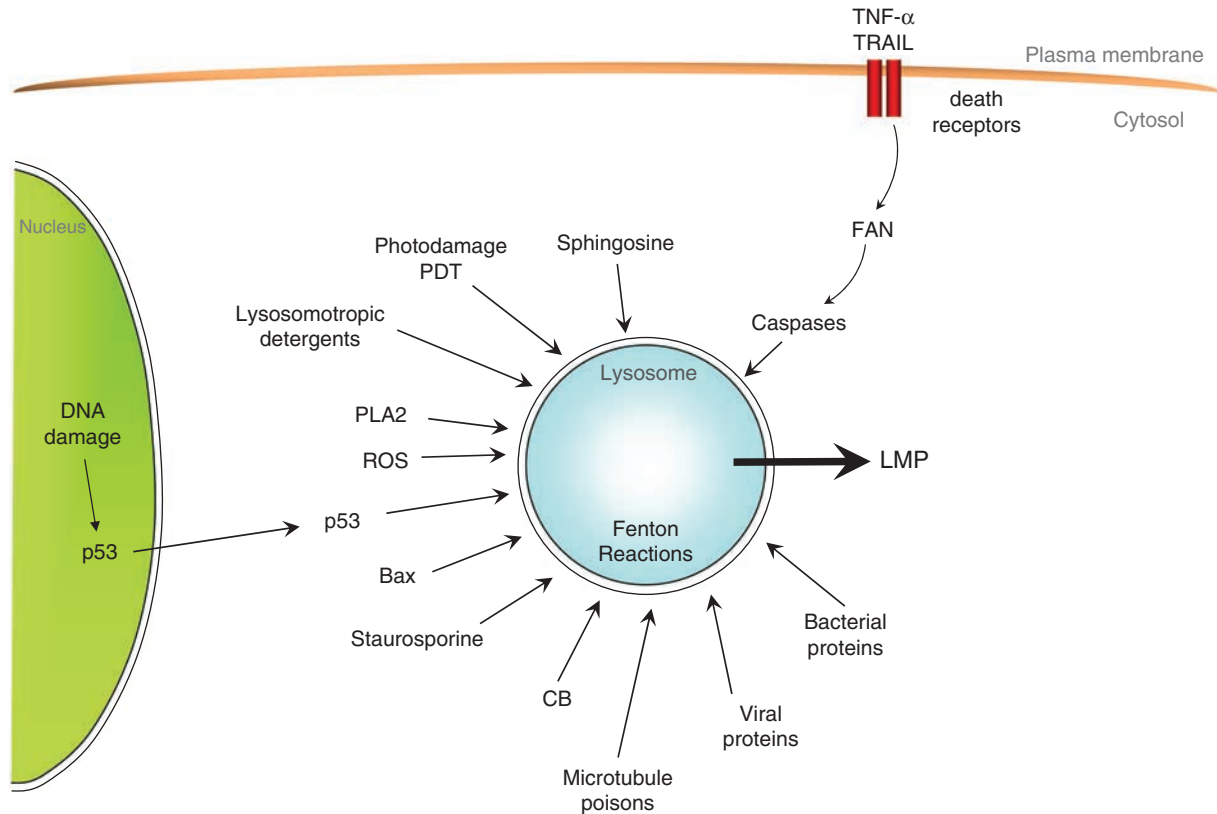


Figure 2 Pathways leading to the induction of LMP. For details see text. CB, cathepsin B; FAN, factor associated with neutral sphingomyelinase activation; LMP, lysosomal membrane permeabilization; PDT, photodynamic therapy; TNF- α , tumor necrosis factor alpha.

cholestasis where CB inactivation attenuates liver injury (Roberts *et al.*, 1997; Canbay *et al.*, 2003).

Hexadecylphosphocholine is an experimental anticancer agent that induces cell death through a lysosomal pathway characterized by partial lysosomal rupture and CB relocation. In this model, the overexpression of Bcl-2 and the addition of the pan caspase inhibitor Q-VD-OPH inhibit lysosomal rupture, but only at early time points, suggesting that lysosomal rupture is amplified by caspases and proapoptotic Bcl-2 family proteins, yet does not entirely rely on them in this system (Paris *et al.*, 2007). Thus, depending on the specific lipid, LMP induction may be a primary event (upstream of caspase activation) or occur downstream of the initiation of the apoptotic cascade.

The oxidation products of cholesterol are capable of inducing LMP, CD translocation and apoptotic cell death in macrophages (Yuan *et al.*, 2000). Several reports indicate that lysosomes are destabilized in macrophages exposed to oxidized low-density lipoprotein or 7 β -hydroxycholesterol, which produces leakage of lysosomal enzymes into the cytosol (CB, CD and CL) and apoptotic cell death. These effects are reversed by pre-exposing cells to the iron chelator, desferrioxamine (Li *et al.*, 1998; Yuan *et al.*, 2000; Li and Yuan, 2004). The cell death pathway following exposure to 7 β -hydroxycholesterol or 7 β -hydroxysitoesterol, the major oxidation products from cholesterol and plant sterols, is

associated with LMP (Roussi *et al.*, 2007). However, the cell death mechanism induced by each compound differs insofar as 7 β -hydroxycholesterol induces ROS accumulation, extensive MOMP and endonuclease G expression, whereas 7 β -hydroxysitoesterol does not induce any of these events (Roussi *et al.*, 2007). LMP occurs after exposing cells to these lipid oxidation products, more so in response to 7 β -hydroxysitoesterol than in response to 7 β -hydroxycholesterol. These two hydroxyphenols exhibit different lipophilic properties despite their very similar structure (Roussi *et al.*, 2007), indicating that slight variations in the hydrophobicity of lipid derivatives may have a strong influence on the cell death pathway that they activate.

Other examples of lysosomotropic detergents are *N*-dodecylimidazole and *O*-methyl-serine dodecylamide hydrochloride, which both induce LMP followed by caspase-3-dependent apoptosis at low doses (Li *et al.*, 2000; Zhao *et al.*, 2003) and necrosis (without caspase activation) at high doses (Li *et al.*, 2000). Siramesine is a sigma-2 receptor ligand that was initially developed to treat anxiety and depression. Its structure involves an amphiphilic amine, suggesting that it can act as lysosomotropic detergent. Indeed, siramesine induces a rise in lysosomal pH followed by LMP, CD release and caspase-independent cell death, which can be blocked by antioxidants and CB inhibitors yet does not require sigma-2 receptors (Ostenfeld *et al.*, 2005). L-leucyl-L-

leucine-methyl ester is taken up by cells through receptor-mediated endocytosis and accumulates inside lysosomes, thus inducing LMP, cathepsin release, cleavage of Bid, MOMP- and caspase-dependent apoptosis (Uchimoto *et al.*, 1999; Cirman *et al.*, 2004).

The activation of phospholipase A2 also induces LMP as the phospholipase A2 inhibitor 4-bromophenacyl bromide diminishes lysosomal rupture and apoptosis in a lymphoma cell line (Zhao *et al.*, 2001a, 2003; Marchi *et al.*, 2004). Interestingly, lysosomal enzymes activate phospholipase A2, thereby providing a positive feedback loop (Zhao *et al.*, 2001a). Phospholipase A2 also induces MOMP, ROS production and cytochrome *c* release, providing an efficient means to induce cell death by acting directly on lysosomes and mitochondria.

The Bcl-2 family of proteins are important apoptotic regulators as they are able to control MOMP (Youle and Strasser, 2008). After their activation and translocation to mitochondria, proapoptotic members of the family such as Bax and Bak induce MOMP, and this process is blocked by antiapoptotic members of the family such as Bcl-2 and Bcl-X_L. Moreover, when proteins from the BH3-only family, such as Bid, are activated, they interact with multidomain proteins of the Bcl-2 family, as well as with other mitochondrial proteins to promote apoptosis (Zamzami *et al.*, 2000; Youle and Strasser, 2008). The effects of Bcl-2 proteins are not confined to the regulation of MOMP; they also affect calcium homeostasis of the endoplasmic reticulum, autophagy and the unfolded protein response (Hetz and Glimcher, 2008). Recently, the proapoptotic Bcl-2 family member Bax has been shown to exert a direct effect on lysosomes. Thus, Bax can translocate from the cytosol to lysosomal membranes and induce LMP (Kagedal *et al.*, 2005). Fibroblasts cultured in the presence of the proapoptotic pan-tyrosine kinase inhibitor staurosporine exhibit a conformational change in Bax and its translocation to lysosomes, resulting in LMP and CD translocation to the cytosol (Kagedal *et al.*, 2005). The requirement of Bax for LMP has been demonstrated by comparing Bax^{+/+} and Bax^{-/-} hepatocytes exposed to long-chain fatty acids (Feldstein *et al.*, 2006). Thus, palmitate induces a conformational change in Bax that is typically linked to apoptosis (and that is detected by means of a monoclonal antibody that interacts with Bax only in its 'apoptotic' conformation, when the N terminus is exposed), resulting in the translocation of Bax to lysosomes. Indeed, genetic ablation of Bax expression and increased Bcl-X_L expression protect cells from palmitate-induced LMP and death (Feldstein *et al.*, 2004, 2006). Moreover, TRAIL has been recently shown to induce cell death in several cell lines following a pathway that involves the apical caspase-8-dependent JNK activation, which then induces the translocation of Bax and Bim (a BH3-only protein from the Bcl-2 family) to lysosomal membranes followed by LMP (Werneburg *et al.*, 2002). All these events occur upstream of mitochondrial changes (such as cytochrome *c* release and loss of the mitochondrial transmembrane potential), suggesting that the two proapoptotic Bcl-2 family members, Bim and Bax, can

induce LMP independently from and upstream of MOMP. siRNA-mediated downregulation of Bax expression has also been shown to protect cells from LMP and cell death after a hydrogen peroxide insult (Castino *et al.*, 2007). From studies of Bid^{-/-} cells, it appears clear that the TNF- α -mediated LMP and cell death of hepatocytes is Bid dependent (Guicciardi *et al.*, 2005). All these data suggest that Bcl-2 family members might modulate LMP in a similar way to their regulation of MOMP.

Other more recently identified LMP regulators are caspases, the activation of which has been shown to induce LMP-dependent apoptosis in response to some stimuli. For instance, TNF- α can induce LMP through caspase-8 and FAN, and the resulting CB translocation then accounts for cell death. Reportedly, FAN acts upstream of caspase-8 and Bid in a signaling cascade that culminates in lysosomal permeabilization (Werneburg *et al.*, 2004; Nagaraj *et al.*, 2006). Moreover, FAN has recently been shown to regulate the size of lysosomes (Mohlig *et al.*, 2007). Interestingly, FAN has striking structural homology with Lyst (lysosomal trafficking regulator), a BEACH protein mutated in Chediak-Higashi syndrome, which is a lysosomal storage disease characterized by severe immunological defects and peripheral neuropathies, and that is often diagnosed because of the presence of large lysosomes (Ward *et al.*, 2000). Caspases are activated upstream of LMP after TNF- α treatment of ME-180 cells but not after an identical treatment of WEHI-S cells, indicating that the relative hierarchical position of LMP and caspase activation depends on the cell type (Foghsgaard *et al.*, 2001). Caspases are activated in a mitochondria-dependent manner in many cell settings, as the final result of cytochrome *c* release from mitochondria and the formation of a multiprotein complex called the apoptosome. This complex, which is composed of cytochrome *c* as well as Apaf-1, results in the recruitment and allosteric activation of caspase-9, which then activates caspase-3 (Riedl and Salvesen, 2007). When mouse embryonic fibroblasts are challenged with TNF- α , caspase-9 can be activated through another Apaf-1-independent cell death cascade that involves LMP-dependent cathepsin activation, as well as caspase-8-dependent caspase-9 activation (Gyrd-Hansen *et al.*, 2006). In this cell type, caspase-9 has been identified as a new molecular link between the receptor-proximal caspase-8 activation and LMP. In contrast, proteins such as Bid and Bax do not seem to have any major function in the induction of LMP in TNF- α -stimulated mouse embryonic fibroblasts (Gyrd-Hansen *et al.*, 2006). Thus, TNF- α can induce different effectors to induce cell death depending on the cell type, as seen in combination treatments with IFN- γ (Li and Pober, 2005).

Interestingly, cathepsins have also been implicated as inducers of LMP. Hepatocytes from CB^{-/-} mice display less LMP after exposure to TNF- α , which may reflect the direct induction of LMP by CB (either acting from inside or outside the lysosome) or the existence of an amplification loop in which LMP induces CB activation, and CB then triggers further LMP (Werneburg *et al.*,

2002). Indeed, in an *in vitro* assay using isolated lysosomes, sphingosine was capable of permeabilizing liver lysosomes that had been isolated from CB^{+/+} livers but not from CB^{-/-} hepatocytes (Werneburg *et al.*, 2002). Similarly, the transfection-enforced overexpression of an endogenous CB inhibitory protein, Spi2a, can reduce LMP in TNF- α -treated cells (Liu *et al.*, 2003). In a model of acute H₂O₂ stress affecting primary alveolar type II cells, cathepsin inhibitors also reduce the extent of LMP (Yin *et al.*, 2005). Altogether, these data suggest that the lysosomal enzymes (CB and CD) may directly attack lysosomes (from inside or outside?) and facilitate LMP-mediated cell death. In addition, other proteases like calpains can induce lysosomal destabilization and LMP-dependent cell death, as this is suggested by the use of calpain inhibitors in stressed cells (Yap *et al.*, 2006; Cheung *et al.*, 2007).

There is some evidence that p53 can induce LMP upstream of MOMP, as indicated by experiments in cells expressing a thermolabile form of p53. When such cells are shifted from 37 °C (when p53 is destroyed) to 32 °C (when p53 accumulates), they manifest sequential LMP and MOMP (Yuan *et al.*, 2002). Recently, a new adaptor protein capable of translocating to the lysosomal membranes and inducing LMP has been described (Chen *et al.*, 2005). This protein, which is called LAPF (lysosome-associated protein containing PH and FYVE domains), belongs to the family of phafins and induces LMP-, MOMP- and caspase-independent cell death (Chen *et al.*, 2005). After TNF- α exposure and ionizing irradiation, LAPF specifically interacts with phosphorylated p53 and induces LMP. Silencing LAPF expression abrogates the lysosomal translocation of phosphorylated p53, whereas silencing p53 has no effect on the lysosomal translocation of LAPF (Li and Baker, 2007). Like LAPF silencing, silencing endogenous p53 expression in L929 cells can significantly impair TNF- α -induced LMP and apoptosis. Hence, phosphorylated p53 might translocate to the lysosome while forming a complex with the LAPF adaptor protein, locally stimulate LMP and finally induce apoptosis in a transcription-independent manner (Chen *et al.*, 2005; Li and Baker, 2007). However, p53 can also translocate to mitochondria and induce permeabilization of the outer mitochondrial membrane by forming complexes with the multidomain proteins from the Bcl-2 family, resulting in cytochrome *c* release (Mihara *et al.*, 2003; Chipuk *et al.*, 2004). Thus, it is tempting to speculate that p53 can recruit LAPF, and perhaps Bcl-2 family members, to induce LMP in a manner similar to that in which it triggers MOMP.

The apoptotic response of T lymphocytes stimulated by phytohemagglutinin and anti-CD3 in T lymphocytes is thought to mimic peripheral T-cell deletion induced by high-dose immune tolerance. This model of T-cell death has been shown to involve rapid LMP with CB and CL translocation that occurs before phosphatidylserine exposure on the outer leaflet of the plasma membrane and nuclear chromatin condensation (Michallet *et al.*, 2004). Caspase inhibition blocked nuclear pyknosis but had no effect on phosphatidyl-

serine exposure. In addition, cell death was only prevented by incubating the cells in the presence of CB inhibitors but not with inhibitors of CD or calpains. The mitochondrial release of cytochrome *c* was observed at a late stage, suggesting that MOMP was not required for inducing cell death in this model (Michallet *et al.*, 2004). However, this speculation awaits experimental verification.

A range of different viral proteins kill infected cells by facilitating the induction of MOMP (Boya *et al.*, 2004). In addition, several viral proteins such as Nef from human immunodeficiency virus-1, protein U7 from human papillomavirus type-16, parvovirus H1 and herpes simplex virus infection induce LMP- and cathepsin-dependent cell death (Kaznelson *et al.*, 2004; Di Piazza *et al.*, 2007; Laforge *et al.*, 2007). Cystatin C can block the enhanced CB activity observed in herpes simplex virus type-1-infected cells and concomitantly inhibits herpes simplex virus type-1 replication and host cell apoptosis (Peri *et al.*, 2007). The protein E7 encoded by human papillomavirus type-16 can induce caspase-dependent apoptosis in different cell lines. However, in U2OS cells, this protein alone does not induce apoptosis unless the cell-cycle regulator p21 is overexpressed, in which case E7 triggers CB-dependent cell death. This cell death is characterized by LMP and CB translocation, which is completely inhibited by the CB inhibitor CA074Me (Kaznelson *et al.*, 2004).

Mycobacterium tuberculosis-infected macrophages undergo cathepsin-dependent caspase-independent cell death (Lee *et al.*, 2006), and infection with *Bacillus Calmette-Guérin* also induces LMP and cell death (Sandes *et al.*, 2007). A recent report indicates that virulent strains of *M. tuberculosis* and *M. leprae* (but not *M. bovis* and *Bacillus Calmette-Guérin*) translocate from lysosomes to the cytosol, which then can cause apoptotic cell death within a week (van der Wel *et al.*, 2007). Thus, it is tempting to speculate that LMP may proceed in this setting and that intracellular pathogens have evolved mechanisms to exploit the lysosomal pathway for cell death induction.

Drugs that act on microtubules can also induce LMP- and caspase-independent cell death. This applies to microtubule destabilizing vinca alkaloids such as vincristine, vinorelbine and vinblastine (Groth-Pedersen *et al.*, 2007), as well as to compounds that stabilize microtubules such as paclitaxel, epothilone B and dicodermolide. All these agents reportedly induce LMP- and CB-dependent apoptosis (Broker *et al.*, 2004; Groth-Pedersen *et al.*, 2007). The general applicability of these findings, however, remains to be confirmed.

Proton pumps like the vacuolar-type H ATP-ase are involved in the control of cellular pH in normal and tumor cells, and they are targeted for the treatment of gastroesophageal acid-related diseases. Proton pump inhibitors, such as omeprazole, are weak bases that accumulate inside lysosomes (De Milito *et al.*, 2007). Proton pump inhibitors induce the early production of ROS that precedes the alkalization of lysosomal pH, LMP and cytosol acidification, as well as caspase-

Table 2 Inhibitors of LMP or post-LMP effector mechanisms

Name	Target	Type	Reference
Hsp70 family of proteins	LMP	Chaperone	Gyrd-Hansen <i>et al.</i> (2004); Daugaard <i>et al.</i> (2007b)
Deferioxamine	ROS, LMP	Iron chelator	Kurz <i>et al.</i> (2006)
α -tocopherol	ROS, LMP	Antioxidant	Bivik <i>et al.</i> (2007)
<i>N</i> -acetyl cysteine	ROS, LMP	Antioxidant	De Milito <i>et al.</i> (2007)
Vitamin C	ROS, LMP	Antioxidant	Roussi <i>et al.</i> (2007)
Bcl-2	Bax, Bid, LMP	Antiapoptotic Bcl-2 family protein	Zhao <i>et al.</i> (2001b)
3- <i>O</i> -methylsphingomyelin	Neutral sphingomyelinase	Lipid	Caruso <i>et al.</i> (2005)
Cystatins	Cystein proteases	Protease inhibitors	Jones <i>et al.</i> (1998); Peri <i>et al.</i> (2007)
Serpins	Serin proteases (caspases)	Protease inhibitors	Liu <i>et al.</i> (2004c)
E64d, CA074Me, R3032	Cathepsin B	Protease inhibitors	Werneburg <i>et al.</i> (2002); Michallet <i>et al.</i> (2004); Nagaraj <i>et al.</i> (2006)
Pepstatin A	Cathepsin D	Protease inhibitor	Roberg <i>et al.</i> (1999)
Aryl hydrocarbon receptor	Lysosomal membrane?	Steroid receptor	Caruso <i>et al.</i> (2006)

Abbreviations: LMP, lysosomal membrane permeabilization; ROS, reactive oxygen species.

independent cell death in B cells. Interestingly, cathepsin translocation occurred very late in omeprazole-treated cells, and cathepsin inhibitors failed to protect from apoptosis, whereas the antioxidant *N*-acetylcysteine did protect the cells from LMP and cell death (De Milito *et al.*, 2007). Thus, the participation of LMP in lethal signaling remains to be demonstrated in this model.

Endogenous inhibitors of lysosome-mediated cell death

Heat-shock (Hsp)70 proteins function as ATP-dependent chaperones that regulate the folding of newly synthesized proteins, the assembly of multiprotein complexes and the transport of proteins across cellular membranes (Daugaard *et al.*, 2007b). Hsp70 is frequently overexpressed in malignant tumors, and this overexpression is associated with a poor therapeutic outcome in human breast cancer (Daugaard *et al.*, 2007b). Hsp70 has a marked cytoprotective effect and inhibits apoptotic signaling by inhibiting MOMP, by reducing caspase activation or by neutralizing AIF (Garrido *et al.*, 2006). Hsp70 also localizes to lysosomal membranes (Rohde *et al.*, 2005) and can protect lysosomal membranes against LMP induced by different stimuli such as etoposide, TNF- α and oxidative stress (Nylandsted *et al.*, 2004) (Table 2). In addition, Hsp70 depletion mediated by antisense constructs or small interfering RNAs induces caspase-independent cell death of cancer cells but not of non-tumorigenic cells (Nylandsted *et al.*, 2000). The specific depletion of one protein of the Hsp70 family, Hsp70-2, triggers LMP- and cathepsin-dependent cell death (Daugaard *et al.*, 2007a). This pathway seems to be mediated by the lens epithelium-derived growth factor, which is a transcriptional co-activator that regulates the transcription of several stress genes including Hsp70-2 and that confers protection against several proapoptotic stimuli (Ganapathy *et al.*, 2003). Knockdown of lens epithelium-derived growth factor induces destabilization of

lysosomal membranes and caspase-independent cell death that cannot be avoided by Bcl-2 overexpression. Conversely, lens epithelium-derived growth factor upregulation protects lysosomal membranes and inhibits cell death induced by agents like siramesine, etoposide and TNF- α . Thus, lens epithelium-derived growth factor regulates LMP and cell death, presumably by regulating Hsp70-2 expression (Groth-Pedersen *et al.*, 2007).

Sphingomyelin and some of its derivatives (for example, 3-*O*-methylsphingomyelin, an inhibitor of neutral sphingomyelinase) can stabilize lysosomes against the lysosomal photosensitizer, *N*-aspartyl chlorin e6, which causes rapid loss of AO staining of acidic organelles, release of CD from late endosomes/lysosomes and the activation of procaspase-3, as well as TNF- α -induced LMP and cell death (Caruso *et al.*, 2005). These results point to the possibility that proteins, as well as non-proteinaceous molecules, act as endogenous regulators of LMP.

A host of proteins act as endogenous inhibitors of cathepsins and hence may avoid cell death after LMP, by neutralizing cathepsins that have been released into the cytosol. Cystatins are endogenous inhibitors of lysosomal cysteine proteases and they act as endogenous protectors of leakage after LMP by trapping and inhibiting cathepsins, protecting the cell from their protease activity. Cystatins are not very selective and inhibit endopeptidases in the picomolar range and exopeptidases in the nanomolar range (Turk *et al.*, 2001). Serpins (serine protease inhibitors) are a family of protease inhibitors that act either at the extracellular or at the intracellular levels (Silverman *et al.*, 2001; Law *et al.*, 2006). The majority of serpins inhibit serine proteases, although some of them can inhibit caspases and cysteine proteases from the papain family, such as cathepsins B, L and K (Law *et al.*, 2006). Some intracellular members of the serpin family are able to block LMP-dependent cell death. Serpin 2A has been shown to block caspase-independent, LMP- and CB-dependent cell death triggered by TNF- α (Liu *et al.*,

2004c). Moreover, serpin 2A, a transcriptional nuclear factor- κ B target, is upregulated in memory T-cell precursors, facilitating memory T-cell development by blocking CB-dependent cell death (Liu *et al.*, 2004b). Another member of the serpin family, hurpin, blocks CL but not CB and confers resistance to ultraviolet light-induced apoptosis in human keratinocytes (Welss *et al.*, 2003). Recently, an intracellular serpin from *C. elegans*, SRP-6, has been shown to protect against cell death induced by hypotonic shock, hypoxia, heat shock and paraquat, which are all stimuli that reportedly induce lysosomal rupture and cysteine protease-dependent cell death in worms (Abraham and Shaham, 2007; Luke *et al.*, 2007). Thus, serpins act as physiologically relevant inhibitors of LMP-mediated cell death.

Recently, overexpression of cFLIP has been shown to stimulate the p42/44 MAP-kinase pathway and to protect hepatocellular carcinoma cells from TRAIL-induced LMP and apoptosis (Guicciardi *et al.*, 2007). Moreover, pharmacological inhibition of p38, transfection with a p38 α dominant-negative mutant or knockout of the p38 α gene (in mouse embryonic fibroblasts) protects cells from apoptosis induced by the lysosomotropic photosensitizing compound, tetrakis-meso-(4-ethyleneglycol-2,3,5,6-tetrafluorophenyl) porphyrin (Kralova *et al.*, 2007). The molecular mechanism by which p38 MAPk regulates LMP and cell death remains elusive, although it may be related to p38 binding to lysosomes and endosomes through an interaction with p14 and MP1 proteins (Kolch, 2005).

Downstream signals leading to cell death after LMP

Depending on the lethal stimulus, the extent of LMP, the amount and type of cathepsins released into the cytoplasm, as well as the abundance of cathepsin inhibitors, LMP can trigger a variety of death-associated morphologies ranging from classical apoptosis to necrosis. Thus, LMP associated with cathepsin translocation may directly activate calpains and caspases, but LMP may also trigger the classical MOMP-caspase pathway, as well as MOMP- and caspase-independent apoptosis. Which lethal pathways are stimulated by LMP is influenced by the cellular context, including the cell type, the immortalization status and the genetic background. The main downstream signaling pathways leading to cell death after LMP are summarized in Figure 3.

As stated above, ROS are among the principal inducers of LMP. ROS-dependent LMP often initiates a cell death pathway that involves sequential CD translocation, MOMP with cytochrome *c* release and caspase-dependent apoptosis. Antioxidants, such as desferrioxamine mesylate, *N*-acetylcysteine and α -tocopherol, block LMP and hence prevent all subsequent steps of the apoptotic cascade (Zang *et al.*, 2001). Endogenous CB inhibitors such as cystatins block CB protease activity in paradigms of ROS-induced LMP-dependent cell death, which points to the involvement of CD (rather than CB) in this pathway. Thus, cystatin C upregulation has been observed in PC12 cells following 6-hydroxydopamine exposure, a classical model of

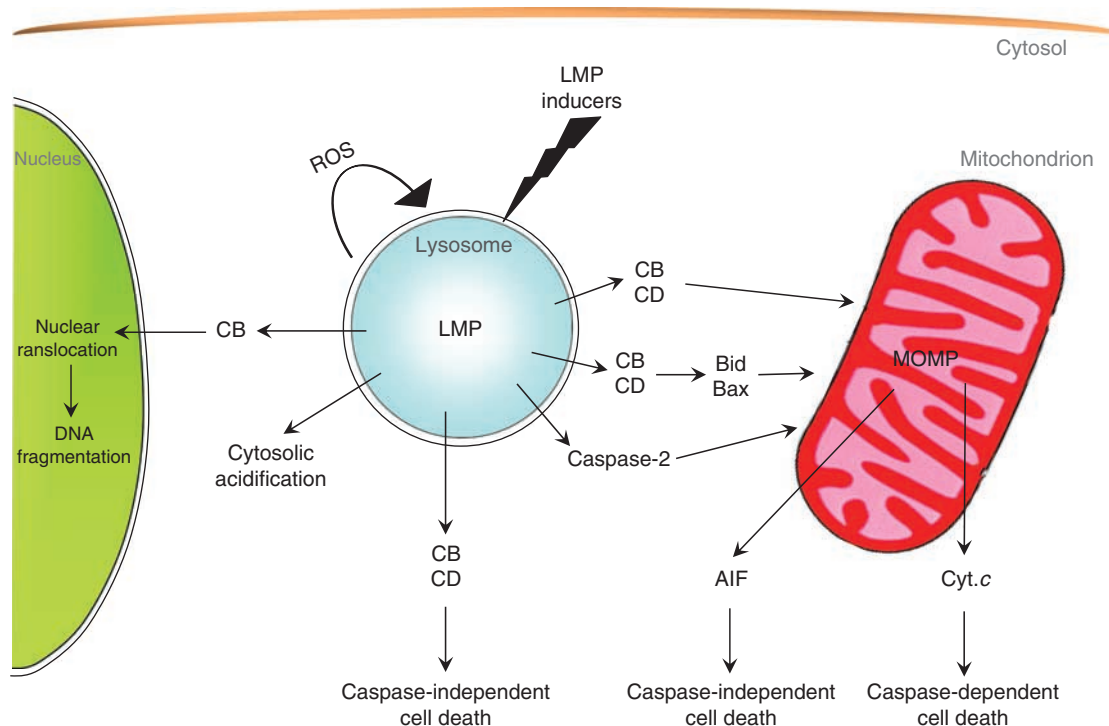


Figure 3 Lethal pathways activated after LMP. Note that a variety of different effector molecules can trigger a range of distinct modalities of cellular dismantling. The dominant pathway depends on the intensity of LMP, on the expression level of lysosomal hydrolases, the cytosolic concentrations of cathepsin inhibitors, the functional state of mitochondria, the concentration of caspases and their antagonists, as well as multiple additional factors. AIF, apoptosis-inducing factor; CB, cathepsin B; CD, cathepsin D; Cyt. *c*, cytochrome *c*; LMP, lysosomal membrane permeabilization; MOMP, mitochondrial outer membrane permeabilization.

ROS-mediated toxicity in which CD translocates to the cytosol and induces caspase-dependent cell death (Lee *et al.*, 2006). However, in other paradigms, CB does play a role in linking LMP to cell death.

What are then the signals that link LMP to MOMP? One prominent MOMP inducer is the BH3-only protein Bid, which requires proteolytic cleavage to become active. *In vitro* experiments performed at neutral pH showed that the papain-like cathepsins B, H, L, S and K cleave Bid predominantly at Arg(65) or Arg(71), whereas cathepsins C and X were unable to cleave Bid (Cirman *et al.*, 2004). In addition, when full-length Bid was treated with cathepsins B, H, L and S, the resulting cleavage product was fully capable of releasing cytochrome *c* from isolated mitochondria (Cirman *et al.*, 2004). CB-dependent Bid cleavage has been observed in various cell lines such as glioma cells killed by interleukin-24 (Yacoub *et al.*, 2008), TTC bladder cancer cells killed by Bacillus Calmette-Guérin (Sandes *et al.*, 2007), U2O2 osteosarcoma cells and oral squamous cell carcinoma with TRAIL (Garnett *et al.*, 2007) (Nagaraj *et al.*, 2006) and MCF-7 breast cancer cells exposed to camptothecin (Lamparska-Przybycz *et al.*, 2006). Bid also represents a direct downstream target of CD. Indeed, in cathepsin-deficient fibroblasts, the TNF-mediated apoptotic response was blocked at the level of Bid cleavage (Heinrich *et al.*, 2004). The CD inhibitor pepstatin A suppresses the cleavage of Bid by lysosomal extracts from a murine hepatoma in a cell-free system. Pepstatin A also delayed the induction of apoptosis in cell cultures treated with TNF- α and cycloheximide, which correlated with reduced Bid cleavage and reduced activation of pro-caspases-3/7 (Caruso *et al.*, 2006). In human neutrophils, fimbriated *Escherichia coli* bacteria can induce LMP- and CD-dependent Bid cleavage (Blomgran *et al.*, 2007). Thus, CB- or CD-mediated Bid cleavage emerges as a key connection between LMP and MOMP.

Several reports indicate that LMP can initiate a caspase-independent cell death pathway, as caspase inhibitors fail to block cell death. For example, microtubule-stabilizing agents such as epothilone B, discodermolide and paclitaxel reportedly induce CB-dependent and caspase-independent cell death, as evidenced by the significant cytoprotection conferred by the CB inhibitor CA074-Me (but not the broad-spectrum caspase inhibitor Z-VAD-fmk) (Broker *et al.*, 2004). However, microtubule poisons have been shown to induce either caspase-dependent or caspase-independent cell death, depending on the cell type. Similarly, TRAIL can induce LMP- and caspase-dependent apoptosis (Werneburg *et al.*, 2007) or LMP- and caspase-8-independent cell death (Garnett *et al.*, 2007), depending on the cell type. Downregulation of Hsp70, which protects lysosomal membranes from LMP-inducing stimuli, induces caspase-independent cell death in breast cancer cells (Nylandsted *et al.*, 2000). Macrophages infected with high multiplicities of infection of *M. tuberculosis* induce LMP and cell death that cannot be blocked by caspase inhibitors (Lee *et al.*, 2006). The distal death effectors in these systems have not been

characterized in detail, although AIF has been shown to be one of the main effectors of caspase-independent cell death (Modjtahedi *et al.*, 2006). During apoptosis, AIF translocates from mitochondria to the nucleus where it induces DNA degradation (Modjtahedi *et al.*, 2006). AIF has proapoptotic activity after LMP in activated T lymphocytes following exposure to staurosporine (Bidere *et al.*, 2003) and after LAPF overexpression, a lysosomal protein capable of inducing LMP-dependent and caspase-independent apoptosis in mouse fibrosarcoma cells (Chen *et al.*, 2005). Thus, AIF may be responsible for promoting caspase-independent cell death after LMP. Last, as a high level of oxidative stress is a common occurrence during LMP induction, caspases may become inactivated because of ROS-mediated oxidation (Mannick *et al.*, 2001).

In some cases, LMP and subsequent MOMP are linked with each other by the activation of caspase-2. In mouse hepatocytes, TNF- α triggers Bid-dependent lysosomal permeabilization, followed by the release of CB into the cytosol and the activation of caspase-2. Caspase-2 then facilitates efficient mitochondrial cytochrome *c* release and apoptosis (Guicciardi *et al.*, 2005). In addition, the proteasome inhibitor bortezomid induces CB release from lysosomes, activation of caspase-2 and cell death (Guicciardi *et al.*, 2005). Caspase-2 activation is blocked when CB is inhibited, suggesting that CB release occurs upstream of caspase-2. Moreover, Z-VDVAD-FMK (a chemical inhibitor of caspase-2) or depletion of caspase-2 with an siRNA attenuated MOMP. Thus, caspase-2 emerges as a new link between lysosomal and mitochondrial permeabilization (Yeung *et al.*, 2006). It remains to be determined in which specific circumstances Bid and caspase-2 play predominant roles in mediating post-LMP events such as MOMP.

Cathepsin B has been shown to translocate to the nucleus and induce cell death upon exposure of SHSY-5Y cells to 3-aminopropanal, mouse hepatocytes to TNF- α or rat hepatocytes to glycochenodeoxycholate (Roberts *et al.*, 1997, 2000; Li *et al.*, 2003). There is some evidence that CB can induce direct nuclear damage from studies in which purified CB induces rapid chromatin condensation in isolated HeLa nuclei (Vancompernelle *et al.*, 1998). Interestingly, this effect was abolished when CB was preincubated with 2 μ M zVAD-fmk, a concentration at which only caspase activity is inhibited. Thus, the proapoptotic effect of CB may depend on secondary caspase activity.

The most common cathepsins implicated in cell death are CB and CD, although CL can also induce caspase-3 activation (Ishisaka *et al.*, 1999; Hishita *et al.*, 2001). In addition, CL has an important function in the cell death associated with the involution of the mammary gland after weaning, as CL inhibitors reduce cell death in this system (Burke *et al.*, 2003). Cathepsin G is normally expressed in macrophages and other myeloid cells, and it has been implicated in the antibacterial effect of polymorphonuclear leukocytes. Cathepsin G staining becomes diffuse during ultraviolet light-induced apoptosis of leukemia cells, and cathepsin G may be

implicated in the proteolytic degradation of the Hbrm protein, which is implicated in chromatin remodeling (Biggs *et al.*, 2001). Chymotrypsin B is a digestive protease secreted by the exocrine pancreas that has recently been implicated in apoptotic cell death of hepatocytes treated with TNF- α . Chymotrypsin B translocates from lysosomes to the cytosol and induces a mitochondrial pathway of apoptosis that is significantly blocked by RNA interference of chymotrypsin B or by pretreatment with the chymotrypsin B inhibitor, *N-p*-tosyl-L-phenylalanine chloromethyl ketone. These results demonstrate that chymotrypsin B can function as a proapoptotic protease in the LMP-initiated cell death pathway (Miao *et al.*, 2008).

As previously stated, many factors can influence cell fate during LMP-induced apoptosis, including cell type, the intensity of the cell death stimulus, the state of cellular transformation, the amount of endogenous antioxidants and the levels of endogenous cathepsin inhibitors. In addition, in a given experimental system, very similar compounds may trigger multiple signaling pathways that lead to cell death. For example, ultraviolet C irradiation of HeLa cells treated with two very similar fluoroquinolone antibiotics, norfloxacin and ciprofloxacin, converts cell death from an ROS-dependent, caspase-independent pathway to an ROS-independent, caspase-dependent pathway (Boya *et al.*, 2003a).

LMP in cancer cells

Cathepsins are often upregulated in human cancers and their high levels of expression have been correlated with an increased risk of relapse and poor prognosis (Gyrd-Hansen *et al.*, 2004; Palermo and Joyce, 2008). Cathepsins contribute to distinct tumorigenic processes such as angiogenesis, metastasis and invasion, and these functions are attributed to the extracellular actions of cathepsins once they have been released from secretory lysosomes (Palermo and Joyce, 2008). Thus, cathepsins participate in the degradation of basement membranes and extracellular matrix, thereby facilitating tumor invasion and metastasis (Tardy *et al.*, 2006). Interestingly, each cathepsin participates in a different process during tumorigenesis, as revealed by specific cathepsin knockout mice (Vasiljeva and Turk, 2008). In addition to these extracellular effects of cathepsins in matrix remodeling, intracellular lysosome-dependent degradation also has an important function in tumorigenesis, as suggested by the observation that collagen degradation can be blocked by means of specific intracellular cathepsin inhibitors (Sameni *et al.*, 2000). In addition to these tumor-promoting effects of cathepsins, evidence is emerging that proteases, and in particular cathepsins, may have a function as tumor suppressors as well (Lopez-Otin and Matrisian, 2007).

During cellular transformation, cancer cells undergo profound changes in their lysosomal compartment, which affect their size, intracellular localization, cathepsin expression and enzymatic activity. Immortalization and transformation have been shown to increase the

susceptibility of mouse embryonic fibroblasts to lysosome-dependent cell death induced by anticancer agents (Fehrenbacher *et al.*, 2004). This effect is mediated through CB overexpression and increased cathepsin-dependent cell death. Lysosomal maturation, size and activity are tightly regulated by phosphatidylinositol-3 kinase (PI3K) (Mousavi *et al.*, 2003), an enzyme that is activated in many cancers. Inhibition of PI3K induces the translocation of CB to the cytosol and may sensitize endothelial cells to TNF- α -induced apoptosis (Madge *et al.*, 2003; Li and Pober, 2005). Hsp70 may promote tumorigenesis by stabilizing lysosomal membranes and by protecting cells against LMP induced by hypoxia, non-inflammatory cytokines, oxidative stress, irradiation or anticancer drugs (Rohde *et al.*, 2005). The reasons for the increased susceptibility of cancer cell lysosomes to LMP are not understood. As one possibility, relatively large lysosomes, as found in cancer cells (Glunde *et al.*, 2003), may be more fragile than normal-sized lysosomes (Ono *et al.*, 2003). Moreover, cancer cells exhibit higher metabolic rates and an increased turnover of iron-containing proteins, leading to the lysosomal accumulation of iron, with consequent iron-mediated sensitization to ROS-induced LMP (Eaton and Qian, 2002). Cancer cells often produce elevated ROS levels, and the associated higher rate of spontaneous cathepsin release from lysosomes may facilitate cell death induction (Gyrd-Hansen *et al.*, 2004). On theoretical grounds, all these factors render lysosomes from cancer cells particularly susceptible to the therapeutic induction of LMP. However, this speculation awaits experimental verification.

Recently, parvoviruses have been shown to induce the death of glioma cells by inducing LMP with consequent accumulation of CB and CL in the cytosol, while reducing the intracellular levels of cystatins B and C. In addition, intracerebral injection of H1-parvovirus induced tumor regression in a rat glioma model, which was associated with increased CB activity (Di Piazza *et al.*, 2007). These results provide circumstantial evidence that LMP may represent a new therapeutic strategy for the treatment of brain tumors.

Cancer cells often exhibit a reduced expression of proapoptotic signaling or effector molecules and/or overexpress antiapoptotic proteins. The discovery of alternative non-apoptotic cell death pathways might stimulate the development of novel therapeutic strategies (Fehrenbacher and Jaattela, 2005). In this regard, new therapeutic approaches to treat cancer through lysosomal destabilization are emerging and several experimental anticancer agents developed by the NIH seem to kill cells through p53-independent LMP (Erdal *et al.*, 2005). Indeed, the lysosomotropic detergent siramesine has an antitumorigenic effect *in vivo* in mouse models of fibrosarcoma and breast cancer when administered concomitantly with tumor induction (Ostenfeld *et al.*, 2005).

Photodynamic therapy combines a drug (a photosensitizing agent) with a specific wavelength of light to induce the generation of ROS that kill cancer cells (Buytaert *et al.*, 2007). The subcellular localization of

the photosensitizer is of special importance, as it determines the localization of the primary damage. Many photosensitizers accumulate in mitochondria or lysosomes. Whereas photosensitizers that accumulate in mitochondria tend to induce rapid apoptosis, photosensitizers that enrich in lysosomes may induce either apoptosis or necrosis (Moor, 2000). Photodynamic therapy with photosensitizers that accumulate inside lysosomes may induce cell death dependent on LMP and cathepsins (Buytaert *et al.*, 2007), as has been shown for ATX-s10 and *N*-aspartyl chlorin e6 (Caruso *et al.*, 2004; Ichinose *et al.*, 2006). In addition, antiapoptotic members of the Bcl-2 family of proteins are often degraded after photodynamic therapy, making cells more sensitive to apoptotic cell death (Xue *et al.*, 2003; Ichinose *et al.*, 2006).

LMP during development and aging or other diseases

The role of LMP-dependent cell death has not been extensively investigated in mammalian organogenesis. CD appears to be overexpressed in areas of prominent cell death during limb development such as in the interdigital areas (Zuzarte-Luis *et al.*, 2007b). Similar observations have been reported in heart development (Zuzarte-Luis *et al.*, 2007a). CD is expressed during insect metamorphosis in a tissue- and developmental stage-specific manner, and CD expression is transcriptionally regulated by the hormone ecdysone. Depletion of CD by RNAi arrests larval-pupal metamorphosis and abolishes DNA fragmentation (Gui *et al.*, 2006). The role of cathepsin during insect development may be related to the role of autophagy and lysosome degradation during *Drosophila* metamorphosis, where both autophagy and caspases have prominent functions (Lee *et al.*, 2002). Caspase knockout animals possess supernumerary neurons and the knockout of lysosomal proteases can exacerbate cell death in different tissues and notably in the brain (Boya and de la Rosa, 2005).

The combined deficiency of CB and CL results in early-onset neurodegeneration in mice that is reminiscent of neuronal ceroid lipofuscinoses (a hereditary neurodegenerative disease in humans), and cathepsin B^{-/-}/L^{-/-} mice exhibit a major degree of cerebral atrophy (Felbor *et al.*, 2002). This atrophy is due to the massive apoptosis of selected neurons in the cerebral cortex and in the cerebellar Purkinje and granule cell layers. Similarly, central nervous system neurons in CD^{-/-} mice display a new form of lysosome accumulation with a neuropathological phenotype that resembles neuronal ceroid lipofuscinosis (Koike *et al.*, 2000). Batten disease manifests as massive neuronal degeneration with the accumulation of undigested material inside lysosomes. Niemann-Pick type C (NPC) disease is an autosomal recessive disorder caused by mutations of NPC1 and NPC2 genes. The progressive neurodegeneration that accompanies NPC is fatal, and an association has been established between autophagic-lysosomal dysfunction and cholesterol accumulation in

Npc1^{-/-} mice. Brain levels of lysosomal CD were significantly higher in Npc1^{-/-} than in wild-type mice (Stahl *et al.*, 2007).

Relatively few *in vivo* studies have addressed the relationship between lysosomal membrane destabilization and pathogenic cell death. LMP likewise has a major function in hepatic dysfunctions like cholestasis, where glycochenodeoxycholate induces caspase activation, LMP, CB translocation and cell death, whereas CB inactivation attenuates liver injury (Canbay *et al.*, 2003). Moreover, in a dietary murine model of non-alcoholic fatty liver disease, either genetic or pharmacological inactivation of CB protects against the development of hepatic steatosis, liver injury and insulin resistance with its associated 'dysmetabolic syndrome' (Feldstein *et al.*, 2004). In animal models of iron overload, iron-mediated lysosomal instability and enhanced lipid peroxidation occur (Mak and Weglicki, 1985).

Atherosclerosis is an inflammatory disease characterized by extensive remodeling of the extracellular matrix (Liu *et al.*, 2004a). It has recently been reported that atherosclerotic lesions in both humans and mice are associated with the expression of several lysosomal proteases, including cathepsins B, D, L and S, which may affect plaque development and stability. Oxidized low-density lipoprotein may favor LMP, inducing the death of phagocytic cells, as this has been shown in cultured cells (Li and Yuan, 2004; Liu *et al.*, 2004a). *In vivo* knockout studies revealed that the deficiency of cathepsin K or S attenuates atherosclerosis (Sukhova *et al.*, 2003). Another pathogenic situation in which macrophages have been implicated is lung damage induced by silica exposure. Silica particles enter cells by phagocytosis and their reactive surface may interact with phagolysosomal membranes, thus triggering the translocation of lysosomal enzymes to the cytosol and consequent cell death (Thibodeau *et al.*, 2004).

Conclusion

A plethora of cell death-relevant molecules can operate upstream or downstream of LMP. Although the number of papers dealing with LMP is finite, the regulation of LMP appears rather complex, and the precise sequence of events that trigger LMP or emanate from LMP has not been established. In an apparently confusing fashion, it appears that multiple molecular players can act both upstream and downstream of LMP. This has been reported for caspases, ROS, Bax and Bid. Depending on the stimulus, the cell type and the transformation status, cells may use the same elements to fine-tune lethal signaling. In addition, the same building blocks can control cell death pathways at many different levels, thus further increasing the perplexing complexity of lethal signal transduction cascades.

The exact molecular mechanisms that mediate LMP remain enigmatic. Bcl-2 family members may have similar permeabilizing properties for lysosomal membranes as they have for mitochondrial membranes, but

this has not yet been demonstrated in a convincing fashion in cell-free systems. In this regard, it appears intriguing that apolipoprotein L is structurally and functionally similar to proteins of the Bcl-2 family, insofar that it possesses pore-forming domains and displays the ability to induce apoptosis in several cell types (Vanhollebeke and Pays, 2006). Using a bioinformatics approach, apolipoprotein L6 has been identified as a BH3-only protein, and its MOMP-inducing and cell-killing activities are both lost upon deletion of the BH3 domain (Liu *et al.*, 2005). Whether apolipoprotein can induce LMP-dependent cell death is currently unknown. In this context, it appears most intriguing that apolipoprotein L1 is the major serum factor endowed with the capacity of lysing *Trypanosoma cruzi* and that its trypanolytic effect is correlated with its capacity to form pores in the lysosomal membrane of *Trypanosoma* (Perez-Morga *et al.*, 2005). Thus, one of the major challenges for further investigation remains the elucidation of LMP in molecular terms.

For theoretical reasons, it will be of utmost importance to determine which endogenous inhibitors prevent LMP, both in normal and in cancer cells, and which mechanisms mediate the suppression of lysosomal hydrolases in the cytosol, either by inhibiting their enzymatic activity or by targeting them to autophagic or proteasomal destruction. Disinhibiting LMP-dependent death might unleash self-destructive processes in cancer cells, especially if the cancer cells were 'addicted' to such

inhibitors. One example for such endogenous inhibitors of LMP is HSP70, a class of HSP70 for which thus far no specific chemical inhibitors have been developed. Future investigations will clarify whether antagonists of HSP70 or other yet-to-be-discovered LMP inducers may constitute a useful addition to the clinical oncologist's armamentarium.

Abbreviations

AIF, apoptosis-inducing factor; AO, acridine orange; CB, cathepsin B; CD, cathepsin D; CL, cathepsin L; FAN, factor associated with neutral sphingomyelinase activation; LAPF, lysosome-associated protein containing PH and FYVE domains; LMP, lysosomal membrane permeabilization; MOMP, mitochondrial outer membrane permeabilization; PDT, photodynamic therapy; TNF- α , tumor necrosis factor alpha.

Acknowledgements

Research in our labs is supported by grants from Ministry of Science (BFU-2006-00508) and from Fundación La Caixa (BM06-125-1) to PB and Ligue Nationale contre le Cancer (Equipe labellisée), European Commission (Active p53, Apo-Sys, RIGHT, TransDeath, ChemoRes, DeathTrain), Agence Nationale pour la Recherche, Institut National contre le Cancer, Cancéropôle Ile-de-France and Fondation pour la Recherche Médicale to GK. We thank Ana Robles and Nick Joza for editing of the paper.

References

- Abraham MC, Shaham S. (2007). Necrosis and the serpin under't. *Dev Cell* **13**: 464–465.
- Antunes F, Cadenas E, Brunk UT. (2001). Apoptosis induced by exposure to a low steady-state concentration of H₂O₂ is a consequence of lysosomal rupture. *Biochem J* **356**: 549–555.
- Bidere N, Lorenzo HK, Carmona S, Laforge M, Harper F, Dumont C *et al.* (2003). Cathepsin D triggers Bax activation, resulting in selective apoptosis-inducing factor (AIF) relocation in T lymphocytes entering the early commitment phase to apoptosis. *J Biol Chem* **278**: 31401–31411.
- Biggs JR, Yang J, Gullberg U, Muchardt C, Yaniv M, Kraft AS. (2001). The human brm protein is cleaved during apoptosis: the role of cathepsin G. *Proc Natl Acad Sci USA* **98**: 3814–3819.
- Bivik C, Rosdahl I, Ollinger K. (2007). Hsp70 protects against UVB induced apoptosis by preventing release of cathepsins and cytochrome c in human melanocytes. *Carcinogenesis* **28**: 537–544.
- Blomgran R, Zheng L, Stendahl O. (2007). Cathepsin-cleaved Bid promotes apoptosis in human neutrophils via oxidative stress-induced lysosomal membrane permeabilization. *J Leukoc Biol* **81**: 1213–1223.
- Boya P, Andreau K, Poncet D, Zamzami N, Perfettini JL, Metivier D *et al.* (2003a). Lysosomal membrane permeabilization induces cell death in a mitochondrion-dependent fashion. *J Exp Med* **197**: 1323–1334.
- Boya P, Cohen I, Zamzami N, Vieira HLA, Kroemer G. (2002). Endoplasmic reticulum stress-induced cell death requires mitochondrial membrane permeabilization. *Cell Death Differ* **9**: 465–467.
- Boya P, de la Rosa EJ. (2005). Cell death in early neural life. *Birth Defects Res C Embryo Today* **75**: 281–293.
- Boya P, Gonzalez-Polo RA, Casares N, Perfettini J, Dessen P, Larochette N *et al.* (2005). Inhibition of macroautophagy triggers apoptosis. *Mol Cell Biol* **25**: 1025–1040.
- Boya P, Gonzalez-Polo RA, Poncet D, Andreau K, Vieira HL, Roumier T *et al.* (2003b). Mitochondrial membrane permeabilization is a critical step of lysosome-initiated apoptosis induced by hydroxychloroquine. *Oncogene* **22**: 3927–3936.
- Boya P, Pauleau AL, Poncet D, Gonzalez-Polo RA, Zamzami N, Kroemer G. (2004). Viral proteins targeting mitochondria: controlling cell death. *Biochim Biophys Acta* **1659**: 178–189.
- Broker LE, Huisman C, Span SW, Rodriguez JA, Kruyt FA, Giaccone G. (2004). Cathepsin B mediates caspase-independent cell death induced by microtubule stabilizing agents in non-small cell lung cancer cells. *Cancer Res* **64**: 27–30.
- Broker LE, Kruyt FA, Giaccone G. (2005). Cell death independent of caspases: a review. *Clin Cancer Res* **11**: 3155–3162.
- Burke MA, Hutter D, Reshamwala RP, Knepper JE. (2003). Cathepsin L plays an active role in involution of the mouse mammary gland. *Dev Dyn* **227**: 315–322.
- Buytaert E, Dewaele M, Agostinis P. (2007). Molecular effectors of multiple cell death pathways initiated by photodynamic therapy. *Biochim Biophys Acta* **1776**: 86–107.
- Canbay A, Guicciardi ME, Higuchi H, Feldstein A, Bronk SF, Rydzewski R *et al.* (2003). Cathepsin B inactivation attenuates hepatic injury and fibrosis during cholestasis. *J Clin Invest* **112**: 152–159.
- Caruso JA, Mathieu PA, Joiakim A, Leeson B, Kessel D, Sloane BF *et al.* (2004). Differential susceptibilities of murine hepatoma 1c1c7 and Tao cells to the lysosomal photosensitizer NPe6: influence of aryl hydrocarbon receptor on lysosomal fragility and protease contents. *Mol Pharmacol* **65**: 1016–1028.
- Caruso JA, Mathieu PA, Joiakim A, Zhang H, Reiners Jr JJ. (2006). Aryl hydrocarbon receptor modulation of tumor necrosis factor-alpha-induced apoptosis and lysosomal disruption in a hepatoma model that is caspase-8-independent. *J Biol Chem* **281**: 10954–10967.

- Caruso JA, Mathieu PA, Reiners Jr JJ. (2005). Sphingomyelins suppress the targeted disruption of lysosomes/endosomes by the photosensitizer NPe6 during photodynamic therapy. *Biochem J* **392**: 325–334.
- Castino R, Bellio N, Nicotra G, Follo C, Trincerini NF, Isidoro C. (2007). Cathepsin D-Bax death pathway in oxidative stressed neuroblastoma cells. *Free Radic Biol Med* **42**: 1305–1316.
- Chen W, Li N, Chen T, Han Y, Li C, Wang Y *et al.* (2005). The lysosome-associated apoptosis-inducing protein containing the pleckstrin homology (PH) and FYVE domains (LAPF), representative of a novel family of PH and FYVE domain-containing proteins, induces caspase-independent apoptosis via the lysosomal-mitochondrial pathway. *J Biol Chem* **280**: 40985–40995.
- Cheung NS, Peng ZF, Chen MJ, Moore PK, Whiteman M. (2007). Hydrogen sulfide induced neuronal death occurs via glutamate receptor and is associated with calpain activation and lysosomal rupture in mouse primary cortical neurons. *Neuropharmacology* **53**: 505–514.
- Chipuk JE, Kuwana T, Bouchier-Hayes L, Droin NM, Newmeyer DD, Schuler M *et al.* (2004). Direct activation of Bax by p53 mediates mitochondrial membrane permeabilization and apoptosis. *Science* **303**: 1010–1014.
- Cirman T, Oresic K, Mazovec GD, Turk V, Reed JC, Myers RM *et al.* (2004). Selective disruption of lysosomes in HeLa cells triggers apoptosis mediated by cleavage of Bid by multiple papain-like lysosomal cathepsins. *J Biol Chem* **279**: 3578–3587.
- Clarke PG. (1990). Developmental cell death: morphological diversity and multiple mechanisms. *Anat Embryol (Berl)* **181**: 195–213.
- Daugaard M, Kirkegaard-Sorensen T, Ostenfeld MS, Aaboe M, Hoyer-Hansen M, Orntoft TF *et al.* (2007a). Lens epithelium-derived growth factor is an Hsp70-2 regulated guardian of lysosomal stability in human cancer. *Cancer Res* **67**: 2559–2567.
- Daugaard M, Rohde M, Jaattela M. (2007b). The heat shock protein 70 family: highly homologous proteins with overlapping and distinct functions. *FEBS Lett* **581**: 3702–3710.
- de Duve C, de Barsey T, Poole B, Trouet A, Tulkens P, Van Hoof F. (1974). Commentary. Lysosomotropic agents. *Biochem Pharmacol* **23**: 2495–2531.
- de Duve C. (1959). Lysosomes, a new group of cytoplasmic particles. In: Hayashi T (ed). *Subcellular Particles*. Ronald Press Co.: New York.
- De Milito A, Iessi E, Logozzi M, Lozupone F, Spada M, Marino ML *et al.* (2007). Proton pump inhibitors induce apoptosis of human B-cell tumors through a caspase-independent mechanism involving reactive oxygen species. *Cancer Res* **67**: 5408–5417.
- Di Piazza M, Mader C, Geletneký K, Herrero YCM, Weber E, Schlehofer J *et al.* (2007). Cytosolic activation of cathepsins mediates parvovirus H-1-induced killing of cisplatin and TRAIL-resistant glioma cells. *J Virol* **81**: 4186–4198.
- Doulias PT, Christoforidis S, Brunk UT, Galaris D. (2003). Endosomal and lysosomal effects of desferrioxamine: Protection of HeLa cells from hydrogen peroxide-induced DNA damage and induction of cell-cycle arrest. *Free Radic Biol Med* **35**: 719–728.
- Eaton JW, Qian M. (2002). Molecular bases of cellular iron toxicity. *Free Radic Biol Med* **32**: 833–840.
- Emert-Sedlak L, Shangary S, Rabinovitz A, Miranda MB, Delach SM, Johnson DE. (2005). Involvement of cathepsin D in chemotherapy-induced cytochrome c release, caspase activation, and cell death. *Mol Cancer Ther* **4**: 733–742.
- Erdal H, Berndtsson M, Castro J, Brunk U, Shoshan MC, Linder S. (2005). Induction of lysosomal membrane permeabilization by compounds that activate p53-independent apoptosis. *Proc Natl Acad Sci USA* **102**: 192–197.
- Eskelinen EL. (2006). Roles of LAMP-1 and LAMP-2 in lysosome biogenesis and autophagy. *Mol Aspects Med* **27**: 495–502.
- Fehrenbacher N, Gyrd-Hansen M, Poulsen B, Felbor U, Kallunki T, Boes M *et al.* (2004). Sensitization to the lysosomal cell death pathway upon immortalization and transformation. *Cancer Res* **64**: 5301–5310.
- Fehrenbacher N, Jaattela M. (2005). Lysosomes as targets for cancer therapy. *Cancer Res* **65**: 2993–2995.
- Felbor U, Kessler B, Mothes W, Goebel HH, Ploegh HL, Bronson RT *et al.* (2002). Neuronal loss and brain atrophy in mice lacking cathepsins B and L. *Proc Natl Acad Sci USA* **99**: 7883–7888.
- Feldstein AE, Werneburg NW, Canbay A, Guicciardi ME, Bronk SF, Rydzewski R *et al.* (2004). Free fatty acids promote hepatic lipotoxicity by stimulating TNF- α expression via a lysosomal pathway. *Hepatology* **40**: 185–194.
- Feldstein AE, Werneburg NW, Li Z, Bronk SF, Gores GJ. (2006). Bax inhibition protects against free fatty acid-induced lysosomal permeabilization. *Am J Physiol Gastrointest Liver Physiol* **290**: G1339–G1346.
- Feofanov AV, Sharonov GV, Astapova MV, Rodionov DI, Utkin YN, Arseniev AS. (2005). Cancer cell injury by cytotoxins from cobra venom is mediated through lysosomal damage. *Biochem J* **390**: 11–18.
- Ferri KF, Kroemer G. (2001). Organelle-specific initiation of cell death pathways. *Nat Cell Biol* **3**: E255–E263.
- Festjens N, Vanden Berghe T, Vandenabeele P. (2006). Necrosis, a well-orchestrated form of cell demise: signalling cascades, important mediators and concomitant immune response. *Biochim Biophys Acta* **1757**: 1371–1387.
- Firestone RA, Pisano JM, Bailey PJ, Sturm A, Bonney RJ, Wightman P *et al.* (1982). Lysosomotropic agents. 4. Carbobenzyloxycarbonylphenylalanyl, a new protease-sensitive masking group for introduction into cells. *J Med Chem* **25**: 539–544.
- Foghsgaard L, Wissing D, Mauch D, Lademann U, Bastholm L, Boes M *et al.* (2001). Cathepsin B acts as a dominant execution protease in tumor cell apoptosis induced by tumor necrosis factor. *J Cell Biol* **153**: 999–1010.
- Galluzzi L, Maiuri MC, Vitale I, Zischka H, Castedo M, Zitvogel L *et al.* (2007). Cell death modalities: classification and pathophysiological implications. *Cell Death Differ* **14**: 1237–1243.
- Ganapathy V, Daniels T, Casiano CA. (2003). LEDGF/p75: a novel nuclear autoantigen at the crossroads of cell survival and apoptosis. *Autoimmun Rev* **2**: 290–297.
- Garnett TO, Filippova M, Duerksen-Hughes PJ. (2007). Bid is cleaved upstream of caspase-8 activation during TRAIL-mediated apoptosis in human osteosarcoma cells. *Apoptosis* **12**: 1299–1315.
- Garrido C, Brunet M, Didelot C, Zermati Y, Schmitt E, Kroemer G. (2006). Heat shock proteins 27 and 70: anti-apoptotic proteins with tumorigenic properties. *Cell Cycle* **5**: 2592–2601.
- Glunde K, Guggino SE, Solaiyappan M, Pathak AP, Ichikawa Y, Bhujwala ZM. (2003). Extracellular acidification alters lysosomal trafficking in human breast cancer cells. *Neoplasia* **5**: 533–545.
- Golstein P, Kroemer G. (2007). Cell death by necrosis: towards a molecular definition. *Trends Biochem Sci* **32**: 37–43.
- Gonzalez-Polo RA, Boya P, Pauleau AL, Jalil A, Larochette N, Souquere S *et al.* (2005). The apoptosis/autophagy paradox: autophagic vacuolization before apoptotic death. Inhibition of macroautophagy triggers apoptosis. *J Cell Sci* **118**: 3091–3102.
- Groth-Pedersen L, Ostenfeld MS, Hoyer-Hansen M, Nylandsted J, Jaattela M. (2007). Vincristine induces dramatic lysosomal changes and sensitizes cancer cells to lysosome-destabilizing siramesine. *Cancer Res* **67**: 2217–2225.
- Gui ZZ, Lee KS, Kim BY, Choi YS, Wei YD, Choo YM *et al.* (2006). Functional role of aspartic proteinase cathepsin D in insect metamorphosis. *BMC Dev Biol* **6**: 49.
- Guicciardi ME, Bronk SF, Werneburg NW, Gores GJ. (2007). cFLIPL prevents TRAIL-induced apoptosis of hepatocellular carcinoma cells by inhibiting the lysosomal pathway of apoptosis. *Am J Physiol Gastrointest Liver Physiol* **292**: G1337–G1346.
- Guicciardi ME, Bronk SF, Werneburg NW, Yin XM, Gores GJ. (2005). Bid is upstream of lysosome-mediated caspase 2 activation in tumor necrosis factor α -induced hepatocyte apoptosis. *Gastroenterology* **129**: 269–284.
- Guicciardi ME, Deussing J, Miyoshi H, Bronk SF, Svingen PA, Peters C *et al.* (2000). Cathepsin B contributes to TNF- α -mediated

- hepatocyte apoptosis by promoting mitochondrial release of cytochrome c. *J Clin Invest* **106**: 1127–1137.
- Guicciardi ME, Leist M, Gores GJ. (2004). Lysosomes in cell death. *Oncogene* **23**: 2881–2890.
- Gyrd-Hansen M, Farkas T, Fehrenbacher N, Bastholm L, Hoyer-Hansen M, Elling F *et al.* (2006). Apoptosome-independent activation of the lysosomal cell death pathway by caspase-9. *Mol Cell Biol* **26**: 7880–7891.
- Gyrd-Hansen M, Nylandsted J, Jaattela M. (2004). Heat shock protein 70 promotes cancer cell viability by safeguarding lysosomal integrity. *Cell Cycle* **3**: 1484–1485.
- Hamilton Jr RF, Thakur SA, Holian A. (2007). Silica binding and toxicity in alveolar macrophages. *Free Radic Biol Med* **44**: 1246–1258.
- Heinrich M, Neumeyer J, Jakob M, Hallas C, Tchikov V, Winoto-Morbach S *et al.* (2004). Cathepsin D links TNF-induced acid sphingomyelinase to Bid-mediated caspase-9 and -3 activation. *Cell Death Differ* **11**: 550–563.
- Hetz C, Glimcher L. (2008). The daily job of night killers: alternative roles of the BCL-2 family in organelle physiology. *Trends Cell Biol* **18**: 38–44.
- Hishita T, Tada-Oikawa S, Tohyama K, Miura Y, Nishihara T, Tohyama Y *et al.* (2001). Caspase-3 activation by lysosomal enzymes in cytochrome c-independent apoptosis in myelodysplastic syndrome-derived cell line P39. *Cancer Res* **61**: 2878–2884.
- Ichinose S, Usuda J, Hirata T, Inoue T, Ohtani K, Maehara S *et al.* (2006). Lysosomal cathepsin initiates apoptosis, which is regulated by photodamage to Bcl-2 at mitochondria in photodynamic therapy using a novel photosensitizer, ATX-s10 (Na). *Int J Oncol* **29**: 349–355.
- Ishisaka R, Utsumi T, Kanno T, Arita K, Katunuma N, Akiyama J *et al.* (1999). Participation of a cathepsin L-type protease in the activation of caspase-3. *Cell Struct Funct* **24**: 465–470.
- Jones B, Roberts PJ, Faubion WA, Kominami E, Gores GJ. (1998). Cystatin A expression reduces bile salt-induced apoptosis in a rat hepatoma cell line. *Am J Physiol* **275**: G723–G730.
- Kagedal K, Johansson AC, Johansson U, Heimlich G, Roberg K, Wang NS *et al.* (2005). Lysosomal membrane permeabilization during apoptosis— involvement of Bax? *Int J Exp Pathol* **86**: 309–321.
- Kagedal K, Johansson U, Ollinger K. (2001a). The lysosomal protease cathepsin D mediates apoptosis induced by oxidative stress. *FASEB J* **15**: 1592–1594.
- Kagedal K, Zhao M, Svensson I, Brunk UT. (2001b). Sphingosine-induced apoptosis is dependent on lysosomal proteases. *Biochem J* **359**: 335–343.
- Kaznelson DW, Bruun S, Monrad A, Gjerlov S, Birk J, Ropke C *et al.* (2004). Simultaneous human papilloma virus type 16 E7 and cdk inhibitor p21 expression induces apoptosis and cathepsin B activation. *Virology* **320**: 301–312.
- Klionsky DJ. (2007). Autophagy: from phenomenology to molecular understanding in less than a decade. *Nat Rev Mol Cell Biol* **8**: 931–937.
- Koike M, Nakanishi H, Saftig P, Ezaki J, Isahara K, Ohsawa Y *et al.* (2000). Cathepsin D deficiency induces lysosomal storage with ceroid lipofuscin in mouse CNS neurons. *J Neurosci Res* **20**: 6898–6906.
- Kolch W. (2005). Coordinating ERK/MAPK signalling through scaffolds and inhibitors. *Nat Rev Mol Cell Biol* **6**: 827–837.
- Kralova J, Dvorak M, Koc M, Kral V. (2007). p38 MAPK plays an essential role in apoptosis induced by photoactivation of a novel ethylene glycol porphyrin derivative. *Oncogene* **27**: 3010–3020.
- Kroemer G, El-Deiry W, Golstein P, Peter M, Vaux D, Vandenabeele P *et al.* (2005). Classification of cell death: recommendations of the Nomenclature Committee on Cell Death. *Cell Death Differ* **12**(Suppl 2): 1463–1467.
- Kroemer G, Galluzzi L, Brenner C. (2007). Mitochondrial membrane permeabilization in cell death. *Physiol Rev* **87**: 99–163.
- Kroemer G, Jaattela M. (2005). Lysosomes and autophagy in cell death control. *Nat Rev Cancer* **5**: 886–897.
- Kurz T, Gustafsson B, Brunk UT. (2006). Intralysosomal iron chelation protects against oxidative stress-induced cellular damage. *FEBS J* **273**: 3106–3117.
- Kuwana T, Bouchier-Hayes L, Chipuk JE, Bonzon C, Sullivan BA, Green DR *et al.* (2005). BH3 domains of BH3-only proteins differentially regulate Bax-mediated mitochondrial membrane permeabilization both directly and indirectly. *Mol Cell* **17**: 525–535.
- Laforge M, Petit F, Estaquier J, Senik A. (2007). Commitment to apoptosis in CD4(+) T lymphocytes productively infected with human immunodeficiency virus type 1 is initiated by lysosomal membrane permeabilization, itself induced by the isolated expression of the viral protein Nef. *J Virol* **81**: 11426–11440.
- Lamparska-Przybysz M, Gajkowska B, Motyl T. (2006). BID-deficient breast cancer MCF-7 cells as a model for the study of autophagy in cancer therapy. *Autophagy* **2**: 47–48.
- Law RH, Zhang Q, McGowan S, Buckle AM, Silverman GA, Wong W *et al.* (2006). An overview of the serpin superfamily. *Genome Biol* **7**: 216.
- Lee CY, Cooksey BAK, Baehrecke EH. (2002). Steroid regulation of midgut cell death during Drosophila development. *Dev Biol* **250**: 101–111.
- Lee J, Remold HG, Jeong MH, Kornfeld H. (2006). Macrophage apoptosis in response to high intracellular burden of *Mycobacterium tuberculosis* is mediated by a novel caspase-independent pathway. *J Immunol* **176**: 4267–4274.
- Levine B, Kroemer G. (2008). Autophagy in the pathogenesis of disease. *Cell* **132**: 27–42.
- Li JH, Pober JS. (2005). The cathepsin B death pathway contributes to TNF plus IFN-gamma-mediated human endothelial injury. *J Immunol* **175**: 1858–1866.
- Li N, Zheng Y, Chen W, Wang C, Liu X, He W *et al.* (2007). Adaptor protein LAMP recruits phosphorylated p53 to lysosomes and triggers lysosomal destabilization in apoptosis. *Cancer Res* **67**: 11176–11185.
- Li W, Baker NE. (2007). Engulfment is required for cell competition. *Cell* **129**: 1215–1225.
- Li W, Yuan X, Nordgren G, Dalen H, Dubowchik GM, Firestone RA *et al.* (2000). Induction of cell death by the lysosomotropic detergent MSDH. *FEBS Lett* **470**: 35–39.
- Li W, Yuan XM. (2004). Increased expression and translocation of lysosomal cathepsins contribute to macrophage apoptosis in atherosclerosis. *Ann N Y Acad Sci* **1030**: 427–433.
- Li W, Yuan XM, Brunk UT. (1998). OxLDL-induced macrophage cytotoxicity is mediated by lysosomal rupture and modified by intralysosomal redox-active iron. *Free Radic Res* **29**: 389–398.
- Li W, Yuan XM, Ivanova S, Tracey KJ, Eaton JW, Brunk UT. (2003). 3-Aminopropanal, formed during cerebral ischaemia, is a potent lysosomotropic neurotoxin. *Biochem J* **371**: 429–436.
- Link G, Pinson A, Hershko C. (1993). Iron loading of cultured cardiac myocytes modifies sarcolemmal structure and increases lysosomal fragility. *J Lab Clin Med* **121**: 127–134.
- Liu J, Sukhova GK, Sun JS, Xu WH, Libby P, Shi GP. (2004a). Lysosomal cysteine proteases in atherosclerosis. *Arterioscler Thromb Vasc Biol* **24**: 1359–1366.
- Liu N, Phillips T, Zhang M, Wang Y, Opferman JT, Shah R *et al.* (2004b). Serine protease inhibitor 2A is a protective factor for memory T cell development. *Nat Immunol* **5**: 919–926.
- Liu N, Raja SM, Zazzeroni F, Metkar SS, Shah R, Zhang M *et al.* (2003). NF-kappaB protects from the lysosomal pathway of cell death. *EMBO J* **22**: 5313–5322.
- Liu N, Wang Y, Ashton-Rickardt PG. (2004c). Serine protease inhibitor 2A inhibits caspase-independent cell death. *FEBS Lett* **569**: 49–53.
- Liu Z, Lu H, Jiang Z, Pastuszyn A, Hu CA. (2005). Apolipoprotein I6, a novel proapoptotic Bcl-2 homology 3-only protein, induces mitochondria-mediated apoptosis in cancer cells. *Mol Cancer Res* **3**: 21–31.
- Lopez-Otin C, Matrisian LM. (2007). Emerging roles of proteases in tumour suppression. *Nat Rev Cancer* **7**: 800–808.

- Luke CJ, Pak SC, Askew YS, Naviglia TL, Askew DJ, Nobar SM *et al.* (2007). An intracellular serpin regulates necrosis by inhibiting the induction and sequelae of lysosomal injury. *Cell* **130**: 1108–1119.
- Luzio JP, Pryor PR, Bright NA. (2007). Lysosomes: fusion and function. *Nat Rev Mol Cell Biol* **8**: 622–632.
- Madge LA, Li JH, Choi J, Pober JS. (2003). Inhibition of phosphatidylinositol 3-kinase sensitizes vascular endothelial cells to cytokine-initiated cathepsin-dependent apoptosis. *J Biol Chem* **278**: 21295–21306.
- Maiuri MC, Zalckvar E, Kimchi A, Kroemer G. (2007). Self-eating and self-killing: crosstalk between autophagy and apoptosis. *Nat Rev Mol Cell Biol* **8**: 741–752.
- Mak IT, Weglicki WB. (1985). Characterization of iron-mediated peroxidative injury in isolated hepatic lysosomes. *J Clin Invest* **75**: 58–63.
- Malagoli D, Marchesini E, Ottaviani E. (2006). Lysosomes as the target of yessotoxin in invertebrate and vertebrate cell lines. *Toxicol Lett* **167**: 75–83.
- Mannick JB, Schonhoff C, Papeta N, Ghafourifar P, Szibor M, Fang K *et al.* (2001). S-Nitrosylation of mitochondrial caspases. *J Cell Biol* **154**: 1111–1116.
- Marchi B, Burlando B, Moore MN, Viarengo A. (2004). Mercury- and copper-induced lysosomal membrane destabilisation depends on [Ca²⁺]_i dependent phospholipase A2 activation. *Aquat Toxicol* **66**: 197–204.
- Miao Q, Sun Y, Wei T, Zhao X, Zhao K, Yan L *et al.* (2008). Chymotrypsin B cached in rat liver lysosomes and involved in apoptotic regulation through a mitochondrial pathway. *J Biol Chem* **283**: 8218–8228.
- Michallet MC, Saltel F, Flacher M, Revillard JP, Genestier L. (2004). Cathepsin-dependent apoptosis triggered by supraoptimal activation of T lymphocytes: a possible mechanism of high dose tolerance. *J Immunol* **172**: 5405–5414.
- Mihara M, Erster S, Zaika A, Petrenko O, Chittenden T, Pancoska P *et al.* (2003). p53 has a direct apoptogenic role at the mitochondria. *Mol Cell* **11**: 577–590.
- Miller DK, Griffiths E, Lenard J, Firestone RA. (1983). Cell killing by lysosomotropic detergents. *J Cell Biol* **97**: 1841–1851.
- Mizushima N. (2007). Autophagy: process and function. *Genes Dev* **21**: 2861–2873.
- Modjtahedi N, Giordanetto F, Madeo F, Kroemer G. (2006). Apoptosis-inducing factor: vital and lethal. *Trends Cell Biol* **16**: 264–272.
- Mohlig H, Mathieu S, Thon L, Frederiksen MC, Ward DM, Kaplan J *et al.* (2007). The WD repeat protein FAN regulates lysosome size independent from abnormal downregulation/membrane recruitment of protein kinase C. *Exp Cell Res* **313**: 2703–2718.
- Moor AC. (2000). Signaling pathways in cell death and survival after photodynamic therapy. *J Photochem Photobiol B* **57**: 1–13.
- Mousavi SA, Brech A, Berg T, Kjekken R. (2003). Phosphoinositide 3-kinase regulates maturation of lysosomes in rat hepatocytes. *Biochem J* **372**: 861–869.
- Nagaraj NS, Vigneswaran N, Zacharias W. (2006). Cathepsin B mediates TRAIL-induced apoptosis in oral cancer cells. *J Cancer Res Clin Oncol* **132**: 171–183.
- Nylandsted J, Gyrd-Hansen M, Danielewicz A, Fehrenbacher N, Lademann U, Hoyer-Hansen M *et al.* (2004). Heat shock protein 70 promotes cell survival by inhibiting lysosomal membrane permeabilization. *J Exp Med* **200**: 425–435.
- Nylandsted J, Rohde M, Brand K, Bastholm L, Elling F, Jaattela M. (2000). Selective depletion of heat shock protein 70 (Hsp70) activates a tumor-specific death program that is independent of caspases and bypasses Bcl-2. *Proc Natl Acad Sci USA* **97**: 7871–7876.
- Ono K, Kim SO, Han J. (2003). Susceptibility of lysosomes to rupture is a determinant for plasma membrane disruption in tumor necrosis factor alpha-induced cell death. *Mol Cell Biol* **23**: 665–676.
- Ostenfeld MS, Fehrenbacher N, Hoyer-Hansen M, Thomsen C, Farkas T, Jaattela M. (2005). Effective tumor cell death by sigma-2 receptor ligand siramesine involves lysosomal leakage and oxidative stress. *Cancer Res* **65**: 8975–8983.
- Palermo C, Joyce JA. (2008). Cysteine cathepsin proteases as pharmacological targets in cancer. *Trends Pharmacol Sci* **29**: 22–28.
- Paquet C, Sane AT, Beauchemin M, Bertrand R. (2005). Caspase- and mitochondrial dysfunction-dependent mechanisms of lysosomal leakage and cathepsin B activation in DNA damage-induced apoptosis. *Leukemia* **19**: 784–791.
- Paris C, Bertoglio J, Breard J. (2007). Lysosomal and mitochondrial pathways in miltefosine-induced apoptosis in U937 cells. *Apoptosis* **12**: 1257–1267.
- Perez-Morga D, Vanhullebeke B, Paturiaux-Hanocq F, Nolan DP, Lins L, Homble F *et al.* (2005). Apolipoprotein L-I promotes trypanosome lysis by forming pores in lysosomal membranes. *Science* **309**: 469–472.
- Peri P, Hukkanen V, Nuutila K, Saukko P, Abrahamson M, Vuorinen T. (2007). The cysteine protease inhibitors cystatins inhibit herpes simplex virus type 1-induced apoptosis and virus yield in HEP-2 cells. *J Gen Virol* **88**: 2101–2105.
- Riedl SJ, Salvesen GS. (2007). The apoptosome: signalling platform of cell death. *Nat Rev Mol Cell Biol* **8**: 405–413.
- Roberg K, Johansson U, Ollinger K. (1999). Lysosomal release of cathepsin D precedes relocation of cytochrome c and loss of mitochondrial transmembrane potential during apoptosis induced by oxidative stress. *Free Radic Biol Med* **27**: 1228–1237.
- Roberts LR, Kurosawa H, Bronk SF, Fesmier PJ, Agellon LB, Leung WY *et al.* (1997). Cathepsin B contributes to bile salt-induced apoptosis of rat hepatocytes. *Gastroenterology* **113**: 1714–1726.
- Roberts ML, Virdee K, Sampson CPB, Gordon I, Parone P, Tolkovsky AM. (2000). The combination of Bcl-2 expression and NGF-deprivation facilitates the selective destruction of BAD protein in living sympathetic neurons. *Mol Cell Neurosci* **16**: 97–110.
- Rohde M, Daugaard M, Jensen MH, Helin K, Nylandsted J, Jaattela M. (2005). Members of the heat-shock protein 70 family promote cancer cell growth by distinct mechanisms. *Genes Dev* **19**: 570–582.
- Roussi S, Gosse F, Aoude-Werner D, Zhang X, Marchionni E, Geoffroy P *et al.* (2007). Mitochondrial perturbation, oxidative stress and lysosomal destabilization are involved in 7beta-hydroxysterol and 7beta-hydroxycholesterol triggered apoptosis in human colon cancer cells. *Apoptosis* **12**: 87–96.
- Sameni M, Moin K, Sloane BF. (2000). Imaging proteolysis by living human breast cancer cells. *Neoplasia* **2**: 496–504.
- Sandes E, Lodillinsky C, Cwrenbaum R, Arguelles C, Casabe A, Eijan AM. (2007). Cathepsin B is involved in the apoptosis intrinsic pathway induced by Bacillus Calmette-Guerin in transitional cancer cell lines. *Int J Mol Med* **20**: 823–828.
- Silverman GA, Bird PI, Carrell RW, Church FC, Coughlin PB, Gettins PG *et al.* (2001). The serpins are an expanding superfamily of structurally similar but functionally diverse proteins. Evolution, mechanism of inhibition, novel functions, and a revised nomenclature. *J Biol Chem* **276**: 33293–33296.
- Stahl S, Reinders Y, Asan E, Mothes W, Conzelmann E, Sickmann A *et al.* (2007). Proteomic analysis of cathepsin B- and L-deficient mouse brain lysosomes. *Biochim Biophys Acta* **1774**: 1237–1246.
- Sukhova GK, Zhang Y, Pan JH, Wada Y, Yamamoto T, Naito M *et al.* (2003). Deficiency of cathepsin S reduces atherosclerosis in LDL receptor-deficient mice. *J Clin Invest* **111**: 897–906.
- Tardy C, Codogno P, Autefage H, Levade T, Andrieu-Abadie N. (2006). Lysosomes and lysosomal proteins in cancer cell death (new players of an old struggle). *Biochim Biophys Acta* **1765**: 101–125.
- Taylor RC, Cullen SP, Martin SJ. (2008). Apoptosis: controlled demolition at the cellular level. *Nat Rev Mol Cell Biol* **9**: 231–241.
- Terman A, Kurz T, Gustafsson B, Brunk UT. (2006). Lysosomal labilization. *IUBMB Life* **58**: 531–539.
- Thibodeau MS, Gardina C, Knecht DA, Helble J, Hubbard AK. (2004). Silica-induced apoptosis in mouse alveolar macrophages is initiated by lysosomal enzyme activity. *Toxicol Sci* **80**: 34–48.
- Trincheri NF, Nicotra G, Follo C, Castino R, Isidoro C. (2007). Resveratrol induces cell death in colorectal cancer cells by a novel

- pathway involving lysosomal cathepsin D. *Carcinogenesis* **28**: 922–931.
- Turk B, Stoka V. (2007). Protease signalling in cell death: caspases versus cysteine cathepsins. *FEBS Lett* **581**: 2761–2767.
- Turk V, Turk B, Turk D. (2001). Lysosomal cysteine proteases: facts and opportunities. *EMBO J* **20**: 4629–4633.
- Uchimoto T, Nohara H, Kamehara R, Iwamura M, Watanabe N, Kobayashi Y. (1999). Mechanism of apoptosis induced by a lysosomotropic agent, L-Leucyl-L-Leucine methyl ester. *Apoptosis* **4**: 357–362.
- van der Wel N, Hava D, Houben D, Fluitsma D, van Zon M, Pierson J *et al.* (2007). *M. tuberculosis* and *M. leprae* translocate from the phagolysosome to the cytosol in myeloid cells. *Cell* **129**: 1287–1298.
- Vancompernelle K, Van Herreweghe F, Pynaert G, Van de Craen M, De Vos K, Totty N *et al.* (1998). Atractyloside-induced release of cathepsin B, a protease with caspase-processing activity. *FEBS Lett* **438**: 150–158.
- Vanhollebeke B, Pays E. (2006). The function of apolipoproteins L. *Cell Mol Life Sci* **63**: 1937–1944.
- Vasiljeva O, Turk B. (2008). Dual contrasting roles of cysteine cathepsins in cancer progression: apoptosis versus tumour invasion. *Biochimie* **90**: 380–386.
- Ward DM, Griffiths GM, Stinchcombe JC, Kaplan J. (2000). Analysis of the lysosomal storage disease Chediak-Higashi syndrome. *Traffic* **1**: 816–822.
- Welss T, Sun J, Irving JA, Blum R, Smith AI, Whisstock JC *et al.* (2003). Hurlin is a selective inhibitor of lysosomal cathepsin L and protects keratinocytes from ultraviolet-induced apoptosis. *Biochemistry* **42**: 7381–7389.
- Werneburg N, Guicciardi ME, Yin XM, Gores GJ. (2004). TNF- α -mediated lysosomal permeabilization is FAN and caspase 8/Bid dependent. *Am J Physiol Gastrointest Liver Physiol* **287**: G436–G443.
- Werneburg NW, Guicciardi ME, Bronk SF, Gores GJ. (2002). Tumor necrosis factor- α -associated lysosomal permeabilization is cathepsin B dependent. *Am J Physiol Gastrointest Liver Physiol* **283**: G947–G956.
- Werneburg NW, Guicciardi ME, Bronk SF, Kaufmann SH, Gores GJ. (2007). Tumor necrosis factor-related apoptosis-inducing ligand activates a lysosomal pathway of apoptosis that is regulated by Bcl-2 proteins. *J Biol Chem* **282**: 28960–28970.
- Xue LY, Chiu SM, Fiebig A, Andrews DW, Oleinick NL. (2003). Photodamage to multiple Bcl-xL isoforms by photodynamic therapy with the phthalocyanine photosensitizer Pc 4. *Oncogene* **22**: 9197–9204.
- Yacoub A, Park MA, Gupta P, Rahmani M, Zhang G, Hamed H *et al.* (2008). Caspase-, cathepsin-, and PERK-dependent regulation of MDA-7/IL-24-induced cell killing in primary human glioma cells. *Mol Cancer Ther* **7**: 297–313.
- Yan CH, Liang ZQ, Gu ZL, Yang YP, Reid P, Qin ZH. (2006). Contributions of autophagic and apoptotic mechanisms to CrTX-induced death of K562 cells. *Toxicol* **47**: 521–530.
- Yap YW, Whiteman M, Bay BH, Li Y, Sheu FS, Qi RZ *et al.* (2006). Hypochlorous acid induces apoptosis of cultured cortical neurons through activation of calpains and rupture of lysosomes. *J Neurochem* **98**: 1597–1609.
- Yeung BH, Huang DC, Sinicrope FA. (2006). PS-341 (bortezomib) induces lysosomal cathepsin B release and a caspase-2-dependent mitochondrial permeabilization and apoptosis in human pancreatic cancer cells. *J Biol Chem* **281**: 11923–11932.
- Yin L, Stearns R, Gonzalez-Flecha B. (2005). Lysosomal and mitochondrial pathways in H₂O₂-induced apoptosis of alveolar type II cells. *J Cell Biochem* **94**: 433–445.
- Youle RJ, Strasser A. (2008). The BCL-2 protein family: opposing activities that mediate cell death. *Nat Rev Mol Cell Biol* **9**: 47–59.
- Yu ZQ, Wei L, Brunk UT. (2003). 3-aminopropanal is a lysosomotropic aldehyde that causes oxidative stress and apoptosis by rupturing lysosomes. *APMIS* **111**: 643–652.
- Yuan XM, Li W, Brunk UT, Dalen H, Chang YH, Sevanian A. (2000). Lysosomal destabilization during macrophage damage induced by cholesterol oxidation products. *Free Radic Biol Med* **28**: 208–218.
- Yuan XM, Li W, Dalen H, Lotem J, Kama R, Sachs L *et al.* (2002). Lysosomal destabilization in p53-induced apoptosis. *Proc Natl Acad Sci USA* **99**: 6286–6291.
- Zamzami N, El Hamel C, Maise C, Brenner C, Munoz-Pinedo C, Belzacq AS *et al.* (2000). Bid acts on the permeability transition pore complex to induce apoptosis. *Oncogene* **19**: 6342–6350.
- Zang Y, Beard RL, Chandraratna RA, Kang JX. (2001). Evidence of a lysosomal pathway for apoptosis induced by the synthetic retinoid CD437 in human leukemia HL-60 cells. *Cell Death Differ* **8**: 477–485.
- Zhao M, Antunes F, Eaton JW, Brunk UT. (2003). Lysosomal enzymes promote mitochondrial oxidant production, cytochrome c release and apoptosis. *Eur J Biochem* **270**: 3778–3786.
- Zhao M, Brunk UT, Eaton JW. (2001a). Delayed oxidant-induced cell death involves activation of phospholipase A₂. *FEBS Lett* **509**: 399–404.
- Zhao M, Eaton JW, Brunk UT. (2001b). Bcl-2 phosphorylation is required for inhibition of oxidative stress-induced lysosomal leak and ensuing apoptosis. *FEBS Lett* **509**: 405–412.
- Zuzarte-Luis V, Montero JA, Kawakami Y, Izpisua-Belmonte JC, Hurlle JM. (2007a). Lysosomal cathepsins in embryonic programmed cell death. *Dev Biol* **301**: 205–217.
- Zuzarte-Luis V, Montero JA, Torre-Perez N, Garcia-Porrero JA, Hurlle JM. (2007b). Cathepsin D gene expression outlines the areas of physiological cell death during embryonic development. *Dev Dyn* **236**: 880–885.