

LSE

THE LONDON SCHOOL  
OF ECONOMICS AND  
POLITICAL SCIENCE ■

# LSE Research Online

[Valentina Ferretti](#) and [Gilberto Montibeller](#)

## Key challenges and meta-choices in designing and applying multi-criteria spatial decision support systems

**Article (Accepted version)  
(Refereed)**

**Original citation:** Ferretti, Valentina and Montibeller, Gilberto (2016) *Key challenges and meta-choices in designing and applying multi-criteria spatial decision support systems*. [Decision Support Systems](#), 84 . pp. 41-52. ISSN 0167-9236

Reuse of this item is permitted through licensing under the Creative Commons:

© 2016 [Elsevier](#)  
CC BY NC ND

This version available at: <http://eprints.lse.ac.uk/65368/>  
Available in LSE Research Online: July 2016

LSE has developed LSE Research Online so that users may access research output of the School. Copyright © and Moral Rights for the papers on this site are retained by the individual authors and/or other copyright owners. You may freely distribute the URL (<http://eprints.lse.ac.uk>) of the LSE Research Online website.

# Key Challenges and Meta-choices in Designing and Applying Multi-criteria Spatial Decision Support Systems<sup>1</sup>

Valentina Ferretti<sup>a</sup> and Gilberto Montibeller<sup>b</sup>

- a) Department of Management, London School of Economics,  
London WC2A 2AE, United Kingdom, corresponding author  
Email: [v.ferretti@lse.ac.uk](mailto:v.ferretti@lse.ac.uk)
- b) School of Business and Economics, Loughborough University,  
Loughborough LE11 3tU, United Kingdom  
Email: [g.montibeller@lboro.ac.uk](mailto:g.montibeller@lboro.ac.uk)

<sup>1</sup> This research was funded by Dr Gilberto Montibeller's LSE research account (years 2012/13 and 2013/14).

# **Key Challenges and Meta-choices in Designing and Applying Multi-criteria Spatial**

## **Decision Support Systems**

Ferretti, Valentina<sup>a</sup> and Montibeller, Gilberto<sup>b</sup>

<sup>a</sup>Valentina Ferretti, Department of Management, London School of Economics and Political Science. Houghton Street, London, WC2 2AE, UK. Phone: +44 20 7955 6794, E-mail [V.Ferretti@lse.ac.uk](mailto:V.Ferretti@lse.ac.uk)

<sup>b</sup>Gilberto Montibeller, School of Business and Economics, Loughborough University, Loughborough, LE11 3TU, UK. Phone: +441509 223267, Email: [g.montibeller@lboro.ac.uk](mailto:g.montibeller@lboro.ac.uk) (corresponding author)

### **Abstract**

There is an increasing use of Multicriteria-Spatial Decision Support Systems in recent years for dealing with problems that have a spatial distribution of consequences. This growth might be explained by the widespread recognition that there are multiple and conflicting objectives to be considered in spatial planning (e.g. minimizing pollution to air, water and soil, increasing the acceptance of the projects, reducing implementation costs), by new requirements to consider societal values in the evaluation and to increase participation in decision processes, as well as by the crucial role that the spatial dimension plays in such problems. However, we argue in this paper that there are key challenges confronted by DSS designers who are developing such systems and by DSS practitioners who are employing them to support decision making. These challenges impose important meta-choices to designers and practitioners, which may lead to different contents of the evaluation model and to distinctive outcomes of the analysis. In this paper we present and discuss these key challenges and the associated meta-choices. The contribution that we aim to provide to both researchers and practitioners can be summarized as follows: (i) an increased awareness about choices to be made in the design and implementation of these Decision Support Systems; (ii) a better understanding about the available alternatives for each choice, based on recent developments in the literature; and (iii) a clearer appraisal about the inherent trade-offs between advantages and disadvantages of each alternative.

**Key-words:** Multiple criteria analysis; spatial analysis; DSS design; DSS implementation; decision analysis; group decision and negotiation.

## 1 Introduction

Since the 1990s we have seen an increasing use of multi-criteria analysis (MCA) in spatial planning (Malczewski and Ogryczak, 1996) which has, more recently, been extended to Multicriteria-Spatial Decision Support Systems (MC-SDSS; Malczewski, 2006).

Multi-criteria analysis encompasses a set of methodologies (see Belton and Stewart, 2002) that offer a sound rationale for the assessment of different alternatives, for instance urban and regional developments plans, according to multiple, conflicting and often incommensurate dimensions, which are measured via well-specified criteria. One of the strengths of the approach is that it can take into account both qualitative criteria (e.g. specific measurement of impact on the landscape), as well as quantitative ones (e.g. distance to green areas). They overcome some of the shortcomings of traditional economic analysis (e.g. Cost Benefit Analysis), by allowing the explicit inclusion of intangible and non-tradable goods (Gregory et al., 1993) and by modelling the priorities of decision makers and stakeholders.

Recent technological developments in spatial analysis together with the increased awareness of the importance of taking into account the spatial dimension in planning, have led to the extension of traditional multi-criteria analysis to MC-SDSS (Malczewski, 1999). The integration between MCA and Geographic Information Systems (GIS) thus represents an emerging field of research and a very interesting area of application for Decision Support Systems (Coutinho-Rodrigues et al., 2011; Fernandes et al., 2014; Ferretti, 2011; Johnson, 2005).

Over the last twenty years there has been an exponential growth of theoretical and applied research concerning MCA-GIS integration in many domains (Malczewski, 2006). Nevertheless, the field is still very fragmented and, we argue in this paper, there are key challenges confronted by DSS designers and practitioners who are employing, or wish to employ, such methodologies. These challenges impose important meta-choices to analysts, since these choices could lead to different contents of the evaluation model and to distinctive outcomes of the analysis, when designing planning processes adopting MC-SDSS. The time is thus ripe for a formal conceptualization of them and this paper will attempt to lay out these key challenges, as well as the main meta-choices available to cope with them.

Consequently, this article has a dual purpose: (i) to identify and formalize the key challenges involved in the design and implementation of DSSs for spatial multi-criteria evaluation; and (ii) to suggest, for each of them, the meta-choices that analysts and systems designers must make. This may provide to DSS designers and practitioners an increased awareness about choices to be made in spatial planning and decision making processes, a better understanding about the available alternatives for each choice based on recent developments in the literature, and a clearer appraisal about the inherent trade-offs between advantages and disadvantages of each alternative.

This research thus lies in the interface between two disciplines: on one hand MC-SDSS users can benefit from a deeper understanding of the assumptions behind multi-criteria methods and, on the other hand, DSS designers can benefit from an in depth understanding of the intrinsic characteristics of spatial planning processes. This paper is an attempt of bridging this gap.

The remainder of the paper is organized as follows: Section 2 introduces the rationale for the integration between multi-criteria evaluation techniques and spatial analysis tools, as well as the required modelling steps in this kind of analysis. This sets the scene for the subsequent discussion of the key challenges. Section 3 discusses these key challenges for each modelling step and provides guidelines with reference to the available meta-choices. Finally, Section 4 concludes the paper and discusses the opportunities for further research in this field.

## **2 Multicriteria-Spatial Decision Support Systems: setting the scene**

This section presents an overview about MC-SDSS, covering the complexities that call for their use, the rationale for coupling MCA and GIS, as well as the main modelling steps needed to properly develop these integrated models for supporting planning. This section will set the scene for a discussion on the key challenges which follows.

### ***2.1 The need for MC-SDSS***

There are several complexities in spatial planning and decision making that may explain the need for MC-SDSS, from both technical and social perspectives.

Starting from a technical perspective, one of the most relevant complexities is the inherent trade-offs between socio political, environmental, ecological, and economic factors (Keeney, 2013).

Secondly, some of the criteria<sup>1</sup> to be considered in those assessments cannot be easily converted into a monetary value, partly because environmental concerns often involve ethical and moral principles that may not be related to any economic use or value (Kiker et al., 2005), partly because of the difficulties of monetising intangibles (Gregory et al., 1993). Thirdly, as mentioned before, the spatial dimension of both the alternatives and the characteristics of the territory plays a crucial role in spatial planning (Worrall, 1991). Fourthly, the increasing volume of data available to support decision making processes emphasizes the need to develop tractable methods for aggregating the information in a way which is meaningful for planners and decision makers (Kiker et al., 2005). These technical complexities of decision making processes may explain the growing use of MC-SDSS (Malczewski, 2006; Ferretti, 2013) to deal both with the spatial characteristics of the land and with the multiple objectives inherent in such contexts (e.g. minimizing pollution to air, water and soil, increasing the acceptance of the projects, reducing implementation costs).

From a social perspective, there are again several complexities in the context of spatial planning and decision making processes. Firstly, such decision processes often involve many different stakeholders, with different objectives and priorities, thus representing exactly the type of problem that behavioral decision research has shown humans are poorly equipped to solve unaided (Kiker et al., 2005; Payne et al., 1993). Secondly, complex decision problems typically draw on multidisciplinary knowledge bases, incorporating natural and social sciences, as well as medicine, politics, and ethics (Munda, 2005). Thirdly, and associated with the previous complexity, is the tendency of planning issues to involve shared resources and broad constituencies, which means that group decision processes are often necessary (Kiker et al., 2005). However, groups are also susceptible to establish entrenched positions (defeating compromise initiatives) or to prematurely adopt a common perspective that excludes contrary information and suffer from “groupthink” (e.g. Kiker et al., 2005). These social complexities

---

<sup>1</sup> We considered throughout the paper an “objective” as a variable with a direction of preference (e.g. minimize soil pollution) and a “criterion” when this objective is operationalized by an attribute (e.g. particle of contaminant per ton of soil) and normalized by a standardization function.

may explain the increasing adoption of participative decision processes in those contexts and of facilitated decision modelling to support them (Franco and Montibeller, 2010).

Following from these considerations, the use of participative MC-SDSS can handle the spatial complexities involved in planning and decision making processes, as well as the societal priorities and preferences<sup>2</sup> of communities.

## ***2.2 The rationale for MCA-GIS integration***

How the spatial pattern (e.g., location, proximity, clustering) of development affects critical land components is an important aspect of planning and decision-making processes (Ghose, 2007).

The wide availability of GIS provides the technical means to help local and regional planners in better understanding the impacts of development trends, as well as to investigate the interdependencies between the spatial, socio-economic and cultural factors in the decision-making processes. A drawback of GIS is their lack of decision modelling capabilities, which weakens their ability to support decision processes dealing with conflicting objectives (Densham, 1991; Hendriks and Vriens, 2000).

The need to integrate spatial data with algorithmic techniques has thus been recognized and has given rise to a research stream in the context of DSS related to the so-called Spatial Decision Support Systems (SDSS, Spatial Decision Support Knowledge Portal, 2014). As mentioned by Maniezzo et al. (1998), these systems concern the integration of spatially referenced information in a decision-making environment in order to better support planners and decision makers, showing how spatially integrated DSS can be used to bridge the gap between policy makers and complex computerized models (Tsoukiàs et al., 2013). An emerging subset of these tools is MC-SDSS, which combines GIS and MCA.

From a methodological point of view, MC-SDSS provide a collection of methods and tools for transforming and integrating geographic data (criteria maps, as illustrated in Figure 1, left-hand side), as well as decision makers' preferences and priorities, to obtain an overall assessment of the spatial decision alternatives (Figure 1, right-hand side). For example, the overall map might

---

<sup>2</sup> Throughout the paper we refer to “priorities” as meaning value trade-offs, which in most MCDA methods are represented by criteria weights, and to “preferences” as meaning marginal value over impact on a given attribute, which are represented by spatial standardization functions.

be a land use suitability map for hosting a new development project/infrastructure; or a vulnerability map highlighting areas of high impacts, which need specific mitigation and monitoring measures.

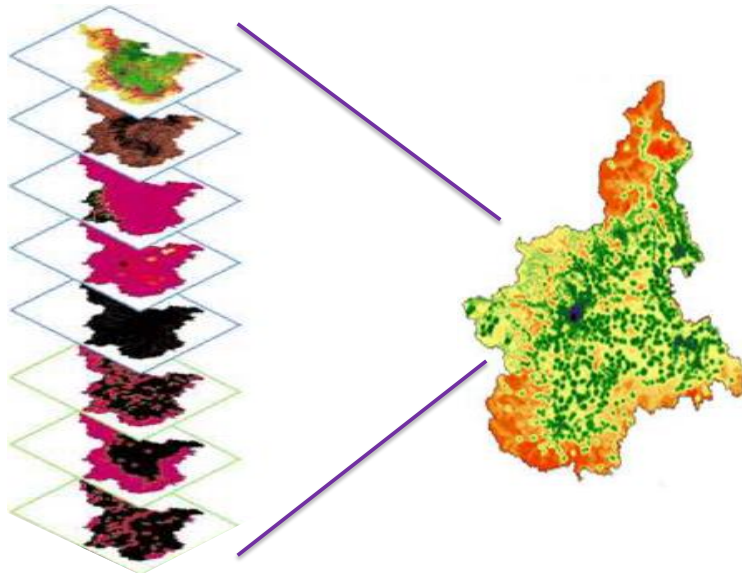


Figure 1. An example of an MC-SDSS output. On the left are the criteria maps and on the right the overall final map (source: Ferretti and Pomarico, 2013).

The main rationale for integrating GIS and MCA is thus that they have unique capabilities that complement each other, enhancing the effectiveness and the efficacy of the planning process (Malczewski, 2006). On one hand, GIS has good capabilities for storing, managing, analyzing and visualizing geospatial data required for planning. On the other hand, MCA offers a rich collection of methodologies for structuring planning problems with conflicting objectives, enabling the design, evaluation and prioritization of decision alternatives (Malczewski, 1999). As already mentioned, the literature now contains many developments and applications of MC-SDSS in a variety of domains (Malczewski, 2006), including territorial and urban development (e.g. Banai, 2005; Ferretti and Comino, 2015; Rinner, 2007), urban infrastructures (e.g. Coutinho-Rodrigues et al., 2011), siting problems (e.g. Fernandes et al., 2014), housing policies (Johnson, 2005), to name a few. How these models are built up is briefly described next.



### ***2.3 Modelling steps in MCA-GIS***

We can divide the process of building an MC-SDSS into five fundamental steps (see Figure 2).

The first step consists in designing the decision-making process, i.e. deciding who should be involved and when, as well as what is the appropriate methodology to be employed. The second step involves structuring the multi-criteria model, by defining a set of fundamental objectives and related spatial criteria, and specifying the options/ alternatives.

The third and fourth steps in the process refer to the elicitation of the spatial standardization functions, i.e. functions that allow to translate the raw performances of each spatial criterion into homogeneous dimensionless values varying from 0 (worst performance and low objective achievement) to 1 (best performance and high objective achievement), and to the aggregation of partial performances into an overall performance, respectively. Both these steps underpin the final overlay of the spatial criteria being considered. Due to the inherent subjectivity that characterizes both steps, which require the elicitation of preferences, it is highly recommended to develop them through a participatory approach with the main stakeholders. Finally, in the last step of the process, where the resulting overall map is analysed, it is always important to perform a sensitivity analysis regarding the key uncertainties associated with the problem (on impacts, standardization functions, and priorities of the decision makers) in order to draw recommendations about the robustness of the solution<sup>3</sup>.

---

<sup>3</sup> For a detailed discussion about robustness in the context of decision aiding see Roy 2013.

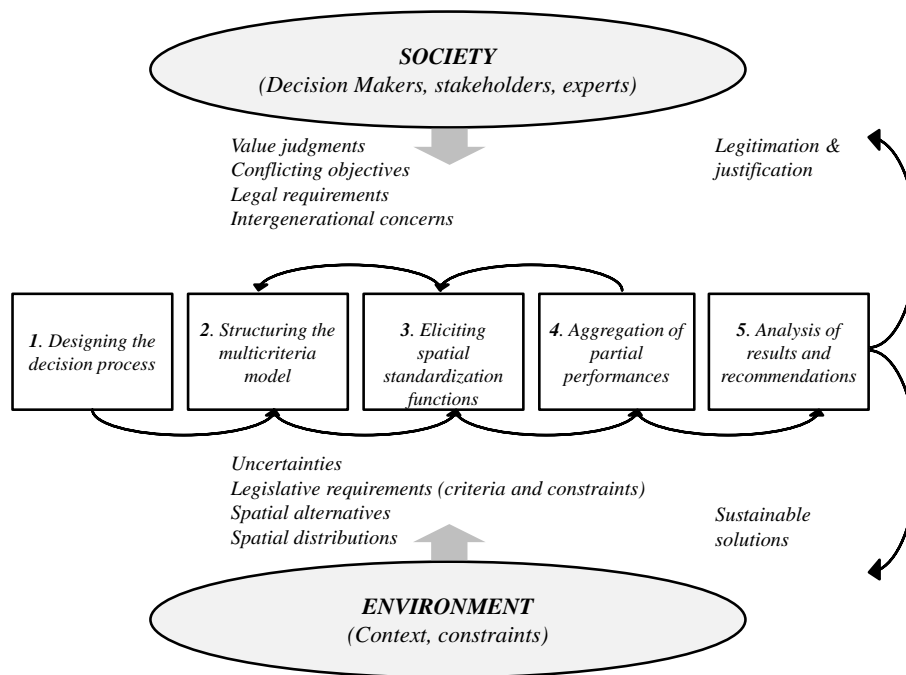


Figure 2 Modelling steps in a socio-environmental context.

As highlighted in Figure 2, the whole process is highly iterative and from each step it is always possible to go back to a previous one, to improve the model and allow learning to take place. While these modelling steps have been presented in slightly different ways in the decision analytic literature (e.g. Keeney, 1982; Belton and Stewart, 2002) our diagram relates these modelling steps to the socio-environmental context where planning processes take place. As the diagram shows, two important sources of inputs in this context are the society (e.g. decision makers, stakeholders, experts) and the environment (i.e. the context and the constraints). The former is where the value judgments, the conflicting objectives, the legal requirements, and the intergenerational concerns come from. The latter is where the uncertainties, the legislative requirements about criteria and constraints, the spatial alternatives, and the spatial distribution of their consequences arise. As a result, the process may feedback to society legitimation for and accountability of the final decision. At the same time it may generate sustainable solutions for the problem, able to take into account the multidimensionality and the interdisciplinary nature of the context. But what are the key challenges confronted by DSS designers and analysts in following those steps in spatial planning and decision making processes? These are discussed in the next section.

### 3 The key challenges in Multicriteria-Spatial Decision Support Systems' design and application

Table 1 summarizes the key challenges in MC-SDSS design and application, for each of the modelling steps introduced in Figure 2. These challenges are based on the relevant literature that we identified in the fields of multi-criteria analysis, planning support systems, and spatial decision support systems, as well as on our experience in conducting multi-criteria assessments in this and in similar contexts. We attempted here to systematically organise the meta-choices that DSS designers need to make when designing this type of interventions and suggest possible alternatives to choose from.

Table 1. Key challenges in MC-SDSS design and application

Steps	Challenges
1. Designing the decision process	<p><b>Challenge 1</b>            (i) who should participate?            (ii) how experts and stakeholders should participate?</p> <p><b>Challenge 2</b>            (i) What is the appropriate MCA method, given the plethora of methods available?            (ii) Get an off-the-shelf method or design a tailor made one?</p>
2. Structuring the MC-SDSS	<p><b>Challenge 3</b>            (i) What sources should we use to define objectives (from experts, public, literature, legislation, etc.)?            (ii) How to make sure that all and only the fundamental objectives are included?</p> <p><b>Challenge 4</b>            How to deal with the limited availability of spatial data for the criteria?</p>
3. Eliciting spatial standardization functions	<p><b>Challenge 5</b>            (i) How to define the appropriate shape of the spatial standardization functions?            (ii) How to elicit standardization functions from experts/public?</p>
4. Aggregation of partial performances	<p><b>Challenge 6</b>            How to deal with sustainability concerns<sup>4</sup> in the evaluation?</p> <p><b>Challenge 7</b>            How to elicit criteria weights from experts/public?</p>
5. Analysis of results and recommendations	<p><b>Challenge 8</b>            How to efficiently perform spatial sensitivity analysis?</p>

<sup>4</sup> i.e. environmental protection and natural resources consumption, such as soil consumption minimization, agriculture productivity, water resources management, and the preservation of biodiversity, to name a few, against other social and economic criteria that need to be maximized.

Each challenge will be discussed in detail in the following paragraphs, considering both the reasons why we identified it as a challenge and the meta-choices that are available for coping with it.

### **3.1 *Challenge 1: Who should participate and how can they participate?***

Stakeholder<sup>5</sup> involvement is increasingly recognized as an essential element of successful environmental decision making (Gregory and Wellman, 2001). An early involvement of stakeholders can help in gathering information about concerns and priorities and contribute to an increased acceptance of the final results (Banville et al., 1998; Franco and Montibeller, 2010). Stakeholder participation is, however, costly and time consuming. In some cases it may even lead to stalling the decision process. Therefore, the two variables we identified for this challenge are: (i) which stakeholder should get involved and (ii) through which process they should be involved.

Regarding the first variable, despite the crucial role that defining the composition of experts and stakeholders panel has, we cannot prescribe a set of discrete alternatives for this challenge. Nevertheless, stakeholder analysis (e.g. power/interest matrices, see Dente, 2014) might help in classifying and selecting them.

Regarding the second variable, i.e. organizing stakeholders' involvement and structuring their inputs to decision making, this task can be accomplished through the use of collaborative decision support systems (Kiker et al., 2005). The meta-choices available for DSS designers confronted with this challenge concern the means of participation to be employed. Two main alternatives are available here to the DSS designer: (i) online participation or (ii) physical participation. The advantage of online participation is the possibility of a wider and asynchronous involvement of both experts and non-experts. Its drawbacks are limited interaction between participants and the analyst, which miss the benefits of facilitated decision modeling (Franco and Montibeller, 2010), such as a facilitator that can debias decision makers' judgments

---

<sup>5</sup> In this paper stakeholders are defined as any actor having a vested interest in the decision process, either directly affecting or being affected by its resolution, including experts and the public. In the literature experts and citizens are however sometimes viewed as separate categories (see e.g. Renn et al., 1993; Keeney, 1988).

(Montibeller and von Winterfeldt, 2015) and the advantages of face-to-face group decision-making (Kerr and Tindale, 2011); as well as dilution of expertise and power among the group, which might make it difficult to reach an agreement and implement the chosen solution (Phillips, 2007). The advantages of physical participation consist, instead, in enabling facilitated modelling and promoting interaction among participants. Its drawbacks are: the limited amount of people that can be involved and, therefore, the need for selection of members. In addition, it is time consuming, which leads to having, often, only experts participating in the modelling process with the exclusion of other relevant stakeholders.

Some possible best practices that could be helpful for dealing with these challenges are: (i) the use of facilitated modelling techniques (Franco and Montibeller, 2010), (ii) the development of stakeholder analysis (e.g. network matrices, power/interest matrices, etc. Dente, 2014; Ackermann and Eden, 2011); and (iii) the use of problem structuring methods to structure and facilitate stakeholders' involvement in the decision processes (Franco and Montibeller, 2011), which has been shown to increase the quality of decisions (Beierle, 2002).

Some real examples from the authors' experience can offer further insights into the process of identifying the key challenges and shaping the meta-choices, and will be mentioned throughout the paper. For instance, one of us has indeed been recently involved in two projects facing Challenge 1 described above. The first project consisted in a multi-attribute location problem for a new parking area inside a UNESCO site (Ferretti, 2015). In this case, the participation-related challenge was faced by developing a stakeholder analysis with a power/interest matrix, which supported the identification of objectives and criteria to be later used in the decision making model. Physical participation was selected, given that only key stakeholders were involved, thus leading to a limited and manageable number of participants. In the second project, which relates to the use of a collaborative multi-criteria analysis approach for supporting the development of the new land use plan of a municipality in Italy (Bottero et al., 2014), the team used a combination of both online and physical participation for the following reasons: (i) about 90 participants were involved in the process since the very beginning of the planning procedure (including citizens and associations, Environmental Authorities, private companies and practitioners); (ii) the participatory process consisted in several public meetings and debates and

in the construction of a web site through which it was possible to share documents, materials and opinions about the ongoing planning process, and (iii) given the strategic and experimental nature of the project, participatory procedures were planned since the very beginning of the project, i.e. from the identification of the objectives and desired actions to be included in the land use plan, to their prioritization and realization.

### **3.2 Challenge 2: What is the appropriate MCA method?**

There are many different MCA methods, and a detailed analysis of their theoretical foundations is beyond the scope of this paper (see Belton and Stewart, 2002 for an overview). Each method has strengths and weaknesses: while some methods are grounded on normative decision theory, others, such as the outranking methods, have more descriptive validity in representing complex preferences and implementing non-traditional aggregation rules. There are also differences in the types of preferences that are elicited by different methods and in the elicitation protocols they employ (Belton and Stewart, 2002).

Many of these methods can support spatial evaluations using participative decision-making processes, but none of them can be seen as the “super method” appropriate to all decision-making situations (Guitouni and Martel, 1998). Since the technical choices (typology of the measurement scales, different preference models, different aggregation operators) are not neutral (Tsoukiàs *et al.*, 2013), it is important to select the method best fitted to the decision process under consideration.

Moreover, some intrinsic methodological characteristics of the different approaches play a crucial role in determining their suitability to be integrated with spatial analysis: (i) alternative-based methods, in which the different options are directly compared against each other, easily reach their computational limits in a spatial context as every pixel of the map becomes an alternative (Chakhar and Mousseau, 2008); (ii) there is a need for coherence between the standardization of the maps and the axiomatic foundations of the methods; (iii) there is a limited availability of built-in MCA methods in GIS software; and (iv) there is a need to avoid the black-box effect, by having simplified elicitation protocols and ensuring the transparency of the model.

Choosing among MCA methods is thus an intricate task and there is a strong need for guidelines in the choice of methods, from both the technical and the social point of view. The meta-choices available for DSS designers confronted with this challenge thus concern the process of selection of the method. In particular, the alternatives are: (i) use an off-the-shelf method or (ii) design a tailor made approach, by combining components of different methods. The former option implies that a DSS designer tries to select one method, among all the existing ones, by following a checklist of guiding questions, such as those proposed by Roy and Slowinski (2013) and adapted by us to the spatial planning context, as shown in Table 2. The latter option means designing an evaluation method by carefully integrating components from different methods in a meaningful way. There are inherent risks in such combinations, for instance in the way that different methods conceptualize criteria weights or represent and elicit preferences (Belton and Stewart, 2002). Thus any attempt of combining methods has to make sure that there is theoretical adequacy and logical consistency between the assembling blocks.

A real example in which one of the authors has been involved could help clarify this challenge. In a project concerning the location of a landfill in Italy (Ferretti, 2011), the team had to develop a land suitability analysis in order to identify the most suitable site for the location of this undesirable facility. Given several features of the problem, such as: i) the type of results needed by the Provincial Authority (i.e. the choice of the most compatible site), ii) the existence of many interaction mechanisms between the social, environmental and economic dimensions of the analysis, and iii) the fact that the decision process was taking place during the strategic macro localization phase of the planning process (thus calling for the need to involve different stakeholders and subsequently to have qualitative elicitation protocols and intuitive models), the team decided to use the Analytic Network Process approach (Saaty, 2013), which allows to take interactions among criteria into account, as well as an intuitive approach, and combine it with GIS.

Table 2. Guiding questions for the selection of an MCA method in MC-SDSS design.

Guiding questions	Specific questions	Solutions
1. What kind of results are needed?	<p>a) Is it conducting a suitability analysis (i.e. choice problem, as for instance the generation of possible alternatives where to locate a new landfill)?</p> <p>b) Is it comparing different existing alternatives (i.e. ranking problem, as for instance comparing two different road layouts)?</p> <p>c) Is it assigning each action to one or several categories which have been defined <i>a priori</i> (i.e. sorting problem, as for instance risk categories or vulnerability categories identification)?</p>	<p>a) Use value based methods (e.g. Keeney and Raiffa, 1993)</p> <p>b) Employ outranking/ alternative based methods (e.g. Roy, 1995)</p> <p>c) Adopt category based methods (Zopounidis and Doumpos, 2002 )</p>
2. How to gather inputs from stakeholders?	How are preferences elicited?	<p>a) Use qualitative elicitation protocols (Montibeller and Belton, 2009)</p> <p>b) Employ quantitative elicitation protocols (von Winterfeldt and Edwards, 1988)</p>
3. How to share the outputs of the analysis?	How to aggregate the data and display results?	<p>a) Avoid black box methods, use intuitive methods with an easy to explain logic (Edwards et al., 1988)</p> <p>b) Display results in a user friendly way (e.g. graphical representations, visual use of colours, easy to see changes in the models, Belton and Elder, 1994; Petr et al., 2015)</p> <p>c) Use methods that support conversation and negotiation of different views (Franco and Montibeller, 2010)</p>
4. What are the relevant characteristics of the problem in terms of compensability, uncertainty and interaction?	<p>a) Is the compensation of bad performances on some criteria by good ones on other criteria acceptable or not (e.g. compensation is not acceptable for emissions of pollutants over regulatory levels or for the number of lives lost; compensation is acceptable between the distance from the subway station and the quality of the landscape)?</p> <p>b) Are there uncertainties (about priorities and the factors) that must be taken into account?</p> <p>c) Is it necessary to take into account some forms of preferential interaction among criteria?</p>	<p>a) If compensation is allowed, one can use compensatory aggregation rules (e.g. Keeney and Raiffa, 1993; Saaty, 2013). If compensation is not allowed, one can use non-compensatory aggregation rules (e.g. Roy, 1995).</p> <p>b) Use methods that allow the modelling of non-deterministic impacts (e.g. Keeney and Raiffa, 1993) and enable an easy sensitivity analysis on criteria weights.</p> <p>c) The DSS designer should try to design a criteria set without preferential dependences. If that is impossible, methods that allow more sophisticated aggregation procedures than a weighted sum are required (Roy and Slowinsky, 2013).</p>



### **3.3 Challenge 3: What sources should be used to define objectives and how to make sure that all and only the fundamental objectives are included?**

Effective spatial decision-making requires an explicit structure for coordinating joint considerations of the environmental, ecological, technological, economic, and socio-political objectives relevant to urban and regional planning. This makes the evaluation inherently multi-objective. Integrating this heterogeneous information demands a systematic and understandable framework to organize the objectives and the related criteria that measure their achievement (Kiker et al., 2005).

The meta-choices available for DSS designers confronted with this challenge concern two key variables: (i) the source of provision of the objectives and (ii) the level of objectives being considered in the evaluation.

Regarding the first variable, the alternatives are: (i) public-based sources (e.g. the community and the stakeholders) or (ii) expert-based sources (e.g. experts, literature, legislation, etc.). The advantages of using public-based sources are to maintain procedural justice and to take into account local concerns. Their drawbacks are that they are time intensive and they may lead to the generation of objectives that are essential but outside of the specific decision framing of the evaluation or, on the contrary, that are easily measurable but not fundamental aspects in the evaluation (see Keeney, 1992). The advantages of using expert-based sources are the possibility of taking into account the most well-accepted and up-to-dated scientific evidence, as well as the opportunity to have objectives which reflect the best available knowledge. Their drawbacks are the risks of underestimating local concerns and of fomenting social opposition.

The second variable refers to the level of the considered objectives, whether they are fundamental or means. Means objectives (e.g. minimize the walking distance to the subway station) are easier to measure and so there is the risk that the planner selects those for which there is data, even if they are not connected with fundamental objectives (Keeney, 1992).

The measurement of the level of achievement of each objective in multi-criteria evaluation is done via criteria (Keeney and Gregory, 2005) and, in most spatial applications, this evaluation has to be based on proxy criteria (i.e. they measure the achievement of means objectives). The reason for using proxy criteria is the gap between the information needed and the information

available for spatial decisions. The drawback is that the link between a proxy criterion (for example, pollution concentration) and a more natural one (for example, health effects), which could measure the achievement of a fundamental objective, is often tenuous (Beinat, 1997).

The alternatives regarding this second variable (i.e. the level of the considered objectives) are:

(i) top-down structuring of objectives (i.e. decomposing the overall objective into sub-objectives which are easier to measure) and (ii) bottom-up structuring of objectives (i.e. the definition of objectives based on the attributes that distinguish the alternatives – for details see Buede, 1986).

The advantages of the former are that the structuring of objectives is naturally connected with value-focused thinking (Keeney, 1992) as well as with proactive approaches to designing better alternatives (Keeney, 2013). In addition, it makes sure that there is a hierarchical decomposition structure for the criteria set. The drawbacks are that it requires a more abstract way of thinking, which may make stakeholders struggle to provide objectives when prompted (Bond et al., 2008).

The advantages of bottom-up structuring of objectives are, instead, that it is cognitively an easier approach and it uses a more concrete way of thinking, linked with easily measurable criteria (Buede, 1986). Its main drawbacks are that it may lead to alternative-focused thinking (Keeney, 1992) and to the risk of missing fundamental objectives (Bond et al., 2008).

A real example in which one of the authors has been recently involved may illustrate this challenge. In the previously mentioned project, concerning the selection of the best location for a new parking in a UNESCO site in Italy (Ferretti, 2015), the challenge related to the identification of the relevant objectives was tackled in the following way: the team organized a focus group with the key local stakeholders (i.e. we used public based sources) and employed a participatory and facilitated concept mapping session with them in order to identify the key values and their casual relations and subsequently derive the comprehensive list of relevant objectives and criteria (i.e. bottom up structuring of objectives). This allowed not only to identify all the relevant concerns since the very beginning of the project, but also to stimulate a learning effect and a sense of ownership of the problem at hand.

#### **3.4 Challenge 4: How to deal with the limited availability of spatial data for the criteria?**

The most significant difference between spatial multi-criteria decision analysis and conventional multi-criteria techniques is the explicit presence of a spatial component. MC-SDSS models therefore require data on the geographical locations of alternatives and/or geographical data on

criterion values (Sharifi and Retsios, 2004). The issue is that spatial data are usually not publicly available and, in any case, dispersed among different authorities and public offices.

In this situation, the meta-choices available for DSS designers concern the means of defining the spatial distribution for each criterion whenever spatial data are not available. In particular, the alternatives are: (i) self-build the maps, using the best available evidence and expert judgment or (ii) redesign the model, trying to find proxy criteria for those factors for which it is unfeasible to build a spatial map.

The advantage of self-building the maps, by using the best available evidence, is that key criteria, which reflect fundamental objectives, are considered, even for data not readily available.

The drawbacks are that the elicitation of expert judgement on the spatial distribution of the values may not be feasible, due to the large number of pixels in the map; as well as the behavioural biases affecting expert judgments (see Gilovich et al., 2002; Montibeller and von Winterfeldt, 2015). The advantage, instead, of redesigning the model, by trying to find proxy criteria for those factors for which it is unfeasible to build a spatial map, is that it may enable employing data of better quality. The drawbacks are the need to perform indirect assessments, by using proxy criteria instead of natural ones, and that the achievement of a proxy objective may not fully reflect the achievement of a fundamental one.

Some possible best practices that could be helpful in this context are: (i) the use of distributed spatial data access and infrastructures (Boerboom and Alan, 2012), which enables the development of shared geospatial data, and (ii) the development of properly constructed criteria to measure the fundamental objectives (Keeney and Gregory, 2005).

A real example in which one of us has been recently involved could exemplify this challenge. In a project related to the study of the network of actors involved in the design of a Spatial Decision Support System, aiming at understanding the impact of climate change on forestry (Boerboom and Ferretti, 2014), the team explored the use of distributed spatial data access and infrastructures and its impact on the stability of the network of actors. This meta-choice turned out to have positive effects on the overall design process, as it allowed public authorities and research centers to create an easy to update spatial database, which could be used for asynchronous participatory decision processes, as well as for monitoring purposes.

### 3.5 *Challenge 5: How to elicit spatial standardization functions from experts/public?*

As previously mentioned, spatial standardization functions are an important component of MC-SDSS models. They are required to make criteria maps comparable and thus they translate the original factor maps scores into a common scale, usually ranging from 0 (worst performance and low objective achievement) to 1 (best performance and high objective achievement). Usually the standardization functions adopted in MC-SDSS models are linear, which make an implicit, and often unrealistic, assumption that the value of the marginal impact is indeed linear. Most MCDA methods, for example those based on Outranking relations, lexicographic rules, among others (see Belton and Stewart, 2002), do not require an elicitation of standardization functions, to assess the value over the marginal impact being assessed. On the other hand, Multi-Attribute Value Theory-based methods typically involve an explicit elicitation of such functions, and indeed there is evidence that results are sensitive to their shape (Stewart, 1996).

Eliciting spatial standardization functions demands a significant cognitive effort (Payne et al., 1993) and is inherently subjective. In addition, they should be elicited with proper interviewing protocols, which are psychometrically valid (see von Winterfeldt and Edwards, 1986).

Spatial standardization functions are typically obtained from decision makers who, sometimes, delegate to experts the provision of such parameters. For spatial planning and decision making processes, often these standardization functions are elicited via surveys with the public (e.g. Boroushaki and Malczweski, 2010). Who provides the information, of course, has consequences on the way that the function is structured and assessed (Beinat, 1997).

The meta-choices available for DSS designers confronted with this challenge thus concern two key variables: (i) the type of elicitation protocol to be employed in eliciting spatial standardization functions and (ii) the means of eliciting this type of parameter.

Regarding the first variable, the alternatives are: (i) using a protocol requiring qualitative statements of preferences with a conversion to a quantitative value function or (ii) employing a protocol requiring quantitative statements of preferences. The advantage of using a protocol requiring qualitative statements of preferences (e.g. AHP, Saaty, 2013; MACBETH, Bana e Costa et al. 2002) is the easiness of this approach for non-technical participants. The drawback is

that qualitative-quantitative conversion might be seen as a black box by stakeholders and policy makers. On the other hand, the advantage of using a protocol requiring quantitative statements of preference (for example the bi-section method, see von Winterfeldt and Edwards, 1986) is the use of a direct elicitation procedure, without artificial conversions; while the drawback is that it is cognitively more demanding.

Concerning the second variable (i.e. the means of eliciting standardization functions) there are two alternatives: (i) using a single expert interview or (ii) employing expert group workshops.

The advantage of the former is that it is a faster and less costly process, while the drawback is the risk of missing important value judgment from other experts or stakeholders. Regarding the latter alternative, i.e. employing expert group workshops, the advantage is that it is a more comprehensive involvement, which is likely to provide a better picture of different concerns and values and to allow an exchange of views among experts. Its drawback is the need for either mathematical or behavioral aggregation of the individual preferences (Belton and Pictet, 1997).

Some possible best practices that could be helpful in this context are: (i) using valid psychometric elicitation protocols (von Winterfeldt and Edwards, 1986), (ii) controlling the cognitive burden in those elicitations (Payne et al. 1993 ), (iii) setting up appropriate upper and lower bound limits (Keeney and Gregory, 2005) as they should anchor the criteria weights (Keeney and Raiffa, 1993), (iv) using facilitated workshops for their elicitation (Franco and Montibeller, 2010); and, finally, (v) designing online surveys for the elicitation of standardization functions (e.g. Del Rio Vilas et al., 2013).

A real example in which one of the authors has been recently involved can illustrate this challenge. In a project related to the study of the suitability of a water basin to be requalified as a wetland with important ecosystem services (Comino and Ferretti, 2015), the team faced the challenge of eliciting spatial standardization functions and decided to employ a group workshop with a limited number of key experts in the different fields important for the decision. This enabled the use of a protocol with quantitative statements of preferences, which provided a better picture of the thresholds of appreciation of the different factors, as well as of the warning levels. The limited amount of experts involved (four) allowed them to agree, via facilitated group discussions, on a single shape for each standardization function without requiring subsequent aggregation. Moreover, by using the bisection elicitation protocol (von Winterfeldt

and Edwards, 1986) the experts reported a greater sense of understanding of the characteristics of the decision context under analysis.

### **3.6 Challenge 6: How to deal with sustainability concerns in the evaluation?**

When considering sustainability in MC-SDSS models, the evaluation of different decision alternatives requires the consideration of trade-offs between many objectives (De Bruckera et al., 2013); factors that range from the reduction of soil consumption to the optimization of the use of environmental resources, from the promotion of economic activities to the requalification of downgraded urban areas, from the endorsement of energy efficiency to the rationalization of transport systems.

In this context, it is worth noticing that there are two competing theories about sustainability, which will influence policy makers and the analysis: the weak and the strong sustainability approaches (Daly and Cobb, 1989; Martin, 2015). Weak sustainability assumes that there is perfect substitutability between man-made capital (e.g. monetary capital, labour) and natural capital (e.g. natural resources and ecosystems services), and thus value trade-offs can be made. In contrast, strong sustainability argues that such substitutability should not be allowed, since it may lead to underestimating issues such as intergenerational equity, resource depletion, ecosystem degradation and/or resilience.

Societal values may direct the adoption of an approach, e.g. the widespread use of cost-benefit analysis in environmental decisions in some countries (see Pearce, 1998), in which all the impacts are monetized, might reflect the choice of the weak sustainability paradigm. In addition, the context of the problem may lead to a choice of one of the approaches, for instance in nuclear waste disposal problems (Morton et al., 2009) trade-offs can be made above safety levels when selecting alternative solutions for storage (thus adopting the weak sustainability paradigm) but not below these safety levels (therefore employing the strong sustainability paradigm).

The concept of weak substitutability thus allows compensability among performances on different criteria, i.e., to compensate a disadvantage on one or several criteria, a sufficient advantage on other criteria is required (Keeney, 2002; Roy and Mousseau, 1996). Many multi-criteria methods are compensatory and, as such, they thus support the evaluation process under weak sustainability assumptions. But non-compensatory methods also exist, for those

evaluations that adopt stronger definitions of sustainability (e.g. some outranking methods - see Roy, 1995). In addition, non-compensability may occur in situations in which the decision maker is not willing to compensate for anything at all (e.g. due to taboo trade-offs, Fiske and Tetlock, 1997) linked to societal values as for instance the cost of lives, health issues, environmental damage.

The meta-choices available for DSS designers confronted with the challenge of modelling compensability thus concern the selection and understanding of the sustainability approach. As hinted before, the alternatives here are adopting either: (i) a weak sustainability approach or (ii) a strong sustainability one. The first alternative models the weights as trade-offs, allowing a substantively rational (Simon, 1986) comparison between benefits and costs. The disadvantage of this approach is that it may underestimate environmental consequences, particularly long-term ones. The second alternative (the strong sustainability approach) calls for the use of non-compensatory aggregation rules in a multi-criteria evaluation. The advantage in this case is that it avoids environmental losses when comparing alternatives; while the drawbacks are the use of operators that do not reflect substantive rationality and the risk of over-emphasizing environmental concerns, thus neglecting other consequences and social benefits.

Some possible best practices that could be helpful in this context are: (i) the use of screening criteria to remove unsuitable options, allowing compensation only within acceptable ranges of the criteria (Bana e Costa et al., 2002) and (ii) the inclusion of long-term consequences and inter-generational concerns in the multi-criteria model (e.g. Atherton and French, 1998).

In order to offer further insights into the process of dealing with sustainability concerns, we share one of the authors' recent experiences facing this challenge. In the previously mentioned project dealing with the land suitability analysis to host a new landfill (Ferretti, 2011), the team dealt with sustainability concerns by using a compensatory approach (i.e. the Analytic Network Process, ANP). The fact that the decision process was taking place during the strategic and more flexible planning phase (i.e. the macro-localization phase of undesirable facilities) indeed enabled taking a weak sustainability approach and thus compensating performances on different criteria. It is worth highlighting that specific constraints have been included in the analysis in order to ensure that performances below the regulatory thresholds were considered unsuitable

and thus were excluded from the analysis (e.g. all those areas where the groundwater depth was less than 3 meters from the surface soil, Ferretti, 2011). For these unsuitable areas compensation could not be made. Moreover, by opting for the complex ANP structuring process (i.e. the Benefits, Opportunities, Costs and Risks network) the analysis enabled the inclusion of long-term consequences and inter-generational concerns in the multi-criteria model.

A different approach was pursued in a project dealing instead with the requalification of an abandoned quarry in Northern Italy, in which one of the authors of this paper has been recently involved (Bottero et al., 2015). In this case, a non-compensatory approach was used and an extension of the ELECTRE III method was developed, in order to deal with interactions between pairs of criteria, which is a common feature in environmental decision-making. The reason for adopting a strong sustainability approach in this project was linked to the specific characteristics of the geographical context under analysis: the area was characterized by the presence of an important area of high ecological value at the European level and therefore no compensation was allowed in order to ensure the protection of this valuable resource.

### **3.7 Challenge 7: How to elicit criteria weights from experts/public?**

As mentioned before, MC-SDSS models derive an overall value of the spatial characteristics of the land through overlaying the criterion maps (Figure 1) according to the criteria values and decision maker's preferences. A key modelling step to obtain such overall map, is the weighting of the different factors considered in the analysis<sup>6</sup>. Therefore, besides criteria selection, criteria weights severely influence the results provided by MC-SDSS (Chen et al., 2010).

However, the meaning of weights is different in distinct MCDA methods. While in Multi-Attribute Value Theory (MAVT)- based models (von Winterfeldt and Edwards, 1986) criteria weights are scaling constants denoting value trade-offs, in other methods they assume different conceptualizations, such a measurement of "importance" in the AHP (Saaty, 2013), or majority rules for comparing outranking relations between alternatives in the ELECTRE methods (which use intrinsic weights in combination with veto thresholds – see Roy and Mousseau, 1996).

---

<sup>6</sup> While methods that do not employ weights, resorting on concepts of dominance or practical-dominance, are useful for some multi-criteria problems, the large number of cells that geographical maps can contain (i.e. alternatives in the maps) make them easily reach their computational limits in a spatial context (Chakhar and Mousseau, 2008).



Therefore the meaning of the criteria is closely connected with the method, and it is therefore crucial that their properties are observed by the decision analyst (Belton and Stewart, 2002). The most consolidated approach in spatial MCDA is the use of a weighted sum to aggregate spatial criteria (Malczewski, 2006). One way of operationalizing this is employing MAVT, in which weights should denote value trade-offs made by decision makers and/or stakeholders (Keeney, 2002). In addition, the standard preference conditions required in non-spatial multi-criteria value analysis (von Winterfeldt and Edwards, 1986) must be extended to the spatial domain. For instance, *pairwise spatial preferential independence* requires that value trade-offs between the criterion levels in any pairs of cells in the map do not depend on the criterion levels in the other cells (Simon et al., 2014). This might be hard to check due to the very large number of cells that geographical maps can contain.

In the same way as with standardization functions (see Challenge 5), the elicitation of criteria weights demands a significant cognitive effort from the participants in the analysis (Payne et al., 1993) and is inherently subjective, since it represents the different priorities in considering the multiple criteria. The meta-choices available for DSS designers confronted with this challenge thus concern two key variables: (i) the type of weight elicitation protocol and (ii) the means of eliciting criteria weights.

The alternatives for the first variable are: (i) using a protocol which only requires qualitative statements of preference, with a subsequent conversion to quantitative weights or (ii) using a protocol which only requires quantitative statements of preference. The advantage of using a protocol requiring only qualitative statements of preferences is its easiness for non-technical participants, while the drawback is that the qualitative-quantitative conversion might be perceived as a black-box. The advantage of using, instead, a protocol requiring quantitative statements of preferences is the direct elicitation procedure required, while the drawback is its more cognitively demanding protocol.

Regarding the second variable, i.e. the means of eliciting criteria weights, the alternatives are: (i) online collaborative processes or (ii) stakeholders group workshops. The advantage of the former is a wider and asynchronous participation of both experts and non-experts, while the drawbacks are, as mentioned in Challenge 1, a limited interaction between participants and the

analyst, missing the benefits of facilitated decision modelling (Franco and Montibeller, 2010), as well as a dilution of expertise and power, which might lead to a lack of agreement about the best option and/or commitment to implement the chosen solution (Phillips, 2007). The advantages of the latter are, instead, enabling facilitated modelling interventions and allowing the interaction among participants. In addition, the use of experts and stakeholders panels expands the knowledge basis and may serve to avoid the limited perspective of a single expert. The drawbacks in this case are limited participation levels and the need for selection of members, as well as planning processes that are more time consuming. Indeed, the use of panels has a range of problems associated with it, such as the panel composition, the interaction mode between panel members and, above all, the aggregation of panel responses into a form useful for the decision (Beinat, 1997; Kerr and Tindale, 2011).

Some possible best practices that could be helpful in this context are: (i) using valid psychometric elicitation protocols for weights (von Winterfeldt and Edwards, 1986), (ii) controlling the cognitive burden in the elicitation processes (Payne et al., 1993), (iii) using aggregation operators compatible with the preference dependence among the criteria (Keeney and Raiffa, 1993); (iv) using facilitated workshops for the elicitation of weights (Franco and Montibeller, 2010); and, finally, (v) designing online surveys for their elicitation (e.g. Del Rio Vilas et al., 2013).

A real example in which one of the authors has been recently involved could help clarify this challenge. In the previously mentioned project about the land suitability analysis for the location of a new wetland (Comino and Ferretti, 2015), the team organized a focus group with a limited number of expert participants, which enabled to also elicit criteria weights employing a quantitative elicitation protocol. In particular, we used the swing weights procedure (Beinat, 1997) in a spatial context, which was one of the first experimentations of such protocol in this domain. The lessons that were learned from this experimentation can be summarized as follows: all the experts involved in the process acknowledged the cognitive burden of the elicitation procedure but recognized more awareness of the heterogeneity of the values across the region under analysis and of the effects that this heterogeneity (versus homogeneity) can have on the results of the process.

### 3.8 *Challenge 8: How to efficiently perform spatial sensitivity analysis?*

Enhancing MC-SDSS models with sensitivity analysis is crucial, as it enables a better understanding of the dynamics of spatial change (Chen et al., 2010), and improves the model's transparency. In particular, sensitivity analysis<sup>7</sup> (Saltelli et al., 2000) helps planners, stakeholders and the general public to better understand the consequences of setting up different priorities, varying the shape of standardization functions and considering the uncertainties in the data. This type of analysis also improves communication and helps identifying if more data on certain aspects need to be collected (Geneletti and Van Duren, 2008).

However, sensitivity analysis (on impacts, standardization functions, and priorities of the decision makers) is not a common practice in the field of spatial multi-criteria evaluation (Chen et al., 2010); rather it is still largely absent or rudimentary. This occurs due to the technical complexity of doing this analysis in a spatial context, in comparison with the well-established tools for sensitivity analysis for non-spatial MCDA (see Rios-Insua, 1990), given: (i) the large number of pixels in a map, (ii) the uncertainty range that might be associated to each pixel, which increases the computational time needed for the assessment, and (iii) the lack of pre-built tools in the GIS software (Delgado and Sendra, 2004).

Indeed, Delgado and Sendra (2004) conducted a review on how sensitivity analysis has been implemented in MC-SDSS. They found that little attention had been paid to the evaluation of the final results from these model simulations. In addition, the sensitivity analysis method most frequently used was based on the variation of the criteria weights to test whether different priorities would significantly modify the obtained results. However, according to them, the most critical shortcoming of spatial sensitivity analysis procedures was the lack of insight that sensitivity analysis provided (Chen et al., 2010).

---

<sup>7</sup> Here we confine the discussion to technical aspects of sensitivity analysis related specifically to the spatial dimension of multi-criteria assessments. We recognise, however, that there are also conceptual issues regarding sensitivity analysis in multi-criteria models, for instance how the parameters should be varied (one-by-one or simultaneously), how to define a robust solution (against worst case scenarios or an 'average' performance), and how recommendations should be drawn from the sensitivity analysis (as ranges in which the preferred alternative remains the best or as robust conclusions covering the robustness of all possible alternatives) – for details see Roy (2013) and Rios-Insua (1990).

The meta-choices available for DSS designers confronted with the challenge of efficiently performing spatial sensitivity analysis thus concern the means of representing sensitivity. In particular, the alternatives are: (i) an interactive analysis with the decision makers, with real time visualization of changes in the maps (e.g. using touch screen tables and online tools) or (ii) a back-room analysis and static presentation of a small number of selected scenarios (set of weights). The advantage of the former is the possibility to explore the solution space, which facilitates the understanding of both the results and of the sensitivity analysis itself; while the drawbacks are that it is a time consuming analysis (i.e. longer computational time for real time display of spatial results) for both analysts and decision makers. In addition, there is a need for software development which can enable this type of exploration.

The advantages of the latter (i.e. a back-room sensitivity analysis) are, instead, that there is neither need for software development nor very time consuming presentation and analysis of results to the decision makers; while the drawbacks are that it provides less insights on the robustness of the solutions and less opportunities for group discussions and group learning.

Some possible best practices that could be helpful in this context are: (i) enabling weight sensitivity to be visualized geographically by showing interactively the results with reference to key scenarios and making use of visualization tools (Feick and Hall, 2004), and (ii) designing the collaborative decision process allocating time for discussion breaks and processing time, so an interactive analysis can be done.

A real example, in which one of the authors has been recently involved, can illustrate this challenge. In the previously mentioned project dealing with the land suitability analysis to host a new landfill (Ferretti, 2011), the team faced the sensitivity challenge by developing a back-room analysis and presenting to the participants different scenarios arising from new set of criteria weights, simulating different priorities. This generated more awareness in the participants about the sensitivity of the results and allowed a learning process to take place. In another project, dealing with the development of a land suitability analysis to host ecological corridors (Ferretti and Pomarico, 2013), the decision analysis team used an aggregation rule (i.e. ordered weighted average, OWA) that allowed to generate a wide range of decision alternatives for addressing uncertainty associated with interaction between multiple criteria. Specifically, OWA scenarios

allowed to quantify and analyze the sensitivity of the results as a function of the level of risk taking (i.e., optimistic, pessimistic, and neutral) and to facilitate a better understanding of patterns that emerged from decision alternatives involved in the decision-making process.

Table 3 summarizes the key challenges that we have identified as well as the meta-choices to cope with them.

Table 3. Key challenges and meta-choices in MC-SDSS design and application.

Steps	Challenges	Variables	Meta-choices
1. Designing the decision process	Challenge 1 (i) who should participate? (ii) how experts and stakeholders should participate?	a) Stakeholders' panel composition	a1) selection of stakeholders to compose the panel
		b) The means of participation	b1) online participation b2) physical participation
	Challenge 2 (i) What is the appropriate MCA method, given the plethora of methods available? (ii) Get an off-the-shelf method or design a tailor made one?	The process of selection of the method	(i) use an off-the-shelf method (see Table 2) (ii) design a tailor made approach, by combining components of different methods
2. Structuring the Multi-criteria model	Challenge 3 - What sources should we use to define objectives (from experts, public, literature, legislation, etc.)? - How to make sure that all and only the fundamental objectives are included?	a) the source of provision of the objectives	a1) public-based sources a2) expert-based sources
		b) the level of objectives being considered in the evaluation	b1) top-down structuring of objectives b2) bottom-up structuring of objectives
	Challenge 4 - How to deal with the limited availability of spatial data for the criteria?	The means of defining the spatial distribution for each criterion when spatial data are not available	(i) self-build the maps using the best available evidence and expert judgment (ii) redesign the model, trying to find proxy criteria for those factors for which it is unfeasible to build a spatial map
3. Eliciting spatial standardization functions	Challenge 5 How to elicit spatial standardization functions from experts/public?	a) the type of elicitation protocol to be employed in eliciting spatial standardization functions	a1) use a protocol requiring qualitative statements of preferences with a conversion to a quantitative spatial standardization function a2) employ a protocol requiring quantitative statements of preferences

Steps	Challenges	Variables	Meta-choices
		b) the means of eliciting this type of parameter	b1) use a single expert interview b2) employ expert group workshops
4. Aggregation of partial performances	Challenge 6 How to deal with sustainability concerns in the evaluation?	The selection and understanding of the sustainability approach	i) adopt the weak sustainability approach ii) adopt the strong sustainability one
	Challenge 7 How to elicit criteria weights from experts/public?	a) the type of weight elicitation protocol	a1) use a protocol which only requires qualitative statements of preference with a subsequent conversion to quantitative weights a2) use a protocol which only requires quantitative statements of preference
		b) the means of eliciting criteria weights	b1) online collaborative processes b2) stakeholders group workshops
5. Analysis of results and recommendations	Challenge 8 How to efficiently perform spatial sensitivity analysis?	The means of representing sensitivity	i) an interactive analysis with the decision makers, with real time visualization of changes in the maps ii) a back-room analysis and static presentation of a small number of selected scenarios

#### 4 Conclusions and opportunities for further research

In this paper, we identified a series of challenges that DSS designers and practitioners employing MC-SDSS models have to address. These challenges are based both on the relevant literature that we reviewed and on our experience in supporting complex multi-criteria evaluation processes in regional planning and similar contexts.

This paper provides three main potential contributions to the literature. The first one stems from the identification and discussion of the key challenges in MC-SDSS design and application. The second is, hopefully, an increase in DSS designers' awareness about the meta-choices available to them, which can make the process of choosing alternative designs more deliberative. We believe that using a deliberative approach, in contrast to an informal one as typically done, is important because these meta-choices have an impact on the quality of the planning process, as well as on the results of the analysis. The third contribution is the generation of interdisciplinary insights in two directions: from decision sciences to spatial planning and decision making and, conversely, from spatial analysis to Spatial Decision Support Systems.

We recognize two main limitations to our work. The first one is the relative lack of empirical evidence about the challenges in the relevant literature. We have attempted to address this by drawing on the extensive literature in Decision Sciences, but recognise that other challenges might exist. In addition, we tried here to reach a wider audience and, therefore, a second limitation is that we limited the level of technical explanations about MCA throughout the paper, but attempted to provide the key references for each topic.

We foresee three main directions for further research on this subject. The first one is the generalisation of best practices. A better understanding of spatial multi-criteria evaluation applications could (and should) provide significant insights for future developments of DSS. The second one is a clearer appreciation of the implications of different planning design processes in applying these tools in practice. Further research on spatial multi-criteria evaluations using more systematic observation and analysis, in terms of the meta-choices made and the path dependency of results as a consequence of such choices, will help to develop a theory of practice for this type of application. The third direction is to test the empirical validity of the meta-choices that we suggested here, by means of specific surveys with research and practitioners in spatial multi-criteria evaluations, in terms of their occurrence, frequency, and consequences.

Concluding, we hope this paper helps in further consolidating the use of MC-SDSS in planning and decision making processes and provides a useful framework for further research on analyzing and comparing these processes in practice, as well as for supporting the design of a new generation of participative MC-SDSS.

## References

- Ackermann F, Eden C, 2011, "Strategic Management of Stakeholders: Theory and Practice", *Long Range Planning* **44** (3) 179–196
- Atherton E, French S, 1998, "Valuing the Future: A MADA Example Involving Nuclear Waste Storage" *Journal of Multi-Criteria Decision Analysis* **7** 304–321
- Bana e Costa C A, Correa E C, De Corte J M, Vansnick J C, 2002, "Facilitating bid evaluation in public call for tenders: a socio-technical approach" *Omega* **30**(3) 227-242
- Banai R, 2005, "Land resource sustainability for urban development: Spatial decision support system prototype" *Environmental Management* **36**(2) 282-296
- Banville C, Landry M, Martel J M, Boulaire C, 1998, "A stakeholder approach to MCDA" *Systems Research* **15** 15–32.
- Beierle T C, 2002, "The quality of stakeholder-based decisions" *Risk Analysis* **22**(4) 739–751
- Beinat E, 1997 *Value functions for environmental management* (Kluwer Academic Publishers, Amsterdam)
- Belton V, Elder M D, 1994, "Decision support systems: learning from visual interactive modelling" *Decision support systems* **12**(4) 355-364

- Belton V, Pictet J, 1997, "A framework for group decision using a MCDA model: sharing, aggregating or comparing individual information" *Journal of Decision Systems*, **6** 283-303
- Belton V, Stewart T J, 2002 *Multiple Criteria Decision Analysis: An Integrated Approach* (Kluwer Academic Press, Boston)
- Boerboom L G J, Alan Ö O, 2012, "Implementation, challenges and future directions of integrating services from the GIS and decision science domains: a case of distributed spatial multi-criteria evaluation" *OSGeo Journal* **10** 49–54
- Boerboom L, Ferretti V, 2014, "Actor Network Theory Perspective on a Forestry Decision Support System Design" *Scandinavian Journal of Forest Research* **29** 84-95, DOI: 10.1080/02827581.2014.946960
- Bottero M, Ferretti V, Figueira J, Greco S, Roy B, 2015, "An extension of Electre III for dealing with a multiple criteria environmental problem with interaction effects between criteria" *European Journal of Operational Research* **245**(3) 837-950
- Bottero M, Ferretti V, Mondini G, Pomarico S, 2014, "Enabling public participation in Strategic Environmental Assessment: an application of Multicriteria Analysis" *Strategic Behavior and the Environment* **4** 99-130
- Bond S D, Carlson K A, Keeney R L, 2008, "Generating objectives: Can decision makers articulate what they want?" *Management Science* **54**(1) 56-70.
- Borouhaki S, Malczewski J, 2010, "Measuring consensus for collaborative decision-making: A GIS-based approach" *Computers, Environment and Urban Systems* **34**(4) 322-332
- Buede D M, 1986, "Structuring Value Attributes" *Interfaces* **16**(2) 52–62
- Chakhar S, Mousseau V, 2008, "GIS-based multicriteria spatial modeling generic framework" *International Journal of Geographical Information Science* **22**(11-12)1159-1196
- Chen Y, Yu J, Khan S, 2010, "Spatial sensitivity analysis of multi-criteria weights in GIS-based land suitability evaluation" *Environmental Modeling and Software* **25** 1582-1591
- Comino E, Ferretti V, 2015, *Land suitability analysis for wetland location: a spatial multicriteria approach*, Proceedings of the 27th European Conference on Operational Research (EURO), 12-15 July 2015, Glasgow (UK)
- Coutinho-Rodrigues J, Simao A, Antunes C H, 2011, "A GIS-based multicriteria spatial decision support system for planning urban infrastructures" *Decision Support Systems* **51** 720-726
- Daly H E, Cobb J, 1989, *For the Common Good: Redirecting the Economy toward Community, the Environment, and a Sustainable Future* (Beacon Press, Boston)
- De Bruckera K, Macharis C, Verbekec A, 2013, "Multi-criteria analysis and the resolution of sustainable development dilemmas: A stakeholder management approach" *European Journal of Operational Research* **224**(1) 122–131
- Del Rio Vilas V J, Burgeño A, Montibeller G, Clavijo A, Vigilato M A, Cosivi O, 2013, "Prioritization of capacities for the elimination of dog-mediated human rabies in the Americas: building the framework" *Pathogens and Global Health* **107**(7) 340–345
- Delgado M G, Sendra J B, 2004, "Sensitivity analysis in multicriteria spatial decision-making: a review" *Human and Ecological Risk Assessment* **10** 1173-1187
- Densham P J, 1991, "Spatial decision support systems", in *Geographical Information Systems: Principles and Applications* Eds D J Maguire, M F Goodchild, D W Rhind, (John Wiley and Sons, New York) pp 403-412
- Dente B, 2014, "Understanding policy decisions" SpringerBriefs in Applied Sciences and Technology
- Edwards W, von Winterfeldt D, Moody D L, 1988, "Simplicity in decision analysis: an example and a discussion", in *Decision Making* Eds D E Bell et al., (Cambridge University Press, Cambridge) pp. 443–464.
- Feick R, Hall G B, 2004, "A method for examining the spatial dimension of multicriteria weight sensitivity" *International Journal of Geographical Information Science* **18**(8) 815-840
- Fernandes S, Captivo M E, Climaco J, 2014, "A DSS for bicriteria location problems" *Decision Support Systems* **57** 224-244
- Ferretti V, 2011, "A Multicriteria- Spatial Decision Support System (MC-SDSS) development for siting a landfill in the Province of Torino (Italy)" *Journal of Multi-Criteria Decision Analysis* **18** 231-252



- Ferretti V, 2013, "Spatial multicriteria evaluation to support planning and evaluation procedures: A survey and classification of the literature" *Geingegneria Ambientale e Mineraria* **139**(2) 53-66
- Ferretti V, 2015, "From actors' analysis to value-focused trees for multi-attribute location problems: an integrated approach for policy support" *European Journal of Operation Research* (under review).
- Ferretti V, Comino E, 2015, "An integrated framework to assess complex cultural and natural heritage systems with Multi-Attribute Value Theory" *Journal of Cultural Heritage* <http://dx.doi.org/10.1016/j.culher.2015.01.007>
- Ferretti V, Pomarico S, 2013, "Ecological land suitability analysis through spatial indicators: an application of the Analytic Network Process technique and Ordered Weighted Average approach" *Ecological Indicators* **34** 507-519
- Fiske A P, Tetlock P E, 1997, "Taboo trade-offs: reactions to transactions that transgress the spheres of justice" *Political psychology* **18**(2) 255-297
- Franco A, Montibeller G, 2010, "Facilitated modelling in operational research" *European Journal of Operational Research* **205** 489-500
- Franco L A, Montibeller G, 2011, "Problem Structuring for Multicriteria Decision Analysis Interventions." In *Wiley Encyclopedia of Operations Research and Management Science*, by James J. Cochran, Louis A. Cox, Pinar Keskinocak, Jeffrey P. Kharoufeh, and J. Cole Smith. Hoboken, NJ, USA: John Wiley & Sons, Inc
- Geneletti D, Van Duren I, 2008, "Protected area zoning for conservation and use: A combination of spatial multicriteria and multiobjective evaluation" *Landscape and Urban Planning* **85**(2) 97-110
- Ghose R, 2007, "Politics of scale and networks of association in public participation GIS" *Environment and Planning A* **39** 1961-1980
- Gilovich T, Griffin D W, Kahneman D, 2002 *Heuristics and Biases: The Psychology of Intuitive Judgement* (Cambridge University Press, Cambridge)
- Gregory R, Lichtenstein S, Slovic P, 1993, "Valuing Environmental Resources: A Constructive Approach" *Journal of Risk and Uncertainty* **7** 177-197
- Gregory R, Wellman K, 2001, "Bringing stakeholder values into environmental policy choices: a community-based estuary case study" *Ecological Economics* **39** 37-52
- Guitouni A, Martel J M, 1998, "Tentative guidelines to help choosing an appropriate MCDA method" *European Journal of Operational Research* **109**(2) 501-521
- Hendriks P, Vriens D, 2000, "From geographical information systems to spatial group decision support systems: a complex itinerary" *Geographical and Environmental Modelling* **4**(1) 83-104
- Johnson M P, 2005, "Spatial decision support for assisted housing mobility counselling" *Decision Support Systems* **41** 296-312
- Keeney R L, 1982, "Decision analysis: an overview" *Operations research* **30**(5) 803-838
- Keeney R L, 1988, "Structuring objectives for problems of public interest" *Operations Research* **36** 396-405
- Keeney R L, 1992 *Value-Focused Thinking. A Path to Creative Decision Making* (Harvard University Press, Cambridge)
- Keeney R L, 2002, "Common mistakes in making value trade-offs" *Operations Research INFORMS* **50**(6) 935-945
- Keeney R L, 2013, "Identifying, prioritizing, and using multiple objectives" *EURO Journal on Decision Processes* **1**(1-2) 45-67
- Keeney R L, Gregory R S, 2005, "Selecting attributes to measure the achievement of objectives" *Operations Research* **53**(1) 1-11
- Keeney RL, Raiffa H, 1993 *Decisions with Multiple Objectives: Preferences and Value Trade-offs* (Wiley, New York)
- Kerr N L, Tindale RS, 2011, "Group-based forecasting?: A social psychological analysis" *International Journal of Forecasting* **27**(1)14-40
- Kiker G A, Bridges T S, Varghese A, Seager T P, Linkov I, 2005, "Application of Multicriteria Decision Analysis in Environmental Decision Making" *Integrated Environmental Assessment and Management* **1**(2) 95-108
- Malczewski J, 1999 *GIS and Multicriteria Decision Analysis* (John Wiley and Sons, New York)

- Malczewski J, 2006, "GIS-based multicriteria decision analysis: a survey of the literature" *International Journal of Geographical Information Science* **20**(7) 703–726
- Malczewski J, Ogryczak W, 1996, "The multiple criteria location problem: 2. Preference-based techniques and interactive decision support" *Environment and Planning A* **28** 69–98.
- Maniezzo V, Mendes I, Paruccini M, 1998, "Decision Support for Siting problems" *Decision Support Systems* **23** 273–284
- Martin L, 2015, "Incorporating values into sustainability decision-making" *Journal of Cleaner Production* **105** 146–156
- Montibeller G, Belton V, 2009, "Qualitative operators for reasoning maps: Evaluating multi-criteria options with networks of reasons" *European Journal of Operational Research* **195**(3) 829-840
- Montibeller G, von Winterfeldt D, 2015, "Cognitive and Motivational Biases in Decision and Risk Analysis" *Risk Analysis* DOI: 10.1111/risa.12360
- Morton A, Airoldi M, Philips L D, 2009, "Nuclear Risk Management on Stage: A Decision Analysis Perspective on the UK's Committee on Radioactive Waste Management" *Risk Analysis* **29** (5) 764–779
- Munda G, 2005, "Social multi-criteria evaluation for urban sustainability policies" *Land Use Policy* **23**(1) 86-94
- Payne J W, Bettman J R, Johnson E J, 1993 *The Adaptive Decision Maker* (Cambridge University Press, Cambridge)
- Pearce D, 1998, "Cost benefit analysis and environmental policy" *The Oxford Review of Economic Policy* **14**(4) 84-100
- Petr M, Boerboom L G J, Ray D, van der Veen A, 2015, "New climate change information modifies frames and decisions of decision makers: an exploratory study in forest planning" *Regional Environmental Change*, 10.1007/s10113-015-0827-9
- Phillips L D, 2007 "Decision Conferencing." In *Advances in Decision Analysis: From Foundations to Applications*, edited by Ward Edwards, Ralph F. Miles, and Detlof von Winterfeldt, 375–99. New York, NY: Cambridge University Press.
- Renn O, Webler T, Rakel H, Dienel P, Johnson B, 1993, "Public participation in decision making: a three step procedure" *Policy Sciences* **26** 189 – 214
- Rinner C, 2007, "A geographic visualization approach to multi-criteria evaluation of urban quality of life" *International Journal of Geographical Information Science* **21**(8) 907-919
- Rios-Insua D, 1990. *Sensitivity Analysis in Multi-Objective Decision Making*. (Springer, Berlin)
- Roy B, 1995 *Multicriteria Methodology for Decision Aiding* (Kluwer Academic Publishers, Dordrecht, the Netherlands)
- Roy B, 2013, *Robustness for Operations Research and Decision Aiding*, Wiley Encyclopedia of Operations Research and Management Science.
- Roy B, Mousseau V, 1996, "A theoretical framework for analysing the notion of relative importance of criteria" *Journal of Multi-Criteria Decision Analysis* **5** 145-159
- Roy B, Slowinski R, 2013, "Questions guiding the choice of a multicriteria decision aiding method" *EURO Journal of Decision Process* **1** 69-97
- Saaty T L, 2013, "The modern science of multicriteria decision making and its practical applications: The AHP/ANP approach" *Operations Research* **61**(5) 1101-1118
- Saltelli A, Chan K, Scott M, 2000 *Sensitivity Analysis, Probability and Statistics Series* (John Wiley & Sons, New York)
- Sharifi M A, Retsios V, 2004, "Site selection for waste disposal through spatial multiple criteria decision analysis" *Journal of Telecommunications and Information Technology* **3** 28–38
- Simon H A, 1986, "Rationality in psychology and economics" *Journal of Business* S209-S224
- Simon J, Kirkwood C, Keller LR, 2014. "Decision analysis with geographically varying outcomes: Preference models and illustrative applications". *Operations Research* **62**(1) 182-194
- Spatial Decision Support Knowledge Portal, 2014 <http://www.spatial.redlands.edu/sds/>
- Stewart T J, 1996, "Robustness of Additive Value Function Methods in MCDM" *Journal of Multi-Criteria Decision Analysis* **5**(4) 301–309
- Tsoukiàs A, Montibeller G, Lucertini G, Belton V, 2013, "Policy analytics: an agenda for research and practice" *EURO Journal on Decision Processes* **1** 115-134

- von Winterfeldt D, Edwards W, 1986 *Decision Analysis and Behavioral Research* (Cambridge University Press, Cambridge)
- Worral L, 1991 *Spatial Analysis and Spatial Policy using Geographic Information Systems* (Belhaven Press, London)
- Zopounidis C, Doumpos M, 2002, "Multicriteria classification and sorting methods: A literature review" *European Journal of Operational Research* 138 229–246