

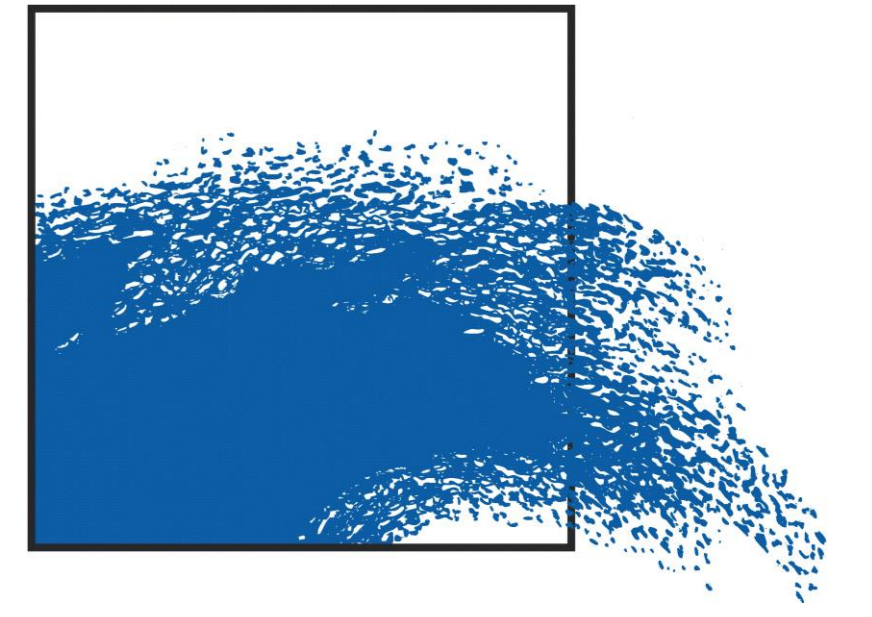
Assessing the environmental impact of offshore wind farms in the Belgian part of the North Sea



Bob Rumes¹, Marisa Di Marcantonio¹ & Brigitte Lauwaert¹

¹ Royal Belgian Institute of Natural Sciences, Management Unit of the North Sea Mathematical Models, Marine. Ecosystem Management Section, Brussels, Belgium

email: Bob.Rumes@mumm.ac.be



Introduction

By 2020, renewable energy sources should account for 13% of the Belgian electricity consumption. Offshore wind farms are expected to contribute to this with ~2000 MW installed capacity in the Belgian part of the North Sea. Here we illustrate how the environmental impact of every different project is assessed in the process of applying for an environmental permit.

Procedure

Before being granted or denied, every project has to pass through an environmental permit procedure, pursuant to the law on the protection of the marine environment (January 20th 1999) and two Royal Decrees.

1. The Royal decree concerning the procedure of permit and authorization of certain activities in the marine areas under jurisdiction of Belgium (September 7th 2003)
2. The Royal decree concerning the rules of the environmental impact assessment (September 9th 2003)

Project developer

1. Develop a new project for an offshore wind farm
2. Apply for a domain concession in the zone designated for the production of electricity from wind, water or currents (Figure 1).

Domain concessions are granted based on various criteria, including expected energy production/km², use of innovative technology, feasibility of the project, added value with regards to competing projects...

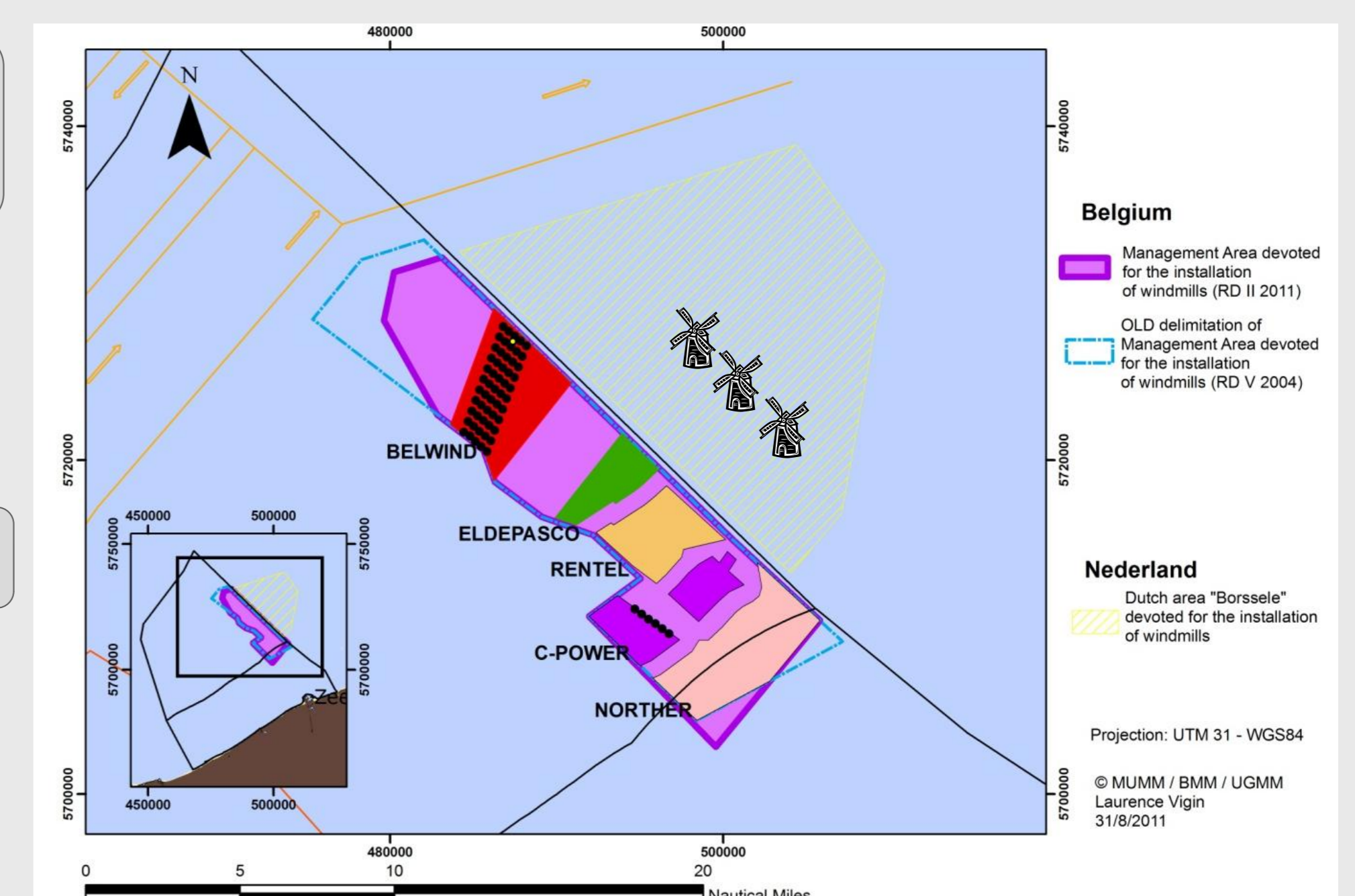
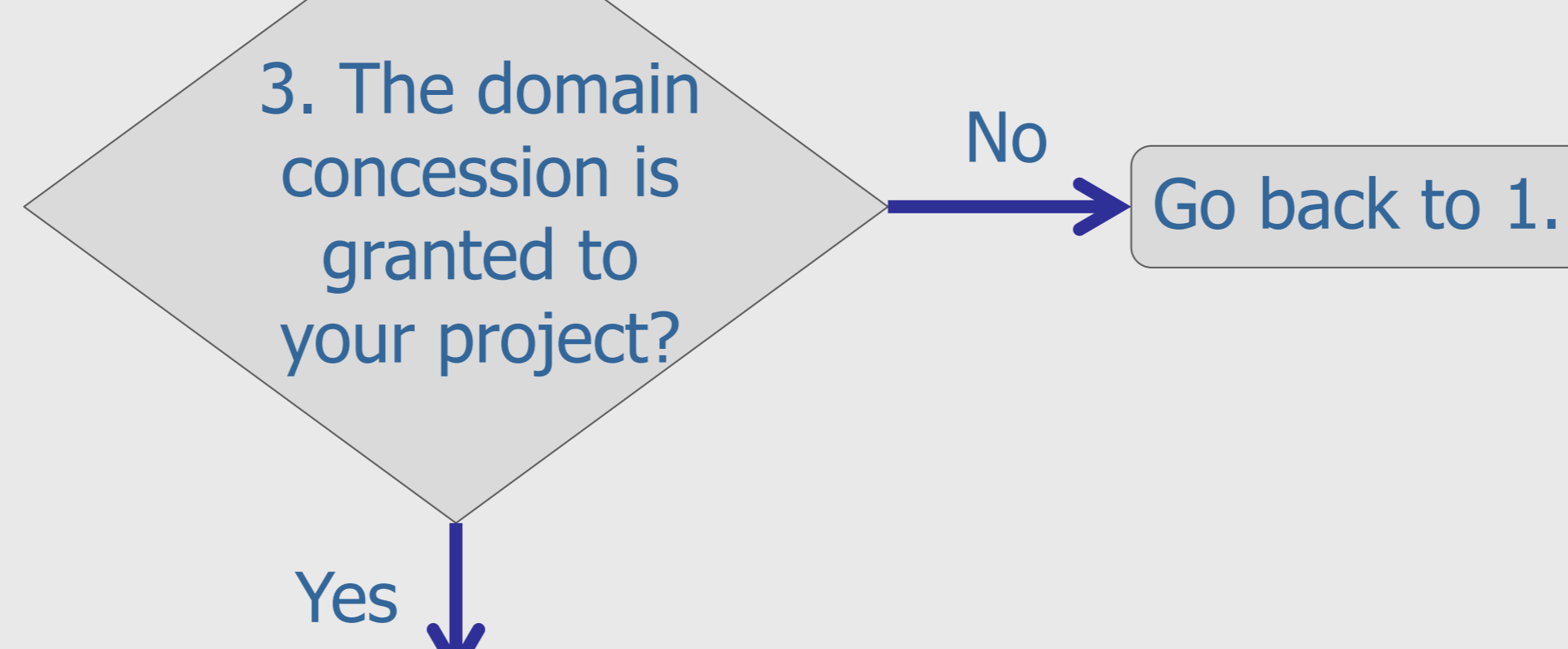
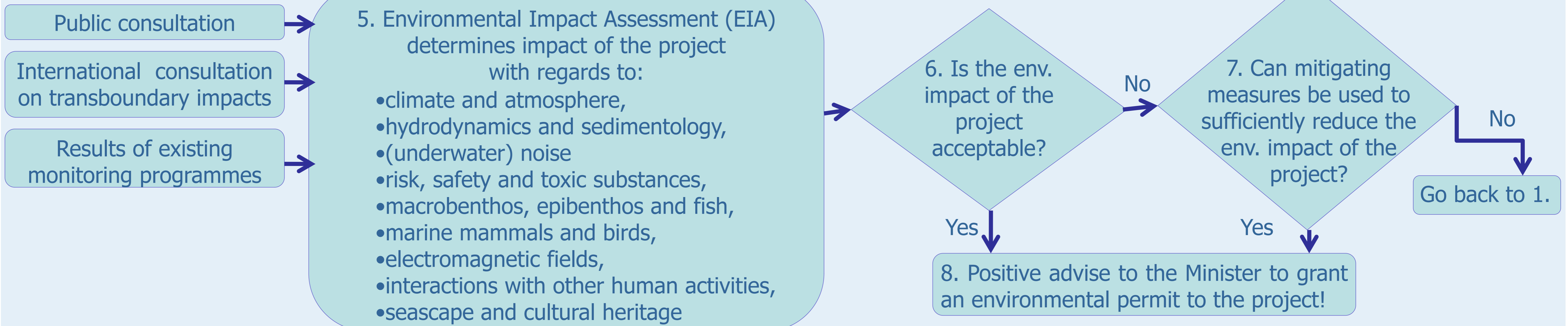


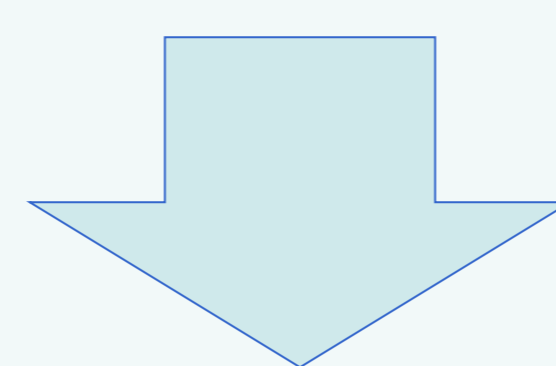
Figure 1. Overview of the domain concessions for offshore wind farms in the Belgian part of the North Sea, with indication of the nearby Dutch zone for offshore wind farms.

MUMM



Results

- Since 2004, four offshore wind farm projects, totaling ~1200 Megawatt installed capacity, have been granted environmental permits
- Site- and Project-specific mitigating measures have been defined for each project
- An integrated monitoring programme has been drafted to:
 1. Determine the extent of the environmental impact of the projects
 2. Evaluate the effectiveness of the mitigating measures
 3. Monitor the compliance of the wind farm projects with the mitigating measures defined in their environmental permit



Resulting in an **adaptive** management of the environmental permit aimed at **reducing the environmental impact of existing and future offshore wind farms.**

