

# Challenges in defining GES for Belgian waters: Marine biodiversity

Jan Haelters  
RBINS/MUMM



MSFD



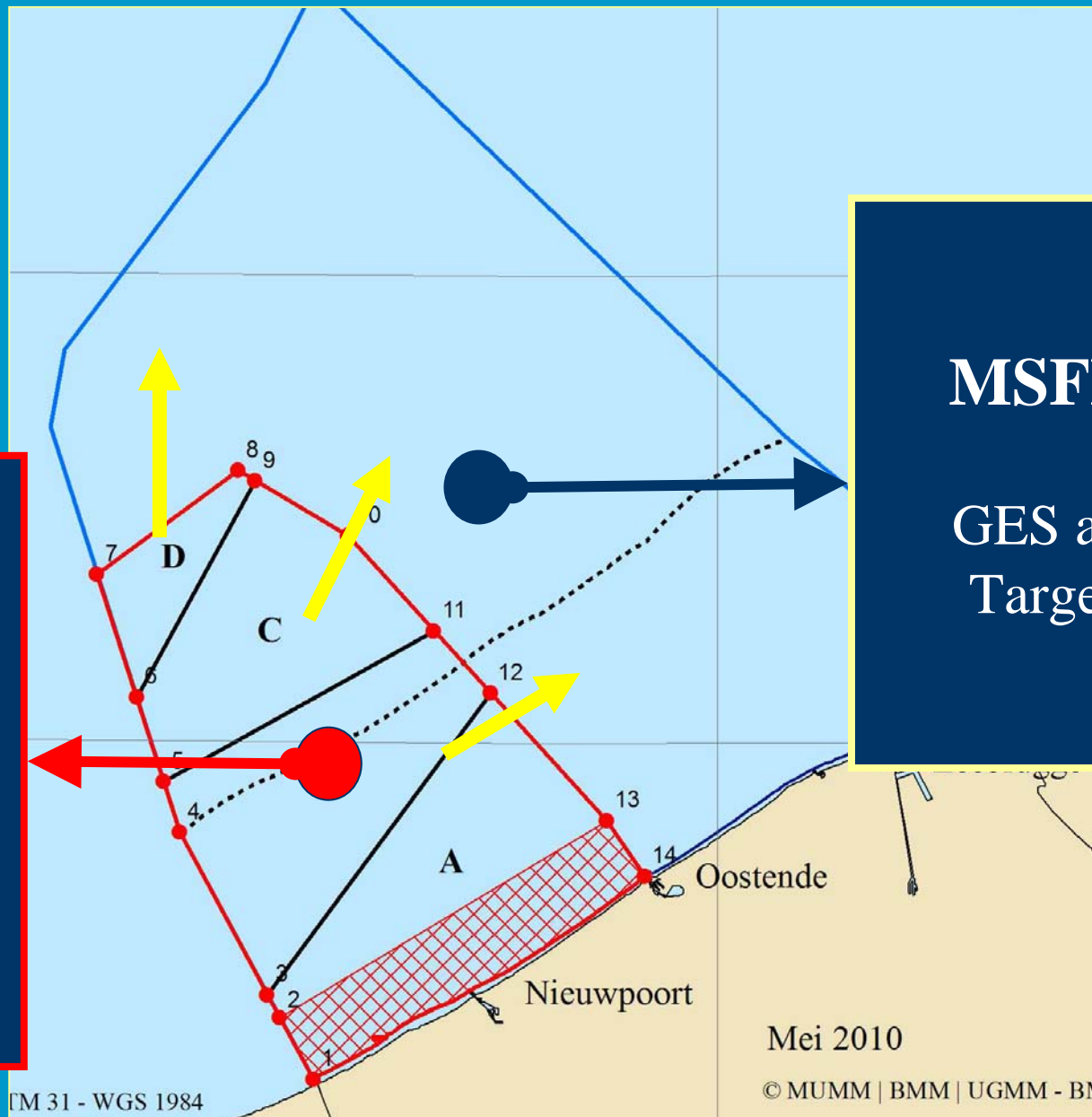
Other environmental  
protection  
commitments  
and obligations



Human  
activities

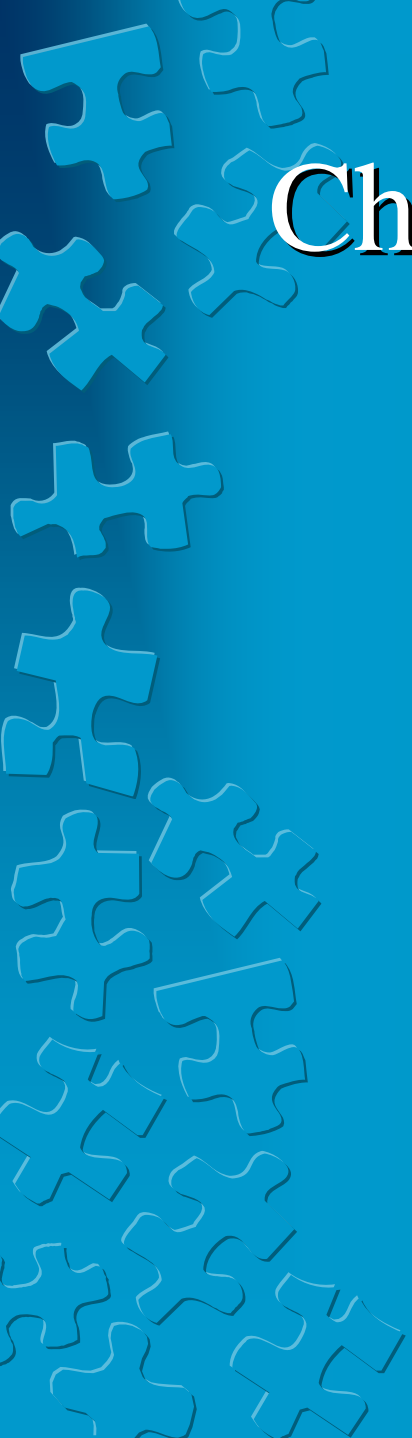
# NATURA 2000

FCS and  
Conservation  
objectives



# MSFD:

GES and  
Targets



# Challenge 1: The integration of commitments and policies

# MSFD

- Flexibility in decisions on implementation

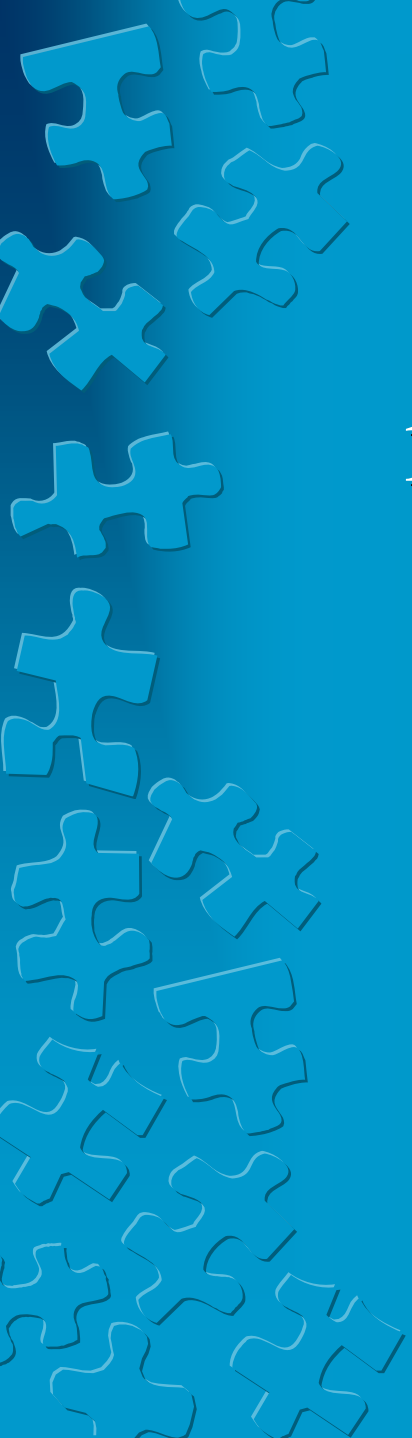


- Need for regional cooperation/coherence

# Problems



- Progress: some virtually finished IA, GES, T&I
- Scale of assessment very different


A decorative graphic in the top-left corner of the slide, consisting of several interlocking puzzle pieces. The pieces are arranged in a roughly triangular shape, with some pieces overlapping others. The pieces are a light blue color, matching the background, and have a slightly darker blue outline. The background is a solid, medium blue color.

# Challenge 2: Reaching international coherence

# GES

- Reflects the vision and ambition of MS towards the future of their marine waters
  - Is based on the ecosystem
  - Is all about the setting of baselines and targets
- 
- Targets need socio-economic considerations and need to be cost-effective

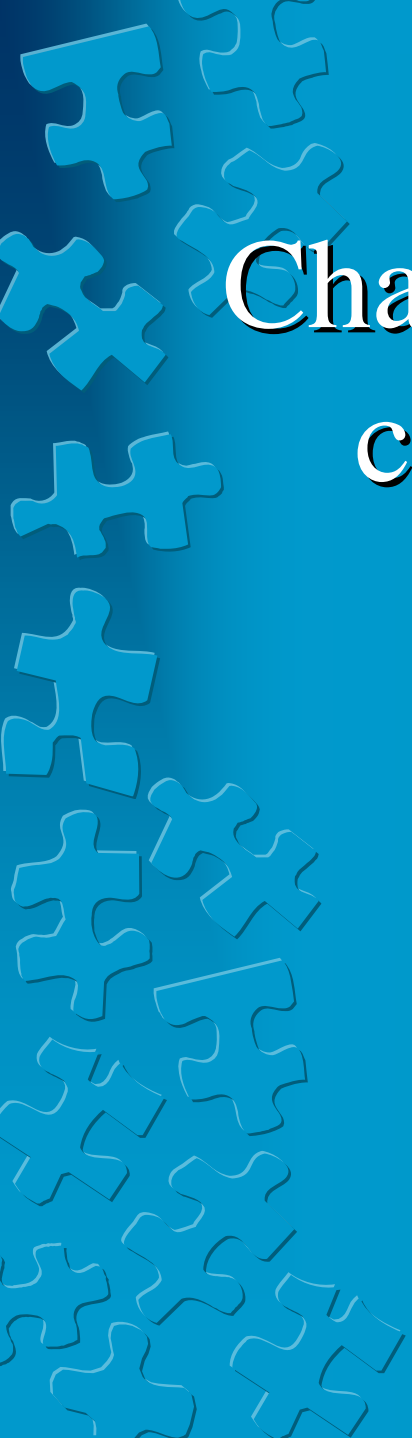


A decorative graphic on the left side of the slide consists of several interlocking puzzle pieces. The pieces are arranged in a vertical column, with some overlapping. They are rendered in a light blue color with a white outline, set against a darker blue background. The puzzle pieces are scattered along the left edge, creating a textured, geometric border.

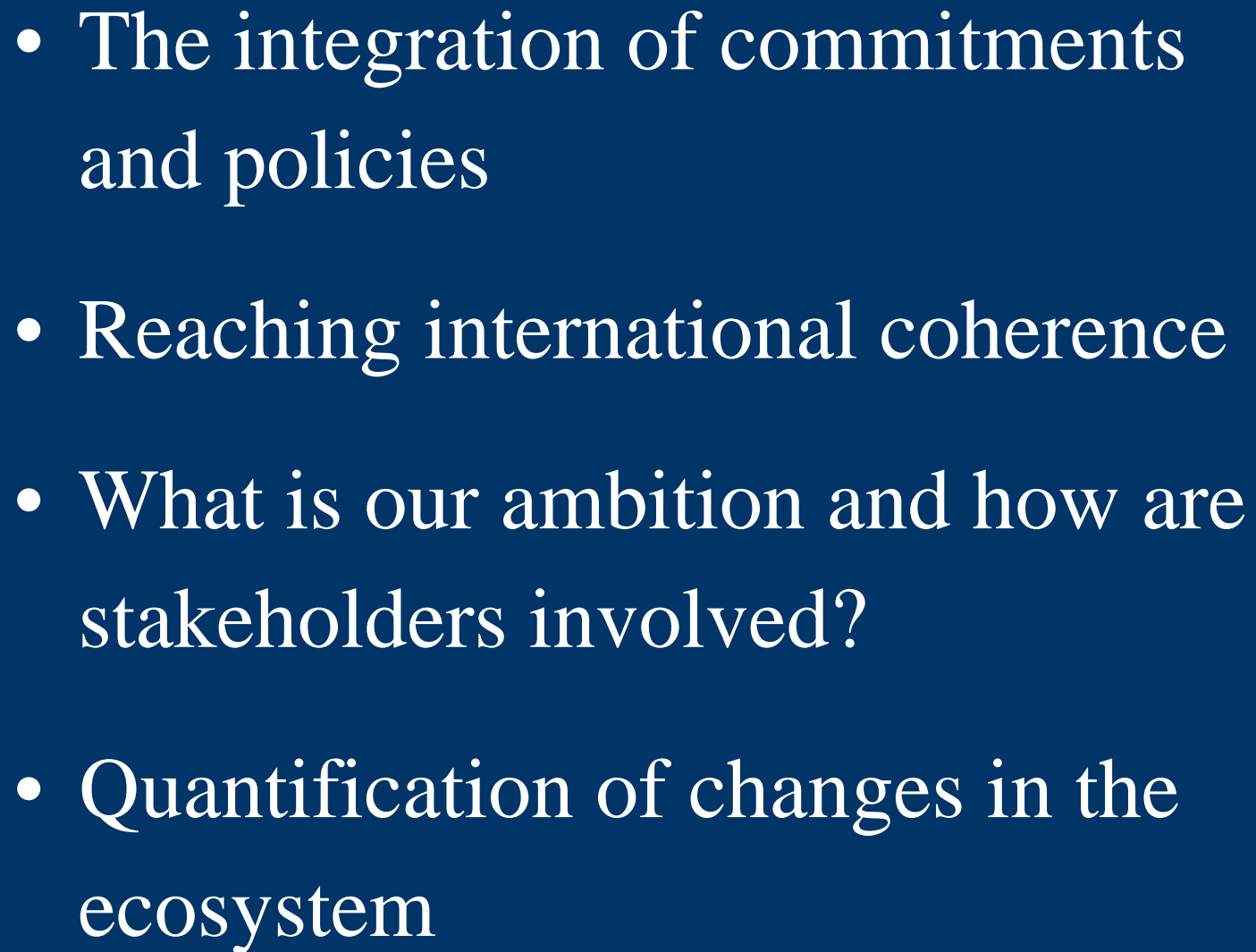
Challenge 3: What is our  
ambition and how are  
stakeholders involved ?

# GES

- Quantification of targets for biota?
- Biological variability and natural change
- Climate change

A decorative graphic on the left side of the slide consists of several interlocking puzzle pieces. The pieces are arranged in a vertical column, with some overlapping. They are rendered in a light blue color with a white outline, set against a darker blue background. The puzzle pieces are scattered along the left edge, creating a textured, geometric border.

# Challenge 4: Quantification of changes in the ecosystem

- 
- The integration of commitments and policies
  - Reaching international coherence
  - What is our ambition and how are stakeholders involved?
  - Quantification of changes in the ecosystem



Beeldbank Oostende