

**THREE NEW *DUPLOMINONA* SPECIES
(TURBELLARIA, MONOCELIDIDAE, MINONINAE)
FROM THE MEDITERRANEAN**

by

Paul M. Martens

Department SBM, Limburgs Universitair Centrum,
Universitaire Campus, B-3610 Diepenbeek, Belgium.

Résumé

Trois espèces nouvelles du genre *Duplominona* (Turbellaria, Monocelididae, Minoninae) de la Méditerranée.

Trois nouvelles espèces de Minoninae (Proseriata, Monocelididae) du genre *Duplominona* sont décrites : *Duplominona paucispina* sp.n., *Duplominona corsicana* sp.n. et *Duplominona longicirrus* sp.n.

D. paucispina est caractérisée par un cirre court avec neuf épines égales de 5-5,6 µm de long, *D. corsicana* a un cirre, long de 20 µm avec de nombreuses épines de 1-1,5 µm tandis que *D. longicirrus* a un cirre de 90 µm avec de nombreuses épines de 0,5 µm. Un aperçu des caractères diagnostiques des 14 espèces connues actuellement dans le genre *Duplominona* est présenté sous forme d'une clef d'identification.

Les trois espèces nouvelles proviennent des fonds sablonneux infralittoraux de la Baie de Calvi, Corse.

Introduction

During several intensive collecting campaigns in 1982, 1983 and 1984 at the «Station de Recherches Sous-Marines et Océanographiques» (STARESO) at Calvi (Corsica) about 200 species of marine micro-Turbellaria have been observed. Most of the collecting sites are infralittoral, down to 40 m depth and more, the majority of them with sandy bottoms and some with algae. In general species diversity was high but population densities were low, only a few individuals of each species having been found.

In the present paper, three new species of the genus *Duplominona* (Monocelididae, Minoninae) from infralittoral habitats are described: *D. paucispina* sp. n., *D. corsicana* sp.n. and *D. longicirrus* sp.n.. From the Mediterranean and its adjacent seas, only two Minoninae are known: *Duplominona istanbulensis* (Ax, 1959) from the Black Sea and the Marmara Sea (Ax, 1959) and *Minona trigonopora* Ax, 1956 from the French mediterranean salt marches at Canet (Ax, 1956).

The caryology of *Duplominona paucispina* sp.n. and *Duplominona corsicana* sp.n. has been studied and the results of these studies will be published elsewhere.

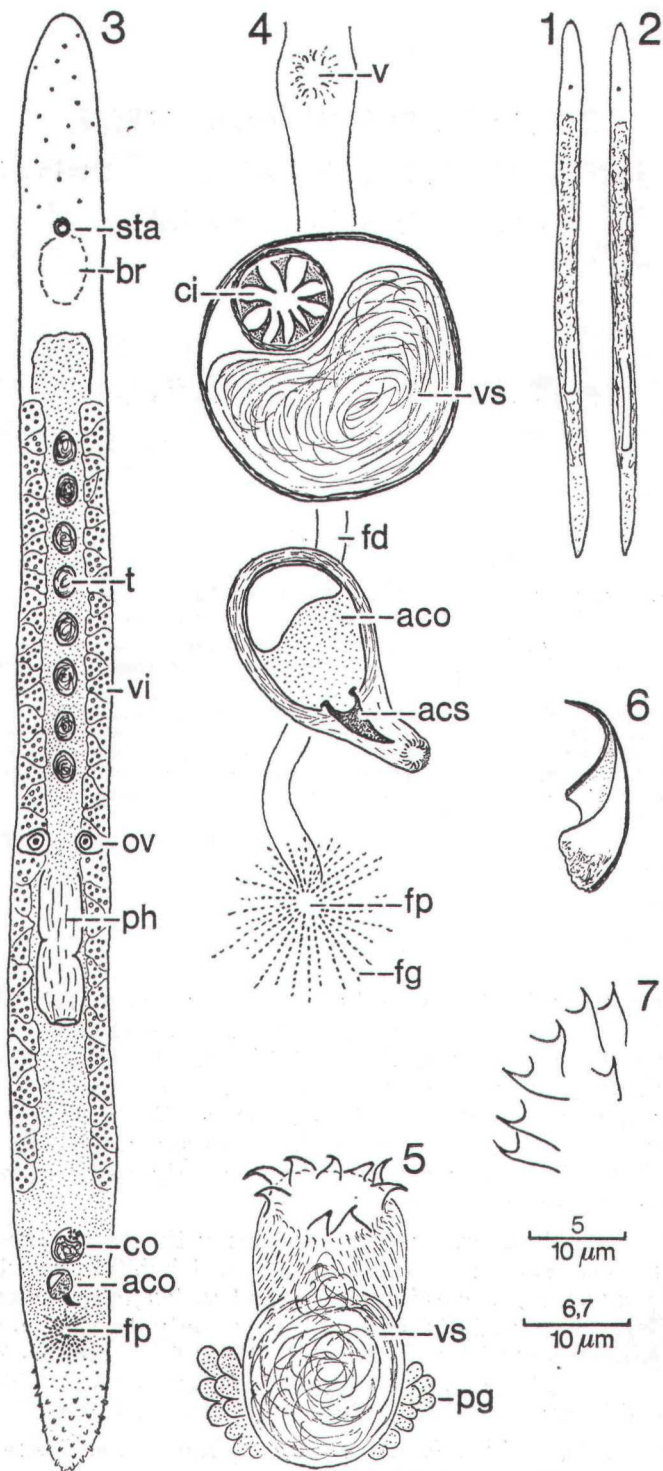


FIG. 1-7.

Material and methods

All samples were taken by SCUBA-diving; the sampling stations are indicated under «Localities» for each species.

Turbellaria were extracted from the sand using the $MgCl_2$ method (see Martens, 1984). Whole mounts were prepared with lactophenol from the individuals studied alive. Other representatives of the species (if found in sufficient numbers) were fixed in Bouin's fluid and serially sectioned (5 μm). Sections were stained with Heidenhain's iron hematoxylin, using eosin as a counterstain.

For species from which sectioned material is available the relative pore distances are given: a=mouth—vagina, b=vagina—male pore, c=male pore—pore of accessory organ, d=pore of accessory organ—female pore and e=female pore—caudal tip (see Karling, 1966 and Tajika, 1982).

Figures without a scale are freehand drawings, those with a scale were made with the camera lucida.

Type material is deposited in the zoological collection of Department SBM, Limburgs Universitair Centrum, Diepenbeek, Belgium.

DESCRIPTION OF THE NEW SPECIES

DUPLOMINONA PAUCISPINA sp.n. (Fig. 1-8)

Material. Several animals studied alive and mounted, two specimens sectioned sagittally, one of them designated as holotype.

Locality. Bay of Calvi (Corsica), in different stations with sandy bottom from 10 to 35 m depth (type locality). Date: 9.VI.82, 16.V.83, 18, 19, 20, 21, 22, 23.IX.83.

Etymology. Species name refers to the low number of spines in the cirrus (L., *paucis*, few; L., *spina*, spine).

Description

The living animals (Fig. 1-2) are 1.4-1.6 mm long and 0.1mm broad, without eyes or pigment, and have a rounded tail with adhesive papillae. The part in front of the gut is transparent with some oily drops. The pharynx lies between the second and the last third of the

FIG. 1-7.

Duplominona paucispina.

1-2. Free swimming animals. 3. General organisation of living animals (dorsal view). 4. Genital organs in living animals. 5. Everted cirrus of the copulatory organ, from whole mount. 6. Stylet of the accessory organ, from whole mount. 7. Some spines of the cirrus, from whole mount.

body. The body wall and the pharynx are of the same construction as in most Monocelididae (see Karling, 1966). The epidermis, 2-2.5 μm high, contains small eosinophilic rhabdites (1 μm long).

The topography of the genital organs in the living animals is shown in fig. 3. Eight testes lie medially in one row in front of the pharynx, the vitellaria stretch from about the same level as the first testis to just in front of the copulatory organ.

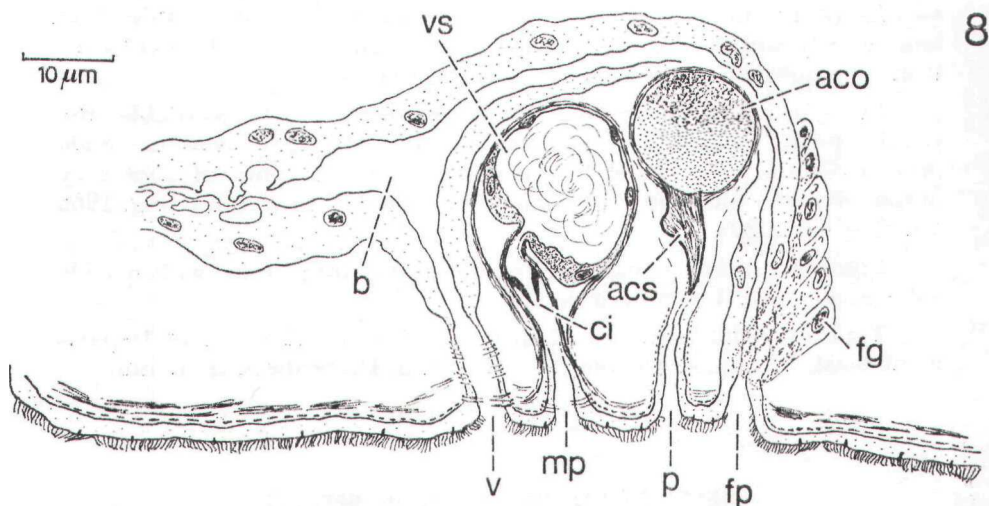


FIG. 8.

Duplominona paucispina.

Reconstruction of genital organs, from serial sagittal sections (from the left) (Holotype).

The copulatory organ is a globular muscular bulb (about 26 μm long) with the seminal vesicle and a short cirrus with nine relatively large spines. The spines are uniform in size and shape, 5-5.6 μm long and 5 μm broad at the base and attached to the cirrus wall at the same level. In moderately squeezed living animals with a dorso-ventrally orientated cirrus they resemble the spokes of a wheel (Fig. 4) and in the everted cirrus they form a girdle at its top (Fig. 5). No delimited prostate vesicle is present, and only the distal part of the epithelium of the seminal vesicle seems to be secretory containing a very fine granular secretion (Fig. 8). In squeezed and in sectioned material a few prostate glands are found at the left and the right side of the copulatory bulb (Fig. 5).

The bulb of the accessory organ («prostatoid») is situated behind the copulatory organ and apparently contains two kinds of secretion: rather coarse and basophilic in the proximal end of the bulb and fine and eosinophilic in the distal part. In the living animal, however, the proximal part of the reservoir looks empty, much like a large vacuole (Fig. 4 and 8). The stylet of the accessory organ is slightly curved and 19 μm long. The pore of the accessory organ is clearly separated from the male and the female genital pore as can be seen in living as well as in sectioned material.

Anteriorly to the copulatory organ the female duct is differentiated into a bursa of the resorbiens type (see Meixner, 1938, p. 68). Its vagina, surrounded by weakly developed muscles, opens through a pore in front of the male pore and distinctly separated from the latter. From the bursa the female duct continues backwards and opens through the female pore which is situated behind the accessory organ and surrounded by numerous erythrophilic glands.

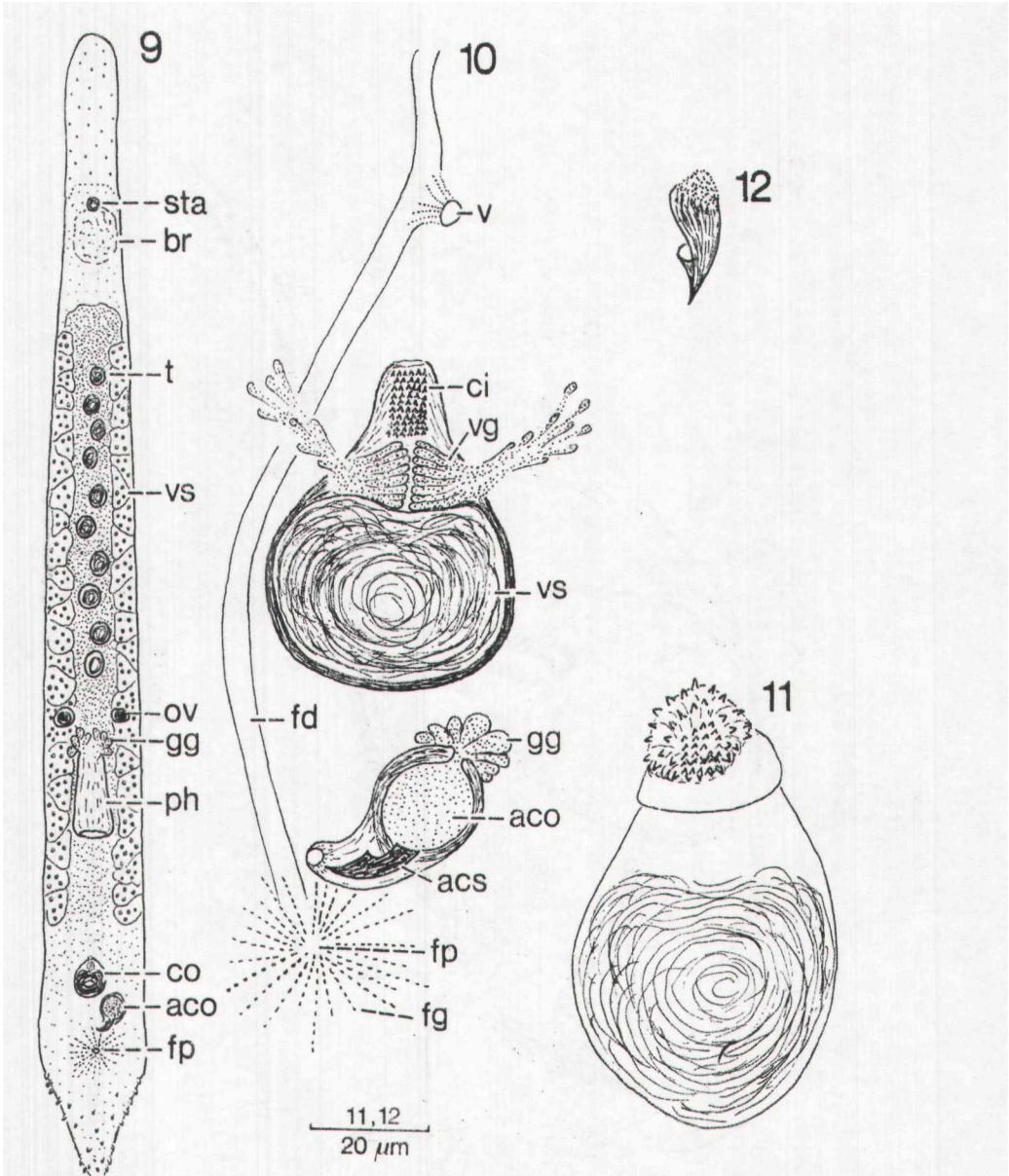


FIG. 9-12.

Duplominona corsicana.

9. General organisation of living animals (dorsal view). 10. Genital organs in living animals. 11. Stylet of the accessory organ, from whole mount. 12. Copulatory bulb with everted cirrus, from whole mount.

Diagnosis. Slender *Duplominona* species, 1.4-1.6 mm long, without eyes nor pigment. Cirrus with nine spines, uniform in shape and size, 5-5.6 μm long and 5 μm broad at the base. Stylet of the accessory organ 19 μm long. Vaginal pore, male pore, pore of the accessory organ and female pore separated from each other. Pore relation a:b:c:d:e=14:2:3:2:14.

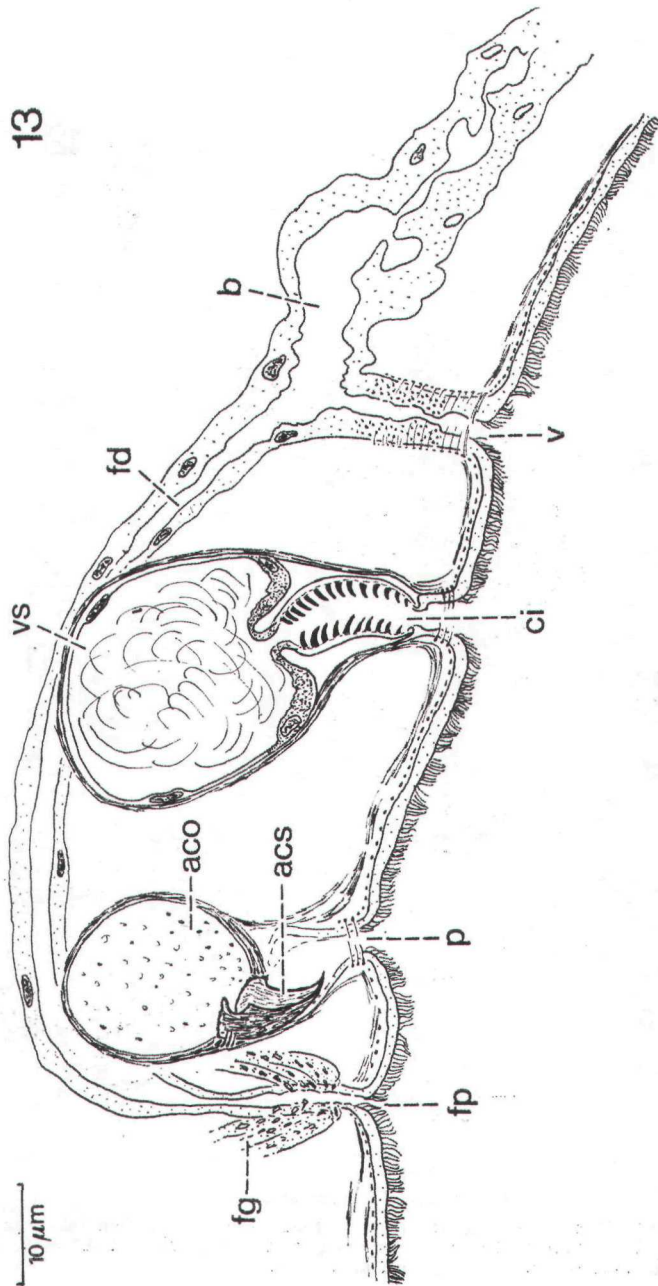


FIG. 13.

Duplominona corsicana.

Reconstruction of genital organs, from serial sagittal sections (from the right) (Holotype).

DUPLOMINONA CORSICANA sp.n. (Fig. 9-13)

Material. Several animals studied alive, some of them mounted. Five specimens sectioned, one of them designated as holotype.

Locality. Pointe de la Revellata (Bay of Calvi, Corsica) on sandy bottom at 30-40 m depth (type locality). Date: 20.V.83, 3,4.VII.83, 23.IX.83.

Etymology. Species name refers to the locality where it was found (Corsica).

Description

The living animals are 2-3 mm long and 0.2 mm broad, without eyes or pigment and with a slightly broadened anterior end (Fig. 9). Oily drops occur in front of the statocyst. The posterior end, with adhesive papillae, is triangular in shape. The pharynx lies at the front of the last third of the body. Body wall and pharynx are of the same construction as in the bulk of the Monocelididae.

The topography of the genital organs in the living animals can be derived from fig. 9: ten testes anteriorly to the pharynx (but not neatly aligned as in *Duplominona paucispina* sp.n.), a pair of ovaries just in front of the pharynx and vitellaria stretching from the level of the first testis to just in front of the copulatory organ.

The copulatory bulb is a globular and muscular bulb, about 80-90 μm long, enclosing the seminal vesicle, the prostate secretion and the cirrus. The cirrus is cylindrical, 20 μm long and 9 μm broad over its entire length. Its spines are uniform and 1-1.5 μm long. In living (Fig. 10) and in sectioned material prostate glands are found outside the bulb and enter the bulb from the left and the right side. The secretion is stored in the distal part of the seminal vesicle, without forming a separated prostate vesicle.

The accessory organ behind the copulatory organ is surrounded by a thick muscular layer and bears a stylet 20 μm in length. In living and sectioned animals parts of the glands are found outside the bulb (Fig. 10). The pore of the accessory organ is situated in front of the female pore and is clearly separated from the male and female pore.

As in *Duplominona paucispina* sp.n. a non-muscular bursa of the resorbiens type occurs in the female duct, with a vagina surrounded by some weak circular muscles. The female duct ends behind the accessory organ in the female pore, which is surrounded by erythrophylic glands.

Diagnosis. Slender *Duplominona* species of 2-3 mm long, lacking eyes and pigment. Cirrus cylindrical, 20 μm long, with numerous uniform spines of 1-1.5 μm . Stylet of the accessory organ 20 μm long. Pores of the genital organs separated from each other. Pore relation a:b:c:d:e=22:3:4:2:14.

DUPLOMINONA LONGICIRRUS sp.n. (Fig. 14-18)

Material. Two animals studied alive and conserved as whole mounts, one of them designated as holotype.

Locality. Pointe de la Revellata (Bay of Calvi, Corsica) on sandy bottom at 18-30 m depth (type locality). Date: 11.IV.83, 3.VII.83.

Etymology. Species name refers to the very long cirrus of the animal.

Description

The living animals are 2.7-3 mm and 0.3 mm broad, without eyes or pigment. They have rounded anterior and posterior ends, the latter with numerous adhesive papillae. The pharynx with very conspicuous glands, lies just behind the middle of the body.

The topography of the genital organs in the living animals is shown in fig. 14 and 16. The tests lie in 7-8 pairs, with the vitellaria extending from the level of the first pair of testes to the anterior limit of the copulatory organ. The ovaries are at the base of the pharynx.

The copulatory organ is extremely elongate (250 μ m) with a cirrus of some 65 μ m long that can extend up to 90 μ m in the living animal. Numerous very fine spines, 0.5 μ m long occur in its wall. At the base of the cirrus some glandular secretion can be seen but due to the lack of sectioned material it cannot be ascertained whether a separate prostate vesicle is present. The seminal vesicle (including the part with glandular elements) occupies about 3/4 of the whole bulb and is surrounded by its own muscle layer.

The accessory glandular bulb is elongate in squeezed animals and surrounded by a thick muscular envelope. The slightly curved stylet is 22 μ m long. The pore of the accessory organ is distinctly separated from the female pore behind it.

The female duct in front of the copulatory organ forms a bursa with a thick muscular wall. The vagina arises from its anterior part, where also both oviducts enter the bursa separately. Some glands seem to be present here but it cannot be excluded that the oviducts themselves have a thickened wall with resorptive function. The vagina is surrounded by weakly developed circular muscles and its pore is separated from the male genital pore. As usual the female duct continues from the bursa, passes the copulatory organ and the accessory organ, to the female ovipository pore which is surrounded by its glands.

Diagnosis. *Duplominona* species 2.7-3 mm long, lacking eyes and pigment. Very elongated copulatory organ with a long cirrus 65 μ m to 90 μ m, with small spines of 0.5 μ m over its whole length. Stylet of the accessory organ 22 μ m long. Pores of the genital organs separated from each other.

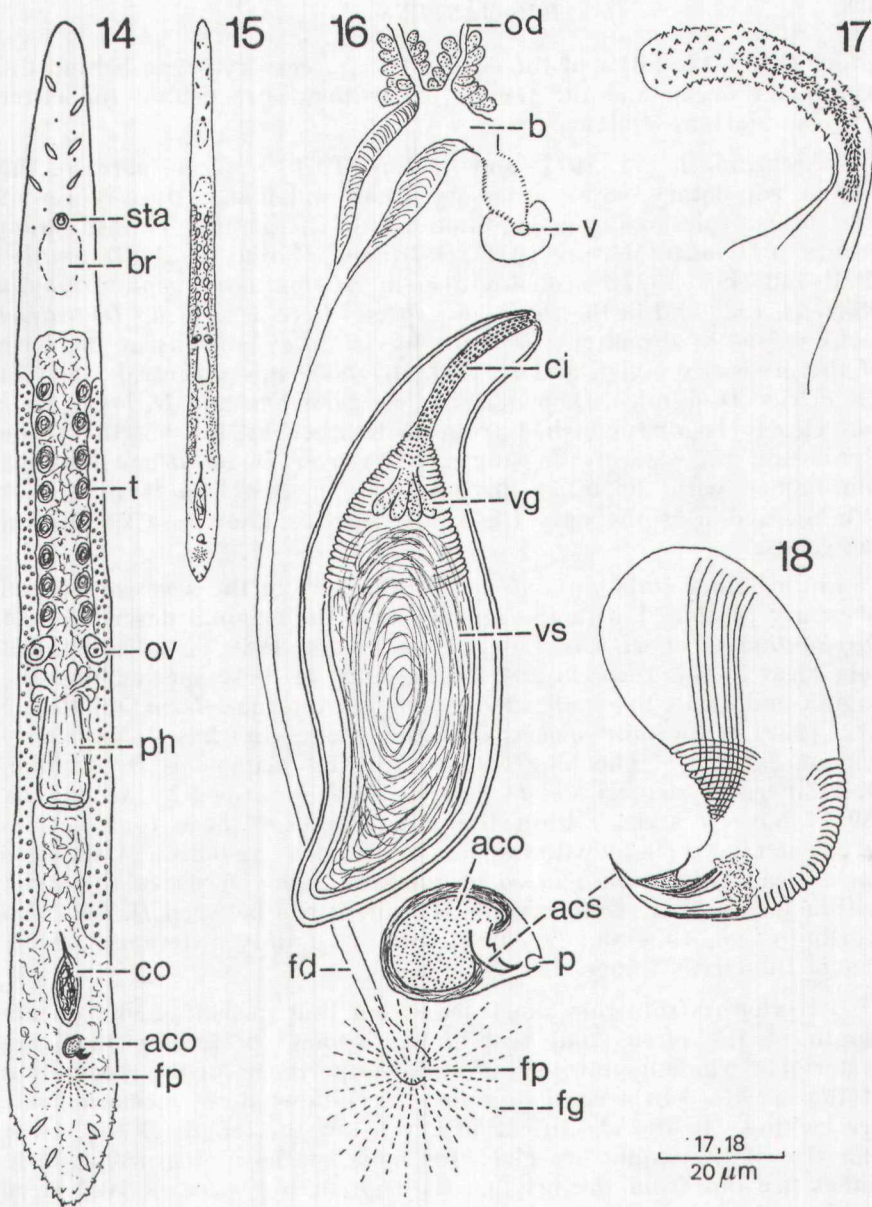


FIG. 14-18.

Duplominona longicirrus.

14. Free living animal. 15. General organisation of living animals. 16. Genital organs in living animals. 17. Accessory organ with stylet, from whole mount. 18. Everted cirrus, from whole mount.

DISCUSSION

The three new species clearly belong to the genus *Duplominona* Karling, 1966 characterized by: ovaries in front of the pharynx, pharynx behind the middle of the body, vagina in front of the copu-

latory organ, the latter of the duplex type, accessory organ behind the copulatory organ and the female ovipository pore behind the latter (cf. also Martens, 1984).

According to Ax (1977) and Karling (1978) separate pores of the vagina, copulatory organ, accessory organ and female duct represent the «basic» (plesiomorph) condition within the genus. This situation occurs in *D. mica* (Marcus, 1951), *D. tridens* (Marcus, 1954), *D. amnica* (Ball and Hay, 1977), probably also in *Duplominona septentrionalis* Martens, 1983 and in the three new species here described. *D. tridens* lacks spines in the cirrus, *D. mica* has alate expansions at the base of the accessory stylet, and *D. septentrionalis* has a central stylet in the cirrus. *D. amnica*, *D. paucispina*, *D. corsicana* and *D. longicirrus* can clearly be distinguished from each other by the length of the cirrus and the size of the spines. Moreover *U. amnica* cannot be confounded with the other three species since it is a large species (4 mm), and it is the only freshwater species known so far within the genus.

In all other *Duplominona* species the pore of the accessory organ is clearly combined with the female pore (the original description of *Duplominona canariensis* Ehlers and Ehlers, 1980 is, however, not very clear in this respect) and the majority of these species have the vagina ending in the male atrium (vagina interna). *D. istanbulensis* (Ax, 1959) is the only species of which the vagina has its own pore (vagina externa). The four species from the Galapagos *D. karlingi*, *D. krameri*, *D. sieversi* and *D. galapagoensis* described by Ax and Ax (1977) have a stylet within the cirrus and of these four species *D. sieversi* has a cirrus without spines. The three remaining Galapagos species can only be recognised by the size of the cirrus, of the stylet within it and of its spines, while the difference between *D. kaneohei* Karling *et al.*, 1972 and *D. canariensis* are mainly differences in the size of the cirrus spines.

It is clear from this short discussion that measurements on the length of the cirrus and size of the spines (preferably in living material or whole mounts) are of major importance for the recognition of the species. In several original descriptions these measurements are lacking. In the identification key below the length of the cirrus and size of the spines are given for most species. Measurements in italics are not from the original description but were derived from measurements of the drawings in the original description (when possible).

Other features may also prove to be important in the future, such as the degree of development of prostate glands, extra- or intracapsular situation of the glands of the accessory organ, etc., but a thorough revision of the genus with a reexamination of the type material is necessary to assess the full taxonomic and phylogenetic significance of these features.

The identification key below does not reflect any opinions on relationships. It is meant as a «summary» of the main diagnostic characters of the species known within the genus and as a practical tool, also for those not familiar with the Monocelididae.

Identification key to the species of the genus *Duplominona*

- 1.—Cirrus without a stylet 2
—A stylet within the cirrus 10
- 2.—Cirrus without spines, the posterior end of the animal with three toes with adhesive papillae (mediolittoral, coarse sand with detritus, San Sebastian, Brasil; Marcus, 1954)
—Cirrus with distinct spines 3
- 3.—Accessory stylet with an alate expansion. Cirrus $50\mu\text{m}$, spines $6\mu\text{m}$ *D. mica*
(infralittoral, 3-5m, fine to coarse sand, San Sebastian, Brasil; Marcus, 1951)
—Accessory stylet without an alate expansion 4
- 4.—Large freshwater species of 4mm length. Cirrus $\pm 100\mu\text{m}$, spines $\pm 6-7\mu\text{m}$ *D. amnica*
(fresh and brackish water, Marquarie Island; Ball and Hay, 1977)
—Marine species 5
- 5.—Vagina with its own pore (vagina externa) 6
—Vagina opens in the male atrium (vagina interna) 9
- 6.—Pore of the accessory organ combined with female ovipository pore. Cirrus with spines (size unknown) *D. istanbulensis*
(infralittoral, fine to medium sand, Marmara Sea and Black Sea; Ax, 1959)
—Pore of the accessory organ clearly separated from the female pore 7
- 7.—Cirrus short with nine spines $5-5,6\mu\text{m}$ long and Spin broad at the base *D. paucispina* sp.n.
—Cirrus with numerous spines 8
- 8.—Cirrus short ($20\mu\text{m}$) and cylindrical with numerous uniform spines of $1-1,5\mu\text{m}$ *D. corsicana* sp.n.
—Cirrus very long ($65-90\mu\text{m}$) with very small spines. $0,5\mu\text{m}$ *D. longicirrus* sp.n.
- 9.—Cirrus $30\mu\text{m}$ long with spines of $10-18\mu\text{m}$ (our measurements for the spines are $5-9\mu\text{m}$). Pore of the accessory organ combined with the female pore *D. kaneohei*
(mediolittoral, sand and stones, Coconut Island, Hawaii; Karling *et ai*, 1972)
—Cirrus $30-50\mu\text{m}$ long, spines $2\mu\text{m}$ long. Pore of the accessory organ unknown *D. canariensis*
(mediolittoral, sand, Gran Canaria; Ehlers and Ehlers, 1980)
- 10.—Vagina not combined with male atrium (vagina externa). Cirrus and stylet both $25\mu\text{m}$ long. Two types of spines: distal ones $7-9\mu\text{m}$, proximal ones $0,5\mu\text{m}$ *D. septentrionalis*
(infralittoral, sand between 17 and 40m depth, North Sea; Martens, 1983)
—Vagina opens in male atrium (vagina interna). Cirrus with uniform spines or no spines at all 11
- 11.—Cirrus without spines or extremely reduced 12
—Cirrus spines clearly present 13
- 12.—Cirrus without spines, stylet $32-36\mu\text{m}$ long *D. sieversi*
(mediolittoral, sand, Santa Cruz, Galapagos; Ax and Ax, 1977)

- Cirrus spines extremely reduced, stylet 22-24 μ m long *D. krameri*
(mediolittoral, coarse sand, Santa Cruz, Galapagos; Ax and
Ax, 1977)
- 13.—Stylet 22-23nm long, cirrus a little longer, spines 3-3.5 μ m long *D. karlingi*
(medio- and infralittoral, sand, Santa Cruz, Galapagos; Ax
and Ax, 1977)
- Stylet 45 μ m long, cirrus \pm 30 μ m and spines \pm 2 μ m long *D. galapagoensis*
(infralittoral, sand between 1-60m depth, Santa Cruz, Gala-
pagos; Ax and Ax, 1977)

Abbreviations in the figures

aco	: accessory organ	od	: oviduct
acs	: accessory stylet	ov	: ovary
b	: bursa	p	: pore
br	: brain	pg	: prostate glands
ci	: cirrus	ph	: pharynx
co	: copulatory organ	sta	: statocyst
fd	: female duct	t	: testes
fg	: female glands	v	: vagina
fp	: female pore	vg	: prostate vesicle
gg	: glands	vi	: vitellary
mp	: male pore	vs	: seminal vesicle

Acknowledgements

I am very much indebted to Dr. D. Bay, adjunct Director at STARESO, to his wife and to his staff for research facilities and assistance. I would like to express my thank to Professor Dr. E. Schockaert for the valuable discussion and critical reading of the manuscript. I also thank Professor Dr. M. Van Poucke for revising my English.

Summary

Three new species of Minoninae (Proseriata, Monocelididae), belonging to the genus *Duplominona*, are described from infralittoral sandy bottoms in the Bay of Calvi, Corsica: *Duplominona paucispina* sp.n., *Duplominona corsicana* sp.n. and *Duplominona longicirrus* sp.n.

D. paucispina is characterized by a short cirrus with only nine spines of the same size and shape (5-5.6 μ m long); *D. corsicana* has a cirrus, 20 μ m long with numerous small spines (1-1.5 nm) and *D. longicirrus* has a cirrus of 90 μ m length and numerous very fine spines of 0.5 μ m.

An overview of the major diagnostic features of the 14 known species of the genus *Duplominona* is given as an identification key.

REFERENCES

- AX, p., 1956. — Les turbellariés des étangs côtiers du littoral méditerranéen de la France méridionale. *Vie et Milieu*, supp., 5, pp. 1-215.
- AX, p., 1959. — Zur Systematik Ökologie und Tiergeographie der Turbellarienfauna in den ponto-kaspischen Brackwasser-meeren. *Zool. Jb. Syst.*, 87, pp. 43-184.

- AX, p., 1977. — Problems of speciation in the interstitial fauna of the Galapagos. *Mikrofauna Meeresboden*, 61, pp. 29-43.
- AX, p. and AX, R., 1977. — Interstitielle Fauna von Galapagos XIX. Monocelididae (Turbellaria, Proseriata). *Mikrofauna Meeresboden*, 64, pp. 1-44.
- BALL, I.R. and HAY, D.A., 1977. — The taxonomy and ecology of a new monocelid flatworm from Macquarie island (Platyhelminthes, Turbellaria). *Bijdrag. Dierkunde*, 47, pp. 205-214.
- EHLERS, B. und EHLERS, U., 1980. — Zur Systematik und geographischen Verbreitung interstitieller Turbellarien der Kanarischen Inseln. *Mikrofauna Meeresboden*, 80, pp. 1-23.
- KARLING, T.G., 1966. — Marine Turbellaria from the Pacific coast of North America IV. 1. Coelognoporidae und Monocelididae. *Ark. Zool.*, 18, pp. 493-528.
- KARLING, T.G., 1978. — Anatomy and systematics of marine Turbellaria from Bermuda. *Zool. Scr.*, 7, pp. 225-248.
- KARLING, T.G., MACKERRA, v. and DORJES, J., 1972. — First report on marine micro-turbellaria from Hawaii. *Zool. Scr.*, 1, pp. 251-269.
- MARCUS, E., 1951. — Turbellaria Brasileiros (9). *Bolm. Fac. Filos. Ciênc. Univ. S. Paulo (zool.)*, 16, pp. 5-216.
- MARCUS, E., 1954. — Turbellaria Brasileiros XI. *Papéis Dep. Zool. S. Paulo*, 11, pp. 419-489.
- MARTENS, P.M., 1983. — Three new species of Minoninae (Turbellaria, Proseriata, Monocelididae) from the North Sea, with remarks on the taxonomy of the subfamily. *Zool. Scr.*, 12, pp. 153-160.
- MARTENS, P.M., 1984. — Comparison of three different extraction methods for Turbellaria. *Mar. Ecol. Prog. Ser.*, 14, pp. 229-234.
- MEIXNER, J., 1938. — Turbellaria (Strudelwürmer). I. *Tierwelt N.-U. Ostsee*, 4b, pp. 1-146.
- TAJIKI, K.-I., 1982. — Marine Turbellarien aus Hokkaido, Japan IX. Monocelididae (Proseriata). *Bull. Lib. Arts and Sci. Course, Sch. Med. Nihon Univ.*, 10, pp. 9-34.