



Rakha, Emad and Soria, Daniele and Green, Andrew R. and Lemetre, Christophe and Powe, Desmond G. and Nolan, Christopher C. and Garibaldi, Jonathan M. and Ball, Graham and Ellis, Ian O. (2014) Nottingham Prognostic Index Plus (NPI+): a modern clinical decision making tool in breast cancer. *British Journal of Cancer*, 110 (7). pp. 1688-1697. ISSN 0007-0920

Access from the University of Nottingham repository:

<http://eprints.nottingham.ac.uk/28157/1/Rakha2014.pdf>

Copyright and reuse:

The Nottingham ePrints service makes this work by researchers of the University of Nottingham available open access under the following conditions.

- Copyright and all moral rights to the version of the paper presented here belong to the individual author(s) and/or other copyright owners.
- To the extent reasonable and practicable the material made available in Nottingham ePrints has been checked for eligibility before being made available.
- Copies of full items can be used for personal research or study, educational, or not-for-profit purposes without prior permission or charge provided that the authors, title and full bibliographic details are credited, a hyperlink and/or URL is given for the original metadata page and the content is not changed in any way.
- Quotations or similar reproductions must be sufficiently acknowledged.

Please see our full end user licence at:

http://eprints.nottingham.ac.uk/end_user_agreement.pdf

A note on versions:

The version presented here may differ from the published version or from the version of record. If you wish to cite this item you are advised to consult the publisher's version. Please see the repository url above for details on accessing the published version and note that access may require a subscription.

For more information, please contact eprints@nottingham.ac.uk

Nottingham Prognostic Index Plus (NPI+): a modern clinical decision making tool in breast cancer

EA Rakha^{1,4}, D Soria^{2,5}, AR Green¹, C Lemetre³, DG Powe⁴, CC Nolan², JM Garibaldi^{2,5}, G Ball³,
IO Ellis^{*1,4}

¹Breast Cancer Pathology Research Group, Division of Oncology, School of Medicine
and ²School of Computer Science, University of Nottingham, Nottingham

³School of Biomedical and Natural Sciences, Nottingham Trent University, Nottingham

⁴Cellular Pathology, The Breast Institute, Nottingham University Hospitals NHS Trust,
Nottingham

⁵Advanced Data Analysis Centre, University of Nottingham, Nottingham

Correspondence:

Professor Ian O Ellis

University of Nottingham and Nottingham University Hospital NHS Trust

Department of Histopathology, Nottingham City Hospital,

Hucknall Road, Nottingham, NG5 1PB, UK

Tel: (44) 0115-9691169

Fax: (44) 0115- 9627768

Email: Ian.Ellis@nottingham.ac.uk

Running Title: Nottingham Prognostic Index Plus

Abstract

Current management of breast cancer (BC) relies on risk stratification based on well-defined clinicopathologic factors. Global gene expression profiling studies have demonstrated that BC comprises distinct molecular classes with clinical relevance. In this study, we hypothesized that molecular features of BC are a key driver of tumour behaviour and when coupled with a novel and bespoke application of established clinicopathologic prognostic variables, can predict both clinical outcome and relevant therapeutic options more accurately than existing methods. In the current study, a comprehensive panel of biomarkers with relevance to BC was applied to a large and well-characterised series of BC, using immunohistochemistry and different multivariate clustering techniques, to identify the key molecular classes. Subsequently, each class was further stratified using a set of well-defined prognostic clinicopathologic variables. These variables were combined in formulae to prognostically stratify different molecular classes, collectively known as the Nottingham Prognostic Index Plus (NPI+). NPI+ was then used to predict outcome in the different molecular classes with. Seven core molecular classes were identified using a selective panel of 10 biomarkers. Incorporation of clinicopathologic variables in a second stage analysis resulted in identification of distinct prognostic groups within each molecular class (NPI+). Outcome analysis showed that using the bespoke NPI formulae for each biological breast cancer class provides improved patient outcome stratification superior to the traditional NPI. This study provides proof-of-principle evidence for the use of NPI+ in supporting improved individualised clinical decision making.

Keywords: Breast cancer, classification, prognostic index, molecular, clinical, outcome

Introduction

Breast cancer (BC), the most common cancer and the second leading cause of cancer death in women, represents a heterogeneous group of tumours with varied genotypic and phenotypic features, behaviour and response to therapy. This, in addition to numbers and complexity of available treatment options, has resulted in decision making difficulties regarding the most appropriate treatment choice. Clinical decision making in personalised BC management requires robust and accurate risk stratification based not only on outcome prediction but also on a biological basis (Clark, 1994). Methods have been developed to assist in predicting patient outcome and to support clinical decision making in breast cancer management. Examples of such methods include the Nottingham Prognostic Index (NPI) (Balslev *et al*, 1994; D'Eredita *et al*, 2001; Galea *et al*, 1992), St Gallen consensus criteria (Goldhirsch *et al*, 2009), the National Comprehensive Cancer Network (NCCN) guidelines (Carlson *et al*, 2006) and Adjuvant! Online (Ravdin *et al*, 2001).

The current NPI is based on a combination of histopathological examination of tumour size, lymph node stage and tumour grading assembled in a prognostic index formula (Haybittle *et al*, 1982) and can be used as a risk stratifier in unselected cohorts of operable early-stage primary breast cancer patients. Prognosis worsens as the NPI numerical value increases and by using cut-off points patients may be stratified into good, moderate and poor prognostic groups (Blamey *et al*, 2007; Ellis *et al*, 1987). The NPI has been confirmed after long-term follow-up (Galea *et al*, 1992), validated independently in large multi-centre studies (Balslev *et al*, 1994; Brown *et al*, 1993) and revised in order to stratify patients into 5 prognostic groups (Blamey *et al*, 2007). However, the NPI cannot reveal the full clinical/survival outcome heterogeneity currently observed in BC and would benefit from greater sophistication to support more accurate personalised management of BC patients. It is now recognised that the biological characteristics of BC are important for clinical management and incorporation into the NPI could significantly improve the delivery of personalised medicine in breast cancer patients, .

Current data imply that BC is a heterogeneous group of diseases with complex and distinctive underlying molecular pathogenesis (Beckmann *et al*, 1997; Ellis *et al*, 1999; Lishman & Lakhani, 1999). Further support for this hypothesis is provided by gene expression profiling (GEP) which have identified distinct molecular tumour groups with direct clinical relevance (Darb-Esfahani *et al*, 2009; Nielsen *et al*, 2010; Parker *et al*, 2009; Perou *et al*, 1999; Sorlie *et al*, 2001; van 't Veer *et al*, 2003; van de Vijver *et al*, 2002). Whilst this provides further compelling evidence that

tumour biology is a key variable required for decision making in personalised BC management, the heterogeneity within these groups and its incorporation with the currently validated variables and prognostic indices add complexity. There is also evidence that individual clinicopathologic prognostic factors behave differently in the different molecular subclasses; for instance tumour grade and size, which have significant prognostic value in the luminal/estrogen receptor positive classes, show a limited prognostic power in HER2-positive (Foulkes *et al*, 2009; Foulkes *et al*, 2010) and basal-like tumours (Rakha *et al*, 2010).

Although available data support incorporation of GEP, particularly multigene assays, in specific clinical settings, the difficulty in the integration of the clinicopathologic variables with the molecular assays, the reproducibility and cost limit the clinical utility of this technology. An alternative approach is to initially classify BC into distinct molecular classes using a panel of proteins with known relevance to BC utilizing the robust commonplace technology, immunocytochemistry, applied to routine formalin fixed paraffin embedded tumour samples.

As previously reported (Abd El-Rehim *et al*, 2005; Green *et al*, 2013; Soria *et al*, 2010), seven core breast cancer classes, were identified by evaluation of the expression levels for a selective panel of 25 BC-related biomarkers determined using immunohistochemistry and supervised classification approaches based on the naïve Bayes classification performance (Soria *et al*, 2008). To make this classification easily applicable in routine practice, the number of markers was further reduced and 10 markers were found to be the minimum number which is required to retain the classification. This formed the basis of the development of a fuzzy rule induction algorithm (using the methodology previously described in Rasmani *et al* (2009)) to classify the breast tumours into one of the seven classes (Abd El-Rehim *et al*, 2005; Green *et al*, 2013; Soria *et al*, 2010). The core molecular classes identified include three luminal classes tumour characterised by high luminal Ck7/8 and hormone receptor expression. Luminal A and Luminal B tumours show high expression of CK7/8, ER, HER3 and HER4 but are separated by lower levels of PgR expression in Luminal B. Luminal N tumours show differential expression of HER3 and HER4. The two basal classes of tumour, characterised by high basal expression, are separated by p53 protein expression levels: high p53 (Basal – p53 altered) or low p53 (Basal – p53 normal). The two HER2+ classes are characterised by HER2 over-expression and are either positive or negative for the expression of ER. These distinct molecular classes of BC showed significant association with patient outcome.

In this study, we examine the hypothesis that molecular features of BC are a key driver of tumour behaviour and that the influence of established prognostic will vary between classes. As a consequence application of established clinicopathologic prognostic variables will require development of bespoke prognostic indices to improve prediction of both clinical outcome and relevant therapeutic options. To examine this hypothesis a comprehensive panel of biomarkers with relevance to BC, described above, has been applied to a large and well-characterised series of BC, using immunohistochemistry and different multivariate clustering techniques, to identify the key molecular classes, phase 1 of Nottingham Prognostic Index Plus (NPI+) classification. Subsequently, each class was further stratified using a set of well-defined prognostic clinicopathologic variables. These variables were combined in bespoke formulae to prognostically stratify different molecular classes, NPI+ classification phase 2. Thus NPI+ is based on a two tier evaluation; the initial assessment determines the biological class of the tumour and is subsequently combined with a second level analysis of traditional clinicopathologic prognostic variables resulting in tailored (bespoke) NPI-like formulae for each biological class.

Patients and Methods

Patients

A series of 1,073 patients from the Nottingham Tenovus Primary Breast Carcinoma Series, aged 70 years or less, presenting with primary operable (stages I, II and III) invasive breast cancer between 1986-98 were used. This is a well-characterised consecutive series of patients who were uniformly treated according to standard clinical protocols (Abd El-Rehim *et al*, 2005; Rakha *et al*, 2008). All tumours were less than 5 cm diameter on clinical/pre-operative measurement and/or on operative histology (pT1 and pT2). Women aged over 70 years were not included because of the increased confounding factor of death from other causes and because primary treatment protocols for these patients often differed from those for younger women. Adjuvant systemic therapies were offered according to the Nottingham Prognostic Index (NPI) (Galea *et al*, 1992) and hormone receptor (HR) status (Galea *et al*, 1992). The NPI was calculated using the following formula: $NPI = \text{histological grade (1-3)} + \text{lymph node (LN) stage (1-3; 1= negative, 2=1-3 nodes positive, 3= } \geq 4 \text{ nodes positive)} + (\text{tumour size/cm} \times 0.2)$. No systemic therapy was offered to patients in the Good prognostic groups (NPI

≤3.4). Patients in the Moderate I group (NPI 3.41-4.4) with HR-positive tumours were offered hormonal therapy. Patients in the Moderate II (4.41-5.4) and Poor (NPI >5.41) groups received hormone therapy for HR-positive tumours and cytotoxic therapy (classical cyclophosphamide, methotrexate and 5-fluorouracil (CMF)) for HR-negative tumours if and the patient is fit enough to tolerate chemotherapy. Hormonal therapy was given to 420 patients (39.0%) and chemotherapy to 264 (24.5%). Data relating to survival was collated in a prospective manner for those patients presenting after 1989 only. Breast cancer specific survival (BCSS) was defined as the interval between the operation and death from breast cancer, death being scored as an event, and patients who died from other causes or were still alive were censored at the time of last follow-up. This study was approved by the Nottingham Research Ethics Committee 2 under the title 'Development of a molecular genetic classification of breast cancer'.

Biomarker assay

Immunohistochemical reactivity for 10 proteins, with known relevance in breast cancer including those used in routine clinical practice, were previously determined using standard immunocytochemical techniques on tumour samples prepared as tissue microarrays. These markers were chosen from a comprehensive panel of 25 markers used in our previously study (Abd El-Rehim *et al*, 2005) as the minimum number of markers that can maintain class membership and identify the same molecular classes (Green *et al*, 2013). The biomarkers used for classification were Estrogen Receptor (ER), Progesterone Receptor (PgR), cytokeratin (CK) 5/6, CK7/8, epidermal growth factor receptor (EGFR; HER1), c-erbB2 (HER2), c-erbB3 (HER3), c-erbB4 (HER4), p53, and Mucin 1. Levels of immunohistochemical reactivity were determined by microscopic analysis using the modified Histochemical score (H-score), giving a semiquantitative assessment of both the intensity of staining and the percentage of positive cells (values between 0-300) (Goulding *et al*, 1995; McCarty *et al*, 1985). For HER2, the American Society of Clinical Oncology/College of American Pathologists Guidelines Recommendations for HER2 Testing in Breast Cancer were used for assessment (Wolff *et al*, 2007). Equivocal (2+) cases were confirmed by CISH as previously described (Garcia-Caballero *et al*, 2010).

Identification of Biological Class

As previously reported (Soria *et al*, 2010), six core breast cancer classes, with an additional unclassifiable class, were obtained using a consensus clustering approach between different clustering methods. Briefly, four-step methodology for elucidating core, stable classes of data from a complex, multi-dimensional dataset was as follows: 1) A variety of clustering algorithms

were run on the data set including Hierarchical, K-means, Partitioning around medoids, Adaptive resonance theory and Fuzzy c-means. 2) Where appropriate, the most appropriate number of clusters was investigated by means of cluster validity indices. 3) Concordance between clusters, assessed both visually and statistically, was used to guide the formation of stable 'core' classes of data. 4) A variety of methods were utilised to characterise the elucidated core classes. Concordance among solutions was evaluated using the Cohen's kappa coefficient κ . For inspection of the patient characteristics in each class, the distribution of each variable in the class was compared with its distribution in the total sample, using boxplots. A conventional multi-layer perceptron artificial neural network model was utilised such that individual H-scores derived from the tissue microarray analysis of the clinical samples were set as inputs and the class was set as the output using Boolean notation. This allowed the identification of markers that drive membership of a given class and that discriminate the class from the others.

Three luminal subgroups (Luminal-A [no=370], Luminal-N [no=146] and Luminal-B [no=123]), two basal classes (basal-p53-altered [no=126] and basal-p53-normal [no=87]) and a HER2-positive class (HER2+ [no=145]) were highlighted. In a subsequent study (Green *et al*, 2013) the HER2+ class was divided into two subgroups (HER2+/ER+ [no= 60] and HER2+/ER- [no=85]).

Development of NPI formulae for each Biological Class

A Cox regression analysis was performed for the overall population for a selection of available and well-established histopathologic prognostic factors. The variables tested were coded using a numerical categorical or continuous, depending on the variable, method. The variables included were: Number of positive nodes (N) (including nodal stage (St)), Tumour Size (Sz), Tumour Grade (including its components namely Tubule formation, Nuclear pleomorphism and Mitotic index (M) (Rakha *et al*, 2008)), LymphoVascular Invasion (LVI), Estrogen Receptor status (ER), Progesterone Receptor status (PgR) and HER2 status. The NPI formulae were used to determine the prognostic effect in each biological class. The NPI+ score is determined by utilisation of the Beta values generated by the COX regression. These beta values indicate the magnitude of the influence of the hazard.

Survival analysis

After identification of the relevant parameters and their influence upon the prognostic model and within the context of each class, the individuals of the populations were assigned a NPI+ value

in order to stratify them into different subgroups of prognostic relevance. In this preliminary work, the groups were assigned according to the integer value of the NPI⁺ score. This helped to ultimately stratify the cohorts of patients of each biological class in a Kaplan-Meier curve.

Results

Biological Class

In this study, using a consensus clustering approach and a panel of routinely applicable immunohistochemical markers with relevance to breast cancer, seven core molecular breast cancer classes were identified. These classes included 370 patients in class 1 (Luminal A); 146 class 2 (Luminal N); 123 class 3 (Luminal B); 126 class 4 (basal p53 altered); 87 class 5 (basal p53 normal); 60 class 6 (HER2⁺ / ER⁺), and 85 class 7 (HER2⁺ / ER⁻).

Development of NPI formulae for each class

After successive removal of the least significant (i.e. with p values above 0.2) parameters during different steps, the final factors with the most significant results, according to their beta value in the Cox regression analysis, were identified. The proportional hazard ratio Cox regression identified six clinicopathologic prognostic factors of importance within the population in predicting breast cancer specific survival (BCSS): N (nodal number), St (stage), Sz (size), M (mitosis), LVI and PgR. Once these factors were identified, the population was split into the biological classes, as determined above, and Cox regression analyses were performed independently for each class in order to obtain the most significant clinicopathologic prognostic factors and their β -value in the context of the classes. Kaplan-Meier analysis showed that using formulae, based on N, Sz, St, M, LVI and PgR, for each biological breast cancer class provides improved and highly significant patient outcome stratification compared to the traditional NPI (Fig 1a-g). These variables were combined to form formulae that vary among different classes leading to bespoke NPI-like formulae for each of the seven biological classes forming a new biomarker based prognostic index (NPI⁺). This NPI⁺ was then used to predict outcome (BCSS) in the different molecular classes and the NPI⁺ outcome prediction was compared to that achieved by the traditional NPI in each of the biological classes (Fig 1a-g). In addition to improved outcome prediction using NPI⁺ compared to the traditional NPI in each class, NPI⁺ provided more clinically relevant stratification with splitting of each class into 2 or 3 groups compared to the six classes of NPI.

Prediction of adjuvant therapy benefit

Although the current study is not derived from a randomised clinical trial samples, the cases were stratified based on adjuvant systemic therapy in an attempt to assess the potential value of using NPI+ to predict outcome in the different classes. The number of the patients receiving either endocrine therapy or chemotherapy in each of the NPI+ classes is summarised in Table 2.. When the cohort was stratified according to systemic therapy, NPI+ was found to predict good versus adverse outcome for all of the biological classes in both hormone therapy treated patients (Figure 2) and chemotherapy treated patients (Figure 3) with the exception of chemotherapy benefit in class 5 (Basal p53 normal) in which few deaths were observed in the group as a whole (Figure 3c). This approach is superior to use of the traditional NPI (Figure 4) which provides overall patient stratification but lacks similar ability to predict adverse outcome effectively in specific molecular classes.

Discussion

Improved tailoring of treatment for breast cancer requires integration of clinical pathologic and cancer biological information to ensure all known variables which could potentially influence patient outcome and response to therapeutic treatments are considered. Subsequently, there has been increasing interest in the clinical utility of multigene assays, such as the Oncotype DX[®] (Paik *et al*, 2004) and the MammaPrint[®] test (van 't Veer *et al*, 2002), and their integration into breast cancer management strategies in certain clinical settings. Although the concept of molecular taxonomy of breast cancer using global gene expression profiling has attracted attention of the scientific community, their incorporation into routine clinical decision making did not prove successful for a number of reasons. These include cost, reproducibility, validation and lack of of suitability to routine clinical settings.

Previously, we (Abd El-Rehim *et al*, 2005) (Green *et al*, 2013) and others (Ambrogi *et al*, 2006; Callagy *et al*, 2003) have used immunohistochemistry (IHC) and tissue microarray (TMA) technology to develop a proposal for a modern molecular classification of human breast cancer comparable to that produced by gene expression microarrays. By way of contrast, our methodology is expected to provide not only a simple and cost-effective approach but also a robust, feasible and reproducible method for breast cancer risk stratification. In this study, we hypothesised that the combination of molecular taxonomy using a panel of IHC biomarkers with traditional prognostic clinicopathologic variables can produce a 'state of the art' approach of risk

stratification in a reproducible and balanced way. This approach is driven by our improved understanding of breast cancer biology and its impact on tumour behaviour and response to therapy, in addition to the expanding field of systemic and targeted therapy and subsequent difficulty in predicting outcome in these complex circumstances.

Initially, the combined protein expression profiles of 25 well-characterised biologically relevant biomarkers were assessed. These included proteins involved in different cellular functions and disease pathways including cell proliferation, adhesion, signal transduction and structural proteins. Using a consensus of clustering methodology and modelling techniques, we have developed a clinically based classification of breast cancer based on 10 biomarkers (Green *et al*, 2013). This has confirmed seven classes, comparable to those identified with gene expression analysis. Subsequently, we have further developed the algorithms in order to reduce the number of biomarkers required for classification to a maximum of ten biomarkers. These key biological phenotypes of breast cancer can be identified using standard, widely available immunocytochemistry technology and are associated with significantly different patient outcomes. Also of importance is the observation that 93% of breast cancer cases clearly exhibit core class membership criteria, while only 7% remain unclassified. In addition, we believe that using this classification system provides a reflection of the complex molecular portrait of BC more than that could be obtained using the three marker panel (ER, PgR, HER2) assessed in routine practice. In the second phase, we used the existing clinicopathologic variables to stratify each biological class into clinically distinct subgroups using bespoke NPI -like formulae, known as the NPI+. The parameters used for the NPI+ for each of the 7 core molecular class is not only different for each class but also incorporate additional well validated variables such as LVI (Rakha *et al*, 2012) and PgR (Prat *et al*, 2013) that were not considered in the generation of the traditional NPI index. The use of such formulae not only overcomes problems associated with the variable prognostic power of each individual clinicopathologic factors in the different molecular classes but also provides a way of incorporating biological and clinical variables in a scientifically and clinically relevant way (Dunkler *et al*, 2007).

The aim of the study is not revolution but evolution; the aim is not to replace current proven and established methods but to build on and improve the current prognostic methods by combining the well-established powerful clinicopathologic variables with novel biomarker information. In developing our prognostic toolkit we aimed to provide an assay compatible with routinely processed formalin fixed paraffin embedded tissue, offering a level of sensitivity and predictive capabilities far better and more sophisticated than present classification systems. Our results

demonstrate that NPI+ not only provides prognostic information with consideration of biological features but NPI+ also performs better than traditional NPI and can subsequently help guiding treatment decision in a personalised fashion (Table 3). We believe NPI+ combines the breadth of AdjuvantOnline! (Olivotto *et al*, 2005) with greater direct clinical validation, whilst also having depth of clinical and biological relevance of the current commercial solutions. NPI+ will enable a more sophisticated personalised treatment tool for breast cancer patients by providing: 1) Improved prognostic analysis, 2) Predict risk of disease recurrence, 3) Provide health economic savings through appropriate targeting of treatment, 4) NPI+ uses routine clinical samples and robust laboratory methods integrating easily into current international clinical practice.

This study however has limitations. Therapy decisions of the current study patients' cohort were based on similar prognostic markers at the time point of the first diagnosis with the potential of adjuvant therapy confounding effect. There may be an underrepresentation of cases without chemotherapy in the group of patients with a low initial NPI (good prognostic group), likewise the group of patients without a chemotherapy in patients with a high initial NPI (poor prognostic group) is rather low. This is a recognised limitation of prognostic marker and risk stratifiers assessment in the current era in which depriving patients from adjuvant treatment cannot be ethically justified. Initial results of this study indicate prognostic value when patients were stratified based on systemic therapy. Currently additional cohorts are being tested to provide sufficient number in the different treatment subgroups. Although phenotypic classification into core luminal, basal and HER2 classes is possible using smaller panels of 3 to 5 antibodies (Carey *et al*, 2006; Cheang *et al*, 2008), such limited panels cannot further sub classify these core groups. Our study clearly demonstrates that using a larger panel of 10 biomarkers a higher level of stratification is achieved which may have direct and important clinical relevance.

In conclusion, this study provides proof-of-principle evidence for the development of a novel prognostic index (NPI+) that combines both established clinicopathologic and biological features of breast cancer. Validation in different national and international tumour series is currently underway. Furthermore, its clinical utility and impact on health economics will be typically assessed in a prospective randomised clinical trial.

Acknowledgements

Chris Sheehan, Caroline Sykes

Conflict of Interest statement

None Declared

Role of the Funding Source

This study was funded by MRC DPFS scheme to establish a biomarker based prognostic assay (NPI+) for breast cancer by integrating this discrete panel of ten predictive biomarkers of long term survival and therapeutic response with existing clinical and molecular pathology knowledge to support individualised clinical decision making.

References

- Abd El-Rehim DM, Ball G, Pinder SE, Rakha E, Paish C, Robertson JF, Macmillan D, Blamey RW, Ellis IO (2005) High-throughput protein expression analysis using tissue microarray technology of a large well-characterised series identifies biologically distinct classes of breast cancer confirming recent cDNA expression analyses. *Int J Cancer* **116**(3): 340-50
- Ambroggi F, Biganzoli E, Querzoli P, Ferretti S, Boracchi P, Alberti S, Marubini E, Nenci I (2006) Molecular subtyping of breast cancer from traditional tumor marker profiles using parallel clustering methods. *Clin Cancer Res* **12**(3 Pt 1): 781-90
- Balslev I, Axelsson CK, Zedeler K, Rasmussen BB, Carstensen B, Mouridsen HT (1994) The Nottingham Prognostic Index applied to 9,149 patients from the studies of the Danish Breast Cancer Cooperative Group (DBCG). *Breast Cancer Res Treat* **32**(3): 281-90
- Beckmann MW, Niederacher D, Schnurch HG, Gusterson BA, Bender HG (1997) Multistep carcinogenesis of breast cancer and tumour heterogeneity. *J Mol Med* **75**(6): 429-39
- Blamey RW, Ellis IO, Pinder SE, Lee AH, Macmillan RD, Morgan DA, Robertson JF, Mitchell MJ, Ball GR, Haybittle JL, Elston CW (2007) Survival of invasive breast cancer according to the Nottingham Prognostic Index in cases diagnosed in 1990-1999. *Eur J Cancer* **43**(10): 1548-55
- Brown J, Jones M, Benson EA (1993) Comment on the Nottingham Prognostic Index. *Breast Cancer Res Treat* **25**(3): 283
- Callagy G, Cattaneo E, Daigo Y, Happerfield L, Bobrow LG, Pharoah PD, Caldas C (2003) Molecular classification of breast carcinomas using tissue microarrays. *Diagn Mol Pathol* **12**(1): 27-34

Carey LA, Perou CM, Livasy CA, Dressler LG, Cowan D, Conway K, Karaca G, Troester MA, Tse CK, Edmiston S, Deming SL, Geradts J, Cheang MC, Nielsen TO, Moorman PG, Earp HS, Millikan RC (2006) Race, breast cancer subtypes, and survival in the Carolina Breast Cancer Study. *Jama* **295**(21): 2492-502

Carlson RW, Brown E, Burstein HJ, Gradishar WJ, Hudis CA, Loprinzi C, Mamounas EP, Perez EA, Pritchard K, Ravdin P, Recht A, Somlo G, Theriault RL, Winer EP, Wolff AC (2006) NCCN Task Force Report: Adjuvant Therapy for Breast Cancer. *J Natl Compr Canc Netw* **4 Suppl 1**: S1-26

Cheang MC, Voduc D, Bajdik C, Leung S, McKinney S, Chia SK, Perou CM, Nielsen TO (2008) Basal-like breast cancer defined by five biomarkers has superior prognostic value than triple-negative phenotype. *Clin Cancer Res* **14**(5): 1368-76

Clark GM (1994) Do we really need prognostic factors for breast cancer? *Breast Cancer Res Treat* **30**(2): 117-26

D'Eredita G, Giardina C, Martellotta M, Natale T, Ferrarese F (2001) Prognostic factors in breast cancer: the predictive value of the Nottingham Prognostic Index in patients with a long-term follow-up that were treated in a single institution. *Eur J Cancer* **37**(5): 591-6

Darb-Esfahani S, Loibl S, Muller BM, Roller M, Denkert C, Komor M, Schluns K, Blohmer JU, Budczies J, Gerber B, Noske A, du Bois A, Weichert W, Jackisch C, Dietel M, Richter K, Kaufmann M, von Minckwitz G (2009) Identification of biology-based breast cancer types with distinct predictive and prognostic features: role of steroid hormone and HER2 receptor expression in patients treated with neoadjuvant anthracycline/taxane-based chemotherapy. *Breast Cancer Res* **11**(5): R69

Dunkler D, Michiels S, Schemper M (2007) Gene expression profiling: does it add predictive accuracy to clinical characteristics in cancer prognosis? *Eur J Cancer* **43**(4): 745-51

Ellis IO, Bell J, Todd JM, Williams M, Dowle C, Robins AR, Elston CW, Blamey RW, Baldwin RW (1987) Evaluation of immunoreactivity with monoclonal antibody NCRC 11 in breast carcinoma. *Br J Cancer* **56**(3): 295-9

Ellis IO, Pinder SE, Lee AH, Elston CW (1999) A critical appraisal of existing classification systems of epithelial hyperplasia and in situ neoplasia of the breast with proposals for future methods of categorization: where are we going? *Semin Diagn Pathol* **16**(3): 202-8

Foulkes WD, Grainge MJ, Rakha EA, Green AR, Ellis IO (2009) Tumor size is an unreliable predictor of prognosis in basal-like breast cancers and does not correlate closely with lymph node status. *Breast Cancer Res Treat* **117**(1): 199-204

Foulkes WD, Reis-Filho JS, Narod SA (2010) Tumor size and survival in breast cancer--a reappraisal. *Nat Rev Clin Oncol* **7**(6): 348-53

Galea MH, Blamey RW, Elston CE, Ellis IO (1992) The Nottingham Prognostic Index in primary breast cancer. *Breast Cancer Res Treat* **22**(3): 207-19

Garcia-Caballero T, Grabau D, Green AR, Gregory J, Schad A, Kohlwes E, Ellis IO, Watts S, Mollerup J (2010) Determination of HER2 amplification in primary breast cancer using dual-colour chromogenic in situ hybridization is comparable to fluorescence in situ hybridization: a European multicentre study involving 168 specimens. *Histopathology* **56**(4): 472-80

Goldhirsch A, Ingle JN, Gelber RD, Coates AS, Thurlimann B, Senn HJ (2009) Thresholds for therapies: highlights of the St Gallen International Expert Consensus on the primary therapy of early breast cancer 2009. *Ann Oncol* **20**(8): 1319-29

Goulding H, Pinder S, Cannon P, et al (1995) A new method for the assessment of oestrogen receptor status on routine formalin-fixed tissue samples. *Hum Pathol* **26**: 291-294

Green AR, Powe DG, Rakha EA, Soria D, Lemetre C, Nolan CC, Barros FF, Macmillan RD, Garibaldi JM, Ball GR, Ellis IO (2013) Identification of key clinical phenotypes of breast cancer using a reduced panel of protein biomarkers. *British journal of cancer* **109**(7): 1886-94

Haybittle JL, Blamey RW, Elston CW, Johnson J, Doyle PJ, Campbell FC, Nicholson RI, Griffiths K (1982) A prognostic index in primary breast cancer. *Br J Cancer* **45**(3): 361-6

Lishman SC, Lakhani SR (1999) Atypical lobular hyperplasia and lobular carcinoma in situ: surgical and molecular pathology. *Histopathology* **35**(3): 195-200

M F (2000) Visualizing Categorical Data. *SAS Institute: Cary, NC*

McCarty KS, Jr., Miller LS, Cox EB, Konrath J, McCarty KS, Sr. (1985) Estrogen receptor analyses. Correlation of biochemical and immunohistochemical methods using monoclonal antireceptor antibodies. *Arch Pathol Lab Med* **109**(8): 716-21

Nielsen TO, Parker JS, Leung S, Voduc D, Ebbert M, Vickery T, Davies SR, Snider J, Stijleman IJ, Reed J, Cheang MC, Mardis ER, Perou CM, Bernard PS, Ellis MJ (2010) A comparison of PAM50 intrinsic subtyping with immunohistochemistry and clinical prognostic factors in tamoxifen-treated estrogen receptor-positive breast cancer. *Clin Cancer Res* **16**(21): 5222-32

Olivotto IA, Bajdik CD, Ravdin PM, Speers CH, Coldman AJ, Norris BD, Davis GJ, Chia SK, Gelmon KA (2005) Population-based validation of the prognostic model ADJUVANT! for early breast cancer. *J Clin Oncol* **23**(12): 2716-25

Paik S, Shak S, Tang G, Kim C, Baker J, Cronin M, Baehner FL, Walker MG, Watson D, Park T, Hiller W, Fisher ER, Wickerham DL, Bryant J, Wolmark N (2004) A multigene assay to predict recurrence of tamoxifen-treated, node-negative breast cancer. *N Engl J Med* **351**(27): 2817-26

Parker JS, Mullins M, Cheang MC, Leung S, Voduc D, Vickery T, Davies S, Fauron C, He X, Hu Z, Quackenbush JF, Stijleman IJ, Palazzo J, Marron JS, Nobel AB, Mardis E, Nielsen TO, Ellis MJ, Perou CM, Bernard PS (2009) Supervised risk predictor of breast cancer based on intrinsic subtypes. *J Clin Oncol* **27**(8): 1160-7

Perou CM, Jeffrey SS, van de Rijn M, Rees CA, Eisen MB, Ross DT, Pergamenschikov A, Williams CF, Zhu SX, Lee JC, Lashkari D, Shalon D, Brown PO, Botstein D (1999) Distinctive gene expression patterns in human mammary epithelial cells and breast cancers. *Proc Natl Acad Sci U S A* **96**(16): 9212-7

Prat A, Cheang MC, Martin M, Parker JS, Carrasco E, Caballero R, Tyldesley S, Gelmon K, Bernard PS, Nielsen TO, Perou CM (2013) Prognostic significance of progesterone receptor-positive tumor cells within immunohistochemically defined luminal A breast cancer. *J Clin Oncol* **31**(2): 203-9

Rakha EA, El-Sayed ME, Lee AH, Elston CW, Grainge MJ, Hodi Z, Blamey RW, Ellis IO (2008) Prognostic significance of Nottingham histologic grade in invasive breast carcinoma. *J Clin Oncol* **26**(19): 3153-8

Rakha EA, Martin S, Lee AH, Morgan D, Pharoah PD, Hodi Z, Macmillan D, Ellis IO (2012) The prognostic significance of lymphovascular invasion in invasive breast carcinoma. *Cancer* **118**(15): 3670-80

Rakha EA, Reis-Filho JS, Baehner F, Dabbs DJ, Decker T, Eusebi V, Fox SB, Ichihara S, Jacquemier J, Lakhani SR, Palacios J, Richardson AL, Schnitt SJ, Schmitt FC, Tan PH, Tse GM, Badve S, Ellis IO (2010) Breast cancer prognostic classification in the molecular era: the role of histological grade. *Breast Cancer Res* **12**(4): 207

Ravdin PM, Siminoff LA, Davis GJ, Mercer MB, Hewlett J, Gerson N, Parker HL (2001) Computer program to assist in making decisions about adjuvant therapy for women with early breast cancer. *J Clin Oncol* **19**(4): 980-91

Soria D, Garibaldi JM, Ambrogi F, Green AR, Powe D, Rakha E, Macmillan RD, Blamey RW, Ball G, Lisboa PJ, Etchells TA, Boracchi P, Biganzoli E, Ellis IO (2010) A methodology to identify consensus classes from clustering algorithms applied to immunohistochemical data from breast cancer patients. *Comput Biol Med* **40**(3): 318-30

Sorlie T, Perou CM, Tibshirani R, Aas T, Geisler S, Johnsen H, Hastie T, Eisen MB, van de Rijn M, Jeffrey SS, Thorsen T, Quist H, Matese JC, Brown PO, Botstein D, Eystein Lonning P, Borresen-Dale AL (2001) Gene expression patterns of breast carcinomas distinguish tumor subclasses with clinical implications. *Proc Natl Acad Sci U S A* **98**(19): 10869-74

van 't Veer LJ, Dai H, van de Vijver MJ, He YD, Hart AA, Bernards R, Friend SH (2003) Expression profiling predicts outcome in breast cancer. *Breast Cancer Res* **5**(1): 57-8

van 't Veer LJ, Dai H, van de Vijver MJ, He YD, Hart AA, Mao M, Peterse HL, van der Kooy K, Marton MJ, Witteveen AT, Schreiber GJ, Kerkhoven RM, Roberts C, Linsley PS, Bernards R, Friend SH (2002) Gene expression profiling predicts clinical outcome of breast cancer. *Nature* **415**(6871): 530-6

van de Vijver MJ, He YD, van't Veer LJ, Dai H, Hart AA, Voskuil DW, Schreiber GJ, Peterse JL, Roberts C, Marton MJ, Parrish M, Atsma D, Witteveen A, Glas A, Delahaye L, van der Velde T, Bartelink H, Rodenhuis S, Rutgers ET, Friend SH, Bernards R (2002) A gene-expression signature as a predictor of survival in breast cancer. *N Engl J Med* **347**(25): 1999-2009

Wolff AC, Hammond ME, Schwartz JN, Hagerty KL, Allred DC, Cote RJ, Dowsett M, Fitzgibbons PL, Hanna WM, Langer A, McShane LM, Paik S, Pegram MD, Perez EA, Press MF, Rhodes A, Sturgeon C, Taube SE, Tubbs R, Vance GH, van de Vijver M, Wheeler TM, Hayes DF (2007) American Society of Clinical Oncology/College of American Pathologists guideline recommendations for human epidermal growth factor receptor 2 testing in breast cancer. *J Clin Oncol* **25**(1): 118-45

Tables

Table 1. Clinicopathological parameters of the seven breast cancer biological classes

Parameter	Biological Class							Cramer's V(M, 2000) (P-value)
	Luminal A (no=370)	Luminal N (no=146)	Luminal B (no=123)	Basal – p53 altered (no=126)	Basal – p53 normal (no=87)	HER2+/ER+ (no=60)	HER2-/ER- (no=85)	
	No (%)	No (%)	No (%)	No (%)	No (%)	No (%)	No (%)	
Size								
<15mm	106 (28.6)	45 (30.8)	27 (22.0)	15 (11.9)	10 (11.5)	6 (10.0)	10 (11.8)	0.199 (< 0.01)
≥15mm	264 (71.4)	101 (69.2)	95 (77.2)	111 (88.1)	77 (88.5)	54 (90.0)	75 (88.2)	
Grade								
1	79 (21.4)	41 (28.1)	20 (16.3)	1 (0.8)	0 (0)	1 (1.7)	1 (1.2)	0.405
2	160 (43.2)	80 (54.8)	48 (39.0)	4 (3.2)	8 (9.2)	13 (21.7)	10 (11.8)	(< 0.01)
3	131 (35.4)	25 (17.1)	54 (43.9)	121 (96.0)	79 (90.8)	46 (76.6)	74 (87.0)	
LN Stage								
1	227 (61.4)	100 (68.5)	69 (56.1)	82 (65.1)	56 (64.4)	29 (48.3)	38 (44.7)	0.116 (< 0.01)
2	120 (32.4)	37 (25.3)	37 (30.1)	33 (26.2)	24 (27.6)	25 (41.7)	33 (38.8)	
3	22 (5.9)	9 (6.2)	15 (12.2)	11 (8.7)	7 (8.0)	6 (10.0)	14 (16.5)	
NPI								
Excellent	54 (14.6)	29 (19.9)	14 (11.4)	0 (0)	0 (0)	1 (1.7)	1 (1.2)	0.203
Good	93 (25.1)	49 (33.6)	21 (17.1)	2 (1.6)	5 (5.7)	5 (8.3)	4 (4.7)	(< 0.01)
Moderate 1	103 (27.8)	34 (23.3)	30 (24.4)	50 (39.7)	22 (25.3)	18 (30.0)	24 (28.2)	
Moderate 2	70 (18.9)	24 (16.4)	35 (28.5)	45 (35.7)	37 (42.5)	18 (30.0)	26 (30.6)	
Poor	39 (10.5)	8 (5.5)	15 (12.2)	20 (15.9)	21 (24.1)	13 (21.7)	19 (22.4)	
Very Poor	8 (2.2)	2 (1.4)	5 (4.1)	7 (5.6)	1 (1.1)	4 (6.7)	9 (10.6)	
Chemotherapy								
No	319 (90.1)	128 (90.8)	111 (94.1)	59 (50)	42 (52.5)	45 (78.9)	47 (58)	0.201
Yes	35 (9.9)	13 (9.2)	7 (5.9)	59 (50)	38 (47.5)	12 (21.1)	34 (42)	(<0.01)
Hormone therapy								
No	185 (52.1)	90 (62.9)	44 (37.6)	105 (84.6)	60 (75)	24(40)	66 (77.6)	0.362
Yes	170 (47.9)	53 (37.1)	73 (62.4)	21 (15.4)	20 (25)	36 (60)	19 (22.4)	(<0.01)

LN=lymph node (stage 1=negative LN, stage 2=1-3 positive LN, stage 3= ≥4 positive LN).

Table 2. The number of patients in NPI+ classes receiving adjuvant systemic therapy

	Endocrine therapy		Chemotherapy	
	Yes	No	Yes	No
Luminal A				
Group 1	88	139	13	213
Group 2	62	18	13	67
Group 3	10	5	5	10
Luminal N				
Group 1	35	71	7	98
Group 2	10	4	4	10
Luminal B				
Group 1	23	29	0	52
Group 2	40	4	6	39
Basal – p53 altered				
Group 1	15	63	37	41
Group 2	4	21	21	5
Basal – p53 normal				
Group 1	11	32	19	24
Group 2	6	19	15	10
HER2+/ER+				
Group 1	17	10	4	23
Group 2	16	8	8	16
HER2+/ER-				
Group 1	18	23	12	29
Group 2	4	11	9	6
Group 3	3	6	7	2

Table 3. Comparison of the traditional NPI with NPI+

Traditional NPI	NPI+
Applicable to all forms of primary invasive breast cancer	Applicable to all forms of primary invasive breast cancer but initial phase of NPI+ classification categorises into one of seven molecular classes
Applies equal weighting of prognostic factors (histological grade, lymph node stage and tumour size) to all types of invasive breast cancer without consideration for molecular classes	Second phase of NPI+ classification uses prognostic factors and weighting relevant to each molecular class. Additional prognostic factors such as lymphovascular and invasion progesterone receptor are included in the formulae
Stratifies in terms of expected prognosis	Stratifies effectively in each molecular class identifying patients whose outcome is as expected following standard therapy versus those who have a suboptimal outcome and may benefit from alternative / additional forms of treatment

Figure legends

Figure 1 - Patient stratification with the classic NPI (left) compared with NPI+ (right) in each of the biological classes. a) class 1 Luminal A, b) class 2 Luminal N, c) class 3 Luminal B, d) class 4 Basal p53 altered e) class 5 Basal p53 normal f) class 6 HER2+/ER+ g) class 7 HER2+/ER-. GPG= good prognostic group, M1 & M2= moderate prognostic groups 1&2, PPG= poor prognostic group, VPPG= very poor prognostic group. Time is shown in months.

Figure 2 - Stratification using NPI+ of those patients who received adjuvant chemotherapy in HER2 positive (regardless of ER expression; left) and HER2 positive ER-negative (right) classes. Time is shown in months.

Figure 3 - Stratification using NPI+ of those patients in the various classes who received adjuvant chemotherapy for groups a) luminal (1+2 +3), b) basal (4+5), c) two basal groups - patients with Basal p53 normal tumours had a good survival overall and no additional stratification could be achieved. d) HER2 (6+7), e) HER2+/ER+ and f) ER+/ER-. There were too few luminal cases receiving chemotherapy to allow development of NPI+ formulae for each of the luminal groups. It can be seen that NPI+ identifies patients with favourable versus poor outcome in all classes assessable apart from the Basal p53 normal class. Time is shown in months.

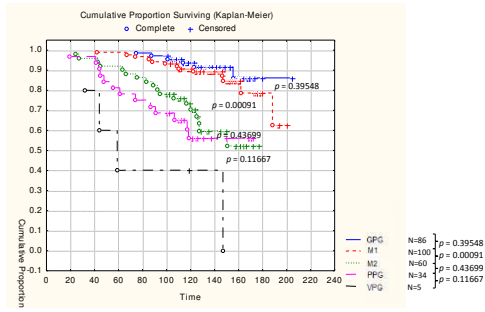
Figure 4 - Survival for each of the classic NPI groups in the whole patient set. Time is shown in months.

Figures

Figure 1

Patient stratification with NPI – Class 1 Luminal A

NPI group 1 (EPG) had to be removed since no uncensored data (dead from breast cancer) was present



Patient stratification with class 1 NPI+ formula – Class 1 Luminal A

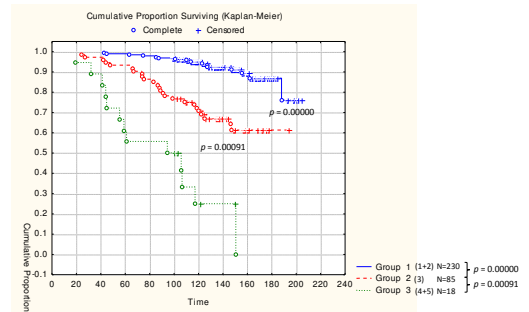
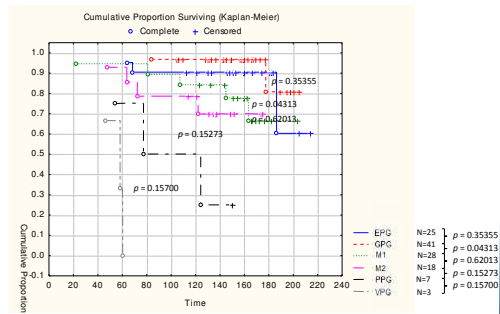


Figure 1a

Patient stratification with NPI classic – Class 2 Luminal N



Patient stratification with class 2 NPI+ formula – Class 2 Luminal N

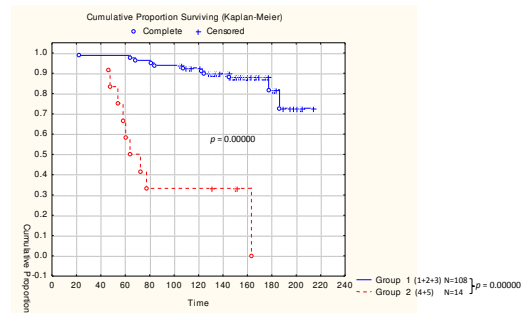
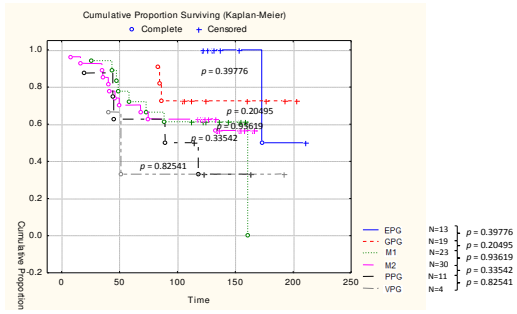


Figure 1b

Patient stratification with NPI classic – Class 3 Luminal B



Patient stratification with class 3 NPI+ formula – Class 3 Luminal B

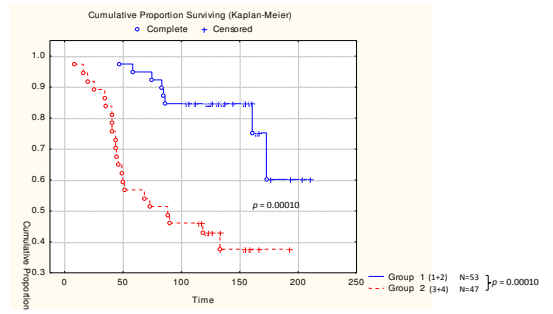
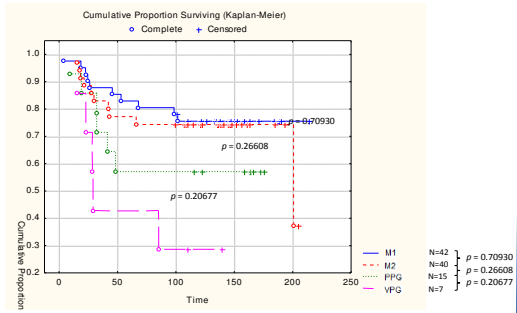


Figure 1c

Patient stratification with NPI classic – Class 4, Basal p53 altered

No group 1 (EPG) case; and group 2 (GPG) had to be removed since no uncensored data (dead from breast cancer) was present



Patient stratification with class 4 NPI+ formula – Class 4, Basal p53 altered

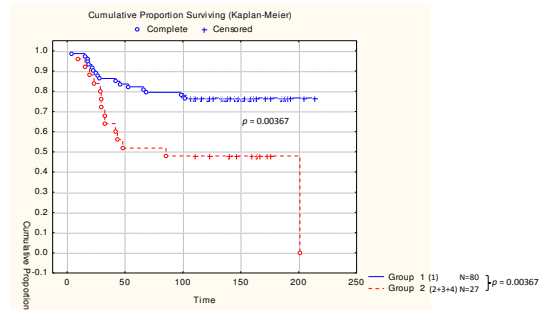
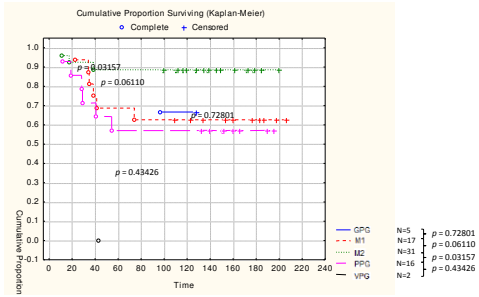


Figure 1d

Patient stratification with NPI classic – Class 5 Basal p53 normal

No group 1 (EPG) case



Patient stratification with class 5 NPI+ formula – Class 5 Basal p53 normal

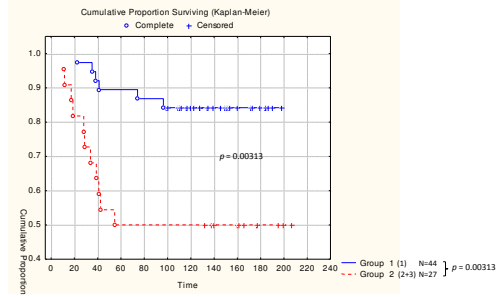
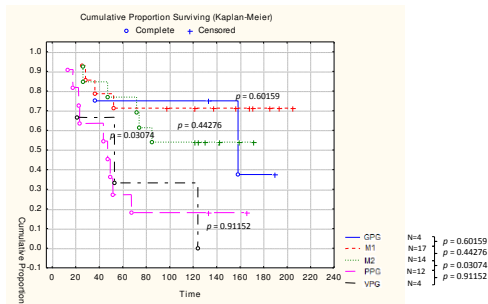


Figure 1e

Patient stratification with NPI classic – Class 6 HER2 positive ER positive

group 1 (EPG) had to be removed since no uncensored data (dead from breast cancer) was present



Patient stratification with class 6 NPI+ formula – Class 6 HER2 positive ER positive

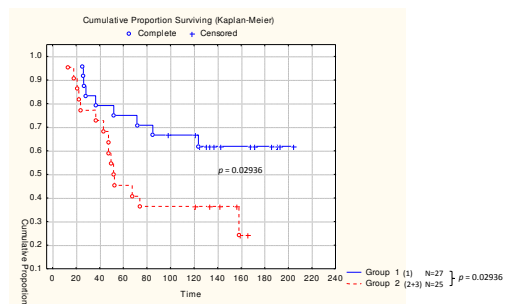
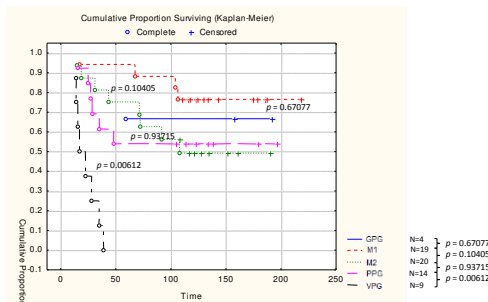


Figure 1f

Patient stratification with NPI classic – Class 7 HER2 positive ER negative

group 1 (EPG) had to be removed since no uncensored data (dead from breast cancer) was present



Patient stratification with class 7 NPI+ formula – Class 7 HER2 positive ER negative

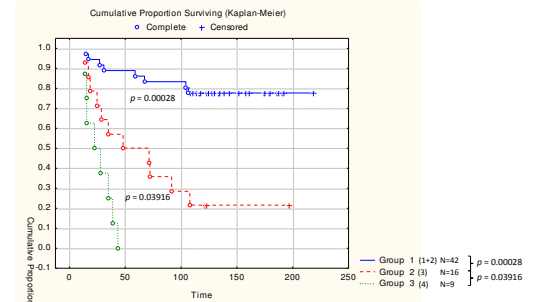
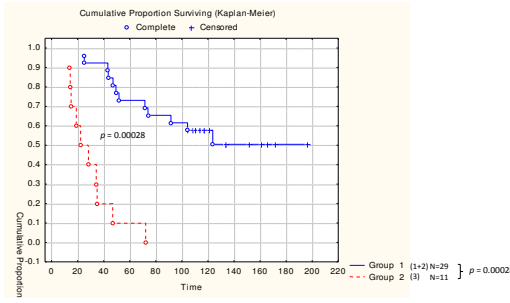


Figure 1g

Figure 2

Patient stratification with NPI+ formula – both HER2 positive groups merged



Patient stratification with NPI+ formula – Her2+ ER-

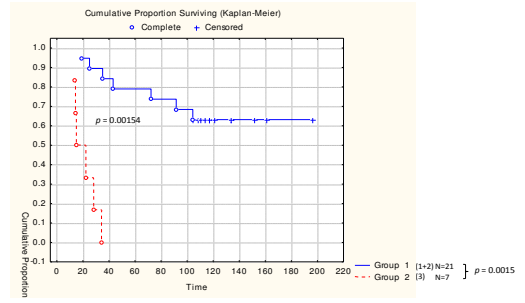


Figure 2

Figure 3a

Patient stratification with NPI+ formula –all Luminal groups merged

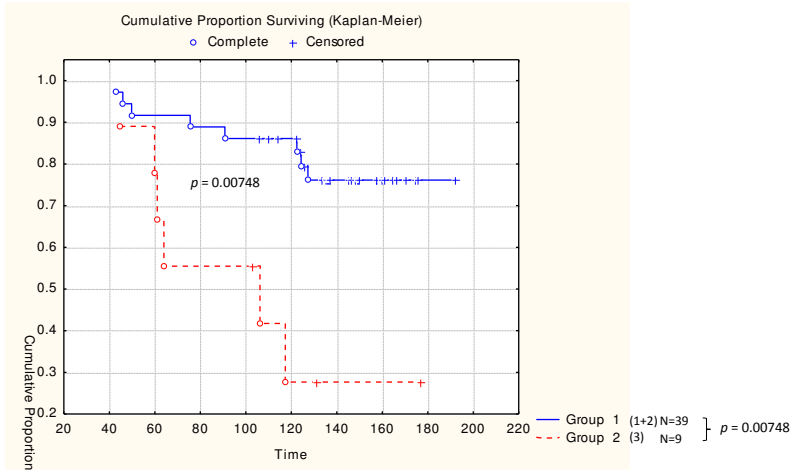


Figure 3b

Patient stratification with NPI+ formula – both Basal groups merged

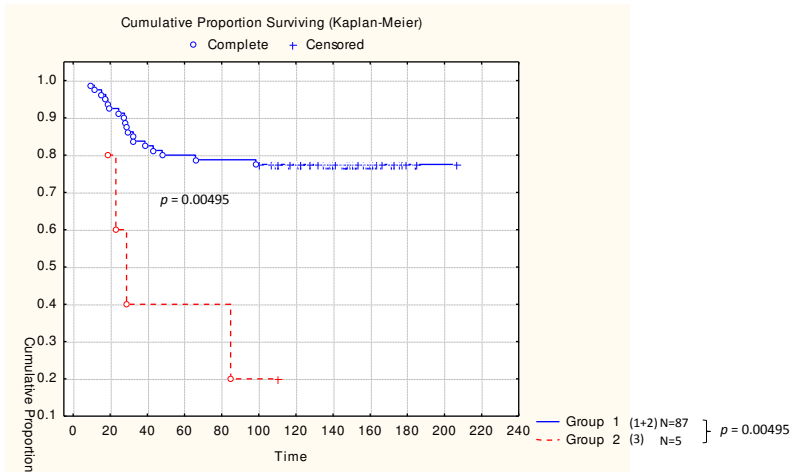


Figure 3c

Patient stratification with NPI+ formula – Basal p53 altered 2 subgroup split according to NPI+ groups and whole Basal p53 normal class

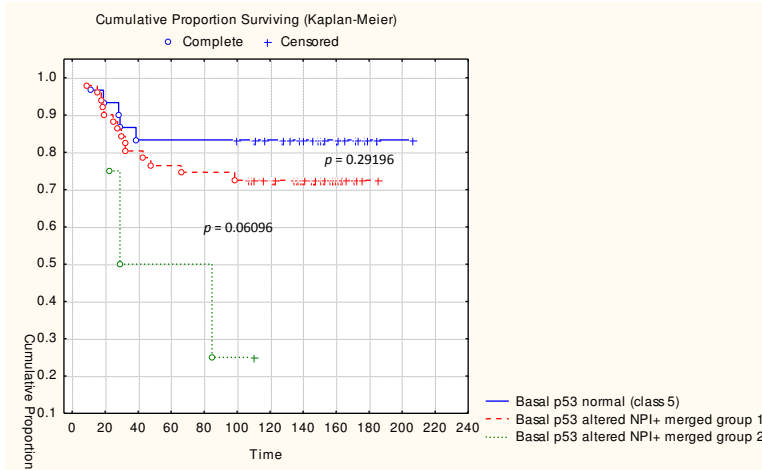


Figure 3d

Patient stratification with NPI+ formula – both HER2 positive groups merged

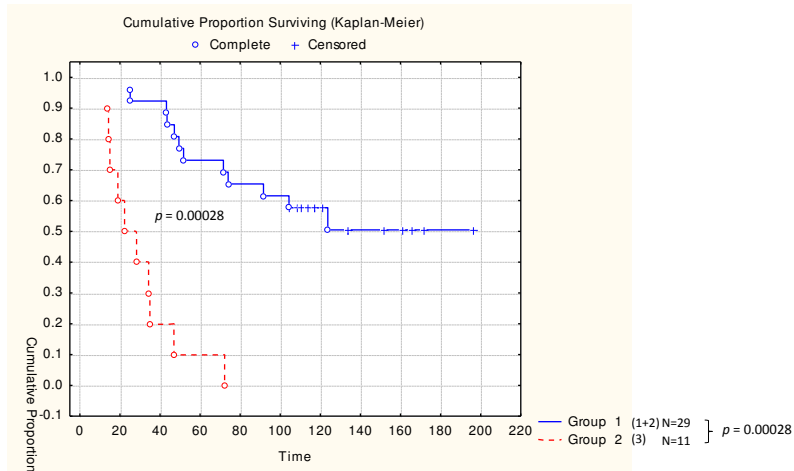


Figure 3e

Patient stratification with NPI+ formula – Her2+ ER+

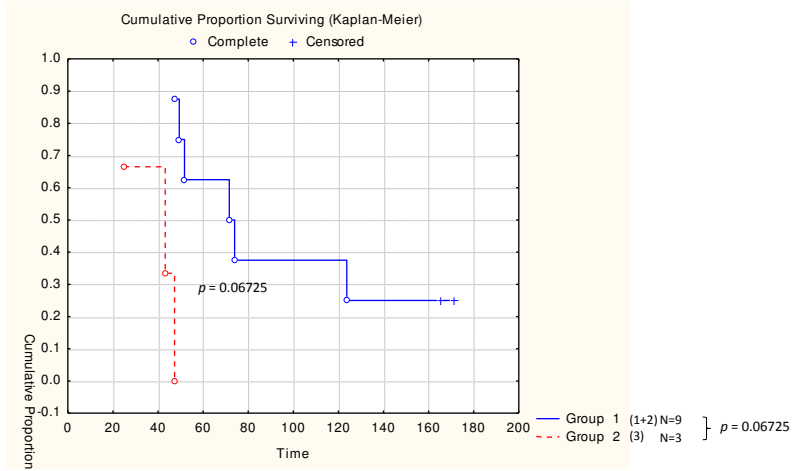
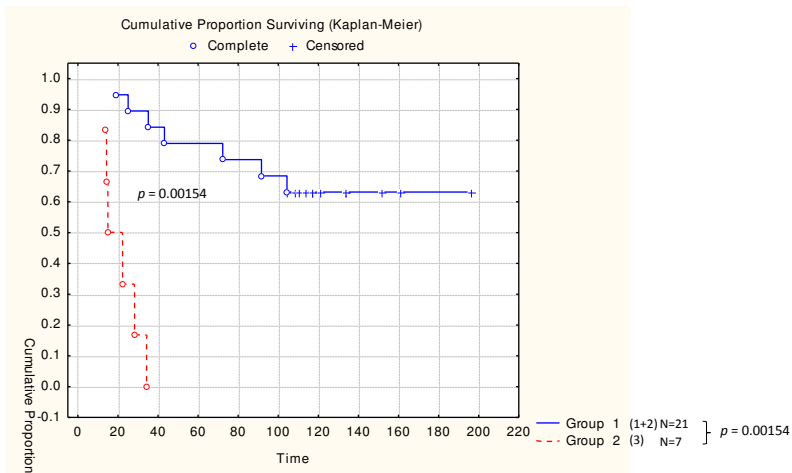


Figure 3f

Patient stratification with NPI+ formula – Her2+ ER-



Survival curves for classic NPI groups on overall population of classes (n=912)

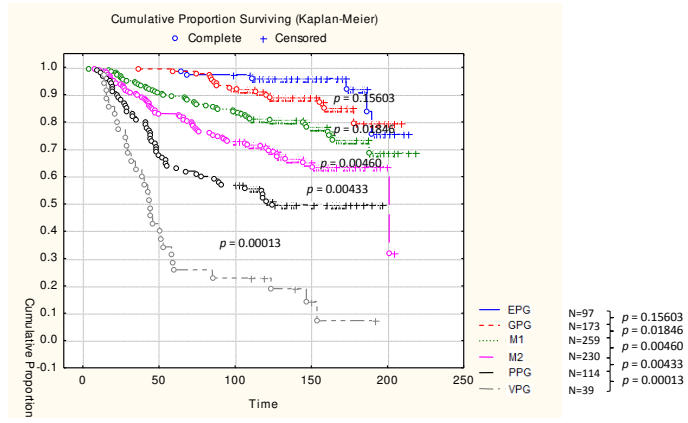


Figure 4.