

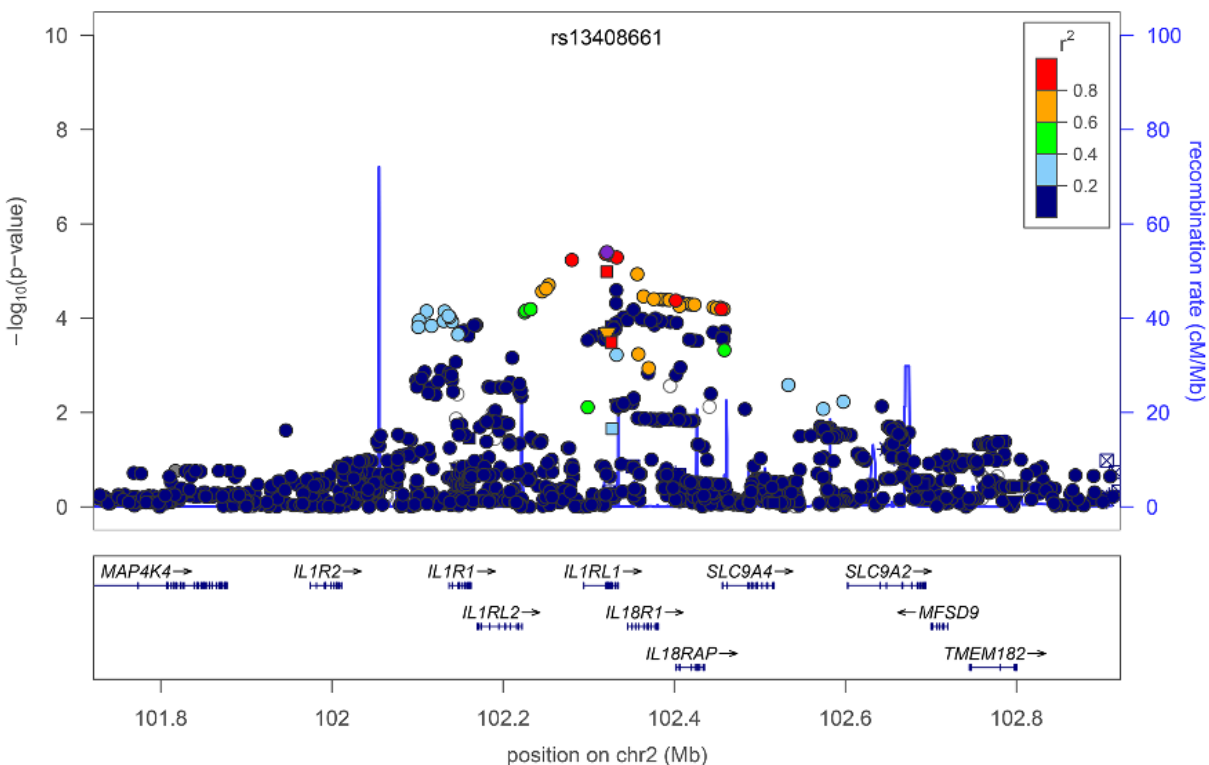
Correction: Genome-Wide Association Studies of Asthma in Population-Based Cohorts Confirm Known and Suggested Loci and Identify an Additional Association near HLA

Adaikalavan Ramasamy, Mikko Kuokkanen, Sailaja Vedantam, Zofia K. Gajdos, Alexsander Couto Alves, Helen N. Lyon, Manuel A. R. Ferreira, David P. Strachan, Jing Hua Zhao, Michael J. Abramson, Matthew A. Brown, Lachlan Coin, Shyamali C. Dharmage, David L. Duffy, Tari Haahtela, Andrew C. Heath, Christer Janson, Mika Kähönen, Kay-Tee Khaw, Jaana Laitinen, Peter Le Souef, Terho Lehtimäki, Australian Asthma Genetics Consortium collaborators, Pamela A. F. Madden, Guy B. Marks, Nicholas G. Martin, Melanie C. Matheson, Cameron D. Palmer, Aarno Palotie, Anneli Pouta, Colin F. Robertson, Jorma Viikari, Elisabeth Widen, Matthias Wjst, Deborah L. Jarvis, Grant W. Montgomery, Philip J. Thompson, Nick Wareham, Johan Eriksson, Pekka Jousilahti, Tarja Laitinen, Juha Pekkanen, Olli T. Raitakari, George T. O'Connor, Veikko Salomaa, Marjo-Riitta Jarvelin, Joel N. Hirschhorn [view less]

Published: March 4, 2013 <http://dx.doi.org/10.1371/annotation/9630862b-4676-4b82-9869-8d8fbb2a2e65>

The forest plots are missing from Figures 1 and 2. The complete images for Figures 1 and 2 can be seen here:

Figure 1:



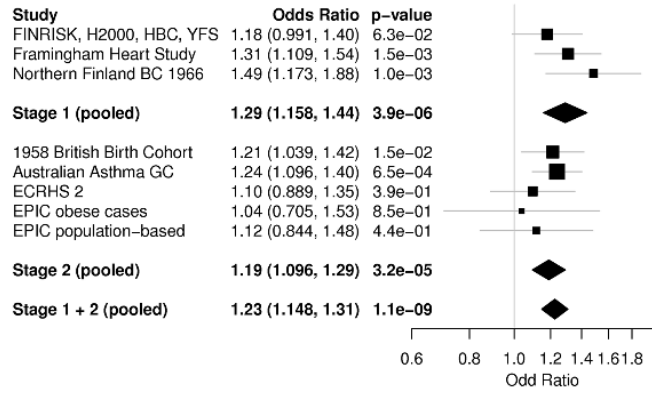
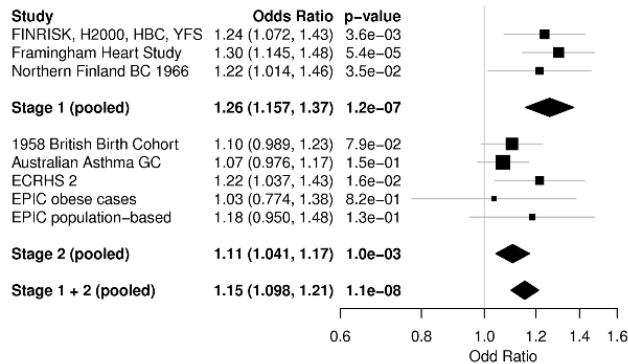
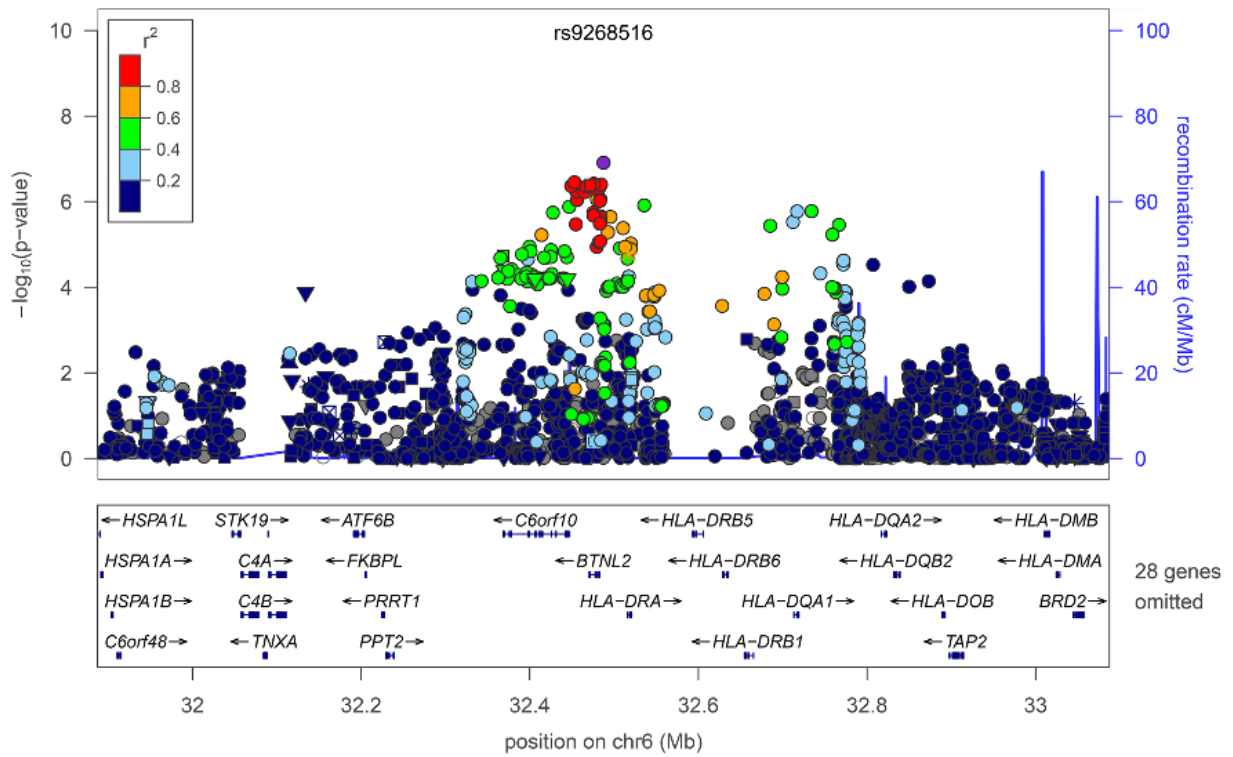


Figure 2:





Citation: Ramasamy A, Kuokkanen M, Vedantam S, Gajdos ZK, Couto Alves A, Lyon HN, et al. (2013) Correction: Genome-Wide Association Studies of Asthma in Population-Based Cohorts Confirm Known and Suggested Loci and Identify an Additional Association near HLA. PLoS ONE 8(3): 10.1371/annotation/9630862b-4676-4b82-9869-8d8fbb2a2e65. doi:10.1371/annotation/9630862b-4676-4b82-9869-8d8fbb2a2e65

Published: March 4, 2013

Copyright: © 2013 . This is an open-access article distributed under the terms of the [Creative Commons Attribution License](#), which permits unrestricted use, distribution, and reproduction in any medium, provided the original author and source are credited.