

Article (refereed) - postprint

Harmens, H.; Norris, D.A.; Sharps, K.; Mills, G.; Alber, R.; Aleksiyenak, Y.; Blum, O.; Cucu-Man, S.-M.; Dam, M.; De Temmerman, L.; Ene, A.; Fernández, J.A.; Martinez-Abaigar, J.; Frontasyeva, M.; Godzik, B.; Jeran, Z.; Lazo, P.; Leblond, S.; Liiv, S.; Magnússon, S.H.; Maňková, B.; Phil Karlsson, G.; Piispanen, J.; Poikolainen, J.; Santamaria, J.M.; Skudnik, M.; Spiric, Z.; Stafilov, T.; Steinnes, E.; Stihi, C.; Suchara, I.; Thöni, L.; Todoran, R.; Yurukova, L.; Zechmeister, H.G. 2015. **Heavy metal and nitrogen concentrations in mosses are declining across Europe whilst some “hotspots” remain in 2010.**

Copyright © 2015 Elsevier Ltd.

This version available <http://nora.nerc.ac.uk/509818/>

NERC has developed NORA to enable users to access research outputs wholly or partially funded by NERC. Copyright and other rights for material on this site are retained by the rights owners. Users should read the terms and conditions of use of this material at <http://nora.nerc.ac.uk/policies.html#access>

NOTICE: this is the author's version of a work that was accepted for publication in *Environmental Pollution*. Changes resulting from the publishing process, such as peer review, editing, corrections, structural formatting, and other quality control mechanisms may not be reflected in this document. Changes may have been made to this work since it was submitted for publication. A definitive version was subsequently published in *Environmental Pollution* (2015), 200. 93-104. [10.1016/j.envpol.2015.01.036](https://doi.org/10.1016/j.envpol.2015.01.036)

www.elsevier.com/

Contact CEH NORA team at
noraceh@ceh.ac.uk

The NERC and CEH trademarks and logos ('the Trademarks') are registered trademarks of NERC in the UK and other countries, and may not be used without the prior written consent of the Trademark owner.

1 **Heavy metal and nitrogen concentrations in mosses are declining across Europe**
2 **whilst some “hotspots” remain in 2010**

3

4 H. Harmens^{a*}, D. A. Norris^a, K. Sharps^a, G. Mills^a, R. Alber^b, Y. Aleksiyenak^c, O.
5 Blum^d, S.-M. Cucu-Man^e, M. Dam^f, L. De Temmerman^g, A. Ene^h, J. A. Fernándezⁱ, J.
6 Martinez-Abaigar^j, M. Frontasyeva^k, B. Godzik^l, Z. Jeran^m, P. Lazoⁿ, S. Leblond^o, S.
7 Liiv^p, S.H. Magnússon^q, B. Maňkiovská^r, G. Pihl Karlsson^s, J. Piispanen^t, J.
8 Poikolainen^t, J.M. Santamaria^u, M. Skudnik^v, Z. Spiric^w, T. Stafilov^x, E. Steinnes^y, C.
9 Stihi^z, I. Suchara^{aa}, L. Thöni^{bb}, R. Todoran^{cc}, L. Yurukova^{dd}, H. G. Zechmeister^{ee}

10

11 ^a Centre for Ecology and Hydrology, Environment Centre Wales, Deiniol Road, Bangor,
12 Gwynedd LL57 2UW, UK. hh@ceh.ac.uk; danor@ceh.ac.uk; katshar@ceh.ac.uk;
13 gmi@ceh.ac.uk

14 ^b Environmental Agency of Bolzano, Laives, Italy. Renate.Alber@provinz.bz.it

15 ^c International Sakharov Environmental University, Minsk, Belarus. beataa@gmail.com

16 ^d National Botanical Garden, Academy of Science of Ukraine, Kiev, Ukraine.

17 blum@nbg.kiev.ua

18 ^e Alexandru Ioan Cuza University of Iasi, Iasi, Romania. sman@uaic.ro

19 ^f Environment Agency, Argir, Faroe Islands. mariad@us.fo

20 ^g Veterinary and Agrochemical Research Centre, Tervuren, Belgium.

21 ludwig.detemmerman@coda-cerva.be

22 ^h Dunarea de Jos University of Galati, Galati, Romania. aene@ugal.ro

23 ⁱ University of Santiago de Compostela, Santiago de Compostela, Spain.

24 jangel.fernandez@usc.es

25 ^j University of La Rioja, Logroño, Spain. javier.martinez@unirioja.es

26 ^k Joint Institute for Nuclear Research, Dubna, Russian Federation.
27 mfrontasyeva@jinr.ru

28 ^l W. Szafer Institute of Botany, Polish Academy of Sciences, Krakow.
29 b.godzik@botany.pl

30 ^m Jožef Stefan Institute, Ljubljana, Slovenia. zvonka.jeran@ijs.si

31 ⁿ University of Tirana, Tirana, Albania. pranveralazo@gmail.com

32 ^o Muséum National d'Histoire Naturelle, Paris, France. sleblond@mnhn.fr

33 ^p Tallinn Botanic Garden, Tallinn, Estonia. Siiri.Liiv@botaanikaad.ee

34 ^q Icelandic Institute of Natural History, Iceland. sigurdur@ni.is

35 ^r Institute of Landscape Ecology, Slovak Academy of Science, Bratislava, Slovakia.
36 bmankov@stonline.sk

37 ^s IVL Swedish Environmental Research Institute, Gothenburg, Sweden.
38 gunilla.pihl.karlsson@ivl.se

39 ^t Finnish Forest Research Institute, Oulu Research Unit, Oulu, Finland.
40 Juha.Piispanen@metla.fi; jarmo.poikolainen@metla.fi

41 ^u University of Navarra, Pamplona, Spain. chusmi@unav.es

42 ^v Slovenian Forestry Institute, Ljubljana, Slovenia. mitja.skudnik@gozdis.si

43 ^w Oikon Ltd., Institute for Applied Ecology, Zagreb, Croatia. zspiric@oikon.hr

44 ^x Ss. Cyril and Methodius University, Skopje, Macedonia. trajcest@pmf.ukim.mk

45 ^y Norwegian University of Science and Technology, Trondheim, Norway.
46 eiliv.steinnes@ntnu.no

47 ^z Valahia University of Targoviste, Targoviste, Romania. stihi@valahia.ro

48 ^{aa} Silva Tarouca Research Institute for Landscape and Ornamental Gardening,
49 Pruhonice, Czech Republic. suchara@vukoz.cz

50

51 ^{bb} FUB-Research Group for Environmental Monitoring, Rapperswil, Switzerland.

52 lotti.thoeni@fub-ag.ch

53 ^{cc} Technical University of Cluj-Napoca, Baia Mare. todoran_radu@yahoo.com

54 ^{dd} Institute of Botany, Bulgarian Academy of Sciences, Sofia, Bulgaria.

55 yur7lild@bio.bas.bg (past away in August 2014)

56 ^{ee} University of Vienna, Department of Botany and Biodiversity Research, Vienna,

57 Austria. Harald.Zechmeister@univie.ac.at

58

59

60 * Corresponding Author: Harry Harmens

61 E-mail address: hh@ceh.ac.uk

62 Tel.: +44-1248-374512

63 Fax: +44-1248-362133

64

65

66 **Abstract**

67

68 In recent decades, naturally growing mosses have been used successfully as biomonitors
69 of atmospheric deposition of heavy metals and nitrogen. Since 1990, the European moss
70 survey has been repeated at five-yearly intervals. In 2010, the lowest concentrations of
71 metals and nitrogen in mosses were generally found in northern Europe, whereas the
72 highest concentrations were observed in (south-)eastern Europe for metals and the
73 central belt for nitrogen. Averaged across Europe, since 1990, the median concentration
74 in mosses has declined the most for lead (77%), followed by vanadium (55%), cadmium
75 (51%), chromium (43%), zinc (34%), nickel (33%), iron (27%), arsenic (21%, since
76 1995), mercury (14%, since 1995) and copper (11%). Between 2005 and 2010, the
77 decline ranged from 6% for copper to 36% for lead; for nitrogen the decline was 5%.
78 Despite the Europe-wide decline, no changes or increases have been observed between
79 2005 and 2010 in some (regions of) countries.

80

81 **Capsule:** Heavy metal pollution remains high particularly in (south-)eastern Europe,
82 whereas nitrogen pollution remains high in the central belt of Europe.

83

84 **Keywords:** biomonitoring; EMEP maps; heavy metals; nitrogen; moss survey

85

86 **1. Introduction**

87 Quantification of heavy metal concentrations in selected moss species provides a
88 surrogate, time-integrated measure of the spatial patterns and temporal trends of heavy
89 metal deposition from the atmosphere to terrestrial ecosystems (Harmens et al., 2007,
90 2008b, 2010). In addition, the nitrogen (N) concentration in mosses provides a good

91 indication of areas exposed to high N deposition across Europe (Harmens et al., 2011,
92 2014). The analysis of elemental concentrations in mosses is easier and cheaper than
93 conventional deposition analysis. Therefore, a much higher sampling density can be
94 achieved than with deposition analysis (see Aas and Breivik, 2012). Despite potential
95 confounding factors contributing to the variation in elemental concentrations in mosses
96 (as discussed elsewhere in more detail e.g. Aboal et al., 2010; Harmens et al., 2008b,
97 2010, 2011, 2014 and references therein), the deposition of cadmium (Cd), lead (Pb)
98 and N has been identified as the primary factor contributing to the spatial variation of
99 concentrations in mosses at the European scale (Holy et al., 2009; Schröder et al.,
100 2010a,b). For Cd and Pb, significant positive correlations were found between the
101 concentration in mosses and the deposition modelled by the European Monitoring and
102 Evaluation Programme (EMEP) for about two thirds or more of the countries
103 participating in the European moss survey since 1990 (Harmens et al., 2012). However,
104 correlations are weaker for mercury (Hg; Schröder et al., 2010b). For N, the relationship
105 between concentrations in mosses and measured or modelled atmospheric deposition
106 seems to be asymptotic, with saturation occurring in mosses in areas with high N
107 deposition (Harmens et al., 2011, 2014). This suggests that the use of mosses as
108 biomonitors of atmospheric deposition is primarily suitable for areas with low to
109 medium N deposition. Nevertheless, the concentration in mosses is still a suitable
110 indicator for identifying areas exposed to high atmospheric N deposition at the
111 European scale.

112 The European moss survey has been repeated at five-yearly intervals since 1990
113 (Harmens et al., 2010, 2011) and the latest survey was conducted in 2010 with 25
114 countries reporting heavy metal concentrations and 15 countries reporting N
115 concentrations in mosses (Harmens et al., 2013c). The European moss survey provides

116 data on concentrations of ten heavy metals (arsenic (As), Cd, chromium (Cr), copper
117 (Cu), iron (Fe), Hg, nickel (Ni), Pb, vanadium (V), zinc (Zn)) in naturally growing
118 mosses, and since 2005 also for the metals aluminium (Al) and antimony (Sb) and for
119 N. In 2010, a pilot study was conducted on the application of mosses as biomonitors of
120 selected persistent organic pollutants (Harmens et al., 2013a, b). The geographical
121 distribution of the moss concentrations of studied POPs reflected atmospheric
122 deposition patterns and the level of urbanisation. Until 2000, the European moss survey
123 has been coordinated by the Nordic Council of Ministers and since 2000 it has been
124 coordinated by the ICP Vegetation (International Cooperative Programme on Effects of
125 Air Pollution on Natural Vegetation and Crops) Coordination Centre at the Centre for
126 Ecology and Hydrology, Bangor, UK. The ICP Vegetation was established in 1987 and
127 is one of seven ICPs/Task Forces of the Working Group on Effects that reports to the
128 United Nations Economic Commission for Europe (UNECE) Long-Range
129 Transboundary Air Pollution (LRTAP) Convention on the effects of atmospheric
130 pollutants on the environment and human health.

131 In the current paper, we report on the spatial patterns in 2010 and temporal
132 trends of concentrations in mosses across Europe for heavy metals since 1990. Addition
133 of the 2010 data has enabled the assessment of temporal trends in the last two decades.
134 As the emissions and depositions of heavy metals (EEA, 2012; Travníkov et al., 2012)
135 and to a lesser extent N (Fagerli et al., 2012) have declined across Europe in recent
136 decades, we hypothesize that the concentrations of these metals in mosses have declined
137 too. For the first time, we assessed similarities in the spatial variation of groups of
138 metals by applying factor analysis at the European scale. Based on studies conducted at
139 national level, we expect some distinct factors to be identified.

140

141 **2. Materials and methods**

142 *Moss sampling*

143 Moss samples of several carpet forming moss species were collected across Europe in
144 2010/2011 (Harmens et al., 2013c); throughout the paper we will refer to this as the
145 survey from 2010. The moss sampling procedure and further preparation of the material
146 for elemental analysis was done according to the guidelines described in the protocol for
147 the 2010 survey (ICP Vegetation, 2010). Figure 1 shows the moss sampling sites across
148 Europe in 2010: ca. 4,400 for heavy metals and ca. 2,400 for N. *Pleurozium schreberi*
149 (Brid.) Mitt was the most frequently sampled species, accounting for ca. 42% of the
150 samples for both heavy metals and N, followed by *Hylocomium splendens* (Hedw.)
151 (23.5% and 15.3% for heavy metals and N, respectively) or *Hypnum cupressiforme*
152 Hedw. (19.6% and 26.9%, respectively), and *Pseudoscleropodium purum* (Hedw.)
153 (7.7% and 7.5%, respectively). Other moss species constituted 7.1% and 8.7% of the
154 mosses sampled for heavy metals and N respectively. In some countries only selected
155 areas were sampled, i.e. in Denmark mosses were collected from the Faroe Islands, in
156 Italy from the Bolzano region, in the Russian Federation from Ivanovo, Kostromskaya
157 and Tikhvin-Lenigradskaya region, in Spain from Galicia, Navarra and Rioja region,
158 and in Ukraine from Donetsk region.

159

160 *Elemental analysis and quality assurance*

161 The concentration of heavy metals and N were determined by a range of analytical
162 techniques (Harmens et al., 2013c). All metal concentrations were expressed as mg kg⁻¹
163 dry weight at 40 °C. As in previous surveys, a quality control exercise was conducted
164 for assessing the analytical performance of the participating laboratories (Steinnes et al.,
165 1997; Harmens et al., 2010). Moss reference material M2, containing elevated

166 concentrations for most metals, and M3, containing background concentrations for most
167 metals (Steinnes et al., 1997), were distributed amongst participating laboratories.
168 Recommended values for the N concentration in M2 and M3 were established in the
169 2005 European moss survey (Harmens et al., 2010). In addition, some laboratories used
170 other certified reference material for quality assurance. For determination of the
171 elemental concentrations in the reference material, laboratories followed the same
172 analytical procedure as used for the collected moss samples. Generally, data obtained
173 indicated acceptable agreement between laboratories. However, outliers were identified
174 for some laboratories for selected metals. This was considered the case when the values
175 were outside the range of two standard deviations (as determined for the 2010 survey)
176 from the mean recommended value for reference material M2 and/or M3 (Steinnes et
177 al., 1997; Harmens et al., 2010). In 2010, the mean values ranged from 85% (for As;
178 followed by 93% for V) to 105% (Sb) of the recommended values for M2 and from
179 92% (Cr) to 113% (As) for M3. For N the mean values of M2 and M3 were 101% and
180 102% of the recommended value respectively. Correction factors were applied when
181 both M2 and M3 values were outliers for a specific metal, and sometimes corrections
182 factors were also applied when only one reference value was identified as an outlier.
183 Although applying correction factors enhanced compatibility of data between countries,
184 it hardly affected the overall European mean and median values for the elements. As a
185 consequence, it did not significantly affect the temporal trends reported for the whole of
186 Europe (Harmens et al., unpublished).

187

188 *Mapping*

189 Maps were produced according to the method described by Harmens et al. (2008a); they
190 show the mean concentration of each metal within individual EMEP grid squares (50

191 km x 50 km). Please note that the designations employed and the presentation of
192 material in this paper do not imply the expression of any opinion whatsoever on the part
193 of the United Nations concerning the legal status of any country, territory, city or area
194 or of its authorities, or concerning the delimitation of its frontiers or boundaries.

195

196 *Statistical analysis*

197 Factor analysis was used to identify how metals grouped together at sampling sites
198 across Europe in 2010. In R (R Core Team, 2014; version 3.1.1) a correlation matrix
199 was created from the logged metal concentrations in mosses. The ‘fa’ function of the R
200 package ‘psych’ was used to perform a factor analysis using orthogonal (varimax)
201 rotation and the maximum likelihood (ml) factoring method. The factor analysis was
202 run using the correlation matrix, therefore variables were standardised (each has a
203 variance of 1). The number of factors was set to three, based on examination of a scree
204 plot. As data for Sb was only collected from 9 out of 25 countries, Sb was excluded
205 from the factor analysis. As not all countries reported data for all metals, there were
206 some missing values in the matrix, which were dealt with using pair-wise deletion, i.e.
207 only missing values per site were removed from the analysis rather than all the
208 measurements for a site.

209 Statistical analysis of temporal trends between 1990 and 2010 across Europe
210 was performed according to the method described by Harmens et al. (2010). For each
211 metal, data were only included for those countries that had determined the concentration
212 for at least four out of the five survey years, although for Hg some countries were also
213 included that had reported data for three out of the last four survey years. For Al, Sb and
214 N, the temporal trend was determined between 2005 and 2010. For each metal, a
215 general linear model including the geometric mean as the response and country and year

216 as factors was then run using R. To account for differences in sample size between
217 countries, the number of samples was included as a weights argument. Tukey tests were
218 used to perform pairwise comparisons between years for each element.

219

220 **3. Results**

221 *Spatial patterns of heavy metals in 2010*

222 Spatial patterns of heavy metal concentrations in mosses in Europe in 2010 are shown
223 in Figures 2 to 4 and median concentrations per country and metal are shown in Figure
224 S1. Additional information per country is provided in Table S1. Please note that when
225 we refer to countries, this does not necessarily mean the whole country but could mean
226 a region(s) within a country if sampling was not across the whole country. The factor
227 analysis identified three main factors explaining 68% of the total variance (Table 1).
228 Factor 1 can possibly be explained by elements associated with mineral particles,
229 mainly windblown dust, and contributes to 39% of the variance. Factor 1 is dominated
230 by Al, Fe, V, Cr, but also includes As and Ni. Factor 2 is probably associated with long-
231 range transport of air pollution and contributes to 18% of the variance. It is dominated
232 by Cd and Pb, but also includes Zn. Factor 3 is dominated by Ni and Cu, and is most
233 likely associated with local pollution sources; factor 3 contributes to 11% of the
234 variance. Hg is not strongly associated with any of the factors, which most likely
235 reflects its global nature and different chemistry compared to other metals, affecting its
236 accumulation in mosses. The spatial variation in the strength of the association of the
237 different elements contributing to each factor is shown in Figure S2.

238 The lowest concentrations of heavy metals in mosses were generally found in
239 northern Europe and the highest concentrations in eastern and south-eastern Europe,
240 resulting in a north-west to south-east gradient for many metals in 2010 (Figures 2 – 4).

241 This is particularly true for metals most likely associated with windblown dust. For Al,
242 Fe, V and Cr, the highest median concentrations in mosses were generally found in
243 Romania, Macedonia, Albania, Ukraine (Donetsk region) and Bulgaria (Figure S1 and
244 Table S1). High Cr concentrations were found in Iceland. For the Faroe Islands (part of
245 Denmark), relatively high concentrations of Al, Fe and V were also reported, but the
246 concentration for Cr was rather low. Cr concentrations were also low in the Ukraine.
247 Arsenic concentrations in mosses were particularly high in Macedonia, Romania,
248 Bulgaria and Rioja (Spain), whereas the lowest concentrations were reported for the
249 Faroe Islands.

250 For Cd, the highest median concentrations in mosses were observed in southern
251 Poland, Slovakia, Croatia, Ukraine (Donetsk region), Belgium and Slovenia (Figure S1
252 and Table S1). However, in Belgium the median value has declined by 38% since 2005.
253 Cd levels were lowest in north-west Scandinavia, Iceland, and western parts of France.
254 Relatively low median values were also observed in Albania, Kosovo and regions in the
255 Russian Federation. The highest Pb concentrations were found in southern Poland,
256 Slovakia, Bulgaria, Kosovo, Ukraine (Donetsk region) and Slovenia, although the
257 median concentration has declined between 31% and 50% in Slovakia, Bulgaria and
258 Slovenia since 2005. Median Pb concentrations in mosses were lowest in northern
259 European countries. In contrast to Cd and Pb, the Zn concentration in mosses has a
260 rather homogenous distribution across Europe, with locally or regionally elevated
261 concentrations being observed. The highest median values were found in Ukraine
262 (Donetsk region), Poland, Belgium, Romania and Kosovo, whereas the lowest median
263 values were reported for Albania, Faroe Islands, Macedonia, Iceland and Bulgaria.

264 Although the highest Cu concentrations in mosses were also found in parts of
265 eastern Europe, i.e. Ukraine (Donetsk region), Slovakia, Russian Federation and

266 Bulgaria, low concentrations were reported in Albania, Kosovo and Macedonia (Figure
267 S1 and Table 1). Ni concentrations were generally high in many parts of (south-)eastern
268 European countries, however, high concentrations were also observed in Iceland and
269 concentrations were low in Belarus. Whereas low concentrations of Cu and Ni were
270 generally observed in northern Europe, locally high concentrations were detected at the
271 Norwegian-Finnish-Russian border in the north due to the presence of strongly polluting
272 Cu-Ni smelters in the Kola Peninsula at the Russian side of the border.

273 Hemispheric transport of Hg appears to result in a rather homogenous spatial
274 pattern of Hg concentration in mosses across Europe. The highest levels of Hg were
275 found in Albania and Macedonia, followed by Italy (Bolzano region), Poland and
276 France. Relatively high levels of Hg were also reported for Norway and the Faroe
277 Islands, and levels have increased since 2005 in some parts of Norway. High
278 concentrations of Sb in mosses in Romania likely indicate a combination of high
279 industrial and road traffic pollution in large areas of the country. High Sb concentrations
280 were also reported for Slovenia and for highly-populated areas with high traffic density
281 in other countries such as north-western France (including Paris), eastern Austria
282 (Lower Inntal) and south-eastern Norway (around Oslo).

283

284 *Temporal trends of heavy metals since 1990 (or later years)*

285 Generally, heavy metal concentrations in mosses have continued to decline at the
286 European scale between 2005 and 2010 (Figures 5 and 6, Tables 2 and 3). Between
287 1990 and 2010, the European average geometric mean concentration has declined
288 significantly ($P < 0.001$) for all metals that were reported for that period. For As, the
289 concentration had declined between 1995 and 2010, although not significantly at $P =$
290 0.05. For Hg, the concentration did not decline significantly between 1995 and 2010 (P

291 = 0.27; Table 2). Please note that the temporal trends between 2005 and 2010 based on
292 countries that participated in both survey years (Table 3) can differ from the trends
293 observed for the same period when comparing long-term trends between 1990 and 2010
294 (Table 2). The latter is based on countries that participated in four out of the five survey
295 years. This generally includes some different and sometimes a lower number of
296 countries in comparison to those participating in both the 2005 and 2010 survey, for
297 example some countries have only participated in the most recent two or three surveys.

298 Between 1990 and 2010, the average median Pb and Cd concentration in mosses
299 across Europe has declined by 77% and 51% respectively (Table 3). These declines are
300 similar to those reported by EMEP for the modelled deposition across Europe, i.e. 74%
301 and 51% for Pb and Cd respectively (Figure 5). The 14% decline in Hg between 1995
302 and 2010 was lower than the decline (27%) in EMEP modelled deposition across
303 Europe. The average median As concentration in mosses has declined by 21% since
304 1995 and the average median concentration in mosses has declined between 11% (Cu)
305 and 57% (V) for all the other metals between 1990 and 2010. For Al and Sb, the decline
306 was 28% and 23% respectively since 2005 (Table 3).

307 Despite the further general decline in heavy metal concentrations in mosses at
308 the European level between 2005 and 2010, no changes or increases have been observed
309 at the (sub-)country level. For example, several countries reported an increase in Cd and
310 Cu, an increase in Hg was found in Macedonia and Italy (Bolzano region), and an
311 increase in Ni was found in Iceland and Croatia. Some clear country-specific results
312 were also observed when comparing the results of the 2005 and 2010 European moss
313 survey. In Belgium, the concentration in mosses has declined considerably for all metals
314 since 2005. The same is true for Slovenia and Macedonia, although the decline has been
315 lower compared with Belgium; for Macedonia, no change (As) or an increase (Hg) were

316 also observed. In France, the concentration of metals associated with windblown dust
317 has declined considerably between 2005 and 2010, particularly in eastern and southern
318 parts of the country. For further details we refer to Harmens et al. (2013c).

319

320 *Nitrogen*

321 The spatial pattern of the N concentration in mosses was similar in 2005 and 2010, with
322 lower values being observed for Finland than the rest of Europe (Figure 7). Generally,
323 high concentrations were found in western, central and south-eastern Europe. The
324 European average median or geometric mean value has not changed significantly since
325 2005 (a decline of 5%; Table 2). Whilst a considerable decline (30%) in the median N
326 concentration in mosses was reported for Slovenia since 2005, an increase was reported
327 for the Czech Republic (19% increase) and France (15%).

328

329 **4. Discussion**

330 *Heavy metals – spatial patterns in 2010 and temporal trends since 1990*

331 As in previous surveys (Harmens et al., 2010), the lowest concentrations of heavy
332 metals in mosses were generally found in northern Europe and the highest
333 concentrations in eastern and south-eastern Europe, resulting in a north-west to south-
334 east gradient. For many metals (but not all) a north-south gradient is present in
335 Scandinavia, reflecting both the higher population density in the south and the
336 contribution of long-range transboundary air pollution from central Europe to the higher
337 concentrations in the south (Steinnes et al., 2011). The three main factors identified in
338 the factor analysis appear to be best explained by 1) windblown dust, 2) long-range
339 transport of air pollution and 3) local pollution sources. While the factor analysis is
340 useful for investigating broad trends in the associations of metals across Europe, the

341 results do not provide any information on variation within individual countries (e.g. due
342 to the presence of local point sources). Some countries have conducted factor analysis in
343 more detail and have identified additional factors for 2010 by including more elements
344 (e.g. Barandovski et al., 2013; Qarri et al., 2014; Špirić et al., 2013).

345 In recent decades, the general decline in emissions and subsequent deposition of
346 heavy metals has resulted in a decrease in the heavy metal concentration in mosses at
347 the European scale. Many emission sources have become cleaner, for example by using
348 filters or other best available technologies, by changing from coal to gas as cleaner
349 emission source or phasing out leaded petrol in many parts of Europe (Travnikov et al.,
350 2012). In addition, some very polluting local emission sources have been shut down in
351 recent decades. Emission abatement policies developed under the Convention on Long-
352 range Transboundary Air Pollution (LTRAP) have targeted the metals Cd, Hg and Pb in
353 the 1998 Aarhus Protocol on Heavy metals; the Protocol was amended in 2012. The
354 implementation of emission abatement policies have contributed significantly to the
355 decline in Cd and Pb pollution in Europe in recent decades. Since 1990, anthropogenic
356 emissions in the EMEP region have declined by 90% for Pb and by approximately 65%
357 for Cd and 60% for Hg. Nevertheless, long-range transboundary transport still
358 contributes significantly to metal deposition in the majority of European countries
359 (Travnikov et al., 2012). Because of the more hemispheric nature of transport of
360 elemental Hg, European emission abatement policies are expected to have less impact
361 on Hg than Cd and Pb deposition due to the contribution from other continents to Hg
362 deposition in Europe. Nowadays, intercontinental transport is estimated to contribute
363 more than 65% to total Hg deposition in the EMEP region (Travnikov et al., 2012).
364 Therefore, both regional and global efforts are needed to reduce Hg pollution. Hence, in
365 October 2013, the Minamata Convention on Mercury (a global Convention) was

366 adopted by the Governing Council of the United Nations Environment Programme
367 (UNEP). For Hg, large areas in Europe are still at risk of high critical loads exceedance
368 for ecotoxicological effect. The risk of exceedance is lower for Pb, but exceedance still
369 occurs in large areas of Europe, and the risk of exceedance is almost non-existent for Cd
370 (Slootweg et al., 2010).

371 For Cd and Pb, the decline in the concentration in mosses since 1990 (77% and
372 51% respectively) was in good agreement with the decline in atmospheric deposition
373 modelled by EMEP across Europe (74% and 51% respectively; Travnikov et al., 2012).
374 For Hg, the decline in concentration in mosses (14%) was less than the decline in
375 atmospheric deposition modelled by EMEP across Europe (27%). Similar results were
376 found when the comparison of temporal trends for modelled deposition and
377 concentrations in mosses was limited to the areas of Europe where countries reported
378 concentrations in mosses in all survey years since 1990 (1995 for Hg; Ilyin et al., 2014).
379 Previous analyses on the European scale have shown that EMEP modelled deposition is
380 the main predictor for concentrations in mosses for Cd and Pb but not for Hg (Holy et
381 al., 2009; Schröder et al., 2010b). It should be noted, however, that correlations between
382 modelled deposition and concentrations in mosses for Cd and Pb are country-specific
383 (Harmens et al., 2012; Ilyin et al., 2014). The lack of a strong correlation between
384 modelled deposition and concentration in mosses for Hg may relate to the specific
385 chemistry of Hg (Harmens et al., 2010, and references therein). Reduction of heavy
386 metal pollution levels was accompanied by changes in the key source categories of both
387 emissions and resulting deposition. For example, the prevailing contribution of road
388 transport for Pb and metal production for Cd in 1990 were replaced by industrial and
389 non-industrial combustion in 2010. Changes in sectoral composition of Hg emissions
390 were less significant (Travnikov et al., 2012).

391 In agreement with the moss data, emissions for Cu have changed (0.5%) the
392 least between 1990 and 2010 in Europe (EEA, 2012). For other metals, the decline in
393 emissions between 1990 (1995 for As) and 2010 has been higher than the decline in
394 concentrations in mosses in Europe, i.e. 30%, 73%, 59% and 43% for As, Cr, Ni and Zn
395 respectively (EEA, 2012). The decline in deposition of heavy metals is generally lower
396 than the decline in emissions possibly due to the contribution of wind-blown dust to the
397 deposition of metals (Ilyin et al., 2007; Travnikov et al., 2012). Elevated fluxes of dust
398 suspension are generally calculated for southern Europe and agricultural regions in
399 southeastern and Eastern Europe (Ilyin et al., 2007). Whilst anthropogenic emissions of
400 metals have generally declined in Europe, the relative contribution from wind re-
401 suspension to metal deposition has increased between 1990 and 2010. Wind-blown dust
402 consists of two components: the first component represents re-suspension of mineral
403 dust with a natural content of metal that corresponds to the average metal concentration
404 in the Earth' crust. This fraction tends to be high for metals associated with the Earth'
405 crust, such as Al and Fe. The second component accounts for the legacy contribution of
406 metals accumulated in soil and roadside dust due to previous (historic) atmospheric
407 deposition. This fraction tends to be high for metals such as Cd and Pb (Ilyin et al.,
408 2007). It should be noted that large uncertainties are associated with the legacy
409 contribution of metals in soils and therefore the contribution of wind-blown dust to the
410 calculated total deposition of metals. It appears that the currently high concentrations of
411 metals in mosses in parts of eastern and south-eastern Europe are the result of a
412 combination of the presence of still high local anthropogenic pollution sources, a high
413 legacy component of heavy metals in windblown dust and the presence of mineral soils
414 of some of these countries (Ilyin et al., 2007). For essential plant micronutrients such as
415 Cu, Fe and Zn, background concentrations will be present in mosses due to internal

416 cycling from old to new growing tissue, which also contributes to a lower decline in
417 concentration in mosses compared to emissions.

418 Even in times of generally decreasing metal emission and deposition across
419 Europe, temporal trends are different for different geographical scales, i.e. temporal
420 trends are country or region-specific with no changes or even increases in metal
421 concentrations in mosses being found (Harmens et al., 2010). Whereas many areas in a
422 country have shown a decline, areas in the same or another country have shown no
423 change or a considerable increase in metal concentrations in mosses since the previous
424 survey in 2005 (Harmens et al., 2013c). Potentially confounding factors affecting
425 temporal trends of metal concentrations in mosses at the country and European scale
426 were discussed in more detail previously (Harmens et al., 2008b; 2010).

427

428 *Nitrogen – spatial patterns in 2010 and temporal trends since 2005*

429 For N, hardly any changes were observed in the N concentration in mosses since 2005.
430 The non-significant decline (5%) in the European average median N concentration in
431 mosses is in agreement with the 7% decline reported by EMEP for modelled total N
432 deposition in the EU27 since 2005 (Fagerli et al., 2012). As in 2005, areas most exposed
433 to high N deposition are located in western and central Europe. However, the magnitude
434 of exposure in many northern, eastern and Mediterranean countries could not be
435 assessed via the survey as those countries did not report on N concentrations in mosses.
436 Whereas Germany participated in the 2005 survey, it did not participate in the 2010
437 survey, leaving a big gap in the data for central Europe. The relationship between site-
438 specific N concentrations in mosses and modelled or measured deposition starts to show
439 saturation at deposition rates of ca. 15 (Harmens et al., 2011) or 20 kg ha⁻¹ y⁻¹ (Harmens
440 et al., 2014). Although this makes it difficult to assess the magnitude of exposure in

441 areas with medium to high N deposition, the moss technique still allows the
442 identification of the areas potentially most exposed. Some country-specific changes
443 since 2005 are confounded by inclusion of data for more sites in 2010. For example, the
444 relatively high decline in the median N concentration in mosses in Slovenia between
445 2005 and 2010 can be explained by including additional sampling sites (only about one-
446 third of the sampling sites were the same in 2005 and 2010) and careful sampling to
447 avoid the influence of canopy drip from trees as much as possible in the highly forested
448 area of Slovenia. Generally, mosses affected by canopy drip have a higher N due to the
449 higher N concentration in throughfall deposition (Kluge, 2013, Skudnik, 2014). The
450 reported increase in France was confounded by the fact that the N concentration in
451 mosses was determined at 88 sites in 2005, whereas it was determined at 442 sites in
452 2010.

453

454 **Conclusions**

455 The following conclusions can be drawn:

- 456 • Generally, areas in eastern and south-eastern European remain exposed to high
457 levels of heavy metal pollution, whereas areas in the central belt of Europe remain
458 exposed to high levels of N pollution. Participation of countries from these regions
459 in future moss surveys is therefore highly recommended to monitor changes in the
460 future.
- 461 • The implementation of air pollution abatement strategies in Europe in recent
462 decades has contributed considerably to the general decline in heavy metal
463 concentrations in Europe. The slower implementation of air pollution abatement
464 policies in parts of eastern and south-eastern Europe has likely contributed to this
465 area still having high levels of heavy metal pollution.

466 • Despite the general European decline in concentrations in mosses, country and
467 region-specific temporal trends were observed, including no changes or increases in
468 recent surveys.

469

470 **Acknowledgement**

471 We thank the United Kingdom Department for Environment, Food and Rural
472 Affairs (Defra; contract AQ0810 and AQ0833), the UNECE (Trust Fund) and the
473 Natural Environment Research Council (NERC) for funding the ICP Vegetation
474 Programme Coordination Centre at CEH Bangor, UK. The contributions of many more
475 scientists in 2010, additional scientists and countries in previous European surveys
476 (1990 – 2000) and all the funding bodies in each country are gratefully acknowledged
477 (for full details see Rühling (1994), Rühling and Steinnes (1998), Buse et al. (2003) and
478 Harmens et al. (2008a, 2013c)). We thank Ilia Ilyin (EMEP/MSC-East) for making
479 modelled heavy metal deposition data available, and David Cooper (CEH Bangor) for
480 statistical advice. Finally, we would like to dedicate this paper to Prof. Dr. Lilyana
481 Yurukova, who sadly passed away in August 2014. Her contributions to the European
482 moss survey are greatly appreciated and her participation in future surveys will sadly be
483 missed.

484

485 **References**

486 Aas, W., Breivik, K., 2012. Heavy metals and POP measurements 2010. EMEP/CCC-
487 Report 3/2012. Norwegian Institute for Air Research, Kjeller, Norway.
488 <http://www.nilu.no/projects/ccc/reports/cccr3-2012.pdf>

489 Aboal, J.R., Fernández, J.A., Boquete, T., Carballeira, A., 2010. Is it possible to
490 estimate atmospheric deposition of heavy metals by analysis of terrestrial
491 mosses? *Science of the Total Environment* 408: 6291-6297.

492 Barandovski, L., Stafilov, T., Šajin, R., Frontasyeva, M.V., Bačeva, K., 2013. Air
493 pollution study in Macedonia using a moss biomonitoring technique, ICP-AES
494 and AAS. *Macedonian Journal of Chemistry and Chemical Engineering* 32: 89-
495 107.

496 Buse, A., Norris, D., Harmens, H., Büker, P., Ashenden, T., Mills, G., 2003. Heavy
497 metals in European mosses: 2000/2001 survey. ICP Vegetation Programme
498 Coordination Centre, Centre for Ecology & Hydrology, Bangor, UK.
499 <http://icpvegetation.ceh.ac.uk>

500 EEA, 2012. European Union emission inventory report 1990–2010 under the UNECE
501 Convention on Long-range Transboundary Air Pollution (LRTAP). European
502 Environment Agency Technical report No 8/2012.
503 <http://www.eea.europa.eu/publications/eu-emission-inventory-report-1990-2010>

504 Fagerli, H., Gauss, M., Steensen, B.M., Benedictow, A.C., Hjellbrekke, A.-G., 2012.
505 EMEP/MSC-W model performance for acidifying and eutrophying components
506 and photo-oxidants in 2010. Supplementary material to EMEP Status Report
507 1/2012. http://emep.int/publ/reports/2012/sup_status_report_1_2012.pdf.

508 Harmens, H., Foan, L., Simon, V., Mills, G., 2013a. Terrestrial mosses as biomonitors
509 of atmospheric POPs pollution: A review. *Environmental Pollution* 173: 245-
510 254.

511 Harmens, H., Ilyin, I., Mills, G., Aboal, J.R., Alber, R., Blum, O., Coşkun, M., De
512 Temmerman, L., Fernández, J.A., Figueira, R., Frontasyeva, M., Godzik, B.,
513 Goltsova, N., Jeran, Z., Korzekwa, S., Kubin, E., Kvietkus, K., Leblond, S.,

514 Liiv, S., Magnússon, S.H., Maňková, B., Nikodemus, O., Pesch, R.,
515 Poikolainen, J., Radnović, D., Rühling, Å., Santamaria, J.M., Schröder, W.,
516 Spiric, Z., Stafilov, T., Steinnes, E., Suchara, I., Tabor, G., Thöni, L., Turcsányi,
517 G., Yurukova, L., Zechmeister, H.G., 2012. Country-specific correlations across
518 Europe between modelled atmospheric cadmium and lead deposition and
519 concentrations in mosses. *Environmental Pollution* 166: 1-9.

520 Harmens, H., Mills, G., Hayes, F., Norris, D. and the participants of the ICP Vegetation,
521 2013b. Air pollution and vegetation. ICP Vegetation annual report 2012/2013.
522 ICP Vegetation Programme Coordination Centre, Centre for Ecology &
523 Hydrology Bangor, UK. <http://icpvegetation.ceh.ac.uk>

524 Harmens, H., Norris, D. and the participants of the moss survey, 2008a. Spatial and
525 temporal trends in heavy metal accumulation in mosses in Europe (1990-2005).
526 ICP Vegetation Programme Coordination Centre, Centre for Ecology &
527 Hydrology, Bangor, UK. <http://icpvegetation.ceh.ac.uk>

528 Harmens, H., Norris, D. A., Cooper, D.M., Mills, G., Steinnes E., Kubin, E., Thöni, L.,
529 Aboal, J.R., Alber, R., Carballeira, A., Coşkun, M., De Temmerman, L.,
530 Frolova, M., González-Miqueo, L., Jeran, Z., Leblond S., Liiv, S., Maňková,
531 B., Pesch, R., Poikolainen, J., Rühling, Å., Santamaria, J. M., Simonè, P.,
532 Schröder, W., Suchara, I., Yurukova, L., Zechmeister, H. G., 2011. Nitrogen
533 concentrations in mosses indicate the spatial distribution of atmospheric nitrogen
534 deposition in Europe. *Environmental Pollution* 159: 2852-2860.

535 Harmens, H., Norris, D.A., Koerber, G.R., Buse, A., Steinnes, E., Rühling, Å., 2007.
536 Temporal trends in the concentration of arsenic, chromium, copper, iron, nickel,
537 vanadium and zinc in mosses across Europe between 1990 and 2000.
538 *Atmospheric Environment* 41, 6673-6687.

539 Harmens, H., Norris, D.A., Koerber, G.R., Buse, A., Steinnes, E., Rühling, Å., 2008b.
540 Temporal trends (1990 – 2000) in the concentration of cadmium, lead and
541 mercury in mosses across Europe. *Environmental Pollution* 151, 368-376.

542 Harmens, H., Norris, D., Mills, G., and the participants of the moss survey, 2013c.
543 Heavy metals and nitrogen in mosses: spatial patterns in 2010/2011 and long-
544 term temporal trends in Europe. ICP Vegetation Programme Coordination
545 Centre, Centre for Ecology & Hydrology, Bangor, UK.
546 <http://icpvegetation.ceh.ac.uk>

547 Harmens, H., Norris, D.A., Steinnes, E., Kubin, E., Piispanen, J., Alber, R.,
548 Aleksiyenak, Y., Blum, O., Coşkun, M., Dam, M., De Temmerman, L.,
549 Fernández, J.A., Frolova, M., Frontasyeva, M., González-Miqueo, L.,
550 Grodzińska, K., Jeran, Z., Korzekwa, S., Krmar, M., Kvietskus, K., Leblond, S.,
551 Liiv, S., Magnússon, S.H., Maňkiovská, B., Pesch, R., Rühling, Å., Santamaria,
552 J.M., Schröder, W., Spiric, Z., Suchara, I., Thöni, L., Urumov, V., Yurukova, L.,
553 Zechmeister, H.G., 2010. Mosses as biomonitors of atmospheric heavy metal
554 deposition: spatial and temporal trends in Europe. *Environmental Pollution* 158:
555 3144-3156.

556 Harmens, H., Schnyder, E., Thöni, L., Cooper, D.M., Mills, G., Leblond, S., Mohr, K.,
557 Poikolainen, J., Santamaria, J., Skudnik, M., Zechmeister, H.G., Lindroos, A.-J.,
558 Hanus-İllnar, A., 2014. Relationship between site-specific nitrogen
559 concentrations in mosses and measured wet bulk atmospheric nitrogen
560 deposition across Europe. *Environmental Pollution* 194: 50 - 59.

561 Holy, M., Pesch, R., Schröder, W., Harmens, H., Ilyin, I., Alber, R., Aleksiyenak, Y.,
562 Blum, O., Coşkun, M., Dam, M., De Temmerman, L., Fedorets, N., Figueira, R.,
563 Frolova, M., Frontasyeva, M., Goltsova, N., González Miqueo, L., Grodzińska,

564 K., Jeran, Z., Korzekwa, S., Krmar, M., Kubin, E., Kvietkus, K., Larsen, M.,
565 Leblond, S., Liiv, S., Magnússon, S., Maňková, B., Mocanu, R., Piispanen, J.,
566 Rühling, Å., Santamaria, J., Steinnes, E., Suchara, I., Thöni, L., Turcsányi, G.,
567 Urumov, V., Wolterbeek, H.T., Yurukova, L., Zechmeister, H.G., 2009. First
568 thorough identification of factors associated with Cd, Hg and Pb concentrations
569 in mosses sampled in the European Surveys 1990, 1995, 2000 and 2005. Journal
570 of Atmospheric Chemistry 63: 109-124.

571 ICP Vegetation, 2010. Heavy metals in European mosses: 2010 survey. Monitoring
572 manual. ICP Vegetation Programme Coordination Centre, Centre for Ecology &
573 Hydrology, Bangor, UK. <http://icpvegetation.ceh.ac.uk>

574 Ilyin, I., Rozovskaya, O., Travnikov, O., Aas, W., 2007. Heavy metals: transboundary
575 pollution of the environment. EMEP Status Report 2/2007.
576 http://www.msceast.org/reports/2_2007.pdf

577 Ilyin, I., Rozovskaya, O., Travnikov, O., Varygina, M., Aas, W., 2014. Heavy metal
578 transboundary pollution of the environment. EMEP/MSC-E Status Report
579 2/2014. Meteorological Synthesizing Centre - East, Moscow, Russian Federation
580 and Chemical Co-ordinating Centre, NILU, Kjeller, Norway.
581 http://www.msceast.org/reports/2_2014.pdf

582 Kluge, M., Pesch, R., Schröder, W., Hoffmann, A., 2013. Accounting for canopy drip
583 effects of spatiotemporal trends of concentrations of N in mosses, atmospheric N
584 depositions and critical load exceedances: a case study from North-Western
585 Germany. Environmental Science Europe 25, 26.

586 Qarri, F., Lazo, P., Stafilov, T., Frontasyeva, M., Harmens, H., Bektashi, L., Baceva, K.,
587 Goryainova, Z., 2014. Multi-elements atmospheric deposition study in Albania.
588 Environmental Science and Pollution Research 21: 2506-2518.

589 R Core Team, 2014. R: A language and environment for statistical computing. R
590 Foundation for Statistical Computing, Vienna, Austria. [http://www.R-](http://www.R-project.org/)
591 [project.org/](http://www.R-project.org/)

592 Rühling, Å., 1994. Atmospheric heavy metal deposition in Europe – estimation based
593 on moss analysis. NORD 1994:9. Nordic Council of Ministers, Copenhagen,
594 Denmark.

595 Rühling, Å., Steinnes, E., 1998. Atmospheric heavy metal deposition in Europe 1995-
596 1996. NORD 1998:15, Nordic Council of Ministers, Copenhagen, Denmark.

597 Schröder, W., Holy, M., Pesch, R., Harmens, H., Fagerli, H., Alber, R., Coşkun, M., De
598 Temmerman, L., Frolova, M., González-Miqueo, L., Jeran, Z., Kubin, E.,
599 Leblond, S., Liiv, S., Maňková, B., Piispanen, J., Santamaría, J.M., Simonè, P.,
600 Suchara, I., Yurukova, L., Thöni, L., Zechmeister, H.G., 2010a. First Europe-
601 wide correlation analysis identifying factors best explaining the total nitrogen
602 concentration in mosses. Atmospheric Environment 44: 3485-3491.

603 Schröder, W., Holy, M., Pesch, R., Harmens, H., Ilyin, I., Steinnes, E., Alber, R.,
604 Aleksiyenak, Y., Blum, O., Coşkun, M., Dam, M., De Temmerman, L.,
605 Frolova, M., Frontasyeva, M., González-Miqueo, L., Grodzińska, K., Jeran, Z.,
606 Korzekwa, S., Krmar, M., Kubin, E., Kviatkus, K., Leblond, S., Liiv, S.,
607 Magnússon, S., Maňková, B., Piispanen, J., Rühling, Å., Santamaria, J., Spiric,
608 Z., Suchara, I., Thöni, L., Urumov, V., Yurukova, L., Zechmeister, H.G., 2010b.
609 Are cadmium, lead and mercury concentrations in mosses across Europe
610 primarily determined by atmospheric deposition of these metals? Journal of
611 Soils and Sediments 10: 1572-1584.

612 Skudnik, M., Jeran, Z., Batic, F., Simončič, P., Lojen, S., Kastelec, D., 2014. Influence
613 of canopy drip on the indicative N, S and d15N content in moss *Hypnum*
614 *cupressiforme*. Environmental Pollution 190, 27-35.

615 Slootweg, J., Hettelingh, J.-P., Posch, M., 2014. Critical loads of heavy metals and their
616 exceedances. In: Slootweg, J., Posch, M., Hettelingh, J.-P. (Eds.). Progress in the
617 modelling of critical thresholds and dynamic modelling, including impacts on
618 vegetation in Europe. CCE Status Report 2010, Coordination Centre for Effect,
619 RIVM, Bilthoven, The Netherlands, pp. 91-100. [26](http://wge-
620 <u>cce.org/Publications/CCE_Status_Reports/Status_Report_2010</u></p><p>621 Špirić, Z., Vučković, I., Stafilov, T., Kušan, V., Frontasyeva, M., 2013. Air pollution
622 study in Croatia using moss biomonitoring and ICP-AES and AAS analytical
623 techniques. Archives of Environmental Contamination and Toxicology 65: 33 –
624 46.</p><p>625 Steinnes, E., Berg, T., Uggerud, H.T., 2011. Three decades of atmospheric metal
626 deposition in Norway as evident from analysis of moss samples. Science of the
627 Total Environment 412-413: 351-358.</p><p>628 Steinnes, E., Rühling, Å., Lippo, H., Mäkinen, A., 1997. Reference material for large-
629 scale metal deposition surveys. Accreditation and Quality Assurance 2, 243-249.</p><p>630 Travnikov, O., Ilyin, I., Rozovskaya, O., Varygina, M., Aas, W., Uggerud, H.T.,
631 Mareckova, K., Wankmueller, R., 2012. Long-term changes of heavy metal
632 transboundary pollution of the environment (1990-2010). EMEP Status Report
633 2/2012.</p><p>634</p></div><div data-bbox=)

635 **Figure legends**

636 **Figure 1.** Sites where mosses were sampled for heavy metals (left) and nitrogen
637 analysis (right).

638

639 **Figure 2.** Mean heavy metal concentration in mosses per EMEP grid square (50 km x
640 50 km) in Europe in 2010 for aluminium (Al), antimony (Sb), arsenic (As) and
641 cadmium (Cd).

642

643 **Figure 3.** Mean heavy metal concentration in mosses per EMEP grid square (50 km x
644 50 km) in Europe in 2010 for chromium (Cr), copper (Cu), iron (Fe) and lead (Pb).

645

646 **Figure 4.** Mean heavy metal concentration in mosses per EMEP grid square (50 km x
647 50 km) in Europe in 2010 for mercury (Hg), nickel (Ni), vanadium (V) and zinc (Zn).

648

649 **Figure 5.** Average median metal concentration in mosses (\pm one SE) for countries that
650 reported metal data for at least four survey years since 1990 (some countries reported
651 three survey years since 1995 for Hg). The dots in the graphs show the decline in
652 deposition across Europe as modelled by EMEP (Travnikov et al., 2012).

653

654 **Figure 6.** Average median metal concentration in mosses (\pm one SE) for countries that
655 reported metal data for at least four survey years since 1990 (1995 for arsenic).

656

657 **Figure 7.** Mean nitrogen (N) concentration in mosses per EMEP grid square (50 km x
658 50 km) in Europe in 2010 (left) and medium value per country (right). Italy: Bolzano
659 region, Spain: Navarra region.

660 **Table 1.** VARIMAX rotated factors of metal concentrations in mosses.
 661 Loadings and explained variance of the first 3 factors are listed. Loadings higher than
 662 0.5 are shown in bold.

Metal	Factor 1	Factor 2	Factor 3
Aluminium	0.97	0.20	0.12
Arsenic	0.71	0.24	0.24
Cadmium	0.23	0.85	0.03
Copper	0.29	0.41	0.51
Chromium	0.79	0.13	0.33
Iron	0.89	0.21	0.25
Lead	0.43	0.77	0.08
Mercury	0.33	0.15	0.19
Nickel	0.52	0.05	0.74
Vanadium	0.85	0.08	0.23
Zinc	-0.03	0.52	0.12
Variance	4.30	1.94	1.16
Variance (%)	39	18	11

663

664

665 **Table 2.** Average geometric mean values of heavy metal concentrations in mosses for
666 countries that analysed these metals in at least four out of five survey years. The
667 statistical significance (p-value) of survey year is also shown; for each metal, different
668 letters indicate significant differences (at P = 0.05) between years.

669

Metal (no. of countries)	Average geometric mean (mg kg ⁻¹ or % for N)					P-value
	1990	1995	2000	2005	2010	Year
As (11) ¹	-	0.25 ^a	0.21 ^a	0.22 ^a	0.20 ^a	0.054
Cd (21)	0.37 ^a	0.30 ^{a,b}	0.23 ^{b,c}	0.19 ^c	0.19 ^c	<0.001
Cr (20)	2.50 ^a	2.18 ^{a,b}	2.13 ^{b,c}	1.91 ^{a,b,c}	1.50 ^c	<0.001
Cu (20)	7.62 ^a	7.51 ^{a,b}	6.90 ^b	6.63 ^b	6.99 ^b	<0.001
Fe (20)	689 ^a	589 ^{a,b}	600 ^{a,b}	506 ^b	517 ^b	<0.001
Hg (11) ¹	-	0.057 ^a	0.054 ^a	0.055 ^a	0.050 ^a	0.27
Ni (20)	2.63 ^a	2.17 ^{a,b}	2.19 ^{a,b}	1.90 ^b	1.82 ^b	<0.001
Pb (19)	15.3 ^a	9.23 ^b	7.17 ^c	4.95 ^{c,d}	3.69 ^d	<0.001
V (18)	3.92 ^a	3.17 ^{a,b}	2.88 ^{b,c}	1.73 ^{c,d}	1.82 ^d	<0.001
Zn (22)	49.0 ^a	37.7 ^{a,b}	38.4 ^{a,b}	33.1 ^b	32.9 ^b	<0.001
Al (13) ²	-	-	-	1151 ^a	812 ^a	0.24
Sb (7) ²	-	-	-	0.15 ^a	0.11 ^a	0.070
N (14) ²	-	-	-	1.28 ^a	1.21 ^a	0.74

670 ¹ For As and Hg sufficient data were only available for 1995 - 2010.

671 ² For Al, Sb and N data were only available for 2005 and 2010.

672

673 **Table 3.** Decline in the average median heavy metal and N concentrations in mosses
 674 since the start of the European moss survey in 1990¹ and since the previous survey in
 675 2005².

Element	Decline since 1990 ³ (%)	Decline since 2005 (%)	Element	Decline since 1990 (%)	Decline since 2005 (%)
As	21	25	Pb	77	36
Cd	51	7	V	57	27
Cr	43	23	Zn	34	7
Cu	11	6			
Fe	27	15	Al	n.a.	28
Hg	14	20	N	n.a.	5
Ni	33	12	Sb	n.a.	23

676
 677 ¹ Based on data from countries that participated in at least four out of five survey
 678 years. For As countries were included that participated in four survey years since
 679 1995, for Hg some countries were included that had data for three out of four survey
 680 years since 1995.

681 ...² Based on data from countries that participated in both survey years.

682 ³ Decline since 1995 for As and Hg.

683 ...n.a. = not available.

684

685

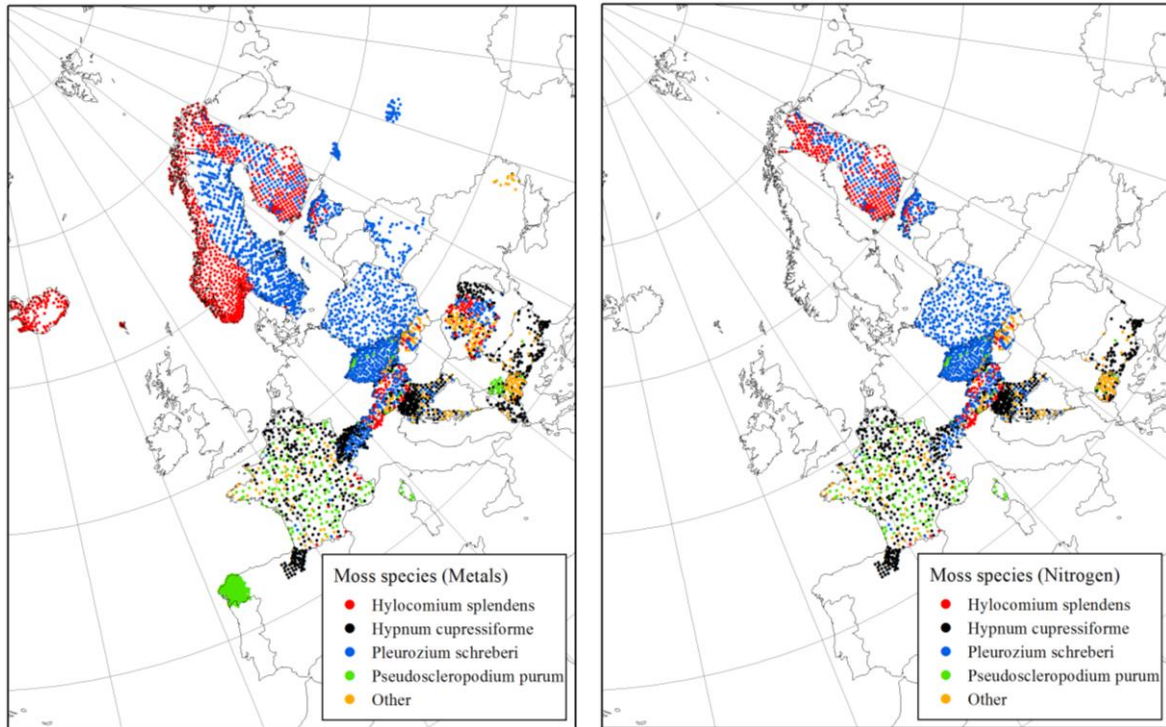


Figure 1. Sites where mosses were sampled for heavy metals (left) and nitrogen analysis in 2010 (right).

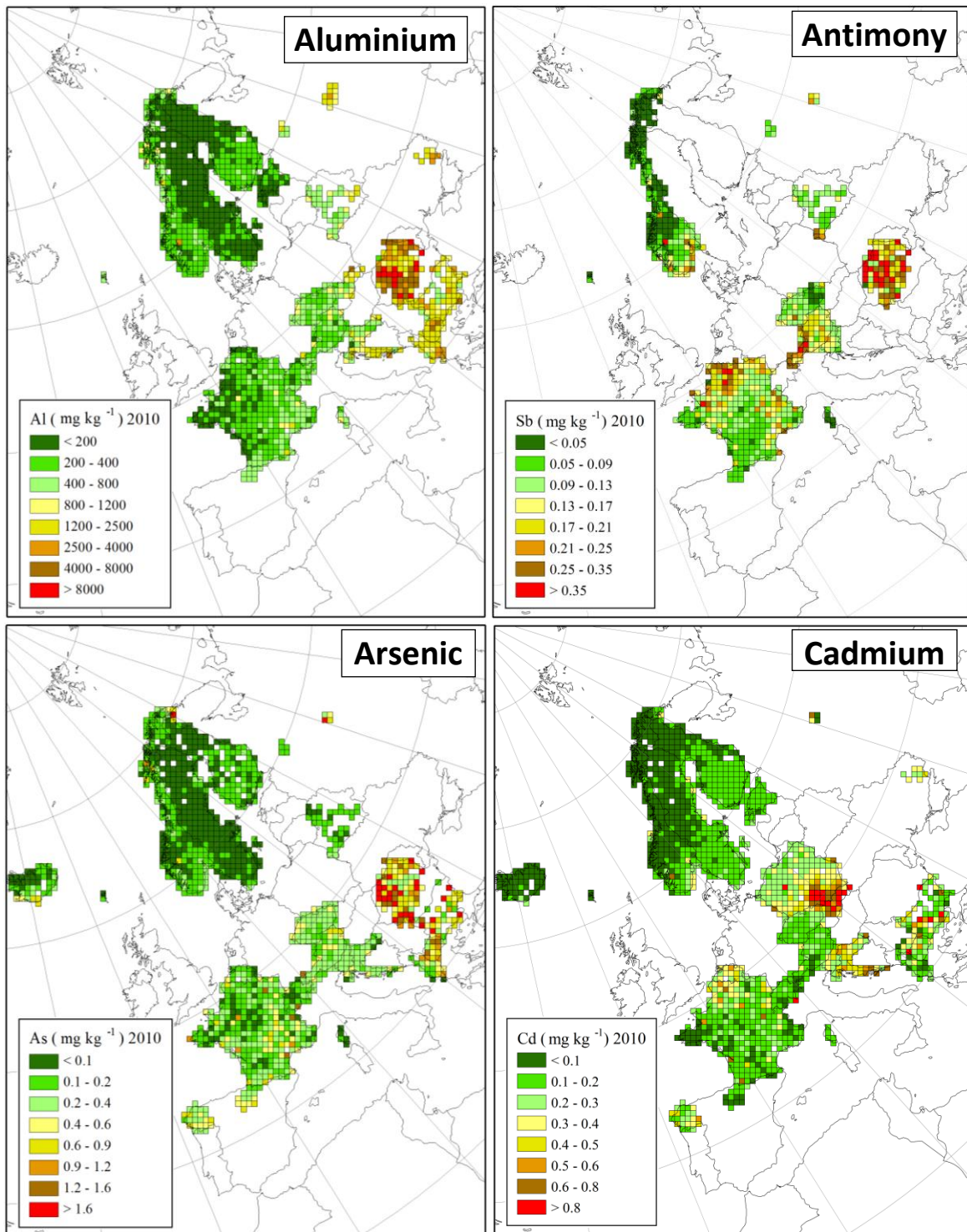


Figure 2. Mean heavy metal concentration in mosses per EMEP grid square (50 km x 50 km) in Europe in 2010 for aluminium (Al), antimony (Sb), arsenic (As) and cadmium (Cd).

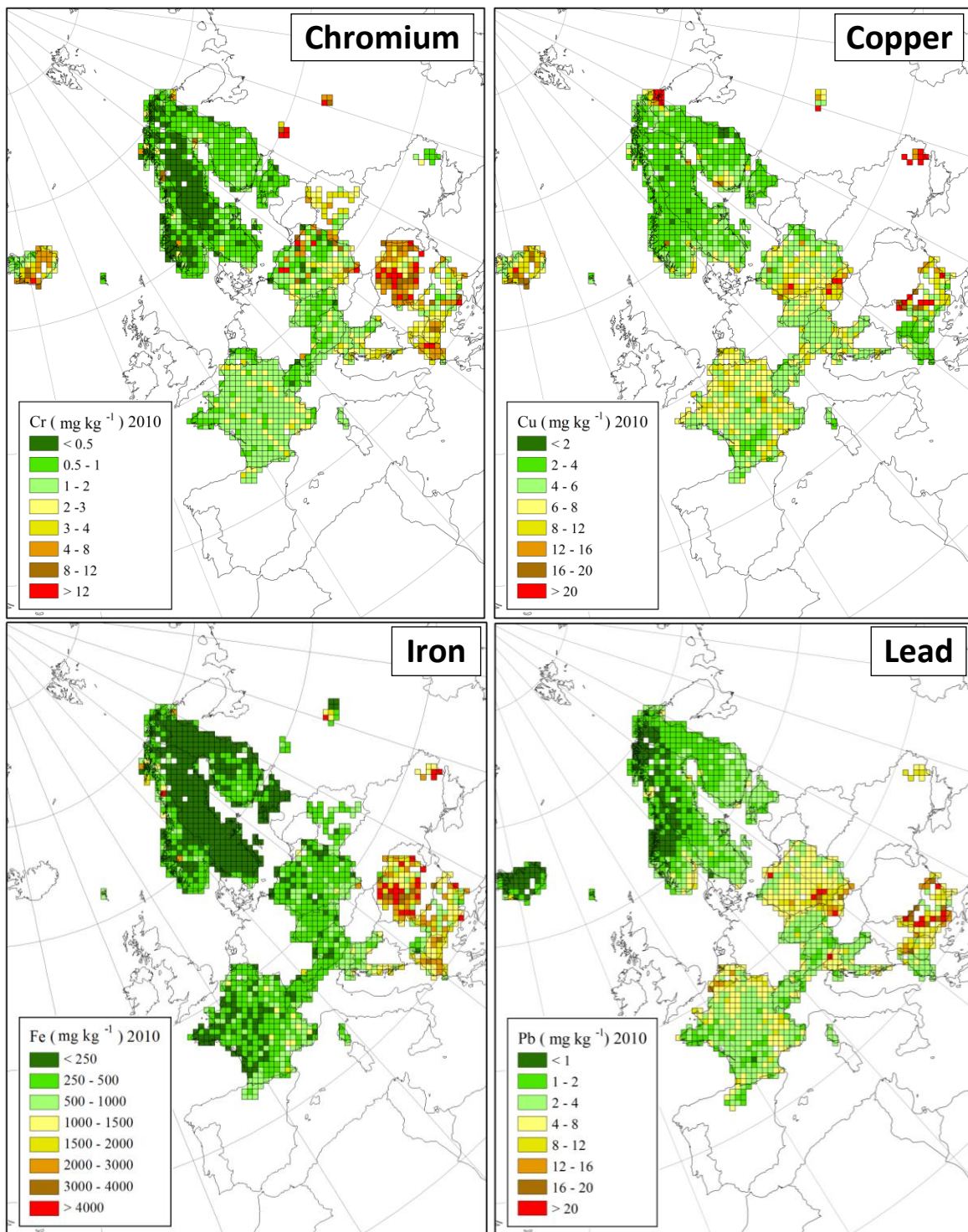


Figure 3. Mean heavy metal concentration in mosses per EMEP grid square (50 km x 50 km) in Europe in 2010 for chromium (Cr), copper (Cu), iron (Fe) and lead (Pb).

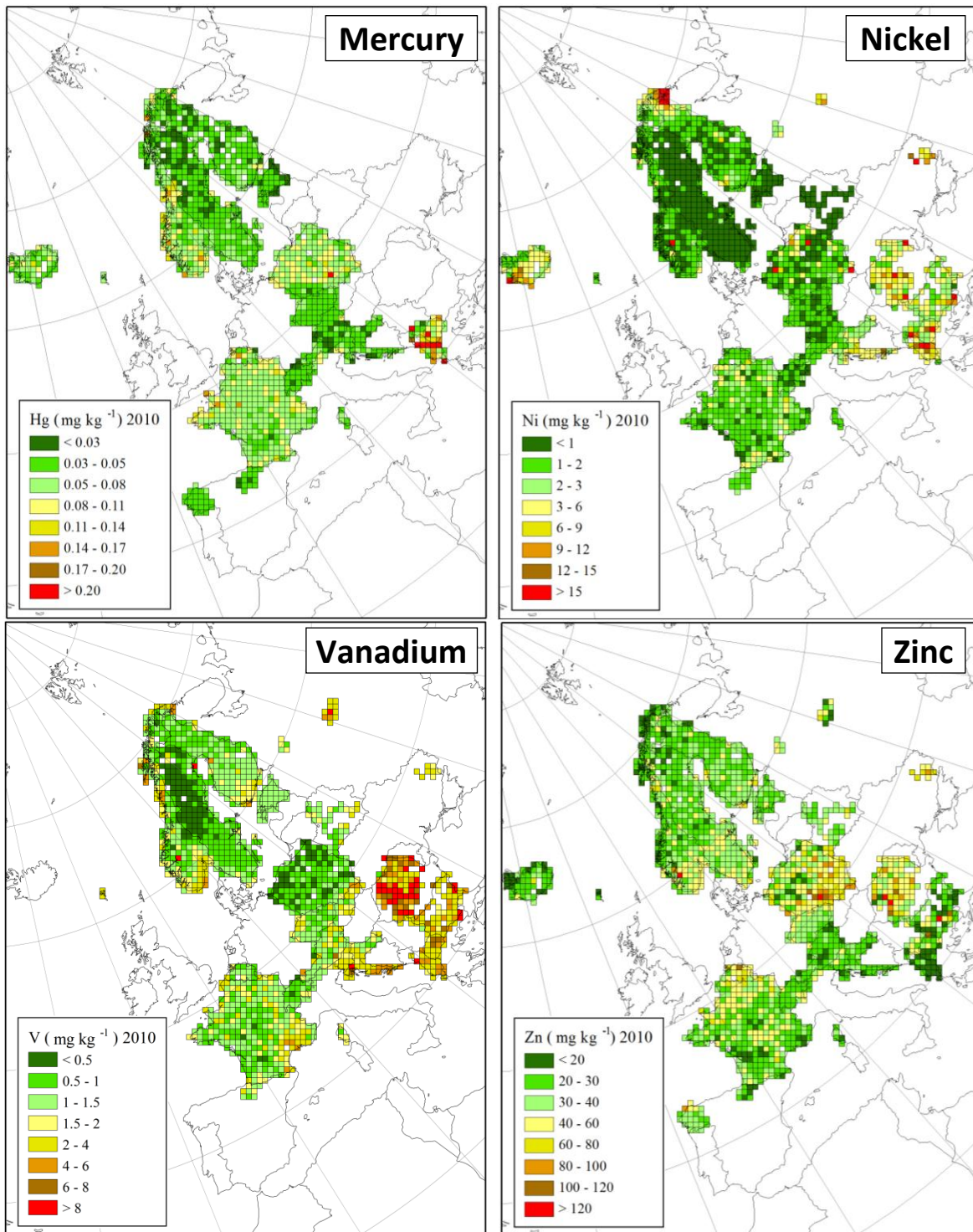


Figure 4. Mean heavy metal concentration in mosses per EMEP grid square (50 km x 50 km) in Europe in 2010 for mercury (Hg), nickel (Ni), vanadium (V) and zinc (Zn).

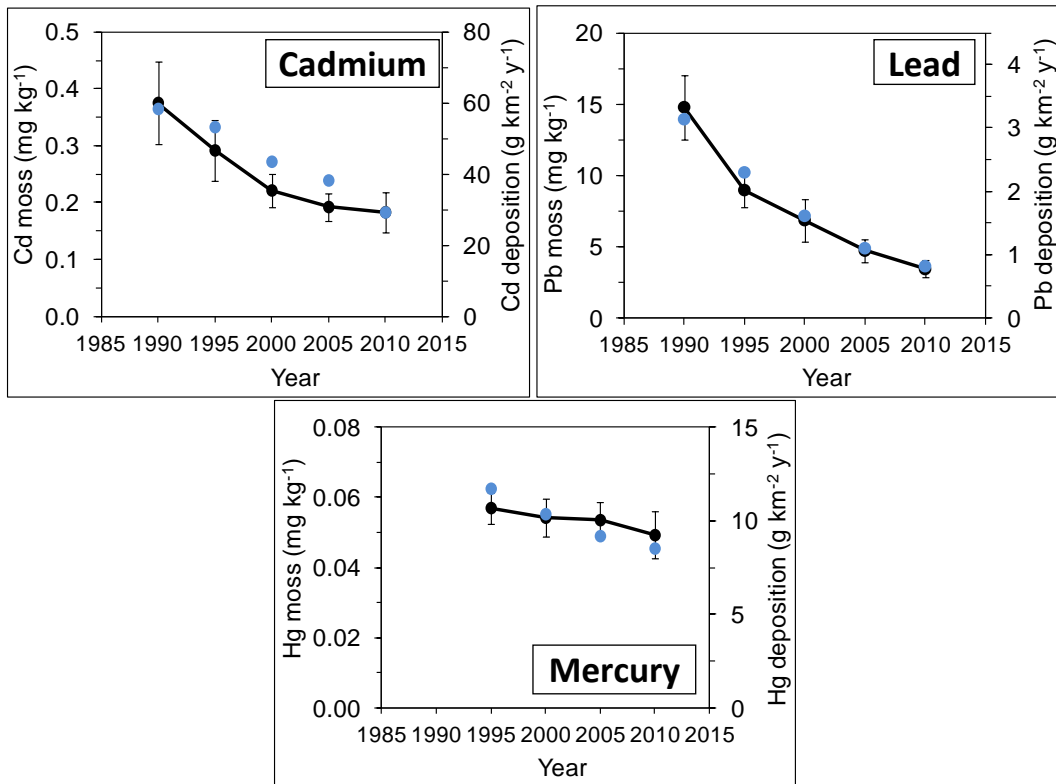


Figure 5. Average median metal concentration in mosses (\pm one SE) for countries that reported metal data for at least four survey years since 1990 (some countries reported three survey years since 1995 for mercury). The dots in the graphs show the decline in deposition across Europe as modelled by EMEP (Travnikov et al., 2012).

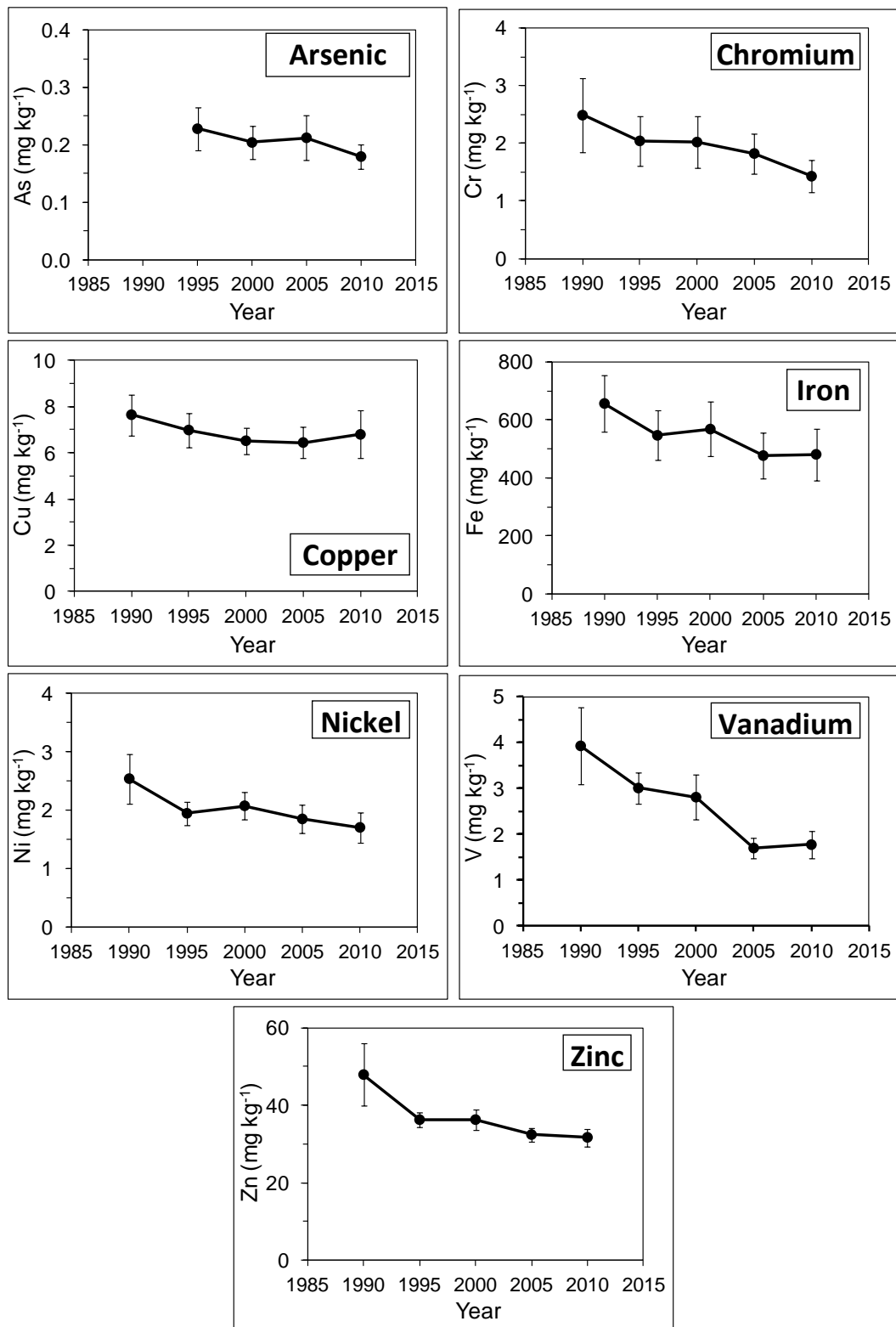


Figure 6. Average median metal concentration in mosses (\pm one SE) for countries that reported metal data for at least four survey years since 1990 (1995 for arsenic).

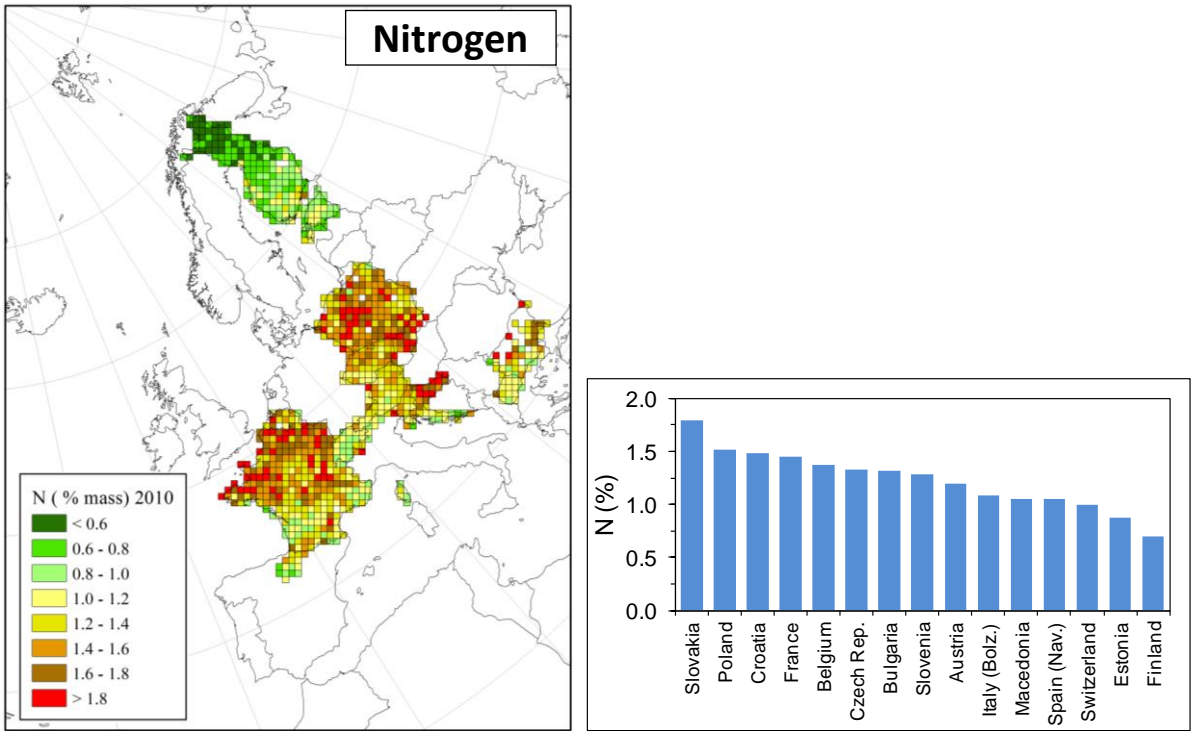
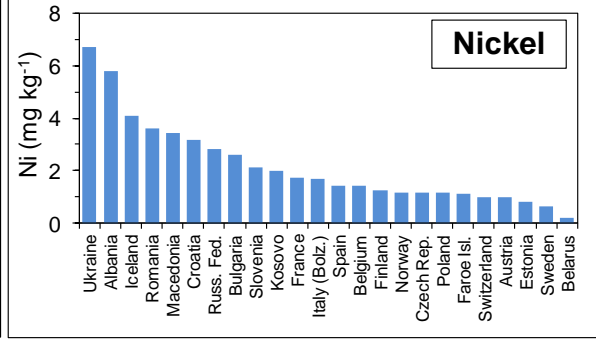
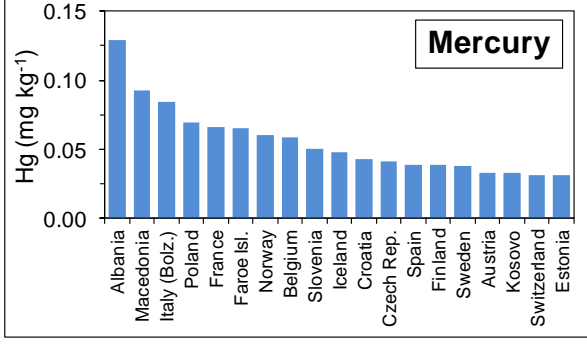
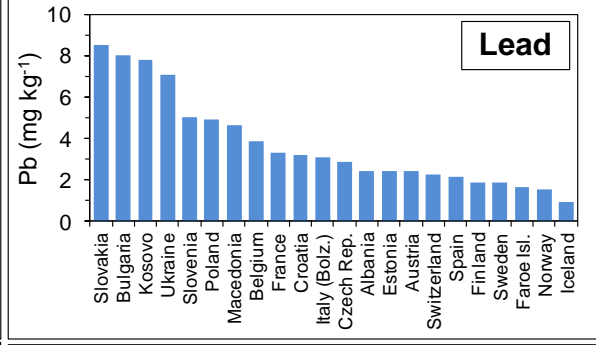
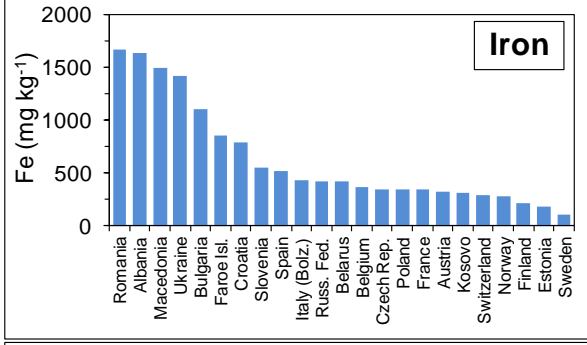
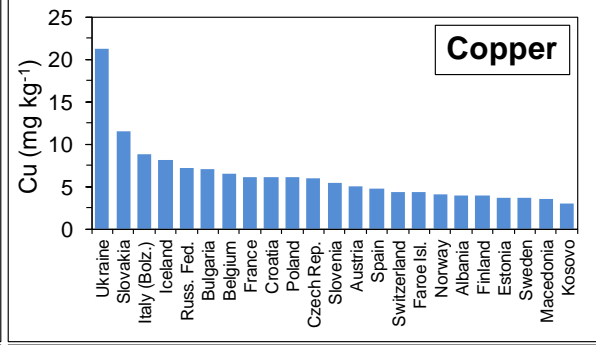
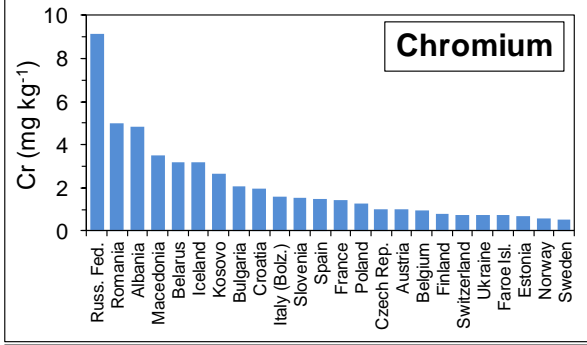
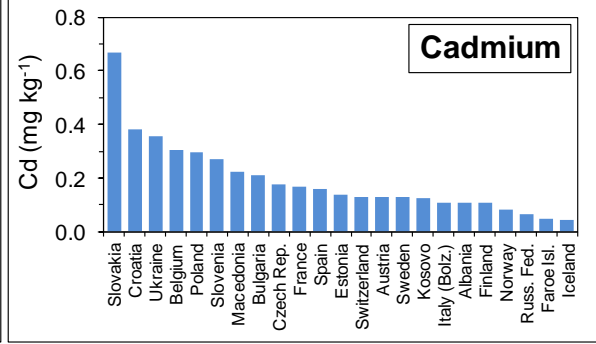
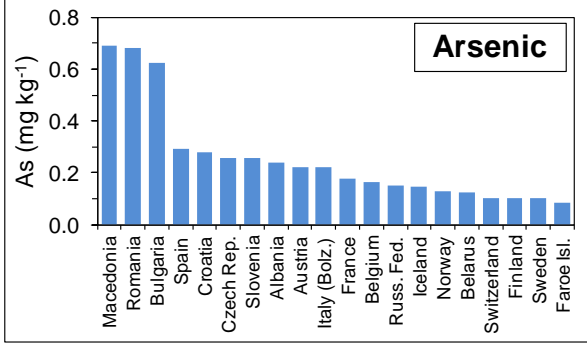
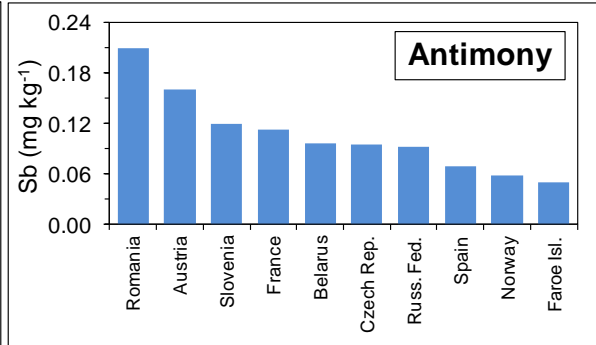
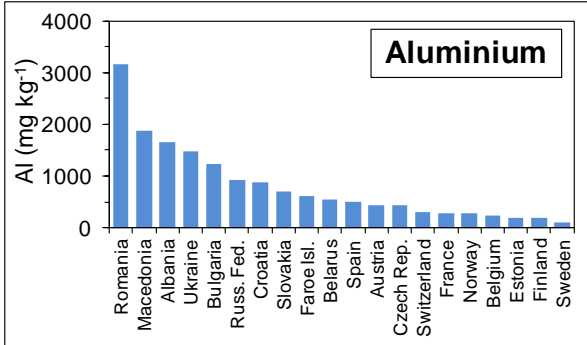


Figure 7. Mean nitrogen concentration in mosses per EMEP grid square (50 km x 50 km) in Europe in 2010 (left) and medium value per country (right). Italy: Bolzano region, Spain: Navarra region.



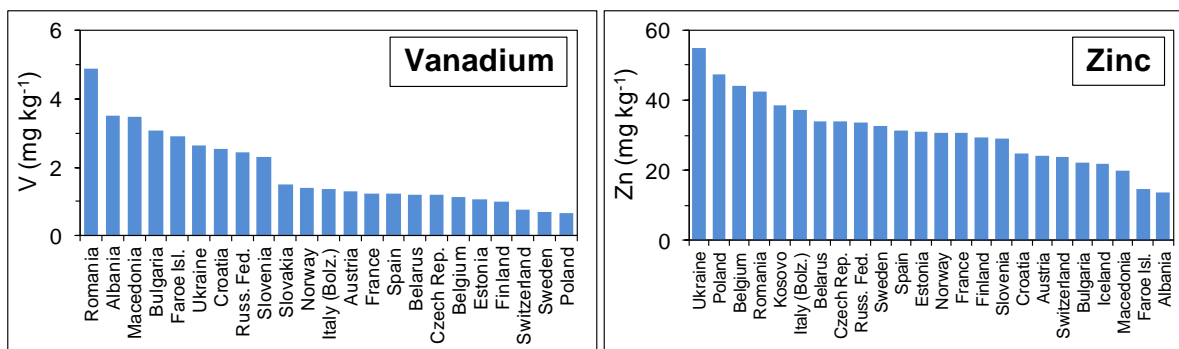


Figure S1. Medium heavy metal concentration in mosses per (region of) country in 2010.

Denmark: Faroe Islands; Italy: Bolzano region; Russian Federation: Ivanovo, Kostromskaya, Tikhvin-Leningradskaya region; Spain: Galicia, Navarra and/or Rioja region; Ukraine: Donetsk region.

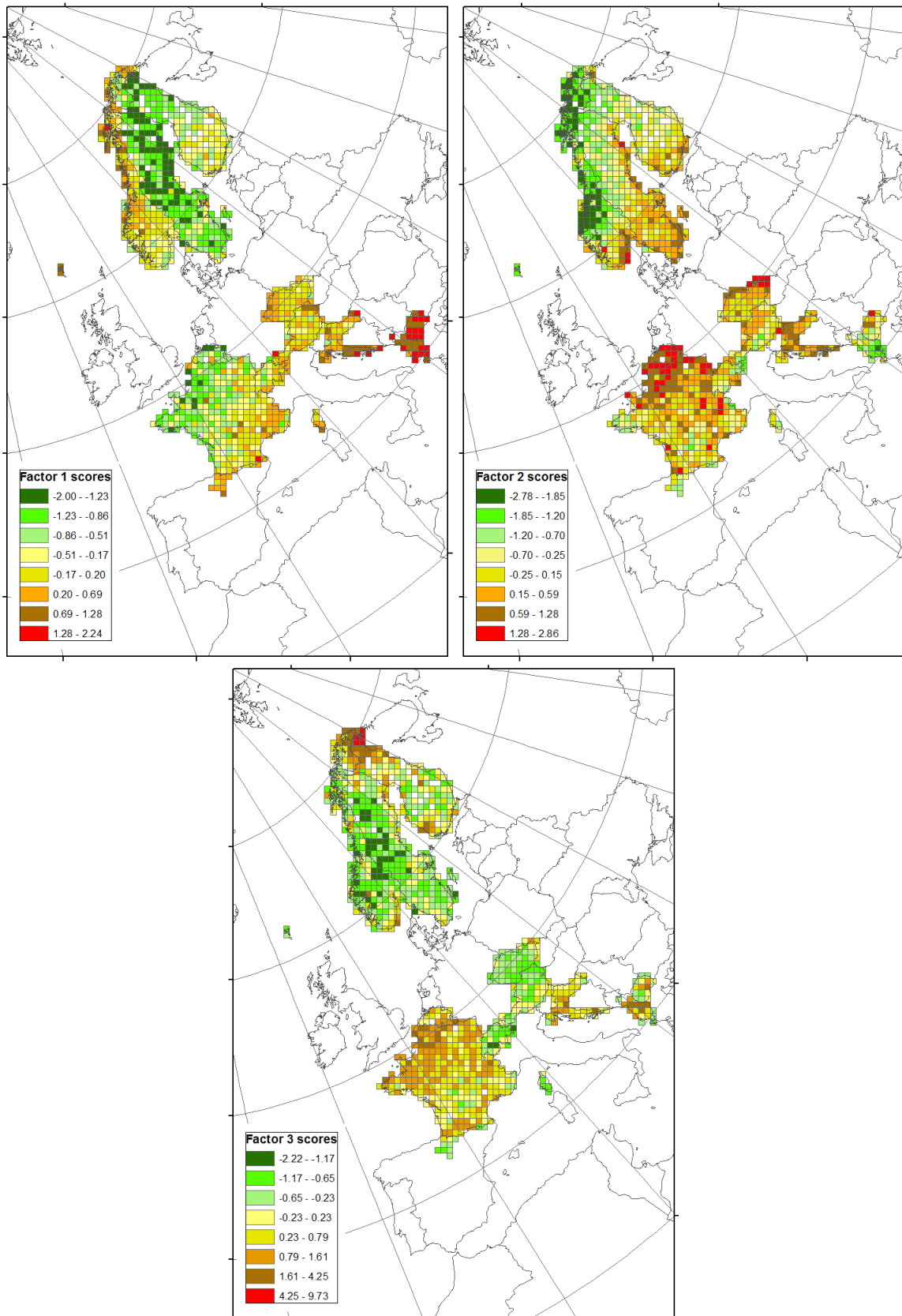


Figure S2. Spatial variation in the strength of association (factor scores) of the identified factors shown in Table 1. Factor 1: Al, As, Cr, Fe, Ni, V; factor 2: Cd, Pb, Zn, Factor 3: Cu, Ni. Note: Factors scores could only be determined for those sites that had data for all metals.

Table S1. Heavy metal (mg kg⁻¹) and nitrogen (mass %) concentrations in mosses in 2010.

	As	Cd	Cr	Cu	Fe	Hg	Ni	Pb	V	Zn	Al	Sb	N (%)
Albania													
Number	59	59	59	59	59	61	59	59	59	59	59		
Min	0.039	0.038	1.62	1.52	469	0.031	1.56	1.34	1.15	1.00	535		
Max	2.20	0.90	31.8	11.1	5488	2.23	131	19.7	16.9	68.1	6974		
Mean	0.42	0.17	6.35	4.31	1915	0.20	11.2	3.37	4.26	14.2	1975		
Median	0.24	0.11	4.83	3.96	1629	0.13	5.81	2.42	3.52	13.8	1650		
90th percentile	1.12	0.29	12.0	6.35	3287	0.31	21.8	4.83	6.63	22.8	3089		
Austria													
Number	221	221	221	221	221	221	221	221	221	221	221	221	221
Min	0.065	0.047	0.49	2.90	97.0	0.004	0.31	0.55	0.34	13.0	81.9	0.040	0.74
Max	1.78	1.10	6.50	29.0	2800	0.35	4.50	12.0	17.0	81.0	3024	1.60	2.20
Mean	0.32	0.16	1.28	5.56	411	0.037	1.18	2.64	1.55	25.6	444	0.19	1.26
Median	0.22	0.13	1.00	5.00	320	0.033	1.00	2.40	1.30	24.0	347	0.16	1.20
90th percentile	0.60	0.26	2.70	6.80	690	0.051	2.00	4.00	2.50	37.0	819	0.29	1.60
Belarus													
Number	76		76		76		76		76	76	76	76	
Min	0.006		0.66		194		0.086		0.59	21.5	267	0.026	
Max	0.34		5.23		1030		1.21		3.68	94.7	1650	0.34	
Mean	0.14		3.04		466		0.39		1.35	40.1	650	0.11	
Median	0.12		3.21		416		0.23		1.19	34.1	557	0.096	
90th percentile	0.20		4.64		788		0.85		2.20	66.7	1045	0.19	
Belgium													
Number	29	29	29	29	29	29	29	29	29	29	29		29
Min	0.052	0.092	0.54	3.27	171	0.020	0.72	2.12	0.41	16.6	114		0.79
Max	0.89	0.69	3.89	11.5	1109	0.32	22.7	12.5	2.76	132	696		2.30
Mean	0.19	0.33	1.08	6.80	377	0.068	2.14	5.14	1.19	52.4	275		1.38
Median	0.16	0.30	0.92	6.50	365	0.058	1.41	3.87	1.14	44.2	242		1.37
90th percentile	0.26	0.55	1.62	8.97	513	0.094	1.97	9.31	1.94	77.6	443		1.78
Bulgaria													
Number	60	129	129	129	129		129	129	129	129	129		99
Min	0.15	0.043	0.72	2.00	307		0.84	1.69	0.96	8.22	402		0.20
Max	10.8	7.75	38.1	270	8546		82.1	333	22.4	286	8886		2.94
Mean	1.08	0.39	3.46	12.2	1534		4.37	16.8	3.96	30.6	1493		1.38
Median	0.63	0.21	2.06	7.01	1101		2.61	8.00	3.07	22.2	1245		1.32
90th percentile	1.76	0.57	5.87	21.0	2824		6.44	21.9	7.52	45.4	2714		1.90
Croatia													
Number	121	121	121	121	121	121	121	121	121	121	121		119
Min	0.039	0.10	0.41	3.35	85	0.010	1.04	1.11	0.23	11.6	112		0.71
Max	0.77	1.42	8.55	16.1	4028	0.15	14.7	36.6	37.3	77.1	4493		2.93
Mean	0.30	0.43	2.25	6.55	881	0.043	3.70	3.79	3.50	27.1	1062		1.54
Median	0.28	0.38	1.94	6.06	789	0.043	3.16	3.21	2.55	24.8	878		1.49
90th percentile	0.54	0.74	3.91	9.32	1658	0.063	6.39	5.48	6.17	41.6	1995		2.35
Czech Republic													
Number	273	273	273	273	273	273	273	273	273	273	273	273	273
Min	0.068	0.092	0.46	3.26	150	0.019	0.37	1.17	0.44	20.1	184	0.001	0.70
Max	1.08	1.38	4.35	10.7	2072	0.11	4.47	42.1	6.10	105	3227	0.82	2.52
Mean	0.29	0.22	1.21	6.00	421	0.043	1.27	3.83	1.38	36.5	526	0.097	1.38
Median	0.26	0.18	1.01	5.92	348	0.041	1.15	2.85	1.18	33.9	435	0.096	1.33
90th percentile	0.46	0.34	2.10	7.84	692	0.058	2.01	5.77	2.23	47.3	797	0.15	1.86
Denmark (Faroe Islands)													
Number	7	7	7	7	7	7	7	7	7	7	7	7	
Min	0.071	0.034	0.56	3.48	511	0.054	0.90	1.30	2.23	12.7	461	0.039	
Max	0.12	0.080	0.84	4.63	1074	0.074	1.84	2.05	4.40	28.8	724	0.060	
Mean	0.086	0.057	0.72	4.09	842	0.065	1.23	1.72	3.01	17.2	617	0.048	
Median	0.084	0.049	0.71	4.27	853	0.064	1.12	1.66	2.91	14.8	612	0.050	
90th percentile	0.10	0.078	0.82	4.52	982	0.072	1.63	2.03	3.73	23.3	711	0.057	
Estonia													
Number		99	99	99	99	99	99	99	99	99	99		99
Min		0.080	0.36	0.92	93	0.022	0.43	1.29	1.05	19.3	79		0.65
Max		0.25	2.40	10.6	617	0.076	2.10	3.97	2.85	55.6	492		1.50
Mean		0.15	0.75	3.81	204	0.034	0.86	2.50	1.17	31.5	204		0.94
Median		0.14	0.68	3.67	180	0.031	0.82	2.41	1.07	30.9	188		0.88
90th percentile		0.21	1.04	4.81	317	0.047	1.15	3.33	1.48	39.7	294		1.28
Finland													
Number	201	426	426	426	426	202	426	426	426	426	426		426
Min	<0.10	<0.050	0.34	0.74	53	0.016	0.42	<0.75	<1.00	11.5	44		0.38
Max	0.38	0.44	14.0	55.1	2230	0.12	88.2	6.57	14.2	102	958		2.06
Mean	0.12	0.12	0.95	4.90	240	0.042	2.45	2.04	1.28	31.0	206		0.77
Median	0.10	0.11	0.80	3.91	209	0.039	1.24	1.87	1.00	29.5	187		0.70
90th percentile	0.17	0.18	1.38	7.45	411	0.067	3.43	3.17	1.79	43.2	318		1.11

Table S1 (continued).

	As	Cd	Cr	Cu	Fe	Hg	Ni	Pb	V	Zn	Al	Sb	N (%)
France													
Number	442	442	442	442	442	442	442	442	442	442	442	442	442
Min	<0.050	0.042	0.52	2.24	86	0.025	0.55	1.00	0.42	14.1	62	0.030	0.80
Max	2.46	1.21	5.91	16.2	3540	0.15	10.2	18.2	6.35	97.3	2020	0.58	2.71
Mean	0.26	0.20	1.55	6.36	429	0.069	2.00	4.03	1.45	34.3	357	0.14	1.47
Median	0.18	0.17	1.43	6.06	343	0.066	1.75	3.29	1.24	30.7	286	0.11	1.45
90th percentile	0.48	0.35	2.27	8.69	788	0.095	3.25	7.17	2.38	53.0	685	0.23	1.90
Iceland													
Number	144	144	144	144		144	144	144		144			
Min	0.045	0.012	0.68	3.06		0.025	0.83	0.27		8.4			
Max	1.38	0.29	18.1	47.4		0.16	40.7	72.1		194			
Mean	0.25	0.06	4.09	9.92		0.055	6.63	1.69		25.6			
Median	0.15	0.05	3.16	8.16		0.048	4.09	0.91		21.9			
90th percentile	0.50	0.12	8.36	16.7		0.088	14.4	2.03		36.2			
Italy (Bolzano region)													
Number	20	20	20	20	20	20	20	20	20	20			20
Min	0.14	0.060	0.78	5.72	232	0.054	0.89	1.76	0.91	17.7			0.68
Max	0.95	0.22	3.37	13.9	646	0.12	3.36	11.5	1.90	68.4			1.43
Mean	0.28	0.11	1.59	9.26	420	0.083	1.77	3.64	1.39	38.2			1.09
Median	0.22	0.11	1.59	8.88	431	0.084	1.69	3.11	1.37	37.1			1.09
90th percentile	0.38	0.14	2.17	12.0	546	0.11	2.27	4.57	1.63	54.7			1.34
Kosovo													
Number		25	25	25	24	25	24	25		25			
Min		0.028	1.63	2.46	124	0.009	1.22	2.62		14.3			
Max		3.05	4.55	3.93	3082	0.35	34.2	47.8		76.0			
Mean		0.37	2.72	3.12	582	0.055	6.08	12.13		37.8			
Median		0.13	2.63	3.04	312	0.033	2.00	7.78		38.5			
90th percentile		0.83	3.52	3.54	1085	0.091	24.4	20.7		55.2			
Macedonia													
Number	52	72	72	72	72	72	72	72	72	72	72		68
Min	0.077	0.068	1.03	1.97	513	0.010	1.25	1.87	1.00	1.00	537		0.68
Max	3.30	2.24	39.7	10.6	6348	0.60	51.7	22.0	17.4	365	8679		1.75
Mean	0.88	0.29	4.68	4.02	1732	0.11	6.43	5.40	3.95	29.7	2176		1.08
Median	0.69	0.22	3.48	3.54	1490	0.093	3.45	4.61	3.49	19.9	1878		1.06
90th percentile	2.01	0.44	7.38	6.21	2941	0.16	10.5	8.37	6.20	48.1	3373		1.29
Norway													
Number	463	463	463	463	463	463	463	463	463	463	463	463	
Min	0.020	0.009	0.16	1.38	27	<0.024	0.15	0.33	0.29	7.4	46	<0.001	
Max	4.84	1.87	47.9	443	24684	0.34	857	20.8	25.9	368	4581	1.17	
Mean	0.18	0.12	0.98	6.43	449	0.070	5.40	2.29	1.76	35.9	346	0.092	
Median	0.13	0.081	0.59	4.04	278	0.060	1.16	1.54	1.41	30.7	283	0.058	
90th percentile	0.26	0.23	1.55	7.29	685	0.11	2.79	4.85	3.03	57.5	565	0.20	
Poland													
Number		320	320	320	320	320	320	320	308	320			320
Min		0.003	0.20	1.46	110	0.029	0.14	1.54	0.11	7.46			0.78
Max		14.3	293	133	2618	0.76	108	141	4.69	211			2.86
Mean		0.45	3.58	6.94	405	0.072	2.20	6.73	0.77	51.8			1.56
Median		0.30	1.27	6.04	344	0.069	1.15	4.93	0.65	47.5			1.52
90th percentile		0.71	4.25	9.64	663	0.097	3.47	10.6	1.36	86.1			1.97
Romania													
Number	333		331		332		253		333	332	333	332	
Min	0.10		0.68		237		0.39		0.39	0.6	220	0.013	
Max	51.1		62.2		29500		35.9		58.3	1440	34400	16.5	
Mean	1.48		8.18		3000		4.99		7.56	56.0	4861	0.45	
Median	0.68		4.98		1670		3.60		4.89	42.3	3150	0.21	
90th percentile	2.76		18.9		6610		8.80		17.7	85.4	11620	0.63	
Russian Federation (Ivanovo, Kostromskaya, Tikhvin-Leningradskaya)													
Number	66	30	65	21	90		66		90	91	90	66	
Min	0.067	0.004	0.73	1.02	50		1.17		0.81	2.40	288	0.028	
Max	9.32	0.96	242	43.9	13600		11.3		23.40	172	13300	0.32	
Mean	0.46	0.17	22.4	10.2	1049		4.08		4.15	39.2	1826	0.12	
Median	0.15	0.068	9.16	7.22	419		2.82		2.45	33.6	922	0.092	
90th percentile	0.92	0.42	41.5	24.0	2470		9.48		11.1	59.5	3496	0.22	
Slovakia													
Number		67		67				67	67		67		67
Min		0.078		6.44				2.31	0.60		251		1.00
Max		3.39		90.4				58.4	10.2		5580		2.85
Mean		0.77		14.5				10.9	2.04		1043		1.84
Median		0.67		11.5				8.51	1.50		707		1.79
90th percentile		1.24		19.8				18.9	3.39		1926		2.39
Slovenia													
Number	102	102	102	102	102	63	102	102	102	102		102	102
Min	0.13	0.090	0.72	2.83	243	0.030	0.85	1.96	1.00	14.7		0.060	0.85
Max	0.83	1.05	13.7	11.4	1391	0.16	8.16	304	7.00	66.7		0.76	1.99
Mean	0.28	0.33	1.94	5.71	617	0.056	2.34	8.79	2.40	31.5		0.13	1.32
Median	0.26	0.27	1.56	5.42	548	0.050	2.12	5.01	2.30	29.0		0.12	1.29
90th percentile	0.41	0.53	2.69	7.29	934	0.070	3.34	8.63	3.57	48.7		0.18	1.70

Table S1 (continued).

	As	Cd	Cr	Cu	Fe	Hg	Ni	Pb	V	Zn	Al	Sb	N (%)
Spain (Galicia, Navarra, Rioja)¹													
Number	211	211	39	39	39	211	64	64	39	186	39	39	64
Min	0.086	0.031	0.43	2.64	171	0.022	0.58	0.95	0.55	12.7	173	0.040	0.64
Max	2.69	1.57	4.77	9.81	1449	0.081	3.94	10.3	4.20	156	1459	0.15	1.80
Mean	0.39	0.22	1.83	4.83	610	0.040	1.60	2.75	1.36	32.9	597	0.072	1.09
Median	0.29	0.16	1.46	4.70	520	0.039	1.44	2.13	1.21	31.5	511	0.069	1.05
90th percentile	0.73	0.37	3.38	6.25	1089	0.053	2.88	4.86	2.08	44.7	1043	0.10	1.48
Sweden													
Number	602	602	602	602	602	602	602	602	602	602	602		
Min	0.080	0.023	0.11	1.38	28	0.016	0.22	0.43	0.16	13.4	25		
Max	0.45	0.39	10.8	23.5	2406	0.14	7.11	19.9	9.63	81.9	1303		
Mean	0.10	0.13	0.67	3.92	135	0.041	0.72	2.09	0.79	33.9	143		
Median	0.10	0.13	0.52	3.61	101	0.038	0.66	1.87	0.69	32.6	110		
90th percentile	0.10	0.21	1.14	5.57	218	0.062	1.02	3.38	1.26	46.8	254		
Switzerland													
Number	142	142	142	142	156	142	142	142	142	142	142		64
Min	0.027	0.034	0.21	2.61	101	0.018	0.17	0.71	0.22	11.1	81		0.64
Max	5.81	3.57	5.25	10.0	1732	0.076	5.93	12.7	4.27	170	2256		1.88
Mean	0.19	0.18	0.92	4.89	351	0.034	1.30	2.60	0.88	27.8	357		1.05
Median	0.10	0.13	0.75	4.37	286	0.031	1.00	2.24	0.74	23.7	295		1.00
90th percentile	0.27	0.26	1.55	6.68	601	0.047	2.50	4.15	1.44	40.7	626		1.38
Ukraine (Donetsk)													
Number		16	16	17	17		17	17	17	17	17		
Min		0.080	0.25	12.8	1003		4.70	5.56	0.98	37.6	821		
Max		0.52	2.40	62.1	7307		26.1	20.9	3.99	152	4664		
Mean		0.33	0.92	22.9	2437		8.94	8.74	2.51	63.7	1822		
Median		0.36	0.73	21.2	1414		6.70	7.07	2.63	54.9	1476		
90th percentile		0.40	1.59	33.1	6708		15.4	14.4	3.80	92.4	3177		

¹ As, Cd, Hg: all regions; Zn: Galicia and Navarra; Ni, Pb, N: Navarra and Rioja; Al, Cr, Cu, Fe, Sb, V: Navarra. Number = number of sampling sites; Min = minimum; Max = maximum.