



Stem cell mobilization chemotherapy with gemcitabine is effective and safe in myeloma patients with bortezomib induced neurotoxicity.

Journal:	<i>Leukemia and Lymphoma</i>
Manuscript ID:	GLAL-2015-0435.R1
Manuscript Type:	Original Article – Clinical
Date Submitted by the Author:	n/a
Complete List of Authors:	Pabst, Thomas; Bern University Hospital, Department of Medical Oncology Mueller, Beatrice; University of Bern, Department of Clinical Research Keller, Sandra; University Hospital Bern, Department of Medical Oncology Seipel, Katja; University of Bern, Department of Clinical Research Mansouri Taleghani, Behrouz; University Hospital Bern, Department of Hematology Rauch, Daniel; Kantonsspital, Department of Medical Oncology Betticher, Daniel; Kantonsspital, Department of Medical Oncology Egger, Thomas; Kantonsspital, Department of Medical Oncology
Keywords:	Stem cell mobilization < Marrow and Stem Cell Transplantation, Myeloma < Neoplasia, Clinical Results < Marrow and Stem Cell Transplantation

SCHOLARONE™
Manuscripts

1
2
3 **Stem cell mobilization chemotherapy with gemcitabine is effective and**
4
5 **safe in myeloma patients with bortezomib induced neurotoxicity.**
6
7
8
9

10
11 **AUTHORS:** ¹Beatrice U. Mueller, ²Sandra Keller, ¹Katja Seipel, ³Behrouz Mansouri
12 Taleghani, ⁴Daniel Rauch, ⁵Daniel Betticher, ⁶Thomas Egger, ²Thomas Pabst.
13
14

15
16
17 **AFFILIATIONS:** ¹Department of Clinical Research, University of Berne; Berne, Switzerland;
18 ²Department of Medical Oncology, University Hospital of Berne; Berne, Switzerland;
19 ³Department of Hematology, University Hospital of Berne; Berne, Switzerland; ⁴Department
20 of Oncology; Kantonsspital; Thun, Switzerland; ⁵Department of Oncology; Kantonsspital;
21 Fribourg, Switzerland; and ⁶Department of Oncology; Kantonsspital; Solothurn, Switzerland.
22
23
24
25
26
27

28 **RUNNING HEAD:** Gemcitabine for mobilization in myeloma.
29
30
31
32

33 **ABBREVIATIONS:** MM: multiple myeloma; HDCT: high-dose chemotherapy; ASCT:
34 autologous stem cell transplantation; G-CSF: granulocyte-colony stimulating factor; PN:
35 peripheral neuropathy; CIPN: chemotherapy-induced peripheral neuropathy; BIPN:
36 bortezomib-induced peripheral neuropathy; OS: overall survival; PFS: progression-free
37 survival.
38
39
40
41
42

43 **MANUSCRIPT DETAILS:** abstract: 199 words (200 allowed); manuscript word count: 2832
44 words (3'000 allowed); 4 tables; 1 figure; no supplemental material; 27 references.
45
46
47
48

49 **CORRESPONDING AUTHOR:** Thomas Pabst MD; Associate Professor; Department of
50 Medical Oncology; University Hospital; Berne; Switzerland. Phone: ++41 31 632 8430; fax:
51 ++41 31 632 3410; Email: thomas.pabst@insel.ch.
52
53
54
55
56
57
58
59
60

SUMMARY

Background: Vinorelbine chemotherapy with G-CSF stimulation is a widely applied non-myelosuppressive mobilization regimen in Switzerland for myeloma patients, but its neurotoxic potential limits its use in patients with bortezomib induced polyneuropathy.

Methods: In this single-center study, we alternatively evaluated safety and effectiveness of gemcitabine chemotherapy with G-CSF for mobilization of autologous stem cells.

Results: Between 03/2012 and 02/2013, all bortezomib pretreated myeloma patients planned to undergo first-line high-dose melphalan chemotherapy received a single dose of 1250mg/m² gemcitabine, with G-CSF started on day four. The 24 patients in this study have received a median of four cycles of bortezomib-dexamethason based induction. Bortezomib-caused polyneuropathy was identified in 21 patients (88%) by clinical evaluation and a standardized questionnaire. Administration of gemcitabine mobilization did not induce novel or aggravate preexisting neuropathy. Stem cell mobilization was successful in all 24 patients, with a single day of apheresis being sufficient in 19 patients (78%). The median yield was 9.51×10^6 CD34+ cells/kg. Stem collection could be accomplished at day 8 in 67%.

Conclusion: Our data suggest that single-dose gemcitabine together with G-CSF is an effective mobilization regimen in myeloma patients and a safe alternative non-myelosuppressive mobilization chemotherapy for myeloma patients with bortezomib induced polyneuropathy.

KEY WORDS: mobilization; stem cells; myeloma; polyneuropathy; gemcitabine; bortezomib; neurotoxicity; autologous; transplant.

INTRODUCTION

Significant advances have been reported in the treatment of myeloma patients in the last decades. The introduction of proteasome inhibitors and immunomodulatory compounds for induction treatment, high-dose chemotherapy (HDCT) followed by autologous stem cell transplantation (ASCT) for consolidation, and subsequent maintenance treatment with lenalidomide or bortezomib have increased remission and survival rates in myeloma patients (Bladé *et al*, 2005; Fernand *et al*, 2005; Giralt *et al*, 2011; Harrousseau *et al*, 2009; Ludwig *et al*, 2010; Rajkumar, 2011). Noteworthy, a number of studies identified an independent benefit of first-line HDCT with ASCT also in the era of novel agents, which was further enhanced by maintenance treatment after HDCT (Bladé *et al*, 2005; Fernand *et al*, 2005; Giralt *et al*, 2011; Harrousseau *et al*, 2009). These observations indicate that ASCT continues to be a component of the first-line treatment algorithm for young and fit myeloma patients (Harrousseau *et al*, 2009; Ludwig *et al*, 2010).

The optimal strategy to mobilize autologous stem cells from the bone marrow to the peripheral blood remains an issue of ongoing controversy (Giralt *et al*, 2011). Repetitive applications of the granulocyte colony-stimulating factor (G-CSF) alone can effectively mobilize peripheral CD34+ cells, whereas the combination of G-CSF with chemotherapy is usually associated with a more potent recruitment of CD34+ cells from the bone marrow niche. The additional administration of the expensive stem cell mobilizing compound plerixafor represents a rescue strategy for patients failing such mobilization strategies.

Based on the considerations above, the combined use of chemotherapy and G-CSF is a widely used concept. While high-dose cyclophosphamide with G-CSF is commonly given for chemotherapy mobilization, the administration of a single dose of non-myelosuppressive chemotherapy with vinorelbine (35mg/m²) together with G-CSF started on day 4 is the standard mobilization regimen in Switzerland since more than a decade (Bargetzi *et al*, 2003; Heizmann *et al*, 2009; Samaras *et al*, 2015; Schmid *et al*, 2015). Its obvious advantages compared to cyclophosphamide treatment comprise a highly predictable stem cell collection

1
2
3 at day 8, the entirely ambulatory concept, and the lack of infectious and toxic complications
4
5 notoriously following cyclophosphamide mobilization (Bargetzi *et al*, 2003; Heizmann *et al*,
6
7 2009; Samaras *et al*, 2015; Schmid *et al*, 2015).
8

9 With the predominant use of bortezomib during induction treatment and with
10
11 chemotherapy-induced polyneuropathy (CIPN) as its major and often limiting side effect, the
12
13 subsequent use of vinorelbine for mobilization has become increasingly problematic because
14
15 of its added neurotoxicity (Argyriou *et al*, 2008; Carlson *et al*, 2011; Delforge *et al*, 2010;
16
17 Keller *et al*, 2015; Koeppen *et al*, 2014; Mohty *et al*, 2010; Richardson *et al*, 2006; Swain *et*
18
19 *al*, 2008). Clinically significant induction of novel - as well as aggravation of bortezomib
20
21 induced - CIPN following mobilization treatment with a single dose of vinorelbine in myeloma
22
23 patients has recently been reported by our group (Keller *et al*, 2015). These facts identified a
24
25 need for an alternative non-neurotoxic mobilization chemotherapy, while preserving the
26
27 advantages of a non-myelosuppressive strategy.
28

29 Gemcitabine has been previously used for stem cell mobilization as a part of
30
31 polychemotherapy regimens in Hodgkin lymphoma patients (Suyani *et al*, 2011). However,
32
33 its use as monochemotherapy for mobilization has not been reported so far. In this study, we
34
35 investigated the safety and effectiveness of gemcitabine together with G-CSF for the
36
37 mobilization of autologous stem cells in myeloma patients after bortezomib/dexamethasone-
38
39 based induction treatment.
40
41
42
43
44
45
46
47
48
49
50
51
52
53
54
55
56
57
58
59
60

PATIENTS AND METHODS

Patients and study design

This is a single-center prospective study analyzing all consecutive myeloma patients undergoing first-line consolidation treatment with high-dose melphalan chemotherapy (HDCT) and autologous stem cell transplantation (ASCT) between 03/2012 and 02/2013. Patients must have been treated with a bortezomib/dexamethasone-based induction regimen, the age needed to be below 71 years, and a minimum renal function with a kreatinin clearance of 40ml/min and neutrophils above 1.0 G/L were required. Clinical characteristics and treatment details of the patient cohort are depicted in **Table 1**. The local ethics committee of Berne, Switzerland with decision #143/2014 approved this study.

Data sources were medical records of the patients. Neuropathy was assessed by two independent investigators, with T.P. having been one of them for all study patients. In addition, a standardized questionnaire was filled out by all study patients. The questionnaire assessed signs and treatment of neuropathy as well as the subjective disease burden of chemotherapy induced polyneuropathy; it also helped to verify the information retrieved from the medical records. A 100% response rate was achieved.

Chemomobilization and autologous stem cell transplantation

Gemcitabine was administered to all patients as a 30 minute infusion at 1250 mg/m² on day 1, and filgrastim (G-CSF) was given subcutaneously at a dose of 1 Mio U/kg/day divided into two daily doses. G-CSF was started on day 4 and continued until (and including) the day of stem cell collection. Apheresis was triggered at the first day with more than 15'000 CD34+ cells/ml in the peripheral blood. 2 x 10⁶ CD34+ cells/kg was the minimum collection requirement, and we aimed to collect between 3-5 x 10⁶ CD34+ cells/kg per transplant, with usually two transplants being planned. Cell processing procedures followed local standards. Patients received single-day high-dose chemotherapy with melphalan administered

1
2
3 intravenously at a dose of 200mg/m², with peripheral stem cell transplantation at the
4
5 following day.
6
7

8 9 **Definitions**

10
11 The two primary objectives of the study were safety and effectiveness of gemcitabine
12 mobilization treatment. We studied CIPN during induction, mobilization, high-dose and
13 maintenance treatment. We studied CIPN during induction, mobilization, high-dose and
14 maintenance treatment. We assessed incidence, severity, localization, and specific
15 treatment. CIPN was defined as gemcitabine-induced, when patients presented novel or
16 increased symptoms within two weeks after its administration. CIPN during bortezomib-
17 based induction treatment was identified when it occurred between the first bortezomib
18 administration and up to 30 days after the last dose. CIPN was assessed according to the
19 modified version of the National Cancer Institute Common Toxicity Criteria for Adverse
20 Events (NCI-CTCAE; version 4.03). We used the following categories: general sensory
21 neuropathy (paresthesia, dysesthesia, hypesthesia, hyperesthesia, hyporeflexia, hypalgesia,
22 and decreased temperature sensation); neuropathic pain; general motoric neuropathy
23 (muscle weakness); fasciculation (including tremor and spasm); and ataxia. We also
24 investigated the need for specific analgetic CIPN medication as well as modification or
25 interruption of myeloma specific treatment in order to control CIPN symptoms.
26
27
28
29
30
31
32
33
34
35
36
37
38
39
40
41
42

43 44 **Statistical analysis**

45
46 We applied descriptive statistics to calculate variables. We summarized the number of
47 observations, median and range for continuous variables, and we calculated the number and
48 percentage of patients in each category for categorical data. Nominal variables were
49 compared with Fisher exact tests. We used non-parametric Mann-Whitney-U tests for
50 continuous variables. The response rates were defined according to the IMWG criteria. OS
51 was the time from transplant until the date of death from any cause. PFS was the time from
52 transplant to first progression, relapse or death whichever occurred first. Patients without
53
54
55
56
57
58
59
60

1
2
3 progression or death were censored at their last follow-up. We designed time-to-event
4
5 estimates (PFS, OS) according to the Kaplan-Meier method using the log-rank (Mantel-Cox)
6
7 test. Data cut-off date was April 1, 2015. All p-values were two-sided, and a *P*-value of less
8
9 than .05 was considered statistically significant. We performed all analyses using the
10
11 GraphPadPrism software (Version 6.0b, GraphPad Software, Inc, San Diego, CA).
12
13
14
15
16
17
18
19
20
21
22
23
24
25
26
27
28
29
30
31
32
33
34
35
36
37
38
39
40
41
42
43
44
45
46
47
48
49
50
51
52
53
54
55
56
57
58
59
60

For Peer Review Only

RESULTS

Patients

Between 03/2012 and 02/2013, 24 consecutive myeloma patients at the University Hospital in Bern, Switzerland received bortezomib/dexamethasone-based first-line induction treatment and subsequent chemomobilization with gemcitabine and G-CSF as per protocol. The patient characteristics at diagnosis and additional information on the chemotherapy regimens are listed in **Table 1**. The median age at diagnosis of the patients in our cohort was 61 years (range 52-70 years). Patients mostly had IgG subtype (50%), whereas the type of light chains involved and ISS stages were equally distributed. FISH analyses was available in 17 patients (71%). All 24 patients received an induction treatment with bortezomib and dexamethasone (VD). In addition, two patients further received cyclophosphamide (VCD), two patients had doxorubicin (PAD), two patients were also treated with thalidomide (VTD), and two patients received lenalidomide (VRD), respectively.

Stem cell mobilization and transplantation

Detailed information on mobilization, stem cell collection and transplantation are summarized in **Table 2**. All patients received gemcitabine at the planned dose of 1250mg/m² at day 1. None of the patients experienced neutropenia < 0.5 G/L or thrombocytopenia < 50 G/L following gemcitabine treatment. No bleeding complications and no febrile episodes requiring antibiotic treatment occurred. Two patients developed edema and weight gain requiring diuretic treatment. Ten of the 24 patients were hospitalized during the stem cell mobilization process, with all hospitalizations related to the application of a central venous catheter line for stem cell harvest, with a median hospitalization duration of two days, ranging from two to four days. In 19 patients (79%), a single day of apheresis was sufficient to obtain the minimum number of > 2 x 10⁶ CD34+cells/kg, whereas five patients (21%) needed two days of stem cell collection. Apheresis was initiated after a median of 8 days (range 8 to 10 days)

1
2
3 after mobilization with gemcitabine. The total median duration of apheresis was 285 minutes,
4
5 with a range from 70 to 420 minutes. The median final collection of CD34+ cells was $9.51 \times$
6
7 10^6 cells/kg, with a range from 4.95 to 19.2. We found that more than 10×10^6 CD34+
8
9 cells/kg b.w. were collected in 54% of the patients. Finally, none of the patients improved the
10
11 remission status following gemcitabine treatment.

12
13 All patients in this study underwent subsequent high-dose chemotherapy with
14
15 200mg/m² melphalan, with peripheral stem cell transplantation at the following day. The
16
17 patients received a median of 3.4×10^6 CD34+ cells/kg (range 2.0 to 5.4). All patients had
18
19 successful engraftment. The median time to recovery was 11 days (range 11 to 13 days) for
20
21 neutrophils (ANC > 0.5 G/l), 13 days (range 9 to 21 days) for platelets > $20 \times 10^9/l$, and 20
22
23 days (range 15 to 40 days) for platelets > $100 \times 10^9/l$. Maintenance treatment after ASCT was
24
25 given in 15 patients (63%), with lenalidomide in all these patients.
26
27
28
29

30 **Chemotherapy induced polyneuropathy (CIPN)**

31
32
33 The incidence of CIPN during induction and mobilization treatment is summarized in **Table 3**.
34
35 In one patient (5%), polyneuropathy was pre-existing, most likely due to diabetes mellitus in
36
37 this patient. Evaluation of clinical assessment together with the patient questionnaire
38
39 indicated that any signs of clinical manifestation of CIPN during bortezomib-based induction
40
41 treatment occurred in 21 of 24 myeloma patients (88%). We found that the differences
42
43 observed in the total incidence of CIPN as documented by the treating physicians in their
44
45 medical charts compared to the data retrieved from individual questionnaires were not
46
47 significant ($P = .45$).
48

49
50 Symptoms of CIPN were first reported after a mean of 6.88 weeks of bortezomib
51
52 treatment. As depicted in **Table 4**, CIPN affected patients predominantly reported sensory
53
54 symptoms (68%), with grade I/II in 48% and grade III/IV in 20%. Motoric symptoms were
55
56 documented in 7 patients (28%), all being grade I or II. Ataxia was identified in two patients
57
58 (8%). Standard medication given for neuropathic pain involved pregabalin, gabapentin and
59
60

1
2
3 opioids. Finally, four patients (16%) of the patients needed bortezomib dose reduction,
4
5 prolongation of treatment interval or even interruption of therapy as a consequence of the
6
7 occurrence of bortezomib-induced CIPN. In two patients (8%), CIPN resulted in the
8
9 premature discontinuation of bortezomib treatment. However, none of the patients in this
10
11 study received a second line of chemotherapy, for whatever reason, before mobilization
12
13 treatment.

14
15 Noteworthy, we observed only one patient (4%) with worsening of bortezomib-
16
17 induced sensory CIPN (from grade I to II) during and following mobilization treatment with
18
19 gemcitabine. Also, a single patient (4%) reported worsening of bortezomib-induced sensory
20
21 CIPN (from grade I to II) following high-dose chemotherapy. During lenalidomide
22
23 maintenance treatment, two patients (8%) had worsening of CIPN (one patient from grade I
24
25 to II, and one patient from grade II to III) as summarized in **Table 4**.

26
27 Repetitive follow-up information on the course of CIPN was available for all patients.
28
29 Symptoms of CIPN resolved in 14% of all patients (n=3) until the day 100 assessment after
30
31 HDCT. In additional 9 (41%) patients, symptoms gradually improved over time with a median
32
33 time to disappearance of 5 months (range 4 to 9 months). However, 18% of the patients
34
35 (n=4) only had a partial improvement of CIPN, and 27% of the patients (n=6) considered
36
37 CIPN still present and a “major problem”. Patients described a “very high burden” due to
38
39 CIPN in 23%, and a “high burden” in another 23%. For 45% of the patients, CIPN was
40
41 “tolerable and modest”, whereas only 9% considered it “harmless” (data not shown).
42
43
44
45

46 Outcome

47
48
49 Information on outcome is limited by the small number of study patients. Consequently, we
50
51 observed no significant differences in response rates at mobilization and 100 days after
52
53 ASCT when comparing patients with and without CIPN before ASCT. Eight of all 24 study
54
55 patients so far had a relapse after ASCT, with the median relapse-free survival being not yet
56
57 reached after a median follow-up of 31 months. The relapse-free survival two years after
58
59
60

1
2
3 ASCT was 72%. **Figure 1A** depicts the relapse-free survival (RFS) of the entire study cohort,
4 and **Figure 1B** indicates the overall survival (OS). Two patients died so far, after 10 and 13
5 months, in both cases due to myeloma progression. Again, the median survival of the entire
6 study cohort was not yet reached, and the median overall survival after two years was 92%.
7
8
9
10
11
12
13
14
15
16
17
18
19
20
21
22
23
24
25
26
27
28
29
30
31
32
33
34
35
36
37
38
39
40
41
42
43
44
45
46
47
48
49
50
51
52
53
54
55
56
57
58
59
60

For Peer Review Only

DISCUSSION

Bortezomib based regimens for first-line induction treatment have improved remission and survival rates in myeloma patients and have become standard of care (Richardson *et al*, 2003; Sonneveld *et al*, 2013). However, chemotherapy-induced polyneuropathy (CIPN) is a major and often limiting side effect of bortezomib (Argyriou *et al*, 2008; Delforge *et al*, 2010; Keller *et al*, 2015; Koeppen *et al*, 2014; Mohty *et al*, 2010; Richardson *et al*, 2006). In our study cohort, 88% of myeloma patients treated with subcutaneous bortezomib developed clinical signs of neuropathy of any grade which led in 16% to prolongation of treatment intervals or discontinuation of bortezomib treatment. The majority of the patients had sensory deficits which is consistent with previous reports on bortezomib inducing a dose-related peripheral, mainly sensory polyneuropathy with accompanying neuropathic pain (Argyriou *et al*, 2008; Delforge *et al*, 2010; Keller *et al*, 2015; Koeppen *et al*, 2014; Mohty *et al*, 2010; Richardson *et al*, 2006). Thus, optimized concepts for the prevention and treatment of bortezomib induced CIPN are obviously essential for myeloma patients, and such strategies involve subcutaneous application, the once weekly administration, and timely discontinuation at early signs of neuropathy to enable reversibility of symptoms (Argyriou *et al*, 2008; Cavaletti *et al*, 2010; Stubblefield *et al*, 2009).

Bortezomib associated CIPN is significantly affecting the quality of life of myeloma patients. The majority (63%) of myeloma patients affected by CIPN in our study considered the burden of CIPN as “high” or “very high”, and more than half of the patients with CIPN failed to completely recover from CIPN, with 31% reporting unchanged persisting CIPN after completion of HDCT treatment.

Based on these considerations, we evaluated an alternative chemomobilization approach after bortezomib induction. Traditionally, the standard strategy in Switzerland to mobilize peripheral autologous stem cells in myeloma patients is a single-dose of 35 mg/m² vinorelbine, with G-CSF stimulation initiated four days later (Bargetzi *et al*, 2003; Heizmann *et al*, 2009; Samaras *et al*, 2015; Schmid *et al*, 2015). This non-myelosuppressive concept

1
2
3 allows a highly reliable and efficient stem cell collection at day 8. This concept has been
4
5 challenged in the last years with the predominant use of bortezomib during induction
6
7 treatment and with bortezomib induced polyneuropathy (CIPN) as its major side effect. The
8
9 vinca-alkaloid vinorelbine is mediating additional neurotoxicity (Capasso *et al*, 2012; Galano
10
11 *et al*, 2011; Lobert *et al*, 1996), involving hypoesthesia, hyporeflexia, paresthesia and pain,
12
13 but also motoric or autonomic axons can be damaged, which is similar to the neurotoxic
14
15 profile of bortezomib (Capasso *et al*, 2012; Galano *et al*, 2011; Lobert *et al*, 1996). In fact, we
16
17 previously reported that a single dose of vinorelbine can significantly aggravate bortezomib
18
19 induced CIPN - or induce first manifestation of CIPN - in bortezomib pretreated myeloma
20
21 patients (Keller *et al*, 2015). These observations formed the basis of our study to evaluate an
22
23 alternative chemomobilization approach while preserving the advantages of a non-
24
25 myelosuppressive strategy.
26

27
28 Gemcitabine is a promising candidate for chemomobilization. It has been studied so
29
30 far as a component of a polychemotherapy mobilization strategy in relapsed Hodgkin
31
32 lymphoma patients and has been considered both safe and effective (Suyani *et al*, 2011).
33
34 However, it has not been used so far as monochemotherapy for mobilization of autologous
35
36 stem cells. We found that a single dose of 1250mg/m² gemcitabine – together with G-CSF
37
38 stimulation started at day 4 after gemcitabine – was effective to allow the collection of
39
40 autologous stem cells in all 24 study patients. Consequently, all patients proceeded to
41
42 subsequent high-dose chemotherapy treatment and enjoyed timely hematologic recovery
43
44 and no unexpected infectious or toxic complications. Importantly, we did not observe
45
46 significant aggravation of bortezomib-induced CIPN - or first occurrence of CIPN - in
47
48 bortezomib-pretreated myeloma patients following the administration of gemcitabine. These
49
50 observations suggest that gemcitabine can safely replace vinorelbine for chemomobilization
51
52 of autologous stem cells in bortezomib-pretreated myeloma patients.
53

54
55 High-dose cyclophosphamide chemotherapy with G-CSF represents the most
56
57 commonly used chemomobilization regimen. Our data suggest that the combination of G-
58
59 CSF with a single dose of non-myelosuppressive chemotherapy with gemcitabine compares
60

1
2
3 favorably to cyclophosphamide mobilization because of its reliable and predictable collection
4 rate at day 8, the strictly ambulatory setting, and the lack of febrile complications notoriously
5 associated with cyclophosphamide mobilization.
6
7

8
9 We undertook considerable efforts to identify CIPN during induction and mobilization
10 chemotherapy, but also during high-dose chemotherapy and lenalidomide maintenance
11 treatment. All patients were clinically monitored for the development and assessment of the
12 severity of CIPN, and patients also reported their observations using a standardized
13 questionnaire. The finding of 88% of all patients showing signs of CIPN after bortezomib
14 induction treatment in this small study appears high compared to other larger series. Thus, a
15 by chance effect due to the small sample size may have contributed to this high incidence.
16 However, our study points to the possibility that CIPN may remain unrecognized by both
17 treating physicians and patients unaware of the variety of CIPN symptoms.
18
19
20
21
22
23
24
25
26

27 We observed one patient with aggravation of bortezomib-induced CIPN (from grade I
28 to II) after gemcitabine, one patient after high-dose melphalan chemotherapy, and two
29 patients under lenalidomide maintenance treatment. These observations underline the
30 concept that gemcitabine mobilization, high-dose melphalan and lenalidomide maintenance
31 are not neurotoxic myeloma treatments, and the rare observation of novel neuropathy in
32 bortezomib-pretreated patients suggests the possibility of other mechanisms. Recently, late
33 onset of previously not overt bortezomib induced polyneuropathy was observed, emerging
34 mainly during or shortly after peripheral blood stem cell (PBSC) collection (Tacchetti *et al*,
35 2014). A coasting phenomenon of bortezomib was suggested rather than an effect of
36 compounds used between bortezomib-based induction treatment and PBSC collection
37 (Tacchetti *et al*, 2014). Possibly, such late occurrence of bortezomib toxicity may have been
38 involved in the few patients with CIPN occurring after discontinuation of beortezomib
39 treatment.
40
41
42
43
44
45
46
47
48
49
50
51
52

53 We identified a slow recovery rate from bortezomib triggered polyneuropathy. In fact,
54 half of all affected patients continued to suffer from symptoms of disabling CIPN after
55 completion of HDCT treatment. Previous reports suggested that bortezomib (or vinorelbine-)
56
57
58
59
60

1
2
3 induced neuropathy was predominantly reversible after drug discontinuation within two to
4 four months (Argyriou *et al*, 2008; Koeppen *et al*, 2014; Mohty *et al*, 2010). In contrast,
5
6 improvement of CIPN in our cohort remained incomplete in a significant proportion of
7
8 patients. In the absence of effective treatment modalities for CIPN, prevention of severe
9
10 CIPN remains an important goal of induction treatment in myeloma patients (Cavaletti *et al*,
11
12 2010; Mantyh *et al*, 2006; Stubblefield *et al*, 2009).

13
14
15 This study was not powered to evaluate the effect of the development of CIPN on
16
17 response and survival rates. In fact, we observed no differences in response and survival
18
19 rates between myeloma patients with and without CIPN. However, developing CIPN can
20
21 affect dosing, duration and the chemotherapy composition of later myeloma treatment
22
23 thereby affecting response to treatment (Cavaletti *et al*, 2010; Mantyh *et al*, 2006;
24
25 Stubblefield *et al*, 2009). Consequently, longer follow-up of a larger cohort may be required
26
27 to ultimately provide answers to these issues. However, our data suggest that gemcitabine
28
29 represents a promising alternative candidate to replace neurotoxic vinorelbine
30
31 chemomobilization. Consequently, we initiated a randomized prospective trial comparing
32
33 vinorelbine and gemcitabine mobilization chemotherapy in myeloma patients, and this trial
34
35 may ultimately identify a novel role for gemcitabine as a non-neurotoxic and effective stem
36
37 cell mobilization regimen in myeloma patients.
38
39
40
41
42
43
44
45
46
47
48
49
50
51
52
53
54
55
56
57
58
59
60

ACKNOWLEDGEMENTS

We wish to thank Marion Bleckmann, Barbara Muster and Irene Briner for help with stem cell data collection, Myriam Legros for providing CD34+ data, and Anke Klingenberg-Rettich and Doris Jaeggi for help with data collection on clinical outcome.

CONTRIBUTIONS

Performed research, analyzed data and wrote the paper (BUM);
performed research, read and approved the final version of the manuscript (SK);
contributed vital material, read and approved the final version of the manuscript (BMT);
analyzed data, read and approved the final version of the manuscript (KS);
contributed vital material, read and approved the final version of the manuscript (DR);
contributed vital material, read and approved the final version of the manuscript (DB);
contributed vital material, read and approved the final version of the manuscript (TE);
designed research, analyzed data and wrote the paper (TP).

FUNDINGS

This work was supported by a grant from the Bernische Stiftung für Klinische Krebsforschung (to TP), from the Krebsliga Bern (to TP), and from the EMPIRIS Foundation/Ursula-Hecht-Fonds (to TP).

CONFLICT OF INTEREST

The authors declare no conflict of interest.

REFERENCES

Argyriou AA, Iconomou G, Kalofonos HP (2008) Bortezomib-induced peripheral neuropathy in multiple myeloma: a comprehensive review of the literature. *Blood* **112**: 1 - 11.

Bargetzi MJ, Passweg J, Baertschi E, Schoenenberger A, Gwerder C, Tichelli A, Burger J, Mingrone W, Herrmann R, Gratwohl A, Wernli M (2003) Mobilization of peripheral blood progenitor cells with vinorelbine and granulocyte colony-stimulating factor in multiple myeloma patients is reliable and cost effective. *Bone Marrow Transplant* **31**: 99 - 103.

Blade J, Rosinol L, Sureda A, Ribera JM, Mediavilla J, Garcia-Larana J, Mateos MV, Palomera L, Fernandez-Calvo J, Marti JM, Giraldo P, Carbonell F, Callis M, Trujillo J, Gardella S, Moro MJ, Barez A, Soler A, Font L, Fontanillas M, San MJ (2005) High-dose therapy intensification compared with continued standard chemotherapy in multiple myeloma patients responding to the initial chemotherapy: long-term results from a prospective randomized trial from the Spanish cooperative group PETHEMA. *Blood* **106**: 3755 – 3759.

Capasso A (2012) Vinorelbine in cancer therapy. *Current Drug Targets* **13**: 1065 - 1071.

Carlson K, Ocean AJ (2011) Peripheral neuropathy associated with microtubule-targeting agents: occurrence and management approach. *Clinical Breast Cancer* **11**: 73 - 81.

Cavaletti G, Jakubowiak AJ (2010) Peripheral neuropathy during bortezomib treatment of multiple myeloma: a review of recent studies. *Leuk Lymphoma* **51**: 1178 - 1187.

Delforge M, Bladé J, Dimopoulos MA, Facon T, Kropff M, Ludwig H, Palumbo A, Van Damme P, San-iguel JF, Sonneveld P (2010) Treatment-related peripheral neuropathy in multiple myeloma: the challenge continues. *Lancet Oncol* **11**: 1086 – 1095.

Fernand JP, Katsahian S, Divine M, Leblond V, Dreyfus F, Macro M, Arnulf B, Royer B, Mariette X, Pertuiset E, Belanger C, Janvier M, Chevret S, Brouet JC, Ravaud P (2005) High-dose therapy and autologous blood stem-cell transplantation compared with conventional treatment in myeloma patients aged 55 to 65 years: long-term results of a randomized control trial from the Group Myeloma Autogreffe. *J Clin Oncol* **23**: 9227 - 9233.

Galano G, Caputo M, Tecce MF, Capasso A (2011) Efficacy and Tolerability of Vinorelbine in the Cancer Therapy. *Current Drug Safety* **6**: 185 - 193.

Giralt S, Stadtmauer EA, Harousseau JL, Palumbo A, Bensinger W, Comenzo RL, Kumar S, Munshi NC, Dispenzieri A, Kyle R, Merlini G, San Miguel J, Ludwig H, Hajek R, Jagannath S,

1
2
3 Blade J, Lonial S, Dimopoulos MA, Einsele H, Barlogie B, Anderson KC, Gertz M, Attal M,
4 Tosi P, Sonneveld P, Boccadoro M, Morgan G, Sezer O, Mateos MV, Cavo M, Joshua D,
5 Turesson I, Chen W, Shimizu K, Powles R, Richardson PG, Niesvizky R, Rajkumar SV,
6 Durie BG (2009) International myeloma working group (IMWG) consensus statement and
7 guidelines regarding the current status of stem cell collection and high-dose therapy for
8 multiple myeloma and the role of plerixafor (AMD 3100). *Leukemia* **23**: 1904 – 1912.

9
10
11
12
13 Harousseau JL, Moreau P (2009) Autologous hematopoietic stem-cell transplantation for
14 multiple myeloma. *N Engl J Med* **360**: 2645 – 2654.

15
16
17 Heizmann M, O'Meara AC, Moosmann PR, Heijnen IA, Zuberbühler M, Fernandez P, Burger
18 J, Huber A, Wernli M, Bargetzi MJ (2009) Efficient mobilization of PBSC with vinorelbine/G-
19 CSF in patients with malignant lymphoma. *Bone Marrow Transplant* **44**: 75 – 79.

20
21
22 Keller S, Seipel K, Novak U, Mueller BU, Taleghani BM, Leibundgut K, Pabst T (2015)
23 Neurotoxicity of stem cell mobilization chemotherapy with vinorelbine in myeloma patients
24 after bortezomib treatment. *Leuk Res* accepted.

25
26
27
28 Koeppen S (2014) Treatment of Multiple Myeloma: Thalidomide-, bortezomib-, and
29 lenalidomide-induced peripheral neuropathy. *Oncol Res Treat* **37**: 506 - 513.

30
31
32 Lobert S, Vulevic B, Correia JJ (1996) Interaction of vinca alkaloids with tubulin: a
33 comparison of vinblastin, vincristine, and vinorelbine. *Biochemistry* **31**: 5374 - 5380.

34
35
36 Ludwig H, Beksac M, Bladé J, Boccadoro M, Cavenagh J, Cavo M, Dimopoulos M, Drach J,
37 Einsele H, Facon T, Goldschmidt H, Harousseau JL, Hess U, Ketterer N, Kropff M,
38 Mendeleeva L, Morgan G, Palumbo A, Plesner T, San Miguel J, Shpilberg O, Sondergeld P,
39 Sonneveld P, Zweegman S (2010) Current Multiple Myeloma Treatment Strategies with
40 Novel Agents: A European Perspective. *The Oncologist* **15**: 6 - 25.

41
42
43
44
45 Mantyh PW (2006) Cancer pain and its impact on diagnosis, survival and quality of life.
46 *Nature Rev Neuroscience* **7**: 797 – 809.

47
48
49 Mohty B, El-Cheikh J, Yakoub-Agha I, Moreau P, Harousseau JL, Mohy M (2010) Peripheral
50 neuropathy and new treatments for multiple myeloma: background and practical
51 recommendations. *Haematologica* **95**: 311 - 319.

52
53
54
55
56 Rajkumar SV (2011) Multiple myeloma: 2012 update on diagnosis, risk-stratification, and
57 management. *American J Hemat* **87**: 79 - 88.

1
2
3 Richardson PG, Barlogie B, Berenson J, Singhai S, Jagannath S, Irwin D, Rajkumar SV,
4 Srkalovic G, Alsina M, Alexanian R, Siegel D, Orlowski RZ, Kuter D, Limentani SA, Lee S,
5 Hideshima T, Esseltine DL, Kauffman M, Adams J, Schenkeln DP, Anderson KC (2003) A
6 phase 2 study of bortezomib in relapsed, refractory myeloma. *N Engl J Med* **348**: 2609 –
7 2617.
8
9

10
11 Richardson PG, Briemberg H, Jagannath S, Wen PY, Barlogie B, Berenson J, Singhai S,
12 Siegel DS, Irwin D, Schuster M, Srkalovic G, Alexanian R, Rajkumar SV, Limentani S, Alsina
13 M, Orlowski RZ, Najarian K, Esseltine D, Anderson KC, Amato AA (2006) Frequency,
14 characteristics, and reversibility of peripheral neuropathy during treatment of advanced
15 multiple myeloma with bortezomib. *J Clin Oncol* **24**: 3113 – 3120.
16
17

18
19
20 Samaras P, Pfrommer S, Seifert B, Petrausch U, Mischo A, Schmidt A, Bargetzi M (2015)
21 Efficacy of vinorelbine plus G-CSF for CD34+ hematopoietic progenitor cell mobilization in
22 patients with multiple myeloma. *Biol Blood Marrow Transplant* **21**: 74 – 80.
23
24

25
26 Schmid A, Friess D, Mansouri Taleghani B, Keller P, Mueller BU, Baerlocher GM, Leibundgut
27 K, Pabst T (2015) Role of plerixafor in autologous stem cell mobilization with vinorelbine
28 chemotherapy and granulocyte-colony stimulating factor in patients with myeloma: a phase II
29 study (PAV-trial). *Leuk Lymphoma* **56**: 608-614.
30
31

32
33 Sonneveld P, Goldschmidt H, Rosinol L, Bladé J, Lahuerta JJ, Cavo M, Tacchetti P, Zamagni
34 E, Attal M, Lokhorst HM, Desai A, Cakana A, Liu K, van de Velde H, Eseltine D, Moreau P
35 (2013) Bortezomib-based versus nonbortezomib-based induction treatment before
36 autologous stem-cell transplantation in patients with previously untreated multiple myeloma:
37 a meta-analysis of phase III randomized, controlled trials. *J Clin Oncol* **31**: 3279 - 3288.
38
39

40
41 Stubblefield MD, Burstein HJ, Burton AW, Custodio CM, Deng GE, Ho M, Junck L, Stephen
42 Morris G, Paice JA, Tummala S, Von Roenn JH (2009) NCCN Task force report:
43 management of neuropathy in cancer. *J Natl Compr Canc Netw* **7**: 1 – 26.
44
45

46
47 Suyani E, Sucak GT, Aki SZ, Yegin ZA, Özkurt ZN, Yagci M (2011) Gemcitabine and
48 vinorelbine combination is effective in both as a salvage and mobilization regimen in
49 relapsed or refractory Hodgkin lymphoma prior to ASCT. *Ann Hematol* **90**: 658 – 691.
50
51

52
53 Swain SM, Arezzo JC (2008) Neuropathy associated with microtubule inhibitors: diagnosis,
54 incidence, and management. *Clin Adv Hematol Oncol* **6**: 455 - 467.
55

56
57 Tacchetti P, Terragna C, Galli M, Zamagni E, Petrucci MT, Pezzi A, Montefusco V, Martello
58 M, Tosi P, Baldini L, Pecatori J, Ruggieri M, Pantani L, Lazzaro A, Elice F, Rocchi S,
59
60

1
2
3 Gozzetti A, Palumbo A, Cavaletti G, Cavo M (2014) Bortezomib- and thalidomide-induced
4 peripheral neuropathy in multiple myeloma: clinical and molecular analyses of a phase 3
5 study. *American J Hemat* **89**: 1085-1091.
6
7
8
9
10
11
12
13
14
15
16
17
18
19
20
21
22
23
24
25
26
27
28
29
30
31
32
33
34
35
36
37
38
39
40
41
42
43
44
45
46
47
48
49
50
51
52
53
54
55
56
57
58
59
60

For Peer Review Only

1
2
3 **TITLES AND LEGENDS TO FIGURES**
4
5
6

7 **Figure 1: A)** Kaplan-Meier curves are depicted for the relapse-free survival (RFS) and **B)** for
8
9 the overall survival (OS) of the entire study cohort.
10
11
12
13
14
15
16
17
18
19
20
21
22
23
24
25
26
27
28
29
30
31
32
33
34
35
36
37
38
39
40
41
42
43
44
45
46
47
48
49
50
51
52
53
54
55
56
57
58
59
60

For Peer Review Only

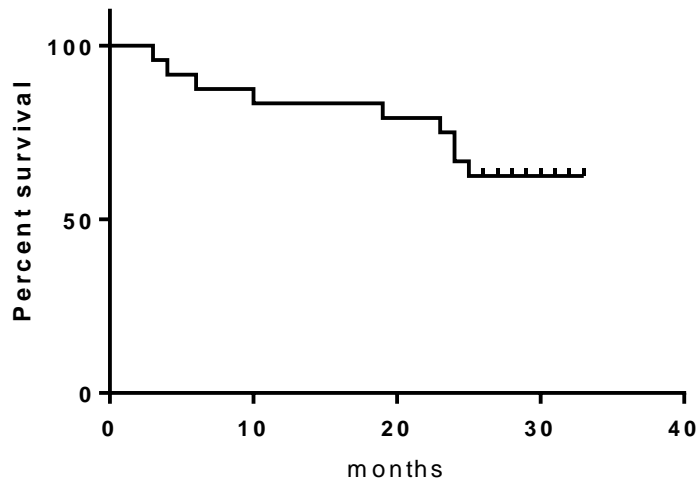
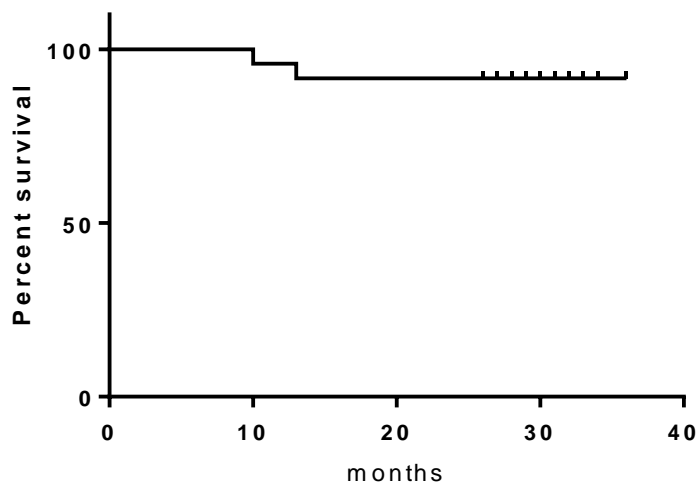
Figure 1**A) Relapse-free survival****B) Overall survival**

Table 1 - Patient characteristics

		n = 24
age at diagnosis; median (y ^a , range)		61 (52-70)
sex, m/f; n (%)		13/11 (54/46)
IgG n (%)		12 (50)
IgA n (%)		7 (29)
IgD n (%)		1 (4)
light-chain only		3 (13)
asecretory		1 (4)
kappa		12 (50)
lambda		12 (50)
stage Durie & Salmon I		8 (33)
	II	7 (29)
	III	9 (38)
	A	17 (71)
	B	7 (29)
Stage ISS I		8 (33)
	II	7 (29)
	III	9 (38)
FISH/cytogenetics ^b : not done		7 (29)
	trisomies	12 (50)
	tetrasomy 9	1 (4)
	deletion 1q	2 (8)
	deletion 13q	6 (24)
	deletion 17p	5 (20)
	monosomy 4	1 (4)
	monosomy 14	1 (4)
	t(4;14)	2 (8)
	t(14;18)	1 (4)
	t(14;16)	3 (13)
Induction treatment		
bortezomib/dexamethason-based (VD)		24 (100)
	+ cyclophosphamide (VCD)	16 (68)
	+ anthracyclin (PAD)	2 (8)
	+ thalidomide (VTD)	2 (8)
	+ lenalidomide (RVD)	2 (8)
	VD	2 (8)
cycles, median (mean)		4 (3.67)
	range	2 - 6
second induction regimen		0 (0)
maintenance treatment: none		9 (37)
	with lenalidomide	15 (63)
	duration months, median (mean)	12 (14)
	range	2-24

^ay: years; ^b7 patients had multiple findings.

Table 2: Mobilization and transplantation.

gemcitabine chemotherapy + G-CSF, n (%)	24 (100)
one day of apheresis	19 (79)
two days of apheresis	5 (21)
1st apheresis at day 8	16 (67)
1st apheresis at day 9	7 (29)
1st apheresis at day 10	1 (4)
median (mean)	8 (8.38 ± 0.57)
duration of apheresis, mean, minutes	269.71 ± 91.27
median, minutes (range)	285 (70 - 420)
mean blood volume processed, liters	26.2
median, liters (range)	25.3 (13.5 - 33.9)
leukocytes at apheresis ^a , mean (G/l)	33.80 ± 12.94
median (range)	34.4 (7.90 - 55.6)
peripheral CD34-Wert at apheresis ^a	
mean (x 10 ⁹ / ml PB)	56.3 ± 38.1
median, x 10 ⁶ / ml PB (range)	50.5 (4.4-122.4)
% CD34 leukocytes at apheresis ^a	
mean	0.19 ± 0.32
median (range)	0.14 (0.02 - 0.68)
total collected CD34+ x 10 ⁶ / kg b.w. ^d	
mean	10.09 ± 6.61
median (range)	9.51 (4.95 - 19.2)
patients with > 5 x 10 ⁶ / kg CD34+ cells after the 1 st day of apheresis transfused CD34+ x 10 ⁶ / kg b.w. ^d	23 (96)
mean	3.51 ± 0.97
median (range)	3.4 (2.0 - 5.4)
first day of ANC ^b > 0,5x10 ⁹ /L - n (%)	
day 11	14 (58)
day 12	9 (38)
day 13	1 (4)
mean	11.46 ± 0.58
median (range)	11 (11 - 13)
first day of Plts ^c > 20x10 ⁹ /L - n (%)	
days 10-12	5 (21)
day 13	8 (33)
days 14-15	9 (38)
>day 15	2 (8)
mean	13.63 ± 2.27
median (range)	13 (9 - 21)
first day of Plts ^c > 100x10 ⁹ /L - n (%)	
≤ day 20	13 (54)
days 20-30	8 (33)
>day 30	3 (12)
mean	22.04 ± 5.88
median (range)	20 (15 - 40)

^a at the first day of apheresis; ^b ANC: absolute neutrophil count; ^c Plts: platelets; in the absence for transfusions in the previous three days; ^d b.w.: body weight.

Table 3: Outcome

Remission status at transplantation	
stable disease	1 (4)
partial remission	10 (42)
very good partial remission	12 (50)
complete remission	1 (4)
100 days after transplant	
complete remission	13 (54)
not in complete remission	11 (46)
Relapse, n (%)	8 (33)
Death due to progression, n (%) ^a	2 (8)
Follow-up, mean, months	26 ± 4.82
median (range)	31 (26-36)

^a Two patients died, both due to myeloma progression.

Table 4: Peripheral neuropathy (PN).

preexisting PN at first diagnosis ^c	1 (4)
first occurrence during induction	21 (88)
duration until occurrence, weeks, mean	6.88 ± 3.04
first occurrence at mobilization	0 (0)
worsening of PN at mobilization	1 (4)
first occurrence at high-dose treatment	0 (0)
worsening of PN at high-dose treatment	1 (4)
first occurrence during maintenance	0 (0)
worsening of PN during maintenance	2 (8)
sensory PN ^{b, d}	15 (68)
I / II	10 (48)
III / IV	5 (20)
motory PN ^{b, d}	7 (28)
I / II	7 (28)
III / IV	0 (0)
Ataxia ^{b, d}	2 (8)
I / II	2 (8)
III	0 (0)
PN disappeared at day 100 ^a	3 (14)
PN disappeared later	9 (41)
mean, months	5.56 ± 1.34
median (range), months	5 (4 - 9)
PN improved, but still present	4 (18)
PN present and still a major problem	6 (27)
Subjective burden of disease: high	5 (23)
rather high	5 (23)
modest	10 (45)
harmless	2 (9)

^a At 100 days after high-dose chemotherapy; ^b three patients had more than one quality of PN; ^c PN: polyneuropathy; ^d maximum degree observed.

1
2
3 **Stem cell mobilization chemotherapy with gemcitabine is effective and**
4
5 **safe in myeloma patients with bortezomib induced neurotoxicity.**
6
7
8
9

10
11 **AUTHORS:** ¹Beatrice U. Mueller, ²Sandra Keller, ¹Katja Seipel, ³Behrouz Mansouri
12 Taleghani, ⁴Daniel Rauch, ⁵Daniel Betticher, ⁶Thomas Egger, ²Thomas Pabst.
13
14

15
16
17 **AFFILIATIONS:** ¹Department of Clinical Research, University of Berne; Berne, Switzerland;
18 ²Department of Medical Oncology, University Hospital of Berne; Berne, Switzerland;
19 ³Department of Hematology, University Hospital of Berne; Berne, Switzerland; ⁴Department
20 of Oncology; Kantonsspital; Thun, Switzerland; ⁵Department of Oncology; Kantonsspital;
21 Fribourg, Switzerland; and ⁶Department of Oncology; Kantonsspital; Solothurn, Switzerland.
22
23
24
25
26
27

28 **RUNNING HEAD:** Gemcitabine for mobilization in myeloma.
29
30
31
32

33 **ABBREVIATIONS:** MM: multiple myeloma; HDCT: high-dose chemotherapy; ASCT:
34 autologous stem cell transplantation; G-CSF: granulocyte-colony stimulating factor; PN:
35 peripheral neuropathy; CIPN: chemotherapy-induced peripheral neuropathy; BIPN:
36 bortezomib-induced peripheral neuropathy; OS: overall survival; PFS: progression-free
37 survival.
38
39
40
41
42

43 **MANUSCRIPT DETAILS:** abstract: 199 words (200 allowed); manuscript word count: 2832
44 words (3'000 allowed); 4 tables; 1 figure; no supplemental material; 27 references.
45
46
47
48

49 **CORRESPONDING AUTHOR:** Thomas Pabst MD; Associate Professor; Department of
50 Medical Oncology; University Hospital; Berne; Switzerland. Phone: ++41 31 632 8430; fax:
51 ++41 31 632 3410; Email: thomas.pabst@insel.ch.
52
53
54
55
56
57
58
59
60

SUMMARY

Background: Vinorelbine chemotherapy with G-CSF stimulation is a widely applied non-myelosuppressive mobilization regimen in Switzerland for myeloma patients, but its neurotoxic potential limits its use in patients with bortezomib induced polyneuropathy.

Methods: In this single-center study, we alternatively evaluated safety and effectiveness of gemcitabine chemotherapy with G-CSF for mobilization of autologous stem cells.

Results: Between 03/2012 and 02/2013, all bortezomib pretreated myeloma patients planned to undergo first-line high-dose melphalan chemotherapy received a single dose of 1250mg/m² gemcitabine, with G-CSF started on day four. The 24 patients in this study have received a median of four cycles of bortezomib-dexamethason based induction. Bortezomib-caused polyneuropathy was identified in 21 patients (88%) by clinical evaluation and a standardized questionnaire. Administration of gemcitabine mobilization did not induce novel or aggravate preexisting neuropathy. Stem cell mobilization was successful in all 24 patients, with a single day of apheresis being sufficient in 19 patients (78%). The median yield was 9.51×10^6 CD34+ cells/kg. Stem collection could be accomplished at day 8 in 67%.

Conclusion: Our data suggest that single-dose gemcitabine together with G-CSF is an effective mobilization regimen in myeloma patients and a safe alternative non-myelosuppressive mobilization chemotherapy for myeloma patients with bortezomib induced polyneuropathy.

KEY WORDS: mobilization; stem cells; myeloma; polyneuropathy; gemcitabine; bortezomib; neurotoxicity; autologous; transplant.

INTRODUCTION

Significant advances have been reported in the treatment of myeloma patients in the last decades. The introduction of proteasome inhibitors and immunomodulatory compounds for induction treatment, high-dose chemotherapy (HDCT) followed by autologous stem cell transplantation (ASCT) for consolidation, and subsequent maintenance treatment with lenalidomide or bortezomib have increased remission and survival rates in myeloma patients (Bladé *et al*, 2005; Fernand *et al*, 2005; Giralt *et al*, 2011; Harrousseau *et al*, 2009; Ludwig *et al*, 2010; Rajkumar, 2011). Noteworthy, a number of studies identified an independent benefit of first-line HDCT with ASCT also in the era of novel agents, which was further enhanced by maintenance treatment after HDCT (Bladé *et al*, 2005; Fernand *et al*, 2005; Giralt *et al*, 2011; Harrousseau *et al*, 2009). These observations indicate that ASCT continues to be a component of the first-line treatment algorithm for young and fit myeloma patients (Harrousseau *et al*, 2009; Ludwig *et al*, 2010).

The optimal strategy to mobilize autologous stem cells from the bone marrow to the peripheral blood remains an issue of ongoing controversy (Giralt *et al*, 2011). Repetitive applications of the granulocyte colony-stimulating factor (G-CSF) alone can effectively mobilize peripheral CD34+ cells, whereas the combination of G-CSF with chemotherapy is usually associated with a more potent recruitment of CD34+ cells from the bone marrow niche. The additional administration of the expensive stem cell mobilizing compound plerixafor represents a rescue strategy for patients failing such mobilization strategies.

Based on the considerations above, the combined use of chemotherapy and G-CSF is a widely used concept. While high-dose cyclophosphamide with G-CSF is commonly given for chemotherapy mobilization, the administration of a single dose of non-myelosuppressive chemotherapy with vinorelbine (35mg/m²) together with G-CSF started on day 4 is the standard mobilization regimen in Switzerland since more than a decade (Bargetzi *et al*, 2003; Heizmann *et al*, 2009; Samaras *et al*, 2015; Schmid *et al*, 2015). Its obvious advantages compared to cyclophosphamide treatment comprise a highly predictable stem cell collection

1
2
3 at day 8, the entirely ambulatory concept, and the lack of infectious and toxic complications
4
5 notoriously following cyclophosphamide mobilization (Bargetzi *et al*, 2003; Heizmann *et al*,
6
7 2009; Samaras *et al*, 2015; Schmid *et al*, 2015).

8
9 With the predominant use of bortezomib during induction treatment and with
10
11 chemotherapy-induced polyneuropathy (CIPN) as its major and often limiting side effect, the
12
13 subsequent use of vinorelbine for mobilization has become increasingly problematic because
14
15 of its added neurotoxicity (Argyriou *et al*, 2008; Carlson *et al*, 2011; Delforge *et al*, 2010;
16
17 Keller *et al*, 2015; Koeppen *et al*, 2014; Mohty *et al*, 2010; Richardson *et al*, 2006; Swain *et*
18
19 *al*, 2008). Clinically significant induction of novel - as well as aggravation of bortezomib
20
21 induced - CIPN following mobilization treatment with a single dose of vinorelbine in myeloma
22
23 patients has recently been reported by our group (Keller *et al*, 2015). These facts identified a
24
25 need for an alternative non-neurotoxic mobilization chemotherapy, while preserving the
26
27 advantages of a non-myelosuppressive strategy.

28
29 Gemcitabine has been previously used for stem cell mobilization as a part of
30
31 polychemotherapy regimens in Hodgkin lymphoma patients (Suyani *et al*, 2011). However,
32
33 its use as monochemotherapy for mobilization has not been reported so far. In this study, we
34
35 investigated the safety and effectiveness of gemcitabine together with G-CSF for the
36
37 mobilization of autologous stem cells in myeloma patients after bortezomib/dexamethasone-
38
39 based induction treatment.
40
41
42
43
44
45
46
47
48
49
50
51
52
53
54
55
56
57
58
59
60

PATIENTS AND METHODS

Patients and study design

This is a single-center prospective study analyzing all consecutive myeloma patients undergoing first-line consolidation treatment with high-dose melphalan chemotherapy (HDCT) and autologous stem cell transplantation (ASCT) between 03/2012 and 02/2013. Patients must have been treated with a bortezomib/dexamethasone-based induction regimen, the age needed to be below 71 years, and a minimum renal function with a kreatinin clearance of 40ml/min and neutrophils above 1.0 G/L were required. Clinical characteristics and treatment details of the patient cohort are depicted in **Table 1**. The local ethics committee of Berne, Switzerland with decision #143/2014 approved this study.

Data sources were medical records of the patients. Neuropathy was assessed by two independent investigators, with T.P. having been one of them for all study patients. In addition, a standardized questionnaire was filled out by all study patients. The questionnaire assessed signs and treatment of neuropathy as well as the subjective disease burden of chemotherapy induced polyneuropathy; it also helped to verify the information retrieved from the medical records. A 100% response rate was achieved.

Chemomobilization and autologous stem cell transplantation

Gemcitabine was administered to all patients as a 30 minute infusion at 1250 mg/m² on day 1, and filgrastim (G-CSF) was given subcutaneously at a dose of 1 Mio U/kg/day divided into two daily doses. G-CSF was started on day 4 and continued until (and including) the day of stem cell collection. Apheresis was triggered at the first day with more than 15'000 CD34+ cells/ml in the peripheral blood. **2 x 10⁶ CD34+ cells/kg was the minimum collection requirement, and we aimed to collect between 3-5 x 10⁶ CD34+ cells/kg per transplant, with usually two transplants being planned.** Cell processing procedures followed local standards. Patients received single-day high-dose chemotherapy with melphalan administered

1
2
3 intravenously at a dose of 200mg/m², with peripheral stem cell transplantation at the
4 following day.
5
6
7

8 9 **Definitions**

10
11 The two primary objectives of the study were safety and effectiveness of gemcitabine
12 mobilization treatment. We studied CIPN during induction, mobilization, high-dose and
13 maintenance treatment. We studied CIPN during induction, mobilization, high-dose and
14 maintenance treatment. We assessed incidence, severity, localization, and specific
15 treatment. CIPN was defined as gemcitabine-induced, when patients presented novel or
16 increased symptoms within two weeks after its administration. CIPN during bortezomib-
17 based induction treatment was identified when it occurred between the first bortezomib
18 administration and up to 30 days after the last dose. CIPN was assessed according to the
19 modified version of the National Cancer Institute Common Toxicity Criteria for Adverse
20 Events (NCI-CTCAE; version 4.03). We used the following categories: general sensory
21 neuropathy (paresthesia, dysesthesia, hypesthesia, hyperesthesia, hyporeflexia, hypalgesia,
22 and decreased temperature sensation); neuropathic pain; general motoric neuropathy
23 (muscle weakness); fasciculation (including tremor and spasm); and ataxia. We also
24 investigated the need for specific analgetic CIPN medication as well as modification or
25 interruption of myeloma specific treatment in order to control CIPN symptoms.
26
27
28
29
30
31
32
33
34
35
36
37
38
39
40
41
42

43 **Statistical analysis**

44
45 We applied descriptive statistics to calculate variables. We summarized the number of
46 observations, median and range for continuous variables, and we calculated the number and
47 percentage of patients in each category for categorical data. Nominal variables were
48 compared with Fisher exact tests. We used non-parametric Mann-Whitney-U tests for
49 continuous variables. The response rates were defined according to the IMWG criteria. OS
50 was the time from transplant until the date of death from any cause. PFS was the time from
51 transplant to first progression, relapse or death whichever occurred first. Patients without
52
53
54
55
56
57
58
59
60

1
2
3 progression or death were censored at their last follow-up. We designed time-to-event
4
5 estimates (PFS, OS) according to the Kaplan-Meier method using the log-rank (Mantel-Cox)
6
7 test. Data cut-off date was April 1, 2015. All p-values were two-sided, and a *P*-value of less
8
9 than .05 was considered statistically significant. We performed all analyses using the
10
11 GraphPadPrism software (Version 6.0b, GraphPad Software, Inc, San Diego, CA).
12
13
14
15
16
17
18
19
20
21
22
23
24
25
26
27
28
29
30
31
32
33
34
35
36
37
38
39
40
41
42
43
44
45
46
47
48
49
50
51
52
53
54
55
56
57
58
59
60

For Peer Review Only

RESULTS

Patients

Between 03/2012 and 02/2013, 24 consecutive myeloma patients at the University Hospital in Bern, Switzerland received bortezomib/dexamethasone-based first-line induction treatment and subsequent chemomobilization with gemcitabine and G-CSF as per protocol. The patient characteristics at diagnosis and additional information on the chemotherapy regimens are listed in **Table 1**. The median age at diagnosis of the patients in our cohort was 61 years (range 52-70 years). Patients mostly had IgG subtype (50%), whereas the type of light chains involved and ISS stages were equally distributed. FISH analyses was available in 17 patients (71%). All 24 patients received an induction treatment with bortezomib and dexamethasone (VD). In addition, two patients further received cyclophosphamide (VCD), two patients had doxorubicin (PAD), two patients were also treated with thalidomide (VTD), and two patients received lenalidomide (VRD), respectively.

Stem cell mobilization and transplantation

Detailed information on mobilization, stem cell collection and transplantation are summarized in **Table 2**. All patients received gemcitabine at the planned dose of 1250mg/m² at day 1. None of the patients experienced neutropenia < 0.5 G/L or thrombocytopenia < 50 G/L following gemcitabine treatment. **No bleeding complications and no febrile episodes requiring antibiotic treatment occurred. Two patients developed edema and weight gain requiring diuretic treatment. Ten of the 24 patients were hospitalized during the stem cell mobilization process, with all hospitalizations related to the application of a central venous catheter line for stem cell harvest, with a median hospitalization duration of two days, ranging from two to four days.** In 19 patients (79%), a single day of apheresis was sufficient to obtain the minimum number of > 2 x 10⁶ CD34+cells/kg, whereas five patients (21%) needed two days of stem cell collection. Apheresis was initiated after a median of 8 days (range 8 to 10 days)

1
2
3 after mobilization with gemcitabine. The total median duration of apheresis was 285 minutes,
4
5 with a range from 70 to 420 minutes. The median final collection of CD34+ cells was $9.51 \times$
6
7 10^6 cells/kg, with a range from 4.95 to 19.2. We found that more than 10×10^6 CD34+
8
9 cells/kg b.w. were collected in 54% of the patients. **Finally, none of the patients improved the**
10
11 **remission status following gemcitabine treatment.**

12
13 All patients in this study underwent subsequent high-dose chemotherapy with
14
15 200mg/m² melphalan, with peripheral stem cell transplantation at the following day. The
16
17 patients received a median of 3.4×10^6 CD34+ cells/kg (range 2.0 to 5.4). All patients had
18
19 successful engraftment. The median time to recovery was 11 days (range 11 to 13 days) for
20
21 neutrophils (ANC > 0.5 G/l), 13 days (range 9 to 21 days) for platelets > $20 \times 10^9/l$, and 20
22
23 days (range 15 to 40 days) for platelets > $100 \times 10^9/l$. Maintenance treatment after ASCT was
24
25 given in 15 patients (63%), with lenalidomide in all these patients.
26
27

28 29 30 **Chemotherapy induced polyneuropathy (CIPN)**

31
32
33 The incidence of CIPN during induction and mobilization treatment is summarized in **Table 3**.
34
35 In one patient (5%), polyneuropathy was pre-existing, most likely due to diabetes mellitus in
36
37 this patient. Evaluation of clinical assessment together with the patient questionnaire
38
39 indicated that any signs of clinical manifestation of CIPN during bortezomib-based induction
40
41 treatment occurred in 21 of 24 myeloma patients (88%). We found that the differences
42
43 observed in the total incidence of CIPN as documented by the treating physicians in their
44
45 medical charts compared to the data retrieved from individual questionnaires were not
46
47 significant ($P = .45$).
48

49
50 Symptoms of CIPN were first reported after a mean of 6.88 weeks of bortezomib
51
52 treatment. As depicted in **Table 4**, CIPN affected patients predominantly reported sensory
53
54 symptoms (68%), with grade I/II in 48% and grade III/IV in 20%. Motoric symptoms were
55
56 documented in 7 patients (28%), all being grade I or II. Ataxia was identified in two patients
57
58 (8%). Standard medication given for neuropathic pain involved pregabalin, gabapentin and
59
60

1
2
3 opioids. Finally, four patients (16%) of the patients needed bortezomib dose reduction,
4
5 prolongation of treatment interval or even interruption of therapy as a consequence of the
6
7 occurrence of bortezomib-induced CIPN. In two patients (8%), CIPN resulted in the
8
9 premature discontinuation of bortezomib treatment. However, none of the patients in this
10
11 study received a second line of chemotherapy, for whatever reason, before mobilization
12
13 treatment.

14
15 Noteworthy, we observed only one patient (4%) with worsening of bortezomib-
16
17 induced sensory CIPN (from grade I to II) during and following mobilization treatment with
18
19 gemcitabine. Also, a single patient (4%) reported worsening of bortezomib-induced sensory
20
21 CIPN (from grade I to II) following high-dose chemotherapy. During lenalidomide
22
23 maintenance treatment, two patients (8%) had worsening of CIPN (one patient from grade I
24
25 to II, and one patient from grade II to III) as summarized in **Table 4**.

26
27 Repetitive follow-up information on the course of CIPN was available for all patients.
28
29 Symptoms of CIPN resolved in 14% of all patients (n=3) until the day 100 assessment after
30
31 HDCT. In additional 9 (41%) patients, symptoms gradually improved over time with a median
32
33 time to disappearance of 5 months (range 4 to 9 months). However, 18% of the patients
34
35 (n=4) only had a partial improvement of CIPN, and 27% of the patients (n=6) considered
36
37 CIPN still present and a “major problem”. Patients described a “very high burden” due to
38
39 CIPN in 23%, and a “high burden” in another 23%. For 45% of the patients, CIPN was
40
41 “tolerable and modest”, whereas only 9% considered it “harmless” (data not shown).
42
43
44
45

46 47 **Outcome**

48
49 Information on outcome is limited by the small number of study patients. Consequently, we
50
51 observed no significant differences in response rates at mobilization and 100 days after
52
53 ASCT when comparing patients with and without CIPN before ASCT. Eight of all 24 study
54
55 patients so far had a relapse after ASCT, with the median relapse-free survival being not yet
56
57 reached after a median follow-up of 31 months. The relapse-free survival two years after
58
59
60

1
2
3 ASCT was 72%. **Figure 1A** depicts the relapse-free survival (RFS) of the entire study cohort,
4 and **Figure 1B** indicates the overall survival (OS). Two patients died so far, after 10 and 13
5 months, in both cases due to myeloma progression. Again, the median survival of the entire
6 study cohort was not yet reached, and the median overall survival after two years was 92%.
7
8
9
10
11
12
13
14
15
16
17
18
19
20
21
22
23
24
25
26
27
28
29
30
31
32
33
34
35
36
37
38
39
40
41
42
43
44
45
46
47
48
49
50
51
52
53
54
55
56
57
58
59
60

For Peer Review Only

DISCUSSION

Bortezomib based regimens for first-line induction treatment have improved remission and survival rates in myeloma patients and have become standard of care (Richardson *et al*, 2003; Sonneveld *et al*, 2013). However, chemotherapy-induced polyneuropathy (CIPN) is a major and often limiting side effect of bortezomib (Argyriou *et al*, 2008; Delforge *et al*, 2010; Keller *et al*, 2015; Koeppen *et al*, 2014; Mohty *et al*, 2010; Richardson *et al*, 2006). In our study cohort, 88% of myeloma patients treated with subcutaneous bortezomib developed clinical signs of neuropathy of any grade which led in 16% to prolongation of treatment intervals or discontinuation of bortezomib treatment. The majority of the patients had sensory deficits which is consistent with previous reports on bortezomib inducing a dose-related peripheral, mainly sensory polyneuropathy with accompanying neuropathic pain (Argyriou *et al*, 2008; Delforge *et al*, 2010; Keller *et al*, 2015; Koeppen *et al*, 2014; Mohty *et al*, 2010; Richardson *et al*, 2006). Thus, optimized concepts for the prevention and treatment of bortezomib induced CIPN are obviously essential for myeloma patients, and such strategies involve subcutaneous application, the once weekly administration, and timely discontinuation at early signs of neuropathy to enable reversibility of symptoms (Argyriou *et al*, 2008; Cavaletti *et al*, 2010; Stubblefield *et al*, 2009).

Bortezomib associated CIPN is significantly affecting the quality of life of myeloma patients. The majority (63%) of myeloma patients affected by CIPN in our study considered the burden of CIPN as “high” or “very high”, and more than half of the patients with CIPN failed to completely recover from CIPN, with 31% reporting unchanged persisting CIPN after completion of HDCT treatment.

Based on these considerations, we evaluated an alternative chemomobilization approach after bortezomib induction. Traditionally, the standard strategy in Switzerland to mobilize peripheral autologous stem cells in myeloma patients is a single-dose of 35 mg/m² vinorelbine, with G-CSF stimulation initiated four days later (Bargetzi *et al*, 2003; Heizmann *et al*, 2009; Samaras *et al*, 2015; Schmid *et al*, 2015). This non-myelosuppressive concept

1
2
3 allows a highly reliable and efficient stem cell collection at day 8. This concept has been
4
5 challenged in the last years with the predominant use of bortezomib during induction
6
7 treatment and with bortezomib induced polyneuropathy (CIPN) as its major side effect. The
8
9 vinca-alkaloid vinorelbine is mediating additional neurotoxicity (Capasso *et al*, 2012; Galano
10
11 *et al*, 2011; Lobert *et al*, 1996), involving hypoesthesia, hyporeflexia, paresthesia and pain,
12
13 but also motoric or autonomic axons can be damaged, which is similar to the neurotoxic
14
15 profile of bortezomib (Capasso *et al*, 2012; Galano *et al*, 2011; Lobert *et al*, 1996). In fact, we
16
17 previously reported that a single dose of vinorelbine can significantly aggravate bortezomib
18
19 induced CIPN - or induce first manifestation of CIPN - in bortezomib pretreated myeloma
20
21 patients (Keller *et al*, 2015). These observations formed the basis of our study to evaluate an
22
23 alternative chemomobilization approach while preserving the advantages of a non-
24
25 myelosuppressive strategy.
26

27
28 Gemcitabine is a promising candidate for chemomobilization. It has been studied so
29
30 far as a component of a polychemotherapy mobilization strategy in relapsed Hodgkin
31
32 lymphoma patients and has been considered both safe and effective (Suyani *et al*, 2011).
33
34 However, it has not been used so far as monochemotherapy for mobilization of autologous
35
36 stem cells. We found that a single dose of 1250mg/m² gemcitabine – together with G-CSF
37
38 stimulation started at day 4 after gemcitabine – was effective to allow the collection of
39
40 autologous stem cells in all 24 study patients. Consequently, all patients proceeded to
41
42 subsequent high-dose chemotherapy treatment and enjoyed timely hematologic recovery
43
44 and no unexpected infectious or toxic complications. Importantly, we did not observe
45
46 significant aggravation of bortezomib-induced CIPN - or first occurrence of CIPN - in
47
48 bortezomib-pretreated myeloma patients following the administration of gemcitabine. These
49
50 observations suggest that gemcitabine can safely replace vinorelbine for chemomobilization
51
52 of autologous stem cells in bortezomib-pretreated myeloma patients.
53

54
55 High-dose cyclophosphamide chemotherapy with G-CSF represents the most
56
57 commonly used chemomobilization regimen. Our data suggest that the combination of G-
58
59 CSF with a single dose of non-myelosuppressive chemotherapy with gemcitabine compares
60

1
2
3 favorably to cyclophosphamide mobilization because of its reliable and predictable collection
4 rate at day 8, the strictly ambulatory setting, and the lack of febrile complications notoriously
5 associated with cyclophosphamide mobilization.
6
7

8
9 We undertook considerable efforts to identify CIPN during induction and mobilization
10 chemotherapy, but also during high-dose chemotherapy and lenalidomide maintenance
11 treatment. All patients were clinically monitored for the development and assessment of the
12 severity of CIPN, and patients also reported their observations using a standardized
13 questionnaire. The finding of 88% of all patients showing signs of CIPN after bortezomib
14 induction treatment in this small study appears very high compared to other larger series,
15 Thus, a by chance effect due to the small sample size may have contributed to this high
16 incidence. However, our study points to the possibility that CIPN may remain unrecognized
17 by both treating physicians and patients unaware of the variety of CIPN symptoms.
18
19
20
21
22
23
24
25
26

27 We observed one patient with aggravation of bortezomib-induced CIPN (from grade I
28 to II) after gemcitabine, one patient after high-dose melphalan chemotherapy, and two
29 patients under lenalidomide maintenance treatment. These observations underline the
30 concept that gemcitabine mobilization, high-dose melphalan and lenalidomide maintenance
31 are not neurotoxic myeloma treatments, and the rare observation of novel neuropathy in
32 bortezomib-pretreated patients suggests the possibility of other mechanisms. Recently, late
33 onset of previously not overt bortezomib induced polyneuropathy was observed, emerging
34 mainly during or shortly after peripheral blood stem cell (PBSC) collection (Tacchetti *et al*,
35 2014). A coasting phenomenon of bortezomib was suggested rather than an effect of
36 compounds used between bortezomib-based induction treatment and PBSC collection
37 (Tacchetti *et al*, 2014). Possibly, such late occurrence of bortezomib toxicity may have been
38 involved in the few patients with CIPN occurring after discontinuation of beortezomib
39 treatment.
40
41
42
43
44
45
46
47
48
49
50
51
52

53 We identified a slow recovery rate from bortezomib triggered polyneuropathy. In fact,
54 half of all affected patients continued to suffer from symptoms of disabling CIPN after
55 completion of HDCT treatment. Previous reports suggested that bortezomib (or vinorelbine-)
56
57
58
59
60

1
2
3 induced neuropathy was predominantly reversible after drug discontinuation within two to
4 four months (Argyriou *et al*, 2008; Koeppen *et al*, 2014; Mohty *et al*, 2010). In contrast,
5
6 improvement of CIPN in our cohort remained incomplete in a significant proportion of
7
8 patients. In the absence of effective treatment modalities for CIPN, prevention of severe
9
10 CIPN remains an important goal of induction treatment in myeloma patients (Cavaletti *et al*,
11
12 2010; Mantyh *et al*, 2006; Stubblefield *et al*, 2009).

13
14
15 This study was not powered to evaluate the effect of the development of CIPN on
16
17 response and survival rates. In fact, we observed no differences in response and survival
18
19 rates between myeloma patients with and without CIPN. However, developing CIPN can
20
21 affect dosing, duration and the chemotherapy composition of later myeloma treatment
22
23 thereby affecting response to treatment (Cavaletti *et al*, 2010; Mantyh *et al*, 2006;
24
25 Stubblefield *et al*, 2009). Consequently, longer follow-up of a larger cohort may be required
26
27 to ultimately provide answers to these issues. However, our data suggest that gemcitabine
28
29 represents a promising alternative candidate to replace neurotoxic vinorelbine
30
31 chemomobilization. Consequently, we initiated a randomized prospective trial comparing
32
33 vinorelbine and gemcitabine mobilization chemotherapy in myeloma patients, and this trial
34
35 may ultimately identify a novel role for gemcitabine as a non-neurotoxic and effective stem
36
37 cell mobilization regimen in myeloma patients.
38
39
40
41
42
43
44
45
46
47
48
49
50
51
52
53
54
55
56
57
58
59
60

ACKNOWLEDGEMENTS

We wish to thank Marion Bleckmann, Barbara Muster and Irene Briner for help with stem cell data collection, Myriam Legros for providing CD34+ data, and Anke Klingenberg-Rettich and Doris Jaeggi for help with data collection on clinical outcome.

CONTRIBUTIONS

Performed research, analyzed data and wrote the paper (BUM);
performed research, read and approved the final version of the manuscript (SK);
contributed vital material, read and approved the final version of the manuscript (BMT);
analyzed data, read and approved the final version of the manuscript (KS);
contributed vital material, read and approved the final version of the manuscript (DR);
contributed vital material, read and approved the final version of the manuscript (DB);
contributed vital material, read and approved the final version of the manuscript (TE);
designed research, analyzed data and wrote the paper (TP).

FUNDINGS

This work was supported by a grant from the Bernische Stiftung für Klinische Krebsforschung (to TP), from the Krebsliga Bern (to TP), and from the EMPIRIS Foundation/Ursula-Hecht-Fonds (to TP).

CONFLICT OF INTEREST

The authors declare no conflict of interest.

REFERENCES

Argyriou AA, Iconomou G, Kalofonos HP (2008) Bortezomib-induced peripheral neuropathy in multiple myeloma: a comprehensive review of the literature. *Blood* **112**: 1 - 11.

Bargetzi MJ, Passweg J, Baertschi E, Schoenenberger A, Gwerder C, Tichelli A, Burger J, Mingrone W, Herrmann R, Gratwohl A, Wernli M (2003) Mobilization of peripheral blood progenitor cells with vinorelbine and granulocyte colony-stimulating factor in multiple myeloma patients is reliable and cost effective. *Bone Marrow Transplant* **31**: 99 - 103.

Blade J, Rosinol L, Sureda A, Ribera JM, Mediavilla J, Garcia-Larana J, Mateos MV, Palomera L, Fernandez-Calvo J, Marti JM, Giraldo P, Carbonell F, Callis M, Trujillo J, Gardella S, Moro MJ, Barez A, Soler A, Font L, Fontanillas M, San MJ (2005) High-dose therapy intensification compared with continued standard chemotherapy in multiple myeloma patients responding to the initial chemotherapy: long-term results from a prospective randomized trial from the Spanish cooperative group PETHEMA. *Blood* **106**: 3755 – 3759.

Capasso A (2012) Vinorelbine in cancer therapy. *Current Drug Targets* **13**: 1065 - 1071.

Carlson K, Ocean AJ (2011) Peripheral neuropathy associated with microtubule-targeting agents: occurrence and management approach. *Clinical Breast Cancer* **11**: 73 - 81.

Cavaletti G, Jakubowiak AJ (2010) Peripheral neuropathy during bortezomib treatment of multiple myeloma: a review of recent studies. *Leuk Lymphoma* **51**: 1178 - 1187.

Delforge M, Bladé J, Dimopoulos MA, Facon T, Kropff M, Ludwig H, Palumbo A, Van Damme P, San-iguel JF, Sonneveld P (2010) Treatment-related peripheral neuropathy in multiple myeloma: the challenge continues. *Lancet Oncol* **11**: 1086 – 1095.

Fernand JP, Katsahian S, Divine M, Leblond V, Dreyfus F, Macro M, Arnulf B, Royer B, Mariette X, Pertuiset E, Belanger C, Janvier M, Chevret S, Brouet JC, Ravaud P (2005) High-dose therapy and autologous blood stem-cell transplantation compared with conventional treatment in myeloma patients aged 55 to 65 years: long-term results of a randomized control trial from the Group Myeloma Autogreffe. *J Clin Oncol* **23**: 9227 - 9233.

Galano G, Caputo M, Tecce MF, Capasso A (2011) Efficacy and Tolerability of Vinorelbine in the Cancer Therapy. *Current Drug Safety* **6**: 185 - 193.

Giralt S, Stadtmauer EA, Harousseau JL, Palumbo A, Bensinger W, Comenzo RL, Kumar S, Munshi NC, Dispenzieri A, Kyle R, Merlini G, San Miguel J, Ludwig H, Hajek R, Jagannath S,

1
2
3 Blade J, Lonial S, Dimopoulos MA, Einsele H, Barlogie B, Anderson KC, Gertz M, Attal M,
4 Tosi P, Sonneveld P, Boccadoro M, Morgan G, Sezer O, Mateos MV, Cavo M, Joshua D,
5 Turesson I, Chen W, Shimizu K, Powles R, Richardson PG, Niesvizky R, Rajkumar SV,
6 Durie BG (2009) International myeloma working group (IMWG) consensus statement and
7 guidelines regarding the current status of stem cell collection and high-dose therapy for
8 multiple myeloma and the role of plerixafor (AMD 3100). *Leukemia* **23**: 1904 – 1912.

9
10
11
12 Harousseau JL, Moreau P (2009) Autologous hematopoietic stem-cell transplantation for
13 multiple myeloma. *N Engl J Med* **360**: 2645 – 2654.

14
15
16
17 Heizmann M, O'Meara AC, Moosmann PR, Heijnen IA, Zuberbühler M, Fernandez P, Burger
18 J, Huber A, Wernli M, Bargetzi MJ (2009) Efficient mobilization of PBSC with vinorelbine/G-
19 CSF in patients with malignant lymphoma. *Bone Marrow Transplant* **44**: 75 – 79.

20
21
22 Keller S, Seipel K, Novak U, Mueller BU, Taleghani BM, Leibundgut K, Pabst T (2015)
23 Neurotoxicity of stem cell mobilization chemotherapy with vinorelbine in myeloma patients
24 after bortezomib treatment. *Leuk Res* accepted.

25
26
27
28 Koeppen S (2014) Treatment of Multiple Myeloma: Thalidomide-, bortezomib-, and
29 lenalidomide-induced peripheral neuropathy. *Oncol Res Treat* **37**: 506 - 513.

30
31
32 Lobert S, Vulevic B, Correia JJ (1996) Interaction of vinca alkaloids with tubulin: a
33 comparison of vinblastin, vincristine, and vinorelbine. *Biochemistry* **31**: 5374 - 5380.

34
35
36 Ludwig H, Beksac M, Bladé J, Boccadoro M, Cavenagh J, Cavo M, Dimopoulos M, Drach J,
37 Einsele H, Facon T, Goldschmidt H, Harousseau JL, Hess U, Ketterer N, Kropff M,
38 Mendeleeva L, Morgan G, Palumbo A, Plesner T, San Miguel J, Shpilberg O, Sondergeld P,
39 Sonneveld P, Zweegman S (2010) Current Multiple Myeloma Treatment Strategies with
40 Novel Agents: A European Perspective. *The Oncologist* **15**: 6 - 25.

41
42
43
44 Mantyh PW (2006) Cancer pain and its impact on diagnosis, survival and quality of life.
45 *Nature Rev Neuroscience* **7**: 797 – 809.

46
47
48 Mohty B, El-Cheikh J, Yakoub-Agha I, Moreau P, Harousseau JL, Mohy M (2010) Peripheral
49 neuropathy and new treatments for multiple myeloma: background and practical
50 recommendations. *Haematologica* **95**: 311 - 319.

51
52
53
54 Rajkumar SV (2011) Multiple myeloma: 2012 update on diagnosis, risk-stratification, and
55 management. *American J Hemat* **87**: 79 - 88.

1
2
3 Richardson PG, Barlogie B, Berenson J, Singhai S, Jagannath S, Irwin D, Rajkumar SV,
4 Srkalovic G, Alsina M, Alexanian R, Siegel D, Orlowski RZ, Kuter D, Limentani SA, Lee S,
5 Hideshima T, Esseltine DL, Kauffman M, Adams J, Schenkeln DP, Anderson KC (2003) A
6 phase 2 study of bortezomib in relapsed, refractory myeloma. *N Engl J Med* **348**: 2609 –
7 2617.
8
9

10
11 Richardson PG, Briemberg H, Jagannath S, Wen PY, Barlogie B, Berenson J, Singhai S,
12 Siegel DS, Irwin D, Schuster M, Srkalovic G, Alexanian R, Rajkumar SV, Limentani S, Alsina
13 M, Orlowski RZ, Najarian K, Esseltine D, Anderson KC, Amato AA (2006) Frequency,
14 characteristics, and reversibility of peripheral neuropathy during treatment of advanced
15 multiple myeloma with bortezomib. *J Clin Oncol* **24**: 3113 – 3120.
16
17

18
19
20 Samaras P, Pfrommer S, Seifert B, Petrausch U, Mischo A, Schmidt A, Bargetzi M (2015)
21 Efficacy of vinorelbine plus G-CSF for CD34+ hematopoietic progenitor cell mobilization in
22 patients with multiple myeloma. *Biol Blood Marrow Transplant* **21**: 74 – 80.
23
24

25
26 Schmid A, Friess D, Mansouri Taleghani B, Keller P, Mueller BU, Baerlocher GM, Leibundgut
27 K, Pabst T (2015) Role of plerixafor in autologous stem cell mobilization with vinorelbine
28 chemotherapy and granulocyte-colony stimulating factor in patients with myeloma: a phase II
29 study (PAV-trial). *Leuk Lymphoma* **56**: 608-614.
30
31

32
33 Sonneveld P, Goldschmidt H, Rosinol L, Bladé J, Lahuerta JJ, Cavo M, Tacchetti P, Zamagni
34 E, Attal M, Lokhorst HM, Desai A, Cakana A, Liu K, van de Velde H, Eseltine D, Moreau P
35 (2013) Bortezomib-based versus nonbortezomib-based induction treatment before
36 autologous stem-cell transplantation in patients with previously untreated multiple myeloma:
37 a meta-analysis of phase III randomized, controlled trials. *J Clin Oncol* **31**: 3279 - 3288.
38
39

40
41 Stubblefield MD, Burstein HJ, Burton AW, Custodio CM, Deng GE, Ho M, Junck L, Stephen
42 Morris G, Paice JA, Tummala S, Von Roenn JH (2009) NCCN Task force report:
43 management of neuropathy in cancer. *J Natl Compr Canc Netw* **7**: 1 – 26.
44
45

46
47 Suyani E, Sucak GT, Aki SZ, Yegin ZA, Özkurt ZN, Yagci M (2011) Gemcitabine and
48 vinorelbine combination is effective in both as a salvage and mobilization regimen in
49 relapsed or refractory Hodgkin lymphoma prior to ASCT. *Ann Hematol* **90**: 658 – 691.
50
51

52
53 Swain SM, Arezzo JC (2008) Neuropathy associated with microtubule inhibitors: diagnosis,
54 incidence, and management. *Clin Adv Hematol Oncol* **6**: 455 - 467.
55

56
57 Tacchetti P, Terragna C, Galli M, Zamagni E, Petrucci MT, Pezzi A, Montefusco V, Martello
58 M, Tosi P, Baldini L, Pecatori J, Ruggieri M, Pantani L, Lazzaro A, Elice F, Rocchi S,
59
60

1
2
3 Gozzetti A, Palumbo A, Cavaletti G, Cavo M (2014) Bortezomib- and thalidomide-induced
4 peripheral neuropathy in multiple myeloma: clinical and molecular analyses of a phase 3
5 study. *American J Hemat* **89**: 1085-1091.
6
7
8
9
10
11
12
13
14
15
16
17
18
19
20
21
22
23
24
25
26
27
28
29
30
31
32
33
34
35
36
37
38
39
40
41
42
43
44
45
46
47
48
49
50
51
52
53
54
55
56
57
58
59
60

For Peer Review Only

1
2
3
4
5
6
7
8
9
10
11
12
13
14
15
16
17
18
19
20
21
22
23
24
25
26
27
28
29
30
31
32
33
34
35
36
37
38
39
40
41
42
43
44
45
46
47
48
49
50
51
52
53
54
55
56
57
58
59
60

TITLES AND LEGENDS TO FIGURES

Figure 1: A) Kaplan-Meier curves are depicted for the relapse-free survival (RFS) and **B)** for the overall survival (OS) of the entire study cohort.

For Peer Review Only

Table 2: Mobilization and transplantation.

gemcitabine chemotherapy + G-CSF, n (%)	24 (100)
one day of apheresis	19 (79)
two days of apheresis	5 (21)
1st apheresis at day 8	16 (67)
1st apheresis at day 9	7 (29)
1st apheresis at day 10	1 (4)
median (mean)	8 (8.38 ± 0.57)
duration of apheresis, mean, minutes	269.71 ± 91.27
median, minutes (range)	285 (70 - 420)
mean blood volume processed, liters	26.2
median, liters (range)	25.3 (13.5 - 33.9)
leukocytes at apheresis ^a , mean (G/l)	33.80 ± 12.94
median (range)	34.4 (7.90 - 55.6)
peripheral CD34-Wert at apheresis ^a	
mean (x 10 ⁹ / ml PB)	56.3 ± 38.1
median, x 10 ⁶ / ml PB (range)	50.5 (4.4-122.4)
% CD34 leukocytes at apheresis ^a	
mean	0.19 ± 0.32
median (range)	0.14 (0.02 - 0.68)
total collected CD34+ x 10 ⁶ / kg b.w. ^d	
mean	10.09 ± 6.61
median (range)	9.51 (4.95 - 19.2)
patients with > 5 x 10 ⁶ / kg CD34+ cells after the 1 st day of apheresis	23 (96)
transfused CD34+ x 10 ⁶ / kg b.w. ^d	
mean	3.51 ± 0.97
median (range)	3.4 (2.0 - 5.4)
first day of ANC ^b > 0,5x10 ⁹ /L - n (%)	
day 11	14 (58)
day 12	9 (38)
day 13	1 (4)
mean	11.46 ± 0.58
median (range)	11 (11 - 13)
first day of Plts ^c > 20x10 ⁹ /L - n (%)	
days 10-12	5 (21)
day 13	8 (33)
days 14-15	9 (38)
>day 15	2 (8)
mean	13.63 ± 2.27
median (range)	13 (9 - 21)
first day of Plts ^c > 100x10 ⁹ /L - n (%)	
≤ day 20	13 (54)
days 20-30	8 (33)
>day 30	3 (12)
mean	22.04 ± 5.88
median (range)	20 (15 - 40)

^a at the first day of apheresis; ^b ANC: absolute neutrophil count; ^c Plts: platelets; in the absence for transfusions in the previous three days; ^d b.w.: body weight.