



POLITECNICO DI TORINO
Repository ISTITUZIONALE

Halocarbon emissions from hazardous waste landfills: Analysis of sources and risks

Original

Halocarbon emissions from hazardous waste landfills: Analysis of sources and risks / Ravina, M.; Facelli, A.; Zanetti, M..
- In: ATMOSPHERE. - ISSN 2073-4433. - 11:4(2020), p. 375.

Availability:

This version is available at: 11583/2836082 since: 2020-06-16T16:28:43Z

Publisher:

MDPI AG

Published

DOI:10.3390/ATMOS11040375

Terms of use:

openAccess

This article is made available under terms and conditions as specified in the corresponding bibliographic description in the repository

Publisher copyright

(Article begins on next page)

Article

Halocarbon Emissions from Hazardous Waste Landfills: Analysis of Sources and Risks

Marco Ravina * , Angelica Facelli and Mariachiara Zanetti

Department of Environment, Land and Infrastructure Engineering, Politecnico di Torino, Corso Duca degli Abruzzi, 24, 10129 Torino, Italy; angelica.facelli@studenti.polito.it (A.F.); mariachiara.zanetti@polito.it (M.Z.)

* Correspondence: marco.ravina@polito.it; Tel.: +39-110-907-632

Received: 26 February 2020; Accepted: 8 April 2020; Published: 11 April 2020



Abstract: Landfills are sources of fugitive volatile organic carbon (VOC) emissions, including halocarbons. The objective of this study was to evaluate the contribution of halogenated VOCs to the health risks associated with the exposure of workers operating in landfills, gathering information on the role of endogenous/exogenous sources present in anthropized areas. A hazardous waste landfill located in Turin, Italy was used as a case study. Ambient concentrations of 10 pollutants (BTEX, styrene, 1,3,5-trimethylbenzene, 1,2,4-trimethylbenzene, 1,2-dichloroethane, and 1,2-dichloropropane), measured in 10 points of the landfill area, were considered and analyzed. The data had a monthly frequency and covered two years. A cumulative health risk analysis was conducted by applying a Monte-Carlo method. The results showed that the contribution of 1,2-dichloroethane and 1,2-dichloropropane was 17.9% and 19.4% for the total risk and hazard index respectively. Benzene and ethylbenzene gave the highest contribution to the total risk (56.8% and 24.8%, respectively). In the second phase of the study, waste typologies that are possibly responsible for halocarbon emissions were investigated. Halocarbon concentration trends and waste disposal records were compared. Although further investigation is needed, some waste typologies were not excluded to contribute to halocarbon emissions, in particular sludge coming from wastewater treatment plants.

Keywords: halogenated VOCs; air quality; health risk analysis; emerging pollutants; hazardous waste

1. Introduction

Halocarbons are substances emitted by anthropogenic sources, which are commonly employed as solvents cleaners, refrigerants, and reagents in the plastic and metal industry. Long-term exposure to halocarbons has been associated with some potential health risks, in particular to some respiratory problems, such as irritation and cancer [1]. Halocarbons, in particular chlorofluorocarbons (CFCs) and chlorinated solvents, are significant sources of greenhouse gases (GHGs) and contribute to ozone layer depletion [2,3]. Landfills may be a source of fugitive volatile compound emissions, including halocarbons [4,5]. In landfill sites, wastes are usually piled up and compacted on the working face, being exposed to the atmospheric environment for days to weeks before being definitively covered. The presence of textiles, cleaning agents, and plastics in disposed wastes leads to the emission of these compounds into the atmosphere [6]. Usually, the gaseous emissions in landfills are collected, but the risk persists in fugitive emissions.

Several studies were done on the fugitive emissions of municipal solid waste landfills, analyzing emissions, odors, and risks. The atmospheric emissions of landfills consist of methane, carbon dioxide, water vapor, and non-methane volatile organic compounds (NMVOCs or VOCs). Considering the VOC composition, the higher percentage is of sulphur compounds, nitrogen compounds, oxygenated compounds, aromatics, halogenated compounds, and terpenes [7]. The variations that exist in the

trace component composition from distinct areas of a given landfill site and between landfill sites can be readily assigned to differences in the composition of wastes, the age of the wastes, the reached stage in the decomposition processes, and in some cases, the method of site operation [8]. In terms of local air quality, the presence of large quantities of potentially hazardous mixtures of chemicals in landfill sites close to residential populations has increasingly caused concern [9]. For this reason, a substantial number of studies on the health effects associated with landfill sites were conducted in the last years. Health risk analysis (HRA) is the consolidated methodology to evaluate citizens' and workers' exposure to pollutant emissions. HRA is a management tool. It involves assessing the likelihood and consequences of undesirable events to inform decisions about the significance of risks to human health. It helps to identify how best to manage unacceptable risks and requires an understanding of the sources of a hazard, potential receptors, and the pathways by which hazards might affect receptors [10].

In previous research studies, HRA methods were applied to landfill sites. The majority of existing studies considered the evaluation of risk exposure to a number of VOCs, in particular the benzene-toluene-ethylbenzene-xylene group (BTEX). Halocarbons were also considered, but these studies do not always include a wide range of these substances. Besides, most of the studies were conducted on municipal solid waste (MSW) landfills, while analyses conducted on hazardous waste landfills are scarce [7]. Of the existing studies, Liu et al. [4] conducted an HRA of the exposure of the population to BTEX in an MSW landfill in China. The results showed that the working face of a landfill could be a significant source of aromatics, which might pose a carcinogenic risk to residents nearby, especially for those receiving mixed MSW. Palmiotto et al. [11] presented an integrated HRA of a MSW landfill located in central Italy. The results indicated that the potential incremental cancer risk for residents living in the vicinity of the facility was negligible, and other health effects are not likely to occur. This study also indicated a negligible risk for exposure to vinyl chloride monomer (VCM). A study of the Bristol Environmental Agency, UK, reported the HRA of population exposure to the fugitive emissions of two MSW landfills, considering over 60 substances and substance groups [10]. In total, 23 substances were found to require more detailed investigation because the measured boundary fence average concentrations were above the project-specific health criteria values. No halocarbons were included in this group of substances. The list of substances posing an insignificant contribution to risk reported eight halocarbons, including 1,1-dichloroethane. Another study in Novi Sad (Serbia) was conducted on an MSW landfill [12]. The only halocarbon considered was hexachlorocyclohexane (HCH). The calculated risk values for all investigated substances were not significant. Similar results were also reported in a study on occupational exposure on an MSW landfill near Shanghai [13]. This trend was also confirmed in a study conducted on a large MSW landfill in Beijing, China [5]. In this study, the health risk of VOC inhalation was calculated. Aromatics and halogenated compounds (chloroform and tetrachloroethylene) contributed the most to carcinogenic risk, while sulphur compounds contributed the most to the cumulative toxicity index. Considering hazardous waste landfills, a review of Vrijheid [9] reported that, although evidence for a causal relationship between landfill exposures and cancers is still weak, increases in the risk of adverse health effects have been reported near individual landfill sites and in some multisite studies.

Even if they do not constitute the main pollutants in terms of emission flow, the presence of halocarbons in landfills represents a hazard to human health, given their high toxicity and carcinogenicity. This is especially valid when landfills are located next to urban or industrial areas, where additional pollution sources (e.g., traffic or industrial activities) may be present. In fugitive emissions from landfills, the pollutant levels are not high, with it being expected that their effect on human health is limited to the landfill's area. Thus, HRA must first be addressed to the workers operating on site.

The present study was focused on the analysis of fugitive halocarbon emissions from hazardous waste landfills. The objective was to evaluate the contribution of halogenated VOCs to the cumulative health risks associated with the exposure of workers operating in the landfill sites. The contribution of

halocarbons to the total risk was compared to those of other VOCs, gathering information on the possible role of endogenous/exogenous sources present in densely anthropized areas. A secondary objective of the study was the analysis of the possible waste typologies responsible for halocarbon emissions by landfill sites, collecting information on the sources and possible mitigation pathways. The Barricalla site, a hazardous waste landfill located in Turin, Italy, was used as a case study. 1,2-dichloroethane and 1,2-dichloropropane were selected as marker substances of halocarbons' presence. These substances are commonly monitored in hazardous waste landfills, because of their high carcinogenic and toxic potential. In the last years, the presence of these substances in other working environments was also investigated. For example, Çankaya et al. [14] analyzed VOC levels at small enterprises in Kocaeli, Turkey (restaurants, dry cleaners, photocopy centers, and auto paint shops). According to the HRA, high cancer risk and hazard quotients were mostly dependent on the abundance of benzenes and chlorinated VOCs. Among halocarbons, 1,2-dichloroethane, 1,2-dichloropropane and carbon tetrachloride showed the highest contribution to risk. Another study conducted in Buenos Aires, Argentina showed opposite results [15]. In this study, five different working environments were considered, and the concentration of 1,2-dichloroethane was always below the measurement detection limit.

The present study also considered the characterization of the uncertainty related to the HRA methodology. In the case of a landfill, it is difficult to locate a single source of contaminants at a specific depth because the contamination is generally diffuse [16]. To evaluate the VOC concentrations in landfills, traditional approaches include measurement of the landfill gas concentration [17] and air quality monitoring of the site [18–20]. To be representative, HRA must be supported by data with a detailed spatial and temporal resolution. The implementation of an analysis of the probability distribution of the incoming data can support the characterization of the uncertainty associated with the method. For this reason, in this study, the HRA was calculated by means of a novel approach, based on the probabilistic analysis of ambient air pollutant concentrations. The potential waste typologies emitting halocarbons were finally evaluated through an analysis of the waste disposal records made available by the landfill operator. The methodology, results, and discussion are reported in the following sections.

2. Methodology

The risk contribution of halocarbon emissions from hazardous waste landfills was evaluated through the application of a health risk analysis (HRA) approach, considering the exposure of possible workers operating on the site. The considered case study was the Barricalla landfill, located close to the town of Turin, northern Italy. As demonstrated by previous research activity on HRA, particular care must be addressed to the definition of the representative pollutant concentration levels, especially when exposure to multiple chemical substances is evaluated [21]. Considering only the average or maximum of the observed concentrations might not be, in some cases, representative of the effective long-term exposure of workers. This is especially valid if fugitive emissions from landfills are considered, where emissions depend on variable factors and sources. If an adequate number of observations is available, the analysis of the probability distribution of measured concentrations and the application of Monte-Carlo methods could provide support in this sense. For this reason, in our study, the calculations of HRA were preceded by an analysis of the concentrations of the chemical species that were measured on site. Data of the ambient concentration of pollutants recorded in 7 sampling points of the study site in the period 2016–2017 were elaborated to find the best fitting probability distribution. One distribution curve per pollutant species was defined. These curves were then used to generate large vectors of the estimated concentration values. Cumulative HRA was then calculated repeatedly using vectors of the estimated concentration values as an input, as described in the following sections. The scheme of the operating model used in this study is reported in Figure 1.

In a subsequent phase of the study, an analysis was conducted, with the objective of defining the waste typologies that are possibly responsible for halocarbon emissions. This analysis was based on the cross-comparison of halocarbon concentration trends and waste disposal records.

The studied site and the methodological approach are presented in the following.

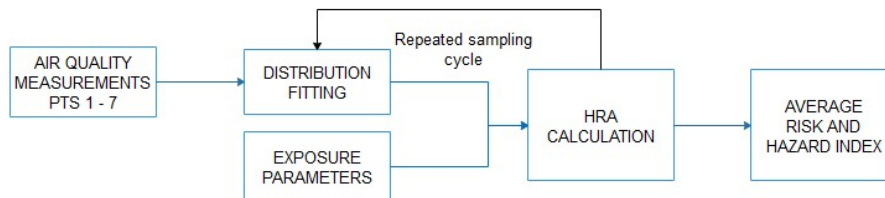


Figure 1. Scheme of the operational model for health risk analysis.

2.1. Case Study

The studied area is situated northwest of Turin, close to an industrial area and the town ring road (Figures 2 and 3). The Barricalla landfill has a comprehensive area of 150,000 m² divided into 5 lots. The area previously housed a gravel pit of about 600,000 m³, used mainly for the extraction of raw materials for the construction of the Turin ring road. The Barricalla landfill was inaugurated in 1988; lots 1 and 2 have been exhausted and closed. Lot 4 and lot 3 were declared terminated in April 2017 and July 2018, respectively. Recently, the new lot 5 was built, which can accommodate 508,850 m³ of wastes.

The site is Eco-Management and Audit Scheme (EMAS) certified and subjected to the Integrated Pollution Prevention and Control (IPPC) authorization. Generally, the wastes conferred in this landfill are industrial sludge, railway ballasts, wastes from the treatment of flue gas of steel mills, ashes from incineration, land reclamation, and wastes from treatment plants. Two different kinds of analyses are performed on waste before its disposal: an analysis on the eluate and another on the solid waste. The first is done to analyze the potential release of substances in the liquid phase (inorganic compounds and chemical oxygen demand, COD). The second kind of analysis evaluates the residue at 105 °C and the total organic carbon (TOC).

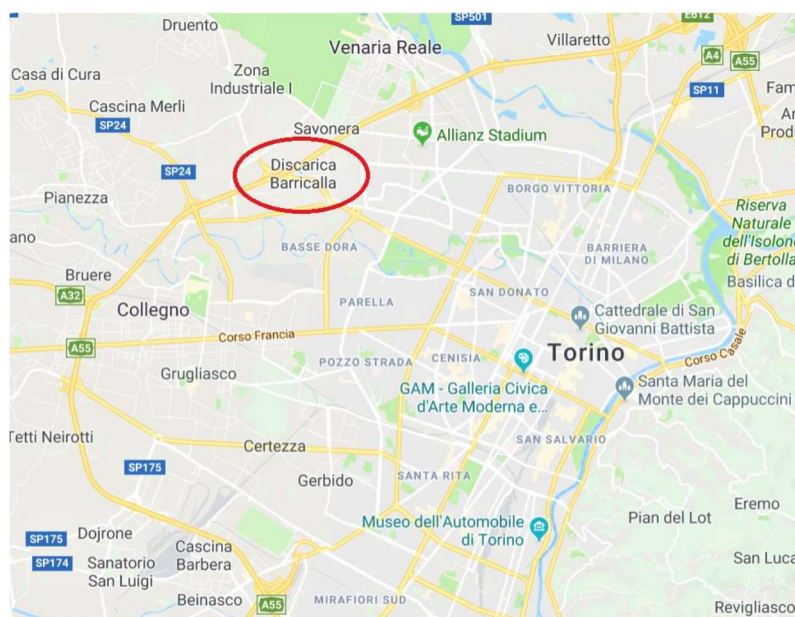


Figure 2. Location of the Barricalla landfill.



Figure 3. Photo of the Barricalla landfill.

The environmental authorization sets the specifications of the monitoring of the pollutants emitted by the landfill surface (compounds to be measured and frequency of measurements) [22]. Concerning the emissions into the atmosphere, measures on ambient air and landfill gas are done regularly. Ambient air monitoring is measured with a monthly frequency on 11 points (Figure 4) and includes the following compounds: 1,2-dichloroethane, benzene, 1,2-dichloropropane, toluene, ethylbenzene, meta- and para- xylene, styrene, ortho-xylene, 1,2,4-trimethylbenzene, and 1,3,5-trimethylbenzene. The ambient air concentration in lot 3 is measured with a monthly frequency on sampling points 1, 2, and 3 (Figure 4). These points are located at a position of 120° with respect to the center of lot 3. The same method is used in lot 4 (points 7, 8, and 9 of Figure 4). Every 6 months, additional measurements are done in the central position of lot 3 (points 4 and 5) and lot 4 (points 10 and 11). The background concentration is measured every 6 months, at a distance of around 100 m to the limit of the landfill site, in the direction of the nearest receptor (an isolated residential unit). Landfill gas is collected by means of a system of vertical slotted tubes, surrounded by gravel to allow the drainage of gases. Waste typologies conferred in this landfill have very low biodegradability, thus landfill gas production is very limited. The gas is directly vented into the atmosphere. The concentration of pollutants in the vent gas is measured every 6 months. The same chemical species as of ambient air are monitored. The position of the vent pipes in lot 3 is reported in Figure 5. The collection of samples and analysis are done by an external laboratory. The concentration of pollutants in both ambient air and landfill gas are determined according to the EPA TO15/99 method [23]. The meteorology of this area is characterized by low winds, in particular during summer and winter. The average wind distribution in 2015, which is representative of the average conditions, is reported in Figure 6. In this area, during the cold season, pollutant dispersion is mainly regulated by local breeze regimens and soil heat-induced turbulence, which is minimum from December to February. Precipitations are minimum in January.

This study considered all the pollutants monitored on the site, with a particular focus on 1,2-dichloroethane and 1,2-dichloropropane. 1,2-dichloroethane (CAS 107-06-2) is classified by the USA Environmental Protection Agency as a probable human carcinogen (group B2) [24]. This substance is used principally in the synthesis of vinyl chloride monomer and other chlorinated solvents. It also used as a cleaning agent, and can be contained in personal hygiene and household products [25]. 1,2-dichloropropane (CAS 78-87-5) is classified by the EPA as a human carcinogen (group A) [24] and it is used as an industrial solvent in paint stripper and varnishes [26]. The physico-chemical characteristics of these substances are reported in Table 1. A Henry's constant value higher than 10^{-3} atm·m³/mol identifies compounds that easily volatilize from the liquid phase. Values of the relative volatility from soil higher than 1 identify a substance that easily volatilizes from a solid surface [27]. Based on their characteristics, it is expected that 1,2-dichloroethane and 1,2-dichloropropane volatilize rapidly and spontaneously from wastes.

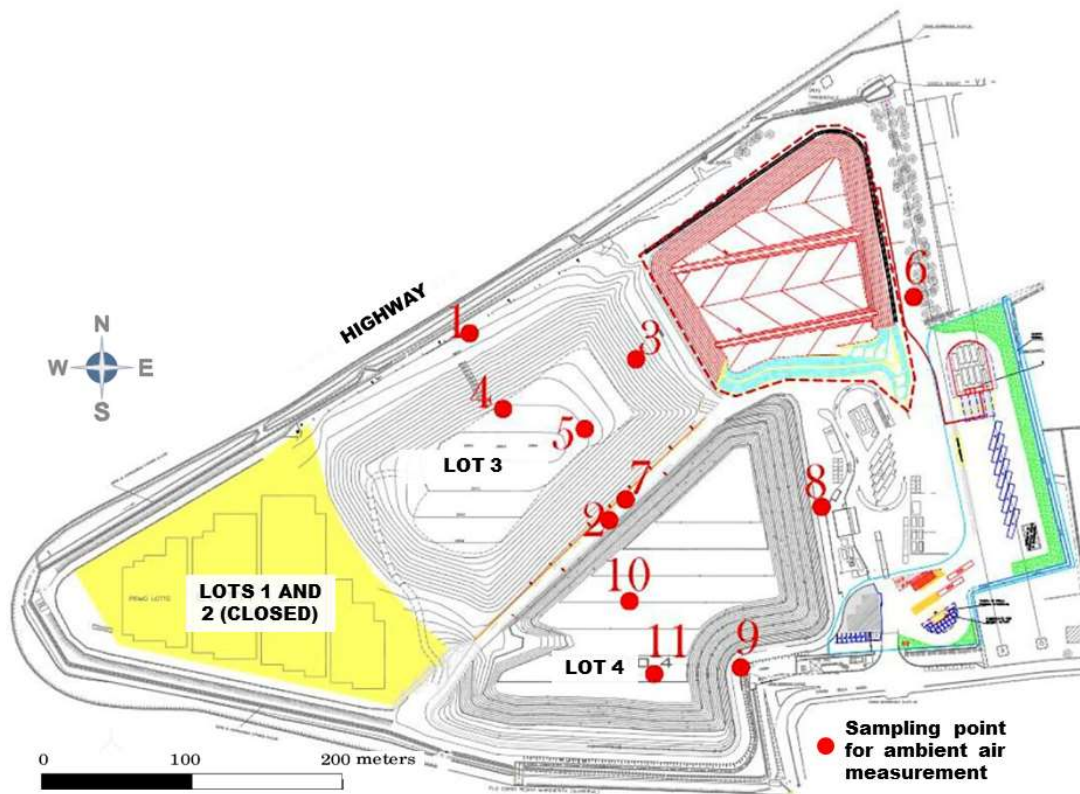


Figure 4. Location of sampling points for ambient air monitoring.

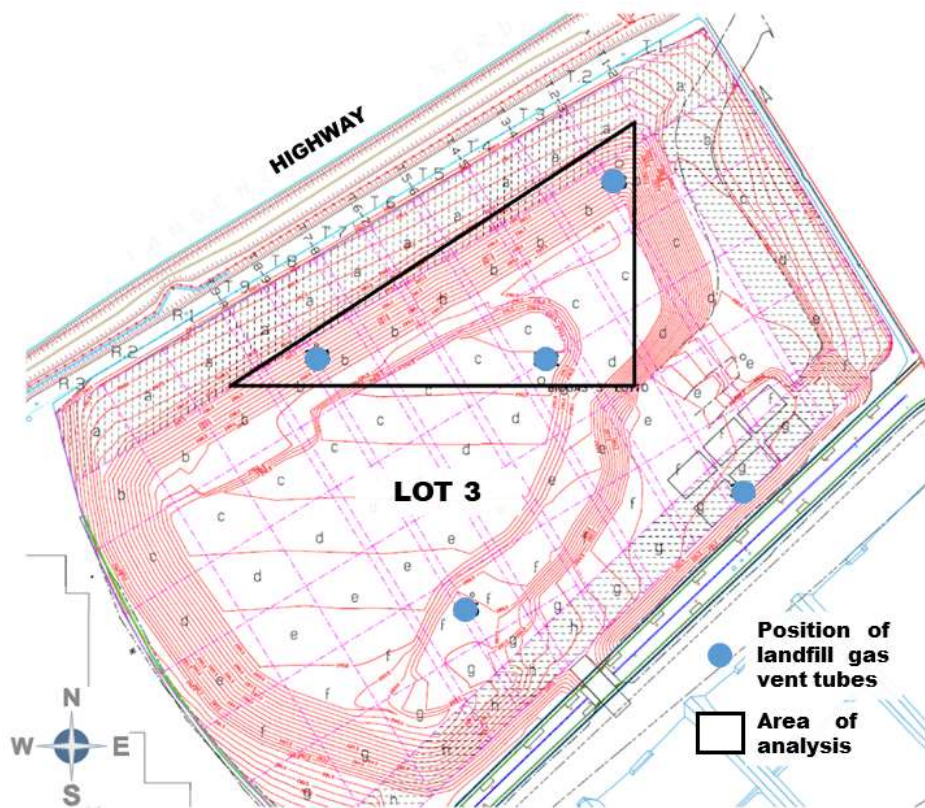


Figure 5. Location of sampling points for ambient air monitoring.

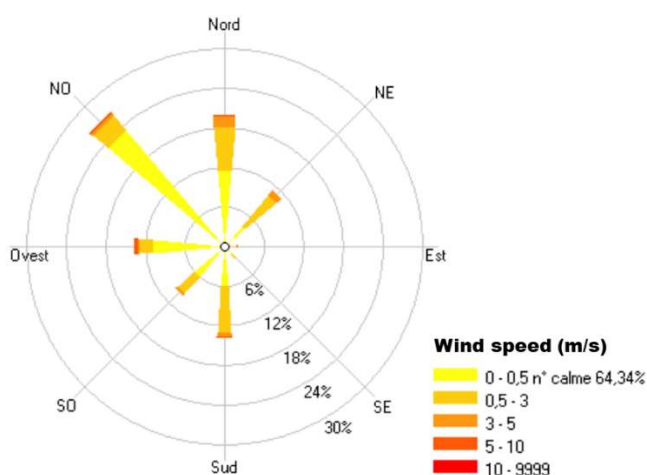


Figure 6. Average wind distribution on the study site in 2015.

Table 1. Physico-chemical characteristics of 1,2-dichloroethane and 1,2-dichloropropane.

Substance	Formula	Molecular Weight (g/mol)	Vapor Pressure (mmHg)	Solubility (mg/L)	Saturation Mass Concentration (g/m ³)	Henry's Constant (atm·m ³ /mol)	Relative Volatility from Soil
1,2-Dichloroethane	C ₂ H ₄ Cl ₂	98.96	61	8690	350	1.1 × 10 ⁻³	7.61
1,2-Dichloropropane	C ₃ H ₆ Cl ₂	112.99	41.2	2600	25.49	2.8 × 10 ⁻³	4.70

2.2. Calculation Approach

To define the most representative values of the pollutant concentration to which landfill workers are exposed, the data collected from the ambient air monitoring systems were analyzed to define their probability distribution. Monthly concentration values recorded in the years 2016 and 2017 in lot 3 (i.e., the period of full operation of this lot) were collected. Data of sampling points 1–5, 7, and 10 were considered (Figure 4), for a total of 168 observations for each monitored species. To be conservative, a concentration value equal to half of the detection limit was assigned to the observations where the value was below the detection limit. These data were analyzed with the use of the Distribution Fitter tool of the Matlab software [28]. This tool interactively fits probability distributions to imported data, choosing from 22 built-in probability distributions, or creates a customized distribution. The app displays the fitted distribution over plots of the empirical distributions and the estimated parameters. To evaluate the best fit, the principle of maximum log-likelihood estimates was adopted. One distribution was obtained for each pollutant. These data were used to calculate risk and hazard index (HI) by applying a Monte-Carlo method. A Matlab script was generated to calculate the single and cumulative risk and hazard index based on the equations reported in Section 2.3.

2.3. Health Risk Analysis

Health risk analysis (HRA) had the objective of evaluating the exposure to hazardous emissions of possible workers operating on the site. HRA considered all 10 substances measured onsite. The cumulative risk and HI for outdoor air inhalation was calculated, then compared to the benchmark reference values. Risk is defined as the probability that a receptor will develop cancer. The hazard index is related to non-carcinogenic effects and is defined as the ratio of the potential exposure to a substance and the level at which no adverse effects are expected. The contribution of halocarbons emissions to the cumulative risk and cumulative HI was then evaluated. The determination of the risk was done independently for each contaminant, thus possible synergic effects (positive and negative) deriving from the coexistence of different compounds were not taken into account. Risk and HI were calculated as:

$$R = FT \cdot CRS \cdot EM \cdot SF, \quad (1)$$

$$HI = \frac{FT \cdot CRS \cdot EM}{RfD}, \tag{2}$$

where *FT* [unitless] is the transport factor characteristics for each environmental pathway, *CRS* is the representative input concentration [$\mu\text{g}/\text{m}^3$], *EM* is the effective flow rate of exposure [$\text{m}^3 \cdot \text{kg}^{-1} \cdot \text{day}^{-1}$], *SF* is the slope factor [$\text{kg} \cdot \text{day} \cdot \text{mg}^{-1}$], and *RfD* is the reference dose [$\text{mg} \cdot \text{kg}^{-1} \cdot \text{day}^{-1}$]. *FT* is assumed to be equal to unity, as it is supposed that workers operate close to the emitting area. *EM* is connected to the time of exposure and the characteristics of the receptor; in this case, it was calculated as:

$$EM = \frac{B_0 \cdot EF_d \cdot EF \cdot ED}{BW \cdot AT \cdot 365 \frac{\text{day}}{\text{year}}}. \tag{3}$$

The description and default values of the parameters of Equation (3) are reported in Table 2.

Table 2. Parameters of Equation (3).

Symbol	Parameter	Value	Unit
B_0	Inhalation rate outdoor	2.5	m^3/h
EF_d	Daily frequency of exposure	7	hours/day
EF	Frequency of exposure	250	day/year
ED	Duration of exposure	25	years
BW	Body weight	70	kg
AT_{hq}	Average time of exposure (toxic risk)	70	years
AT_c	Average time of exposure (carcinogenic risk)	70	years

The toxicological parameters of single substances, i.e., *SF* and *RfD*, were calculated from the unit cancer risk (*UCR*) and reference concentration (*RfC*) parameters, according to Equations (4) and (5). The reference values for these parameters were taken by the report issued by the Italian National Institute of Insurance on Occupational Accidents (INAIL) [29] and are reported in Table 3, with the respective International Agency for Research on Cancer (IARC) classification of carcinogenicity:

$$SF = UCR \cdot \left(\frac{70\text{kg}}{\frac{20\text{m}^3}{\text{day}}} \right) \cdot 1000 \frac{\mu\text{g}}{\text{mg}}, \tag{4}$$

$$RfD = RfC \cdot \left(\frac{20\text{m}^3}{70\text{kg}} \right). \tag{5}$$

Table 3. Toxicological parameters.

VOC	IARC	UCR ($\mu\text{g}/\text{m}^3$) ⁻¹	RfC (mg/m^3)
1,2-dichloroethane	2B	2.60×10^{-5}	7.0×10^{-3}
Benzene	1	7.80×10^{-6}	3.0×10^{-2}
1,2-dichloropropane	1	3.70×10^{-6}	4.0×10^{-3}
Toluene	3		5
Ethylbenzene	2B	2.50×10^{-6}	1
Meta Xylene and Para Xylene	3		1.0×10^{-1}
Styrene	2B	5.00×10^{-7}	1
Ortho Xylene	3		1.0×10^{-1}
1,3,5-trimethylbenzene	3		2.0×10^{-1}
1,2,4-trimethylbenzene	3		2.0×10^{-1}

NOTE: IARC = International Agency for Research on Cancer; UCR = Unit Cancer Risk; RfC = reference concentration.

For each pollutant, considering the specific type and estimated parameters of the probability distribution obtained, a large vector ($n = 10^5$) of the estimated concentrations was generated. The Matlab

script described in Section 2.2 was run repeatedly. In every run, a random value was extracted by the vectors of the estimated concentrations and used as an input for the risk and HI calculation. The following output values were obtained: 1 vector of cumulative risk values, 1 vector of cumulative HI values, 10 vectors (one per pollutant) of single risk values, and 10 vectors (one per pollutant) of single HI values.

2.4. Analysis of the Possible Sources of Halocarbons

The secondary objective of this study consisted of the identification of the possible sources of halocarbon emissions in the studied area. With this purpose, a preliminary screening analysis based on the comparative evaluation of concentration measurements and waste disposal records was conducted on the study site. This phase followed two different levels of analysis, corresponding to (i) identification of the possible endogenous/exogenous contribution to halocarbon emissions in the area of the landfill site, and (ii) analysis of the waste disposal reports of the landfill site, to identify possible waste typologies responsible for the halocarbon emissions.

The first phase consisted of the screening of all possible emission sources of VOC present in the area. The study site is located not far from the urban settlement of Turin. Different possible emission sources may thus contribute to VOC emissions in this area, but the highway ring traffic is the most evident source nearby. The research was, therefore, focused on characterizing the emission footprint of traffic sources. A total of 12 publications reporting the composition of VOC emissions from traffic sources were found in the bibliography. As shown in Table 4, traffic emissions are mainly composed of alkanes, alkenes, and polycyclic aromatic hydrocarbons (PAHs). Only in one case, the presence of halocarbons (namely perchloroethylene) was detected. Conversely, research showed that landfills are well-known sources of halocarbons [30,31].

As the preliminary screening tended to exclude the contribution of exogenous emission sources to the presence of halocarbons in the Barricalla site, an analysis of waste disposal records was performed to identify possible waste typologies responsible for halocarbon emissions. With this purpose, data of the air quality monitoring of the site were compared to the documents reporting waste disposal. Given the high number of waste disposal records available, the analysis had to be restricted to a specific area and a specific period. The analysis was thus focused on the portion of lot 3 reported in Figure 5, considering all records between June and December 2017. This period and area of study were selected considering the variation of the 1,2-dichloropropane concentration recorded in landfill gas (Table 5). This variation of the concentration may be due to (i) the faster volatilization of halocarbons in summer than winter due to the higher temperature, so that these substances, if present, are emitted before the wastes reach the landfill; and (ii) the different composition of the conferred wastes. Nevertheless, the collection network of landfill gas does not have a horizontal direction, so landfill sub-portions are isolated, and gas is not transferred between sub-portions. Provided this, it was assumed that in this area and period, hazardous wastes possibly emitting halocarbons were conferred. The database of all the materials conferred in this portion of the landfill between June and December of 2017 was thus analyzed.

Table 4. Review of existing studies characterizing VOC emissions from traffic sources.

Reference	Location	Alkanes	Alkenes	Alkynes	PAHs	Aldehydes	Ketones	Esters	Ethers	Nitro-Alkanes	Halocarbons	Note on Measurement
[32]	Mexico City (Mexico)	X	X	X	X	X	n.d.	n.d.	X	n.d.	X	1, 2
[33]	Bogotá (Colombia)	X	X	n.d.	X	n.d.	n.d.	n.d.	n.d.	n.d.	n.d.	1, 3
[34]	Beilin (China)	X	X	n.d.	X	n.d.	n.d.	n.d.	n.d.	n.d.	n.d.	1, 4, 5
[35]	Palermo (Italy)	X	X	n.d.	X	n.d.	n.d.	n.d.	n.d.	X	n.d.	1, 4
[36]	China	X	X	X	X	X	X	X	n.d.	n.d.	n.d.	1, 6.
[37]	Zurich (Switzerland)	X	X	n.d.	X	n.d.	n.d.	n.d.	n.d.	n.d.	n.d.	1, 7
[38]	Brussels (Belgium)	X	X	n.d.	X	n.d.	n.d.	n.d.	n.d.	n.d.	n.d.	1, 2
[39]	Taiwan	X	X	n.d.	X	n.d.	X	X	n.d.	n.d.	n.d.	1, 8
[40]	Hong Kong	X	X	X	X	X	n.d.	n.d.	n.d.	n.d.	n.d.	1, 4, 9
[41]	Tokyo (Japan)	X	X	n.d.	X	X	n.d.	n.d.	n.d.	n.d.	n.d.	1, 10

NOTES ON MEASUREMENTS: 1 n.d. means not detected among most abundant species; 2 inside a tunnel; 3 close to residential, industrial and commercial areas; 4 intense traffic; 5 different traffic typologies; 6 different locations and type of vehicles; 7 close to a tunnel; 8 at the entrance, inside and exit of a tunnel; 9 annual coverage; 10 two-years coverage.

Table 5. Halocarbon concentrations in landfill gas in lot 3 in June and December 2017. IDs refer to different sampling points (Figure 5). Values in mg/m³.

Date	Substance	ID 3.1	ID 3.2	ID 3.3	ID 3.4	ID 3.5
Jun. 2017	1,2-Dichloroethane	<0.06	<0.06	0.31	<0.06	<0.06
	1,2-Dichloropropane	<0.06	<0.06	<0.06	<0.06	<0.06
Dec. 20117	1,2-Dichloroethane	<0.06	<0.06	0.24	<0.06	<0.06
	1,2-Dichloropropane	<0.06	9.75	8.19	10.11	4.31

3. Results

3.1. Analysis of Input Data

Ambient air concentrations were analyzed with the method described in Section 2.2. It was found, for every substance, that a log-normal distribution provided the best fit on the data. For each substance, the statistical parameters (μ and σ) corresponding to the best fit, i.e., maximum log-likelihood, were also calculated. The sampling mean, standard deviation, 95th percentile, and μ and σ parameters of the corresponding log-normal distribution are reported in Table 6.

Table 6. Probability distribution parameters of the measured concentrations.

Compound	Mean ($\mu\text{g}/\text{m}^3$)	Standard Deviation ($\mu\text{g}/\text{m}^3$)	95th Percentile ($\mu\text{g}/\text{m}^3$)	Detection Limit ($\mu\text{g}/\text{m}^3$)	μ	σ
1,2-dichloroethane	0.1819	0.2896	0.4000	0.2	-1.9841	0.5863
Benzene	2.5653	1.6567	6.1000	0.2	0.7249	0.6938
1,2-dichloropropane	0.2847	0.5268	0.6000	0.2	-1.6635	0.7406
Toluene	3.5715	2.3640	8.2300	0.2	1.0641	0.6931
Ethylbenzene	2.9958	1.8443	6.5900	0.2	0.9178	0.6350
Meta Xylene and Para Xylene	4.5118	2.6380	9.7400	0.2	1.3455	0.5982
Styrene	0.3131	0.6955	0.6000	0.2	-1.5026	0.6563
Ortho Xylene	2.1012	1.2596	4.6400	0.2	0.5733	0.5936
1,3,5-trimethylbenzene	1.1500	0.5608	2.1000	0.2	0.0189	0.5128
1,2,4-trimethylbenzene	0.9458	0.6456	1.8100	0.2	-0.2193	0.5977

3.2. Health Risk Analysis

The results of the HRA are reported in Table 7. To estimate the effect deriving from the coexistence of more than one substance, the cumulative risk and hazardous index were calculated through the sum of the individual parameters. The commonly assumed benchmark values below which risk is considered negligible are 10^{-6} for single substances and 10^{-5} for cumulative risk. For the hazard index, a limit of 1 is considered both for single substances and mixtures [29]. The results show that the average cumulative risk does not exceed the benchmark value, indicating that the risk for workers is most probably negligible (average $R = 7.16 \times 10^{-6}$ standard deviation = 3.70×10^{-6}). The complete probability distribution of the cumulative risk obtained from the 10^5 runs based on the Monte-Carlo approach is reported in Figure 7. As expected, the distribution of the cumulative risk values is log-normal ($\mu = -11.96 \pm 0.0014$; $\sigma = 0.446 \pm 0.0009$). This additional result shows that the benchmark value of 10^{-5} was exceeded by 16% of the simulations. Considering the relative contribution of single substances to the cumulative risk, Table 7 shows that benzene and ethylbenzene give the highest contribution to the total risk (56.8% and 24.8%, respectively). The contribution of halocarbons is 14.6% for 1,2-dichloroethane and 3.3% for 1,2-dichloropropane. Of the single substances, only benzene and ethylbenzene exceed the value of 10^{-6} .

The average cumulative HI is 0.0965 (standard deviation = 0.0315), meaning that the benchmark value is not exceeded. The complete probability distribution of the cumulative HI obtained from

the simulations is reported in Figure 8. Additionally, the cumulative HI values are aligned on a log-normal distribution ($\mu = -2.386 \pm 0.0009$; $\sigma = 0.306 \pm 0.0006$). For HI, the benchmark value of 1 is never exceeded, meaning a negligible probability of intoxication for workers. Considering the relative contribution of single substances to the cumulative HI, Table 7 shows that meta- and para-xylene and benzene give the highest contribution to the total HI (34.3% and 19.2%, respectively). The contribution of halocarbons is 5.5% for 1,2-dichloroethane and 13.9% for 1,2-dichloropropane. The threshold value of 1 is not exceeded for any of the substances.

On the basis of the results reported herein, an additional evaluation is reported in the following.

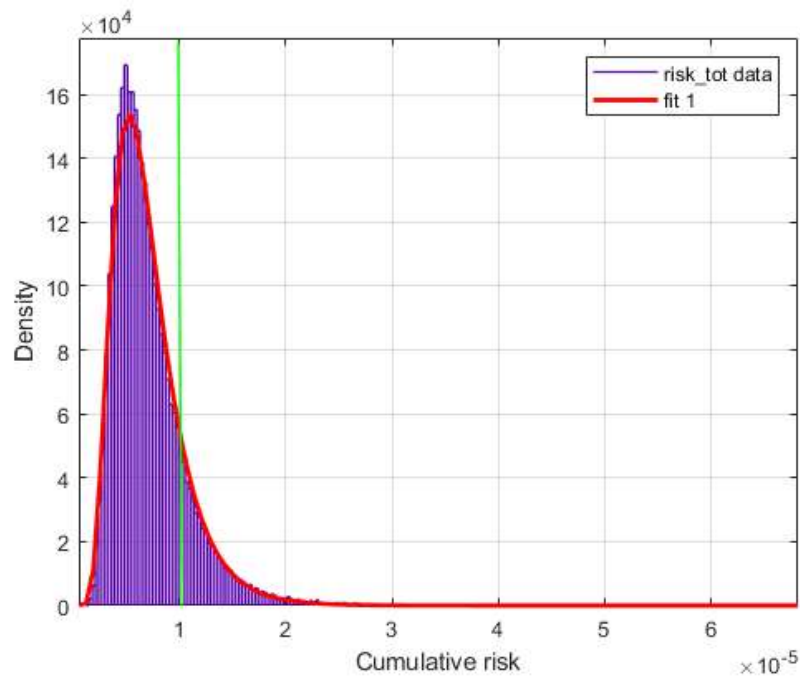


Figure 7. Probability distribution of the cumulative risk resulting from the Monte-Carlo simulations. The green line represents the benchmark value of 10^{-5} .

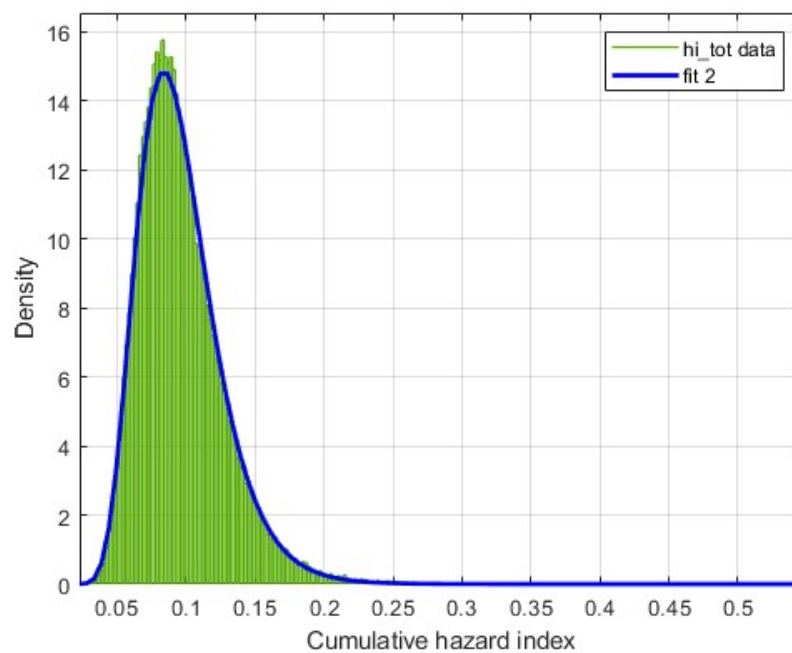


Figure 8. Probability distribution of the cumulative hazard index resulting from the Monte-Carlo simulations.

Table 7. Results of the health risk analysis.

Compound	Exposure E = CRS·EM	SF	RfD	Risk R (Average)	Relative Contribution to Cumulative R (%)	Hazard Index HI (Average)	Relative Contribution to Cumulative HI (%)
1,2-dichloroethane	1.02×10^{-5}	9.10×10^{-2}	2.00×10^{-3}	9.07×10^{-7}	14.6	0.0050	5.5
Benzene	1.54×10^{-4}	2.73×10^{-2}	8.57×10^{-3}	4.40×10^{-6}	56.8	0.0188	19.2
1,2-dichloropropane	1.55×10^{-5}	1.30×10^{-2}	1.14×10^{-3}	1.97×10^{-7}	3.3	0.0133	13.9
Toluene	2.08×10^{-4}		1.43	0	-	0.0006	0.6
Ethylbenzene	1.77×10^{-4}	8.75×10^{-3}	2.86×10^{-1}	1.63×10^{-6}	24.8	0.0007	0.7
Meta- and Para-Xylene	2.66×10^{-4}		2.86×10^{-2}	0	-	0.0344	34.3
Styrene	1.89×10^{-5}	1.75×10^{-3}	2.86×10^{-1}	3.00×10^{-8}	0.5	0.0001	0.1
Ortho Xylene	1.25×10^{-4}		2.86×10^{-2}	0	-	0.0158	16.8
1,3,5-trimethylbenzene	6.95×10^{-5}		5.71×10^{-2}	0	-	0.0044	4.9
1,2,4-trimethylbenzene	5.56×10^{-5}		5.71×10^{-2}	0	-	0.0036	4.0
Cumulative				7.1×10^{-6}		0.0965	

3.3. Waste Typologies Emitting Halocarbons

The analysis of the waste disposal records reported that four main waste typologies were disposed in lot 3 between June and December 2017. These were identified with the following European Waste Catalogue (EWC) codes: 10.04.01* (slags, first and second smelting), 17.05.07* (track ballast containing hazardous substances), 17.06.05* (building material containing asbestos), and 19.03.04* (hazardous waste, partly stabilized). After a first evaluation of the nature of these waste typologies, codes other than 19.03.04* were discarded. The analysis focused on the classification number 19.03.04*. This code identifies waste marked as Hazardous Partly Stabilized (WHPS). WHPS is solidified/stabilized waste that after the stabilization process can release dangerous constituents that have not been changed completely into non-dangerous in the short, middle, or long term [42]. The composition of WHPS is strongly heterogeneous, including hazardous waste from waste-processing facilities (e.g., fly and bottom ashes from waste-to-energy plants) or wastewater treatment plants (e.g., industrial sludge). As a consequence, their chemical characteristics are also heterogeneous [43]. Partial stabilization processes have the objective of making the physical and chemical parameters of the waste compatible with those required for their disposal in the landfill. The most employed processes are usually the inertization of waste through reconditioning and homogenization [44]. Inertization consists of mixing waste with reagents or fixatives. The purpose of mixing is to obtain a homogeneous waste, with better characteristics than the starting waste.

The monitoring analyses of the incoming waste corresponding to the CER classification 19.03.04* were considered. The analyses of wastes are systematically done on liquid and solid samples before being conferred to the landfill. In these samples, the concentration of 1,2-dichloroethane and 1,2-dichloropropane was always below the detection limit of the method, namely 0.1 mg/kg. This can be attributed to the chemical characteristics of these two compounds, which are highly volatile in both the solid and liquid state. A deeper analysis was then done on the waste disposal database to identify the waste typologies originating from the code 19.03.04*. The complete list is reported in Table A1 of Appendix A.

4. Discussion

The HRA applied to the ambient air inhalation of workers operating on the landfill site showed that the cumulative risk and hazard index were below the threshold limits indicated by current regulations. The joint contribution of 1,2-dichloroethane and 1,2-dichloropropane was 17.9% and 19.4% for the total risk and HI, respectively. The results found can be compared to other studies on MSW landfills, as no similar studies done on hazardous waste landfills were found in the bibliography. Previous research works mainly focused on aromatics. If halocarbons were considered, only a limited number of substances were included in the analysis. A study conducted on a large municipal solid waste landfill in Beijing, China [5] calculated the health risk of VOC inhalation close to the tipping area. The following ranges of HI were found, depending on the period of the year: Trichloropropane, 4.9×10^{-2} ; benzene, 5.5×10^{-4} – 1.3×10^{-2} ; and tetrachloroethylene, 1.3×10^{-2} – 1.5×10^{-1} . Risk ranges were the following: Benzene, 1.3×10^{-7} – 2.0×10^{-5} ; and tetrachloroethylene, 9.5×10^{-7} – 1.5×10^{-6} . The cumulative HI ranged between 2.5 and 5.7. The cumulative risk range was 1.0×10^{-4} – 3.4×10^{-4} . Aromatics and halogenated compounds contributed the most to carcinogenic risk (79% and 21%, respectively). The cumulative HI was dominated by H₂S (67%), halocarbons (14%), and aromatics (10%). The results of benzene were similar to the average found in the present study. The cumulative risk and hazard index were around two orders of magnitude higher. The contribution of halocarbons to the cumulative risk and HI was similar. Palmiotto et al. [11] presented an HRA of an MSW landfill located in central Italy. The cumulative cancer risk for residents living in the vicinity of the facility (around 1 km) ranged between 2.6×10^{-9} and 3.6×10^{-8} depending on the direction from the center of the landfill. The cumulative HI ranged between 8.1×10^{-6} and 1.6×10^{-4} . These values are around two orders of magnitude lower than the present study, indicating that the risk is significantly affected by the exposure distance. The exposure to vinyl chloride monomer (VCM) indicated a specific risk and

a HI range of 9.2×10^{-11} – 8.8×10^{-9} and 2.0×10^{-7} – 4.0×10^{-5} , respectively. Liu et al. [4] conducted an HRA of the exposure to BTEX in an MSW landfill in China at a distance of 0.5 km from the landfill borders. The result showed cumulative HI between 3.53×10^{-2} and 1.77×10^{-1} and cumulative risk between 9.23×10^{-7} and 4.63×10^{-6} . Regarding the most hazardous substances, the results were the opposite compared to the present study. HI was dominated by toluene ($HI = 2.81 \times 10^{-2}$). The risk of benzene exposure was 1.59×10^{-6} , lower than ethylbenzene (3.46×10^{-6}). Like the present study, the emission rates of toluene and p+m xylene fitted the log-normal distribution. Ethylbenzene fitted a gamma distribution. In another study on a Serbian MSW landfill, a cumulative risk of one order of magnitude lower than the present was found [12]. HCH was the only halocarbon investigated, and its specific risk was 2.28×10^{-8} .

The results presented herein show similarities and differences if compared to existing studies. Both the exposure risk and HI are, except for the Beijing case, not significant. The contribution of halocarbons to the total risk and HI is limited, and BTEX contribute the most. Nevertheless, the analysis of 1,2-dichloroethane and 1,2-dichloropropane showed that even a limited quantity of these substances contributed to increasing the cumulative risk. In fact, considering Table 6, the average concentrations of 1,2-dichloroethane and 1,2-dichloropropane were around 10 times lower than those of benzene and ethylbenzene. The differences between this and other studies may depend on different factors: Waste composition, landfill management, analysis methodology (substances considered, distance, exposure parameters), and features of the area. The methodology presented in this study improved the characterization of the uncertainty associated with HRA calculations, as it allowed definition of the site-specific most probable exposure concentrations of pollutants. The same approach could be extended to other exposure parameters, such as the inhalation rate and body weight. Regarding the area of study, the site location and meteorology are thought to affect the results. Considering site location, different sources of VOC are present in the area of study, in particular traffic emissions coming from the nearby highway. Additionally, this area is characterized by low winds and frequent atmospheric stability conditions, which fosters the accumulation of pollutants and limits dispersion. For these reasons, the presence of BTEX in the study area is also probably generated by exogenous sources, in particular traffic emissions. The bibliographic data reported in Table 4 confirm that traffic can be associated with the emission of aromatic compounds.

To clarify this aspect, concentrations of BTEX measured at the Barricalla site were compared to those measured at the closest public monitoring station, namely the Torino Rebaudengo station, a distant of 6 km from the site. The results are reported in Figure 9 and Table 8. Figure 9 shows that, except in June, benzene concentrations at the Barricalla site are lower or equal to those at the Torino Rebaudengo station. Table 8 shows that, except for ethylbenzene, the average concentration of BTEX at the Barricalla site is lower than or equal to those at the Torino Rebaudengo station. Provided that further analyses are needed to clarify these aspects, these data indicate that BTEX emissions probably come from traffic and other external sources located in the urban area. Halocarbons are not measured in this or other nearby stations, so it was not possible to compare concentration trends of 1,2-dichloroethane, 1,2-dichloropropane, and other halogenated VOCs.

Table 8. Results of the health risk analysis.

Specie	Torino Rebaudengo Monitoring Station ($\mu\text{g}/\text{m}^3$)	Barricalla ($\mu\text{g}/\text{m}^3$)
benzene	2.29	2.33
toluene	7.38	3.01
ethylbenzene	1.34	2.77
meta- and para- xylene	4.68	3.88
ortho-xylene	2.26	1.89

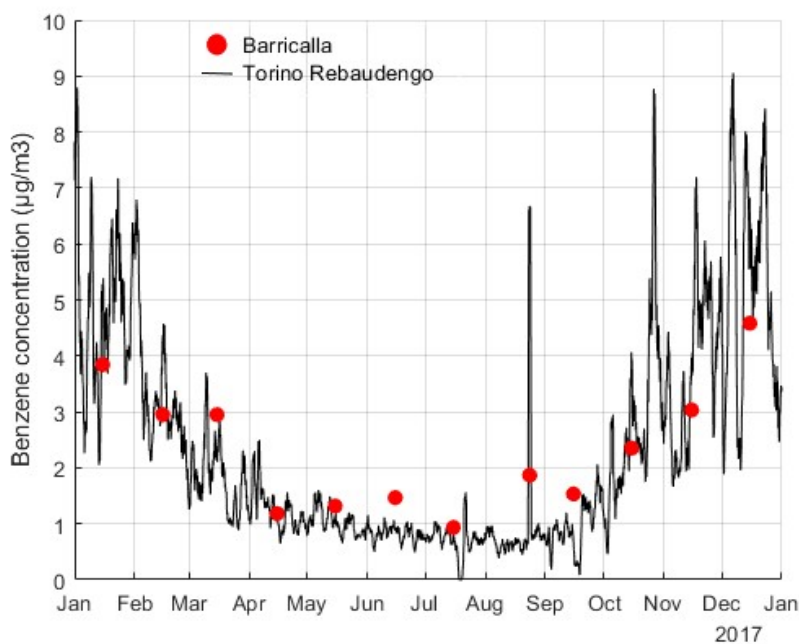


Figure 9. The concentration of benzene in 2017 in Turin. Comparison between the Torino Rebaudengo station and the Barricalla site.

Within the scope of the continuous improvement of the environmental sustainability of the waste management activity at the Barricalla site, considering that this site is incorporated in a heavily anthropized area, some more consideration can be drawn on the characterization of halocarbon emissions done in this study. The spatial and temporal comparison between halocarbon concentrations and waste disposal records did not lead to a clear identification of the waste typologies that are responsible for the emissions. This is because, in many cases, wastes are subject to a partial stabilization process and enter into the landfill with the single comprehensive EWC code 19.03.04* (WHPS, hazardous waste partly stabilized). Besides, concentration measurements were not frequent enough to allow the implementation of a detailed statistical analysis of the concentrations/disposal events. Nevertheless, this study allowed the identification of some possible waste typologies responsible for halocarbon emissions.

1,2-dichloroethane and 1,2-dichloropropane emissions can be produced in different ways. Through the overlay of this information with the list of all the wastes reported in Appendix A, Table A1, it can be concluded that the following waste typologies are not excluded from contributing to halocarbon emissions from the Barricalla site:

- Sludges from on-site effluent treatment containing hazardous substances;
- Filter cakes coming from chemical surface treatment and the coating of metals and other materials;
- Machining sludges and waste-blasting material coming from shaping and physical and mechanical surface treatment of metals and plastics;
- Soil and stones containing hazardous substances;
- Gas treatment wastes coming from incineration or pyrolysis of waste;
- Sludges from physico-chemical treatment of hazardous waste; and
- Sludges containing hazardous substances from the treatment of industrial wastewater.

Emissions of single waste typologies should be assessed by future research studies. Among these typologies, sludge coming from wastewater treatment plants is one of the major contributions in terms of the volume conferred. WWTP sludges are observed to emit halocarbons, including halogenated solvents. Halogenated compounds in industrial wastewater are generated by industrial solvents, varnish removers, refrigerants, soaps, and paints [45]. This and other studies evidenced the presence of

halogenated substances in the sludge. A consistent emission of 1,2-dichloroethane was also measured during the composting process of WWTP sludge [30]. Given the high volume produced and the high costs of disposal, the valorization of WWTP sludge constitutes an important topic of research [46,47].

To confirm or refute these assumptions, it would be important to implement a model to improve the traceability of the incoming waste, to detect the process that generates it. Additionally, a deeper characterization of the incoming waste should be conducted. As explained before, most halocarbons are very volatile substances. Possible measurement techniques able to detect these substances, although expensive, are gas chromatography or infrared spectrometry [48]. Finally, stabilization treatments play a key role in the minimization of residual emissions and the re-use of hazardous waste. Research efforts are being addressed to this scope. Some examples include the inertization of WWTP sludge into a ceramic matrix to use it for structural purposes [49] or the removal of hazardous species from WWTP sludge through electrochemical dewatering [50].

5. Conclusions

Halogenated VOCs or halocarbons are highly volatile compounds that produce negative effects on human health and contribute to the greenhouse effect. Monitoring and limiting the presence of these substances in the atmosphere is thus crucial, in particular where different types of emission sources are present. Fugitive emissions from the working face of hazardous waste landfills can include halocarbons that are originally contained in the waste. This study had a dual objective. The first was evaluating the potential contribution of halocarbons to the health risks for landfill workers. The second was the analysis of the possible waste typologies emitting halocarbons. The Barricalla site, a hazardous waste landfill close to the city of Turin, Italy, was used as a case study. In the first part of the study, a probabilistic approach was adopted to characterize the uncertainty associated with the method. In the case study analyzed, the most probable cumulative risk and hazard index were below the benchmark values. Halocarbons (1,2-dichloroethane and 1,2-dichloropropane) were not the major contributors to the total risk for the workers. Nevertheless, within the scope of the continuous improvement of the air quality in heavily anthropized areas, a deeper evaluation of the possible sources and remediation actions seems to be necessary. The second part of this study showed that different waste typologies can contribute to halocarbon emissions. Among these, sludge generated by industrial wastewater treatment may be significant. In the case study, the analysis showed that possible sources of halocarbons entered into the landfill as “partly stabilized waste” (EWC code 19.03.04*). This represented a criticism in the view of characterizing the processes originating these wastes. From this perspective, it is recommended that further research should focus on (i) improving the traceability of the waste treatment chain and (ii) improving the waste treatment processes (partial stabilization) in a way to limit fugitive emissions.

In conclusion, in hazardous landfill sites in which up-to-date environmental management is conducted, fugitive emissions of halocarbons should not represent a hazard for the health of workers or the nearby population. Nevertheless, in emission contexts where multiple pollution sources are present, different emerging and minor hazardous pollutants, including halocarbons, may be present. These substances may pose a risk to human health even at low concentrations. Their presence should thus be increasingly and extensively monitored, as their role in the overall emission context of urban and peri-urban areas is not negligible.

Author Contributions: Conceptualization, M.Z. and M.R.; methodology, M.Z. and M.R.; software, M.R. and A.F.; validation, M.Z. and M.R.; formal analysis, M.R. and A.F.; investigation, M.R. and A.F.; resources, M.Z.; data curation, A.F.; writing—original draft preparation, M.R. and A.F.; writing—review and editing, M.R.; visualization, M.Z., M.R. and A.F.; supervision, M.Z. and M.R.; project administration, M.Z.; funding acquisition, M.Z. All authors have read and agreed to the published version of the manuscript.

Funding: This research received no external funding.

Acknowledgments: The authors acknowledge Barricalla S.p.A. for the support and the data provided.

Conflicts of Interest: The authors declare no conflict of interest.

Appendix A

Table A1. List of waste typologies constituting the code 19.03.04*.

EWC Code	Description	Potential Emitting Halocarbons? (U = Unlikely; P = Possibly; L = Likely)
0105	drilling muds and other drilling wastes	
010504	freshwater drilling muds and wastes	P
0605	sludges from on-site effluent treatment	
060502*	sludges from on-site effluent treatment containing hazardous substances	L
060503	sludges from on-site effluent treatment other than those mentioned in 06 05 02	L
0701	wastes from the manufacture, formulation, supply and use (MFSU) of basic organic chemicals	
070111*	sludges from on-site effluent treatment containing hazardous substances	L
070112	sludges from on-site effluent treatment other than those mentioned in 07 01 11	L
0704	wastes from the MFSU of organic plant protection products (except 02 01 08 and 02 01 09), wood preserving agents (except 03 02) and other biocides	
070413*	solid wastes containing hazardous substances	U
1002	wastes from the iron and steel industry	
100202	unprocessed slag	U
100207*	solid wastes from gas treatment containing hazardous substances	U
100211*	wastes from cooling-water treatment containing oil	U
1003	wastes from aluminum thermal metallurgy	
100319*	flue-gas dust containing hazardous substances	U
100323*	solid wastes from gas treatment containing hazardous substances	U
1009	wastes from casting of ferrous pieces	
100909*	flue-gas dust containing hazardous substances	U
100911	other particulates containing hazardous substances	U
1011	wastes from manufacture of glass and glass products	
101115*	solid wastes from flue-gas treatment containing hazardous substances	U
101116	solid wastes from flue-gas treatment other than those mentioned in 10 11 15	U
101119*	solid wastes from on-site effluent treatment containing hazardous substances	U
1101	wastes from chemical surface treatment and coating of metals and other materials	
110108*	phosphatising sludges	U
110109*	sludges and filter cakes containing hazardous substances	P
1201	wastes from shaping and physical and mechanical surface treatment of metals and plastics	
120102	ferrous metal dust and particles	U
120114*	machining sludges containing hazardous substances	P

Table A1. Cont.

EWC Code	Description	Potential Emitting Halocarbons? (U = Unlikely; P = Possibly; L = Likely)
120116*	waste blasting material containing hazardous substances	P
120117	waste blasting material other than those mentioned in 12 01 16	P
120118*	metal sludge (grinding, honing and lapping sludge) containing oil	P
1502	absorbents, filter materials, wiping cloths and protective clothing	
150202*	absorbents, filter materials (including oil filters not otherwise specified), wiping cloths, protective clothing contaminated by hazardous substances	U
1603	off-specification batches and unused products	
160303*	inorganic wastes containing hazardous substances	U
160304	inorganic wastes other than those mentioned in 16 03 03	U
1611	waste linings and refractories	
161104	other linings and refractories from metallurgical processes other than those mentioned in 16 11 03	U
161105*	linings and refractories from non-metallurgical processes containing hazardous substances	U
161106	linings and refractories from non-metallurgical processes others than those mentioned in 16 11 05	U
1705	soil (including excavated soil from contaminated sites), stones and dredging spoil	
170503*	soil and stones containing hazardous substances	L
170504	soil and stones other than those mentioned in 17 05 03	L
1709	other construction and demolition wastes	
170903*	other construction and demolition wastes (including mixed wastes) containing hazardous substances	U
170904	mixed construction and demolition wastes other than those mentioned in 17 09 01, 17 09 02 and 17 09 03	U
1901	wastes from incineration or pyrolysis of waste	
190105*	filter cake from gas treatment	P
190107*	solid wastes from gas treatment	P
190113*	fly ash containing hazardous substances	P
1902	wastes from physico/chemical treatments of waste	
190204*	premixed wastes composed of at least one hazardous waste	P
190205*	sludges from physico/chemical treatment containing hazardous substances	L
1908	wastes from wastewater treatment plants not otherwise specified	
190813*	sludges containing hazardous substances from other treatment of industrial wastewater	L
190814*	sludges from other treatment of industrial wastewater other than those mentioned in 19 08 13	L

References

1. Huang, B.; Lei, C.; Wei, C.; Zeng, G. Chlorinated volatile organic compounds (Cl-VOCs) in environment—Sources, potential human health impacts, and current remediation technologies. *Environ. Int.* **2014**, *71*, 118–138. [[CrossRef](#)] [[PubMed](#)]
2. Scheutz, C.; Bogner, J.; Chanton, J.P.; Blake, D.; Morcet, M.; Aran, C.; Kjeldsen, P. Atmospheric emissions and attenuation of non-methane organic compounds in cover soils at a French landfill. *Waste Manag.* **2008**, *28*, 1892–1908. [[CrossRef](#)]
3. Duan, Z.; Lu, W.; Li, D.; Wang, H. Temporal variation of trace compound emission on the working surface of a landfill in Beijing, China. *Atmos. Environ.* **2014**, *88*, 230–238. [[CrossRef](#)]
4. Liu, Y.; Liu, Y.; Li, H.; Fu, X.; Guo, H.; Meng, R.; Lu, W.; Zhao, M.; Wang, H. Health risk impacts analysis of fugitive aromatic compounds emissions from the working face of a municipal solid waste landfill in China. *Environ. Int.* **2016**, *97*, 15–27. [[CrossRef](#)] [[PubMed](#)]
5. Wu, C.; Liu, J.; Liu, S.; Li, W.; Yan, L.; Shu, M.; Zhao, P.; Zhou, P.; Cao, W. Assessment of the health risks and odor concentration of volatile compounds from a municipal solid waste landfill in China. *Chemosphere* **2018**, *202*, 1–8. [[CrossRef](#)]
6. Tan, H.; Zhao, Y.; Ling, Y.; Wang, Y.; Wang, X. Emission characteristics and variation of volatile odorous compounds in the initial decomposition stage of municipal solid waste. *Waste Manag.* **2017**, *68*, 677–687. [[CrossRef](#)]
7. Nair, A.T.; Senthilnathan, J.; Nagendra, S.M.S. Emerging perspectives on VOC emissions from landfill sites: Impact on tropospheric chemistry and local air quality. *Process Saf. Environ. Prot.* **2019**, *121*, 143–154. [[CrossRef](#)]
8. Allen, M.R.; Braithwaite, A.; Hills, C.C. Trace organic compounds in landfill gas at seven U.K. waste disposal sites. *Environ. Sci. Technol.* **1997**, *31*, 1054–1061. [[CrossRef](#)]
9. Vrijheid, M. Health effects of residence near hazardous waste landfill sites: A review of epidemiologic literature. *Environ. Health Perspect.* **2000**, *1*, 101–112.
10. Environment Agency. *Exposure Assessment of Landfill Sites Volume 1: Main Report*; Environment Agency: Bristol, UK. Available online: https://assets.publishing.service.gov.uk/government/uploads/system/uploads/attachment_data/file/291765/scho0910btaw-e-e.pdf (accessed on 23 March 2020).
11. Palmiotto, M.; Fattore, E.; Paiano, V.; Celeste, G.; Colombo, A.; Davoli, E. Influence of a municipal solid waste landfill in the surrounding environment: Toxicological risk and odor nuisance effects. *Environ. Int.* **2014**, *68*, 16–24. [[CrossRef](#)]
12. Petrovic, M.; Sremacki, M.; Radonic, J.; Mihajlovic, I.; Obrovski, B.; Vojinovic Miloradov, M. Health risk assessment of PAHs, PCBs and OCPs in atmospheric air of municipal solid waste landfill in Novi Sad, Serbia. *Sci. Total Environ.* **2018**, *644*, 1201–1206. [[CrossRef](#)] [[PubMed](#)]
13. Cheng, Z.; Sun, Z.; Zhu, S.; Lou, Z.; Zhu, N.; Feng, L. The identification and health risk assessment of odor emissions from waste landfilling and composting. *Sci. Total Environ.* **2019**, *649*, 1038–1044. [[CrossRef](#)] [[PubMed](#)]
14. Çankaya, S.; Pekey, H.; Pekey, B.; Özerkan Aydın, B. Volatile organic compound concentrations and their health risks in various workplace microenvironments. *Hum. Ecol. Risk Assess. Int. J.* **2020**, *26*, 822–842. [[CrossRef](#)]
15. Colman Lerner, J.E.; Sanchez, E.Y.; Sambeth, J.E.; Porta, A.A. Characterization and health risk assessment of VOCs in occupational environments in Buenos Aires, Argentina. *Atmos. Environ.* **2012**, *55*, 440–447. [[CrossRef](#)]
16. Martí, V.; Jubany, I.; Pérez, C.; Rubio, X.; De Pablo, J.; Giménez, J. Human Health Risk Assessment of a landfill based on volatile organic compounds emission, immission and soil gas concentration measurements. *Appl. Geochem.* **2014**, *49*, 218–224. [[CrossRef](#)]
17. Brousseau, J.; Heitz, M. Trace gas compound emissions from municipal landfill sanitary sites. *Atmos. Environ.* **1994**, *28*, 285–293. [[CrossRef](#)]
18. Durmusoglu, E.; Taspinar, F.; Karademir, A. Health risk assessment of BTEX emissions in the landfill environment. *J. Hazard. Mater.* **2010**, *176*, 870–877. [[CrossRef](#)]
19. Kim, K.-H.; Baek, S.O.; Choi, Y.-J.; Sunwoo, Y.; Jeon, E.-C.; Hong, J.H. The Emissions of Major Aromatic Voc as Landfill Gas from Urban Landfill Sites in Korea. *Environ. Monit. Assess* **2006**, *118*, 407–422. [[CrossRef](#)]

20. Zou, S.C.; Lee, S.C.; Chan, C.Y.; Ho, K.F.; Wang, X.M.; Chan, L.Y.; Zhang, Z.X. Characterization of ambient volatile organic compounds at a landfill site in Guangzhou, South China. *Chemosphere* **2003**, *51*, 1015–1022. [CrossRef]
21. Schuhmacher, M.; Meneses, M.; Xifró, A.; Domingo, J.L. The use of Monte-Carlo simulation techniques for risk assessment: Study of a municipal waste incinerator. *Chemosphere* **2001**, *43*, 787–799. [CrossRef]
22. European Community. Directive 2010/75/EU of the European Parliament and of the Council of 24 November 2010 on industrial emissions (integrated pollution prevention and control). *Off. J. Eur. Union L* **2010**, *334*, 17–119.
23. U.S. Environmental Protection Agency Compendium Method TO-15. Determination of Volatile Organic Compounds (VOCs) in Air Collected In Specially-Prepared Canisters And Analyzed By Gas Chromatography/Mass Spectrometry (GC/MS). 1999. Available online: <https://www3.epa.gov/ttnamti1/files/ambient/airtox/to-15r.pdf> (accessed on 23 March 2020).
24. United States Environmental Protection Agency (EPA). Prioritized Chronic Dose-Response Values for Screening Risk Assessments. 2014. Available online: <https://www.epa.gov/sites/production/files/2014-05/documents/table1.pdf> (accessed on 10 April 2020).
25. Canadian Environment Protection Act. 1,2-Dichloroethane. s.l.: Minister of Supply and Services Canada. 1994. Available online: <https://www.canada.ca/en/environment-climate-change/services/management-toxic-substances/list-canadian-environmental-protection-act/1-2-dichloroethane.html> (accessed on 10 April 2020).
26. Agency for Toxic Substances and Disease Registry. 1,2-Dichloropropane. s.l.: U.S. Department of health and Human Services. 1999. Available online: <https://www.atsdr.cdc.gov/ToxProfiles/tp.asp?id=831&tid=162> (accessed on 10 April 2020).
27. Parker, D.; Ham, J.; Woodbury, B.; Cai, L.; Spiels, M.; Rhoades, M.; Trabue, S.; Todd, R.; Cole, A. Standardization of flux chamber and wind tunnel flux measurements for quantifying emissions from area sources at animal feeding operations. *Asabe Annu. Int. Meet.* **2011**, *6*, 11–66.
28. Mathworks Matlab® Software. 2020. Available online: <https://it.mathworks.com/products/matlab.html> (accessed on 10 April 2020).
29. Istituto Nazionale per l'assicurazione Contro gli Infortuni sul Lavoro (INAIL). Chemical Risks for Workers. Operating Manual. 2014. Available online: https://www.inail.it/cs/internet/docs/allegato_rischio_chimico_siti_contaminati.pdf (accessed on 10 April 2020). (In Italian).
30. Zhao, Y.; Lu, W.; Damgaard, A.; Zhang, Y.; Wang, H. Assessment of co-composting of sludge and woodchips in the perspective of environmental impacts (EASETECH). *Waste Manag.* **2015**, *42*, 55–60. [CrossRef] [PubMed]
31. Dai, C.; Zhou, Y.; Peng, H.; Huang, S.; Qin, P.; Zhang, J.; Yang, Y.; Luo, L.; Zhang, X. Current progress in remediation of chlorinated volatile organic compounds: A review. *J. Ind. Eng. Chem.* **2018**, *62*, 106–119. [CrossRef]
32. Mugica, V.; Vega, E.; Sánchez, G.; Reyes, E.; Arriaga, J.L.; Chow, J.; Watson, B.; Egami, R. Volatile organic compounds emission from gasoline and diesel powered vehicle. *AtmÓsfera* **2001**, *14*, 29–37.
33. Franco, J.F.; Pachecho, J.; Belalcazar, L.C.; Behrentz, E. Characterization and source identification of VOC species in Bogotá, Colombia. *AtmÓsfera* **2015**, *28*, 1–11. [CrossRef]
34. Li, B.; Ho, S.S.H.; Xue, Y.; Huang, Y.; Wang, L.; Cheng, Y.; Dai, W.; Zhong, H.; Cao, J.; Lee, S. Characterizations of volatile organic compounds (VOCs) from vehicular emissions at roadside environment: The first comprehensive study in Northwestern China. *Atmos. Environ.* **2017**, *161*, 1–12. [CrossRef]
35. Orecchio, S.; Fiore, M.; Barreca, S.; Vara, G. Volatile Profiles of Emissions from Different Activities Analyzed Using Canister Samplers and Gas Chromatography-Mass Spectrometry (GC/MS) Analysis: A Case Study. *IJERPH* **2017**, *14*, 195. [CrossRef]
36. Hong-li, W.; Sheng-ao, J.; Sheng-rong, L.; Qing-yao, H.; Li, L.; Shi-kang, T.; Cheng, H.; Li-ping, Q.; Chang-hong, C. Volatile organic compounds (VOCs) source profiles of on-road vehicle emissions in China. *Sci. Total Environ.* **2017**, *607–608*, 253–261. [CrossRef]
37. Weingartner, E.; Keller, C.; Stahel, W.A.; Burtscher, H.; Baltensperger, U. Aerosol emission in a road tunnel. *Atmos. Environ.* **1997**, *31*, 451–462. [CrossRef]
38. Ait-Helal, W.; Beeldens, A.; Boonen, E.; Borbon, A.; Boréave, A.; Cazaunau, M.; Chen, H.; Daële, V.; Dupart, Y.; Gaimoz, C.; et al. On-road measurements of NMVOCs and NOx: Determination of light-duty vehicles emission factors from tunnel studies in Brussels city center. *Atmos. Environ.* **2015**, *122*, 799–807. [CrossRef]

39. Hung-Lung, C.; Ching-Shyung, H.; Shih-Yu, C.; Ming-Ching, W.; Sen-Yi, M.; Yao-Sheng, H. Emission factors and characteristics of criteria pollutants and volatile organic compounds (VOCs) in a freeway tunnel study. *Sci. Total Environ.* **2007**, *381*, 200–211. [[CrossRef](#)] [[PubMed](#)]
40. Huang, Y.; Ling, Z.H.; Lee, S.C.; Ho, S.S.H.; Cao, J.J.; Blake, D.R.; Cheng, Y.; Lai, S.C.; Ho, K.F.; Gao, Y.; et al. Characterization of volatile organic compounds at a roadside environment in Hong Kong: An investigation of influences after air pollution control strategies. *Atmos. Environ.* **2015**, *122*, 809–818. [[CrossRef](#)]
41. Hoshi, J.; Amano, S.; Sasaki, Y.; Korenaga, T. Investigation and estimation of emission sources of 54 volatile organic compounds in ambient air in Tokyo. *Atmos. Environ.* **2008**, *42*, 2383–2393. [[CrossRef](#)]
42. Ireland Environmental Protection Agency. *European Waste Catalogue and Hazardous Waste List: Valid from 1 January 2002*; E.P.A.: Wexford, Ireland, 2002; ISBN 978-1-84095-083-0.
43. Pecorini, I.; Baldi, F.; Bacchi, D.; Carnevale, E.A.; Corti, A. Leaching behaviour of hazardous waste under the impact of different ambient conditions. *Waste Manag.* **2017**, *63*, 96–106. [[CrossRef](#)]
44. Sereco Piemonte Company website. Available online: <https://www.serecopiemonte.it/> (accessed on 27 November 2019).
45. Nie, E.; Zheng, G.; Gao, D.; Chen, T.; Yang, J.; Wang, Y.; Wang, X. Emission characteristics of VOCs and potential ozone formation from a full-scale sewage sludge composting plant. *Sci. Total Environ.* **2019**, *659*, 664–672. [[CrossRef](#)]
46. Kiselev, A.; Magaril, E.; Magaril, R.; Panepinto, D.; Ravina, M.; Zanetti, M.C. Towards Circular Economy: Evaluation of Sewage Sludge Biogas Solutions. *Resources* **2019**, *8*, 91. [[CrossRef](#)]
47. Borzooei, S.; Campo, G.; Cerutti, A.; Meucci, L.; Panepinto, D.; Ravina, M.; Riggio, V.; Ruffino, B.; Scibilia, G.; Zanetti, M. Optimization of the wastewater treatment plant: From energy saving to environmental impact mitigation. *Sci. Total Environ.* **2019**, *691*, 1182–1189. [[CrossRef](#)]
48. Carson, P.A.; Mumford, C.J. *Hazardous Chemicals Handbook*; Butterworth-Heinemann: Oxford, UK, 2006; ISBN 978-0-7506-4888-2.
49. Cremades, L.V.; Soriano, C.; Cusidó, J.A. Tackling environmental issues in industrial ceramic sintering of sewage sludge: Odors and gas emissions. *Environ. Dev. Sustain.* **2018**, *20*, 1651–1663. [[CrossRef](#)]
50. Silva, F.L.; Lanza, M.R.V.; Saez, C.; Rodrigo, M.A. Electrochemical dewatering for the removal of hazardous species from sludge. *J. Environ. Manag.* **2019**, *233*, 768–773. [[CrossRef](#)]



© 2020 by the authors. Licensee MDPI, Basel, Switzerland. This article is an open access article distributed under the terms and conditions of the Creative Commons Attribution (CC BY) license (<http://creativecommons.org/licenses/by/4.0/>).