

Continental chemical weathering during the Early Cretaceous Oceanic Anoxic Event (OAE1b)

Xu, Xiao-Tao; Shao, Long-Yi; Lan, Bo; Wang, Shuai; Hilton, Jason; Qin, Jian-Yi; Hou, Hai-Hai; Zhao, Jie

DOI:

[10.1186/s42501-020-00056-y](https://doi.org/10.1186/s42501-020-00056-y)

License:

Creative Commons: Attribution (CC BY)

Document Version

Publisher's PDF, also known as Version of record

Citation for published version (Harvard):

Xu, X-T, Shao, L-Y, Lan, B, Wang, S, Hilton, J, Qin, J-Y, Hou, H-H & Zhao, J 2020, 'Continental chemical weathering during the Early Cretaceous Oceanic Anoxic Event (OAE1b): a case study from the Fuxin fluvio-lacustrine basin, Liaoning Province, NE China', *Journal of Palaeogeography, (in Chinese with English abstract)*, vol. 9, 12, pp. 1-21. <https://doi.org/10.1186/s42501-020-00056-y>

[Link to publication on Research at Birmingham portal](#)

General rights

Unless a licence is specified above, all rights (including copyright and moral rights) in this document are retained by the authors and/or the copyright holders. The express permission of the copyright holder must be obtained for any use of this material other than for purposes permitted by law.

- Users may freely distribute the URL that is used to identify this publication.
- Users may download and/or print one copy of the publication from the University of Birmingham research portal for the purpose of private study or non-commercial research.
- User may use extracts from the document in line with the concept of 'fair dealing' under the Copyright, Designs and Patents Act 1988 (?)
- Users may not further distribute the material nor use it for the purposes of commercial gain.

Where a licence is displayed above, please note the terms and conditions of the licence govern your use of this document.

When citing, please reference the published version.

Take down policy

While the University of Birmingham exercises care and attention in making items available there are rare occasions when an item has been uploaded in error or has been deemed to be commercially or otherwise sensitive.

If you believe that this is the case for this document, please contact UBIRA@lists.bham.ac.uk providing details and we will remove access to the work immediately and investigate.

ORIGINAL ARTICLE

Open Access



Continental chemical weathering during the Early Cretaceous Oceanic Anoxic Event (OAE1b): a case study from the Fuxin fluvio-lacustrine basin, Liaoning Province, NE China

Xiao-Tao Xu^{1,2}, Long-Yi Shao^{1*}, Bo Lan³, Shuai Wang¹, Jason Hilton⁴, Jian-Yi Qin³, Hai-Hai Hou⁵ and Jie Zhao³

Abstract

This study focuses on Early Cretaceous mudstones from the Shapai and Fuxin formations in the Fuxin continental basin. We analyse chemical weathering, land surface temperatures and palaeoclimates based on chemical weathering indices, and emphasize the implications of continental chemical weathering on nutrient fluxes into lakes and oceans. According to Cr and Ni abundance, $\text{Al}_2\text{O}_3\text{-TiO}_2$, La/Sc-Th/Co and V-Ni-Th $\times 10$ plots, as well as rare earth element (REE) analysis, mudstone samples from the Shapai and Fuxin formations were derived from the same type of provenance comprising mainly felsic igneous rocks. Chemical weathering trends reflected by the Chemical Index of Alteration (CIA), Weathering Index of Parker (WIP) and the Mafic Index of Alteration for Oxidative weathering environments ($\text{MIA}_{(\text{O})}$) are consistent with each other and allow the geological succession to be divided into four stages. Land surface temperatures of the Shapai and Fuxin formations are estimated based on the linear relationship of CIA to temperature, and also can be divided into four stages consistent with those determined from chemical weathering trends. During Stage A (early part of the late Aptian) chemical weathering and land surface temperatures were relatively low and showed characteristic high fluctuations, while Stage B (latest Aptian) represented a transitional period where weathering rates and temperatures increased, and high amplitude fluctuations continued. Conditions changed markedly in Stage C (early Albian) with very high and stable weathering, and warm, humid climates, while in Stage D (middle and late Albian) conditions returned to low chemical weathering and land surface temperatures. These stages of chemical weathering and land surface temperature fluctuations represent responses to global climate fluctuations during the Early Cretaceous, with the early Albian high weathering intensities and warm, humid climates combining to create high nutrient levels that would have flushed through rivers into lakes and ultimately oceans. This correlates stratigraphically with the development of Early Cretaceous black shales during Ocean Anoxic Event 1b, showing the importance of continental weathering regimes as a causal mechanism for lake and ocean anoxia.

Keywords: Chemical weathering indices, Land surface temperature, Mudstone, Greenhouse conditions, Ocean Anoxic Event 1b, Black shales

* Correspondence: Shaol@cumtb.edu.cn

¹College of Geoscience and Surveying Engineering, China University of Mining and Technology (Beijing), Beijing 100083, China
Full list of author information is available at the end of the article



© The Author(s). 2020 **Open Access** This article is licensed under a Creative Commons Attribution 4.0 International License, which permits use, sharing, adaptation, distribution and reproduction in any medium or format, as long as you give appropriate credit to the original author(s) and the source, provide a link to the Creative Commons licence, and indicate if changes were made. The images or other third party material in this article are included in the article's Creative Commons licence, unless indicated otherwise in a credit line to the material. If material is not included in the article's Creative Commons licence and your intended use is not permitted by statutory regulation or exceeds the permitted use, you will need to obtain permission directly from the copyright holder. To view a copy of this licence, visit <http://creativecommons.org/licenses/by/4.0/>.

1 Introduction

The Cretaceous is widely recognised as a greenhouse period in Earth history (Wang 2006; Keller 2008; Wang et al. 2014b), with temperatures in the Early Cretaceous warmer and the latitudinal temperature gradient much lower than the present day (Huber et al. 2002; Puc at et al. 2003). However, some studies suggest that episodic cooling might also have occurred during the Early Cretaceous (e.g., Frakes 1999; Price 1999; Puc at et al. 2003; Amiot et al. 2011), and short-term variations of atmospheric CO₂ suggest that equable climates may have been interrupted by periods of climatic change including Oceanic Anoxic Events (OAEs) (Jenkyns 2003; Wang et al. 2014b). Other rapidly changing geological phenomena also were likely to contribute to climatic variation at this time, including eruptions of Large Igneous Provinces (LIPs) (Coffin and Eldholm 1994), rapid increases in ocean crust production (Larson 1991) and Cretaceous Oceanic Red Beds (CORBs) (Wang et al. 2005; Hu et al. 2006). These differing palaeoclimate signals suggest that the greenhouse climates of the Cretaceous may have been transient rather than persistent (Retallack 2009).

Previous Cretaceous palaeoclimate studies have mainly focused on marine deposits (e.g., Wang et al. 2005; Hu et al. 2006; Keller 2008). This is due to the globally high sea level during the Cretaceous (Larson 1991), their overall net deposition, and good stratigraphic control (Gao et al. 2017; Xi et al. 2019). By contrast, little is known from continental records that are typically less complete due to sedimentary erosion and hiatuses, and are much harder to accurately correlate stratigraphically (Wang et al. 2009; Wu et al. 2014; Gao et al. 2017; Cao 2018). Wang et al. (2009) proposed that geologic records retained in continental sediments are important to establish a global climatic model throughout the Cretaceous and to gain a complete interpretation of change mechanisms for Cretaceous climates. Importantly, continental weather regimes determine the levels of nutrients flushed from continents into marine systems through run-off and river systems (Jenkyns 1999, 2003; Erba 2004). In this context, continental weathering exhibits a strong influence on oceanic nutrient levels that can in turn affect marine bio-productivity (Jenkyns 1999, 2003; Leckie et al. 2002; Erba 2004). Therefore, systematic investigations of continental sediments during the Cretaceous deserve further attention in order to evaluate the influence of palaeoclimatically driven chemical weathering on the flux of nutrients entering into the oceans through time, and to analyse the relationship between the changing nutrient inputs and the oceanic processes such as ocean anoxic events.

Chemical weathering displays a strong sensitivity to climate, with temperature and humidity proposed as potential drivers for chemical weathering rates (Nesbitt and Young 1982). Chemical weathering strongly affects

major-element geochemistry (Fedo et al. 1995). Among the major elements, mobile elements such as Ca, Na and K are leached and gradually lost in the form of ions during chemical weathering of the upper crust, while immobile elements such as Al and Ti readily accumulate in weathering residues (Nesbitt and Young 1982). The ratio of mobile to immobile elements of mudstones can potentially be used as a proxy for chemical weathering conditions, using methods such as the Chemical Index of Alteration (CIA; Nesbitt and Young 1982) and the Mafic Index of Alteration for Oxidative weathering environments (MIA_(O); Babechuk et al. 2014). In addition, the bond strengths with oxygen of the most mobile alkali and alkaline elements can also be used as weighting factors for the degree of chemical weathering, such as the Weathering Index of Parker (WIP; Parker 1970).

In the present paper the geochemistry of mudstones from the Fuxin Cretaceous continental basin in NE China has been examined in order to reconstruct the timing and rates of chemical weathering using CIA, WIP and MIA_(O). We use this information to evaluate conditions that control weathering rates including temperature and humidity. The Index of Compositional Variability (ICV; Cox et al. 1995) is used to exclude the influence of sediment recycling and further weathering in sedimentary areas, and the effect of potassium metasomatism on chemical weathering indices is also excluded based on the A-CN-K [Al₂O₃-(CaO* + Na₂O)-K₂O] triangular diagram (Fedo et al. 1995) or CIA_{corr.} formula (Panahi et al. 2000). We investigate the Early Cretaceous Shaihai and Fuxin formations as a case study, and from our results emphasize the implications of continental chemical weathering conditions on contemporaneous lake and ocean anoxia.

2 Geological setting

The Fuxin continental faulted basin, located in western Liaoning Province in northeastern China (Fig. 1a), formed in the Late Jurassic to Early Cretaceous. The basin is situated in the northeast zone of the North China Plate, within a triangular area between the Tanlu and Chifeng-Kaiyuan faults (Fig. 1a) (Wang et al. 1998; Zhu et al. 2007). During the Middle and Late Jurassic, western Liaoning Province was in an unstable tectonic setting due to the southward movement of the Siberian Plate and the northwest subduction of the Pacific Plate (Wang et al. 2001; Zhang 2006). Magmatic activity related to a mantle plume contributed to the development of faulted basins (Okada 1999) and large-scale volcanic eruptions in the margin of eastern Asia during the Early Cretaceous. The Fuxin Basin occupied a palaeolatitude of ~ 45°N during the Early Cretaceous, where the overall temperature was relatively high (Boucot et al. 2009; Li and Jiang 2013).

The Fuxin Basin is bounded by the Lvshan Fault to the east and the Songling Fault to the west, with both faults are NNE-trending (Liu and Chen 1995). It extends from Shala city in the north to the Dalinghe Fault in the south (Fig. 1b) and overlies Archean and Middle Proterozoic strata. Within the basin sedimentary caps are represented by Cretaceous and Cenozoic strata. From the oldest to the youngest, the Lower Cretaceous strata of the Fuxin Basin comprise the Yixian, Jiufotang, Shahai, Fuxin and Sunjiawan formations (National Commission on Stratigraphy of China 2014). Wan et al. (2013) classified the Lower Cretaceous into the Jibei, Jehol and Liaoxi regional stratigraphic stages according to the stratigraphic succession and fossil assemblage from the Songliao Basin to the north of the Fuxin Basin and the northern Hebei to western Liaoning Province. Among them, the Liaoxi regional stage includes from the oldest to the youngest the Shahai, Fuxin and Sunjiawan formations (Fig. 1c), and contains the Fuxin flora. The Fuxin flora is characterized by a dominance of ferns, Ginkgoales and conifers, with abundant Cycads and Equisetales. This flora can be subdivided into three distinct assemblages, comprising in the Shahai Formation the *Acanthopteris-Ginkgo coriacea* assemblage, in the lower-middle part of the Fuxin Formation the *Ruffordia goepperti-Dryopterites* assemblage, and in the upper part of the Fuxin Formation the *Ctenis lyrata-Chilinia* assemblage (Deng et al. 2012).

The middle and upper parts of the Yingcheng Formation and Denglouku Formation in the Songliao Basin correspond to the Shahai Formation and Fuxin Formation in the Fuxin Basin respectively (Xi et al. 2019). Huang et al. (2011) presented zircon U-Pb isotopic ages from volcanic rocks and pyroclastic rocks in the Yingcheng Formation analysed by LA-ICPMS and SHRIMP methods, which provided zircon ages with peaks at 105–112 Ma. Results show that the Yingcheng and Shahai formations were deposited during the late Aptian-early Albian. The *Cicatricosisporites exilis-Hymenozonotriletes mesozoicus* assemblage of the Denglouku Formation is a typical Albian flora in North China. *Kraeuselisporites majus*, *Scopusporis lautus* and *Balmeisporites holodictyus* in this assemblage are found in North America and Australia during the Albian (Huang et al. 2011). According to previous studies, it can be inferred that the Fuxin Formation was deposited during the Albian. The Fuxin Formation was mainly formed in alluvial fan, fan delta and fluvial depositional systems (Xu et al. 2020), while the underlying Shahai Formation represents a set of sedimentary strata mainly deposited in alluvial fan, fan delta and lacustrine depositional systems (Cai et al. 2011). From the bottom to the top the Shahai Formation can be divided into the first, second, third and fourth members (Fig. 1c). We investigate mudstones in the Shahai and Fuxin formations.

3 Methods

3.1 Materials and analytical methods

The DY-1 (41° 52' 45" N - 121° 37' 8" E) and FY-1 (41° 56' 56" N - 121° 36' 60" E) boreholes are located in the central part of the Fuxin Basin, near Dongliang City. From these cores 80 mudstone samples (DY-1 = 50; FY-1 = 30) were collected using a stratified sampling strategy from the bottom to the top of the Shahai and Fuxin formations. Approximately 50 m vertical distance was maintained between samples. For each sample 300 g was collected and retained in air tight, zip-lock plastic bags. Previous studies have shown that mudstones of the Shahai Formation were mainly composed of clay minerals, quartz, feldspar and carbonate minerals, with pyrite present in small amounts or absent. Identified clay minerals include mixed-layer illite-smectite, illite, chlorite and little kaolinite (Chen et al. 2018; Kang et al. 2019). Mudstones contain abundant chemical weathering products derived from their source rocks, allowing the chemical weathering history in the source area to be revealed (Garzanti et al. 2013).

Analyses and tests for major and trace elements were undertaken at the Analytical Laboratory of the Beijing Research Institute of Uranium Geology. Major elements were analysed using an AB104L X-ray fluorescence spectrometer (10271), an AL104 X-ray fluorescence spectrometer (10273), and an Axiosm AX X-ray fluorescence spectrometer (10482). The test procedures followed the methods outlined in Methods for Chemical Analysis of Silicate Rocks-Part 14: Amount Measurement of Ferrous Oxide (GB/T 14506.14–2010), and Methods for Chemical Analysis of Silicate Rocks-Part 28: Determination of 16 major and minor elements content (GB/T14506.28–2010). Trace elements (including rare earth elements) were measured using an ELEMET XR plasma mass spectrometer (9443), following the Methods for Chemical Analysis of Silicate Rocks-Part 30: Determination of 44 elements.

3.2 Chemical Index of Alteration (CIA)

The CIA was defined by Nesbitt and Young (1982) based on the relationship between alumina and alkalis in mudstones, with CIA values being used to assess the chemical weathering degree of provenance. The formula for calculating the CIA using molecular proportions is as follows:

$$\text{CIA} = [\text{Al}_2\text{O}_3 / (\text{Al}_2\text{O}_3 + \text{CaO}^* + \text{Na}_2\text{O} + \text{K}_2\text{O})] \times 100$$

where CaO* represents CaO in silicate-bearing minerals only, and the CaO from non-silicate minerals (carbonate and phosphate) is excluded using the methodology proposed by McLennan (1993). The content of $\text{CaO}_{\text{rest}} = \text{CaO} - (10/3) \times \text{P}_2\text{O}_5$, if $\text{CaO}_{\text{rest}} < \text{Na}_2\text{O}$, then the content of $\text{CaO}^* = \text{CaO}_{\text{rest}}$, otherwise, $\text{CaO}^* = \text{Na}_2\text{O}$.

High CIA values indicate that little Ca, Na and K remains during the chemical weathering process in the

residue relative to stable Al and Ti, which reflects the relatively intense chemical weathering degree in warm and humid climate (Fedo et al. 1995). Conversely, low CIA values reflect the relatively weak chemical weathering degree in cold and dry climate. Fedo et al. (1995) concluded that CIA values between 50 and 60 indicate a low degree of chemical weathering, values between 60 and 80 indicate a moderate degree of chemical weathering, while the CIA values > 80 indicate an extreme degree of chemical weathering.

3.3 Weathering Index of Parker (WIP)

The WIP was established as a chemical weathering index based on the proportions of alkali and alkaline earth metals (sodium, magnesium, potassium and calcium). These elements are the most mobile of the major elements, and their bond strengths with oxygen are also considered (Parker 1970). According to the WIP definition, low WIP values indicate strong chemical weathering, which is the opposite of the CIA. The WIP formula, using molecular proportions, is as follows:

$$\text{WIP} = [(2 \times \text{Na}_2\text{O}/0.35) + (\text{MgO}/0.9) + (2 \times \text{K}_2\text{O}/0.25) + (\text{CaO}^*/0.7)] \times 100$$

where CaO* indicated in the WIP formulation is the same as that defined in CIA.

3.4 Mafic Index of Alteration (MIA)

Babechuk et al. (2014) proposed the Mafic Index of Alteration that extends the equation of the CIA to include the mafic elements Mg and Fe. Among these, the preservation form of Fe is affected by redox environment during the weathering of mafic minerals. In oxidative weathering environments, Fe is retained in the form of ferric iron (Fe³⁺) (Driese 2004), and total iron (total iron is expressed as Fe₂O_{3(T)}) is considered an immobile element along with Al (Babechuk et al. 2014). The Mafic Index of Alteration for Oxidative weathering environments (MIA_(O)) formula using molecular proportions is as follows:

$$\text{MIA}_{(O)} = 100 \times (\text{Al}_2\text{O}_3 + \text{Fe}_2\text{O}_{3(T)}) / (\text{Al}_2\text{O}_3 + \text{Fe}_2\text{O}_{3(T)} + \text{MgO} + \text{CaO}^* + \text{Na}_2\text{O} + \text{K}_2\text{O})$$

where CaO* indicated in the MIA_(O) formulation is the same as that defined in CIA. The high MIA_(O) value indicates a high degree of chemical weathering, while the low value reflects opposite condition (Babechuk et al. 2014).

3.5 Index of Compositional Variability (ICV)

The ICV as proposed by Cox et al. (1995) is applied to mudstones as a measure of compositional maturity. It is used to determine whether the rocks in provenance

undergo sediment recycling (Cullers and Podkovyrov 2000). The ICV formula, using molecular proportions, is as follows:

$$\text{ICV} = (\text{Fe}_2\text{O}_3 + \text{K}_2\text{O} + \text{Na}_2\text{O} + \text{CaO} + \text{MgO} + \text{MnO} + \text{TiO}_2) / \text{Al}_2\text{O}_3$$

Compositionally mature mudstones have low ICV values < 1, whereas compositionally immature mudstones have high ICV values > 1 (Cullers and Podkovyrov 2000). Furthermore, compositionally mature mudstones may undergo sediment recycling or intense chemical weathering under the first-cycle sedimentary conditions (Barshad 1966), and compositionally immature mudstones tend to be found in tectonically active settings and are first-cycle deposits (Kamp and Leake 1985).

3.6 Palaeotemperature estimates

Climatic variation strongly affects chemical weathering intensity, and warm temperatures are beneficial to chemical weathering (Nesbitt and Young 1982). Li and Yang (2010) proposed that CIA values are sensitive to land surface temperature and latitude according to the analyses of suspended sediment in modern large-river estuaries. Yang et al. (2014) demonstrated a linear relationship between CIA and temperature from low to high latitudes, and the linear relationship formula is as follows:

$$T = 0.56 \times \text{CIA} - 25.7 \quad (R^2 = 0.50)$$

where T represents land surface temperature (in °C), which has a positive correlation with CIA. In this study, we used this linear relationship to estimate land surface temperature of the Shapai and Fuxin formations.

4 Results

4.1 Major elements

The major element concentrations are shown in Table 1. In this study, all the major elements are normalized using Post Archean Australian Shale (PAAS) values (Taylor and McLennan 1985) and plotted in Fig. 2.

The variations of major elements normalized by PAAS from the DY-1 core indicate that most of the SiO₂, TiO₂ and Al₂O₃ contents are lower than the PAAS, but the Na₂O content is higher than the PAAS. Contents of Fe₂O₃, MgO and K₂O are not much different from the PAAS, nevertheless, the content ranges of MnO, CaO and P₂O₅ vary greatly (Fig. 2a). The average contents of major elements (Table 1) in the DY-1 core can be summarized as SiO₂ > Al₂O₃ > Fe₂O₃ > K₂O > MgO > CaO > Na₂O > TiO₂ > P₂O₅ > MnO. Among them, the contents of SiO₂ (45.97%–65.50%, average 56.97%) and Al₂O₃ (11.99%–19.02%, average 15.31%) are relatively high. The average contents of Fe₂O₃ (3.43%–8.00%, average 5.71%), K₂O (2.55%–5.13%, average 3.43%), MgO (1.09%–5.11%, average 2.62%), CaO (0.43%–8.80%, average 2.37%) and

Table 1 Major element compositions (in wt.%) of mudstones from the Shahai and Fuxin formations in Fuxin Basin

Borehole	Sample code	Depth/m	SiO ₂	TiO ₂	Al ₂ O ₃	Fe ₂ O _{3(T)}	MnO	MgO	CaO	Na ₂ O	K ₂ O	P ₂ O ₅	LOI	ICV	CIA	CIA _{corr.}	WIP	MIA _(C)	T/°C
DY-1	DY-1-1	144.0	58.36	0.68	14.24	7.36	0.11	3.90	1.36	2.69	3.92	0.14	7.19	1.7	56.8	60.9	58.8	49.8	8.4
	DY-1-2	170.0	59.70	0.78	14.33	8.00	0.12	2.84	0.83	2.30	3.50	0.04	7.51	1.5	61.4	65.3	50.0	56.7	10.9
	DY-1-3	194.6	65.50	0.63	14.04	6.18	0.15	2.98	0.86	2.26	3.29	0.13	3.93	1.4	62.1	65.7	49.3	54.6	11.1
	DY-1-4	225.5	61.59	0.71	15.50	6.64	0.16	3.05	0.60	1.67	3.93	0.02	6.03	1.2	65.8	71.5	44.0	58.6	14.4
	DY-1-5	251.0	60.15	0.65	14.93	7.31	0.11	5.11	0.62	1.19	3.80	0.10	5.98	1.6	68.1	74.7	43.7	52.0	16.1
	DY-1-6	292.6	60.00	0.75	16.31	6.55	0.04	3.14	0.82	2.44	3.46	0.34	6.09	1.3	65.9	69.1	52.5	57.3	13.0
	DY-1-7	342.7	60.59	0.74	16.15	6.76	0.03	3.31	0.57	1.85	3.96	0.22	5.77	1.2	67.3	73.0	46.0	58.7	15.2
	DY-1-8	413.0	59.79	0.82	15.95	5.82	0.02	1.93	0.69	1.86	3.04	0.18	9.89	1.0	69.0	71.6	42.9	63.6	14.4
	DY-1-9	459.0	57.99	0.80	15.62	6.06	0.06	2.15	1.54	1.85	2.93	0.23	10.76	1.2	64.8	66.4	46.5	59.3	11.5
	DY-1-10	472.5	56.90	0.73	14.79	5.46	0.17	1.85	0.79	1.91	2.79	0.18	14.41	1.1	67.3	69.5	42.5	62.0	13.2
	DY-1-11	509.5	60.42	0.80	15.11	6.28	0.03	2.06	1.23	2.00	2.71	0.21	9.14	1.2	65.4	66.7	46.1	59.9	11.7
	DY-1-12	527.0	60.59	0.74	16.22	5.59	0.05	2.19	0.52	1.89	3.47	0.16	8.55	1.0	68.6	72.6	43.6	62.8	14.9
	DY-1-13	528.5	59.95	0.74	16.78	5.04	0.03	1.99	0.50	2.10	3.46	0.13	9.22	0.9	68.3	71.7	45.9	63.1	14.5
	DY-1-14	532.0	59.83	0.65	15.60	5.19	0.02	2.08	0.43	2.03	3.20	0.10	10.83	1.0	68.0	71.3	44.1	62.0	14.2
	DY-1-15	537.0	58.69	0.75	14.89	5.54	0.06	2.50	1.50	1.92	3.21	0.20	10.74	1.3	62.6	65.3	47.5	56.3	10.8
	DY-1-16	540.0	58.01	0.81	16.12	5.67	0.02	1.99	0.73	2.06	3.41	0.17	10.98	1.0	66.8	70.2	45.6	62.4	13.6
	DY-1-17	545.0	57.10	0.78	16.11	6.36	0.03	2.49	0.67	1.97	3.53	0.15	10.74	1.1	67.0	70.9	45.9	60.9	14.0
	DY-1-18	550.5	60.00	0.79	16.06	5.34	0.02	2.10	0.74	2.27	3.41	0.16	9.08	1.1	65.6	68.8	48.3	60.6	12.8
	DY-1-19	552.0	59.97	0.82	15.57	6.60	0.03	2.13	0.83	1.87	3.30	0.22	8.53	1.1	67.1	70.6	43.6	62.4	13.8
	DY-1-20	553.0	59.12	0.70	14.32	5.45	0.02	2.19	0.79	1.78	2.99	0.15	12.48	1.1	66.4	69.6	41.7	60.0	13.3
	DY-1-21	571.0	59.96	0.70	15.15	5.37	0.03	2.07	0.93	2.61	2.57	0.17	10.40	1.2	64.4	65.1	51.7	58.1	10.7
	DY-1-22	579.5	59.35	0.80	15.48	5.39	0.02	2.03	1.38	2.50	2.93	0.22	9.56	1.2	62.5	63.8	52.4	57.6	10.1
	DY-1-23	585.5	58.96	0.75	15.35	5.77	0.03	2.18	1.21	2.46	2.80	0.19	10.21	1.2	63.5	64.6	51.7	57.7	10.5
	DY-1-24	591.5	57.35	0.74	15.24	6.10	0.06	2.39	1.28	2.15	3.13	0.21	11.30	1.2	63.5	65.8	49.0	57.7	11.2
	DY-1-25	594.5	58.42	0.74	15.52	5.98	0.05	2.52	1.25	1.96	3.32	0.22	9.89	1.2	64.4	67.4	47.4	58.1	12.0
	DY-1-26	656.0	55.55	0.74	15.15	6.18	0.12	2.34	2.87	1.65	2.86	0.33	12.17	1.3	64.0	65.5	45.5	57.8	11.0
	DY-1-27	714.5	53.77	0.69	16.66	4.67	0.08	2.48	2.99	1.54	2.82	0.25	14.02	1.1	67.2	68.2	45.7	58.2	12.5
	DY-1-28	769.5	54.86	0.79	16.60	5.23	0.14	2.91	2.30	2.04	3.11	0.21	11.77	1.3	62.2	63.4	54.2	54.0	9.8
	DY-1-29	800.0	53.07	0.74	16.24	5.76	0.14	3.09	2.64	1.65	3.13	0.25	13.28	1.3	64.8	66.7	48.6	55.5	11.7
	DY-1-30	856.0	54.79	0.56	14.47	5.65	0.11	2.34	4.47	1.66	2.74	0.29	12.82	1.3	63.2	64.6	44.9	56.5	10.5
	DY-1-31	948.6	45.97	0.61	12.40	6.35	0.18	2.67	8.80	1.30	2.62	0.64	18.04	1.5	63.5	66.2	38.6	55.6	11.4
	DY-1-32	1000.0	50.62	0.65	14.24	5.32	0.11	2.85	7.08	1.60	2.79	0.23	14.47	1.4	63.2	65.0	45.3	54.1	10.7
	DY-1-33	1031.0	51.38	0.69	15.09	5.42	0.09	2.89	5.48	1.58	3.23	0.22	13.67	1.3	63.4	66.2	45.9	55.2	11.4
	DY-1-34	1080.5	54.22	0.72	16.35	6.15	0.09	3.03	2.59	2.08	3.45	0.22	10.93	1.4	60.7	62.7	54.9	53.8	9.4
	DY-1-35	1124.3	53.58	0.72	15.36	6.26	0.12	2.31	3.78	1.58	3.57	0.28	12.22	1.2	62.9	66.5	44.5	58.7	11.5
	DY-1-36	1157.5	49.69	0.77	15.00	6.42	0.10	2.37	6.17	1.56	3.79	0.32	13.32	1.3	61.9	66.3	44.1	58.3	11.4
	DY-1-37	1176.2	57.00	0.76	15.95	6.53	0.06	2.68	1.61	1.68	3.65	0.20	9.79	1.2	63.5	67.1	46.9	57.8	11.9
	DY-1-38	1202.5	57.14	0.73	14.69	5.74	0.09	2.42	3.43	1.90	2.55	0.22	11.04	1.3	62.0	62.4	48.9	55.0	9.3
	DY-1-39	1248.0	58.22	0.84	17.28	4.42	0.09	1.96	2.02	1.33	4.07	0.26	9.46	0.9	66.3	71.0	41.8	62.5	14.1
	DY-1-40	1280.9	49.24	0.64	13.86	4.39	0.10	1.09	8.17	1.46	3.35	0.31	17.36	1.0	62.2	66.1	37.9	62.7	11.3
	DY-1-41	1322.3	61.82	0.83	16.51	4.40	0.07	1.67	1.93	1.69	3.59	0.24	7.21	1.0	63.6	66.6	45.5	60.6	11.6
	DY-1-42	1378.5	60.68	0.79	15.39	3.43	0.02	1.46	1.70	2.26	3.08	0.13	11.04	1.0	61.0	62.6	50.0	57.6	9.3
	DY-1-43	1496.3	55.71	0.84	19.02	4.15	0.04	1.92	1.45	1.41	4.75	0.17	10.53	0.8	66.2	71.8	44.3	63.7	14.5

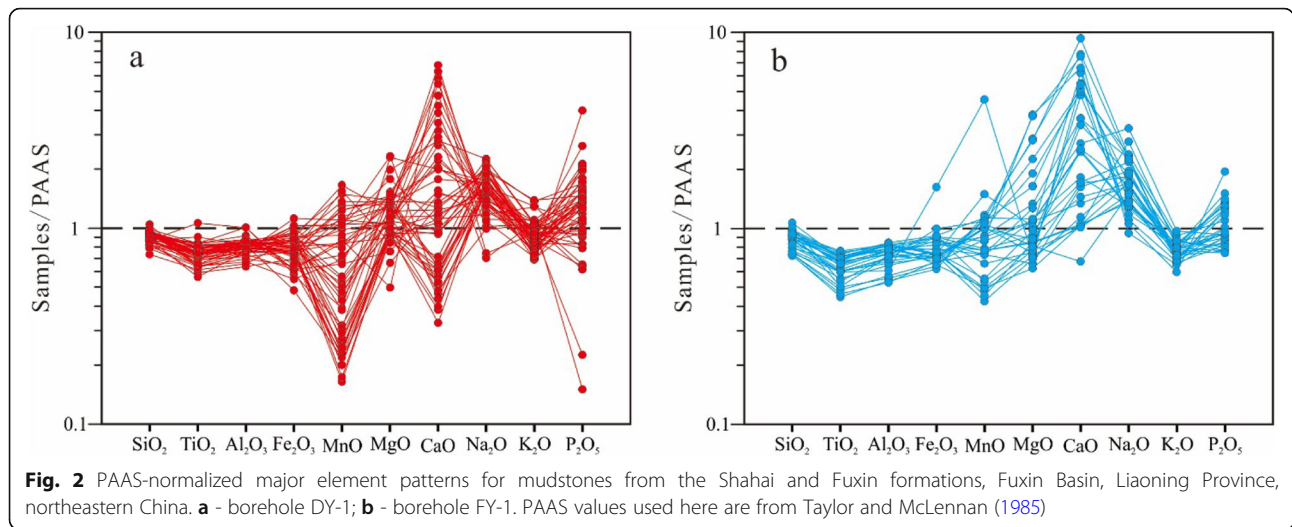
Table 1 Major element compositions (in wt.%) of mudstones from the Shahai and Fuxin formations in Fuxin Basin (*Continued*)

Borehole	Sample code	Depth/m	SiO ₂	TiO ₂	Al ₂ O ₃	Fe ₂ O _{3(T)}	MnO	MgO	CaO	Na ₂ O	K ₂ O	P ₂ O ₅	LOI	ICV	CIA	CIA _{corr.}	WIP	MIA _(O)	T/°C
	DY-1-44	1563.8	55.18	0.69	13.46	5.44	0.14	3.22	5.04	1.22	3.86	0.24	11.46	1.4	62.1	68.6	39.9	54.1	12.7
	DY-1-45	1578.0	52.20	0.59	11.99	4.96	0.13	3.06	7.53	0.89	3.46	0.42	14.76	1.4	64.2	71.5	33.2	54.6	14.4
	DY-1-46	1612.0	59.46	0.64	12.71	3.92	0.08	3.36	4.06	0.84	3.97	0.10	10.82	1.3	64.2	73.1	34.0	53.4	15.2
	DY-1-47	1673.3	54.24	1.06	18.99	4.32	0.03	3.00	1.76	2.40	5.06	0.27	8.84	1.1	61.3	66.3	58.8	55.7	11.4
	DY-1-48	1705.3	51.35	0.76	14.15	7.14	0.07	4.36	3.63	2.70	3.84	0.22	11.76	2.0	52.0	54.7	65.5	45.0	4.9
	DY-1-49	1761.0	54.63	0.90	15.42	6.75	0.05	3.28	1.65	2.34	5.13	0.23	9.57	1.5	56.5	63.2	55.2	53.2	9.7
	DY-1-50	1821.6	55.99	0.64	13.17	4.58	0.04	5.04	2.59	1.95	4.79	0.13	11.06	1.9	53.1	59.8	55.5	42.6	7.8
FY-1	FY-1-1	228.5	52.42	0.61	13.22	7.15	0.12	3.62	7.06	2.02	2.59	0.20	10.97	1.8	58.3	59.2	52.6	49.2	7.5
	FY-1-2	255.5	63.41	0.54	13.76	5.40	0.06	2.15	2.24	2.62	2.72	0.15	6.86	1.5	55.6	56.2	56.4	51.5	5.8
	FY-1-3	301.5	60.08	0.51	13.62	5.04	0.11	1.95	4.72	2.72	2.55	0.19	8.43	1.5	53.8	53.7	58.6	50.2	4.4
	FY-1-4	370.5	58.80	0.66	14.78	5.05	0.12	1.78	4.39	2.28	2.70	0.14	9.28	1.3	58.6	59.0	52.8	54.9	7.4
	FY-1-5	595.5	67.28	0.70	15.72	4.68	0.06	1.38	1.35	3.33	2.98	0.15	2.34	1.1	59.2	60.1	60.1	57.2	7.9
	FY-1-6	701.5	61.31	0.72	15.72	5.35	0.05	1.59	1.36	2.05	2.71	0.12	9.01	1.1	64.9	65.8	47.0	61.0	11.1
	FY-1-7	743.5	61.28	0.64	14.57	5.64	0.08	1.46	2.12	2.36	2.77	0.14	8.91	1.3	58.3	59.0	52.1	56.7	7.3
	FY-1-8	789.5	61.96	0.75	15.79	5.23	0.05	1.54	1.49	2.26	3.18	0.13	7.59	1.1	62.3	64.1	49.7	60.0	10.2
	FY-1-9	828.5	52.89	0.66	14.15	6.19	0.09	1.86	1.35	1.68	2.57	0.14	18.42	1.2	64.9	66.2	42.1	60.2	11.4
	FY-1-10	862.5	58.01	0.67	14.52	5.95	0.09	1.89	3.31	1.98	2.72	0.16	10.66	1.3	60.5	61.4	48.5	56.8	8.7
	FY-1-11	910.5	47.00	0.60	11.55	11.64	0.50	1.57	7.13	1.27	2.22	0.31	16.16	1.6	63.7	65.4	34.2	65.2	10.9
	FY-1-12	940.0	57.42	0.76	15.28	5.57	0.05	1.88	1.37	1.64	2.89	0.12	12.73	1.1	65.5	67.4	43.0	60.7	12.0
	FY-1-13	971.5	58.46	0.72	15.36	5.33	0.06	1.70	1.32	1.80	2.88	0.15	12.19	1.1	65.4	67.1	43.9	61.3	11.9
	FY-1-14	1000.0	57.70	0.71	15.00	6.53	0.06	1.79	0.88	1.80	2.96	0.12	12.12	1.1	66.7	69.3	42.1	63.1	13.1
	FY-1-15	1060.0	59.68	0.72	14.99	5.06	0.11	1.65	2.20	2.21	2.95	0.14	9.98	1.2	58.9	59.9	51.6	56.1	7.9
	FY-1-16	1080.0	59.31	0.77	15.66	6.11	0.08	2.40	1.75	1.99	2.99	0.20	8.72	1.3	62.9	64.4	49.8	57.0	10.4
	FY-1-17	1319.5	54.96	0.60	13.45	5.39	0.10	2.95	4.75	1.88	2.86	0.22	12.76	1.5	59.1	61.0	48.9	51.1	8.4
	FY-1-18	1365.5	55.51	0.70	14.92	5.89	0.10	2.40	3.25	1.56	3.00	0.24	12.40	1.2	64.0	66.2	44.1	57.6	11.4
	FY-1-19	1420.0	55.36	0.72	14.59	6.50	0.10	2.39	3.19	1.53	2.85	0.22	12.21	1.3	64.2	66.2	43.3	58.0	11.4
	FY-1-20	1488.5	49.81	0.68	13.87	6.45	0.07	1.67	6.22	1.42	3.04	0.21	16.54	1.2	63.5	66.6	39.0	61.6	11.6
	FY-1-21	1540.0	50.82	0.60	12.91	5.29	0.17	2.25	8.07	1.64	2.58	0.20	15.12	1.4	61.2	62.8	42.9	54.9	9.4
	FY-1-22	1605.5	57.58	0.74	16.02	6.58	0.13	2.47	2.37	1.57	3.12	0.21	9.19	1.2	65.2	67.3	45.5	58.9	12.0
	FY-1-23	1660.0	56.40	0.69	15.61	6.46	0.09	2.03	1.89	2.04	2.84	0.23	11.37	1.2	62.6	63.5	49.7	58.3	9.9
	FY-1-24	1726.5	46.55	0.49	10.87	4.80	0.10	8.38	8.55	1.33	2.51	0.16	16.24	2.9	60.5	63.5	53.4	33.5	9.8
	FY-1-25	1760.0	45.65	0.47	10.03	4.89	0.11	8.23	9.76	1.14	2.42	0.15	17.13	3.0	61.1	64.8	49.4	33.2	10.6
	FY-1-26	1840.0	47.96	0.56	12.26	5.21	0.11	4.20	6.49	2.86	3.40	0.18	16.32	2.2	48.3	50.4	65.6	40.6	2.5
	FY-1-27	1908.0	55.38	0.62	14.11	4.87	0.08	2.80	3.53	3.89	3.60	0.15	10.82	1.9	46.3	47.2	77.9	42.9	0.8
	FY-1-28	1926.0	48.40	0.61	12.60	5.11	0.12	4.97	6.69	2.68	3.25	0.12	15.44	2.2	50.5	52.4	65.4	39.6	3.6
	FY-1-29	1944.0	46.66	0.50	10.55	4.60	0.12	6.31	10.03	2.67	3.20	0.15	14.91	2.9	46.3	48.6	67.0	33.1	1.5
	FY-1-30	1980.0	45.87	0.45	10.25	4.44	0.13	6.20	12.11	2.79	2.47	0.13	14.99	3.0	46.4	47.0	68.2	32.3	0.6

Fe₂O₃, Total Fe expressed as Fe₂O_{3(T)}; LOI, Loss on ignition; ICV, Index of Compositional Variability (Cox et al. 1995); CIA, Chemical Index of Alteration (Nesbitt and Young 1982); CIA_{corr.}, Corrected CIA (Panahi et al. 2000); WIP, Weathering Index of Parker (Parker 1970); MIA_(O), Mafic Index of Alteration for Oxidative weathering environments (Babechuk et al. 2014); T, Land surface temperature (in °C, Yang et al. 2014)

Na₂O (0.84%–2.70%, average 1.88%) are higher than 1%. Whereas the average contents of TiO₂ (0.56%–1.06%, average 0.74%), P₂O₅ (0.02%–0.64%, average 0.21%) and MnO (0.02%–0.18%, average 0.08%) are all below 1%.

The distributions of major elements from the FY-1 borehole are presented in Fig. 2b. Most of the SiO₂, TiO₂, Al₂O₃ and K₂O contents are lower than the PAAS, the Fe₂O₃ and MnO contents are similar to the



PAAS. Nevertheless, the variation of MgO, CaO, Na₂O and P₂O₅ contents are relatively large, among them, the variation range of CaO content is the most obvious. According to Table 1, the order of major element average contents is as follows: SiO₂ > Al₂O₃ > Fe₂O₃ > CaO > MgO > K₂O > Na₂O > TiO₂ > P₂O₅ > MnO. The contents of SiO₂ (45.65%–67.28%, average 55.13%) and Al₂O₃ (10.03%–16.02%, average 13.86%) are relatively high. The average contents of Fe₂O₃ (4.44%–11.64%, average 5.75%), CaO (0.88%–12.11%, average 4.36%), MgO (1.38%–8.38%, average 2.92%), K₂O (2.22%–3.60%, average 2.85%) and Na₂O (1.14%–3.89%, average 2.10%) are higher than 1%. While the average contents of TiO₂ (0.45%–0.77%, average 0.64%), P₂O₅ (0.12%–0.31%, average 0.17%) and MnO (0.05%–0.50%, average 0.11%) are all less than 1%.

4.2 Rare earth elements

The results of rare earth element (REE) analysis are given in Table 2 and are shown as chondrite-normalized patterns (Boydton 1984) in Fig. 3.

The chondrite-normalized REE patterns (Fig. 3a) are characterized by enriched LREE (light rare earth element; LREE = La + Ce + Pr + Nd + Sm + Eu) and depleted HREE (heavy rare earth element; HREE = Gd + Tb + Dy + Ho + Er + Tm + Yb + Lu). The LREE distribution curves are relatively steep, while the curves of the HREE are relatively flat. These curves show an obvious “V” shape at Eu, indicating negative Eu anomalies. According to Table 2, the ΣREE (total rare earth elements; ΣREE = LREE + HREE) content of mudstones from the DY-1 borehole vary from 115.14–265.76 ppm, with a mean of 189.41 ppm. The LREE contents vary from 106.49–242.74 ppm, with an average of 173.69 ppm, and account for 91.70% of the ΣREE contents, while HREE contents vary from 8.65–

26.81 ppm, with a mean of 15.72 ppm, and account for 8.30%. δEu (δEu = (Eu / Eu_N) / [(Sm / Sm_N) × (Gd / Gd_N)]^{1/2}) values in the DY-1 borehole core vary from 0.36–0.80, with an average of 0.65.

The chondrite-normalized REE patterns of the mudstones in FY-1 borehole (Fig. 3b) are also characterized by relatively enriched LREE and depleted HREE, and negative Eu anomalies. The ΣREE contents (Table 2) in the FY-1 borehole vary from 121.01–219.66 ppm, with an average of 178.23 ppm. The LREE contents vary from 111.17–203.55 ppm, with a mean of 163.05 ppm, and account for 91.48% of the ΣREE contents, while HREE contents vary from 9.84–18.06 ppm, with a mean of 15.18 ppm, accounting for 8.52%. δEu values range from 0.59–0.75, with an average of 0.66.

4.3 Weathering proxies and palaeotemperature

The geological weathering parameters CIA, WIP and MIA_(O), and the land surface temperature for the Shahai and Fuxin formations are given in Table 1.

In the DY-1 borehole, CIA varies from 52.0–69.0, with an average of 63.8; WIP varies from 33.2–65.5, with an average of 47.0; and MIA_(O) varies from 42.6–63.7, with an average of 57.4. The land surface temperatures range from 4.9–16.1 °C, with an average of 11.9 °C. CIA values in the FY-1 borehole vary from 46.3–66.7, with an average of 59.3; WIP varies from 34.2–77.9, with an average of 51.5; and MIA_(O) varies from 32.3–65.2, with a mean of 52.6. In the FY-1 borehole, the land surface temperatures vary between 0.6–13.1 °C, with an average of 8.4 °C.

5 Discussion

5.1 Sedimentary provenance

The REE and immobile trace elements are widely used to discriminate the composition of parent rocks (Cullers

Table 2 Trace element and rare earth element compositions (in ppm) of mudstones from the Shahai and Fuxin formations in Fuxin Basin

Borehole	Sample code	Depth/m	Sc	Cr	Co	Ni	Th	V	La	Ce	Pr	Nd	Sm	Eu	Gd	Tb	Dy	Ho	Er	Tm	Yb	Lu	LREE	HREE	ΣREE	δEu
DY-1	DY-1-1	144.0	20.80	118.00	23.30	51.90	8.95	114.00	41.40	79.50	9.27	37.50	7.02	1.25	4.96	0.80	3.55	0.70	1.97	0.33	2.04	0.29	175.94	14.65	190.59	0.65
	DY-1-2	170.0	19.00	140.00	26.90	48.00	10.60	142.00	41.50	89.80	8.78	33.80	6.02	1.25	4.84	0.72	3.73	0.72	2.22	0.33	2.00	0.29	181.15	14.84	195.99	0.71
	DY-1-3	194.6	14.10	80.40	16.60	39.30	9.09	106.00	44.90	79.90	8.81	35.30	6.10	1.30	5.50	0.81	4.29	0.84	2.48	0.34	2.09	0.31	176.31	16.66	192.97	0.69
	DY-1-4	225.5	16.00	74.00	19.50	42.70	11.10	93.00	44.10	86.90	8.62	32.30	5.66	1.37	5.00	0.78	3.78	0.80	2.15	0.33	2.19	0.31	178.95	15.34	194.29	0.79
	DY-1-5	251.0	15.30	85.20	17.80	39.20	11.00	79.10	36.80	70.00	7.60	27.50	4.77	0.97	4.21	0.68	3.36	0.64	2.08	0.30	1.95	0.30	147.64	13.51	161.15	0.66
	DY-1-6	292.6	8.80	48.30	10.20	24.90	6.05	54.50	28.10	51.10	6.76	24.70	4.63	0.93	3.88	0.63	3.09	0.63	1.78	0.28	1.67	0.23	116.22	12.18	128.41	0.67
	DY-1-7	342.7	20.90	143.00	22.00	58.70	9.98	147.00	50.10	94.00	10.80	42.50	7.95	1.69	6.58	0.93	4.79	0.86	2.38	0.40	2.35	0.37	207.04	18.66	225.70	0.71
	DY-1-8	413.0	8.26	38.50	7.53	22.00	7.69	48.50	31.70	60.30	6.70	23.70	4.26	0.83	3.79	0.55	3.03	0.51	1.66	0.25	1.58	0.23	127.49	11.60	139.08	0.63
	DY-1-9	459.0	14.60	90.90	17.90	53.10	12.40	90.80	47.30	94.30	9.81	36.10	6.42	1.22	6.02	0.88	4.86	0.93	2.74	0.42	2.62	0.37	195.15	18.84	213.99	0.60
	DY-1-10	472.5	14.10	108.00	40.00	98.30	10.70	134.00	57.30	101.00	10.80	38.80	7.23	1.52	6.08	0.89	4.38	0.77	2.43	0.38	2.34	0.36	216.65	17.63	234.28	0.70
	DY-1-11	509.5	13.10	83.40	29.30	85.80	10.50	80.60	47.40	82.40	8.90	32.70	5.45	1.09	5.26	0.80	3.97	0.79	2.37	0.34	2.13	0.31	177.94	15.98	193.92	0.62
	DY-1-12	527.0	12.90	88.60	22.60	55.90	11.20	79.30	45.10	83.80	9.50	35.90	6.02	1.30	4.88	0.84	4.20	0.76	2.13	0.34	2.23	0.33	181.62	15.70	197.32	0.73
	DY-1-13	528.5	12.40	88.30	18.60	40.40	11.00	92.00	49.50	95.30	11.00	41.50	6.86	1.42	5.58	0.89	4.48	0.79	2.23	0.36	2.29	0.32	205.58	16.93	222.51	0.70
	DY-1-14	532.0	12.70	90.40	13.50	38.10	10.30	95.20	35.80	68.30	8.14	30.00	5.02	1.09	4.21	0.69	3.69	0.70	2.12	0.34	2.18	0.33	148.35	14.25	162.60	0.72
	DY-1-15	537.0	12.30	88.00	25.70	65.80	9.62	86.60	38.30	72.60	8.22	30.90	4.89	1.07	4.22	0.69	3.51	0.65	1.87	0.30	2.01	0.30	155.98	13.55	169.53	0.72
	DY-1-16	540.0	11.80	87.20	17.00	41.80	9.96	76.60	40.30	76.70	8.85	32.40	5.39	1.13	4.28	0.73	3.78	0.73	2.05	0.32	2.05	0.32	164.77	14.25	179.02	0.72
	DY-1-17	545.0	13.90	84.70	20.50	67.00	10.30	92.30	47.70	90.60	10.60	39.20	6.30	1.34	5.22	0.82	3.86	0.73	1.97	0.33	2.02	0.31	195.74	15.25	210.99	0.71
	DY-1-18	550.5	12.50	89.90	14.60	40.90	9.82	85.90	40.90	78.00	8.80	33.30	5.51	1.18	4.54	0.74	3.80	0.71	2.12	0.33	2.11	0.31	167.69	14.66	182.35	0.72
	DY-1-19	552.0	13.40	99.10	25.50	51.60	11.70	87.10	43.80	84.80	9.75	36.90	5.98	1.27	4.92	0.82	4.48	0.83	2.40	0.40	2.59	0.39	182.50	16.84	199.34	0.72
	DY-1-20	553.0	12.20	77.70	16.80	45.10	9.55	79.80	36.40	69.40	8.02	29.60	5.02	1.01	4.10	0.65	3.40	0.62	1.87	0.30	1.96	0.31	149.45	13.21	162.66	0.68
	DY-1-21	571.0	10.20	114.00	13.80	44.20	7.36	70.20	42.50	79.20	9.57	35.00	5.91	1.29	4.71	0.77	3.84	0.72	2.08	0.33	2.08	0.30	173.47	14.83	188.30	0.75
	DY-1-22	579.5	12.60	125.00	10.80	37.50	8.61	79.50	43.90	82.00	9.58	35.40	5.92	1.32	4.97	0.83	4.01	0.75	2.25	0.35	2.22	0.32	178.12	15.70	193.82	0.74
	DY-1-23	585.5	11.40	110.00	16.70	49.60	8.81	77.50	36.70	72.00	8.36	30.60	5.07	1.04	4.16	0.69	3.61	0.68	1.95	0.31	2.06	0.30	153.77	13.76	167.53	0.69
	DY-1-24	591.5	11.60	94.60	19.10	53.40	9.96	79.10	39.80	77.50	9.08	32.70	5.56	1.13	4.70	0.80	4.06	0.74	2.08	0.34	2.17	0.32	165.77	15.21	180.98	0.68
	DY-1-25	594.5	10.70	81.60	17.00	49.30	9.29	70.70	39.40	75.40	8.74	31.30	5.23	1.05	4.52	0.73	3.74	0.69	1.95	0.32	2.09	0.29	161.12	14.33	175.45	0.66
	DY-1-26	656.0	14.30	102.00	18.40	52.90	12.40	92.60	48.40	88.60	9.40	33.20	6.23	1.14	6.06	0.88	4.39	0.85	2.63	0.37	2.29	0.35	186.97	17.81	204.78	0.57
	DY-1-27	714.5	13.10	105.00	16.30	45.40	12.50	110.00	35.30	63.10	6.44	22.80	4.43	0.82	4.17	0.65	3.15	0.59	1.73	0.26	1.77	0.26	132.89	12.58	145.46	0.58
	DY-1-28	769.5	14.10	126.00	20.60	58.20	14.30	113.00	38.00	70.40	7.70	28.10	4.88	0.90	4.57	0.68	3.50	0.67	1.85	0.29	1.82	0.26	149.98	13.64	163.62	0.58
	DY-1-29	800.0	16.80	109.00	18.90	56.50	13.80	125.00	33.80	69.40	7.67	30.50	6.05	1.22	5.97	0.89	4.87	0.99	2.79	0.38	2.41	0.36	148.64	18.67	167.31	0.62
	DY-1-30	856.0	11.20	86.80	14.40	40.60	16.00	93.40	48.90	94.90	9.78	36.40	7.57	0.91	7.61	1.29	7.46	1.48	4.15	0.62	3.65	0.56	198.46	26.81	225.27	0.36
	DY-1-31	948.6	16.20	109.00	14.90	46.40	10.70	113.00	44.50	96.90	11.80	46.20	8.28	1.93	7.74	1.24	6.28	1.16	3.09	0.47	2.95	0.42	209.61	23.35	232.96	0.74
	DY-1-32	1000.0	10.80	87.60	12.00	38.10	11.60	78.40	34.80	61.90	6.63	23.30	4.24	0.69	4.20	0.63	3.11	0.61	1.81	0.25	1.57	0.23	131.56	12.41	143.97	0.50

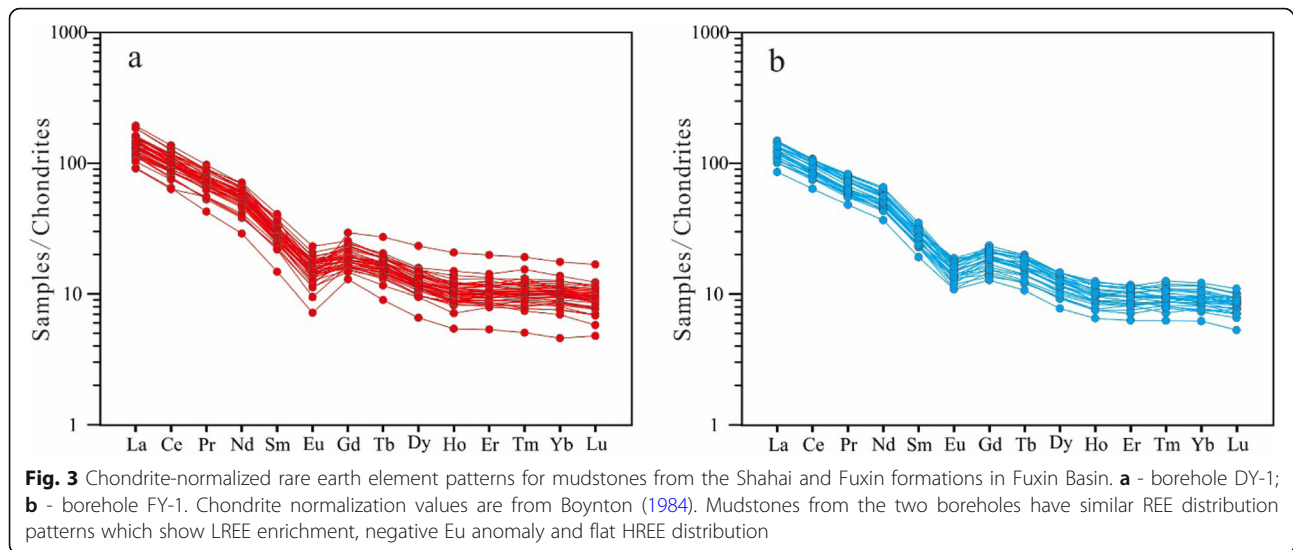
Table 2 Trace element and rare earth element compositions (in ppm) of mudstones from the Shahai and Fuxin formations in Fuxin Basin (Continued)

Borehole	Sample code	Depth/m	Sc	Cr	Co	Ni	Th	V	La	Ce	Pr	Nd	Sm	Eu	Gd	Tb	Dy	Ho	Er	Tm	Yb	Lu	LREE	HREE	ΣREE	δEu
	DY-1-33	1031.0	11.60	87.20	17.10	45.60	12.50	82.50	40.50	78.10	8.92	32.20	5.38	1.12	4.32	0.71	3.53	0.64	1.86	0.30	1.88	0.28	166.22	13.52	179.74	0.71
	DY-1-34	1080.5	12.10	98.60	25.60	69.80	11.50	86.50	35.20	68.50	7.79	28.90	4.88	1.04	4.01	0.62	3.15	0.60	1.68	0.29	1.79	0.26	146.31	12.40	158.71	0.72
	DY-1-35	1124.3	14.00	102.00	14.80	44.40	12.10	106.00	47.10	93.30	10.80	39.50	6.89	1.40	5.73	0.91	4.58	0.88	2.40	0.39	2.50	0.38	198.99	17.76	216.75	0.68
	DY-1-36	1157.5	13.10	123.00	25.90	79.50	11.50	103.00	45.20	87.90	10.30	38.20	6.12	1.29	5.08	0.76	3.85	0.71	2.06	0.32	2.05	0.28	189.01	15.12	204.13	0.71
	DY-1-37	1176.2	12.70	105.00	18.10	52.20	12.60	86.00	40.90	79.30	9.16	34.20	5.76	1.15	4.66	0.77	3.93	0.75	2.17	0.34	2.18	0.32	170.47	15.11	185.58	0.68
	DY-1-38	1202.5	11.10	95.00	16.30	51.10	11.30	74.30	48.60	88.60	9.36	33.80	6.11	1.07	5.93	0.90	4.60	0.81	2.36	0.36	2.14	0.34	187.54	17.43	204.97	0.54
	DY-1-39	1248.0	15.40	81.40	14.10	34.60	16.20	99.60	64.70	111.00	12.70	44.80	8.29	1.25	7.49	1.16	5.60	1.10	3.41	0.50	3.27	0.49	242.74	23.02	265.76	0.49
	DY-1-40	1280.9	12.20	83.10	20.20	54.90	10.40	78.70	44.70	84.10	9.51	35.40	6.07	1.15	5.18	0.77	3.87	0.77	2.17	0.35	2.11	0.29	180.93	15.51	196.44	0.63
	DY-1-41	1322.3	16.10	76.40	14.60	36.70	15.30	86.50	57.20	103.00	10.90	37.50	6.47	1.20	6.23	0.97	5.07	1.07	2.96	0.50	2.86	0.41	216.27	20.06	236.33	0.58
	DY-1-42	1378.5	12.00	95.80	15.70	38.20	11.50	95.70	48.80	90.70	9.21	33.80	5.69	1.08	5.46	0.82	4.47	0.86	2.47	0.42	2.25	0.34	189.28	17.10	206.38	0.59
	DY-1-43	1496.3	15.30	71.90	15.40	45.90	14.00	85.70	45.00	79.70	8.11	28.70	5.17	0.85	5.35	0.80	4.22	0.81	2.31	0.35	1.95	0.29	167.53	16.08	183.61	0.49
	DY-1-44	1563.8	12.70	71.40	16.00	46.30	11.40	87.20	47.20	83.20	9.18	32.40	5.81	1.15	5.76	0.88	4.42	0.76	2.28	0.33	1.97	0.28	178.94	16.69	195.63	0.61
	DY-1-45	1578.0	10.20	87.80	13.20	47.90	10.70	66.20	39.10	79.00	8.82	33.30	5.56	1.34	4.75	0.76	3.66	0.73	1.82	0.34	2.16	0.28	167.12	14.49	181.61	0.80
	DY-1-46	1612.0	10.60	86.30	13.10	38.80	9.76	103.00	40.00	74.40	8.06	28.10	4.84	0.90	4.33	0.63	3.43	0.70	1.90	0.28	1.73	0.26	156.30	13.25	169.55	0.60
	DY-1-47	1673.3	17.40	112.00	19.70	45.40	10.10	162.00	59.90	110.00	11.80	41.50	6.94	1.27	6.38	0.93	4.92	0.82	2.61	0.38	2.31	0.35	231.41	18.70	250.11	0.58
	DY-1-48	1705.3	12.30	88.00	16.50	41.70	8.94	135.00	41.00	76.90	8.15	29.90	5.40	1.01	5.04	0.76	3.86	0.66	1.98	0.31	1.83	0.26	162.36	14.69	177.05	0.59
	DY-1-49	1761.0	11.40	90.90	18.70	48.10	6.65	140.00	42.30	77.80	8.29	29.50	5.30	1.00	5.07	0.78	3.63	0.64	1.73	0.24	1.45	0.19	164.19	13.73	177.92	0.59
FY-1	DY-1-50	1821.6	7.87	60.10	9.15	28.90	4.07	74.50	28.40	52.20	5.19	17.30	2.87	0.53	3.33	0.43	2.11	0.39	1.12	0.16	0.96	0.16	106.49	8.65	115.14	0.52
	FY-1-1	228.5	13.20	107.00	19.90	45.70	8.33	113.00	38.50	72.40	7.75	31.60	5.82	1.37	5.36	0.90	4.30	0.79	2.20	0.31	1.93	0.29	157.44	16.07	173.51	0.75
	FY-1-2	255.5	9.56	96.00	14.90	33.30	7.15	70.00	34.60	65.70	7.19	28.40	5.36	1.19	5.06	0.77	4.24	0.75	2.00	0.31	1.83	0.27	142.44	15.23	157.67	0.70
	FY-1-3	301.5	10.00	100.00	19.30	35.90	5.96	73.50	33.50	61.20	6.76	26.10	4.81	1.13	4.76	0.73	3.75	0.64	1.87	0.26	1.60	0.24	133.50	13.85	147.35	0.72
	FY-1-4	370.5	12.10	90.70	15.30	40.50	8.16	70.00	38.90	68.80	7.58	29.20	5.40	1.10	4.83	0.82	4.21	0.71	2.01	0.30	1.83	0.30	150.98	15.02	166.00	0.66
	FY-1-5	595.5	9.64	111.00	13.30	33.90	8.50	71.10	44.90	82.30	8.85	34.50	6.08	1.39	5.83	0.92	4.57	0.76	2.20	0.31	2.00	0.30	178.02	16.88	194.90	0.71
	FY-1-6	701.5	12.00	97.00	15.00	42.60	9.69	118.00	40.90	81.10	8.64	35.20	5.84	1.34	5.45	0.88	4.18	0.71	2.16	0.35	2.11	0.31	173.02	16.16	189.18	0.73
	FY-1-7	743.5	10.40	104.00	18.10	43.60	8.22	93.50	40.90	76.10	8.25	31.20	5.51	1.29	5.16	0.78	3.98	0.70	2.04	0.30	1.88	0.29	163.25	15.13	178.38	0.74
	FY-1-8	789.5	11.80	104.00	22.10	50.90	9.12	79.90	46.10	87.00	9.07	35.60	5.97	1.23	6.12	0.95	4.71	0.83	2.39	0.33	2.02	0.32	184.97	17.67	202.64	0.62
	FY-1-9	828.5	11.90	112.00	17.70	49.40	8.78	108.00	37.40	67.40	7.59	30.60	5.31	1.09	4.89	0.83	4.02	0.73	2.04	0.31	2.02	0.31	149.39	15.15	164.54	0.65
	FY-1-10	862.5	11.40	78.90	15.00	41.70	8.68	69.70	39.30	72.20	7.80	29.50	5.36	1.05	5.04	0.81	4.38	0.72	2.01	0.29	1.77	0.26	155.21	15.28	170.49	0.62
	FY-1-11	910.5	10.30	62.40	14.80	40.80	8.40	66.30	38.90	75.00	8.05	32.00	5.72	1.12	5.08	0.78	4.25	0.75	2.27	0.33	1.94	0.30	160.79	15.70	176.49	0.64
	FY-1-12	940.0	11.90	93.20	17.00	48.70	10.60	91.60	44.40	86.20	10.10	39.40	6.85	1.28	5.78	0.92	4.71	0.90	2.42	0.41	2.55	0.37	188.23	18.06	206.29	0.62
	FY-1-13	971.5	12.00	87.90	14.60	41.70	9.73	79.10	42.10	83.80	8.84	33.70	6.06	1.19	5.53	0.90	4.72	0.85	2.35	0.34	2.19	0.29	175.69	17.17	192.86	0.63
	FY-1-14	1000.0	11.60	105.00	18.90	44.40	10.90	79.50	45.10	85.20	9.79	38.40	6.52	1.25	5.56	0.88	4.40	0.84	2.28	0.39	2.43	0.34	186.26	17.12	203.38	0.63

Table 2 Trace element and rare earth element compositions (in ppm) of mudstones from the Shahai and Fuxin formations in Fuxin Basin (Continued)

Borehole	Sample code	Depth/m	Sc	Cr	Co	Ni	Th	V	La	Ce	Pr	Nd	Sm	Eu	Gd	Tb	Dy	Ho	Er	Tm	Yb	Lu	LREE	HREE	ΣREE	δEu
	FY-1-15	10600	10.60	96.20	15.10	36.00	9.74	65.30	45.50	85.30	9.98	38.40	64.2	1.27	5.49	0.84	4.17	0.79	2.10	0.36	2.28	0.30	186.87	16.33	203.20	0.65
	FY-1-16	10800	13.70	88.80	20.00	52.80	10.50	81.10	45.60	87.50	9.37	35.70	61.0	1.27	5.71	0.95	4.67	0.88	2.47	0.36	2.20	0.32	185.54	17.56	203.10	0.66
	FY-1-17	13195	11.70	99.70	16.60	48.10	9.81	100.00	37.40	70.00	7.72	28.50	50.3	1.02	4.80	0.74	3.83	0.64	1.87	0.27	1.56	0.26	149.67	13.96	163.63	0.63
	FY-1-18	13655	13.30	111.00	17.90	52.10	11.70	120.00	46.30	89.80	8.97	32.80	60.4	1.20	5.79	0.92	4.78	0.80	2.29	0.34	2.13	0.32	185.11	17.37	202.48	0.62
	FY-1-19	14200	12.50	94.70	17.80	46.80	12.00	81.20	48.40	92.80	10.70	40.50	70.7	1.33	5.94	0.92	4.57	0.88	2.41	0.41	2.55	0.36	200.80	18.04	218.84	0.63
	FY-1-20	14885	15.20	130.00	18.10	49.30	9.69	130.00	50.20	96.60	9.93	38.80	66.8	1.34	5.64	0.89	4.13	0.74	2.21	0.31	1.91	0.28	203.55	16.11	219.66	0.67
	FY-1-21	15400	9.96	84.40	15.40	42.30	11.30	64.30	41.70	82.60	9.39	36.40	61.8	1.11	5.34	0.90	4.40	0.84	2.29	0.38	2.41	0.33	177.38	16.89	194.27	0.59
	FY-1-22	16055	13.70	83.60	19.10	49.60	12.60	114.00	45.50	87.30	9.71	37.40	65.1	1.29	5.62	0.86	4.49	0.84	2.32	0.36	2.21	0.34	187.71	17.04	204.75	0.65
	FY-1-23	16600	12.90	102.00	17.30	49.70	11.70	87.00	39.00	78.30	8.75	33.00	55.8	1.11	4.71	0.75	3.66	0.69	1.88	0.32	1.98	0.28	165.74	14.26	180.00	0.66
	FY-1-24	17265	9.29	58.80	13.90	35.40	8.34	111.00	32.30	69.80	6.81	27.40	46.4	0.98	3.65	0.57	3.08	0.56	1.73	0.23	1.64	0.24	141.93	11.70	153.62	0.72
	FY-1-25	17600	9.28	64.20	13.50	39.30	8.11	71.60	33.10	62.90	6.98	26.90	44.7	0.81	3.82	0.59	2.98	0.55	1.50	0.26	1.54	0.22	135.16	11.45	146.61	0.60
	FY-1-26	18400	9.34	84.90	22.20	58.80	9.65	79.80	37.00	71.10	7.84	30.80	50.4	0.98	4.41	0.67	3.31	0.63	1.71	0.29	1.75	0.24	152.76	13.00	165.77	0.64
	FY-1-27	19080	7.47	74.60	11.40	29.30	9.25	57.20	33.50	61.20	7.17	26.40	45.0	0.88	3.52	0.59	3.06	0.54	1.60	0.27	1.71	0.26	133.65	11.55	145.19	0.67
	FY-1-28	19260	9.65	77.80	13.40	38.00	6.43	70.00	34.70	66.60	7.73	29.20	49.5	1.04	4.17	0.67	3.48	0.64	1.79	0.29	1.72	0.26	144.22	13.02	157.24	0.70
	FY-1-29	19440	8.27	62.60	13.00	37.70	10.20	50.50	31.30	60.30	7.32	26.60	45.3	0.94	3.98	0.66	3.40	0.64	1.76	0.28	1.82	0.25	130.99	12.79	143.78	0.67
	FY-1-30	19800	7.00	70.60	11.50	33.10	6.07	57.20	26.70	51.80	5.91	22.20	37.6	0.80	3.32	0.51	2.52	0.47	1.33	0.21	1.31	0.18	111.17	9.84	121.01	0.69
	Chondrite	-	-	-	-	-	-	-	0.31	0.81	0.12	0.60	0.20	0.07	0.26	0.05	0.32	0.07	0.21	0.03	0.21	0.03	2.11	1.18	3.29	-

Sc, Cr, Co, Ni, Th and V are trace elements; LREE = La + Ce + Pr + Nd + Sm + Eu; HREE = Gd + Tb + Dy + Ho + Er + Tm + Yb + Lu; ΣREE = LREE + HREE; δEu = (Eu / Eu_N) / [(Sm / Sm_N) × (Gd / Gd_N)]^{1/2}; Chondrite data from Boynton (1984)



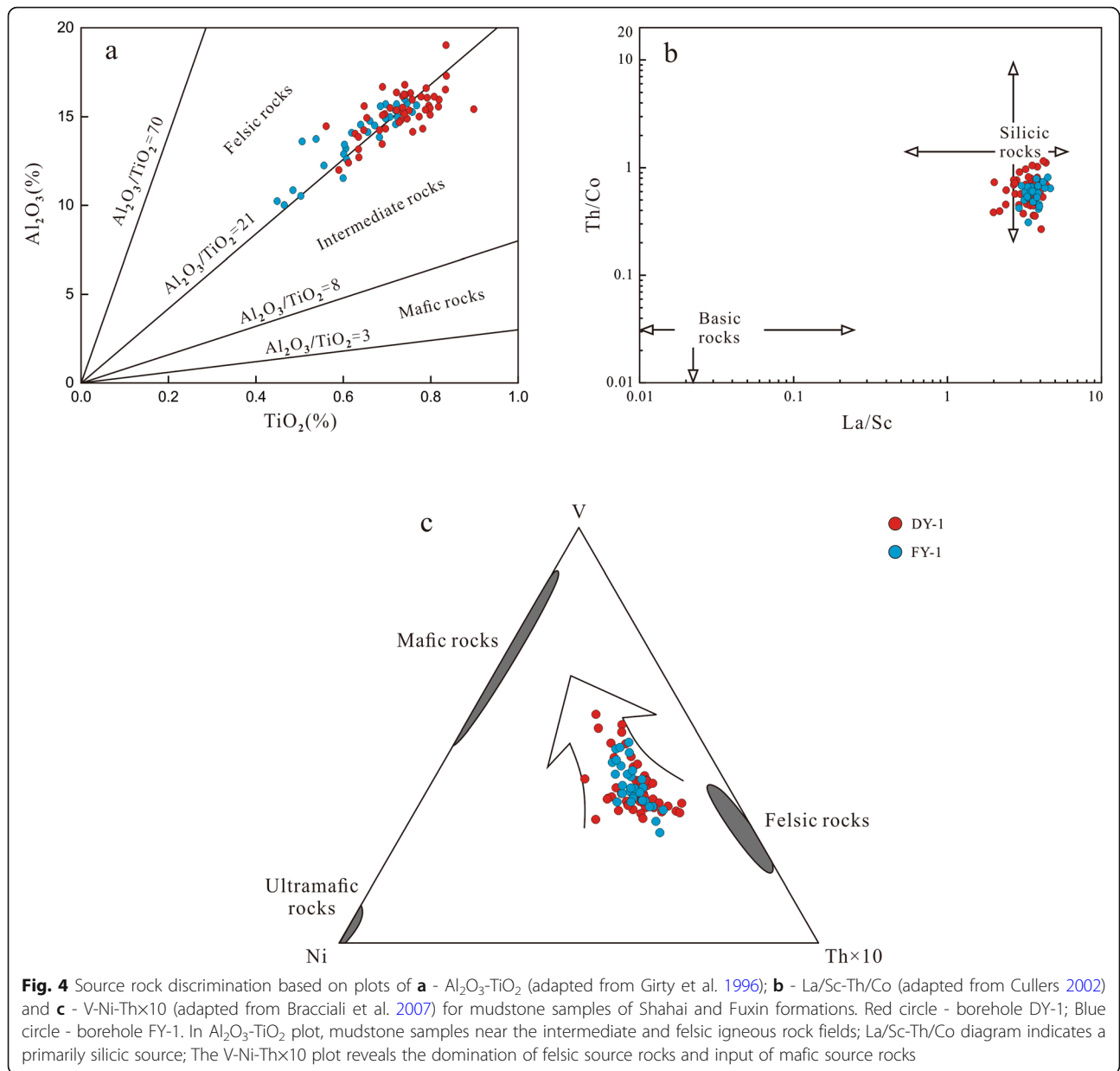
2000; Paikaray et al. 2008; Saha et al. 2010; Armstrong-Altrin et al. 2013; Qiu et al. 2015). Previous studies have used the concentrations of Cr and Ni in siliciclastic sediments as an indicator of source rocks (Garver et al. 1996; Armstrong-Altrin et al. 2018; Hernández-Hinojosa et al. 2018; Ramos-Vázquez and Armstrong-Altrin 2019). Garver et al. (1996) proposed that high Cr and Ni abundance (Cr > 150 ppm and Ni > 100 ppm) are indicative of ultramafic source rocks. In addition, the Al₂O₃/TiO₂ ratio in terrigenous sediments can be used to reflect the properties of the provenance source (Girty et al. 1996; Hayashi et al. 1997; Armstrong-Altrin et al. 2017). Hayashi et al. (1997) demonstrated that the Al₂O₃/TiO₂ ratios from 3 to 8 indicate mafic igneous rocks, ratios of 8–21 indicate intermediate igneous rocks, while ratios between 21 and 70 indicate felsic igneous rocks. The REE patterns and the size of the Eu anomalies in sediments have been used to infer source rock characteristics (Cullers 1994; Saha et al. 2018). Felsic igneous rocks usually contain high LREE/HREE ratios and negative Eu anomalies, whereas mafic igneous rocks contain low LREE/HREE ratios and tend to lack Eu anomalies (Cullers 1994, 2000).

In this study, the low Cr (38.50–143.00 ppm, average 93.40 ppm) and Ni (22.00–98.30 ppm, average 48.65 ppm) values from the DY-1 borehole and low Cr (58.80–130.00 ppm, average 91.10 ppm) and Ni (29.30–58.80 ppm, average 43.05 ppm) values from the FY-1 borehole illustrate an absence of sediments derived from ultramafic source rocks (Table 2). In the Al₂O₃-TiO₂ plot, most of the studied mudstone samples fall near the intermediate and felsic igneous rock fields (Fig. 4a). According to the La/Sc-Th/Co diagram proposed by Cullers (2002), the mudstone samples of the two boreholes mainly reveal silicic rocks as probable

provenance (Fig. 4b). The mudstone samples were also plotted into the V-Ni-Th×10 plot of Bracciali et al. (2007), which shows that samples mainly fall close to the felsic rocks field while some samples shift toward the mafic rocks field (Fig. 4c). Therefore, this plot reveals the dominance of felsic source rocks and some input of mafic source rocks.

REE values in the DY-1 and FY-1 boreholes suggest relatively stable geochemical properties in the sedimentary process, and similar REE patterns indicate sediments from the same type of provenance (Boynton 1984; Taylor and McLennan 1985; Cullers et al. 1987; Wang et al. 2014a). REE patterns (Fig. 3a and b) of mudstone samples from the Shahai and Fuxin formations show the similar distribution curves with the enrichment of LREE and depletion of HREE. All δEu values are < 1 (Table 2), and the REE patterns (Fig. 3) suggest an obvious “V” shape at Eu, which indicates that the existence of obviously negative Eu anomalies. Results of REE analysis show that mudstones of the Shahai and Fuxin formations were dominated by sediments derived from the felsic igneous rocks. Furthermore, the REE patterns of the probable source rocks located nearer to the southwest areas of Fuxin Basin were compared with the REE patterns of the mudstones in the DY-1 and FY-1 boreholes (Fig. 5). The Neoproterozoic granitic complex in western Liaoning Province is mainly composed of porphyrocytic granodiorite and quartz diorite, with a small amount of fine-grained biotite diorite and veined granite, and has the characteristics of input and mixing of mafic magma (Zhang et al. 2016). In this study, the REE patterns of mudstone samples are similar to those of the Neoproterozoic granitic complex with a negative Eu anomaly.

To summarize, the Cr and Ni abundance, Al₂O₃-TiO₂, La/Sc-Th/Co and V-Ni-Th×10 plots and REE pattern comparison reveal that the mudstones in DY-1 and FY-1



boreholes are dominated by sediments derived from the same type of provenance, comprising mainly felsic igneous rocks and a certain amount of intermediate and basic igneous rocks (the Neoproterozoic granitic complex).

5.2 Evaluating influence factors of chemical weathering indices

In recent years, various investigations of chemical weathering indices and especially the CIA, have been successfully used to quantify the chemical weathering degree of provenance area and thus constrain deep-time palaeoclimatic variation (e.g., Paikaray et al. 2008; Yang and Du 2017; Cao et al. 2019; Chaudhuri et al. 2020). Xu and Shao (2018) proposed that the influences of sedimentary differentiation

through grain size differences, sediment recycling, further weathering in sedimentary regions, pedogenesis and potassium metasomatism should be taken into account before estimating the chemical weathering intensity in the provenance area.

Owing to the sedimentary differentiation of transport and deposition, clay minerals are seldom preserved in sandstones, and as a result CIA values calculated from sandstones tend to be very low compared with those calculated from mudstones. Therefore, there is no comparability between the CIA values calculated from sandstone and mudstone. In order to exclude the influence of sedimentary differentiation, all selected samples are mudstones rather than sandstones, and the

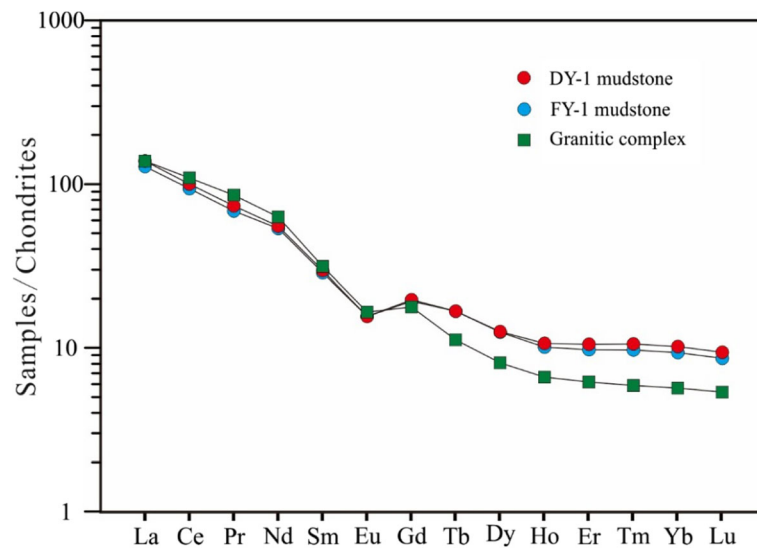


Fig. 5 Average chondrite-normalized rare earth element patterns for mudstones from the Shapai and Fuxin formations in Fuxin Basin. Red circle - borehole DY-1; Blue circle - borehole FY-1; Green square - Neoproterozoic granitic complex from the probable source areas (Zhang et al. 2016). Chondrite normalization values are from Boynton (1984). The REE patterns of mudstone samples from two boreholes are similar to the Neoproterozoic granitic complex with a negative Eu anomaly

calculated CIA values are compared with the CIA standard values of mudstones as proposed by Fedo et al. (1995).

Sediment recycling and further weathering of mudstone in the sedimentary area superimpose the signals of chemical weathering degree, which leads to results calculated by CIA not accurately reflecting the chemical weathering degree of the provenance. Palaeosols indicate that rocks have undergone pedogenesis and leaching to the accompaniment of the loss of Ca, Na and K elements in sedimentary areas, which results in relatively high CIA values. In addition, biological activity and organic acids secreted by plant roots during pedogenesis also accelerate the chemical weathering of palaeosols (Wilson 2004; Skiba 2007; Egli et al. 2008). Seat earths, a type of palaeosol found at the floor of coal seams, represent a period of sedimentary discontinuity (Shao et al. 2005) and cannot reflect the chemical weathering degree of provenance areas only by simple analysis of CIA. Consequently, the samples with high ICV values > 1 belong to the first-cycle of deposition, which should be selected to exclude sediment recycling and further weathering in the sedimentary areas before CIA calculations are undertaken. In this study, the samples far away from the coal seams do not belong to seat earths, having the least influence from further weathering and pedogenesis in the sedimentary area. The ICV values of most samples are > 1, except for samples 13 (0.9), 39 (0.9) and 43 (0.8) from the DY-1 borehole (Table 1), indicating that these samples belong to the first-cycle deposition

under the tectonically active settings, which were selected to calculate CIA.

Potassium metasomatism brings in new potassium elements during diagenesis, resulting in artificially low CIA calculation values. The A-CN-K [Al₂O₃-(CaO* + Na₂O)-K₂O] triangle diagram (Fig. 6; Fedo et al. 1995) or CIA_{corr.} formula proposed by Panahi et al. (2000) can be used to judge and correct potassium metasomatism. The CIA_{corr.} formula using molecular proportions is as follows:

$$CIA_{corr.} = [Al_2O_3 / (Al_2O_3 + CaO^* + Na_2O + K_2O_{corr.})] \times 100$$

$$K_2O_{corr.} = [m \times Al_2O_3 + m \times (CaO^* + Na_2O)] / (1-m)$$

$$m = K_2O / (Al_2O_3 + CaO^* + Na_2O + K_2O)$$

where CaO* only represents the CaO from the silicate fraction, as defined in CIA; K₂O_{corr.} suggests K₂O content in mudstone without potassium metasomatism; m = K₂O / (Al₂O₃ + CaO* + Na₂O + K₂O) for the parent sample. The “m” point (Fig. 6) is the intersection point between the extended line approximately paralleling to A-CN axis and CN-K axis, representing the proportion of K₂O in parent rocks. The weathering trends of some of the mudstones change toward the K₂O apex (Fig. 6), which indicates that these samples underwent a certain degree of potassium metasomatism. The corrected CIA values according to the CIA_{corr.} formula, are increased significantly, which is given in Table 1 in detail. In this study, the CIA_{corr.} values in the DY-1 borehole vary from 54.7–74.7, with an average of 67.2. The CIA_{corr.} values in the

FY-1 borehole vary from 47.0–69.3, with an average of 60.8.

5.3 Characteristics of chemical weathering, land surface temperature and palaeoclimate change

Through correlation of the analyses by CIA_{corr} , WIP and $MIA_{(O)}$, it is concluded that CIA_{corr} is negatively correlated with WIP, while it has a positive correlation with $MIA_{(O)}$ (Fig. 7). The CIA_{corr} , WIP and $MIA_{(O)}$ values of the Shahai and Fuxin formations have obvious changes vertically through the geological succession (Fig. 8 and Table 1). To simplify discussion and interpretation of the results, we subdivided the change trends into four stages. In Stage A, during the first and second members of the Shahai Formation, CIA_{corr} and $MIA_{(O)}$ values, and land surface temperature were relatively low and showed characteristic high fluctuations, while WIP values were relatively high and experienced high amplitude fluctuations. These results suggest a low degree of chemical weathering and frequent changes under relatively low temperature and dry climate conditions. During Stage B in the third member of the Shahai Formation, CIA_{corr} , $MIA_{(O)}$ and land surface temperature values increased noticeably but maintained high amplitude fluctuations, while the WIP values decreased but still fluctuated unsteadily. This stage was a transitional period that indicates

fluctuating degrees of chemical weathering and palaeoclimate. In Stage C, during the fourth member of Shahai Formation, CIA_{corr} , $MIA_{(O)}$, land surface temperature and WIP values tended to be relatively stable after a transition period, which represents a stable and moderate degree of chemical weathering, and relatively warm and humid palaeoclimate. During Stage D in the Fuxin Formation, relative decreases in CIA_{corr} , $MIA_{(O)}$, and land surface temperature values are evidenced, but an increase in WIP shows that the chemical weathering intensity had a downward trend. Comparing CIA_{corr} , WIP and $MIA_{(O)}$ values, the change trend of WIP is contrary to that of CIA_{corr} and $MIA_{(O)}$ (Fig. 7), nevertheless, these chemical weathering indices reflect the same change trends of chemical weathering.

5.4 Interpretation of chemical weathering fluctuations

The compositions of sediments are closely related to the signature of the source area (Cullers 1994, 2000). It is necessary to show that samples have a unified protolith in order to describe palaeoclimate characteristics based on variations of chemical weathering (Cao et al. 2019). In this study, the mudstone samples of the Shahai and Fuxin formations originated from the same type of provenance close to the Fuxin Basin, which results in the similar chemical weathering degrees between provenance

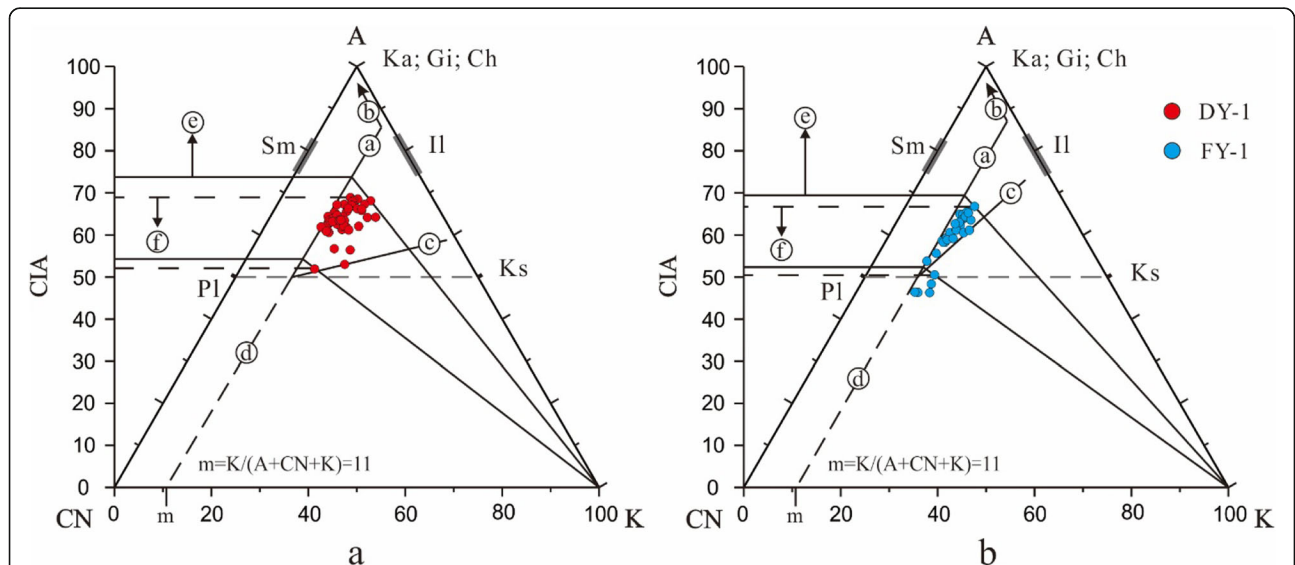
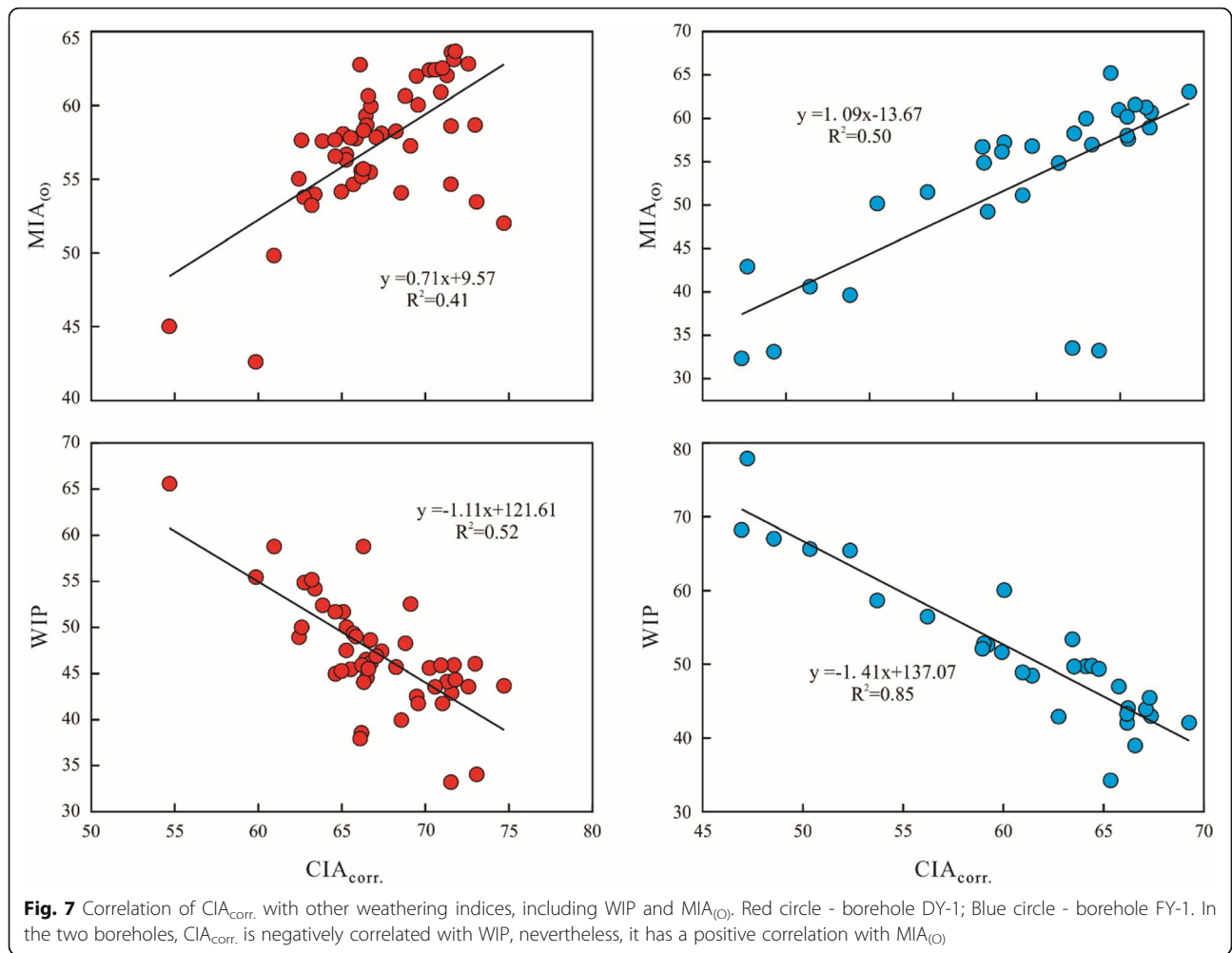


Fig. 6 A-CN-K ternary diagrams (Fedo et al., 1995) for mudstones from the Shahai and Fuxin formations, Fuxin Basin, Liaoning Province, northeastern China. Red circle - borehole DY-1; Blue circle - borehole FY-1. The CIA scales are shown at the left side of each diagram for comparison. Ideal weathering trends are given by solid lines (a) and (b), where solid line (a) is parallel to the A-CN; Solid line (c) is the K-metasomatism trend that resulted from the diagenetic K addition to the samples. Dotted line (d) is the reverse extension line of solid line (a). Solid line (e) shows premetasomatized CIA value. Dotted line (f) represents CIA value after K-metasomatism. Ideal compositions of minerals labelled: Pl, plagioclase; Ks, K-feldspar; Il, illite; Sm, smectite; Ka, kaolinite; Gi, gibbsite; Ch, chlorite

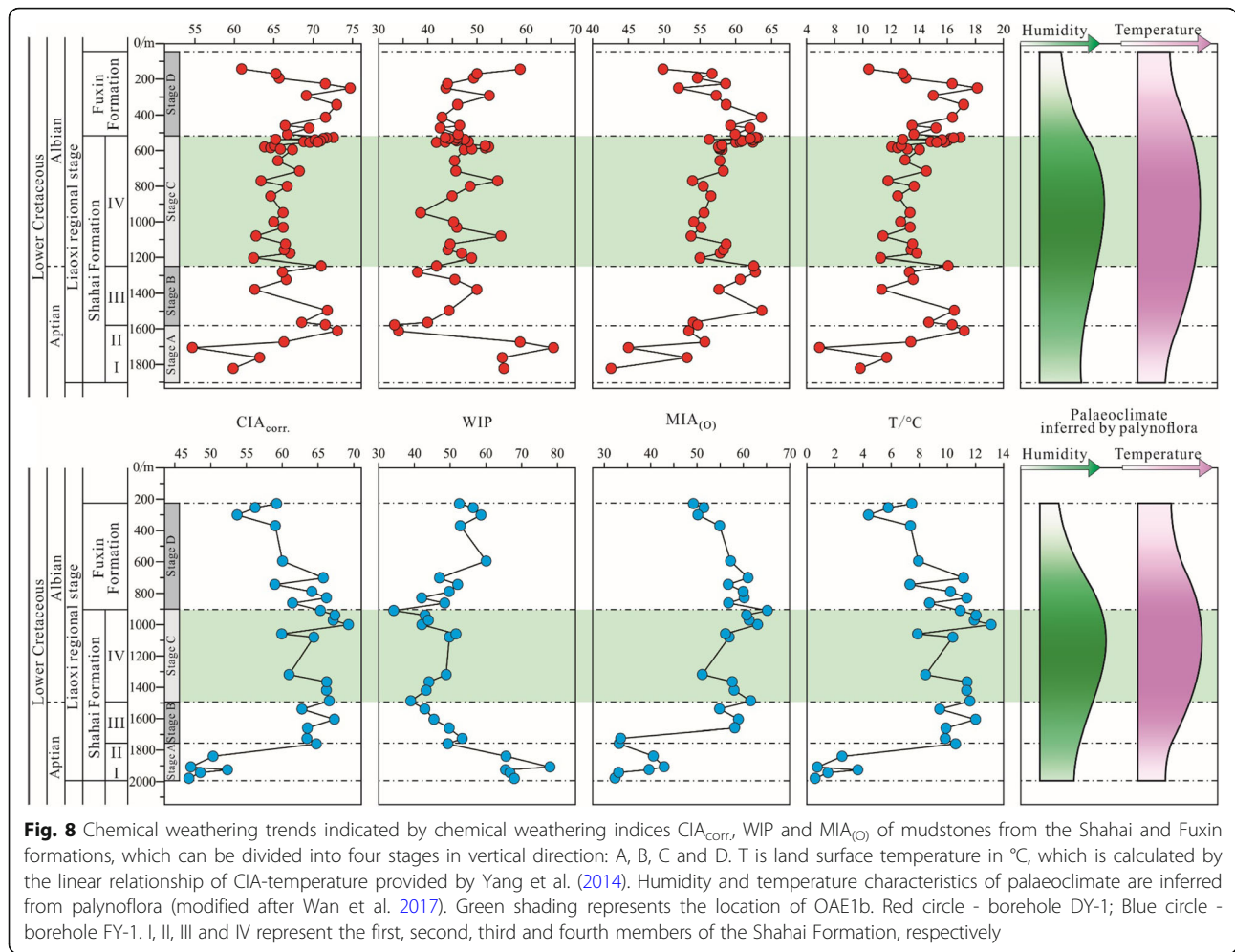


and sedimentary areas. Therefore, chemical weathering characteristics in provenance area can approximately reflect the chemical weathering change in the sedimentary area. Through the analysis of $CIA_{corr.}$, WIP and $MIA_{(O)}$, it is concluded that the trends of these chemical weathering indices are highly consistent and can be divided into four stages in vertical direction (Fig. 9).

Weissert and Lini (1991) provided the data on carbonate carbon isotopes in the Early Cretaceous, which shows the global climate became relatively cold during the middle and late Aptian. Wan et al. (2017) proposed that the palynoflora in northeastern China was dominated by herbaceous and coniferous forests during the early Liaoxi regional stage (late Aptian), indicating relatively low temperature and humidity (Fig. 9). The weakening trend of chemical weathering in Stage A could represent a response to relatively global climate cooling during the late Aptian.

Volcanic eruptions occurred frequently in western Liaoning Province during the Early Cretaceous,

occurring in four separate intervals respectively at 132 ± 1 Ma, 126 ± 1 Ma, 122 ± 2 Ma and 115 ± 2 Ma (Ji 2004; Cai et al. 2010). Of these, the fourth period of volcanic activity ($\sim 115 \pm 2$ Ma) occurred during the late Aptian. Volcanic eruptions released large quantities of CO_2 into the atmosphere, aggravating the greenhouse effect (Kerr 1998; Larson and Erba 1999; Jenkyns 2003; Yevenes et al. 2019). Furthermore, this triggered the acceleration of the hydrological cycle, involving greater evaporation and precipitation, and consequently intensified chemical weathering and transport rates of nutrients from continents into lakes and oceans where it increased productivity in the surface waters (Jenkyns 1999, 2003; Erba 2004; Leckie et al. 2002). Ultimately, nutrients are flushed through rivers into lakes and oceans, where decaying organic matter on the surface water consumes oxygen in the descent process, which in turn leads to the anoxia of the water (Weissert 1989). In such a context, black shale can be formed in lakes and oceans with the



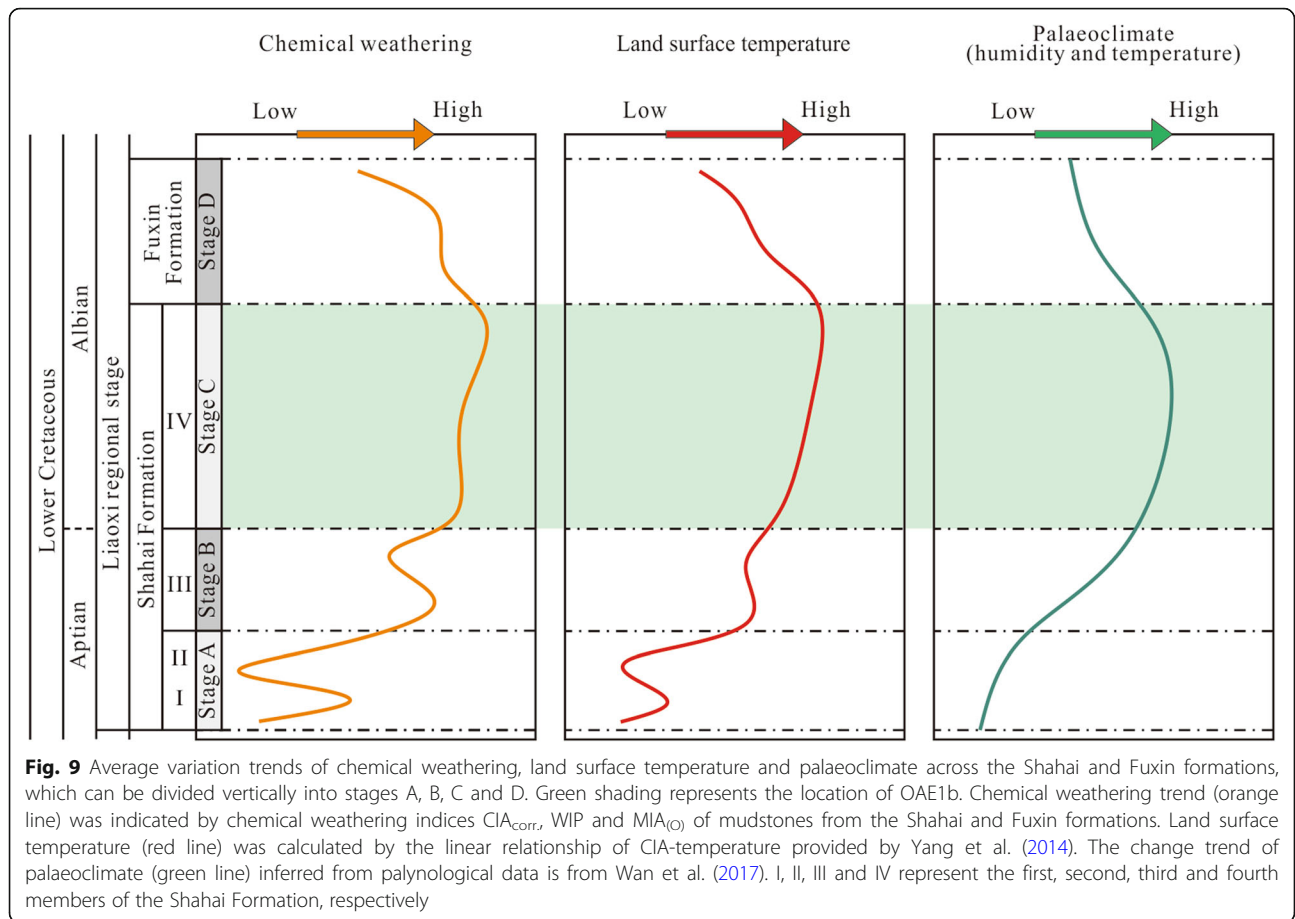
strengthening of the anoxic zone in bottom waters. An Ocean Anoxic Event occurred during the late Aptian-early Albian (OAE1b: ~113–109 Ma; Leckie et al. 2002), which correlates with the increasing (Stage B, latest Aptian) and intense chemical weathering (Stage C, early Albian) in the Fuxin Basin. Elevated weathering levels and high temperatures during Stage C in particular would have produced high nutrient levels that were flushed into lakes and ultimately into oceans through the hydrological cycle, contributing to anoxia and black shales in lake and marine systems.

6 Conclusions

The purpose of this study is to characterize and reconstruct the chemical weathering degree in the Fuxin continental basin during the Early Cretaceous, and to further constrain palaeoclimate conditions by analysing chemical weathering proxies for this time interval. Mudstone samples of Fuxin Basin provide an opportunity to reconstruct chemical weathering changes.

Cr and Ni abundance, Al_2O_3 - TiO_2 , La/Sc-Th/Co and V-Ni-Th $\times 10$ plots, as well as rare earth elements analysis indicate that the mudstones in DY-1 and FY-1 boreholes originated from the same type of provenance consisting mainly of felsic igneous rocks.

The trends of chemical weathering reflected by CIA_{corr} , WIP and $MIA_{(O)}$ permit the identification of four stages vertically through the geological succession. In Stage A during the early part of the late Aptian, weak chemical weathering correlates with relatively cool global climates supported by palynofloras that are dominated by herbaceous and coniferous forests in northeastern China during the early Liaoxi regional stage. Stage B during the latest Aptian was a transitional period and chemical weathering and land surface temperature increased but maintained high amplitude fluctuations. By contrast, conditions in Stage C during the early Albian were stable and showed enhanced chemical weathering and warm, humid climates. This stage correlates with Ocean Anoxic Event 1b, inferring that enhanced chemical weathering at this time produced high nutrient



levels that were flushed into lakes and marine systems, triggering anoxia and deposition of black shales. Finally, in Stage D during the middle and late Albian, conditions returned to low chemical weathering rates and lower land surface temperatures.

Of these stages, only the early Albian was characterized by intensified chemical weathering, high temperatures and high humidity which were associated with the flux of high nutrients into lakes and ultimately oceans, contributing to eutrophication and anoxia in lacustrine and marine systems.

Abbreviations

CIA: Chemical Index of Alteration; WIP: Weathering Index of Parker; $MIA_{(O)}$: Mafic Index of Alteration for Oxidative weathering environments; OAEs: Oceanic Anoxic Events; OAE1b: Oceanic Anoxic Event 1b; LIPs: Large Igneous Provinces; CORBs: Cretaceous Oceanic Red Beds; NE: North-east; REE: Rare earth element; LREE: Light rare earth element; HREE: Heavy rare earth element; ICV: Index of Compositional Variability; A-CN-K: $Al_2O_3-(CaO^* + Na_2O)-K_2O$

Acknowledgements

We thank the Editor-in-Chief, Zeng-Zhao Feng, editor Yuan Wang and Xiu-Fang Hu, reviewers Santanu Banerjee and John S. Armstrong-Altrin for their constructive comments to improve the manuscript.

Authors' contributions

Xiao-Tao Xu carried out the data analysis and drafted the manuscript. Long-Yi Shao conceived the study and helped to revise the manuscript. Bo Lan performed the experiment analysis. Shuai Wang participated in the design and coordination. Jason Hilton helped to revise the manuscript and polish it in English language. Jian-Yi Qin helped to the statistical analysis. Hai-Hai Hou helped to revise the manuscript. Jie Zhao helped to collect samples from boreholes. All authors read and approved the final manuscript.

Funding

This study was supported by the Yue Qi Scholar Fund of China University of Mining and Technology (Beijing), the National Natural Science Foundation of China (41572090), and Shandong Key Laboratory of Depositional Mineralization & Sedimentary Mineral, Shandong University of Science and Technology (DMSM20190015).

Availability of data and materials

All data generated or analysed during this study are included in the manuscript.

Competing interests

The authors declare that they have no competing interests.

Author details

¹College of Geoscience and Surveying Engineering, China University of Mining and Technology (Beijing), Beijing 100083, China. ²Shandong Key Laboratory of Depositional Mineralization & Sedimentary Mineral, Shandong University of Science and Technology, Qingdao 266590, China. ³Northeast China Coalfield Geology Bureau 107 Exploration Team, Fuxin 123000, China. ⁴School of Geography, Earth and Environmental Sciences, University of

Birmingham, Edgbaston, Birmingham B15 2TT, UK. ⁵College of Mining, Liaoning Technical University, Fuxin 123000, China.

Received: 16 September 2019 Accepted: 5 March 2020

Published online: 26 April 2020

References

- Amiot, R., X. Wang, Z. Zhou, X.L. Wang, E. Buffetaut, C. Lécuyer, Z.L. Ding, F. Fluteau, T. Hibino, N. Kusuhashi, J.Y. Mo, V. Suteethorn, Y.Q. Wang, X. Xu, and F.S. Zhang. 2011. Oxygen isotopes of east Asian dinosaurs reveal exceptionally cold early Cretaceous climates. *Proceedings of the National Academy of Sciences of the United States of America* 108 (13): 5179–5183. <https://doi.org/10.1073/pnas.1011369108>.
- Armstrong-Altrin, J.S., Y.I. Lee, J.J. Kasper-Zubillaga, and E. Trejo-Ramírez. 2017. Mineralogy and geochemistry of sands along the Manzanillo and El Carrizal beach areas, southern Mexico: Implications for palaeoweathering, provenance and tectonic setting. *Geological Journal* 52: 559–582. <https://doi.org/10.1002/gj.2792>.
- Armstrong-Altrin, J.S., R. Nagarajan, J. Madhavaraju, L. Rosalez-Hoz, Y.I. Lee, V. Balaram, A. Cruz-Martínez, and G. Avila-Ramírez. 2013. Geochemistry of the Jurassic and Upper Cretaceous shales from the Molango region, Hidalgo, eastern Mexico: Implications for source-area weathering, provenance, and tectonic setting. *Comptes Rendus Geoscience* 345: 185–202. <https://doi.org/10.1016/j.crte.2013.03.004>.
- Armstrong-Altrin, J.S., M.A. Ramos-Vázquez, A.C. Zavala-León, and P.C. Montiel-García. 2018. Provenance discrimination between Atasta and Alvarado beach sands, western Gulf of Mexico, Mexico: Constraints from detrital zircon chemistry and U-Pb geochronology. *Geological Journal* 53: 2824–2848. <https://doi.org/10.1002/gj.3122>.
- Babechuk, M.G., M. Widdowson, and B.S. Kamber. 2014. Quantifying chemical weathering intensity and trace element release from two contrasting basalt profiles, Deccan traps, India. *Chemical Geology* 363: 56–75. <https://doi.org/10.1016/j.chemgeo.2013.10.027>.
- Barshad, I. 1966. The effect of variation in precipitation on the nature of clay mineral formation in soils from acid and basic igneous rocks, Proceedings International Clay Conference, 167–173.
- Boucot, A.J., X. Chen, C.R. Scotese, and J.X. Fan. 2009. *Global Palaeoclimate reconstruction in the Phanerozoic*. Beijing: Science Press (in Chinese).
- Boynton, W.V. 1984. Cosmochemistry of the rare earth elements: Meteorite studies. In *Rare Earth Element Geochemistry*, ed. P. Henderson, 63–114. Amsterdam: Elsevier.
- Bracciali, L., M. Marroni, L. Pandolfi, and S. Rocchi. 2007. Geochemistry and petrography of Western Tethys Cretaceous sedimentary covers (Corsica and Northern Apennines): From source areas to configuration of margins. In *Sedimentary Provenance and Petrogenesis: Perspectives from Petrography and Geochemistry*, ed. J. Arribas, S. Critelli, and M.J. Johnsson, 73–93. Florence: Geological Society of America Special Paper 420.
- Cai, H.A., B.F. Li, L.Y. Shao, D.B. Xu, K. Shao, and Y.Y. Zhou. 2011. Sedimentary environments and coal accumulation patterns of the Lower Cretaceous Shaihai Formation in Fuxin Basin, Liaoning Province. *Journal of Palaeogeography* 13 (5): 481–491 (in Chinese with English abstract).
- Cai, H.A., D.B. Xu, B.F. Li, and L.Y. Shao. 2010. A study on Early Cretaceous volcanic effusion periods and isotope chronology in western Liaoning. *Coal Geology and Exploration* 22 (12): 1–6 (in Chinese with English abstract).
- Cao, K. 2018. Cretaceous terrestrial deposits in China. *China Geology* 3: 402–414.
- Cao, Y., H.Y. Song, T.J. Algea, D.L. Chu, Y. Du, L. Tian, Y.H. Wang, and J.N. Tong. 2019. Intensified chemical weathering during the Permian-Triassic transition recorded in terrestrial and marine successions. *Palaeogeography, Palaeoclimatology, Palaeoecology* 519: 166–177. <https://doi.org/10.1016/j.palaeo.2018.06.012>.
- Chaudhuri, A., S. Banerjee, and G. Chauhan. 2020. Compositional evolution of siliciclastic sediments recording the tectonic stability of a pericratonic rift: Mesozoic Kutch Basin, western India. *Marine and Petroleum Geology* 111: 476–495. <https://doi.org/10.1016/j.marpetgeo.2019.08.026>.
- Chen, D.Y., J.C. Zhang, X.M. Wang, B. Lan, Z. Li, and T. Liu. 2018. Characteristics of lacustrine shale reservoir and its effect on methane adsorption capacity in Fuxin Basin. *Energy & Fuels* 32: 11105–11117. <https://doi.org/10.1021/acs.energyfuels.8b01683>.
- Coffin, M.F., and O. Eldholm. 1994. Large igneous provinces: Crustal structure, dimensions, and external consequences. *Reviews of Geophysics* 32: 1–36. <https://doi.org/10.1029/93RG02508>.
- Cox, R., D.R. Lowe, and R.L. Cullers. 1995. The influence of sediment recycling and basement composition on evolution of mudrock chemistry in the southwestern United States. *Geochimica et Cosmochimica Acta* 59 (14): 2919–2940.
- Cullers, R.L. 1994. The controls on the major and trace element variation of shales, siltstones, and sandstones of Pennsylvanian-Permian age from uplifted continental blocks in Colorado to platform sediment in Kansas, USA. *Geochimica et Cosmochimica Acta* 58 (22): 4955–4972.
- Cullers, R.L. 2000. The geochemistry of shales, siltstones and sandstones of Pennsylvanian-Permian age, Colorado, USA: Implications for provenance and metamorphic studies. *Lithos* 51: 181–203.
- Cullers, R.L. 2002. Implications of elemental concentrations for provenance, redox conditions, and metamorphic studies of shales and limestones near Pueblo, CO, USA. *Chemical Geology* 191: 305–327.
- Cullers, R.L., T. Barrett, R. Carlson, and B. Robinson. 1987. Rare-earth element and mineralogical changes in Holocene soil and stream sediment: A case study in the Wet Mountains, Colorado, USA. *Chemical Geology* 63: 275–297.
- Cullers, R.L., and V.N. Podkovyrov. 2000. Geochemistry of the Mesoproterozoic Lakhanda shales in southeastern Yakutia, Russia: Implications for mineralogical and provenance control, and recycling. *Precambrian Research* 104: 77–93. [https://doi.org/10.1016/S0301-9268\(00\)00090-5](https://doi.org/10.1016/S0301-9268(00)00090-5).
- Deng, S.H., Y.Z. Lu, R. Fan, X. Li, L.H. Fang, and L. Liu. 2012. Cretaceous floras and biostratigraphy of China. *Journal of Stratigraphy* 36 (2): 241–265.
- Driese, S.G. 2004. Pedogenic translocation of Fe in modern and ancient vertisols and implications for interpretations of the Hekpoort paleosol (2.25 Ga). *Journal of Geology* 112: 543–560.
- Egli, M., A. Mirabella, and G. Sartori. 2008. The role of climate and vegetation in weathering and clay mineral formation in late Quaternary soils of the Swiss and Italian Alps. *Geomorphology* 102: 307–324. <https://doi.org/10.1016/j.geomorph.2008.04.001>.
- Erba, E. 2004. Calcareous nannofossils and Mesozoic oceanic anoxic events. *Marine Micropaleontology* 52: 85–106. <https://doi.org/10.1016/j.marmicro.2004.04.007>.
- Fedo, C.M., H.W. Nesbitt, and G.M. Young. 1995. Unraveling the effects of potassium metasomatism in sedimentary rocks and paleosols, with implications for paleoweathering conditions and provenance. *Geology* 23 (10): 921–924.
- Frakes, L.A. 1999. Estimating the global thermal state from Cretaceous sea surface and continental temperature data. In *Evolution of the Cretaceous Ocean-Climate System*, ed. E. Barrera and C.C. Johnson, 49–57. Boulder, Colorado: Geological Society of America Special Paper 332.
- Gao, Y., C.S. Wang, Y.J. Huang, and B. Hu. 2017. Progress in the study of paleoclimate change in continental scientific drilling projects. *Earth Science Frontiers* 24 (1): 229–241 (in Chinese with English abstract).
- Garver, J.I., P.R. Royce, and T.A. Smick. 1996. Chromium and nickel in shale of the Taconic foreland: A case study for the provenance of fine-grained sediments with an ultramafic source. *Journal of Sedimentary Research* 66 (1): 100–106.
- Garzanti, E., M. Padoan, M. Setti, Y. Najman, L. Peruta, and I.M. Villa. 2013. Weathering geochemistry and Sr-Nd fingerprints of equatorial upper Nile and Congo muds. *Geochemistry, Geophysics, Geosystems* 14 (2): 292–316.
- Girty, G.H., D.L. Ridge, C. Knaack, D. Johnson, and R.K. Al-Riyami. 1996. Provenance and depositional setting of Paleozoic chert and argillite, Sierra Nevada, California. *Journal of Sedimentary Research* 66 (1): 107–118.
- Hayashi, K.I., H. Fujisawa, H.D. Holland, and H. Ohmoto. 1997. Geochemistry of approximately 1.9 Ga sedimentary rocks from northeastern Labrador, Canada. *Geochimica et Cosmochimica Acta* 61 (19): 4115–4137.
- Hernández-Hinojosa, V., P.C. Montiel-García, J.S. Armstrong-Altrin, R. Nagarajan, and J.J. Kasper-Zubillaga. 2018. Textural and geochemical characteristics of beach sands along the western Gulf of Mexico, Mexico. *Carpathian Journal of Earth and Environmental Sciences* 13 (1): 161–174.

- Hu, X.M., L. Jansa, and M. Sarti. 2006. Mid-cretaceous oceanic red beds in the Umbria-Marche Basin, Central Italy: Constraints on paleoceanography and paleoclimate. *Palaeogeography, Palaeoclimatology, Palaeoecology* 233: 163–186. <https://doi.org/10.1016/j.palaeo.2005.10.003>.
- Huang, Q.H., H.C. Wu, X.Q. Wan, H.Y. He, and C.L. Deng. 2011. New progress of integrated chronostratigraphy of the Cretaceous in Songliao Basin. *Journal of Stratigraphy* 35 (3): 250–257 (in Chinese with English abstract).
- Huber, B.T., R.D. Norris, and K.G. MacLeod. 2002. Deep-sea paleotemperature record of extreme warmth during the Cretaceous. *Geology* 30 (2): 123–126. [https://doi.org/10.1130/0091-7613\(2002\)030<0123:DSPROE>2.0.CO;2](https://doi.org/10.1130/0091-7613(2002)030<0123:DSPROE>2.0.CO;2).
- Jenkyns, H.C. 1999. Mesozoic anoxic events and palaeoclimate. *Zentralblatt für Geologie und Paläontologie* 1997 (7–9): 943–949.
- Jenkyns, H.C. 2003. Evidence for rapid climate change in the Mesozoic-Palaeogene greenhouse world. *Philosophical Transactions of the Royal Society A* 361: 1885–1916. <https://doi.org/10.1098/rsta.2003.1240>.
- Ji, Q. 2004. *Mesozoic Jehol biota in western Liaoning Province, China*. Beijing: Geological Publishing House (in Chinese).
- Kamp, P.C.V.D., and B.E. Leake. 1985. Petrography and geochemistry of feldspathic and mafic sediments of the northeastern Pacific margin. *Transactions of the Royal Society of Edinburgh: Earth Sciences* 76: 411–449.
- Kang, Y.S., R. Quan, Q. Zhao, and H.Y. Wang. 2019. Exploration and development potential of the low-maturity continental shale gas in the Fuxin Basin. *Natural Gas Industry* 39 (3): 21–31.
- Keller, G. 2008. Cretaceous climate, volcanism, impacts, and biotic effects. *Cretaceous Research* 29: 754–771. <https://doi.org/10.1016/j.cretres.2008.05.030>.
- Kerr, A.C. 1998. Oceanic plateau formation: A cause of mass extinction and black shale deposition around the Cenomanian-Turonian boundary? *Journal of the Geological Society* 155: 619–626.
- Larson, R.L. 1991. Geological consequences of superplumes. *Geology* 19 (10): 963–966. [https://doi.org/10.1130/0091-7613\(1991\)019<0963:GCOS>2.3.CO;2](https://doi.org/10.1130/0091-7613(1991)019<0963:GCOS>2.3.CO;2).
- Larson, R.L., and E. Erba. 1999. Onset of the Mid-Cretaceous greenhouse in the Barremian-Aptian: Igneous events and the biological, sedimentary, and geochemical responses. *Paleoceanography* 14 (6): 663–678.
- Leckie, R.M., T.J. Bralower, and R. Cashman. 2002. Oceanic anoxic events and plankton evolution: Biotic response to tectonic forcing during the Mid-Cretaceous. *Paleoceanography* 17 (3): 11–13. <https://doi.org/10.1029/2001PA000623>.
- Li, C., and S.Y. Yang. 2010. Is chemical index of alteration (CIA) a reliable proxy for chemical weathering in global drainage basins? *American Journal of Science* 310 (2): 111–127. <https://doi.org/10.2475/02.2010.03>.
- Li, J.H., and H.F. Jiang. 2013. *Global Palaeoplate Reconstruction, Lithofacies Palaeogeography and Palaeoenvironmental Atlas*. Beijing: Geological Publishing House (in Chinese).
- Liu, Z.G., and J.P. Chen. 1995. Coal-controlling structures in the Fuxin Basin. *Geological Review* 41 (6): 499–502 (in Chinese with English abstract).
- McLennan, S.M. 1993. Weathering and global denudation. *Journal of Geology* 101: 295–303.
- National Commission on Stratigraphy of China. 2014. *Stratigraphic Chart of China 2014*. Beijing: Geological Publishing House (in Chinese).
- Nesbitt, H.W., and G.M. Young. 1982. Early Proterozoic climates and plate motions inferred from major element chemistry of lutites. *Nature* 299: 715–717.
- Okada, H. 1999. Plume-related sedimentary basins in East Asia during the cretaceous. *Palaeogeography, Palaeoclimatology, Palaeoecology* 150: 1–11.
- Paikaray, S., S. Banerjee, and S. Mukherji. 2008. Geochemistry of shales from the Paleoproterozoic to Neoproterozoic Vindhyan Supergroup: Implications on provenance, tectonics and paleoweathering. *Journal of Asian Earth Sciences* 32: 34–48. <https://doi.org/10.1016/j.jseas.2007.10.002>.
- Panahi, A., G.M. Young, and R.H. Rainbird. 2000. Behavior of major and trace elements (including REE) during Paleoproterozoic pedogenesis and diagenetic alteration of an Archean granite near Ville Marie, Québec, Canada. *Geochimica et Cosmochimica Acta* 64 (13): 2199–2220.
- Parker, A. 1970. An index of weathering for silicate rocks. *Geological Magazine* 107 (6): 501–504.
- Price, G.D. 1999. The evidence and implications of polar ice during the Mesozoic. *Earth-Science Reviews* 48: 183–210. [https://doi.org/10.1016/S0012-8252\(99\)00048-3](https://doi.org/10.1016/S0012-8252(99)00048-3).
- Pucéat, E., C. Lécuyer, S.M.F. Sheppard, G. Dromart, S. Reboulet, and P. Grandjean. 2003. Thermal evolution of Cretaceous Tethyan marine waters inferred from oxygen isotope composition of fish tooth enamels. *Paleoceanography* 18 (2): 1–12. <https://doi.org/10.1029/2002PA000823>.
- Qiu, X.W., C.Y. Liu, F.F. Wang, Y. Deng, and G.Z. Mao. 2015. Trace and rare earth element geochemistry of the upper Triassic mudstones in the southern Ordos Basin, Central China. *Geological Journal* 50: 399–413. <https://doi.org/10.1002/gj.2542>.
- Ramos-Vázquez, M.A., and J.S. Armstrong-Altrin. 2019. Sediment chemistry and detrital zircon record in the Bosque and Paseo del mar coastal areas from the southwestern Gulf of Mexico. *Marine and Petroleum Geology* 110: 650–675. <https://doi.org/10.1016/j.marpetgeo.2019.07.032>.
- Retallack, G.J. 2009. Refining a pedogenic-carbonate CO₂ paleobarometer to quantify a middle Miocene greenhouse spike. *Palaeogeography, Palaeoclimatology, Palaeoecology* 281: 57–65. <https://doi.org/10.1016/j.palaeo.2009.07.011>.
- Saha, S., S. Banerjee, S.D. Burley, A. Ghosh, and P.K. Saraswati. 2010. The influence of flood basaltic source terrains on the efficiency of tectonic setting discrimination diagrams: An example from the Gulf of Khambhat, western India. *Sedimentary Geology* 228: 1–13. <https://doi.org/10.1016/j.sedgeo.2010.03.009>.
- Saha, S., S. Burley, and S. Banerjee. 2018. Mixing processes in modern estuarine sediments from the Gulf of Khambhat, western India. *Marine and Petroleum Geology* 91: 599–621. <https://doi.org/10.1016/j.marpetgeo.2017.12.010>.
- Shao, L.Y., Z.P. He, W.L. Luo, Y.F. Liu, and P.F. Zhang. 2005. Characteristics of the palaeosoils in the coal measures of Carboniferous and Permian in southern Hebei, China. *Journal of Xi'an Shiyou University (Natural Science Edition)* 20 (3): 6–10 (in Chinese with English abstract).
- Skiba, M. 2007. Clay mineral formation during podzolization in an alpine environment of the Tatra Mountains, Poland. *Clays and Clay Minerals* 55 (6): 618–634. <https://doi.org/10.1346/CCMN.2007.0550609>.
- Sun, W.L. 2006. *China Coalbed Methane Basins Atlas*. Beijing: Geological Publishing House (in Chinese).
- Taylor, S.R., and S.M. McLennan. 1985. *The continental crust: Its composition and evolution: An examination of the geochemical record preserved in sedimentary rocks*. Oxford: Blackwell Scientific Publications.
- Wan, X.Q., G. Li, Q.H. Huang, D.P. Xi, and P.J. Chen. 2013. Division and correlation of terrestrial Cretaceous stages in China. *Journal of Stratigraphy* 37 (4): 457–471 (in Chinese with English abstract).
- Wan, X.Q., H.C. Wu, D.P. Xi, M.Y. Liu, and Z.H. Qin. 2017. Terrestrial biota and climate during Cretaceous greenhouse in NE China. *Earth Science Frontiers* 24 (1): 18–31 (in Chinese with English abstract).
- Wang, C.S. 2006. Coupling of the Earth surface system: Inferring from the Cretaceous major geological events. *Advances in Earth Science* 21 (7): 838–842 (in Chinese with English abstract).
- Wang, C.S., K. Cao, and Y.J. Huang. 2009. Sedimentary record and Cretaceous Earth surface system changes. *Earth Science Frontiers* 16 (5): 1–14 (in Chinese with English abstract).
- Wang, C.S., X.M. Hu, M. Sarti, R.W. Scott, and X.H. Li. 2005. Upper Cretaceous oceanic red beds in southern Tibet: A major change from anoxic to oxic, deep-sea environments. *Cretaceous Research* 26: 21–32. <https://doi.org/10.1016/j.cretres.2004.11.010>.
- Wang, G.H., C.H. Zhang, G.S. Wang, and Z.W. Wu. 2001. Tectonic framework of western Liaoning Province and its evolution during Mesozoic. *Geoscience* 15 (1): 1–7 (in Chinese with English abstract).
- Wang, W.F., S.K. Lu, Y.X. Guo, and Y.P. Sun. 1998. Tectonic geometry and type of traps in Fuxin Basin. *Journal of the University of Petroleum, China (Edition of Natural Science)* 22 (3): 29–33 (in Chinese with English abstract).
- Wang, X.X., R.C. Zheng, G.Q. Yan, C.Y. Wang, and H.R. Chen. 2014a. The mudstone sedimentary environment and provenance analysis based on the geochemical evidence of rare earth elements: Take Chang 9 oil-bearing layer in Longdong area of Ordos Basin as an example.

- Natural Gas Geoscience* 25 (9): 1387–1394 (in Chinese with English abstract).
- Wang, Y.D., C.M. Huang, B.N. Sun, C. Quan, J.Y. Wu, and Z.C. Lin. 2014b. Paleo-CO₂ variation trends and the Cretaceous greenhouse climate. *Earth-Science Reviews* 129: 136–147. <https://doi.org/10.1016/j.earscirev.2013.11.001>.
- Weissert, H. 1989. C-isotope stratigraphy, a monitor of paleoenvironmental change: A case study from the Early Cretaceous. *Surveys in Geophysics* 10: 1–61.
- Weissert, H., and A. Lini. 1991. Ice age interludes during the time of Cretaceous greenhouse climate. In *Controversies in modern geology*, ed. D.W. Mueller, J.A. McKenzie, and H. Weissert, 173–191. London: Academic Press.
- Wilson, M.J. 2004. Weathering of the primary rock-forming minerals: Processes, products and rates. *Clay Minerals* 39: 233–266. <https://doi.org/10.1180/0009855043930133>.
- Wu, H.C., S.H. Zhang, L.A. Hinnov, G.Q. Jiang, T.S. Yang, H.Y. Li, X.Q. Wan, and C.S. Wang. 2014. Cyclostratigraphy and orbital tuning of the terrestrial upper Santonian-lower Danian in Songliao Basin, northeastern China. *Earth and Planetary Science Letters* 407: 82–95. <https://doi.org/10.1016/j.epsl.2014.09.038>.
- Xi, D.P., X.Q. Wan, G.B. Li, and G. Li. 2019. Cretaceous integrative stratigraphy and timescale of China. *Science China Earth Sciences* 62 (1): 256–286. <https://doi.org/10.1007/s11430-017-9262-y>.
- Xu, X.T., and L.Y. Shao. 2018. Limiting factors in utilization of chemical index of alteration of mudstones to quantify the degree of weathering in provenance. *Journal of Palaeogeography (Chinese Edition)* 20 (3): 515–522 (in Chinese with English abstract).
- Xu, X.T., L.Y. Shao, Y.F. Fu, D.D. Wang, H.A. Cai, J.Y. Qin, H.H. Hou, and J. Zhao. 2020. Sequence palaeogeography, lacustrine basin evolution, and coal accumulation in the Lower Cretaceous Fuxin continental faulted basin, China. *Geological Journal* 55 (2): 1195–1215. <https://doi.org/10.1002/gj.3483>.
- Yang, J.H., P.A. Cawood, Y.S. Du, B. Feng, and J.X. Yan. 2014. Global continental weathering trends across the early Permian glacial to postglacial transition: Correlating high- and low-paleolatitude sedimentary records. *Geology* 42 (10): 835–838. <https://doi.org/10.1130/G35892.1>.
- Yang, J.H., and Y.S. Du. 2017. Weathering geochemistry and palaeoclimate implication of the early Permian mudstones from eastern Henan Province, North China. *Journal of Palaeogeography* 6 (4): 370–380. <https://doi.org/10.1016/j.jop.2017.08.003>.
- Yevnes, M.A., N.A. Lago, L. Fariás, and C.A. Vargas. 2019. Greenhouse gases, nutrients and the carbonate system in the Reloncaví Fjord (northern Chilean Patagonia): Implications on aquaculture of the mussel, *Mytilus chilensis*, during an episodic volcanic eruption. *Science of the Total Environment* 669: 49–61. <https://doi.org/10.1016/j.scitotenv.2019.03.037>.
- Zhang, G.R. 2006. *Mesozoic intraplate orogenesis in western Liaoning Province*. Beijing: China University of Geosciences (in Chinese with English abstract).
- Zhang, Y.Y., L.B. Cai, W. Jin, T. Liu, P.X. Zheng, and J. Li. 2016. The petrogenesis and evolutionary process of Neoproterozoic Diaoyutai granite in western Liaoning Province: Evidences from petrofabric. *Acta Petrologica Sinica* 32 (9): 2867–2880 (in Chinese with English abstract).
- Zhu, Z.M., J.F. Yan, B. Shen, and J.Y. Zhou. 2007. Co-existing formation of multi-energy resources in the Fuxin Basin analysis from tectonic-thermal events. *Advances in Earth Science* 22 (5): 468–479 (in Chinese with English abstract).

Publisher's Note

Springer Nature remains neutral with regard to jurisdictional claims in published maps and institutional affiliations.

Submit your manuscript to a SpringerOpen[®] journal and benefit from:

- Convenient online submission
- Rigorous peer review
- Open access: articles freely available online
- High visibility within the field
- Retaining the copyright to your article

Submit your next manuscript at ► [springeropen.com](https://www.springeropen.com)