



Effect of Shallow Slip Amplification Uncertainty on Probabilistic Tsunami Hazard Analysis in Subduction Zones: Use of Long-Term Balanced Stochastic Slip Models

A. SCALA,^{1,2} S. LORITO,² F. ROMANO,² S. MURPHY,³ J. SELVA,⁴ R. BASILI,² A. BABEYKO,⁵ A. HERRERO,² A. HOECHNER,⁵ F. LØVHOLT,⁶ F. E. MAESANO,² P. PERFETTI,⁴ M. M. TIBERTI,² R. TONINI,² M. VOLPE,² G. DAVIES,⁷ G. FESTA,¹ W. POWER,⁸ A. PIATANESI,² and A. CIRELLA²

Abstract—The complexity of coseismic slip distributions influences the tsunami hazard posed by local and, to a certain extent, distant tsunami sources. Large slip concentrated in shallow patches was observed in recent tsunamigenic earthquakes, possibly due to dynamic amplification near the free surface, variable frictional conditions or other factors. We propose a method for incorporating enhanced shallow slip for subduction earthquakes while preventing systematic slip excess at shallow depths over one or more seismic cycles. The method uses the classic k^{-2} stochastic slip distributions, augmented by shallow slip amplification. It is necessary for deep events with lower slip to occur more often than shallow ones with amplified slip to balance the long-term cumulative slip. We evaluate the impact of this approach on tsunami hazard in the central and eastern Mediterranean Sea adopting a realistic 3D geometry for three subduction zones, by using it to model $\sim 150,000$ earthquakes with M_w from 6.0 to 9.0. We combine earthquake rates, depth-dependent slip distributions, tsunami modeling, and epistemic uncertainty through an ensemble modeling technique. We found that the mean hazard curves obtained with our method show enhanced probabilities for larger inundation heights as compared to the curves derived from depth-independent slip distributions. Our approach is completely general and can be applied to any subduction zone in the world.

Key words: Tsunamis, seismic-probabilistic tsunami hazard assessment, tsunami source models, stochastic seismic slip distributions.

1. Introduction

A relatively high rate of great seismic events ($M_w \geq 8.0$) characterized the last two decades. Most of these events occurred along subduction zones and triggered some of the strongest ever-recorded tsunamis (e.g., 2004 M_w 9.2 Sumatra–Andaman, 2010 M_w 8.8 Maule, and 2011 M_w 9.1 Tohoku). Some of these great earthquakes revealed unprecedented rupture features, for example the Tohoku earthquake that produced an unexpectedly large amount of slip (~ 50 m) just at the trench, resulting in a huge tsunami (e.g., Romano et al. 2014; Lorito et al. 2016; Lay 2018). Before this earthquake, it was commonly stated that the accretionary sedimentary wedges could not accumulate sufficient strain to produce a large co-seismic slip (e.g., Hyndman et al. 1997; Moore and Saffer 2001). Even smaller events, such as the 2010 M_w 7.8 Mentawai earthquake (classified as a tsunami earthquake, e.g., Yue et al. 2014), produced larger than expected tsunami waves due to relatively large slip at shallow depths. It was also observed that shallow subduction earthquakes tend to have a longer normalized source duration than deeper ones, which was explained by inverse dependence of the rigidity and/or stress drop with depth (Bilek and Lay 1999; Geist and Bilek 2001). Moreover, the depth-dependent frequency radiation recorded during great earthquakes (Wang and Mori 2011; Lay et al. 2012), featuring generally higher-frequency seismic radiation zones at depth, has been interpreted in the framework of geometrical and structural segmentation of the slab and variation of thermal properties with depth (Satriano et al. 2014). Some numerically simulated dynamic effects may indeed favor the up-

Electronic supplementary material The online version of this article (<https://doi.org/10.1007/s00024-019-02260-x>) contains supplementary material, which is available to authorized users.

¹ Department of Physics “Ettore Pancini”, University of Naples, Naples, Italy. E-mail: scala@fisica.unina.it; antonio.scala@ingv.it

² Istituto Nazionale di Geofisica e Vulcanologia, Sezione di Roma 1, Rome, Italy.

³ Ifremer, Plouzané, France.

⁴ Istituto Nazionale di Geofisica e Vulcanologia, Sezione di Bologna, Bologna, Italy.

⁵ GFZ, Potsdam, Germany.

⁶ NGI, Oslo, Norway.

⁷ Geoscience Australia, Canberra, Australia.

⁸ GNS Science, Lower Hutt, New Zealand.

dip propagation of subduction rupture. These include the bi-material effect (Rubin and Ampuero 2007; Ma and Beroza 2008; Scala et al. 2017), the interaction with radiation reflected and/or converted from the free surface (Nielsen 1998; Lotto et al. 2017; Scala et al. 2019), and the variability of frictional properties (Kozdon and Dunham 2013; Murphy et al. 2018).

All the above observations and their interpretation are relevant for tsunami hazard, as it is well-established that tsunamis and tsunami hazard are sensitive to slip complexity, including shallow slip features, not only in the near-field of the source, but also at regional distances (e.g., Geist 2002; McCloskey et al. 2007; González et al. 2009; Li et al. 2016).

Several strategies have been proposed to produce heterogeneous slip distributions for tsunami hazard calculations. The stochastic slip distributions are either computed from pre-defined statistical distributions (LeVeque et al. 2016; Sepúlveda et al. 2017) or constrained by models of real earthquakes (Mori et al. 2017). These strategies allow for the definition of large slip distribution ensembles to explore the slip distribution uncertainty. This variability in the source models can be propagated in the computation of tsunami (inundation) scenarios and hazard assessment.

Nevertheless, to our knowledge, a shallow slip amplification has not yet been included in tsunami hazard models (Grezio et al. 2017). Some techniques which use sets of data-driven slip distributions (Davies and Griffin 2018; Goda et al. 2014) or pseudo-dynamic kinematic seismic source descriptions (Song and Somerville 2010; Song et al. 2013) may intrinsically address the issue since they are based on seismic or tsunami observations. Moreover, dynamically modified k^{-2} kinematic source models have been proposed to account for shallow slip amplification and provided enhanced tsunamigenic potential (Murphy et al. 2016). While accounting for enhanced shallow slip, these approaches do not deal with the frequency of occurrence of shallow slip amplification. The enhanced shallow slip should be imposed in a manner such that the time-integrated rate of slip across the whole fault plane reflects the convergence rate and plate coupling over long time periods, that is, among other things, avoiding an unrealistic and unjustified slip accumulation at shallow depths (e.g., Wang and Dixon 2004).

In this work, we propose a methodology to produce sets of kinematic k^{-2} slip distributions considering slip amplification at shallow depths on the plate interface, while re-balancing the spatial distribution of the consequent long-term slip. For individual earthquakes, we consider systematically enhanced shallow slip. That is, the slip amplitude increases as the rigidity decreases, reaching its maximum at relatively shallow depths, apart from a less strongly coupled zone at the very shallowest part. However, since the long-term spatial slip rate needs to be compatible with the convergence rate and coupling along the interface (e.g., Nalbant et al. 2013), the enhanced slip for a single shallow earthquake should be balanced by an overall lower rate of occurrence for such events. In this way, the earthquakes simulated by this model produce reasonably uniform (hence realistic) long-term slip accumulation, enabling their incorporation in long-term hazard models.

We address the importance of such a model through a long-term seismic—probabilistic tsunami hazard assessment (S-PTHA; hazard for tsunamis generated by earthquakes only). The sensitivity of S-PTHA is demonstrated by using either our method featuring enhanced shallow slip, or the usual depth-independent heterogeneous slip distributions. To perform this sensitivity analysis we use the Mediterranean basin as a case study, this basin contains several subduction structures and has hosted several destructive tsunamis in the past (e.g., the 365 Crete tsunami). We employ a simplified version of the TSUMAPS-NEAM (<http://www.tsumaps-neam.eu/>) seismicity model. The model is simplified since we consider only subduction events while neglecting all crustal seismicity. In this area, the hazard due to crustal seismicity represents an important component of the total S-PTHA (Sørensen et al. 2012; Selva et al. 2016). One should eventually consider also hazard from non-seismic sources (e.g., Tonini et al. 2011; Grezio et al. 2012, 2015; Urlaub et al. 2018; Paris et al. 2019). As a further simplification in comparison to the TSUMAPS-NEAM model, we consider a narrower range of alternative models to describe the epistemic uncertainty, both as far as the seismicity rates and the inundation models are concerned.

In the following sections, we first introduce our assumptions on the depth-dependence of rigidity and seismic coupling. Then, we synthetically describe the subduction zones in the Mediterranean, which are needed to illustrate the procedure for constructing the seismic slip distributions. Finally, we conclude by explaining the different steps involved in the long-term S-PTHA case study in the Mediterranean Sea.

2. Method

2.1. Seismic Moment and Rigidity/Coupling

Variation with Depth

The seismic moment of an earthquake can be defined as:

$$M_0 = \int_A \mu \cdot \delta \cdot dS = \langle \mu \cdot \delta \rangle \cdot A, \quad (1)$$

where δ is the slip amplitude and μ the local rigidity over fault area A , whereas $\langle \mu \cdot \delta \rangle$ is the spatial average of slip times rigidity.

When the continuous quantity defined by Eq. (1) is modeled on a discretized mesh, the seismic moment can be approximated by the following summation of discrete quantities:

$$M_0 = \sum_{n=1}^N \mu_n \delta_n A_n, \quad (2)$$

where N is the number of mesh cells, whereas μ_n and A_n represent the local rigidity and the surface size of the n th cell, respectively.

For a given value of the seismic moment M_0 , the rigidity variations at different locations on the fault constrain the slip value at the same location; for example, the slip is larger in (shallow) low-rigidity areas. We here assume that the rigidity only varies with depth, while we neglect lateral (i.e., along-strike) variations.

Assuming constant stress drop, to fit the observation that the normalized source duration generally decreases with depth (Bilek and Lay 1999), the rigidity has been proposed to exponentially vary with depth as well, as shown in Fig. 1a, according to:

$$\mu(z) = 10^{a+bz}, \quad (3)$$

where μ is rigidity in GPa , z is depth in km , and from the regression, the parameters a and b take the values of 0.5631 and 0.0437, respectively. A rigidity-depth dependence is also featured by the preliminary reference earth model (PREM, Dziewonski and Anderson 1981; Fig. 1a). However, as pointed out by Geist and Bilek (2001), to match observed tsunami amplitudes generated by several tsunami earthquakes (M_w 7.7, 1992 Nicaragua earthquake, Satake 1995; M_w 7.5, 1996 Peru earthquake, Heinrich et al. 1998; Tanioka and Satake 1996), the average rigidity of the shallow portion of the subduction zone needs to be somewhat higher than in the Bilek and Lay (1999) end-member case, yet still lower than implied by the PREM. In our analysis, we adopt an intermediate rigidity profile (Fig. 1a), computed as the average between the two aforementioned profiles.

To evaluate the long-term slip accumulation (in multiple seismic cycles), slip on the subduction faults should also account for the aseismic contribution produced by creeping and other non-tsunamigenic, non-radiative episodic slip events (e.g., Scholz 1998), including the contribution of after slip and viscoelastic relaxation phenomena (e.g., Sun and Wang 2015). The balance between the seismic and aseismic slip can be described as controlled by the seismic coupling factor, that is the seismic fraction of total plate convergence in a given time period, from now on called ‘‘coupling’’ for simplicity. The total long-term slip D_T released at the position x can be modelled as:

$$D_T = \delta_T(x) + d_T(x) = k(x) \cdot D_T + [1 - k(x)] \cdot D_T, \quad (4)$$

where $\delta_T(x)$ and $d_T(x)$ are the seismic and aseismic contributions to the slip at x , respectively, and $k(x) = \tilde{K} \cdot K(x)$ is the coupling factor, modelled as the product between \tilde{K} , the average absolute coupling value of the specific subduction zone, and $K(x)$, the relative coupling variation at position x . Whatever arbitrary choice we make about the coupling variation, it affects both the slip distribution of single events and the expected cumulative long-term slip. In this work, as a first approximation, a variation of the relative coupling with depth has been imposed: $K(z)$ is assumed to be a constant function along most of the

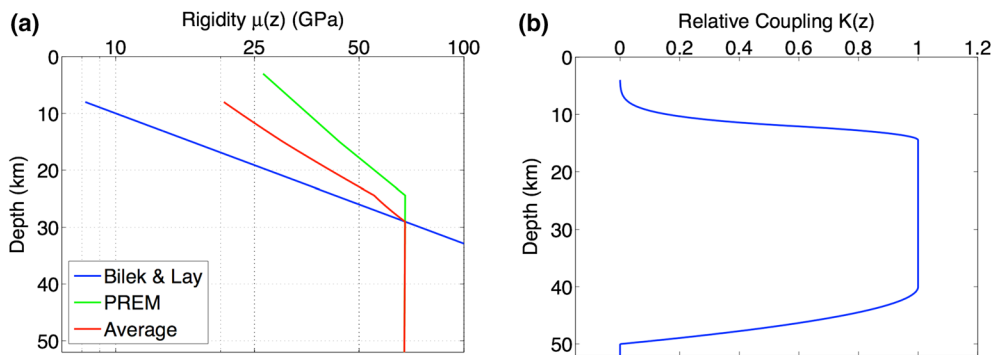


Figure 1

a Rigidity profiles as a function of the depth computed from the end-member case of Bilek and Lay (1999) (blue curve) and interpolating the PREM (Dziewonski and Anderson 1981) values (green line). The average between the two profiles is shown in red. **b** A priori hypothesis of relative coupling as a function of depth. We impose a homogeneous coupling decreasing toward the upper and deeper limits of the seismogenic depth interval. Symbols in the diagram titles for rigidity and relative coupling are the same as in Eq. (3) and in the description of the Eq. (4), respectively

subduction interface, while it monotonically decreases towards the shallowest and deepest boundaries of the seismogenic zone. The decrease at depth is modelled starting from 40 km depth (Tichelaar and Ruff 1993), possibly corresponding to the 350° isotherm, which may be among the factors controlling seismicity cut-off at depth (e.g., Hyndman 2013). Note, however, that the exact down-dip seismogenic limit is relatively unimportant as far as tsunamigenesis is concerned. At shallow depths, the decrease of the coupling occurs where the average dip angle decreases below 10° , generating an almost flat sedimentary wedge (Polonia et al. 2011; Gallais et al. 2012; Maesano et al. 2017), which makes it difficult to define an exact trench location in the specific tectonic context used here as a case study, as discussed in the next section.

This depth-dependent coupling function produces a maximum coupling up to the shallowest seismogenic portion of the subduction, possibly allowing for shallow slip amplification. Figure 1b illustrates the function $K(z)$ used in this work, with which we mimic a gradual coupling decrease toward the boundaries of the seismogenic zone.

2.2. Subduction in the Mediterranean

The case study focuses on three subduction zones within the Mediterranean basin, namely the Calabrian Arc, the Hellenic Arc, and the Cyprus Arc (Fig. 2).

The Calabrian Arc seismogenic and tsunamigenic potential is much debated; some authors suggested that the Calabrian Arc hosted the tsunamigenic earthquakes of 1693, M7.3, or of 1905, M7.0. For the source of the tsunami associated to the 1693 earthquake, however, there is no consensus on whether it was caused by the subduction interface, by a crustal fault, or by a landslide (Piatanesi and Tinti 1998; Tinti et al. 2001; Gutscher et al. 2006; Gerardi et al. 2008; Argnani et al. 2012). The Hellenic Arc subduction is considered by some authors as the locus of at least two M8 + earthquakes in 365 and 1303, which generated destructive tsunamis (Guidoboni et al. 1994; Papazachos and Papazachou 1997; Tinti et al. 2005; Lorito et al. 2008; Papadimitriou and Karakostas 2008; Ganas and Parsons 2009; De Martini et al. 2010; Maramai et al. 2014). Some others claim that these events were generated on shallower crustal faults embedded in the accretionary wedge (Shaw et al. 2008; Stiros 2010; England et al. 2015).

Available estimates of the convergence rates in these subduction zones are very variable, and we recall just some of them here. The Calabrian Arc convergence rate is estimated at 5 mm/year by Devoti et al. (2008) and recently at 1.5–1.6 mm/year if creeping, or 2.7–3.0 if temporarily locked by Carafa et al. (2018). The Hellenic Arc convergence rate is estimated at 23 mm/year in the Ionian Islands (Hollenstein et al. 2008), 35 mm/year in the western

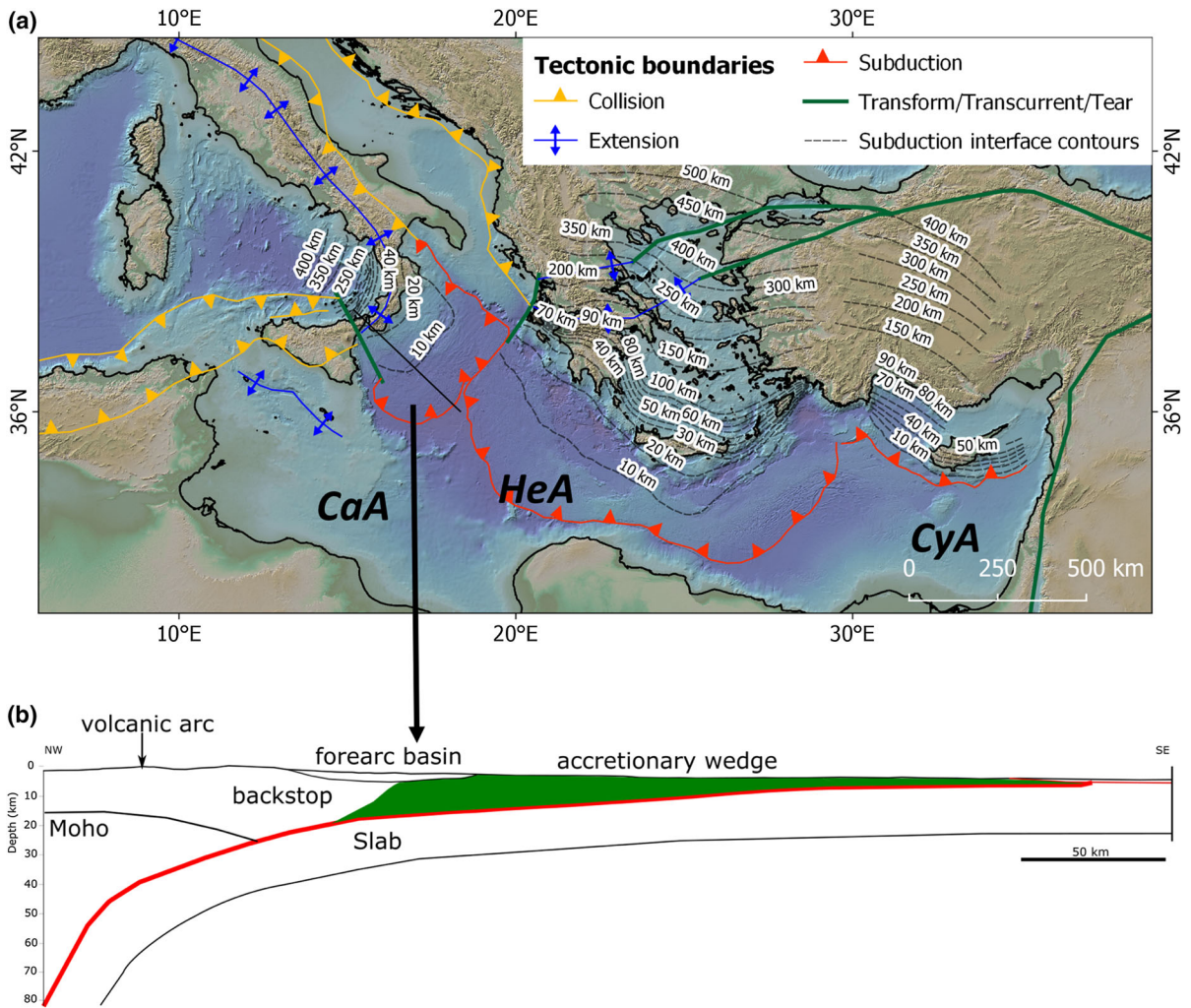


Figure 2

a Tectonic sketch of the Eastern Mediterranean region (CaA, Calabrian Arc; HeA, Hellenic Arc; CyA, Cyprus Arc). **b** Schematic profile across the Calabrian subduction zone. Note the wide and shallow subduction interface covered by the accretionary prism

part (Reilinger et al. 2006; Noquet 2012), and 10 mm/year in the eastern part (Reilinger et al. 2006). The Cyprus Arc convergence rate is estimated at 18 mm/year (Reilinger et al. 2006), 8–9 mm/year (Wdowinski et al. 2006), 12 mm/year (Howell et al. 2017) in the western part, and at 7–8 mm/year (Wdowinski et al. 2006), 5–8 mm/year (Noquet 2012) in the eastern part.

The values of the coupling coefficients in these three subduction zones are also highly debated. In the Calabrian Arc two competing interpretations—ranging from partially-locked to unlocked or inactive—

were recently proposed (Carafa et al. 2018; Nijholt et al. 2018). In the Hellenic Arc interpretations range from full locking (Ganas and Parsons 2009) to low coupling (Shaw and Jackson 2010; Vernant et al. 2014), but also the presence of important along-strike coupling variations was proposed (Laigle et al. 2004).

Rates used afterward for S-PTHA are inherited from the TSUMAPS-NEAM Project. We refer to the Project documentation for further details. We just list for completeness here that, depending on the alternative TSUMAPS-NEAM modelling strategy, either the SHEEC-EMEC seismic catalog (Stucchi et al.

2013; Grünthal and Wahlström 2012), whose time span ranges from 1000 to 2006, was used; or, the b-values, convergence and coupling data from GEM Faulted Earth (Christophersen et al. 2015) and from Davies et al. (2017).

The geometry of the three slabs was initially derived from the European Database of Seismogenic Faults (EDSF; Basili et al. 2013) and then modified according to newer data where available. In particular, the Calabrian Arc is replaced by the more recent model by Maesano et al. (2017) which is derived from the interpretation of a dense network of seismic reflection profiles integrated with the analysis of the seismicity distribution with depth. The Hellenic Arc is the same as that in the EDSF, but we verified its consistency with recent works by Sodoudi et al. (2015) and Sachpazi et al. (2016). The Cyprus Arc was slightly modified in consideration of the results of recent works (Bakirci et al. 2012; Salaün et al. 2012; Howell et al. 2017; Sellier et al. 2013a, b) that are based on seismic reflection profiles and tomographic and seismological data and constrain the geometry of the western part of the slab.

According to the classification by Clift and Vannucchi (2004), these three subduction systems are of the accretionary type (e.g., Barbados, Nankai, or Makran), as opposed to erosional type (e.g., Mexico, Tonga, or Kermadec). Due to their relatively slow convergence rate, old age, and presence of a thick sedimentary cover onto the lower plate, they show huge accretionary wedges and no clear evidence of a trench, as it is filled with the accreted deformed sediments. In this configuration, there is a large portion of the shallow part of the lower plate in contact with highly-heterogeneous rocks along a low-angle interface, where one can expect large earthquake ruptures to propagate (e.g., Lallemand et al. 1994; Gutscher and Westbrook 2009). Such configuration is sometimes also considered to favor the occurrence of very shallow slip (e.g., Bilek and Lay 2018, and references therein). Due to the large extension of the accretionary prisms and the gentle dip of the interface (see Fig. 2b) our depth-dependent coupling profile determines that high-amplitude coseismic slip is released just below the sea bottom.

Starting from these subduction geometries, we built 3D triangular meshes with ~ 15 -km element

size for all of them, using the Cubit mesh generator (<http://cubit.sandia.gov>). These geometries and their modeling should be compared to the Slab2 model that was very recently published by Hayes et al. (2018). The three meshes are illustrated in Fig. ESM1 in the Electronic Supplementary Material highlighting the depth variation over the modeled interfaces.

2.3. Rupture Areas and Stochastic Slip Distributions

We model tsunamigenic earthquakes in a range from $M_w = 6.0$ to $M_w = 9.0$ subdivided into 18 bins. Some previous sensitivity analysis showed that the lower limit of this range might still have a significant effect on the tsunami hazard depending on some particular local conditions (Selva et al. 2016).

We used the TSUMAPS-NEAM parameterization (<http://www.tsumaps-neam.eu/documentation>, see also Lorito et al. 2015; Selva et al. 2016) and a similar approach for hazard computation, though we considered fewer epistemic alternatives. Here, for example, we consider only one seismogenic depth interval for each subduction zone, and only one earthquake scaling relation (Strasser et al. 2010). The surface extension A is a priori constrained to the expected value of the respective magnitude-size scaling empirical relation, neglecting any predictive uncertainty regarding the fault length and width. Note that the surface extension is assumed independent of the average depth of the scenario, and therefore compatible with the hypothesis of uniform stress drop (Bilek and Lay 1999).

For each modeled magnitude and each possible position in the seismogenic domain of the mesh, a ruptured surface is built by starting from a geometrical center and then by iteratively adding more and more neighbor mesh cells. This procedure is arrested when the selected area exceeds the expected value from the selected scaling relation. Duplicated surfaces may be generated and they are considered only once. The surfaces whose centroid is farther than $0.1 \cdot \sqrt{A}$ from the initial cell centroid are discarded. This selection inevitably leads to less numerous surface sets as the earthquake magnitude increases. No constraint is imposed on the length L (distance along strike) and width W (distance along dip), and thus the set of ruptures explores a wide range of aspect ratios

L/W . It is generally observed that for most of the selected areas $L > W$ due to the larger extension along strike of the subduction zones.

We verified that, for each magnitude bin, the selected set of surfaces covers the irregular seismogenic surface rather homogeneously, apart from some tapering towards the edges of the seismogenic domain. Figures ESM2(a-b-c) in the Electronic Supplementary Material show the number of events generating slip within each cell of the Calabrian Arc mesh at three magnitude bins.

Within each of the identified rupture areas, five slip distributions are computed to explore the earthquake aleatory variability using a stochastic composite source model (Zheng et al. 1994; Ruiz et al. 2011). This model is based on the random spatial distribution of overlapping circular dislocations of different sizes over the pre-defined slipping surface. These individual dislocations will henceforth be referred to as “sub-asperities”. The number of sub-asperities for a given size is defined to ensure that the slip spectral amplitude decays as k^2 (where k represents the radial wavenumber). The number of asperities of a given size is given by a power law relationship such that the cumulative distribution of sub-asperities against radius is:

$$N(r > R) = pR^{-2}, \quad (5)$$

where p is a fractal dimension constrained by the imposed seismic moment and stress drop (Zheng et al. 1994). In Eq. (5) the fractal dimension is 2 ensuring the k^{-2} decay of the slip spectral amplitude. In our model, the sub-asperities have radii ranging between $R_{min} \sim 5\Delta x$ and $R_{max} \sim 0.35W$, with Δx being the average of the mesh-cell linear sizes and W the width as inferred from the selected scaling relation. Each sub-asperity contains an individual slip distribution based on the Eshelby’s (1957) circular crack slip function (Ruiz et al. 2011). The distribution of circular sub-asperities over non-planar faults is ensured by the implementation of a multi-lateration scheme that allows for the distance across non-planar surfaces to be accurately calculated (Herrero and Murphy 2018). Once all the sub-asperities have been placed on the fault surface, they are summed together producing a slip distribution that has the expected spectral amplitude k^{-2} decay.

The location of each sub-asperity is randomly chosen according to a Probability Density Function (PDF). In this approach, this PDF is in turn imposed as a combination of two PDFs. The first PDF is depth-independent and is either a Gaussian or a sum of several Gaussian functions. Both the number of Gaussian functions (from 1 to 4) and their centers are randomly drawn from a uniform distribution. The Gaussian function(s) provide a slight focusing of the slip, allowing exploration of the variability of the size and slip amplitude of the main sub-asperity. The second PDF is based on the distribution of rigidity and coupling with depth. The role of this second PDF is central since it is used to include the shallow slip amplification.

So, to obtain the five slip distributions previously mentioned, the first PDF is calculated five times, for all the rupture areas defined at all available positions for all earthquake magnitudes on each considered subduction zone. The detailed description of the features of the second PDF will be provided in the next sub-section.

2.4. Slip Weight Function

The final depth-dependent PDF is built by combining the Gaussian PDF with a Slip Weight Function (SWF), which is a function of rigidity and coupling. The average rigidity profile (Fig. 1a) allows us to define a rigidity value as $\mu_n = \mu(\bar{z}_n)$, where the subscript n refers to the n -th cell and \bar{z}_n represents the average depth of the n -th cell. Similarly, the coupling associated with each cell can be defined as $K_n = K(\bar{z}_n)$. Figure 3 shows the assumed distributions of rigidity μ_n (panel a) and coupling K_n (panel b) for the Calabrian Arc. For a single earthquake, it is reasonable to expect the slip to be larger where the rigidity is smaller, and the coupling is larger. Therefore, we defined:

$$SWF_n = C_f \frac{K_n}{\mu_n}, \quad (6)$$

with SWF_n representing the cell-discretized Slip Weight Function and C_f is a normalization factor defined such that $\sum_{n=1}^N SWF_n = 1$, where N is the total number of cells on the seismogenic portion of the subduction interface. Once a specific rupture

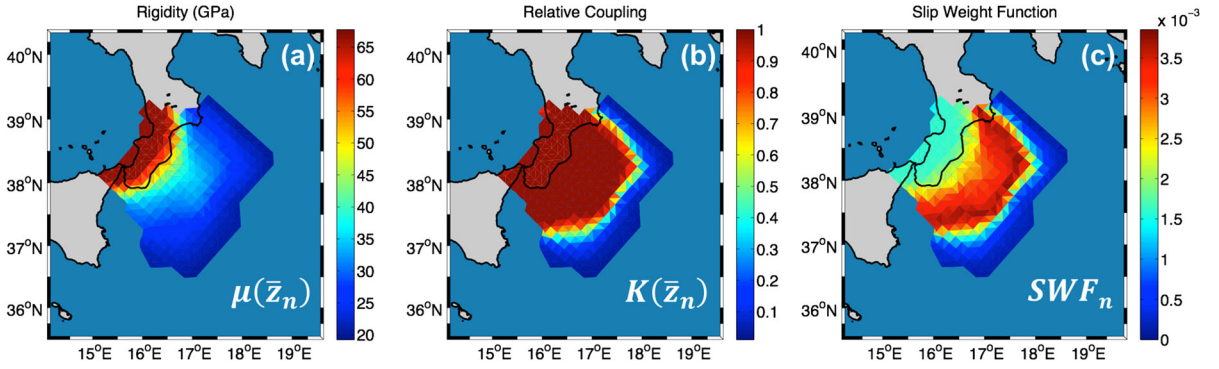


Figure 3

a Rigidity distribution expressed in GPa, **b** relative coupling, **c** slip weight function assumed for the Calabrian Arc. $\mu(\bar{z}_n)$ and $K(\bar{z}_n)$ are functions of the average depth \bar{z}_n of the n -th cell (see the text before Eq. (6) for details)

surface is extracted, the restricted SWF_n is normalized and hence it is the second depth-dependent PDF. The SWF_n for the Calabrian Arc is shown in Fig. 3c.

In Fig. 4, a scheme for the k^{-2} slip distribution computation is presented for a $M_w = 8.6$ event on the Calabrian Arc. Figure 4a is an example of random multiple Gaussian PDF extraction, whose features were described in Sect. 2.2. The left-hand side of Fig. 4 summarizes the steps leading to the definition of one of the slip distributions for the case with depth-dependent rigidity and coupling. Hereafter, we refer to the set of slip distributions generated in this way as the “depth-dependent set”. Figure 4b shows the SWF_n defined within the ruptured area. Figure 4c is the normalized product between the random Gaussian PDF (panel a) and the SWF_n (panel b). This PDF is used to modulate the distribution of the sub-asperity centers that represents the phase of the k^{-2} distribution.

For comparison, for each slip distribution in this set, we also compute a corresponding depth-independent k^{-2} slip map by considering uniform rigidity ($\mu = 33$ GPa) and coupling on the fault. In this case, the slip distribution depends only on the Gaussian PDF. Hereafter, we refer to this set of slip distributions generated in this simpler way as the “depth-independent set”. The right-hand side of Fig. 4 shows that in this case the sub-asperity location is modulated only by the random Gaussian PDF.

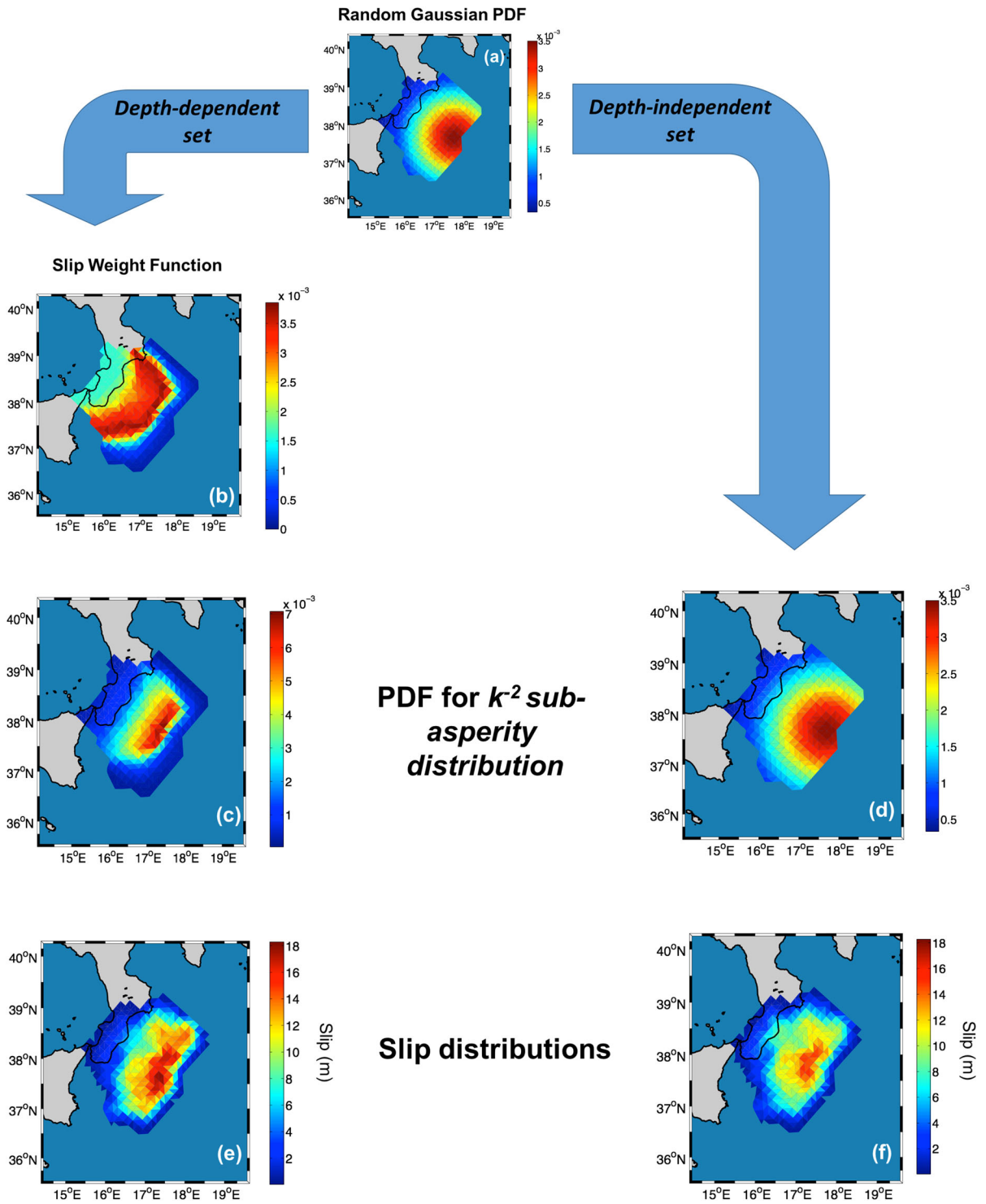
Figure 4e, f show the slip distributions computed starting from the two different schemes. For the

depth-dependent set, the effect of the variable SWF_n included in the k^{-2} PDF is to enlarge the shallow high-amplitude patch of slip along the strike direction. Moreover, the smaller value of the shallow rigidity with respect to the reference one (i.e., $\mu = 33$ GPa) contributes to the amplification of the maximum values within the patch. Since homogeneous coupling is imposed for the depth-independent set, it is worth noting that the slip decrease toward the shallower boundary is only due to the tapering effect of the Eshelby’s (1957) slip distributions (Fig. 4f).

For lower magnitudes, due to the smaller rupture area in comparison to the mesh size, it is difficult to define the k^{-2} sub-asperities distribution properly. In the configuration presented in this work, it is not possible for $M_w < 8.5$. Hence, for smaller magnitudes, no stochastic selection of slip distribution parameter is performed.

Figure 4

Sketch of the steps for the definition of the slip distributions. Left-hand column. **a** A random Gaussian function is combined with **b** the SWF_n to define **c** a depth-dependent PDF controlling the location of the sub-asperities over the mesh. Right-hand column. **d** The PDF coincides with the random Gaussian function due to homogeneous rigidity and coupling. **e** Sample slip distribution belonging to the depth-dependent set. **f** Sample slip distribution belonging to the depth-independent set. For the same stochastic slip distribution, the depth-dependent SWF_n leads to a wider along-strike extension of the shallow slip asperity. The absolute maximum slip value is larger in panel e due to the smaller rigidity at shallow depths



Hence, for the depth-independent set, a uniform slip is imposed for the smaller magnitudes as: $\bar{\delta} = M_o/(\mu \cdot A)$, where μ is the uniform rigidity, and A is the rupture area. Conversely, for the depth-dependent set, for $M_w < 8.5$, we compute a normalized seismic moment $\tilde{M}_o = \sum_{n=1}^{\tilde{N}} \mu_n SWF_n A_n$, where \tilde{N} is the number of rupturing cells. Considering the real seismic moment of the event M_o , the slip δ_n within each cell n is estimated as: $\delta_n = \frac{M_o}{\tilde{M}_o} SWF_n$. In the Electronic Supplementary Material, Figs. ESM3(a) and ESM3(b) show examples of a $M_w = 7.5$ earthquake with homogeneous slip distribution for the depth-independent set and a SWF_n -derived distribution for depth-dependent set, respectively.

2.5. Balancing Slip Probability

We defined two sets of slip distributions (either depth-dependent or depth-independent). To check the cumulative slip over the long term, that is to verify whether there is progressively larger unrealistic slip accumulation at shallow depths over multiple events, we computed the mean slip per earthquake $\hat{\delta}_n$, that is:

$$\hat{\delta}_n = \sum_{M_{wmin}}^{M_{wmax}} \sum_{i=1}^{N_{M_w}} \delta_{ni} \cdot P(M_w) \cdot P(Sl_i|M_w) \quad (7)$$

where δ_{ni} is the slip (in meters) generated in the n th cell by the i -th distribution for a given magnitude M_w . The probability $P(M_w)$ is computed from the cumulative tapered Pareto distribution (Kagan et al. 2010, Eq. 2). $P(Sl_i|M_w)$ represents the conditional probability for the slip distribution Sl_i , given the magnitude M_w . The mean $\hat{\delta}_n$ is separately computed for the two sets, considering all the sampled magnitude bins and, within each bin, all the N_{M_w} slip distributions.

Cumulating this mean slip over a large enough number of earthquakes, we obtain, up to a multiplicative constant, a proxy of the slip rate. For example, multiplying $\hat{\delta}_n$ by the product $\lambda \cdot year$, with λ representing the mean annual rate of the considered events (larger than $M_w = 6.0$ in our case) and $year$ being an arbitrarily large number of years (e.g., the number of years after which we could expect at least one event at the maximum magnitude), a spatial pattern of the released co-seismic slip over the long term can be computed. Therefore, Eq. (7) must

provide a $\hat{\delta}_n$ having a pattern compatible with the a priori hypothesis made on the coupling.

As a first attempt, we assume that, for a given magnitude, all the earthquakes have a uniform probability of occurring anywhere on the fault, that is $P(Sl_i|M_w) = \frac{1}{N_{M_w}} \forall i$. With this ansatz in Eq. (7), the resulting long-term slip from the depth-independent set turns out to be approximately uniform and $\hat{\delta}_n$ does not show any particular zone of slip accumulation on the subduction interface. A tapering towards the edges of the seismogenic zone emerges. This tapering is due both to the smaller number of events rupturing close to the boundaries as compared to those rupturing in the middle of the fault, and to the intrinsic tapering of the slip distribution. The Electronic Supplementary Material (Fig. ESM4), shows $\hat{\delta}_n$, normalized over the multiple n locations considered, from the depth-independent set of slip distributions, for the Calabrian Arc.

When the same ansatz is used for the depth-dependent distributions set, the systematic shallow slip amplification generates a spatial concentration of accumulated slip around the area where the SWF_n is maximum. This concentration of slip is highlighted in Fig. 5a, where we show the normalized $\hat{\delta}_n$ for the Calabrian Arc. Subdividing the seismogenic area into a series of along-strike sections (e.g., the black rectangle in Fig. 5a) we compute $\hat{\delta}_n$ as the mean of the normalized $\hat{\delta}_n$ within each section. Figure 5b shows the variability of $\hat{\delta}_n$ as a function of the average rigidity of the strike section, $\bar{\mu}$. For relatively small rigidity values ($\bar{\mu} < 30$ GPa), corresponding to the shallower depths, there is a drop in $\hat{\delta}_n(\bar{\mu})$. This is caused by the same reasons already discussed for the depth-independent set, but also by the near-trench decreasing coupling in the definition of the SWF_n (see Eq. (6)). Hence, the shallow coseismic slip is depleted to a certain extent at the locations where the slip is being partially accommodated aseismically in the less coupled zone. For rigidity larger than 30 GPa, a systematic decrease of the $\hat{\delta}_n(\bar{\mu})$ is observed that is approximately linear in the semi-logarithmic plot of Fig. 5b. The maximum $\hat{\delta}_n(\bar{\mu})$ in Fig. 5b corresponds to the along-strike section highlighted by a black rectangle in Fig. 5a, b.

However, in the zone where a relative coupling $K(z) = 1$ is imposed, the total long-term slip should

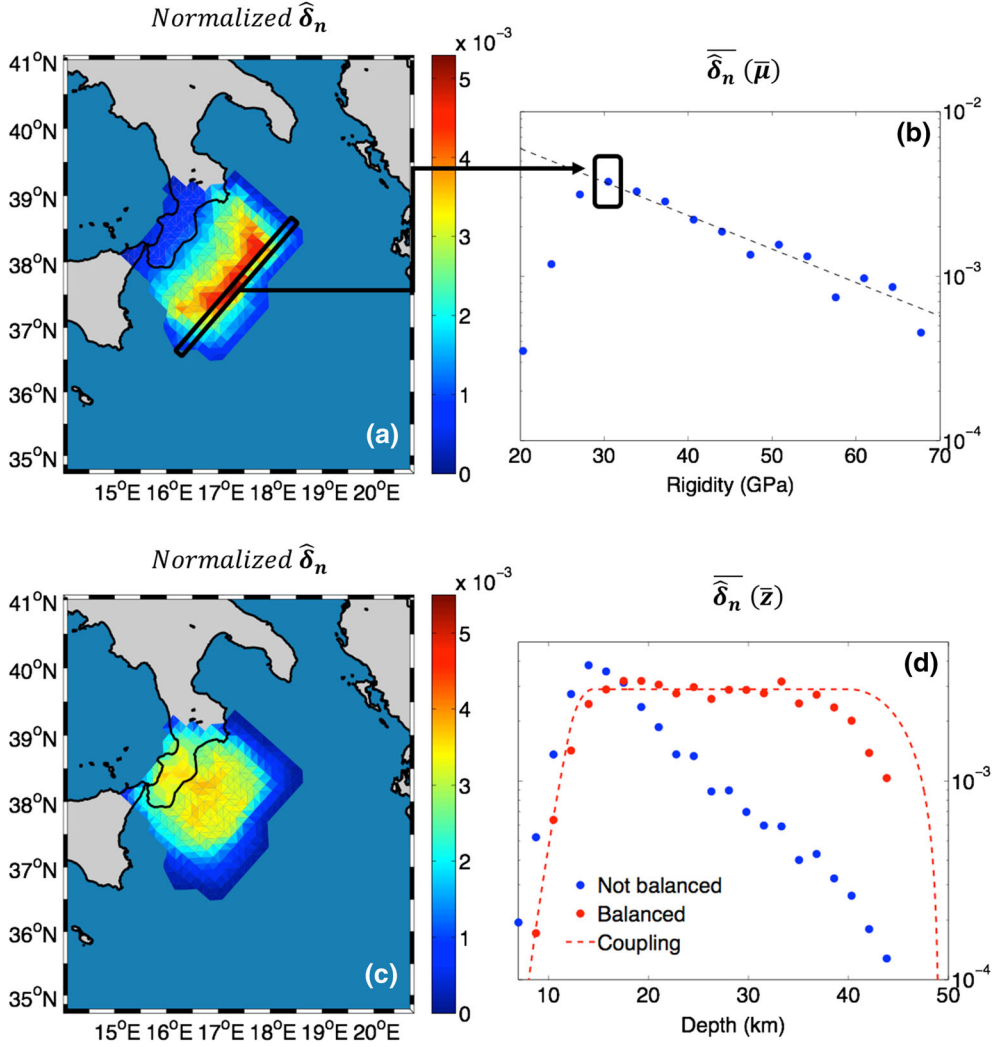


Figure 5

a Normalized stack of the slip computed from Eq. (7), used as an estimate of the total long-term slip. The domain is subdivided into along-strike sections. An example of such section is the black rectangle in panel (a). From each of these along-strike sections the mean of the $\widehat{\delta}_n$ is obtained. **b** $\overline{\widehat{\delta}_n}(\bar{\mu})$, that is along-strike mean of $\widehat{\delta}_n$, plotted versus the average rigidity within each section. Each point refers then to a different along-strike section and the black rectangle in panel (b) highlights the value corresponding to the section enclosed by the black rectangle in panel (a). The black dashed line is the best-fit solution from which the parameter β is extracted (see text for details). **c** Here the $\widehat{\delta}_n$ is computed when the $P(Sl_i M_w)$ of Eq. (9) is used: no clear trend against the depth emerges as an effect of the imposed long-term slip balancing. **d** $\widehat{\delta}_n(\bar{z})$ is plotted for non-balanced (blue dots) and balanced (red dots) long-term stack of the slip. To compare the results with the a priori coupling hypothesis, the function $\int_0^{\infty} \frac{K(z)}{K(z') dz'}$ is also plotted (red dashed line)

be uniform. In other words, the quantity $\overline{\widehat{\delta}_n}$ should track the behavior of the a priori imposed coupling. Instead, what we observe is a decrease in the amount of accumulated slip with depth.

To correct this unwanted feature, the parameter β is extracted from a linear regression $\log_{10} \overline{\widehat{\delta}_n}(\bar{\mu}) = \alpha - \beta \cdot \bar{\mu}$. We compute these

parameters considering only the points at those depths where $K(z) = 1$ (and $\beta > 0$). The best-fit solution is shown in Fig. 5b. From this regression, we can determine a ‘‘correction factor’’ to our initial ansatz, which is applied to make the mean in the Eq. (12) approximately uniform with depth. From simple geometrical considerations, we can define a

horizontal line as: $\log_{10} \overline{\delta_n^H}(\bar{\mu}) = \log_{10} \overline{\delta_n}(\bar{\mu}) + \beta \cdot \bar{\mu}$. This latter equation can be re-arranged as:

$$\overline{\delta_n^H}(\bar{\mu}) = \overline{\delta_n}(\bar{\mu}) \cdot 10^{\beta \bar{\mu}} \quad (8)$$

Incorporating this correction into the definition of $P(Sl_i|M_w)$, Eq. (8) can be used to re-normalize the conditional probability of each slip distribution as a function of the average rigidity of the scenario itself:

$$P(Sl_i|M_w) = \frac{\frac{1}{N_{M_w}} \cdot 10^{\beta \bar{\mu}_i}}{\sum_{i=1}^{N(M_w)} \frac{1}{N_{M_w}} \cdot 10^{\beta \bar{\mu}_i}} = \frac{10^{\beta \bar{\mu}_i}}{\sum_{i=1}^{N(M_w)} 10^{\beta \bar{\mu}_i}}, \quad (9)$$

where now $\bar{\mu}_i$ is the average rigidity of the i th scenario defined for the magnitude M_w , and N_{M_w} is still the number of slip distributions defined for that magnitude. It is straightforward to verify that the discrete distribution of Eq. (9) is normalized and can be regarded as a PDF.

We further observe that this procedure generates a new distribution $\overline{\delta_n}(\bar{\mu})$ that under-corrects the decreasing trend with a non-zero parameter β , that is, this trend is still present after the correction. This occurs because the regression (black dashed line in Fig. 5b) is based on the local rigidity value of each cell, whereas the balancing can be performed only on a non-local property, that is the probability of occurrence of a particular slip distribution (computed from the average rigidity of the slip distribution). However, if we estimate the angular coefficients β_1 and β_2 for the first two iterations, we have $\beta_2 < \beta_1$, meaning that the remaining unwanted trend tends to be attenuated. Iterating the procedure and replacing the parameter β in Eq. (9) by $\beta_1 + \beta_2$ we get a new log-linear behavior having more gently steeping $\beta_3 < \beta_2$. Finally, imposing a tolerance, a limited number of iterations m is always found such that $\beta_m \sim 0$. Therefore, replacing β in Eq. (9) by $\sum_{l=1}^{m-1} \beta_l$ balances the mean of the slip defined in Eq. (7). Within the presented scheme, and for all the three subduction-zones, it was verified that after two iterations the value of β is reduced by at least an order of magnitude.

The stack computed with Eqs. (7) and (9) and using $\beta = \sum_{l=1}^{m-1} \beta_l$ is shown in Fig. 5c for the Calabrian Arc. The long-term seismic slip now quite satisfactorily matches the desired coupling, Figure 5d

shows the final $\overline{\delta_n^H}$ as a function of the along-strike section average depth \bar{z} when Eq. (9) is used to define the conditional probability given the magnitude $\overline{\delta_n^H}$ of each slip distribution. For the sake of clarity, $\overline{\delta_n^H}$ is compared with the same quantity plotted in Fig. 5b, but they are now both plotted as a function of depth. Figure 5d evidences that the total balanced long-term slip matches the a priori imposed coupling both at shallower and intermediate depths.

3. From Slip Distributions to S-PTHA

This section describes how the balanced slip distributions are used for the S-PTHA.

3.1. Mean Annual Rates of Tsunami Hazard Intensity Exceedance at a Point of Interest (POI)

The total annual rate of exceedance of a given level of inundation height H_0 at each POI can be now computed as (e.g., Lorito et al. 2015):

$$\lambda_{POI}(H > H_0) = \sum_{i=1}^{N_e} P_{POI}[(H > H_0|Sl_i)] \cdot \lambda_j \cdot P(M_w) \cdot P(Sl_i|M_w) \quad (10)$$

where $P(Sl_i|M_w)$ is the balanced slip distribution Sl_i conditional probability, given the magnitude M_w , computed as in Eq. (9); $P(M_w)$ is the cumulative tapered Pareto as in Eq. (7); λ_j is the mean annual rate for earthquakes with $M_w \geq 6$, for the j -th subduction zone ($j = 1, 2, 3$); finally, $P_{POI}[(H > H_0|Sl_i)]$ is the conditional probability of exceedance of the tsunami intensity threshold H_0 at a given POI.

The mean annual rates λ_j are inherited from TSUMAPS-NEAM. The TSUMAPS-NEAM model considers epistemic uncertainty and the uncertainty on hazard curves is quantified as an ensemble distribution (Marzocchi et al. 2015; Selva et al. 2016). Here, for the sake of simplicity, we always consider only the mean of the epistemic uncertainty.

$P_{POI}[(H > H_0|Sl_i)]$ is evaluated starting with the computation of each individual slip distribution (see the example in Fig. 6a). The sea-bottom coseismic displacement generated from a slip distribution is

computed by using dislocations on triangular sub-faults in a homogeneous Poisson's solid half space (Meade 2007). The water column acts as a low-pass filter when the sea-bottom displacement is transferred to the sea-surface. This attenuation is considered by applying a two-dimensional filter of the form $1/\cosh(kH)$, where k is the wavenumber and H the effective height of the water column (Kajiura 1963). The greater importance of the filtering with respect to other approximations, like the linear combination described below, was shown for example by Løvholt et al. (2012). The sea surface displacement obtained in this way from the slip distribution of Fig. 6a is shown in Fig. 6b.

To produce virtual mareograms at the POIs (which lie approximately on the 50 m isobath), the sea surface elevation is used as the initial condition for pre-computed tsunami Green's functions. The Green's functions are the elementary mareograms produced at the POIs by Gaussian-shaped, of ~ 4 km standard deviation (~ 20 km base width) and spacing ~ 7 km, elementary sea surface elevations (Molinari et al. 2016). These mareograms were

simulated with Tsunami-HySEA, which is a non-linear shallow water GPU-optimized and NTHMP benchmarked code (de la Asunción et al. 2013; Macías et al. 2016, 2017). The simulation time was 8 h on a spatial domain enclosing the entire Mediterranean from the Gibraltar Strait (with a small buffer in the Atlantic) to the Eastern Mediterranean including the Aegean and Marmara Seas. The topobathymetry employed is SRTM30+, which has a resolution of 30 arc-seconds (~ 900 m) and is available at http://topex.ucsd.edu/WWW_html/srtm30_plus.html. The coefficients for linearly combining the mareograms produced by the elementary sources are those allowing the optimal reconstruction of the initial sea level displacement as a linear combination of Gaussian elementary displacements (Fig. 6c, which is the reconstruction of the displacement in Fig. 6b). This reconstruction is based on the potential energy of the displacement field, following Molinari et al. (2016). An example of the virtual mareogram obtained as a linear combination using the coefficients determined in this way is presented in Fig. 6d. The approximations introduced by this

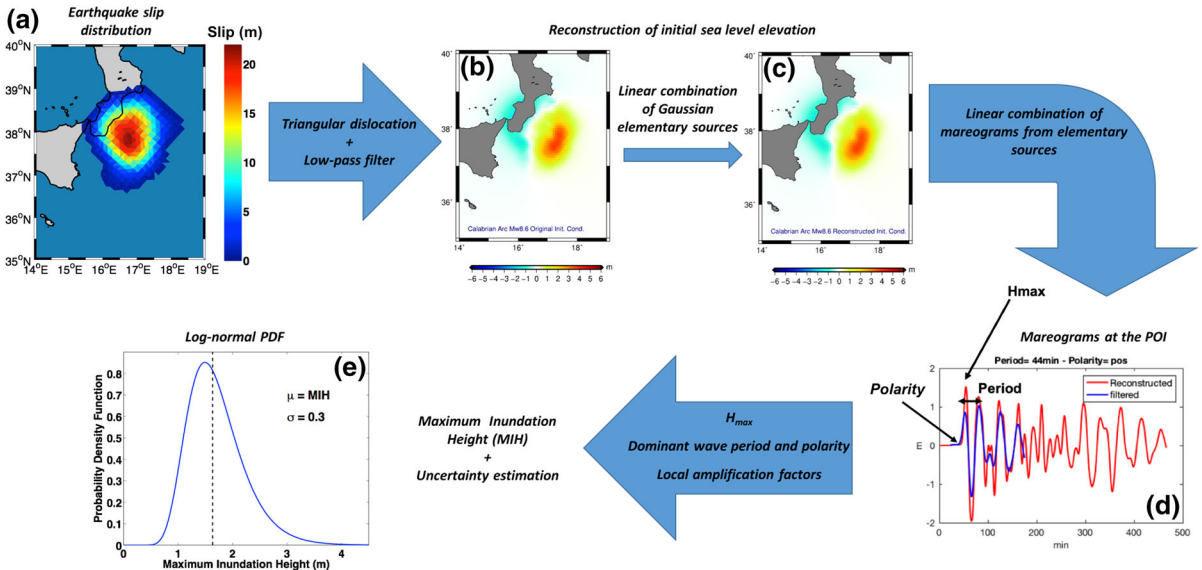


Figure 6

From the slip distributions to the tsunami probability $P_{POI}[(H > H_0|S_i)]$. **a** A slip distribution on the Calabrian Arc. **b** The corresponding initial sea level elevation by using the dislocations on triangular subfaults and the low-pass filter. **c** The reconstructed initial sea level elevation from the linear combination of Gaussian elementary sources **d** The synthetic mareogram at the POI. **e** From the analysis of the dominant wave period and polarity and the application of the corresponding local amplification factor, the tsunami log-normal PDF is computed

technique were addressed by Molinari et al. (2016); in particular, it was noted that the non-linearity of tsunami propagation, in the framework of the present linear combination scheme, did not introduce a significant bias but just some dispersion of the residuals of the reconstructed mareograms. Noting this is important since unwanted dispersion or non-linearities related to the numerical scheme might be potential issues arising from using small elementary sources for approximating large-scale tsunamis, which the superposition may indeed practically fix (e.g., Baba and Cummins, 2005). Here, we illustrate this approximation for two earthquakes on the Calabrian Arc (the same as in Fig. 6 and Fig. ESM5) and on the Hellenic Arc (Fig. ESM6), by showing the residuals of the reconstructed field, and of several mareograms at different POIs. We also point out that dispersion of the residuals of the linear combinations with respect to directly simulated mareograms (Molinari et al. 2016) is addressed by an error propagation technique, within the Glimsdal et al. (2019) scheme described here below.

Further, and finally, we need to convey simulated offshore tsunami heights into amplified heights at the coastline using approximated amplification factors (Løvholt et al. 2013, 2015; Glimsdal et al. 2019). For a specific point on the coastline, the amplified height acts as a proxy for the Maximum Inundation Height (MIH) on the coast beyond. As discussed by Løvholt et al. (2013), the amplification factor method gives exact estimates for the MIH under the special condition of non-breaking plane waves, but this method also assumes incident plane waves and hence neglects local effects such as focusing and refraction. It was recently shown that the amplification factor applied to the offshore value at the POI provides a good and almost unbiased estimator of the median of the whole MIH distribution for a set of onshore transects over a coastline stretch of a few kilometers behind the POI (Glimsdal et al. 2019). This MIH distribution is generally well approximated by a log-normal distribution (see also Davies et al. 2017). Glimsdal et al. (2019) estimated the amplification factors as a function of the offshore wave period and polarity for the TSUMAPS-NEAM POIs in the Mediterranean. They also took into account the coastal bathymetry around each POI. In this study,

we use their amplification factors. To estimate the median MIH throughout the coast behind a POI, we take the product of the offshore maximum height at the POI, as estimated from the virtual mareogram, with the specific local amplification factor from Glimsdal et al. (2019). In doing this, we extract for each scenario the period and the polarity of the leading wave at the POI estimated, as illustrated in the example of Fig. 6d, from the reconstructed mareogram. Further examples of maxima, period and polarity extraction, following Glimsdal et al. (2019), are given in Figs. ESM5 and ESM6 in the Electronic Supplementary Material. Finally, following Davies et al. (2017), for a given slip distribution S_i , we compute the conditional probability $P_{POI}[(H > H_0|S_i)]$ from a log-normal distribution having the computed MIH as median and a standard deviation $\sigma = 0.3$.

3.2. S-PTHA

In the classical hypothesis of earthquake occurrence as a Poissonian arrival time process, the probability of at least one exceedance of a threshold level of inundation height H_0 over an exposure time T is given by (e.g., Geist and Parsons 2006):

$$p(H > H_0) = 1 - e^{-\lambda(H > H_0) \cdot T}. \quad (11)$$

The hazard curves are computed through Eq. (11) for each POI.

In the following S-PTHA examples for the case-study in the Mediterranean, an exposure time $T = 50$ year is adopted.

4. S-PTHA Sensitivity

In this section, we show a sensitivity analysis performed using the case study which considers three subduction zones in the Mediterranean as potential tsunami sources. In Fig. 7, we show the hazard curves at three POIs each one located nearby one of the subduction zones.

We compare the hazard curves obtained from the depth-independent and the depth-dependent slip distribution sets. In this latter case, we present the tsunami hazard obtained by either using or not using

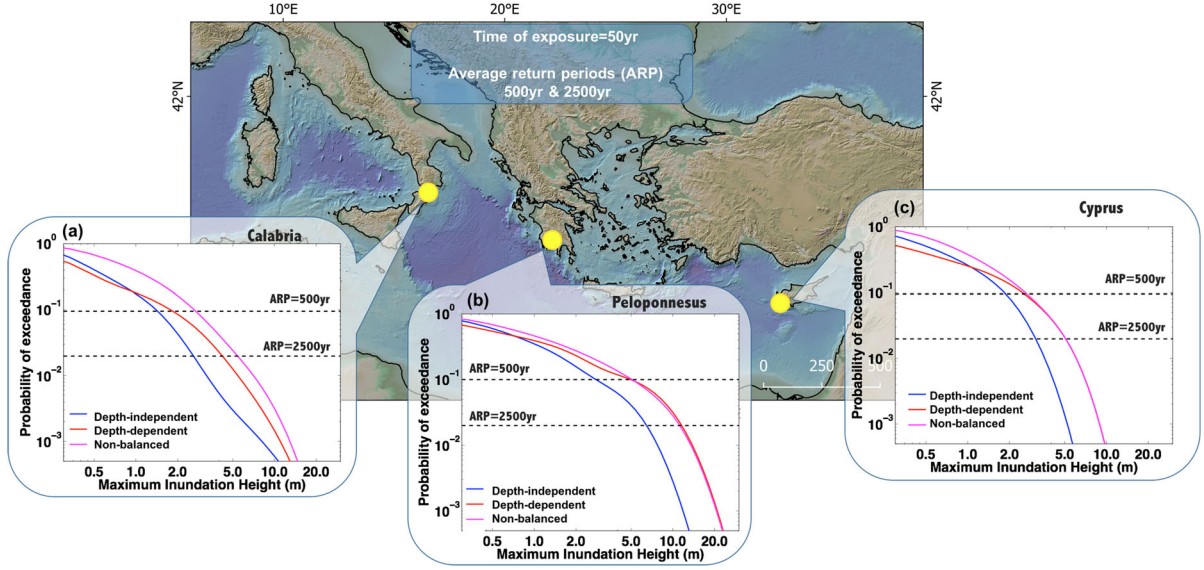


Figure 7

Hazard curves at three reference POIs on **a** the Calabrian coast, close to the Calabrian Arc subduction zone; **b** the Peloponnesus peninsula, close to the Hellenic Arc subduction zone; and **c** the Cyprus Island, close to the Cyprus Arc subduction zone. Blue and red lines are the hazard curves from the depth-independent and the balanced depth-dependent slip distributions, respectively. Magenta lines depict the hazard curves from unbalanced depth-dependent slip distributions that are obtained without imposing a spatially uniform slip rate

the balancing of the total long-term slip presented in Sect. 2.5. The probabilities of exceedance corresponding to the average return periods (ARP) of 500 year ($\sim 10\% \in 50\text{yr}$) and 2500 year ($\sim 2\% \in 50\text{yr}$) are also highlighted.

We observe a repeating pattern in the hazard curves for the three models. This similarity at the three locations could perhaps have been expected since each of the three sites is relatively close and landward of the neighboring subduction zone.

Our model from the balanced depth-dependent set, as compared to the classically-used depth-independent case, features a lower probability of smaller intensities, to which a decreased probability of occurrence of the shallow lower magnitude events may contribute, and exhibits a larger probability for higher intensities, likely due to the shallow slip amplification associated with the largest events rupturing almost everywhere over the subduction interface. The cross-over point between the two hazard curves slightly oscillates between $\text{MIH} = 0.75\text{--}1.2\text{ m}$; it also always occurs for ARPs shorter than 500 year.

It is also worth noting that the unbalanced model would overestimate the tsunami hazard at all the evaluated ARPs for the Calabrian site, or at least up to the 500 year ARP in the other cases, due to the accumulated shallow slip excess. The balanced and unbalanced models tend to provide more and more similar results for longer ARPs/larger intensities. Again, this is likely because larger magnitude events, producing larger slip and overall larger tsunamis, also feature wider ruptures along-dip, on which the balancing effect is less pronounced.

The S-PTHA sensitivity can also be illustrated by directly comparing the tsunami hazard maps. Tsunami hazard maps are obtained from hazard curves by plotting on a map view the MIH values corresponding to a fixed probability/ARP level. Defining $\text{MIH}_{\text{D-D}}$ and $\text{MIH}_{\text{D-I}}$ as the balanced depth-dependent and depth-independent MIH at each POI corresponding to a given ARP, respectively, we show in Fig. 8 the difference $\text{MIH}_{\text{D-D}} - \text{MIH}_{\text{D-I}}$ for the two ARPs of 500 year (Fig. 8a) and 2500 year (Fig. 8b) mentioned above. For the first case, on the south-west coasts of the Peloponnesus, on the western coasts of Libya and Cyprus, and on the Ionian coast

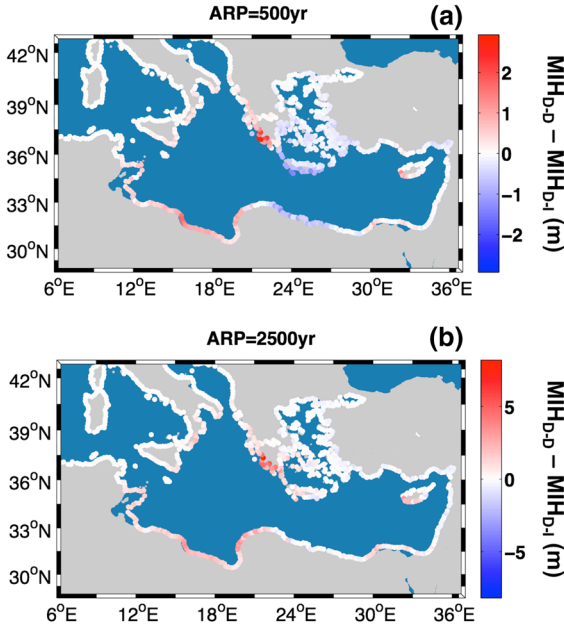


Figure 8

Difference $MIH_{D-D} - MIH_{D-I}$ for two different average return periods (ARPs). Panel (a) $ARP = 500$ year corresponding to MIH having $\sim 10\%$ to be overcome in 50 year. Panel (b) $ARP = 2500$ year corresponding to MIH having $\sim 2\%$ to be overcome in 50 year

of Calabria, the depth-dependent case provides larger MIH estimates compared to the depth-independent case. Elsewhere, we found $MIH_{D-D} < MIH_{D-I}$. However, as the ARP increases (corresponding to smaller probability of exceedance and larger expected maximum inundation heights), the balanced depth-dependent set tends to provide larger MIH estimates over all the coastlines in the vicinity of the subduction zones, as well as relatively far and perpendicularly to the source (ideally along the main tsunami energy propagation direction). As an example, for $ARP = 2500$ year, we found that the depth-independent slip distributions may lead to MIH underestimation from ~ 0.5 to ~ 6 m compared to the depth-dependent distributions case (Fig. 8b).

Two further sensitivity tests were performed to address how the S-PTHA depends on the slip distribution features.

The first one is a sensitivity test to the variation of the rigidity profile. As shown in Sect. 2, the earthquake occurrence probability and the slip distributions are constrained by the choice on the rigidity/coupling profiles. Hence, we repeated the

analysis for the two extreme rigidity profiles of Fig. 1a (Bilek and Lay 1999; and the PREM model, Dziewonski and Anderson 1981). We found that, even for these end-member cases, the depth-dependent probability of occurrence (Eq. (9)) ensures estimates of the balanced mean slip per earthquake $\hat{\delta}_n$ similar to the one shown in Fig. 5c. The results of this sensitivity test are summarized in Fig. 9, where the tsunami hazard curves are computed at the same POIs of Fig. 7. For the sake of comparison, the depth-dependent and the depth-independent tsunami hazard curves of Fig. 7 are also plotted in Fig. 9. At all three POIs, the expected overall inverse dependence of the tsunami hazard with the rigidity is obtained. Regardless, these two extreme cases still feature a smaller hazard at lower levels of inundation and a larger hazard for the higher MIH as compared to the depth-independent case.

The second and final sensitivity concerns the minimum magnitude for which the stochastic slip is modelled. To extend stochastic k^{-2} slip distributions to the events with smaller magnitude ($7.9 \leq M_w < 8.6$) we reduced the minimum size R_{min} of the stochastic slip asperities from $5\Delta x$ to Δx (See Sect. 2.3). It is worth stressing that in all the cases, below the imposed limit magnitude, for the depth-dependent distributions a slip value proportional to the SWF_n is assigned to each mesh cell (see Eq. (6) and Sect. 2.4), while above this limit the stochastic slip also allows spatial slip heterogeneity (e.g., to have small concentrated patches of large slip). The results of this sensitivity test are shown in Fig. 10 where the hazard curves of Fig. 7 are again also reported. Compared to the original results, a cross-over between the two sets is still present, while an overall increase of the hazard occurs. This means that in a real application and for coastlines in the near-field of the tsunami source, the stochastic slip should be applied as much as possible even at relatively low magnitudes, for which a finer discretization might be necessary.

The last two analyses also evidenced a higher hazard sensitivity at the Cyprus POI with respect to that at the other POIs. This might be due to the shallower minimum seismogenic depth combined with the vicinity of the Cyprus coast to the trench. Such configurations appear to be characterized by a

Effect of Shallow Slip Amplification Uncertainty

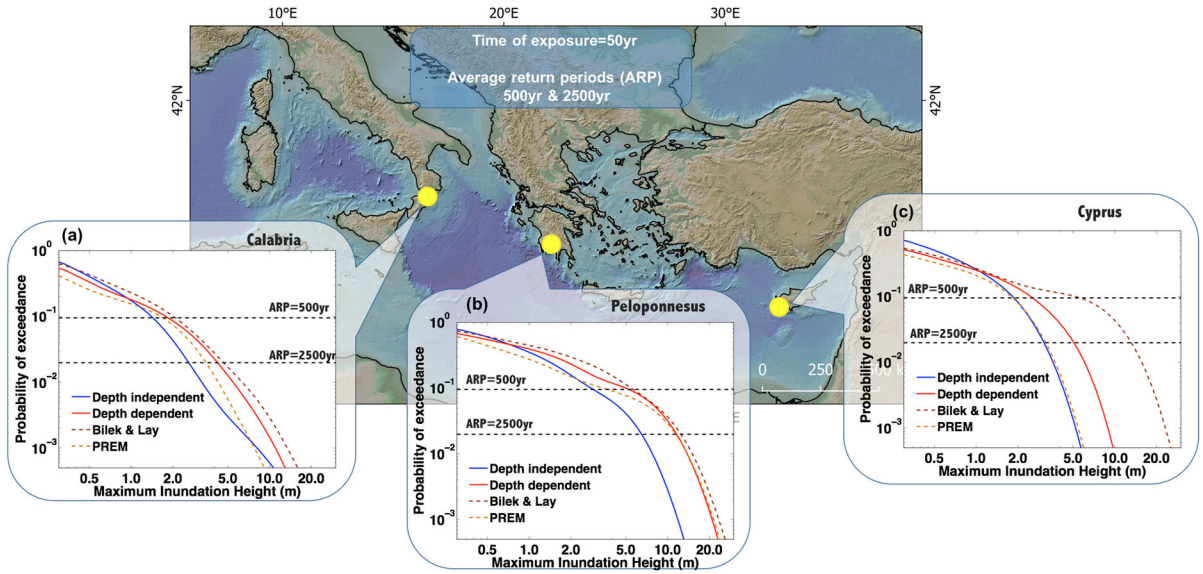


Figure 9

Hazard curves at the same reference POIs of Fig. 7 for the sensitivity test against different rigidity profiles. The hazard curves obtained from Bilek and Lay (brown dashed lines) and PREM (orange dashed lines) rigidity profiles are compared with the “depth-dependent” and the “depth-independent” cases of Fig. 7 (red and blue solid lines respectively)

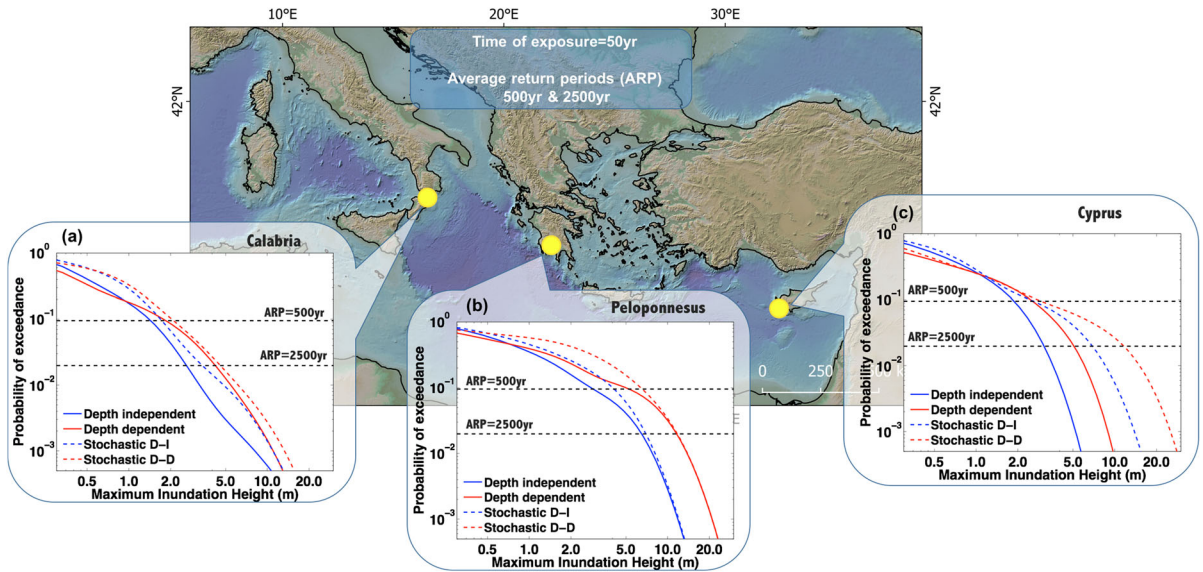


Figure 10

Hazard curves at the same reference POIs of Fig. 7 for the sensitivity test extending stochastic slip distributions down to $M_w = 7.9$. The hazard curves obtained for “depth-dependent” and “depth-independent” case (red and blue dashed lines respectively) are compared with the similar cases already shown in the Fig. 7 (red and blue solid lines respectively)

larger model (epistemic) uncertainty, therefore at least a more detailed description (i.e., a finer discretization) of the seismic scenarios is recommended to partly reduce this uncertainty.

5. Discussion

We proposed a method for S-PTHA that allows for the exploration of the expected natural variability

of the seismic slip on a subduction interface to a significant extent. Future possible improvements may include further aspects that are not fully addressed here, which we nevertheless discuss in this section.

For example, here the rupture area was limited quite tightly around the expected (best guess) value from the earthquake scaling relations. Although some along-strike variability was imparted, more systematic sampling of different aspect ratios would be perhaps desirable (e.g., Davies and Griffin 2018). Moreover, we quite subjectively judged the sampling of slip variability (five slip distributions per each rupture area) to sufficiently represents the tsunami hazard of our case study, also given the very dense spatial sampling of the rupture positions, which effectively makes the number of slip samples larger than five. However, this is known to be a challenging issue to manage (e.g., LeVeque et al. 2016; Sepúlveda et al. 2017) and a quantitative hazard convergence testing with respect to the sample dimension could be performed. Note that the proposed approach is in principle suitable for including a larger variability of all the seismic parameters, certainly including rupture size and slip distributions.

Moreover, our model considers only the end-member case of depth-dependent rigidity and uniform stress drop, whereas a more realistic model explaining observed earthquake durations should also include a variable stress drop with depth (Bilek and Lay 1999; Saloor and Okal 2018). In fact, the rigidity values implied by the constant stress drop end-member case are too low to explain some tsunami observations (Geist and Bilek 2001). Hence, we employed higher rigidity values than those of Bilek and Lay (1999), which however slightly underpredict the observed durations. To avoid this inconsistency, in a future update, we might then impart a decrease of the stress drop toward the surface, along with an increase of the rupture length, to compensate for the shorter duration, while preserving the rigidity value at a given depth. This addition would imply a modification of the SWF_n definition, which would then become: $SWF_n = CK_n / (\mu_n L_n^2)$, with L_n depending on the average depth of the cell. The consequent combined effect of a reduced shallow slip amplification and of a narrower rupture aspect ratio would have a complex impact on the resulting tsunami and on the

tsunami hazard in the near field, which certainly deserves further studies.

In our model the shallow slip amplifications are all only roughly represented through the rigidity variability as a proxy for the fault conditions in the broader sense. As a consequence, our model generates systematic larger slip where the rigidity decreases. Other improvements should be oriented to quantify and consider shallow slip amplifications due to geometrical, frictional, and structural features, as they emerge from rupture dynamics modelling (Ma and Beroza 2008; Murphy et al. 2016, 2018; Scala et al. 2017, 2019), in a more thorough way. This would address for which tectonic settings and to what extent the modelled seismogenic zones are expected to feature shallow co-seismic slip amplification.

We employed a simplified 1-D coupling model that is considered an acceptable assumption in the absence of specific local coupling models. However, the procedure can be readily extended, possibly including a lateral variation of the coupling, if such a model becomes available. It is also worth noting that the seismic coupling only appears in the definition of the SWF_n . Its net effect is to reduce the slip amount at very shallow depths for a single event. Alternatively, the coupling could be included in the definition of the conditional probability of occurrence as:

$$P(Sl_i | M_w) = \frac{10^{b\bar{\mu}_i} \cdot K(\bar{z}_i)}{\sum_{i=1}^{N(M_w)} [10^{b\bar{\mu}_i} \cdot K(\bar{z}_i)]}, \quad (12)$$

where $K(\bar{z}_i)$ is the coupling computed at the average depth \bar{z}_i of the slipping area. The introduction of this term would ensure that an earthquake breaking a limited portion of the less-coupled zone is more likely than an event slipping only within the less-coupled zone. We verified through preliminary tests that this approach only slightly modifies the hazard curves without changing the qualitative comparison between depth-independent and depth-dependent curves of Figs. 7,9 and 10.

The seismic slip distributions here presented are based on the k^{-2} paradigm that is widely used by the seismological community due to its ability to reproduce several macroscale direct observations. However, more efforts are needed to compare our slip distributions with real observations systematically.

Recently, the analysis of Source Time Functions is giving important answers about some macroscopic source properties, such as stress drop, duration, and rupture velocity for subduction events as compared to crustal earthquakes and when different subduction zones are considered (Chounet et al. 2018; Chounet and Vallée 2018). Provided enough resolution, a similar approach could be attempted to look for evidence of macroscopic differences between subduction events occurring at different depths, as already highlighted in terms of moment normalized radiated energy (Newman and Okal 1998; Saloor and Okal 2018). Seismic inversion catalogs (e.g., SRCMOD; USGS and others; Mai and Thingbaijam 2014; Ye et al. 2016) could be used to build “data-driven” SWF_n as a basis for stochastic slip distributions (Mai and Beroza 2002; Goda et al. 2014). Finally, further consistency testing, such as with mareographic and runup tsunami data (Davies and Griffin 2018), would be also desirable.

We also point out that given the, on the average, limited sea depths in the Mediterranean and the relatively short distances and propagation times, the dispersion may be considered perhaps negligible (e.g. Glimsdal et al. 2013). Hence, the results produced by the Tsunami-HySEA code used here may be considered accurate enough. Otherwise, the dispersion would influence the final hazard results, combining with the effects introduced by our depth-dependent model.

6. Conclusions

In this work, we proposed a methodology to define stochastic slip distributions for moderate-to-large magnitude earthquakes in a subduction zone, accounting for possible shallow slip amplification. These sets of events are made compatible with the convergence rate and depth-dependent coupling along the subduction interface. Depth-dependent seismicity features have been already investigated or reviewed as described in several recent papers (see Lay et al. 2012 or discussions in Lay 2018 and references therein). Such features were for example interpreted as controlled by the variability of either geometrical or structural and thermal factors (e.g.,

Satriano et al. 2014; Bletery et al. 2016) and deserve further investigation.

For illustrative and sensitivity testing purposes, we performed a simplified S-PTHA using the proposed approach for exploring the earthquake slip aleatory variability of three subduction zones in the Mediterranean. The proposed method, however, is completely general and it can thus be applied to any other subduction zone.

The shallow slip amplification is included in the single-event distributions through the definition of a depth-dependent Slip Weight Function, directly proportional to the coupling and inversely proportional to the rigidity variation. The k^{-2} slip distributions thus obtained are characterized by larger patches of higher amplitude slip as compared to the depth-independent case.

To make these single-event slip distributions compatible with the expected long-term slip reflecting convergence rate and the coupling, a depth-dependent probability of occurrence must be defined. Since this probability of occurrence is imposed to increase with increasing average rigidity of the rupture area, it is evident that the largest magnitude seismic events, rupturing almost everywhere on the surface fault, can be considered spatially equiprobable for a fixed magnitude value. Therefore, to balance the systematic slip amplification due to those largest events, the probability of occurrence of relatively smaller events ($6.0 \leq M_w \leq 8.5$) needs to be changed accordingly, with the deeper ones more probable than the shallower ones. By comparing our depth-dependent S-PTHA approach for subduction zone earthquakes to the more common depth-independent one, we found a lower probability for smaller hazard intensities and a higher probability for larger hazard intensities.

Some possible improvements of this approach have been extensively discussed, including consideration of variable stress drop together with more systematic exploration of the earthquake magnitude-size relations, and lateral along-strike seismic coupling variations.

Acknowledgements

The approach proposed here was used in the computation of a probabilistic tsunami hazard map for the North-East Atlantic, Mediterranean and connected seas (NEAM) area in the framework of the European Project TSUMAPS-NEAM (<http://www.tsumaps-neam.eu/>), co-financed by the European Union Civil Protection Mechanism, Agreement Number: ECHO/SUB/2015/718568/PREV26. The authors acknowledge Tom Parsons and Kenneth Ryan, for the fruitful scientific discussions about the topics of this work. The authors also sincerely thank the Editor, Yuichiro Tanioka, and two anonymous Reviewers for their very useful comments which led to a substantial revision and improvement of this manuscript.

Open Access This article is distributed under the terms of the Creative Commons Attribution 4.0 International License (<http://creativecommons.org/licenses/by/4.0/>), which permits unrestricted use, distribution, and reproduction in any medium, provided you give appropriate credit to the original author(s) and the source, provide a link to the Creative Commons license, and indicate if changes were made.

Publisher's Note Springer Nature remains neutral with regard to jurisdictional claims in published maps and institutional affiliations.

REFERENCES

- Argnani, A., Armigliato, A., Pagnoni, G., Zaniboni, F., Tinti, S., & Bonazzi, C. (2012). Active tectonics along the submarine slope of south-eastern Sicily and the source of the 11 January 1693 earthquake and tsunami. *Natural Hazards and Earth System Sciences*, 12, 1311–1319. <https://doi.org/10.5194/nhess-12-1311-2012>.
- Baba, T., & Cummins, P. R. (2005). Contiguous rupture areas of two Nankai Trough earthquakes revealed by high-resolution tsunami waveform inversion. *Geophysical Research Letters*, 32, L08305. <https://doi.org/10.1029/2004GL022320>.
- Bakrci, T., Yoshizawa, K., & Özer, M. F. (2012). Three-dimensional S-wave structure of the upper mantle beneath Turkey from surface wave tomography. *Geophysical Journal International*, 190(2), 1058–1076. <https://doi.org/10.1111/j.1365-246X.2012.05526.x>.
- Basili, R., Kastelic, V., Demircioglu, M. B., Garcia Moreno, D., Nemser, E. S., & Petricca, P., et al. (2013). The European Database of Seismogenic Faults (EDSF) compiled in the framework of the Project SHARE. <http://diss.rm.ingv.it/share-edsf/>. <https://doi.org/10.6092/ingv.it-share-edsf>.
- Bilek, S. L., & Lay, T. (1999). Rigidity variations with depth along interpolate megathrust faults in subduction zones. *Nature*, 400, 443–446. <https://doi.org/10.1038/22739>.
- Bilek, S. L., & Lay, T. (2018). Subduction zone megathrust earthquakes. *Geosphere*, 14(4), 1468–1500. <https://doi.org/10.1130/GES01608.1>.
- Bletery, Q., Thomas, A. M., Rempel, A. W., Karlstrom, L., Sladen, A., & De Barros, L. (2016). Mega-earthquakes rupture flat megathrusts. *Science*, 354(6315), 1027–1031. <https://doi.org/10.1126/science.aag0482>.
- Carafa, M. M. C., Kastelic, V., Bird, P., Maesano, F. E., & Valensise, G. (2018). A “Geodetic Gap” in the Calabrian Arc: Evidence for a locked subduction megathrust? *Geophysical Research Letters*, 45(4), 1794–1804. <https://doi.org/10.1002/2017GL076554>.
- Chounet, A., & Vallée, M. (2018). Global and interregion characterization of subduction interface earthquake derived from source time functions properties. *Journal of Geophysical Research: Solid Earth*, 123, 5831–5852. <https://doi.org/10.1029/2018JB015932>.
- Chounet, A., Vallée, M., Causse, M., & Courboulex, F. (2018). Global catalog of earthquake rupture velocities shows anticorrelation between stress drop and rupture velocity. *Tectonophysics*, 733, 148–158. <https://doi.org/10.1016/j.tecto.2017.11.005>.
- Christophersen, A., Berryman, K., & Litchfield, N. (2015). The GEM Faulted Earth Project, Version 1.0, April 2015, GEM Faulted Earth Project. <https://doi.org/10.13117/GEM.GEGD.TR2015.02>.
- Clift, P., & Vannucchi, P. (2004). Controls on tectonic accretion versus erosion in subduction zones: Implications for the origin and recycling of the continental crust. *Review of Geophysics*, 42, RG2001. <https://doi.org/10.1029/2003rg000127>.
- Davies, G., & Griffin, J. (2018). The 2018 Australian probabilistic tsunami hazard assessment: Hazard from earthquake generated tsunamis. Record 2018/41. Geoscience Australia, Canberra. <https://doi.org/10.11636/Record.2018.041>.
- Davies, G., Griffin, J., Løvholt, F., Glimsdal, S., Harbitz, C., Thio, H. K., et al. (2017). A global probabilistic tsunami hazard assessment from earthquake sources. *Geological Society, London, Special Publications*. <https://doi.org/10.1144/SP456.5>.
- de la Asunción, M., Castro, M. J., Fernández-Nieto, E. D., Mantas, J. M., Ortega, S., & González-Vida, J. M. (2013). Efficient GPU implementation of a two waves TVD-WAF method for the two-dimensional one layer shallow water system on structured meshes. *Computers & Fluids*, 80, 441–452. <https://doi.org/10.1016/j.compfluid.2012.01.012>.
- De Martini, P. M., Barbano, M. S., Smedile, A., Gerardi, F., Pantosti, D., Del Carlo, P., et al. (2010). A unique 4000-year long geological record of multiple tsunami inundations in the Augusta Bay (eastern Sicily, Italy). *Marine Geology*, 276, 42–57. <https://doi.org/10.1016/j.margeo.2010.07.005>.
- Devoti, R., Riguzzi, F., Cuffaro, M., & Doglioni, C. (2008). New GPS constraints on the kinematics of the Apennines subduction. *Earth and Planetary Science Letters*, 273, 163–174. <https://doi.org/10.1016/j.epsl.2008.06.031>.
- Dziewonski, A. M., & Anderson, D. L. (1981). Preliminary reference earth model. *Physics of the Earth and Planetary Interiors*, 25(4), 297–356. [https://doi.org/10.1016/0031-9201\(81\)90046-7](https://doi.org/10.1016/0031-9201(81)90046-7).

- England, P., Howell, A., Jackson, J., & Synolakis, C. (2015). Palaeotsunamis and tsunami hazards in the Eastern Mediterranean. *Philosophical Transactions of the Royal Society A*, 373, 20140374. <https://doi.org/10.1098/rsta.2014.0374>.
- Eshelby, J. D. (1957). The determination of the elastic field of an ellipsoidal inclusion and related problems. *Proceedings of the Royal Society of London, A241*, 376–396. <https://doi.org/10.1098/rspa.1957.0133>.
- Gallais, F., Gutscher, M.-A., Klaeschen, D., & Graindorge, D. (2012). Two-stage growth of the Calabrian accretionary wedge in the Ionian Sea (Central Mediterranean): Constraints from depth-migrated multichannel seismic data. *Marine Geology*, 326–328, 28–45. <https://doi.org/10.1016/j.margeo.2012.08.006>.
- Ganas, A., & Parsons, T. (2009). Three-dimensional model of Hellenic Arc deformation and origin of the Cretan uplift. *Journal of Geophysical Research*, 114, B06404. <https://doi.org/10.1029/2008JB005599>.
- Geist, E. L. (2002). Complex earthquake rupture and local tsunami hazards. *Journal of Geophysical Research*, 107(B5), ESE2-1–ESE2-16. <https://doi.org/10.1029/2000JB000139>.
- Geist, E. L., & Bilek, S. L. (2001). Effect of depth-dependent shear modulus on tsunami generation along subduction zones. *Geophysical Research Letters*, 28(7), 1315–1318. <https://doi.org/10.1029/2000GL012385>.
- Geist, E. L., & Parsons, T. (2006). Probabilistic analysis of tsunami hazards. *Natural Hazards*, 37(3), 277–314. <https://doi.org/10.1007/s11069-005-4646-z>.
- Gerardi, F., Barbano, M. S., De Martini, P. M., & Pantosti, D. (2008). Discrimination of tsunami sources (earthquake versus landslide) on the basis of historical data in eastern sicily and Southern Calabria. *Bulletin of the Seismological Society of America*, 98, 2795–2805. <https://doi.org/10.1785/0120070192>.
- Glimsdal, S., Løvholt, F., Harbitz, C., Romano, F., Lorito, S., Orefice, S., et al. (2019). A new approximate method for quantifying tsunami maximum inundation height probability. *Pure and Applied Geophysics*, 10, 1–20. <https://doi.org/10.1007/s00024-019-02091-w>.
- Glimsdal, S., Pedersen, G. K., Harbitz, C. B., & Løvholt, F. (2013). Dispersion of tsunamis: Does it really matter? *Natural Hazards and Earth System Sciences*, 13, 1507–1526. <https://doi.org/10.5194/nhess-13-1507-2013>.
- Goda, K., Mai, P. M., Yasuda, T., & Mori, N. (2014). Sensitivity of tsunami wave profiles and inundation simulations to earthquake slip and fault geometry for the 2011 Tohoku earthquake. *Earth, Planets and Space*, 66, 105. <https://doi.org/10.1186/1880-5981-66-105>.
- González, F. I., Geist, E. L., Jaffe, B., Kânoğlu, U., Mofjeld, H., Synolakis, C. E., et al. (2009). Probabilistic tsunami hazard assessment at seaside, Oregon, for near- and far-field seismic sources. *Journal of Geophysical Research: Oceans*, 114, C11023. <https://doi.org/10.1029/2008JC005132>.
- Grezio, A., Babeyko, A., Baptista, M. A., Behrens, J., Costa, A., Davies, G., et al. (2017). Probabilistic tsunami hazard analysis: multiple sources and global applications. *Review of Geophysics*, 55(4), 1158–1198. <https://doi.org/10.1002/2017RG000579>.
- Grezio, A., Sandri, L., Marzocchi, W., Argani, A., Gasparini, P., & Selva, J. (2012). Probabilistic tsunami hazard assessment for Messina Strait Area (Sicily, Italy). *Natural Hazards*, 64, 329–358. <https://doi.org/10.1007/s11069-012-0246-x>.
- Grezio, A., Tonini, R., Sandri, L., Pierdominici, S., & Selva, J. (2015). A methodology for a comprehensive probabilistic tsunami hazard assessment: Multiple sources and short-term interactions. *Journal of Marine Science and Engineering*, 3, 23–51. <https://doi.org/10.3390/jmse3010023>.
- Grünthal, G., & Wahlström, R. (2012). The European-Mediterranean earthquake catalogue (EMEC) for the last millennium. *Journal of Seismology*, 16, 535–570. <https://doi.org/10.1007/s10950-012-9302-y>.
- Guidoboni, E., Comastri, A., & Traina, G. (1994). *Catalogue of ancient earthquakes in the mediterranean area up to the 10th century*, Vol. 1, ING-SGA, pp. 504. Update catalogues available on-line at <http://storing.ingv.it/cfti/cfti4/#>.
- Gutscher, M.-A., Roger, J., Baptista, M. A., Miranda, J. M., & Tinti, S. (2006). The source of the 1693 Catania earthquake and tsunami (Southern Italy): New evidence from tsunami modeling of a locked subduction fault plane. *Geophysical Research Letters*, 33, L08309. <https://doi.org/10.1029/2005GL025442>.
- Gutscher, M.-A., & Westbrook, G. K. (2009). Great earthquakes in slow subduction, low taper margins. In S. Lallemand, F. Funiciello, (Eds.) *Subduction zone dynamics*, pp. 119–134. Springer, Berlin. <https://doi.org/10.1007/978-3-540-87974-9>.
- Hayes, G. P., Moore, G. L., Portner, D. E., Hearne, M., Flamme, H., Furtney, M., et al. (2018). Slab2, a comprehensive subduction zone geometry model. *Science*. <https://doi.org/10.1126/science.aat4723>.
- Heinrich, P., Schindele, F., & Guibourg, S. (1998). Modeling of the February 1996 Peruvian tsunami. *Geophysical Research Letters*, 25, 2687–2690. <https://doi.org/10.1029/98GL01780>.
- Herrero, A., & Murphy, S. (2018). Self-similar slip distributions on irregular shaped faults. *Geophysical Journal International*, 213(3), 2060–2070. <https://doi.org/10.1093/gji/ggy104>.
- Hollenstein, C., Müller, M. D., Geiger, A., & Kahle, H. G. (2008). Crustal motion and deformation in Greece from a decade of GPS measurements, 1993–2003. *Tectonophysics*, 449, 17–40. <https://doi.org/10.1016/j.tecto.2007.12.006>.
- Howell, A., Jackson, J., Copley, A., McKenzie, D., & Nissen, E. (2017). Subduction and vertical coastal motions in the eastern Mediterranean. *Geophysical Journal International*, 211(1), 593–620. <https://doi.org/10.1093/gji/ggx307>.
- Hyndman, R. D. (2013). Downdip landward limit of Cascadia great earthquake rupture. *Journal of Geophysical Research*, 118, 5530–5549. <https://doi.org/10.1002/jgrb.50390>.
- Hyndman, R. D., Yamano, M., & Oleskevich, D. A. (1997). The seismogenic zone of subduction thrust faults. *Island Arc*, 6(3), 244–260. <https://doi.org/10.1111/j.1440-1738.1997.tb00175.x>.
- Kagan, Y. Y., Bird, P., & Jackson, D. D. (2010). Earthquake patterns in diverse tectonic zones of the globe. *Pure and Applied Geophysics*, 167, 721–741. <https://doi.org/10.1007/s00024-010-0075-3>.
- Kajiura, K. (1963). The leading wave of a tsunami. *Bulletin of Earthquake Research Institute, University of Tokyo*, 41, 535–571.
- Kozdon, J. E., & Dunham, E. M. (2013). Rupture to the trench: Dynamic rupture simulations of the 11 March 2011 Tohoku earthquake. *Bulletin of the Seismological Society of America*, 103(2B), 1275–1289. <https://doi.org/10.1785/0120120136>.
- Laigle, M., Sachpazi, M., & Hirn, A. (2004). Variation of seismic coupling with slab detachment and upper plate structure along the western Hellenic subduction zone. *Tectonophysics*, 391(1–4), 85–95. <https://doi.org/10.1016/j.tecto.2004.07.009>.
- Lallemand, S., Schnürle, P., & Malavieille, J. (1994). Coulomb theory applied to accretionary and nonaccretionary wedges:

- Possible causes for tectonic erosion and/or frontal accretion. *Journal of Geophysical Research*, 99, 12033–12055. <https://doi.org/10.1029/94JB00124>.
- Lay, T. (2018). A review of the rupture characteristics of the 2011 Tohoku-oki Mw 9.1 earthquake. *Tectonophysics*, 733, 4–36. <https://doi.org/10.1016/j.tecto.2017.09.022>.
- Lay, T., Kanamori, H., Ammon, C. J., Koper, K. D., Hutko, A. R., Ye, L., et al. (2012). Depth-varying rupture properties of subduction zone megathrust faults. *Journal of Geophysical Research*, 117, B04311. <https://doi.org/10.1029/2011JB009133>.
- LeVeque, R. J., Waagan, K., González, F. I., Rim, D., & Lin, G. (2016). Generating random earthquake events for probabilistic tsunami hazard assessment. *Pure and Applied Geophysics*, 173(12), 3671–3692.
- Li, L., Switzer, A. D., Chan, C.-H., Wang, Y., Weiss, R., & Qiu, Q. (2016). How heterogeneous coseismic slip affects regional probabilistic tsunami hazard assessment: A case study in the South China Sea. *Journal of Geophysical Research*, 121(8), 6250–6272. <https://doi.org/10.1002/2016JB013111>.
- Lorito, S., Romano, F., & Lay, T. (2016). Tsunamiogenic major and great Earthquakes (2004–2013): Source processes inverted from seismic, geodetic, and sea-level data. In: Meyers, R. A. (Eds.), *Encyclopedia of complexity and systems science*, Springer, New York, ISBN 13:978-0-387-30440-3.
- Lorito, S., Selva, J., Basili, R., Romano, F., Tiberti, M. M., & Piatanesi, A. (2015). Probabilistic hazard for seismically induced tsunamis: Accuracy and feasibility of inundation maps. *Geophysical Journal International*, 200(1), 574–588. <https://doi.org/10.1093/gji/ggu408>.
- Lorito, S., Tiberti, M. M., Basili, R., Piatanesi, A., & Valensise, G. (2008). Earthquake-generated tsunamis in the Mediterranean Sea: Scenarios of potential threats to Southern Italy. *Journal of Geophysical Research: Solid Earth*, 113, B01301. <https://doi.org/10.1029/2007JB004943>.
- Lotto, G. C., Dunham, E. M., Jeppson, T. N., & Tobin, H. J. (2017). The effect of compliant prisms on subduction zone earthquakes and tsunamis. *Earth and Planetary Science Letters*, 458, 213–222.
- Løvholt, F., Glimsdal, S., Lynett, P., & Pedersen, G. (2015). Simulating tsunami propagation in fjords with long-wave models. *Natural Hazards and Earth System Sciences*, 15, 657–669. <https://doi.org/10.5194/nhess-15-657-2015>.
- Løvholt, F., Lynett, P., & Pedersen, G. (2013). Simulating run-up on steep slopes with operational Boussinesq models; capabilities, spurious effects and instabilities. *Nonlinear Processes in Geophysics*, 20, 379–395. <https://doi.org/10.5194/npg-20-379-2013>.
- Løvholt, F., Pedersen, G., Bazin, S., Kühn, D., Bredesen, R. E., & Harbitz, C. (2012). Stochastic analysis of tsunamirunup due to heterogeneous coseismic slip and dispersion. *Journal of Geophysical Research*, 117, C03047. <https://doi.org/10.1029/2011JC007616>.
- Ma, S., & Beroza, G. C. (2008). Rupture dynamics on a bimaterial interface for dipping faults. *Bulletin of the Seismological Society of America*, 98(4), 1642–1658. <https://doi.org/10.1785/0120070201>.
- Macías, J., Castro, M. J., Ortega, S., Escalante, C., & González-Vida, J. M. (2017). Performance benchmarking of tsunami-HySEA model for NTHMP's inundation mapping activities. *Pure and Applied Geophysics*, 174(8), 3147–3183. <https://doi.org/10.1007/s00024-017-1583-1>.
- Macías, J., Mercado, A., González-Vida, J. M., Ortega, S., & Castro, M. J. (2016). Comparison and computational performance of Tsunami-HySEA and MOST models for LANTEX 2013 scenario: Impact assessment on Puerto Rico coasts. *Pure and Applied Geophysics*, 173(12), 3973–3997. <https://doi.org/10.1007/s00024-016-1387-8>.
- Maesano, F. E., Tiberti, M. M., & Basili, R. (2017). The Calabrian Arc: Three-dimensional modelling of the subduction interface. *Scientific Reports*, 7, 8887. <https://doi.org/10.1038/s41598-017-09074-8>.
- Mai, P. M., & Beroza, G. C. (2002). A spatial random field model to characterize complexity in earthquake slip. *Journal of Geophysical Research*, 107(B11), 2308. <https://doi.org/10.1029/2001JB000588>.
- Mai, P. M., & Thingbaijam, K. K. S. (2014). SRCMOD: An online database of finite fault–fault rupture models. *Seismological Research Letters*, 85(6), 1348–1357. <https://doi.org/10.1785/0220140077>.
- Maramai, A., Brizuela, B., & Graziani, L. (2014). The Euro-Mediterranean Tsunami Catalogue. *Annals of Geophysics*, 57(4), S0435. <https://doi.org/10.4401/ag-6437>.
- Marzocchi, W., Taroni, M., & Selva, J. (2015). Accounting for epistemic uncertainty in PSHA: Logic Tree and ensemble modeling. *Bulletin of the Seismological Society of America*, 105(4), 2151–2159. <https://doi.org/10.1785/0120140131>.
- McCloskey, J., Antonioli, A., Piatanesi, A., Sieh, K., Steacy, S., Nalbant, S. S., et al. (2007). Near-field propagation of tsunamis from megathrust earthquakes. *Geophysical Research Letters*, 34, L14316. <https://doi.org/10.1029/2007GL030494>.
- Meade, B. J. (2007). Algorithms for the calculation of exact displacements, strains, and stresses for triangular dislocation elements in a uniform elastic half space. *Computation Geosciences*, 33(8), 1064–1075. <https://doi.org/10.1016/j.cageo.2006.12.003>.
- Molinari, I., Tonini, R., Lorito, S., Piatanesi, A., Romano, F., Melini, D., et al. (2016). Fast evaluation of tsunami scenarios: Uncertainty assessment for a Mediterranean Sea database. *Natural Hazards and Earth System Sciences*, 16, 2593–2602. <https://doi.org/10.5194/nhess-16-2593-2016>.
- Moore, J. C., & Saffer, D. (2001). Updip limit of the seismogenic zone beneath the accretionary prism of southwest Japan: An effect of diagenetic to low-grade metamorphic processes and increasing effective stress. *Geology*, 29(2), 183–186. [https://doi.org/10.1130/0091-7613\(2001\)029%3c0183](https://doi.org/10.1130/0091-7613(2001)029%3c0183).
- Mori, N., Muhammad, A., Goda, K., Yasuda, T., & Ruiz-Angulo, A. (2017). Probabilistic tsunami hazard analysis of the Pacific coast of Mexico: Case study based on the 1995 Colima earthquake tsunami. *Frontiers in Built Environment*, 3(34), 1–16. <https://doi.org/10.3389/fbuil.2017.00034>.
- Murphy, S., Di Toro, G., Romano, R., Scala, A., Lorito, S., Spagnuolo, E., et al. (2018). Tsunamiogenic Earthquake simulations using experimentally derived friction laws. *Earth and Planetary Science Letters*, 486, 155–165. <https://doi.org/10.1016/j.epsl.2018.01.011>.
- Murphy, S., Scala, A., Herrero, A., Lorito, S., Festa, G., Trasatti, E., et al. (2016). Shallow slip amplification and enhanced tsunami hazard unravelled by dynamic simulations of mega-thrust earthquakes. *Scientific Reports*, 6, 35007. <https://doi.org/10.1038/srep35007>.
- Nalbant, S., McCloskey, J., Steacy, S., NicBhloscaidh, M., & Murphy, S. (2013). Interseismic coupling, stress evolution, and

- earthquake slip on the Sunda megathrust. *Geophysical Research Letters*, 40(16), 4204–4208. <https://doi.org/10.1002/grl.50776>.
- Newman, A. V., & Okal, E. (1998). Teleseismic estimates of radiated seismic energy: The E/MO discriminant for tsunami earthquakes. *Journal of Geophysical Research Atmospheres*, 1032(B11), 26885–26898. <https://doi.org/10.1029/98JB02236>.
- Nielsen, S. B. (1998). Free surface effects on the propagation of dynamic rupture. *Geophysical Research Letters*, 25(1), 125–128. <https://doi.org/10.1029/97GL03445>.
- Nijholt, N., Govers, R., & Wortel, R. (2018). On the forces that drive and resist deformation of the south-central Mediterranean: A mechanical model study. *Geophysical Journal International*, 214(2), 876–894. <https://doi.org/10.1093/gji/ggy144>.
- Noquet, J.-M. (2012). Present-day kinematics of the Mediterranean: A comprehensive overview of GPS results. *Tectonophysics*, 579, 220–242. <https://doi.org/10.1016/j.tecto.2012.03.037>.
- Papadimitriou, E., & Karakostas, V. (2008). Rupture model of the great AD 365 Crete earthquake in the southwestern part of the Hellenic Arc. *Acta Geophysica*, 56, 293–312. <https://doi.org/10.2478/s11600-008-0001-6>.
- Papazachos, B., & Papazachou, C. (1997). *The earthquakes of Greece* (pp. 304). Thessaloniki: Editions Ziti.
- Paris, R., Ulvrova, M., Selva, J., Brizuela, B., Costa, A., Grezio, A., et al. (2019). Probabilistic hazard analysis for tsunamis generated by subaqueous volcanic explosions in the Campi Flegrei caldera, Italy. *Journal of Volcanology and Geothermal Research*, 379, 106–116. <https://doi.org/10.1016/j.jvolgeores.2019.05.010>.
- Piatanesi, A., & Tinti, S. (1998). A revision of the 1693 eastern Sicily earthquake and tsunami. *Journal of Geophysical Research*, 103(B2), 2749–2758. <https://doi.org/10.1029/97JB03403>.
- Polonia, A., Torelli, L., Mussoni, P., Gasperini, L., Artoni, A., & Klaeschen, D. (2011). The Calabrian Arc subduction complex in the Ionian Sea: Regional architecture, active deformation, and seismic hazard. *Tectonics*, 30, TC5018. <https://doi.org/10.1029/2010tc002821>.
- Reilinger, R., McClusky, S., Vernant, P., Lawrence, S., Ergintav, S., Cakmak, R., et al. (2006). GPS constraints on continental deformation in the Africa-Arabia-Eurasia continental collision zone and implications for the dynamics of plate interactions. *Journal of Geophysical Research*, 111(B5), B05411. <https://doi.org/10.1029/2005JB004051>.
- Romano, F., Trasatti, E., Lorito, S., Piromallo, C., Piatanesi, A., Ito, Y., et al. (2014). Structural control on the Tohoku earthquake rupture process investigated by 3D FEM, Tsunami and Geodetic Data. *Scientific Reports*, 4, 5631. <https://doi.org/10.1038/srep05631>.
- Rubin, A. M., & Ampuero, J.-P. (2007). Aftershock asymmetry on a bimaterial interface. *Journal of Geophysical Research*, 112, B05307. <https://doi.org/10.1029/2006JB004337>.
- Ruiz, J. A., Baumont, D., Bernard, P., & Berge-Thierry, C. (2011). Modelling directivity of strong ground motion with a fractal, k^{-2} , kinematic source model. *Geophysical Journal International*, 186, 226–244. <https://doi.org/10.1111/j.1365-246X.2011.05000.x>.
- Sachpazi, M., Laigle, M., Charalampakis, M., Diaz, J., Kissling, E., Gesret, A., et al. (2016). Segmented Hellenic slab rollback driving Aegean deformation and seismicity. *Geophysical Research Letters*, 43(2), 651–658. <https://doi.org/10.1002/2015GL066818>.
- Salaün, G., Pedersen, H. A., Paul, A., Farra, V., Karabulut, H., Hatzfeld, D., et al. (2012). High-resolution surface wave tomography beneath the Aegean-Anatolia region: Constraints on upper-mantle structure. *Geophysical Journal International*, 190, 406–420. <https://doi.org/10.1111/j.1365-246X.2012.05483.x>.
- Saloor, N., & Okal, E. A. (2018). Extension of the energy-to-moment parameter Θ to intermediate and deep earthquakes. *Physics of the Earth and Planetary Interiors*, 274, 37–48. <https://doi.org/10.1016/j.pepi.2017.10.006>.
- Satake, K. (1995). Linear and nonlinear computation of the 1992 Nicaragua earthquake tsunami. *Pure and Applied Geophysics*, 144, 455–470. <https://doi.org/10.1007/BF00874378>.
- Satriano, C., Dionicio, V., Miyake, H., Uchida, N., Vilotte, J.-P., & Bernard, P. (2014). Structural and thermal control of seismic activity and Megathrust rupture dynamics in subduction zones: Lessons from the Mw 9.0, 2011 Tohoku earthquake. *Earth and Planetary Science Letters*, 403, 287–298. <https://doi.org/10.1016/j.epsl.2014.06.037>. Satriano et al. 2014.
- Scala, A., Festa, G., & Vilotte, J.-P. (2017). Rupture dynamics along bimaterial interfaces: A parametric study of the shear-normal traction coupling. *Geophysical Journal International*, 209(1), 48–67. <https://doi.org/10.1093/gji/ggw489>.
- Scala, A., Festa, G., Vilotte, J.-P., Lorito, S., & Romano, F. (2019). Wave interaction of reverse-fault rupture with free surface: Numerical analysis of the dynamic effects and fault opening induced by symmetry breaking. *Journal of Geophysical Research: Solid Earth*, 124, 1743–1758. <https://doi.org/10.1029/2018JB016512>.
- Scholz, C. H. (1998). Earthquakes and friction laws. *Nature*, 391(6662), 37–42. <https://doi.org/10.1038/34097>.
- Sellier, N. C., Loncke, L., Vendeville, B. C., Mascle, J., Zitter, T., Woodside, J., & Loubrieu, B. (2013a). Post-Messinian evolution of the Florence Ridge area (Western Cyprus Arc), Part I: Morphostructural analysis. *Tectonophysics*. <https://doi.org/10.1016/j.tecto.2012.04.001>.
- Sellier, N. C., Vendeville, B. C., & Loncke, L. (2013b). Post-Messinian evolution of the Florence Rise area (Western Cyprus Arc) Part II: Experimental modelling. *Tectonophysics*, 591, 143–151. <https://doi.org/10.1016/j.tecto.2011.07.003>.
- Selva, J., Tonini, R., Molinari, I., Tiberti, M. M., Romano, F., & Grezio, A. (2016). Quantification of source uncertainties in Seismic Probabilistic Tsunami Hazard Analysis (SPTHA). *Geophysical Journal International*, 205(3), 1780–1803. <https://doi.org/10.1093/gji/ggw107>.
- Sepúlveda, I., Liu, P. L.-F., Grigoriu, M., & Pritchard, M. (2017). Tsunami hazard assessments with consideration of uncertain earthquake slip distribution and location. *Journal of Geophysical Research: Solid Earth*, 122, 7252–7271. <https://doi.org/10.1002/2017JB014430>.
- Shaw, B., Ambraseys, N. N., England, P. C., Floyd, M. A., Gorman, G. J., Higham, T. F. G., et al. (2008). Eastern Mediterranean tectonics and tsunami hazard inferred from the AD 365 earthquake. *Nature Geoscience*, 1, 268–276. <https://doi.org/10.1038/ngeo151>.
- Shaw, B., & Jackson, J. (2010). Earthquake mechanisms and active tectonics of the Hellenic subduction zone. *Geophysical Journal International*, 181(2), 966–984. <https://doi.org/10.1111/j.1365-246X.2010.04551.x>.
- Soudoufi, F., Brüstle, A., Meier, T., Kind, R., Friederich, W., & Egelados Working Group. (2015). Receiver function images of the Hellenic subduction zone and comparison to microseismicity.

- Solid Earth*, 6(1), 135–151. <https://doi.org/10.5194/se-6-135-2015>.
- Song, S. G., & Somerville, P. (2010). Physics-based earthquake source characterization and modeling with geostatistics. *Bulletin of the Seismological Society of America*, 100(2), 482–496. <https://doi.org/10.1785/0120090134>.
- Song, S. G., Dalguer, L. A., & Mai, P. M. (2013). Pseudo-dynamic source modelling with 1-point and 2-point statistics of earthquake source parameters. *Geophysical Journal International*, 196(3), 1770–1786. <https://doi.org/10.1093/gji/ggt479>.
- Sørensen, M. B., Spada, M., Babeyko, A., Wiemer, S., & Grünthal, G. (2012). Probabilistic tsunami hazard in the Mediterranean Sea. *Journal of Geophysical Research*, 117, B01305. <https://doi.org/10.1029/2010JB008169>.
- Stiros, S. C. (2010). The 8.51 magnitude, AD365 earthquake in Crete: Coastal uplift, topography changes, archaeological and historical signature. *Quaternary International*, 216, 54–63. <https://doi.org/10.1016/j.quaint.2009.05.005>.
- Strasser, F. O., Arango, M. C., & Bommer, J. J. (2010). Scaling of the source dimensions of interface and intraslab subduction-zone earthquakes with moment magnitude. *Seismological Research Letters*, 81(6), 941–950. <https://doi.org/10.1785/gssrl.81.6.941>.
- Stucchi, M., Rovida, A., Gomez Capera, A. A., Alexandre, P., Camelbeeck, T., Demircioglu, M. B., et al. (2013). The SHARE European Earthquake Catalogue (SHEEC) 1000–1899. *Journal of Seismology*, 17, 523–544. <https://doi.org/10.1007/s10950-012-9335-2>.
- Sun, T., & Wang, K. (2015). Viscoelastic relaxation following subduction earthquakes and its effects on afterslip determination. *Journal of Geophysical Research: Solid Earth*, 120, 1329–1344. <https://doi.org/10.1002/2014JB011707>.
- Tanioka, Y., & Satake, K. (1996). Fault parameters of the 1896 Sanriku tsunami earthquake estimated from tsunami numerical modeling. *Geophysical Research Letters*, 23, 1549–1552. <https://doi.org/10.1029/96GL01479>.
- Tichelaar, B. W., & Ruff, L. J. (1993). Depth of seismic coupling along subduction zones. *Journal of Geophysical Research*, 98(B2), 2017–2037. <https://doi.org/10.1029/92JB02045>.
- Tinti, S., Armigliato, A., & Bortolucci, E. (2001). Contribution of tsunami data analysis to constrain the seismic source: The case of the 1693 eastern Sicily earthquake. *Journal of Seismology*, 5, 41–61. <https://doi.org/10.1023/A:1009817601760>.
- Tinti, S., Armigliato, A., Pagnoni, G., & Zaniboni, F. (2005). Scenarios of giant tsunamis of tectonic origin in the Mediterranean. *ISET Journal of Earthquake Technology, Paper n. 464*, 42(4), 171–188.
- Tonini, R., Armigliato, A., Pagnoni, G., Zaniboni, F., & Tinti, S. (2011). Tsunami hazard for the city of Catania, eastern Sicily, Italy, assessed by means of Worst-case Credible Tsunami Scenario Analysis (WCTSA). *Natural Hazards and Earth System Sciences*, 11, 1217–1232. <https://doi.org/10.5194/nhess-11-1217-2011>.
- Urlaub, M., Petersen, F., Gross, F., Bonforte, A., Puglisi, G., Guglielmino, F., et al. (2018). Gravitational collapse of Mount Etna’s southeastern flank. *Science Advances*, 4, eaat 9700. <https://doi.org/10.1126/sciadv.aat9700>.
- Vernant, P., Reilinger, R., & McClusky, S. (2014). Geodetic evidence for low coupling on the Hellenic subduction plate interface. *Earth and Planetary Science Letters*, 385, 122–129. <https://doi.org/10.1016/j.epsl.2013.10.018>.
- Wang, K., & Dixon, T. (2004). “Coupling” semantics and science in earthquake research. *Eos (Transactions, American Geophysical Union)*, 85, 180. <https://doi.org/10.1029/2004EO180005>.
- Wang, D., & Mori, J. (2011). Rupture process of the 2011 off the Pacific coast of Tohoku Earthquake (Mw 9.0) as imaged with back-projection of teleseismic P-waves. *Earth Planets Space*, 63, 603–607. <https://doi.org/10.5047/eps.2011.05.029>.
- Wdowinski, S., Ben-Avraham, Z., Arvidsson, R., & Ekström, G. (2006). Seismotectonics of the Cyprian Arc. *Geophysical Journal International*, 164(1), 176–181. <https://doi.org/10.1111/j.1365-246X.2005.02737.x>.
- Ye, L., Lay, T., Kanamori, H., & Rivera, L. (2016). Rupture characteristics of major and great (Mw \geq 7.0) megathrust earthquakes from 1990 to 2015: 1. Source parameter scaling relationships. *Journal of Geophysical Research: Solid Earth*, 121, 826–844. <https://doi.org/10.1002/2015JB012426>.
- Yue, H., Lay, T., Rivera, L., Bau, Y., Yamazaki, Y., Cheung, K. F., et al. (2014). Rupture process of the 2010 Mw 7.8 Mentawai tsunami earthquake from joint inversion of near-field hr-GPS and teleseismic body wave recordings constrained by tsunami observations. *Journal of Geophysical Research: Solid Earth*, 119, 5574–5593. <https://doi.org/10.1002/2014JB011082>.
- Zheng, Y., Anderson, J. G., & Yu, G. (1994). A composite source model for computing realistic synthetic strong ground motions. *Geophysical Research Letters*, 21(8), 725–728. <https://doi.org/10.1029/94GL00367>.