

Journal of Thermal Analysis and Calorimetry

Combustion characteristics of Turkish hazelnut shell biomass, lignite coal and their respective blends via thermogravimetric analysis

--Manuscript Draft--

Manuscript Number:	JTAC-D-14-00783R2
Full Title:	Combustion characteristics of Turkish hazelnut shell biomass, lignite coal and their respective blends via thermogravimetric analysis
Article Type:	Original Research
Corresponding Author:	Yuda Yurum, Ph.D. Sabanci University Istanbul, TURKEY
Corresponding Author Secondary Information:	
Corresponding Author's Institution:	Sabanci University
Corresponding Author's Secondary Institution:	
First Author:	Zuleyha Ozlem Kocabas Atakli, PhD
First Author Secondary Information:	
Order of Authors:	Zuleyha Ozlem Kocabas Atakli, PhD Firuze Okyay Oner, PhD Yuda Yurum, Ph.D.
Order of Authors Secondary Information:	
Abstract:	<p>Thermal behavior and combustion kinetic of coal, hazelnut shell, and coal/hazelnut shell blends at the proper ratio were investigated with thermogravimetric analysis (TG). Four mass ratios (20, 30, 40, 50 mass %) of coal/biomass blends were prepared and oxidized under dynamic conditions from temperature 298 to 1173 K at different heating rates. TG analysis indicated that the combustion of blended samples divided into two stages namely devolatilization and char oxidation combined with coal combustion step. The influence of biomass blends on thermal and kinetic behavior of coal was studied under non-isothermal conditions. It was found that the thermal degradation temperature of coal was higher than that of blended samples due to the molecular structure strength. Ozawa-Flynn-Wall model was applied to deal with non-isothermal TG data for the evaluation of the activation energy corresponding to the combustions of coal, hazelnut shell, and coal/hazelnut shell blends. The average activation energy changed in the range of 90.9-215.3 kJ mol⁻¹, respectively, depending on blending ratio.</p>
Response to Reviewers:	<p>Dear Editor, We thank you for your comments and corrections on the manuscript. We edited the manuscript according to your comments.</p> <p>1. Please always use internationally accepted signs and symbols for units, SI units and give all dimensions according to the standard style of the Journal. Example: °C min⁻¹, or g cm⁻³. The power after the dimensions should put into superscript. (gcm⁻³) (Unfortunately this web based system does not allow to us to use advanced text formatting tools. Please accept our apology because of these inconveniences.) Dimensions in the Figures and in line 35 on Page 4 should be corrected.</p> <p>- According to Editorial comments, we used the signs and symbols for units, SI units and give all dimensions according to the standard style of the Journal. The line on page 4 was corrected and the revised points in the manuscript were highlighted with yellow. The Figure 2, 3, and 4 were corrected according to internationally accepted signs and symbols.</p>

Dear Editor,

We thank you for your comments and corrections on the manuscript. We edited the manuscript according to your comments.

1. Please always use internationally accepted signs and symbols for units, SI units and give all dimensions according to the standard style of the Journal. Example: °C min⁻¹, or g cm⁻³. The power after the dimensions should put into superscript. (gcm⁻³) (Unfortunately this web based system does not allow to us to use advanced text formatting tools. Please accept our apology because of these inconveniences.) Dimensions in the Figures and in line 35 on Page 4 should be corrected.

- According to Editorial comments, we used the signs and symbols for units, SI units and give all dimensions according to the standard style of the Journal. The line on page 4 was corrected and the revised points in the manuscript were highlighted with yellow. The Figure 2, 3, and 4 were corrected according to internationally accepted signs and symbols.

1
2
3
4
5
6
7
8
9
10
11
12
13
14
15
16
17
18
19
20
21
22
23
24
25
26
27
28
29
30
31
32
33
34
35
36
37
38
39
40
41
42
43
44
45
46
47
48
49
50
51
52
53
54
55
56
57
58
59
60
61
62
63
64
65

Combustion characteristics of Turkish hazelnut shell biomass, lignite coal and their respective blends via thermogravimetric analysis

*Züleyha Özlem Kocabaş-Ataklı, Firuze Okyay-Öner, Yuda Yürüm**

Faculty of Engineering and Natural Sciences, Sabanci University, Tuzla, Istanbul 34956, Turkey

* Author to whom correspondence should be addressed

yyurum@sabanciuniv.edu, Tel: +90 216 4839512 Fax: +90 216 4839550

1
2
3
4
5
6
7
8
9
10
11
12
13
14
15
16
17
18
19
20
21
22
23
24
25
26
27
28
29
30
31
32
33
34
35
36
37
38
39
40
41
42
43
44
45
46
47
48
49
50
51
52
53
54
55
56
57
58
59
60
61
62
63
64
65

Abstract: Thermal behavior and combustion kinetic of coal, hazelnut shell, and coal/hazelnut shell blends at the proper ratio were investigated with thermogravimetric analysis (TG). Four mass ratios (20, 30, 40, 50 mass %) of coal/biomass blends were prepared and oxidized under dynamic conditions from temperature 298 to 1173 K at different heating rates. TG analysis indicated that the combustion of blended samples divided into two stages namely devolatilization and char oxidation combined with coal combustion step. The influence of biomass blends on thermal and kinetic behavior of coal was studied under non-isothermal conditions. It was found that the thermal degradation temperature of coal was higher than that of blended samples due to the molecular structure strength. Ozawa–Flynn–Wall model was applied to deal with non-isothermal TG data for the evaluation of the activation energy corresponding to the combustions of coal, hazelnut shell, and coal/hazelnut shell blends. The average activation energy changed in the range of 90.9–215.3 kJ mol⁻¹, respectively, depending on blending ratio.

Keywords: Biomass. Coal blend. Combustion. Thermogravimetric analysis. Non-isothermal kinetics. Activation energies.

Introduction

Energy concerns arising from the diminution of fossil fuel supplies have increased the attentions to find economically feasible energy supply to substitute the fossil energy. Biomass offers significant advantages as a feedstock not only representing the least costly renewable energy options in most cases but also decreasing the dependency on limited fossil fuels [1]. Biomass fuels include wood, agricultural residues, forest residues, and energy crops [2]. Combustion is one of the most simple and direct technology utilizing of biomass to displace some amount of fossil fuel for commercial or industrial uses: hot air, hot water, steam, and electricity. Recently, thermal analysis provides a quick quantitative technique for the assessment of combustion processes under non-isothermal conditions and the effective kinetic parameters for the various decomposition reactions can be predicted [3–8].

The combustion of biomass alone reduces the releases of carbon dioxides and sulfur oxides, however it should be noticed that in comparison with solid fossil fuels,

1 biomass contains much less carbon and more oxygen and has a low heating value [9].
2 Co-firing biomass with coal, in comparison with single coal or biomass firing, helps
3 to improve combustion performance, meet pollutant emission limits, and decrease
4 concurrently fossil fuels consumption and the fuel cost [10]. Additionally, previous
5 research indicated that combustion of biomass, without fossil fuels led to technical
6 problems such as corrosion and fouling on the hot surfaces [11]. Therefore, biomass
7 as blended with coal during combustion is more advantageous to solve the problems
8 encountered when it is burned alone. A number of studies on coal and biomass [2, 3,
9 8, 12–14] combustion with thermogravimetric analysis (TG) have been reported
10 including some TG studies on co-combustion coal and biomass [10, 12]. However,
11 there is a still need to study TG analysis of a different waste biomass blended with
12 coal to develop our understanding of the impact of a different waste biomass on
13 combustion parameters.
14
15
16
17
18
19
20
21
22

23 Hazelnut shell as an agricultural waste product has great potential to be used
24 for energy source since it is renewable, sustainable and cheap energy sources. Turkey
25 is the world's leading hazelnut producer and approximately 3×10^5 tons of hazelnut
26 shells have been produced per year [15]. Such a residue has no usage area and
27 disposal of these large volumes is problematic. Therefore research on the combustion
28 process of a hazelnut shell waste would be beneficial for providing application as a
29 biomass fuel. Furthermore information about biomass combustion kinetics is
30 important to evaluate biomass as a feedstock for fuel and control of thermochemical
31 processes.
32
33
34
35
36
37
38
39

40 The present research work focused on the kinetic assessments of the
41 combustion of hazelnut shell, Beypazari lignite and their blending under non-
42 isothermal conditions. Heating rate on the combustion characteristics and kinetic
43 parameters were investigated. The thermal properties and activation energy of the
44 hazelnut shell blended coal samples were systematically analyzed by the Ozawa-
45 Flynn-Wall model. Furthermore, the non-isothermal data was utilized to determine
46 reaction order of hazelnut shell blended coal samples considering Avrami theory. The
47 data obtained will be useful to understand the behavior of coal/hazelnut shell blends
48 during combustion, and to investigate extensive studies for their possible application
49 in bigger scales.
50
51
52
53
54
55
56
57
58
59
60
61
62
63
64
65

Experimental

Materials and characterization

The coal came from Beypazari, a region central Anatolia. The hazelnut shell used in this study was obtained from various areas of Turkey. Prior to analysis, the coal samples were ground to 80 mesh ASTM under a nitrogen atmosphere and dried at 383 K under a vacuum. For hazelnut shell samples, 80 mesh size was used for this study. The proximate analyses of the Beypazari lignite and hazelnut shell were done at the Instrumental Analysis Laboratory of the Scientific and Technical Research Council of Turkey, Ankara. Morphology of the hazelnut shell was examined by scanning electron microscopy. Leo Supra 35VP Field emission scanning electron microscope (SEM), Leo 32 was used for images. Imaging was generally done at 2–5 keV accelerating voltage, using the secondary electron imaging technique.

Thermogravimetric analysis

TG measurements were performed on a Netzsch STA 449 C Jupiter differential thermogravimetric analyzer (precision of temperature measurement ± 2 °C, microbalance sensitivity < 5 μg) under air atmosphere with a flow rate 60 mL min^{-1} , with heating rates of 5, 10, 20, and 30 K min^{-1} over 298 to 1173 K temperature range. In order to obtain TG curves, each sample (coal and hazelnut shell) as well as each of the blends (Coal–hazelnut shell 20 mass %, Coal–hazelnut shell 40 mass %, and Coal–hazelnut shell 50 mass %) was approximately 25 mg in order to prevent heat transfer limitations. To assure reproducibility of satisfactory results, TG experiments were replicated at least twice.

Kinetic Theory

The rate of degradation or conversion, $d\alpha/dt$, is the linear function of a temperature-dependent constant, $k(T)$, and the temperature-independent function of conversion, $f(\alpha)$ for heterogeneous solid-state reactions. It can be defined as follows:

$$\frac{d\alpha}{dt} = k(T)f(\alpha) \quad (1)$$

Temperature dependence of the rate constant is usually described by the Arrhenius equation. The mathematical description of the data is defined in terms of three kinetic parameters, as preexponential factor, A , the activation energy, E , and an algebraic expression of the kinetic model in function of the conversion α , $f(\alpha)$.

$$\frac{d\alpha}{dt} = Ae^{-\frac{E}{RT}} f(\alpha) \quad (2)$$

At the same time,

$$\beta = \frac{dT}{dt} = \text{constant} \quad (3)$$

where β is the heating rate. By inserting this term into Eq. 2, the above rate expression can be converted into non-isothermal rate expressions describing reaction rates as a function of temperature at a constant β . Eq. 2 can be transferred as follows:

$$\frac{d\alpha}{dT} = \frac{1}{\beta} Ae^{-\frac{E}{RT}} f(\alpha) \quad (4)$$

The integration of the Eq. 4 up to conversion α gives directly:

$$\int_0^\alpha \frac{d\alpha}{f(\alpha)} = g(\alpha) = \frac{A}{\beta} \int_{T_0}^T e^{-\frac{E}{RT}} dT \quad (5)$$

According to non-isothermal isoconversional methods applied by Ozawa [16], Wall and Flynn [17] using the Doyle's approximation of $p(x)$ [18], the activation energy can be determined by assessing the temperatures corresponding to fixed values of α from experiments at different heating rates:

$$\ln(\beta) = \ln \left[\frac{AE}{Rg(\alpha)} \right] - 5331 - 1052 \frac{E}{RT} \quad (6)$$

The activation energy E can be calculated by plotting $\ln\beta$ versus $1/T$.

1
2 In order to obtain reaction order, Avrami theory [19–21] studied and the non-
3 isothermal data where the variation of the degree of conversion with temperature
4 and heating rate can be explained as:
5
6

$$\alpha(T) = 1 - e \left[\frac{k(T)}{\beta^n} \right]$$

7
8
9
10
11
12 (7)
13
14
15

16 Taking double logarithm of both sides of Eq. 7 with substituting Arrhenius equation
17 gives
18

$$\ln[-\ln(1-\alpha(T))] = \ln A - \frac{E}{RT} - n \ln \beta \quad (8)$$

19
20
21
22
23
24
25 A plot of $\ln[-\ln(1-\alpha(T))]$ versus $\ln\beta$, which is obtained at the same temperature
26 from a number of isotherms taken at different heating rates, should give in straight
27 lines. The slope will have the value of the reaction order or the Flynn–Wall–Ozawa
28 exponent n [16, 23]. Extra aspects of the technique apply to examine the process that
29 is explained by Ozawa [24].
30
31
32
33
34
35

36 **Results and Discussion**

37 38 39 Characterization of Materials

40
41
42
43 The proximate analysis of Beypazarı lignite and hazelnut shell was
44 demonstrated in Table 1. The samples contained different percentages of fixed
45 carbon, volatile matter, moisture and ash content. The Beypazarı lignite indicated
46 higher amount of ash yield as compared to hazelnut shell, while a higher percentage
47 of moisture content was detected in hazelnut shell sample. Biomass typically has a
48 high volatile matter content up to 80-90% [25]. Similar situation was observed and
49 the hazelnut shell sample had much more volatile matter and much lower fixed carbon
50 in contrast to the lignite sample. Higher volatile matter content of the biomass
51 provides an improved combustion with a better burn out and lower unburned carbon
52 in the ash [26].
53
54
55
56
57
58
59
60
61
62
63
64
65

Table 1. Proximate Analysis of the Beypazarı lignite and hazelnut shell

Proximate analysis /%	Beypazarı lignite	Hazelnut shell
Volatile matter	34.9	86.2
Fixed Carbon	22.5	12.6
Ash	36.4	1.2
Moisture content	6.2	7.8

Morphology of the hazelnut shell and the residue of fired hazelnut shell obtained at 1173 K were investigated by SEM, Fig. 1. Physical appearances of hazelnut shells and its ashes were quite different. The hazelnut shell had lumpy granular structure before heat treatment. After heat treatment, some voids in a micron scale were appeared and the morphology of burned hazelnut shell resembled a sponge.

-Figure 1-

Effect of heating rate

The thermal degradation behavior of coal, hazelnut, and coal–hazelnut shell blended samples were determined by TG at four heating rates (β) 5, 10, 20, and 30 K min⁻¹. TG results for coal, hazelnut, coal–hazelnut shell 20 mass %, coal–hazelnut shell 40 mass %, and coal–hazelnut shell 50 mass % were presented in Fig. 2. As it might be examined, the mass loss characteristics under oxidative atmosphere for coal and hazelnut shell showed different combustion profiles. One sequential zone was observed in coal case, while hazelnut shell and blended samples have two. For those samples, devolatilization stage was followed by char oxidation combined with coal combustion step [12]. As shown in Fig 2, the thermal degradation temperature of coal is higher than that of blended coal samples. This was explained by the difference between molecular structure strength of coal and hazelnut shell. According to structural analysis study of Demirbaş [27], hazelnut is mainly consisting of 30.4%

1 hemicellulose, 26.8% cellulose, and 42.9% lignin polymer that are connected with
2 very weak ester bonds. However, high aromatic content in the coal structure requires
3 high temperature to decompose [13].
4
5
6

7 The solid residue yields were about 36.1% for coal and 29.3% for coal–
8 hazelnut shell 20 mass %. The residual mass decreased with an increasing amount of
9 hazelnut shell content in the blend and it reached to 0.1% for hazelnut shell. This
10 indicated the high combustion potential of the hazelnut shell sample. Since the
11 hazelnut shell contained less fixed carbon and high volatile matter that volatilized
12 more easily under the combustive conditions. Furthermore, with the increase of
13 heating rate, the samples were experienced a short exposure time to the particular
14 temperature which in turn affects combustion kinetics. When heating rate increased,
15 TG curves were very close to each other, and mass loss observed at higher
16 temperatures. This trend was attributed to changes in the heat transfer.
17
18
19
20
21
22
23
24
25
26
27

28 -Figure 2- 29 30 31

32 Analysis of kinetic parameters 33 34 35

36 The isoconversional method is mostly studied for the investigation of
37 combustion kinetics of carbonaceous material. Using this method, at least three
38 dynamic curves with different heating rates were required. For this study, different
39 percentages of conversion (α) 20, 30, 40, and 50 % were considered. The plots of $\ln\beta$
40 versus $1/T$ with respect to several conversion degrees were depicted in Fig. 3. The
41 correlation between conversion and activation energy is essential to explore the
42 mechanism and kinetics of decomposition process. It is noted that, there were mostly
43 linear relations for the four different percentages of conversion. Therefore, the
44 activation energies were calculated from the corresponding slopes according to the
45 Ozawa–Flynn–Wall kinetic model. Tables 2 and 3 indicated the activation energies at
46 given conversion and average activation energies of the coal, hazelnut shell and
47 blended samples. It was observed that the calculated activation energies for hazelnut
48 shell blended samples were found consistently higher than those of coal. Similar
49 behavior has been previously reported by Siti et al. [28] where they used Malaysian
50
51
52
53
54
55
56
57
58
59
60
61
62
63
64
65

1 oil palm biomass, sub-bituminous coal in their experiment. According to Gil et al.
2 [29], a high temperature or a longer reaction time is obligatory for the reactions with
3 high activation energy. This could be attributed to the higher activation energy in
4 combustion of biomass as compared to coal. On the other hand, the 20 mass % blend
5 was reasonably similar to activation energy of the coal sample. Resembling the
6 activation energy corresponding to coal was consistent with the activation energies
7 that were reported for low rank coal [12]. Activation energies corresponding to the
8 hazelnut shell here used are higher than those found for low rank coals but lower than
9 E values for materials such as residues from composting [30] and sugarcane bagasse
10 [31]. Furthermore, increasing the temperature, combustion of the sample followed
11 with mass losses largely attributing to decrease in activation energies.
12
13
14
15
16
17
18
19
20
21
22

23 **-Figure 3-**
24
25
26

27 Fig. 4 showed $\ln[-\ln(1-\alpha(T))]$ versus $\ln\beta$ plot for the comparison of reaction
28 orders. It was assumed that n values depend on temperature and type of carbonaceous
29 material. Temperature dependence of n values for coal, and hazelnut shell blended
30 coal samples were represented in Table 4. It could be seen that the reaction order
31 values were close to zero and the reaction order in the range of 0.17–0.40. There was
32 not any linear relationship between the reaction order and activation energy values.
33 Coal and coal–hazelnut shell 20 mass % had comparable n values and greater than 50
34 mass % blended and hazelnut shell samples. It was obvious that the reaction orders
35 were dependent on the extent of the reaction and they were not constant during the
36 reaction proceeded. This behavior was attributed to presence of multiple reaction
37 steps as devolatilization and combustion. The n value for hazelnut shell was in
38 agreement with those found in the literature in the combustion of biowastes [32].
39
40
41
42
43
44
45
46
47
48
49
50

51 **-Figure 4-**
52
53
54
55
56
57
58
59
60
61
62
63
64
65

Table 2. Values of activation energy, slopes and correlation coefficients (R^2) corresponding to linear fittings in Fig. 3.

Sample	Conversion	Slope	E/ kJmol^{-1}	R^2
Coal	20	-17.3	135.9	0.99
	30	-12.6	99.5	0.99
	40	-9.1	71.9	0.99
	50	-7.1	56.1	0.98
Coal–hazelnut shell 20 mass %	20	-19.3	152.5	0.95
	30	-14.2	112.2	0.96
	40	-8.6	67.9	0.97
	50	-6.0	47.4	0.95
Coal–hazelnut shell 40 mass %	20	-20.4	161.2	0.96
	30	-10.0	104.3	0.96
	40	-10.4	82.2	0.92
	50	-8.5	67.2	0.98
Coal–hazelnut shell 50 mass %	20	-25.7	202.9	0.99
	30	-23.3	184.2	0.99
	40	-19.7	155.6	0.93
	50	-15.9	125.6	0.96
Hazelnut shell	20	-27.4	216.5	0.98
	30	-27.3	215.7	0.98
	40	-26.4	208.6	0.98
	50	-27.9	220.5	0.98

Table 3. Values of activation energy estimated by the Ozawa–Flynn–Wall isoconversional method

Sample	Average activation energy/ kJmol⁻¹
Coal	90.9
Coal-20% hazelnut shell	95.0
Coal-40% hazelnut shell	103.7
Coal-50% hazelnut shell	167.1
Hazelnut shell	215.3

Table 4. Reaction order (*n*) as a function of temperature

Temperature/K	Coal	Coal-20% hazelnut shell	Coal-40% hazelnut shell	Coal-50% hazelnut shell	Hazelnut shell
673	0.21	0.25	0.31	0.10	0.20
723	0.31	0.36	0.34	0.16	0.18
773	0.38	0.39	0.39	0.24	0.40
Average <i>n</i>	0.30	0.33	0.35	0.17	0.17

Conclusions

Hazelnut shell and Beypazari lignite are significant energy sources in Turkey, and blending of these two samples may provide a way to compensate negative effects of each other. The addition of hazelnut shell into coal affected the combustion system in such a way that more mass loss was clearly observed compared to the combustion of coal alone. Furthermore, comprehensible thermal decomposition differences were observed during the combustion of coal and coal/hazelnut shell blends. In general: (1) the thermal degradation temperature of coal is higher than that of blended coal samples due to molecular structure strength; (2) increasing the heating rate resulted in more pronounced heat transfer limitations that caused the combustion to complete at higher temperatures; (3) as blending ratio increases, residual mass decreases. The kinetic analyses demonstrated that the activation energy and reaction order changes in

1 the range of 90.9–215.3 kJ mol⁻¹ and 0.17–0.40, respectively, depending on blending
2 ratio. Among the tested blends, the 20 mass % blend indicated the lowest activation
3 energy (95.0 kJ mol⁻¹). TG analysis allowed ascertaining that differences between
4 coal and hazelnut shell combustion were significant and the feasible combustion
5 could be achieved with the lower hazelnut shell mass % blends. The present study
6 showed the combustion kinetics of coal/hazelnut shell blends that might be very
7 useful before planning their large-scale incineration. However, the kinetic parameters
8 achieved in this work obtained from reaction rates only by considering temperature,
9 regardless of mass transfer, therefore specific combustion operation parameters
10 should be further studied for a combustion reactor.
11
12
13
14
15
16
17
18
19
20
21

22 **References**

- 23
24 [1] Yi Q, Qi F, Cheng G, Zhang Y, Xiao B, Hu Z, Liu S, Cai H, Xu S.
25 Thermogravimetric analysis of co-combustion of biomass and biochar. *J Therm Anal*
26 *Calorim* 2013;112:1475-9.
27
28 [2] Dumanlı AG, Tas S, Yürüm Y. Co-firing of biomass with coals. Part1.
29 Thermogravimetric kinetic analysis of combustion of fir (*abies bornmulleriana*) wood,
30 *J Therm Anal Calorim*. 2011;103:925-33.
31
32 [3] Quanrum L, Haoquan H, Qiang Z, Shengwei Z, Gouohua C. Effect of inorganic
33 matter on reactivity and kinetics of coal pyrolysis. *Fuel*. 2004;83:713–8.
34
35 [4] Mianowski A, Bigda R, Zymła V. Study on kinetics of combustion of brick-
36 shaped carbonaceous materials. *J Therm Anal Calorim*.2006;84:563–74.
37
38 [5] Franceschi E, Cascone I, Nole D. Thermal, XRD and spectrophotometric study on
39 artificially degraded woods. *J Therm Anal Calorim*. 2008;91:119–25.
40
41 [6] Xu Q, Griffin GJ, Jiang Y, Preston C, Bicknell AD GP, Bradbury GP, White N.
42 Study of burning behavior of small scale wood crib with cone calorimeter. *J Therm*
43 *Anal Calorim*. 2008;91:787–90.
44
45 [7] Yu LJ, Wang S, Jiang XM, Wang N, Zhang CQ. Thermal analysis studies on
46 combustion characteristics of seaweed. *J Therm Anal Calorim*. 2008;93:611–7.
47
48 [8] Suarez AC, Tancredi N, Cesar P, Pinheiro C, Yoshida MI. Thermal analysis of the
49 combustion of charcoals from *Eucalyptus dunnii* obtained at different pyrolysis
50 temperatures. *J Therm Anal Calorim*. 2010;100:1051–4.
51
52
53
54
55
56
57
58
59
60
61
62
63
64
65

- 1
2 [9] Ndiema CKW, Manga PN, Rutttoh CR. Influence of die pressure on relaxation
3 characteristics of briquetted biomass. *Energy Convers Manag.* 2002;43:2157–61.
4 [10] Wang C, Wang F, Yang Q, Liang R. Thermogravimetric studies of the behavior
5 of wheat straw with added coal during combustion. *Biomass Bioenerg.* 2009;33:50–6.
6 [11] Biagini E, Barontini F, Tognotti L. Devolatilization of biomass fuels and biomass
7 components studied by TG/FTIR technique. *Ind Eng Chem Res.* 2006;45:4486–93.
8 [12] Tas S, Yürüm Y. Co-firing of biomass with coals. Part 2. Thermogravimetric
9 kinetic analysis of co-combustion of fir (*Abies bornmulleriana*) wood with Beypazari
10 lignite. *J Therm Anal Calorim.* 2012;107:293-8.
11 [13] Yorulmaz SY, Atimtay AT. Investigation of combustion kinetics of treated and
12 untreated waste wood samples with thermogravimetric analysis. *Fuel. Process*
13 *Technol.* 2009;90:939–46.
14 [14] Barneto AG, Carmona JA, Alfonso JEM, Blanco JD. Kinetic models based in
15 biomass components for the combustion and pyrolysis of sewage sludge and its
16 compost. *J Anal Appl Pyrolysis.* 2009;86:108–14.
17 [15] Demirbaş, A. Properties of charcoal derived from hazelnut shell and the
18 production of briquettes using pyrolytic oil. *Energy.* 1999;24:141-50.
19 [16] Ozawa TA. A new method of analyzing thermodynamic data. *Bull Chem Soc.*
20 1965;38:1881–6.
21 [17] Flynn JH, Wall LA. Structures and thermal analysis of 1,1,6,6- tetraphenylhexa-
22 2,4-diyne-1,6-diol. *Therm Anal.* 1966;4: 323–8.
23 [18] Doyle CD. Estimating isothermal life from thermogravimetric data. *J Appl*
24 *Polym Sci.* 1962;6:639–42.
25 [19] Avrami MJ. Kinetics of phase change. I. General theory. *Chem Phys.*
26 1939;7:1103–12.
27 [20] Avrami MJ. Kinetics of phase change II. Transformation-time relations for
28 random distribution of nuclei. *Chem Phys.* 1940;8:212–24.
29 [21] Avrami MJ. Kinetics of phase change III. Granulation, phase change, and
30 microstructure. *Chem Phys.* 1941;9:177–84.
31 [23] Flynn JH, Wall LA. A general treatment of the termogravimetry of polymers. *J*
32 *Res Nat Bur Stand.* 1966;70A:487–523.
33 [24] Ozawa T. Kinetic analysis of derivative curves in thermal analysis. *Therm Anal.*
34 1970;2:301–24.
35
36
37
38
39
40
41
42
43
44
45
46
47
48
49
50
51
52
53
54
55
56
57
58
59
60
61
62
63
64
65

- 1
2
3
4
5
6
7
8
9
10
11
12
13
14
15
16
17
18
19
20
21
22
23
24
25
26
27
28
29
30
31
32
33
34
35
36
37
38
39
- [25] Demirbaş A. Combustion characteristics of different biomass fuels. Prog. Energy Combust Sci. 2004;30:219-230.
- [26] Bakisgan C, Dumanli AG, Yürüm Y, Trace elements in Turkish biomass fuels: Ashes of wheat straw, olive bagasse and hazelnut shell. Fuel. 2009;88: 1842-51.
- [27] Demirbaş A. Calculation of higher heating values of biomass fuels. Fuel. 1997; 76:431-4.
- [28] Siti SI, Norazah AR, Khudzir I. Combustion characteristics of Malaysian oil palm biomass, sub-bituminous coal and their respective blends via thermogravimetric analysis (TGA). Bioresour Technol.2012; 123: 581–91.
- [29] Gil MV, Casal D, Pevida C, Pis JJ, Rubiera F. Thermal behaviour and kinetics of coal/biomass blends during co-combustion. Bioresour. Technol. 2010; 101:5601–8.
- [30] Ramajo-Escalera B, Espina A, García JR, Sosa-Arno JH, Nebra SA. Model-free kinetics applied to sugarcane bagasse combustion. Thermochim Acta.2006;448:111-6.
- [31] A.R. Silva, M.S. Crespi, C.A. Ribeiro, S.C. Oliveira, M.R.S. Silva. Kinetic of thermal decomposition of residues from different kinds of composting. J Therm Anal Calorim.2004;75:401-9.
- [32] Sanchez ME, Otero M, Gomez X, Moran A. Thermogravimetric kinetic analysis of the combustion of biowastes. Renew Energ. 2009;34:1622–7.

40
41

Figure Captions:

42
43
44

Fig. 1. SEM micrographs of (a) hazelnut shells (b) residue of fired hazelnut shell at 1173 K.

45
46
47
48

Fig. 2. TG curves of the combustion of coal, hazelnut shell, and hazelnut shell blended coal samples at different heating rates (β).

49
50
51
52
53

Fig. 3. Curves indicating the kinetic model proposed by Ozawa-Flynn-Wall to various conversion percentages corresponding to the combustion of coal, hazelnut shell, and hazelnut shell blended coal.

54
55
56
57
58
59

Fig. 4. Curves indicating the reaction order n for 673 K, 723 K, and 773 K along the combustion of coal, hazelnut shell, and hazelnut shell blended coal at different heating rates.

Figure 1.a
[Click here to download high resolution image](#)



Figure 1.b
[Click here to download high resolution image](#)

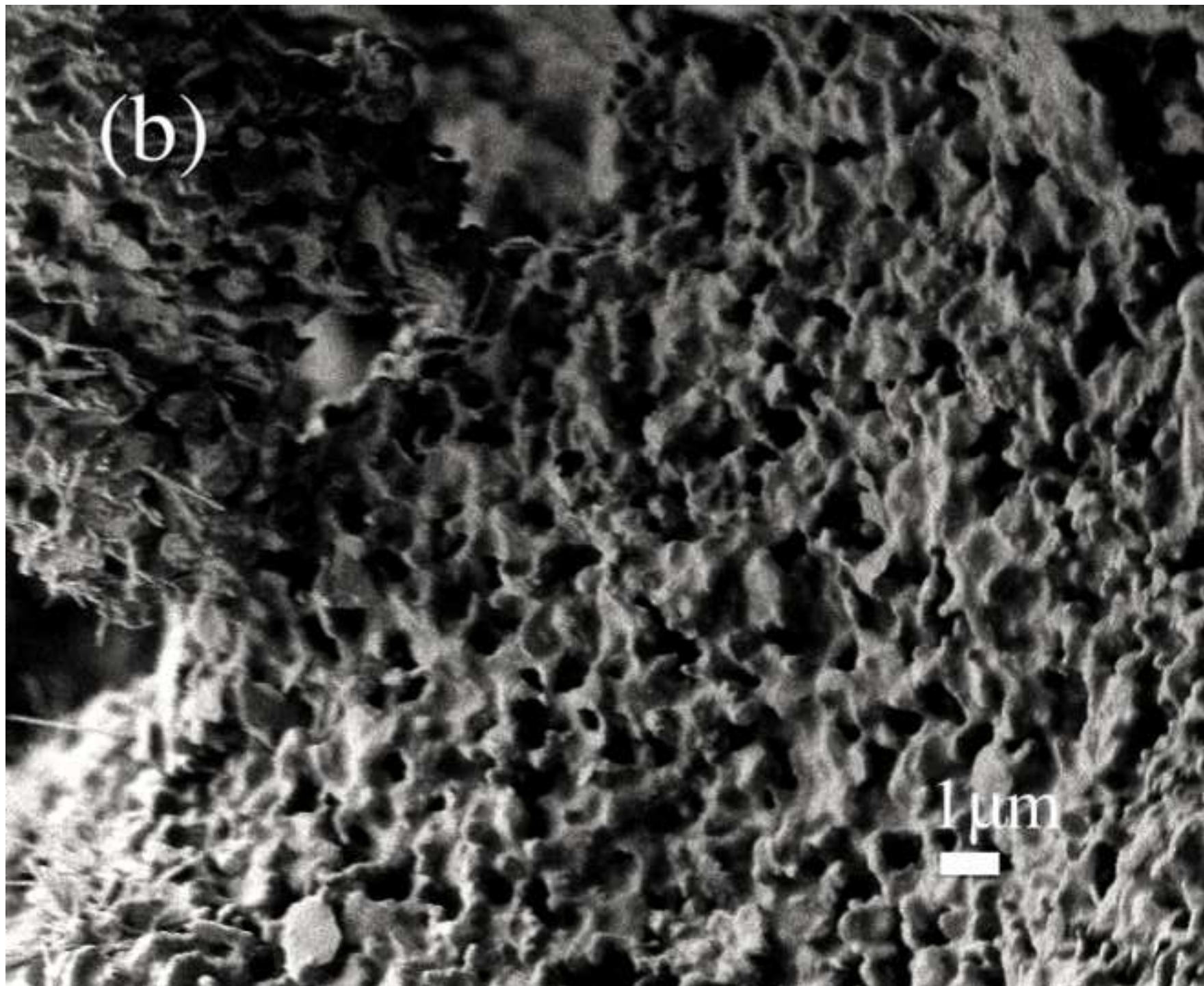


Figure 2
[Click here to download high resolution image](#)

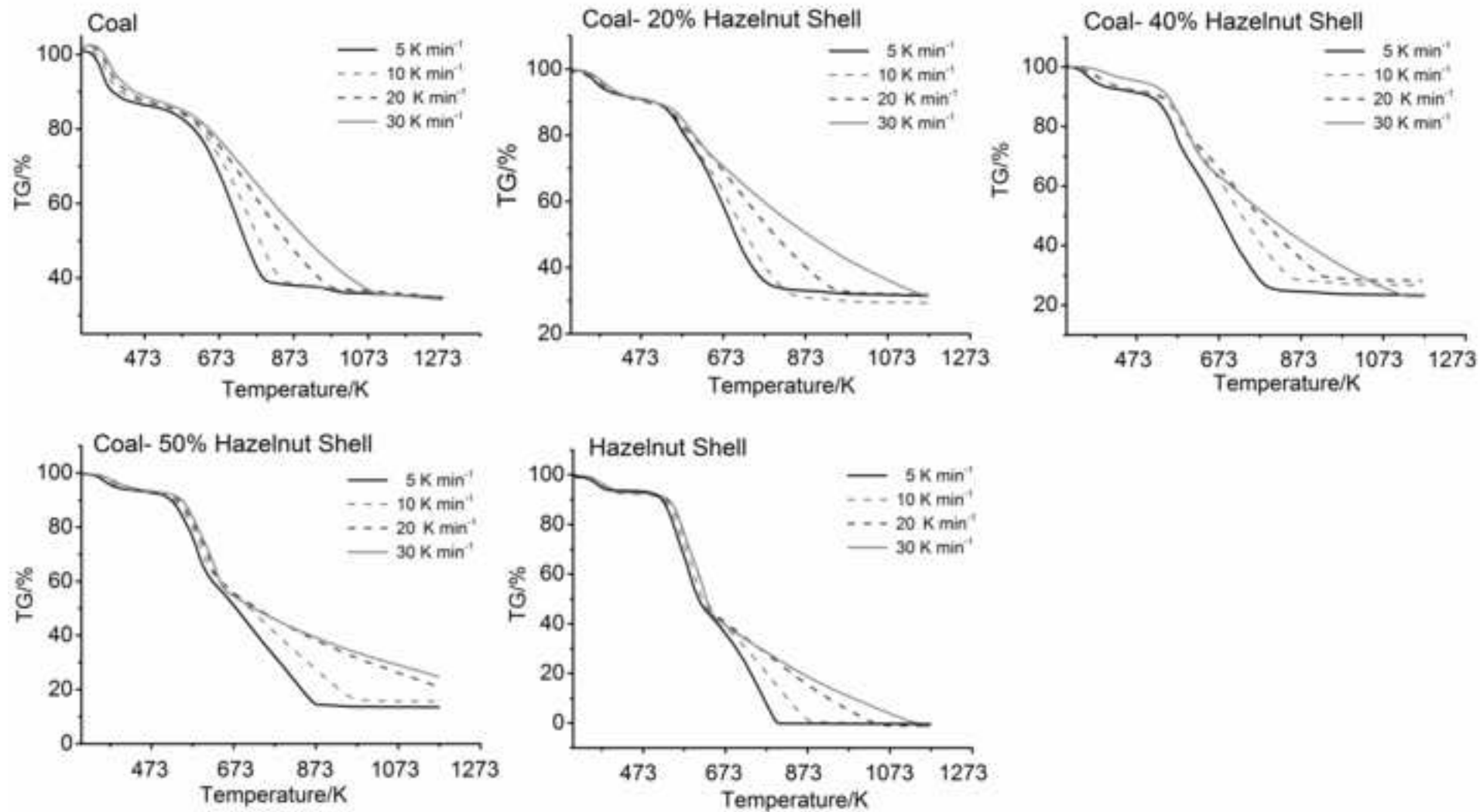


Figure 3
[Click here to download high resolution image](#)

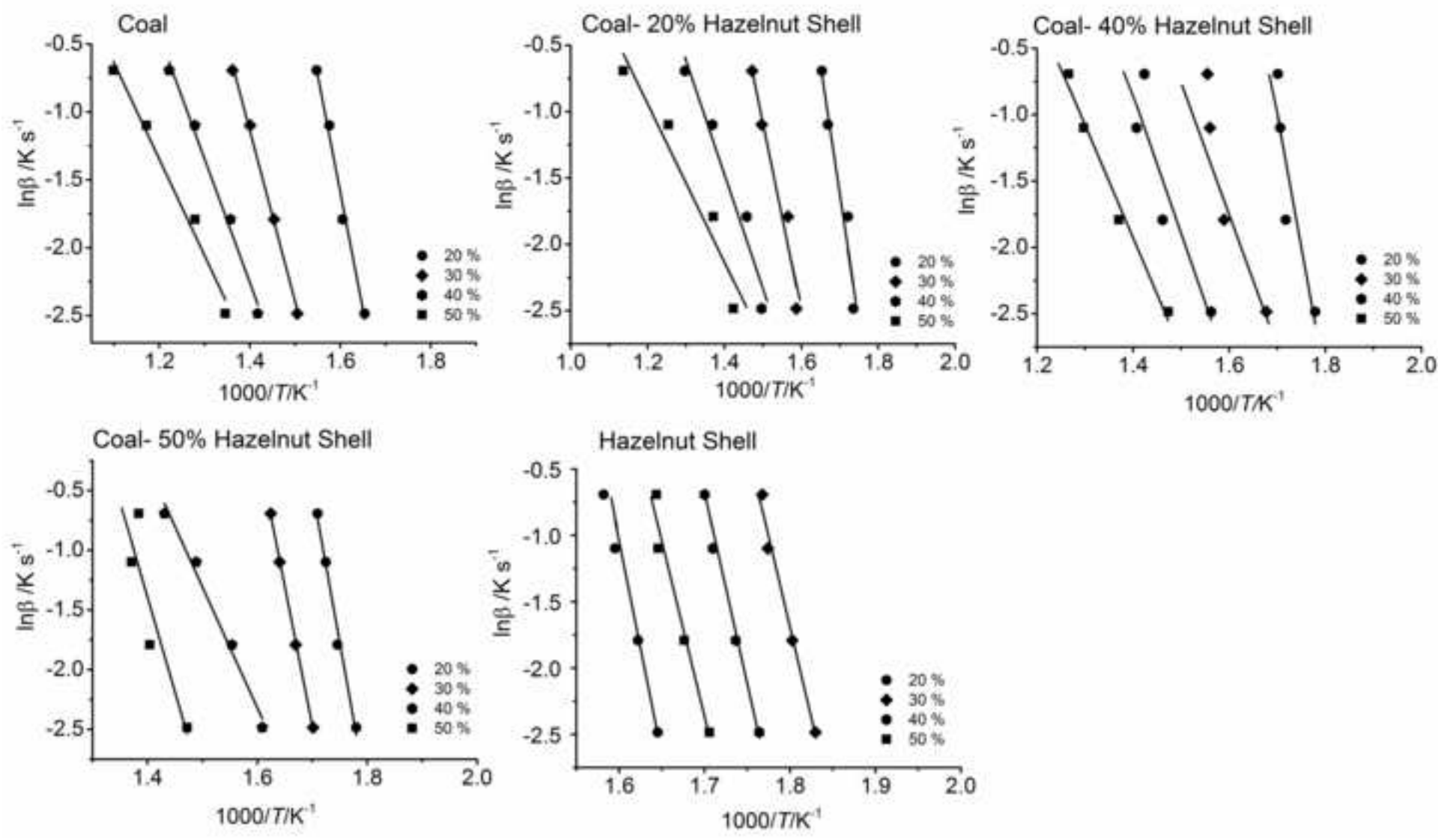
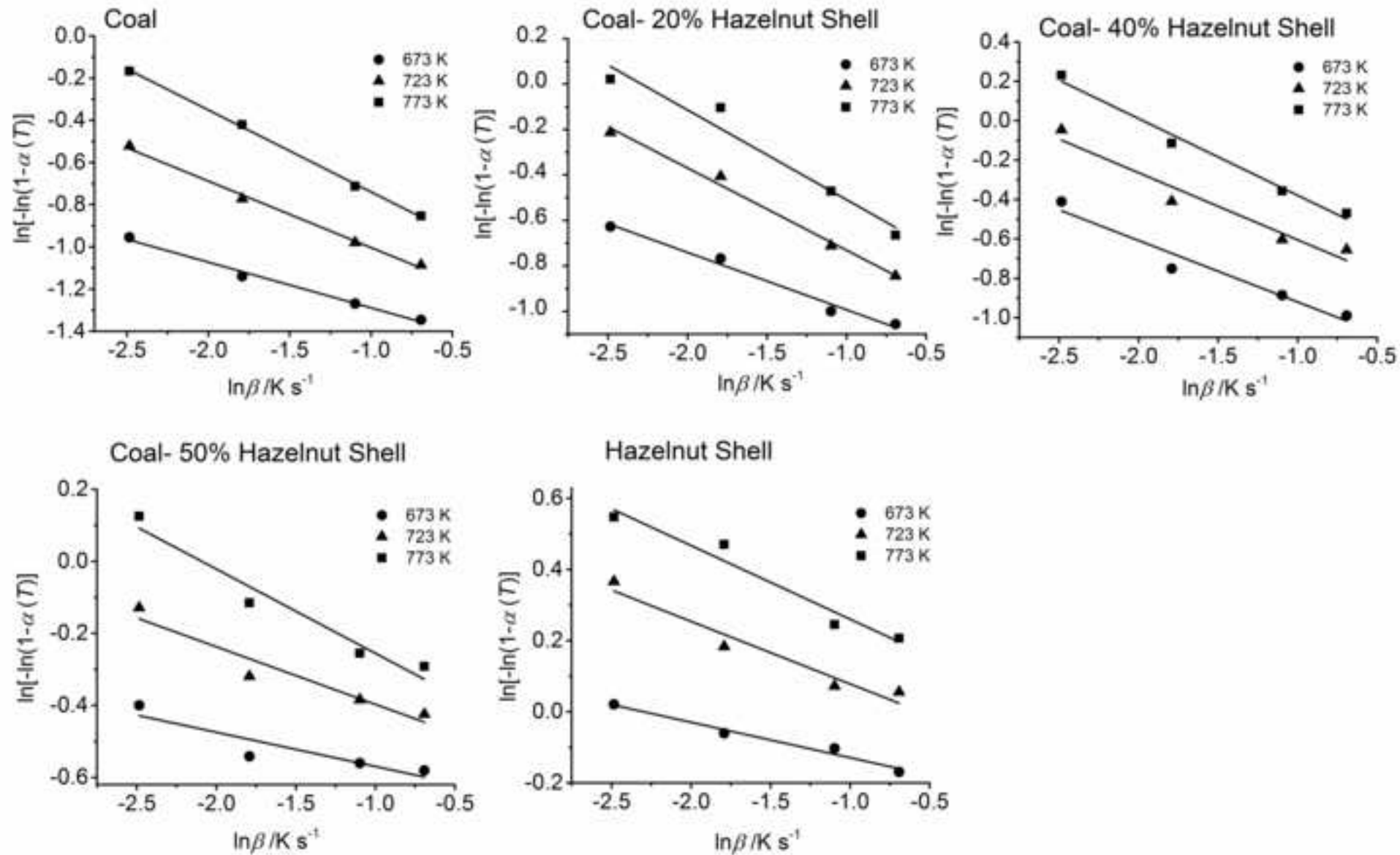


Figure 4
[Click here to download high resolution image](#)



Copyright Transfer Statement

Publisher: Akadémiai Kiadó Zrt., Budapest, Hungary

The signed Copyright Transfer Statement please return to:
<http://www.editorialmanager.com/jfac>

Author Name: Yuda Yürüm
Address: Sabanci University Tuzla, Istanbul, Turkey
E-mail address: yguzum@sabanciuniv.edu

Article Information

Title: Combustion Characteristics of Turkish hazelnut shell biomass lignite coal and
Journal title: Journal of Thermal Analysis and Calorimetry their respective blends via thermogravimetric
Co-authors: Zileyla Ozen, Lokman Hakkı, Firuze Okyay Öner
analysis

I. Transfer of copyright

By execution of the present Statement Author transfers copyright and assigns exclusively to Publisher all rights, title and interest that Author may have (for the extent transferable) in and to the Article and any revisions or versions thereof, including but not limited to the sole right to print, publish and sell the Article worldwide in all languages and media. Transfer of the above rights is referred to as those of the final and published version of the Article but does not restrict Author to self-archive the preprint version of his/her paper (see Section III).

II. Rights and obligations of Publisher

The Publisher's rights to the Article shall especially include, but shall not be limited to:

- well as the co-publisher's website, www.Springerlink.com (outside of Hungary) or any other electronic format or means of electronic distribution provided by or through Akadémiai Kiadó or Springer from time to time, selling the Article world-wide (through subscriptions, Pay-per-View, single archive sale, etc.)
- transforming to and selling the Article through any electronic format
- publishing the Article in the printed Journals as listed on the official Website of Publisher
- transferring the copyright and the right of use of the Article onto any third party
- translating the Article
- taking measures on behalf of the Author against infringement, inappropriate use of the Article, libel or plagiarism.

Publisher agrees to send the text of the Article to the e-mail address of Author indicated in the present Statement for preview before the first publishing either in paper and/or electronic format (Proof). Author shall return the corrected text of the Article within 2 days to the Publisher. Author shall, however, not make any change to the content of the Article during the First Proof preview.

III. Rights and obligations of Author

The Author declares and warrants that he/she is the exclusive author of the Article – or has the right to represent all co-authors of the Article (see Section IV) – and has not granted any exclusive or non-exclusive right to the Article to any third party prior to the execution of the present Statement and has the right therefore to enter into the present Statement and entitle the Publisher the use of the Article subject to the present Statement. By executing the present Statement Author confirms that the Article is free of plagiarism, and that Author has exercised reasonable care to ensure that it is accurate and, to the best of Author's knowledge, does not contain anything which is libelous, or obscene, or infringes on anyone's copyright, right of privacy, or other rights. The Author expressly acknowledges and accepts that he/she shall be entitled to no royalty (or any other fee) related to any use of the Article subject to the present Statement. The Author further accepts that he/she will not be entitled to dispose of the copyright of the final, published version of the Article or make use of this version of the Article in any manner after the execution of the present Statement. The Author is entitled, however, to self-archive the preprint version of his/her manuscript. The preprint version is the Author's manuscript or the galley proof or the Author's manuscript along with the corrections made in the course of the peer review process. The Author's right to self-archive is irrespective of the format of the preprint (.doc, .tex, .pdf) version and self-archiving includes the free circulation of this file via e-mail or publication of this preprint on the Author's webpage or on the Author's institutional repository with open or restricted access. When self-archiving a paper the Author should clearly declare that the archived file is not the final published version of the paper, he/she should quote the correct citation and enclose a link to the published paper (<http://dx.doi.org/DOI> of the Article without brackets).

IV. Use of third party content as part of the Article

When not indicating any co-authors in the present Statement Author confirms that he/she is the exclusive author of the Article. When indicating co-authors in the present Statement Author declares and warrants that all co-authors have been listed and Author has the exclusive and unlimited right to represent all the co-authors of the Article and to enter into the present Statement on their behalf and as a consequence all declarations made by Author in the present Statement are made in the name of the co-authors as well. Author also confirms that he/she shall hold Publisher harmless of all third-party claims in connection to non-authorized use of the Article by Publisher. Should Author wish to reuse material sourced from third parties such as other copyright holders, publishers, authors, etc. as part of the Article, Author bears responsibility for acquiring and clearing of the third party permissions for such use before submitting the Article to the Publisher for acceptance. Author shall hold Publisher harmless from all third party claims in connection to the unauthorized use of any material under legal protection forming a part of the Article.

V. Other provisions

Subject to the present Statement the Article shall be deemed as first published within the Area of the Hungarian Republic. Therefore the provisions of the Hungarian law, especially the provisions of Act LXXVI of 1999 on Copy Rights shall apply to the rights of the Parties with respect to the Article. For any disputes arising from or in connection with the present Statement Parties agree in the exclusive competence of the Central District Court of Pest or the Capital Court of Budapest respectively.

Yuda Yürüm
Author

[Signature]
Signature

30.07.2014, Turkey
Date and Place