



# Integrating a glacier retreat model into a hydrological model – Case studies of three glacierised catchments in Norway and Himalayan region



Hong Li<sup>a</sup>, Stein Beldring<sup>b</sup>, C.-Y. Xu<sup>a,\*</sup>, Matthias Huss<sup>c,d</sup>, Kjetil Melvold<sup>b</sup>, Sharad K. Jain<sup>e</sup>

<sup>a</sup> Department of Geosciences, University of Oslo, Norway

<sup>b</sup> Norwegian Water Resources and Energy Directorate, Norway

<sup>c</sup> Department of Geosciences, University of Fribourg, Switzerland

<sup>d</sup> Laboratory of Hydraulics, Hydrology and Glaciology, ETH Zurich, Switzerland

<sup>e</sup> National Institute of Hydrology, Roorkee, India

## ARTICLE INFO

### Article history:

Received 16 December 2014

Received in revised form 8 May 2015

Accepted 10 May 2015

Available online 19 May 2015

This manuscript was handled by Konstantine P. Georgakakos, Editor-in-Chief, with the assistance of Daqing Yang, Associate Editor

### Keywords:

Himalaya

Glaciers

Glacier retreat model

HBV

Norway

## SUMMARY

Glaciers are crucial in many countries where meltwater from glaciers is an important source of water for drinking water supply, irrigation, hydropower generation and the ecological system. Glaciers are also important indicators of climate change. They have been significantly altered due to the global warming and have subsequently affected the regional hydrological regime. However, few models are able to parameterise the dynamics of the glacier system and consequent runoff processes in glacier fed basins with desirable performance measures. To narrow this gap, we have developed an integrated approach by coupling a hydrological model (HBV) and a glacier retreat model ( $\Delta h$ -parameterisation) and tested this approach in three basins with different glacier coverage and subject to different climate and hydrologic regimes. Results show that the coupled model is able to give satisfactory estimations of runoff and glacier mass balance in the Nigardsbreen basin where the measured data are available to verify the results. In addition, the model can provide maps of snowpack distribution and estimate runoff components from glaciers.

© 2015 The Authors. Published by Elsevier B.V. This is an open access article under the CC BY license (<http://creativecommons.org/licenses/by/4.0/>).

## 1. Introduction

Glaciers are essential in the water system. They store about 75% of the fresh water on the earth. Approximately 99.5% of the ice volume store in ice sheets and the remaining 0.5% in mountain glaciers (Khadka et al., 2014). Although the mountain glaciers are relatively small, they are critically important to the humanity (Beniston, 2003; Arora et al., 2014). Firstly, mountain glaciers are relevant to humankind because of their proximity to populated areas (Singh et al., 2006). During 14th to 19th century, a period known as the Little Ice Age, advancing glaciers periodically extended down into valleys and destroyed communities, crops, and livelihoods (Carey, 2007). Glacier recession also induces a series of natural hazards (Carey, 2005). Secondly, mountain glaciers indeed substantially contribute to the development of society and economy (Beniston, 2003). For example, glaciers only cover

approximately 1% area of mainland Norway. However, 15% of its electricity is generated by runoff from these glacierised basins (Andreassen et al., 2005). Thirdly, glacier meltwater is an important water resource (Burlando et al., 2002) and a supplement to streamflow under drought conditions (Marshall, 2014).

Furthermore, glaciers are considered as one of the most sensitive indicators of climate change (Burlando et al., 2002). That is because runoff from a glacierised basin is more dependent on the available energy than from a non-glacierised basin. Therefore, a modification of the prevalent climate, particularly of air temperature, can considerably affect the hydrologic regime (Burlando et al., 2002; Radić and Hock, 2014).

Glacier responses to climate change are of concern for both scientific research and public communities (Hagg et al., 2007; Barnett et al., 2005). In many regions of the earth, glaciers are retreating and seasonal snowfalls are diminishing as shown by observations and modelling (Bolch et al., 2012; Barnett et al., 2005). Zemp et al. (2008) reported that the global average annual mass was  $-0.58$  m water equivalent (w.e.)  $\text{year}^{-1}$  for the decade 1996–2005. Assuming a minor change in precipitation, ice- and

\* Corresponding author.

E-mail address: [c.y.xu@geo.uio.no](mailto:c.y.xu@geo.uio.no) (C.-Y. Xu).

<http://dx.doi.org/10.1016/j.jhydrol.2015.05.017>

0022-1694/© 2015 The Authors. Published by Elsevier B.V.

This is an open access article under the CC BY license (<http://creativecommons.org/licenses/by/4.0/>).

snow-covered areas are predicted to decrease at accelerating rates due to increased melting of snowpack and ice as well as due to reduced accumulation of snow and decreased surface albedo (Radić and Hock, 2014). The expected climate change and its serious implications demand interdisciplinary research on different topics including glaciers.

The response of glaciers to global warming is generally stated as: due to the release of water from glacial storage, runoff initially increases especially during late spring and summer, and after complete removal of the glacier ice, runoff stabilizes and drops below the previous level (Huss et al., 2008). Theoretically, the total amount of runoff cannot be changed by the disappearance of glaciers compared to stable glacier conditions. However, changes in seasonal distribution of runoff have significant impacts on water availability, ecosystems and human well-being (Jain et al., 2011).

The inhomogeneity among mountain glaciers, however, makes this generalisation not applicable for all glaciers (Jain et al., 2011). This inhomogeneity is significant among different climate regimes, even among the glaciers in a close neighbourhood (Horton et al., 2006). The rate of glacier retreat depends on both large-scale and time-invariant factors, and small-scale and time-dependent factors (Burlando et al., 2002; Khadka et al., 2014). Geographical, topographical and climatic conditions act at large scales and relatively stable, whereas the size, location of glaciers and study period of research are at a small spatial scale and time dependent (Bolch, 2007; Marshall, 2014).

The processes of melt water from glaciers draining to the catchment outlet are very complex. Glaciologists and hydrologists have made many efforts to describe and model them by employing glaciological methods and hydrological methods or by integrated knowledge. The methods used can be categorised into three types: glaciological, hydrological and interdisciplinary approaches.

From a glaciological point of view, it is essential to simulate response of glaciers to climate change and contribution to streamflow by glacier wastage. This approach mainly uses models to relate meteorological measurements to accumulation and ablation rates on the glacier surface. These mass balance models vary in complexity, including conceptual models and or more complicated models based on the energy balance (Gottlieb, 1980; Arnold et al., 1996; Klok and Oerlemans, 2002; Hock, 2005) and models for ice dynamics (Greuell, 1992; Hubbard et al., 1998; Juvet et al., 2009). They have been validated by in-situ glacier measurements, such as surface mass balance or ice thickness change. Then glacier mass loss can be compared with discharge downstream of the glacier (Kotlarski et al., 2010). However, glacier melt water is only a raw volume input into the hydrological system, similar to rainfall. The discharge is further modified by, e.g. evaporation and groundwater storage. Therefore, the direct comparison leads to an overestimation of glacier contribution to discharge (Kaser et al., 2010), unless contributions from non-glacierised areas are also considered.

Many diverse approaches have been used in developing hydrological models for a better representation of snow processes and ice melting (Bergström, 1976; Shrestha et al., 2012; Wrede et al., 2013). The models mainly use the meteorological data, satellite data of snow cover and climate scenarios to study effects of climate change on glaciers (Khadka et al., 2014; Jasper et al., 2004). Among the models, the Snowmelt Runoff Model (SRM) (Khadka et al., 2014; Immerzeel et al., 2009) and the HBV model (Mayr et al., 2013; Hagg et al., 2006; Akhtar et al., 2008) are widely used. However, these studies did not take into account the change in the glacier area to the imposed climatic changes. Although these studies provide valuable insights into the possible range of the future options, they suffer from a large uncertainty about the plausibility of the future evolution of glaciers (Immerzeel et al., 2012). This limits the time scale over which the results could apply.

Several studies using the HBV model considered the retreat of glaciers (Hagg et al., 2006; Akhtar et al., 2008) but, since the change of glacier extent were arbitrarily assigned, they can be considered as rather simple and non-dynamic experiments not allowing to account for the transient evolution.

The coupled models with both descriptions of glacier and hydrology are quite new. Several of such models have been reported to link glacier dynamics and hydrological processes. Horton et al. (2006) studied the climate change impacts on the runoff regimes in the Swiss Alps by a conceptual reservoir-based hydrological model. The glacier extent was updated by a conceptual model based on the accumulation area ratio (AAR) method, which assumes that the accumulation area of a glacier occupies a fixed proportion of the total glacier area. However, the AAR method is not able to reproduce the transient response of glaciers to a changing climate as it assumes the glacier to be permanently in steady-state (Huss et al., 2008). Huss et al. (2008) ran a distributed model to simulate the daily surface mass balance on three highly glacierised catchments in Switzerland. The model included the water balance calculation and a parameterisation of glacier retreat. The model was validated with monthly runoff and decadal ice volume change. Stahl et al. (2008) proposed and applied a methodology for estimating changes in streamflow associated with the coupled effects of climatic change and associated glacier response, with a specific focus on transient responses. The authors combined the HBV model with a model of the glacier area evolution based on volume-area scaling. However, as shown by Lüthi (2009) and Radić and Hock (2014), volume-area scaling cannot describe a critical time lag between the area and the volume response to the prevailing climate. Immerzeel et al. (2012) suggested a combined approach consisting of a simple precipitation-runoff model and an ice dynamics model including basal sliding for a glacierised Himalayan catchment in Nepal. The model was first calibrated using the recent location of the glacier terminus and then by using discharge observations. Naz et al. (2014) published a physically-based, spatially distributed hydrological model coupled to a shallow ice dynamics model. A common drawback of the currently available physically-based models is a high demand of input data and computational power, which hampers their applicability to large-scale catchments.

This paper aims at presenting a coupled model for hydrology and glacier retreat suitable for large catchments with low data demand. The combined model explicitly simulates glacier evolution and major hydrological processes at a high spatial resolution.

## 2. Methodology

The general framework is to couple a distributed HBV model with a mass-conserving glacier retreat model. The HBV model calculates the accumulation and ablation of snow and glacier ice for every grid at a daily time step and the glacier retreat model describes glacier surface elevation changes and updates glacier area in response to the total amount of glacier mass change calculated by the HBV model.

### 2.1. Hydrological model

The HBV model concept was initially developed for runoff simulation in the Scandinavian countries in the 1970s (Bergström, 1976). So far, the HBV model has been applied in more than 80 countries and is used as a standard tool for flood forecasting and for simulating inflow to hydropower reservoirs in Norway as well as many other European areas. The scientific basis and applicability of the model have been verified at many sites in Europe (Uhlenbrook et al., 1999; Göttinger and Bárdossy, 2005;

Hailegeorgis and Alfredsen, in press) and Asia (Akhtar et al., 2008; Li et al., 2014b). The algorithms have been described in details (e.g., Bergström, 1976; Lindström et al., 1997; Beldring et al., 2003); therefore, we present here only the equations of special significance to our research.

The model version used in this study was first published by Beldring et al. (2003). It is a distributed model considering the spatial distribution of meteorological data at a daily time step. The main inputs are precipitation, temperature and surface elevation. The station precipitation is firstly corrected for under catch (Eq. (1)). Then the corrected precipitation and air temperature series are interpolated for every grid using the inverse distance weighting (IDW) method considering elevation effects (Eq. (2)). Finally water balance is computed by the HBV algorithms for every grid.

$$P_c = \begin{cases} K_r \cdot P_o & \text{if rainfall} \\ K_s \cdot K_r \cdot P_o & \text{if snowfall} \end{cases} \quad (1)$$

where  $P_c$  is corrected precipitation ( $\text{mm day}^{-1}$ ) and  $P_o$  is precipitation measured at the weather station ( $\text{mm day}^{-1}$ ).  $K_r$  and  $K_s$  are free parameters respectively for rainfall and snowfall correction.

$$P_g = \sum_{i=1}^n W_i \cdot P_i \cdot \gamma_p^{(H_g - H_i)/100} \quad (2)$$

$$T_g = \sum_{i=1}^n W_i \cdot \left( T_i + \gamma_t \times \frac{H_g - H_i}{100} \right)$$

where  $P_g$  and  $T_g$  are precipitation ( $\text{mm day}^{-1}$ ) and temperature ( $^{\circ}\text{C}$ ) at each grid.  $W_i$  is the weight of station  $i$  calculated by the IDW method.  $H_g$  and  $H_i$  are the elevations in meters above mean sea level (m amsl) of grid and station  $i$ .  $n$  is the number of stations used for interpolation.  $\gamma_t$  ( $^{\circ}\text{C per 100 m}$ ) and  $\gamma_p$  are free parameters that describe elevation effects on temperature and precipitation, respectively.

Snow accumulates when the air temperature is below the threshold temperature of snow accumulation ( $T_{acc}$ ,  $^{\circ}\text{C}$ ) and there is precipitation. Snow melting is calculated by a degree-day method based on temperature according to Eq. (3) (Lindström et al., 1997). Glacier melting starts when there is no snow coverage and the air temperature is higher than the melting threshold temperature ( $T_t$ ). The melting rate of ice ( $Melt_{ice}$ ) is based on the same method, but another melting factor ( $MF_{ice}$ ) as shown in Eq. (4). At the end of melting season (i.e. 31st August) existing snow on the glacier is transformed into ice, and then the glacier gains mass.

$$Melt_{snow} = MF_{snow} \cdot (T - T_t) \quad T > T_t \quad (3)$$

$$Melt_{ice} = MF_{ice} \cdot (T - T_t) \quad T > T_t \quad (4)$$

where  $T$  is air temperature ( $^{\circ}\text{C}$ ) and  $T_t$  is the threshold temperature of snow melting;  $Melt_{snow}$  and  $Melt_{ice}$  are melting rate of snow and glacier ( $\text{m day}^{-1}$ ) obtained with the degree-day factors  $MF_{snow}$  and  $MF_{ice}$ , respectively (both in  $\text{m day}^{-1} \text{ } ^{\circ}\text{C}^{-1}$ ).

## 2.2. Glacier retreat model

The  $\Delta h$ -parameterisation for modelling the changes in surface elevation and extent for retreating glaciers owes its origin to varying thinning rates over a glacier (Huss et al., 2010). For a certain mass change, surface elevation changes are smallest in the accumulation area and the largest near the terminus of mountain glaciers. This has been confirmed by measurements (Arendt et al., 2002; Bauder et al., 2007) and numerical modelling (Jóhannesson et al., 1989). The  $\Delta h$ -parameterisation describes the surface elevation changes as a function of elevation and the ice volume change, as Eq. (5).

$$h_r = \frac{h_{\max} - h}{h_{\max} - h_{\min}} \quad (5)$$

$$\Delta h = (h_r + a)^7 + b \cdot (h_r + a) + c$$

where  $h$  is the glacier surface elevation (m amsl);  $h_{\max}$  and  $h_{\min}$  are the maximum and minimum elevations (both in m amsl);  $h_r$  is the normalised elevation;  $\Delta h$  is the normalised surface elevation change.  $\gamma$ ,  $a$ ,  $b$  and  $c$  are parameters and their values can be derived from glacier surface maps of different years, or calibration (Huss et al., 2010).

Integration of the dimensionless  $\Delta h$  function (Eq. (5)) over the entire glacier, taking into account the area distribution and the ice density  $\rho_{ice}$  ( $900 \text{ kg m}^{-3}$ ) must equal the total glacier mass change  $B_a$  (kg) calculated by the HBV model in a given time interval:

$$B_a = f_s \cdot \rho_{ice} \cdot \sum_{i=1}^n A_i \cdot \Delta h_i \quad (6)$$

where  $\Delta h_i$  is the normalised elevation change of grid  $i$ ;  $A_i$  is its area ( $\text{m}^2$ );  $n$  is the number of glacier grids. Further,  $f_s$  is a factor that scales the magnitude of the dimensionless ice thickness change. It is chosen for each time interval such that Eq. (6) is satisfied. Then the glacier surface is changed as:

$$h_1 = h_0 + f_s \cdot \Delta h_i \quad (7)$$

where  $h_0$  is the elevation (m amsl) in the previous time step and  $h_1$  is the updated elevation (m amsl). In the last step, the change in glacier extent is determined by the updated glacier surface elevation. The glacier disappears for grids where the thickness is not greater than zero.

The required inputs are the initial ice thickness and surface elevation. The algorithm runs for individual glaciers, but all glaciers in a basin share the same values of the parameters. In this research, the glacier flow sheds are constructed from the surface elevation according to the D8 (deterministic eight-node) algorithms (O'Callaghan and Mark, 1984) and the grids having the same terminus point belong to one glacier. Glacier area has a slower climate response than runoff (Lüthi, 2009). Therefore, glacier extent is updated at a yearly scale, at the end of every melting season, i.e. 31st August.

The  $\Delta h$ -parameterisation avoids high demand of field data and computation resources such as an ice dynamics model (Jouvet et al., 2009) and can provide similar estimates as a 3D finite element ice flow model as shown by Huss et al. (2010).

## 2.3. Calibration and criteria

The combined model is calibrated by a model independent calibration package (PEST). PEST is available for free download (Doherty, 2005) and has been widely used in environmental and hydrological modelling (Doherty and Johnston, 2003; Immerzeel et al., 2012; Li et al., 2014a). The objective function is to obtain the minimum of a weighted least square sum of the discrepancies between simulated and observed series, i.e. daily discharge ( $\text{m}^3 \text{ s}^{-1}$ ) and if available, glacier annual mass balance ( $\text{m year}^{-1}$ ) where the weight of an annual mass balance value is assumed 10,000 times of a discharge value. When glacier data are not available, the sum of the discharge series is additionally used to control the volume error.

The criteria used for evaluating precision of streamflow simulation are the Nash–Sutcliffe efficiency (NSE) (Nash and Sutcliffe, 1970) and relative mean error (RME), while the Pearson correlation coefficient (COR) is used to evaluate mass balance simulation. The criteria are shown by Eq. (8).

$$\begin{aligned}
 NSE &= 1 - \frac{\sum_{i=1}^n (O_i - S_i)^2}{\sum_{i=1}^n (O_i - \bar{O})^2} \\
 RME &= \frac{\sum_{i=1}^n (S_i - O_i)}{\sum_{i=1}^n O_i} \times 100 \\
 COR &= \frac{\sum_{i=1}^n (O_i - \bar{O})(S_i - \bar{S})}{\sqrt{\sum_{i=1}^n (O_i - \bar{O})^2} \sqrt{\sum_{i=1}^n (S_i - \bar{S})^2}}
 \end{aligned}
 \tag{8}$$

where  $O_i$  is the observed series;  $S_i$  is the simulated series;  $n$  is the length of series;  $\bar{O}$  and  $\bar{S}$  are the mean values of observed series and simulated series.

### 3. Study sites and data

Data of three basins are used to test the coupled model: (1) the Nigardsbreen basin in Norway (Fig. 1), (2) the Chamkhar Chhu basin in Bhutan (Fig. 2) and (3) the Beas basin in India (Fig. 2). The area of the basins ranges from 65 to 3201 km<sup>2</sup> and the glacier-covered fractions are between 15% and 73% (Table 1). Hydrographs of all basins show a similar discharge pattern characterised by a peak occurring between May and August (Fig. 3).

#### 3.1. Nigardsbreen basin

The Nigardsbreen basin is a glacierised watershed in the high mountains in western Norway (Fig. 1). It has a small area of 65 km<sup>2</sup>, but with a large range of elevation. The highest point is 1957 m amsl and the lowest in only 285 m amsl. The climate is humid, as it is influenced by the moist currents from the ocean. In addition, the climate is locally modified by the presence of the glacier. The mean annual air temperature is  $-0.47$  °C and the mean precipitation reaches 3736 mm year<sup>-1</sup>, with a large amount falling in winter as snow (Andreassen et al., 2005). Streamflow is largely determined by melting of snow and ice in the warm period of the year.

Nigardsbreen is one of the largest outlet glaciers from Jostedalbreen (the largest ice cap in mainland Europe). The glacier

is exposed towards the southeast and extends from approximately 315 to 1957 m amsl. Approximately 73% of the basin area is covered by ice (Andreassen et al., 2012). Nigardsbreen is well-known in the scientific community as it is one of the most studied alpine glaciers in Northern Europe (Oerlemans, 1986, 1997, 2007; Engelhardt et al., 2012).

The climate data are spatially interpolated maps of precipitation and temperature produced by the Norwegian Meteorological Institute (met.no) using 24-h mean temperature and accumulated precipitation measured at meteorological stations (NVE, 2015). These datasets are in a grid format at 1 km resolution and have been evaluated and used in many studies covering mainland Norway, such as hydrological modelling (Beldring et al., 2003; Li et al., 2014a), glacier mass balance estimation (Engelhardt et al., 2012, 2013), permafrost evolution (Gisnæas et al., 2013) and snow depth estimation (Vormoor and Skaugen, 2013). The areal mean value of the Nigardsbreen basin is assigned to a virtual station located at the middle of the basin.

The daily discharge is obtained from the national hydrological database, which is collected and managed by NVE. The series are transformed from the in-situ measured water depth by the Bayesian Rating Curve Fitting method (Petersen-Øverleir et al., 2009) and its quality is ensured by the NVE hydrological quality control system. The mass changes of the glacier are derived from the direct glaciological method or stakes-and-pits method, which is traditionally used by glaciologists to measure glacier mass balance (Østrem and Brugman, 1991; Hagg et al., 2004). Stakes are used to measure the changes in thickness and pits are selected sites for measuring the density at different depth. The measurements are interpolated over the glacier to obtain the total amount of glacier mass change. According to the experience of NVE, the measurements are suspected to be subject to a slight positive bias for the Norwegian coastal glaciers and the reason is not clear yet (Andreassen et al., 2011). However, no better dataset is available at present. The mass balance data have been extensively used for glacier modelling purposes (Oerlemans, 1986, 1997, 2007; Engelhardt et al., 2012).

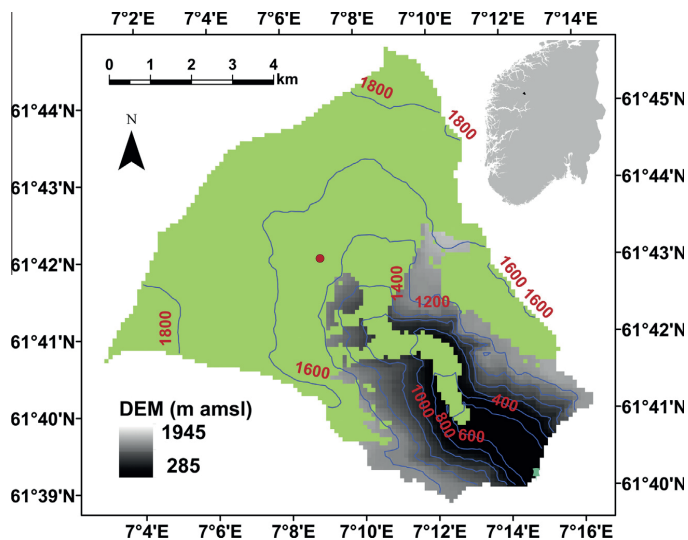


Fig. 1. Location and digital surface elevation models (DEM) of the Nigardsbreen basin at the Nigardsbreen station. The light green indicates glacier covered area. The contours are elevations (m amsl). The red dot denotes the location of the virtual meteorological station and the cyan pin marks the location of the discharge gauging station. (For interpretation of the references to colour in this figure legend, the reader is referred to the web version of this article.)



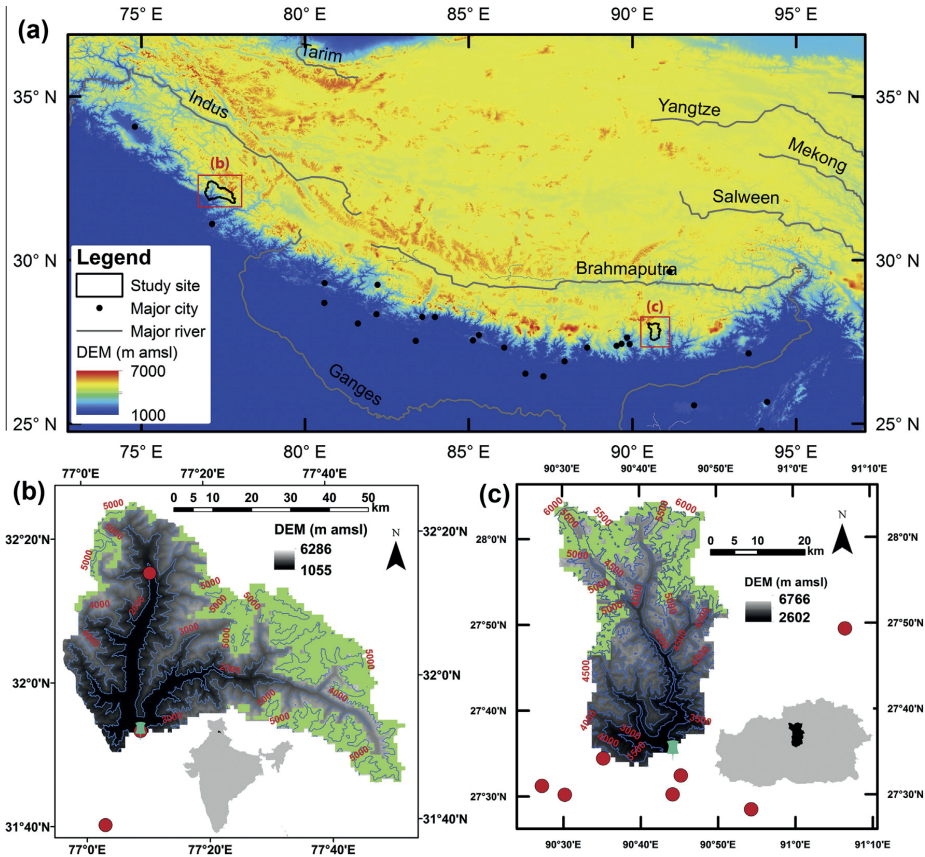


Fig. 2. Maps of the Chamkhar Chhu and Beas basins. (a) Map of the Himalaya showing the orography, major rivers and major cities and the locations of the study sites (Joshi, 2007, 2008, 2011). (b) The Beas basin at the Bhuntar gauging station. (c) The Chamkhar Chhu basin at the Kurjey gauging station. The range of DEM in (a) is assigned to give a better presentation rather than the minimum and maximum for the displaying area. Other signs are same as in Fig. 1.

Table 1

A short summary of the basins. Note: A is area of the basin in km<sup>2</sup>. ME is median elevation in m amsl. GF is glacier fraction in %. P is annual precipitation in mm year<sup>-1</sup>. T is annual mean temperature in °C.

Basin	(Lon(E), Lat(N))	A	ME	GF	P	T
Nigardsbreen	(7.24, 61.67)	65	1542	72.8	3736	-0.47
Chamkhar Chhu	(90.74, 27.59)	1353	4479	15.0	1786	1.75
Beas	(77.15, 31.88)	3202	4213	32.7	1116	-1.04

Maps of bedrock and glacier surface elevation are provided by the Norwegian Water Resources and Energy Directorate (NVE). The profiles were measured by the Radio-Echo Sounding (RES) method during spring and early summer in the years 1981, 1984 and 1985 (Sætrang and Wold, 1986). The bedrock map is obtained through interpolation of the measured profiles and the open valley. The glacier surface elevation at a spatial resolution of 25 m are derived from complete or partial aerial photos taken within the

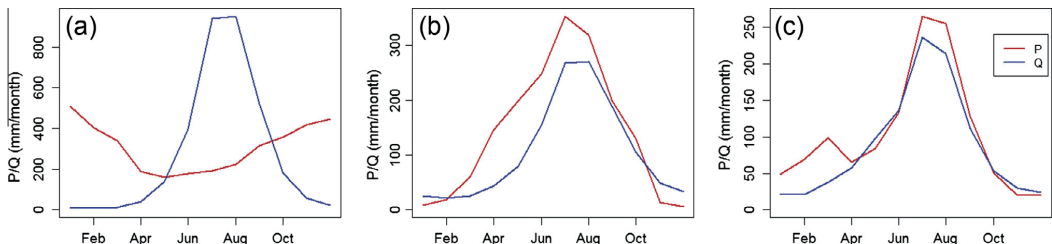


Fig. 3. Monthly mean precipitation and runoff of (a) the Nigardsbreen basin, (b) the Chamkhar Chhu basin, and (c) the Beas basin. Calculations are based on the sum of calibration and validation periods (Table 1).

**Table 2**

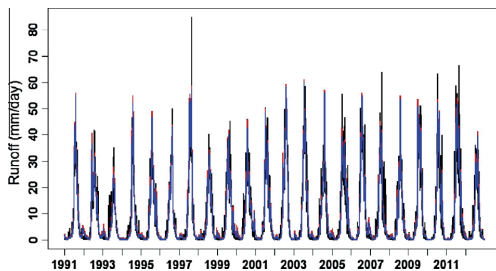
Summary of model settings. The last column indicates the observed series used in calibration and validation. *Q* means daily discharge and *M* means annual mass balance.

Basin	Resolution	Spin-up	Calibration	Validation	Series
Nigardsbreen	100 m	1989.09.01	1991.01.01–2002.12.31	2003.01.01–2012.12.31	<i>Q, M</i>
Chamkhar Chhu	1 km	1993.09.01	1998.01.01–2004.12.31	2005.01.01–2008.12.31	<i>Q</i>
Beas	1 km	1993.09.01	1997.01.01–2002.12.31	2003.01.01–2005.09.19	<i>Q</i>

**Table 3**

Numerical criteria of model calibration and validation. *Q* means daily discharge and *M* means annual mass balance.

Basin	Variable	Criteria	Calibration	Validation
Nigardsbreen	<i>Q</i>	NSE	0.90	0.90
		RME	4.61	5.38
	<i>M</i>	COR	0.90	0.92
Chamkhar Chhu	<i>Q</i>	NSE	0.87	0.85
		RME	−0.02	10.32
Beas	<i>Q</i>	NSE	0.65	0.73
		RME	2.07	−22.38



**Fig. 4.** Runoff components of the Nigardsbreen basin. Runoff below the blue line is the from the glacierised area. The red is the simulation of total runoff. The black is the observed time series. (For interpretation of the references to colour in this figure legend, the reader is referred to the web version of this article.)

period 1984–2009. The ice thickness is calculated as the difference between the glacier surface and bedrock for each grid. The thickness map is further aggregated at a resolution of 100 m, which is the spatial resolution of the HBV model for the Nigardsbreen basin. The starting date of the HBV model simulations is 1st September, 1989, which is roughly the middle of the period of the aerial photos (Table 2).

### 3.2. Chamkhar Chhu basin

The Chamkhar Chhu basin is located in central Bhutan (Fig. 2) and is the source of one of the major national rivers. The basin has three branches originating from the glaciers of the Gangkar Punsum region and the glaciers of the Monla Karchung La region. The river flows south-easterly and finally joins the Brahmaputra River in India. The basin area above the Kurjey gauging station is 1353 km<sup>2</sup>. The elevation ranges from 6653 m amsl in the upper northern glacial region to 2643 m amsl in the southern low-land. The northern part above 4000 m amsl is mainly occupied by glaciers (Fig. 2(c)) whereas the southern low-land is covered by forests.

The climate is strongly influenced by elevation and monsoon; therefore it varies from the southeast to the northwest. Based on observations in the period from 1998 to 2008, the mean precipitation is 1786 mm year<sup>−1</sup> and the mean annual air temperature is 1.75 °C. The monsoon normally starts in June and lasts until early

September. It brings significant amounts of rainfall and warm weather. Subsequently, river flow rises due to the rainfall and melting of snow and ice. As the monsoon proceeds or retreats, there are four clear seasons, spring (March to May), summer (June to August), autumn (September to November), and winter (December to the following February).

The climate data are measured by in-situ meteorological stations, as shown in Fig. 2. Data of seven stations are used; however none of them lies inside the basin. The mean of daily maximum and minimum temperatures is taken by the HBV model as input of daily air temperature. The discharge series of the Kurjey station are obtained from the national authorities, which are in charge of collecting hydrological data. The measurements are available for evaluating climate change impacts on hydropower development (Beldring, 2011).

Glacier ice thickness distribution for the Chamkhar Chhu basin is a part of the global dataset produced by Huss and Farinotti (2012) using a method based on glacier mass turnover and principles of ice-flow mechanics (Farinotti et al., 2009). Required input data are a digital elevation model and glacier outlines. For each individual glacier ice thickness distribution is determined for about the year 2000 depending on the date of the utilised glacier inventory data (Pfeffer et al., 2014). The starting date for modelling is mainly determined by the observation period of the meteorological data and is set to 1st September, 1993.

The elevation and land use data are obtained from the Department of Hydromet Services, Bhutan. The original data are at a spatial resolution of 25 m and are rescaled at 1 km. The land use data are reclassified into three broad classes, high biomass (including broadleaf forest, coniferous forest and scrub), low biomass (including glacial, pasture, rock) and human affected (agriculture and urban).

### 3.3. Beas basin

The Beas River is an important branch of the Indus River system in northern India (Fig. 2). It originates at the southern side of the Rohtang Pass in the Himalaya. The river is 470 km long and has a drainage area of 12,916 km<sup>2</sup> (Gupta et al., 1982). This area is extremely rich in hydroelectricity resources. In total, there are 11 hydroelectric plants projects and three of them are ongoing or have been finished (SANDRP, 2015). To avoid the effects of flow regulation and to have a large study area, the Bhuntar gauging station is selected. The station lies downstream of the confluence with the eastern branch, the Parbati River. Only the Malana Hydel Scheme, with a capacity of 86 MW, was running during the study period of 1997–2005. The area above the station is 3202 km<sup>2</sup>. The elevation decreases from 6288 m amsl in the northern mountains to 1055 m amsl. The area above 4500 m amsl is occupied by permanent snow and glaciers (Fig. 2(b)).

The climate is a result of a combined effect of elevation and monsoon. The northern part is much colder and drier than the low valleys. Influenced by the monsoon, there are four seasons, winter (January to March), pre-monsoon (April to June), monsoon (July to September) and post-monsoon (October to December) (Singh and Kumar, 1997). The monsoon strength is a major indicator of magnitude of precipitation and temperature. The air currents

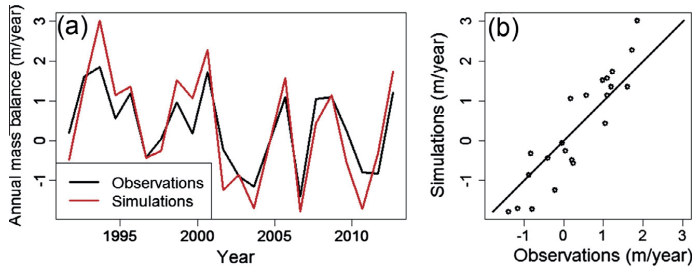


Fig. 5. Comparison of the observed and simulate annual mass balance of Nigardsbreen. The correlation coefficients are 0.90 for the calibration period and 0.92 for the validation period, as tabulated in Table 3.

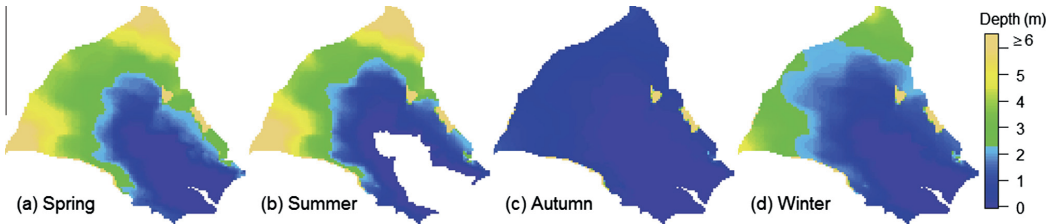


Fig. 6. Seasonal mean snowpack depth (m w.e.) in the Nigardsbreen basin. The white region is snow free. The snow-cover fractions are respectively 99.4% in (a) spring, 84.0% in (b) summer and 99.4% in (c) autumn and 99.4% in (d) winter.

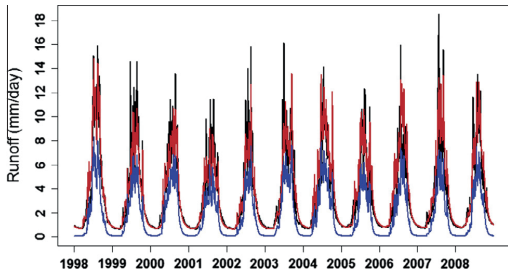


Fig. 7. Runoff components of the Chamkhar Chhu basin. Runoff below the blue line is the from the glacierised area. The red line is the simulation of total runoff. The black line is the observed runoff. (For interpretation of the references to colour in this figure legend, the reader is referred to the web version of this article.)

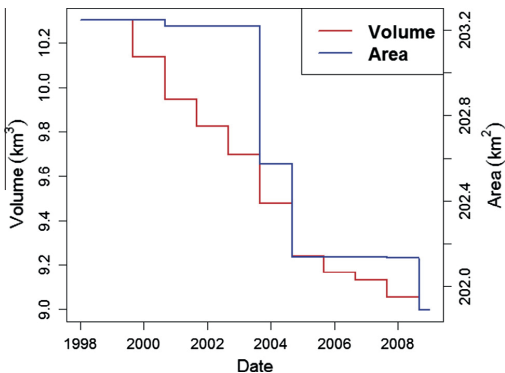


Fig. 8. Simulations of volume and area of the glaciers in the Chamkhar Chhu basin.

of the monsoon originate in the Bay of Bengal and they are weaker after striking east Himalaya and a long westward travel than in the Chamkhar Chhu basin (Singh and Kumar, 1997). Therefore, the precipitation decreases with height. Based on the observations during the period from 1997 to 2005, the mean precipitation is 1116 mm year<sup>-1</sup> and the mean annual air temperature is -1.04 °C.

Three meteorological stations measure precipitation, and daily maximum and minimum temperature. Two of the stations are located in the selected area, respectively at the north valley and the Bhuntar station. The mean of daily maximum and minimum temperature is utilised by the HBV model as temperature input. The daily discharge series only cover the period 1997–2005 and the data quality is largely unknown. Quality control is visually conducted and points of suspicious errors are not included in model calibration and validation.

The ice thickness data are also a part of the dataset provided by Huss and Farinotti (2012). The DEMs are downloaded from the Hydro1k global datasets (EROS, 1996).

4. Results

4.1. Nigardsbreen basin

The model is run at a daily time step and at a spatial resolution of 100 m. The model is calibrated for the period from 1991 to 2002 using discharge and annual mass balance and is validated for the period from 2003 to 2012. The numerical values of NSE and RME are tabulated in Table 3 which shows a high model efficiency. Fig. 4 visually shows the good performance of the model in reproducing the historical daily flow series. The annual mass balance simulations also fit well with the observations (Fig. 5). The cumulative mass change in the period 1991–2012 is +7255 mm w.e. by observations and +7231 mm w.e. according to the simulation.

As shown in Fig. 6, summer is the season with the least snow cover, with approximately 84% of the total basin area. For autumn,

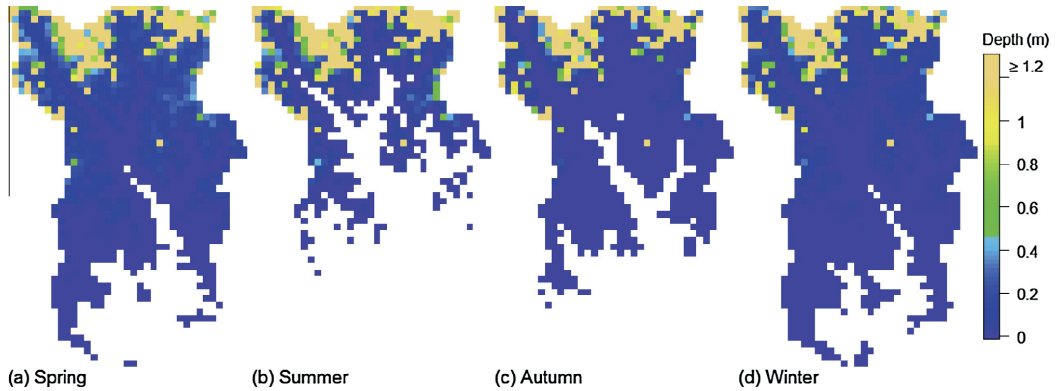


Fig. 9. Seasonal mean snowpack depth (m w.e.) in the Chamkhar Chhu basin. The white region is snow free. The snow-cover fractions are respectively 82.1% in (a) spring, 47.2% in (b) summer, 67.5% in (c) autumn and 87.7% in (d) winter.

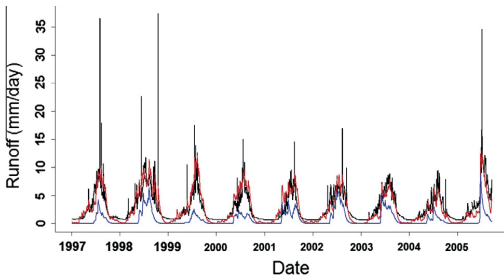


Fig. 10. Runoff components of the Beas basin. Runoff below the blue line is from the glacierised area. The red line is the simulation of total runoff. The black line is the observed time series. (For interpretation of the references to colour in this figure legend, the reader is referred to the web version of this article.)

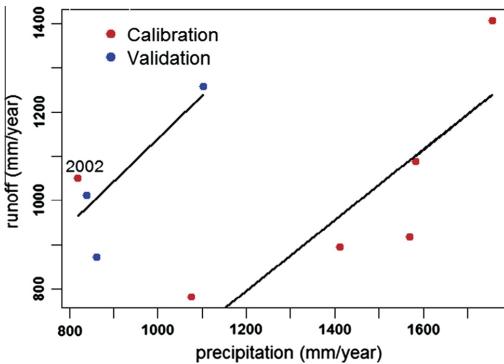


Fig. 11. Scatter plot of annual precipitation and annual runoff of the Beas basin. The right regression is based on the red dots except the year 2002. The left regression is based on the remaining dots. (For interpretation of the references to colour in this figure legend, the reader is referred to the web version of this article.)

the model produces a thinner snowpack than for summer, but a larger snow-covered area. The thinner pattern is because on 31st August, the model removes snow on glaciers and accumulation and ablation are relatively small for the autumn months.

However, the summer pattern is a result of accumulation and ablation effects for each hydrological year. The spatial distribution of snow is in agreement with the seNorge snow modelling product (NVE, 2015).

#### 4.2. Chamkhar Chhu basin

The model is run at a daily time step at a spatial resolution of 1 km. The calibration period is from 1998 to 2004 and the validation period is from 2005 to 2008 against discharge. The graphs of observed and simulated discharge are shown in Fig. 7. The NSE values for the calibration and validation are not less than 0.85 (Table 3), which indicates a very good simulation of runoff.

As shown in Fig. 8, the glaciers continued to retreat and mass balance was negative, roughly  $-0.51 \text{ m w.e. year}^{-1}$  for the period 1998–2008. The maps of seasonal mean snowpack are shown in Fig. 9. They show similar model response as the Nigardsbreen basin.

#### 4.3. Beas basin

The model is run at a daily time step on a spatial resolution of 1 km. The model is calibrated against discharge in the period from 1997 to 2002 and validation is performed for the period 2003–2005. The model efficiency is the lowest among the three basins (Table 3). As shown in Fig. 10, the model cannot capture the peaks in the observed hydrograph and significantly overestimates the low flow. The low quality of the data is likely one of the main reasons for this, as the extreme peaks are more than three times of normal high flow and most of them are only sustained for one day.

To further explore the reasons of the relatively low model efficiency, we plot the relationship between annual precipitation and runoff in Fig. 11. The year 2002 can be considered as a turning point and the relationships of precipitation and runoff are substantially modified since this year. The reasons cannot be conclusively stated by examining the annual temperature and precipitation. The shift is possibly due to some sub-daily events or changes in glacier energy balance. For the Himachal Pradesh (Western Himalaya, India) region, Azam et al. (2012) also reported a particularly negative mass balance since the year 2002 compared to the data collected during the period 1987–1989.

Fig. 12 shows the simulated snow pattern of the Beas basin. In addition to the similar model responses of the Nigardsbreen and

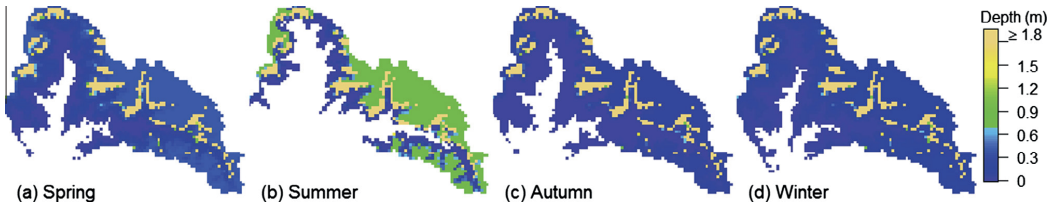


Fig. 12. Seasonal mean snowpack depth (m w.e.) in the Beas basin. The white region is snow free. The snow-cover fractions for the four seasons are respectively 85.5% in (a) spring, 58.0% in (b) summer, 82.6% in (c) autumn and 90.8% in (d) winter.

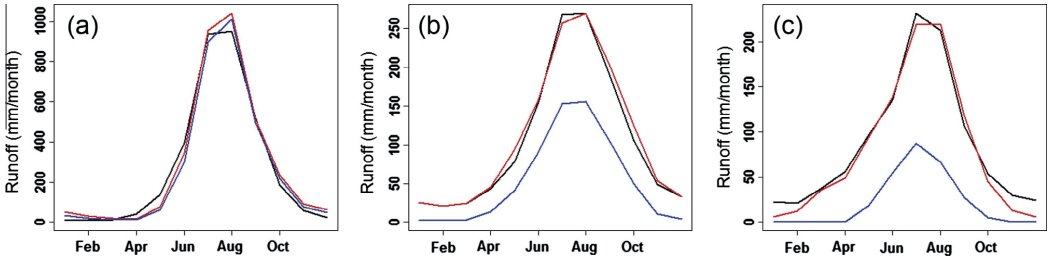


Fig. 13. Runoff components of the three basins, (a) the Nigardsbreen basin, (b) the Chamkhar Chhu basin, and (c) the Beas basin. Runoff below the blue line is from the glacierised area. The red line is the simulated total runoff. The black line is the observed runoff. (For interpretation of the references to colour in this figure legend, the reader is referred to the web version of this article.)

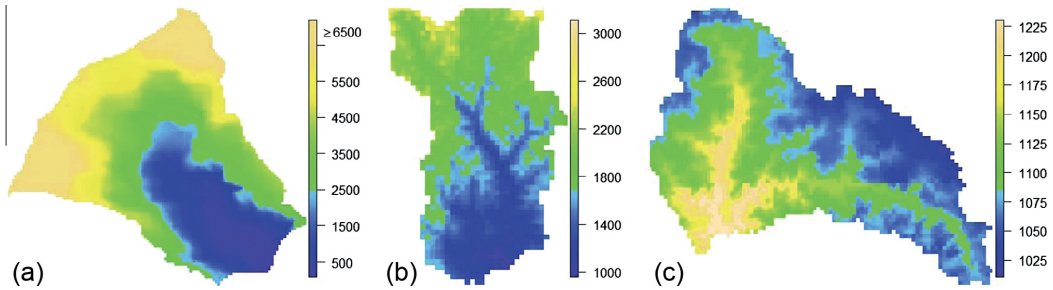


Fig. 14. Annual mean precipitation (mm year<sup>-1</sup>) of (a) the Nigardsbreen basin, (b) the Chamkhar Chhu basin, and (c) the Beas basin.

Table 4

Table of the selected HBV parameters and their values.  $T_t$  and  $MF_{snow}$  for the Chamkhar Chhu basin are land cover dependent; therefore the areal mean is given.

Name	Unit	Nigardsbreen	Chamkhar Chhu	Beas
$K_r$		1.00*	1.06	1.06
$K_s$		1.00*	1.14	0.96
$\gamma_p$		1.32	1.00	1.00
$\gamma_t$	°C per 100 m	-0.90	-0.60	-0.69
$T_{acc}$	°C	0*	-2.5*	-2.5*
$T_t$	°C	2.49	0.37	3.07
$MF_{snow}$	m day <sup>-1</sup> °C <sup>-1</sup>	8.32E-3	4.55E-3	1.78E-1
$MF_{ice}$	m day <sup>-1</sup> °C <sup>-1</sup>	9.93E-3	4.79E-3	2.26E-1

\* Indicates that the value is assigned by experience and the remaining values are optimised.

Chamkhar Chhu basins, the eastern part in the summer receives more snow than in the spring. This confirms that significant snow accumulation occurs during the summer months. The snow pattern of the Beas basin is the most complex among the three basins.

## 5. Discussions

### 5.1. Model performance

The model evaluation is based on discharge and available mass balance measurements. The results given in Table 3 show that the coupled model is able to accurately simulate both daily discharge and annual glacier mass balance in the Nigardsbreen basin. Though there are no mass balance measurements in the Chamkhar Chhu basin, the numerical criteria of NSE are higher than or equal 0.85 for the calibration and validation modes, which is considered as very good simulation. The model efficiency of the Beas basin is much lower than for the other two basins, but results are considered as acceptable, considering the availability and quality of the data.

Mapping the spatial distribution of internal variables, such as snowpack, is an advantage of distributed modelling. In the three basins, the snow storage increases from the lower elevations to the higher elevations. As stated before, the model transforms the snow remaining on glaciers to ice by 31st August, which means



that snow on glaciers is zero at the end of every summer. However, if glaciers are misrepresented by the model, the simulated snow could be misleading and should be interpreted carefully. The misrepresentation can be introduced by errors in the initial ice thickness data or generated during simulating glacier area.

### 5.2. Glacier runoff

The glacierised areas are considered to be very valuable for water resources and hydropower management (Barnett et al., 2005). Most glaciers are located at high elevation, which results in a high hydropower potential (hydraulic head). Additionally, the evaporation rate is small and the specific runoff is high in these areas.

Glacier runoff is defined as the runoff from the glacierised area, including all melt of snow and glacier ice/firn, and rain water in the most general sense (Radić and Hock, 2014; Bliss et al., 2014). Fig. 13 shows the monthly mean runoff of the three basins. The ranking of glacier contribution to runoff in the descending order is the Nigardsbreen basin (92.5%), the Chamkhar basin (48.1%) and the Beas basin (27.5%). The main reason for the highest contribution for the Nigardsbreen basin is its largest glacierisation. Additionally, the glacier contribution also depends on climate, especially the spatial distribution of precipitation within a watershed. The more precipitation falls on the glacierised areas, the higher the glacier's contributions to runoff. As shown in Fig. 14, the precipitation decreases from upstream to downstream in the Nigardsbreen basin and in the Chamkhar Chhu basin. However, in the Beas basin, more precipitation falls in the valleys compared to the high mountains. As a result of these spatial distribution patterns of precipitation, the ratio of the glacier's contribution is higher in the Chamkhar Chhu basin than in the Beas basin, even though the latter has a higher glacierisation.

There is no doubt that runoff of these basins is strongly defined by both glaciers and precipitation. Glacier melting is dominant in the Nigardsbreen basin, whereas precipitation is the main contributor in the Chamkhar Chhu and Beas basins. For a given increase in temperature, the three basins are expected to respond differently in terms of runoff and glacier existence. The sensitivity of a basin to climate change and effects on runoff can be studied by running the model with climate projections and this is an on-going research.

### 5.3. Uncertainties

Uncertainties can inherit from data, models and their parameters; small uncertainties can accumulate into considerable uncertainties in the target outputs through the modelling processes (Seiller and Antil, 2014; Bastola et al., 2011).

The quality of climate data is very important in hydrological modelling. In the studies of the Chamkhar Chhu and Beas basins, the meteorological stations are sparsely distributed and mainly located at low elevation places. This distribution leads to a low representativeness of the spatial precipitation and temperature. Though in the interpolation of the station measurements, elevation effects have been considered, the exposure to the sun also influences snow and ice melt. For very high mountain glaciers, air temperature is seldom above the melting point and due to thin atmospheres, it is a humble indicator of energy (Hock, 2003; Sicart et al., 2008). The accumulated ice flows to lower elevations due to ice dynamics. The accumulation and melting should be carefully interpreted in their total amount rather than the spatial details.

The discharge series are essential to calibrate and validate hydrological models. Therefore, their accuracy and length should be adequate. However, the available discharge series of the

Himalayan basins typically have a length of only ten years. In addition, the accuracy is affected by the measurement methodology and quality is not ensured, particularly for the Beas basin.

Initial conditions provide a starting point for a model system. The initial conditions of the hydrological models are determined by model simulations, usually referred to as model "spin-up". However, this method cannot be used to construct the glacier state in current climate. A glacier forms over many years and recent warming has induced melting for most glaciers globally. Considerable uncertainties exist in the initial state of glaciers in the three basins.

For the  $\Delta h$ -parameterisation, a limitation is that this model is only valid for retreating glaciers, which is generally true for most mountain glaciers at present and for the near future. At present no scheme is implemented that allows describing the expansion of glaciers following positive mass change; they just increase the total glacier volume. The four parameters of the  $\Delta h$ -parameterisation are only calibrated according to discharge in the Chamkhar Chhu and Beas basins. How well they are identified needs further evaluations. For the HBV parameters, the optimised values are given in Table 4, which shows that the parameters values are in general within their empirical ranges except few parameters for the Beas basin.

## 6. Conclusions

Glaciers strongly influence hydrology in glacierised areas. However, these effects have not been well understood and well simulated quantitatively at present due to imperfect tools and data scarcity. In this study, we integrated a simple approach for simulating glacier geometry change, the  $\Delta h$ -parameterisation into the HBV model, to study the dynamics of hydrological processes in glacierised basins. The combined model requires easily accessible inputs data (precipitation, temperature and initial ice thickness) and provides the dynamics of glacier system and consequent runoff processes. The model can be used for estimating runoff, snow and glacier mass balance in past and future.

The coupled model is tested in three high mountain basins with different climates and data quantity and quality. Among the basins, the Nigardsbreen basin has the longest time series of discharge data and observed annual glacier mass balance. Comparisons of model simulations with the observations show that the model yields very high model efficiency in simulation of discharge and annual mass balance for the Nigardsbreen basin. The least model efficiency is found for the Beas basin possibly due to uncertainties in input data and the changed precipitation-runoff relationship since the year 2002. Additionally, the model can provide maps of snowpack distribution and estimate runoff components from glaciers.

## Acknowledgements

This study is funded by the Research Council of Norway through the research project-JOINTINDNOR (Project Number 203867) and the Department of Science and Technology, Govt. of India. All the data of the Chamkhar Chhu basin are provided by the Department of Hydromet Services, Ministry of Economic Affairs, Royal Government of Bhutan. Thanks also go to Norwegian Water Resources and Energy Directorate for providing the data of the Nigardsbreen basin and computational facility, and helps in Geographic Information System and the Bhakra Beas Management Board for providing the data of the Beas basin. The authors are also grateful to the reviewers for their valuable comments and suggestions, which are very helpful to the substantial improvement of this paper.

## References

- Akhtar, M., Ahmad, N., Booi, M., 2008. The impact of climate change on the water resources of Hindukush–Karakorum–Himalaya region under different glacier coverage scenarios. *J. Hydrol.* 355, 148–163. <http://dx.doi.org/10.1016/j.jhydrol.2008.03.015>.
- Andreassen, L.M., Elvehy, H., Jackson, M., Kjllmoen, B., Giesen, R.H., 2011. Glaciological Investigations in Norway in 2010. Report 03 Norwegian Water Resources and Energy Directorate. <<http://webby.nve.no/publikasjoner/report/2011/report201103.pdf>>.
- Andreassen, L.M., Elvehy, H., Kjllmoen, B., Engeset, R.V., Haakensen, N., 2005. Glacier mass-balance and length variation in Norway. *Ann. Glaciol.* 42, 317–325. <http://dx.doi.org/10.3189/172756405781812826>.
- Andreassen, L.M., Winsvold, S.H., Paul, F., Hausberg, J.E., 2012. Inventory of Norwegian Glaciers. Report 38 Norwegian Water Resources and Energy Directorate. <<http://webby.nve.no/publikasjoner/rapport/2012/rapport201238.pdf>>.
- Arendt, A.A., Echelmeyer, K.A., Harrison, W.D., Lingle, C.S., Valentine, V.B., 2002. Rapid wastage of Alaska glaciers and their contribution to rising sea level. *Science* 297, 382–386. <http://dx.doi.org/10.1126/science.1072497>.
- Arnold, N., Willis, I., Sharp, M., Richards, K., Lawson, W., 1996. A distributed surface energy-balance model for a small valley glacier. I. Development and testing for Haut Glacier d'Arolla, Valais, Switzerland. *J. Glaciol.* 42, 77–89. <<http://www.igsoc.org/journal/old/42/140/igsjournalvol42issue140pg77-89.pdf>>.
- Arora, M., Kumar, R., Kumar, N., Malhotra, J., 2014. Assessment of suspended sediment concentration and load from a large Himalayan glacier. *Hydrol. Res.* 45, 292–306. <http://dx.doi.org/10.2166/nh.2013.129>.
- Azam, M.F., Wagon, P., Ramanathan, A., Vincent, C., Sharma, P., Arnaud, Y., Linda, A., Pottakkal, J.G., Chevallier, P., Singh, V.B., Berthier, E., 2012. From balance to imbalance: a shift in the dynamic behaviour of Chhota Shigri glacier, western Himalaya, India. *J. Glaciol.* 58, 315–324. <http://dx.doi.org/10.3189/2012JoG11J123>.
- Barnett, T.P., Adam, J.C., Lettenmaier, D.P., 2005. Potential impacts of a warming climate on water availability in snow-dominated regions. *Nature* 438, 303–309. <http://dx.doi.org/10.1038/nature04141>.
- Bastola, S., Murphy, C., Sweeney, J., 2011. The role of hydrological modelling uncertainties in climate change impact assessments of Irish river catchments. *Adv. Water Resour.* 34, 562–576. <http://dx.doi.org/10.1016/j.advwatres.2011.01.008>.
- Bauder, A., Funk, M., Huss, M., 2007. Ice-volume changes of selected glaciers in the Swiss Alps since the end of the 19th century. *Ann. Glaciol.* 46, 145–149. <http://dx.doi.org/10.3189/172756407782871701>.
- Beldring, S., 2011. Climate Change Impacts on the Flow Regimes of Rivers in Bhutan and Possible Consequences for Hydropower Development. Report 04 Norwegian Water Resources and Energy Directorate. <<http://www.nve.no/Global/Publikasjoner/Publikasjoner>>.
- Beldring, S., Engeland, K., Roald, L.A., Selthun, N.R., Voks, A., 2003. Estimation of parameters in a distributed precipitation-runoff model for Norway. *Hydrol. Earth Syst. Sci.* 7, 304–316. <http://dx.doi.org/10.5194/hess-7-304-2003>.
- Beniston, M., 2003. Climatic change in mountain regions: a review of possible impacts. *Climatic Change* 59, 5–31. <http://dx.doi.org/10.1023/A:1024458411589>.
- Bergström, S., 1976. Development and Application of a Conceptual Runoff Model for Scandinavian Catchments. Report 07 Swedish Meteorological and Hydrological Institute. <<http://books.google.no/books?id=vRyEQAAACAAJ>>.
- Bliss, A., Hock, R., Radić, V., 2014. Global response of glacier runoff to twenty-first century climate change. *J. Geophys. Res. Earth Surf.* 119, 717–730. <http://dx.doi.org/10.1002/2013JF002931>.
- Bolch, T., 2007. Climate change and glacier retreat in northern Tien Shan (Kazakhstan/Kyrgyzstan) using remote sensing data. *Glob. Planet. Change* 56, 1–12. <http://dx.doi.org/10.1016/j.gloplacha.2006.07.009>.
- Bolch, T., Kulkarni, A., Kääb, A., Huggel, C., Paul, F., Cogley, J.G., Frey, H., Kargel, J.S., Fujita, K., Scheel, M., Bajracharya, S., Stoffel, M., 2012. The state and fate of Himalayan glaciers. *Science* 336, 310–314. <http://dx.doi.org/10.1126/science.1215828>.
- Burlando, P., Pellicciotti, F., Strasser, U., 2002. Modelling mountainous water systems between learning and speculating looking for challenges. *Nord. Hydrol.* 33, 47–74. <http://dx.doi.org/10.2166/nh.2002.004>.
- Carey, M., 2005. Living and dying with glaciers: people's historical vulnerability to avalanches and outburst floods in Peru. *Glob. Planet. Change* 47, 122–134. <http://dx.doi.org/10.1016/j.gloplacha.2004.10.007>.
- Carey, M., 2007. The history of ice: how glaciers became an endangered species. *Environ. Hist.* 12, 497–527. <http://dx.doi.org/10.1093/ehnhis/12.3.497>.
- Doherty, J., 2005. PEST Model-Independent Parameter Estimation User Manual. Watermark Numerical Computing, fifth ed. <<http://www.pesthomepage.org/Downloads.php>>.
- Doherty, J., Johnston, J.M., 2003. Methodologies for calibration and predictive analysis of a watershed model<sup>1</sup>. *J. Am. Water Resour. Assoc.* 39, 251–265. <http://dx.doi.org/10.1111/j.1752-1688.2003.tb04381.x>.
- Engelhardt, M., Schuler, T.V., Anderson, L.M., 2012. Evaluation of gridded precipitation for Norway using glacier mass-balance measurements. *Geogr. Ann. Ser. A Phys. Geogr.* 94, 501–509. <http://dx.doi.org/10.1111/j.1468-0459.2012.00473.x>.
- Engelhardt, M., Schuler, T.V., Andreassen, L.M., 2013. Glacier mass balance of Norway 1961–2010 calculated by a temperature-index model. *Ann. Glaciol.* 54, 32–40. <http://dx.doi.org/10.3189/2013AoG63A245>.
- EROS, 1996. Hydro1k Elevation Derivative Database. <<https://lta.cr.usgs.gov/HYDRO1K>>.
- Farinotti, D., Huss, M., Bauder, A., Funk, M., Truffer, M., 2009. A method to estimate the ice volume and ice-thickness distribution of alpine glaciers. *J. Glaciol.* 55, 422–430. <http://dx.doi.org/10.3189/002214309788816759>.
- Gisnas, K., Etzelmüller, B., Farbror, H., Schuler, T.V., Westermann, S., 2013. CryoGRID 1.0: permafrost distribution in Norway estimated by a spatial numerical model. *Permafrost Periglacial Process.* 24, 2–19. <http://dx.doi.org/10.1002/ppp.1765>.
- Gottlieb, L., 1980. Development and applications of a runoff model for snowcovered and glacierized basins. *Nord. Hydrol.* 11, 255–272. <http://dx.doi.org/10.2166/nh.1980.020>.
- Götzinger, J., Bárdossy, A., 2005. Integration and calibration of a conceptual rainfall-runoff model in the framework of a decision support system for river basin management. *Adv. Geosci.* 5, 31–35. <http://dx.doi.org/10.5194/adgeo-5-31-2005>.
- Greuell, W., 1992. Hinterseiferner, Austria: mass-balance reconstruction and numerical modelling of the historical length variations. *J. Glaciol.* 38, 233–244. <<http://www.igsoc.org:8080/journal/38/129/igsjournalvol38issue129pg233-244.pdf>>.
- Gupta, R., Duggal, A., Rao, S., Sankar, G., Singhal, B., 1982. Snow-cover area vs. snowmelt runoff relation and its dependence on geomorphology? – A study from the Beas catchment (Himalayas, India). *J. Hydrol.* 58, 325–339. [http://dx.doi.org/10.1016/0022-1694\(82\)90042-7](http://dx.doi.org/10.1016/0022-1694(82)90042-7).
- Hagg, W., Braun, L., Kuhn, M., Nesgaard, T., 2007. Modelling of hydrological response to climate change in glacierized Central Asian catchments. *J. Hydrol.* 332, 40–53. <http://dx.doi.org/10.1016/j.jhydrol.2006.06.021>.
- Hagg, W., Braun, L., Weber, M., Becht, M., 2006. Runoff modelling in glacierized Central Asian catchments for present-day and future climate. *Nord. Hydrol.* 37, 93–105. <http://dx.doi.org/10.2166/nh.2006.001>.
- Hagg, W.J., Braun, L.N., Uvarov, V.N., Makarevich, K.G., 2004. A comparison of three methods of mass-balance determination in the Tuuyusu glacier region, Tien Shan, Central Asia. *J. Glaciol.* 50, 505–510. <http://dx.doi.org/10.3189/172756504781829783>.
- Hailgeorgis, T.T., Alfredsen, K., 2015. Comparative evaluation of performances of different conceptualisations of distributed HBV runoff response routines for prediction of hourly streamflow in boreal mountainous catchments. *Hydrol. Res.* (in press). <http://dx.doi.org/10.2166/h.2014.051>.
- Hock, R., 2003. Temperature index melt modelling in mountain areas. *J. Hydrol.* 282, 104–115. [http://dx.doi.org/10.1016/S0022-1694\(03\)00257-9](http://dx.doi.org/10.1016/S0022-1694(03)00257-9).
- Hock, R., 2005. Glacier melt: a review of processes and their modelling. *Prog. Phys. Geogr.* 29, 362–391. <http://dx.doi.org/10.1191/0309133305pp453ra>.
- Horton, P., Schaeffli, B., Mezghani, A., Hingray, B., Musy, A., 2006. Assessment of climate-change impacts on alpine discharge regimes with climate model uncertainty. *Hydrol. Process.* 20, 2091–2109. <http://dx.doi.org/10.1002/hyp.6197>.
- Hubbard, A., Blatter, H., Nienow, P., Mair, D., Hubbard, B., 1998. Comparison of a three-dimensional model for glacier flow with field data from Haut Glacier d'Arolla, Switzerland. *J. Glaciol.* 44, 368–378. <<http://www.igsoc.org:8080/journal/44/147/igsjournalvol44issue147pg368-378.pdf>>.
- Huss, M., Farinotti, D., 2012. Distributed ice thickness and volume of all glaciers around the globe. *J. Geophys. Res. Earth Surf.* 117, F04010. <http://dx.doi.org/10.1029/2012JF002523>.
- Huss, M., Farinotti, D., Bauder, A., Funk, M., 2008. Modelling runoff from highly glacierized alpine drainage basins in a changing climate. *Hydrol. Process.* 22, 3888–3902. <http://dx.doi.org/10.1002/hyp.7055>.
- Huss, M., Jouvett, G., Farinotti, D., Bauder, A., 2010. Future high-mountain hydrology: a new parameterization of glacier retreat. *Hydrol. Earth Syst. Sci.* 14, 815–829. <http://dx.doi.org/10.5194/hess-14-815-2010>.
- Immerzeel, W., Droogers, P., de Jong, S., Bierkens, M., 2009. Large-scale monitoring of snow cover and runoff simulation in Himalayan river basins using remote sensing. *Rem. Sens. Environ.* 113, 40–49. <http://dx.doi.org/10.1016/j.rse.2008.08.010>.
- Immerzeel, W.W., van Beek, L., Konz, M., Shrestha, A., Bierkens, M., 2012. Hydrological response to climate change in a glacierized catchment in the Himalayas. *Climatic Change* 110, 721–736. <http://dx.doi.org/10.1007/s10584-011-0143-4>.
- Jain, S.K., Thakural, L., Singh, R., Lohani, A., Mishra, S., 2011. Snow cover depletion under changed climate with the help of remote sensing and temperature data. *Nat. Hazards* 58, 891–904. <http://dx.doi.org/10.1007/s11069-010-9696-1>.
- Jasper, K., Calanca, P., Gyalistras, D., Fuhrer, J., 2004. Differential impacts of climate change on the hydrology of two alpine river basins. *Clim. Res.* 26, 113–129. <http://dx.doi.org/10.3354/cr026113>.
- Johannesson, T., Raymond, C., Waddington, E., 1989. Time-scale for adjustment of glaciers to changes in mass balance. *J. Glaciol.* 35, 355–369. <<http://www.igsoc.org:8080/journal/35/121/igsjournalvol35issue121pg355-369.pdf>>.
- Joshi, G., 2007. Major Cities of Hindu Kush Himalayan (HKH) Region (accessed in January 2015). <<http://rds.icimod.org/Home/DataDetail?metadatald=3434&searchlist=True>>.
- Joshi, G., 2008. Major River Systems of Hindu Kush Himalayan (HKH) Region. (accessed in January 2015). <<http://rds.icimod.org/Home/DataDetail?metadatald=2956&searchlist=True>>.
- Joshi, G., 2011. Digital Elevation Model of Hindu Kush Himalayan (HKH) Region (accessed in January 2015). <<http://rds.icimod.org/Home/DataDetail?metadatald=8744&searchlist=True>>.

- Jouvet, G., Huss, M., Blatter, H., Picasso, M., Rappaz, J., 2009. Numerical simulation of Rhonegletscher from 1874 to 2100. *J. Comput. Phys.* 228, 6426–6439. <http://dx.doi.org/10.1016/j.jcp.2009.05.033>.
- Kaser, G., Grohauer, M., Marzeion, B., 2010. Contribution potential of glaciers to water availability in different climate regimes. *Proc. Nat. Acad. Sci.* 104, 20223–20227. <http://dx.doi.org/10.1073/pnas.1008162107>.
- Khadka, D., Babel, M.S., Shrestha, S., Tripathi, N.K., 2014. Climate change impact on glacier and snow melt and runoff in Tamakoshi basin in the Hindu Kush Himalayan (HKH) region. *J. Hydrol.* 511, 49–60. <http://dx.doi.org/10.1016/j.jhydrol.2014.01.005>.
- Klok, E.L., Oerlemans, J., 2002. Model study of the spatial distribution of the energy and mass balance of Morteratschgletscher, Switzerland. *J. Glaciol.* 48, 505–518. <http://dx.doi.org/10.3189/172756502781831133>.
- Kotlarski, S., Jacob, D., Podzun, R., Paul, F., 2010. Representing glaciers in a regional climate model. *Clim. Dyn.* 34, 27–46. <http://dx.doi.org/10.1007/s00382-009-0685-6>.
- Li, H., Beldring, S., Xu, C.-Y., 2014a. Implementation and testing of routing algorithms in the distributed Hydrologiska Byrans Vattenbalansavdelning model for mountainous catchments. *Hydrol. Res.* 45, 322–333. <http://dx.doi.org/10.2166/nh.2013.009>.
- Li, H., Beldring, S., Xu, C.-Y., Jain, S., October 2014b. Modelling runoff and its components in Himalayan basins. In: *Hydrology in a Changing World: Environmental and Human Dimensions* number 363 in FRIEND-Water. Montpellier, France, pp. 158–164. <http://iahs.info/Publications-News.do>.
- Lindström, G., Johansson, B., Persson, M., Gardelin, M., Bergström, S., 1997. Development and test of the distributed HBV-96 hydrological model. *J. Hydrol.* 201, 272–288. [http://dx.doi.org/10.1016/S0022-1694\(97\)00041-3](http://dx.doi.org/10.1016/S0022-1694(97)00041-3).
- Lüthi, M.P., 2009. Transient response of idealized glaciers to climate variations. *J. Glaciol.* 55, 918–930. <http://dx.doi.org/10.3189/002214309790152519>.
- Marshall, S.J., 2014. Meltwater runoff from Haig Glacier, Canadian Rocky Mountains, 2002–2013. *Hydrol. Earth Syst. Sci. Discuss.* 11, 8355–8407. <http://dx.doi.org/10.5194/hessd-11-8355-2014>.
- Mayr, E., Hagg, W., Mayer, C., Braun, L., 2013. Calibrating a spatially distributed conceptual hydrological model using runoff, annual mass balance and winter mass balance. *J. Hydrol.* 478, 40–49. <http://dx.doi.org/10.1016/j.jhydrol.2012.11.035>.
- Nash, J., Sutcliffe, J., 1970. River flow forecasting through conceptual models Part I – A discussion of principles. *J. Hydrol.* 10, 282–290. [http://dx.doi.org/10.1016/0022-1694\(70\)90255-6](http://dx.doi.org/10.1016/0022-1694(70)90255-6).
- Naz, B.S., Frans, C.D., Clarke, G.K.C., Burns, P., Lettenmaier, D.P., 2014. Modeling the effect of glacier recession on streamflow response using a coupled glacio-hydrological model. *Hydrol. Earth Syst. Sci.* 18, 787–802. <http://dx.doi.org/10.5194/hess-18-787-2014>.
- NVE, seNorge.no (accessed in March 2015). <http://www.senorge.no/aboutSeNorge.html?show=on>.
- O'Callaghan, J.F., Mark, D.M., 1984. The extraction of drainage networks from digital elevation data. *Comput. Vis. Graph. Image Process.* 28, 323–344. [http://dx.doi.org/10.1016/S0734-189X\(84\)80011-0](http://dx.doi.org/10.1016/S0734-189X(84)80011-0).
- Oerlemans, J., 1986. An attempt to simulate historic front variations of Nigardsbreen, Norway. *Theoret. Appl. Climatol.* 37, 126–135. <http://dx.doi.org/10.1007/BF00867846>.
- Oerlemans, J., 1997. A flowline model for Nigardsbreen, Norway: projection of future glacier length based on dynamic calibration with the historic record. *J. Glaciol.* 24, 382–389. <http://dx.doi.org/10.1017/jgl.1997.0011>.
- Oerlemans, J., 2007. Estimating response times of Vadret da Morteratsch, Vadret da Palù, Briksdalsbreen and Nigardsbreen from their length records. *J. Glaciol.* 53, 357–362. <http://dx.doi.org/10.3189/002214307783258387>.
- Östrem, G., Brugman, M., 1991. Glacier Mass-Balance Measurements: A Manual for Field and Office Work. Report 04 National Hydrology Research Institute. <http://www.wgms.ch/downloads/OestremBrugmanGlacierMassBalanceMeasurements1991.pdf>.
- Petersen-verleir, A., Soot, A., Reitan, T., 2009. Bayesian rating curve inference as a streamflow data quality assessment tool. *Water Resour. Manage.* 23, 1835–1842. <http://dx.doi.org/10.1007/s11269-008-9354-5>.
- Pfeffer, W.T., Arendt, A.A., Bliss, A., Bolch, T., Cogley, J.G., Gardner, A.S., Hagen, J.-O., Hock, R., Kaser, G., Kienholz, C., Miles, E.S., Moholdt, G., Mölg, N., Paul, F., Radić, V., Rastner, P., Raup, B.H., Rich, J., Sharp, M.J., 2014. The Randolph Glacier Inventory: a globally complete inventory of glaciers. *J. Glaciol.* 60, 537. <http://dx.doi.org/10.3189/2014jgl13j176>.
- Radić, V., Hock, R., 2014. Glaciers in the Earth's hydrological cycle: assessments of glacier mass and runoff changes on global and regional scales. *Surv. Geophys.* 35, 813–837. <http://dx.doi.org/10.1007/s10712-013-9262-y>.
- Setrang, A.C., Wold, B., 1986. Results from the radio echo-sounding on parts of the Jostedalbreen ice cap, Norway. *Ann. Glaciol.* 8, 156–158. <http://www.igsoc.org/8080/annals/8/figsannalsvol08year1985pg156-158.pdf>.
- SANDRP. Hydro Electric Projects in Beas River Basin (accessed in February 2015). <http://sandrp.in/basinmaps/HydropowerProjectsInBeasBasin.pdf>.
- Seiller, G., Antil, F., 2014. Climate change impacts on the hydrologic regime of a Canadian river: comparing uncertainties arising from climate natural variability and lumped hydrological model structures. *Hydrol. Earth Syst. Sci.* 18, 2033–2047. <http://dx.doi.org/10.5194/hess-18-2033-2014>.
- Shrestha, M., Wang, L., Koike, T., Xue, Y., Hirabayashi, Y., 2012. Modeling the spatial distribution of snow cover in the Dudhkoshi region of the Nepal Himalayas. *J. Hydrometeorol.* 13, 204–222. <http://dx.doi.org/10.1175/JHM-D-10-05027.1>.
- Sicart, J.E., Hock, R., Six, D., 2008. Glacier melt, air temperature, and energy balance in different climates: the Bolivian Tropics, the French Alps, and northern Sweden. *J. Geophys. Res.* 113 (December), D24113. <http://dx.doi.org/10.1029/2008JD010406>.
- Singh, P., Haritashya, U.K., Kumar, N., Singh, Y., 2006. Hydrological characteristics of the Gangotri Glacier, central Himalayas, India. *J. Hydrol.* 327, 55–67. <http://dx.doi.org/10.1016/j.jhydrol.2005.11.060>.
- Singh, P., Kumar, N., 1997. Effect of orography on precipitation in the western Himalayan region. *J. Hydrol.* 199, 183–206. [http://dx.doi.org/10.1016/S0022-1694\(96\)03222-2](http://dx.doi.org/10.1016/S0022-1694(96)03222-2).
- Singh, P., Kumar, N., 1997. Impact assessment of climate change on the hydrological response of a snow and glacier melt runoff dominated Himalayan river. *J. Hydrol.* 193, 316–350. [http://dx.doi.org/10.1016/S0022-1694\(96\)03142-3](http://dx.doi.org/10.1016/S0022-1694(96)03142-3).
- Stahl, K., Moore, R.D., Shea, J.M., Hutchinson, D., Cannon, A.J., 2008. Coupled modelling of glacier and streamflow response to future climate scenarios. *Water Resour. Res.* 44, W02422. <http://dx.doi.org/10.1029/2007WR005956>.
- Uhlenbrook, S., Seibert, J., Leibundgut, C., Rodhe, A., 1999. Prediction uncertainty of conceptual rainfall-runoff models caused by problems in identifying model parameters and structure. *Hydrol. Sci. J.* 44, 779–797. <http://dx.doi.org/10.1080/02626669909492273>.
- Vormoor, K., Skaugen, T., 2013. Temporal disaggregation of daily temperature and precipitation grid data for Norway. *J. Hydrometeorol.* 14, 989–999. <http://dx.doi.org/10.1175/JHM-D-12-0139.1>.
- Wrede, S., Seibert, J., Uhlenbrook, S., 2013. Distributed conceptual modelling in a Swedish lowland catchment: a multi-criteria model assessment. *Hydrol. Res.* 44, 318–333. <http://dx.doi.org/10.2166/nh.2012.056>.
- Zemp, M., Roer, I., Käbb, A., Hoelzle, M., Paul, F., Haeblerli, W., 2008. Global Glacier Changes: Facts and Figures. The United Nations Environment Programme and The World Glacier Monitoring Service. <http://www.grid.unep.ch/glaciers/>.