

# Fibrin Glue (FG) Attenuates Fibrosis on Human Tenon's Fibroblasts (HTFS) of Glaucomatous Eyes Comparison With Mitomycin C

*by* Hendrian Dwikoloso Soebagjo

---

**Submission date:** 20-Apr-2020 12:38AM (UTC+0800)

**Submission ID:** 1301595824

**File name:** blasts\_HTFS\_of\_Glaucomatous\_Eyes\_Comparison\_With\_Mitomycin\_C.pdf (318.74K)

**Word count:** 4909

**Character count:** 26033

## FIBRIN GLUE (FG) ATTENUATES FIBROSIS ON HUMAN TENON'S FIBROBLASTS (HTFS) OF GLAUCOMATOUS EYES : COMPARISON WITH MITOMYCIN C

Yuyun Rindiastuti<sup>1</sup>, Evelyn Komaratih\*<sup>2</sup>, Helen Susilowati<sup>1</sup>, Hendrian D. Soebagyo<sup>2</sup> and Fedik A. Rantam<sup>1</sup>

<sup>1</sup>Stem Cell Research and Development Center, Universitas Airlangga, Surabaya, Indonesia.

<sup>2</sup>Department of Ophthalmology, Faculty of Medicine, Universitas Airlangga/ Dr. Soetomo General Academic Hospital, Surabaya.  
e-mail : risetpublikasi@gmail.com

(Received 13 August 2019, Revised 14 October 2019, Accepted 25 October 2019)

**ABSTRACT :** Human tenon's fibroblasts (HTFs) are major cells that contribute to the fibrotic response that usually occurs after trabeculectomy. The activation of HTFs into myofibroblast contributes to the disturbance of the extracellular matrix (ECM) remodeling. Excessive ECM deposition, mainly collagen type I, with cell contraction is the major hallmark of bleb fibrosis. HTFs were isolated from the tenon's tissue of a glaucomatous patient. HTFs were divided into 3 groups which consisted of FBS 2% control group, MMC and FG treated group. This study investigated the effects of FG on cell viability, cell migration, cell contractility, collagen synthesis and degradation in HTFs. Cell viability was determined by MTT-assay, while collagen synthesis and degradation were determined by Sirius red binding assay. Cell migration was carried out by in vitro scratch assay, and cell contractility was analyzed by fibroblast populated-collagen gel assay. Differences in cell viability, cell contractility, collagen synthesis and degradation among the various groups were analyzed using One-way ANOVA or Kruskal Wallis test, followed by a posthoc test with 95% confidence interval ( $p < 0.05$ ). FG significantly decreased collagen synthesis ( $31.31 \pm 2.91 \mu\text{g/mL}$ ) in line with the induction of collagen degradation ( $85.50 \pm 3.16 \mu\text{g/mL}$ ) in HTFs when compared to FBS 2% control. While FG inhibits cell contraction while maintaining cell viability in HTFs, MMC provides a better antifibrotic effect in HTFs. FG may inhibit fibrosis formation of HTFs by inhibiting collagen synthesis and cell contraction while inducing collagen degradation. FG might have an antifibrotic effect on HTFs through extracellular matrix remodeling.

**Key words :** Fibrin glue, tenon's fibroblast, fibrosis, mitomycin C.

### INTRODUCTION

It is estimated that more than 60.5 million people worldwide are threatened by glaucoma and this number is predicted to increase to 79.6 million by 2020. Glaucoma permanently damages optic neurons, leading to irreversible blindness (Yamanaka *et al*, 2015; Masompour *et al*, 2016). Reducing intraocular pressure (IOP) is the most effective strategy to halt the progression of visual impairment. The use of medication that lowers intraocular pressure is the first choice in glaucoma treatment, including agents that reduce aqueous humor production or promote outflow. When this method fails to control IOP, surgical intervention is suggested including laser, filtration surgery, and tube shunt surgery (Masompour *et al*, 2016; Cordeiro *et al*, 2000). Trabeculectomy is the most common surgical intervention in developing countries. A healing response is the critical determinant factor in final IOP after trabeculectomy. Subconjunctival fibrosis is the main cause of failure in

glaucoma filtration surgery and it accounts for about 24% to 74% of the failures in the 4 years after surgery (Masompour *et al*, 2016; Lama and Fechtner, 2003).

The human Tenon's fibroblasts (HTFs) are considered the major cell types that contribute to the fibrotic response triggered after trabeculectomy. Upon TGF- $\beta$  stimulation, fibroblasts are activated and undergo phenotypic transition into myofibroblasts, which are the key effector cells in fibrotic states. TGF- $\beta$  promotes matrix preservation and deposition by enhancing matrix protein synthesis and by altering the balance between matrix-preserving and matrix-degrading signals (Seet *et al*, 2012; Wang *et al*, 2017). Excessive ECM deposition, mainly collagen type I, with cell contraction is the major hallmark of bleb fibrosis. Several treatments have been developed to successfully modulate subconjunctival fibrosis after glaucoma filtration surgery. Antimetabolite agents, such as mitomycin-C (MMC) and 5-fluorouracil, inhibit fibroblast function when applied locally. However, because of their nonspecific mechanisms of action, these

\*Corresponding author.

agents can cause widespread cell death and apoptosis. This results in potentially sight-threatening complications such as severe postoperative hypotony, bleb leaks, and endophthalmitis (Yamanaka *et al*, 2015; Masompour *et al*, 2016; Lama and Fechtner, 2003).

Fibrin glue (FG) is a biological tissue adhesive which imitates the final stages of the coagulation cascade when a solution of human fibrinogen is activated by thrombin. The adhesive, sealing, and hemostatic properties of FG are particularly useful in many kinds of surgery. Fibrin glue is used for conjunctival closure in strabismus, vitrectomy, and trabeculectomy surgeries. Fibrin glue is highly biocompatible as well as completely biodegradable and has shown good results with little toxicity for use on the ocular surface (Tabele *et al*, 2012; Sakarya *et al*, 2011). Currently, there is no defined agent for blocking either vascular leakage or coagulation, which are the first steps in wound healing following trabeculectomy surgery. Sakarya *et al* (2011) hypothesized that application of subconjunctival FG following conventional trabeculectomy would create a biological spacer that facilitated hemostasis and humor aqueous outflow. Moreover, growth factors and cytokines released from FG may modulate wound healing by controlling hemostasis, inflammation, fibroblast proliferation, and regulate fibrosis formation in a time-dependent manner as fibrin clot degrade (Tabele *et al*, 2012; Sakarya *et al*, 2011; Jackson, 2001). A study conducted by Komaratih *et al* (2018) revealed that transplantation of FG itself or FG encapsulated limbal mesenchymal stem cells had a similar effect in reducing bleb fibrosis area in rabbit's eye. However, the role of the antifibrosis effects from FG remained unknown (Komaratih *et al*, 2018). In this study, we created self-made fibrin glue generated from the mixture of PRP derived fibrinogen and PPP derived thrombin to analyze its anti-fibrosis effect on HTFs in glaucomatous eyes. We describe the properties of these FG treated HTFs in assays for proliferation, cell migration, collagen deposition and degradation and collagen gel contraction. We compared these effects against MMC as the 'gold standard'.

## MATERIALS AND METHODS

The main reagents included Type I collagenase (Roche USA), alpha modified eagle medium ( $\alpha$ -MEM, Gibco-Life Technologies, USA), nonessential amino acid (NEAA, Sigma, USA), Trypsin (Gibco - Life Technologies, USA), fetal bovine serum (FBS, Biowest, USA), basic fibroblast growth factor (bFGF, Gibco- Life Technologies, USA), Insulin-transferin-selenium (ITS, Gibco- Life Technologies, USA), rat tail collagen type I, 3-(4,5-dimethylthiazol-2-yl)-2,5-diphenyltetrazolium

bromide (MTT; Gibco- Life Technologies, USA), anticoagulant citrate phosphate dextrose acid (CPDA), CaCl<sub>2</sub> (sigma). Primary FITC antibodies for vimentin and secondary antibodies were purchased from BIOCSS (USA).

## METHODS

### Study design

This is an *in vitro* study of HTFs in the glaucomatous eye that was conducted at the Stem Cell research and development center, Universitas Airlangga. All experiments conformed to the local ethics review board from the dr. Soetomo Hospital. Human tenon's fibroblast and peripheral blood was obtained from the same subject. HTFs culture was divided into 3 groups which consisted of a control group treated with 2% FBS in culture media, MMC treated group and FG treated group. Cell viability was evaluated after the 3rd day following treatment. Wound scratch assay was performed for each group and cell migration rate, collagen deposition, and degradation assays, and cell contractility were all measured 7 days after treatment.

### Fibrin glue preparation

Fibrin glue was generated according to the protocol established by Komaratih *et al* (2018). Nine milliliters of blood was withdrawn from the peripheral vein using a sterile syringe containing 1 ml CPDA. Following gentle agitation, the blood was placed into a sterile tube at -4°C overnight. The plasma separated from the erythrocyte, the blood was further centrifuged at 40 g for 10 minutes to obtain a workable amount of plasma. The plasma was stored at -20°C for 24 hours and then centrifuged at 6500 g for 5 minutes at 4°C. Following centrifugation, 2/3 parts of the plasma was removed, 1/3 parts as platelet rich plasma (PRP) was stored to prepare thrombin, and pellets were collected and stored at -30°C as the fibrinogen component for fibrin glue. Thrombin was isolated by mixing PRP with 10% CaCl<sub>2</sub>. Fibrin glue was then generated by mixing fibrinogen and thrombin (Komaratih *et al*, 2018).

### Isolation of HTFs

The Tenon's biopsies were collected from 2 female patients (n = 2) aged 25-40 years, who had been diagnosed with advanced open-angle glaucoma, while having no previous surgical therapy, and were undergoing trabeculectomy. The isolation of cells was conducted according to the protocol established by Przekora *et al* (2017) with our modification. The tissues were washed twice with PBS and cut into 2 pieces using a sterile scalpel. These were placed in separate wells of a 12-



well plate using light pressure and were left to air dry for up to 1 min while being attached to the well bottom. The tissues were then cultured in media containing  $\alpha$ -MEM, 1% penicillin-streptomycin, 1% amphotericin B, 1% NEAA, 8% FBS, 5  $\mu$ g/mL ITS and 5 ng/mL bFGF. After 5 to 7 days of culture, the cells were harvested and passaged. To confirm the fibroblast phenotype, cells were characterized at passage 3 for the expression of vimentin FITC antibody. Stained cells were visualized under a fluorescence microscope (BH2-RFL-T3 model fluorescence attachment, Olympus).

### Cell viability, collagen degradation and collagen deposition

HTFs of P4 were seeded in a 96 multi-well plate with  $5 \times 10^3$  cells/well, with a complete culture media for 24 hours. Treatment with 2% FBS as a control group, as well as MMC and FG were given to each group. Cell viability was determined after 3 days of treatment by 3-(4,5-dimethylthiazol-2-yl)-2,5-diphenyltetrazoliumbromide (MTT) assay, according to the method utilized by Freshney (2000). Collagen degradation and deposition were determined after 7 days of treatment using a Sirius red binding assay, following the method used by Heng *et al* (2006) and Taskiran *et al* (1999), respectively. The concentration of type I collagen degradation and deposition were determined according to the standard curve established from rat tail collagen type I (Freshney, 2000; Heng *et al*, 2006; Taskiran *et al*, 1999).

### In vitro scratch assay

HTFs at  $3 \times 10^5$  cells/well were seeded into six-well culture dishes and allowed to attach and grow to confluence. The cells were then scratched wounded using a yellow pipette tip and washed with a medium to remove loose or dead cells. Treatment with 2% FBS was done as a control group, while MMC and FG were given to each group for 7 days. Cell migration rates were analyzed according to Freshney (2000). The wound at the same spot, marked by a reference line drawn on the outside of the dish, was photographed at different time points on the 3<sup>rd</sup> and 7<sup>th</sup> day after treatment. This was done with a phase-contrast microscope equipped with a camera. Two different fields of each scratch wound were photographed and each condition was performed in triplicate. The wound closure area was analyzed as a cell migration rate with Image J software. The data was expressed as averages of the percentage wound closure area at the measured time point over the original width at time 0 hour (Freshney, 2000).

### Cell contraction assay

To assess the influence of FG on HTFs contraction, we measured the contraction of HTFs-seeded collagen gels. First, HTFs were resuspended at a density of  $3 \times 10^5$  cells/mL with a complete culture media. Each gel was made from dialyzed collagen in 0.1% acetic acid and gently mixed. Sodium hydroxide (0.1 M) was then added to the gel to return the solution to a physiological pH and to precipitate the collagen. Thirty microliters of HTFs (at  $3 \times 10^5$  cells/mL) were then seeded into the neutralized gel and resuspended briefly. This was then added to a well from a 12-well plate and incubated at 37°C for 24 hours. Each treatment was then given into each collagen seeded HTFs. The fibroblast-populated collagen gels were incubated for 7 days. The images of contractile cells grown over a collagen-coated dish were taken with a digital camera. The images were then measured and assessed using ImageJ software by comparing the cell contractile area with the total area (Freshney, 2000).

### Statistical analysis

Statistical analysis was performed using SPSS version 19.0 software. One-way ANOVA or Kruskal Wallis test and post-hoc test with 95% confidence interval ( $p < 0.05$ ) was used to determine the statistical significance of differences of cell viability, collagen degradation and deposition and cell contraction among HTFs after treatment.

## RESULTS

### Human tenon's fibroblast isolation

This study successfully isolated HTFs in a relatively short time (an average of 7 days). This was required to reach the first monolayer at 90% confluency. Supplementation with bFGF and NEAA were able to promote cell proliferation while maintaining the cell's phenotype and viability. Immunofluorescent staining of vimentin, a specific marker of fibroblast, revealed that near 100% of the cells after passage-2 were vimentin-positive (Fig. 1).

### Viability and Migration of human tenon's fibroblast

The effect of FG on cell viability of HTFs culture is presented in Fig. 2. Cell viability of HTFs decreased after MMC treatment ( $54.88\% \pm 3.02\%$ ) compared to those with FBS 2% control group ( $90.04\% \pm 6.79\%$ ,  $p = 0.000$ ) and FG ( $72.40\% \pm 2.98\%$ ,  $p = 0.002$ ). However, there was a significant decrease in cell viability for MMC ( $p = 0.001$ ) and FG ( $p = 0.003$ ) when compared to the FBS 2% control group (Fig. 2).

MMC decreased cell migration rate on days 3 and 7, as compared to the FBS 2% control group and FG group

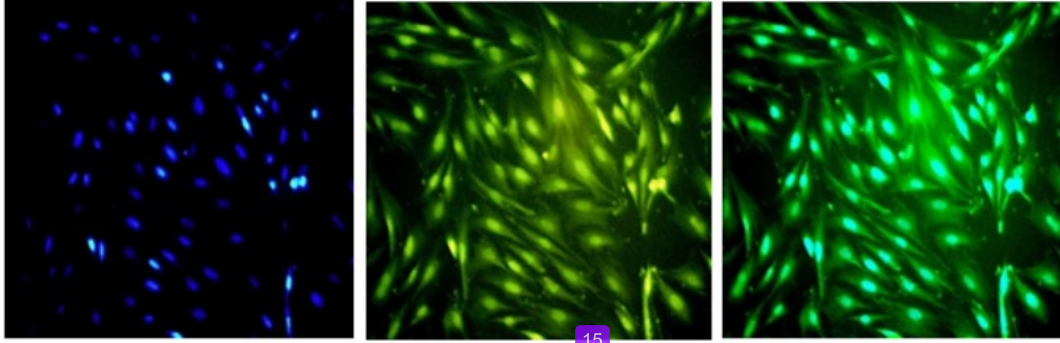


Fig. 1 : The cells were stained with Vimentin FITC conjugated antibody. Left section, cells were stained with DAPI; middle section with FITC labeled CD Vimentin; right section merge of the previous two sections (Inverted Fluorescence Microscope, 200x magnification).

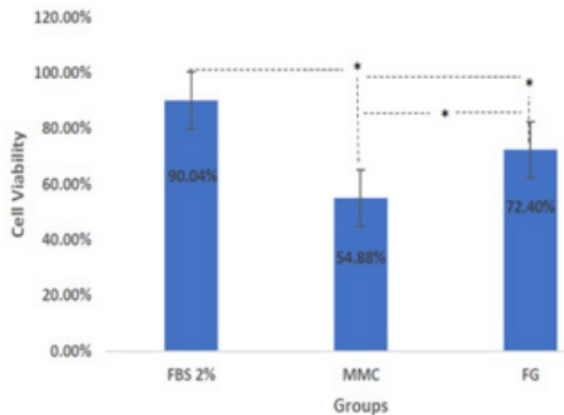


Fig. 2 : Effect of FG on cell viability of HTFs (Kruskal Wallis, Mann-Whitney, \*statistically significant).

(Fig. 3). Cell migration rate on days 3 in FG (13.24%) and MMC group (5.70%) were 3.6-fold and 8.3-fold lower than the FBS 2% control group (47.80%), respectively. Cell migration rate tended to increase on day 7 with 29.04%, 18.0%, 72.30% in the FG, MMC, and FBS 2% control group, respectively (Fig. 3).

#### Collagen deposition, degradation and cell contractility

MMC ( $18.54 \pm 1.54 \mu\text{g/mL}$ ) and FG ( $31.31 \pm 2.91 \mu\text{g/mL}$ ) had significantly decreased collagen deposition when compared to the FBS 2% control group ( $159.30 \pm 2.94 \mu\text{g/mL}$ ,  $p=0.001$ ). However, MMC group had the greatest effect on reducing collagen deposition compared to the FG group ( $p=0.01$ ) (Fig. 4).

MMC ( $98.43 \pm 2.14 \mu\text{g/mL}$ ) and FG ( $85.50 \pm 3.16 \mu\text{g/mL}$ ) had significantly increased collagen degradation compared to the FBS 2% group ( $39.59 \pm 2.74 \mu\text{g/mL}$ ,  $p=0.001$ ). Collagen degradation in MMC group was significantly higher compared to the FG group ( $p=0.03$ ) (Fig. 5).

MMC ( $29.21 \pm 5.96\%$ ) and FG ( $42.48 \pm 6.17\%$ ) had significantly decreased cell contractility compared to the

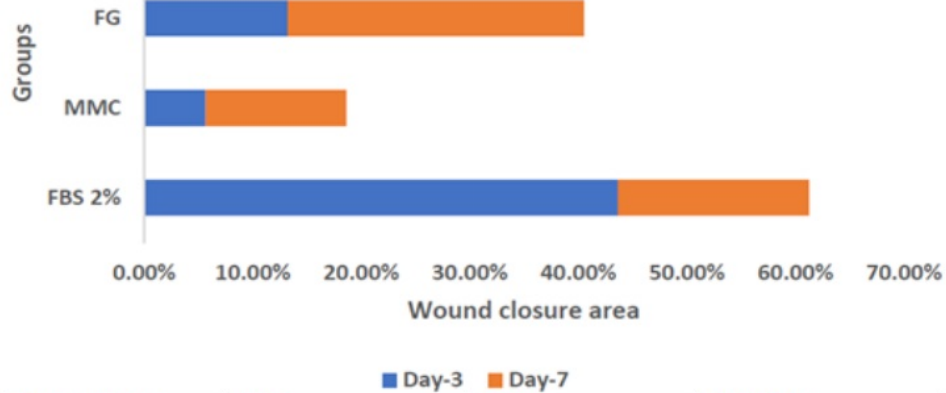
FBS 2% control group ( $65.03 \pm 4.23\%$ ,  $p=0.000$ ). Cell contraction in MMC was significantly lower than the FG group ( $p=0.01$ ) (Fig. 6).

#### DISCUSSION

We successfully generated self-made FG from the mixture of fibrinogen and thrombin-derived PRP using a modified simple cryoprecipitation method to improve antifibrosis secreted factor. Cryoprecipitation is one of the established methods for FG isolation. However, this preparation method remained inconsistent and this may be explained by the quality of the fibrinogen and variation in the additional factors that are present in the fibrinogen solution (Laurens *et al*, 2006; Zhao *et al*, 2008). Our modification in the FG isolation method was aimed at increasing fibrin associated matrix proteins, cytokines, proteases or protease inhibitors that may provide many functions in wound repair. This study revealed that FG was able to maintain HTFs cell viability compared to the MMC group, while FG proved its anti-fibrosis effect on HTFs. Fibrin glue decreased cell migration when compared to the FBS 2% control group. MMC had a better inhibitory effect on cell migration. Kim *et al* (2013) showed that fibrin glue provides a natural environment for cells because of its chemotactic, hemostatic, and mitogenic properties. Fibrin glue has been proven as an ideal cell delivery system, to improve cell incorporation and survival at an injured site. It was proposed that FG has no toxic effect on cells and that it may modulate cell activity through a cell-fibrin matrix interaction (Kim *et al*, 2013; Xie *et al*, 2012).

The wound healing consisted of four main phases including vascular leakage-coagulation, inflammatory, proliferative and remodeling. After injury, blood coagulation takes place and fibrin clots are formed to reduce blood loss. This is followed by an inflammatory phase where neutrophils, macrophages, and lymphocytes are attracted to the region. This leads to a proliferative



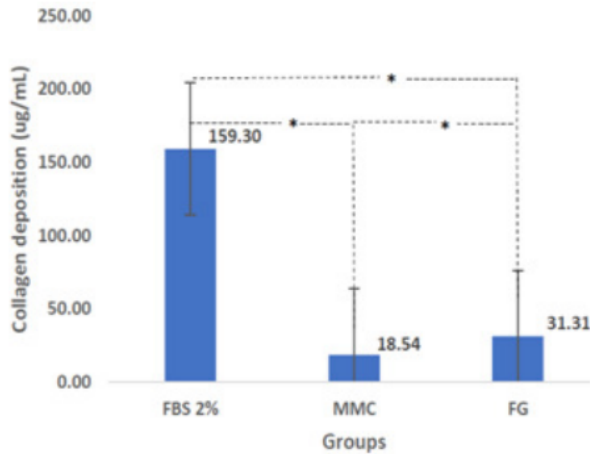


Observation	FG	MMC	FBS 2%
Day-3	13.24%	5.70%	47.80%
Day-7	29.04%	18.0%	72.30%
	0 hour	Days 3	Days 7
FG			
MMC			
FBS 2%			

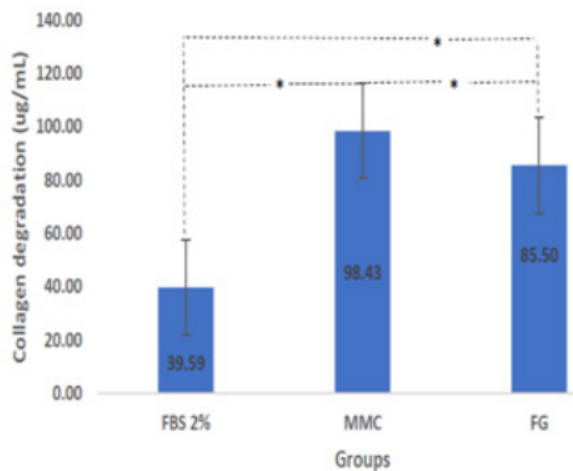
Fig. 3 : Cell migration rate on day- 3 and 7.

11 phase where fibroblasts migrate into the site of injury and re-epithelialization, angiogenesis and formation of granulation tissue occur. Finally, remodeling of the tissue occurs and involves the formation of scar tissue (Chen *et al*, 2006; Georgoulas *et al*, 2008; Rosentreter *et al*, 2010). Tenon's fibroblast is the key effector in the formation of fibrosis after trabeculectomy. Many different cells take part in the activation of fibroblast into myofibroblast, which is one of the most crucial events in

scar formation after trabeculectomy surgery. Myofibroblast initiates extracellular matrix (ECM) secretion and remodeling. The imbalance between proteolysis and anti-proteolysis enzymes leads to excessive ECM deposition, mainly collagen type I. The interaction between collagen type I and myofibroblast contributes to the matrix contraction during scar formation. MMC was still proven to be the "gold standard" in trabeculectomy to halt bleb fibrosis. Our study revealed

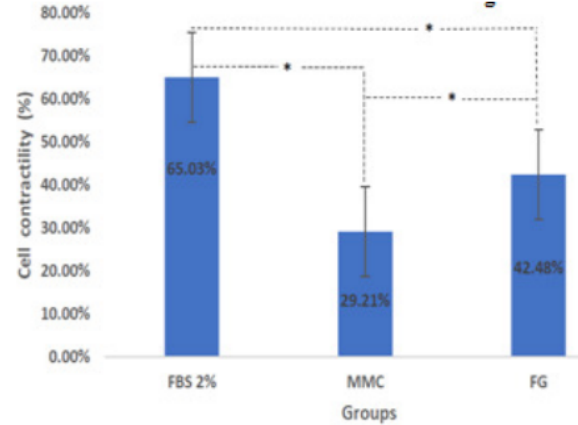


**Fig. 4 :** Collagen deposition (Kruskal Wallis, Mann-Whitney, \* statistically significant).



**Fig. 5 :** Collagen degradation (Kruskal Wallis, Mann-Whitney, \* statistically significant).

that MMC had the greatest antifibrosis effect on HTFs since its agent successfully decrease cell viability and inhibited cell migration in the wound scratch assay. However, reconstitution of cell migration appeared after the 7th day, which may indicate that the effect of its agent on cell migration activity is temporary (Arti *et al*, 2014; Mckleroy *et al*, 2013). Seet *et al* (2012) showed that MMC affects HTFs by inhibiting cell proliferation, inducing widespread apoptosis, increasing susceptibility to T cell-mediated lysis and reducing the production of pro-fibrotic genes and proteins. They also reduce cell migration. MMC treated HTFs inhibit type I collagen deposition following the induction of collagen degradation when compared to the FBS 2% control group and the FG treated group. However, MMC remained the best agent to inhibit type I collagen deposition compared to FG. MMC-treated HTFs were severely limited in the



**Fig. 6 :** Cell contractility (Tukey HSD, \* statistically significant).

ability to contract the collagen gel compared to the FBS 2% control group and FG group (Seet *et al*, 2012; Arti *et al*, 2014; Mckleroy *et al*, 2013).

Fibrin glue is composed of variable concentrations of thrombin and fibrinogen. Thrombin, as a protease, activates fibrinogen to form fibrin monomers that polymerize to become an unstable fibrin clot. Thrombin activates factor XIII, which then catalyzes the cross-linking between fibrin molecules, increasing the strength of the clot and providing protection from degradation. Clotted FG resembles the extracellular matrix produced during the early phases of wound healing which provides a “pseudomatrix” framework. This may allow the bypassing of much of the inflammatory phase, during which time the matrix would normally be created. This natural covering may help attenuate the inflammatory response which promotes other downstream pathway in a fibrosis event, mainly ECM remodeling. Inhibition of collagen deposition and collagen degradation stimulation by treated HTFs with FG indicates that its secreted factors might have a role in the balance of ECM reconstitution through proteolytic and anti-proteolytic enzyme activity (Sakarya *et al*, 2010; Ruggiero *et al*, 2008; Bahar *et al*, 2006). This result was in line with Sakarya *et al* (2011), who revealed that the mass of fibrin glue itself may contribute to the formation of a successful bleb since we have evidence that subconjunctival placement of a biodegradable implant both helps formation of successful bleb and decreases subconjunctival fibrosis. Fibrin glue releases IGF-1, HGF and HGF-like proteins, that play an important role in the proliferation phase by activating tenon fibroblast proliferation and migration. IGF-1 activates fibroblast proliferation through the tyrosine kinase pathway (Noori *et al*, 2017; Wang *et al*, 2017; Sakarya *et al*, 2011). Hepatocyte growth factor plays an important role in cell survival, regeneration,

antiinflammation and antifibrosis by tyrosine phosphorylation signal activation. Extracellular matrix proteolysis is one of the biological processes governed by HGF action. Matsumoto *et al* (2014) showed that in phase I/II of clinical trials, the recombinant HGF proteins were able to promote regeneration and inhibit fibrosis progression in amyotrophic lateral sclerosis (Wang *et al*, 2017; Matsumoto *et al*, 2014).

Fibrin glue significantly inhibits collagen synthesis in line with the induction of collagen degradation in HTFs. This study was consistent with Eby *et al* (2001) for the application of fibrin glue after CO<sub>2</sub> laser resurfacing on the skin had diminished the acute and chronic inflammatory response, enhanced neovascularization, and reduced collagen accumulation. Collagen formation is necessary for adequate wound healing (Noori *et al*, 2017; Eby *et al*, 2001). The continuation of the wound healing process is regulated by the cells that are involved in the initial inflammatory response. Therefore, the decrease in collagen production may be a direct result of the diminished inflammatory response noted in the fibrin glue application. Fibrin glue significantly inhibits collagen gel contraction in collagen populated HTFs. This modest decrease in collagen deposition may benefit wound healing by minimizing scar formation and wound contracture (Sakarya *et al*, 2011; Eby *et al*, 2001).

The remarkable advantage of self-made fibrin glue is that it can be obtained at a relatively low cost while being simple and autologous. It also avoids the potential risks of foreign body reaction and virus infection. A commercially available product of fibrin glue is specifically designed for adhesion of tissues or organs. These findings are somewhat surprising since one would not predict that an agent used to promote fibrotic wound repair would inhibit the fibrotic activity of HTFs. However, the exact mechanism of FG in fibrosis inhibition remains unknown. The critically important message, however, is that although FG has generally been discussed as if it were a single entity, it represents a mixture of fibrinogen and thrombin that may either promote or inhibit wound repair processes. Without precise purification procedures and rigorous quality control of the resulting FG preparation, it would be expected that FG preparation would have variable effects on wound repair. The hope is to develop "specific" preparations of FG that might be most effective for wound repair, especially for fibrosis inhibition.

### CONCLUSION

Fibrin glue exerts antifibrosis effects on HTFs of a glaucomatous eye, presumably by inhibiting collagen synthesis and cell contraction following collagen

degradation activity. Fibrin glue may regulate proteolysis and anti-proteolysis activity in HTFs culture through an undetermined pathway. There are no toxic effects of FG since it maintains cell viability and migration capacity. However, MMC remains the best agent to inhibit fibrosis on HTFs in this study.

### ACKNOWLEDGEMENT

We are thankful to Airlangga Health Science Institute Research Grant for their assistance in this study.

### REFERENCES

- Arti A, Antoine A F, Douwe E and Martin J (2014) Interaction between myofibroblasts and stem cells in the fibrotic heart: balancing between deterioration and regeneration. *Cardiovascular Research* **102**, 224–231.
- Bahar I, Weinberger D and Lusky M (2006) Fibrin glue as a suture substitute: histological evaluation of trabeculectomy in rabbit eyes. *Curr Eye Res.* **31**, 31–36.
- Chen H S, Ritch R, Krupin T and Hsu W C (2006) Control of filtering bleb structure through tissue bioengineering: an animal model. *Invest Ophthalmol Vis Sci.* **47**, 5310–5314.
- Cordeiro M F, Chang L, Lim K S, Daniels J T, Pleass R D and Siriwardena J T (2000) Modulating conjunctival wound healing. *Eye* **14**, 536–547.
- Eby, Antonio Navarro and Andrea Dunkelman (2001) The Effect of Fibrin Sealant on the Healing of Laser-resurfaced Skin. *Aesthetic Surg J.* **21**, 509–517.
- Freshney R I (2000) Cytotoxicity. *Culture of animal cell: a manual of basic technique.* 4th ed. New York: Wiley-Liss, 329–44.
- Georgoulas S, Dahlmann-Noor A, Brocchini S and Khaw P T (2008) Modulation of wound healing during and after glaucoma surgery. *Prog Brain Res.* **173**, 237–254.
- Heng E, Huang Y and Black J R (2006) CCN2, Connective tissue growth factor stimulates deposition by gingival fibroblast via module 3 and alpha6 and alpha1 integrins. *J Cell Biochem.* **89** (2), 490–20.
- Jackson M R (2001) Fibrin sealants in surgical practice, An overview. *Am J Surg.* **182**, 1S–7S.
- Kim L, Lee S K, Yoon J I, Kim D E, Kim M and Ha H (2013) Fibrin glue improves the therapeutic effect of MSCs by sustaining survival and paracrine function. *Tissue engineering part a* **19**(21–22), 2373–2381.
- Komarath E, Rindiasuti Y, Eddyanto, Susilowati H, Hendrianto E, Suhendro G and Rantam F (2018) Fibrin glue (FG) encapsulated limbal mesenchymal stem cells (LMSCS) decrease bleb fibrosis area after trabeculectomy through TGF- $\beta$  and MMP-9 modulation. *Asian Jr. of Microbiol Biotech Env Sc.* **20**, S66–S73.
- Lama P J and Fechtner R D (2003) Antifibrotics and wound healing in glaucoma surgery. *Surv Ophthalmol.* **49**(3), 314–346.
- Laurens, Koolwijk and Maat (2006) Fibrin structure and wound healing. *J ThrombHaemost* **4**, 932–939.
- Masompson M B, Nowroozadeh M H and Razeghinejad M R (2016) Current and future techniques in wound healing modulation after glaucoma filtering surgeries. *The Open Ophthalmology Journal* **10**(1), 68–85.
- Matsumoto K, Funakoshi H and Sakai K (2014) HGF-Met pathway



- in regeneration and drug discovery. *Biomedicines* **2**(4), 275-300.
- McKleroy W, Lee T and Atabai K (2013) Always cleave up your mess: targeting collagen degradation to treat tissue fibrosis. *Am J Physiol Lung Cell Mol Physiol.* **304**, L709-L721.
- Noori A, Ashrafi S J, Vaez R and Webster T J (2017) A review of fibrin and fibrin composites for bone tissue engineering. *International Journal of Nanomedicine* **12**, 4937-4961.
- Przekora A, Zamowski T and Ginalska G A (2017) Simple and effective protocol for fast isolation of human Tenon's fibroblasts from a single trabeculectomy biopsy—a comparison of cell behaviour in different culture media. *Cellular & Molecular Biology Letter* **22**(1), 5.
- Rosentreter A, Schild A M, Jordan J F, Krieglstein G K and Dietlein T S (2010) A prospective randomised trial of trabeculectomy using mitomycin C vs an ologen implant in open angle glaucoma. *Eye (Lond)* **24**, 1449–1457.
- Ruggiero R, Procaccini E and Piazza P (2008) Effectiveness of fibrin glue in conjunction with collagen patches to reduce seroma formation after axillary lymphadenectomy for breast cancer. *Am J Surg.* **196**, 170–174.
- Sakarya Y, Sakarya R and Yildirim A (2010) Sutureless amniotic membrane fixation with fibrin glue in symptomatic bullous keratopathy with poor visual potential. *Eur J Ophthalmol.* **20**, 249.
- Sakarya Y, Sakarya R, Kara S and Solyu T (2011) Fibrin glue coating of the surgical surfaces may facilitate formation of a successful bleb in trabeculectomy surgery. *Medical Hypothesis* **77**, 263-265.
- Seet L F, Su R, Toh L Z and Wong T T (2012) *In vitro* analyses of the anti fibrotic effect of SPARC silencing in human Tenon's fibroblasts: comparisons with mitomycin C. *Journal of Cellular and Molecular Medicine* **16**(6), 1245-1259.
- Tabèlè C, Montana M, Curti C, Terme T, Rathelot P, Gensollen S and Vanelle P (2012) Organic Glues or Fibrin Glues from Pooled Plasma: Efficacy, Safety and Potential as Scaffold Delivery Systems. *J Pharm Pharmaceut Sci.* **5**(1), 124-140.
- Taskiran D, Taskiran E, Yercan H and Kutay F (1999) Quantification of total collagen in rabbit tendon by the Sirius Red Method. *Tr. J. of Medical Sciences* **2**, 7-9.
- Wang L, Wang D B, Liu M Y and Yao R Y (2017) Correlation between tissue characterization and dynamic expression of MMP-2 and its tissue inhibitor in conjunctival filtering bleb of rats. *BMC Ophthalmology* **1054129**, 1-11.
- Xie X, Wang Y, Zhao C, Guo S, Liu S and Jia W (2012) Comparative evaluation of MSCs from bone marrow and adipose tissue seeded in PRP-derived scaffold for cartilage regeneration. *Biomaterials* **33**(29), 7008-7018.
- Yamanaka O, Izutani A, Tomoyose K and Reinach P S (2015) Pathobiology of wound healing after glaucoma filtration surgery. *BMC Ophthalmology* **15**(1), 1-9.
- Zhao H, Ma L and Zhou J (2008) Fabrication and physical and biological properties of fibrin gel derived from human plasma. *Biomed. Mater.* **3**, 1-9.

# Fibrin Glue (FG) Attenuates Fibrosis on Human Tenon's Fibroblasts (HTFS) of Glaucomatous Eyes Comparison With Mitomycin C

## ORIGINALITY REPORT

23%

SIMILARITY INDEX

10%

INTERNET SOURCES

20%

PUBLICATIONS

1%

STUDENT PAPERS

## PRIMARY SOURCES

- 1 J Eby. "The effect of fibrin sealant on the healing of laser-resurfaced skin", *Aesthetic Surgery Journal*, 2001  
Publication 3%
- 2 Clark, R. A. F.. "Fibrin glue for wound repair: facts and fancy :", *Thrombosis and Haemostasis*, 2003.  
Publication 3%
- 3 Anna Biernacka, Marcin Dobaczewski, Nikolaos G. Frangogiannis. "TGF- $\beta$  signaling in fibrosis", *Growth Factors*, 2011  
Publication 1%
- 4 Eby, J.B.. "The effect of fibrin sealant on the healing of laser-resurfaced skin", *Aesthetic Surgery Journal*, 200111  
Publication 1%
- 5 Haiguang Zhao. "Fabrication and physical and biological properties of fibrin gel derived from

# human plasma", Biomedical Materials, 03/2008

Publication

---

6	<a href="http://iovs.arvojournals.org">iovs.arvojournals.org</a> Internet Source	1%
7	<a href="http://www.mdpi.com">www.mdpi.com</a> Internet Source	1%
8	Submitted to Universitas Airlangga Student Paper	1%
9	<a href="http://bmcoophthalmol.biomedcentral.com">bmcoophthalmol.biomedcentral.com</a> Internet Source	1%
10	<a href="http://www.ncbi.nlm.nih.gov">www.ncbi.nlm.nih.gov</a> Internet Source	1%
11	Tine Van Bergen, Sarah Van de Velde, Evelien Vandewalle, Lieve Moons, Ingeborg Stalmans. "Improving patient outcomes following glaucoma surgery: state of the art and future perspectives", Clinical Ophthalmology, 2014 Publication	1%
12	Cynthia Yu-Wai-Man, Peng Tee Khaw. "Developing novel anti-fibrotic therapeutics to modulate post-surgical wound healing in glaucoma: big potential for small molecules", Expert Review of Ophthalmology, 2014 Publication	1%
13	<a href="http://onlinelibrary.wiley.com">onlinelibrary.wiley.com</a> Internet Source	1%

---



---

14 "Biomaterials for Cardiac Regeneration", Springer Science and Business Media LLC, 2015  
Publication 1%

---

15 [omicsonline.org](http://omicsonline.org)  
Internet Source <1%

---

16 [jurnal.ugm.ac.id](http://jurnal.ugm.ac.id)  
Internet Source <1%

---

17 [slidelegend.com](http://slidelegend.com)  
Internet Source <1%

---

18 [www.dovepress.com](http://www.dovepress.com)  
Internet Source <1%

---

19 Guru-Dutt Sharma, Jiucheng He, Haydee E. P. Bazan. "p38 and ERK1/2 Coordinate Cellular Migration and Proliferation in Epithelial Wound Healing", Journal of Biological Chemistry, 2003  
Publication <1%

---

20 "Biomimetic Medical Materials", Springer Science and Business Media LLC, 2018  
Publication <1%

---

21 Meng Li, Shilun Li, Yukun Li. "Liraglutide Promotes Cortical Neurite Outgrowth via the MEK–ERK Pathway", Cellular and Molecular Neurobiology, 2015  
Publication <1%

---

22	<p>Masako Fujioka-Kobayashi, Matthias Mottini, Eizaburo Kobayashi, Yufeng Zhang, Benoit Schaller, Richard J. Miron. "An in vitro study of fibrin sealant as a carrier system for recombinant human bone morphogenetic protein (rhBMP)–9 for bone tissue engineering", <i>Journal of Cranio-Maxillofacial Surgery</i>, 2017</p> <p>Publication</p>	<1%
23	<p><a href="http://www.derm.med.ed.ac.uk">www.derm.med.ed.ac.uk</a></p> <p>Internet Source</p>	<1%
24	<p><a href="http://www.ijretina.com">www.ijretina.com</a></p> <p>Internet Source</p>	<1%
25	<p><a href="http://translational-medicine.biomedcentral.com">translational-medicine.biomedcentral.com</a></p> <p>Internet Source</p>	<1%
26	<p><a href="http://complete.bioone.org">complete.bioone.org</a></p> <p>Internet Source</p>	<1%
27	<p><a href="http://journals.tubitak.gov.tr">journals.tubitak.gov.tr</a></p> <p>Internet Source</p>	<1%
28	<p>Submitted to iGroup</p> <p>Student Paper</p>	<1%
29	<p><a href="http://patents.google.com">patents.google.com</a></p> <p>Internet Source</p>	<1%
30	<p>P.-Y. Boey. "Imaging of blebs after phacotrabeculectomy with Ologen collagen matrix implants", <i>British Journal of</i></p>	<1%

31 Reza Zarei, Masoumeh Masoumpour, Sasan Moghimi, Ghasem Fakhraei, Yadollah Eslami, Masoud Mohammadi. "Evaluation of topical bevacizumab as an adjunct to mitomycin C augmented trabeculectomy", Journal of Current Ophthalmology, 2017 <1%  
Publication

---

32 "Regenerative Medicine - from Protocol to Patient", Springer Science and Business Media LLC, 2016 <1%  
Publication

---

33 [njl-admin.nihr.ac.uk](http://njl-admin.nihr.ac.uk) <1%  
Internet Source

---

34 Faiyaz Shakeel, Prawez Alam, Md Khalid Anwer, Saleh A. Alanazi, Ibrahim A. Alsarra, Mohammed H. Alqarni. "Wound healing evaluation of self-nanoemulsifying drug delivery system containing Piper cubeba essential oil", 3 Biotech, 2019 <1%  
Publication

---

35 [worldwidescience.org](http://worldwidescience.org) <1%  
Internet Source

---

36 [link.springer.com](http://link.springer.com) <1%  
Internet Source

---



37

[darwin.bth.rwth-aachen.de](http://darwin.bth.rwth-aachen.de)

Internet Source

&lt;1%

38

Haison Duong. "Modulation of 3D Fibrin Matrix Stiffness by Intrinsic Fibrinogen–Thrombin Compositions and by Extrinsic Cellular Activity", *Tissue Engineering Part A*, 07/2009

Publication

&lt;1%

39

Vincent Pertici, Jérôme Laurin, Tanguy Marqueste, Patrick Decherchi. "Comparison of a collagen membrane versus a fibrin sealant after a peroneal nerve section and repair: a functional and histological study", *Acta Neurochirurgica*, 2014

Publication

&lt;1%

40

Yuanyuan Guo, Shouxiang Ni, Weiyan Zhou, Jiangping Hou, Jiaquan Shen. "SPARC Levels Modulate the Capacity of Mitomycin to Inhibit the Proliferation of Human Tenon's Capsule Fibroblasts", *Journal of Ophthalmology*, 2020

Publication

&lt;1%

41

Yi-Hao Chen, Ching-Long Chen, Da-Wen Lu, Chang-Min Liang, Ming-Cheng Tai, Jiann-Torng Chen. "Silibinin Inhibits Platelet-Derived Growth Factor-Driven Cell Proliferation via Downregulation of N-Glycosylation in Human Tenon's Fibroblasts in a Proteasome-Dependent Manner", *PLOS ONE*, 2016

&lt;1%

42 Santo, Vítor E., Manuela Gomes, João Mano, and Rui L. Reis. "Controlled release strategies for bone, cartilage and osteochondral engineering – Part II: Challenges on the evolution from single to multiple bioactive factor delivery", Tissue Engineering Part B Reviews, 2012.  
Publication

---

<1%

43 [www.ecmjournal.org](http://www.ecmjournal.org)  
Internet Source

---

<1%

44 [www.thieme-connect.de](http://www.thieme-connect.de)  
Internet Source

---

<1%

45 Lecture Notes in Bioengineering, 2014.  
Publication

---

<1%

46 [www.ijo.cn](http://www.ijo.cn)  
Internet Source

---

<1%

47 Noura Abd El-Latif, Mohamed Abdulrahman, Mohamad Helal, Mohammed E. Grawish. "Regenerative capacity of allogenic gingival margin- derived stem cells with fibrin glue on albino rats' partially dissected submandibular salivary glands", Archives of Oral Biology, 2017  
Publication

---

<1%

48 Atsumu Kouketsu, Shinnosuke Nogami, Minami Yamada-Fujiwara, Hirokazu Nagai et al. "Clinical

---

<1%

evaluations of complete autologous fibrin glue, produced by the CryoSeal® FS system, and polyglycolic acid sheets as wound coverings after oral surgery", Journal of Cranio-Maxillofacial Surgery, 2017

Publication

---

---

Exclude quotes      On

Exclude matches      Off

Exclude bibliography      On