

## ARP Case Report n° 13: What is your diagnosis?

### *Caso Clínico ARP n°13: Qual o seu diagnóstico?*

Ana Catarina Silva

Serviço de Radiologia, Hospital Pedro Hispano, Matosinhos, Portugal

#### Presentation of the Case

A 73-year-old woman who has been consulting the gynaecologist regarding persistent pelvic pain since last month. No other complaints including systemic symptoms or metrorrhagia.

The ultrasound study showed a large pelvic tumour mass and it was not possible to determine the organ of origin. Values of Ca-125 are normal.

Pelvic MRI was requested for additional characterization of the pelvic mass and to determine the organ of origin.

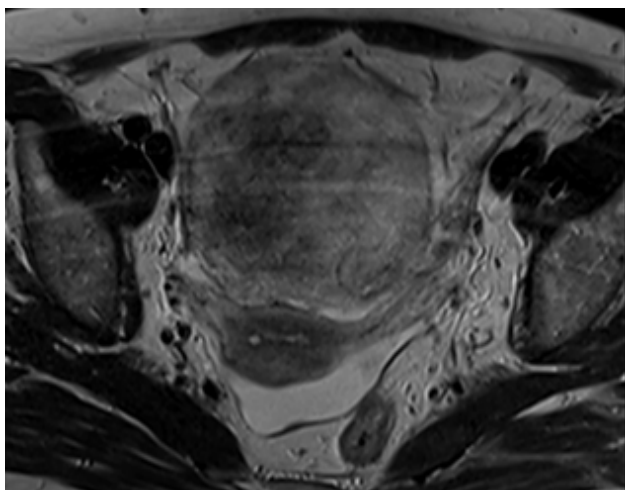


Figure 1 – Axial T2

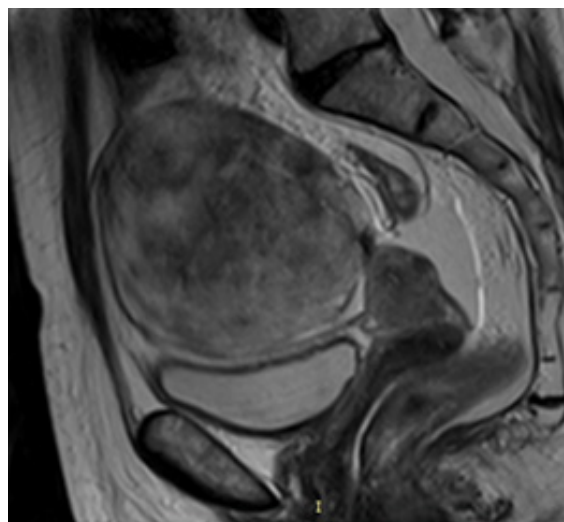


Figure 2 – Sagittal T2

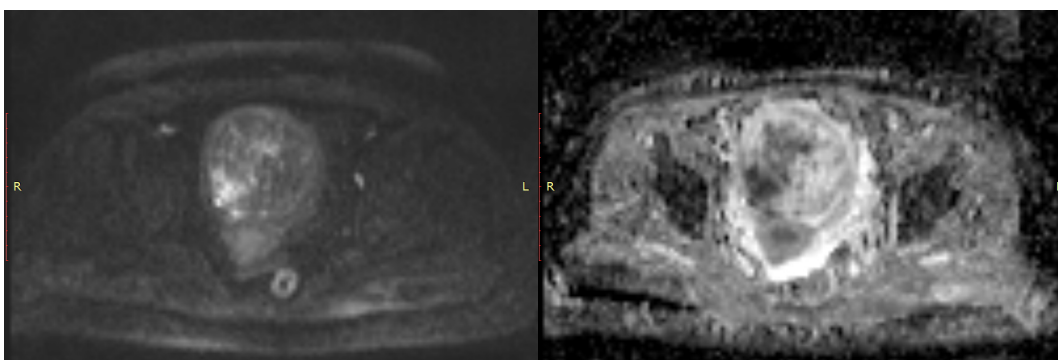
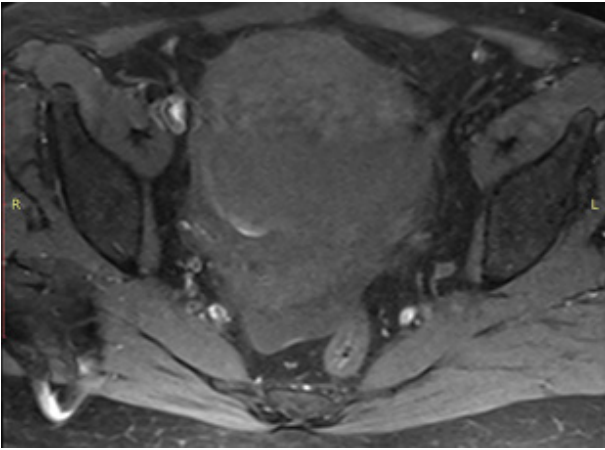
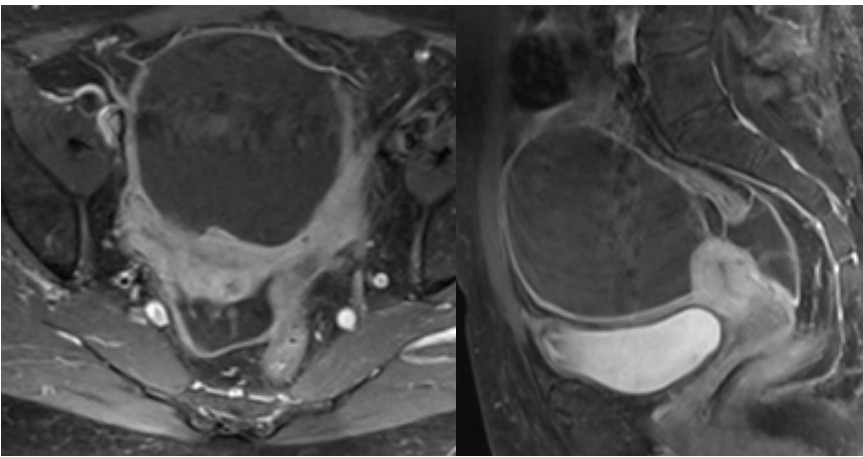


Figure 3 – Diffusion (b 1000) with corresponding ADC

Send your answer containing the diagnosis (s) to the email address [actarp.on@gmail.com](mailto:actarp.on@gmail.com).  
The names of the authors of the correct answers will be published in the next issue of the ARP in the case solution.



**Figure 4** – Axial T1 with fat saturation



**Figure 5** – Axial and sagittal T1 with fat saturation after administration of EV contrast