



Strathprints Institutional Repository

Reis, Ana Teresa and Coelho, João Pedro and Rucandio, Isabel and Davidson, Christine M. and Duarte, Armando C. and Pereira, Eduarda (2015) Thermo-desorption : a valid tool for mercury speciation in soils and sediments? Geoderma, 237-238. pp. 98-104. ISSN 0016-7061 , <http://dx.doi.org/10.1016/j.geoderma.2014.08.019>

This version is available at <http://strathprints.strath.ac.uk/52931/>

Strathprints is designed to allow users to access the research output of the University of Strathclyde. Unless otherwise explicitly stated on the manuscript, Copyright © and Moral Rights for the papers on this site are retained by the individual authors and/or other copyright owners. Please check the manuscript for details of any other licences that may have been applied. You may not engage in further distribution of the material for any profitmaking activities or any commercial gain. You may freely distribute both the url (<http://strathprints.strath.ac.uk/>) and the content of this paper for research or private study, educational, or not-for-profit purposes without prior permission or charge.

Any correspondence concerning this service should be sent to Strathprints administrator: strathprints@strath.ac.uk

1 **Thermo-desorption: a valid tool for mercury speciation in soils and**
2 **sediments?**

3

4 Ana Teresa Reis¹, João Pedro Coelho¹, Isabel Rucandio², Christine M. Davidson³,
5 Armando C. Duarte¹, Eduarda Pereira¹

6

7 ¹CESAM/Chemistry Department, University of Aveiro, Campus de Santiago, 3810-
8 193, Aveiro, Portugal

9 ²Spectroscopy Unit, Chemistry Division, Technology Department CIEMAT, Avda.
10 Complutense, 40 28040 Madrid, Spain

11 ³WestCHEM, Department of Pure and Applied Chemistry, University of
12 Strathclyde, 295 Cathedral Street, Glasgow G1 1XL, UK

13

14 **Corresponding Author:** Ana Teresa Reis (teresareis@ua.pt)

15 Phone: +351 234 370 737

16 Fax: +351 234 370 084

17

18

19 **Abstract**

20 Mercury (Hg) speciation by thermo-desorption is considered an alternative to
21 laborious sequential chemical procedures; hence its popularity has increased in the
22 last years. In this work, steps were taken to improve the information obtained by Hg
23 speciation through thermo-desorption, specifically to improve peak resolution and
24 increase the number of species that can be identified. The thermo-desorption
25 behaviour of Hg bound to iron oxides was characterized, as well as a new Hg-humic
26 acids synthetic standard material. In contrast to previous studies, the peak
27 corresponding to the Hg fraction associated with humic acids was clearly separated
28 from the mineral fraction, and identified in some natural samples. With increasing
29 temperature, Hg species are released in the following order: HgCl₂=Hg associated
30 with Fe₂O₃ < Hg associated with humic acids < HgS < HgO, with an overlap of HgCl₂
31 and Hg associated with iron oxides.

32 An evaluation of the effects of sample pre-treatment and storage on Hg speciation
33 was also performed. It was found that sieving to < 2 mm improved the sample

1 homogeneity. The importance of fast sample analysis was highlighted, given that
2 after 10 days of storage at room temperature, volatile Hg⁰ could no longer be
3 identified in the sample. The suitability of thermo-desorption for mercury speciation in
4 soils and sediments is discussed.

5
6 **Keywords:** Mercury; speciation; thermo-desorption; soil; sediment
7

8 **1 Introduction**

9

10 Soil and sediment mercury (Hg) contamination is a significant environmental
11 problem, in which interest has increased in the past decades due to the growing
12 awareness of the need for risk assessment and remediation of contaminated sites
13 (Ure and Davidson, 2002). Understanding mercury speciation is key for risk
14 assessment of mercury contaminated areas (Bollen et al., 2008) because, even
15 though Hg is an highly toxic element, its bioavailability, solubility, toxicological, and
16 ecological effects are largely influenced by speciation and the way the different
17 species interact with soil or sediment constituents (Biester et al., 2002a; Clarkson,
18 2002). These interactions are complex and many chemical, physical and biological
19 processes are involved. These processes are, in turn, dependent on soil and
20 sediment characteristics, especially pH, organic matter, chloride and sulfide content
21 (Biester et al., 2002b; Miretzky et al., 2005). The combination of these factors has, in
22 part, hindered the development of a harmonised protocol for Hg speciation, despite
23 the fact that this subject has been given considerable attention by several research
24 teams, as is evident in the review provided by Issaro *et al.* (2009). There are three
25 main approaches to Hg speciation in soil and sediment: 1) sequential chemical
26 extraction (Fernández-Martínez and Rucandio, 2013; Issaro et al., 2009); 2) X-ray
27 absorption spectroscopy (mainly XAFS and EXAFS) (Kim et al., 2000; Kim et al.,
28 2004); and 3) thermo-desorption (Biester and Scholz, 1997; Reis et al., 2012).
29 Sequential extraction procedures have several known limitations (Bacon and
30 Davidson, 2008), including non-specific removal of Hg species, as they distribute Hg
31 content into operationally defined fractions, instead of isolating specific chemical
32 species. Direct measurement of Hg species by XAFS is possible, but requires total
33 Hg concentration above 100 mg kg⁻¹, restricting its applicability to contaminated

1 sites. In the last decades, thermo-desorption has increasingly been used for Hg
2 speciation in solid matrices (Biester and Scholz, 1997; Bollen et al., 2008; Higuera
3 et al., 2003; Hojdová et al., 2008; Hojdová et al., 2009; Piani et al., 2005; Rallo et al.,
4 2010; Rumayor et al., 2013). This technique allows different Hg-binding forms to be
5 distinguished in soils and sediments based on the thermal release of Hg species.
6 Through comparison with standards, Hg species can be identified. Although it is a
7 promising technique for Hg speciation due to its simplicity, there are still some
8 inherent problems that prevent achieving its full potential, such as overlapping peaks
9 (Biester and Scholz, 1997; Reis et al., 2012).

10 In previous work, described in Reis *et al.* (2012), an alternative method for Hg
11 speciation in soils and sediments using a direct mercury analyser for Hg was
12 presented and its advantages over existing thermo-desorption methods mentioned.
13 The limitations of the approach were discussed as well, namely the difficulty of
14 distinguishing between HgCl₂ and Hg associated with organic matter, due to peak
15 overlap, and also the fact that only a limited range of standard materials were
16 analysed and characterised. Because Hg behaviour in soil and sediment is complex,
17 and many constituents may act as Hg sorbents, further method development has
18 been undertaken to try to expand the information that can be obtained. Two new
19 standard materials were considered: Hg associated with iron (III) oxide (Fe₂O₃) and
20 Hg bound to humic acids. The study of Hg-iron oxides complexes in soil and
21 sediment is important due to the role of iron oxides in controlling Hg mobility in these
22 matrices. Humic acids have been considered previously. In the previous work the
23 humic acid-Hg complex was obtained by extraction from a soil sample (Reis et al.,
24 2012) whereas, in this work, a synthetic humic acid sodium salt was used. Thus all
25 standards were of synthetic origin, and their composition known and well-
26 characterised.

27 The applicability of the method was tested by analysing soil and sediment
28 samples with different characteristics and Hg origins (natural vs. anthropogenic), and
29 a large range of total Hg content. Additionally the influence of sample pretreatment
30 and time between sampling and analysis were also assessed because it has been
31 reported that common pretreatment procedures such as air-drying, homogenisation,
32 sieving, or storage in plastic bags can be sources of error, particularly in the case of
33 volatile Hg⁰ that can easily be lost (Rasemann et al., 1995).

34

1 **2 Materials and methods**

2

3 **2.1 Sampling**

4 Samples were collected at Hg-contaminated sites with known different physico-
5 chemical characteristics and Hg sources.

6 Soil samples were collected in Estarreja, North-East Portugal (designated sample
7 Estarreja and another soil sample from this area was used to study the effect of
8 pretreatment and storage), from agricultural fields within a radius of < 1 km from a
9 chemical industrial complex. For many years this complex was home to a large
10 chlor-alkali plant which formerly produced chlorine and caustic soda using the Hg
11 cell process, where Hg was utilized as a cathode in the electrolysis of a saturated
12 brine solution (Ullrich et al., 2007). As other studies show Hg-cell chlor-alkali plants
13 have been identified as major sources of Hg to the environment (Reis et al., 2009;
14 Ullrich et al., 2007). Until 1975 the liquid effluents from this plant were transported for
15 several kilometres through the agricultural fields surrounding the industrial complex,
16 in man-made effluent streams, and directly discharged in Ria de Aveiro, a nearby
17 coastal lagoon, without any previous treatment.

18 Another set of soil samples was collected in the Caveira sulfide mine area, South-
19 East Portugal (samples Caveira 1 and Caveira 2), which is located in the Iberian
20 Pyrite Belt (IPB), a well-known mining district of worldwide significance, due to its
21 unusual concentration of large and medium sized mineral deposits, including ores of
22 copper, iron, lead, sulfur and zinc. Antimony, arsenic, cadmium, cobalt, gold,
23 mercury, selenium and silver can also be found in soils from the IPB (Barriga, 1990).
24 Past mining activities include pyrite (FeS_2) and copper (Cu) extraction (Barriga,
25 1990), resulting in the production of large tailing volumes (estimated to be larger than
26 2 Mt) (Cardoso Fonseca and Ferreira da Silva, 2000). Rainwater circulates and
27 percolates easily over and through these tailing materials causing significant erosion
28 and transport of tailings debris to areas nearby and downstream. Recent analysis
29 revealed that soils surrounding the mine have a high mercury content (Rodrigues et
30 al., 2010).

31 The Almadén mining district (Central Spain) was responsible for one-third of the
32 total world Hg production and is considered one of the most Hg-contaminated places
33 on Earth, due to its numerous Hg ore deposits, which have in common a simple

1 mineralogy that includes dominant cinnabar (HgS) and minor pyrite (FeS₂) (Higuera
2 et al., 2006). Asturias (Northern Spain) was also a site of abundant mining activities
3 due to the large number of Hg deposits, in the form of cinnabar, metacinnabar and
4 occasionally native mercury. The abandoned solid waste and industrial installations
5 are still present in agricultural and pastoral fields (Ordóñez et al., 2013). Although
6 these mines are now closed, soil metal contamination and acid mine drainage still
7 pose severe environmental problems at the sites. One sample from each site was
8 analysed (designated samples Almadén and Asturias).

9 Surface soil samples (0-15 cm) were collected and transported to the laboratory in
10 plastic bags. After they were air-dried (room temperature less than 20 °C), and
11 aggregates crushed, soils were sieved to < 2 mm using nylon sieves.

12 Additionally, three replicate cores of estuarine sediment were collected at the
13 Laranjo basin, the most Hg-contaminated area of Ria de Aveiro (Ramalhosa et al.,
14 2006), using a core drill of 7 cm diameter and 50 cm depth. The sediment cores
15 were then sliced into 1 cm layers for vertical profile characterization, the three
16 replicates of each layer depth were combined to create a composite sample, air-
17 dried (room temperature less than 20 °C), and sieved to < 1 mm using nylon sieve.

18

19 **2.2 Samples characterisation**

20 The soil and sediment pH (CaCl₂) was determined using a WTW pH meter-538,
21 according to the ISO 10390:1994 method.

22 For the determination of organic carbon content in soils (OrgC), an excess of 4
23 mol L⁻¹ hydrochloric acid was added to a crucible containing a weighed quantity of
24 soil or sediment in order to remove carbonates. The crucibles were left to stand for 4
25 hours at room temperature and at 16 hours at 60-70 °C, and the carbon content of
26 the residue was measured on an Elemental Analysis instrument (LECO CNH-2000),
27 according to ISO 10694:1995. Organic matter in sediments was estimated by loss on
28 ignition, placing the sediment in a muffle furnace at 550 °C, until constant weight
29 (approximately 6 hours). The amount of organic matter was estimated by the weight
30 difference between the dry sediment and the remaining ash (Heiri et al., 2001).

31 Sulfur content (S) was measured on an Elemental Analysis instrument (LECO
32 CNH-2000).

1 The pseudo-total contents of aluminium (Al), iron (Fe), and manganese (Mn) in
2 soils and sediments were extracted by aqua regia, as described in ISO 11466:1995,
3 and analysed by ICP–OES (ICP-OES Jobin Yvon Activa M, Burgener Mira Mist
4 nebulizer), according to ISO 11885:2007 (2nd edition). The operational conditions
5 used are summarized as follow: RF power: 1200 W; plasma gas flow (argon): 12 L
6 min⁻¹; sample flow rate: 1 mL min⁻¹.

7 Analytical working range for Al and Fe was 0.5 – 50 mg L⁻¹, and 0.05 – 10 mg L⁻¹
8 for Mn. Quantification limits were 0.5 mg L⁻¹ and 0.05 mg L⁻¹, respectively.

9 Amorphous iron (Fe_{ox}) and aluminium oxides (Al_{ox}) were determined by the
10 extraction of 2.5 g of soil with 50 mL of a 0.1 mol L⁻¹ oxalic acid solution (buffered to
11 pH 3 by ammonium oxalate) and shaken mechanically in the dark for 2 hours.
12 Aluminium and iron contents in the filtered extracts were analysed by ICP–OES
13 (aforementioned operational conditions). Two replicate extractions were performed
14 for each sample. Two extraction blanks were included in each batch of 20 bottles.

15 The particle size distribution and clay contents of the soil samples were
16 determined using a Coulter LS230 laser diffraction particle size (particle size
17 distribution of Asturias sample was not determined). The classification of soils
18 followed the USDA Texture Classes: sand fraction (0.050-2 mm), silt fraction (0.002-
19 0.050 mm), and clay fraction (< 0.002 mm). Classification of samples was achieved
20 by using the *Talwin 42*[®] classification software program. Fine particles (<63 µm) of
21 the sediments were determined by wet sieving, by weighing 5 g of dried sediments
22 (in duplicate) and sieving the sediment through a 63 µm sieve under a gentle water
23 flux (Pereira, 1996). The major advantage of this method is the disaggregation of the
24 sediments clusters, formed in the drying process of the sediments, which sometimes
25 it is impossible with the dry sieving. After sieving, the retained fraction (>63 µm) was
26 dried at 120 °C until constant weight and the fraction <63 µm was estimated by the
27 weight difference.

28

29 **2.3 Total mercury in soil and sediments**

30 Total Hg concentrations were determined by thermal decomposition atomic
31 absorption spectroscopy (AAS) with gold amalgamation (LECO[®], model AMA-254)
32 [1]. Briefly, the system consists of a nickel boat carrying the sample into a quartz
33 combustion tube in which the solid sample is initially dried (10 s) prior to

1 decomposition in an oxygen atmosphere, which for total Hg determination occurs at
2 750 °C (150 s). The mercury vapor produced is then trapped on the surface of a gold
3 amalgamator. After a pre-determined time interval (45 s), the amalgamator is heated
4 to 900 °C to quantitatively release the Hg, which is transported to a heated cuvette
5 (120 °C) prior to analysis by AAS using a silicon diode detector, at $\lambda=253.6$ nm.

6 **2.4 Mercury speciation by thermo-desorption**

7 Mercury speciation analysis was carried out using the solid fraction thermo-
8 desorption technique presented in previous work (Reis et al., 2012). Basically, this
9 method involves the thermal release of Hg compounds from the matrix, according to
10 their desorption temperatures. Briefly describing the procedure, once the solid
11 sample is placed in the equipment, temperature is increased from 76 °C to 768 °C
12 and results are depicted as Hg thermo-desorption curves (TDC), which show Hg
13 release (mg kg^{-1}) plotted against temperature (°C). The Hg species were
14 characterized by the temperature range at which they were released, from the
15 temperature at which thermal-release starts, through the peak maximum, to the point
16 where the curve returns to baseline. Synthetic standard materials were used to
17 identify Hg species. A detailed description of the development and validation of this
18 technique can be found in Reis *et al.* (2012).

19 In the part of this work already published (Reis et al., 2012) the thermal release
20 behaviour of HgCl_2 , Hg-humic acids (extracted from a soil) and (red-)HgS was
21 studied. Two new standard materials were now considered: iron (III) oxide (Fe_2O_3)
22 from Panreac and humic acid sodium salt, from Sigma Aldrich. Both were purchased
23 in technical grade and no further modifications were made. They were found to have
24 a total Hg content of 0.045 and 0.26 mg kg^{-1} , respectively.

25 Each standard or sample was analyzed at least three times, and depending on its
26 total Hg content, 0.5-40 mg were weighted for each thermo-desorption analysis.

27

28 **2.5 Effect of sample pretreatment and storage**

29 To test the effects that pretreatment and storage may have on Hg speciation, one
30 soil sample from Estarreja (the sampling location nearest to the laboratory, in order
31 to reduce to minimum the effects of transport) was collected, using the sampling
32 procedure described above, and brought to the laboratory where it was immediately
33 analysed (original sample – day 1). The same sample was then analysed after air-

1 drying for 24 hours and sieving to < 2 mm (day 2). This fraction was re-analysed
2 after 5 and 10 days. During this time, the sample was stored in a double plastic bag,
3 at room temperature. This storage procedure was chosen to mimic the typical one
4 used in soil sampling campaigns.
5

6 **2.6 Quality control and quality assurance**

7 Analytical procedures were conducted using ultra-clean glassware (Derquin 5%,
8 24 hours; HNO₃ 25%, 24 hours). Care was taken to avoid cross-contamination of the
9 samples.

10 The accuracy of the LECO AMA-254 was assessed daily by the analysis of
11 certified reference materials BCR-142R and CRM 021 for soil, and MESS-3 and
12 PACS-2 for sediment. Recoveries were within the certified confidence interval and
13 within the range of 82–117%.
14

15 **3 Results and discussion**

16 The thermo-desorption curves (TDC) obtained for standard materials are shown in
17 Figure 1. A full characterization of the thermo-release behaviour of HgCl₂ and
18 synthetic red-HgS can be found in previous work concerning the method
19 development and validation (Reis et al., 2012). In the same work, a standard of Hg
20 bound to humic acids (HgHA) was considered, with a release peak between 100 and
21 240 °C that overlapped HgCl₂. While that humic acid-Hg complex was obtained by
22 extraction from a soil sample, in the current work synthetic humic acid sodium salt
23 was used. In this case, Hg thermo-release behaviour occurs between 194 and 424
24 °C and is characterised by a main peak immediately followed by two smaller peaks
25 (Figure 2). To explain this three-step release behaviour it is important to consider
26 Hg²⁺-humic acids interaction. Humic acids offer more than one reactive site to which
27 Hg²⁺ can bind. Mercury will preferentially form covalent bonds with reduced sulfur
28 atoms in reactive sites, hence the overlapping of the second peak with that of HgS.
29 However, as only about 2% of these sites actively take part in the binding of
30 mercury, they easily become saturated and additional mercury ions have to bind to
31 oxygen- and nitrogen-containing groups, such as phenolic, carboxylic and amine
32 groups (Gismera et al., 2007). The different bound forms have different stability

1 constants, which lead to the three-step thermo-release of Hg from humic acids. The
2 comparison of the thermo-desorption curves of soil-extracted and synthetic HgHA
3 (Figure 2) shows the difference between the temperature releases. Humic acids
4 were extracted from soil using 1 mol L^{-1} HCl, which most likely extracted labile
5 species as well; therefore, soil-extracted HgHA is released at lower temperature than
6 synthetic HgHA.

7 Hg associated with iron oxides is mainly released between 100 and 285 °C, while
8 a second, much smaller peak can be observed at 500-610 °C. This overlaps with
9 HgCl_2 . Therefore, it will not be possible to distinguish the two compounds in a natural
10 sample. Still, characterisation of the sample and consideration of its origin may help
11 to infer the species that are most likely present, as will be exemplified below.

12

13 **3.1 Soil samples**

14 Estarreja soil is an acidic silt loam containing 1.7% organic carbon, 0.65% iron
15 oxide, and 0.11% sulfur (Table 1). Thermal-desorption occurred between 146 and 424
16 °C (Figure 3 a), although Hg was mainly released in the 146–320 °C temperature
17 interval, which is consistent with Hg associated with humic acids. This is in
18 accordance with the physical-chemical characterisation of the sample, as the acidic
19 pH favours the adsorption to organic matter, and this is in higher abundance than the
20 other soil components likely to bind Hg.

21 Soil sample Caveira 1 shows one major peak at 125-250 °C (Figure 3 b), which
22 overlaps HgCl_2 , Hg bound to iron oxides, and Hg associated with humic acids. This
23 means that Hg can either be chemically bound to functional groups of organic matter
24 or physically adsorbed to mineral surfaces, but it is difficult to distinguish the species.
25 In fact, both processes can happen, as Hg(II) -organic complexes may be specifically
26 adsorbed onto the mineral surfaces of the matrix, forming organo-mineral Hg
27 complexes. The soil characterisation, presented in Table 1, may help to interpret the
28 speciation, as the percentage of iron oxides (10.42%) is significantly higher than the
29 percentage of organic matter (0.51%). As there is no known possible source of
30 chloride at this location it is likely that Hg is mainly associated with iron oxides. There
31 is also evidence of the presence of cinnabar in the 400-600 °C interval.

32 Soil sample Caveira 2 shows three clearly distinguishable peaks (Figure 3 c). The
33 first, released at 120-210 °C is consistent with HgCl_2 or Hg bound to iron oxides. The

1 second peak suggests the presence of complexes of Hg with organic matter. The
2 last species that can be identified is possibly cinnabar. Although the TDC does not
3 completely match that of the HgS standard, it has been reported that Hg in natural
4 cinnabar is released at higher temperatures when compared to synthetic HgS
5 (Biester et al., 2000). This is mainly due to the breakdown of the cinnabar lattice, in a
6 process that causes the sudden release of 'pulses' of Hg; hence, decomposition
7 occurs in several steps, which explains the succession of "small peaks".

8 The thermo-desorption curves for Spanish mine soils from Asturias and Almadén
9 are presented in Figure 4 a and b, respectively. In the Asturias soil, the position of
10 the first peak suggests that Hg is associated not only with organic matter, but also
11 with iron; cinnabar was also identified in the sample, although in lower concentration.
12 Soil chemical composition corroborates the results of the thermogram, as Asturias
13 soil has 9.9% of organic matter and 4.3% of iron, and 0.23% of sulfur, three strong
14 mercury scavengers.

15 The Hg in Almadén soils seems to be present mainly as cinnabar, as would be
16 predicted considering the source of this sample is a former cinnabar mine.
17

18 **3.2 Sediment samples**

19 The total mercury vertical profile of the sediment core collected in Ria de Aveiro is
20 shown inset in Figure 5. The higher concentration between 20 and 30 cm
21 corresponds to the years of the more pronounced effluent discharges from the chlor-
22 alkali plant. In order to evaluate differences between top and deeper layers (less and
23 more contaminated layers), some sections were chosen for speciation analysis. The
24 mercury speciation results in the sediment vertical profile indicate that, with
25 exception of section 0-1 cm, thermo-desorption curves have one peak between 140
26 °C and 280 °C, indicating the occurrence of mercury associated with components
27 such as iron oxides, chloride ions, or organic matter. Sorption of Hg^{2+} on sediments
28 is a complex process controlled by a number of parameters, such as pH,
29 temperature, mercury concentration, composition of sediment and aqueous media,
30 presence of other cations (e.g. Fe^{3+} , Al^{3+} , Mn^{2+} , Ca^{2+}) and anions (such as S^{2-} , SO_4^{2-}
31) (Pelcová et al., 2010). Vegetated Ria de Aveiro sediments contain about 20-40%
32 organic matter and have iron oxide contents that range between 0.50 and 2.6%
33 (Table 1). Due to the high organic matter content, it would be expected that mercury

1 would be solely sorbed to that fraction, but this was not the case. Mercury sorption to
2 sediments is pH-dependent, and the pH in these sediments is close to neutral,
3 varying from 6.1 to 6.9 (Table 1), which favours sorption to mineral particles (Gabriel
4 and Williamson, 2004). Speciation of the superficial layer (0-1 cm) also revealed that
5 mercury is mainly present as organic complexes. HgCl_2 was not identified, but it can
6 be easily lost to the water column (HgCl_2 solubility in water is 7.4 g/ 100 mL, T=20
7 °C). Also, mercury sorption to iron oxides is diminished in the presence of chloride
8 ions (Skylberg, 2010). A second, smaller peak between 400 °C and 490 °C was
9 detected in all layers and can be attributed to the presence of mercury oxide (Biester
10 et al., 2000).

11

12 **3.3 Effect of sample pretreatment and storage on Hg speciation**

13 The effects of sample pretreatment and storage in Hg speciation were studied by
14 analysing a soil sample from Estarreja straight from the field (day 1), and then the <
15 2 mm fraction after air drying for 24 hours (day 2), 96 hours (day 5), and 10 days
16 (day 10). As the sample was collected in the summer, it air dried in less than 24
17 hours. Figure 6 shows the thermo-desorption curves for each day after sampling.
18 Surprisingly, a peak below 100 °C was identified, which should correspond to Hg^0
19 (Biester et al., 2000). This peak has not been observed in previous samples from the
20 same location. All other samples analysed and presented in Reis *et al.* (2012) and in
21 the current work were stored for longer periods; therefore, Hg^0 could have been
22 present in the samples but lost before analysis.

23 As can be seen in Figure 6, the thermo-desorption curve changes significantly
24 over the 10-day period. The disappearance of the Hg^0 peak is noticeable and it is
25 likely that the species is lost during storage, due to its extremely volatile character.

26 The total Hg and Hg^0 concentrations during the studied period are presented in
27 Table 2. During the 10-day period, almost 32% of total Hg were lost, which mainly
28 corresponds to the loss of Hg^0 (Table 2). This problem concerns not only Hg
29 speciation, but also total Hg determination in soils; often is not possible to analyse
30 samples immediately after sampling and these results show that Hg concentration
31 can be underestimated due to Hg losses during sample storage.

32 Another conclusion that can be drawn from Figure 6 is the higher heterogeneity of
33 the original sample, as revealed by the higher standard deviations (n=4). After drying

1 and sieving, the heterogeneity is reduced, as lower standard deviations were
2 achieved (n=4). Among the different species, Hg^0 has a higher associated standard
3 deviation. One possible explanation for this high heterogeneity may be in the origin
4 of Hg^0 . While Hg in soil is mostly present as Hg^{2+} associated with soil constituents
5 (organic matter, mineral particles), free or weakly bound Hg^{2+} can be reduced to Hg^0
6 (Robles et al., 2014); being an occasional phenomenon this causes the distribution
7 of Hg^0 in the soil to be uneven. Atmospheric deposition can also be considered as a
8 possible origin, since Hg^0 emissions are associated with chlor-alkali plants (Biester
9 et al., 2002b) and the presence of heterogeneously distributed Hg^0 in the soil
10 (Biester and Scholz, 1997).

11 It is noteworthy that 10 years after the change of production method from Hg to
12 membrane-cells in the Estarreja chlor-alkali plant, Hg^0 can still be found in the
13 surrounding environment, confirming the persistence of this element in the
14 environment.

15

16 **4 Conclusion**

17 This study allowed some conclusions to be drawn about Hg speciation in soils and
18 sediments using thermo-desorption. By using only synthetic standards materials, the
19 peak corresponding to Hg bound to organic matter was able to be separated from
20 other matrix constituents, which seemed a promising improvement in Hg speciation
21 by this technique. However, when natural samples were analysed, it was still
22 impossible to completely separate all Hg species. This indicates that thermo-
23 desorption cannot be considered a stand-alone tool in Hg speciation analysis.
24 Knowledge of the physico-chemical characteristics of the sample and of whether Hg
25 is of geogenic origin or results from anthropogenic input is useful to complement and
26 interpret the results. Samples where Hg was of geogenic origin showed higher
27 standard deviations between replicates. This was mainly due to the release of Hg in
28 cinnabar, which involves diffusion from inner-sphere sorption sites during the
29 breakdown of the mineral lattice.

30 This work also proved that samples stored in plastic bags need to be analysed
31 soon after collection, in order to obtain full information on Hg speciation. Longer
32 storage periods can result in loss of volatile Hg^0 . After only 10 days the peak
33 corresponding to Hg^0 no longer appeared in thermograms. Sieving to < 2 mm was

1 beneficial, as homogenation of the sample was improved. In future experiments
2 different storage and pretreatment conditions will be considered, such as the use of
3 different containers (e.g. amber or glass bottles), and the use of freeze-drying to dry
4 the soil.

5

6

7 **Acknowledgements**

8 This work was supported by European Funds through COMPETE and by National
9 Funds through the Portuguese Foundation for Science and Technology (FCT) within
10 project PEst-C/MAR/LA0017/2013, project SEPMERCURY – Sequential extraction
11 methods for assessing the origin, mobility and toxicity of mercury from contaminated
12 solid matrices and preparation of new sediment and soil reference materials
13 (PTDC/AAC-AMB/105157/2008), and via a PhD grant (SFRH/BD/43681/2008; A.T.
14 Reis).

References

- Bacon, J.R., Davidson, C.M., 2008. Is there a future for sequential chemical extraction? *Analyst*, 133(1), 25-46.
- Barriga, F., 1990. Metallogenesis of the Iberian Pyrite Belt. In: R.D. Dallmeyer, E. Martinez (Eds.), *Pre-mesozoic geology of Iberia*. Springer-Verlag, pp. 369-379.
- Biester, H., Gosar, M., Covelli, S., 2000. Mercury Speciation in Sediments Affected by Dumped Mining Residues in the Drainage Area of the Idrija Mercury Mine, Slovenia. *Environ Sci Technol*, 34(16), 3330-3336.
- Biester, H., Müller, G., Schöler, H.F., 2002a. Binding and mobility of mercury in soils contaminated by emissions from chlor-alkali plants. *Sci Total Environ*, 284, 191-203.
- Biester, H., Müller, G., Schöler, H.F., 2002b. Estimating distribution and retention of mercury in three different soils contaminated by emissions from chlor-alkali plants: part I. *Sci Total Environ*, 284(1-3), 177-189.
- Biester, H., Scholz, C., 1997. Determination of Mercury Binding Forms in Contaminated Soils: Mercury Pyrolysis versus Sequential Extractions. *Environ Sci Technol*, 31, 233-239.
- Bollen, A., Wenke, A., Biester, H., 2008. Mercury speciation analysis in HgCl₂-contaminated soils and groundwater - Implications for risk assessment and remediation strategies. *Water Res*, 42, 91-100.
- Cardoso Fonseca, E., Ferreira da Silva, E., 2000. *Projecto Estudo de Controle Ambiental nas Áreas Mineiras Abandonadas de Lousal e Caveira*. Unpublished.
- Clarkson, T.W., 2002. The three modern faces of mercury. *Environ. Health Perspect.*, 110, 11-23.
- Fernández-Martínez, R., Rucandio, I., 2013. Assessment of a sequential extraction method to evaluate mercury mobility and geochemistry in solid environmental samples. *Ecotox. Environ. Safe.*, 97, 196–203.
- Gabriel, M.C., Williamson, D.G., 2004. Principal Biogeochemical Factors Affecting the Speciation And Transport of Mercury through the terrestrial environment. *Environ Geochem Hlth*, 26(4), 421-434.
- Gismera, M.J., Procopio, J.R., Sevilla, M.T., 2007. Characterization of Mercury – Humic Acids Interaction by Potentiometric Titration with a Modified Carbon Paste Mercury Sensor. *Electroanal.*, 19(10), 1055-1061.
- Heiri, O., Lotter, A.F., Lemcke, G., 2001. Loss-on-ignition as a method for estimating organic and carbonate content in sediments: reproducibility and comparability of results. *J. Paleo.*, 25, 101-110.
- Higuera, P., Oyarzun, R., Biester, H., Lillo, J., Lorenzo, S., 2003. A first insight into mercury distribution and speciation in soils from the Almadén mining district, Spain. *J. Geochem. Explor.*, 80(1), 95-104.
- Higuera, P., Oyarzun, R., Lillo, J., Sánchez-Hernández, J.C., Molina, J.A., Esbrí, J.M., Lorenzo, S., 2006. The Almadén district (Spain): Anatomy of one of the world's largest Hg-contaminated sites. *Sci Total Environ*, 356(1–3), 112-124.
- Hojdová, M., Navrátil, T., Rohovec, J., 2008. Distribution and Speciation of Mercury in Mine Waste Dumps. *Bull Environ Contam Toxicol*, 80(3), 237-241.

- Hojdová, M., Navrátil, T., Rohovec, J., Penížek, V., Grygar, T., 2009. Mercury Distribution and Speciation in Soils Affected by Historic Mercury Mining. *Water Air Soil Pollut*, 200(1-4), 89-99.
- Issaro, N., Abi-Ghanem, C., Bermond, A., 2009. Fractionation studies of mercury in soils and sediments: A review of the chemical reagents used for mercury extraction. *Anal Chim Acta*, 631(1), 1-12.
- Kim, C.S., Gordon E. Brown, J., Rytuba, J.J., 2000. Characterization and speciation of mercury-bearing mine wastes using X-ray absorption spectroscopy. 261, 157-168.
- Kim, C.S., Rytuba, J.J., Brown, G.E., 2004. EXAFS study of mercury(II) sorption to Fe- and Al-(hydr)oxides: I. Effects of pH. *J. Colloid Interf. Sci.*, 271(1), 1-15.
- Miretzky, P., Bisinoti, M.C., Jardim, W.F., Rocha, J.C., 2005. Factors affecting Hg (II) adsorption in soils from the Rio Negro basin (Amazon). *Quim Nova*, 28, 438-443.
- Ordóñez, A., Álvarez, R., Loredó, J., 2013. Asturian mercury mining district (Spain) and the environment: a review. *Environ Sci Pollut Res*, 20, 7490–7508.
- Pelcová, P., Margetinová, J., Vaculovič, T., Komárek, J., Kubáň, V., 2010. Adsorption of mercury species on river sediments – effects of selected abiotic parameters. *Cent Eur J Chem*, 8(1), 116–125.
- Pereira, E., 1996. *Distribuição, Reactividade e Transporte do Mercúrio na Ria de Aveiro*, University of Aveiro, Aveiro, 284 pp.
- Piani, R., Covelli, S., Biester, H., 2005. Mercury contamination in Marano Lagoon (Northern Adriatic sea, Italy): Source identification by analyses of Hg phases. 20(8), 1546-1559.
- Rallo, M., Lopez-Anton, M.A., Perry, R., Maroto-Valer, M.M., 2010. Mercury speciation in gypsums produced from flue gas desulfurization by temperature programmed decomposition. *Fuel*, 89(8), 2157-2159.
- Ramalhosa, E., Pato, P., Monterroso, P., Pereira, E., Vale, C., Duarte, A.C., 2006. Accumulation versus remobilization of mercury in sediments of a contaminated lagoon. *Mar Pollut Bull*, 52(3), 353-356.
- Rasemann, W., Seltmann, U., Hempel, M., 1995. Statistical evaluation of the influence of several sample pretreatment methods on the mercury content detectable by chemical analysis of contaminated soil samples under practical conditions. *Fresen J Anal Chem*, 351(7), 632-641.
- Reis, A.T., Coelho, J.P., Rodrigues, S.M., Rocha, R., Davidson, C.M., Duarte, A.C., Pereira, E., 2012. Development and validation of a simple thermo-desorption technique for mercury speciation in soils and sediments. *Talanta*, 99, 363-368.
- Reis, A.T., Rodrigues, S.M., Araújo, C., Coelho, J.P., Pereira, E., Duarte, A.C., 2009. Mercury contamination in the vicinity of a chlor-alkali plant and potential risks to local population. *Sci Total Environ*, 407(8), 2689-2700.
- Robles, I., Lakatos, J., Scharek, P., Planck, Z., Hernández, G., Solís, S., Bustos, E., 2014. Characterization and Remediation of Soils and Sediments Polluted with Mercury: Occurrence, Transformations, Environmental Considerations and San Joaquin's Sierra Gorda Case. *Environmental Risk Assessment of Soil Contamination*.
- Rodrigues, S.M., Henriques, B., Coimbra, J., Silva, E.F.d., Pereira, M.E., Duarte, A.C., 2010. Water-soluble fraction of mercury, arsenic and other potentially toxic elements in highly contaminated sediments and soils. *Chemosphere*, 78, 1301-1312.

- Rumayor, M., Diaz-Somoano, M., Lopez-Anton, M.A., Martinez-Tarazona, M.R., 2013. Mercury compounds characterization by thermal desorption. *Talanta*, 114(0), 318-322.
- Skyllberg, U., 2010. Mercury Biogeochemistry in Soils and Sediments. In: S. Balwant, G. Markus (Eds.), *Developments in Soil Science*. Elsevier, pp. 379-410.
- Ullrich, S., Ilyushchenko, M., Kamberov, I., Tanton, T., 2007. Mercury contamination in the vicinity of a derelict chlor-alkali plant. Part I: Sediment and water contamination of Lake Balkyldak and the River Irtys. *Sci Total Environ*, 381, 1-16.
- Ure, A.M., Davidson, C.M., 2002. Chemical Speciation in Soils and Related Materials by Selective Chemical Extraction. In: A.M. Ure, C.M. Davidson (Eds.), *Chemical Speciation in the Environment*. Blackwell Science, London, UK, pp. 265-300.

Table 1. Soil and sediment samples characterisation.

PORTUGUESE SOIL SAMPLES										
Sample	Hg (mg kg ⁻¹)	pH (CaCl ₂)	Org C (%)	Fe (%)	Fe _{ox} (%)	S (%)	sand (%)	silt (%)	clay (%)	USDA texture class
Estarreja	1.2	4.8	1.66	1.14	0.65	0.11	18.62	71.00	10.38	silt loam
Caveira 1	6.9	3.3	0.51	4.2	10.42	<0.05	25.26	61.28	13.46	silt loam
Caveira 2	34.2	2.9	0.93	6.56	11.23	0.42	49.87	39.77	10.36	loam

SPANISH SOIL SAMPLES										
Sample	Hg (mg kg ⁻¹)	pH (CaCl ₂)	Org matter (%)	Fe (%)	S (%)	sand (%)	silt (%)	clay (%)	USDA texture class	
Asturias	153.6	6.5	9.9	4.26	0.23	-	-	-		
Almadén	64.8	5.4	1.3	2.7	0.12	43.16	30.6	26.24	loam	

SEDIMENT SAMPLES						
Sample depth	Hg (mg kg ⁻¹)	pH (CaCl ₂)	LOI (%)	Fe (%)	Fe _{ox} (%)	Fraction <0.63 µm (%)
Laranjo _{0-1cm}	8.8	6.5	41.2	3.19	1.89	33
Laranjo _{2-3cm}	4.3	6.1	30.2	4.03	2.54	34
Laranjo _{5-6cm}	6.3	6.1	22.5	3.56	2.56	21
Laranjo _{10-11cm}	5.8	6.2	28.4	3.28	2.17	26
Laranjo _{14-15cm}	11.5	6.1	31.2	3.39	0.57	30
Laranjo _{20-21cm}	6.9	6.2	31.3	3.47	0.56	20
Laranjo _{25-26cm}	50.9	6.4	32.8	4.04	0.58	32
Laranjo _{30-31cm}	26.1	6.8	30.7	3.94	0.52	26
Laranjo _{38-39cm}	0.7	6.9	26.4	3.15	0.50	28

Table 2. Evolution of total Hg and Hg⁰ concentrations (mean ± standard deviation; n = 4) with pretreatment and 10-day storage period.

	Total Hg (mg kg ⁻¹)	Hg ⁰ (mg kg ⁻¹)
Day 1	34.2 ± 2.8	9.5 ± 4.9
Day 2	32.6 ± 1.5	6.8 ± 1.3
Day 5	33.1 ± 1.5	8.9 ± 2.0
Day 10	23.4 ± 0.6	0.05 ± 0.01

FIGURE CAPTION

Figure 1. Thermo-desorption curves (average \pm standard deviation, $n=10$) for Hg species in synthetic standards materials: mercury chloride (HgCl_2) and cinnabar (HgS) – left Y axis; Hg bound to humic acids (HgHA) and to iron oxides (HgFe) – right Y axis.

Figure 2. Thermo-desorption curves (average \pm standard deviation, $n=10$) for Hg bound to humic acids: HgHA extracted from a soil (blue) (Reis et al., 2012) and synthetic (green).

Figure 3. Thermo-desorption curves of Portuguese soils (average \pm standard deviation, $n=3$). a) Industrial soil of Estarreja; b) Mine soil of Caveira 1; c) Mine soil of Caveira 2.

Figure 4. Thermo-desorption curves of Spanish mine soils (average \pm standard deviation, $n=3$). a) Asturias; b) Almadén.

Figure 5. Thermo desorption curves of Ria de Aveiro sediments vertical profile (average \pm standard deviation, $n=3$). Inset: total Hg concentration of the profile.

Figure 6. Thermo-desorption curve (average \pm standard deviation, $n=4$) of a soil sample where the effects of sample pretreatment and storage can be observed.

Figure 1

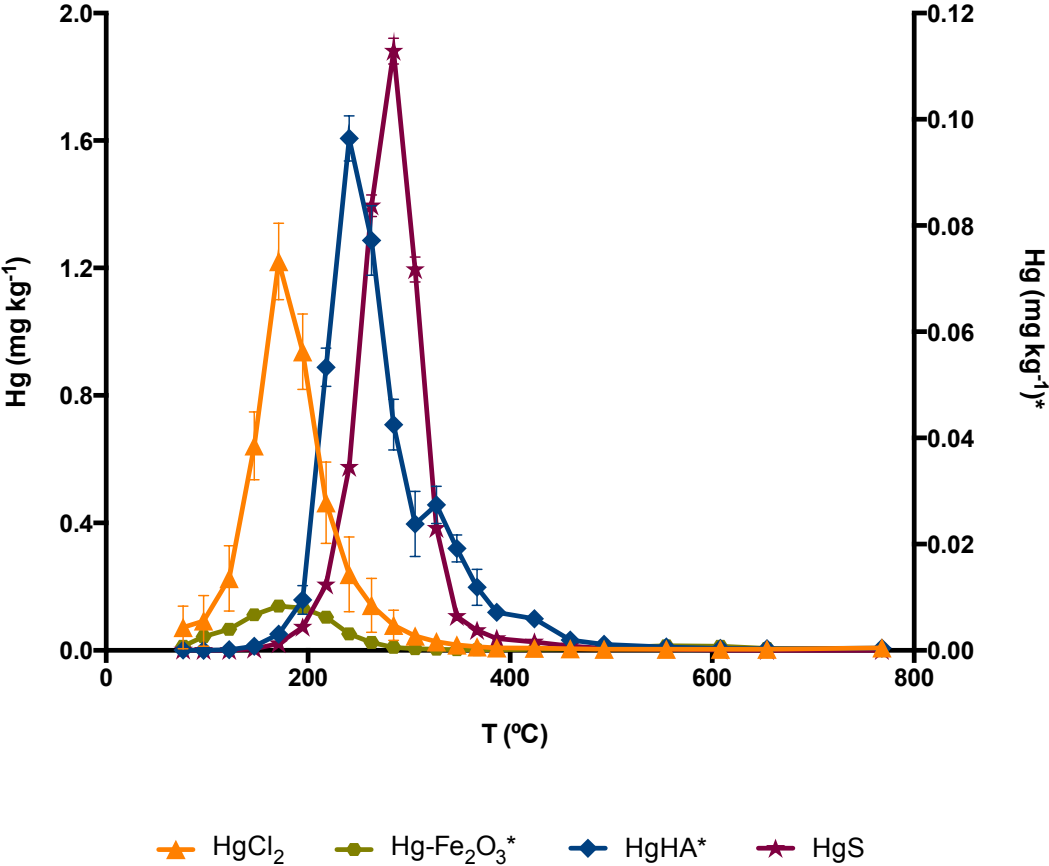


Figure 2

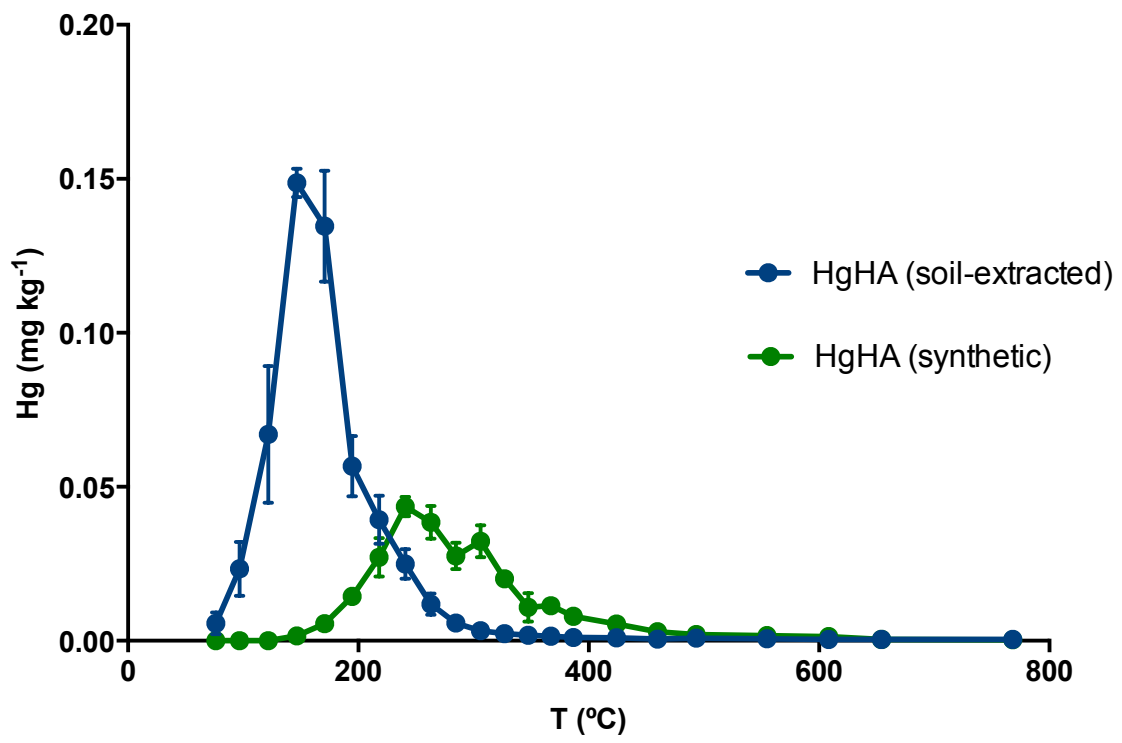


Figure 3

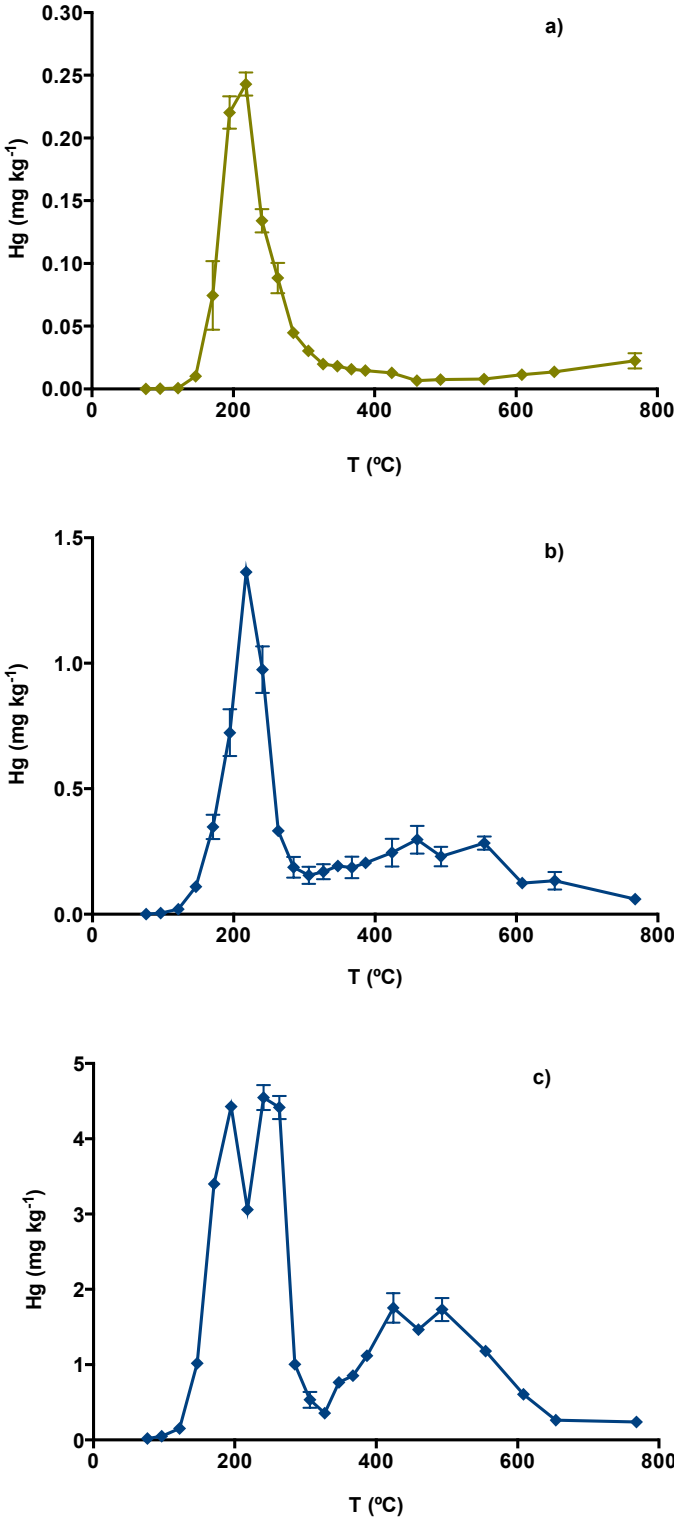


Figure 4

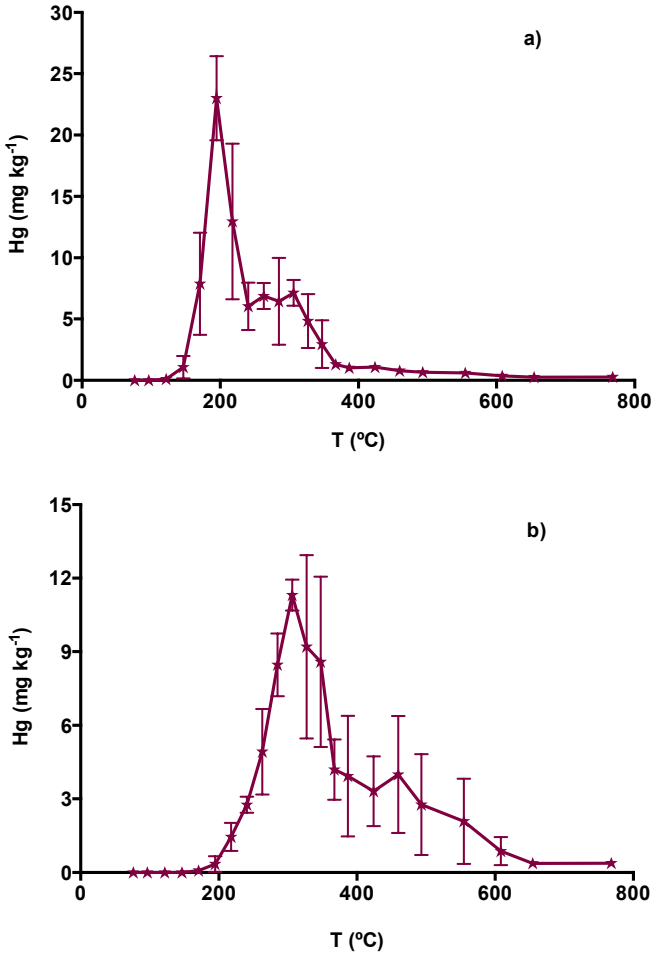


Figure 5

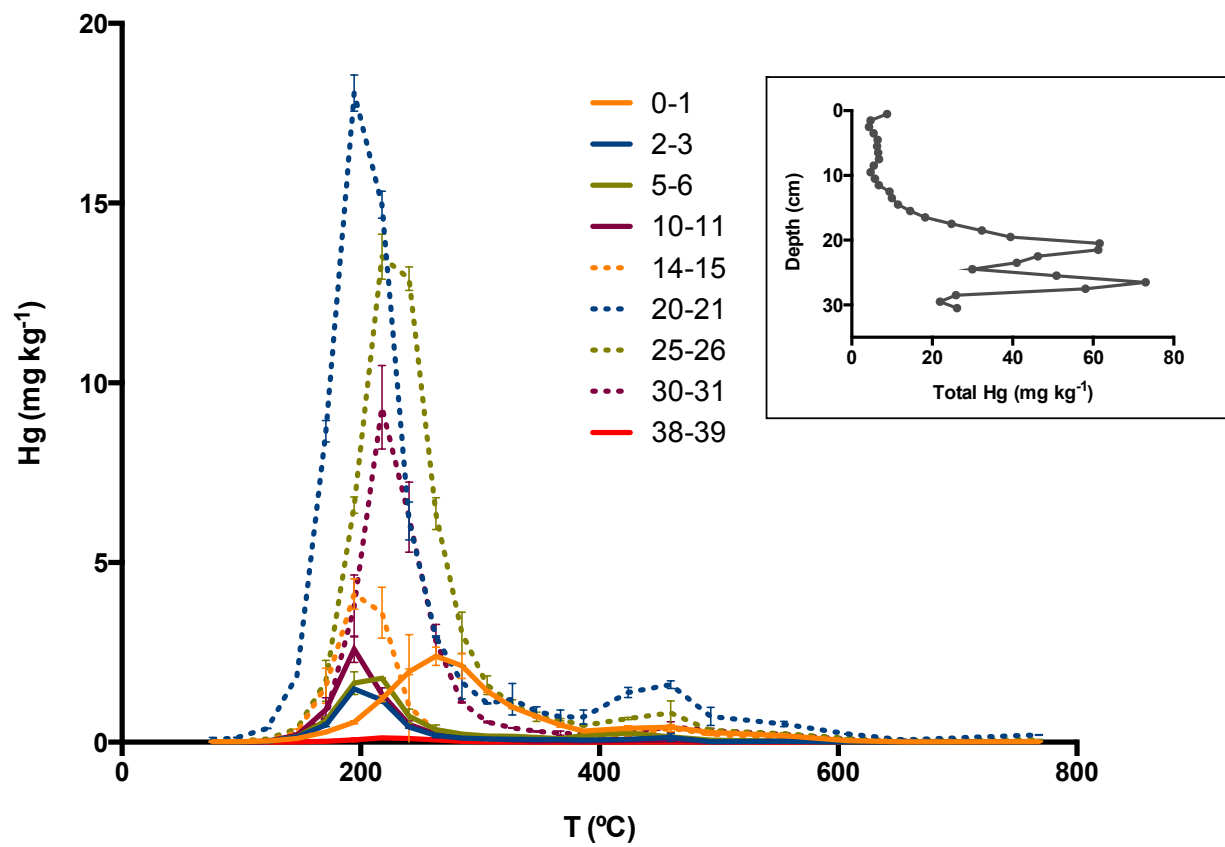


Figure 6

