

# Pleiotropic morphological and abiotic stress resistance phenotypes of the hyper-abscisic acid producing $Abo^-$ mutant in the periwinkle *Catharanthus roseus*

SHASHI PANDEY RAI, RAJESH LUTHRA, MADAN MOHAN GUPTA and SUSHIL KUMAR\*

Central Institute of Medicinal and Aromatic Plants, P.O. CIMAP, Lucknow 226 015, India

\*Corresponding author (Fax, 91-522-342666; Email, cimap@satyam.net.in).

The pleiotropic properties of a *abo abo* ( $Abo^-$ )  $\gamma$ -ray induced mutant of *Catharanthus roseus* cv. Nirmal, selected among the  $M_2$  generation seeds for ability to germinate at 45°C, are described. The mutant produced seeds possessing tricotyledonous embryos, unlike the typically dicotyledonous embryos present in the wild type  $Abo^+$  seeds. In comparison to  $Abo^+$  adults, the mutant plants had short stature and lanceolate leaves. The vascular bundles in the leaves and stem were poorly developed. Leaf surfaces were highly trichomatous, epidermal, cortex and mesophyll cells were small sized and a large majority of stomata were closed. Besides high temperature, the mutant was salinity and water-stress tolerant. The abscisic acid (ABA) content in the leaves was about 500-fold higher. The genetic lesion *abo* responsible for the above pleiotropy was recessive and inherited in Mendelian fashion. The seedlings and adult plants of the mutant accumulated higher proline than  $Abo^+$  plants. The phenotypes of *abo abo* mutants permitted the conclusions that (i) the mutant synthesizes ABA constitutively, (ii) both ABA-dependent and ABA independent pathways for proline and betaine accumulation are functional in the mutant, and (iii) cell division, elongation and differentiation processes in embryo and adult plant stages are affected in the mutant.

## 1. Introduction

It is established that plants can tolerate and adapt to sub-lethal levels of a variety of stresses, including the abiotic stresses caused by low and high temperature, drought, salinity and injury. The molecular mechanisms of adaptation to abiotic stresses in plants are quite complex. These have been shown to involve a cascade of events starting from the perception of stress to the expression of functions that mitigate the stress (Campalans *et al* 1999). The plants exposed to stress can modify their essential metabolic processes and in addition are able to synthesize enzymes (Mittler and Zilinska 1994; Williams *et al* 1994) and proteins (Rubio *et al* 1995; Close 1996) and metabolites (Delaunay and Verma 1993; Sakamoto and Murata 2000) that can regulate the expression of sensitive operons, repair cellular damage, restructure cell organelle(s) and/or help ward off stress. While some of the stress induced gene functions have been found to be common

for acclimation to cold, heat, desiccation and/or salinity, many are specific to the type of abiotic stress. Besides, the inducible adaptive responses, plants synthesize some of the stress mitigating gene products constitutively (Shinozaki and Yamaguchi-Shinozaki 1996).

Several lines of evidence implicate the phytohormone abscisic acid (ABA), synthesized from isopentenyl phosphate via  $C_{40}$  xanthophylls (Campalans *et al* 1999), could have a regulatory role in conferring stress tolerance in plants (Chandler and Robertson 1994; Leung and Giraudat 1998; Campalans *et al* 1999). The endogenous ABA levels are known to be high in plants undergoing cold, drought or salinity stress. The ABA-pretreated plants demonstrate tolerance to environmental stresses (Zeevart and Creelman 1988; Shinozaki and Yamaguchi-Shinozaki 1996). Some similarity has been observed between the protein profiles induced by stresses and those induced by application of ABA in unstressed plants (Söderman *et al* 1996; Hong *et al* 1997; Netting 2000). The ABA-deficient

**Keywords.** ABA over producer; *Catharanthus roseus* pleiotropic phenotype; stress tolerant; tricotyledonous seedling

(*aba*) mutants isolated in several plants are more stress-sensitive than their wild-types (Leotenberg *et al* 1999) because the proteins induced by stress conditions remain largely unexpressed in them (Chandler and Robertson 1994). There is as yet little evidence to relate any of the ABA-induced proteins either to stress tolerance or to recovery from stress.

A small number of ABA-deficient, ABA-insensitive ABA-hypersensitive and/or ABA deregulated mutants have become available in *Arabidopsis thaliana* (Koorneef *et al* 1984; Cutler *et al* 1996; Wu *et al* 1996; Hurry *et al* 1997; Schwartz *et al* 1997; Foster and Chua 1999; Quesada *et al* 2000), *Hordeum vulgare* (Raskin and Ladyman 1988), *Lycopersicon esculentum* (Linforth *et al* 1987; Burbidge *et al* 1998), *Nicotiana plumbaginifolia* (Rousselin *et al* 1992; Marlin *et al* 1996), *Pisum sativum* (Duckham *et al* 1989) and *Zea mays* (McCarty *et al* 1991; Sturaro *et al* 1996; Tan *et al* 1997). Their phenotypes have revealed roles of endogenous ABA in plants at post-embryo development stages seed maturation, onset and maintenance of dormancy (Garello and Le Page-Degivry 1999) and seed germination. The protein products of some of these genes have been identified and a few of them have also been cloned (Marlin *et al* 1996; Schwartz *et al* 1997). The analysis shows that typically ABA interacts with G-box ACGT core motifs and transcription factor at promoter site to activate transcription of gene(s) (Ono *et al* 1996; Busk *et al* 1997; Guan *et al* 2000; Lopez-Molina and Chua 2000). Fuller description of the ABA roles in plants awaits isolation of mutants of ABA-biosynthesis, ABA-metabolism, and signal transduction process possessing new phenotypes and identification of phenotypes of mutants affected in the ABA regulated genes expressed in vegetative tissues in plants.

Periwinkle *Catharanthus roseus* a diploid ( $2n = 16$ ), small sized, self compatible and rapidly recyclable plant and the only source of potent anticancer drugs vinblastine and vincristine, is emerging as a model experimental system for the analyses of developmental and environmental controls on plant secondary metabolism (Vazquez *et al* 1997; St. Pierre *et al* 1999). The chemistry of the indole terpenoid alkaloids has been investigated extensively (Blasko and Cordell 1990; DeLuca 1993). Exposure of the periwinkle cell and organ cultures to a variety of stress conditions or supplementation with ABA is known to increase the expression of the alkaloid biosynthetic pathway (Smith *et al* 1987; Blasko and Cordell 1990; DeLuca 1993). In our investigations to genetically modulate the expression of secondary metabolism, a number of phenotypically different mutants have been isolated in *C. roseus*. The present work reports on the isolation and characterization of a mutant in *C. roseus* in which a recessive allele at a locus confers ABA-overproduction and abiotic stress resistance.

## 2. Materials and methods

### 2.1 Mutagenesis

The Abo<sup>-</sup> mutant was isolated in the background of *C. roseus* cv. Nirmal, which bears pure white flowers (Kulkarni *et al* 1992). About 20,000 seeds were irradiated with 10 to 45 krad  $\gamma$ -rays, in batches of about 1000 seeds, using a Cobalt 60 source that emitted  $\gamma$ -rays of 200 rads/min in a gamma cell 200. The Cobalt 60 source was provided by the Bhaba Atomic Research Center, Mumbai, India. The treated seeds were sown over farm yard manure : soil :: 2 : 1 mixture in earthen pans. About one month old M<sub>1</sub> seedlings were transplanted in the field. The M<sub>2</sub> seeds were harvested from each individual plant.

### 2.2 Isolation of mutants

The M<sub>2</sub> and control seeds were sterilized separately with 0.1% HgCl<sub>2</sub> for 1 min, washed thoroughly with distilled water and blotted dry. The seeds were separately sown over sterile double layer of Whatman No. 1 filter paper circles moistened with milli-Q-water kept in petridishes which were incubated at 45°C. No wild type seed, of about 20,500 tested, was found to germinate under these conditions. By screening a total of 35,200 seeds raised from about 700 M<sub>1</sub> plants, a few temperature tolerant seedlings were recovered; one of the selected seedling was transferred to soil in a pot and grown in the glass-house. After about a month the pot was transferred to a greenhouse, and upon maturity of the plant M<sub>3</sub> seeds were harvested. The temperature tolerance phenotype of M<sub>3</sub> progeny seedlings was tested as described above and the seedlings were transplanted in the field to multiply the seeds. M<sub>2</sub> generation onwards the flowers were manually self-pollinated to obtain pure seeds of this line. In the initial stages of the work itself the Abo<sup>-</sup> plants had been found to possess pleiotropic phenotype comprising of three cotyledons, dwarf habit, fistulate leaves and heat tolerance.

### 2.3 Screening of seeds, seedlings and plants under ambient and stressed conditions

(a) The effect of light, salinity and temperature on seedlings in Abo<sup>-</sup> and Abo<sup>+</sup> stocks was studied using 100 seeds, in triplicate. Seeds were sown on moistened filter paper in a Petridish, and irrigated with deionized water or 200 mM NaCl. The incubation temperatures were 25° and 45°C. The plates were covered with black paper for incubation of seeds in dark. The plates incubated in light received florescent light of 3000 lux for 16 h/day. Germination was scored after 2 weeks of incubation. The Abo<sup>-</sup> and

*Abo*<sup>+</sup> stocks were sown separately on moistened filter paper in Petridishes, using deionized water (0.1 dSm<sup>-1</sup>) for irrigation and incubating the Petriplates at 25°C. Five days old seedlings were treated variously: (i) some were retained under these very conditions; (ii) some were transferred to 35°C and some to 45°C, and irrigated with deionized water; (iii) some were transferred to new Petridishes for which the irrigation medium was 200 mM NaCl and incubation temperature 25°C.

(b) To compare the adult plants of the mutant and wild type, the *Abo*<sup>+</sup> and *Abo*<sup>-</sup> seedlings were raised in Petridishes as described above. The 15 day seedlings were transferred to vermiculite in pots and grown in the glasshouse. The plants were next transferred to a greenhouse. After 2 months plants were given the varying temperature and salinity treatments for 7 days as described above for seedlings. Several plants of each genotype were retained in the greenhouse to characterize them at the age of 8 months.

(c) To compare the *Abo*<sup>-</sup> and *Abo*<sup>+</sup> plants for their drought tolerance, plants grown in green house for about 8 months in pots on soil were used. The well watered soil surface (80% soil moisture) and the pot of each plant was covered with polythene to avoid evaporation of soil water. The plants were kept in the described conditions as above in triplicate. The soil moisture and proline contents of leaves were assayed monthly till *Abo*<sup>-</sup> and/or *Abo*<sup>+</sup> had wilted/dried up.

#### 2.4 Estimation of endogenous proline, betaine, alkaloid and ABA

The proline estimations were carried out in triplicate on 2 week old entire seedlings and leaves of two month old plants. For each sample, approximately 0.5 g of fresh tissue was ground in 3% sulphosalicylic acid and the extract was assayed for proline concentration by the method described by Bates *et al* (1973). For betaine estimations the tissue was dried in oven at 75°C, ground in a blender and assayed for betaine by the periodide assay (Grieve and Grattan 1983). For alkaloid analysis leaves sampled from eight month old plant were dried in shade and extracted for alkaloids by following the method already standardized (Anonymous 1966).

The ABA estimations were made on freshly harvested leaves. About 30 g samples of leaves were collected from mature plants grown in green house or field. Each leaf sample was extracted with absolute methanol overnight at 4°C. After filtration, methanol was evaporated in vacuum at 40°C and the aqueous phase was frozen, thawed and centrifuged at 15000 g at 2°C for 20 min. Supernatant was further purified by the procedure of Knecht and Bruinsma (1973) as modified by Kamisaka and Larsen (1977).

Evaporation of the acidic ether phase in vacuum at 35°C furnished a residue which was dissolved in methanol and chromatographed on preparative thin-layer chromatography (TLC) (20 × 20 cm, 0.4 mm thick silica gel G) with benzene : ethyl acetate : acetic acid :: 70 : 30 : 10 as the solvent system. The authentic (±)-cis, *trans*-ABA (Sigma) was spotted on the plate as a marker. The TLC plates were dried and visualized by exposure to iodine vapours and UV. Silica gel corresponding to marker, was scrapped, suspended in methanol and concentrated. The residue was dissolved methanol and analysed using high performance liquid chromatography (HPLC) (Shimadzu-LC8A HPLC) equipped with photodiode array detector. The chromatography was done with MeOH : H<sub>2</sub>O :: 1 : 1 as solvent [flow rate = 0.7 ml/min, column = Lichro CART (124–4 mm) PP-18 HPLC column (5 ~ m)]. The quantitation was done considering specific area of the peak knowing the retention time of a standard ABA at 254 nm.

#### 2.5 Microscopic studies

The seeds were germinated on water soaked filter paper in Petridishes at 25°C in the dark and transferred to light after 3 days. Hypocotyls of the 2 weeks old seedlings were hand sectioned. The juvenile leaves and stems of 2 month-old plants were also sectioned. The fresh sections were mounted in glycerin and examined using a Nikon optiphot-Pol inverted light microscope. The stomatal morphology was studied using leaf epidermal peels. Each experiment was successfully repeated thrice and about 100 stomates were scored each time.

#### 2.6 Genetic analysis

To study the inheritance of the phenotypes of *Abo*<sup>-</sup> genotype, the mutant was crossed with parental *Abo*<sup>+</sup> wild type, reciprocally. The buds were hand emasculated in the morning and pollinated in the evening. The flowers borne on the F<sub>1</sub> plants were self pollinated to produce F<sub>2</sub> seeds. The parent, F<sub>1</sub> and F<sub>2</sub> plant phenotypes were compared.

### 3. Results

#### 3.1 Isolation of temperature tolerant mutant(s)

Plants are known to acquire thermotolerance by prior exposure to elevated temperature (Burke *et al* 2000). It has also been demonstrated that constitutive expression of a heat shock transcription factor increases the level of thermotolerance in *Arabidopsis thaliana* without prior exposure to higher temperature (Prandl *et al* 1998). We wanted to isolate mutants in periwinkle *C. roseus* in which thermotolerance would be expressed without the need for pre-exposure to non lethal temperature. In this regard it

had been shown in the preliminary experiments that the periwinkle *C. roseus* cv Nirmal seeds did not germinate when incubated over moistened filter paper at 45°C. Accordingly it was thought that the seeds of thermo-tolerant mutants of periwinkle would germinate in the above test at 45°C. To recover temperature tolerant mutants, a mutation experiment was conducted in *C. roseus* cv. Nirmal. About 20,000 seeds were irradiated with varying doses of  $\gamma$ -rays (10–45 kr). The irradiated seeds gave rise to 700 M<sub>1</sub> plants when sown in the field. The seeds harvested from 10 M<sub>1</sub> plants each were pooled together for ease in screening. The germination test at the high temperature was conducted altogether on about 35,200 M<sub>2</sub> seeds. Among a batch of seeds from ten plants, 4 seeds germinated and produced seedlings on moistened filter paper in Petridish incubated at 45°C. These seedlings were assumed to be progeny of an M<sub>1</sub> plant and therefore one seedling was grown to maturity and seeds were collected, following selfing. The ability of M<sub>3</sub> seeds to germinate at 45°C, confirmed the temperature tolerant phenotype. The mutant has since been maintained as a pure stock for six generations. The seedlings and adult plants of the mutant, since given the designation Abo<sup>-</sup> (ABA overproduction), were observed in the early M<sub>2</sub> generation to be morphologically distinct from the Abo<sup>+</sup> wild type plants.

### 3.2 Morphological features of Abo<sup>-</sup> mutant

The M<sub>3</sub> seeds were used to raise many temperature tolerant seedlings which were then taken to maturity and observed throughout their life cycle. The phenotype of the temperature tolerant mutant was dramatically different from that of the wild type, at all stages of development (figure 1). The wild type seedlings typically have two cotyledons while the temperature tolerant mutant seedlings exhibited three distinct cotyledons. The mutant and wild type differed morphologically as well as anatomically (table 1). In comparison to the obovate, elliptic and smooth leaves of the wild type, those of the mutant plant were linear, thicker and curved and small sized, bearing a fistulated shape. The mutant plants were dwarf and had a bushy canopy due to profuse branching at the base. Mutants plants had five-fold fewer flowers than the wild type. The flowers, fruits and seeds were also smaller in the mutant than the wild type. There was high degree of pollen sterility in the mutant. Seed setting per fruit was several fold lower than the wild type.

It will be seen from the observations summarized in the table 2 that the dwarf nature of Abo<sup>-</sup> plants was related to reduced development of sclerenchyma and vascular tissues and reduction in the size of cells in all the tissues as compared to the wild type (figure 2). The laticiferous system was also poorly developed in the mutant shoot. The

frequency of trichomes on the abaxial and adaxial surfaces of leaves was higher in the mutant. The leaves in the mutant had additional layers of mesophyll cells (figure 3). On the adaxial surface about 50% of stomata were closed and/or semi-closed in Abo<sup>-</sup> plants, whereas only 15% stomata were closed or semi-closed in Abo<sup>+</sup> plants. The reduced transpiration in the Abo<sup>-</sup> plants reflected their xerophytic character.

### 3.3 Multi-abiotic stress tolerant behaviour of Abo<sup>-</sup> mutant

The temperature tolerant mutant abo<sup>-</sup> shared properties which are typical of drought-tolerant plants. Therefore,

**Table 1.** Morphological characters of Abo<sup>-</sup> mutant and Abo<sup>+</sup> wild type plants of periwinkle *C. roseus*.

Characters <sup>a</sup>	Wild type Abo <sup>+</sup>	Mutant plant Abo <sup>-</sup>
Total plant biomass (g/plant)	69.0 ± 6.3	16.0 ± 1.5
Plant height (cm)	63.4 ± 2.2	9.7 ± 0.4
Main stem diameter (mm) <sup>b</sup>	12.0 ± 0.8	11.1 ± 0.3
Internodal length (cm)	2.1 ± 0.1	0.2 ± 0.1
Number of branches/plant <sup>c</sup>	26.7 ± 3.5	5.0 ± 1.2
Length of petiole (cm)	0.7 ± 0.3	1.4 ± 0.1
Number of leaves/plant	496 ± 31	308 ± 22
Leaf length (cm)	4.7 ± 0.3	2.4 ± 0.1
Leaf width (cm)	2.3 ± 0.2	0.7 ± 0.1
Leaf area (cm <sup>2</sup> ) <sup>d</sup>	8.9 ± 1.5	1.3 ± 0.1
Leaf biomass (g/plant)	43.0 ± 4.2	12.0 ± 1.3
% alkaloid in leaves	1.3 ± 1.0	1.9 ± 1.0
Number of flowers/branch	121 ± 4.0	20 ± 1.0
Length of corolla tube (cm) <sup>e</sup>	2.9 ± 0.1	2.2 ± 0.1
Length of petal (cm)	2.3 ± 0.2	1.0 ± 0.1
Width of petal (cm)	1.8 ± 0.1	0.4 ± 0.1
Length of sepal (cm)	0.4 ± 0.3	0.4 ± 0.1
Pollen fertility (%) <sup>f</sup>	87 ± 4.0	12 ± 2.0
Pollen germination (%) <sup>g</sup>	45.7 ± 2.3	3.3 ± 0.9
Length of style (cm)	1.9 ± 0.1	1.5 ± 0.1
Length of pods (cm)	2.8 ± 0.1	0.7 ± 0.1
Average number of seeds/silique	16 ± 0.6	1.0 ± 0.3
Seed length (mm)	2.2 ± 1.7	2.4 ± 0.1
Seed width (mm)	1.1 ± 0.1	0.9 ± 0.1
100 seeds weight (mg)	81 ± 2.0	41 ± 1.0

<sup>a</sup>All the quantitative observations were taken in triplicate in 8 months old green house grown plants and seeds produced on them.

<sup>b</sup>Main stem diameter was measured in the middle of land surface and site of emergence of first branch from stem.

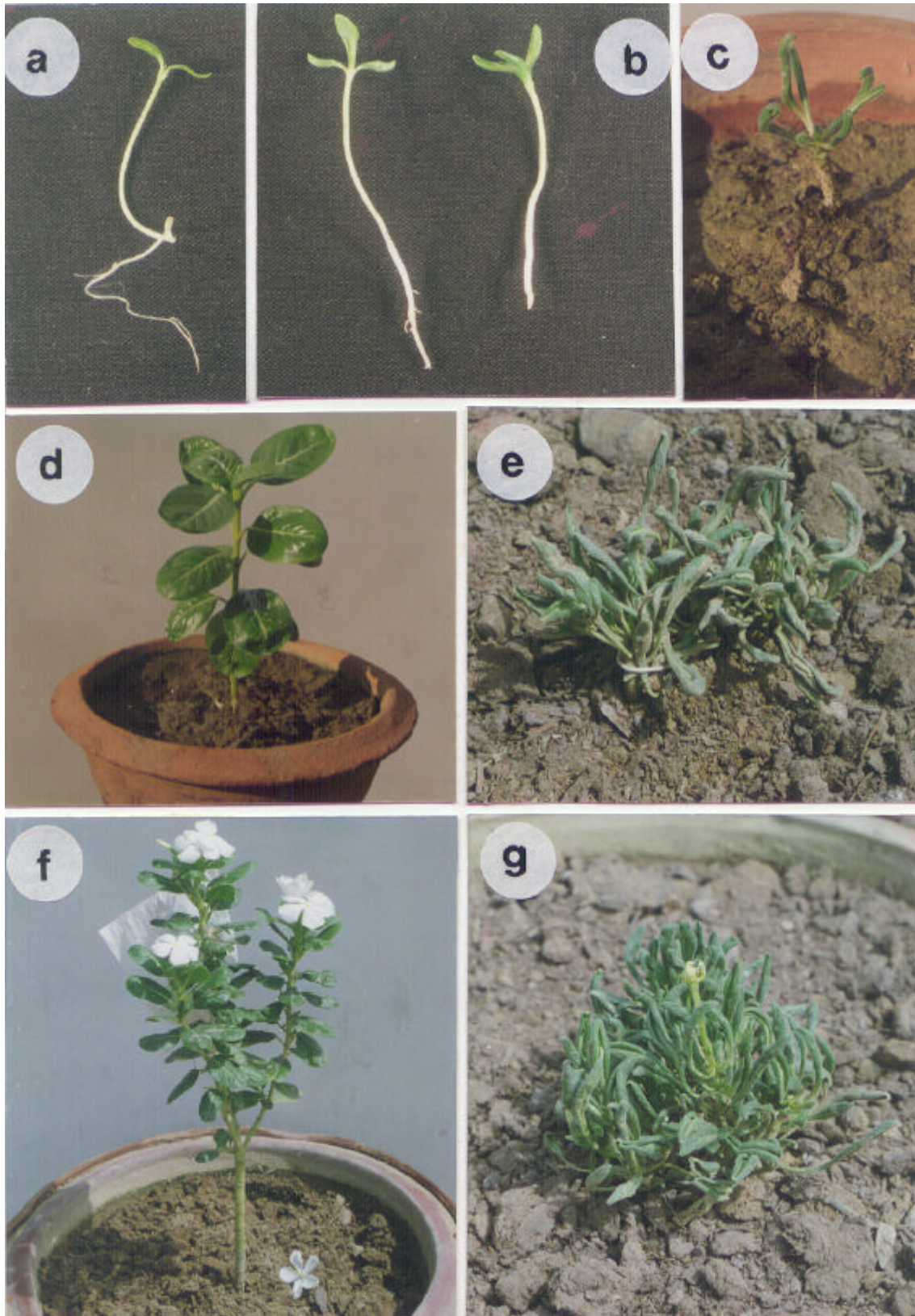
<sup>c</sup>Total number of branches were counted.

<sup>d</sup>Leaf area was measured by using leaf area meter.

<sup>e</sup>Floral morphology was studied by examination of flowers under dissecting microscope.

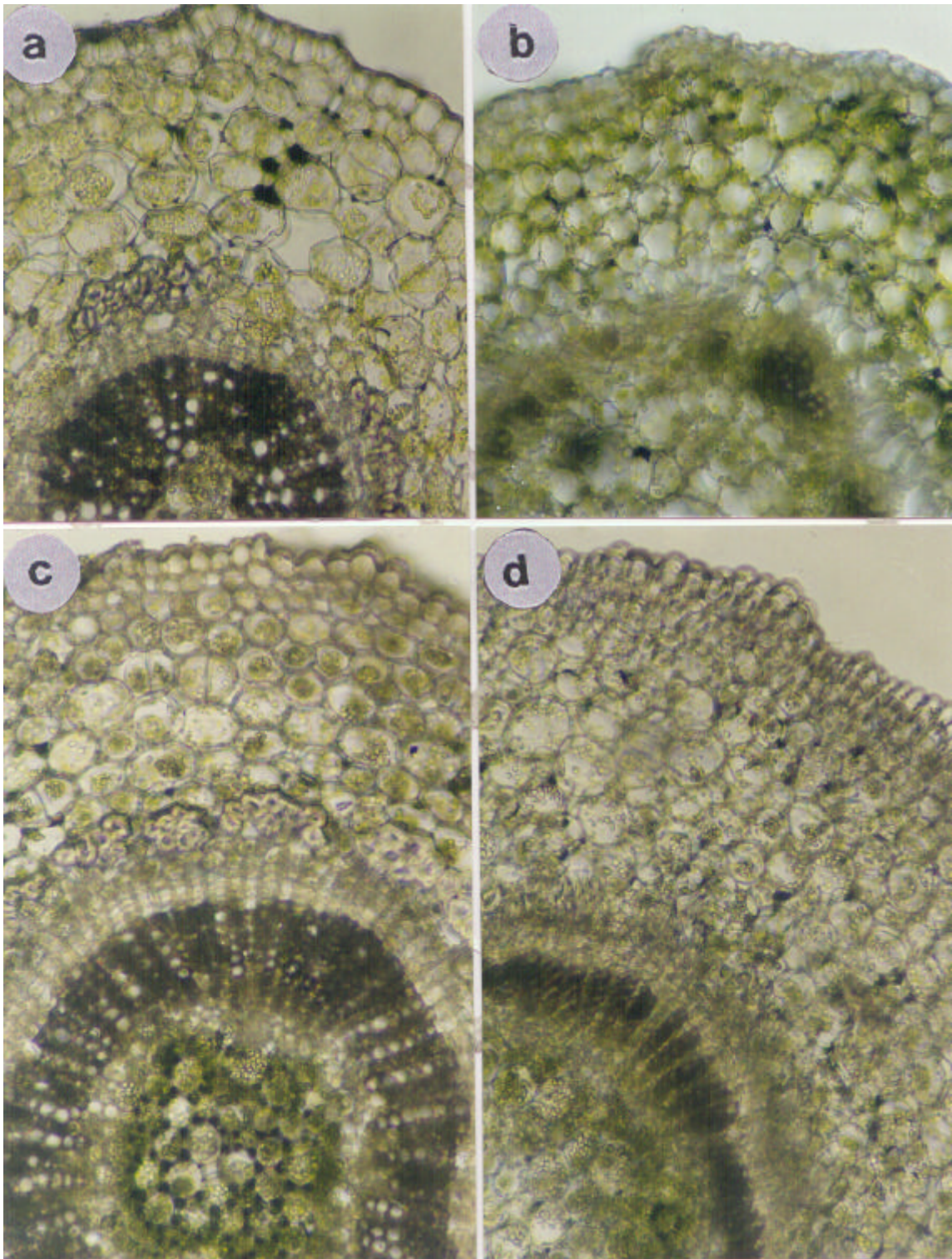
<sup>f</sup>Pollen fertility was assessed using acetocarmine and fluorochromatic reaction tests (Heslop-Harrison and Heslop-Harrison 1970).

<sup>g</sup>Pollen germination was assessed in Brewbaker medium (Brewbaker and Kwack 1963).



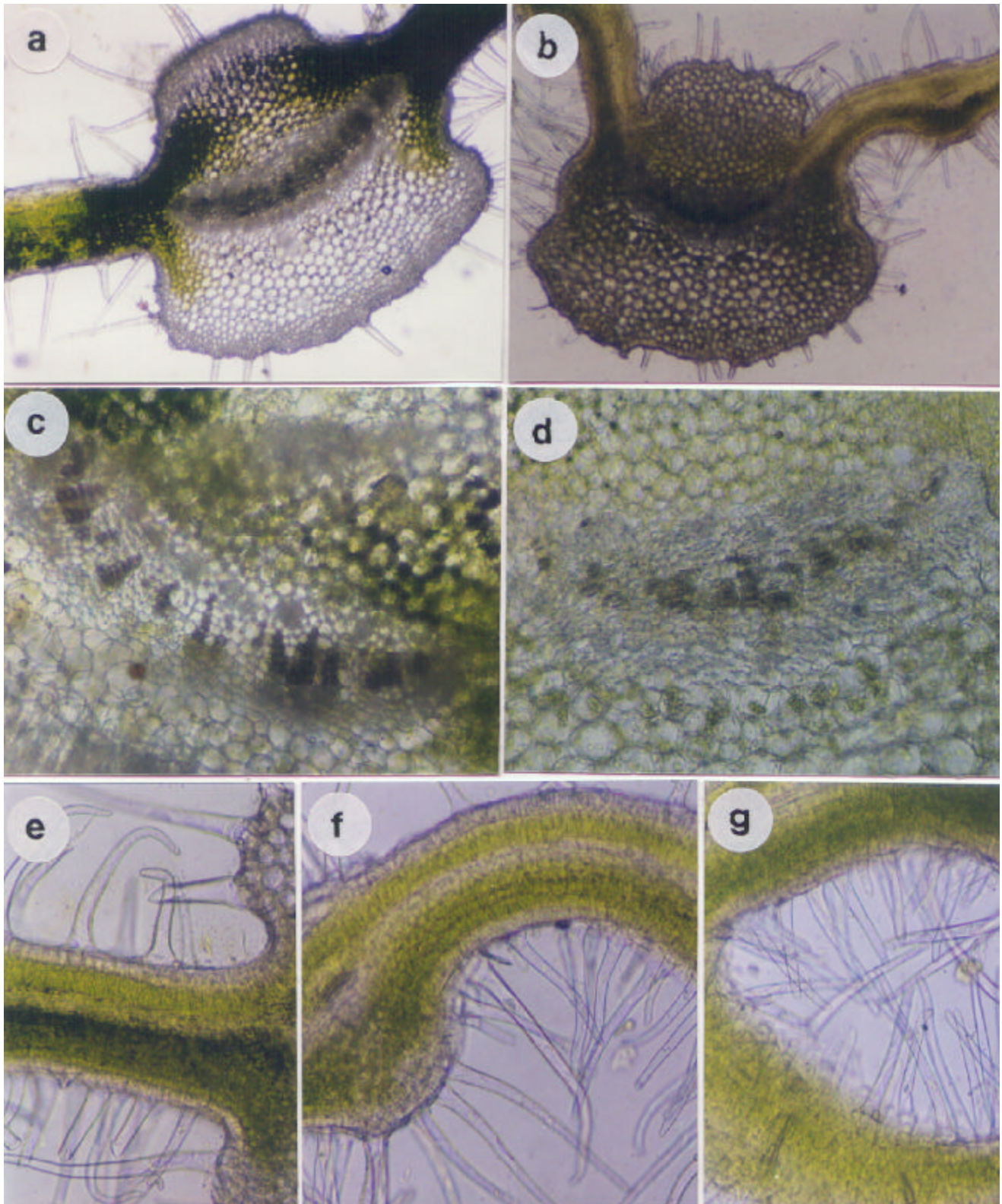
**Figure 1.** Morphology of the wild type and mutant  $Abo^-$  plants of *C. roseus*. (a)  $Abo^+$  two cotyledons bearing two weeks old seedling. (b) Two week old  $Abo^-$  seedlings bearing three cotyledons. (c) One month old  $Abo^-$  bearing-plant. (d) Two months old  $Abo^+$  plant. (e) Two months old  $Abo^-$  plant. (f), (g) Three months old adult reproductive  $Abo^+$  and  $Abo^-$  plants.





**Figure 2.** Anatomical features of  $Abo^+$  and  $Abo^-$  seedlings and adult plants. Transverse section of hypocotyl of (a)  $Abo^+$  seedling and (b)  $Abo^-$  seedling; transverse section of two month old plants of (c)  $Abo^+$  and (d)  $Abo^-$ .





**Figure 3.** Anatomical features of *Abo*<sup>+</sup> and *Abo*<sup>-</sup> leaves from on two months old plants. (a) Transverse section of *Abo*<sup>+</sup> leaf. (b) Transverse section of *Abo*<sup>-</sup> leaf; corresponding sections at 10 × magnification from midrib region showing vascular tissues. (c) *Abo*<sup>+</sup> and (d) *Abo*<sup>-</sup>; leaf lamina at 10 × magnification showing tricomatous epidermis, palisade and spongy tissues in (e) *Abo*<sup>+</sup>, (f) *Abo*<sup>-</sup> and (g) curved lamina of *Abo*<sup>-</sup> leaf.

the mutant was screened for tolerance against high NaCl and water stress (table 3). The wild type seeds germinate at temperatures up to 39°C and in the presence of 150 mM NaCl but failed to do so at 45°C and 200 mM NaCl. The Abo<sup>-</sup> mutant seeds tolerated 45°C and 200 mM NaCl salinity and all of them germinated producing healthy seedlings. When two months old plants of the mutant and wild type were exposed to the above high temperature and high salinity stresses for a period of 1–2 weeks, both types survived for one week. However, later whereas the wild type plants had died, while the mutant plants continued to survive. To find out whether Abo<sup>-</sup> and Abo<sup>+</sup> plants differentially accumulated the compatible osmolytes, their proline and betaine contents were compared. Seedlings and leaves of 2 weeks old plants of Abo<sup>-</sup> mutant had 50–80% higher level of endogenous proline as compared to the wild type plants. The proline content in the seedlings and the leaves of high temperature stressed Abo<sup>-</sup> plants was about 2-fold higher than that in the wild type. Both types of seedlings accumulated similarly high levels of proline. The leaves of Abo<sup>-</sup> mutant plants treated with salinity stress showed about 50% more proline content than comparably stressed leaves of the wild type plants. The glycine-betaine content was 25% more in the mutant seedlings germinated in saline water (150 or 200 mM) than the wild type seedlings (figure 4).

Comparison of the adult mutant and wild type plants for their response to irrigation withdrawal showed that wild

type lost soil water through transpiration much more rapidly than the mutant plants (table 3); withholding of irrigation for 3 months in potted plants led to the death of wild type, while the mutant type survived. By about two months of drought stress, the leaves of mutant plants had accumulated about 33% more proline than those of the wild type.

The observations described above demonstrated that the mutant plants had the ability to accumulate proline both constitutively and by induction, the latter being more pronounced under the high temperature stress. The wild type plants also accumulated proline under stress albeit at a lower level than the mutant plants.

### 3.4 Overproduction of ABA in Abo<sup>-</sup>

The results discussed above indicate that the Abo<sup>-</sup> mutant plants accumulated higher levels of proline and glycine-betaine in shoot as compared to wild type plants both in the presence and absence of temperature, salinity and drought stresses. It is known that imposition of salinity, drought or cold stresses combined with the application of ABA on the other hand lead to accumulation of compatible solutes such as proline and betaine. Further, the concentration of endogenous ABA rises in plants that have been imposed with these above stresses. Thus Abo<sup>-</sup> mutant plants could be over producer of ABA. The results

**Table 2.** Anatomical characteristics of Abo<sup>-</sup> mutant and Abo<sup>+</sup> wild type plants of periwinkle *C. roseus*.

Organ	Organ/tissue characteristic	Abo <sup>-</sup> mutant	Abo <sup>+</sup> wild type
Stem	Epidermis	Cell round of small size (20 µm × 18 µm)	Cells elongated of large size (25 µm × 15 µm)
	Cortex	Small cells (176 µm <sup>2</sup> ), compactly arranged	Large cells (314 µm <sup>2</sup> ), loosely arranged
	Scelerenchyma	Absent or reduced around the vascular bundles	Fully developed around the vascular bundles
	Phloem	Less developed	Well developed forming a ring around the xylem
	Xylem	Xylem cells occur scattered	Xylem cells are arranged in the shape of a ring
	Pith	Well developed and large	Less developed
	Laticifers, idioblast tissue	Infrequent	Frequent
Leaf	Epidermal layer	Cells small (18 µm × 15 µm), large trichomes (143 on abaxial and 256 on adaxial surface), frequency of trichomes high (12 on abaxial surface and 25 on adaxial surface); 18% stomata on adaxial surface semiclosed and 40% closed	Cells large (22 µm × 19 µm), small trichomes (110 on abaxial surface and 167 adaxial surface), less frequent (4 on abaxial and 18 on adaxial surface); 15% stomata on adaxial surface semiclosed, nil closed
	Hypodermal Sclerenchyma	Absent or poorly developed below the epidermis	Well developed
	Xylem and phloem	Poorly developed	Well developed
	Laticifers and idioblast tissue	Infrequent	Frequent



shows that the leaves of the adult plants of *Abo*<sup>-</sup> contained more than 500-fold ABA per unit biomass than the wild type (table 4).

### 3.5 Inheritance of *Abo*<sup>-</sup> pleiotropic phenotype

The *Abo*<sup>-</sup> mutant differed from the wild type in its being relatively more tolerant to high temperature, salinity and

drought and also accumulated more proline and glycine-betaine in its leaves. The morphological differences between *Abo*<sup>-</sup> and *Abo*<sup>+</sup> plants included the presence of three cotyledon, thicker and hypertrichomated leaf lamina and poorly developed vascular and sclerenchymatous tissues in the mutant as compared to the wild type. The wild type (2 cotyledons, normal leaf, sensitivity to 45°C and 200 mM NaCl solution) phenotype of the F<sub>1</sub> plants from reciprocal crosses between *abo*<sup>-</sup> *abo*<sup>-</sup> (*Abo*<sup>-</sup>) mutant

**Table 3.** Seed germination, seedling and plant growth and proline content characteristics of the stress tolerant *Abo*<sup>-</sup> and wild type genotype in periwinkle *C. roseus*.

Parameter	Conditions of growth	Genotype (phenotype)	
		<i>abo</i> <i>abo</i> ( <i>Abo</i> <sup>-</sup> )	Wild type ( <i>Abo</i> <sup>+</sup> )
Hypocotyl length (cm)	Distilled water <sup>a</sup>	1.6 ± 0.1	2.1 ± 0.06
	Saline water <sup>b</sup>	1.2 ± 0.1	ND <sup>j</sup>
	35°C temperature	2.2 ± 1.1	2.1 ± 1.0
	45°C temperature	1.1 ± 0.2	ND <sup>i</sup>
Proline content in two weeks old seedlings (µmol/gFw) <sup>c</sup>	Distilled water <sup>a</sup>	1.8 ± 0.1	1.1 ± 0.0
	Saline water <sup>b</sup>	2.6 ± 0.1	2.4 ± 0.0
	35°C temperature	2.8 ± 0.1	1.6 ± 0.6
	45°C temperature	5.3 ± 0.4	2.7 ± 0.5
Shoot length (cm) <sup>d</sup>	Distilled water <sup>e</sup>	3.2 ± 0.4	10.0 ± 0.7
	Saline water <sup>f</sup>	2.1 ± 0.1	6.7 ± 0.2
	35°C temperature	3.6 ± 0.2	11.1 ± 0.2
	45°C temperature	1.7 ± 0.2	4.4 ± 0.4
Proline content in two months old plants (µmol/gFw) <sup>d</sup>	Distilled water <sup>e</sup>	3.8 ± 0.1	2.6 ± 0.1
	Saline water <sup>f</sup>	4.8 ± 0.2	3.1 ± 0.1
	35°C temperature	3.7 ± 0.1	2.6 ± 0.1
	45°C temperature	7.0 ± 0.1	3.4 ± 0.4
Soil water taken up during further growth by adult plants initially irrigated with measured amount of water (%) <sup>g</sup>	After one month from irrigation	8.9 ± 2.4	31.3 ± 4.1
	After two months from irrigation	34.2 ± 6.9	73.0 ± 4.2
	After three months from irrigation	68.3 ± 3.4 (plants were alive)	80.0 ± 4.2 (plants had dried)
Proline content in above treated plants (µmol/gFw) <sup>h</sup>	At one month	35.1 ± 0.4	21.6 ± 3.1
	At two months	40.4 ± 1.5	35.2 ± 1.0
	At three months	42.7 ± 1.2	ND <sup>j</sup>

<sup>a</sup>Filter paper was soaked in distilled water and the incubation temperature was 25°C.

<sup>b</sup>Filter paper was soaked with 200 mM NaCl solution and the incubation temperature was 25°C.

<sup>c</sup>Measured in two weeks old seedlings grown in Petridish(es) over moistened filter paper, Fw, fresh weight.

<sup>d</sup>Measured on 2 months old plants grown in soil.

<sup>e</sup>Plants were grown at 25°C and irrigated with distilled water.

<sup>f</sup>Plants were grown at 25°C and irrigated with 200 mM NaCl solution.

<sup>g,h</sup>Green house grown 8 months old plants in pots were irrigated such that soil water value was 80%, subsequently the pots and soil surfaces were covered with polythene sheet.

<sup>i</sup>Could not be determined as the seedlings/plants had wilted and dried.

<sup>j</sup>ND, not detected.

plants with  $abo^+ abo^+$  ( $Abo^+$ ) parental wild type plants showed that mutation(s) carried in the  $Abo^-$  plants was recessive. The  $Abo^-$  plants recovered in the  $F_2$  generation had 3 cotyledons, fistulate leaves and were tolerant to abiotic stresses. Anatomical studies on some of the  $Abo^-$   $F_2$  plants showed that they had hypertrichomatous epidermis, defective vascular and sclerenchymatous tissues like the  $Abo^-$  parent. The  $F_2$   $Abo^-$  plants showed elevated ABA levels and exhibited anatomy similar to the  $Abo^-$  parent. The proportion of the  $Abo^-$  and wild type plants in the  $F_2$  population shows that the  $Abo^-$  phenotype was due to a single gene inherited in Mendelian fashion.

To test whether  $Abo^-$  and  $Abo^+$  plants recovered in  $F_2$  generation also accumulated proline like the respective parents, the  $F_2$  population was raised at 35° and 45°C and two months old plants were examined for their morphology and the proline content (figure 5). It will be seen from the results summarized in the figure 6 that the  $F_2$  tricotyledonous 2 months old plants had proline contents similar to the plants of  $Abo^-$  parent and dicotyledonous wild type  $F_2$  plants had proline content similar to the plants of wild type (table 5). The above results demonstrated that the entire pleiotropic phenotype identified here for  $Abo^-$  mutant was inherited together as a recessive

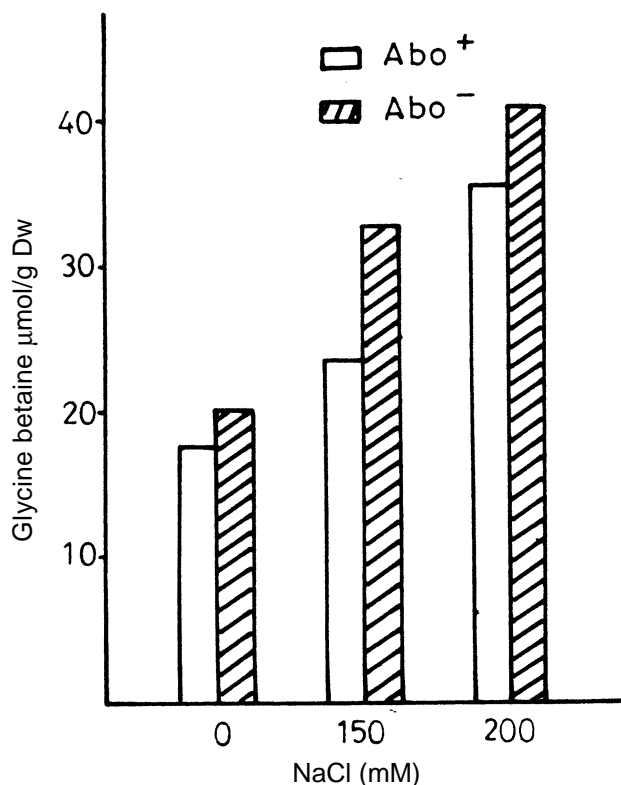
allele of a Mendelian locus (gene) in crosses with the wild type.

#### 4. Discussion

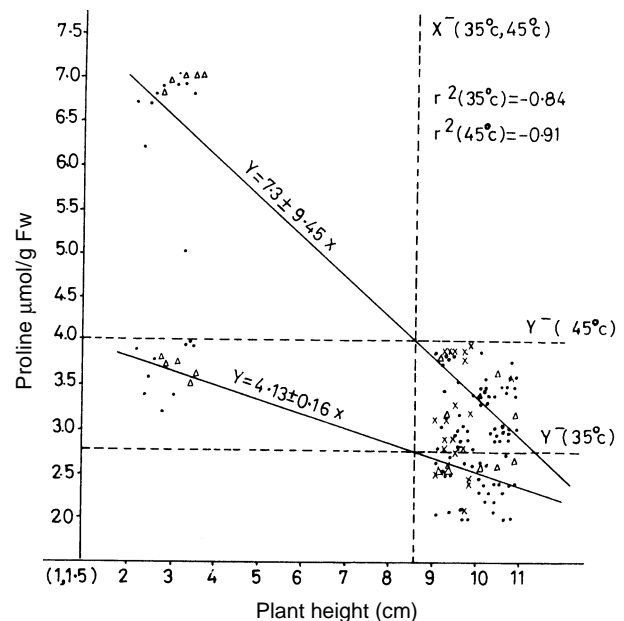
The experimental results presented here show that the  $Abo^-$  mutant of periwinkle (*C. roseus*) has a unique pleiotropic phenotype that is inherited together recessively in Mendelian fashion. The results permit the inference that due to mutational knocking out of a function, the *abo abo* mutant plants overproduce ABA. As a result the seeds formed have tricotyledonous embryos, adult plants are dwarf, bear lanceolate and hypertrichomated leaves on stem which has poorly developed vascular bundles; many

**Table 4.** ABA content in  $Abo^-$  and  $Abo^+$  plants of periwinkle *C. roseus*.

Parameter	Genotype	
	$Abo^+$ (wild type)	$Abo^-$ (mutant)
ABA content ( $\mu\text{g/gFw}$ )	$0.009 \pm 0.004$	$5.4 \pm 1.9$



**Figure 4.** Concentrations of glycine-betaine in the leaves of  $Abo^-$  and  $Abo^+$  plants.



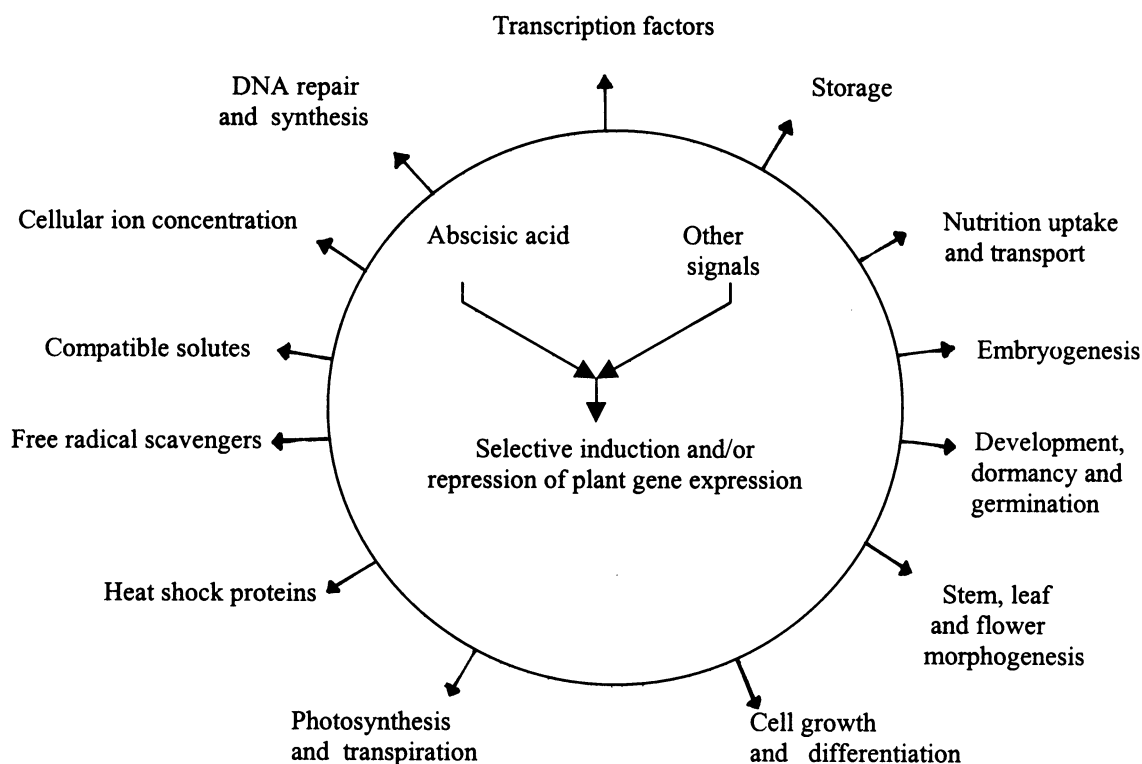
**Figure 5.** Relationship between plant height and leaf proline content in the  $Abo^-$  and  $Abo^+$  plants grown at 35° and 45°C. The observations taken on the *abo abo*  $Abo^-$  and  $Abo^+ abo^+ abo^+$  or  $abo^+ abo^-$  plants have been plotted and regression equations estimated at the 2 temperatures of incubations; 35°C,  $Y = 4.13 - 0.16X$ ; and 45°C,  $Y = 7.9 - 0.45X$ .

of the stomata on the leaves are constitutively closed. The mutant seedlings and plants are tolerant to 45°C temperature, 200 mM NaCl and prolonged withdrawal of irrigation water. Under abiotic stress conditions they accumulate higher levels of proline and betaine. The phenotype of the mutant appears to provide some direct evidence in favour of the involvement of ABA in the determination of abiotic stress tolerance and control of morphogenetic development of plant shoot in terms of structural organization and functioning of stem, leaves, flowers, fruits and seeds. Some aspects of the above inferences are discussed below.

There have been a few reports of ABA-overproducing plant mutants. The *pew-1* mutant of *N. plumbaginifolia* which is defective in the synthesis of phytochrome chromophore had been observed to accumulate about 1.4 times more ABA in leaves than its wild type parent (Kraepiel *et al* 1994). In the present work, the ABA content in the leaves of *Abo*<sup>-</sup> plants of *C. roseus* was observed to be very high, over 500-fold of that in *Abo*<sup>+</sup> plants. The ABA content in a plant tissue basically represents the sum total of ABA which is synthesised and lost due to photolability or converted into metabolites such as phaseic acid and ABA glucose ester. The available evidence shows that ABA is synthesised from C<sub>40</sub> xanthophyll precursors in many steps which occur in plastids and cytosol of plant

cells in tissue specific manner (Tan *et al* 1997). The synthesis and degradation of ABA have been reported to be regulated developmentally and by abiotic stress (Lietenberg *et al* 1999). The observations are consistent with the notion that the *abo*<sup>-</sup> gene of *C. roseus* is responsible for a protein product whose presence is required for the synthesis of ABA in normal amounts. In the absence of *Abo* protein, the negative control of ABA synthesis does not seem to operate and consequently ABA seems to be over-produced. In the *pew-1* mutant of *N. plumbaginifolia* the high level of ABA is due to a higher level of ABA-degradation and not due to an enhancement of ABA biosynthesis (Kraepiel *et al* 1994). It is suggested that the loss of negative control over ABA synthesis must be largely responsible for the over production of ABA in *Abo*<sup>-</sup> mutant.

In the *abo abo* plants of *C. roseus*, the leaves, besides being richer in ABA, had curvaceous fistulate shape, hyper-trichomated surfaces and about 7-fold reduced size as compared to the obovate shaped relatively smooth leaves of *Abo*<sup>+</sup> plants. The sizes of cells of various tissues in stem and leaves were smaller and xylem poorly developed in *Abo*<sup>-</sup> plants as compared to *Abo*<sup>+</sup> plants. The small leaf phenotype of ABA rich *abo abo C. roseus* mutant is in agreement with earlier studies which showed that ABA inhibits leaf area in plants (Creelman *et al*



**Figure 6.** Roles of abscisic acid deduced from the phenotype of *Abo*<sup>-</sup> (ABA over producer) mutant identified in *C. roseus*.



**Table 5.** Co-inheritance of seedling and adult plant morphological, multi abiotic stress tolerance and high ABA content characters in Abo<sup>-</sup> *abo* plants and in the reciprocal crosses between *abo* *abo* and wild type Abo<sup>+</sup> plants of periwinkle *C. roseus*.

Parents and crosses <sup>a</sup>	Number of tricotyledonous fistulate leaf bearing seedlings that were				Number of wild type seedlings that were				X <sup>2(b)</sup> test for	
	resistant to 200 mM NaCl	sensitive to 200 mM NaCl	resistant to 45°C	sensitive to 45°C	resistant to 200 mM NaCl	sensitive to 200 mM NaCl	resistant to 45°C	sensitive to 45°C	response to NaCl	response to 45°C
Abo <sup>-</sup>	36	0	36	0	–	–	–	–		
Wild type	–	–	–	–	0	72	0	72		
Abo <sup>-</sup> x wild type (F <sub>1</sub> )	0	0	0	0	0	20 <sup>c</sup>	0	09 <sup>c</sup>		
Abo <sup>-</sup> x wild type (F <sub>2</sub> )	17 <sup>d,h</sup>	0	15 <sup>e,h</sup>	0	0	49 <sup>d,h</sup>	0	48 <sup>e,h</sup>	0.02	0.05
Wild type x Abo <sup>-</sup> (F <sub>1</sub> )	0	0	0	0	0	18 <sup>c</sup>	0	12 <sup>c</sup>		
Wild type x Abo <sup>-</sup> (F <sub>2</sub> )	11 <sup>f,h</sup>	0	22 <sup>g,h</sup>	0	0	39 <sup>f,h</sup>	0	65 <sup>g,h</sup>	0.24	0.004

<sup>a</sup>The parents were homozygous Abo<sup>-</sup> *abo* *abo* (mutant) and Abo<sup>+</sup> *abo*<sup>+</sup> *abo*<sup>+</sup> (wild type).

<sup>b</sup>X<sup>2</sup> calculated on an expected ratio of 3 sensitive to 1 resistant; X<sup>2</sup> P > 0.05.

<sup>c</sup>Separate seed samples from the same lot were screened for the two characters.

<sup>d,e</sup>Separate randomly formed seed samples from the bulk seeds produced on the same F<sub>1</sub> plant were screened for the two characters.

<sup>f,g</sup>Like d and e.

<sup>h</sup>Some randomly picked plants from among these upon checking for proline, betaine and ABA contents in leaves were found to be like the original *abo* mutant parental plants in their expression.

1990; Lecocur *et al* 1995). Similar effect has also been well documented in large sized leaf bearing cassava (*Mainhot esculenta*) plant. These results suggest that ABA at high concentrations has repressive effects on the genes related to cell division and cell expansion processes. It is already known that ABA adversely affects the expression of certain plant protein kinases involved in cell division process (Wang *et al* 1998; Covic *et al* 1999). The properties of *abo* *abo* mutant provide the genetic evidence on the role of ABA in leaf and stem growth, development and morphogenesis in plants.

The *abo* *abo* (Abo<sup>-</sup>) mutant described in this work was isolated on the basis of its thermotolerant phenotype. Among the M<sub>2</sub> generation seeds, its seeds was the only one to germinate and form seedling at 45°C. While Abo<sup>+</sup> and Abo<sup>-</sup> seeds of *C. roseus* germinate at 35°C and lower temperatures, seeds of only the Abo<sup>-</sup> mutant form seedlings at 45°C. It is possible that the constitutive thermotolerance property of Abo<sup>-</sup> could be related to the ABA over-expression. Induction of high levels of heat shock proteins (Hsps) is believed to confer adaptation to high temperatures in plants (Burke *et al* 2000; Queitsch *et al* 2000). The phenotype of Abo<sup>-</sup> mutant supports the idea that ABA is indeed a signal for the expression of Hsps in *C. roseus*.

The role of proteins other than the known Hsps in thermotolerance in plants, analogous to that in yeast (Smith and Yaffe 1991), is not known. The Abo<sup>-</sup> mutant offers opportunities to dissect heat inducible Hsps, constitutive Hsps and non-Hsps involved in thermotolerance in *C. roseus*.

The *abo* *abo* mutant of *C. roseus* is drought tolerant. Unlike the Abo<sup>+</sup> seeds, Abo<sup>-</sup> seeds germinated in a medium containing 200 mM NaCl. The adult plants of Abo<sup>-</sup> withstood stresses imposed by high salinity and irrigation withdrawal much better than Abo<sup>+</sup> plants. The *C. roseus* Abo<sup>-</sup> and Abo<sup>+</sup> seedlings and adult plants increased their proline and betaine contents upon exposure to salinity, high temperature and water deficiency stresses by about 1.1- to 1.9-fold. Interestingly, increased in *C. roseus* plants. The level of proline upon exposure to osmotic stress as well as heat stress. Under the salinity, drought and temperature stress conditions, the contents of proline were higher in the Abo<sup>-</sup> and Abo<sup>+</sup> seedlings and plants than unstressed plants of *C. roseus*. The results are consistent with the idea that although proline and betaine accumulation were inducible by abiotic stress in Abo<sup>-</sup> and Abo<sup>+</sup> plants; however, the Abo<sup>-</sup> plants accumulated additional proline and betaine constitutively, the latter on account of the constitutive synthesis of ABA. These results suggested indicate that in *C. roseus*, the role of ABA is insignificant in the proline and betaine accumulation in response induction caused by abiotic stresses. It is suggested that stress and ABA imposed signal transductions for compatible solute synthesis operate independently in *C. roseus*.

The addition of Abo<sup>-</sup> mutant of *C. roseus*, to the available collection of plant mutants related with the synthesis/degradation and functions of ABA, should help us in understanding the role of ABA in the regulation of cellular dynamics and morphogenesis in plants (figure 6).

### Acknowledgements

Grateful thanks are due to the Department of Biotechnology, New Delhi for their partial support of this project. Help of R N Kulkarni and B R Tyagi in providing the starting seed material of *C. roseus*, of S Sharma in statistical analyses and of G D Bagchi in photomicrography is gratefully acknowledged.

### References

- Anonymous 1966 Rauvalfia dry extract; in *Pharmacopoeia of India* (New Delhi: Ministry of Health) pp 632–633
- Bates L S, Woldren R P and Teare I D 1973 Rapid determination of free proline for water stress studies; *Plant Soil* **39** 205–208
- Blasko G and Cordell G A 1990 Isolation structure elucidation and biosynthesis of bis-indole alkaloids of *Catharanthus*, in *The alkaloids* (eds) A Brossi and M Suffness (San Diego: Academic Press) p 371
- Brewbaker J L and Kwack B Y 1963 The essential role of calcium ion in pollen germination and pollen tube growth; *Am. J. Bot.* **50** 859–865
- Burbidge A, Grieve T M, Parker R and Taylor I B 1998 Isolation and characterization of abscisic acid biosynthesis genes in the tomato; *J. Exp. Biol. (Suppl.)* **49** 18
- Burke J J, U'Mohany P J and Oliver M J 2000 Isolation of *Arabidopsis* mutants lacking components of acquired thermotolerance; *Plant Physiol.* **123** 575–587
- Busk P K, Jensen A B and Pages M 1997 Regulatory elements *in vivo* in the promoter of the abscisic acid responsive gene *rab 17* from maize; *Plant J.* **11** 1285–1295
- Campalans A, Messegueur R, Goday A and Pages M 1999 Plant responses to drought from ABA signal transduction events to the action of the induced proteins; *Plant Physiol. Biochem.* **37** 327–340
- Chandler P M and Robertson M 1994 Gene expression regulated by abscisic acid and its relation to stress tolerance; *Annu. Rev. Plant Physiol. Plant Mol. Biol.* **45** 113–141
- Close T J 1996 Dehydrins emergence of a biochemical role of a family of plant dehydration proteins; *Physiol. Plant.* **97** 795–803
- Covic L, Silva N F and Lew R R 1999 Functional characterization of ARAKIN (ATMEKKI) a possible mediator in an osmotic stress response pathway in higher plants; *Biochim. Biophys. Acta* **145** 242–254
- Creelman R A, Mason M S, Beusen R J, Boyer J S and Mullet J E 1990 Water deficit and abscisic acid cause differential inhibition of shoot versus root growth in sugar accumulation and gene expression; *Plant Physiol.* **92** 205–214
- Cutler S, Ghassemian M, Bonetta D, Cooney S and McCourt P 1996 A protein farnesyl transferase involved in abscisic acid signal transduction in *Arabidopsis*; *Science* **273** 1239–1241
- DeLauny A J and Verma D P S 1993 Proline biosynthesis and osmoregulation in plants; *Plant J.* **4** 215–223
- DeLuca V 1993 Enzymology of indole alkaloid biosynthesis; in *Methods in plant biochemistry enzymes of secondary metabolism* (ed.) P F Lea (London: Academic Press) vol 9, pp 345–368
- Duckham S C, Taylor I B, Linforth R S T, Al-Naieb R J, Marples B A and Bowman W R 1989 The metabolism of cis ABA aldehyde by the wilted mutants of potato, pea and *Arabidopsis thaliana*; *J. Exp. Bot.* **217** 901–905
- Foster R and Chua N H 1999 An *Arabidopsis* mutant with deregulated ABA gene expression implications for negative regulator function; *Plant J.* **17** 363–372
- Garello G and Le Page-Degivry M T 1999 Evidence for the role of abscisic acid in the genetic and environmental control of dormancy in wheat (*Triticum aestivum* L.); *Seed Sci. Res.* **9** 219–226
- Grieve C M and Grattan S R 1983 Rapid assay for determination of water soluble quaternary ammonium compounds; *Plant Soil* **70** 303–307
- Guan L M, Zhao J and Scandalios J G 2000 Cis-elements and trans-factor that regulate expression of the maize *Cat1* antioxidant gene in response to ABA and osmotic stress: H<sub>2</sub>O<sub>2</sub> is the likely intermediary signaling molecule for the response; *Plant J.* **22** 87–96
- Heslop-Harrison J and Heslop-Harrison Y 1970 Evaluation of pollen viability by enzymatically induced fluorescence intracellular hydrolysis of fluorescence diacetate; *Stain Tech.* **45** 115–120
- Hong S W, Jon J H, Kawak J M and Nam H G 1997 Identification of a receptor like protein kinase gene rapidly induced by abscisic acid dehydration, high salt and cold treatments in *Arabidopsis thaliana*; *Plant Physiol.* **113** 1203–1212
- Hurry V, Anderson J M, Chow W S and Osmond C B 1997 Accumulation of zeaxanthin in abscisic acid deficient mutants of *Arabidopsis* does not affect chlorophyll fluorescence quenching or sensitivity to photoinhibition *in vivo*; *Plant Physiol.* **113** 639–648
- Kamisaka and Larsen P 1977 Improvement of indole- $\alpha$ -pyrone fluorescence method for quantitative determination of endogenous IAA in lettuce seedlings; *Plant Cell Physiol.* **18** 595–602
- Knegt E and Bruinsma J 1973 A rapid sensitive and accurate determination of indolyl-3-acetic acid; *Phytochemistry* **12** 753–756
- Koorneef M, Revling G and Karssen C M 1984 The isolation and characterization of abscisic acid insensitive mutants of *Arabidopsis thaliana* (L.) Heynh; *Theor. Appl. Genet.* **61** 385–393
- Kraepiel Y, Rousselin P, Sotta B, Kerhies L, Finhorn J, Caboche M and Migoniniae E 1994 Analysis of phytochrome and ABA deficient mutant suggests that ABA degradation is controlled by light in *Nicotiana plumbaginifolia*; *Plant J.* **6** 665–672
- Kulkarni R N, Kalra A and Ravindra N S 1992 Integration of soil solarization with host resistance in the control of die back and collar and root rot diseases in Periwinkle; *Trop. Agric.* **69** 217–222
- Lecocur J, Wery J, Ture O and Tardien F 1995 Expansion of pea leaves subjected to short water deficit: cell number and cell size are sensitive to stress at different periods of leaf development; *J. Exp. Bot.* **46** 1093–1101
- Leung J and Giraudat J 1990 Abscisic acid signal transduction; *Annu. Rev. Plant Physiol. Plant Mol. Biol.* **49** 199–222
- Linforth R S T, Browman W R, Griffin D A, Marples B A and Taylor I B 1987 2-trans-ABA alcohol accumulates in the wilted tomato mutants *flacca* and *sitiens*; *Plant Cell Environ.* **10** 599–606
- Liottenberg S, North H and Marion-Poll A 1999 Molecular biology and regulation of abscisic acid biosynthesis in plants; *Plant Physiol. Biochem.* **37** 341–350
- Lopez-Molina L and Chua N H 2000 A null mutation in a bZIP factor confers ABA insensitivity in *Arabidopsis thaliana*; *Plant Cell Physiol.* **41** 541–547

- Marlin E, Nussaume L, Quesada A, Gonneau M, Sotta B, Huguency P, Frey A and Marion-Poll A 1996 Molecular identification of zeaxanthin epoxidase of *Nicotiana plumbaginifolia* a gene involved in abscisic acid biosynthesis and corresponding to the ABA locus of *Arabidopsis thaliana*; *EMBO J.* **15** 2331–2342
- McCarty D R, Hattori T, Carson C B, Vasil V, Lazor M and Vasil I K 1991 The viviparous-1 developmental gene of maize encodes a novel transcriptional activator; *Cell* **66** 895–905
- Mittler R and Zilinska B A 1994 Regulation of pea cytosolic ascorbate peroxidase and other anti-oxidant enzymes during the progression of drought stress and following recovery from drought; *Plant J.* **5** 397–405
- Netting A G 2000 pH, abscisic acid and the integration of metabolism in plants under stressed and non-stressed conditions; cellular responses to stress and their implication for plant water relations; *J. Exp. Bot.* **51** 147–158
- Ono A, Izawa T, Chua N H and Shimamoto K 1996 The *rab 16B* promoter of rice contains two distinct abscisic acid responsive elements; *Plant Physiol.* **112** 483–491
- Prandl R, Hinderhifer K, Eggers-Schumacher G and Schoft I F 1998 *HSF3* a new heat shock factor from *Arabidopsis thaliana* depresses the heat shock response and confers thermotolerance when over expressed in transgenic plants; *Mol. Gen. Genet.* **258** 269–278
- Queitsch C, Hong S W, Vierling E and Lindquist S 2000 Heat shock protein 101 plays a crucial role in thermotolerance in *Arabidopsis*; *Plant Cell* **12** 479–492
- Quesada V, Ponce M R, and Micol J L 2000 Genetic analysis of salt tolerant mutants in *Arabidopsis thaliana*; *Genetics* **154** 421–436
- Raskin I and Ladyman J A R 1988 Isolation and characterization of a barley mutant with abscisic acid stomata; *Planta* **173** 73–78
- Rousselin P, Kraepiel Y, Maldiney R, Miginiac E and Caboche M 1992 Characterization of three hormone mutants of *Nicotiana plumbaginifolia* evidence for a common ABA deficiency; *Theor. Appl. Genet.* **85** 213–221
- Rubio F, Gassman W and Schroeder J I 1995 Sodium driven uptake by the plant potassium transporter HKT1 and mutations conferring salt-tolerance; *Science* **270** 1660–1662
- Sakamoto A and Murata N 2000 Genetic engineering of glycinebetaine synthesis in plants : Current status and implications for enhancement of stress tolerance; *J. Exp. Bot.* **51** 81–88
- Schwartz H, Leon-Kloosterziel K M, Koornneef M and Zeevart J A D 1997 Biochemical characterization of the *aba2* and *aba3* mutants in *Arabidopsis thaliana*; *Plant Physiol.* **114** 161–166
- Shinozaki K and Yamaguchi-Shinozaki K 1997 Gene expression and signal transduction in water stress response; *Plant Physiol.* **115** 327–334
- Shinozaki K and Yamaguchi-Shinozaki K 1996 Molecular responses to drought and cold; *Stress Curr. Opin. Biotechnol.* **7** 161–167
- Smith J L, Smart N J, Kurz W G M and Misawa M 1987 Stimulation of indole alkaloid production in cell suspension cultures of *Catharanthus roseus* by abscisic acid; *Planta Med.* **53** 470–474
- Smith B J and Yaffe M P 1991 Uncoupling thermotolerance from induction of heat shock proteins; *Proc. Natl. Acad. Sci. USA* **88** 11091–11094
- Söderman E, Mattsson J and Engstrom P 1996 The *Arabidopsis* homeobox gene *ATHB-7* is induced by water deficit and by abscisic acid; *Plant J.* **10** 375–381
- St Pierre B, Vazquez Flota F A and DeLuca V 1999 Multicellular compartmentation of *Catharanthus roseus* alkaloid biosynthesis predicts intercellular translocation of a pathway intermediate; *Plant Cell* **11** 887–900
- Sturaro M, Vernieri P, Castiglioni P, Binelli G and Gavazzi G 1996 The *rea* (red embryonic axis) phenotype describes a new mutation affecting the response of maize embryo to abscisic acid and osmotic stress; *J. Exp. Biol.* **47** 705–712
- Tan B C, Schwartz S H, Zeevaart J A D and McCarty D R 1997 Genetic control of abscisic acid biosynthesis in maize; *Proc. Natl. Acad. Sci. USA* **94** 12235–12240
- Vazquez-Flota F, De Carolis E, Alareo A M and DeLuca V 1997 Molecular cloning and characterization of desacetoxylindoline-4-hydroxylase a 2-oxo-glutamate dependent dioxygenase involved in biosynthesis of vindoline in *Catharanthus roseus* (L.) G Don; *Plant Mol. Biol.* **34** 935–948
- Wang H, Qi Q, Schorr P, Cutler A J, Crosby W L and Fowke L C 1998 *Ick1* a cyclin-dependent protein kinase inhibitor from *Arabidopsis thaliana* interacts with both *cdc 2a* and *CycD3* and its expression is induced by abscisic acid; *Plant J.* **15** 501–510
- Williams R J, Bulman M, Huttly A, Phillips A and Neil S 1994 Characterization of a cDNA from *Arabidopsis thaliana* encoding a potential thiol protease whose expression is induced independently by wilting and abscisic acid; *Plant Mol. Biol.* **25** 259–270
- Wu S J, Ding L and Zhu J K 1996 *sos 1* a genetic locus essential for salt tolerance and potassium acquisition; *Plant Cell* **8** 617–627
- Zeevart J A D and Creelman R A 1988 Metabolism and physiology of abscisic acid; *Annu. Rev. Plant Physiol. Plant Mol. Biol.* **39** 439–473

MS received 25 September 2000; accepted 8 January 2001

Corresponding editor: MAN MOHAN JOHRI