

American Journal of Biochemistry and Biotechnology 3 (4): 193-198, 2007

ISSN 1553-3468

© 2007 Science Publications

Identification and functional characterization of a novel lysine-rich protein from *Entamoeba histolytica*¹Alka Mehra, ²Sudha Bhattacharya and ^{1,3}Alok Bhattacharya
¹School of Life Sciences, ²School of Environmental Sciences and ³School of Information Technology, Jawaharlal Nehru University, New Delhi, India

Abstract: In an attempt to understand the role of genes with no known function, in the protozoan parasite *Entamoeba histolytica*, an analysis of the proteome was carried out and a Lysine-Rich protein (KRP) was identified for further study. This protein has a modular structure with four domains and was found to be expressed and localized to the cell surface of *E. histolytica* trophozoites. The KRP over expressing cells were 80% less virulent as compared to the cells under expressing the gene as determined by the ability of the cells to kill *in vitro* target cells. The results suggest that KRP may have a role in the cytopathogenesis of the parasite.

Key words: *Entamoeba histolytica*, lysine, serine, surface protein, lysozyme, cytopathic

INTRODUCTION

The cell surface of the protozoan parasite *Entamoeba histolytica* has been characterized using a number of approaches and attempts have been made to associate pathogenicity with presence or absence of a few molecules or with some cell surface characteristics^[1,2,3]. Among many reported cell surface proteins only a few have been characterized in detail^[4]. Some of the molecules, such as SREHP (serine-rich *E. histolytica* protein), Ariel (asparagine rich antigen) are immunogenic and being used either as diagnostic marker for invasive disease or have potential to be a vaccine candidate^[5,6,7]. The SREHP and Ariel proteins have multiple tandem repeats consisting of hydrophilic octapeptide sequences E-A-S-S-S/T-D/N-K-P and D/N/S-E-S-S-D/N-N-K-P respectively^[8,9,10]. They also possess N-terminal signal and C-terminal hydrophobic anchor sequences. The structural motifs of SREHP resemble some of the repetitive antigens of malarial parasite, especially the circumsporozoite protein^[11]. SREHP is known to show extensive polymorphism particularly in the repetitive region. These polymorphisms have been used to type clinical isolates and attempts have been made to link the polymorphisms with clinical features of the patients^[6,12]. Homolog of SREHP is also found in nonpathogenic species *E. dispar*. The Ariel protein family is polymorphic with varying number of octapeptide repeats in different members^[10]. This gene family was reported to be absent in the nonpathogenic species *Entamoeba dispar*^[3]. In this report we describe

one such protein, the lysine rich protein (KRP), containing a serine-rich repetitive motifs and a lysine-rich domain and show that it may be functionally important for *E. histolytica*.

MATERIALS AND METHODS

Nucleotide and protein sequences of all target genes were retrieved from the *E. histolytica* genome database (<http://www.ncbi.nlm.nih.gov>). The BLAST sequence similarity search was done against the *E. histolytica* genome database (12.5X coverage, that is the final assembled genome sequence) at The Institute of Genome Research (<http://www.tigr.org/tdb/e2k1/eha1>), the Wellcome Trust's Sanger Institute (http://www.sanger.ac.uk/Projects/E_histolytica) and NCBI. Determination of amino acid composition was performed using a set of tools available at www.expasy.ch.

All experiments were carried out with *E. histolytica* strain HM-1:IMSS clone 6 as described before^[13]. Cell viability was determined by microscopy using trypan blue dye exclusion test. CV1 (Monkey African Green kidney fibroblast) cell line was cultured in Dulbecco's modified Eagle's medium (DMEM) (Gibco) supplemented with 9% fetal bovine serum, penicillin and streptomycin. Transfection of *E. histolytica* trophozoites was performed by electroporation as described previously^[13].

Northern Analysis: RNA was isolated from *E. histolytica* strain HM1: IMSS using Tripure reagent (Roche, USA) as per the manufacturer's protocol. Thirty microgram of total RNA from mid log phase cells was resolved on a 1.2% denaturing agarose-formaldehyde gel and blotted onto a nylon membrane.

Corresponding Author: Alok Bhattacharya, School of Life Sciences, Jawaharlal Nehru University, New Delhi, India.
Tel.: +91 11 2670 4516; Fax: +91 11 2671 7586

scale. The numbers below the line indicate the amino acid residues. S.P. is the signal peptide.

B. Amino acid sequence of KRP. The tandem imperfect repeats in the serine-rich domain are enclosed in boxes. There are six tandem imperfect repeats with the repeat motif of STPSTDGNTPSGD. These are followed by four perfect repeats of NTPSSSS. These repeats are followed by two imperfect repeats.

Sequence analysis suggested that there is no homolog of KRP in other organisms, in terms of sequence similarity and domain organization. Interspecies conservation of genes can often be indicative of functional importance. In order to find out if an ortholog of this protein exists in any other species of *Entamoeba*, sequence similarity searches were carried out. A putative homolog showing similarity across the major part of the protein was found in non pathogenic sibling species *Entamoeba dispar* (contig aanv01000649). However, the first exon and intron were not found. This region encodes the signal sequence and part of the lysozyme domain. Since the *E. dispar* protein may be cytoplasmic without the intact lysozyme domain it is likely this domain may have a role in pathogenesis.

The presence of an ORF alone is not sufficient to indicate that *E. histolytica* possesses a functional KRP protein. Often computational prediction of genes is inaccurate. In order to show that the sequence is not a pseudogene, the expression of this gene was checked in actively growing trophozoites by northern and western analysis. Northern analysis revealed an RNA band of 2.2 kb (Fig. 1C). The band was of expected size based on the transcription of the entire ORF. Western blot analysis was carried out using an antibody raised against the recombinant serine-rich domain (amino acid residue 188 to 349). A 85 kDa band was observed. This was close to the theoretical size of 82 kDa (Fig. 1D). Thus, the full length KRP is expressed in the trophozoites of *E. histolytica*, suggesting that the theoretical prediction is accurate and the gene is functionally active. This is important as the assembly of

the *E. histolytica* genome may still not be final and there may be errors due to highly repetitive nature of the genome. The antibody (polyclonal anti-KRP raised in rabbit) was also used to localize KRP protein in the cell. Western blot analysis using fractionated cell lysate showed immunoreactivity to be present in the membrane fraction (Fig. 1E). This was further confirmed by immunofluorescence. The staining was found to be associated with the plasma membrane suggesting it to be a cell surface protein (Fig. 1F).

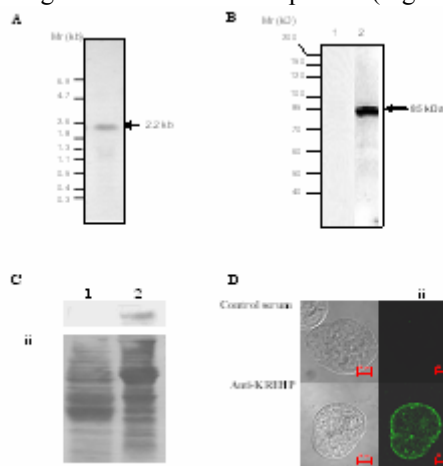


Fig. 2:

- Expression of KRP in *E. histolytica* trophozoites by Northern Analysis. The hybridization signal was seen by autoradiography and was observed to be 2.2 kb in size.
- Expression of KRP in *E. histolytica* trophozoites by Western Analysis. The anti-KRP was raised by immunizing rabbit with the purified recombinant central serine rich domain. The lane 1: control serum and lane 2: anti-KRP antibody.
- Subcellular localization of KRP by Western Analysis and cell fractionation. Hundred micrograms of the different fraction was analyzed by western blotting with anti-KRP antibody (Panel i). The parallel lanes were stained with Coomassie blue to indicate the amount of protein loaded onto each lane (Panel ii). Lane 1: cytosol and Lane 2: membranes.

D. Immunostaining. The panel (i) shows the phase contrast images while panel (ii) shows the fluorescent images. Bar: 10 μ m.

The data presented above indicated that KRP may be one of the genes that do not have any known function. Therefore, to understand the function of this gene a functional genomic approach was used. Since the ploidy of *E. histolytica* is high and no method is yet available for integrating DNA fragments to chromosomes, an approach was taken to overexpress and underexpress the gene in *E. histolytica* cells using a constitutive expression vector [13]. The gene was cloned in both sense (pKRP-S) and antisense (pKRP-AS) orientation (see Fig. 2A) using a PCR based approach as described in the figure legend. The orientation of the constructs was confirmed by sequencing. These constructs were transfected into *E. histolytica* cells to establish EhKRP-S and EhKRP-AS cell lines which were maintained in the presence of 10 μ g/ml G418. All the experiments were carried out with transfectants grown in the presence of 50 μ g/ml G418 for 48 h. The level of the KRP transcript in the transformed cell lines was checked by northern analysis using single stranded probes (Fig. 2B). The antisense probe hybridized to a transcript of about 550 nucleotides derived from EhKRP-AS cells whereas no antisense transcript was observed in EhKRP-S cells (Fig. 2B, i). On the other hand sense strand-specific probe did not hybridize to any band in the antisense cell line but hybridized to a 2.2 kb band, corresponding to the full length transcript, from an RNA preparation derived from EhKRP-S cells (Fig. 2B, ii). These results confirmed that the transformants expressed the cloned KRP gene in the expected manner. This was further confirmed by western analysis of the total cell lysates from EhKRP-S and EhKRP-AS cell lines using anti-KRP antibody (Fig. 2C).

Different parameters such as growth, erythrophagocytosis and cytopathic ability were used to assess phenotypic changes in the EhKRP-S and EhKRP-AS cells. These properties are often used as markers for assessing the virulent potential of *E. histolytica* cells [17,18,19]. The results of a cytopathic assay using the CV1 monolayer is shown in Fig. 2D. The data is represented as percentage of monolayer destruction as compared to the untransfected cells. The *E. histolytica* cells transfected with the parental plasmid, pEh-Neo-GFP (Ehgf) and grown in the presence of 50 μ g/ml of G418 for 48 h were also used as a control in the experiment. Interestingly,

overexpression of KRP led to 80% decrease in the cytopathic property. On the other hand, there was only 20-30% reduction in the ability of EhKRP-AS cells to kill CV-1 cells. No significant difference was observed in erythrophagocytosis and cell proliferation among the three cell lines (data not shown). This data suggests that KRP may be involved in modulation of cytopathic properties of *E. histolytica*. It appears that it may not be directly involved in cytopathogenesis, as there was only 20-30% reduction in cell killing on antisense blocking by antisense approach. Absence of this gene in nonpathogenic species of *Entamoeba* also supports the suggestion that this gene has a role in cytopathogenesis.

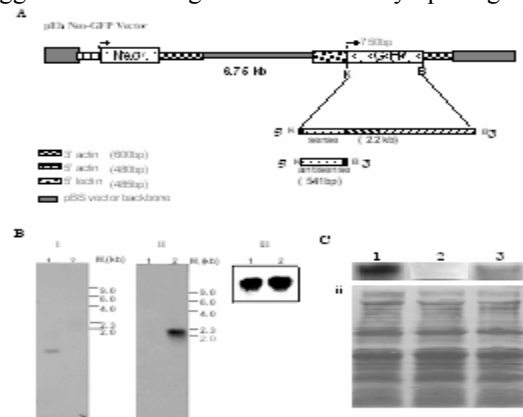


Fig. 3: Overexpression and underexpression of KRP in *E. histolytica* trophozoites and cytopathic assay.

- A. Schematic representation of the constitutive expression vector pEh Neo-GFP used for transfection. The GFP gene of the shuttle vector pEh Neo-GFP was excised by the KpnI (K) and BamHI (B) and replaced with the *kfp* gene in the sense orientation or antisense orientation. Appropriate restriction sites were employed in the primers used for PCR amplification of the *kfp* gene for cloning in the sense and the antisense orientation. Only initial 541 bp of the *kfp* gene was amplified and used for antisense blocking of the KRP expression. These constructs were stably transfected in *E. histolytica* trophozoites and all the experiments were carried out with cell lines grown in presence of 50 μ g/ml of G418 for 48 h.
- B. Northern analysis of the cell lines transfected with EhKRP-S and EhKRP-AS construct. Lane1: RNA from Eh KRP-AS, lane 2: RNA

from Eh KRP-S. Hybridization with rDNA probe was used to show equal loading of the RNA. The probes used are as indicated:

i, antisense strand-specific; ii, sense strand-specific; iii, rRNA.

- C. Western analysis of the cell lines transfected with EhKRP-S and EhKRP-AS construct. The membrane was incubated with anti KRP antibody and further stained with the HRPO-labeled second antibody (Panel i). The parallel lanes were stained with Coomassie blue to check for equal loading (Panel ii). Lane 1: EhKRP-S, lane 2: EhKRP-AS, lane 3: Ehgfp transfectants.

There is not enough data to speculate about the mechanism by which KRP may influence virulence properties of *E. histolytica*. It is likely that KRP inhibits target cell killing by mopping certain virulence effector molecules. Therefore, overexpression of this molecule induces the dominant negative phenotype. At low level of expression in normal cells it may have other functions. Three of the genes that contain regions rich in charged amino acids, such as lysine and glutamic acid are down regulated in abscess-derived trophozoites of *E. histolytica*^[20]. Other than shared repetitive stretches of the amino acid sequence PKKEEKPP, there was no similarity among these proteins suggesting that proteins containing charged amino acid-rich domains may play an important role in virulence^[20]. The other likely mechanism can be due to its ability to block cell surface signaling if present in high numbers. Detailed experiments are underway to understand this phenomenon. Further studies on the function of this protein may throw important light on its role in pathogenesis.

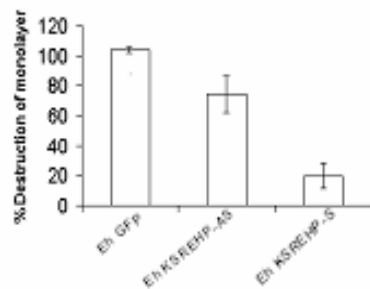


Fig. 4: Cytopathic properties of EhKRP-AS and EhKRP-S cells. The indicated transfectants EhKRP-S, EhKRP-AS and Ehgfp were grown in the presence of 50 µg/ml of G418 for 48 h. The amoebae (10^5) were plated over a

confluent CV-1 monolayer in 24 well plates for 1h. The adhering amoebae were removed by chilling and the remaining monolayer was stained with methylene blue and absorbance was measured at 660nm. The data is represented as percent (%) destruction of the CV1 monolayer in comparison to untransfected HM-1 cells.

ACKNOWLEDGMENTS

Alka Mehra would like to thank CSIR for a scholarship. The authors would like to thank Dr. Rakesh Tyagi (Special Centre for Molecular Medicine, Jawaharlal Nehru University, New Delhi, India) for providing mammalian CV 1 cells. Research support from DST, DBT and CSIR, Government of India is gratefully acknowledged.

REFERENCES

1. Araiza-Orozco, L.M., E. E. Avila-Muro, M.L. Munoz, and S. Arias-Negrete, 1997. Entamoeba histolytica: role of surface proteases on its virulence. Arch Med Res. 28, 175-7
2. Mirelman, D., S. Moody-Haupt, S. Becker, Y. Nuchamowitz, R. Bracha, and R. Alon, R., 1996. Cell surface molecules of pathogenic and nonpathogenic Entamoeba histolytica and their relation to virulence. Adv Exp Med Biol. 408, 225-7
3. Willhoeft, U., H. Buss and E. Tannich, 1999. DNA sequences corresponding to the ariel gene family of Entamoeba histolytica are not present in E. dispar. Parasitol Res. 85, 787-9
4. Espinosa-Cantellano, M. and A. Martinez-Palomo, 1991. The plasma membrane of Entamoeba histolytica: structure and dynamics. Biol. Cell. 72, 189-200
5. Petri, W.A. Jr., T. F. Jackson, V. Gathiram, K. Kress, L.D. Saffer, T.L. Snodgrass, M.D. Chapman, Z. Keren and D. Mirelman, 1990. Pathogenic and nonpathogenic strains of Entamoeba histolytica can be differentiated by monoclonal antibodies to the galactose-specific adherence lectin. Infect and Immun. 58, 1802-6
6. Simonishvili, S., S. Tsanava, K. Sanadze, R. Chlikadze, A. Miskalishvili, N. Lomkatsi, P. Imnadze, W.A. Petri Jr. and N. Trapaidze, 2005. Entamoeba histolytica: the serine-rich gene polymorphism-based genetic variability of clinical isolates from Georgia. Exp Parasitol. 110, 313-7

7. Zhang, T. and S.L. Stanley Jr., 1999. DNA vaccination with the serine rich *Entamoeba histolytica* protein (SREHP) prevents amebic liver abscess in rodent models of disease. *Vaccine*. 18, 868-74
8. Kohler, S. and E. Tannich, 1993. A family of transcripts (K2) of *Entamoeba histolytica* contains polymorphic repetitive regions with highly conserved elements. *Mol Biochem Parasitol*. 59, 49-58
9. Li, E., C. Kunz-Jenkins and S. L. Stanley Jr., 1992. Isolation and characterization of genomic clones encoding a serine-rich *Entamoeba histolytica* protein. *Mol. Biochem. Parasitol*. 50, 355-357
10. Mai, Z. and J. Samuelson, 1998. A new gene family (ariel) encodes asparagine-rich *Entamoeba histolytica* antigens, which resemble the amebic vaccine candidate serine-rich *E. histolytica* protein. *Infect and Immun*. 66, 353-5
11. Stanley, S.L. Jr., A. Becker, C. Kunz-Jenkins, L. Foster and E. Li, 1990. Cloning and expression of a membrane antigen of *Entamoeba histolytica* possessing multiple tandem repeats. *Proc. Natl. Acad. Sci. U S A*. 87, 4976-80
12. Haghghi, A., S. Kobayashi, T. Takeuchi, G. Masuda and T. Nozaki, 2002. Remarkable genetic polymorphism among *Entamoeba histolytica* isolates from a limited geographic area. *J Clin Microbiol*. 40, 4081-90
13. Hamann, L., R. Nickel and E. Tannich, 1995. Transfection and continuous expression of heterologous genes in the protozoan parasite *Entamoeba histolytica*. *Proc Natl Acad Sci U S A*. 92, 8975-9
14. Jacobs, T. and M. Leippe, 1995. Purification and molecular cloning of a major antibacterial protein of the protozoan parasite *Entamoeba histolytica* with lysozyme-like properties. *Eur J Biochem*. 231, 831-838
15. Nickel, R., Jacobs, T., Leippe, M., 1998. Molecular characterization of an exceptionally acidic lysozyme-like protein from the protozoan *Entamoeba histolytica*. *FEBS Lett*. 437, 153-7
16. Fouche, P.B. and J.H. Hash, 1978. The N,O-diacetylmuramidase of *Chalaropsis* species. Identification of aspartyl and glutamyl residues in the active site. *J Biol Chem*. 253, 6787-93
17. Aley, S.B., Z. A. Cohn and W. A. Scott, 1984. Endocytosis in *Entamoeba histolytica* Evidence for a unique non-acidified compartment. *J. Exp. Med*. 160, 724-737.
18. Alon, R.N., R. Bracha and D. Mirelman, 1997. Inhibition of expression of the lysine-rich 30 kDa surface antigen of *Entamoeba dispar* by the transcription of its antisense RNA. *Mol. Biochem. Parasitol*. 90, 193-201
19. Orozco, E., G. Guarneros, A. Martinez-Palomo and T. Sanchez., 1983. *Entamoeba histolytica*. Phagocytosis as a virulence factor. *J. Exp. Med*. 158, 1511-1521
20. Bruchhaus, I., T. Roeder, H. Lotter, M. Schwerdtfeger and E. Tannich, 2002. Differential gene expression in *Entamoeba histolytica* isolated from amoebic liver abscess. *Mol. Microbiol*. 44, 1063-72.