



# DIGITAL ACCESS TO SCHOLARSHIP AT HARVARD

## Foundation species loss affects vegetation structure more than ecosystem function in a northeastern USA forest

The Harvard community has made this article openly available. [Please share](#) how this access benefits you. Your story matters.

<b>Citation</b>	Orwig, David A., Audrey A. Barker Plotkin, Eric A. Davidson, Heidi Lux, Kathleen E. Savage, and Aaron M. Ellison. 2013. Foundation species loss affects vegetation structure more than ecosystem function in a northeastern USA forest. PeerJ 1: e41.
<b>Published Version</b>	<a href="https://doi.org/10.7717/peerj.41">doi:10.7717/peerj.41</a>
<b>Accessed</b>	February 19, 2015 1:39:39 PM EST
<b>Citable Link</b>	<a href="http://nrs.harvard.edu/urn-3:HUL.InstRepos:11315415">http://nrs.harvard.edu/urn-3:HUL.InstRepos:11315415</a>
<b>Terms of Use</b>	This article was downloaded from Harvard University's DASH repository, and is made available under the terms and conditions applicable to Other Posted Material, as set forth at <a href="http://nrs.harvard.edu/urn-3:HUL.InstRepos:dash.current.terms-of-use#LAA">http://nrs.harvard.edu/urn-3:HUL.InstRepos:dash.current.terms-of-use#LAA</a>

*(Article begins on next page)*



23 increased immediately after logging and two years after girdling, due to increased light and soil  
24 temperatures and nutrient pulses from leaf-fall and reduced uptake following tree death. The  
25 results from this study illuminate ecological processes underlying patterns observed  
26 consistently in region-wide studies of adelgid-infested hemlock stands. Mechanisms of *T.*  
27 *canadensis* loss determine rates, magnitudes, and trajectories of ecological changes in hemlock  
28 forests. Logging causes abrupt, large changes in vegetation structure whereas girdling (and by  
29 inference, *A. tsugae*) causes sustained, smaller changes. Ecosystem processes depend more on  
30 vegetation cover *per se* than on species composition. We conclude that the loss of this late-  
31 successional foundation species will have long-lasting impacts on forest structure but more  
32 subtle impacts on ecosystem function.

33

## 34 **Introduction**

35 Changes in the distribution and abundance of canopy trees have system-wide impacts on  
36 ecological processes in forests (Lovett *et al.* 2006; Wardle *et al.* 2011; Hicke *et al.* 2012).  
37 Changes in species composition and associated ecological impacts also lead to changes in the  
38 values – including economic, utilitarian, and aesthetic – that we place on forest ecosystems  
39 (*e.g.*, Aukema *et al.* 2011; Cardinale *et al.* 2012). The vast majority of studies of the impacts of  
40 species loss on ecological processes in forests and other ecosystems have examined how  
41 changes in the absolute number (or percent) of species lost affects a wide range of ecosystem  
42 services (recently reviewed by Wardle *et al.* 2011; Cardinale *et al.* 2012; Hooper *et al.* 2012;  
43 Naeem, Duffy & Zavaleta 2012). However, species are not lost from ecosystems at random  
44 (*e.g.*, Bunker *et al.* 2005) and it remains an open question whether particular species with  
45 particular characteristics will disproportionately change how ecosystems function (Bunker *et al.*  
46 2005; Suding *et al.* 2008; B. Baiser & A. M. Ellison unpublished data).

47 Foundation species (*sensu* Ellison *et al.* 2005a) define and structure many terrestrial,  
48 aquatic, and marine ecosystems, yet because foundation species often are abundant and  
49 widespread, their role in structuring ecosystems is often underappreciated or taken for  
50 granted, and they are rarely of explicit conservation interest (Gaston 2010). Ellison *et al.*  
51 (2005a) suggested that the loss of foundation species can cause strong, widespread, and long-  
52 lasting changes to forest ecosystems because forest-wide biological diversity and ecosystem  
53 processes such as primary productivity and fluxes of energy and nutrients are hypothesized to  
54 depend more on foundation species than on any other species in the system.

55           Examples where loss of dominant, and possibly foundational, tree species have had  
56 large impacts on forest ecology include: regional loss of associated fauna as white pines (*Pinus*  
57 subgenus *strobus*) in western North America succumb to white pine blister rust (*Cronartium*  
58 *ribicola* A. Dietr.); changes in canopy structure as a result of fire suppression, irruptions of  
59 mountain pine beetle (*Dendroctonus ponderosae* Hopkins), and climatic change (Kendall &  
60 Keane 2001; Tomback & Achuff 2010); shifts in understory composition, recruitment, and  
61 regeneration dynamics following loss of American beech (*Fagus grandifolia* Ehrh.), American  
62 chestnut (*Castanea dentata* (Marsh.) Borkh.) or American elm (*Ulmus americana* L.) due to  
63 beech-bark disease (*Nectria coccinea* (Pers. ex. Fr.) Fries var. *faginata* Lohman, Watson and  
64 Ayers), chestnut blight (*Cryphonectria parasitica* (Murrill) Barr.), and Dutch elm disease  
65 (*Ceratocystis ulmi* (Buism.) C. Moreau), respectively (McBride 1973; Houston 1975; Barnes  
66 1976; Huenneke 1983; Twery & Patterson 1984; Myers, Walck & Blum 2004; Lovett *et al.* 2006);  
67 changes in faunal (Wills 1993) and macrofungal diversity (Anderson *et al.* 2010), and functional  
68 diversity of soil bacteria involved in carbon and nitrogen cycling (Cai *et al.* 2010) following loss  
69 of *Eucalyptus* to *Phytophthora* outbreaks in Australia; bottom-up control by *Populus* spp. of  
70 associated herbivorous arthropod populations, which in turn mediates how insectivorous birds  
71 influence future tree growth in the southwestern United States (Bridgeland *et al.* 2010); and  
72 the dependence of benthic biological diversity, productivity, and nutrient cycling on a handful  
73 of species in mangrove forests (*e.g.*, Nagelkerken *et al.* 2008; Barbier *et al.* 2011).

74           *Tsuga canadensis* (L.) Carr. (eastern hemlock), an hypothesized foundation tree species  
75 (Ellison *et al.* 2005a), covers  $\approx 10\,000\text{ km}^2$  and comprises  $\approx 2 \times 10^8\text{ m}^3$  of harvestable and  
76 merchantable volume from the southern Appalachian Mountains north into southern Canada

77 and west across the upper Midwestern states in North America (Fig. 1; Smith *et al.* 2009). Like  
78 other putative foundation tree species, *T. canadensis* can account locally for > 50% of the total  
79 basal area, and its ecological traits create unique terrestrial and aquatic habitats. For example,  
80 the deep shade cast by its dense evergreen foliage limits establishment of most understory  
81 species (Rogers 1980; D'Amato, Orwig & Foster 2009). Its refractory leaf litter and the cool  
82 temperatures at the soil surface beneath dark hemlock canopies result in low rates of  
83 decomposition and nutrient cycling, rapid accumulation of organic matter (Aber & Melillo 1991;  
84 Jenkins, Aber & Canham 1999), and nutrient-poor soils. The combination of nearly year-round  
85 low photosynthetic and evapotranspiration rates of *T. canadensis* (Hadley *et al.* 2008) stabilizes  
86 stream base-flows and decreases daily variation in stream temperatures (Ford & Vose 2007;  
87 Nuckolls *et al.* 2009). The microhabitat created by eastern hemlock supports unique  
88 assemblages of birds, arthropods, salamanders, and fish (Snyder *et al.* 2002; Tingley *et al.* 2002;  
89 Ellison *et al.* 2005b; Dilling *et al.* 2007; Mathewson 2009; Rohr, Mahan & Kim 2009; Mallis &  
90 Rieske, 2011; Sackett *et al.* 2011).

91         Despite its widespread distribution and high abundance, both locally and regionally, *T.*  
92 *canadensis* is rapidly disappearing across an increasing extent of its range. The hemlock woolly  
93 adelgid (*Adelges tsugae* Annand), an invasive insect from Japan that in North America feeds  
94 exclusively on eastern hemlock and its southeastern (USA) endemic congener, Carolina hemlock  
95 (*T. caroliniana* Engelmann), is moving rapidly both southward and northward (Fitzpatrick *et al.*  
96 2012), killing >90% of hemlocks it encounters (Orwig *et al.* 2002; Eschtruth *et al.* 2006; Knoepp  
97 *et al.* 2011). Hemlock has little resistance to the adelgid (Ingwell & Preisser 2011) and as yet has  
98 shown no recovery from chronic infestations (McClure 1995; Orwig *et al.* 2012). In the absence

99 of successful biological control programs (Onken & Reardon 2011) and economically or  
100 logistically feasible chemical control options (Ward *et al.* 2004; Cowles 2009), pre-emptive  
101 cutting or salvage logging of hemlock has been a common management response to declining  
102 and dead hemlock stands affected by the adelgid (Kizlinski *et al.* 2002; Orwig, Foster & Mausel  
103 2002; Ward *et al.* 2004; Foster & Orwig 2006).

104         The combination of adelgid-induced morbidity and mortality, and pre-emptive salvage  
105 logging of *T. canadensis* is radically changing the structure of eastern USA forests. Region-wide,  
106 forest productivity and carbon sequestration are expected to decline by as much as 8-12%, but  
107 establishment of mid-successional hardwoods (e.g., *Betula* and *Acer* species) is forecast to  
108 result in forest carbon uptake recovering to, or even exceeding pre-adelgid conditions only  
109 after 50 years or more (Albani *et al.* 2010; Knoepp *et al.* 2011). These model forecasts of the  
110 impact of the adelgid have been made at coarse-grained scales (2.5° grid), but local impacts  
111 may fall short of or dramatically exceed regional averages (P. C. Lemos & A. C. Finzi,  
112 unpublished data). Fifteen years of observational studies of marked plots have illustrated high  
113 variance in forest dynamics (e.g., Orwig, Foster & Mausel 2002; Orwig *et al.* 2008, 2012),  
114 portions of which may be attributable to differences in climate, short- versus long-term impacts  
115 of logging, and/or fine-scale effects of the adelgid itself (Stadler *et al.* 2005; Stadler, Müller &  
116 Orwig 2006).

117         Only experimental studies can distinguish reliably among differences due to *in situ*  
118 forest disintegration or logging, and so in 2003 we established a multi-hectare, long-term  
119 manipulative study – the Harvard Forest Hemlock Removal Experiment (HF-HeRE; Ellison *et al.*  
120 2010) – to study the various forest responses to the loss of hemlock. This ongoing experiment

121 compares and contrasts the rates, magnitudes, and trajectories of changes in hemlock-  
122 dominated stands to two mechanisms of foundation species loss: (1) death in place of eastern  
123 hemlock by girdling, which mimics tree disintegration that follows infestation by the hemlock  
124 woolly adelgid (Yorks, Leopold & Raynal 2003); or (2) loss and removal of hemlock following  
125 commercial logging (Brooks 2001). Patterns, processes, and dynamics studied include: forest  
126 vegetation structure, standing and downed dead wood, and three measures of ecosystem  
127 function: litterfall (a substantial component of net primary productivity; *e.g.*, Zheng, Prince &  
128 Hame 2004), soil carbon flux, and soil nitrogen dynamics.

129 In this paper, we report two years of pre-treatment data and the first five years of  
130 changes in vegetation structure and ecosystem functions following our experimental  
131 manipulations but prior to the infestation of our experimental plots by the adelgid. In  
132 particular, we examine and test three predictions that, relative to both hemlock and hardwood  
133 controls:

- 134 (1) Vegetation structure – species richness and cover of understory herbs, and density and  
135 cover of tree seedlings and saplings – increases slowly following girdling but more  
136 rapidly following hemlock removal and soil scarification from logging;
- 137 (2) Volume of standing dead wood and snags is highest in girdled plots, but downed coarse  
138 woody debris is higher in logged plots;
- 139 (3) Core ecosystem functions – litterfall and soil carbon fluxes decline while rates of soil  
140 nitrogen (as nitrate and ammonium) mineralization and soil nitrogen availability  
141 increase then decline slowly in girdled plots but rapidly in logged plots.



142 Other papers have described changes in the microenvironment (Lustenhouwer, Nicoll & Ellison  
143 2012), species composition of the seed bank and understory vegetation (Sullivan & Ellison 2006;  
144 Farnsworth, Barker Plotkin & Ellison 2012), diversity of ground-dwelling arthropods (Sackett *et*  
145 *al.* 2011), and nitrogen leaching (Templer & McCann 2010) in the first decade following the  
146 canopy manipulations in HF-HeRE. In total, our results lead us to hypothesize that vegetation  
147 structure and ecosystem functions in the girdled and logged plots will converge through time,  
148 and, at least on decadal scales, come to resemble the attributes of the hardwood control plots.

149 We note that we purposely sited HF-HeRE north of the northern limit (in 2003) of the  
150 hemlock woolly adelgid so that we could first identify different effects on forest structure and  
151 function caused by two different kinds of physical loss of *T. canadensis*. This experiment  
152 complements a suite of studies in which we have examined landscape-level spread of the  
153 adelgid (Orwig, Foster & Mauseel 2002; Fitzpatrick *et al.* 2012; Orwig *et al.* 2012), compositional  
154 and structural changes in forest vegetation (Foster & Orwig 1998), and ecosystem functions in  
155 forests infested by the adelgid (Cobb, Orwig & Currie 2006; Orwig *et al.* 2008) or that have been  
156 salvage logged (Kizlinski *et al.* 2002, D. A. Orwig *et al.* unpublished data). Subsequent data  
157 collected after the adelgid colonizes HF-HeRE (which occurred in 2010), will be used to further  
158 distinguish effects on eastern North American forests of physical disintegration of *T. canadensis*  
159 from additive, interactive, and/or nonlinear effects of the insect itself (*e.g.*, Stadler *et al.* 2005;  
160 Stadler, Müller & Orwig 2006). The unique experimental design – with measurements made  
161 pre-treatment; post-treatment but pre-adelgid; and post-treatment, post-adelgid –  
162 distinguishes HF-HeRE from other studies, both observational and experimental, that have

163 examined the effects of foundation species loss but that cannot separate effects of physical loss  
164 alone from those of the agent of loss itself.

165

## 166 **Materials and Methods**

### 167 ***Site Description***

168 HF-HeRE is located within the 121-ha Simes Tract (42.47° – 42.48° N, 72.22° – 72.21° W;  
169 elevation 215 – 300 m a.s.l.) at the Harvard Forest Long Term Ecological Research Site in  
170 Petersham, Massachusetts, USA (Ellison *et al.* 2010; Fig. 1). As in most New England forests, the  
171 Simes Tract as was cleared for agriculture in the early and mid-1800s. Many of the trees that  
172 had regenerated following agricultural abandonment in the mid- to late-1800s were blown  
173 down in the 1938 Great Hurricane, and analysis of tree-cores from the tract show that the trees  
174 in our experimental plots average 55 – 80 years old (Bettmann-Kerson 2007; A. M. Ellison, D. A.  
175 Orwig & A. A. Barker Plotkin unpublished data), The soils are predominantly coarse-loamy,  
176 mixed, active, mesic Typic Dystrudepts in the Charlton Series that are derived from glacial till  
177 (USDA n.d.). Across the eight HF-HeRE study plots, the soil pH ranges from 3.0 – 3.4 in the  
178 organic layer and from 3.5 – 4.0 in the mineral layer, and the soil C:N ratios range from 26 – 33.  
179 Much of the central portion of the tract is poorly drained or swampy; elevated areas are better  
180 drained. *Tsuga canadensis* and *Acer rubrum* L. (red maple) dominate the poorly drained soils,  
181 whereas *T. canadensis*, along with *Quercus rubra* L. and *Q. alba* L. (red and white oaks), and  
182 *Pinus strobus* L. (white pine) predominate on hills and slopes. *Betula lenta* L. (black birch), *Acer*  
183 *saccharum* Marsh. (sugar maple), and other hardwoods grow at low frequency and density  
184 throughout the tract (Ellison *et al.* 2010).

185

186 ***Experimental design and treatments***

187 The complete design of HF-HeRE is described by Ellison *et al.* (2010); only salient details are  
188 repeated here. The eight 90 × 90 m (0.81 ha) plots comprising this experiment are grouped in  
189 two blocks (Fig. 1), each consisting of three plots initially dominated by *T. canadensis* and one  
190 plot of mixed hardwoods (Table 1). The “valley” block (plots 1–3 and 8) is in undulating terrain  
191 bordered on its northern edge by a *Sphagnum*-dominated wetland (permission to work in this  
192 wetland and in the adjacent bordering vegetation [“buffer zone”] was provided by the  
193 Petersham, Massachusetts, Conservation Commission). The “ridge” block (plots 4–7) is on a  
194 forested ridge. Plots were identified in 2003 and sampled for two growing seasons  
195 (spring/summer in each of 2003 and 2004) prior to applying canopy manipulation treatments –  
196 girdling, or harvesting of standing *T. canadensis* along with cutting of merchantable hardwoods  
197 and *P. strobus* – to one plot in each block.

198 In the girdled treatment plots, the bark and cambium of all individual *T. canadensis*  
199 trees, saplings, and seedlings were cut through using chain saws or hand knives over a 2-day  
200 period in May 2005. Girdled trees died over a 2-year period but were left standing in place to  
201 simulate the physical decline and mortality of hemlock resulting from infestation by the  
202 hemlock woolly adelgid (Ellison *et al.* 2010). No other species were girdled and there was no  
203 site disturbance other than walking between trees.

204 In the logged treatment plots, all *T. canadensis* trees > 20 cm diameter at breast height  
205 (DBH, measured 1.3 m above ground) and 50% of the commercially valuable *Q. rubra* and *P.*  
206 *strobus* were felled using a chainsaw and removed using a skidder between February and April

207 2005, when the ground was frozen. Because this logging operation mimicked the effects of an  
208 intensive commercial hemlock salvage operation, trees of small size, poor quality, or little  
209 economic value, such as *A. rubrum* and *B. lenta* were also removed to facilitate log removal or  
210 to improve future stand quality, but some good-quality *Q. rubra* and *P. strobus* were retained.  
211 We recognize that the removal of tree species other than *T. canadensis* can have some impacts  
212 on changes forest dynamics in the otherwise hemlock-dominated stands. However, in the  
213 logged plots, *T. canadensis* accounted initially for > 50% of the basal area, but made up > 80%  
214 of both the number of felled trees and their basal area (Ellison et al. 2010). Thus, the effects of  
215 hemlock loss were likely to dominate observed responses of the forest to this canopy  
216 manipulation.

217 Two control plots in each block were not manipulated. In each block, one of each of  
218 these control plots was dominated by hemlock, the other by mid-successional hardwoods of  
219 the same general age of the remaining forest (55-80 years). The latter control plots represents  
220 the most likely future forest conditions after hemlock has disappeared from the landscape  
221 (Orwig & Foster 1998; Ellison *et al.* 2010).

222

## 223 **Measurements**

### 224 *Vegetation structure*

225 We measured species richness and cover of understory herbs, and density and cover of tree  
226 seedlings and saplings to determine how these attributes of vegetation structure varied among  
227 the two canopy manipulation treatments and the two different controls (Prediction 1). In 2003  
228 (prior to canopy manipulations), we established two transects running through the central 30m

229 × 30m of each plot to quantify understory richness, cover, and density. Five 1-m<sup>2</sup> subplots were  
230 spaced evenly along each transect and have been sampled annually since 2003. In each subplot,  
231 tree seedlings (<1.3m tall) were counted and percent cover of tree seedlings, herbs, shrubs,  
232 ferns and grasses was estimated to the nearest one percent. Grasses and sedges were  
233 identified only to genus as most lacked flowers or fruits necessary for accurate species-level  
234 identification. A species list has been compiled annually for the central 30 × 30-m core area of  
235 each plot. Nomenclature follows Haines (2011). The number of sapling-sized trees (>1.3m tall  
236 but <5cm DBH) was tallied by species in the 30 × 30-m core area of each plot in 2005, 2007 and  
237 2009.

238 In 2003-2004, all trees ≥5 cm DBH in each plot were tagged with aluminum tags,  
239 identified, measured (DBH) and mapped (x, y, z coordinates relative to a plot corner) using a  
240 compass, auto-level, and stadia rods. Initial basal area was higher in the hemlock plots (45.6 –  
241 53 m<sup>2</sup> · ha<sup>-1</sup>) than in the hardwood control plots (29.7 – 35.6 m<sup>2</sup> · ha<sup>-1</sup>) and basal area was  
242 slightly higher in the ridge block than in the valley block (species composition data reported in  
243 Table 1 of Ellison *et al.* 2010). Initial stem density ranged from 678 stems ha<sup>-1</sup> in the ridge  
244 hemlock control plot to 1354 stems ha<sup>-1</sup> in the valley girdled plot. *Tsuga canadensis* comprised  
245 50 – 69% of initial basal area and 55 – 70% of initial stem density in the six plots initially  
246 dominated by this species (hemlock control, logged, and girdled plots). In the hardwood control  
247 plots, *T. canadensis* comprised <10% of the initial basal area and 10-11% of the initial stem  
248 density. Other species that comprised >10% initial basal area in any plot included *A. rubrum*,  
249 and *A. saccharum* (hardwood valley plot only), *B. lenta*, *Q. rubra*, and *P. strobus*. Decline and  
250 death of trees in the girdled plots was tracked following treatments; most *T. canadensis* had

251 died within 24 months (Ellison *et al.* 2010). In 2009, each tree was assessed for survival and  
252 diameter growth (for living stems).

253

#### 254 *Standing and downed dead wood*

255 Prediction 2 addresses changes in volume of coarse woody debris (CWD) – standing dead trees  
256 (snags), stumps, and volume of fallen boles and branches >7.5cm in diameter – as a function of  
257 canopy manipulation treatment. These variables have been surveyed biennially since 2005  
258 (post-treatment only). In summer 2005, just after the girdling and logging were completed,  
259 eight transects were established in each plot beginning from each cardinal and ordinal plot  
260 corner/edge and extending 35-50 m towards the plot center. To measure standing dead wood,  
261 snags and stumps were sampled along a 4-m wide strip plot that straddles the line transect.  
262 Species (or species group) were recorded for each individual stump or snag; its lower diameter  
263 was measured, and its top diameter and height either were measured directly or estimated if  
264 the snag height exceeded the length of a stadia rod. From these measurements, snag volume  
265 was calculated as the frustum of a cone (Harmon & Sexton 1996). Volume of downed wood was  
266 estimated using the line-intercept method (Van Wagner 1968). The diameter, decay class (Rice  
267 *et al.* 2004), and species (or species group) of each piece that intersected the line was recorded.  
268

#### 269 *Ecosystem function*

270 Prediction 3 is that primary productivity, soil carbon flux, and soil nutrient cycling and  
271 availability should decline slowly in the girdled plots and rapidly in the logged plots. We used  
272 litterfall as an index of annual aboveground productivity (e.g., Zheng, Prince & Hame 2004). Five

273 litterfall baskets (collection area 0.11 m<sup>2</sup>) were placed at random coordinates throughout each  
274 90 × 90-m plot. Baskets were placed in the field at the beginning of September 2005 (after  
275 canopy manipulations had been applied). Samples were collected quarterly: in early April, mid-  
276 June, mid-September, and early December every year. Leaf litter was sorted to major species  
277 groups (*Tsuga*, *Pinus*, *Quercus*, *Betula*, *Acer*, other deciduous trees), whereas twigs, bark, and  
278 reproductive parts were pooled into one category. After sorting, samples were oven-dried at 70  
279 °C for 48 hours prior to weighing. Annual litterfall is reported as the total of the June,  
280 September and December collections, plus the subsequent year's April collection.

281         Measurements of soil carbon (C) flux ("soil respiration") were made using a vented,  
282 flow-through, non-steady-state system (Livingston & Hutchinson 1995) at six randomly chosen  
283 locations in the 30 × 30-m core area of each of the six hemlock (control, girdled, logged) plots  
284 (2003 – 2009) and at two randomly chosen locations in the two hardwood control plots (2006 –  
285 2007). At each location, soil respiration collars, each 25 cm in diameter (0.05 m<sup>2</sup> surface area)  
286 and made from thin-walled polyvinylchloride (PVC) tubing cut into 10 cm lengths, were inserted  
287 ≈5 cm into the ground. Soil respiration was measured manually every 2 weeks during the  
288 growing season between 09:00 and 15:00 hours using a Li-Cor 6252 portable Infrared Gas  
289 Analyzer (IRGA) (Li-Cor Inc., Lincoln, Nebraska, USA) mounted on a backpack frame. The IRGA  
290 was connected to a vented white acrylonitrile-butadiene-styrene (ABS) chamber top (10 cm in  
291 height) that was then placed over the soil respiration collar. A pump circulated the air at 0.5 L ·  
292 min<sup>-1</sup> from the chamber top through the IRGA and back to the chamber top. The chamber top  
293 was left on the collar for 5 min, and the change in CO<sub>2</sub> concentration within the chamber was  
294 recorded using a Hewlett-Packard HP 200LX palmtop computer (Hewlett-Packard, Palo Alto,

295 California, USA). The calibration of the IRGA was checked each day that measurements were  
296 made using both zero  $\text{mL} \cdot \text{L}^{-1} \text{CO}_2$  and  $594 \text{ mL} \cdot \text{L}^{-1} \text{CO}_2$  certified standards. A linear regression of  
297 concentration of  $\text{CO}_2$  versus time was used to determine the soil respiration rate, which was  
298 then corrected for local atmospheric pressure and chamber air temperature. The response  
299 variable used in subsequent analyses of treatment effects was soil respiration for the entire  
300 sampling period (Day of Year [DOY] 191- 273) each year; this value was estimated by linearly  
301 interpolating soil respiration measurements between sampling days for each collar and then  
302 summing (integrating) all values over the 82-day sampling period.

303 Total soil respiration is the sum of two belowground components: heterotrophic  
304 (microbial and microfaunal respiration) and autotrophic (root respiration). Measurements of  
305 soil respiration in the control plots represent the sum of these belowground processes. Thus, to  
306 a first approximation, differences in soil respiration between control and either logged or  
307 girdled treatments reflect the contribution of eastern hemlock to autotrophic respiration.  
308 Decreased soil respiration due to treatment effects were calculated by taking the pre-treatment  
309 soil respiration over the sampling season and subtracting from it the post-treatment seasonal  
310 soil respiration. These decreases represent a conservative estimate of autotrophic soil  
311 respiration in treated plots. Potential limitations to this method include the loss of root  
312 biomass, which could reduce heterotrophic respiration of soil organic matter via lack of  
313 priming, and that the newly severed roots may temporarily increase carbon available for  
314 heterotrophic respiration.

315 Because the majority of live tree roots in each plot were killed following logging or  
316 girdling of hemlock, and because the percent cover of other vegetation in these treatments at



317 the beginning of this study was very low (< 2%), seasonal sums of soil respiration in these  
318 canopy manipulation treatments can be used as estimates of heterotrophic soil respiration  
319 (Hanson *et al.* 2000; Levy-Varon, Schuster & Griffin 2012).

320 Nitrogen (N) mineralization measurements were begun in August 2003, two growing  
321 seasons prior to canopy manipulations, using a modified core method (Hart *et al.* 1994;  
322 Robertson *et al.* 1999). In the central 30 × 30-m area of each canopy manipulation plot, closed-  
323 topped cores were installed within four, 5 × 5-m, randomly located subplots each year at 7-  
324 week intervals during the growing season (May – October), and for a 23-week overwinter  
325 (October/November – April) incubation. At the beginning of each sampling period, soil was  
326 extracted with sharpened PVC cores (25-cm long) and immediately separated into mineral and  
327 organic layers. A second core was incubated in the field for 42 – 50 days and then removed and  
328 separated by horizon. The bottom 2 cm of each core was removed to prevent root invasion  
329 from below in incubated cores, and to standardize sample volume among the cores.

330 Soil samples were returned to the laboratory on ice and processed the next day. Organic  
331 and mineral soils were passed through a 5.0-mm mesh screen, weighed for total mass, and  
332 subsampled for gravimetric moisture and inorganic N. To determine soil NH<sub>4</sub>-N and NO<sub>3</sub>-N  
333 concentration, ~10 g of organic and mineral soil were placed into 100 ml of 1M KCl for 48 hr  
334 (Aber *et al.* 1993). Soil extracts were filtered through a coarse pore filter (0.45 – 0.6 μm) and  
335 inorganic N concentrations were determined colorimetrically with a Lachat 8500 flow-injection  
336 autoanalyzer (Lachat Instruments, Inc., Milwaukee, Wisconsin, USA), using the salicylate (Lachat  
337 Instruments, Inc., 1990a) and cadmium reduction methods (Lachat Instruments, Inc., 1990b) for  
338 NH<sub>4</sub>-N and NO<sub>3</sub>-N, respectively. Net N mineralization was calculated as the difference in

339 concentration of inorganic N ( $\text{NH}_4\text{-N} + \text{NO}_3\text{-N}$ ) in incubated cores minus that in initial samples.

340 An additional assessment of forest floor N availability and mobility was determined at

341 each soil subplot using mixed-bed cation + anion resin bags (Binkley & Matson 1983).

342 Approximately 10 grams of resin was placed in nylon mesh bags and pretreated with 2M KCl

343 before deployment for 6-month intervals (growing season and overwinter). Resins were

344 deployed at the forest floor – mineral soil interface within 5 cm of where the N mineralization

345 incubations were located. Resins were returned to the laboratory on ice, dried at 105 °C for 24

346 h, and extracted in 2M KCl. Inorganic N was determined by the methods described above for

347 soil N extracts.

348

#### 349 ***Statistical analysis and data availability***

350 The experimental design is a one-way blocked analysis of covariance (ANCOVA) (Ellison *et al.*

351 2010; Gotelli & Ellison 2012), and analyses reported here were executed using the lme function

352 in the nlme package in R version 2.9.2 (R Development Core Team 2009; Pinheiro *et al.* 2012).

353 In this design, the four canopy manipulations (hemlock control, hemlock girdled, logged,

354 hardwood control) were treated as “fixed” factors, the two blocks were treated as “random”

355 factors, and time entered the model as a covariate. Measures of vegetation structure and

356 ecosystem function parameters were log-transformed as needed to normalize data and

357 equalize variances; data are plotted back-transformed (Gotelli & Ellison 2012). Comparisons

358 among treatments were done using *a priori* contrasts. Although two blocks is the minimum

359 required to allow for estimates of variance within treatments, this small number of blocks

360 provided relatively low statistical power to detect true differences among treatments (i.e., the

361 probability of a Type II error – falsely accepting the null hypothesis – is high). Further, the  
362 absence of replication of treatments within blocks precluded estimation of a block × treatment  
363 interaction. Such trade-offs are inevitable in hectare-scale, decades-long experiments, however.

364 All data presented in this paper are publicly available through the Harvard Forest Data  
365 Archive (<http://harvardforest.fas.harvard.edu/data-archive>), in a suite of datasets: HF106  
366 (understory vegetation), HF126 (overstory vegetation), HF161 (litterfall), HF125 (coarse woody  
367 debris), HF119 and HF130 (soil respiration), and HF179 (nitrogen pools and dynamics).

368

## 369 **Results**

### 370 ***Changes in vegetation structure***

#### 371 *Overstory trees*

372 Following treatments, the girdled and logged treatments lost 67 – 72% of overstory basal area  
373 and 61 – 71% of overstory stem density (Table 1). Only *T. canadensis* was affected in the girdled  
374 treatment, but girdled individuals ranged from seedlings to canopy trees and they died within 2  
375 years (data in Fig. 4 of Ellison *et al.* 2010). In contrast, basal area was immediately lost in the  
376 logged treatment and included large-diameter *T. canadensis*, some large *Q. rubra* and *P.*  
377 *strobus*, and many smaller *A. rubrum* and *B. lenta* (Table 1). By 2009, four years after  
378 manipulations, growth of trees in the hemlock and hardwood control treatments resulted in  
379 per-plot gains in basal area of 4% – 6%; concomitant background mortality led to a per-plot loss  
380 of 6 – 12% of stems.

381

382 *Understory vegetation*

383 Understory species richness remained relatively constant in both hemlock control and  
384 hardwood treatments over the course of the study, with hardwood treatment plots having the  
385 highest herb and shrub richness (Fig. 2a, Table 2). Girdled treatment plots had < 10 understory  
386 species prior to treatment. Species richness in this treatment increased gradually, resulting in a  
387 doubling by 2009 (Fig. 2a, Table 2). Two nonnative species were first identified in the girdled  
388 treatment at low abundance by 2007: *Berberis thunbergii* DC. (Japanese barberry) in the valley  
389 girdled plot and *Celastrus orbiculatus* Thunb. (oriental bittersweet) in the ridge girdled plot. The  
390 plots in the logged treatment similarly began with low species richness. In contrast to the  
391 girdled treatment, understory species richness increased following logging, but then remained  
392 approximately constant for the remainder of the study period (Fig. 2a, Table 2). No nonnative  
393 species had recruited into the logged treatment plots by 2009.

394 Understory vegetation cover remained between 1 and 2% in the hemlock control and  
395 from 16 to 32% in the hardwood control treatment throughout the sampling period (Fig. 2b,  
396 Table 2). Percent cover of understory vegetation increased slowly in the girdled treatment and  
397 exceeded cover in the hemlock control treatment by 2009. Understory cover increased more  
398 rapidly in the logged treatment, especially after 2007 (Fig. 2b), significantly exceeding cover in  
399 both the hemlock control and the girdled treatments, and equaling levels seen in the hardwood  
400 control by 2009 (Fig. 2b). The main species driving the increase in understory cover were early  
401 successional opportunists and species with long-lived seed banks, including *Aralia hispida* Vent.  
402 (bristly sarsaparilla), *Erechtites hieracifolia* (L.) Raf. ex DC. (pilewort), *Rubus* spp. (raspberries and

403 blackberries), and to a lesser extent, *Lysimachia quadrifolia* L. (whorled loosestrife) and  
404 *Dennstaedtia punctilobula* Michx. (T. Moore) (hay-scented fern).

405

#### 406 *Tree regeneration*

407 Tree seedling density was low in the hemlock control and logged treatments both before and  
408 after canopy manipulations (Fig. 2c); it was nearly 10-fold higher in the hardwood control and  
409 this significant difference (Table 2) persisted from 2003 – 2009. Tree seedlings, especially of *B.*  
410 *lenta* and *A. rubrum* increased significantly – to  $3.5 \times 10^5 \cdot \text{ha}^{-1}$  – in the girdled treatment  
411 through time. Cover of tree seedlings was consistently lowest in hemlock control (< 1% cover)  
412 and hardwood control ( $\approx$ 5% cover) treatments, but increased slowly and significantly in both  
413 girdled (to > 40% cover) and logged (to 15% cover) treatments (Fig. 2d; Table 2).

414 Prior to the manipulations, there were few saplings in any of the plots, and despite  
415 some growth, we observed neither significant changes in sapling density through time nor  
416 differences in sapling density among treatments (Fig. 2e). The few saplings in the hemlock  
417 control treatment were eastern hemlock. Likewise, sapling density was low in the hardwood  
418 control treatment throughout the study period; *A. rubrum* and *A. saccharum* were the most  
419 common sapling species in the valley hardwood plot, whereas *A. rubrum* and *P. strobus* were  
420 more common in the ridge hardwood plot. The girdling treatment removed all *T. canadensis*  
421 saplings, and even by 2009, most tree regeneration in the girdled plots was still in the seedling  
422 (< 1.3-m tall) size class and no stems had grown into the sapling size class until 2009. Most  
423 saplings in the logged treatment were killed during logging, but stump sprouts of *A. rubrum*  
424 were abundant by 2007 and a few *B. lenta* had grown from seedlings into saplings on the ridge.

425 By 2009, dense stands (3000 – 6000 saplings ha<sup>-1</sup>) of *B. lenta* saplings covered the logged  
426 treatment plots.

427

### 428 ***Standing and downed dead wood***

429 Volume of stumps and snags was very low in the hemlock and hardwood controls and in the  
430 logged treatment plots (Fig. 2f). Volume of stumps and snags in the girdled treatment was  
431 similar to both controls in 2003 but then rose significantly (Table 2), by two orders of  
432 magnitude, as the girdled trees died (Fig. 2f). Volume of downed CWD in the logged treatment  
433 was 2 – 3× greater than in any other treatment (Fig. 2g, Table 2). This trend persisted through  
434 the five post-treatment years, although CWD volume declined from 2005 – 2009 as the wood  
435 decayed.

436

### 437 ***Ecosystem function***

#### 438 *Litterfall*

439 Litterfall in the hemlock and hardwood controls were not significantly different from one  
440 another and remained relatively constant ( $3 - 4 \times 10^3$  kg ha<sup>-1</sup>) over the course of the study (Fig.  
441 3a, Table 3). Total litterfall and hemlock litterfall amounts were significantly affected by  
442 hemlock removal (Table 3), and the patterns of change in canopy structure were reflected  
443 immediately in litterfall (Fig. 3a, 3b). A strong pulse of litter occurred in the girdled treatment in  
444 Spring – Summer 2006, one year after *T. canadensis* were girdled (Fig. 3a). Hemlock litter  
445 comprised >80% of the total litterfall collected in the girdled treatment during April –  
446 September 2006 (Fig. 3b). Subsequently, total litterfall in this treatment increased to about the

447 same amount as in the hemlock and hardwood controls by 2009, but was composed mainly of  
448 *Betula*, *Quercus* and *Pinus* litter (data not shown). Litterfall in the logged plots was significantly  
449 reduced by logging, and slowly increased during the four years after logging to nearly 50% of  
450 that observed in the controls (Fig. 3a).

451

#### 452 *Soil respiration*

453 Average seasonal soil respiration dynamics showed some changes as a function of hemlock  
454 canopy removal (Fig. 3c), but within-plot variation exceeded among-treatment variation in soil  
455 respiration (Fig. 3c; Table 3). By differencing, hemlock roots accounted for approximately 35%  
456 of the total soil respiration in intact hemlock stands.

457

#### 458 *Nitrogen dynamics*

459 Hemlock removal led to transient increases in ammonium ( $\text{NH}_4^+$ ) and nitrate ( $\text{NO}_3^-$ ) availability  
460 in soils (peaks in Fig. 3d, 3e). As with measures of soil respiration, within-treatment  
461 heterogeneity exceeded among-treatment variation in  $\text{NO}_3^-$  availability, and neither treatment  
462 significantly altered soil  $\text{NO}_3^-$  availability (Table 3). Nitrate mobility remained low following  
463 cutting or girdling, except for a 2-year pulse beginning in 2008 in the girdled plot on the ridge  
464 and beginning in 2007 in the logged plot on the ridge (Fig. 3e).

465         Across all treatments, net nitrogen mineralization declined significantly through time  
466 (Table 3), but within-treatment variation exceeded among-treatment variation throughout the  
467 study (Fig 3f). We observed a small ( $\approx 5\%$ ), sustained increase in net nitrogen mineralization in

468 the girdled treatment from 2007 to 2009, and a similarly small, albeit transient, increase in net  
469 nitrogen mineralization immediately following logging (Fig. 3f).

470

## 471 **Discussion**

472 Losses of individual species can have cascading effects on system-wide biological diversity and  
473 ecosystem function, but whether *specific* species have different effects on ecosystem structure  
474 function remains an open question that has been addressed much more in theory than in  
475 practice (Bunker *et al.* 2005, Suding *et al.* 2008, Wardle *et al.* 2011). It is important to  
476 distinguish between effects of loss of dominant (in terms of basal area or biomass) or abundant  
477 species and effects of loss of foundation species. For example, American beech is declining  
478 rapidly due to beech-bark disease (Houston 1975; Lovett *et al.* 2006), but because beech  
479 resprouts readily, one consequence of beech-bark disease has been to change the size  
480 structure of these forests. Large beech trees are now uncommon, but the number of saplings  
481 (sprouts) and even the amount of beech's basal area in a stand may be much greater than  
482 before the occurrence and spread of the disease (Houston 1975). Similarly, American elm, once  
483 a co-dominant in many eastern North American forests, continued to recruit from small trees,  
484 which can reproduce before they are killed by Dutch elm disease (Barnes 1976). Understory  
485 composition changes rarely in beech stands infested by beech-bark disease (Twery and  
486 Patterson 1984), and several authors have failed to find expected changes in invertebrate or  
487 mammal abundance associated with widespread decline in beech nuts formerly produced by  
488 large trees (Faison and Houston 2004, Garneau *et al.* 2012). Effects of beech decline on energy



489 and nutrient cycling varies with co-occurring hardwoods, rates of resprouting, and intensity of  
490 infestation (Lovett *et al.* 2006).

491 In contrast, eastern hemlock has distinctive assemblages of understory plants and  
492 animals (Snyder *et al.* 2002; Tingley *et al.* 2002; Ellison *et al.* 2005b; Dilling *et al.* 2007;  
493 Mathewson 2009; Rohr, Mahan & Kim 2009; Mallis & Rieske, 2011; Sackett *et al.* 2011), and  
494 affects carbon cycling and hydrological processes differently from both co-occurring hardwoods  
495 and co-occurring conifers (Ford & Vose 2007, Hadley *et al.* 2008, Brantley, Ford & Vose *in*  
496 *press*). Hemlock, unlike hardwoods, does not resprout, and the hemlock woolly adelgid feeds  
497 on all ages and size-classes of hemlock. Thus, there is neither opportunity for rapid  
498 regeneration through resprouting nor is there an opportunity for hemlock seedlings to reach  
499 maturity and fruit before they are killed by the adelgid. Eastern hemlock, therefore, is a better  
500 candidate for a foundation tree species than many other forest dominants. Its decline and  
501 death have been hypothesized to lead to both short- and long-term changes in ecological  
502 dynamics and ecosystem processes (Ellison *et al.* 2005a; Lovett *et al.* 2006).

503 The Harvard Forest Hemlock Removal Experiment (HF-HeRE) examines this hypothesis  
504 by quantifying these changes and testing explicit predictions about how the magnitude and rate  
505 of these changes are functions of the mechanism by which a foundation species is lost. In  
506 general terms, we predicted that rates of change in biological diversity and ecosystem function  
507 would parallel the rate of foundation species loss: slowly when hemlock was girdled (to mimic  
508 decline due to infestation by the hemlock woolly adelgid; Yorks, Leopold & Raynal 2003) but  
509 more rapidly when hemlock was cut and removed (to simulate a commercial logging operation;  
510 Brooks 2001). We hypothesize that despite differences in initial rates, changes in vegetation

511 structure and ecosystem function caused by different mechanisms of hemlock loss will  
512 converge and come to resemble those seen in the young hardwood stands that represent a  
513 plausible scenario of our forests in the future, after hemlock has disappeared from the  
514 landscape (Orwig & Foster 1998). Our results provide strong support for this hypotheses with  
515 respect to most measures of vegetation structure, but for fewer measures of ecosystem  
516 function.

517

### 518 ***Changes in vegetation structure***

519 Decline and loss of *T. canadensis* in the logged and girdled plots at HF-HeRE led to changes in  
520 overstory densities and basal area (Table 1) that were similar to those seen in sites long  
521 infested by the adelgid (Orwig & Foster 1998; Orwig, Foster & Mausel 2002) or that have been  
522 salvage logged (Brooks 2001; Kizlinski *et al.* 2002). Light availability near ground-level increased  
523 gradually over time following girdling but abruptly after logging, followed by a decline with  
524 regrowth in the logged treatment (Lustenhouwer, Nicoll & Ellison 2012). Average daily soil and  
525 air temperatures in logged and girdled plots were 2 – 4 °C warmer in summer and cooler in  
526 winter relative to the hemlock or hardwood controls, and both diurnal and seasonal variances  
527 in temperatures were highest in the logged treatment (Lustenhouwer, Nicoll & Ellison 2012).  
528 Such changes in light and temperature can strongly impact both vegetation community  
529 composition (D’Amato, Orwig & Foster 2009; Farnsworth, Barker Plotkin & Ellison 2012) and  
530 associated ecosystem properties including decomposition (Berg & McLaugherty 2009), soil  
531 respiration (Savage & Davidson 2001), and nutrient cycling (Kizlinski *et al.* 2002).

532 Removal of *T. canadensis* by girdling or logging resulted in a 2- to 3-fold increase in  
533 species richness after either treatment. Consistent with our first prediction, understory cover in  
534 the girdled treatment plots increased slowly (Fig. 2a, 2b) because overstory trees died slowly  
535 and the majority of snags were still standing and providing partial shade 4 – 5 years after the  
536 canopy manipulation treatment had been applied. We anticipate that understory vegetation in  
537 this treatment will continue to increase in cover and species richness. In contrast, understory  
538 vegetation cover in the logged treatment plots increased rapidly and matched total cover in the  
539 hardwood control plots by 2009 (Fig. 2a, 2b). Shade intolerant species including *Rubus* spp.,  
540 *Aralia hispida*, and *Carex* spp. initially were absent in all six *T. canadensis*-dominated plots, but  
541 established from both the seed bank and the seed rain in soils scarified by logging (Farnsworth,  
542 Barker Plotkin & Ellison 2012) and grew quickly in these scarified areas. Similar increases in  
543 total richness and cover have been observed following girdling (Yorks *et al.* 2003; Ford *et al.*  
544 2012) or salvage logging (Kizlinski *et al.* 2002; D. Orwig unpublished data) of *T. canadensis*  
545 elsewhere. However, the heavy recruitment of birch (*Betula* spp.) into the sapling layer within  
546 four years of girdling has not been observed in other girdling studies (Yorks, Leopold & Raynal  
547 2003; Ford *et al.* 2012), perhaps due to lower deer browsing and lack of Rhododendron  
548 (*Rhododendron maximum* L.) cover that limit rapid recruitment south of our study areas. These  
549 results overall highlight the fact that healthy hemlock act as an ecological filter, limiting  
550 seedling and understory plant establishment (Rogers 1980; D'Amato, Orwig & Foster 2009;  
551 Orwig *et al.* 2012). Now that the adelgid has colonized the hemlock control plots, however, they  
552 are also poised for change, and will provide important comparisons with responses observed  
553 following girdling.

554

555 ***Changes in standing and downed dead wood***

556 Changes in coarse woody debris volume (Fig. 2f, 2g) were consistent with our second  
557 prediction. By the end of 2009, most dead trees were still standing in the girdled treatment  
558 plots. Once they fall, however, volume of fallen wood will more than double the levels currently  
559 found in the logged plots. Ironically, although the hemlock canopy is lost, this large input of  
560 CWD onto the soil surface will bring the dead wood structure of this treatment closer to that  
561 seen in old-growth *T. canadensis* stand structure (D'Amato, Orwig & Foster 2008) than to the  
562 volume of standing dead wood or CWD in young hardwood stands. These fallen boles likely will  
563 provide safe sites for seedling establishment and cover for amphibians (Mathewson 2009) and,  
564 as they decompose, also will slowly release nutrients into the soil.

565

566 ***Changes in ecosystem functions***

567 Our third prediction was supported most clearly for changes in litterfall, an index of  
568 aboveground primary productivity (Zheng, Prince & Hame 2004). In the girdled treatment plots,  
569 there was a sharp pulse in litterfall followed by a gradual decline (Fig. 3a, 3b; see also Yorks,  
570 Leopold & Raynal 2003; Nuckolls *et al.* 2009). This is a transient loss of standing biomass, which  
571 then recovered to pretreatment levels as vegetation colonized or regrew in the experimental  
572 plots. Total litterfall following girdling recovered within four years to levels observed in both  
573 hemlock and hardwood controls as *Pinus strobus*, *Quercus* spp. and *Betula* spp. growth  
574 increased. Very similar patterns and total amounts of litterfall were observed four years after  
575 girdling hemlock in southern Appalachian forests (Knoepp *et al.* 2011). In the logged treatment

576 plots, litterfall immediately decreased following logging then slowly increased. By 2009,  
577 however, the amount of litterfall in the logged plots treatment was still lower than in the  
578 girdled treatment or either of the two controls (Fig. 3a, 3b).

579         Contrary to our third prediction, variation in soil respiration, nitrogen availability, and  
580 nitrogen cycling generally was higher within treatments and years than among treatments or  
581 years, and any responses to treatments were modest and transient. Any initial differences  
582 among treatments rapidly recovered to pre-treatment levels (Fig. 3c-f). Our approximate  
583 autotrophic respiration rate estimates of 36 – 46% are similar to the 48% measured by  
584 Gaudinski et al. (2000) at the Harvard Forest using isotopic analysis of respired <sup>14</sup>C. We  
585 measured 43% autotrophic respiration using the same isotopic analysis methodology as  
586 Gaudinski et al. (2000) within the Simes girdled treatment plots (K. Savage & E. Davidson  
587 unpublished data). Similar ranges attributed to autotrophs have been estimated in other  
588 studies (Hansen *et al.* 2000; Levy-Varon, Schuster & Griffin 2012).

589         Despite the dramatic changes caused by girdling and logging in microenvironmental  
590 conditions (Lustenhouwer, Nicoll & Ellison 2012), vegetation structure (Fig. 2; Table 2), and  
591 productivity (Fig. 3a, 3b; Table 3) and the transient shifts in carbon dynamics (Fig. 3c; Table 3),  
592 our experimental treatments resulted in only modest, short-term changes in nitrogen cycling  
593 (Fig. 3d-3f; Table 3). Ammonium availability in the girdled treatment plots did not increase until  
594 two years after girdling and peaked one year later, a result expected because *T. canadensis*  
595 trees did not die or drop their needles immediately. The short-lived duration of nutrient  
596 capture on resins is likely related to the rapid regrowth of vegetation in the logging treatment  
597 (see also Templer & McCann 2010). Short-lived increases in ammonium and nitrate availability

598 also have been observed in other logging and girdling studies (Kizlinski *et al.* 2002; Yorks,  
599 Leopold & Raynal 2003; Nave *et al.* 2011), and in adelgid-infested forests (Jenkins, Aber &  
600 Canham 1999; Orwig *et al.* 2008). Net nitrogen mineralization was not significantly affected by  
601 logging or girdling, a result also seen other hemlock studies in girdled (Knoepp *et al.* 2011) and  
602 logged stands (Kizlinski *et al.* 2002), and consistent with findings following a substantial physical  
603 disturbance (simulated hurricane; Bowden *et al.* 1993). However, we also found no substantive  
604 differences in nitrogen mineralization between hemlock and hardwood control plots. The lack  
605 of major differences in soil pH or forest floor C:N is consistent with these findings, which are  
606 also supported by recent meta-analyses (Mueller *et al.* 2012).

607         We caution, however, that it may take much longer than a decade or two for changes in  
608 soil dynamics resulting from the loss of hemlock to be manifest (D. J. Lodge *personal*  
609 *communication* 24 September 2004). One of the dominant drivers of soil dynamics –  
610 decomposition of large fallen boles and other coarse woody debris – is very different in  
611 hemlock (and other conifer-dominated) stands than in hardwood dominated stands. In the  
612 former, brown-rot fungi dominate, and they primarily decompose cellulose. In the latter, white-  
613 rot fungi dominate, and they primarily decompose lignin; in general, white-rot fungi are much  
614 more efficient (and rapid) decomposers (Hatakka 2001; Floudas *et al.* 2012). We predict that  
615 soil nutrient availability will decline significantly only once dead hemlock boles and smaller  
616 coarse hemlock woody debris have decomposed and brown-rot fungi disappear, but this may  
617 take one or two centuries.

618

619 **Conclusions**

620 Loss of the foundation tree species, *T. canadensis*, by either girdling or logging, leads to short-  
621 and long-term changes in vegetation structure and ecosystem function. Rapid removal by  
622 logging leads to abrupt, rapid changes, whereas girdling (and by inference, the adelgid itself)  
623 causes slower but no less important responses of similar magnitude several years later.  
624 Vegetation richness, cover, and density increase continuously following hemlock removal and  
625 exert strong, potentially stabilizing, biotic control on the fluxes of nutrients. Thus, these  
626 ecosystem processes exhibited short-term fluctuations following *T. canadensis* removal but  
627 recovered to near pre-treatment levels within four years, highlighting the resilience – at least in  
628 the short-term – of some forest ecosystem processes to disturbances (Bowden *et al.* 1993;  
629 Foster *et al.* 1997). Results from HF-HeRE, together with results from observations and  
630 experiments on other foundation species suggest that their continued losses, together with  
631 human responses to ongoing environmental changes, may have profound impacts on the  
632 structure and function of forested ecosystems for decades to come.

633 **Acknowledgements**

634 This research was supported by the U.S. National Science Foundation through its programs in  
635 Long Term Ecological Research (DEB 06-20443), Ecosystems Research (DEB 02-36897), and  
636 Research Experiences for Undergraduates (DBI 04-52254), and by the U.S. Department of  
637 Energy's Office of Science through its Northeast Regional Center of the National Institute for  
638 Global Environmental Change under cooperative agreement no. DE-FC02-03ER63613.

639 Mackenzie Bennett, Peter Bettman-Kerson, Charlie Boyd, Naomi Clark, David Franklin, Clarisse  
640 Hart, Sultana Jefts, Susan Irizarry, Alanna Kassarian, Bennet Leon, Natalie Levy, Samantha  
641 Marshall, Nicole Mercier, Jan Ng, Amanda Parks, Samantha Petit, Haley Smith, Relena Ribbons,  
642 Christy Rollinson, Ernesto Rodríguez, Tawny Virgilio, Kelly Walton, Matt Waterhouse, and Kristin  
643 Williams assisted in the field work. Elizabeth Farnsworth, David Foster, two anonymous  
644 reviewers, and academic editor Michael Huston provided helpful comments on early versions of  
645 the manuscript.

646



647 **References**

- 648 Aber JD, Melillo JM. 1991. *Terrestrial ecosystems*. Philadelphia: Saunders College Publishing.
- 649 Aber JD, Magill A, Boone R, Melillo JM, Steudler P, Bowden R. 1993. Plant and soil responses to  
650 chronic nitrogen additions at the Harvard Forest Massachusetts. *Ecological Applications*.  
651 3: 156-166.
- 652 Albani M, Moorcroft PR, Ellison AM, Orwig DA, Foster DR. 2010. Predicting the impact of  
653 hemlock woolly adelgid on carbon dynamics of eastern US forests. *Canadian Journal of*  
654 *Forest Research*. 40: 119-133.
- 655 Anderson P, Brundrett M, Grierson P, Robinson R. 2010. Impact of severe forest dieback caused  
656 by *Phytophthora cinnamomi* on macrofungal diversity in the northern Jarrah forest of  
657 Western Australia. *Forest Ecology and Management*. 259: 1033-1040.
- 658 Aukema JE, Leung B, Kovacs K, Chivers C, Britton KO, Englin J, Frankel SJ, Haight RG, Holmes TP,  
659 Liebhold AM, McCullough DG, Von Holle B. 2011. Economic impacts of non-native  
660 insects in the continental United States. *PLoS ONE*. 6: e24587.
- 661 Barbier EB, Hacker SD, Kennedy C, Koch EW, Stier AC, Silliman BR. 2011. The value of estuarine  
662 and coastal ecosystem services. *Ecological Monographs*. 81: 169-193.
- 663 Barnes BV. 1976. Succession in deciduous swamp communities of southeastern Michigan  
664 formerly dominated by American elm. *Canadian Journal of Botany*. 54: 19-24.
- 665 Berg B, McClaugherty C. 2008. *Plant litter decomposition, humus formation, carbon*  
666 *sequestration, 2nd edition*. Berlin: Springer-Verlag.
- 667 Bettmann-Kerson P. 2007. Hemlock removal experiment – dendrochronological record. Harvard  
668 Forest Data Archive HF-086. Available at:

669 <http://harvardforest.fas.harvard.edu:8080/exist/xquery/dataxq?id=hf086> (accessed 24  
670 October 2012).

671 Binkley D, Matson P. 1983. Ion exchange resin bag method for assessing forest soil nitrogen  
672 availability. *Soil Science Society of America Journal*. 47: 1050-1052.

673 Bowden RD, Castro MS, Melillo JM, Steudler PA, Aber JD. 1993. Fluxes of greenhouse gases  
674 between soils and the atmosphere in a temperate forest following a simulated hurricane  
675 blowdown. *Biogeochemistry*. 21: 61-71.

676 Brantley ST, Ford, CR, Vose JM. *in press*. Future species composition will affect forest water use  
677 after loss of eastern hemlock from southern Appalachian forests. *Ecological*  
678 *Applications*. <http://dx.doi.org/10.1890/12-0616.1>.

679 Bridgeland WT, Beier P, Kolb T, Whitham TG. 2010. A conditional trophic cascade: birds benefit  
680 faster growing trees with strong links between predators and plants. *Ecology*. 91: 73-84.

681 Brooks RT. 2001. Effects of the removal of overstory hemlock from hemlock-dominated forests  
682 on eastern redback salamanders. *Forest Ecology and Management*. 149: 197-204.

683 Bunker DE, DeClerck F, Bradford JC, Colwell RK, Perfecto I, Phillips OL, Sankaran M, Naeem S.  
684 2005. Species loss and aboveground carbon storage in a tropical forest. *Science*. 310:  
685 1029-1031.

686 Cai YF, Barber P, Dell B, O'Brien P, Williams N, Bowen B, Hardy G. 2010. Soil bacterial functional  
687 diversity is associated with the decline of *Eucalyptus gomphocephala*. *Forest Ecology*  
688 *and Management*. 260: 1047-1057.

689 Cardinale BJ, Duffy JE, Gonzalez A, Hooper DU, Perrings C, Venail P, Narwani A, Mace GM,  
690 Tilman D, Wardle DA, Kinzig AP, Daily GC, Loreau M, Grace JB, Larigauderie A, Srivastava  
691 DS, Naeem S. 2012. Biodiversity loss and its impact on humanity. *Nature*. 486: 59-67.

692 Cobb RS, Orwig DA, Currie S. 2006. Decomposition of green foliage in eastern hemlock forests  
693 of southern New England impacted by hemlock woolly adelgid populations. *Canadian*  
694 *Journal of Forest Research*. 36: 1-11.

695 Cowles RS. 2009. Optimizing dosage and preventing leaching of imidacloprid for management  
696 of hemlock woolly adelgid in forests. *Forest Ecology and Management*. 257: 1026-1033.

697 D'Amato AW, Orwig DA, Foster DR. 2008. The influence of successional processes and  
698 disturbance on the structure of *Tsuga canadensis* forests. *Ecological Applications*. 18:  
699 1182-1199.

700 D'Amato AW, Orwig DA, Foster DR. 2009. Understory vegetation in old-growth and second-  
701 growth *Tsuga canadensis* forests in western Massachusetts. *Forest Ecology and*  
702 *Management*. 257: 1043-1052.

703 Dilling C, Lambdin P, Grant J, Buck L. 2007. Insect guild structure associated with eastern  
704 hemlock in the southern Appalachians. *Environmental Entomology*. 36: 1408-1414.

705 Ellison AM, Bank MS, Clinton BD, Colburn EA, Elliott K, Ford CR, Foster DR, Kloeppel BD, Knoepp  
706 JD, Lovett GM, Mohan J, Orwig DA, Rodenhouse NL, Sobczak WV, Stinson KA, Stone JK,  
707 Swan CM, Thompson J, Von Holle B, Webster JR. 2005a. Loss of foundation species:  
708 consequences for the structure and dynamics of forested ecosystems. *Frontiers in*  
709 *Ecology and the Environment*. 3: 479-486.

710 Ellison AM, Chen J, Díaz D, Kammerer-Burnham C, Lau M. 2005b. Changes in ant community  
711 structure and composition associated with hemlock decline in New England. In: Onken  
712 B, Reardon R, eds. *Proceedings of the 3<sup>rd</sup> Symposium on hemlock woolly adelgid in the*  
713 *eastern United States*. Morgantown: US Forest Service – Forest Health Technology  
714 Enterprise Team, 280-289.

715 Ellison AM, Barker Plotkin AA, Foster DR, Orwig DA. 2010. Experimentally testing the role of  
716 foundation species in forests: the Harvard Forest Hemlock Removal Experiment.  
717 *Methods in Ecology and Evolution*. 1: 168-179.

718 Eschtruth AK, Cleavitt NL, Battles JJ, Evans RA, Fahey TJ. 2006. Vegetation dynamics in declining  
719 eastern hemlock stands: nine years of forests response to hemlock woolly adelgid  
720 infestation. *Canadian Journal of Forest Research*. 36: 1435-1450.

721 Faison EK, Houston DR. 2004. Black bear foraging in response to beech bark disease in northern  
722 Vermont. *Northeastern Naturalist*. 11: 387-394.

723 Farnsworth EJ, Barker Plotkin A, Ellison AM. 2012. Seed bank, seed rain, and vegetation  
724 dynamics in *Tsuga canadensis* stands: reorganization of forests after foundation species  
725 loss due to logging or simulated attack of *Adelges tsugae*. *Canadian Journal of Forest*  
726 *Research*. 42: 2090-2105.

727 Fitzpatrick MC, Preisser EL, Porter A, Elkinton J, Ellison AM. 2012. Modeling range dynamics in  
728 heterogeneous landscapes: invasion of the hemlock woolly adelgid in eastern North  
729 America. *Ecological Applications*. 22: 472-486.

730 Floudas D, Binder M, Riley R, Barry K, Blanchette RA, Henrissat B, Martínez AT, Otillar R,  
731 Spatafora JW, Yadav JS, Aerts A, Benoit I, Boyd A, Carlson A, Copeland A, Coutinho PM,

732 de Vries RP, Ferreira P, Findley K, Foster B, Gaskell J, Glotzer D, Górecki P, Heitman J,  
733 Hesse C, Hori C, Igarashi K, Jurgens JA, Kallen N, Kersten P, Kohler A, Kües U, Kumar TKA,  
734 Kuo A, LaButti K, Larrondo LF, Lindquist E, Ling A, Lombard V, Lucas S, Lundell T, Martin  
735 R, McLaughlin DJ, Morgenstern I, Morin E, Murat C., Nagy LG, Nolan M, Ohm RA,  
736 Patyshakuliyeva A, Rokas A, Ruiz-Dueñas FJ, Sabat G, Salamov A, Samejima M, Schmutz  
737 J, Slot JC, St. John F, Stenlid J, Sun H, Sun S, Syed K, Tsang A, Wiebenga A, Young D,  
738 Pisabarro A, Eastwood DC, Martin F, Cullen D, Grigoriev IV, Hibbett DS. 2012. The  
739 Paleozoic origin of enzymatic lignin decomposition reconstructed from 31 fungal  
740 genomes. *Science*. 336: 1715-1719.

741 Ford CR, Vose JM. 2007. *Tsuga canadensis* (L.) Carr. mortality will impact hydrological processes  
742 in southern Appalachian forest ecosystems. *Ecological Applications*. 17: 1156-1167.

743 Ford CR Elliott KJ Clinton BD Kloeppel BD, Vose JM. 2012. Forest dynamics following eastern  
744 hemlock mortality in the southern Appalachians. *Oikos*: 121: 523-536.

745 Foster DR, Orwig DA. 2006. Pre-emptive and salvage harvesting of New England forests: when  
746 doing nothing is a viable alternative. *Conservation Biology*. 20: 959-970.

747 Foster DR, Aber JD, Melillo JM, Bowden RD, Bazazz FA. 1997. Forest response to disturbance  
748 and anthropogenic stress. *BioScience*. 47: 437- 445.

749 Garneau DE, Lawler, ME, Rumpf AS, Weyburne ES, Cuppernull TM, Boe AG. 2012. Potential  
750 effects of beech bark disease on small mammals and invertebrates in northeastern US  
751 forests. *Northeastern Naturalist*. 19: 391-410.

752 Gaston KJ. 2010. Valuing common species. *Science*. 327: 154-155.

753 Gaudinski JB, Trumbore SE, Davidson EA, Zheng S. 2000. Soil carbon cycling in a temperate  
754 forest: radiocarbon-based estimates of residence times sequestration rates and  
755 partitioning fluxes. *Biogeochemistry*. 51: 33-69.

756 Gotelli NJ, Ellison AM. 2012. *A primer of ecological statistics, 2<sup>nd</sup> edition*. Sunderland: Sinauer  
757 Associates.

758 Hadley JL, Kuzeja PS, Daley MJ, Phillips NG, Mulcahy T, Singh S. 2008. Water use and carbon  
759 exchange of red oak- and eastern hemlock-dominated forests in the northeastern USA:  
760 implications for ecosystem-level effects of hemlock woolly adelgid. *Tree Physiology*. 28:  
761 615-627.

762 Haines A. 2011. *Flora Novae Angliae: a manual for the identification of native and naturalized*  
763 *higher vascular plants of New England*. New Haven: Yale University Press.

764 Hanson PJ, Edwards NT, Garten CT, Andrews JA. 2000. Separating root and soil microbial  
765 contributions to soil respiration: a review of methods and observations.  
766 *Biogeochemistry*. 48: 115-146.

767 Harmon ME, Sexton J. 1996. *Guidelines for measurements of woody detritus in forest*  
768 *ecosystems*. Seattle: US Long-term Ecological Research Network Office, publication  
769 number 20.

770 Hart SC, Stark JM, Davidson EA, Firestone MF. 1994. Nitrogen mineralization immobilization and  
771 nitrification. In: Weaver RW, Angle S, Bottomley P, Dezdicek D, Smith S, Tabatabai A,  
772 Wollum, eds. *Methods of soil analysis, part 2: microbial and biochemical properties*.  
773 Madison: Soil Science Society of America, Inc., 985-1018.

774 Hatakka A. 2001. Biodegradation of lignin. In: Hofrichter M, Steinbüchel A, eds. *Biopolymers.*  
775 *Biology, chemistry, biotechnology, applications. Volume 1. Lignin, humic substances and*  
776 *coal.* Weinheim: Wiley-VCH, 129-180.

777 Hicke JA, Allen CD, Desai AR, Dietze MC, Hall RJ, Hogg EH, Kashian DM, Moore D, Raffa KF,  
778 Sturrock RN, Vogelmann J. 2012. Effects of biotic disturbances on forest carbon cycling  
779 in the United States and Canada. *Global Change Biology.* 18: 7-34.

780 Hooper DU, Adair EC, Cardinale BJ, Byrnes JEK, Hungate BA, Matulich KL, Gonzalez A, Duffy JE,  
781 Gamfeldt L, O'Connor MI. 2012. A global synthesis reveals biodiversity loss as a major  
782 driver of ecosystem change. *Nature.* 486: 105-108.

783 Houston DR. 1975. Beech bark disease: the aftermath forests are structured for a new  
784 outbreak. *Journal of Forestry.* 73: 660-673.

785 Huenneke LF. 1983. Understory response to gaps caused by the death of *Ulmus americana* in  
786 central New York. *Bulletin of the Torrey Botanical Club.* 110: 170-175.

787 Ingwell LL, Preisser EL. 2011. Using citizen science programs to identify host resistance in pest-  
788 invaded forests. *Conservation Biology.* 25: 182-188.

789 Jenkins JC, Aber JD, Canham CD. 1999. Hemlock woolly adelgid impacts on community structure  
790 and N cycling rates in eastern hemlock forests. *Canadian Journal of Forest Research.* 29:  
791 630-645.

792 Kendall KC, Keane RE. 2001. Whitebark pine decline: infection mortality and population trends.  
793 In: Tomback DF, Arno SF, Keane, RE, eds. *Whitebark pine communities ecology and*  
794 *restoration.* Washington DC: Island Press, 221-242.

795 Kizlinski ML, Orwig DA, Cobb RC, Foster DR. 2002. Direct and Indirect ecosystem consequences  
796 of an invasive pest on forests dominated by eastern hemlock. *Journal of Biogeography*.  
797 29; 1489-1503.

798 Knoepp JD, Vose JM, Clinton BD, Hunter MD. 2011. Hemlock infestation and mortality: impacts  
799 on nutrient pools and cycling in Appalachian forests. *Soil Science Society of America*  
800 *Journal*. 75: 1935-1945.

801 Lachat Instruments Inc. 1990a *QuickChem method No 10-107-06-1-C* Milwaukee: Lachat.

802 Lachat Instruments Inc. 1990b *QuickChem method No 10-107-04-1-A* Milwaukee: Lachat.

803 Levy-Varon JH, Schuster WSF, Griffin KL. 2012. The autotrophic contribution to soil respiration  
804 in a northern temperate deciduous forest and its response to stand disturbance.  
805 *Oecologia*. 169: 211-220.

806 Livingston GP, Hutchinson GL. 1995. Enclosure-based measurement of trace gas exchange:  
807 applications and sources of error. In: Matson PA, Harriss RC, eds. *Biogenic trace gases:*  
808 *measuring emissions from soil and water*. Oxford: Blackwell, 14-51.

809 Lovett GM, Canham CD, Arthur MA, Weathers KC, Fitzhugh RD. 2006. Forest ecosystem  
810 responses to exotic pests and pathogens in eastern North America. *BioScience*. 56: 395-  
811 405.

812 Lustenhouwer MN, Nicoll L, Ellison AM. 2012. Microclimatic effects of the loss of a foundation  
813 species from New England forests. *Ecosphere*. 3: 26.

814 Mallis RE, Rieske LK. 2011. Arboreal spiders in eastern hemlock. *Environmental Entomology*. 40:  
815 1378-1387.



816 Mathewson B. 2009. The relative abundance of eastern red-backed salamanders in eastern  
817 hemlock-dominated and mixed deciduous forests at Harvard Forest. *Northeastern*  
818 *Naturalist*. 16: 1-12.

819 McBride J. 1973. Natural replacement of disease-killed elms. *American Midland Naturalist*. 90:  
820 300-306.

821 McClure MS. 1995. Managing hemlock woolly adelgid in ornamental landscapes. *Bulletin of the*  
822 *Connecticut Agricultural Experiment Station*. 925.

823 Mueller KE, Hobbie SE, Oleksyn J, Reich PB, Eissenstat DM. 2012. Do evergreen and deciduous  
824 trees have different effects on net N mineralization in soil? *Ecology*. 93: 1463-1472.

825 Myers BR, Walck JL, Blum KE. 2004. Vegetation change in a former chestnut stand on the  
826 Cumberland Plateau of Tennessee during an 80-year period (1921-2000). *Castanea*. 69:  
827 81-91.

828 Naeem S, Duffy JE, Zavaleta E. 2012. The functions of biological diversity in an age of extinction.  
829 *Science*. 336: 1401-1406.

830 Nagelkerken I, Blaber SJM, Bouillon S, Green P, Haywood M, Kirton LG, Meynecke JO, Pawlik J,  
831 Penrose HM, Sasekumar A, Somerfield PJ. 2008. The habitat function of mangroves for  
832 terrestrial and marine fauna: a review. *Aquatic Botany*. 89: 155-185.

833 Nave LE, Gough CM, Maurer KD, Bohrer G, Hardiman BS, Le Moine J, Munoz AB, Nadelhoffer KJ,  
834 Sparks JP, Strahm BD, Vogel CS, Curtis PS. 2011. Disturbance and the resilience of  
835 coupled carbon and nitrogen cycling in a north temperate forest. *Journal of Geophysical*  
836 *Research*. 116: G04016.

837 Nuckolls AE, Wurzburger N, Ford CR, Hendrick RL, Vose JM, Kloeppel BD. 2009. Hemlock  
838 declines rapidly with hemlock woolly adelgid infestation: impacts on the carbon cycle of  
839 southern Appalachian forests. *Ecosystems*. 12: 179-190.

840 Onken B, Reardon R. 2011 *Implementation and status of biological control of the hemlock*  
841 *woolly adelgid*. Morgantown: US Forest Service, Publication FHTET-2011-04.

842 Orwig DA, Foster DR. 1998. Forest response to the introduced hemlock woolly adelgid in  
843 southern New England, USA. *Journal of the Torrey Botanical Society*. 125: 59-72.

844 Orwig DA, Foster DR, Mausel DL. 2002. Landscape patterns of hemlock decline in New England  
845 due to the introduced hemlock woolly adelgid. *Journal of Biogeography*. 29: 1475-1487.

846 Orwig DA, Cobb RC, D'Amato AW, Kizlinski ML, Foster DR. 2008. Multi-year ecosystem response  
847 to hemlock woolly adelgid infestation in southern New England forests. *Canadian*  
848 *Journal of Forest Research*. 38: 834-843.

849 Orwig DA, Thompson J, Povak NA, Manner M, Niebyl D, Foster DR. 2012. A foundation tree at  
850 the precipice: eastern hemlock health following the arrival of *Adelges tsugae* in central  
851 New England. *Ecosphere*: 3: 10.

852 Pinheiro J, Bates D, DebRoy S, Sarkar D, R Development Core Team. 2012. *nlme: linear and*  
853 *nonlinear mixed effects models*. R package version 3.1-104. Available at [http://cran.r-](http://cran.r-project.org/web/packages/nlme/)  
854 [project.org/web/packages/nlme/](http://cran.r-project.org/web/packages/nlme/) (accessed 1 July 2012)

855 R Development Core Team. 2009. *R: a language and environment for statistical computing*.  
856 Vienna: R Foundation for Statistical Computing.

857 Rice AH, Pyle EH, Saleska SR, Hutyra L, Palace M, Keller M, DeCamargo PB, Portilho K, Marques  
858 DF, Wofsy SC. 2004. Carbon balance and vegetation dynamics in an old-growth  
859 Amazonian forest. *Ecological Applications*. 14: S55–S71.

860 Roberston GP, Wedin D, Groffman PM, Blair JM, Holland EA, Nadelhoffer KJ, Harris D. 1999. Soil  
861 carbon and nitrogen availability: nitrogen mineralization nitrification and soil respiration  
862 potentials. In: Robertson GP, Coleman DC, Bledsoe CS, Sollins P, eds. *Standard soil  
863 methods for long-term ecological research*. New York, Oxford University Press, 258-288.

864 Rogers RS. 1980. Hemlock stands from Wisconsin to Nova Scotia: transitions in understory  
865 composition along a floristic gradient. *Ecology*. 61: 178-193.

866 Rohr JR, Mahan CG, Kim KC. 2009. Response of arthropod biodiversity to foundation species  
867 declines: the case of the eastern hemlock. *Forest Ecology and Management*. 258: 1503-  
868 1510

869 Sackett TE, Record S, Bewick S, Baiser B, Sanders NJ, Ellison AM. 2011. Response of  
870 macroarthropod assemblages to the loss of hemlock (*Tsuga canadensis*), a foundation  
871 species. *Ecosphere*. 2: 74.

872 Savage KE, Davidson EA. 2001. Interannual variation of soil respiration in two New England  
873 forests. *Global Biogeochemical Cycles*. 15: 337-350.

874 Smith WB, Miles PD, Perry CH, Pugh SA. 2009. *Forest resources of the United States, 2007*.  
875 Washington DC: USDA Forest Service, General Technical Report WO-78.

876 Snyder CD, Young JA, Lemarie DP, Smith DR. 2002. Influence of eastern hemlock forests on  
877 aquatic invetebrate assemblages in headwater streams. *Canadian Journal of Fisheries  
878 and Aquatic Sciences*. 59: 262-275.

879 Stadler B, Müller T, Orwig D, Cobb R. 2005. Hemlock woolly adelgid in New England forests:  
880 canopy impacts transforming ecosystem processes and landscapes. *Ecosystems*. 8: 233-  
881 247.

882 Stadler B, Müller T, Orwig D. 2006. The ecology of energy and nutrient fluxes in hemlock forests  
883 invaded by the hemlock woolly adelgid. *Ecology*. 87: 1792-1804.

884 Suding KN, Lavorel S, Chapin FS III, Cornelissen JHC, Díaz S, Garnier E, Goldberg D, Hooper DU,  
885 Jackson ST, Navas M-L. 2008. Scaling environmental change through the community-  
886 level: a trait-based response-and-effect framework for plants. *Global Change Biology*.  
887 14: 1125-1140.

888 Sullivan KA, Ellison AM. 2006. The seed bank of hemlock forests: implications for forest  
889 regeneration following hemlock decline. *Journal of the Torrey Botanical Society*. 133:  
890 393-402.

891 Templer PH, McCann TM. 2010. Effects of the hemlock woolly adelgid on nitrogen losses from  
892 urban and rural northern forest ecosystems. *Ecosystems*. 13: 1215-1226.

893 Tingley MW, Orwig DA, Motzkin G, Foster DR, Field R. 2002. Avian response to removal of a  
894 forest dominant: consequences of hemlock woolly adelgid infestations. *Journal of*  
895 *Biogeography*. 29: 1505-1516.

896 Tomback DF, Achuff P. 2010. Blister rust and western forest biodiversity: ecology, values and  
897 outlook for white pines. *Forest Pathology*. 40: 186-225.

898 Twery MJ, Patterson WA III. 1984. Variations in beech bark disease and its effects on species  
899 composition and structure of northern hardwood stands in central New England.  
900 *Canadian Journal of Forest Research*. 14: 565-574.

901 United States Department of Agriculture (USDA). n.d. *Official soil series descriptions*. Lincoln:  
902 Soil Survey Staff Natural Resources Conservation Service. *Available at*:  
903 <http://soils.usda.gov/technical/classification/osd/index.html> (accessed 1 July 2010).  
904 Van Wagner CE. 1968. The line intersect method in forest fuel sampling. *Forest Science*. 14: 20-  
905 26.

906 Ward JS, Montgomery ME, Cheah CAS-J, Onken BP, Cowles RS. 2004. *Eastern hemlock forests:*  
907 *guidelines to minimize the impacts of hemlock woolly adelgid*. Morgantown: USDA  
908 Forest Service Northeastern Area State and Private Forestry, publication NA-TP-03-04.

909 Wardle DA, Bardgett RD, Callaway RM, Van der Putten WH. 2011. Terrestrial ecosystem  
910 responses to species gains and losses. *Science*. 332: 1273-1277.

911 Wills RT. 1993. The ecological impact of *Phytophthora cinnamomi* in the Stirling Range National  
912 Park, Western Australia. *Australian Journal of Ecology*. 18: 145-159.

913 Yorks TE, Leopold DJ, Raynal DJ. 2003. Effects of *Tsuga canadensis* mortality on soil water  
914 chemistry and understory vegetation: possible consequences of an invasive insect  
915 herbivore. *Canadian Journal of Forest Research*. 33: 1525-1537.

916 Zheng D, Prince S, Hame T. 2004. Estimating net primary production of boreal forests in Finland  
917 and Sweden from field data and remote sensing. *Journal of Vegetation Science*. 15: 161-  
918 170.

919

920 **Table legends:**

921 **Table 1.** Changes in total average basal area ( $\text{m}^2 \text{ha}^{-1}$ ) and density ( $\text{ha}^{-1}$ ) in the treatment plots of the  
922 Harvard Forest Hemlock Removal Experiment.

923 **Table 2.** Summary of ANCOVA analyses on vegetation structural characteristics shown in Figure 2. The  
924 models fit were all of the form  $\text{response variable} = \beta_0 + \beta_1 \times \text{block} + \beta_2 \times \text{time} + \beta_3 \times \text{treatment} +$   
925  $\beta_4 \times \text{time} \times \text{treatment}$ ; if the response variable was ln-transformed prior to analysis, that is noted in the  
926 column heading. Values shown in the first four rows are F-statistics, associated degrees of freedom, and  
927 P-values; parameter estimates (SE) for the four treatments – C (hemlock control); G (girdled), L (logged),  
928 and H (hardwood control) – are given in the next three rows. Parameter estimates are not back-  
929 transformed (for models fit to ln-transformed data). Parameter estimates that are significantly different  
930 from 0 are shown in *italics*.

931 **Table 3.** Summary of ANCOVA analyses on ecosystem functional characteristics shown in Figure 3. The  
932 models fit were all of the form  $\text{response variable} = \beta_0 + \beta_1 \times \text{block} + \beta_2 \times \text{time} + \beta_3 \times \text{treatment} +$   
933  $\beta_4 \times \text{time} \times \text{treatment}$ ; if the response variable was *ln*-transformed prior to analysis, that is noted in the  
934 column heading. Values shown in the first four rows are F-statistics, associated degrees of freedom, and  
935 P-values; parameter estimates (SE) for the four treatments – C (hemlock control); G (girdled), L (logged),  
936 and H (hardwood control) – are given in the next three rows. Parameter estimates are not back-  
937 transformed (for models fit to *ln*-transformed data). Parameter estimates that are significantly different  
938 from 0 are shown in *italics*.

**Table 1.** Changes in total average basal area ( $\text{m}^2 \text{ha}^{-1}$ ) and density ( $\text{ha}^{-1}$ ) in the treatment plots of the Harvard Forest Hemlock Removal Experiment.

Canopy manipulation	Year	Basal area		Stem density	
		Valley plots	Ridge plots	Valley plots	Ridge plots
Hemlock control	2004	45.6	52.1	940	678
	2009	47.3	54.0	842	637
Girdled	2004	50.3	53.0	1354	1011
	2009	15.9	17.6	395	331
Logged	2004	47.9	49.5	1212	1089
	2009	15.4	13.8	469	373
Hardwood control	2004	29.7	35.6	1122	885
	2009	31.0	37.7	990	807

**Table 2.** Summary of ANCOVA analyses on vegetation structural characteristics shown in Figure 2. The models fit were all of the form  $response\ variable = \beta_0 + \beta_1 \times block + \beta_2 \times time + \beta_3 \times treatment + \beta_4 \times time \times treatment$ ; if the response variable was ln-transformed prior to analysis, that is noted in the column heading. Values shown in the first four rows are F-statistics, associated degrees of freedom, and P-values; parameter estimates (SE) for the four treatments – C (hemlock control); G (girdled), L (logged), and H (hardwood control) – are given in the next three rows. Parameter estimates are not back-transformed (for models fit to ln-transformed data). Parameter estimates that are significantly different from 0 are shown in *italics*.

	Understory richness	Understory cover	ln(Tree seedling density)	ln(Tree seedling cover)	ln(Sapling density + 1)	ln(Snag and stump volume)	CWD volume
<i>Sources of variation</i>							
<b>Intercept</b>	F <sub>1,39</sub> = 671.34	F <sub>1,47</sub> = 132.35	F <sub>1,47</sub> = 2967.94	F <sub>1,47</sub> = 0.03	F <sub>1,15</sub> = 148.05	F <sub>1,15</sub> = 1135.32	F <sub>1,15</sub> = 151.22
	<i>P</i> <0.0001	<i>P</i> <0.0001	<i>P</i> <0.0001	<i>P</i> =0.8615	<i>P</i> <0.0001	<i>P</i> <0.0001	<i>P</i> <0.0001
<b>Time</b>	F <sub>1,39</sub> = 23.65	F <sub>1,47</sub> = 21.82	F <sub>1,47</sub> = 11.80	F <sub>1,47</sub> = 82.57	F <sub>1,15</sub> = 1.27	F <sub>1,15</sub> = 10.85	F <sub>1,15</sub> = 0.00
	<i>P</i> <0.0001	<i>P</i> <0.0001	<i>P</i> =0.0012	<i>P</i> <0.0001	<i>P</i> =0.2779	<i>P</i> =0.0049	<i>P</i> =0.9867
<b>Treatment</b>	F <sub>3,39</sub> = 53.13	F <sub>3,47</sub> = 80.34	F <sub>3,47</sub> = 2.55	F <sub>3,47</sub> = 32.84	F <sub>3,15</sub> = 2.85	F <sub>3,15</sub> = 14.53	F <sub>3,15</sub> = 43.51
	<i>P</i> <0.0001	<i>P</i> <0.0001	<i>P</i> =0.0668	<i>P</i> <0.0001	<i>P</i> =0.0728	<i>P</i> =0.0001	<i>P</i> <0.0001
<b>Time x Treatment</b>	F <sub>3,39</sub> = 4.29	F <sub>3,47</sub> = 12.58	F <sub>3,47</sub> = 4.16	F <sub>3,47</sub> = 15.14	F <sub>3,15</sub> = 0.49	F <sub>3,15</sub> = 7.39	F <sub>3,15</sub> = 0.90
	<i>P</i> =0.0104	<i>P</i> <0.0001	<i>P</i> =0.0108	<i>P</i> <0.0001	<i>P</i> =0.6929	<i>P</i> =0.0029	<i>P</i> =0.4634
<i>Parameter estimates</i>							
<b>Intercept (<math>\beta_0</math>)</b>	<i>8.38 (1.57)</i>	0.78 (1.62)	<i>10.04 (0.34)</i>	<i>-1.98 (0.33)</i>	<i>3.42 (1.18)</i>	<i>3.22 (0.39)</i>	<i>25.42 (8.24)</i>



**Table 3.** Summary of ANCOVA analyses on ecosystem functional characteristics shown in Figure 3. The models fit were all of the form  $response\ variable = \beta_0 + \beta_1 \times block + \beta_2 \times time + \beta_3 \times treatment + \beta_4 \times time \times treatment$ ; if the response variable was *ln*-transformed prior to analysis, that is noted in the column heading. Values shown in the first four rows are F-statistics, associated degrees of freedom, and *P*-values; parameter estimates (SE) for the four treatments – C (hemlock control); G (girdled), L (logged), and H (hardwood control) – are given in the next three rows. Parameter estimates are not back-transformed (for models fit to *ln*-transformed data). Parameter estimates that are significantly different from 0 are shown in *italics*.

	<b>ln(litterfall)</b>	<b>ln(hemlock litterfall)</b>	<b>Soil C flux</b>	<b>ln(NH<sub>4</sub>)</b>	<b>NO<sub>3</sub></b>	<b>ln(N mineralization)</b>
<i>Sources of variation</i>						
<b>Intercept</b>	F <sub>1,23</sub> = 10821.55	F <sub>1,23</sub> = 3.96	F <sub>1,29</sub> = 126.44	F <sub>1,47</sub> = 2347.54	F <sub>1,47</sub> = 8.35	F <sub>1,47</sub> = 397.38
	P<0.0001	P=0.0587	P<0.0001	P<0.0001	P=0.0058	P<0.0001
<b>Time</b>	F <sub>1,23</sub> = 0.14	F <sub>1,23</sub> = 6.46	F <sub>1,29</sub> = 0.84	F <sub>1,47</sub> = 2.53	F <sub>1,47</sub> <0.01	F <sub>1,47</sub> = 5.66
	P=0.7105	P=0.0182	P=0.3665	P=0.1183	P=0.9922	P=0.0214
<b>Treatment</b>	F <sub>3,23</sub> = 15.95	F <sub>3,23</sub> = 12.45	F <sub>2,29</sub> = 5.69	F <sub>3,47</sub> = 9.00	F <sub>3,47</sub> = 2.44	F <sub>3,47</sub> = 2.26
	P<0.0001	P<0.0001	P=0.0083	P<0.0001	P=0.0757	P=0.0933
<b>Time x Treatment</b>	F <sub>3,23</sub> = 3.26	F <sub>3,23</sub> = 5.53	F <sub>2,29</sub> = 2.05	F <sub>3,47</sub> = 2.14	F <sub>3,47</sub> = 0.91	F <sub>3,47</sub> = 2.39
	P=0.0399	P=0.0052	P=0.1475	P=0.1075	P=0.4435	P=0.0806
<i>Parameter estimates</i>						
<b>Intercept (β<sub>0</sub>)</b>	<i>3.86 (0.20)</i>	<i>2.87 (1.16)</i>	<i>0.29 (0.03)</i>	<i>4.67 (0.25)</i>	62.80 (37.73)	<i>-1.04 (0.14)</i>

946 **Figure legends**

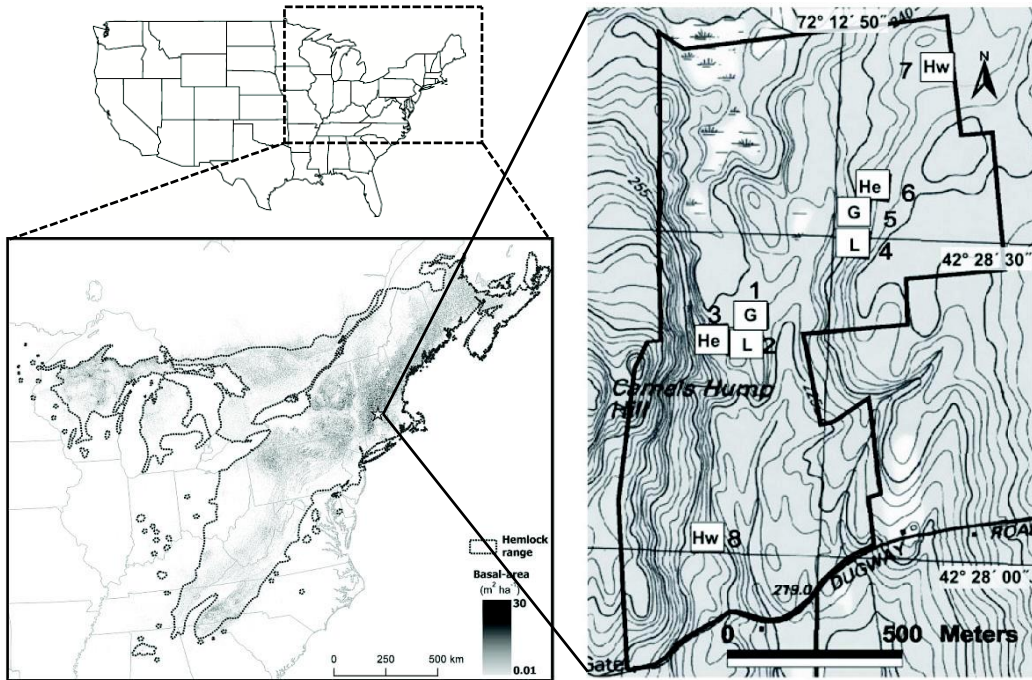
947 **Fig. 1.** Location of the Harvard Forest Hemlock Removal Experiment in Massachusetts, USA. The regional  
948 map shows the basal area of eastern hemlock at a 1 km<sup>2</sup> resolution. The inset shows the location of the  
949 experimental blocks and treatments. Plots 1, 2, 3, and 8 make up the valley block; plots 4 – 7 make up  
950 the ridge block. Each canopy manipulation treatment – hemlock control (He), girdled (G), logged (L), and  
951 hardwood control (Hw) – was applied to a 90 × 90 m plot within each block.

952 **Fig. 2.** Temporal trajectories of vegetation structural characteristics in the Harvard Forest Hemlock  
953 Removal Experiment. Values shown are plot means and standard deviations (where multiple samples  
954 were taken in each plot), back-transformed as necessary. Solid lines and symbols are plots in the valley;  
955 dashed lines and open symbols are plots on the ridge. Colors indicate treatments: blue – hemlock  
956 controls; yellow – all hemlocks girdled; red – hemlocks logged; lavender – hardwood controls.

957

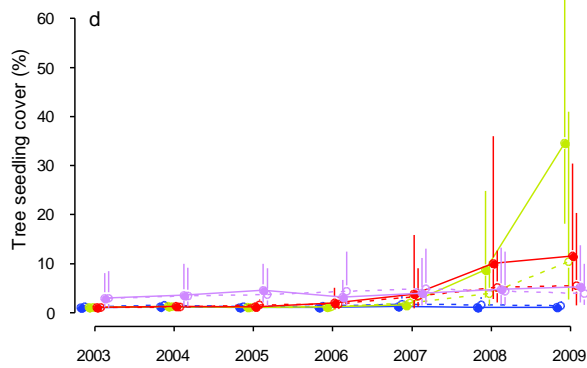
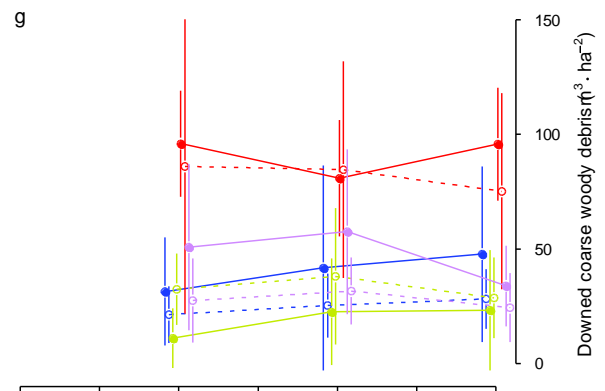
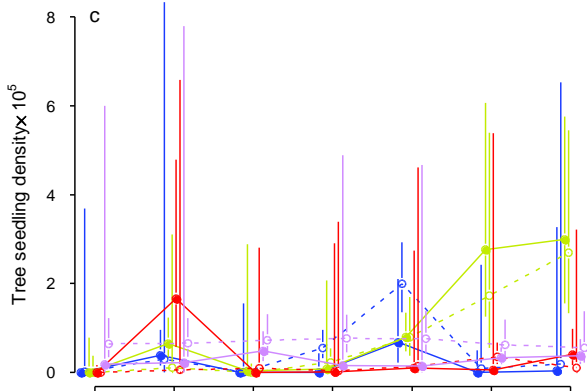
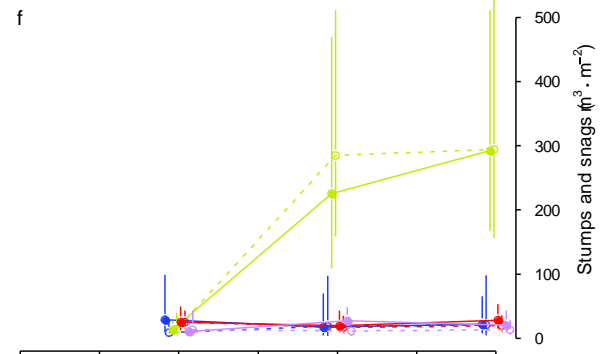
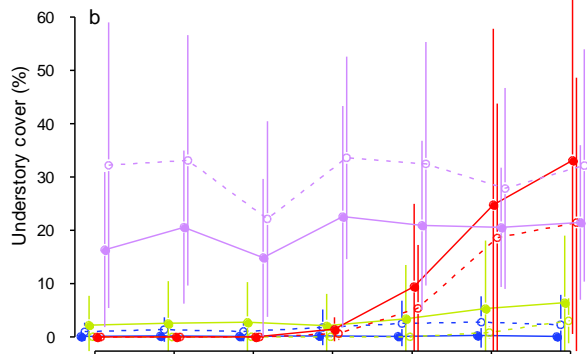
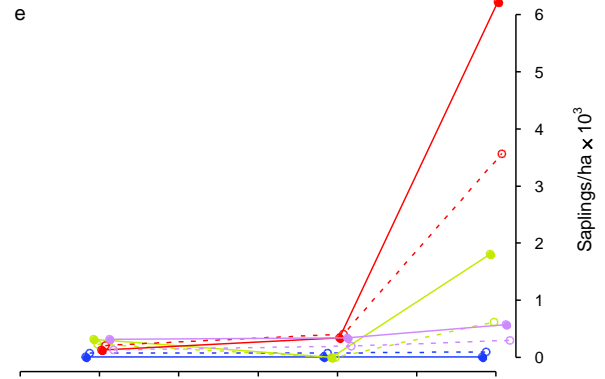
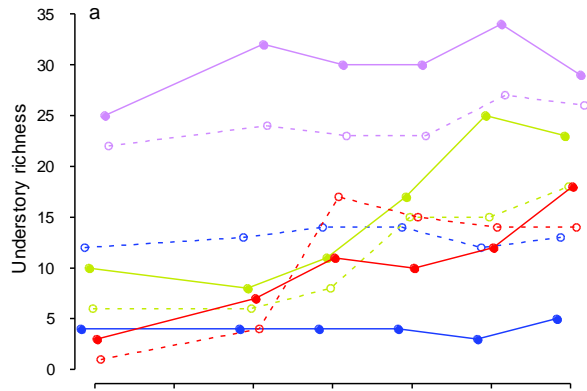
958 **Fig. 3.** Temporal trajectories of ecosystem functional characteristics in the Harvard Forest Hemlock  
959 Removal Experiment. Values shown are plot means and standard deviations (where multiple samples  
960 were taken in each plot), back-transformed as necessary. Solid lines and symbols are plots in the valley;  
961 dashed lines and open symbols are plots on the ridge. Colors indicate treatments: blue – hemlock  
962 controls; yellow – all hemlocks girdled; red – hemlocks logged; lavender – hardwood controls.

963



964

965



2003 2004 2005 2006 2007 2008 2009

Hemlock control  
Girdled  
Logged  
Hardwood control

