

Cutting the trees to save the forest

The Finch Pruyn working forest

Rachel Neugarten

Steven Wolf, Rich Steedman

Department of Natural

Resources

Cornell University



Cornell University

Ecological Society of America

August 7, 2009

Working forests

- Can't protect everything
- Focus on "working landscapes"
- Questions about effectiveness



Research questions

Do working forests really “work,” for nature and people?



- **What are the environmental and socioeconomic criteria?**
- **Who decides?**
- **How to efficiently & effectively evaluate outcomes?**

The punchline.

- **Criteria for sustainable forests and human communities is inconsistent**
- **Some criteria (biodiversity conservation, productive capacity, cultural & social values) often show up in the literature**
- **Other criteria (employment, recreation, schools) often come up Adirondacks**
- **This particular working forest is positioned to meet certain criteria (protected areas, recreation)**
- **Some criteria (biodiversity conservation, community viability) are long-term goals and subject to external forces**

Road map

- **Context: changing forest land ownership**
- **Case study: former Finch Pruyn lands**
- **Methodology:**
 - qualitative interview**
- **Preliminary results & conclusions**



Major forestland sales 2002-2007

| Seller | Buyer(s) | Size (acres) | Locations |
|----------------------------------------|-------------------------------------------------------------------------|-----------------|--------------------------------------------|
| International Paper | Hancock; The Nature Conservancy; Resource Mgt. Service; others | 9,706,530 | AL, MI, TX, LA, AR, NY, ME, NH, GA, VA, SC |
| Georgia-Pacific | Plum Creek | 4,700,000 | (Various) |
| Boise Cascade | Hancock; Madison Dearborn Partners; Forest Capital Partners | 4,579,000 | LA, WA, OR, ID, AL, MN |
| Temple-Inland Inc. | The Campbell Group, Inc. affiliate | 1,550,000 | TX, LA, GA, AL |
| Harvard Management Co. | Hancock | 915,000 | TX, PN, NY, WA |
| (+ many others) | | | |
| TOTAL (11 million ha) | | | 27.4 million acres |

Bliss, J.C., E.C. Kelly, J. Abrams, C. Bailey. 2008. Disintegration of the industrial forest estate and the future of small-scale forestry in the United States. Oregon

Natural Resources Defense Journal, Vol. 1038/npre.2009.3690.1 : Posted 2009

Conservation opportunities

- 1998 – the Conservation Fund purchases 300,000 acres from Champion International (NY, VT, NH)
- 1998 – The Nature Conservancy purchases 185,000 acres from International Paper (ME)
- 2005 – The Nature Conservancy purchases 104,000 acres from Domtar Industries (NY)
- 2007 – The Nature Conservancy purchases 161,000 acres formerly owned by Finch, Pruyn & Co. (NY)

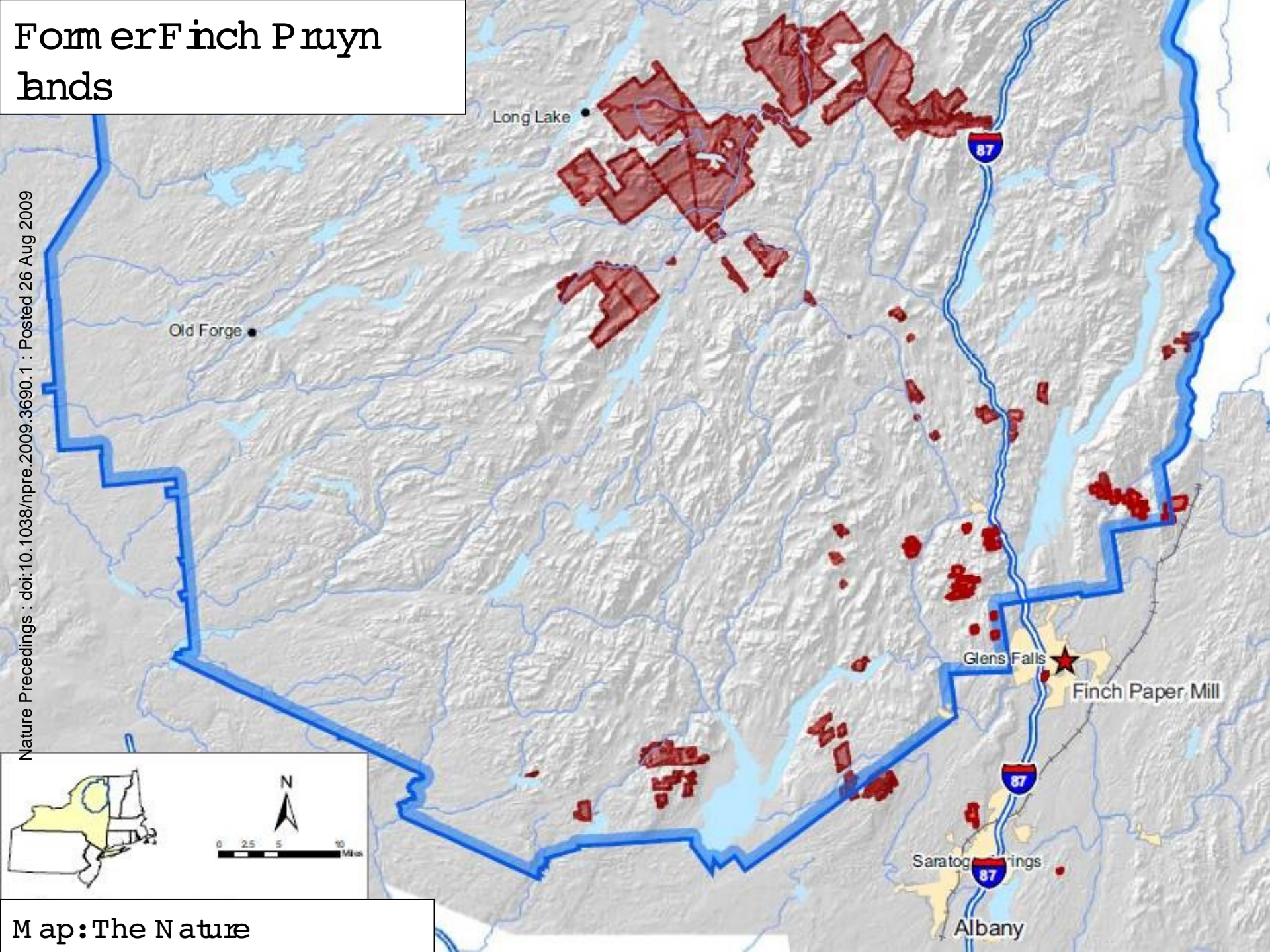
protected areas, sustainable timber,

recreation, limited development



Former Finch Paper Mill Lands

Nature Precedings : doi:10.1038/npre.2009.3690.1 : Posted 26 Aug 2009



Map: The Nature

**Northern
holdings**

**1/3 to Forest
Preserve**

**2/3 to ATP pension
fund, with easement**

**Snowmobile
trail network**

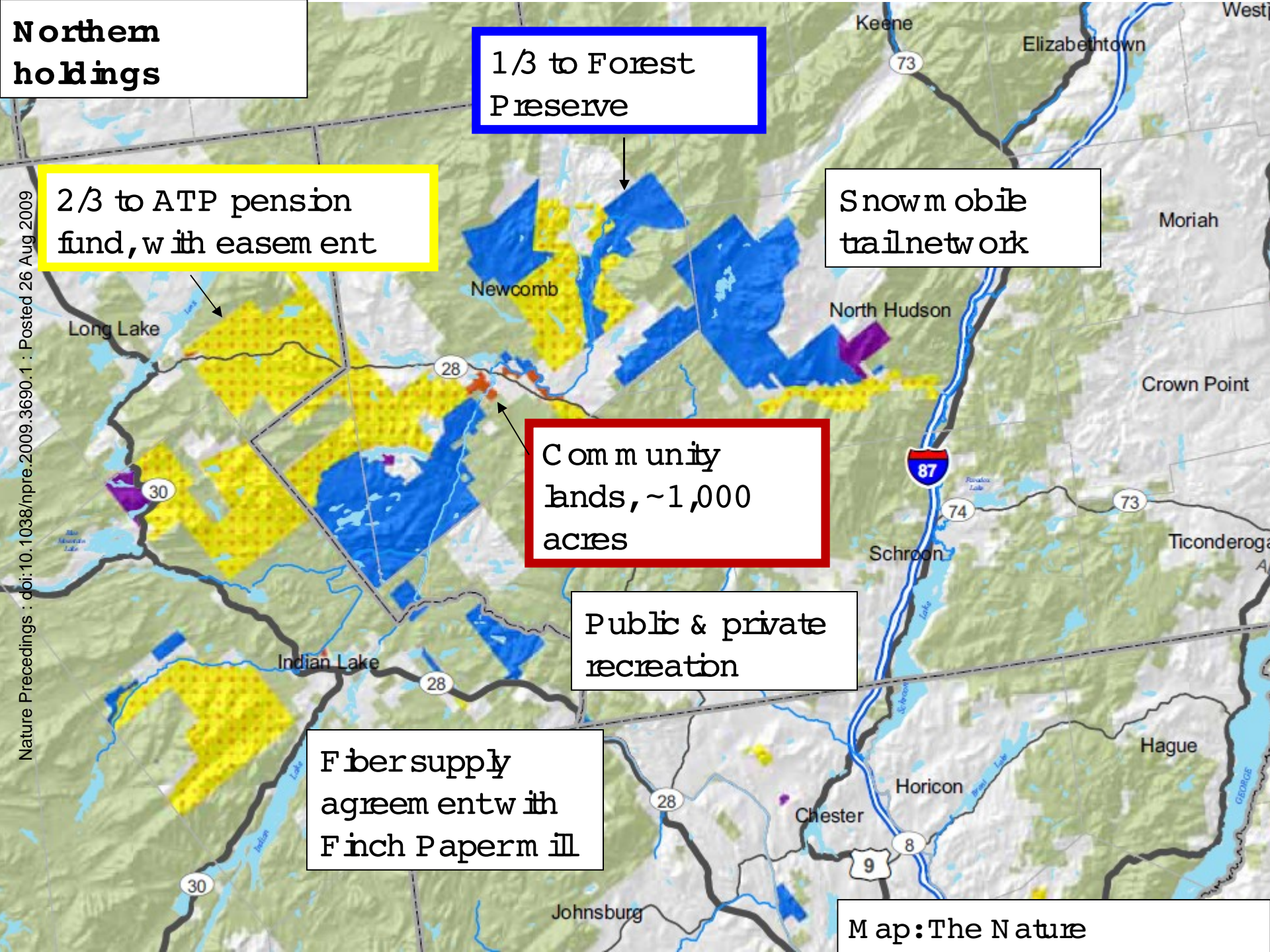
**Community
lands, ~1,000
acres**

**Public & private
recreation**

**Fiber supply
agreement with
Finch Papermill**

Map: The Nature

Nature Precedings : doi:10.1038/npre.2009.3690.1 : Posted 26 Aug 2009



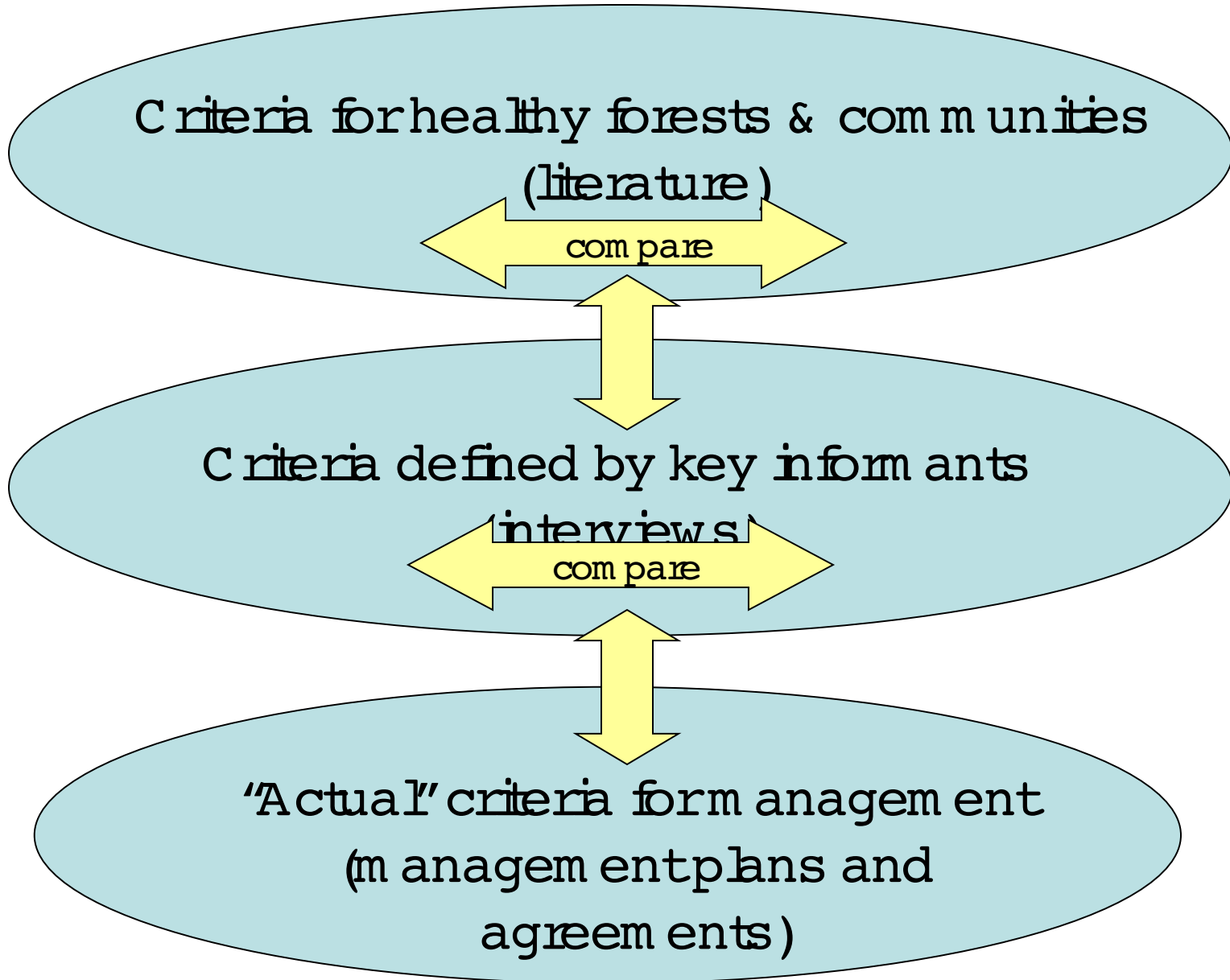
Research questions

Do working forests really “work,” for nature and people?

- **What are the environmental and socioeconomic criteria?**
- **Who decides?**
- **How to efficiently & effectively evaluate outcomes?**



Methods



Criteria from the literature (simplified)

| Criterion | Montreal Criteria & Indicators | Forest Stewardship Council | Sustainable Forestry Initiative | Northern Forest Wealth Index |
|---------------------------------------|--------------------------------|----------------------------|---------------------------------|------------------------------|
| Conservation of biological diversity | | | | |
| Forest ecosystem health | | | | |
| Protected areas | | | | |
| Rare or threatened species | | | | |
| Productive capacity of forests | | | | |
| Employment and community needs | | | | |
| Living Wage | | | | |
| Poverty, unemployment | | | | |
| Recreation & tourism | | | | |
| Cultural, social and spiritual values | | | | |
| Infrastructure | | | | |
| Education | | | | |

Nature Precedings : doi:10.1038/npre.2006.11693.1; posted 26 August 2006

Key informant interviews

- 31 semi-structured interviews
 - environmental groups, local government officials, public agencies, educators, foresters, local residents, paper company, hunt club, snowmobile association, financial investor
- 22 analyzed so far

Criteria from the interviews (n = 22)

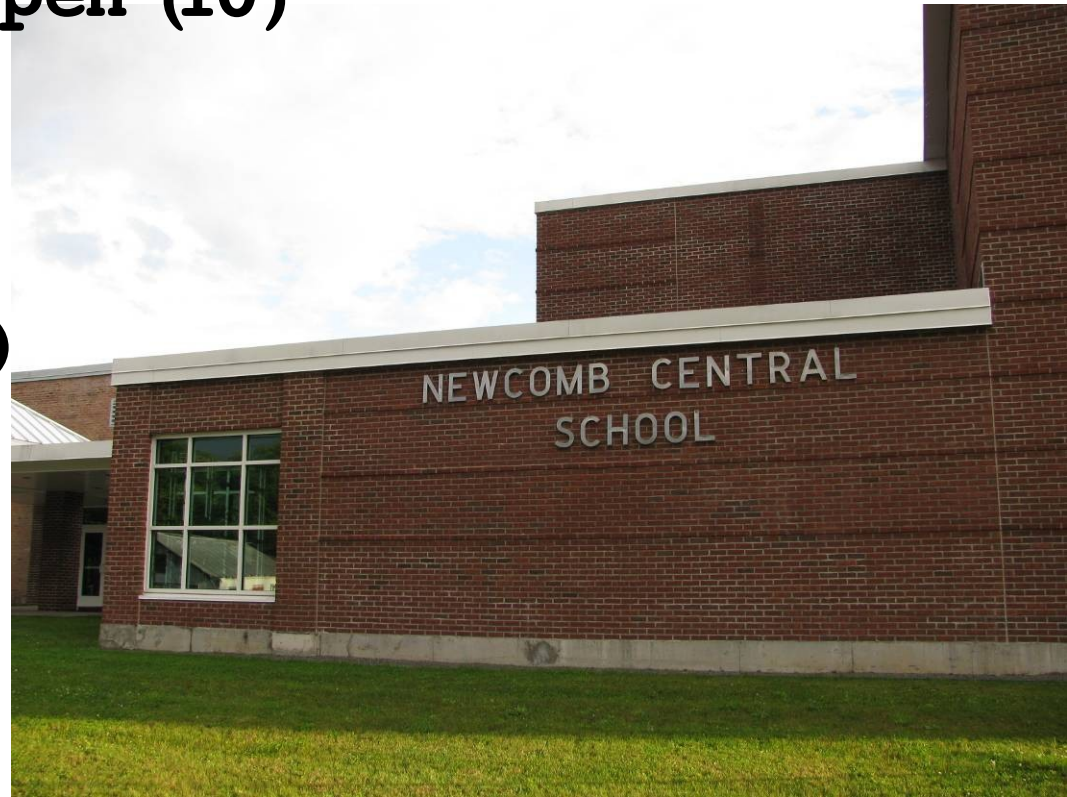
| Criterion | Number of interviewees |
|---------------------------------------|------------------------|
| Conservation of biological diversity | 6 |
| Forest ecosystem health | 2 |
| Protected areas | 8 |
| Rare or threatened species | 6 |
| Productive capacity of forests | 7 |
| Employment and community needs | 13 |
| Living Wage | 4 |
| Poverty, unemployment | 2 |
| Recreation & tourism | 19 |
| Cultural, social and spiritual values | 2 ? |
| Infrastructure | 8 |
| Education | 10 |

Other criteria (22 interviews)

- **Supported tax base /ability to pay property taxes (15)**
- **Winter recreation economy /snowmobiles (13)**
- **Keeping schools open (10)**

External factors:

- **Economy (13)**
- **Climate change (4)**
- **Acid rain (2)**



Preliminary conclusions

- **Literature**

- **Biodiversity conservation**
- **Protected areas**
- **Productive capacity**
- **Cultural, social, and spiritual values ?**

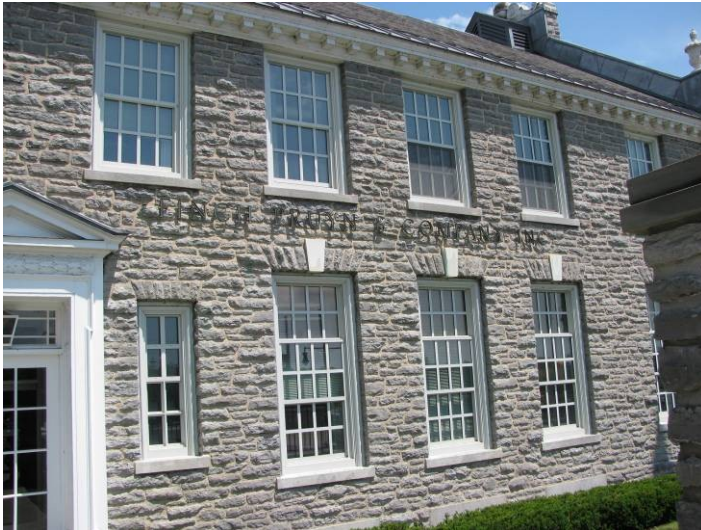


- **Interviews**

- **Recreation (public vs. private)**
- **Employment & community needs ?**
- **Taxes ?**
- **Economy ?**

Challenges & limitations

- **Diversity of goals**
- **Evaluation across ownerships**
- **Evolving strategy**
- **Complexity of geographic and temporal scale**



Who cares?

- **Economy vs. environment?**
- **Socioeconomic implications of environmental protection**
- **Ability of working forests to meet environmental goals**



Acknowledgements

- **Steven Wolf, Rich Stedman, and Barbara Bedford, Department of Natural Resources, Cornell University**
- **Tim Tear, Michelle Brown, and Dirk Bryant, The Nature Conservancy**
- **Funding:**
 - **Northern States Research Cooperative**
 - **McConkey and Dumond scholarships**
 - **Doris Duke Conservation Fellowship**
 - **Kieckhefer Adirondack Fellowship**

Questions?



Rachel Neugarten, ran63@cornell.edu

Department of Natural Resources, Cornell University

Project website:

<http://conserveonline.org/workspaces/cornellworkingfor>